

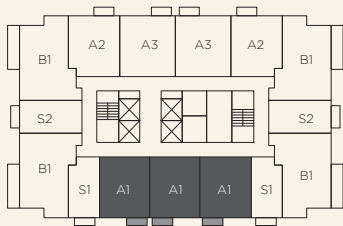
THE CROSBY

MIAMI WORLDCENTER



The RESIDENCES

A1 1 Bed / 1 Bath

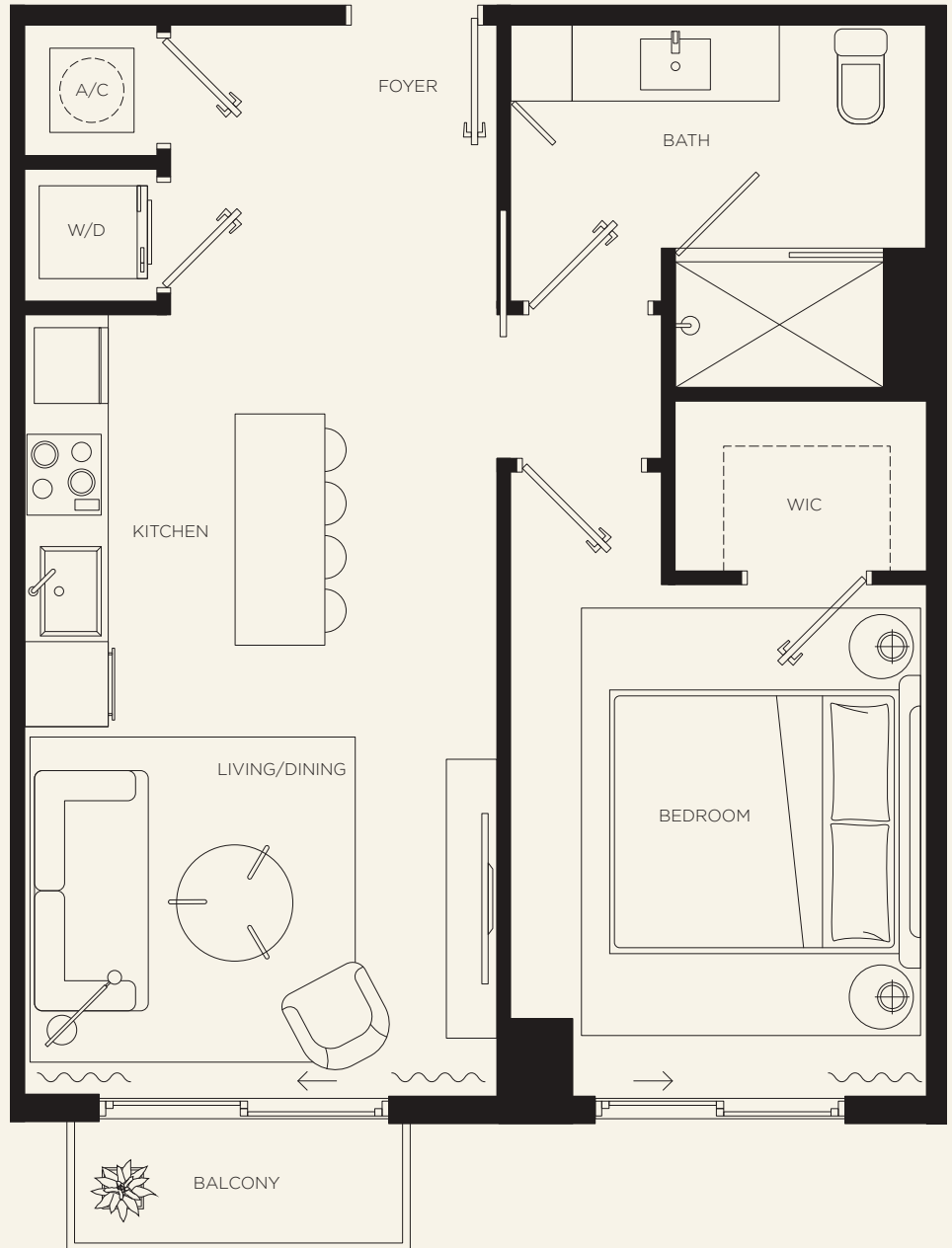


INTERIOR
600 SF | 56 m²

EXTERIOR
30 SF | 3 m²

TOTAL AREA
630 SF | 59 m²

MIAMI LIVING
Downtown Sophistication



786 4374 236
Info@TheCrosbyMiami.com
www.TheCrosbyMiami.com

Sales Gallery
698 NE 1st Avenue, Suite 184
Miami FL 33132



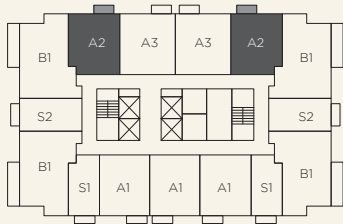
The dimensions stated for this unit floor plan are approximate because there are various recognized methods for calculating the square footage of a unit. The square footage stated here is calculated from the exterior boundaries of the exterior walls to the centerline of interior demising walls without deductions for cutouts, curves, or architectural features. This method typically results in quoted dimensions greater than the dimensions that would be determined by using other accepted methods. The definition of "Unit" and the calculation method to be relied upon is set forth by the Developer, DT G Block, LLC, in Developer's Prospectus and the method set forth in the Developer's Prospectus may result in a square footage calculation less than the method used here. Consult the Developer's Prospectus for information on what is offered with the Unit and the calculation of the Unit square footage and dimensions.

THE CROSBY

MIAMI WORLDCENTER

The RESIDENCES

A2 1 Bed / 1 Bath

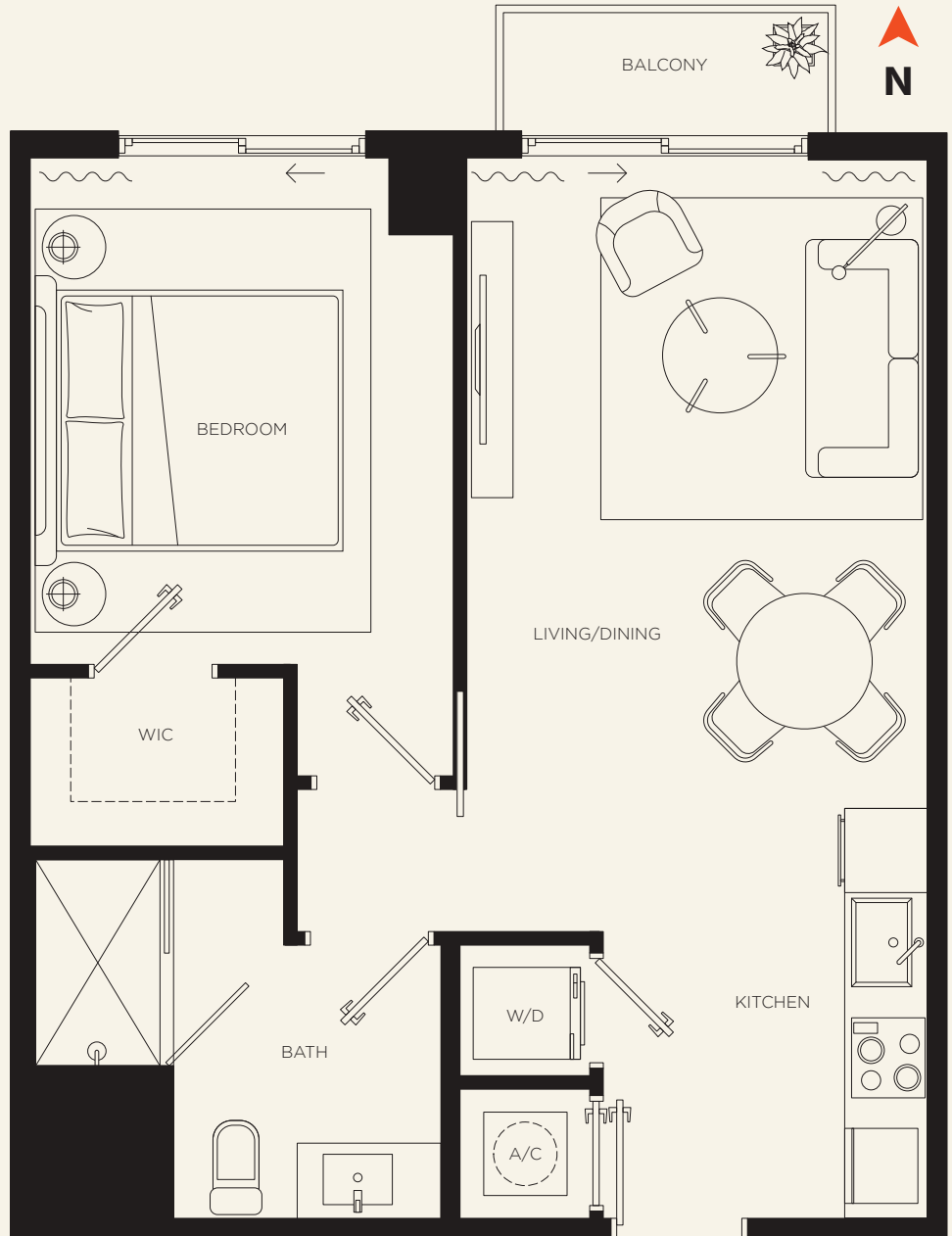


INTERIOR
600 SF | 56 m²

EXTERIOR
30 SF | 3 m²

TOTAL AREA
630 SF | 59 m²

MIAMI LIVING
Downtown Sophistication



ONEWORLD
PROPERTIES

786 4374 236
Info@TheCrosbyMiami.com
www.TheCrosbyMiami.com

Sales Gallery
698 NE 1st Avenue, Suite 184
Miami FL 33132



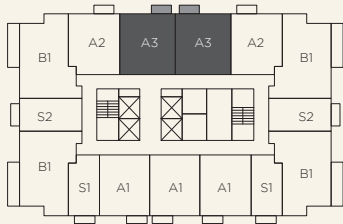
The dimensions stated for this unit floor plan are approximate because there are various recognized methods for calculating the square footage of a unit. The square footage stated here is calculated from the exterior boundaries of the exterior walls to the centerline of interior demising walls without deductions for cutouts, curves, or architectural features. This method typically results in quoted dimensions greater than the dimensions that would be determined by using other accepted methods. The definition of "Unit" and the calculation method to be relied upon is set forth by the Developer, DT G Block, LLC, in Developer's Prospectus and the method set forth in the Developer's Prospectus may result in a square footage calculation less than the method used here. Consult the Developer's Prospectus for information on what is offered with the Unit and the calculation of the Unit square footage and dimensions.

THE CROSBY

MIAMI WORLDCENTER

The RESIDENCES

A3 1 Bed / 1 Bath

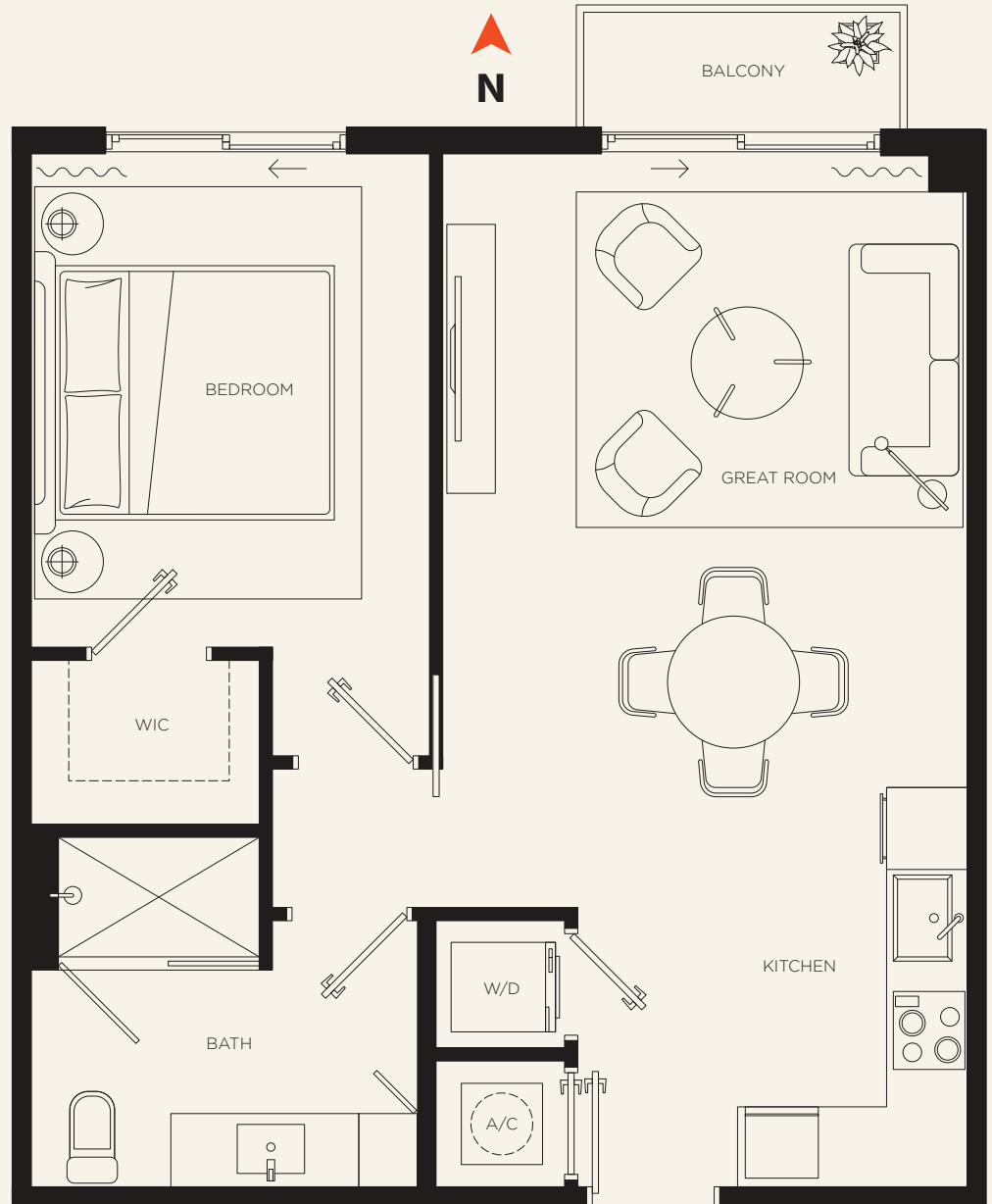


INTERIOR
650 SF | 60 m²

EXTERIOR
30 SF | 3 m²

TOTAL AREA
680 SF | 63 m²

MIAMI LIVING
Downtown Sophistication



786 4374 236
Info@TheCrosbyMiami.com
www.TheCrosbyMiami.com

Sales Gallery
698 NE 1st Avenue, Suite 184
Miami FL 33132



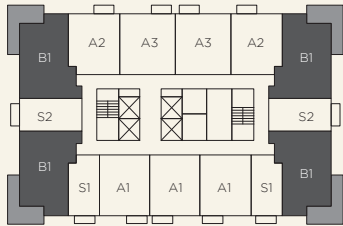
The dimensions stated for this unit floor plan are approximate because there are various recognized methods for calculating the square footage of a unit. The square footage stated here is calculated from the exterior boundaries of the exterior walls to the centerline of interior demising walls without deductions for cutouts, curves, or architectural features. This method typically results in quoted dimensions greater than the dimensions that would be determined by using other accepted methods. The definition of "Unit" and the calculation method to be relied upon is set forth by the Developer, DT G Block, LLC, in Developer's Prospectus and the method set forth in the Developer's Prospectus may result in a square footage calculation less than the method used here. Consult the Developer's Prospectus for information on what is offered with the Unit and the calculation of the Unit square footage and dimensions.

THE CROSBY

MIAMI WORLDCENTER

The RESIDENCES

B1.1 2 Bed / 2 Bath

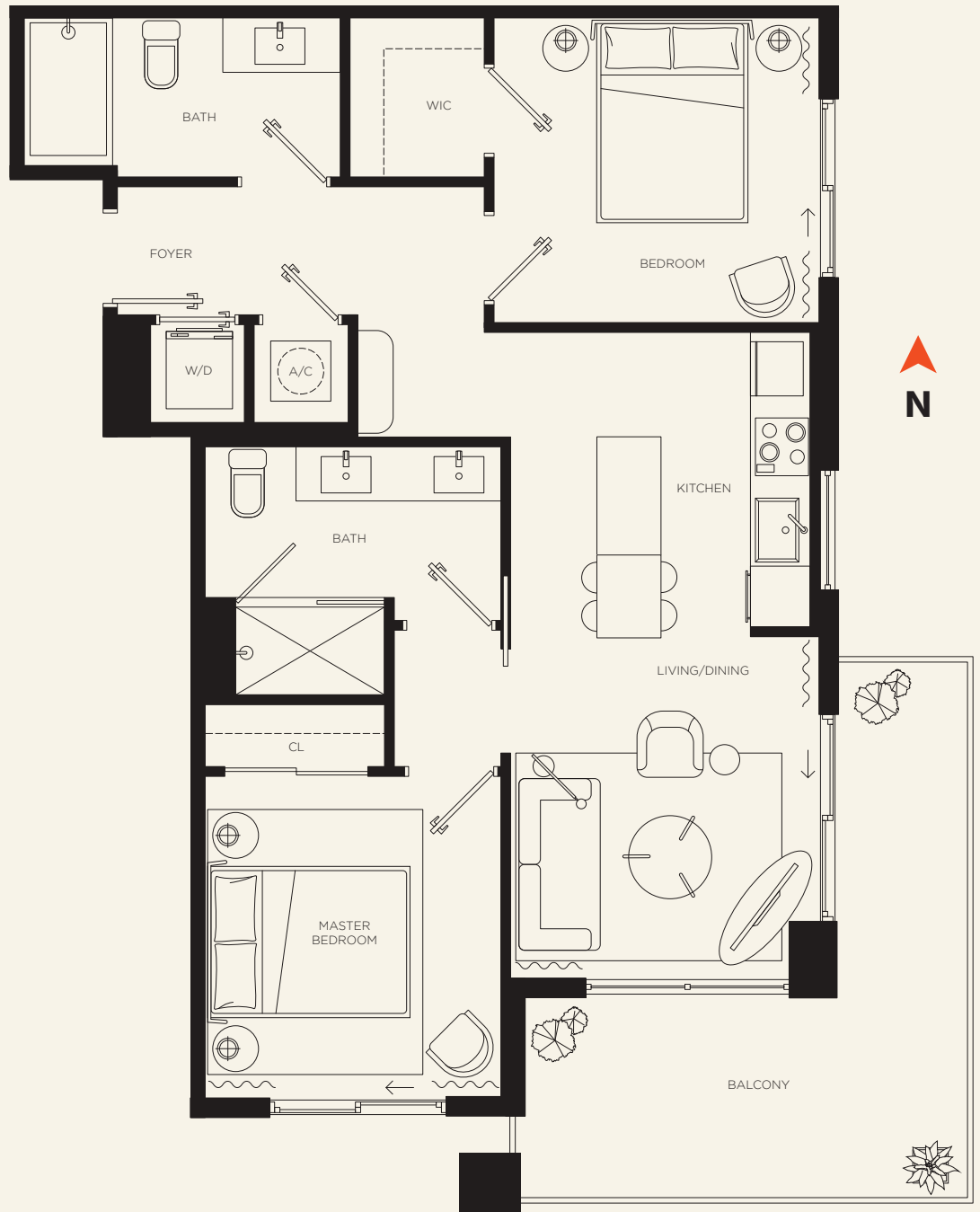


INTERIOR
825 SF | 77 m²

EXTERIOR
175 SF | 16 m²

TOTAL AREA
1000 SF | 93 m²

MIAMI LIVING
Downtown Sophistication



ONWORLD
PROPERTIES

786 4374 236
Info@TheCrosbyMiami.com
www.TheCrosbyMiami.com

Sales Gallery
698 NE 1st Avenue, Suite 184
Miami FL 33132



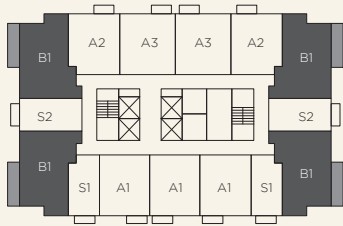
The dimensions stated for this unit floor plan are approximate because there are various recognized methods for calculating the square footage of a unit. The square footage stated here is calculated from the exterior boundaries of the exterior walls to the centerline of interior demising walls without deductions for cutouts, curves, or architectural features. This method typically results in quoted dimensions greater than the dimensions that would be determined by using other accepted methods. The definition of "Unit" and the calculation method to be relied upon is set forth by the Developer, DT G Block, LLC, in Developer's Prospectus and the method set forth in the Developer's Prospectus may result in a square footage calculation less than the method used here. Consult the Developer's Prospectus for information on what is offered with the Unit and the calculation of the Unit square footage and dimensions.

THE CROSBY

MIAMI WORLDCENTER

The RESIDENCES

B1 2 Bed / 2 Bath

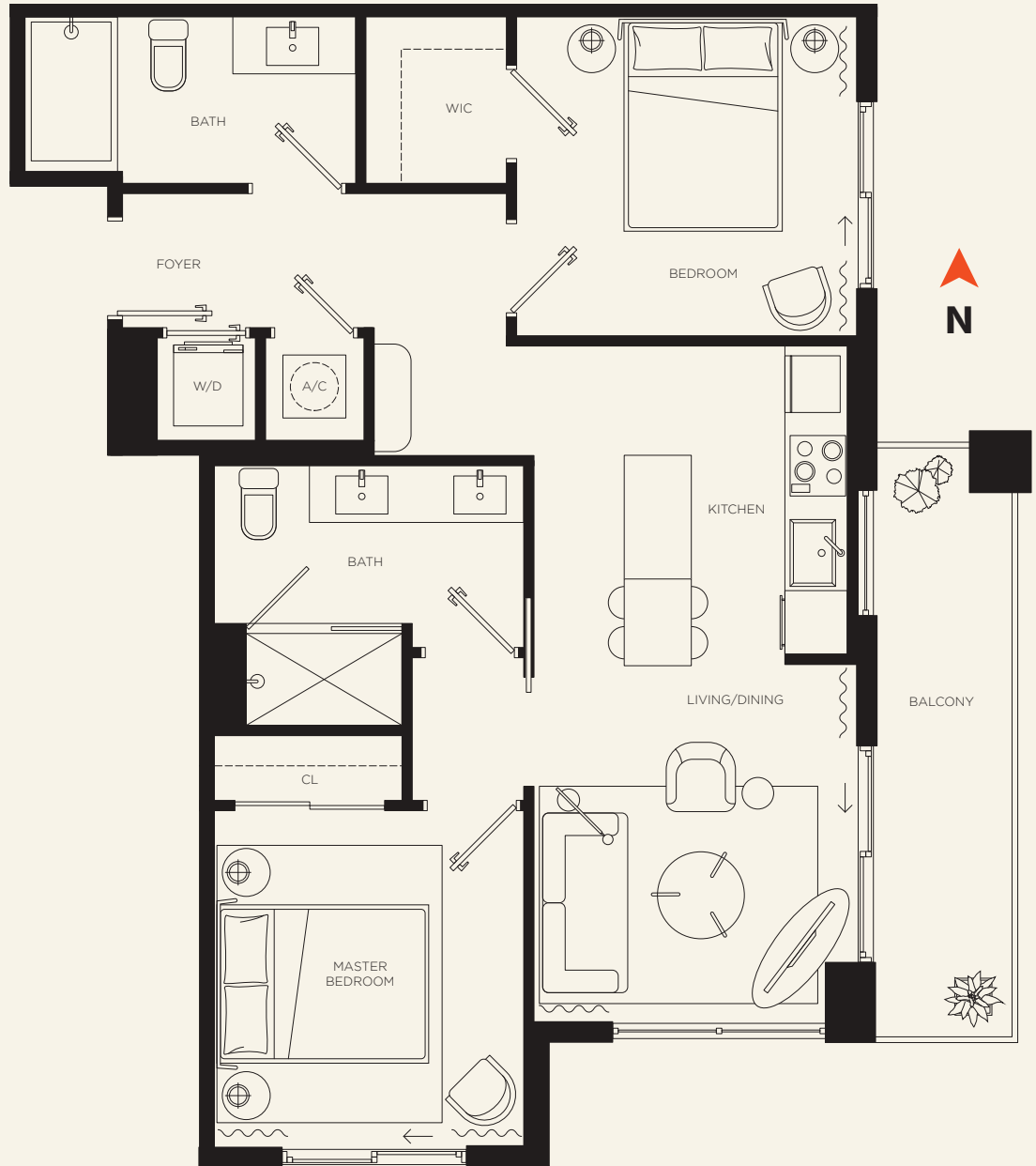


INTERIOR
825 SF | 77 m²

EXTERIOR
100 SF | 9 m²

TOTAL AREA
925 SF | 86 m²

MIAMI LIVING
Downtown Sophistication



786 4374 236
Info@TheCrosbyMiami.com
www.TheCrosbyMiami.com

Sales Gallery
698 NE 1st Avenue, Suite 184
Miami FL 33132



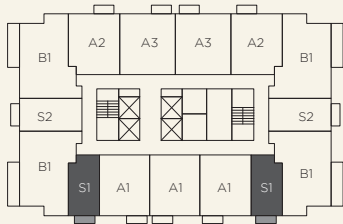
The dimensions stated for this unit floor plan are approximate because there are various recognized methods for calculating the square footage of a unit. The square footage stated here is calculated from the exterior boundaries of the exterior walls to the centerline of interior demising walls without deductions for cutouts, curves, or architectural features. This method typically results in quoted dimensions greater than the dimensions that would be determined by using other accepted methods. The definition of "Unit" and the calculation method to be relied upon is set forth by the Developer, DT G Block, LLC, in Developer's Prospectus and the method set forth in the Developer's Prospectus may result in a square footage calculation less than the method used here. Consult the Developer's Prospectus for information on what is offered with the Unit and the calculation of the Unit square footage and dimensions.

THE CROSBY

MIAMI WORLDCENTER

The RESIDENCES

S1 Studio / 1 Bath

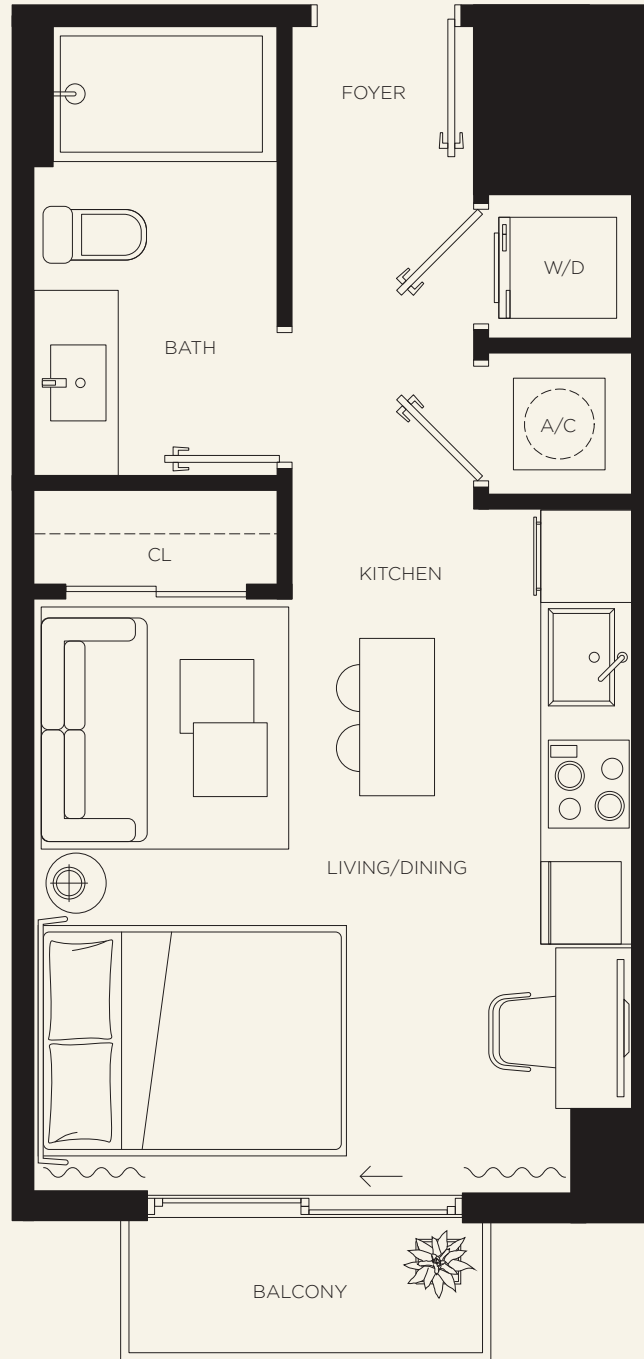


INTERIOR
350 SF | 33 m²

EXTERIOR
30 SF | 3 m²

TOTAL AREA
380 SF | 36 m²

MIAMI LIVING
Downtown Sophistication



ONEWORLD
PROPERTIES

786 4374 236
Info@TheCrosbyMiami.com
www.TheCrosbyMiami.com

Sales Gallery
698 NE 1st Avenue, Suite 184
Miami FL 33132



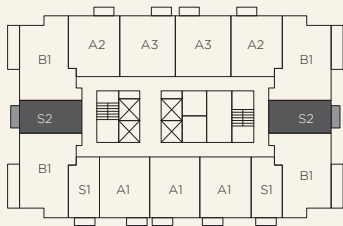
The dimensions stated for this unit floor plan are approximate because there are various recognized methods for calculating the square footage of a unit. The square footage stated here is calculated from the exterior boundaries of the exterior walls to the centerline of interior demising walls without deductions for cutouts, curves, or architectural features. This method typically results in quoted dimensions greater than the dimensions that would be determined by using other accepted methods. The definition of "Unit" and the calculation method to be relied upon is set forth by the Developer, DT G Block, LLC, in Developer's Prospectus and the method set forth in the Developer's Prospectus may result in a square footage calculation less than the method used here. Consult the Developer's Prospectus for information on what is offered with the Unit and the calculation of the Unit square footage and dimensions.

THE CROSBY

MIAMI WORLDCENTER

The RESIDENCES

S2 Studio / 1 Bath

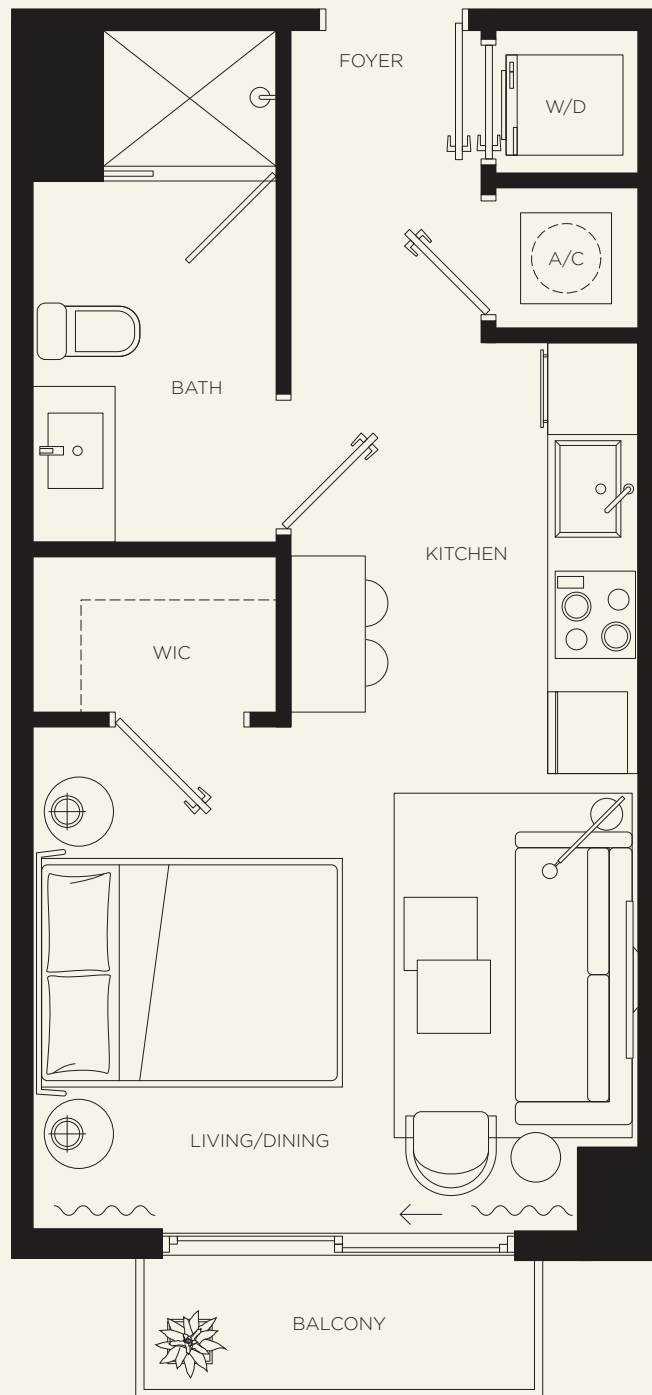


INTERIOR
400 SF | 37 m²

EXTERIOR
30 SF | 3 m²

TOTAL AREA
430 SF | 40 m²

MIAMI LIVING
Downtown Sophistication



ONEWORLD
PROPERTIES

786 4374 236
Info@TheCrosbyMiami.com
www.TheCrosbyMiami.com

Sales Gallery
698 NE 1st Avenue, Suite 184
Miami FL 33132



The dimensions stated for this unit floor plan are approximate because there are various recognized methods for calculating the square footage of a unit. The square footage stated here is calculated from the exterior boundaries of the exterior walls to the centerline of interior demising walls without deductions for cutouts, curves, or architectural features. This method typically results in quoted dimensions greater than the dimensions that would be determined by using other accepted methods. The definition of "Unit" and the calculation method to be relied upon is set forth by the Developer, DT G Block, LLC, in Developer's Prospectus and the method set forth in the Developer's Prospectus may result in a square footage calculation less than the method used here. Consult the Developer's Prospectus for information on what is offered with the Unit and the calculation of the Unit square footage and dimensions.