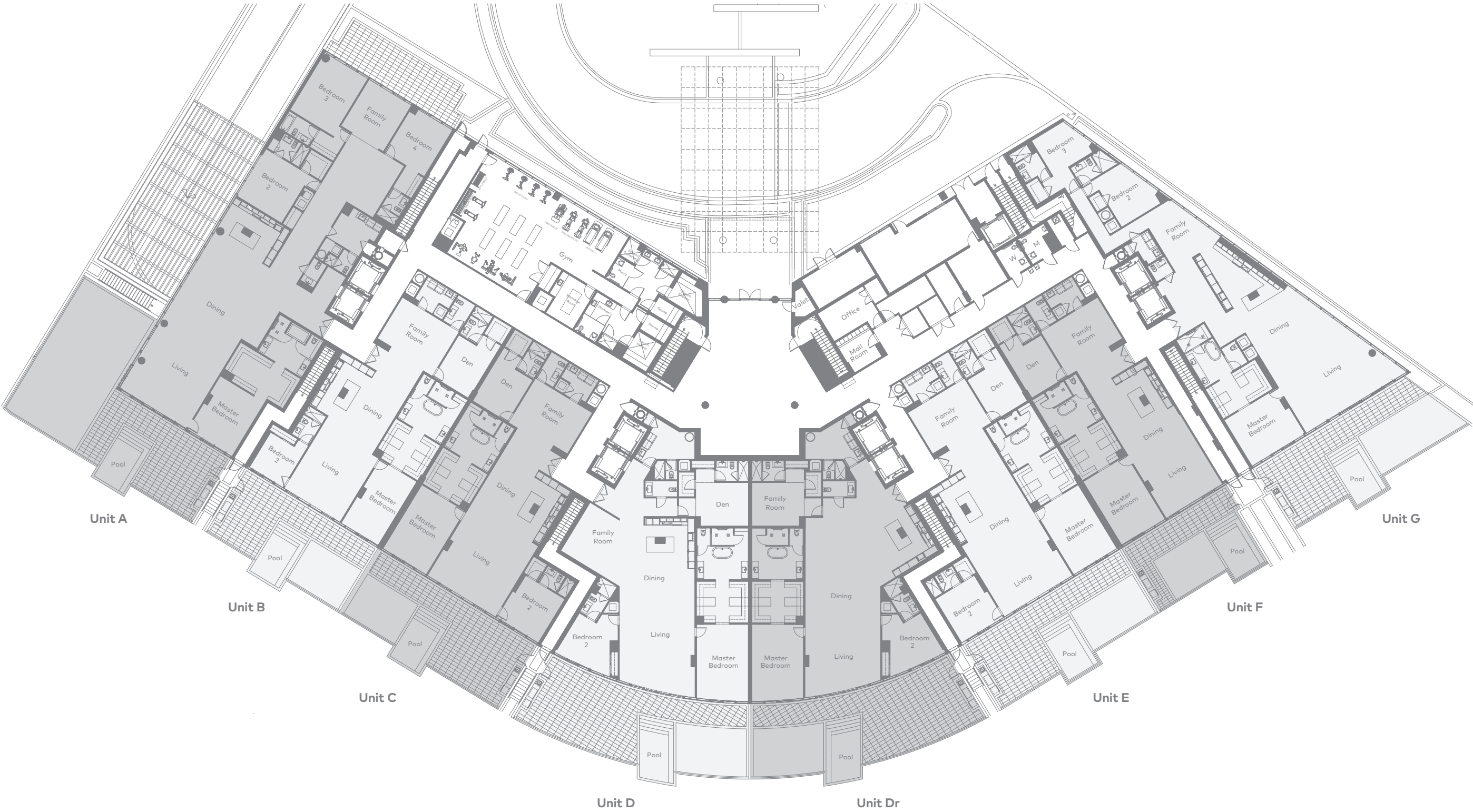


# BOCA BEACH HOUSE

KEYPLAN – LANAI UNITS

# KEY PLAN LANAI UNITS



**Unit A**  
Bedrooms: 4  
Bathrooms: 5.5  
Dens: 2  
Interior: 5,029 SqFt  
Exterior: 2,513 SqFt  
Total: 7,542 SqFt

**Unit B**  
Bedrooms: 2  
Bathrooms: 3.5  
Dens: 2  
Interior: 2,907 SqFt  
Exterior: 1,048 SqFt  
Total: 3,955 SqFt

**Unit C**  
Bedrooms: 2  
Bathrooms: 3.5  
Dens: 2  
Interior: 3,126 SqFt  
Exterior: 1,236 SqFt  
Total: 4,362 SqFt


**Unit D**  
Bedrooms: 2  
Bathrooms: 4.5  
Dens: 2  
Interior: 3,550 SqFt  
Exterior: 1,485 SqFt  
Total: 5,035 SqFt

**Unit E**  
Bedrooms: 2  
Bathrooms: 3.5  
Dens: 2  
Interior: 3,128 SqFt  
Exterior: 1,224 SqFt  
Total: 4,352 SqFt

**Unit F**  
Bedrooms: 1  
Bathrooms: 2.5  
Dens: 2  
Interior: 2,582 SqFt  
Exterior: 806 SqFt  
Total: 3,388 SqFt

**Unit G**  
Bedrooms: 3  
Bathrooms: 3.5  
Dens: 1  
Interior: 3,801 SqFt  
Exterior: 1,253 SqFt  
Total: 5,054 SqFt

**Unit Dr**  
Bedrooms: 2  
Bathrooms: 4.5  
Dens: 1  
Interior: 3,550 SqFt  
Exterior: 1,485 SqFt  
Total: 5,035 SqFt

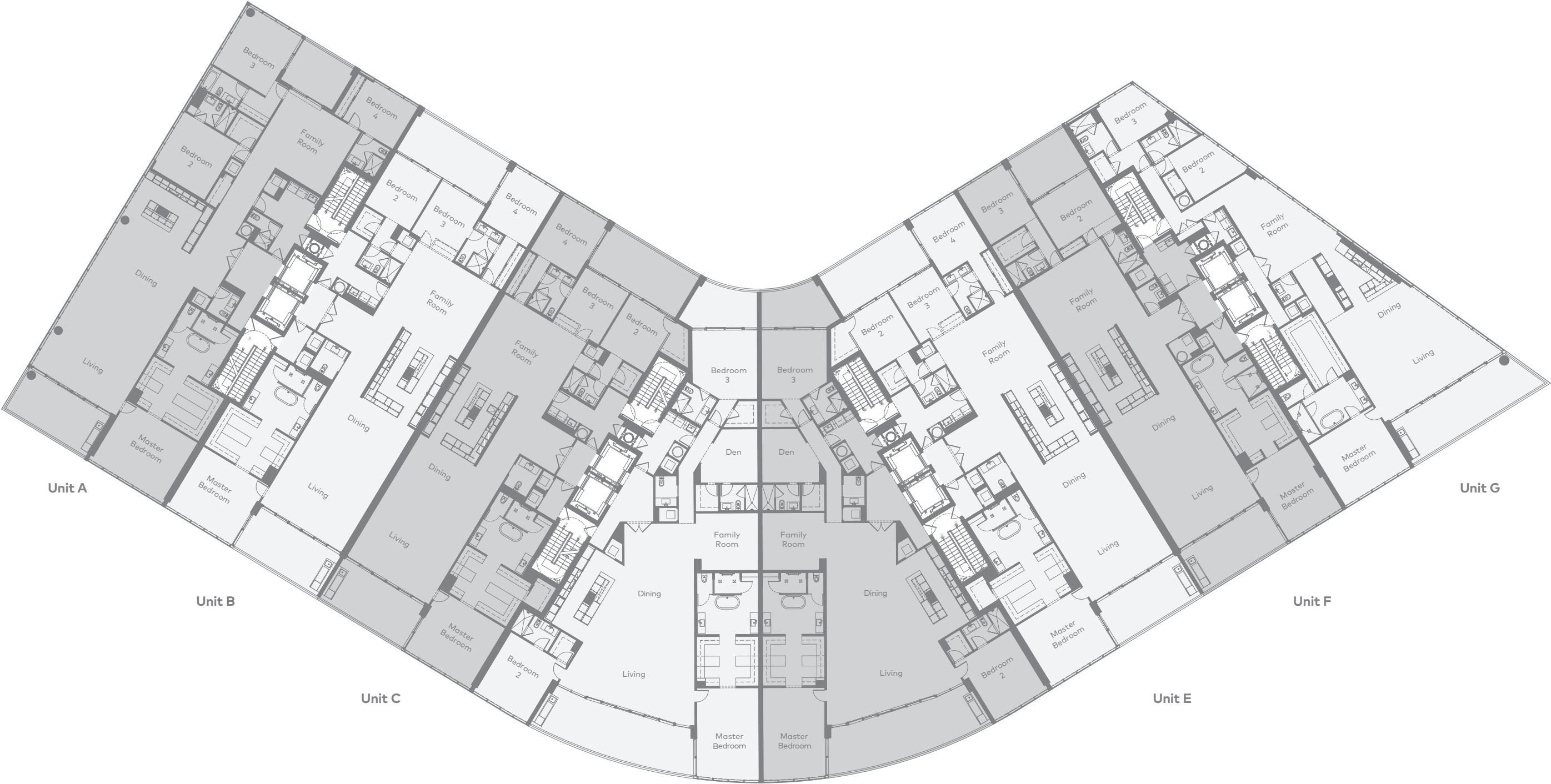
All depictions of matters of detail shown hereon, including, without limitation, items of finish, furniture and decoration, are conceptual only and are not necessarily included in the Unit. Furnishings are only included if and to the extent provided in your purchase agreement. Stated square footages and dimensions shown hereon are approximate and are measured to the exterior face of exterior walls and to the center line of demising walls. This method of measurement varies from, and is larger than, the dimensions that would be determined by using the description and definition of the "Unit" set forth in the Declaration (which generally only includes the interior airspace between the perimeter walls and excludes interior structural components). For your reference, the area of the Unit, determined in accordance with these defined unit boundaries, is referenced on Exhibit "3" to the Declaration included in the Prospectus. Note that measurements of rooms set forth on this floor plan are generally taken at the greatest points of each given room (as if the room were a perfect rectangle), without regard for any cutouts. Accordingly, the area of the actual room will typically be smaller than the product obtained by multiplying the stated length times width. All dimensions are approximate and may vary with actual construction, and all floor plans, specifications and other development plans are subject to change and will not necessarily accurately reflect the final plans and specifications for the development. 

# BOCA BEACH HOUSE

KEY PLAN – UPPER LEVEL UNITS

# KEY PLAN

## UPPER LEVEL UNITS



**Unit A**  
Bedrooms: 4  
Bathrooms: 5.5  
Dens: 1  
Interior: 4,639 SqFt  
Exterior: 459 SqFt  
Total: 5,098 SqFt

**Unit B**  
Bedrooms: 4  
Bathrooms: 3.5  
Dens: 1  
Interior: 4,205 SqFt  
Exterior: 600 SqFt  
Total: 4,805 SqFt

**Unit C**  
Bedrooms: 4  
Bathrooms: 3.5  
Dens: 1  
Interior: 4,320 SqFt  
Exterior: 600 SqFt  
Total: 4,920 SqFt


**Unit D**  
Bedrooms: 3  
Bathrooms: 4.5  
Dens: 2  
Interior: 4,109 SqFt  
Exterior: 651 SqFt  
Total: 4,760 SqFt

**Unit E**  
Bedrooms: 4  
Bathrooms: 3.5  
Dens: 1  
Interior: 4,320 SqFt  
Exterior: 601 SqFt  
Total: 4,921 SqFt

**Unit F**  
Bedrooms: 3  
Bathrooms: 3.5  
Dens: 1  
Interior: 3,876 SqFt  
Exterior: 490 SqFt  
Total: 4,366 SqFt

**Unit G**  
Bedrooms: 3  
Bathrooms: 3.5  
Dens: 1  
Interior: 3,419 SqFt  
Exterior: 437 SqFt  
Total: 3,856 SqFt

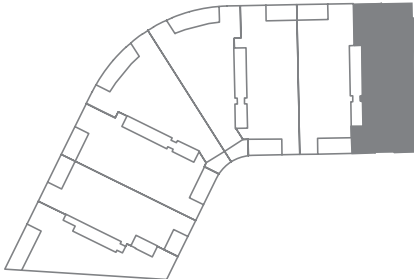
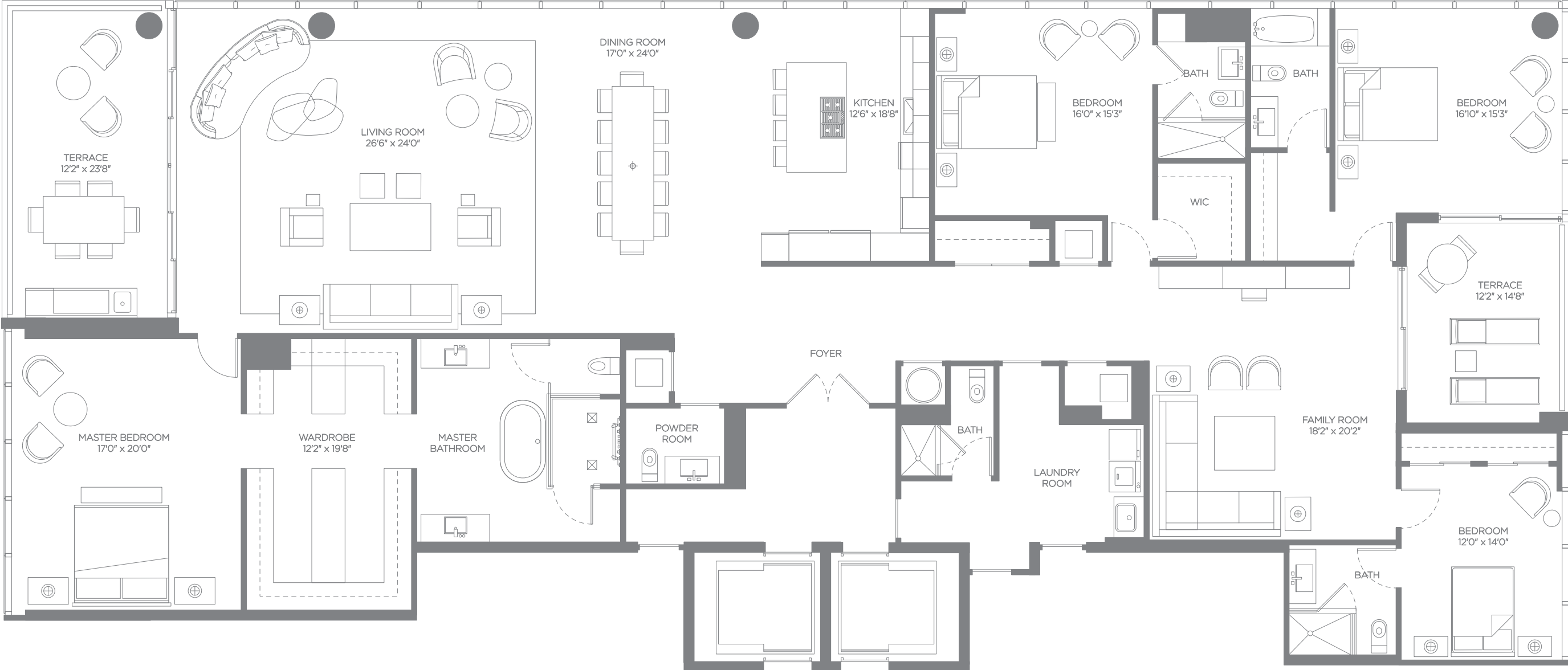
**Unit Dr**  
Bedrooms: 3  
Bathrooms: 4.5  
Dens: 2  
Interior: 4,109 SqFt  
Exterior: 651 SqFt  
Total: 4,760 SqFt

All depictions of matters of detail shown hereon, including, without limitation, items of finish, furniture and decoration, are conceptual only and are not necessarily included in the Unit. Furnishings are only included if and to the extent provided in your purchase agreement. Stated square footages and dimensions shown hereon are approximate and are measured to the exterior face of exterior walls and to the center line of demising walls. This method of measurement varies from, and is larger than, the dimensions that would be determined by using the description and definition of the "Unit" set forth in the Declaration (which generally only includes the interior airspace between the perimeter walls and excludes interior structural components). For your reference, the area of the Unit, determined in accordance with these defined unit boundaries, is referenced on Exhibit "3" to the Declaration included in the Prospectus. Note that measurements of rooms set forth on this floor plan are generally taken at the greatest points of each given room (as if the room were a perfect rectangle), without regard for any cutouts. Accordingly, the area of the actual room will typically be smaller than the product obtained by multiplying the stated length times width. All dimensions are approximate and may vary with actual construction, and all floor plans, specifications and other development plans are subject to change and will not necessarily accurately reflect the final plans and specifications for the development. 

# BOCA BEACH HOUSE

RESIDENCE A

# RESIDENCE A FLOORPLAN




**DESCRIPTION**

Bedrooms: 4  
Bathrooms: 5.5  
Dens: 1

**SIZE**

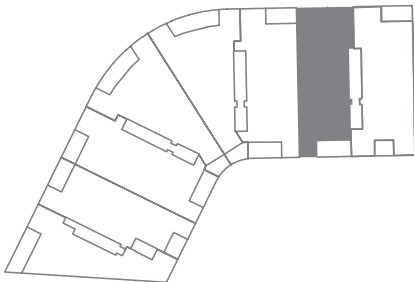
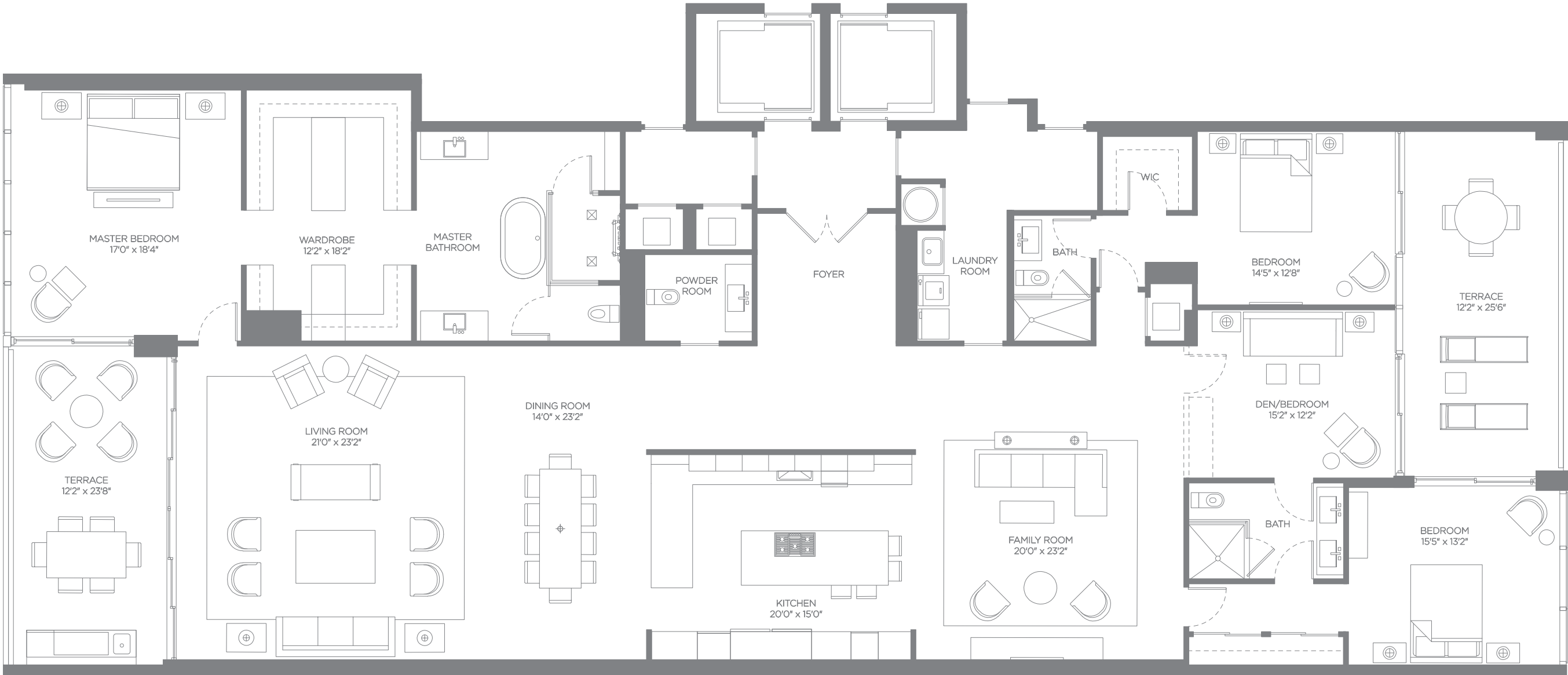
Interior: 4,639 SqFt  
Exterior: 459 SqFt  
Total: 5,098 SqFt

All depictions of matters of detail shown hereon, including, without limitation, items of finish, furniture and decoration, are conceptual only and are not necessarily included in the Unit. Furnishings are only included if and to the extent provided in your purchase agreement. Stated square footages and dimensions shown hereon are approximate and are measured to the exterior face of exterior walls and to the center line of demising walls. This method of measurement varies from, and is larger than, the dimensions that would be determined by using the description and definition of the "Unit" set forth in the Declaration (which generally only includes the interior airspace between the perimeter walls and excludes interior structural components). For your reference, the area of the Unit, determined in accordance with these defined unit boundaries, is referenced on Exhibit "3" to the Declaration included in the Prospectus. Note that measurements of rooms set forth on this floor plan are generally taken at the greatest points of each given room (as if the room were a perfect rectangle), without regard for any cutouts. Accordingly, the area of the actual room will typically be smaller than the product obtained by multiplying the stated length times width. All dimensions are approximate and may vary with actual construction, and all floor plans, specifications and other development plans are subject to change and will not necessarily accurately reflect the final plans and specifications for the development. 

# BOCA BEACH HOUSE

RESIDENCE B

# RESIDENCE B FLOORPLAN




**DESCRIPTION**

Bedrooms: 4  
Bathrooms: 3.5  
Dens: 1

**SIZE**

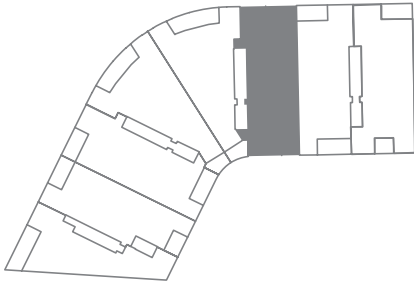
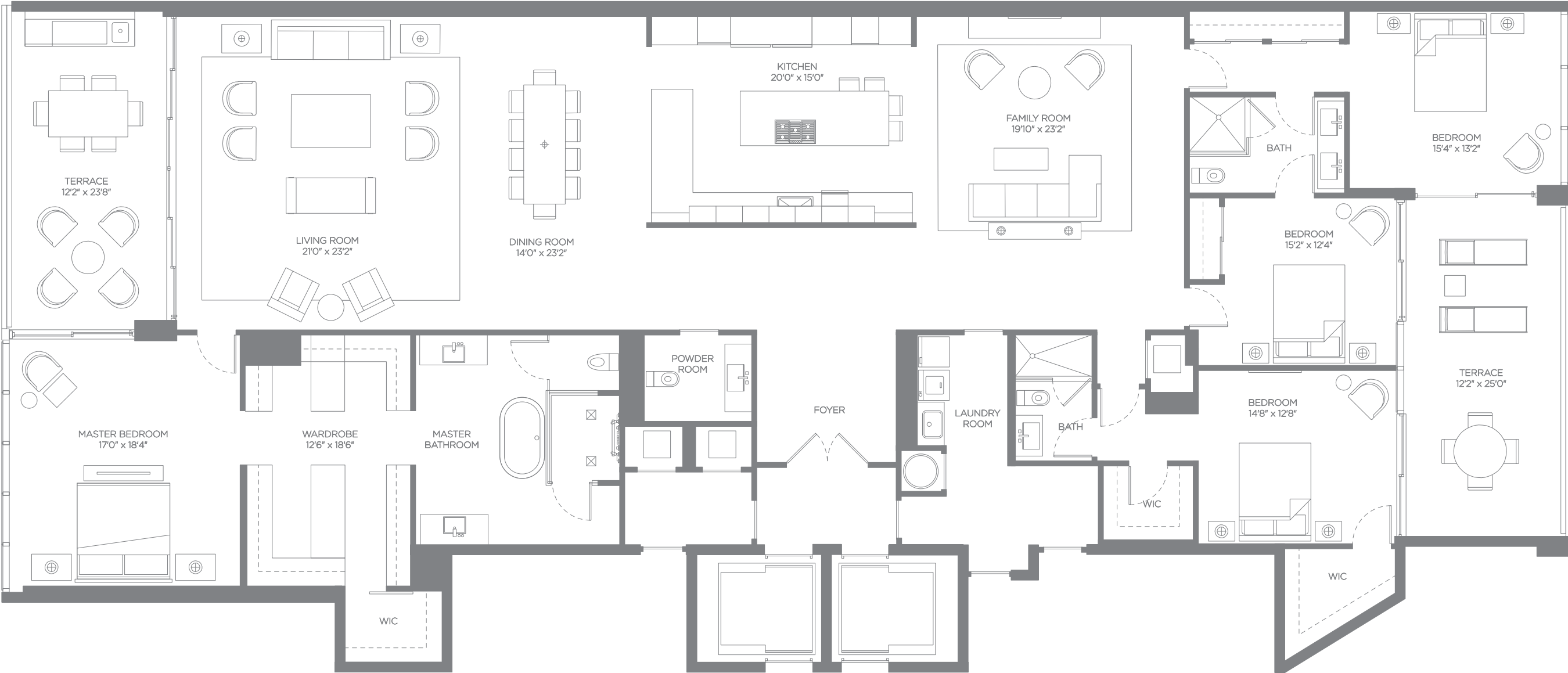
Interior: 4,205 SqFt  
Exterior: 600 SqFt  
Total: 4,805 SqFt

All depictions of matters of detail shown hereon, including, without limitation, items of finish, furniture and decoration, are conceptual only and are not necessarily included in the Unit. Furnishings are only included if and to the extent provided in your purchase agreement. Stated square footages and dimensions shown hereon are approximate and are measured to the exterior face of exterior walls and to the center line of demising walls. This method of measurement varies from, and is larger than, the dimensions that would be determined by using the description and definition of the "Unit" set forth in the Declaration (which generally only includes the interior airspace between the perimeter walls and excludes interior structural components). For your reference, the area of the Unit, determined in accordance with these defined unit boundaries, is referenced on Exhibit "3" to the Declaration included in the Prospectus. Note that measurements of rooms set forth on this floor plan are generally taken at the greatest points of each given room (as if the room were a perfect rectangle), without regard for any cutouts. Accordingly, the area of the actual room will typically be smaller than the product obtained by multiplying the stated length times width. All dimensions are approximate and may vary with actual construction, and all floor plans, specifications and other development plans are subject to change and will not necessarily accurately reflect the final plans and specifications for the development. 

# BOCA BEACH HOUSE

RESIDENCE C

# RESIDENCE C FLOORPLAN




## DESCRIPTION

Bedrooms: 4  
Bathrooms: 3.5  
Dens: 1

## SIZE

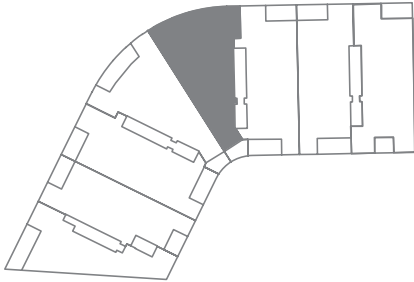
Interior: 4,320 SqFt  
Exterior: 600 SqFt  
Total: 4,920 SqFt

All depictions of matters of detail shown hereon, including, without limitation, items of finish, furniture and decoration, are conceptual only and are not necessarily included in the Unit. Furnishings are only included if and to the extent provided in your purchase agreement. Stated square footages and dimensions shown hereon are approximate and are measured to the exterior face of exterior walls and to the center line of demising walls. This method of measurement varies from, and is larger than, the dimensions that would be determined by using the description and definition of the "Unit" set forth in the Declaration (which generally only includes the interior airspace between the perimeter walls and excludes interior structural components). For your reference, the area of the Unit, determined in accordance with these defined unit boundaries, is referenced on Exhibit "3" to the Declaration included in the Prospectus. Note that measurements of rooms set forth on this floor plan are generally taken at the greatest points of each given room (as if the room were a perfect rectangle), without regard for any cutouts. Accordingly, the area of the actual room will typically be smaller than the product obtained by multiplying the stated length times width. All dimensions are approximate and may vary with actual construction, and all floor plans, specifications and other development plans are subject to change and will not necessarily accurately reflect the final plans and specifications for the development. 

# BOCA BEACH HOUSE

RESIDENCE D

# RESIDENCE D FLOORPLAN




**DESCRIPTION**

Bedrooms: 3  
Bathrooms: 4.5  
Dens: 2

**SIZE**

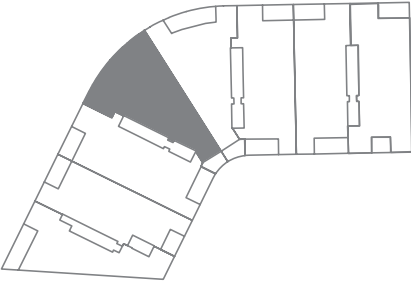
Interior: 4,109 SqFt  
Exterior: 651 SqFt  
Total: 4,760 SqFt

All depictions of matters of detail shown hereon, including, without limitation, items of finish, furniture and decoration, are conceptual only and are not necessarily included in the Unit. Furnishings are only included if and to the extent provided in your purchase agreement. Stated square footages and dimensions shown hereon are approximate and are measured to the exterior face of exterior walls and to the center line of demising walls. This method of measurement varies from, and is larger than, the dimensions that would be determined by using the description and definition of the "Unit" set forth in the Declaration (which generally only includes the interior airspace between the perimeter walls and excludes interior structural components). For your reference, the area of the Unit, determined in accordance with these defined unit boundaries, is referenced on Exhibit "3" to the Declaration included in the Prospectus. Note that measurements of rooms set forth on this floor plan are generally taken at the greatest points of each given room (as if the room were a perfect rectangle), without regard for any cutouts. Accordingly, the area of the actual room will typically be smaller than the product obtained by multiplying the stated length times width. All dimensions are approximate and may vary with actual construction, and all floor plans, specifications and other development plans are subject to change and will not necessarily accurately reflect the final plans and specifications for the development. 

# BOCA BEACH HOUSE

RESIDENCE Dr

# RESIDENCE Dr FLOORPLAN




**DESCRIPTION**

Bedrooms: 3  
Bathrooms: 4.5  
Dens: 2

**SIZE**

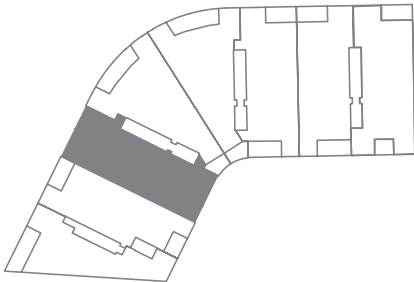
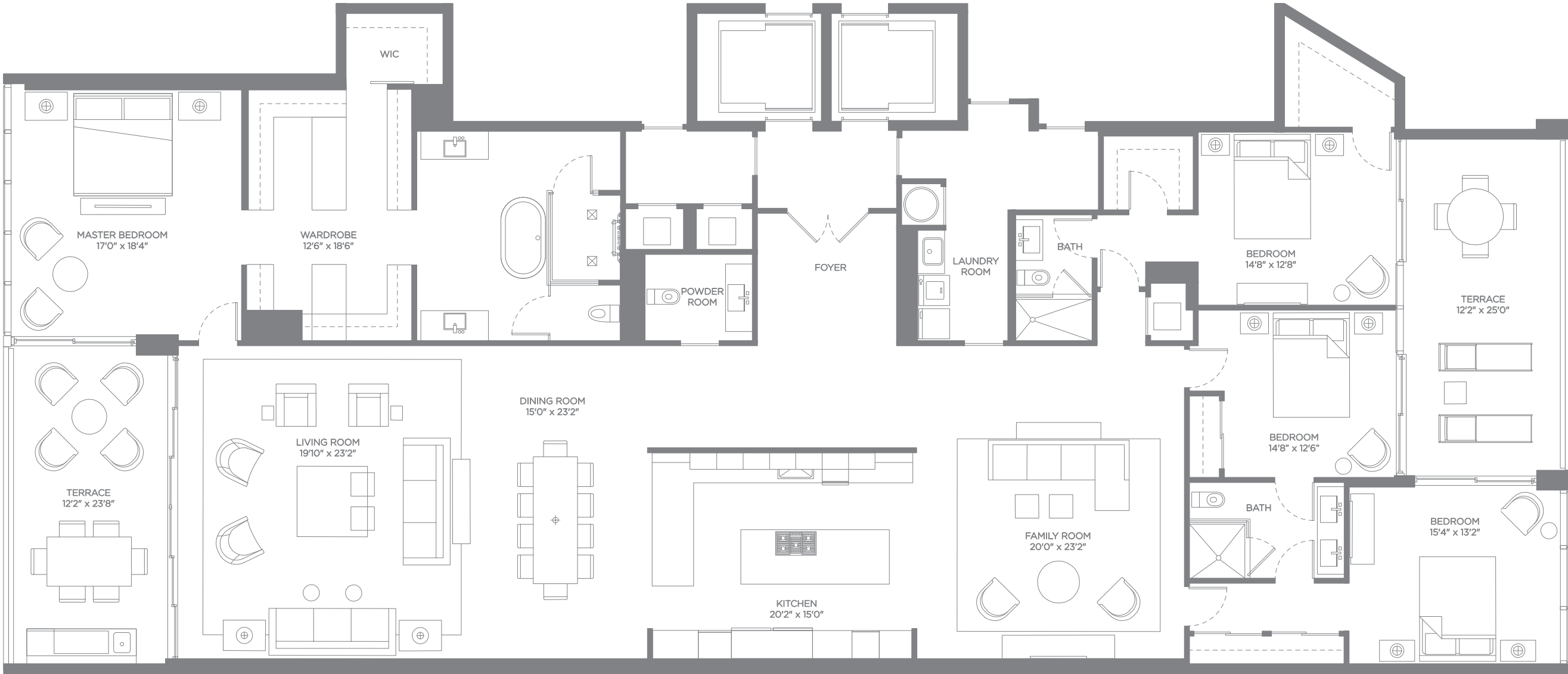
Interior: 4,109 SqFt  
Exterior: 651 SqFt  
Total: 4,760 SqFt

All depictions of matters of detail shown hereon, including, without limitation, items of finish, furniture and decoration, are conceptual only and are not necessarily included in the Unit. Furnishings are only included if and to the extent provided in your purchase agreement. Stated square footages and dimensions shown hereon are approximate and are measured to the exterior face of exterior walls and to the center line of demising walls. This method of measurement varies from, and is larger than, the dimensions that would be determined by using the description and definition of the "Unit" set forth in the Declaration (which generally only includes the interior airspace between the perimeter walls and excludes interior structural components). For your reference, the area of the Unit, determined in accordance with these defined unit boundaries, is referenced on Exhibit "3" to the Declaration included in the Prospectus. Note that measurements of rooms set forth on this floor plan are generally taken at the greatest points of each given room (as if the room were a perfect rectangle), without regard for any cutouts. Accordingly, the area of the actual room will typically be smaller than the product obtained by multiplying the stated length times width. All dimensions are approximate and may vary with actual construction, and all floor plans, specifications and other development plans are subject to change and will not necessarily accurately reflect the final plans and specifications for the development. 

BOCA  
BEACH  
HOUSE

RESIDENCE E

# RESIDENCE E FLOORPLAN




**DESCRIPTION**

Bedrooms: 4  
Bathrooms: 3.5  
Dens: 1

**SIZE**

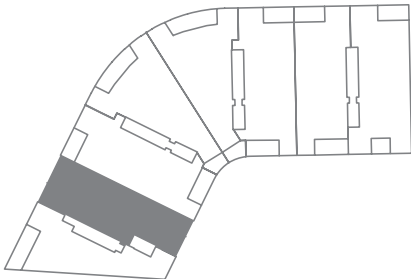
Interior: 4,320 SqFt  
Exterior: 601 SqFt  
Total: 4,921 SqFt

All depictions of matters of detail shown hereon, including, without limitation, items of finish, furniture and decoration, are conceptual only and are not necessarily included in the Unit. Furnishings are only included if and to the extent provided in your purchase agreement. Stated square footages and dimensions shown hereon are approximate and are measured to the exterior face of exterior walls and to the center line of demising walls. This method of measurement varies from, and is larger than, the dimensions that would be determined by using the description and definition of the "Unit" set forth in the Declaration (which generally only includes the interior airspace between the perimeter walls and excludes interior structural components). For your reference, the area of the Unit, determined in accordance with these defined unit boundaries, is referenced on Exhibit "3" to the Declaration included in the Prospectus. Note that measurements of rooms set forth on this floor plan are generally taken at the greatest points of each given room (as if the room were a perfect rectangle), without regard for any cutouts. Accordingly, the area of the actual room will typically be smaller than the product obtained by multiplying the stated length times width. All dimensions are approximate and may vary with actual construction, and all floor plans, specifications and other development plans are subject to change and will not necessarily accurately reflect the final plans and specifications for the development. 

# BOCA BEACH HOUSE

RESIDENCE F

# RESIDENCE F FLOORPLAN




## DESCRIPTION

Bedrooms: 3  
Bathrooms: 3.5  
Dens: 1

## SIZE

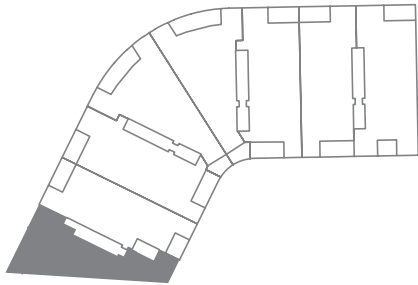
Interior: 3,876 SqFt  
Exterior: 490 SqFt  
Total: 4,366 SqFt

All depictions of matters of detail shown hereon, including, without limitation, items of finish, furniture and decoration, are conceptual only and are not necessarily included in the Unit. Furnishings are only included if and to the extent provided in your purchase agreement. Stated square footages and dimensions shown hereon are approximate and are measured to the exterior face of exterior walls and to the center line of demising walls. This method of measurement varies from, and is larger than, the dimensions that would be determined by using the description and definition of the "Unit" set forth in the Declaration (which generally only includes the interior airspace between the perimeter walls and excludes interior structural components). For your reference, the area of the Unit, determined in accordance with these defined unit boundaries, is referenced on Exhibit "3" to the Declaration included in the Prospectus. Note that measurements of rooms set forth on this floor plan are generally taken at the greatest points of each given room (as if the room were a perfect rectangle), without regard for any cutouts. Accordingly, the area of the actual room will typically be smaller than the product obtained by multiplying the stated length times width. All dimensions are approximate and may vary with actual construction, and all floor plans, specifications and other development plans are subject to change and will not necessarily accurately reflect the final plans and specifications for the development. 

# BOCA BEACH HOUSE

RESIDENCE G

# RESIDENCE G FLOORPLAN




**DESCRIPTION**

Bedrooms: 3  
Bathrooms: 3.5  
Dens: 1

**SIZE**

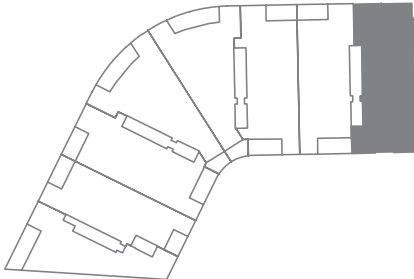
Interior: 3,419 SqFt  
Exterior: 437 SqFt  
Total: 3,856 SqFt

All depictions of matters of detail shown hereon, including, without limitation, items of finish, furniture and decoration, are conceptual only and are not necessarily included in the Unit. Furnishings are only included if and to the extent provided in your purchase agreement. Stated square footages and dimensions shown hereon are approximate and are measured to the exterior face of exterior walls and to the center line of demising walls. This method of measurement varies from, and is larger than, the dimensions that would be determined by using the description and definition of the "Unit" set forth in the Declaration (which generally only includes the interior airspace between the perimeter walls and excludes interior structural components). For your reference, the area of the Unit, determined in accordance with these defined unit boundaries, is referenced on Exhibit "3" to the Declaration included in the Prospectus. Note that measurements of rooms set forth on this floor plan are generally taken at the greatest points of each given room (as if the room were a perfect rectangle), without regard for any cutouts. Accordingly, the area of the actual room will typically be smaller than the product obtained by multiplying the stated length times width. All dimensions are approximate and may vary with actual construction, and all floor plans, specifications and other development plans are subject to change and will not necessarily accurately reflect the final plans and specifications for the development. 

# BOCA BEACH HOUSE

RESIDENCE A — LANAI

# RESIDENCE A LANAI




## DESCRIPTION

Bedrooms: 4  
Bathrooms: 5.5  
Dens: 2

## SIZE

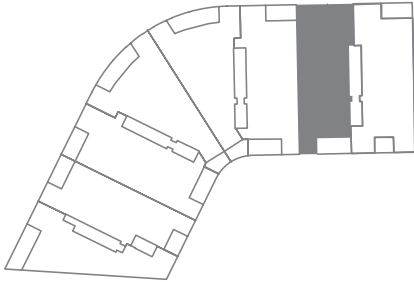
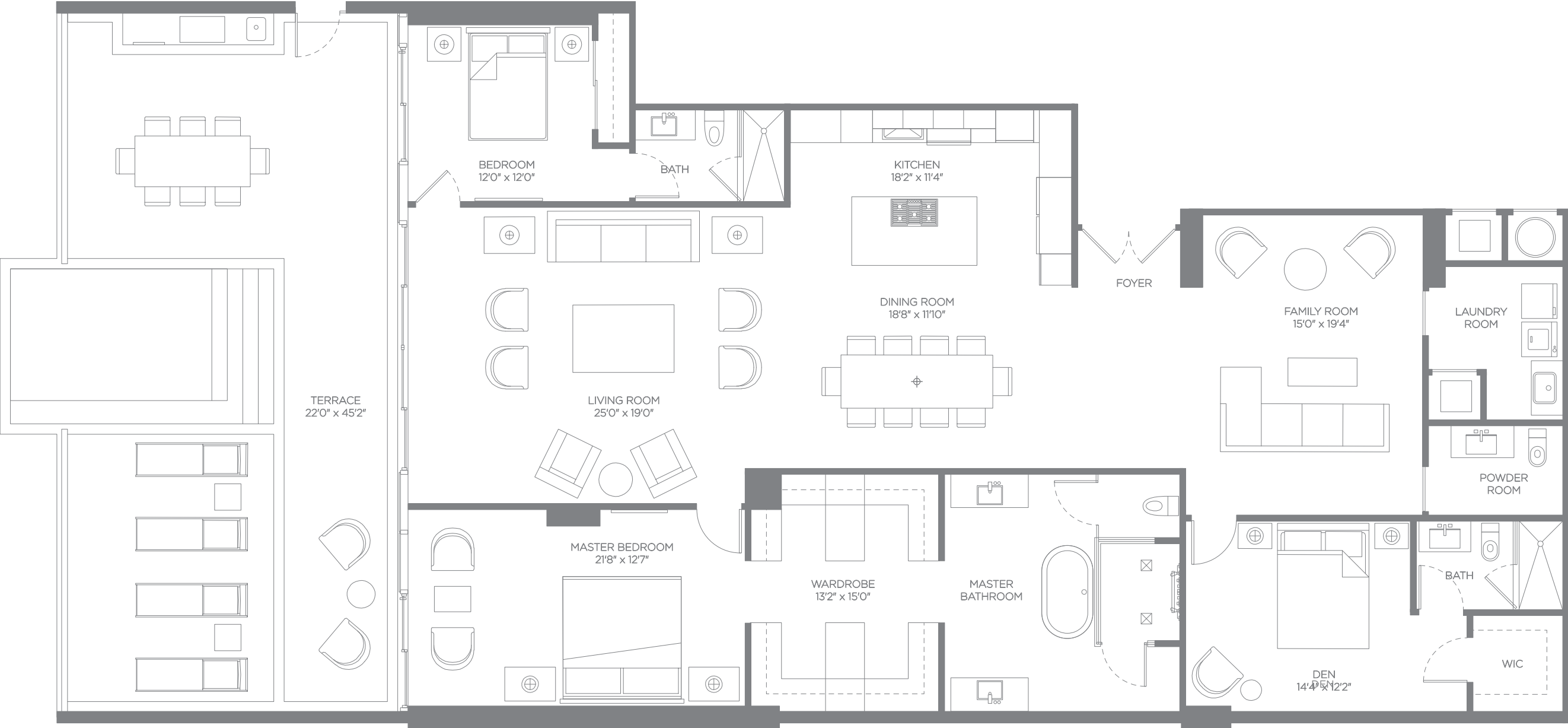
Interior: 5,029 SqFt  
Exterior: 2,513 SqFt  
Total: 7,542 SqFt

All depictions of matters of detail shown hereon, including, without limitation, items of finish, furniture and decoration, are conceptual only and are not necessarily included in the Unit. Furnishings are only included if and to the extent provided in your purchase agreement. Stated square footages and dimensions shown hereon are approximate and are measured to the exterior face of exterior walls and to the center line of demising walls. This method of measurement varies from, and is larger than, the dimensions that would be determined by using the description and definition of the "Unit" set forth in the Declaration (which generally only includes the interior airspace between the perimeter walls and excludes interior structural components). For your reference, the area of the Unit, determined in accordance with these defined unit boundaries, is referenced on Exhibit "3" to the Declaration included in the Prospectus. Note that measurements of rooms set forth on this floor plan are generally taken at the greatest points of each given room (as if the room were a perfect rectangle), without regard for any cutouts. Accordingly, the area of the actual room will typically be smaller than the product obtained by multiplying the stated length times width. All dimensions are approximate and may vary with actual construction, and all floor plans, specifications and other development plans are subject to change and will not necessarily accurately reflect the final plans and specifications for the development. 

# BOCA BEACH HOUSE

RESIDENCE B — LANAI

# RESIDENCE B LANAI




**DESCRIPTION**

Bedrooms: 2  
Bathrooms: 3.5  
Dens: 2

**SIZE**

Interior: 2,907 SqFt  
Exterior: 1,048 SqFt  
Total: 3,955 SqFt

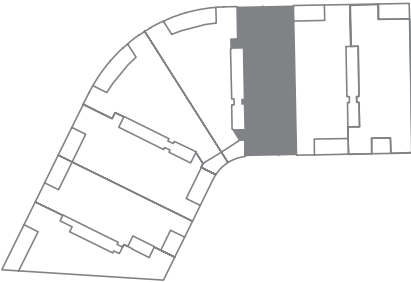
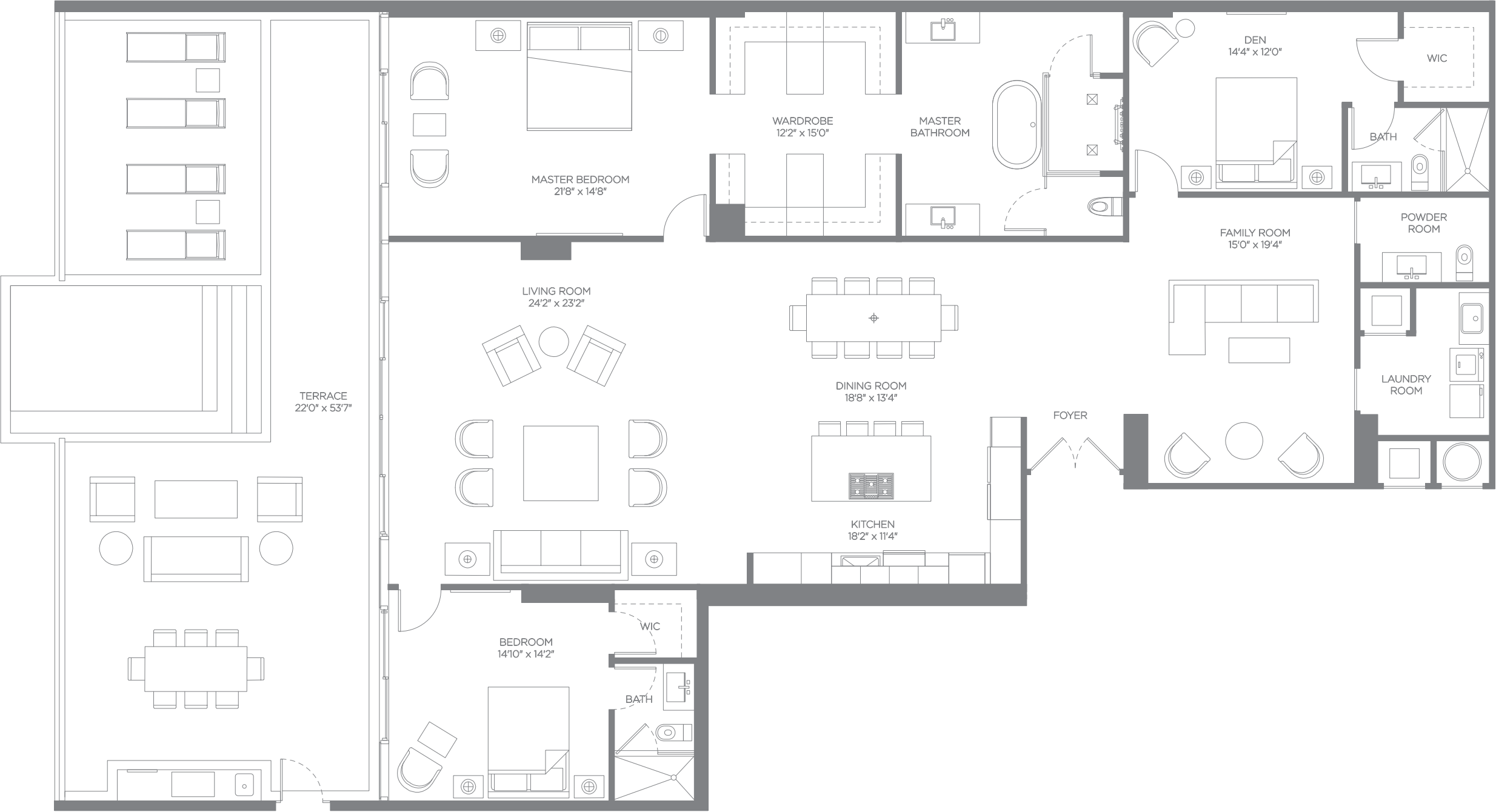
All depictions of matters of detail shown hereon, including, without limitation, items of finish, furniture and decoration, are conceptual only and are not necessarily included in the Unit. Furnishings are only included if and to the extent provided in your purchase agreement. Stated square footages and dimensions shown hereon are approximate and are measured to the exterior face of exterior walls and to the center line of demising walls. This method of measurement varies from, and is larger than, the dimensions that would be determined by using the description and definition of the "Unit" set forth in the Declaration (which generally only includes the interior airspace between the perimeter walls and excludes interior structural components). For your reference, the area of the Unit, determined in accordance with these defined unit boundaries, is referenced on Exhibit "3" to the Declaration included in the Prospectus. Note that measurements of rooms set forth on this floor plan are generally taken at the greatest points of each given room (as if the room were a perfect rectangle), without regard for any cutouts. Accordingly, the area of the actual room will typically be smaller than the product obtained by multiplying the stated length times width. All dimensions are approximate and may vary with actual construction, and all floor plans, specifications and other development plans are subject to change and will not necessarily accurately reflect the final plans and specifications for the development. 

# BOCA BEACH HOUSE

RESIDENCE C — LANAI

# RESIDENCE C

## LANAI




### DESCRIPTION

Bedrooms: 2  
Bathrooms: 3.5  
Dens: 2

### SIZE

Interior: 3,126 SqFt  
Exterior: 1,236 SqFt  
Total: 4,362 SqFt

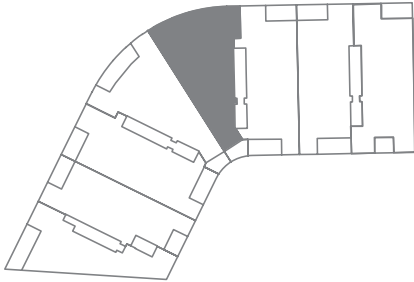
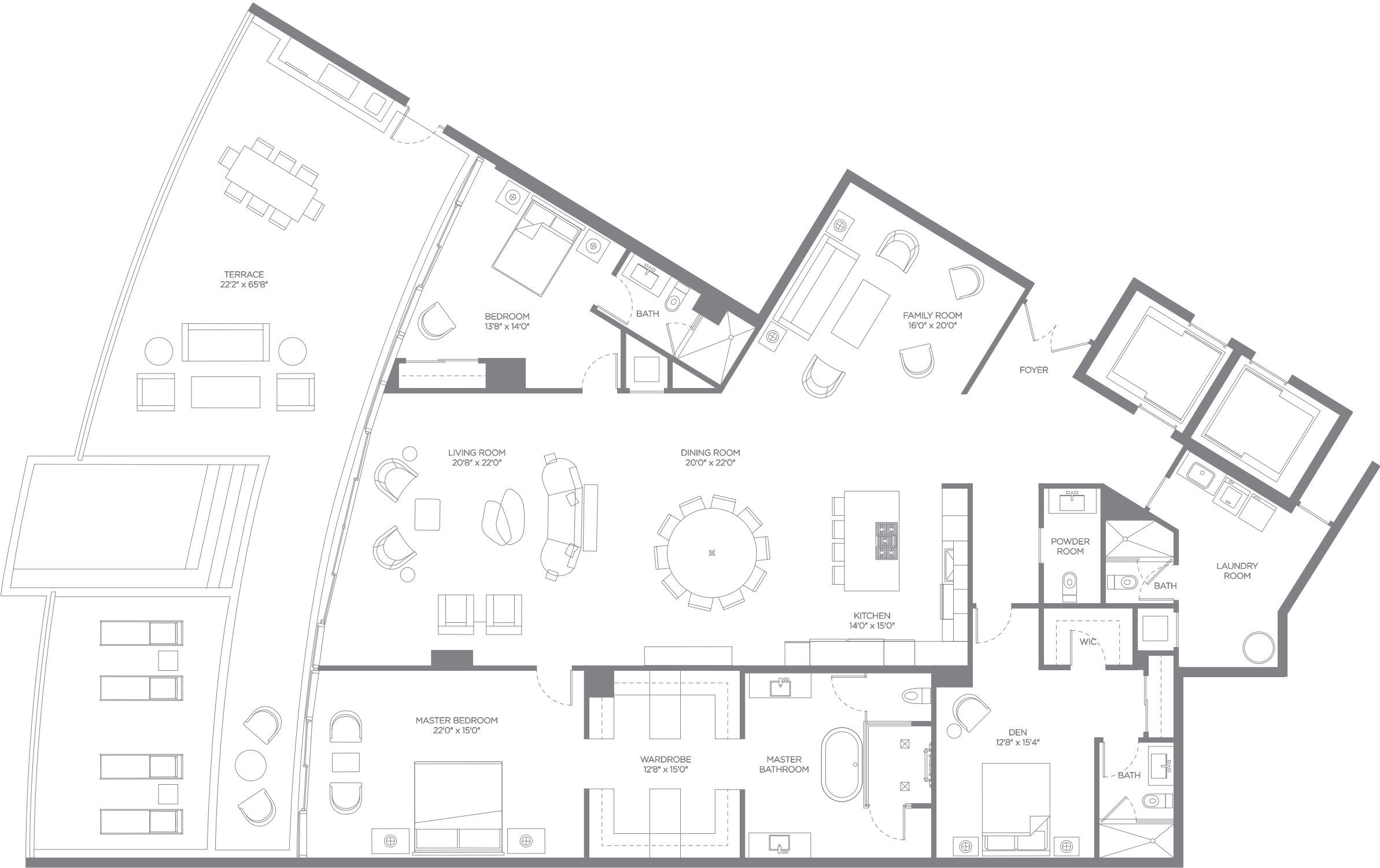
All depictions of matters of detail shown hereon, including, without limitation, items of finish, furniture and decoration, are conceptual only and are not necessarily included in the Unit. Furnishings are only included if and to the extent provided in your purchase agreement. Stated square footages and dimensions shown hereon are approximate and are measured to the exterior face of exterior walls and to the center line of demising walls. This method of measurement varies from, and is larger than, the dimensions that would be determined by using the description and definition of the "Unit" set forth in the Declaration (which generally only includes the interior airspace between the perimeter walls and excludes interior structural components). For your reference, the area of the Unit, determined in accordance with these defined unit boundaries, is referenced on Exhibit "3" to the Declaration included in the Prospectus. Note that measurements of rooms set forth on this floor plan are generally taken at the greatest points of each given room (as if the room were a perfect rectangle), without regard for any cutouts. Accordingly, the area of the actual room will typically be smaller than the product obtained by multiplying the stated length times width. All dimensions are approximate and may vary with actual construction, and all floor plans, specifications and other development plans are subject to change and will not necessarily accurately reflect the final plans and specifications for the development. 

# BOCA BEACH HOUSE

RESIDENCE D — LANAI

# RESIDENCE D

## LANAI




### DESCRIPTION

Bedrooms: 2  
Bathrooms: 4.5  
Dens: 2

### SIZE

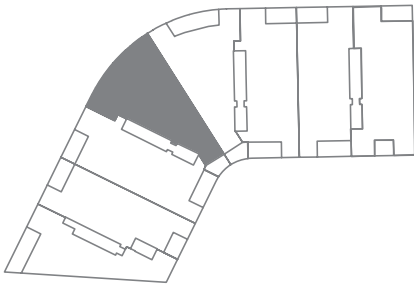
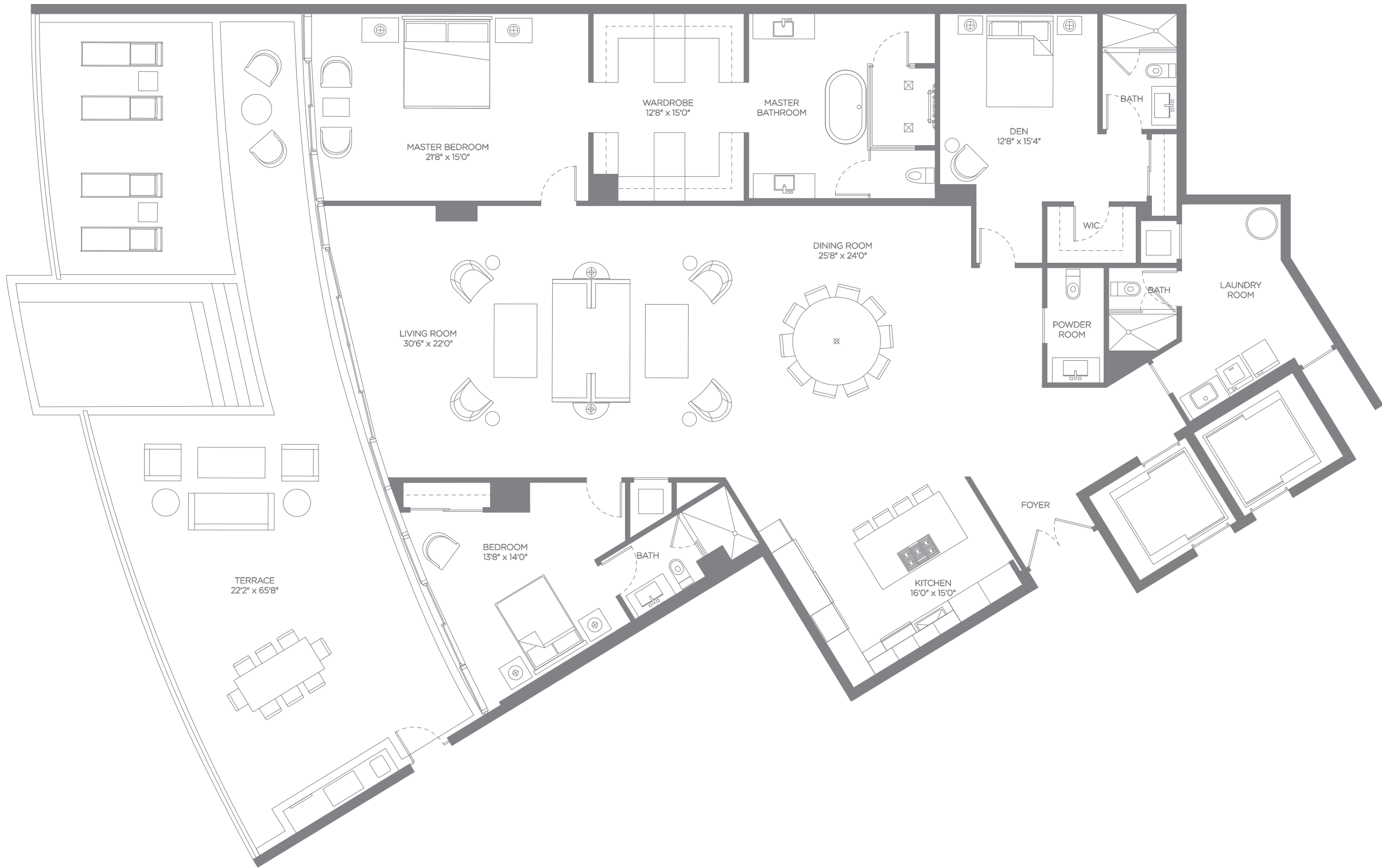
Interior: 3,550 SqFt  
Exterior: 1,485 SqFt  
Total: 5,035 SqFt

All depictions of matters of detail shown hereon, including, without limitation, items of finish, furniture and decoration, are conceptual only and are not necessarily included in the Unit. Furnishings are only included if and to the extent provided in your purchase agreement. Stated square footages and dimensions shown hereon are approximate and are measured to the exterior face of exterior walls and to the center line of demising walls. This method of measurement varies from, and is larger than, the dimensions that would be determined by using the description and definition of the "Unit" set forth in the Declaration (which generally only includes the interior airspace between the perimeter walls and excludes interior structural components). For your reference, the area of the Unit, determined in accordance with these defined unit boundaries, is referenced on Exhibit "3" to the Declaration included in the Prospectus. Note that measurements of rooms set forth on this floor plan are generally taken at the greatest points of each given room (as if the room were a perfect rectangle), without regard for any cutouts. Accordingly, the area of the actual room will typically be smaller than the product obtained by multiplying the stated length times width. All dimensions are approximate and may vary with actual construction, and all floor plans, specifications and other development plans are subject to change and will not necessarily accurately reflect the final plans and specifications for the development. 

# BOCA BEACH HOUSE

RESIDENCE Dr — LANAI

# RESIDENCE Dr LANAI




**DESCRIPTION**

Bedrooms: 2  
Bathrooms: 4.5  
Dens: 1

**SIZE**

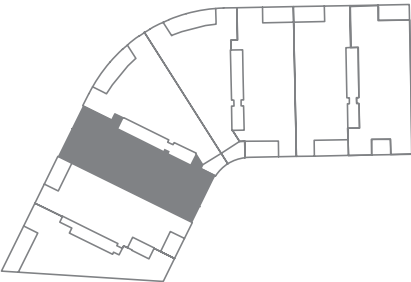
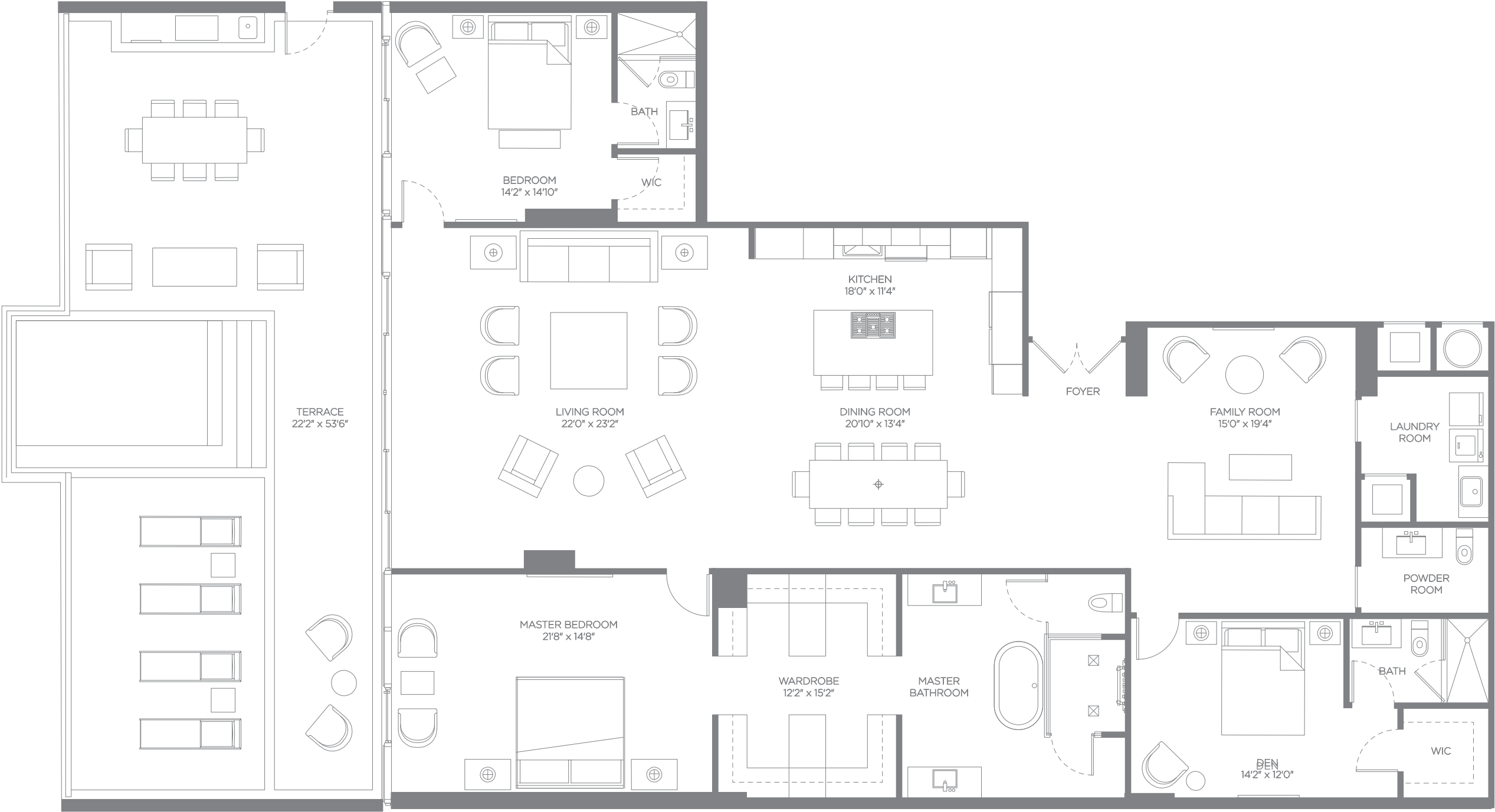
Interior: 3,550 SqFt  
Exterior: 1,485 SqFt  
Total: 5,035 SqFt

All depictions of matters of detail shown hereon, including, without limitation, items of finish, furniture and decoration, are conceptual only and are not necessarily included in the Unit. Furnishings are only included if and to the extent provided in your purchase agreement. Stated square footages and dimensions shown hereon are approximate and are measured to the exterior face of exterior walls and to the center line of demising walls. This method of measurement varies from, and is larger than, the dimensions that would be determined by using the description and definition of the "Unit" set forth in the Declaration (which generally only includes the interior airspace between the perimeter walls and excludes interior structural components). For your reference, the area of the Unit, determined in accordance with these defined unit boundaries, is referenced on Exhibit "3" to the Declaration included in the Prospectus. Note that measurements of rooms set forth on this floor plan are generally taken at the greatest points of each given room (as if the room were a perfect rectangle), without regard for any cutouts. Accordingly, the area of the actual room will typically be smaller than the product obtained by multiplying the stated length times width. All dimensions are approximate and may vary with actual construction, and all floor plans, specifications and other development plans are subject to change and will not necessarily accurately reflect the final plans and specifications for the development. 

BOCA  
BEACH  
HOUSE

RESIDENCE E — LANAI

# RESIDENCE E LANAI




## DESCRIPTION

Bedrooms: 2  
Bathrooms: 3.5  
Dens: 2

## SIZE

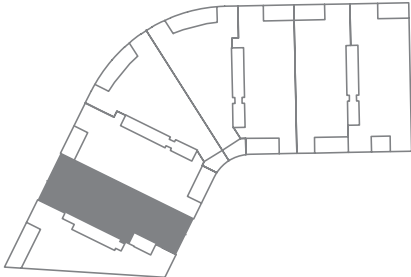
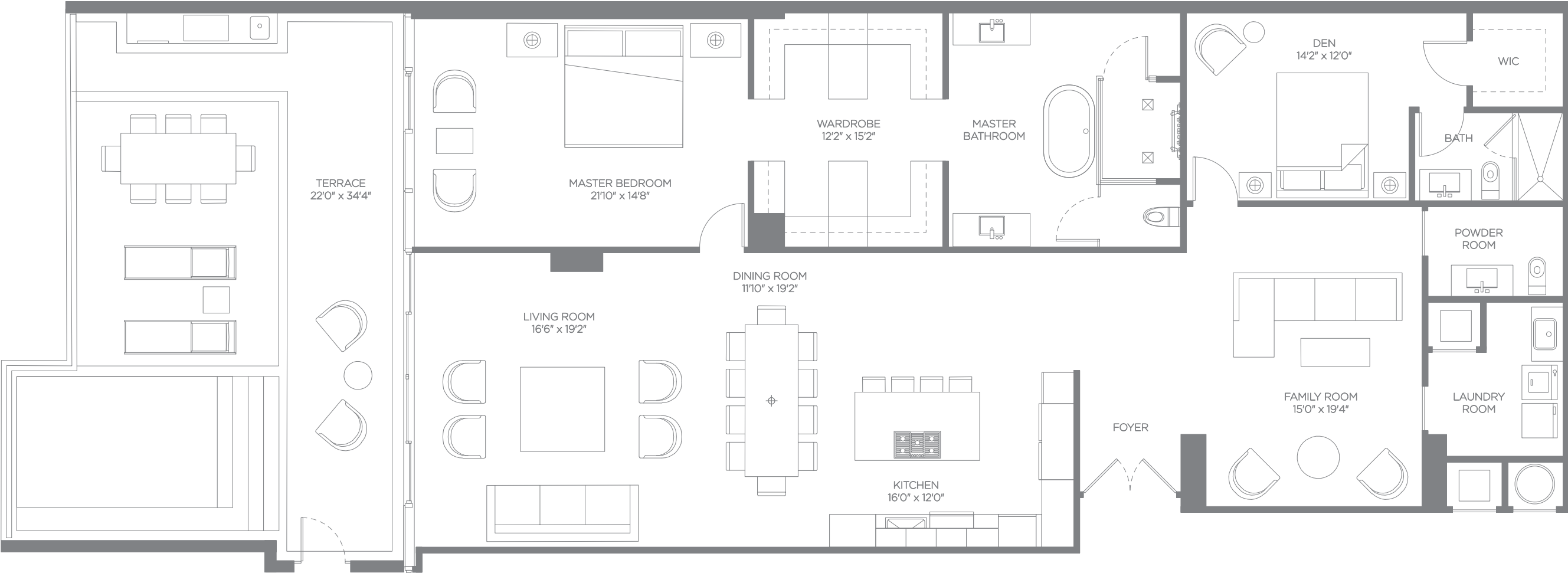
Interior: 3,128 SqFt  
Exterior: 1,224 SqFt  
Total: 4,352 SqFt

All depictions of matters of detail shown hereon, including, without limitation, items of finish, furniture and decoration, are conceptual only and are not necessarily included in the Unit. Furnishings are only included if and to the extent provided in your purchase agreement. Stated square footages and dimensions shown hereon are approximate and are measured to the exterior face of exterior walls and to the center line of demising walls. This method of measurement varies from, and is larger than, the dimensions that would be determined by using the description and definition of the "Unit" set forth in the Declaration (which generally only includes the interior airspace between the perimeter walls and excludes interior structural components). For your reference, the area of the Unit, determined in accordance with these defined unit boundaries, is referenced on Exhibit "3" to the Declaration included in the Prospectus. Note that measurements of rooms set forth on this floor plan are generally taken at the greatest points of each given room (as if the room were a perfect rectangle), without regard for any cutouts. Accordingly, the area of the actual room will typically be smaller than the product obtained by multiplying the stated length times width. All dimensions are approximate and may vary with actual construction, and all floor plans, specifications and other development plans are subject to change and will not necessarily accurately reflect the final plans and specifications for the development. 

BOCA  
BEACH  
HOUSE

RESIDENCE F — LANAI

# RESIDENCE F LANAI



**DESCRIPTION**

Bedrooms: 1  
Bathrooms: 2.5  
Dens: 2

**SIZE**

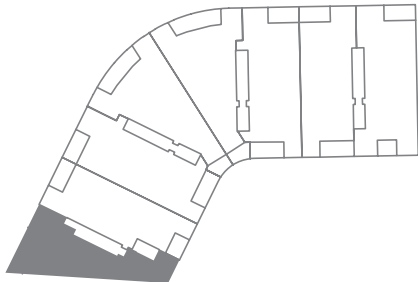
Interior: 2,582 SqFt  
Exterior: 806 SqFt  
Total: 3,388 SqFt

All depictions of matters of detail shown hereon, including, without limitation, items of finish, furniture and decoration, are conceptual only and are not necessarily included in the Unit. Furnishings are only included if and to the extent provided in your purchase agreement. Stated square footages and dimensions shown hereon are approximate and are measured to the exterior face of exterior walls and to the center line of demising walls. This method of measurement varies from, and is larger than, the dimensions that would be determined by using the description and definition of the "Unit" set forth in the Declaration (which generally only includes the interior airspace between the perimeter walls and excludes interior structural components). For your reference, the area of the Unit, determined in accordance with these defined unit boundaries, is referenced on Exhibit "3" to the Declaration included in the Prospectus. Note that measurements of rooms set forth on this floor plan are generally taken at the greatest points of each given room (as if the room were a perfect rectangle), without regard for any cutouts. Accordingly, the area of the actual room will typically be smaller than the product obtained by multiplying the stated length times width. All dimensions are approximate and may vary with actual construction, and all floor plans, specifications and other development plans are subject to change and will not necessarily accurately reflect the final plans and specifications for the development.

BOCA  
BEACH  
HOUSE

RESIDENCE G — LANAI

# RESIDENCE G LANAI



## DESCRIPTION

Bedrooms: 3  
Bathrooms: 3.5  
Dens: 1

## SIZE

Interior: 3,801 SqFt  
Exterior: 1,253 SqFt  
Total: 5,054 SqFt

All depictions of matters of detail shown hereon, including, without limitation, items of finish, furniture and decoration, are conceptual only and are not necessarily included in the Unit. Furnishings are only included if and to the extent provided in your purchase agreement. Stated square footages and dimensions shown hereon are approximate and are measured to the exterior face of exterior walls and to the center line of demising walls. This method of measurement varies from, and is larger than, the dimensions that would be determined by using the description and definition of the "Unit" set forth in the Declaration (which generally only includes the interior airspace between the perimeter walls and excludes interior structural components). For your reference, the area of the Unit, determined in accordance with these defined unit boundaries, is referenced on Exhibit "3" to the Declaration included in the Prospectus. Note that measurements of rooms set forth on this floor plan are generally taken at the greatest points of each given room (as if the room were a perfect rectangle), without regard for any cutouts. Accordingly, the area of the actual room will typically be smaller than the product obtained by multiplying the stated length times width. All dimensions are approximate and may vary with actual construction, and all floor plans, specifications and other development plans are subject to change and will not necessarily accurately reflect the final plans and specifications for the development. 