

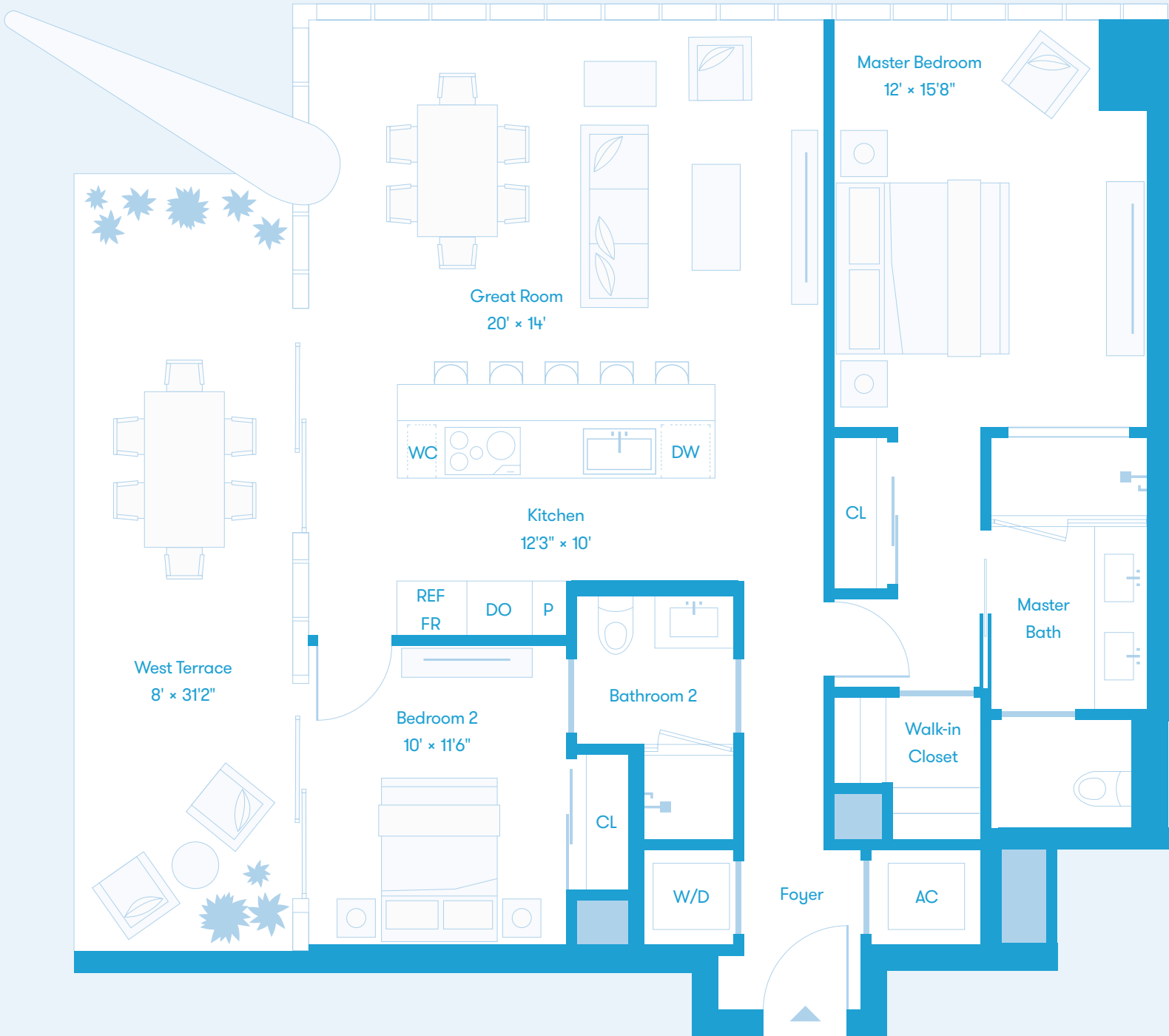
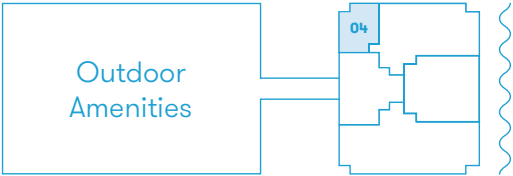




Biscayne Bay

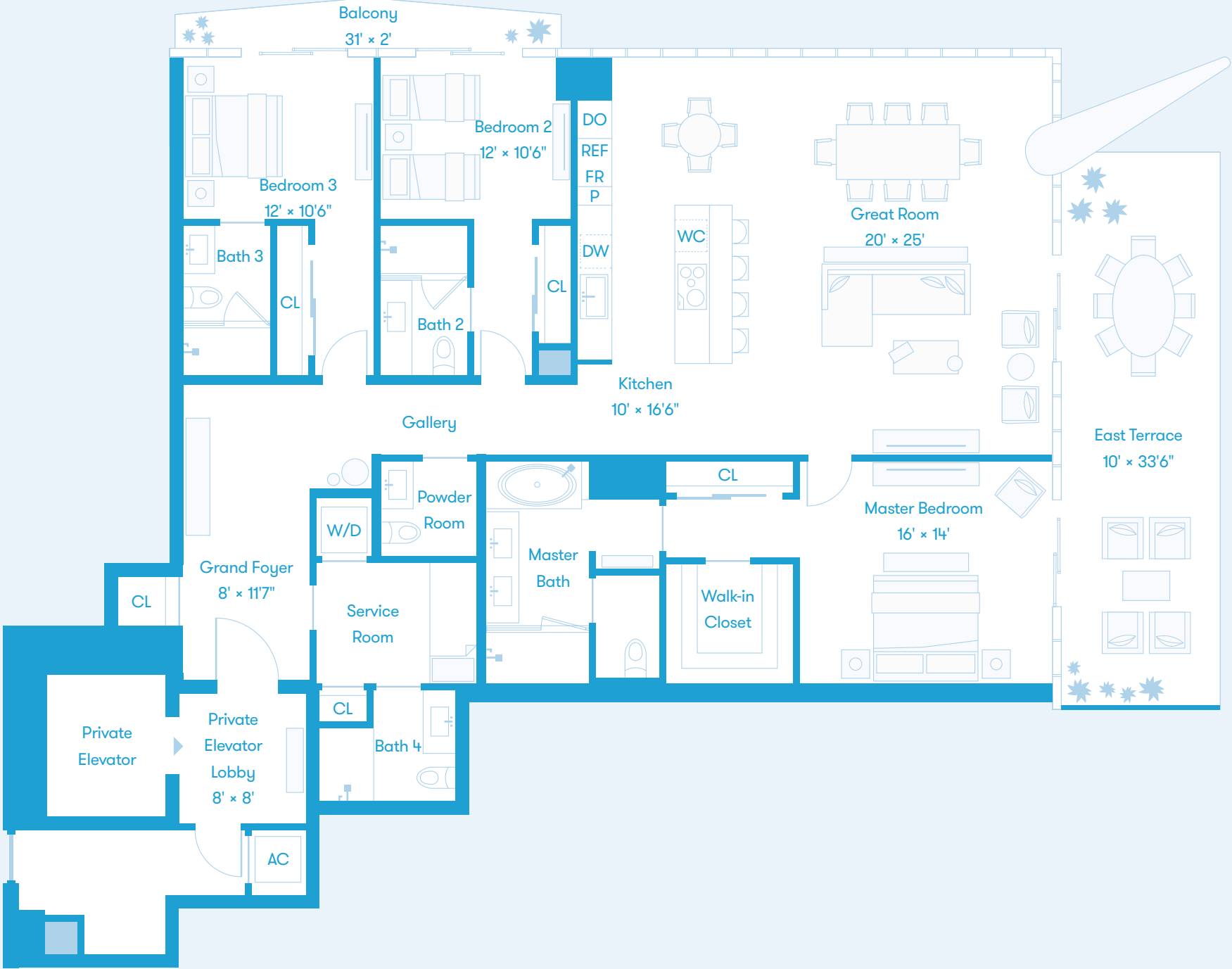
* On level 38, Bath 2 & 4 have slightly modified configurations, affecting the width of Bedrooms 2 & 4.



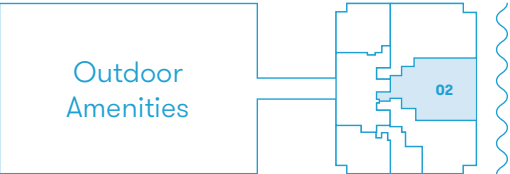




* Level 8 has a larger exterior 446 Sq Ft / 41 Sq M.



Biscayne Bay



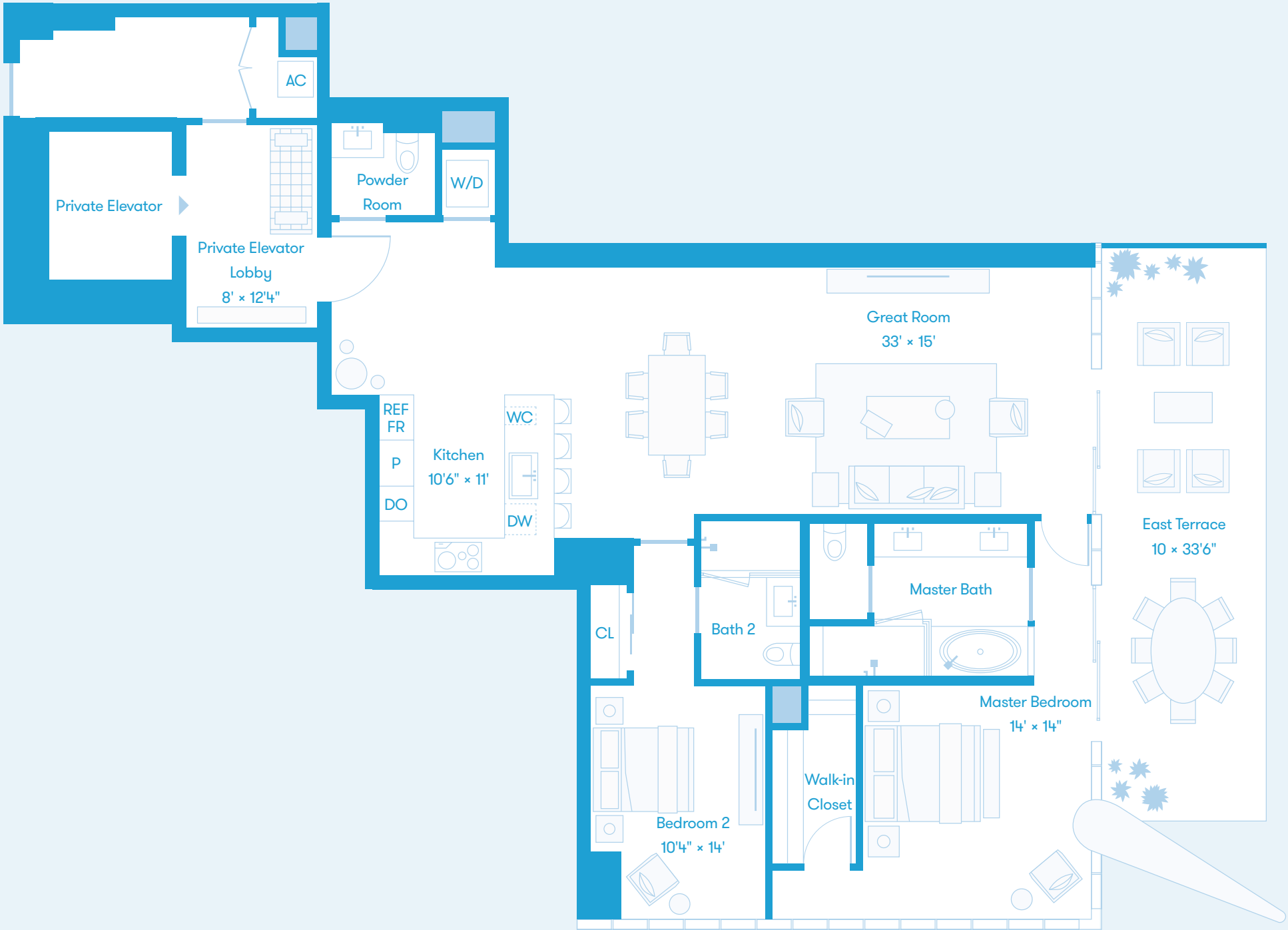
* On level 8 & 9 the column in bedroom 2 is slightly larger.
Level 8 has a larger exterior 518 Sq Ft / 48 Sq M.



Biscayne Bay

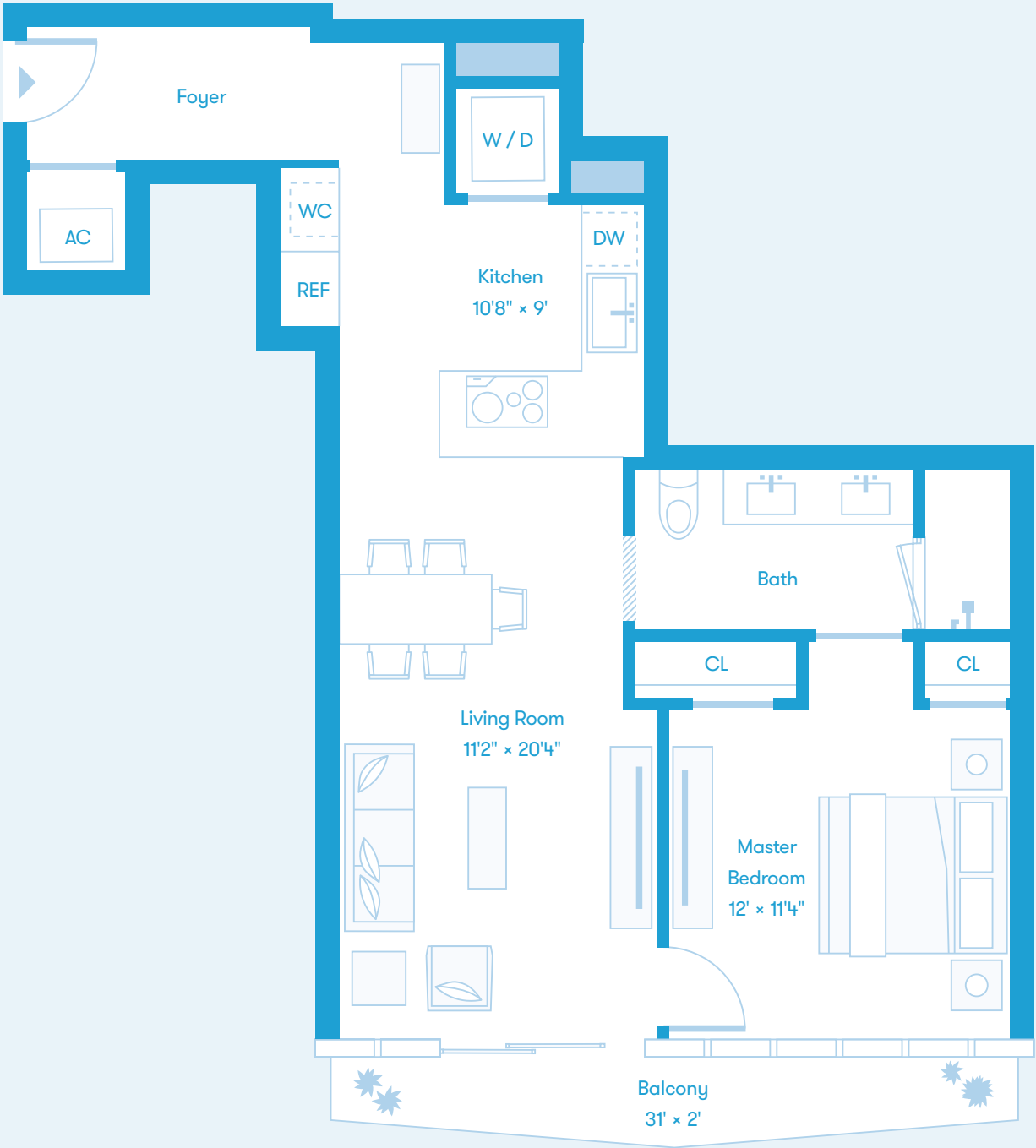


* Level 8 has a larger exterior 386 Sq Ft / 36 Sq M.

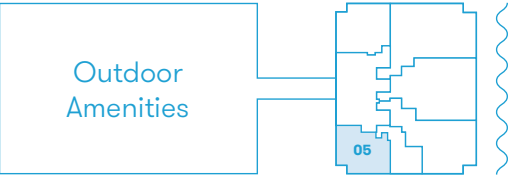




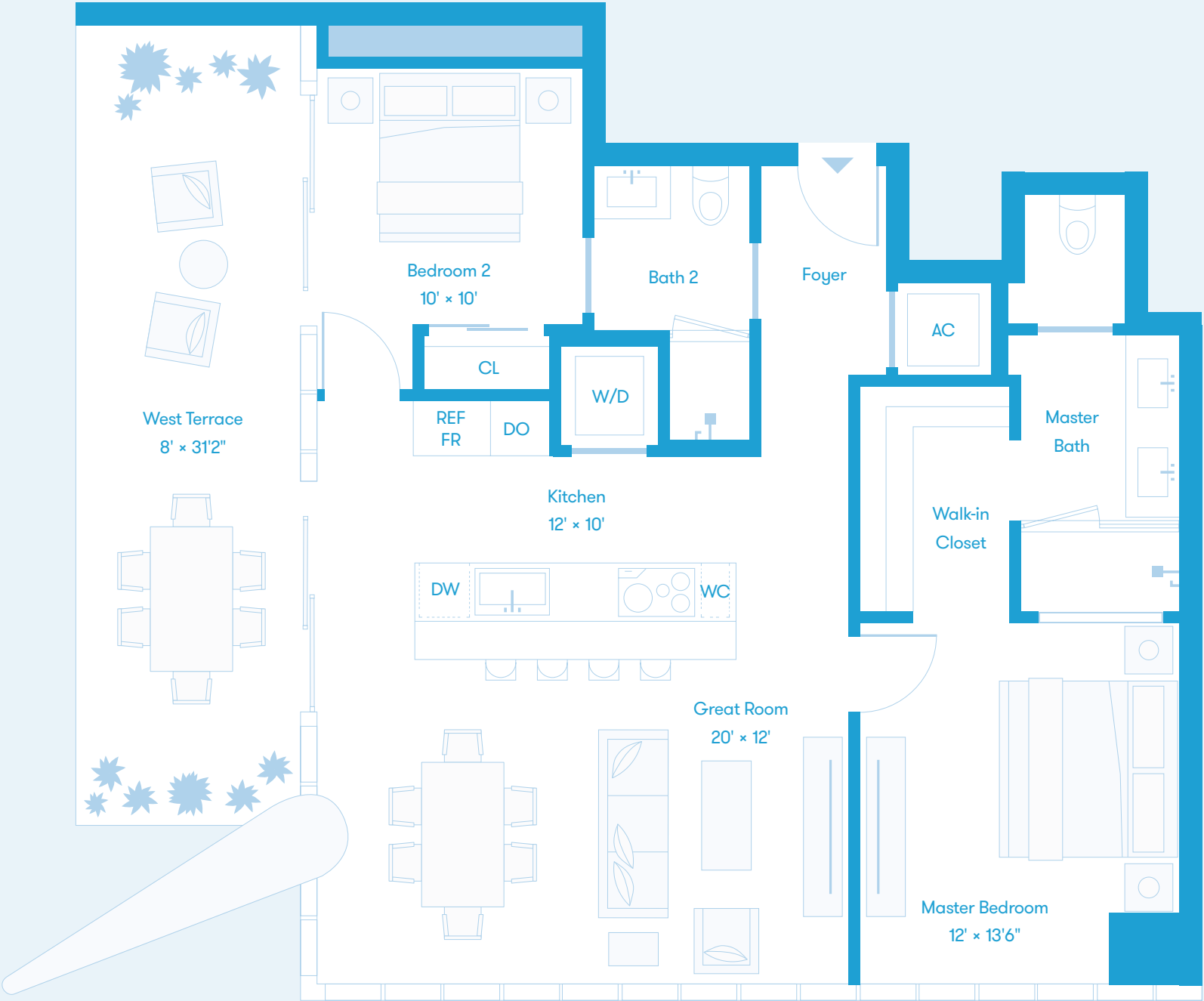
* Optional swing door to bathroom available.



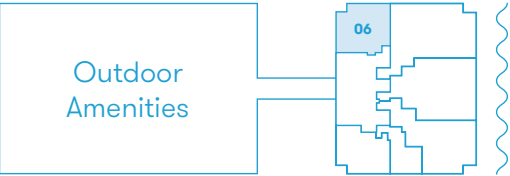
Biscayne Bay



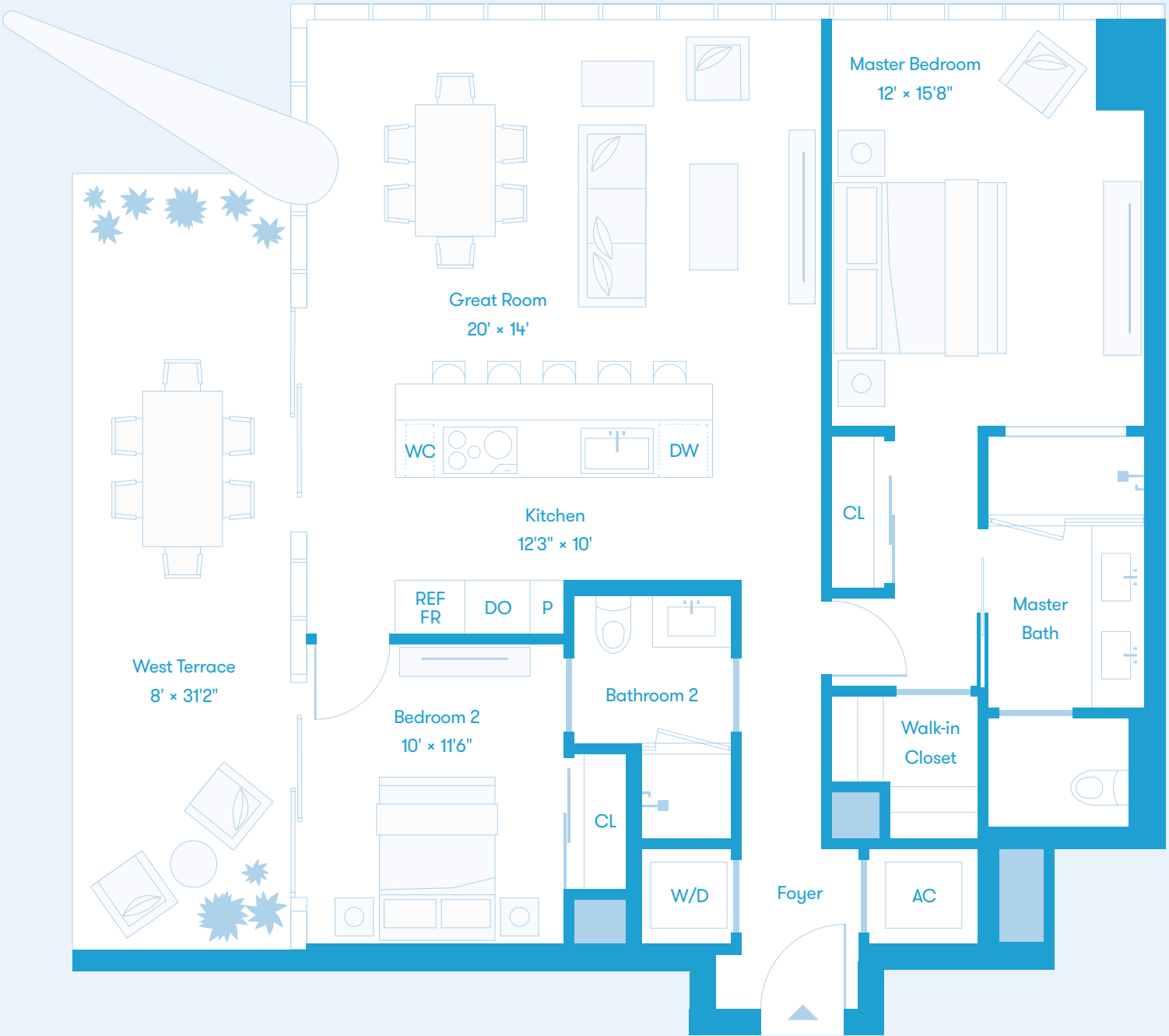
* Level 8 has an extended balcony totaling 1,312 Sq Ft / 122 Sq M.



Biscayne Bay



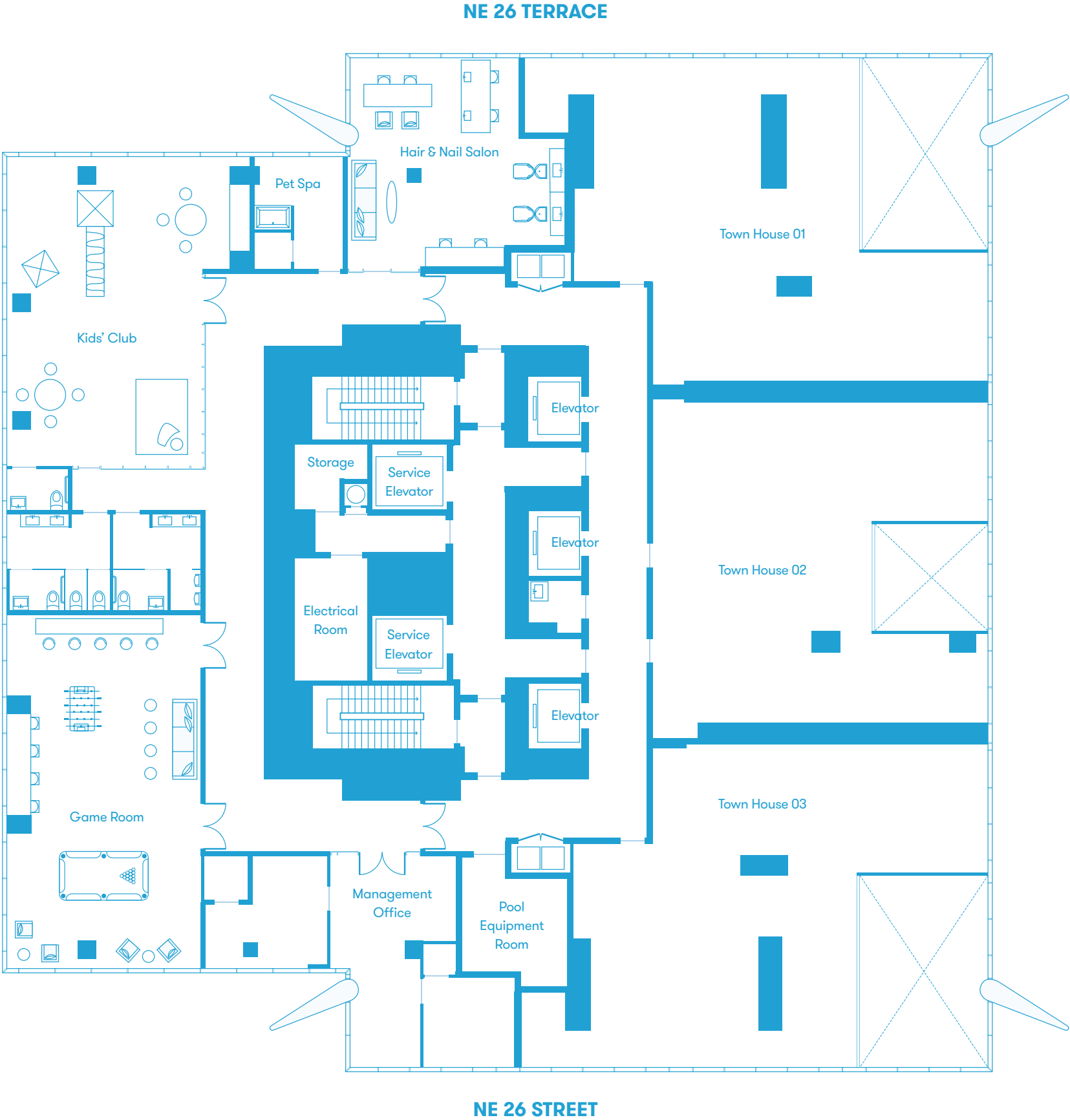
* Level 8 has an extended balcony totaling 1,312 Sq Ft / 122 Sq M.



Biscayne Bay

FIFTH-FLOOR BUILDING AMENITIES

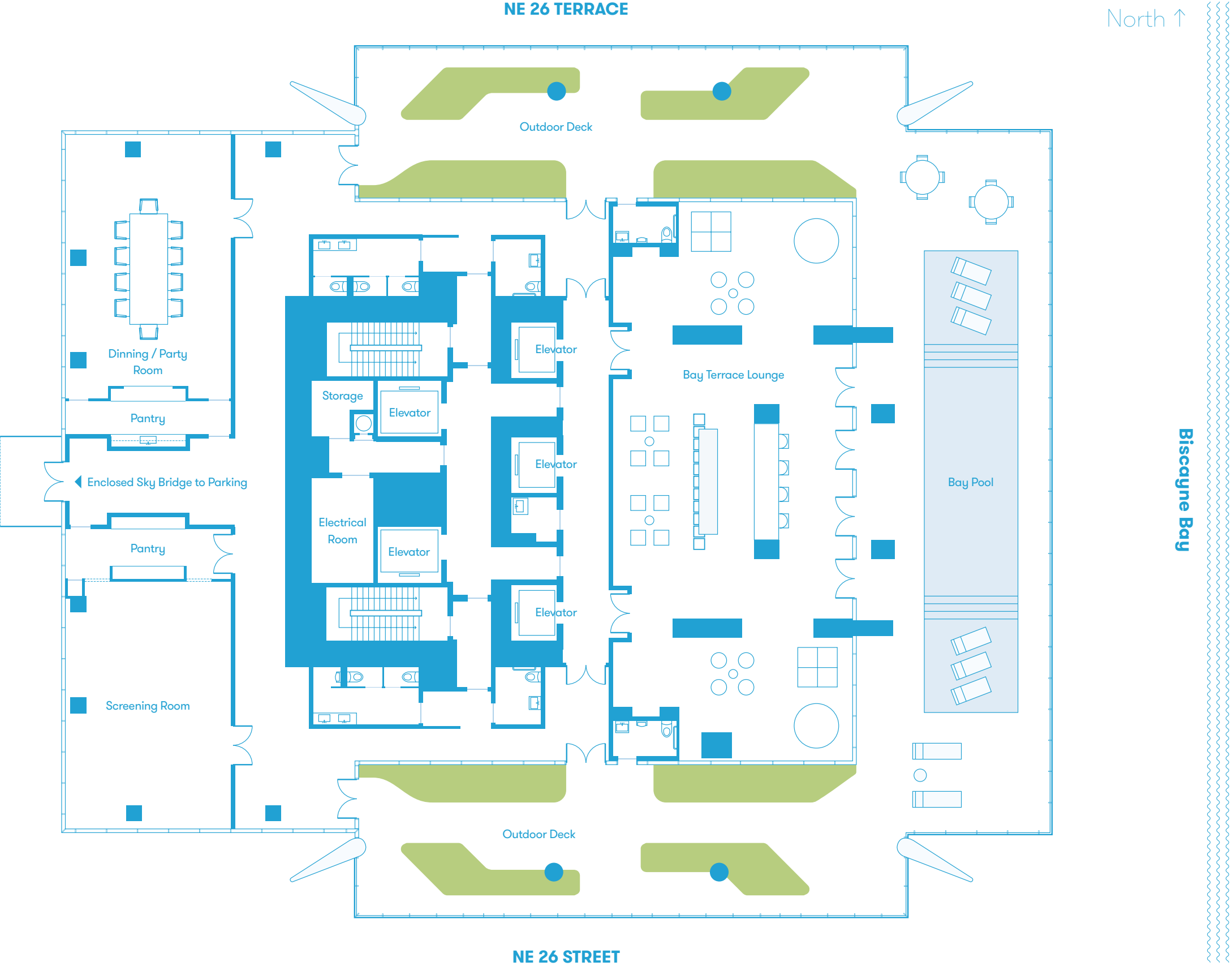
- Hair and nail salon
- Kids’ club and indoor play-area
- Pet spa
- Resident game room with billiard table, bar, large video screen and lounge seating

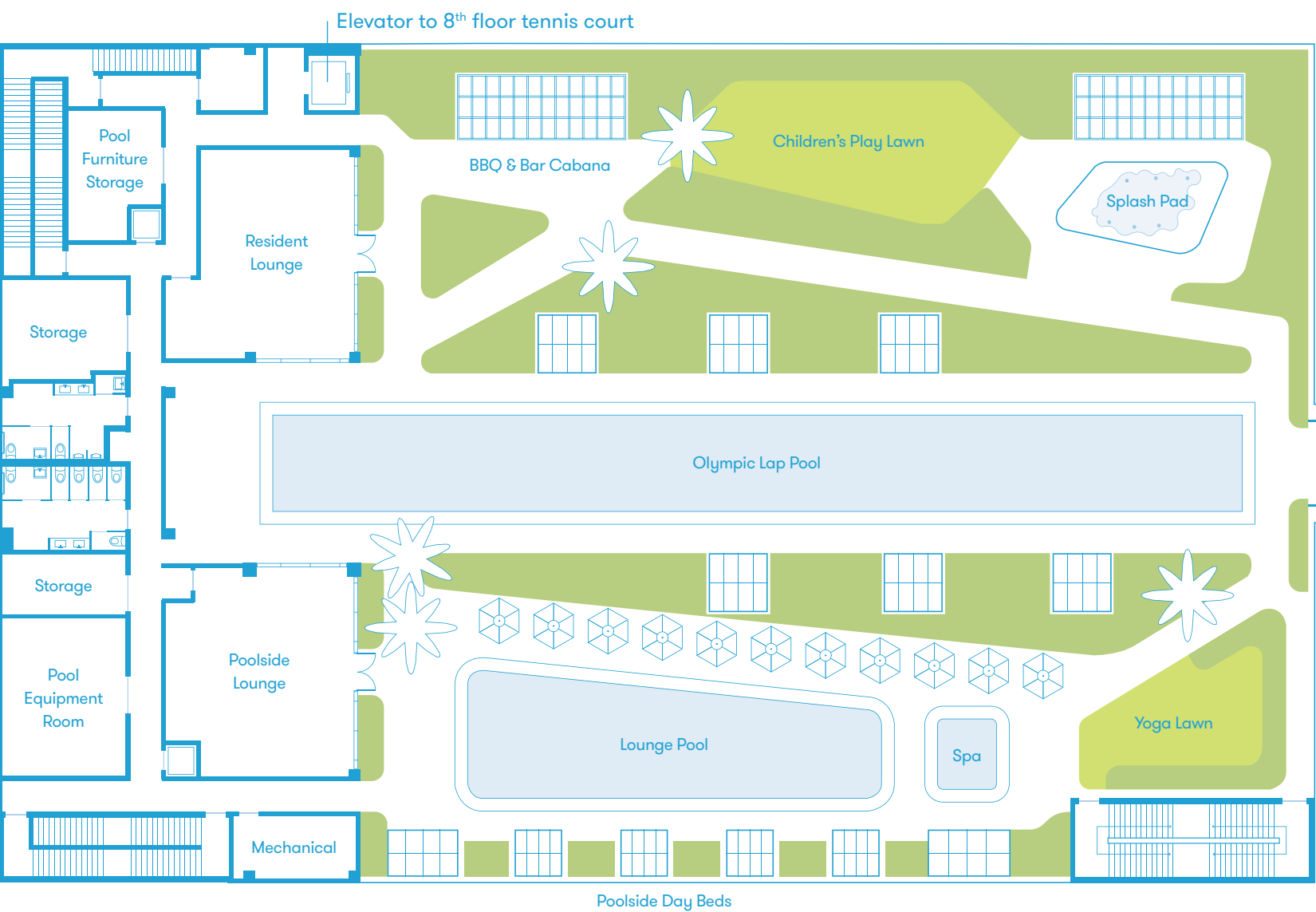


All depictions of matters of detail shown hereon, including, without limitation, items of finish, furniture and decoration, are conceptual only and are not necessarily included in the Unit. For a correct representation of the items included in the Unit, see the Purchase Agreement. Stated dimensions shown hereon are approximate and are measured to the exterior face of exterior walls and to the center line of demising walls. This method of measurement varies from, and is larger than, the dimensions that would be determined by using the description and definition of the "Unit" set forth in the Declaration (which generally only includes the interior airspace between the perimeter walls and excludes interior structural components). Note that measurements of rooms set forth on this floor plan are generally taken at the greatest points of each given room (as if the room were a perfect rectangle), without regard for any cutouts. Accordingly, the area of the actual room will typically be smaller than the product obtained by multiplying the stated length times width. All dimensions are approximate and may vary with actual construction.

SIXTH-FLOOR BUILDING AMENITIES

- Expansive outdoor deck with multiple lounge-seating areas
- Bayside terrace with cantilevered pool overlooking the bay
- Indoor bay-terrace lounge with double ceiling height
- Resident private dining and party room
- Private screening room





NE 26 TERRACE

North ↑



Biscayne Bay

NE 26 STREET

SEVENTH-FLOOR BUILDING AMENITIES

- 1,700 square-foot fitness center with 180° views of the bay
 - Private yoga studio
 - Expansive residents’ only spa with men’s and women’s sauna and steam rooms, and private massage treatment rooms with showers
- Men’s and women’s locker rooms
 - Private training / Pilates room
 - Outdoor bridge connecting the seventh-floor building amenities to pool deck
 - Olympic-length lap pool
- Lounge pool
 - Outdoor whirlpool spa
 - Poolside daybeds
 - Elevated tennis court
 - Kids’ splash-pad water play area
- Children’s play lawn
 - Outdoor barbeque and bar cabana for al fresco dining
 - Two poolside resident lounges
 - Men’s and women’s private locker rooms