

SOUTH TOWER TIFFANY RESIDENCE

Selene
OCEANFRONT RESIDENCES
FORT LAUDERDALE

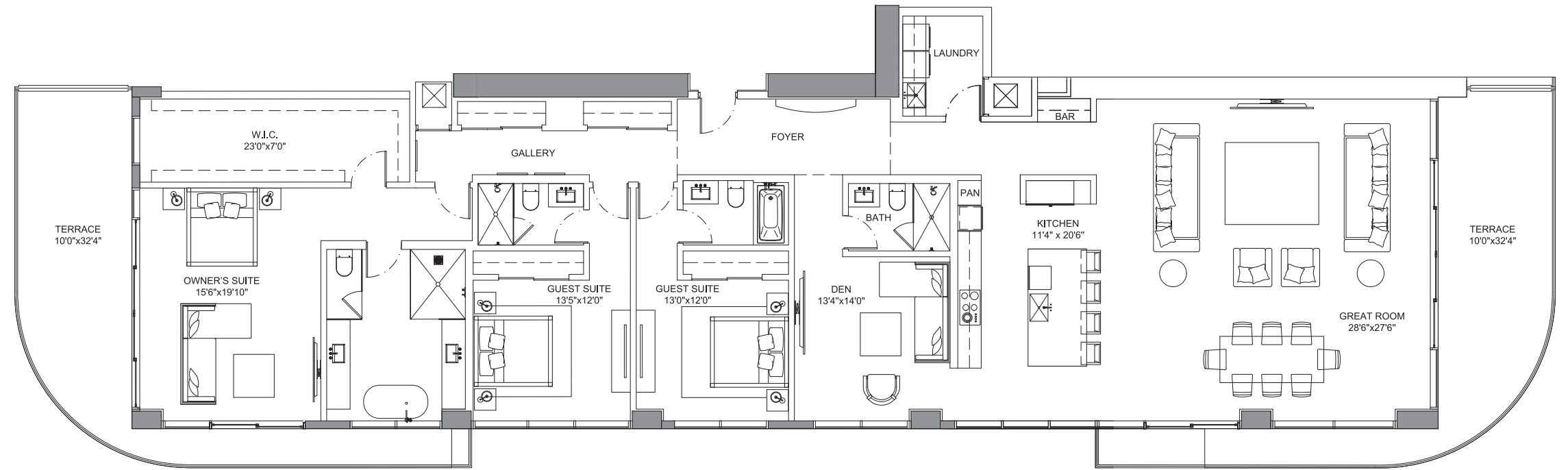
Specifications

3 Bedrooms | 4 Bathrooms | Den

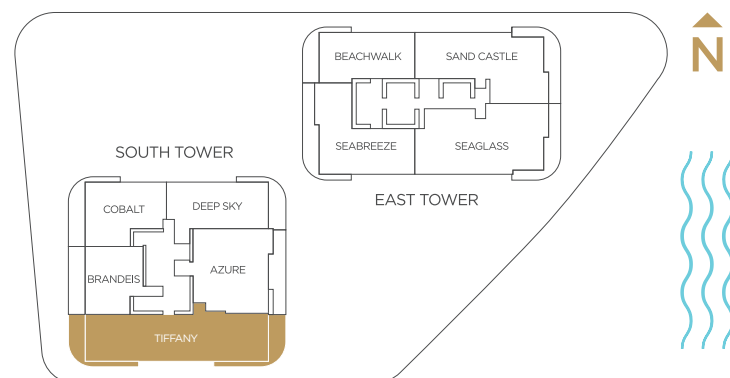
Interior 3,264 SQFT

Exterior 746 SQFT

Total Area 4,010 SQFT



*Preliminary Draft - Version 1



PRESENTED BY
KOLTER

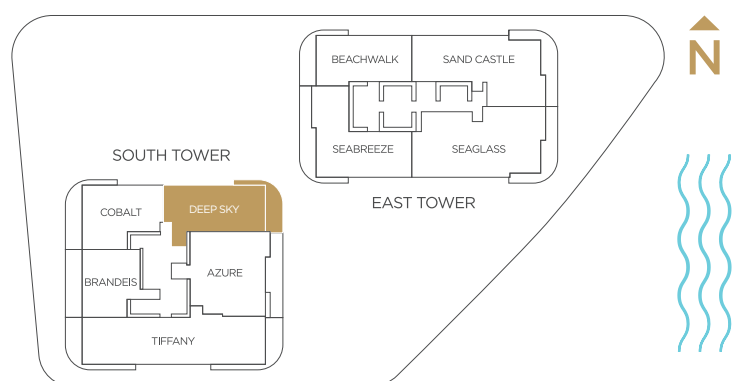
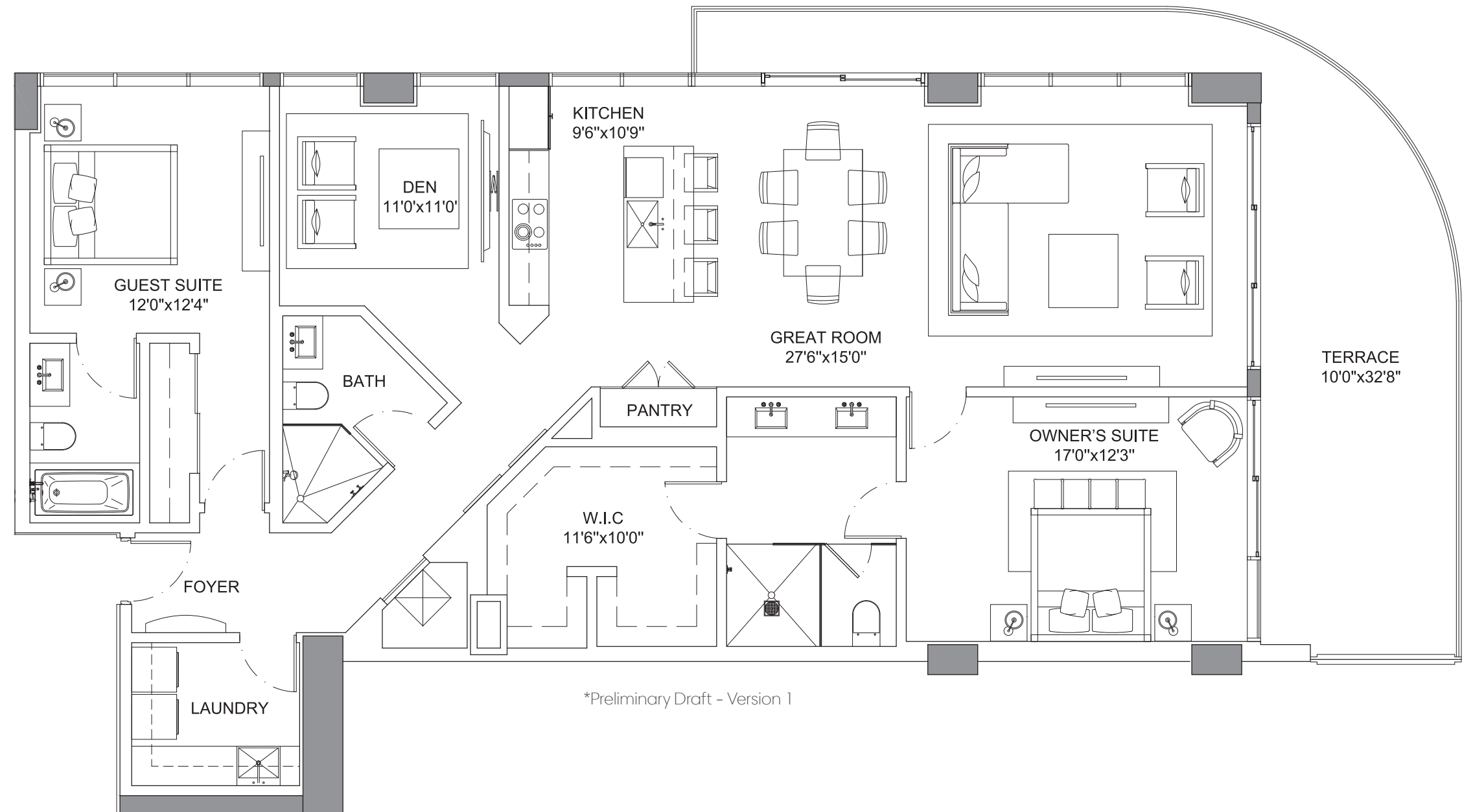
ORAL REPRESENTATIONS CANNOT BE RELIED UPON AS CORRECTLY STATING REPRESENTATIONS OF THE SELLER. FOR CORRECT REPRESENTATIONS, MAKE REFERENCE TO THIS BROCHURE AND TO THE DOCUMENTS REQUIRED BY SECTION 718.503, FLORIDA STATUTES. TO BE FURNISHED BY A SELLER TO A BUYER OR LESSEE. Prices, terms and availability are subject to change at any time without notice. All dimensions are approximate. The floorplan is subject to change without notice. The seller reserves the absolute right, in its sole judgement and discretion, to substitute appliances, materials, fixtures and equipment of equal or greater value for those specified. There are various methods of calculating the total square footage of a condominium unit, and depending on the method of calculation, the quoted square footage of a condominium unit may vary more than a normal amount. The total condominium square footages as shown in this brochure are based on the "Architectural Method" of measurement which measures the exterior perimeter of the condominium unit, and also includes interior columns and fifty percent of demising walls. The method for calculating residential square footage used in marketing materials is different than the method used for calculating residential square footage in the condominium documents. Please see the Declaration of Condominium for more information. The model shown includes options and upgrades that are not a part of a base residence pricing. © The Kolter Group, March, 2021.

SOUTH TOWER DEEP SKY RESIDENCE

Specifications

2 Bedrooms | 3 Bathrooms | Den

Interior	1,858 SQFT
Exterior	374 SQFT
Total Area	2,232 SQFT



ORAL REPRESENTATIONS CANNOT BE RELIED UPON AS CORRECTLY STATING REPRESENTATIONS OF THE SELLER. FOR CORRECT REPRESENTATIONS, MAKE REFERENCE TO THIS BROCHURE AND TO THE DOCUMENTS REQUIRED BY SECTION 718.503, FLORIDA STATUTES, TO BE FURNISHED BY A SELLER TO A BUYER OR LESSEE. Prices, terms and availability are subject to change at any time without notice. All dimensions are approximate. The floorplan is subject to change without notice. The seller reserves the absolute right, in its sole judgement and discretion, to substitute appliances, materials, fixtures and equipment of equal or greater value for those specified. There are various methods of calculating the total square footage of a condominium unit, and depending on the method of calculation, the quoted square footage of a condominium unit may vary more than a normal amount. The total condominium square footages as shown in this brochure are based on the "Architectural Method" of measurement which measures the exterior perimeter of the condominium unit, and also includes interior columns and fifty percent of demising walls. The method for calculating residential square footage used in marketing materials is different than the method used for calculating residential square footage in the condominium documents. Please see the Declaration of Condominium for more information. The model shown includes options and upgrades that are not a part of a base residence pricing. © The Kolter Group, March, 2021.

SOUTH TOWER COBALT RESIDENCE

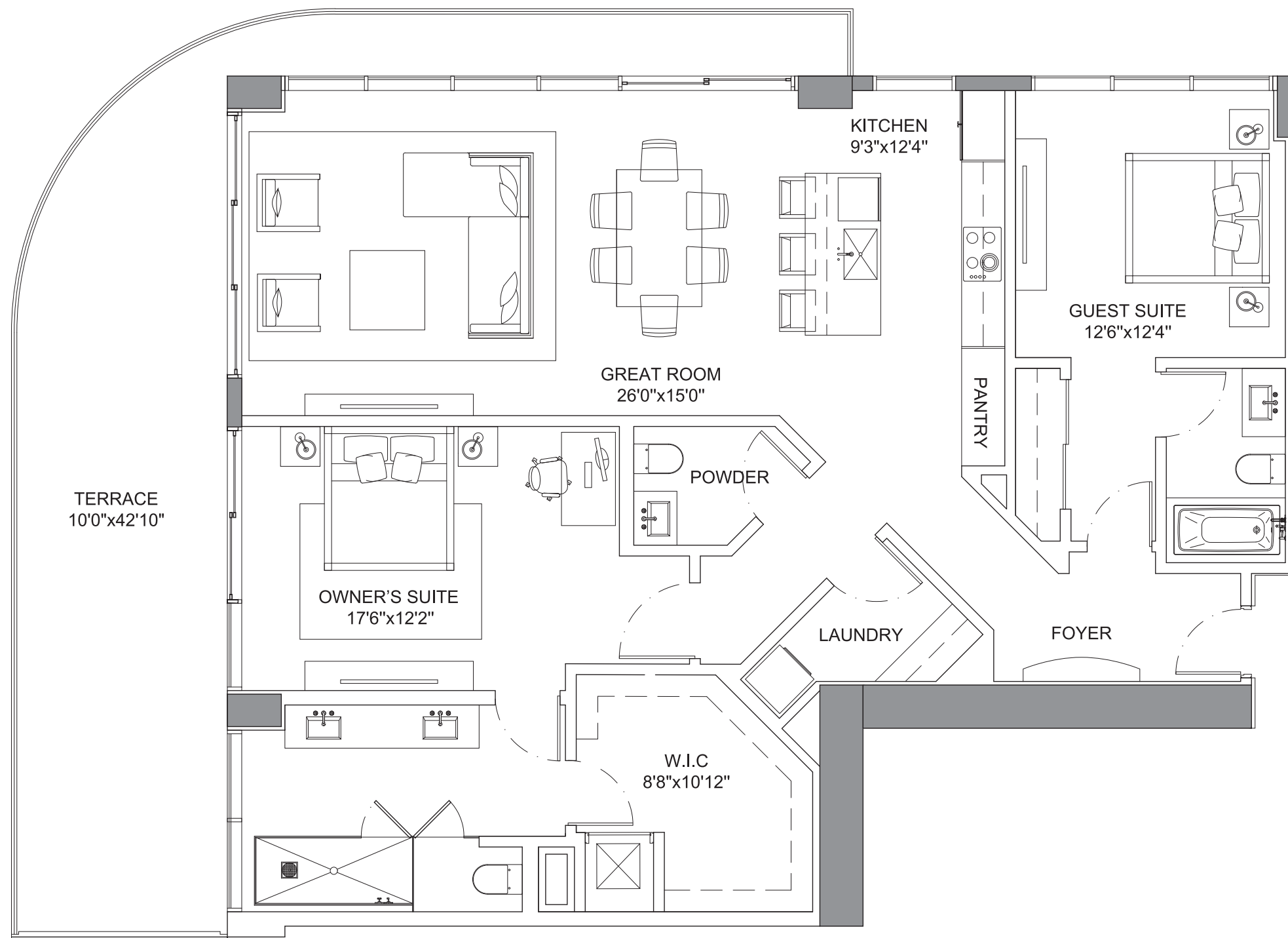
Selene

OCEANFRONT RESIDENCES
FORT LAUDERDALE

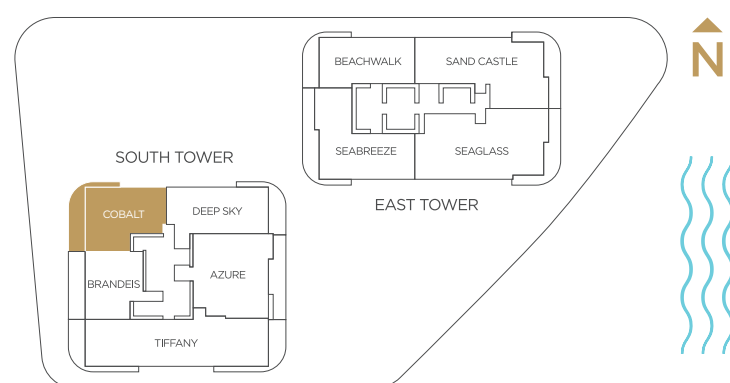
Specifications

2 Bedrooms | 2.5 Bathrooms

Interior	1,680 SQFT
Exterior	472 SQFT
Total Area	2,152 SQFT



*Preliminary Draft - Version 1



PRESENTED BY
KOLTER

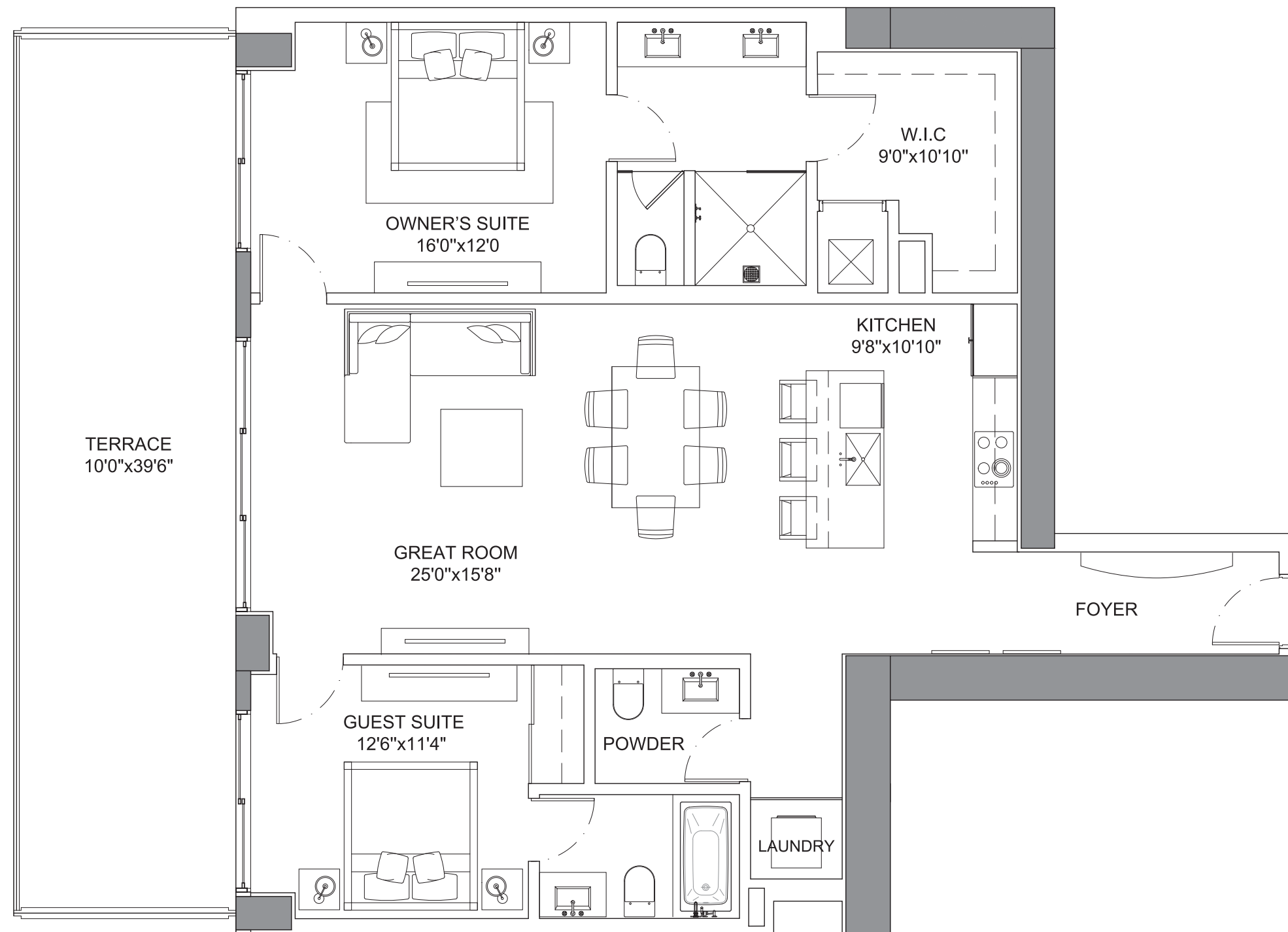
ORAL REPRESENTATIONS CANNOT BE RELIED UPON AS CORRECTLY STATING REPRESENTATIONS OF THE SELLER. FOR CORRECT REPRESENTATIONS, MAKE REFERENCE TO THIS BROCHURE AND TO THE DOCUMENTS REQUIRED BY SECTION 718.503, FLORIDA STATUTES. TO BE FURNISHED BY A SELLER TO A BUYER OR LESSEE. Prices, terms and availability are subject to change at any time without notice. All dimensions are approximate. The floorplan is subject to change without notice. The seller reserves the absolute right, in its sole judgement and discretion, to substitute appliances, materials, fixtures and equipment of equal or greater value for those specified. There are various methods of calculating the total square footage of a condominium unit, and depending on the method of calculation, the quoted square footage of a condominium unit may vary more than a normal amount. The total condominium square footages as shown in this brochure are based on the "Architectural Method" of measurement which measures the exterior perimeter of the condominium unit, and also includes interior columns and fifty percent of demising walls. The method for calculating residential square footage used in marketing materials is different than the method used for calculating residential square footage in the condominium documents. Please see the Declaration of Condominium for more information. The model shown includes options and upgrades that are not a part of a base residence pricing. © The Kolter Group, March, 2021.

SOUTH TOWER BRANDEIS RESIDENCE

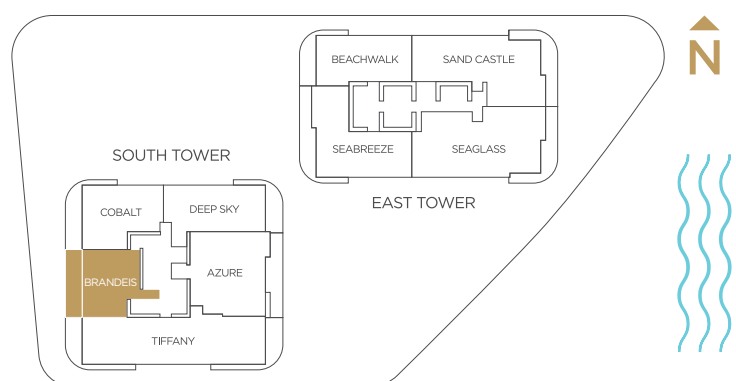
Specifications

2 Bedrooms | 2.5 Bathrooms

Interior	1,395 SQFT
Exterior	396 SQFT
Total Area	1,791 SQFT



*Preliminary Draft - Version 1



PRESENTED BY
KOLTER

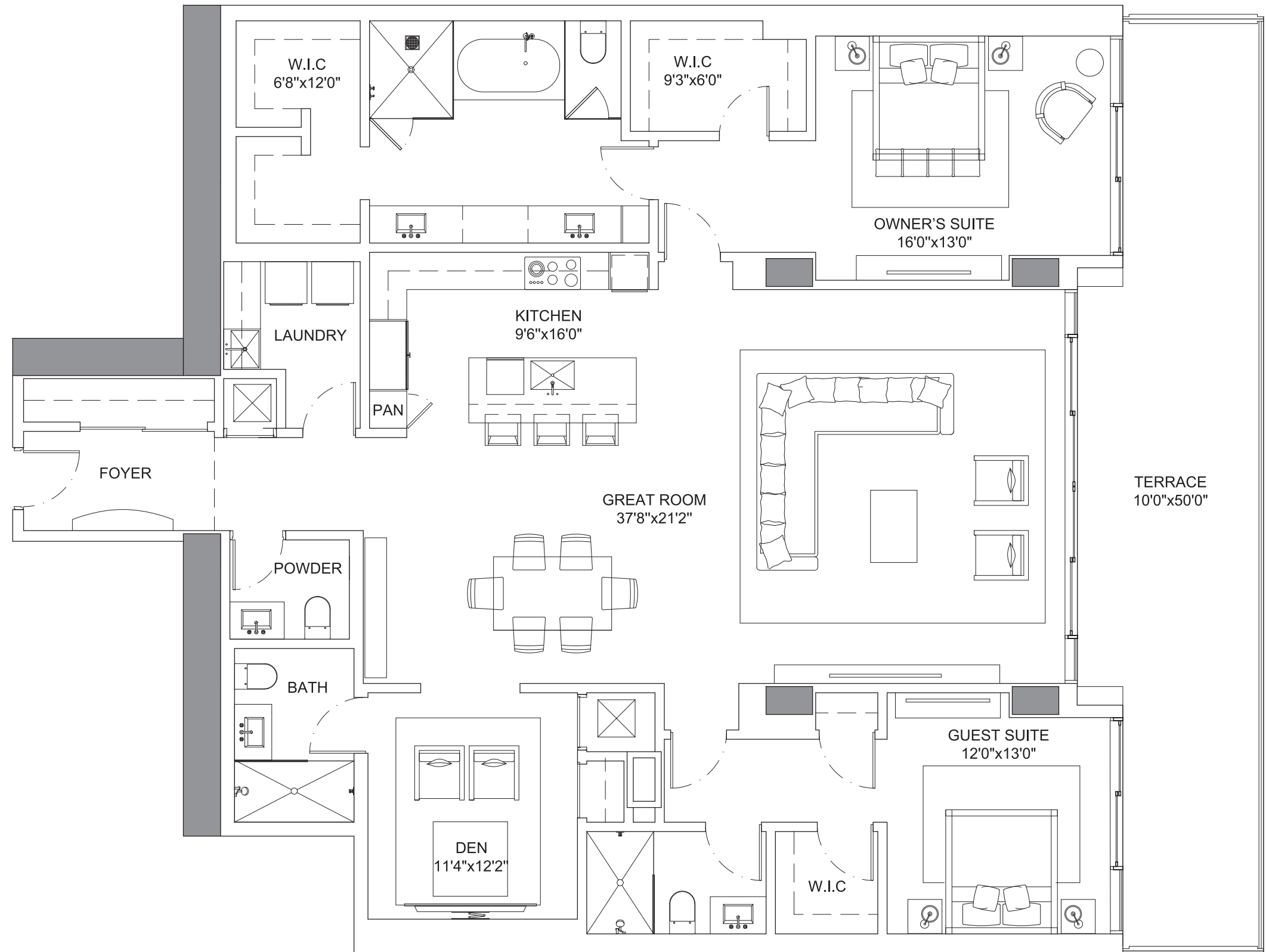
ORAL REPRESENTATIONS CANNOT BE RELIED UPON AS CORRECTLY STATING REPRESENTATIONS OF THE SELLER. FOR CORRECT REPRESENTATIONS, MAKE REFERENCE TO THIS BROCHURE AND TO THE DOCUMENTS REQUIRED BY SECTION 718.503, FLORIDA STATUTES. TO BE FURNISHED BY A SELLER TO A BUYER OR LESSEE. Prices, terms and availability are subject to change at any time without notice. All dimensions are approximate. The floorplan is subject to change without notice. The seller reserves the absolute right, in its sole judgement and discretion, to substitute appliances, materials, fixtures and equipment of equal or greater value for those specified. There are various methods of calculating the total square footage of a condominium unit, and depending on the method of calculation, the quoted square footage of a condominium unit may vary more than a normal amount. The total condominium square footages as shown in this brochure are based on the "Architectural Method" of measurement which measures the exterior perimeter of the condominium unit, and also includes interior columns and fifty percent of demising walls. The method for calculating residential square footage used in marketing materials is different than the method used for calculating residential square footage in the condominium documents. Please see the Declaration of Condominium for more information. The model shown includes options and upgrades that are not a part of a base residence pricing. © The Kolter Group, March, 2021.

SOUTH TOWER AZURE RESIDENCE

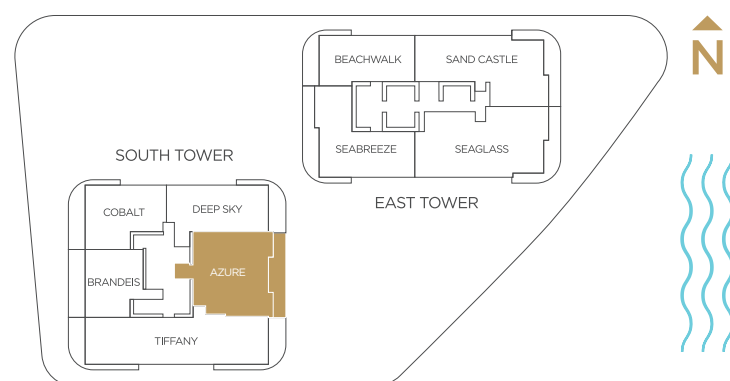
Specifications

2 Bedrooms | 3.5 Bathrooms | Den

Interior	2,423 SQFT
Exterior	436 SQFT
Total Area	2,859 SQFT



*Preliminary Draft - Version 1



PRESENTED BY
KOLTER

ORAL REPRESENTATIONS CANNOT BE RELIED UPON AS CORRECTLY STATING REPRESENTATIONS OF THE SELLER. FOR CORRECT REPRESENTATIONS, MAKE REFERENCE TO THIS BROCHURE AND TO THE DOCUMENTS REQUIRED BY SECTION 718.503, FLORIDA STATUTES. TO BE FURNISHED BY A SELLER TO A BUYER OR LESSEE. Prices, terms and availability are subject to change at any time without notice. All dimensions are approximate. The floorplan is subject to change without notice. The seller reserves the absolute right, in its sole judgement and discretion, to substitute appliances, materials, fixtures and equipment of equal or greater value for those specified. There are various methods of calculating the total square footage of a condominium unit, and depending on the method of calculation, the quoted square footage of a condominium unit may vary more than a normal amount. The total condominium square footages as shown in this brochure are based on the "Architectural Method" of measurement which measures the exterior perimeter of the condominium unit, and also includes interior columns and fifty percent of demising walls. The method for calculating residential square footage used in marketing materials is different than the method used for calculating residential square footage in the condominium documents. Please see the Declaration of Condominium for more information. The model shown includes options and upgrades that are not a part of a base residence pricing. © The Kolter Group, March, 2021.