

—  
—  
—  
**OCEAN PARK**  
SOUTH BEACH

**Penthouse 01**  
Private Terrace

—  
—  
—  
**OCEAN PARK**  
SOUTH BEACH

Sales Loft  
135 Ocean Drive, Miami Beach, FL 33139  
305-800-SOBE (7623)

[OceanParkSobe.com](http://OceanParkSobe.com)

These materials are not intended to be an offer to sell, or solicitation to buy a unit in the condominium. Such an offering shall only be made pursuant to the prospectus/offer circular for the condominium and no statements should be relied upon unless made in the prospectus or in the applicable purchase agreement. Multiplan Real Estate Asset Management ("Multiplan REAM") is not the project Developer. This Condominium is being developed by 312 Ocean Park, LLC, a Florida limited liability company, which has a limited right to use the trademarked names and logos of Multiplan REAM. Any and all statements, disclosures and/or representations shall be deemed made by the Developer and not by Multiplan REAM and you agree to look solely to Developer (and not to Multiplan REAM and/or any of its affiliates) with respect to any and all matters relating to the marketing and/or development of the Condominium and with respect to the sales of units in the Condominium. Additionally, Multiplan Empreendimentos Imobiliarios ("Multiplan Brazil") is not related to, or an affiliate of, Multiplan REAM or the Developer. Any and all statements, disclosures and/or representations shall be deemed made by the Developer and not by Multiplan Brazil and you agree to look solely to Developer (and not to Multiplan Brazil and/or any of its affiliates) with respect to any and all matters relating to the marketing and/or development of the Condominium and with respect to the sales of units in the Condominium. Stated square footages and dimensions are measured to the exterior boundaries of the exterior walls and the centerline of interior demising walls and in fact vary from the square footage and dimensions that would be determined by using the description and definition of the "UNF" set forth in the Declaration (which generally only includes the interior airspace between the perimeter walls and excludes all interior structural components and other common elements).

ORAL REPRESENTATIONS CANNOT BE RELIED UPON AS CORRECTLY STATING THE REPRESENTATIONS OF THE DEVELOPER. FOR CORRECT REPRESENTATIONS, REFERENCE SHOULD BE MADE TO THE DOCUMENTS REQUIRED BY SECTION 718.203, FLORIDA STATUTES. TO BE FURNISHED BY A DEVELOPER TO A BUYER OR LESSEE. These materials are not intended to be an offer to sell, or solicitation to buy a unit in the condominium.





## Penthouse 01

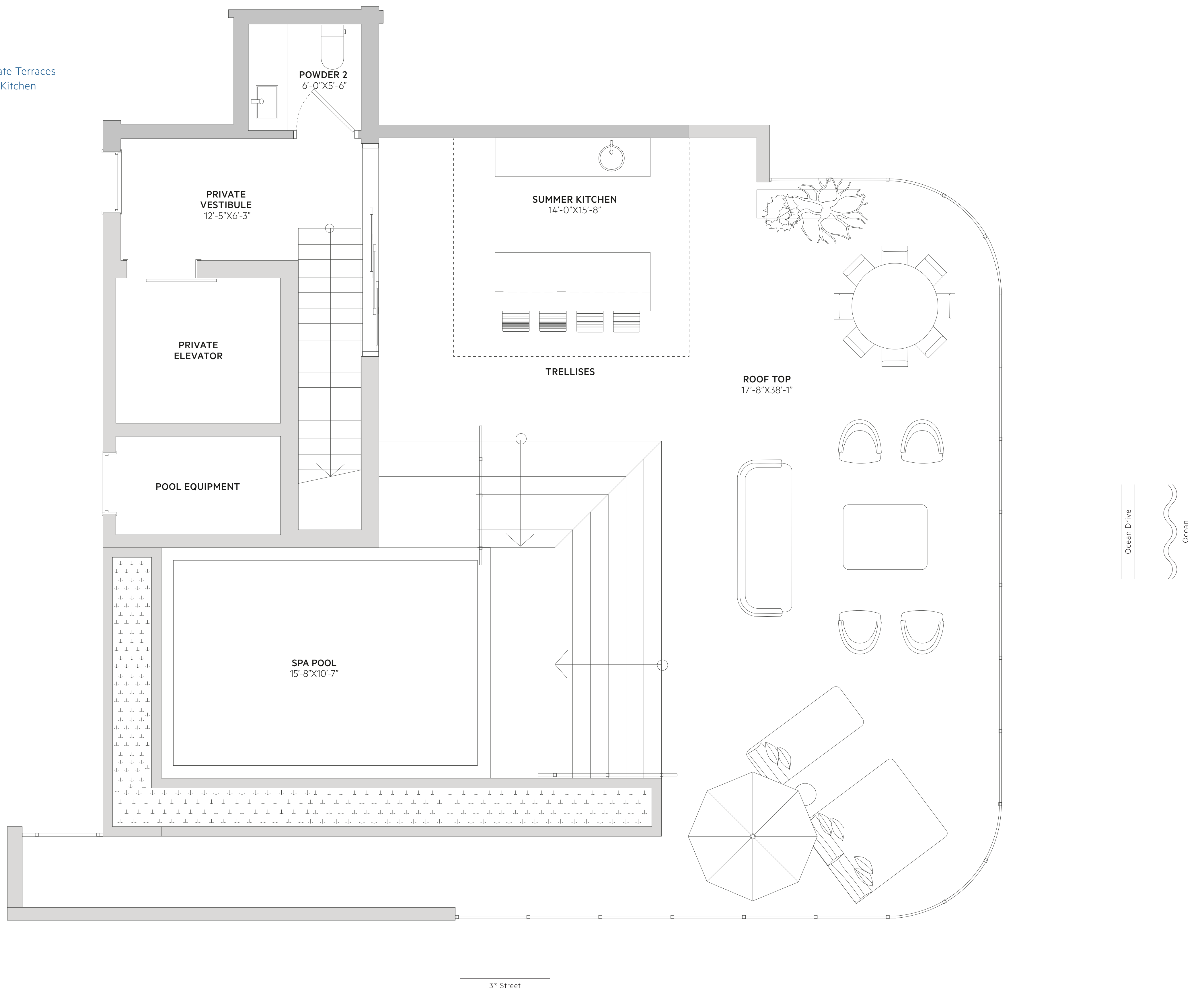
Private Terrace

4 Bedrooms | 4.5 Bathrooms | Private Terraces  
Rooftop 1/2 Bath | Pool & Summer Kitchen

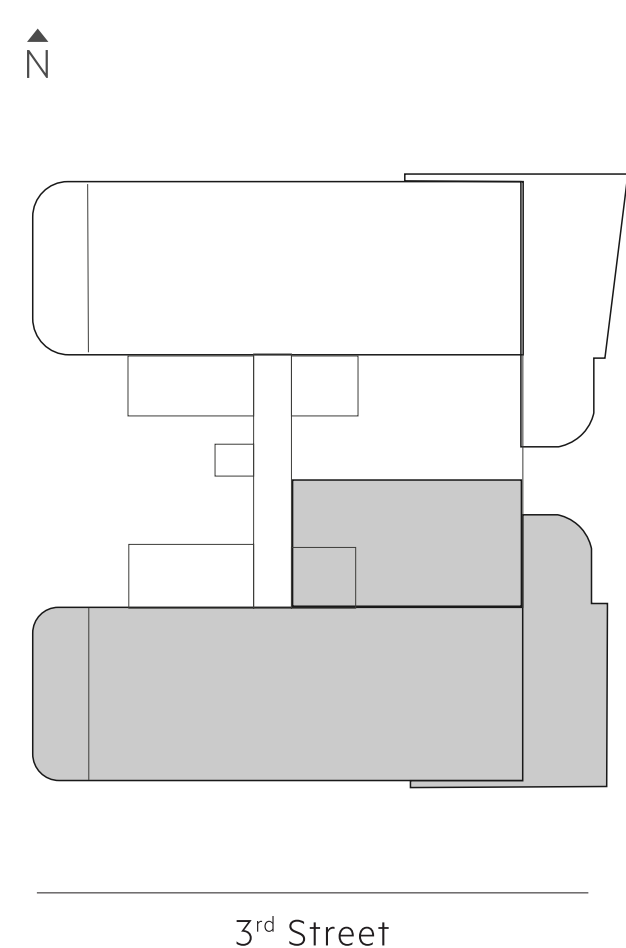
Interior 2,393 SQ FT | 222.3 SQ M

Exterior 2,224 SQ FT | 206.6 SQ M

**Total 4,617 SQ FT | 428.9 SQ M**



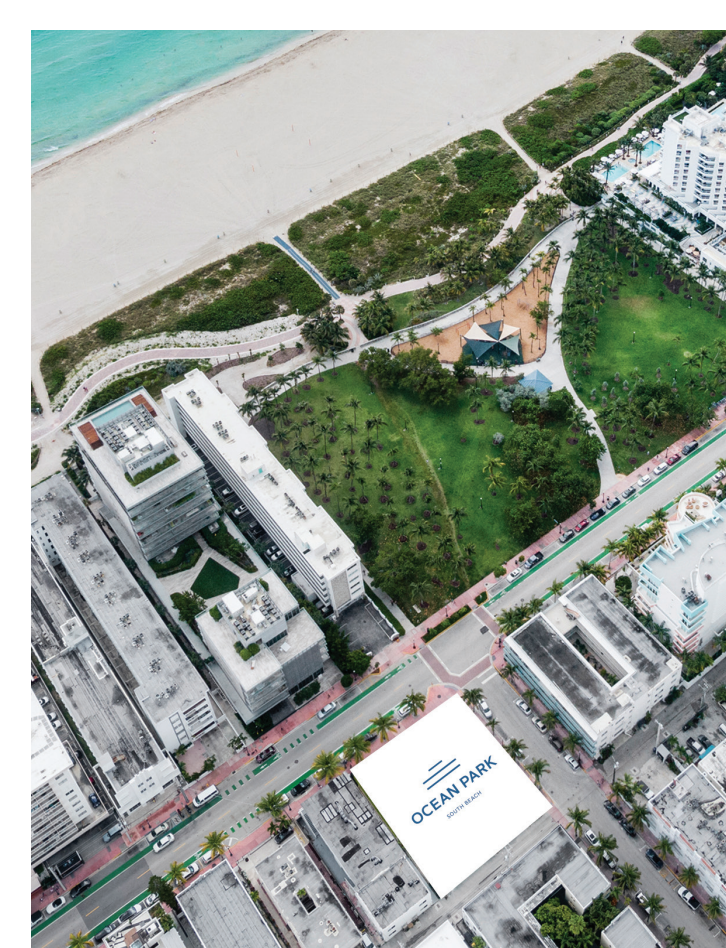
KEY PLAN



FAÇADE



AERIAL VIEW



Stated square footages and dimensions are measured to the exterior boundaries of the exterior walls and the centerline of interior demising walls and in fact vary from the square footage and dimensions that would be determined by using the description and definition of the "Unit" set forth in the Declaration (which generally only includes the interior airspace between the perimeter walls and excludes all interior structural components and other common elements). This method is generally used in sales materials and is provided to allow a prospective buyer to compare the Units with units in other condominium projects that utilize the same method. For your reference, the area of the Unit, determined in accordance with these defined unit boundaries, is set forth on Exhibit "D" to the Declaration. Measurements of rooms set forth on this floor plan are generally taken at the farthest points of each given room (as if the room were a perfect rectangle), without regard for any cutouts or variations. Accordingly, the area of the actual room will typically be smaller than the product obtained by multiplying the stated length and width. All dimensions are estimates which will vary with actual construction, and all floor plans, specifications and other development plans are subject to change and will not necessarily accurately reflect the final plans and specifications for the development. All depictions of appliances, counters, soffits, floor coverings and other matters of detail, including, without limitation, items of finish and decoration, are conceptual only and are not necessarily included in each Unit.

DISCLAIMER: REPRESENTATIONS CANNOT BE RELIED UPON AS CORRECTLY STATING THE REPRESENTATIONS OF THE DEVELOPER FOR CORRECT REPRESENTATIONS. REFERENCE SHOULD BE MADE TO THE DOCUMENTS REQUIRED BY SECTION 718.503, FLORIDA STATUTES, TO BE FURNISHED BY A DEVELOPER TO A BUYER OR LESSEE. These materials are not intended to be an offer to sell, or solicitation to buy a unit in the condominium.