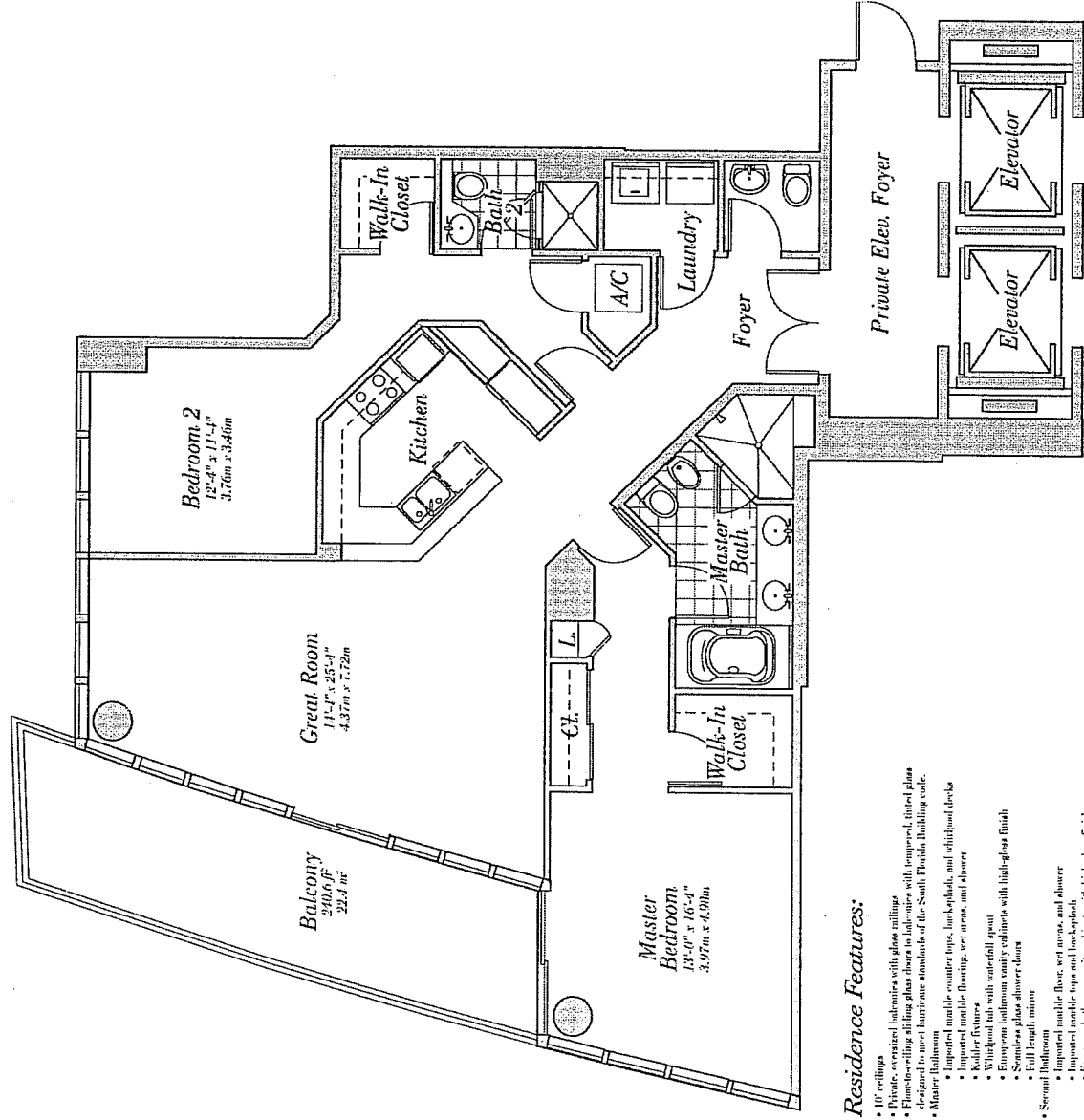


# Residence 01

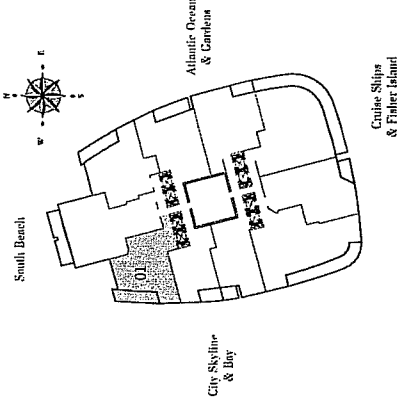
Floors 5-29

2 Bedrooms, 2 Baths, Powder Room  
1,591 s.f. 147.9m<sup>2</sup>



### Residence Features:

- 10' ceilings
- Private, oversized lockers with glass millings
- Flame-retardant sliding glass doors to balconies with tempered, third glass designed to meet hurricane standards of the South Florida Building code.
- Master Bedroom
  - Impressed marble counter tops, backsplashes, and whirlpool decks
  - Impressed marble flooring, wet areas, and shower
  - Walk-in closet
  - Whirlpool tub with waterfall spout
  - European bathroom vanity cabinets with high-gloss finish
  - Seamless glass shower doors
  - Full length mirror
- Second Bathroom
  - Impressed marble floor, wet areas, and shower
  - Impressed marble tops and lockers
  - European bathroom vanity cabinets with high-gloss finish
  - Glass enclosure for shower stall
- Powder Room
  - Kallier fixtures
- Kitchen
  - Custom, imported European cabinetry
  - Granite counter tops and backsplashes
  - Under counter lighting
  - Variable speed, recirculating range hood
  - Subzero 40" built-in refrigerator-freezer
  - Built-in touch-control cooking
  - Built-in electric convection oven
  - Kitchen built-in microwave oven
  - Kitchen built-in size refrigerator
  - Wine chiller in select refrigerator
  - Single-lever faucet with pull-out spray
- Laundry
  - Maytag Neptune front-load washer
  - Maytag Neptune front load electric dryer
- Pre-wiring for multiple telephone lines
- Pre-wiring for cable TV
- 40" multi-core wood entry doors
- Solid-core wood interior doors



**CONTINUUM**  
ON SOUTH BEACH