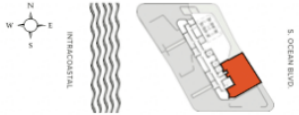
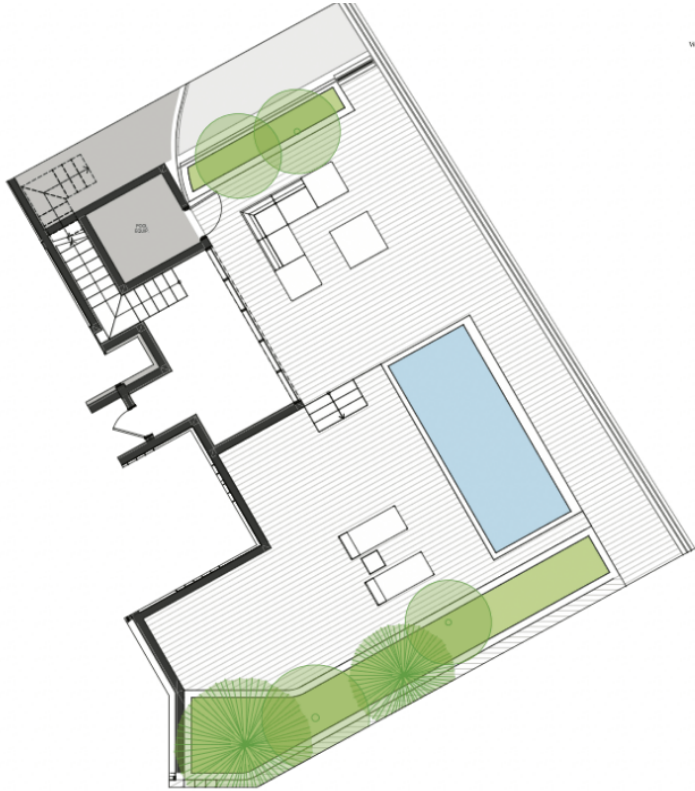


THE RITZ-CARLTON  
RESIDENCES


POMPANO BEACH

YACHT TOWER  
PH EAST

Roof Level



The Ritz-Carlton Residences, Pompano Beach are not owned, developed or sold by The Ritz-Carlton Hotel Company, L.L.C., or its affiliates ("Ritz-Carlton"). 1380 Ocean Associates, LLC uses The Ritz-Carlton marks under a license from Ritz-Carlton, which has not confirmed the accuracy of any of the statements or representations made herein.

 ORAL REPRESENTATIONS CANNOT BE RELIED UPON AS CORRECTLY STATING REPRESENTATIONS OF THE DEVELOPER. FOR CORRECT REPRESENTATIONS, MAKE REFERENCE TO THE DOCUMENTS THAT ARE REQUIRED BY SECTION 718.503, FLORIDA STATUTES, TO BE FURNISHED BY A DEVELOPER TO A BUYER OR LESSEE. THIS PROJECT IS BEING DEVELOPED BY 1380 OCEAN ASSOCIATES, LLC, WHICH HAS THE RIGHT TO USE THE TRADEMARK NAMES AND LOGOS OF FORTUNE INTERNATIONAL GROUP AND ONE CAPITAL. All room sizes and footprint measurements are approximate and may vary per unit. Floorplans and unit features are preliminary and proposed only. Developer reserves the right to modify, revise, change or withdraw any or all of same in its sole and absolute discretion and without prior notice. Depictions of furnishings, finishes, appliances, counters, soffits, floor coverings and other matters of detail, including, without limitation, items of finish and decoration are conceptual only and are not necessarily included in each unit. Consult your Agreement and the Prospectus for items included with your unit. The renderings contained herein are an artist impression, conceptual interpretation, proposed only and merely intended as illustration. No guarantee is made that the described features, services, amenities or facilities will be available or built. Developer reserves the right to make any modifications, revisions or withdrawals in its sole discretion and without prior notice. All improvements, design and construction are subject to first obtaining permits and approvals for same by the relevant authorities.