

Selene

OCEANFRONT RESIDENCES

FORT LAUDERDALE

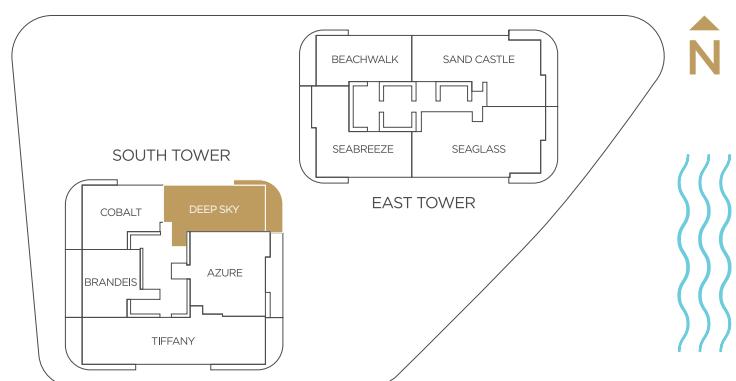
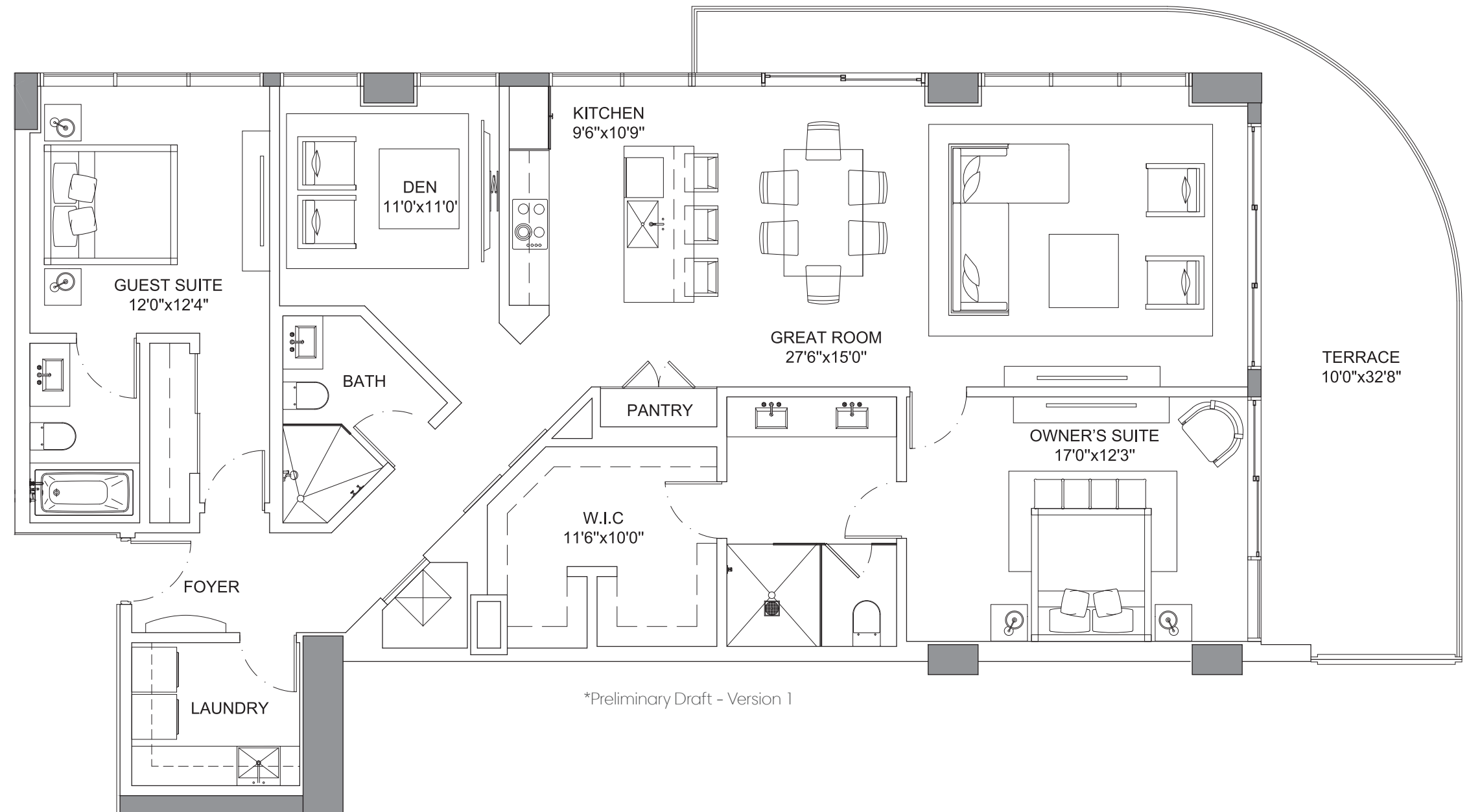
South Tower — Deep Sky Residence

SOUTH TOWER DEEP SKY RESIDENCE

Specifications

2 Bedrooms | 3 Bathrooms | Den

Interior	1,858 SQFT
Exterior	374 SQFT
Total Area	2,232 SQFT



ORAL REPRESENTATIONS CANNOT BE RELIED UPON AS CORRECTLY STATING REPRESENTATIONS OF THE SELLER. FOR CORRECT REPRESENTATIONS, MAKE REFERENCE TO THIS BROCHURE AND TO THE DOCUMENTS REQUIRED BY SECTION 718.503, FLORIDA STATUTES, TO BE FURNISHED BY A SELLER TO A BUYER OR LESSEE. Prices, terms and availability are subject to change at any time without notice. All dimensions are approximate. The floorplan is subject to change without notice. The seller reserves the absolute right, in its sole judgement and discretion, to substitute appliances, materials, fixtures and equipment of equal or greater value for those specified. There are various methods of calculating the total square footage of a condominium unit, and depending on the method of calculation, the quoted square footage of a condominium unit may vary more than a normal amount. The total condominium square footages as shown in this brochure are based on the "Architectural Method" of measurement which measures the exterior perimeter of the condominium unit, and also includes interior columns and fifty percent of demising walls. The method for calculating residential square footage used in marketing materials is different than the method used for calculating residential square footage in the condominium documents. Please see the Declaration of Condominium for more information. The model shown includes options and upgrades that are not a part of a base residence pricing. © The Kolter Group, March, 2021.



T 954-833-1911 | SeleneFTL.com

Preview Gallery located in the Douglas Elliman office in the Ritz-Carlton
1 N. Fort Lauderdale Beach Blvd., Fort Lauderdale, FL 33304