

ARIA
RESERVE
MIAMI

Skyview Residences

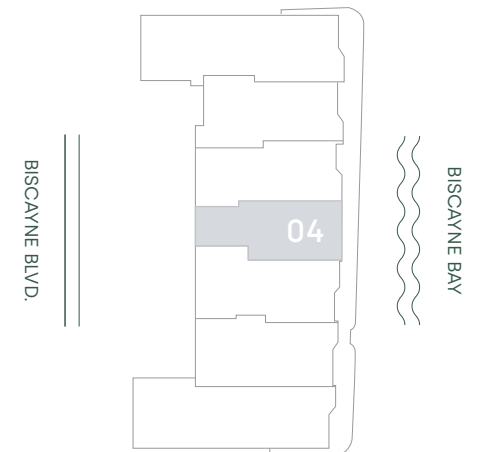
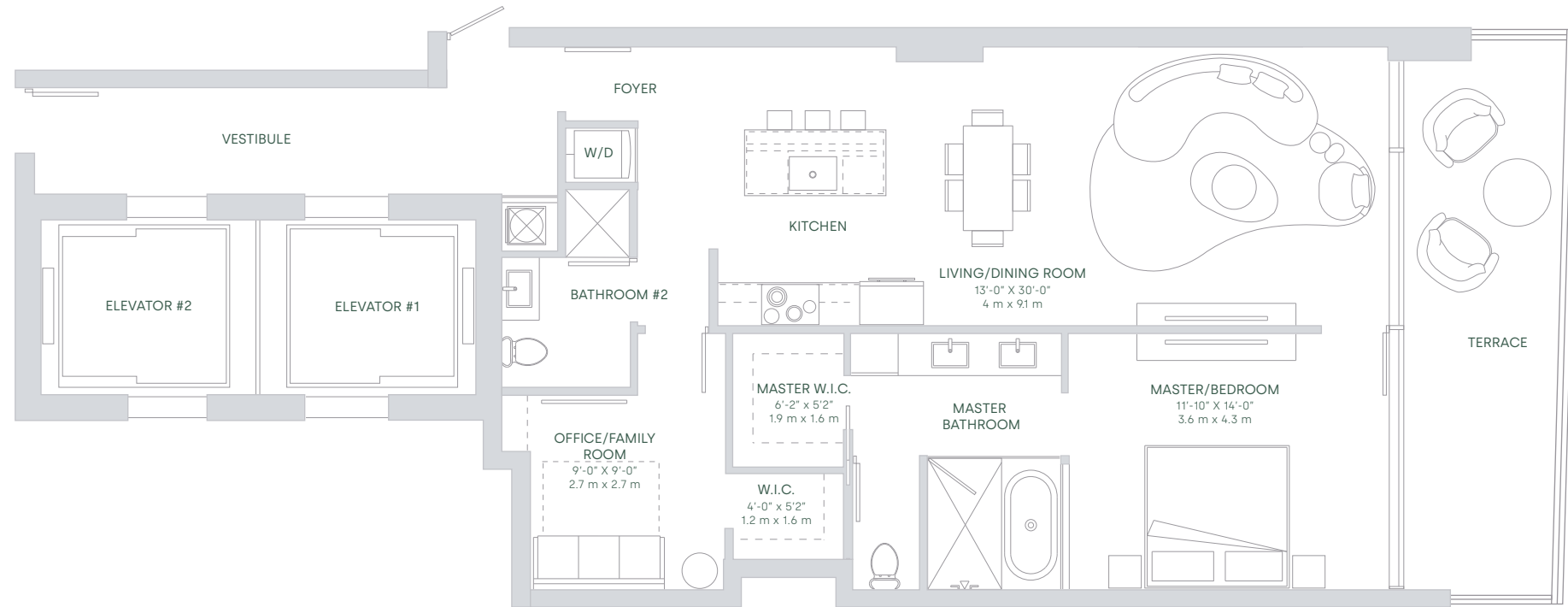


SKYVIEW RESIDENCES
LEVEL 51-56

TOTAL SQ.FT.	1,240 SQ.FT	115 SQ.MT
A/C AREA	1,059 SQ.FT	98 SQ.MT
TERRACE	181 SQ.FT	17 SQ.MT

LINE 04

1 BEDROOMS
2 BATHROOMS + OFFICE



ORAL REPRESENTATIONS CANNOT BE RELIED UPON AS CORRECTLY STATING THE REPRESENTATIONS OF THE DEVELOPER. FOR CORRECT REPRESENTATIONS, MAKE REFERENCE TO THIS BROCHURE AND TO THE DOCUMENTS REQUIRED BY SECTION 718.503, FLORIDA STATUTES, TO BE FURNISHED BY A DEVELOPER TO A BUYER OR LESSEE.

This is not intended to be an offer to sell, or solicitation to buy, condominium units to residents of any jurisdiction where prohibited by law, and your eligibility for purchase will depend upon your state of residency. The offering is made only by the prospectus for the condominium and no statement should be relied upon if not made in the prospectus. Stated interior square footage is measured to the exterior face of exterior walls and to the centerline of interior demising walls or to the exterior face of walls adjoining corridors or other common elements or shared facilities without excluding areas that may be occupied by columns or other structural components. This method of measurement varies from, and is larger than, the dimensions that would be determined by using the description and the definition of the Unit set forth in the Declaration (which generally only includes the interior airspace between the perimeter walls and excludes structural components). For reference, the area of the unit, determined in accordance with the unit boundaries set forth in the Declaration is set forth in Exhibit "3" to the Declaration. All dimensions are approximate and may vary with actual construction. Note that measurements of rooms set forth on this floor plan are generally taken at the greatest points of each given room (as if the room were a perfect rectangle), without regard for any cutouts or irregularities. Accordingly, the area of the actual room will typically be smaller than the product obtained by multiplying the stated length times width. The size and configuration of balconies and terraces varies throughout the building. The balcony depicted above is among the larger balconies and is not reflective of the actual size or configuration of the balcony for each unit of this unit type. For the actual size and configuration of the balcony for your unit, see Exhibit "2" to the Declaration of Condominium. All floor plans and development plans are subject to change. The Developer expressly reserves the right to make modifications, revisions, and changes it deems desirable in its sole and absolute discretion. Certain amenities and/or services require a separate Club membership and/or payment of certain use or access fees. All depictions of furnishings, appliances, built-ins, counters, and other matters of detail, including, without limitation, items of finish and decoration, are conceptual only and are not necessarily included in each Unit. Consult your prospectus and Purchase Agreement.