

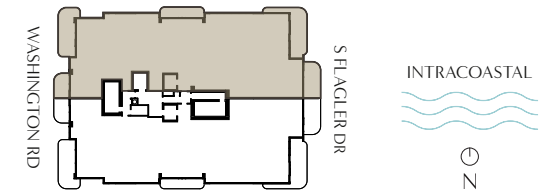
# MAISON D'OR

SOUTH FLAGLER

Estate  
A

LEVELS 15-17 | 4 Bedroom  
Den | 5.5 Bathroom

Interior 5,922 SF  
Terrace 1,133 SF  
Total 7,055 SF



Sales Gallery  
Coming Soon

Telephone  
561.273.7900

Email  
info@LiveMaisonOr.com

Website  
LiveMaisonOr.com

**KOLTERURBAN**

**PERKO**  
DEVELOPMENT PARTNERS



ORAL REPRESENTATIONS CANNOT BE RELIED UPON AS CORRECTLY STATING THE REPRESENTATIONS OF THE DEVELOPER. FOR CORRECT REPRESENTATIONS, MAKE REFERENCE TO THIS BROCHURE AND TO THE DOCUMENTS REQUIRED BY SECTION 718.503, FLORIDA STATUTES, TO BE FURNISHED BY A DEVELOPER TO A BUYER OR LESSEE. Stated interior square footage is measured to the exterior face of exterior walls and to the centerline of interior demising walls or to the exterior face of walls adjoining corridors or other common elements without excluding areas that may be occupied by columns or other structural components. This method of measurement varies from, and is larger than, the dimensions that would be determined by using the description and the definition of the Unit set forth in the Declaration (which generally only includes the interior airspace between the perimeter walls and excludes structural components). For reference, the area of the unit, determined in accordance with the unit boundaries set forth in the Declaration is set forth in Exhibit "3" to the Declaration. All dimensions are approximate and may vary with actual construction. Note that the stated interior square footage includes a portion of the Unit which is a non-contiguous storage closet located in the core of the building which is not depicted herein. See Exhibit "2" to the Declaration for the location and dimensions of the non-contiguous storage closet which is part of the Unit and included in the interior square footage described here in. Printed Dec 19 2025

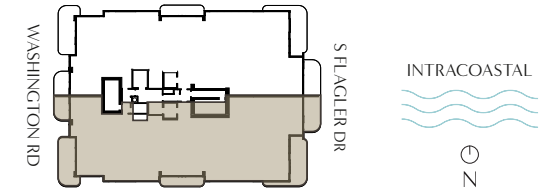
# MAISON D'OR

SOUTH FLAGLER

Estate  
**B**

LEVELS 15-17 | 4 Bedroom  
Den | 5.5 Bathroom

Interior 5,739 SF  
Terrace 1,133 SF  
Total 6,872 SF



Sales Gallery  
Coming Soon

Telephone  
561.273.7900

Email  
info@LiveMaisonOr.com

Website  
LiveMaisonOr.com

**KOLTERURBAN**

PERKO  
DEVELOPMENT PARTNERS



ORAL REPRESENTATIONS CANNOT BE RELIED UPON AS CORRECTLY STATING THE REPRESENTATIONS OF THE DEVELOPER. FOR CORRECT REPRESENTATIONS, MAKE REFERENCE TO THIS BROCHURE AND TO THE DOCUMENTS REQUIRED BY SECTION 718.503, FLORIDA STATUTES, TO BE FURNISHED BY A DEVELOPER TO A BUYER OR LESSEE. Stated interior square footage is measured to the exterior face of exterior walls and to the centerline of interior demising walls or to the exterior face of walls adjoining corridors or other common elements without excluding areas that may be occupied by columns or other structural components. This method of measurement varies from, and is larger than, the dimensions that would be determined by using the description and the definition of the Unit set forth in the Declaration (which generally only includes the interior airspace between the perimeter walls and excludes structural components). For reference, the area of the unit, determined in accordance with the unit boundaries set forth in the Declaration is set forth in Exhibit "3" to the Declaration. All dimensions are approximate and may vary with actual construction. Note that the stated interior square footage includes a portion of the Unit which is a non-contiguous storage closet located in the core of the building which is not depicted herein. See Exhibit "2" to the Declaration for the location and dimensions of the non-contiguous storage closet which is part of the Unit and included in the interior square footage described here in. Printed Dec 19 2025

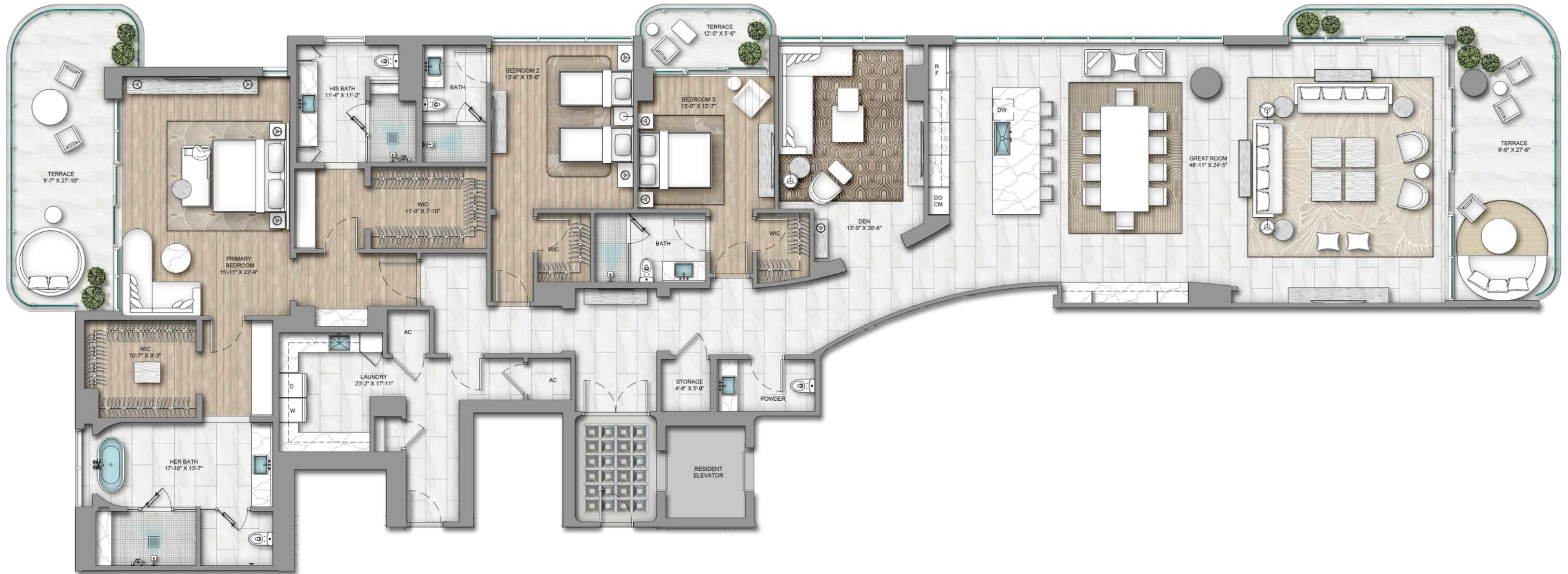
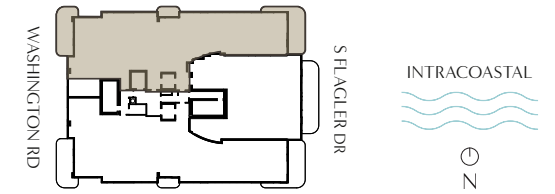
# MAISON D'OR

SOUTH FLAGLER

Residence  
A

LEVELS 5-14 | 3 Bedroom  
Den | 4.5 Bathroom

Interior 4,353 SF  
Terrace 693 SF  
Total 5,046 SF



Sales Gallery  
Coming Soon

Telephone  
561.273.7900

Email  
info@LiveMaisonOr.com

Website  
LiveMaisonOr.com

**KOLTERURBAN**

**PERKO**  
DEVELOPMENT PARTNERS



ORAL REPRESENTATIONS CANNOT BE RELIED UPON AS CORRECTLY STATING THE REPRESENTATIONS OF THE DEVELOPER. FOR CORRECT REPRESENTATIONS, MAKE REFERENCE TO THIS BROCHURE AND TO THE DOCUMENTS REQUIRED BY SECTION 718.503, FLORIDA STATUTES, TO BE FURNISHED BY A DEVELOPER TO A BUYER OR LESSEE. Stated interior square footage is measured to the exterior face of exterior walls and to the centerline of interior demising walls or to the exterior face of walls adjoining corridors or other common elements without excluding areas that may be occupied by columns or other structural components. This method of measurement varies from, and is larger than, the dimensions that would be determined by using the description and the definition of the Unit set forth in the Declaration (which generally only includes the interior airspace between the perimeter walls and excludes structural components). For reference, the area of the unit, determined in accordance with the unit boundaries set forth in the Declaration is set forth in Exhibit "3" to the Declaration. All dimensions are approximate and may vary with actual construction. Note that the stated interior square footage includes a portion of the Unit which is a non-contiguous storage closet located in the core of the building which is not depicted herein. See Exhibit "2" to the Declaration for the location and dimensions of the non-contiguous storage closet which is part of the Unit and included in the interior square footage described here in. Printed Dec 19 2025

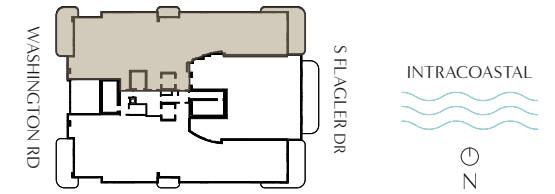
# MAISON D'OR

SOUTH FLAGLER

Residence  
**A1**

LEVEL 4 | 3 Bedroom  
Den | 4.5 Bathroom

Interior 4,141 SF  
Terrace 693 SF  
Total 4,834 SF



Sales Gallery  
Coming Soon

Telephone  
561.273.7900

Email  
info@LiveMaisondOr.com

Website  
LiveMaisondOr.com

**KOLTERURBAN**

**PERKO**  
DEVELOPMENT PARTNERS



ORAL REPRESENTATIONS CANNOT BE RELIED UPON AS CORRECTLY STATING THE REPRESENTATIONS OF THE DEVELOPER. FOR CORRECT REPRESENTATIONS, MAKE REFERENCE TO THIS BROCHURE AND TO THE DOCUMENTS REQUIRED BY SECTION 718.503, FLORIDA STATUTES, TO BE FURNISHED BY A DEVELOPER TO A BUYER OR LESSEE. Stated interior square footage is measured to the exterior face of exterior walls and to the centerline of interior demising walls or to the exterior face of walls adjoining corridors or other common elements without excluding areas that may be occupied by columns or other structural components. This method of measurement varies from, and is larger than, the dimensions that would be determined by using the description and the definition of the Unit set forth in the Declaration (which generally only includes the interior airspace between the perimeter walls and excludes structural components). For reference, the area of the unit, determined in accordance with the unit boundaries set forth in the Declaration is set forth in Exhibit "3" to the Declaration. All dimensions are approximate and may vary with actual construction. Note that the stated interior square footage includes a portion of the Unit which is a non-contiguous storage closet located in the core of the building which is not depicted herein. See Exhibit "2" to the Declaration for the location and dimensions of the non-contiguous storage closet which is part of the Unit and included in the interior square footage described here in. Printed Dec 19 2025

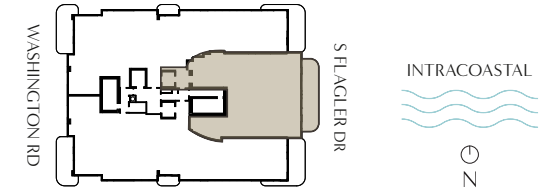
# MAISON D'OR

SOUTH FLAGLER

## Residence B

LEVELS 4-14 | 2 Bedroom  
Den | 3 Bathroom

Interior 2,991 SF  
Terrace 420 SF  
Total 3,411 SF



Sales Gallery  
Coming Soon

Telephone  
561.273.7900

Email  
info@LiveMaisonOr.com

Website  
LiveMaisonOr.com

**KOLTERURBAN**

**PERKO**  
DEVELOPMENT PARTNERS



ORAL REPRESENTATIONS CANNOT BE RELIED UPON AS CORRECTLY STATING THE REPRESENTATIONS OF THE DEVELOPER. FOR CORRECT REPRESENTATIONS, MAKE REFERENCE TO THIS BROCHURE AND TO THE DOCUMENTS REQUIRED BY SECTION 718.503, FLORIDA STATUTES, TO BE FURNISHED BY A DEVELOPER TO A BUYER OR LESSEE. Stated interior square footage is measured to the exterior face of exterior walls and to the centerline of interior demising walls or to the exterior face of walls adjoining corridors or other common elements without excluding areas that may be occupied by columns or other structural components. This method of measurement varies from, and is larger than, the dimensions that would be determined by using the description and the definition of the Unit set forth in the Declaration (which generally only includes the interior airspace between the perimeter walls and excludes structural components). For reference, the area of the unit, determined in accordance with the unit boundaries set forth in the Declaration is set forth in Exhibit "3" to the Declaration. All dimensions are approximate and may vary with actual construction. Note that the stated interior square footage includes a portion of the Unit which is a non-contiguous storage closet located in the core of the building which is not depicted herein. See Exhibit "2" to the Declaration for the location and dimensions of the non-contiguous storage closet which is part of the Unit and included in the interior square footage described here in. Printed Dec 19 2025

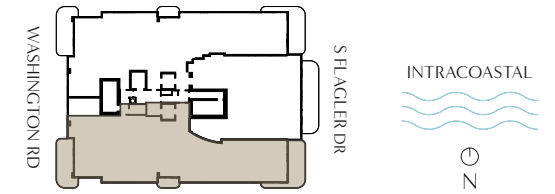
# MAISON D'OR

SOUTH FLAGLER

## Residence C

LEVELS 5-14 | 3 Bedroom  
Den | 4.5 Bathroom

Interior 4,430 SF  
Terrace 693 SF  
Total 5,123 SF



Sales Gallery  
Coming Soon

Telephone  
561.273.7900

Email  
info@LiveMaisonOr.com

Website  
LiveMaisonOr.com

**KOLTERURBAN**

**PERKO**  
DEVELOPMENT PARTNERS



ORAL REPRESENTATIONS CANNOT BE RELIED UPON AS CORRECTLY STATING THE REPRESENTATIONS OF THE DEVELOPER. FOR CORRECT REPRESENTATIONS, MAKE REFERENCE TO THIS BROCHURE AND TO THE DOCUMENTS REQUIRED BY SECTION 718.503, FLORIDA STATUTES, TO BE FURNISHED BY A DEVELOPER TO A BUYER OR LESSEE. Stated interior square footage is measured to the exterior face of exterior walls and to the centerline of interior demising walls or to the exterior face of walls adjoining corridors or other common elements without excluding areas that may be occupied by columns or other structural components. This method of measurement varies from, and is larger than, the dimensions that would be determined by using the description and the definition of the Unit set forth in the Declaration (which generally only includes the interior airspace between the perimeter walls and excludes structural components). For reference, the area of the unit, determined in accordance with the unit boundaries set forth in the Declaration is set forth in Exhibit "3" to the Declaration. All dimensions are approximate and may vary with actual construction. Note that the stated interior square footage includes a portion of the Unit which is a non-contiguous storage closet located in the core of the building which is not depicted herein. See Exhibit "2" to the Declaration for the location and dimensions of the non-contiguous storage closet which is part of the Unit and included in the interior square footage described here in. Printed Dec 19 2025

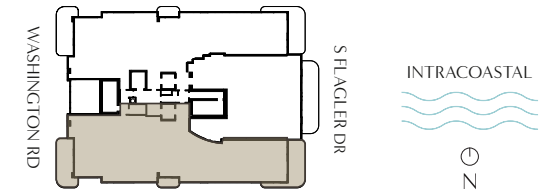
# MAISON D'OR

SOUTH FLAGLER

## Residence C1

LEVEL 4 | 3 Bedroom  
Den | 4.5 Bathroom

Interior 4,230 SF  
Terrace 693 SF  
Total 4,923 SF



Sales Gallery  
Coming Soon

Telephone  
561.273.7900

Email  
info@LiveMaisonOr.com

Website  
LiveMaisonOr.com

**KOLTERURBAN**

**PERKO**  
DEVELOPMENT PARTNERS



ORAL REPRESENTATIONS CANNOT BE RELIED UPON AS CORRECTLY STATING THE REPRESENTATIONS OF THE DEVELOPER. FOR CORRECT REPRESENTATIONS, MAKE REFERENCE TO THIS BROCHURE AND TO THE DOCUMENTS REQUIRED BY SECTION 718.503, FLORIDA STATUTES, TO BE FURNISHED BY A DEVELOPER TO A BUYER OR LESSEE. Stated interior square footage is measured to the exterior face of exterior walls and to the centerline of interior demising walls or to the exterior face of walls adjoining corridors or other common elements without excluding areas that may be occupied by columns or other structural components. This method of measurement varies from, and is larger than, the dimensions that would be determined by using the description and the definition of the Unit set forth in the Declaration (which generally only includes the interior airspace between the perimeter walls and excludes structural components). For reference, the area of the unit, determined in accordance with the unit boundaries set forth in the Declaration is set forth in Exhibit "3" to the Declaration. All dimensions are approximate and may vary with actual construction. Note that the stated interior square footage includes a portion of the Unit which is a non-contiguous storage closet located in the core of the building which is not depicted herein. See Exhibit "2" to the Declaration for the location and dimensions of the non-contiguous storage closet which is part of the Unit and included in the interior square footage described here in. Printed Dec 19 2025

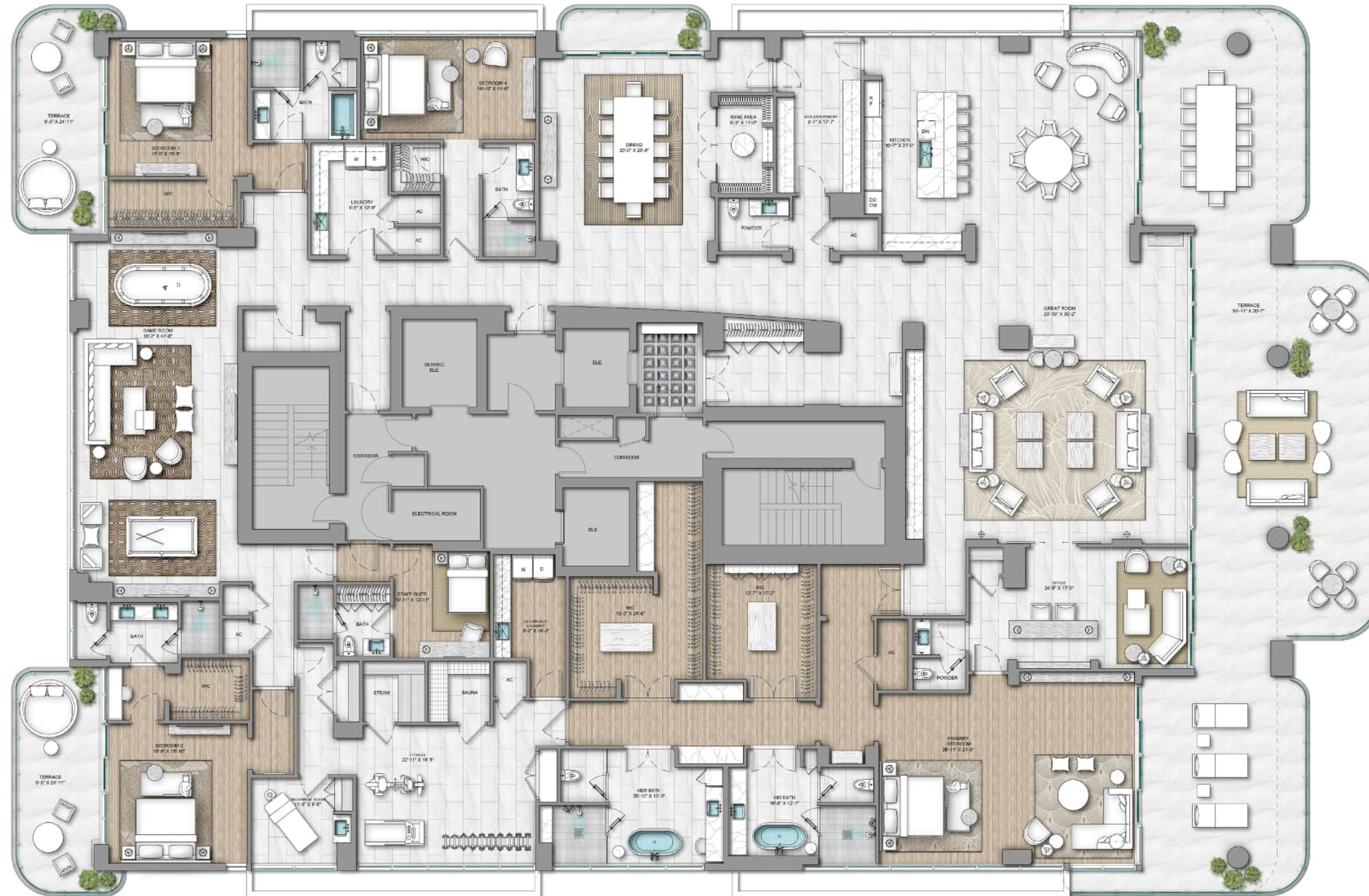
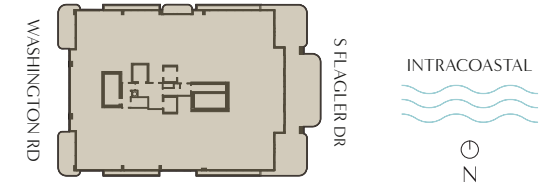
# MAISON D'OR

SOUTH FLAGLER

## Penthouse PH

LEVEL 19 | 4 Bedroom | Den | Fitness  
Office | Staff Suite | 6 Full | 3 Half Bathrooms

Interior 10,190 SF  
Terrace 2,554 SF  
Total 12,744 SF



Sales Gallery  
Coming Soon

Telephone  
561.273.7900

Email  
info@LiveMaisonDOr.com

Website  
LiveMaisonDOr.com

**KOLTERURBAN**

**PERKO**  
DEVELOPMENT PARTNERS



ORAL REPRESENTATIONS CANNOT BE RELIED UPON AS CORRECTLY STATING THE REPRESENTATIONS OF THE DEVELOPER. FOR CORRECT REPRESENTATIONS, MAKE REFERENCE TO THIS BROCHURE AND TO THE DOCUMENTS REQUIRED BY SECTION 718.503, FLORIDA STATUTES, TO BE FURNISHED BY A DEVELOPER TO A BUYER OR LESSEE. Stated interior square footage is measured to the exterior face of exterior walls and to the centerline of interior demising walls or to the exterior face of walls adjoining corridors or other common elements without excluding areas that may be occupied by columns or other structural components. This method of measurement varies from, and is larger than, the dimensions that would be determined by using the description and the definition of the Unit set forth in the Declaration (which generally only includes the interior airspace between the perimeter walls and excludes structural components). For reference, the area of the unit, determined in accordance with the unit boundaries set forth in the Declaration is set forth in Exhibit "3" to the Declaration. All dimensions are approximate and may vary with actual construction. Note that the stated interior square footage includes a portion of the Unit which is a non-contiguous storage closet located in the core of the building which is not depicted herein. See Exhibit "2" to the Declaration for the location and dimensions of the non-contiguous storage closet which is part of the Unit and included in the interior square footage described here in. Printed Dec 19 2025

# MAISON D'OR

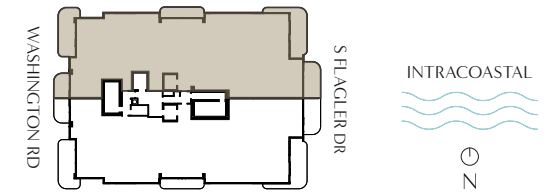
SOUTH FLAGLER

Lower Penthouse

# A

LEVEL 18 | 4 Bedroom  
Den | 5.5 Bathroom

Interior 5,922 SF  
Terrace 1,133 SF  
Total 7,055 SF



Sales Gallery  
Coming Soon

Telephone  
561.273.7900

Email  
info@LiveMaisonOr.com

Website  
LiveMaisonOr.com

**KOLTERURBAN**

**PERKO**  
DEVELOPMENT PARTNERS



ORAL REPRESENTATIONS CANNOT BE RELIED UPON AS CORRECTLY STATING THE REPRESENTATIONS OF THE DEVELOPER. FOR CORRECT REPRESENTATIONS, MAKE REFERENCE TO THIS BROCHURE AND TO THE DOCUMENTS REQUIRED BY SECTION 718.503, FLORIDA STATUTES, TO BE FURNISHED BY A DEVELOPER TO A BUYER OR LESSEE. Stated interior square footage is measured to the exterior face of exterior walls and to the centerline of interior demising walls or to the exterior face of walls adjoining corridors or other common elements without excluding areas that may be occupied by columns or other structural components. This method of measurement varies from, and is larger than, the dimensions that would be determined by using the description and the definition of the Unit set forth in the Declaration (which generally only includes the interior airspace between the perimeter walls and excludes structural components). For reference, the area of the unit, determined in accordance with the unit boundaries set forth in the Declaration is set forth in Exhibit "3" to the Declaration. All dimensions are approximate and may vary with actual construction. Note that the stated interior square footage includes a portion of the Unit which is a non-contiguous storage closet located in the core of the building which is not depicted herein. See Exhibit "2" to the Declaration for the location and dimensions of the non-contiguous storage closet which is part of the Unit and included in the interior square footage described here in. Printed Dec 19 2025

# MAISON D'OR

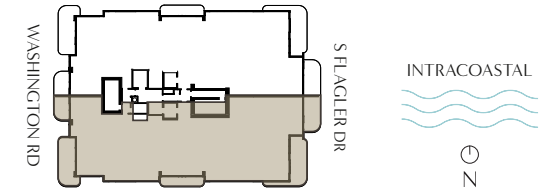
SOUTH FLAGLER

## Lower Penthouse

# B

LEVEL 18 | 4 Bedroom  
Den | 5.5 Bathroom

Interior 5,739 SF  
Terrace 1,133 SF  
Total 6,872 SF



Sales Gallery  
Coming Soon

Telephone  
561.273.7900

Email  
info@LiveMaisonOr.com

Website  
LiveMaisonOr.com

**KOLTERURBAN**

**PERKO**  
DEVELOPMENT PARTNERS



ORAL REPRESENTATIONS CANNOT BE RELIED UPON AS CORRECTLY STATING THE REPRESENTATIONS OF THE DEVELOPER. FOR CORRECT REPRESENTATIONS, MAKE REFERENCE TO THIS BROCHURE AND TO THE DOCUMENTS REQUIRED BY SECTION 718.503, FLORIDA STATUTES, TO BE FURNISHED BY A DEVELOPER TO A BUYER OR LESSEE. Stated interior square footage is measured to the exterior face of exterior walls and to the centerline of interior demising walls or to the exterior face of walls adjoining corridors or other common elements without excluding areas that may be occupied by columns or other structural components. This method of measurement varies from, and is larger than, the dimensions that would be determined by using the description and the definition of the Unit set forth in the Declaration (which generally only includes the interior airspace between the perimeter walls and excludes structural components). For reference, the area of the unit, determined in accordance with the unit boundaries set forth in the Declaration is set forth in Exhibit "3" to the Declaration. All dimensions are approximate and may vary with actual construction. Note that the stated interior square footage includes a portion of the Unit which is a non-contiguous storage closet located in the core of the building which is not depicted herein. See Exhibit "2" to the Declaration for the location and dimensions of the non-contiguous storage closet which is part of the Unit and included in the interior square footage described here in. Printed Dec 19 2025