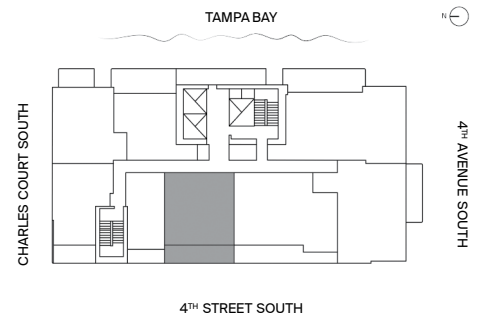
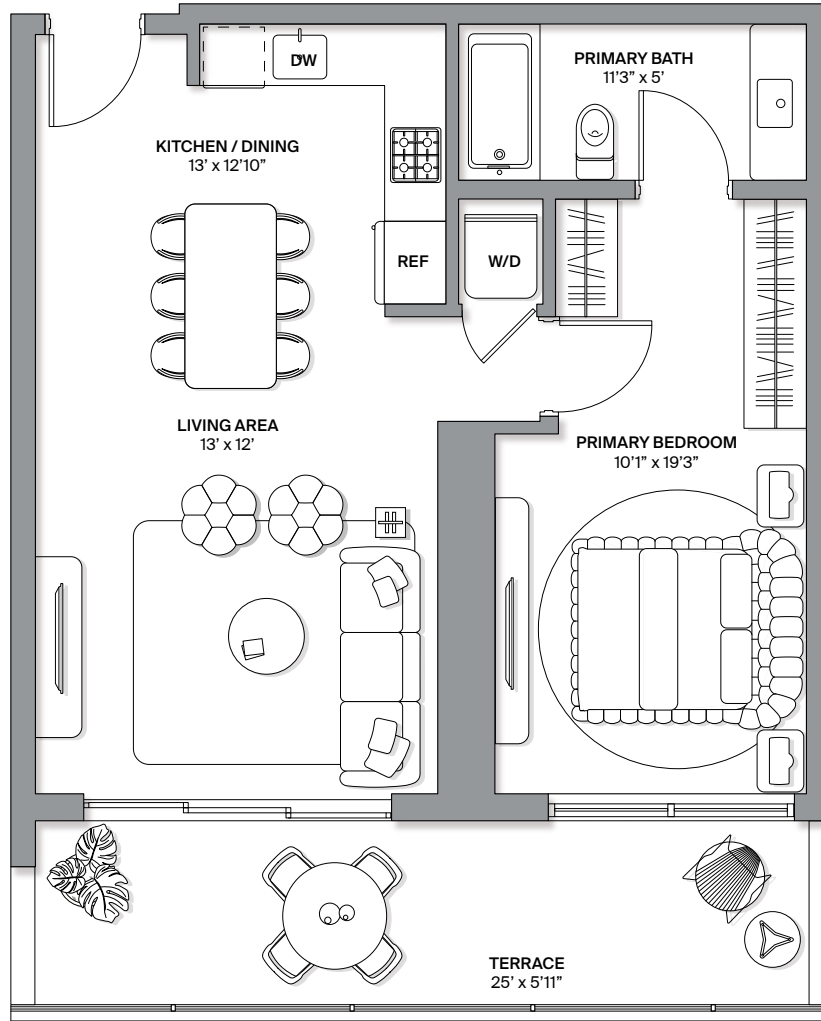


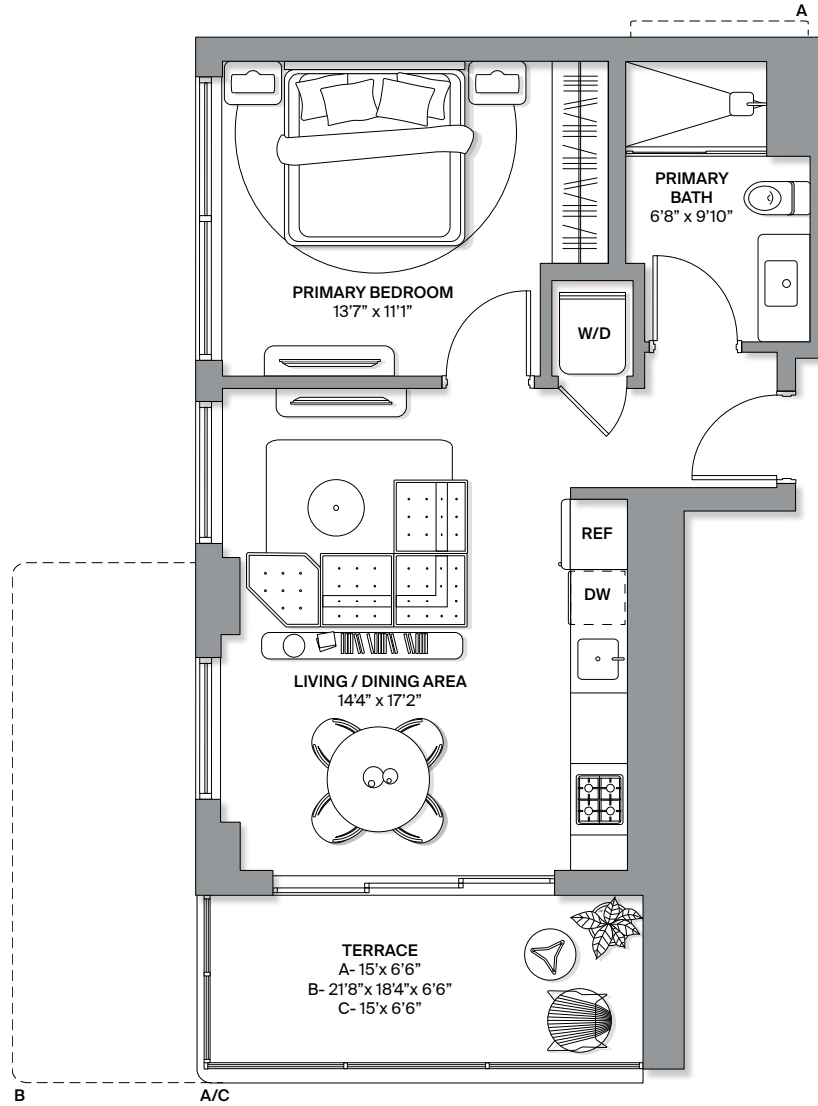
|                       |                  |                |
|-----------------------|------------------|----------------|
| INTERIOR              | 370 SQ FT        | 34 SQ M        |
| TERRACE (Floors 6-26) | 61 SQ FT         | 6 SQ M         |
| <b>TOTAL</b>          | <b>431 SQ FT</b> | <b>40 SQ M</b> |

Stated dimensions are measured to the exterior boundaries of the exterior walls and the centerline of interior demising walls and in fact vary from the dimensions that would be determined by using the description and definition of the "Unit" set forth in the Declaration (which generally only includes the interior airspace between the perimeter walls and excludes interior structural components). For your reference, the area of the Unit, determined in accordance with those defined unit boundaries, is set forth in the Declaration of Condominium. Note that measurements of rooms set forth on this floor plan are generally taken at the greatest points of each given room (as if the room were a perfect rectangle), without regard for any cutouts. Accordingly, the area of the actual room will typically be smaller than the product obtained by multiplying the stated lengths times widths. All dimensions are approximate and may vary with actual construction, and all floor plans and development plans are subject to change. Roche Bobois assumes no responsibility or liability in connection with the project, and makes no representation or warranty in respect thereof. All dimensions shown are approximate and subject to construction variances and tolerances. Plans may contain variations from floor to floor and residence to residence, and are subject to change without notice. Please refer to website for all disclaimers: <https://rocheboboistower.com/legal>

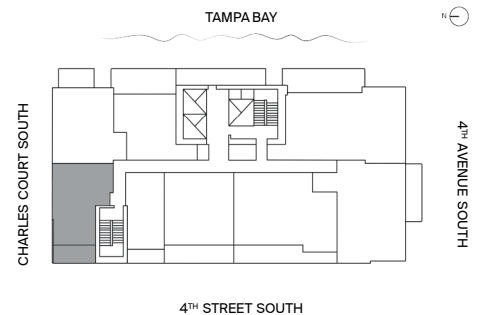


|                       |                  |                |
|-----------------------|------------------|----------------|
| INTERIOR              | 685 SQ FT        | 64 SQ M        |
| TERRACE (Floors 6-26) | 167 SQ FT        | 16 SQ M        |
| <b>TOTAL</b>          | <b>852 SQ FT</b> | <b>80 SQ M</b> |

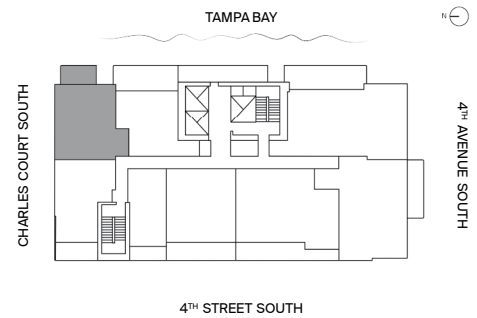
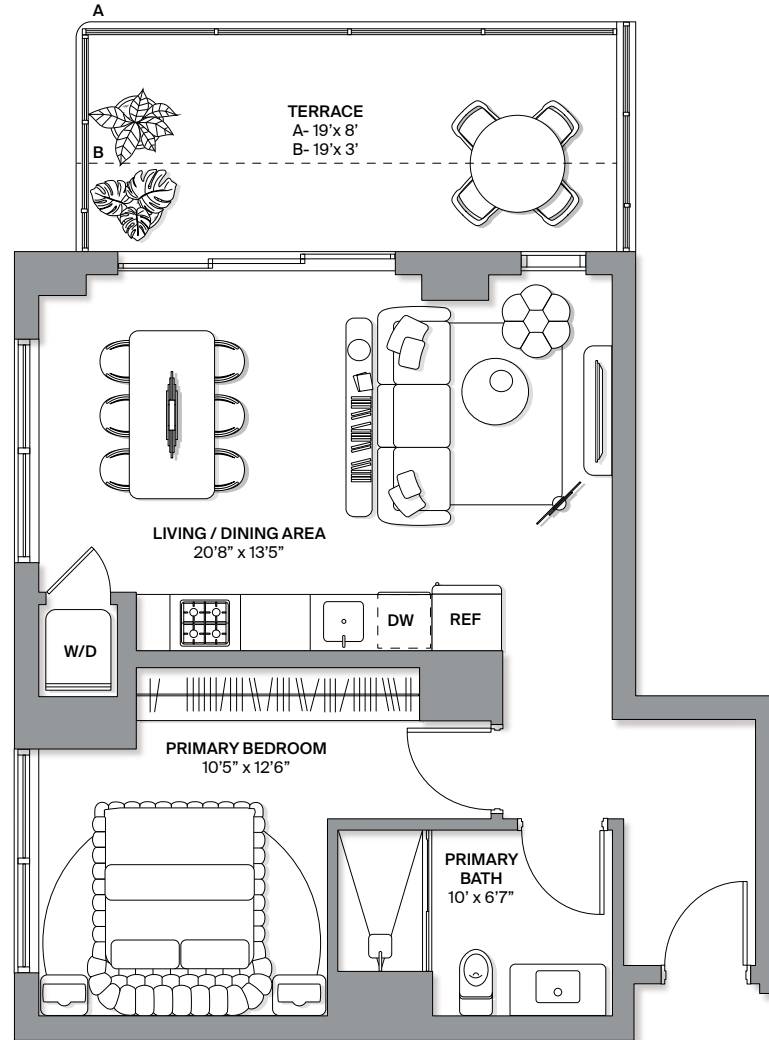
Stated dimensions are measured to the exterior boundaries of the exterior walls and the centerline of interior demising walls and in fact vary from the dimensions that would be determined by using the description and definition of the "Unit" set forth in the Declaration (which generally only includes the interior airspace between the perimeter walls and excludes interior structural components). For your reference, the area of the Unit, determined in accordance with those defined unit boundaries, is set forth in the Declaration of Condominium. Note that measurements of rooms set forth on this floor plan are generally taken at the greatest points of each given room (as if the room were a perfect rectangle), without regard for any cutouts. Accordingly, the area of the actual room will typically be smaller than the product obtained by multiplying the stated lengths times widths. All dimensions are approximate and may vary with actual construction, and all floor plans and development plans are subject to change. Roche Bobois assumes no responsibility or liability in connection with the project, and makes no representation or warranty in respect thereof. All dimensions shown are approximate and subject to construction variances and tolerances. Plans may contain variations from floor to floor and residence to residence, and are subject to change without notice. Please refer to website for all disclaimers: <https://rocheboboistower.com/legal>



|  |                        |                     |
|--|------------------------|---------------------|
| INTERIOR A (Floors 19-26)                    | 578 SQ FT              | 54 SQ M             |
| TERRACE A (Floors 19-26)                     | 104 SQ FT              | 10 SQ M             |
| INTERIOR B (Floors 8, 9, 12, 16, 18)         | 567 SQ FT              | 53 SQ M             |
| TERRACE B (Floors 8, 9, 12, 16, 18)          | 228 SQ FT              | 21 SQ M             |
| INTERIOR C (Floors 6, 7, 10, 11, 14, 15, 17) | 567 SQ FT              | 53 SQ M             |
| TERRACE C (Floors 6, 7, 10, 11, 14, 15, 17)  | 104 SQ FT              | 10 SQ M             |
| <b>TOTAL</b>                                 | <b>671 - 795 SQ FT</b> | <b>63 - 74 SQ M</b> |

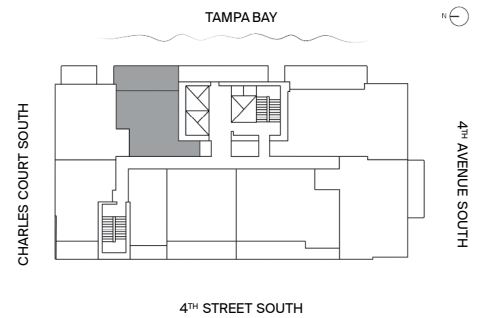
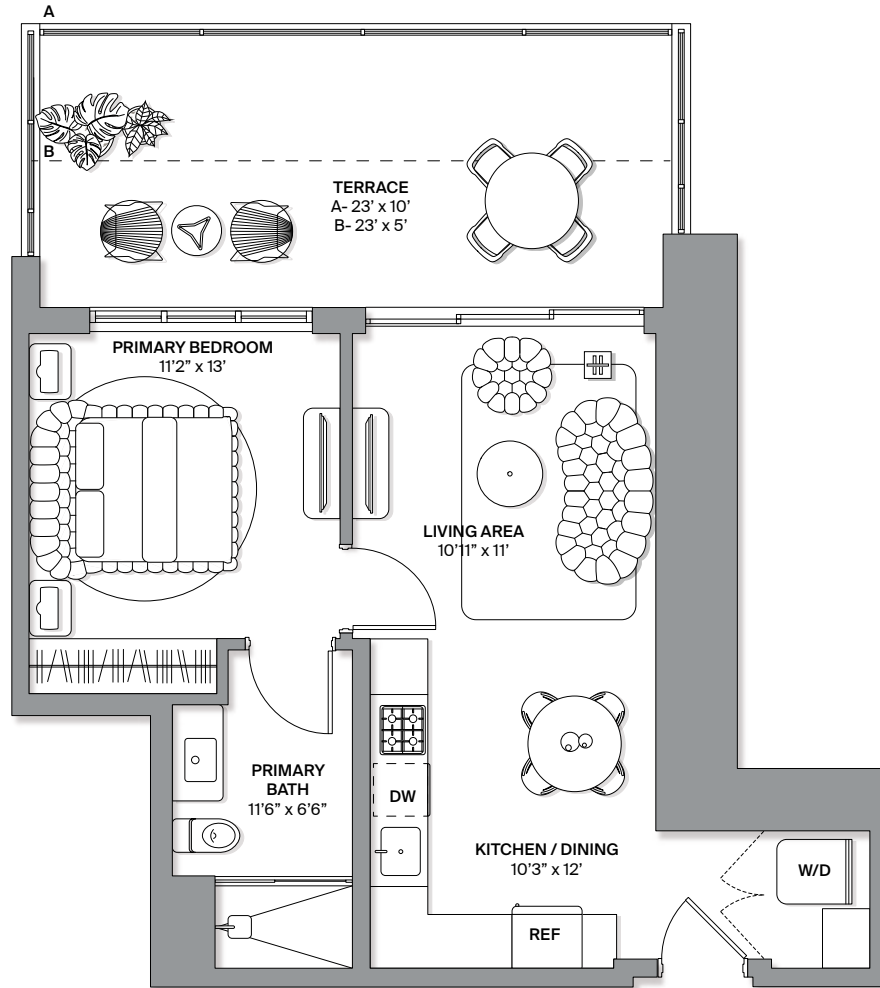


Stated dimensions are measured to the exterior boundaries of the exterior walls and the centerline of interior demising walls and in fact vary from the dimensions that would be determined by using the description and definition of the "Unit" set forth in the Declaration (which generally only includes the interior airspace between the perimeter walls and excludes interior structural components). For your reference, the area of the Unit, determined in accordance with those defined unit boundaries, is set forth in the Declaration of Condominium. Note that measurements of rooms set forth on this floor plan are generally taken at the greatest points of each given room (as if the room were a perfect rectangle), without regard for any cutouts. Accordingly, the area of the actual room will typically be smaller than the product obtained by multiplying the stated lengths times widths. All dimensions are approximate and may vary with actual construction, and all floor plans and development plans are subject to change. Roche Bobois assumes no responsibility or liability in connection with the project, and makes no representation or warranty in respect thereof. All dimensions shown are approximate and subject to construction variances and tolerances. Plans may contain variations from floor to floor and residence to residence, and are subject to change without notice. Please refer to website for all disclaimers: <https://rocheboboisstower.com/legal>



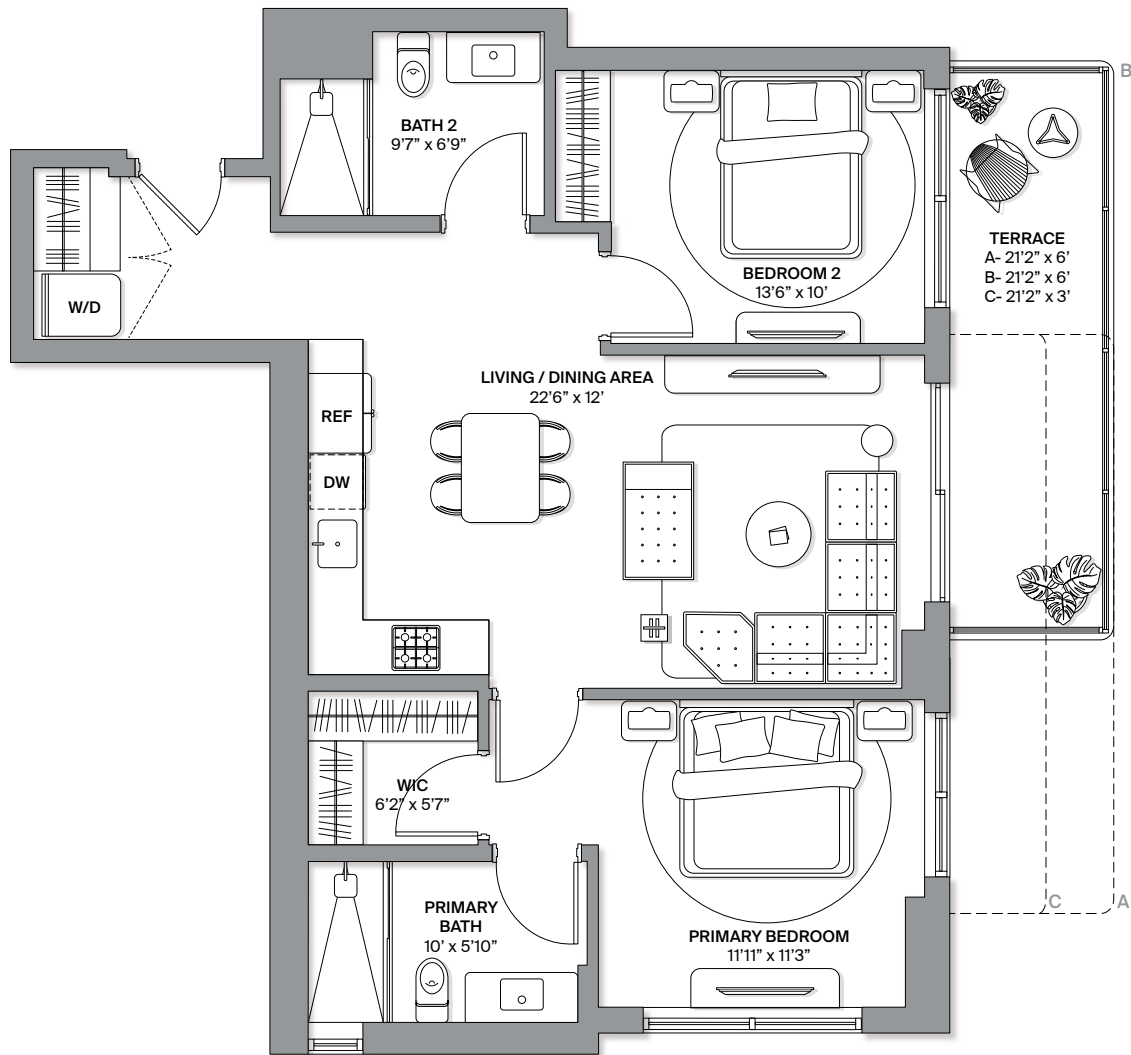
|                         |                        |                     |
|-------------------------|------------------------|---------------------|
| INTERIOR                | 660 SQ FT              | 61 SQ M             |
| TERRACE A (Floors 7-18) | 164 SQ FT              | 15 SQ M             |
| TERRACE B (Floor 6)     | 67 SQ FT               | 6 SQ M              |
| <b>TOTAL</b>            | <b>727 - 824 SQ FT</b> | <b>67 - 76 SQ M</b> |

Stated dimensions are measured to the exterior boundaries of the exterior walls and the centerline of interior demising walls and in fact vary from the dimensions that would be determined by using the description and definition of the "Unit" set forth in the Declaration (which generally only includes the interior airspace between the perimeter walls and excludes interior structural components). For your reference, the area of the Unit, determined in accordance with those defined unit boundaries, is set forth in the Declaration of Condominium. Note that measurements of rooms set forth on this floor plan are generally taken at the greatest points of each given room (as if the room were a perfect rectangle), without regard for any cutouts. Accordingly, the area of the actual room will typically be smaller than the product obtained by multiplying the stated lengths times widths. All dimensions are approximate and may vary with actual construction, and all floor plans and development plans are subject to change. Roche Bobois assumes no responsibility or liability in connection with the project, and makes no representation or warranty in respect thereof. All dimensions shown are approximate and subject to construction variances and tolerances. Plans may contain variations from floor to floor and residence to residence, and are subject to change without notice. Please refer to website for all disclaimers: <https://rocheboboistower.com/legal>

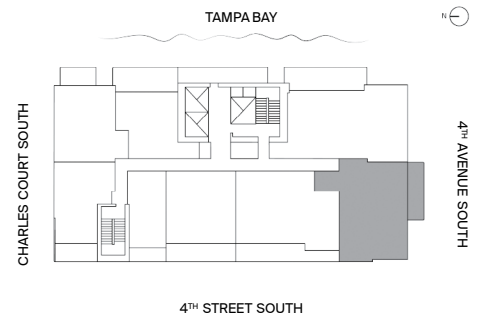


|                         |                        |                     |
|-------------------------|------------------------|---------------------|
| INTERIOR                | 565 SQ FT              | 52 SQ M             |
| TERRACE A (Floors 7-18) | 233 SQ FT              | 22 SQ M             |
| TERRACE B (Floor 6)     | 121 SQ FT              | 11 SQ M             |
| <b>TOTAL</b>            | <b>686 - 798 SQ FT</b> | <b>63 - 74 SQ M</b> |

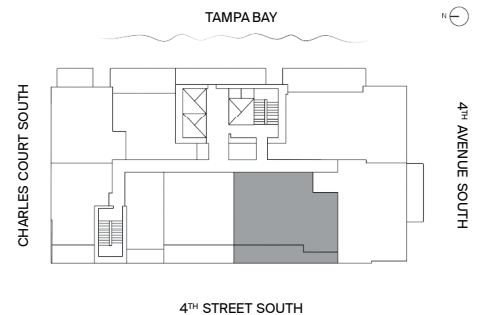
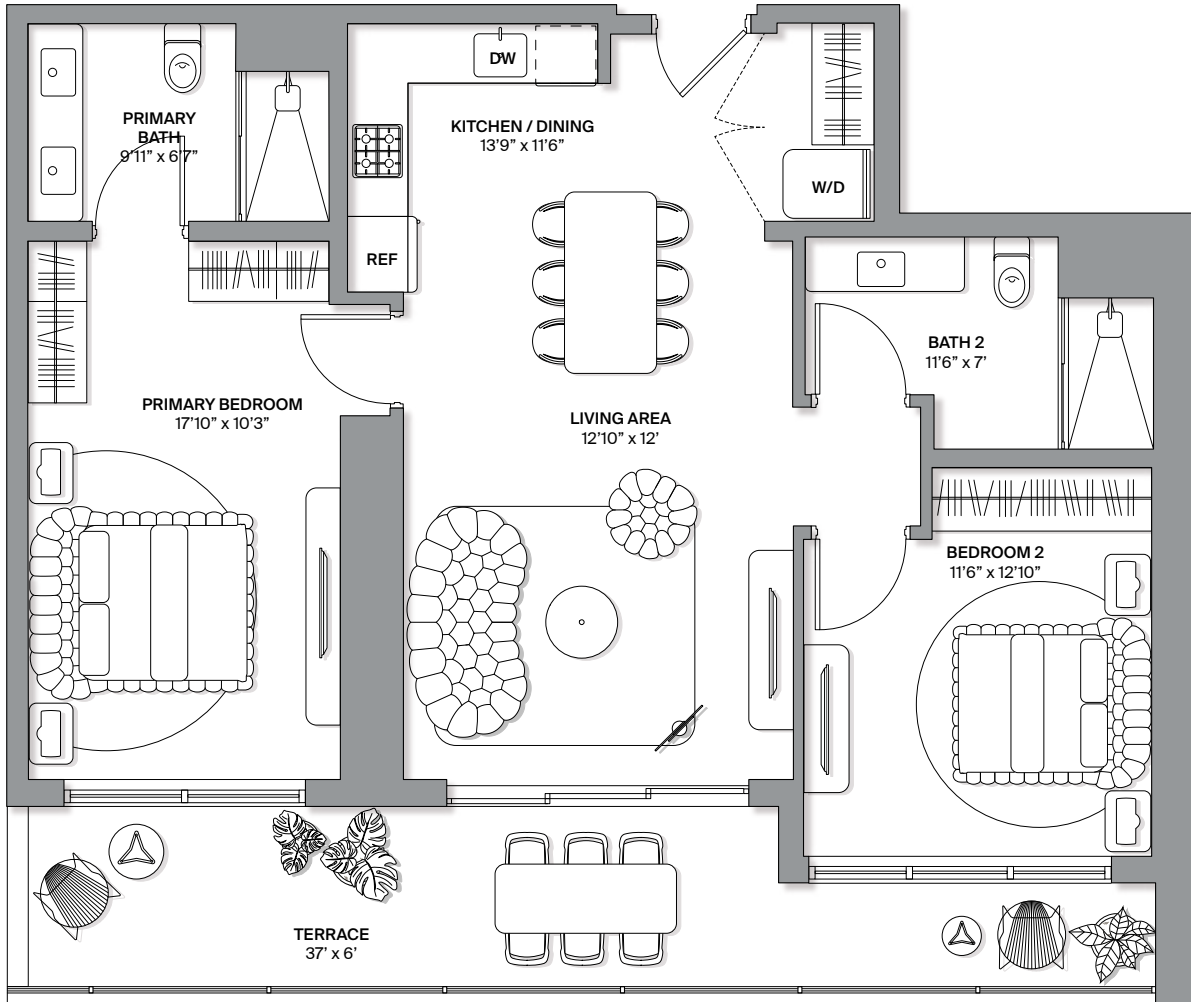
Stated dimensions are measured to the exterior boundaries of the exterior walls and the centerline of interior demising walls and in fact vary from the dimensions that would be determined by using the description and definition of the "Unit" set forth in the Declaration (which generally only includes the interior airspace between the perimeter walls and excludes interior structural components). For your reference, the area of the Unit, determined in accordance with those defined unit boundaries, is set forth in the Declaration of Condominium. Note that measurements of rooms set forth on this floor plan are generally taken at the greatest points of each given room (as if the room were a perfect rectangle), without regard for any cutouts. Accordingly, the area of the actual room will typically be smaller than the product obtained by multiplying the stated lengths times widths. All dimensions are approximate and may vary with actual construction, and all floor plans and development plans are subject to change. Roche Bobois assumes no responsibility or liability in connection with the project, and makes no representation or warranty in respect thereof. All dimensions shown are approximate and subject to construction variances and tolerances. Plans may contain variations from floor to floor and residence to residence, and are subject to change without notice. Please refer to website for all disclaimers: <https://rocheboboistower.com/legal>



|  |                            |                      |
|--|----------------------------|----------------------|
| INTERIOR   | 963 SQ FT                  | 89 SQ M              |
| TERRACE A (Floors 8, 9, 12, 16, 18, 19, 21, 23, 25)      | 127 SQ FT                  | 12 SQ M              |
| TERRACE B (Floors 7, 10, 11, 14, 15, 17, 20, 22, 24, 26) | 127 SQ FT                  | 12 SQ M              |
| TERRACE C (Floor 6)                                      | 74 SQ FT                   | 7 SQ M               |
| <b>TOTAL</b>   | <b>1,037 - 1,090 SQ FT</b> | <b>96 - 101 SQ M</b> |

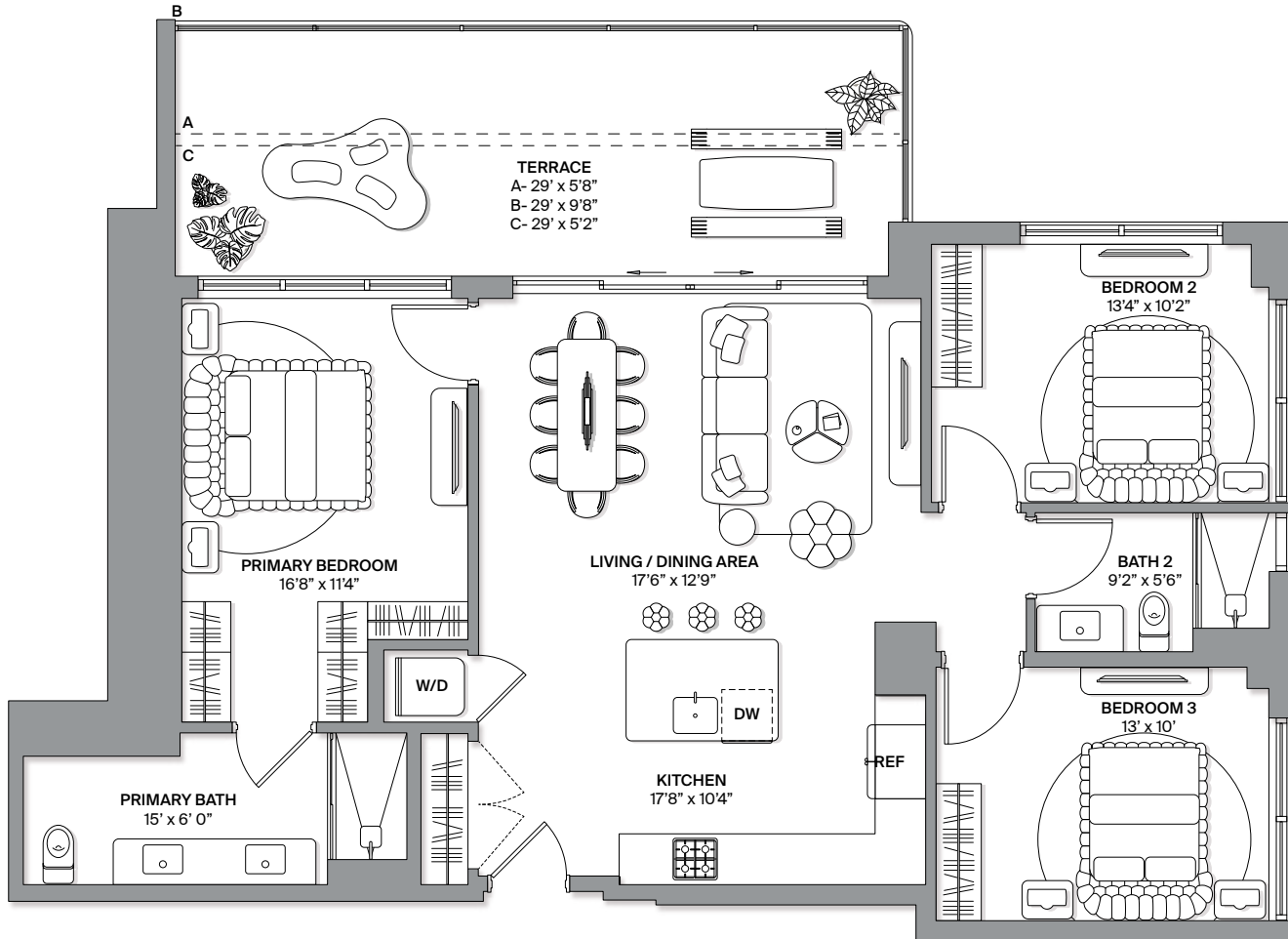


Stated dimensions are measured to the exterior boundaries of the exterior walls and the centerline of interior demising walls and in fact vary from the dimensions that would be determined by using the description and definition of the "Unit" set forth in the Declaration (which generally only includes the interior airspace between the perimeter walls and excludes interior structural components). For your reference, the area of the Unit, determined in accordance with those defined unit boundaries, is set forth in the Declaration of Condominium. Note that measurements of rooms set forth on this floor plan are generally taken at the greatest points of each given room (as if the room were a perfect rectangle), without regard for any cutouts. Accordingly, the area of the actual room will typically be smaller than the product obtained by multiplying the stated lengths times widths. All dimensions are approximate and may vary with actual construction, and all floor plans and development plans are subject to change. Roche Bobois assumes no responsibility or liability in connection with the project, and makes no representation or warranty in respect thereof. All dimensions shown are approximate and subject to construction variances and tolerances. Plans may contain variations from floor to floor and residence to residence, and are subject to change without notice. Please refer to website for all disclaimers: <https://rocheboboisstower.com/legal>

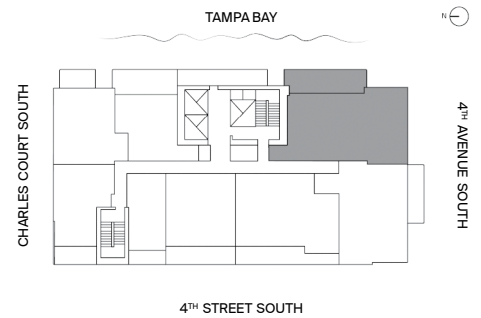


|                       |                    |                 |
|-----------------------|--------------------|-----------------|
| INTERIOR              | 981 SQ FT          | 91 SQ M         |
| TERRACE (Floors 6-26) | 213 SQ FT          | 20 SQ M         |
| <b>TOTAL</b>          | <b>1,194 SQ FT</b> | <b>111 SQ M</b> |

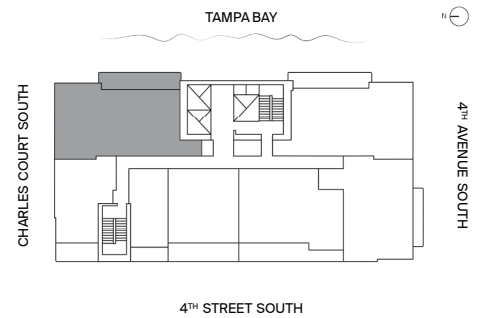
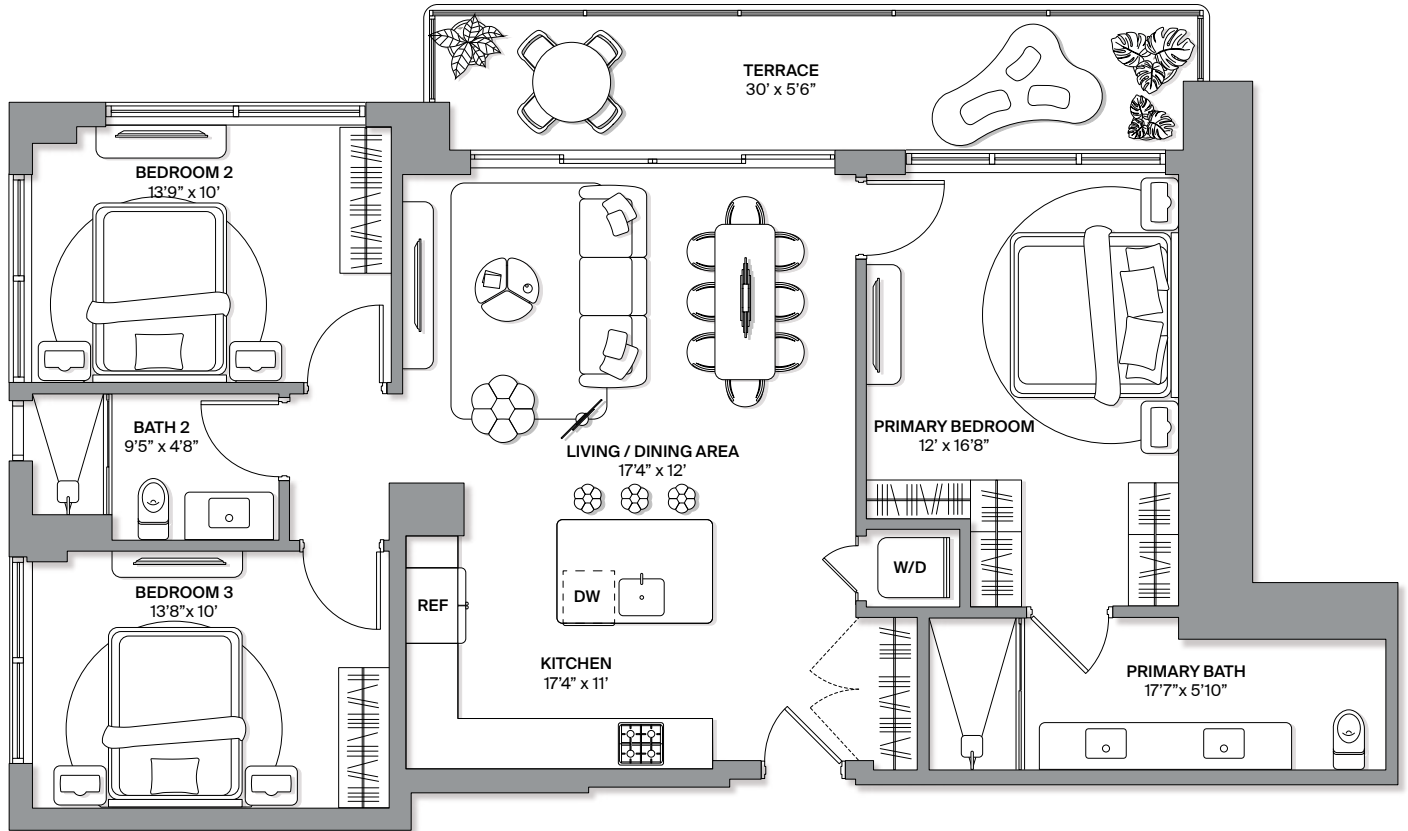
Stated dimensions are measured to the exterior boundaries of the exterior walls and the centerline of interior demising walls and in fact vary from the dimensions that would be determined by using the description and definition of the "Unit" set forth in the Declaration (which generally only includes the interior airspace between the perimeter walls and excludes interior structural components). For your reference, the area of the Unit, determined in accordance with those defined unit boundaries, is set forth in the Declaration of Condominium. Note that measurements of rooms set forth on this floor plan are generally taken at the greatest points of each given room (as if the room were a perfect rectangle), without regard for any cutouts. Accordingly, the area of the actual room will typically be smaller than the product obtained by multiplying the stated lengths times widths. All dimensions are approximate and may vary with actual construction, and all floor plans and development plans are subject to change. Roche Bobois assumes no responsibility or liability in connection with the project, and makes no representation or warranty in respect thereof. All dimensions shown are approximate and subject to construction variances and tolerances. Plans may contain variations from floor to floor and residence to residence, and are subject to change without notice. Please refer to website for all disclaimers: <https://rocheboboistower.com/legal>



|                          |                            |                       |
|--------------------------|----------------------------|-----------------------|
| INTERIOR                 | 1,170 SQ FT                | 109 SQ M              |
| TERRACE A (Floors 19-26) | 166 SQ FT                  | 15 SQ M               |
| TERRACE B (Floors 7-18)  | 292 SQ FT                  | 27 SQ M               |
| TERRACE C (Floor 6)      | 149 SQ FT                  | 14 SQ M               |
| <b>TOTAL</b>             | <b>1,319 - 1,462 SQ FT</b> | <b>123 - 136 SQ M</b> |



Stated dimensions are measured to the exterior boundaries of the exterior walls and the centerline of interior demising walls and in fact vary from the dimensions that would be determined by using the description and definition of the "Unit" set forth in the Declaration (which generally only includes the interior airspace between the perimeter walls and excludes interior structural components). For your reference, the area of the Unit, determined in accordance with those defined unit boundaries, is set forth in the Declaration of Condominium. Note that measurements of rooms set forth on this floor plan are generally taken at the greatest points of each given room (as if the room were a perfect rectangle), without regard for any cutouts. Accordingly, the area of the actual room will typically be smaller than the product obtained by multiplying the stated lengths times widths. All dimensions are approximate and may vary with actual construction, and all floor plans and development plans are subject to change. Roche Bobois assumes no responsibility or liability in connection with the project, and makes no representation or warranty in respect thereof. All dimensions shown are approximate and subject to construction variances and tolerances. Plans may contain variations from floor to floor and residence to residence, and are subject to change without notice. Please refer to website for all disclaimers: <https://rocheboboistower.com/legal>



|                        |                    |                 |
|------------------------|--------------------|-----------------|
| INTERIOR               | 1,205 SQ FT        | 112 SQ M        |
| TERRACE (Floors 19-26) | 166 SQ FT          | 15 SQ M         |
| <b>TOTAL</b>           | <b>1,371 SQ FT</b> | <b>127 SQ M</b> |

Stated dimensions are measured to the exterior boundaries of the exterior walls and the centerline of interior demising walls and in fact vary from the dimensions that would be determined by using the description and definition of the "Unit" set forth in the Declaration (which generally only includes the interior airspace between the perimeter walls and excludes interior structural components). For your reference, the area of the Unit, determined in accordance with those defined unit boundaries, is set forth in the Declaration of Condominium. Note that measurements of rooms set forth on this floor plan are generally taken at the greatest points of each given room (as if the room were a perfect rectangle), without regard for any cutouts. Accordingly, the area of the actual room will typically be smaller than the product obtained by multiplying the stated lengths times widths. All dimensions are approximate and may vary with actual construction, and all floor plans and development plans are subject to change. Roche Bobois assumes no responsibility or liability in connection with the project, and makes no representation or warranty in respect thereof. All dimensions shown are approximate and subject to construction variances and tolerances. Plans may contain variations from floor to floor and residence to residence, and are subject to change without notice. Please refer to website for all disclaimers: <https://rocheboboistower.com/legal>