

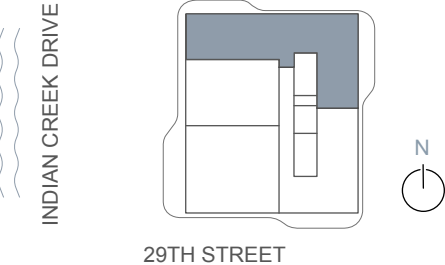
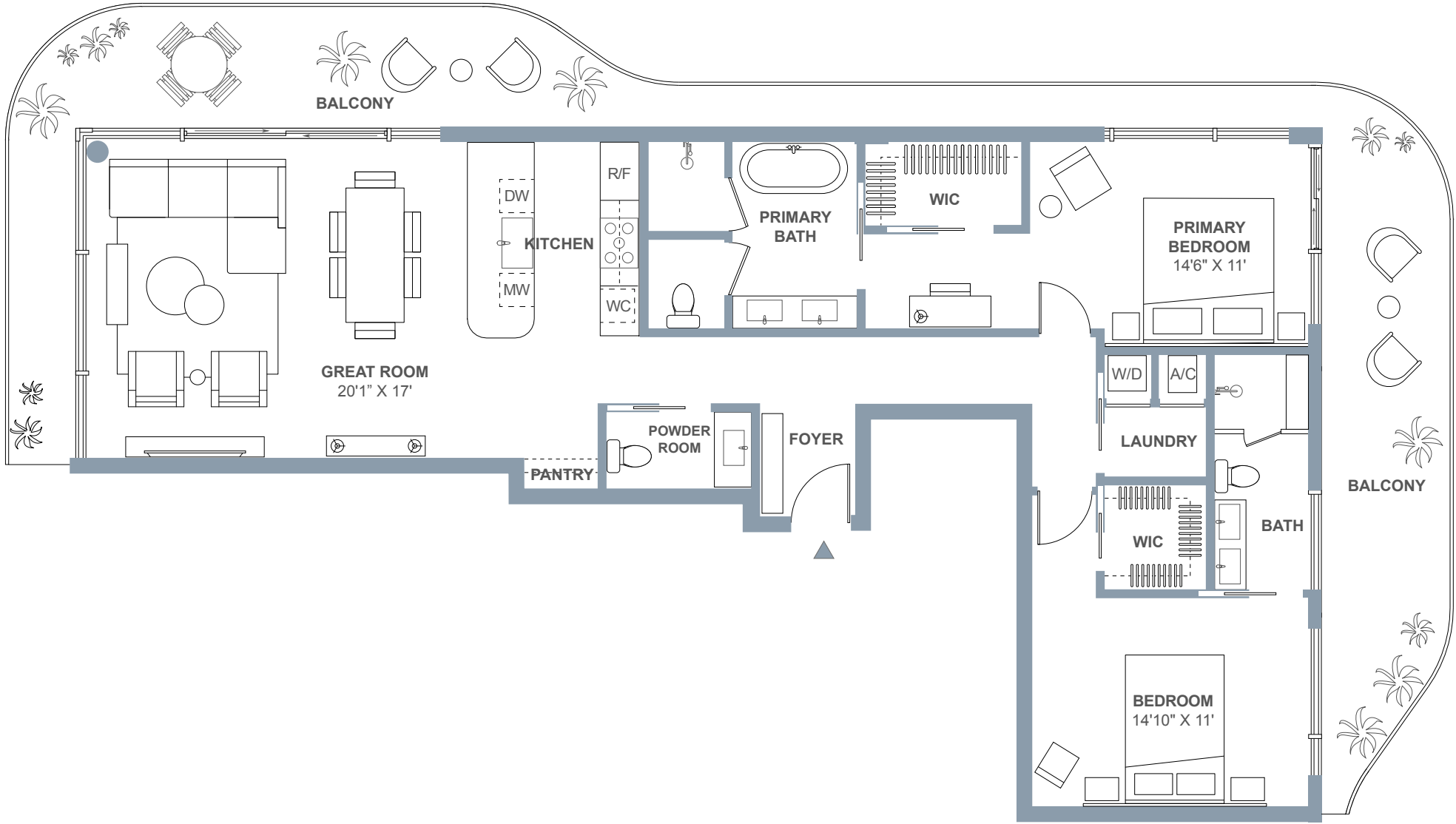
TWENTY NINE  
**INDIAN CREEK**

MIAMI BEACH

Residence 01

LEVELS 4 & 6

2 BEDROOMS	
2.5 BATHROOMS	
INTERIOR	1,452 SF   135 SQ. M
EXTERIOR	561 SF   52 SQ. M
<b>TOTAL</b>	<b>2,013 SF   187 SQ. M</b>



2901 INDIAN CREEK DRIVE, MIAMI BEACH, FLORIDA, 33140

Stated dimensions are measured to the exterior boundaries of the exterior walls and the centerline of interior demising walls and in fact vary from the dimensions that would be determined by using the description and definition of the "unit" set forth in the declaration (which generally only includes the interior airspace between the perimeter walls and excludes interior structural components). For your reference, the area of the unit, determined in accordance with those defined unit boundaries, is set forth in exhibit 3 to the declaration of the condominium. Note that measurements of rooms set forth on this floor plan are generally taken at the greatest points of each given room (as if the room were a perfect rectangle), without regard for any cutouts. Accordingly, the area of the actual room will typically be smaller than the product obtained by multiplying the stated length times width. All dimensions are approximate and may vary with actual construction, and all floor plans and development plans are subject to change.

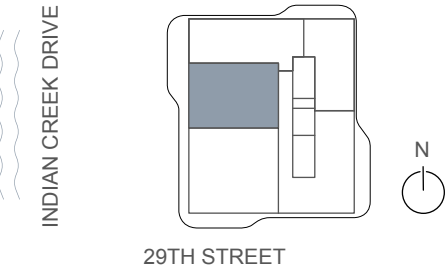
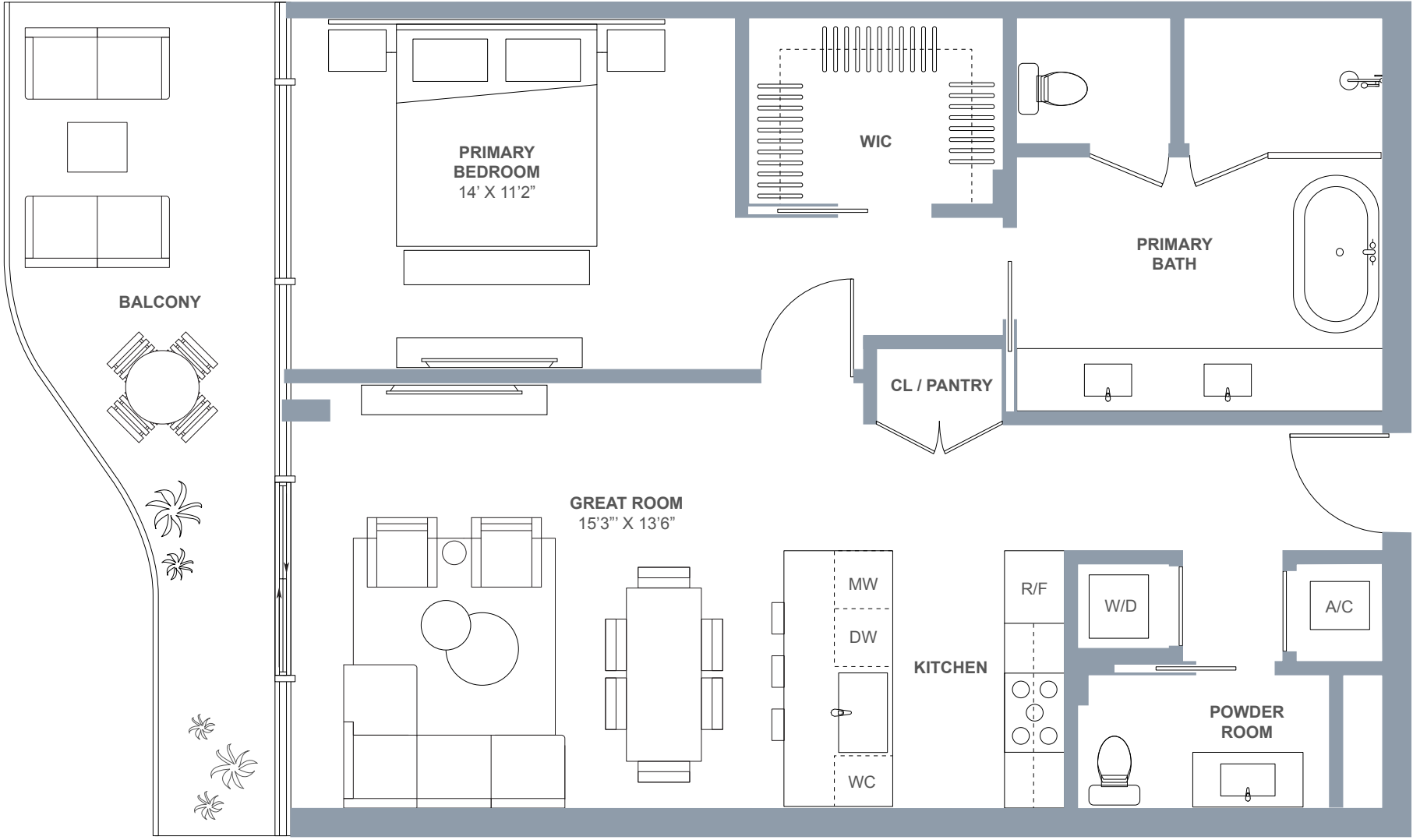
TWENTY NINE  
**INDIAN CREEK**

MIAMI BEACH

Residence 02

LEVEL 3

1 BEDROOM		
1.5 BATHROOMS		
INTERIOR	919 SF	85 SQ. M
EXTERIOR	164 SF	15 SQ. M
TOTAL	1,083 SF	100 SQ. M



2901 INDIAN CREEK DRIVE, MIAMI BEACH, FLORIDA, 33140

Stated dimensions are measured to the exterior boundaries of the exterior walls and the centerline of interior demising walls and in fact vary from the dimensions that would be determined by using the description and definition of the "unit" set forth in the declaration (which generally only includes the interior airspace between the perimeter walls and excludes interior structural components). For your reference, the area of the unit, determined in accordance with those defined unit boundaries, is set forth in exhibit 3 to the declaration of the condominium. Note that measurements of rooms set forth on this floor plan are generally taken at the greatest points of each given room (as if the room were a perfect rectangle), without regard for any cutouts. Accordingly, the area of the actual room will typically be smaller than the product obtained by multiplying the stated length times width. All dimensions are approximate and may vary with actual construction, and all floor plans and development plans are subject to change.

TWENTY NINE  
INDIAN CREEK

MIAMI BEACH

Residence 03

LEVELS 4 & 6

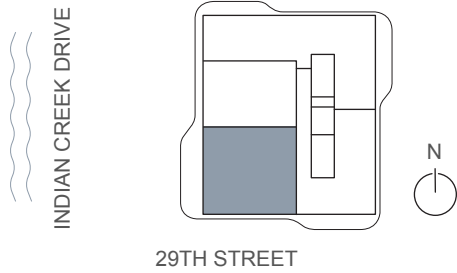
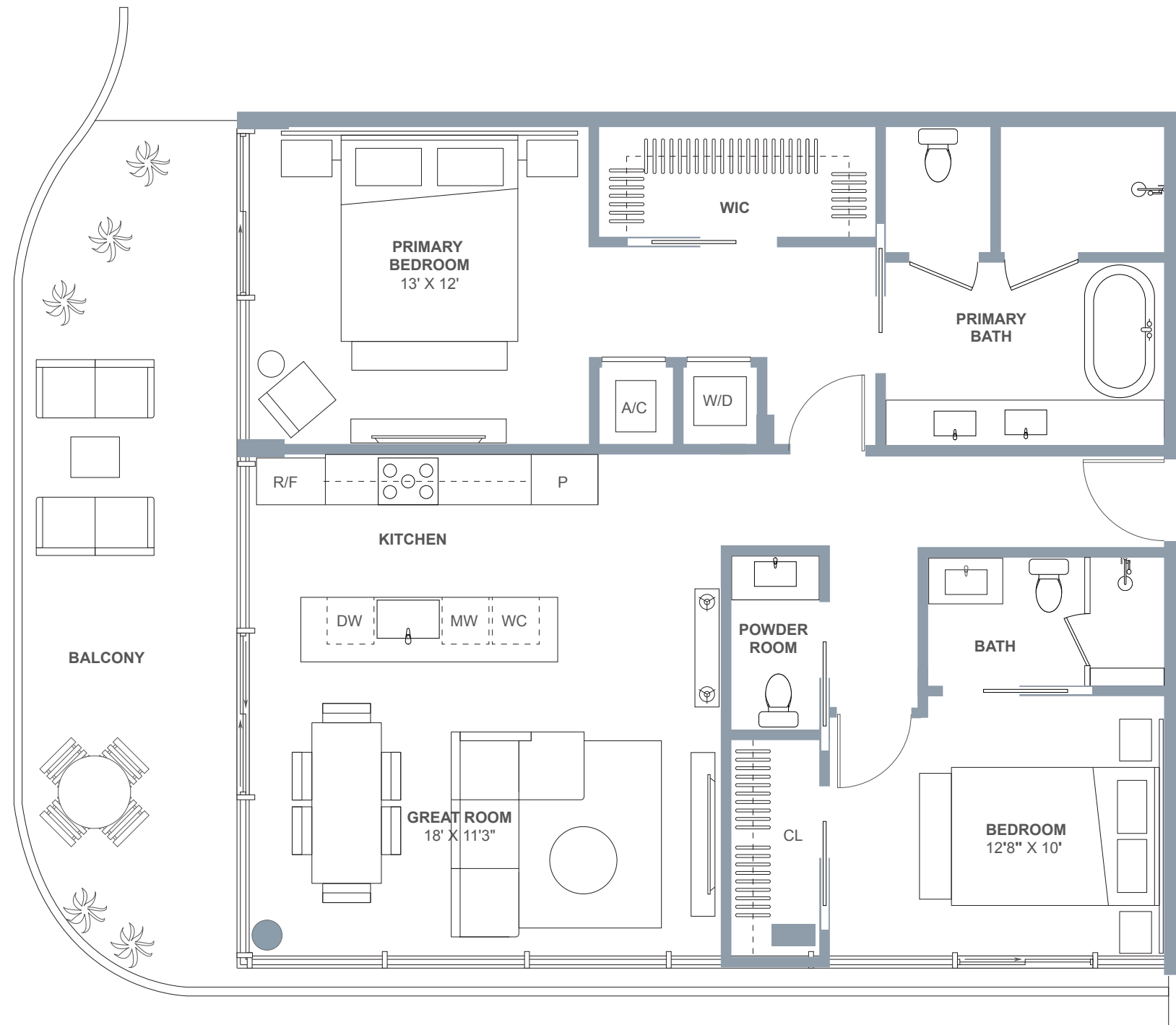
2 BEDROOMS

2.5 BATHROOMS

INTERIOR 1,155 SF | 107 SQ. M

EXTERIOR 296 SF | 27 SQ. M

TOTAL 1,451 SF | 134 SQ. M



2901 INDIAN CREEK DRIVE, MIAMI BEACH, FLORIDA, 33140

Stated dimensions are measured to the exterior boundaries of the exterior walls and the centerline of interior demising walls and in fact vary from the dimensions that would be determined by using the description and definition of the "unit" set forth in the declaration (which generally only includes the interior airspace between the perimeter walls and excludes interior structural components). For your reference, the area of the unit, determined in accordance with those defined unit boundaries, is set forth in exhibit 3 to the declaration of the condominium. Note that measurements of rooms set forth on this floor plan are generally taken at the greatest points of each given room (as if the room were a perfect rectangle), without regard for any cutouts. Accordingly, the area of the actual room will typically be smaller than the product obtained by multiplying the stated length times width. All dimensions are approximate and may vary with actual construction, and all floor plans and development plans are subject to change.

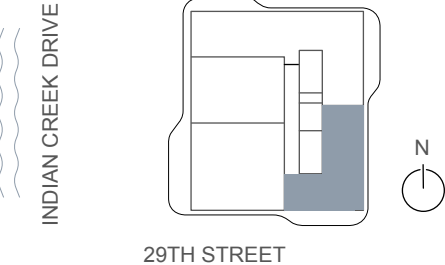
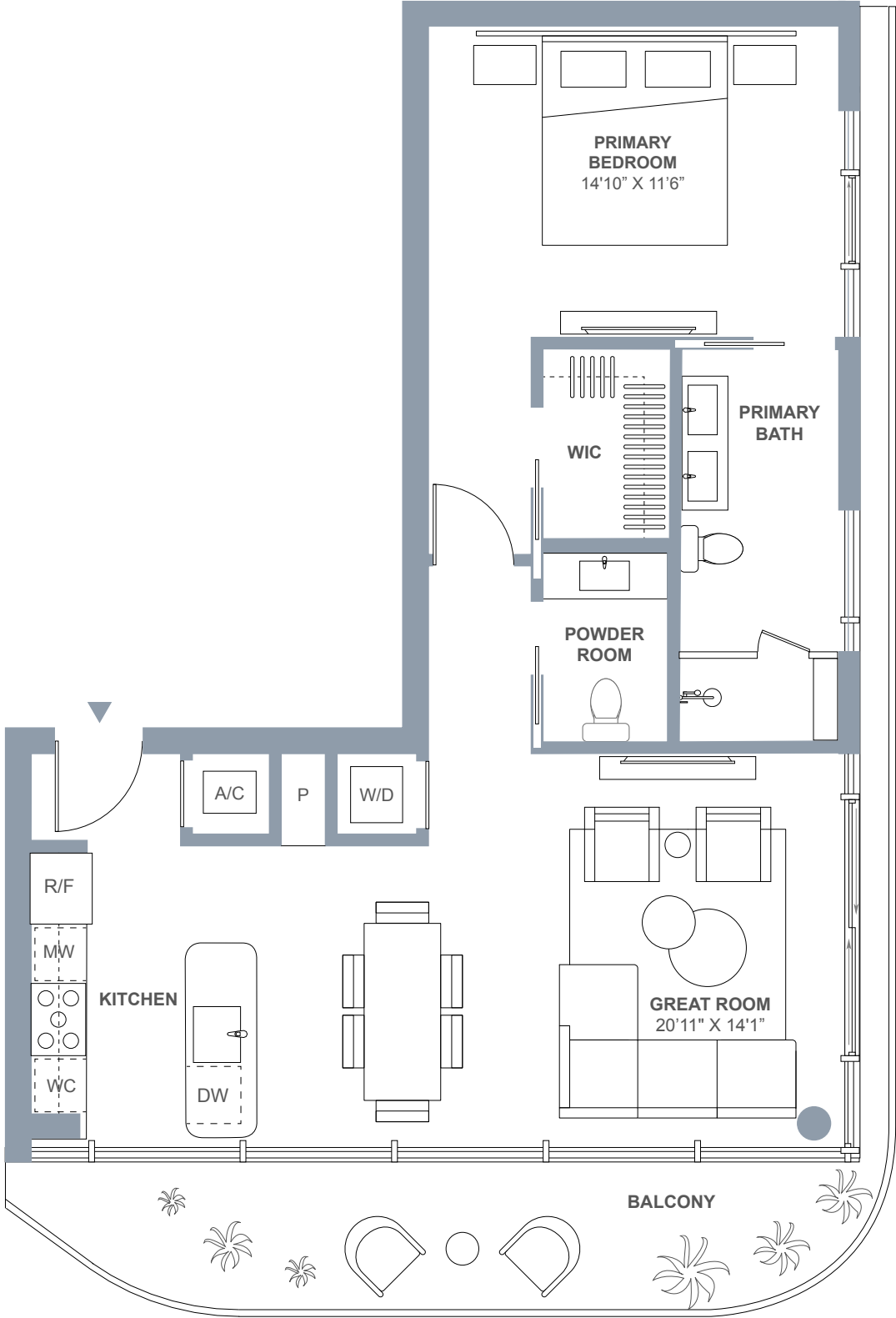
TWENTY NINE  
**INDIAN CREEK**

MIAMI BEACH

Residence 04

LEVELS 4 & 6

1 BEDROOMS		
1.5 BATHROOMS		
INTERIOR	842 SF	78 SQ. M
EXTERIOR	182 SF	17 SQ. M
TOTAL	1,024 SF	95 SQ. M



2901 INDIAN CREEK DRIVE, MIAMI BEACH, FLORIDA, 33140

Stated dimensions are measured to the exterior boundaries of the exterior walls and the centerline of interior demising walls and in fact vary from the dimensions that would be determined by using the description and definition of the "unit" set forth in the declaration (which generally only includes the interior airspace between the perimeter walls and excludes interior structural components). For your reference, the area of the unit, determined in accordance with those defined unit boundaries, is set forth in exhibit 3 to the declaration of the condominium. Note that measurements of rooms set forth on this floor plan are generally taken at the greatest points of each given room (as if the room were a perfect rectangle), without regard for any cutouts. Accordingly, the area of the actual room will typically be smaller than the product obtained by multiplying the stated length times width. All dimensions are approximate and may vary with actual construction, and all floor plans and development plans are subject to change.