

TREVOR FONTAINE — & ASSOCIATES

Meet Trevor — Whether you're buying or selling in Toronto and the GTA, you need more than an agent—you need a strategic partner. For well over a decade, I've delivered proven results by combining deep market knowledge with a straightforward, client-first approach. My team and I don't just facilitate transactions; we build tailored strategies to ensure your experience is seamless, successful, and stress-free. Partner with a trusted advisor who invests in the same market you do. Let's achieve your real estate goals together.

Buying With Us — Navigating the Toronto and GTA market requires a guide with firsthand experience and unwavering dedication. As a long-time personal real estate investor and advisor, I offer clients an intimate understanding of the market that goes beyond the listings. My team and I act as your ultimate advocates, providing attentive service and clear advice from the first showing to the final negotiation. We are committed to making your buying experience informative and stress-free, ensuring you find the perfect property on the best possible terms. Let's start your search with a trusted expert on your side.

Selling With Us — When it's time to sell your property, you deserve a team that combines expert marketing with masterful negotiation. With over a decade of success in Toronto and the GTA, I have a proven track record of securing exceptional results for my clients. My team and I create a customized strategy for every property, leveraging deep market insights and a vast network to attract the right buyers. We handle the complexities so you can focus on your next chapter with confidence. Let's discuss how we can maximize the value of your investment.

Trevor Fontaine, Sr Vice President, Sales
Sotheby's International Realty Canada

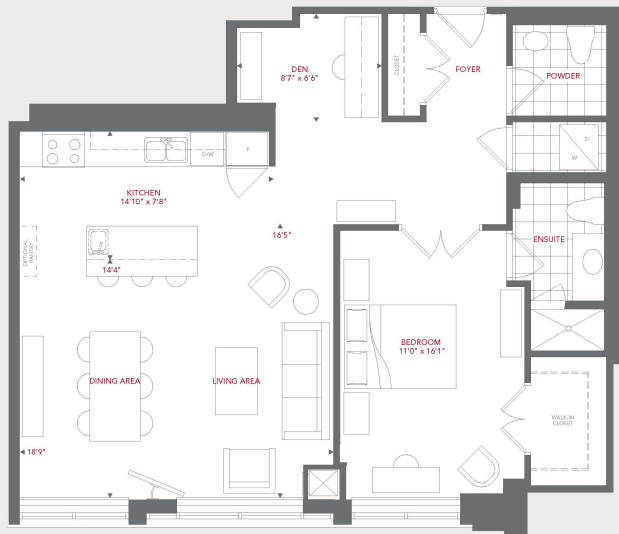
email: tfontaine@sothebysrealty.ca

Sotheby's | **Canada**
INTERNATIONAL REALTY



SCHOOLHOUSE
— Inspired Living in The Annex —

Sizes and specifications are subject to change without notice. E. & O.E. Actual useable space may vary from any stated floor area. All dimensions are approximate and are subject to normal construction variances. Measurement of rooms set forth on any plan may be taken at the widest points of each given room (as if the room were a perfect rectangle), without regard for any cutouts.



THE DARTMOUTH

— SUITE 203 —

ONE BEDROOM + DEN

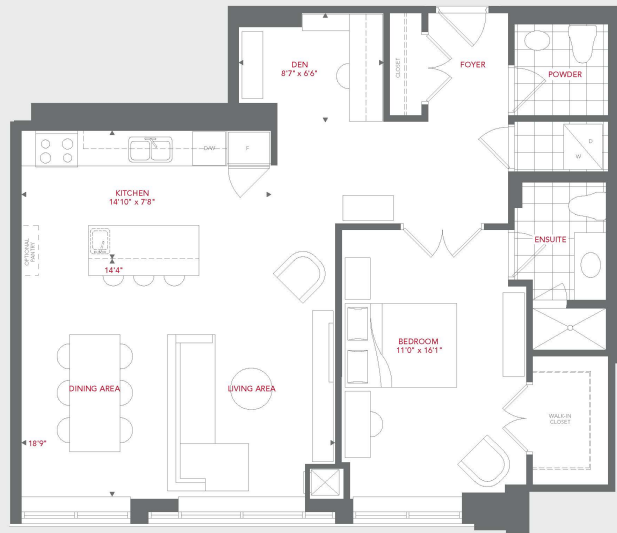
INTERIOR
1,032 SQ.FT.






SCHOOLHOUSE
— Inspired Living in The Annex —

Sizes and specifications are subject to change without notice. E. & O.E. Actual useable space may vary from any stated floor area. All dimensions are approximate and are subject to normal construction variances. Measurement of rooms set forth on any plan may be taken at the widest points of each given room (as if the room were a perfect rectangle), without regard for any cutouts.






**THE
NOTRE DAME**


— SUITE 303 —

ONE BEDROOM + DEN

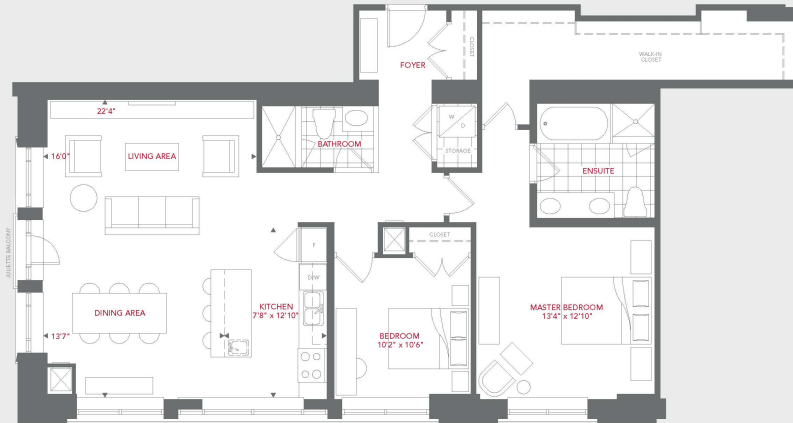
INTERIOR
1,032 SQ.FT.

N





Sizes and specifications are subject to change without notice. E. & O.E. Actual useable space may vary from any stated floor area. All dimensions are approximate and are subject to normal construction variances. Measurement of rooms set forth on any plan may be taken at the widest points of each given room (as if the room were a perfect rectangle), without regard for any cutouts.

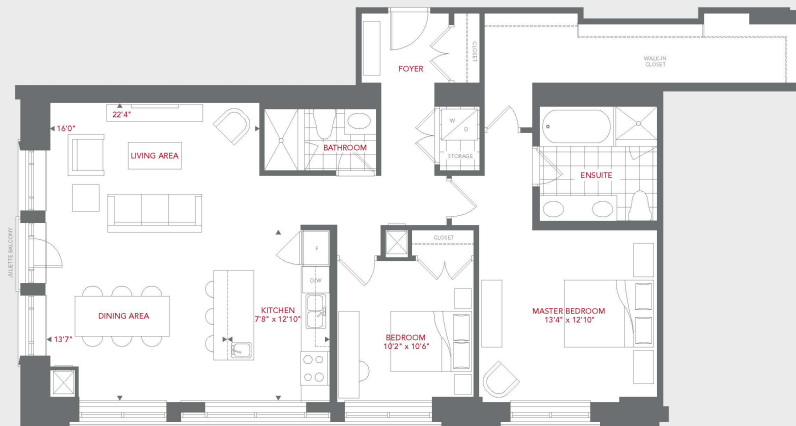


THE
QUEEN'S
 — SUITE 204 —
 TWO BEDROOM
 INTERIOR
 1,393 SQ.FT.



SCHOOLHOUSE
 — Inspired Living in The Annex —

Sizes and specifications are subject to change without notice. E. & O.E. Actual useable space may vary from any stated floor area. All dimensions are approximate and are subject to normal construction variances. Measurement of rooms set forth on any plan may be taken at the widest points of each given room (as if the room were a perfect rectangle), without regard for any cutouts.



THE IMPERIAL

— SUITE 304 —

TWO BEDROOM

INTERIOR
1,393 SQ.FT.



SCHOOLHOUSE
— Inspired Living in The Annex —

Sizes and specifications are subject to change without notice. E. & O.E. Actual useable space may vary from any stated floor area. All dimensions are approximate and are subject to normal construction variances. Measurement of rooms set forth on any plan may be taken at the widest points of each given room (as if the room were a perfect rectangle), without regard for any cutouts.



THE COLUMBIA

— SUITE 201 —
TWO BEDROOM

INTERIOR
1,408 SQ.FT.

EXTERIOR
144 SQ.FT.



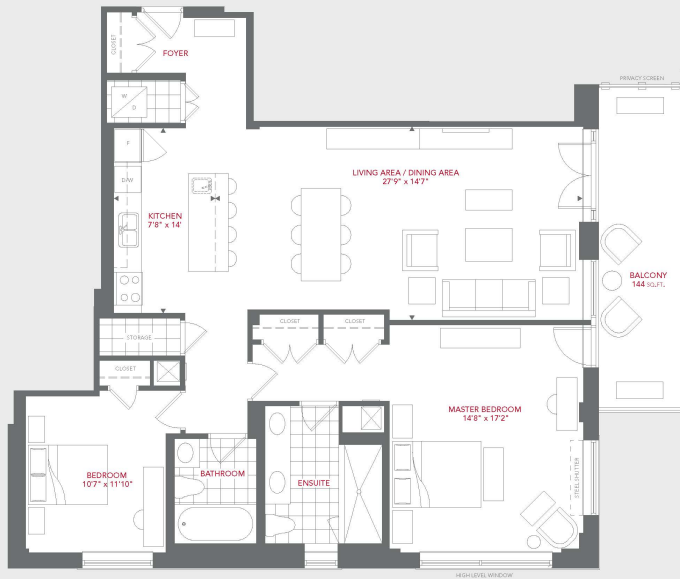
SCHOOLHOUSE
— Inspired Living in The Annex —

Sizes and specifications are subject to change without notice. E. & O.E. Actual useable space may vary from any stated floor area. All dimensions are approximate and are subject to normal construction variances. Measurement of rooms set forth on any plan may be taken at the widest points of each given room (as if the room were a perfect rectangle), without regard for any cutouts.



SCHOOLHOUSE
— Inspired Living in The Annex —

Sizes and specifications are subject to change without notice. E. & O.E. Actual useable space may vary from any stated floor area. All dimensions are approximate and are subject to normal construction variances. Measurement of rooms set forth on any plan may be taken at the widest points of each given room (as if the room were a perfect rectangle), without regard for any cutouts.



**THE
U OF T**

— SUITE 302 —
TWO BEDROOM

INTERIOR
1,460 SQ.FT.

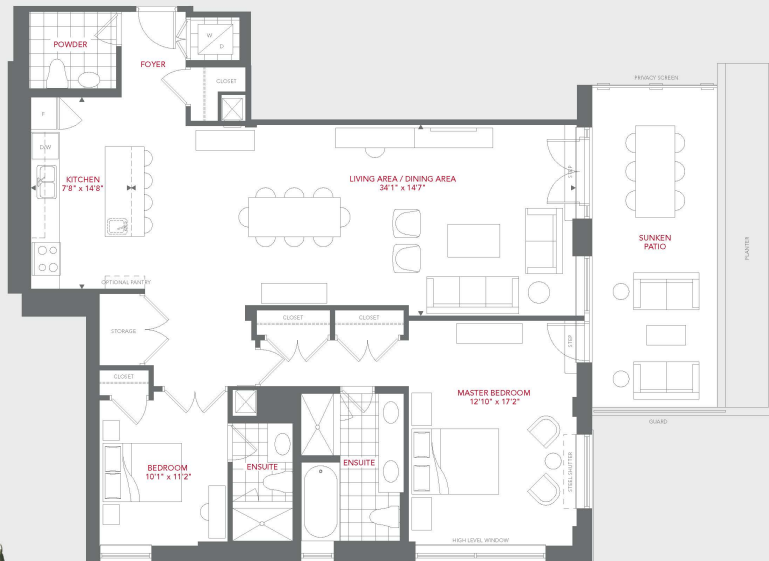
EXTERIOR
144 SQ.FT.





SCHOOLHOUSE
— Inspired Living in The Annex —

Sizes and specifications are subject to change without notice. E. & C.E. Actual useable space may vary from any stated floor area. All dimensions are approximate and are subject to normal construction variances. Measurement of rooms set forth on any plan may be taken at the widest points of each given room (as if the room were a perfect rectangle), without regard for any cutouts.



THE CORNELL

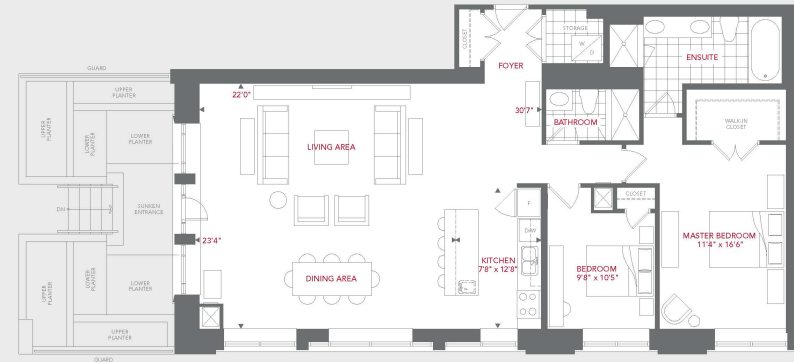
— SUITE 102 —


TWO BEDROOM

INTERIOR
1,538 SQ.FT.

EXTERIOR
318 SQ.FT.









THE BROWN

— SUITE 103 —

TWO BEDROOM

INTERIOR
1,574 SQ.FT.



SCHOOLHOUSE
— Inspired Living in The Annex —

Sizes and specifications are subject to change without notice. E. & D.E. Actual useable space may vary from any stated floor area. All dimensions are approximate and are subject to normal construction variances. Measurement of rooms set forth on any plan may be taken at the widest points of each given room (as if the room were a perfect rectangle), without regard for any outcots.

PRIVACY SCREEN

PLANTER ROOM

TERRACE ROOF BELOW

ROOF TOP TERRACE AT 5TH 602 SQ. FT. (INCLUDING TWO VINYL PLANTERS)

DEN 18'3" x 12'8"

BEDROOM 14'4" x 8'4"

BATHROOM

PRIVACY SCREEN

The floor plan for the 1442 UFS unit includes the following areas and features:

- TERRACE AT 4th 220 SQ.FT.**: Located at the front left, featuring a large circular table and chairs, and a privacy screen.
- KITCHEN 16'3" x 7'8"**: Includes a sink, stove, refrigerator, and a breakfast bar with two stools.
- LIVING AREA / DINING AREA 18'11" x 14'9"**: Features a large rectangular dining table, a sofa, and armchairs.
- FOYER**: Entry area with a coat closet and a storage closet.
- POWDER**: A small bathroom located near the foyer.
- MASTER BEDROOM 10'5" x 16'2"**: Includes a large bed, a dresser, and a closet.
- ENSUITE**: A bathroom attached to the master bedroom.
- WALK-IN CLOSET**: Located between the master bedroom and the powder room.
- STAIRS**: Up and down stairs are located near the foyer.
- STORAGE**: Multiple storage areas are indicated throughout the unit.
- ENTRY 1442 UFS**: The main entrance to the unit.



Sizes and specifications are subject to change without notice. E. & O.E. Actual useable space may vary from any stated floor area. All dimensions are approximate and are subject to normal construction variances. Measurement of rooms set forth on any plan may be taken at the widest points of each given room (as if the room were a perfect rectangle), without regard for any outcrops.



— PENTHOUSE IV —

INTERIOR
1,637 SQ.FT.

EXTERIOR
822 SQ.FT. TOTAL



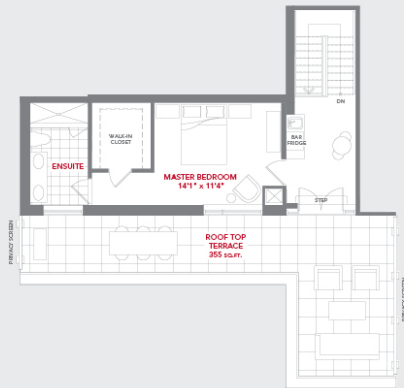
UPPER LEVEL



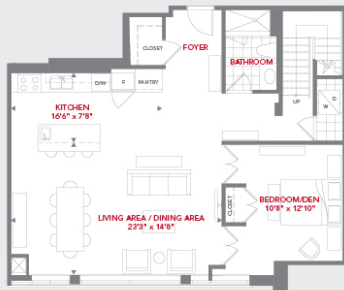
LOWER LEVEL



UPPER LEVEL
INTERIOR
577 SQ.FT.



LOWER LEVEL
INTERIOR
1,061 SQ.FT.



SCHOOLHOUSE
— Inspired Living in The Annex —

Sizes and specifications are subject to change without notice. E & O.E. Actual usable space may vary from any stated floor area. All dimensions are approximate and are subject to normal construction variances. Measurement of rooms set forth on any plan may be taken at the widest points of each given room (as if the room were a perfect rectangle), without regard for any alcove.



THE HARVARD

— PENTHOUSE III —

TWO BEDROOM OR
ONE BEDROOM + DEN

INTERIOR
1,638 SQ.FT.

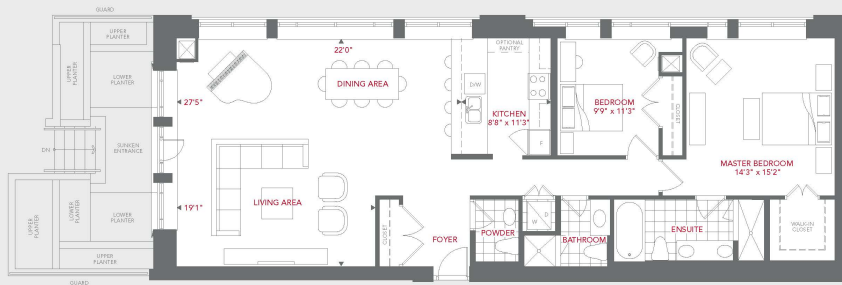
EXTERIOR
355 SQ.FT.





SCHOOLHOUSE
— Inspired Living in The Annex —

Sizes and specifications are subject to change without notice. E. & O.E. Actual useable space may vary from any stated floor area. All dimensions are approximate and are subject to normal construction variances. Measurement of rooms set forth on any plan may be taken at the widest points of each given room (as if the rooms were a perfect rectangle), without regard for any outcuts.



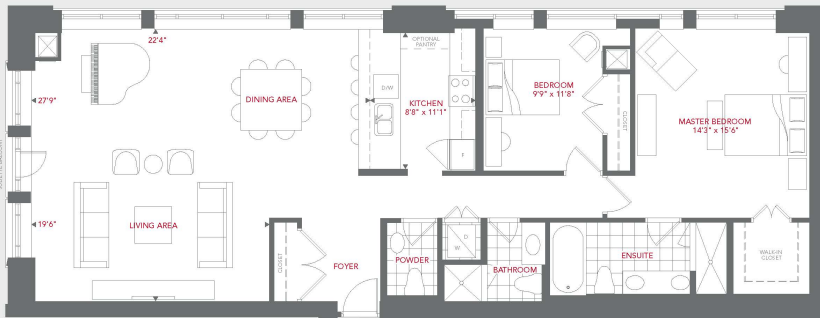
THE BERKELEY

— SUITE 104 —

TWO BEDROOM

INTERIOR
1,673 SQ.FT.





THE MCGILL

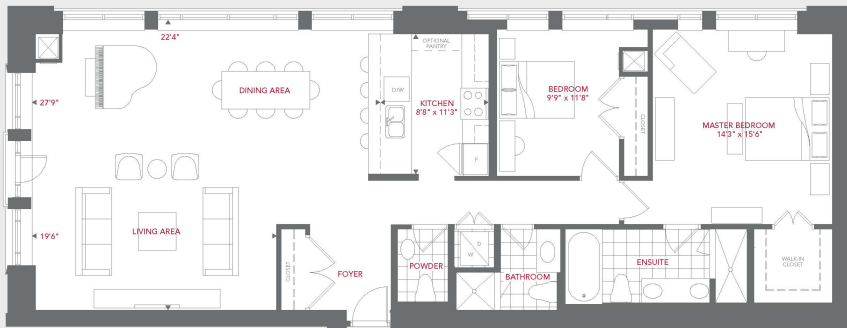
— SUITE 205 —
TWO BEDROOM

INTERIOR
1,680 SQ.FT.



SCHOOLHOUSE
— Inspired Living in The Annex —

Sizes and specifications are subject to change without notice. E. & O.E. Actual useable space may vary from any stated floor area. All dimensions are approximate and are subject to normal construction variances. Measurement of rooms set forth on any plan may be taken at the widest points of each given room (as if the room were a perfect rectangle), without regard for any cutouts.



THE VASSAR

— SUITE 305 —
TWO BEDROOM

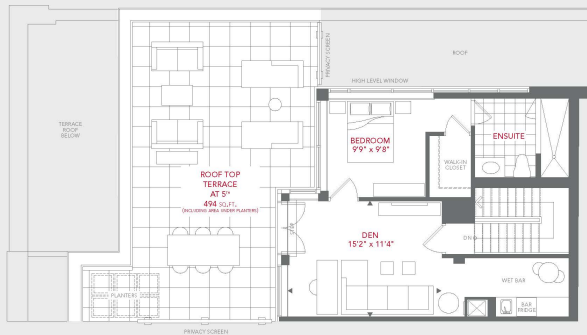
INTERIOR
1,680 SQ.FT.



SCHOOLHOUSE
— Inspired Living in The Annex —

Sizes and specifications are subject to change without notice. E. & O.E. Actual useable space may vary from any stated floor area. All dimensions are approximate and are subject to normal construction variances. Measurement of rooms set forth on any plan may be taken at the widest points of each given room (as if the room were a perfect rectangle), without regard for any cutouts.

UPPER LEVEL
INTERIOR
641 SQ.FT.



LOWER LEVEL
INTERIOR
1,407 SQ.FT.



THE
YALE
— PENTHOUSE V —
TWO BEDROOM + DEN

INTERIOR
2,048 SQ.FT.

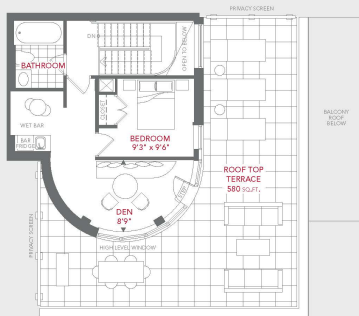
EXTERIOR
714 SQ.FT. TOTAL



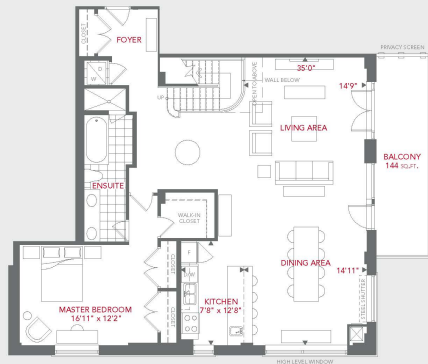
SCHOOLHOUSE
— Inspired Living in The Annex —

Sizes and specifications are subject to change without notice. E. & O.E. Actual useable space may vary from any stated floor area. All dimensions are approximate and are subject to normal construction variances. Measurement of rooms set forth on any plan may be taken at the widest points of each given room (as if the rooms were a perfect rectangle), without regard for any outcrops.

UPPER LEVEL
INTERIOR
568 SQ.FT.



LOWER LEVEL
INTERIOR
1,503 SQ.FT.



SCHOOLHOUSE
— Inspired Living in The Annex —

Sizes and specifications are subject to change without notice. E. & O.E. Actual useable space may vary from any stated floor area. All dimensions are approximate and are subject to normal construction variances. Measurement of rooms set forth on any plan may be taken at the widest points of each given room (as if the room were a perfect rectangle), without regard for any outcrops.



THE STANFORD

— PENTHOUSE II —

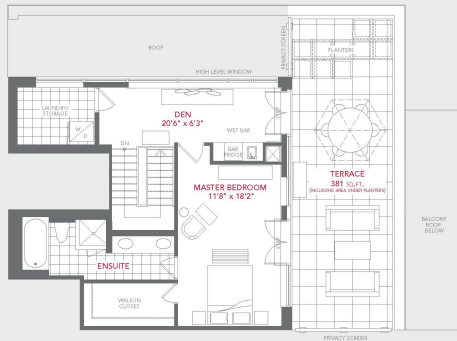
TWO BEDROOM + DEN

INTERIOR
2,071 SQ.FT.

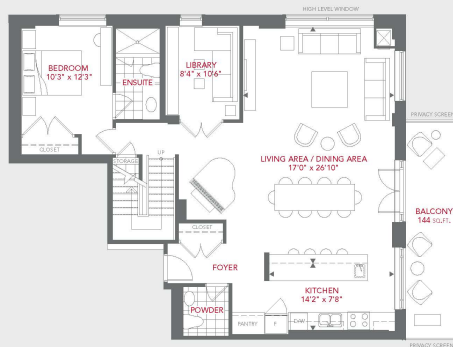
EXTERIOR
724 SQ.FT. TOTAL



UPPER LEVEL
INTERIOR
763 SQ.FT.



LOWER LEVEL
INTERIOR
1,329 SQ.FT.



SCHOOLHOUSE
— Inspired Living in The Annex —

Sizes and specifications are subject to change without notice. E. & O.E. Actual useable space may vary from any stated floor area. All dimensions are approximate and are subject to normal construction variances. Measurement of rooms set forth on any plan may be taken at the widest points of each given room (as if the rooms were a perfect rectangle), without regard for any outliers.



THE OXFORD

— PENTHOUSE I —

TWO BEDROOM + LIBRARY

INTERIOR
2,092 SQ.FT.

EXTERIOR
525 SQ.FT. TOTAL

