

TREVOR FONTAINE — & ASSOCIATES

Meet Trevor — Whether you're buying or selling in Toronto and the GTA, you need more than an agent—you need a strategic partner. For well over a decade, I've delivered proven results by combining deep market knowledge with a straightforward, client-first approach. My team and I don't just facilitate transactions; we build tailored strategies to ensure your experience is seamless, successful, and stress-free. Partner with a trusted advisor who invests in the same market you do. Let's achieve your real estate goals together.

Buying With Us — Navigating the Toronto and GTA market requires a guide with firsthand experience and unwavering dedication. As a long-time personal real estate investor and advisor, I offer clients an intimate understanding of the market that goes beyond the listings. My team and I act as your ultimate advocates, providing attentive service and clear advice from the first showing to the final negotiation. We are committed to making your buying experience informative and stress-free, ensuring you find the perfect property on the best possible terms. Let's start your search with a trusted expert on your side.

Selling With Us — When it's time to sell your property, you deserve a team that combines expert marketing with masterful negotiation. With over a decade of success in Toronto and the GTA, I have a proven track record of securing exceptional results for my clients. My team and I create a customized strategy for every property, leveraging deep market insights and a vast network to attract the right buyers. We handle the complexities so you can focus on your next chapter with confidence. Let's discuss how we can maximize the value of your investment.

Trevor Fontaine, Sr Vice President, Sales
Sotheby's International Realty Canada

email: tfontaine@sothebysrealty.ca

Sotheby's | **Canada**
INTERNATIONAL REALTY

Half Floor North: Eleventh Floor

SUITE: 1605 SQUARE FEET /// TERRACE: 117 SQUARE FEET /// TOTAL: 1722 SQUARE FEET

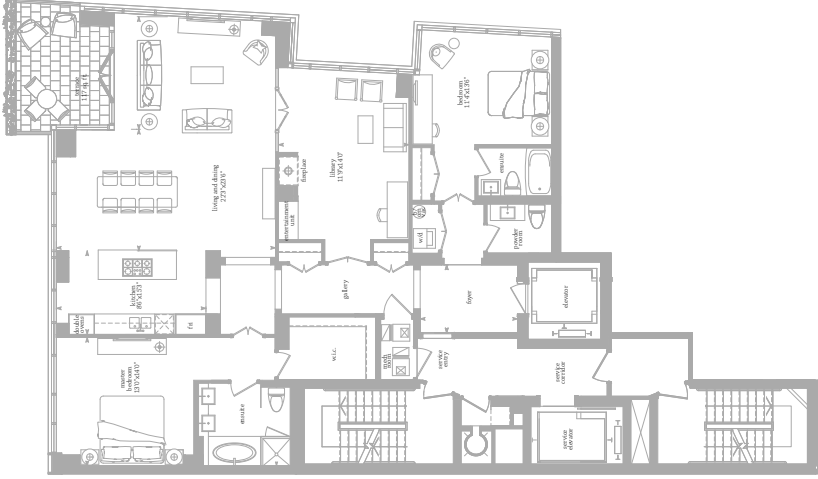


*SUITE SHOWN ELEVENTH FLOOR.

Sizes and specifications subject to change without notice. E. & O.E.

Half Floor North: Typical Suite.
SUITE: 1942 SQUARE FEET/// TERRACE: 117 SQUARE FEET/// TOTAL: 2059 SQUARE FEET

SUITE: 1942 SQUARE FEET/// TERRACE: 117 SQUARE FEET/// TOTAL: 2059 SQUARE FEET



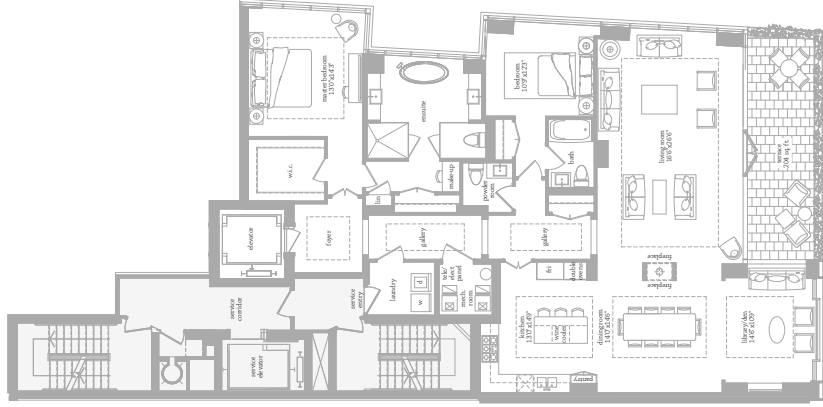
Sizes and specifications subject to change without notice. E. & O.E.



*SUITE SHOWN FOURTH TO TENTH LEVEL.

Half Floor South: Typical Suite.

SUITE: 2206 SQUARE FEET /// TERRACE: 204 SQUARE FEET /// TOTAL: 2410 SQUARE FEET

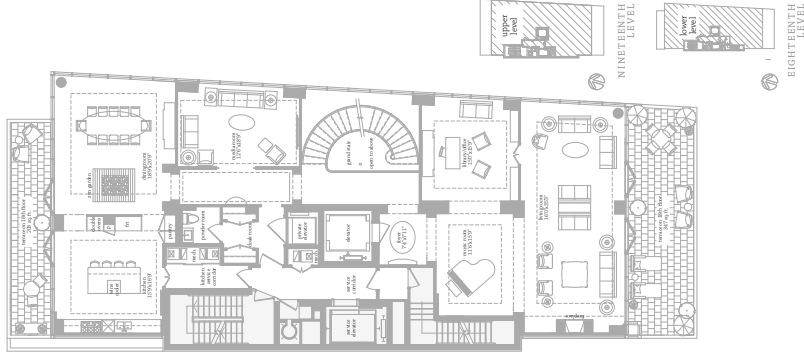
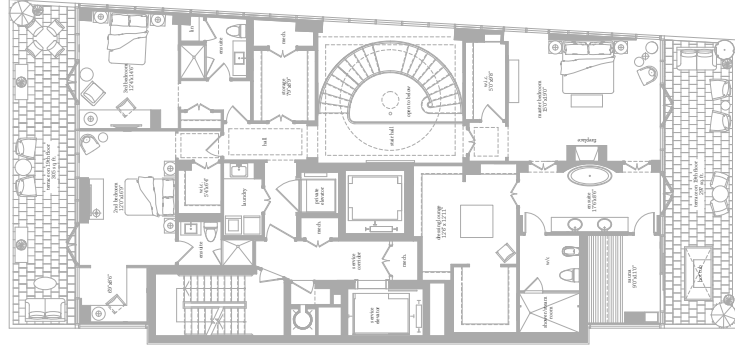


*SUITE SHOWN FOURTH TO TENTH LEVEL.

Sizes and specifications subject to change without notice. E. & O.E.

The One-of-a-Kind Penthouse: Eighteenth & Nineteenth Floors.

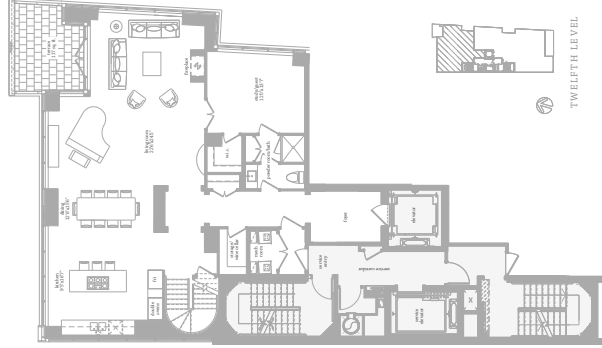
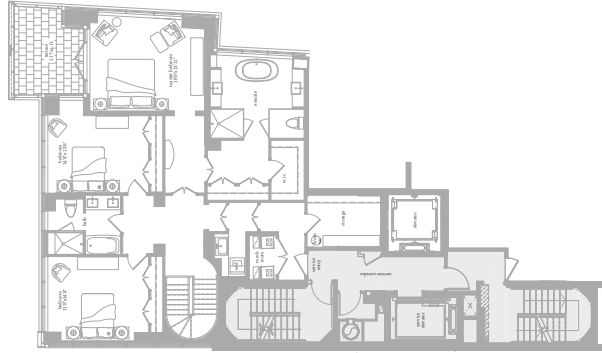
EIGHTEENTH FLOOR/// SUITE: 3046 SQUARE FEET/// TERRACE: 550 SQUARE FEET/// TOTAL: 3596 SQUARE FEET
 NINETEENTH FLOOR/// SUITE: 2572 SQUARE FEET/// TERRACE: 602 SQUARE FEET/// TOTAL: 3174 SQUARE FEET
 PENTHOUSE/// SUITE: 5618 SQUARE FEET/// TERRACES: 1152 SQUARE FEET/// TOTAL: 6770 SQUARE FEET



Sizes and specifications subject to change without notice. E. & O.E.

Two Floor North: Typical Suite.

SUITE: 3210 SQUARE FEET /// TERRACE: 234 SQUARE FEET /// TOTAL: 3444 SQUARE FEET



TWELFTH LEVEL

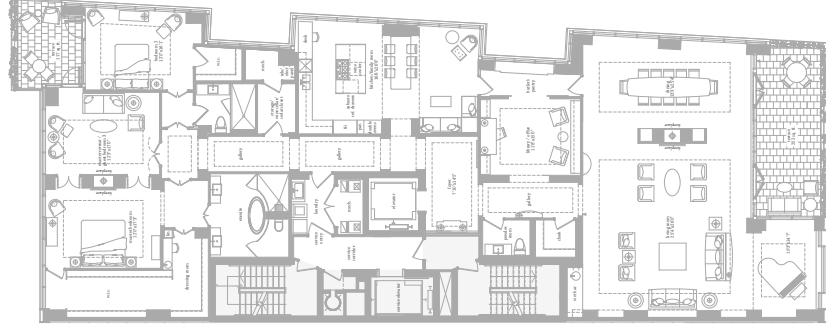


THIRTEENTH LEVEL

Sizes and specifications subject to change without notice. E. & O.E.

Full Floor: Typical Suite.

SUITE: 4276 SQUARE FEET /// TERRACE: 369 SQUARE FEET /// TOTAL: 4645 SQUARE FEET



* SUITE SHOWN FOURTEENTH
TO SIXTEENTH LEVEL.

Sizes and specifications subject to change without notice. E. & O.E.