

TREVOR FONTAINE — & ASSOCIATES

Meet Trevor — Whether you're buying or selling in Toronto and the GTA, you need more than an agent—you need a strategic partner. For well over a decade, I've delivered proven results by combining deep market knowledge with a straightforward, client-first approach. My team and I don't just facilitate transactions; we build tailored strategies to ensure your experience is seamless, successful, and stress-free. Partner with a trusted advisor who invests in the same market you do. Let's achieve your real estate goals together.

Buying With Us — Navigating the Toronto and GTA market requires a guide with firsthand experience and unwavering dedication. As a long-time personal real estate investor and advisor, I offer clients an intimate understanding of the market that goes beyond the listings. My team and I act as your ultimate advocates, providing attentive service and clear advice from the first showing to the final negotiation. We are committed to making your buying experience informative and stress-free, ensuring you find the perfect property on the best possible terms. Let's start your search with a trusted expert on your side.

Selling With Us — When it's time to sell your property, you deserve a team that combines expert marketing with masterful negotiation. With over a decade of success in Toronto and the GTA, I have a proven track record of securing exceptional results for my clients. My team and I create a customized strategy for every property, leveraging deep market insights and a vast network to attract the right buyers. We handle the complexities so you can focus on your next chapter with confidence. Let's discuss how we can maximize the value of your investment.

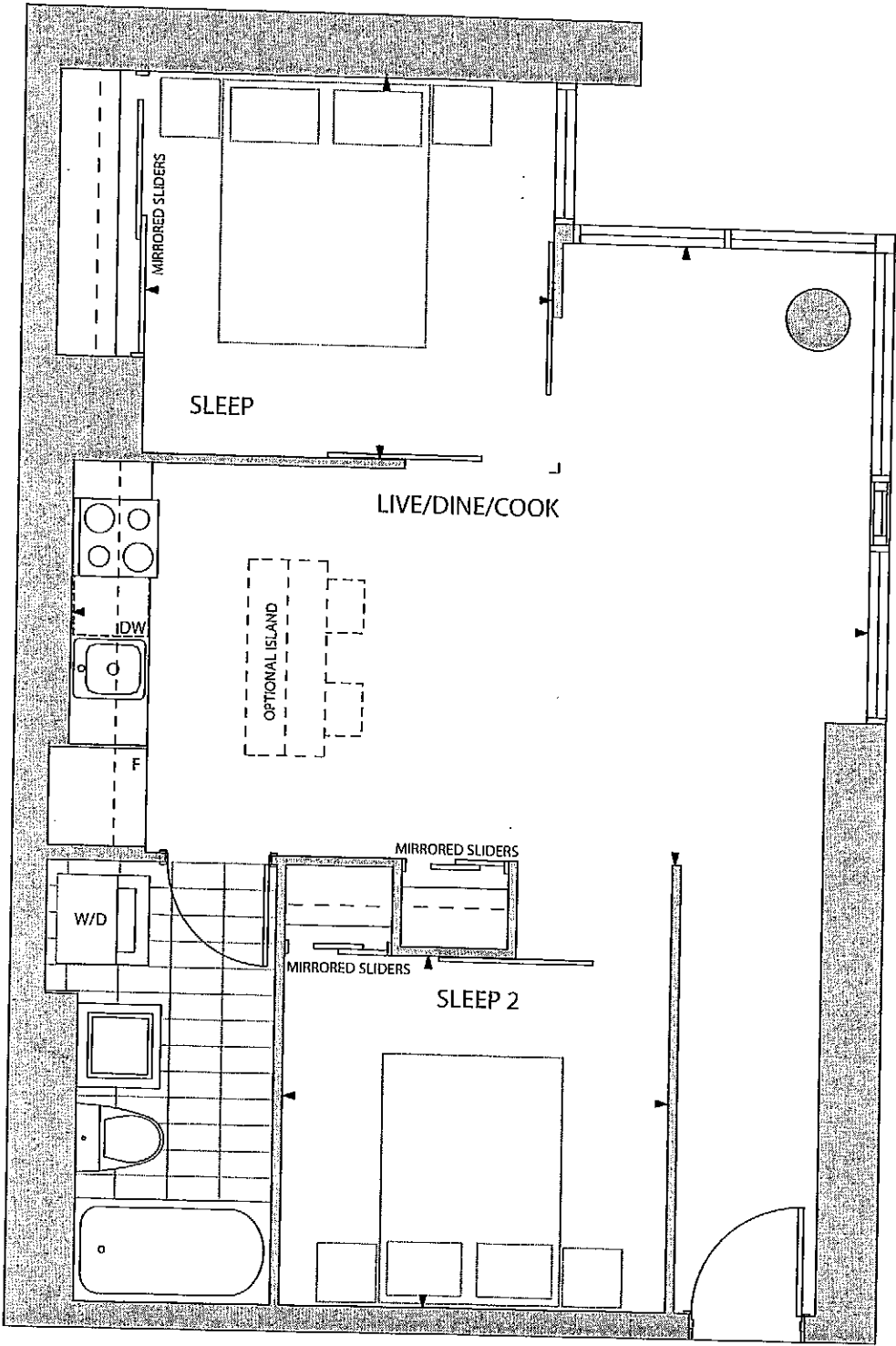
Trevor Fontaine, Sr Vice President, Sales
Sotheby's International Realty Canada

email: tfontaine@sothebysrealty.ca

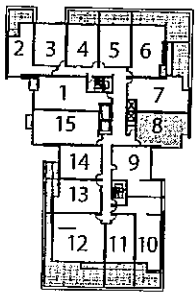
Sotheby's | **Canada**
INTERNATIONAL REALTY

CARMELINA

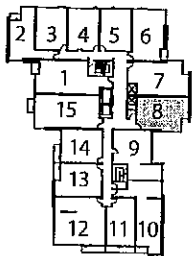
SCHEDULE "C"



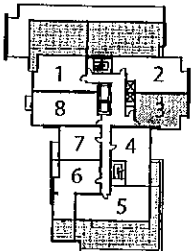
2 BEDROOM
677 SQ. FT.



5



6 / 7 / 8 / 9



10

Suite Numbers 508 608 708 808 908 1003
5th to 10th Floor

Purchaser Acknowledgement

Date

Suite#

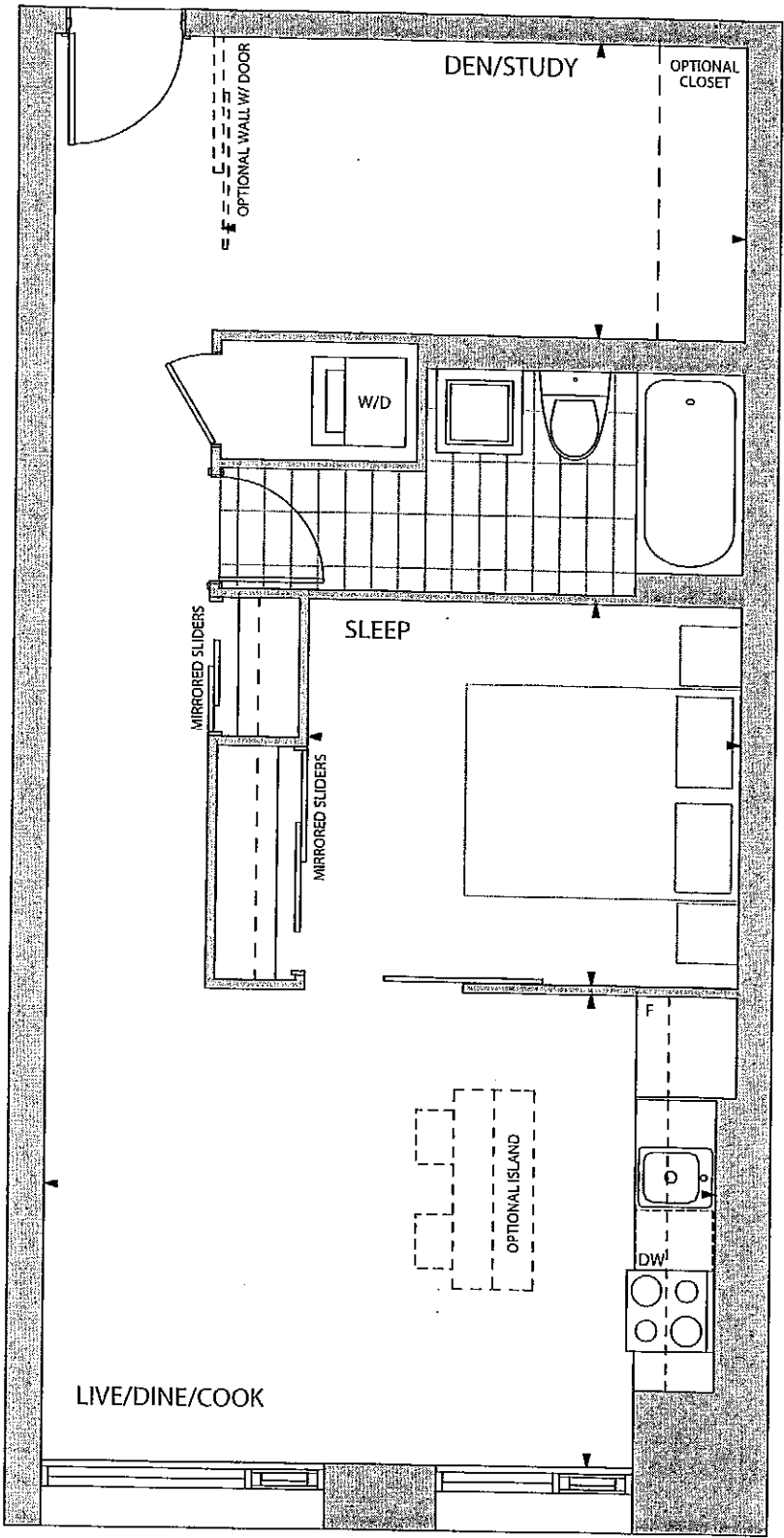
Level

Unit#

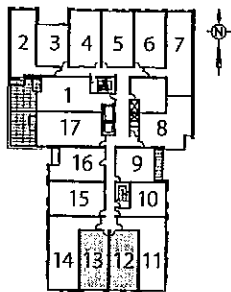
Dimensions, specifications, layouts (including tile patterns), window sizes, mullions, fixture representation, appliance locations, and materials are approximate only, may vary, and are subject to changes without notice as provided in the Agreement of Purchase and Sale. Plans may be reversed. Wall thickness will vary with floor levels reducing room dimensions accordingly. Prices are subject to change without notice. Errors and omissions excepted. Plans not to scale. February 2011

CARMELINA

SCHEDULE "C"



1 BEDROOM + DEN
679 SQ. FT.



2 / 3 / 4

Suite Numbers 212 213 312 313 412 413
2nd to 4th Floor

Purchaser Acknowledgement

Date

Suite#

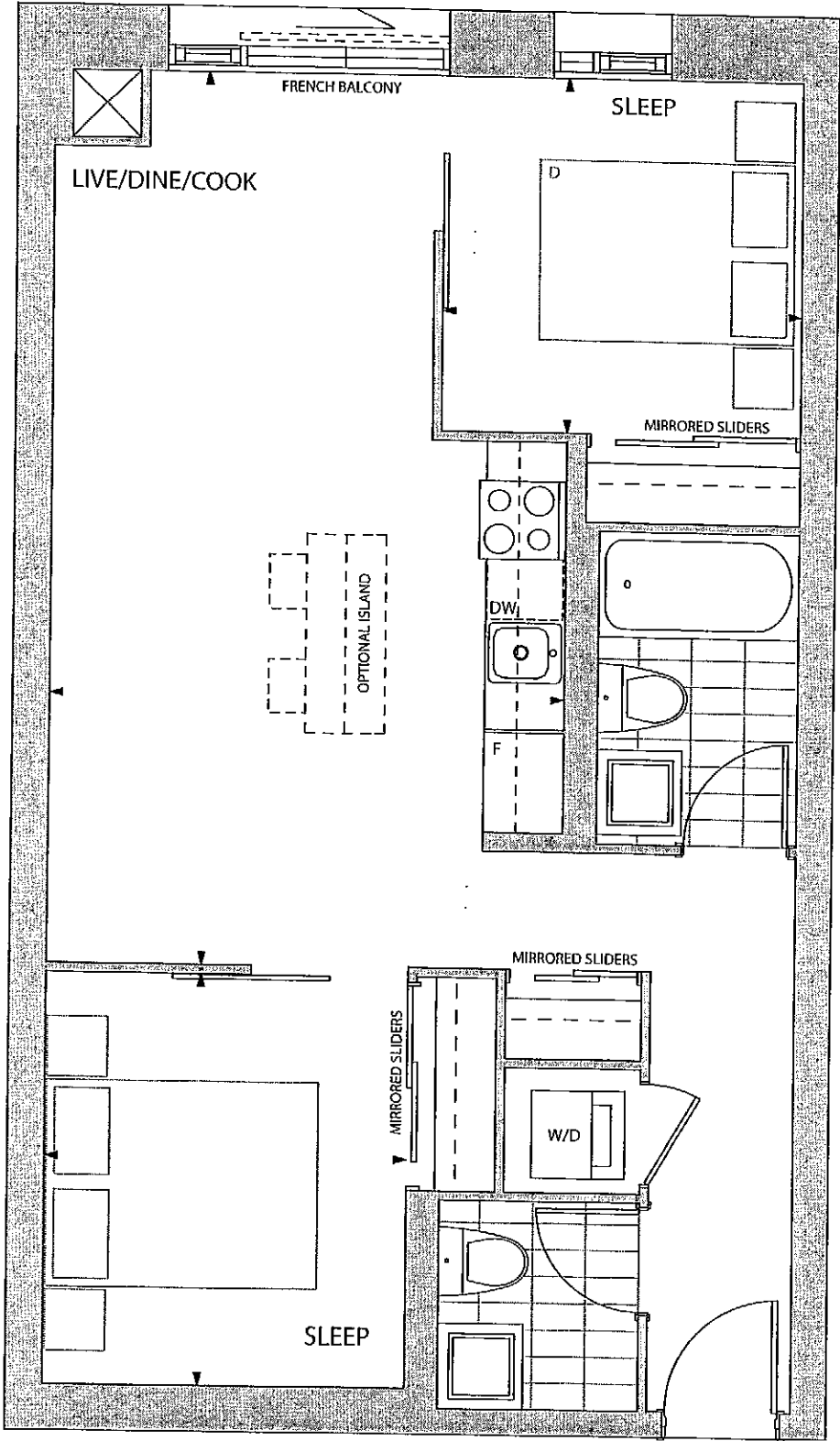
Level

Unit#

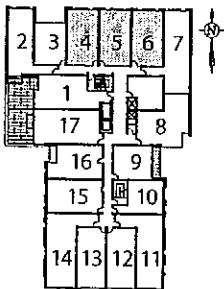
Dimensions, specifications, layouts (including tile patterns), window sizes, mullions, fixture representation, appliance locations, and materials are approximate only, may vary, and are subject to changes without notice as provided in the Agreement of Purchase and Sale. Plans may be reversed. Wall thickness will vary with floor levels reducing room dimensions accordingly. Prices are subject to change without notice. Errors and omissions excepted. Plans not to scale. February 2011

CARMELINA

SCHEDULE "C"



2 BEDROOM
717 SQ. FT.



2 / 3 / 4

Suite Numbers 204 205 206 304 305 306 404 405 406
2nd to 4th Floor

Purchaser Acknowledgement

Date

Suite#

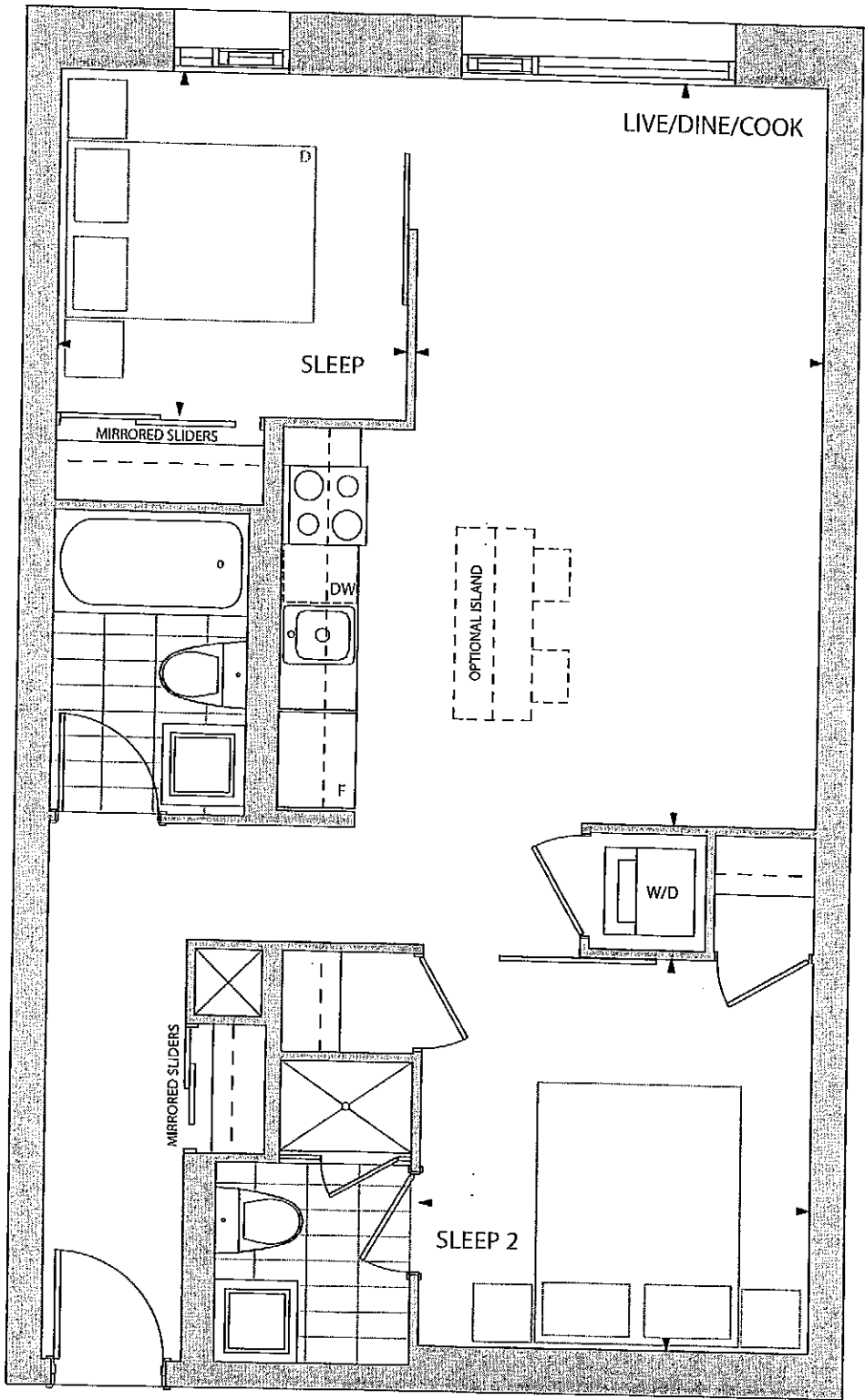
Level

Unit#

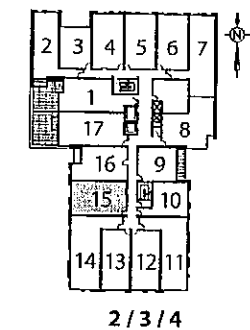
Dimensions, specifications, layouts (including tile patterns), window sizes, mullions, fixture representation, appliance locations, and materials are approximate only, may vary, and are subject to changes without notice as provided in the Agreement of Purchase and Sale. Plans may be reversed. Wall thickness will vary with floor levels reducing room dimensions accordingly. Prices are subject to change without notice. Errors and omissions excepted. Plans not to scale. February 2011

CARMELINA

SCHEDULE "C"



2 BEDROOM
737 SQ. FT.



2 / 3 / 4

Suite Numbers 215 315 415
2nd to 4th Floor

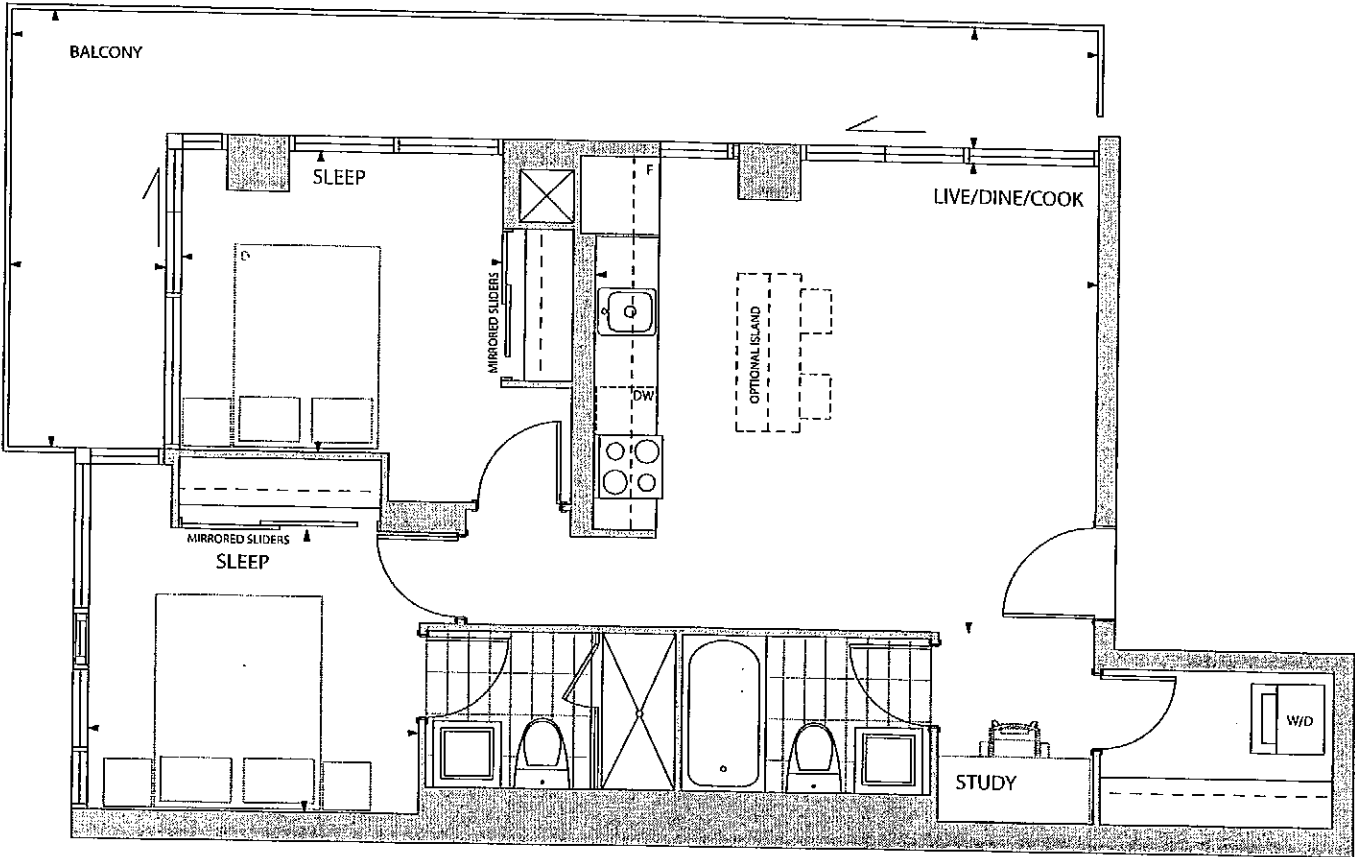
Purchaser Acknowledgement _____ Date _____

Suite# _____ Level _____ Unit# _____

Dimensions, specifications, layouts (including tile patterns), window sizes, mullions, fixture representation, appliance locations, and materials are approximate only, may vary, and are subject to changes without notice as provided in the Agreement of Purchase and Sale. Plans may be reversed. Wall thickness will vary with floor levels reducing room dimensions accordingly. Prices are subject to change without notice. Errors and omissions excepted. Plans not to scale. February 2011

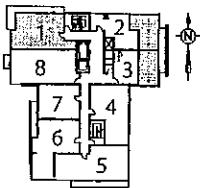
CARMELINA

SCHEDULE "C"



2 BEDROOM + STUDY
744 SQ. FT.

365,900 368,900



11



12

Purchaser Acknowledgement

Date

Suite#

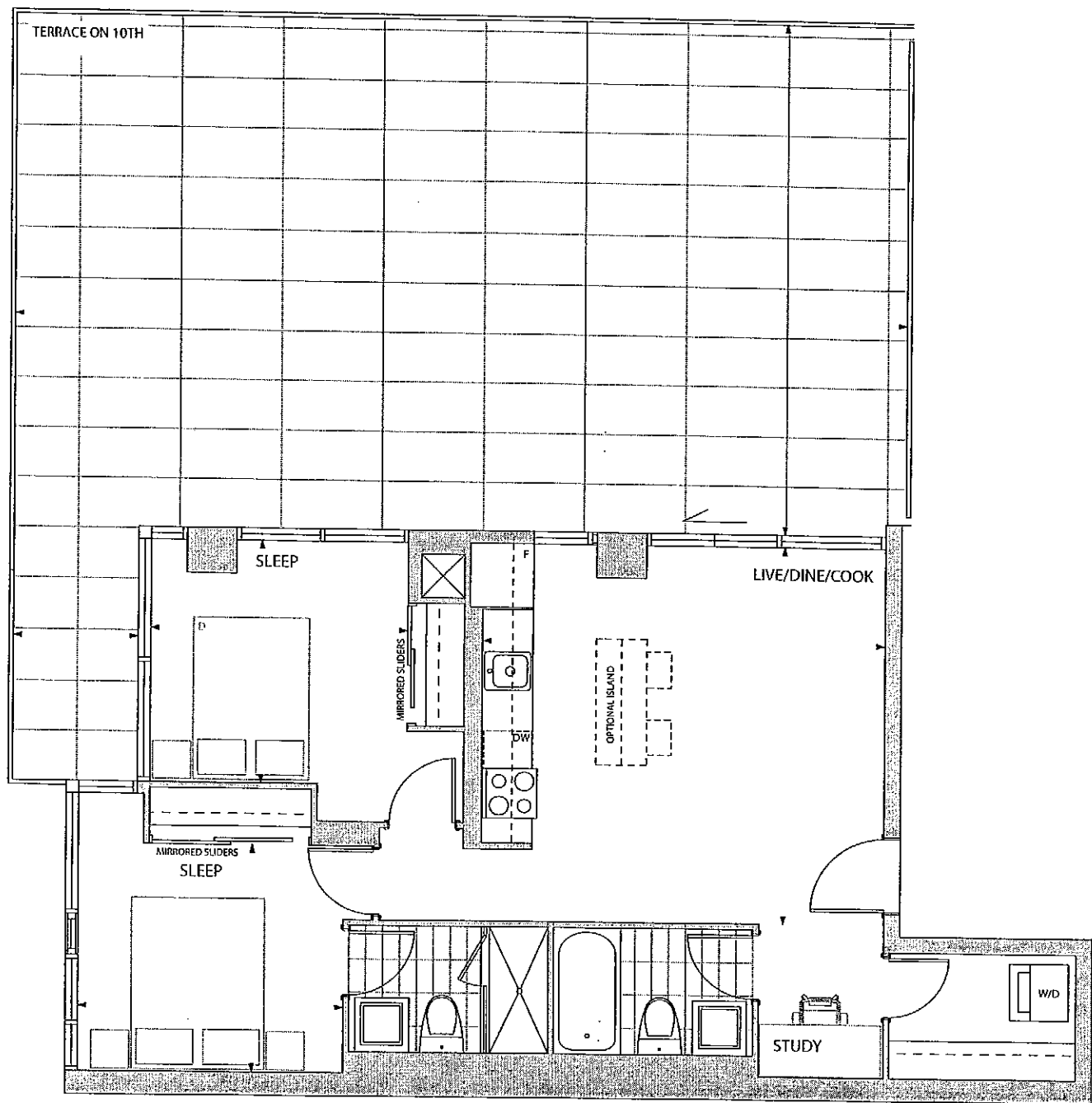
Level

Unit#

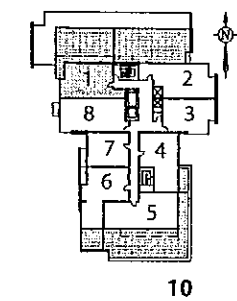
Dimensions, specifications, layouts (including tile patterns), window sizes, mullions, fixture representation, appliance locations, and materials are approximate only, may vary, and are subject to changes without notice as provided in the Agreement of Purchase and Sale. Plans may be reversed. Wall thickness will vary with floor levels reducing room dimensions accordingly. Prices are subject to change without notice. Errors and omissions excepted. Plans not to scale. February 2011

CARMELINA

SCHEDULE "C"



2 BEDROOM + STUDY
744 SQ. FT.



Suite Number 1001
10th Floor

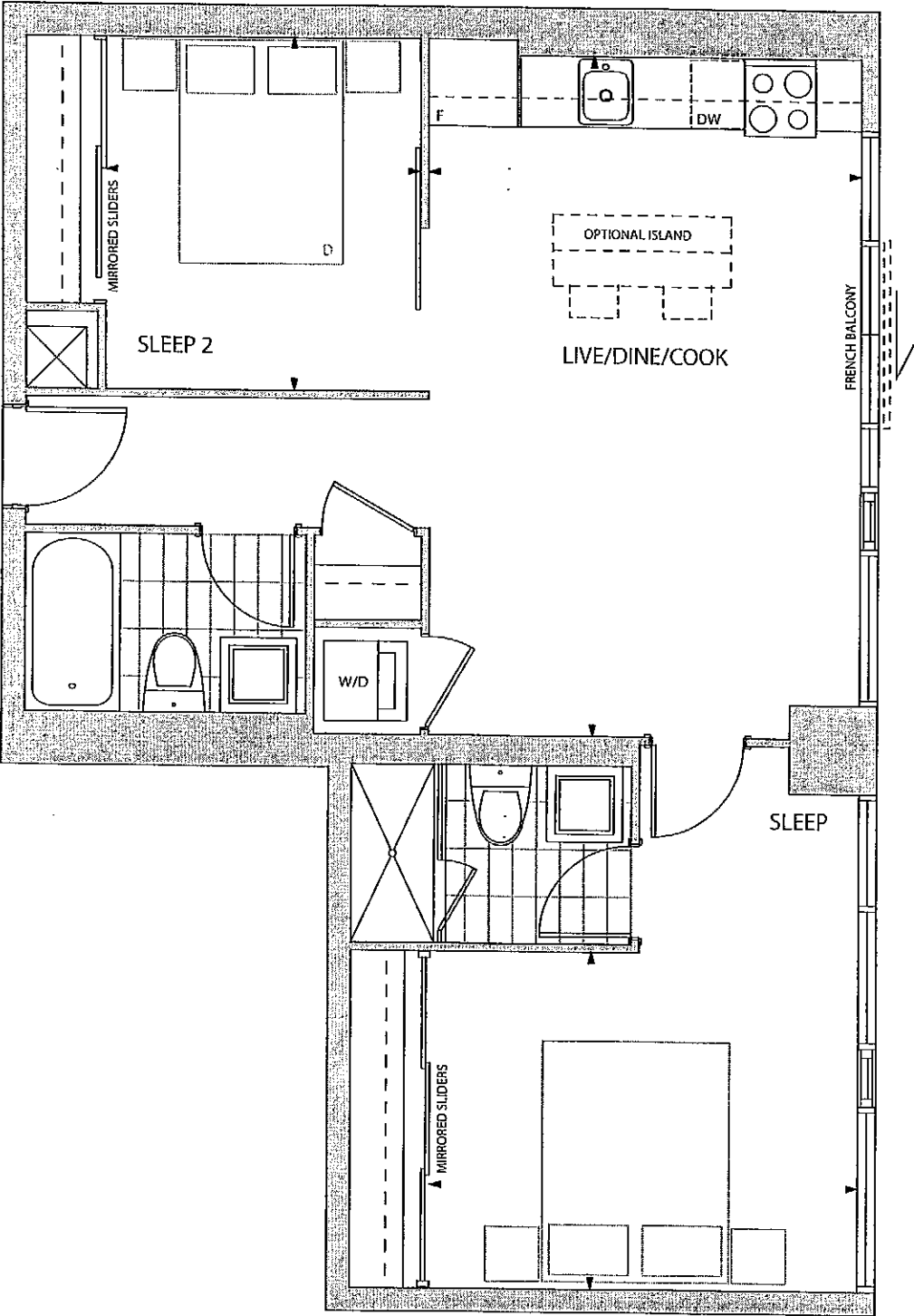
Purchaser Acknowledgement _____ Date _____

Suite# _____ Level _____ Unit# _____

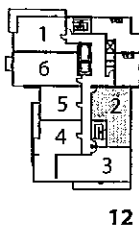
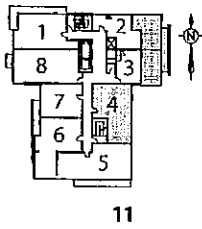
Dimensions, specifications, layouts (including tile patterns), window sizes, mullions, fixture representation, appliance locations, and materials are approximate only, may vary, and are subject to changes without notice as provided in the Agreement of Purchase and Sale. Plans may be reversed. Wall thickness will vary with floor levels reducing room dimensions accordingly. Prices are subject to change without notice. Errors and omissions excepted. Plans not to scale. February 2011

CARMELINA

SCHEDULE "C"



2 BEDROOM
757 SQ. FT.



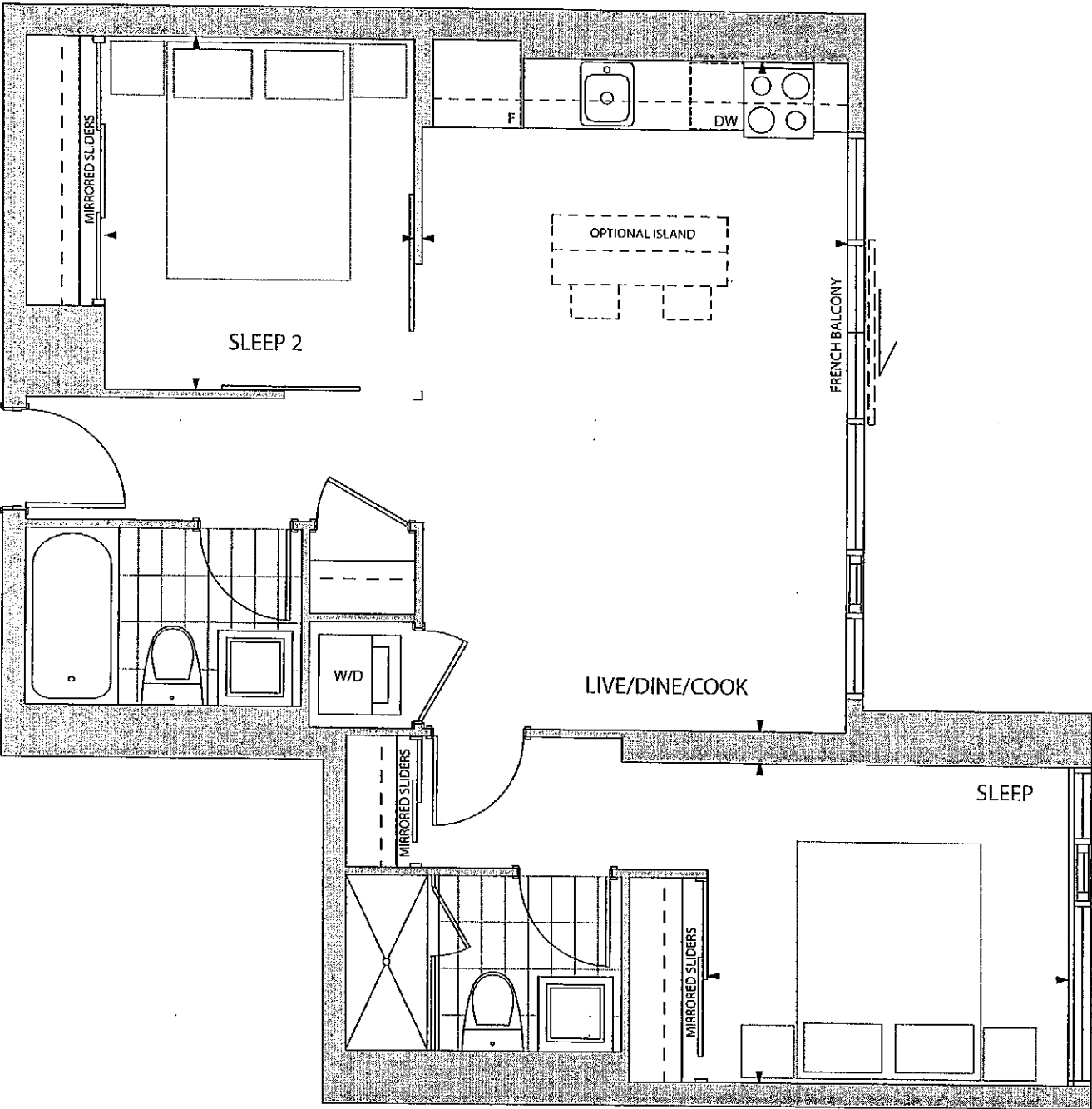
Suite Number 1104 1202
11th to 12th Floor

Purchaser Acknowledgement _____ Date _____
Suite# _____ Level _____ Unit# _____

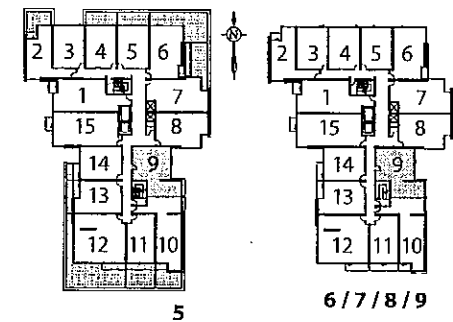
Dimensions, specifications, layouts (including tile patterns), window sizes, mullions, fixture representation, appliance locations, and materials are approximate only, may vary, and are subject to changes without notice as provided in the Agreement of Purchase and Sale. Plans may be reversed. Wall thickness will vary with floor levels reducing room dimensions accordingly. Prices are subject to change without notice. Errors and omissions excepted. Plans not to scale. February 2011

CARMELINA

SCHEDULE "C"



2 BEDROOM
757 SQ. FT.



Suite Numbers 509 609 709 809 909
5th to 9th Floor

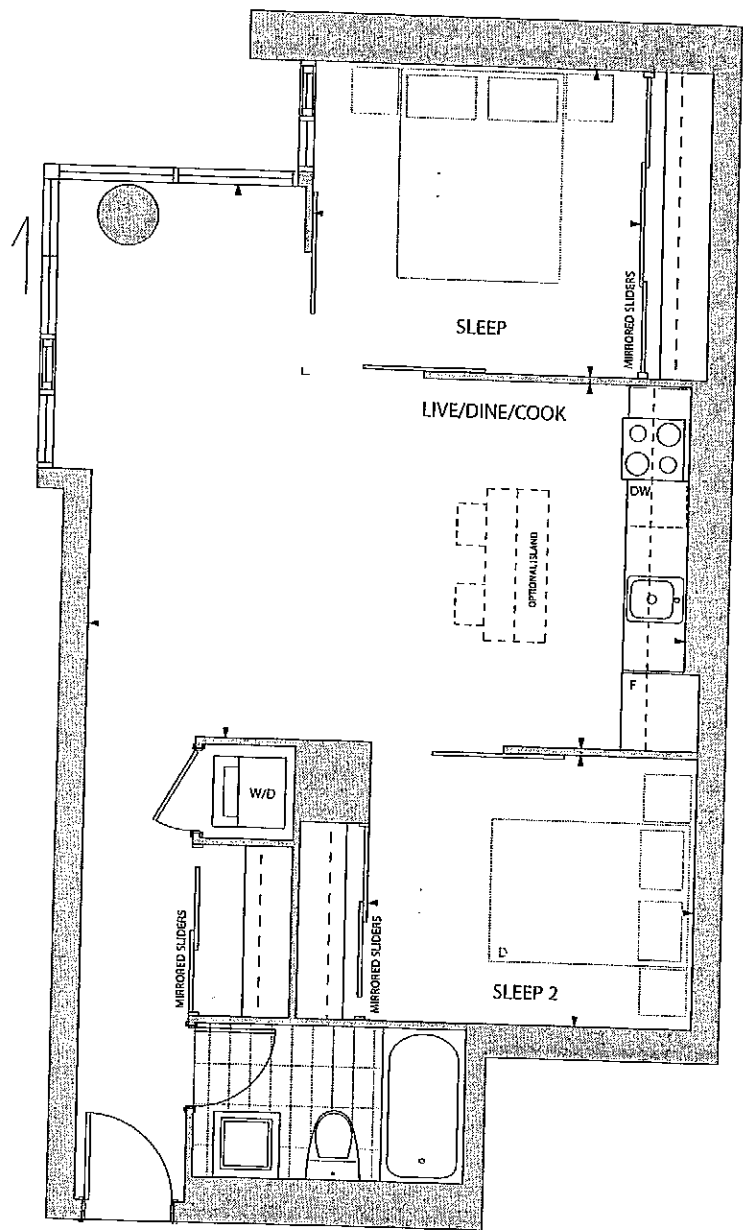
Purchaser Acknowledgement _____ Date _____

Suite# _____ Level _____ Unit# _____

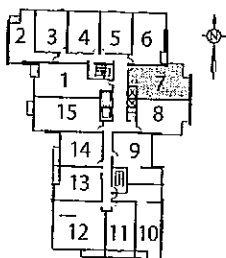
Dimensions, specifications, layouts (including tile patterns), window sizes, mullions, fixture representation, appliance locations, and materials are approximate only, may vary, and are subject to changes without notice as provided in the Agreement of Purchase and Sale. Plans may be reversed. Wall thickness will vary with floor levels reducing room dimensions accordingly. Prices are subject to change without notice. Errors and omissions excepted. Plans not to scale. February 2011

CARMELINA

SCHEDULE "C"



2 BEDROOM
758 SQ. FT.



6 / 7 / 8 / 9

Suite Numbers 607 707 807 907
6th to 9th Floor

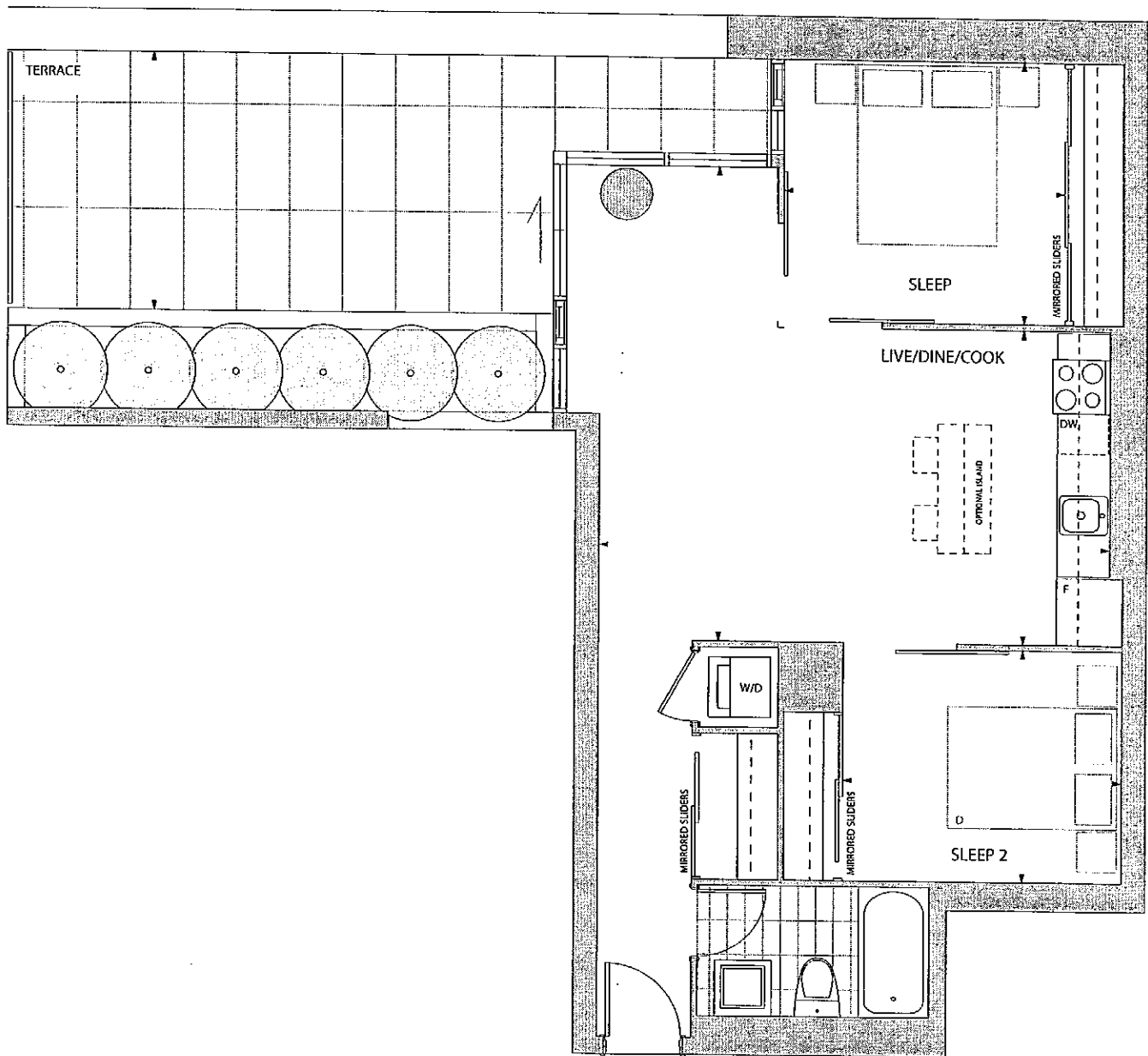
Purchaser Acknowledgement _____ Date _____

Suite# _____ Level _____ Unit# _____

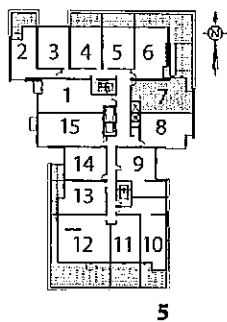
Dimensions, specifications, layouts (including tile patterns), window sizes, mullions, fixture representation, appliance locations, and materials are approximate only, may vary, and are subject to changes without notice as provided in the Agreement of Purchase and Sale. Plans may be reversed. Wall thickness will vary with floor levels reducing room dimensions accordingly. Prices are subject to change without notice. Errors and omissions excepted. Plans not to scale. February 2011

CARMELINA

SCHEDULE "C"



2 BEDROOM
758 SQ. FT.



5

Suite Numbers 507
5th Floor

Purchaser Acknowledgement

Date

Suite#

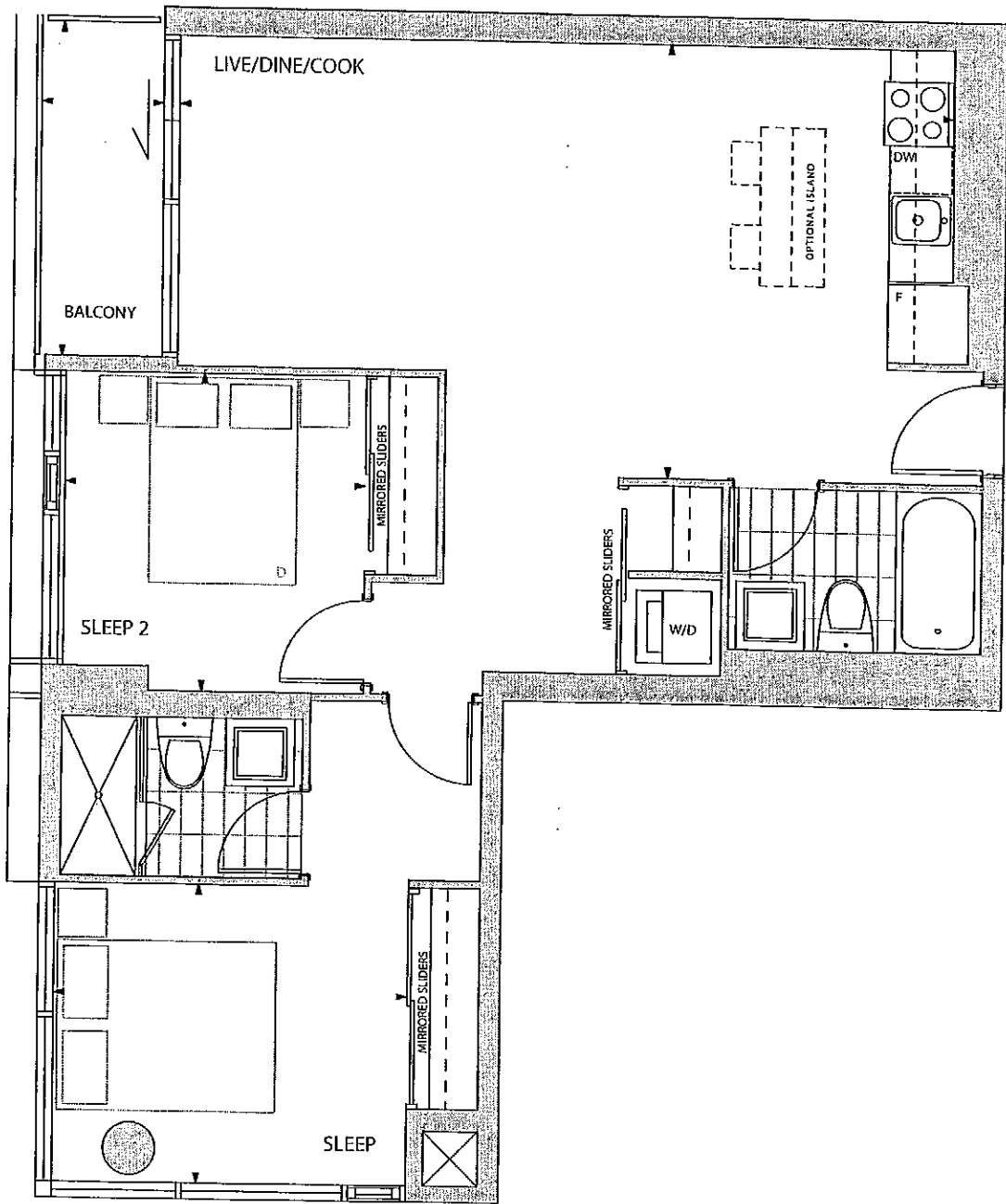
Level

Unit#

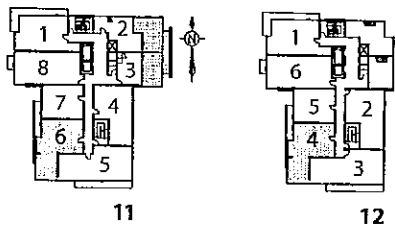
Dimensions, specifications, layouts (including tile patterns), window sizes, mullions, fixture representation, appliance locations, and materials are approximate only, may vary, and are subject to changes without notice as provided in the Agreement of Purchase and Sale. Plans may be reversed. Wall thickness will vary with floor levels reducing room dimensions accordingly. Prices are subject to change without notice. Errors and omissions excepted. Plans not to scale. February 2011

CARMELINA

SCHEDULE "C"



2 BEDROOM
804 SQ. FT.



Purchaser Acknowledgement

Date

Suite#

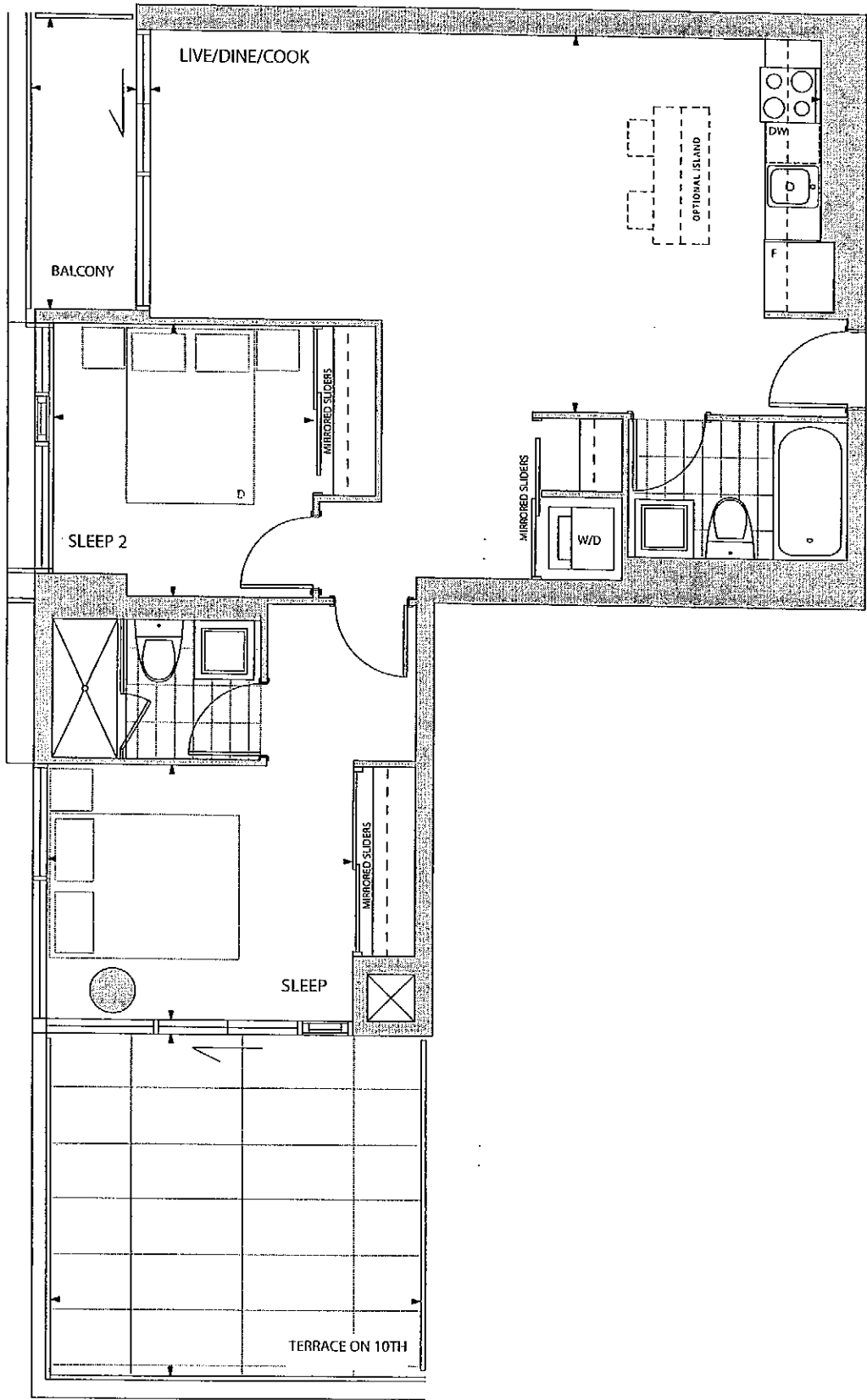
Level

Unit#

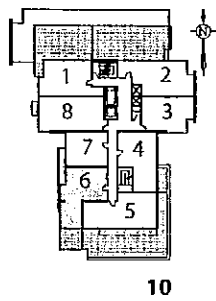
Dimensions, specifications, layouts (including tile patterns), window sizes, mullions, fixture representation, appliance locations, and materials are approximate only, may vary, and are subject to changes without notice as provided in the Agreement of Purchase and Sale. Plans may be reversed. Wall thickness will vary with floor levels reducing room dimensions accordingly. Prices are subject to change without notice. Errors and omissions excepted. Plans not to scale. February 2011

CARMELINA

SCHEDULE "C"



2 BEDROOM
804 SQ. FT.



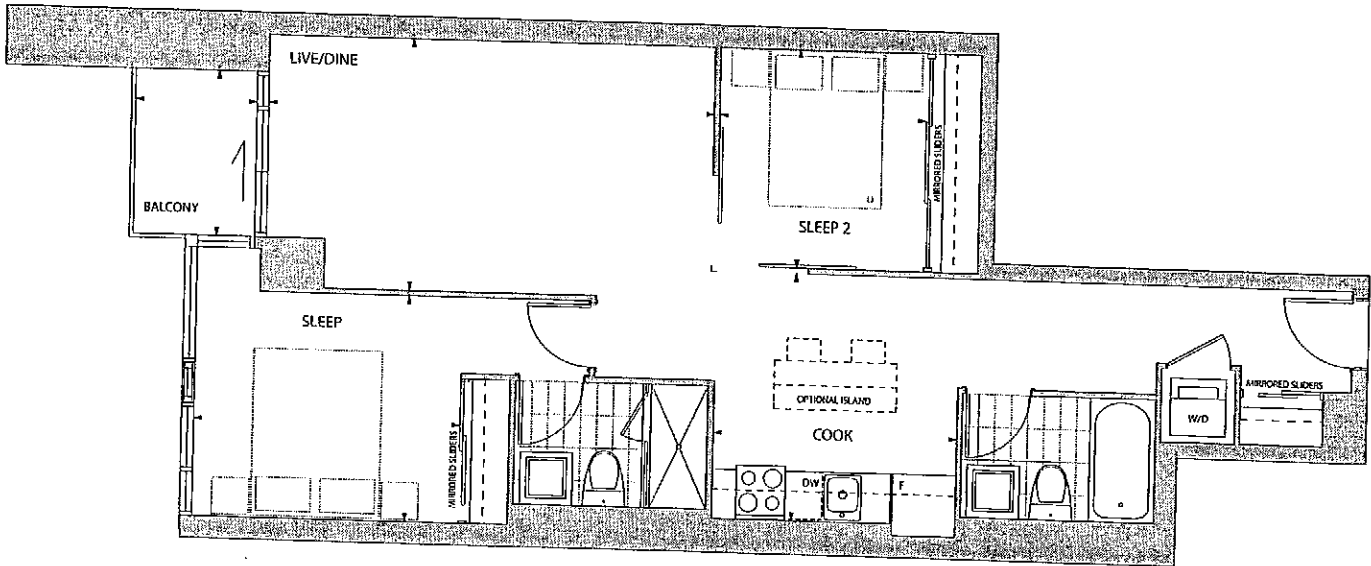
Purchaser Acknowledgement _____ Date _____

Suite# _____ Level _____ Unit# _____

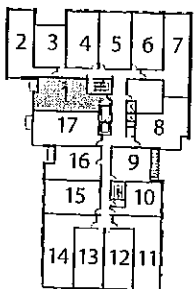
Dimensions, specifications, layouts (including tile patterns), window sizes, mullions, fixture representation, appliance locations, and materials are approximate only, may vary, and are subject to changes without notice as provided in the Agreement of Purchase and Sale. Plans may be reversed. Wall thickness will vary with floor levels reducing room dimensions accordingly. Prices are subject to change without notice. Errors and omissions excepted. Plans not to scale. February 2011

CARMELINA

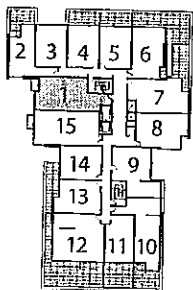
SCHEDULE "C"



2 BEDROOM
805 SQ. FT.



3 / 4



5



6 / 7 / 8 / 9

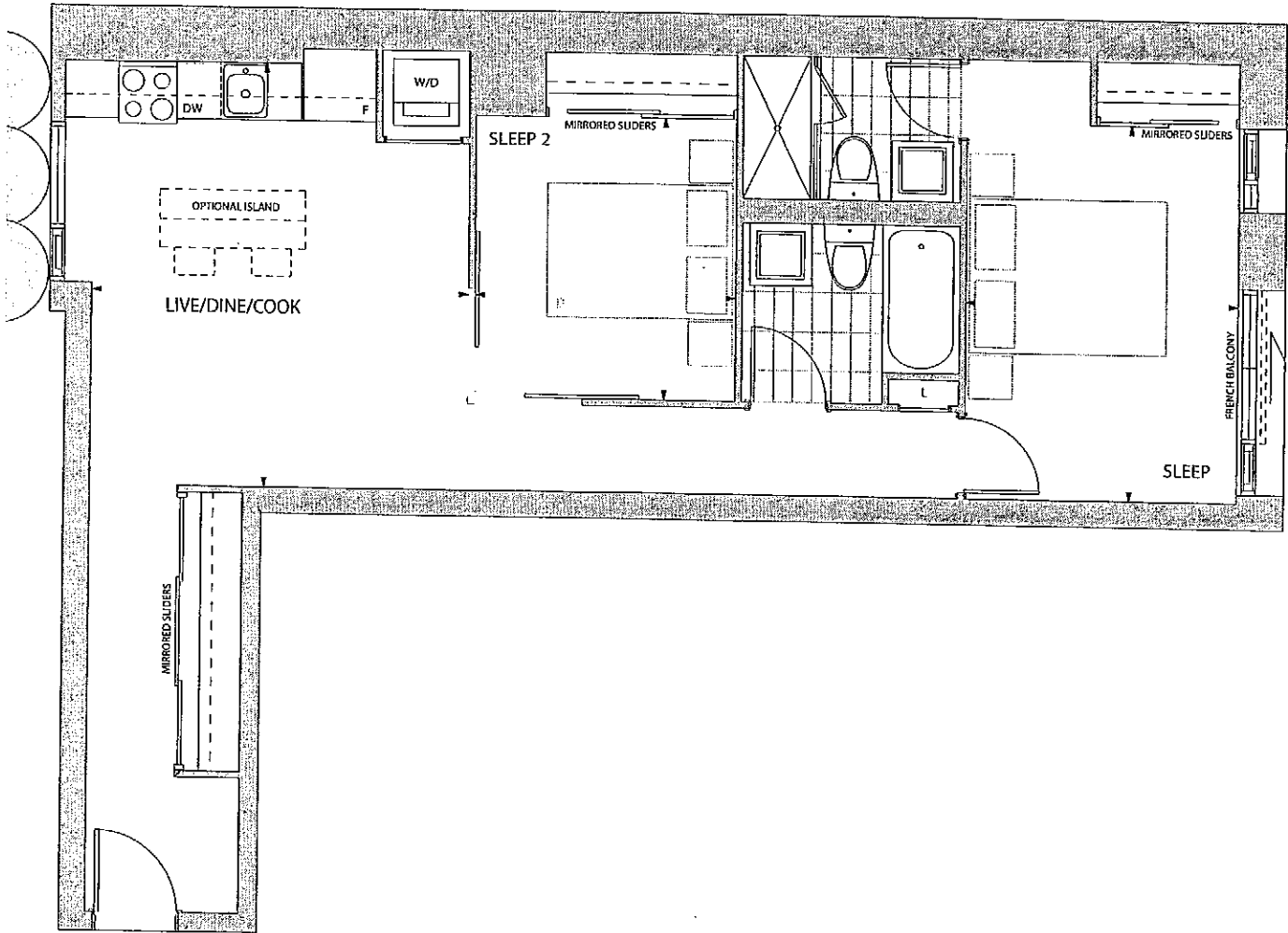
Suite Numbers 301 401 501 601 701 801 901
3rd to 9th Floor

Purchaser Acknowledgement _____ Date _____
Suite# _____ Level _____ Unit# _____

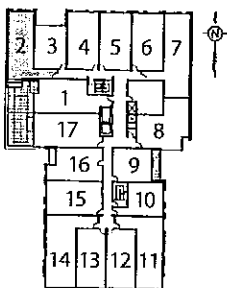
Dimensions, specifications, layouts (including tile patterns), window sizes, mullions, fixture representation, appliance locations, and materials are approximate only, may vary, and are subject to changes without notice as provided in the Agreement of Purchase and Sale. Plans may be reversed. Wall thickness will vary with floor levels reducing room dimensions accordingly. Prices are subject to change without notice. Errors and omissions excepted. Plans not to scale. February 2011

CARMELINA

SCHEDULE "C"



2 BEDROOM
847 SQ. FT.



2 / 3 / 4

Suite Numbers 202 302 402
2nd to 4th Floor

Purchaser Acknowledgement

Date

Suite#

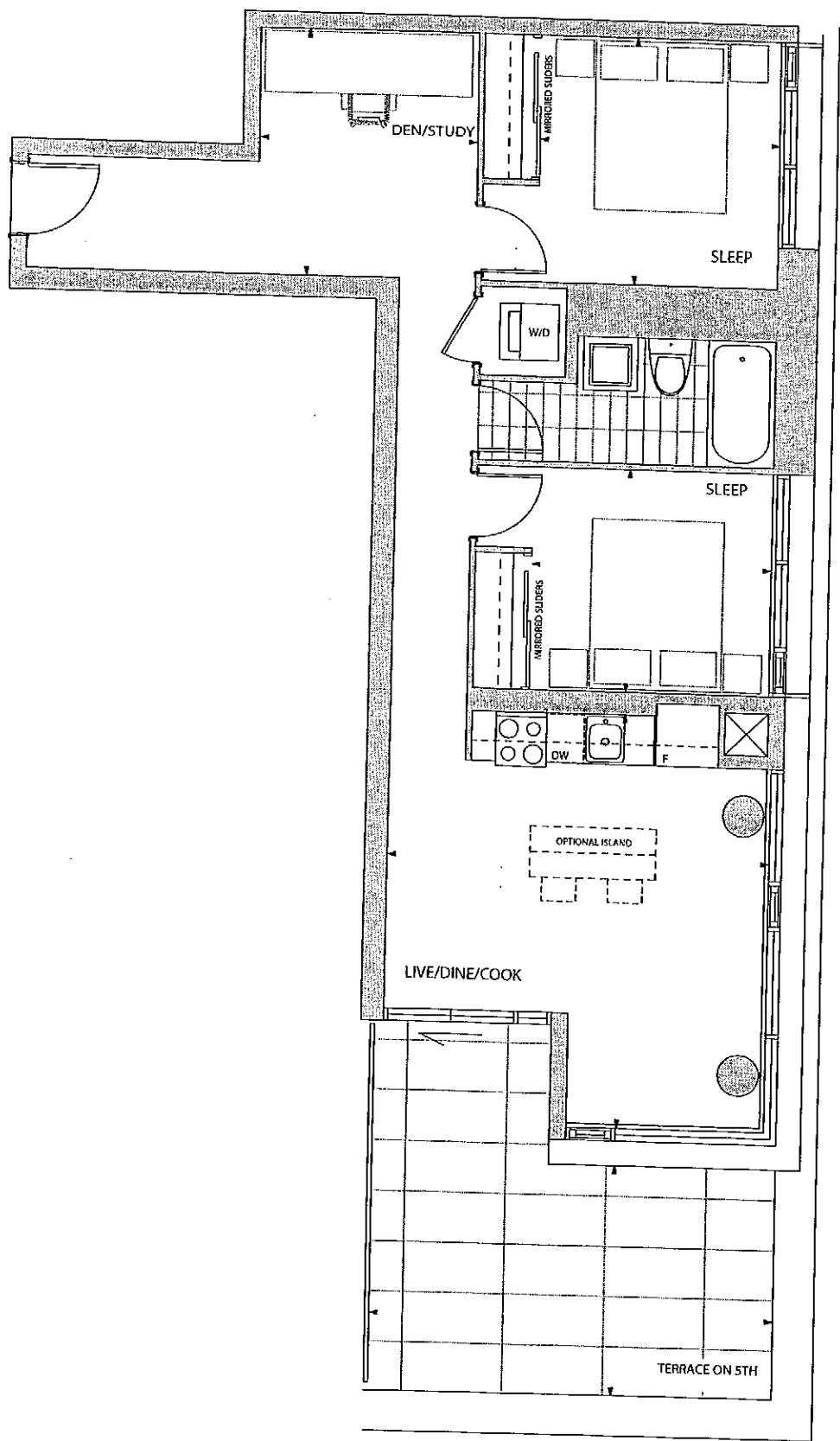
Level

Unit#

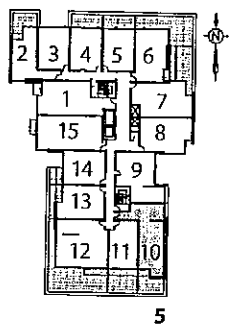
Dimensions, specifications, layouts (including tile patterns), window sizes, mullions, fixture representation, appliance locations, and materials are approximate only, may vary, and are subject to changes without notice as provided in the Agreement of Purchase and Sale. Plans may be reversed. Wall thickness will vary with floor levels reducing room dimensions accordingly. Prices are subject to change without notice. Errors and omissions excepted. Plans not to scale. February 2011

CARMELINA

SCHEDULE "C"



2 BEDROOM + STUDY
853 SQ. FT.



Suite Numbers 510
5th Floor

Purchaser Acknowledgement

Date

Suite#

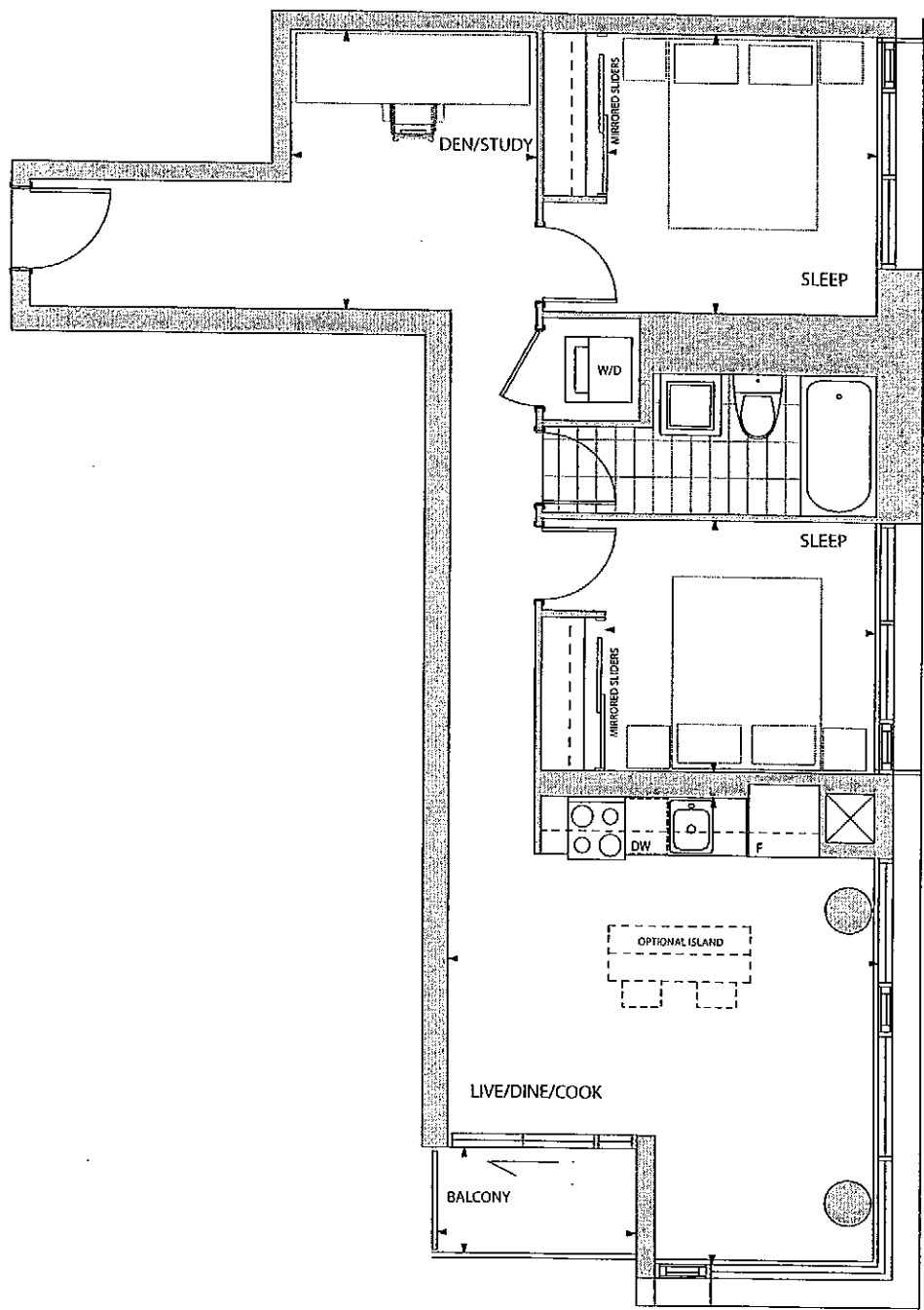
Level

Unit#

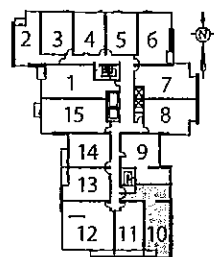
Dimensions, specifications, layouts (including tile patterns), window sizes, mullions, fixture representation, appliance locations, and materials are approximate only, may vary, and are subject to changes without notice as provided in the Agreement of Purchase and Sale. Plans may be reversed. Wall thickness will vary with floor levels reducing room dimensions accordingly. Prices are subject to change without notice. Errors and omissions excepted. Plans not to scale. February 2011

CARMELINA

SCHEDULE "C"



2 BEDROOM + STUDY
853 SQ. FT.



6 / 7 / 8 / 9

Suite Numbers 610 710 810 910
6th to 9th Floor

Purchaser Acknowledgement

Date

Suite#

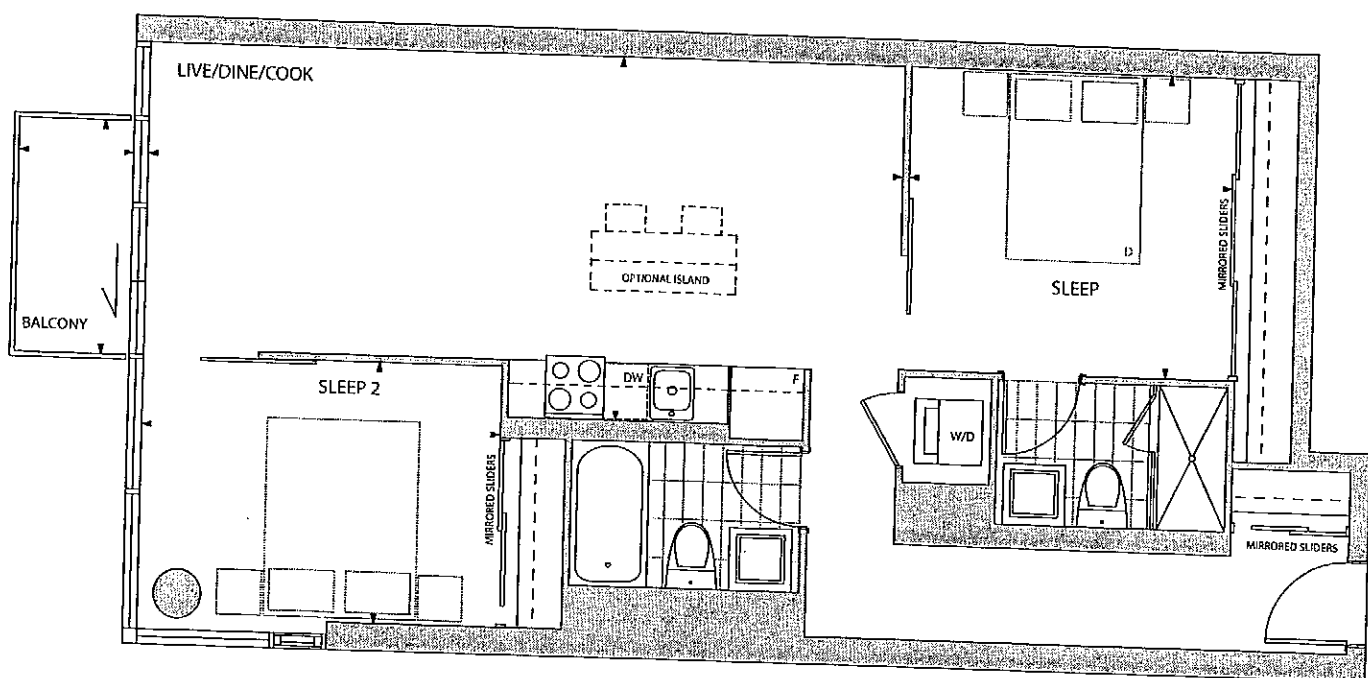
Level

Unit#

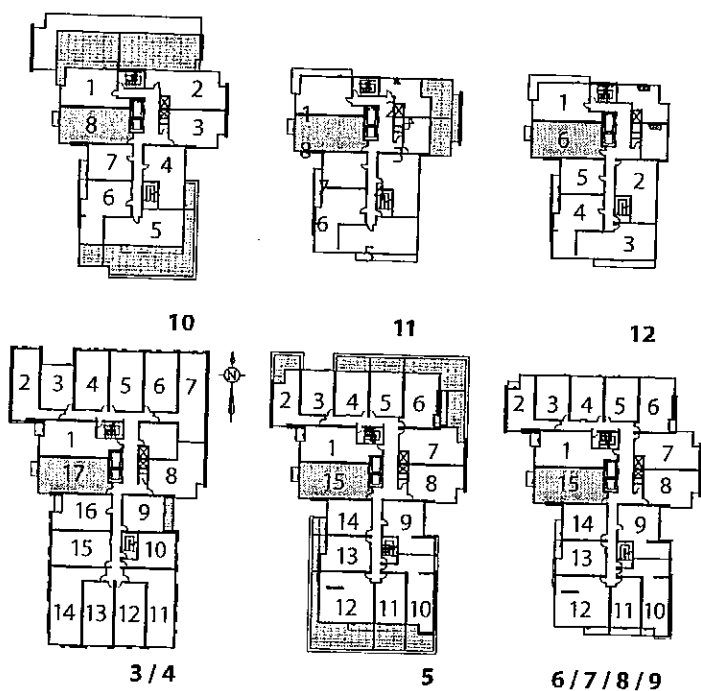
Dimensions, specifications, layouts (including tile patterns), window sizes, mullions, fixture representation, appliance locations, and materials are approximate only, may vary, and are subject to changes without notice as provided in the Agreement of Purchase and Sale. Plans may be reversed. Wall thickness will vary with floor levels reducing room dimensions accordingly. Prices are subject to change without notice. Errors and omissions excepted. Plans not to scale. February 2011

CARMELINA

SCHEDULE "C"



2 BEDROOM
868 SQ. FT.



Suite Numbers 317 417 515 615 715 815 915 1008 1108 1206
5th to 12th Floor

Purchaser Acknowledgement

Date

Suite#

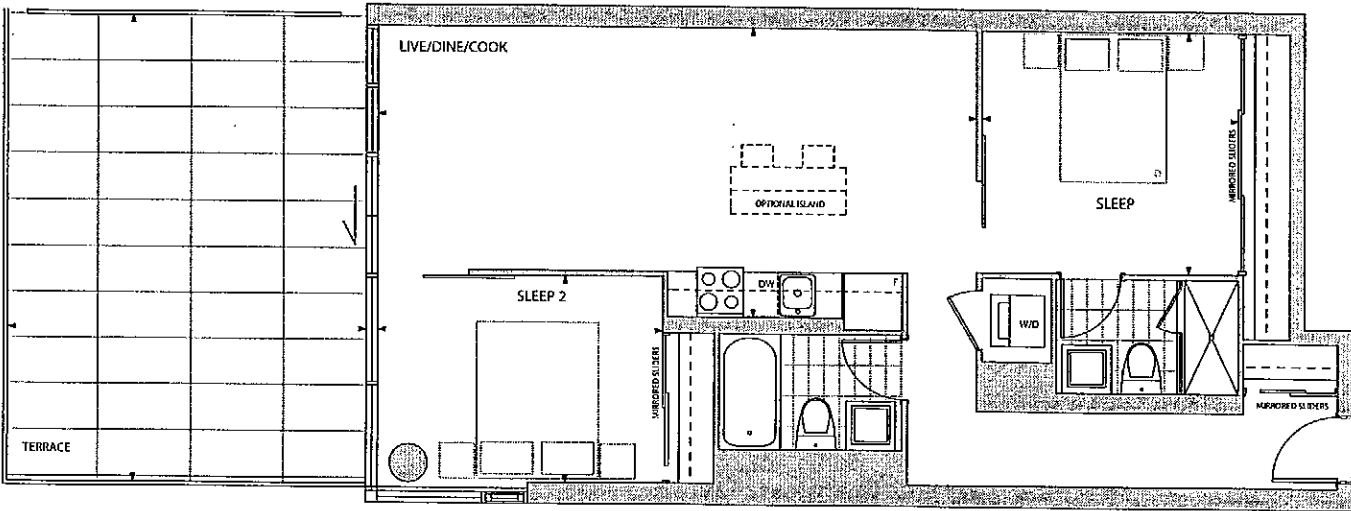
Level

Unit#

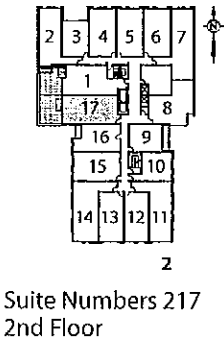
Dimensions, specifications, layouts (including tile patterns), window sizes, mullions, fixture representation, appliance locations, and materials are approximate only, may vary, and are subject to changes without notice as provided in the Agreement of Purchase and Sale. Plans may be reversed. Wall thickness will vary with floor levels reducing room dimensions accordingly. Prices are subject to change without notice. Errors and omissions excepted. Plans not to scale. February 2011

CARMELINA

SCHEDULE "C"



2 BEDROOM
868 SQ. FT.



Purchaser Acknowledgement

Date

Suite#

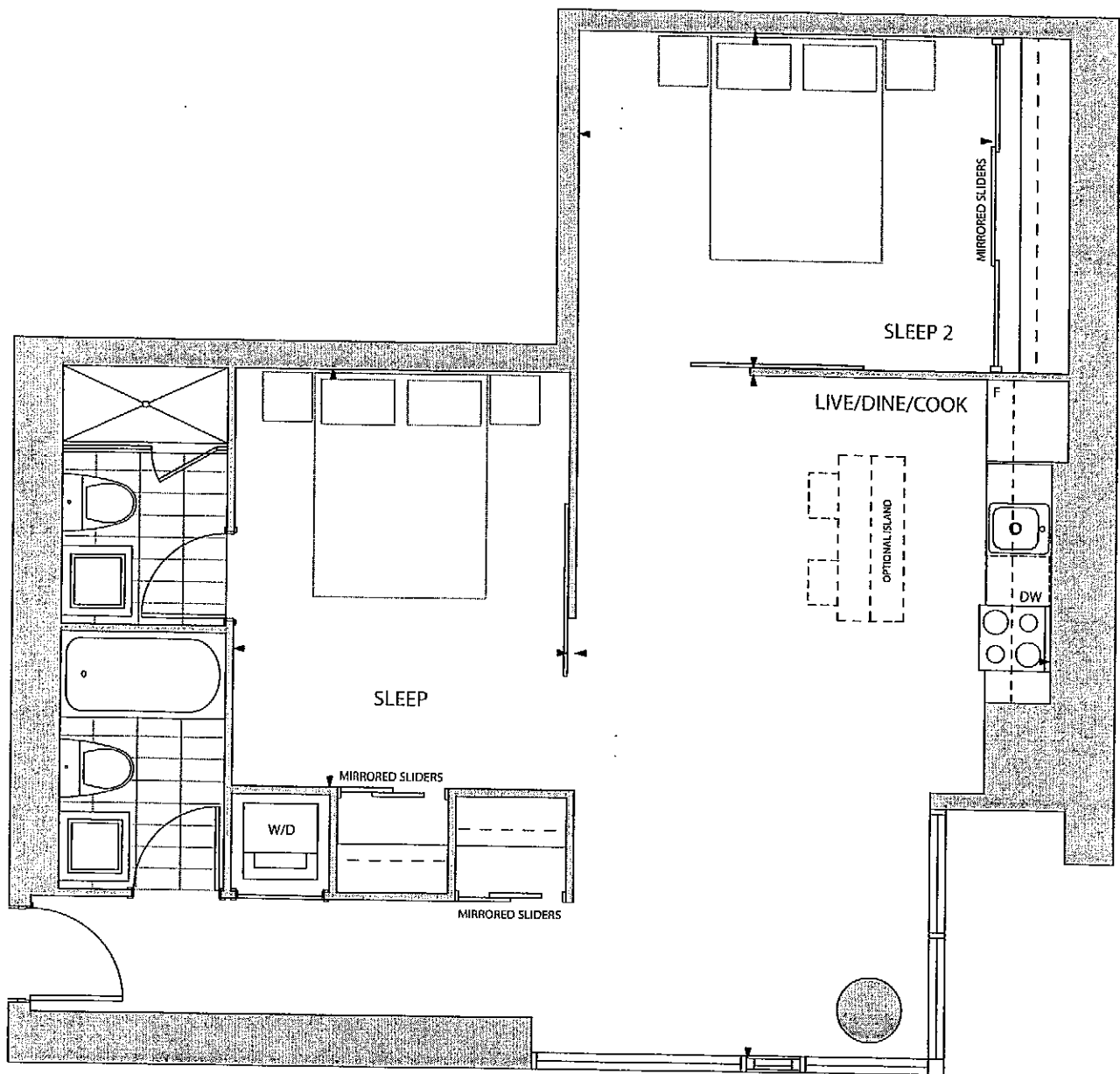
Level

Unit#

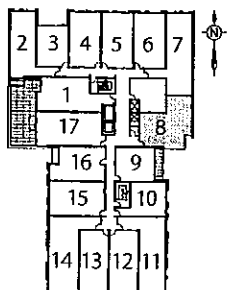
Dimensions, specifications, layouts (including tile patterns), window sizes, mullions, fixture representation, appliance locations, and materials are approximate only, may vary, and are subject to changes without notice as provided in the Agreement of Purchase and Sale. Plans may be reversed. Wall thickness will vary with floor levels reducing room dimensions accordingly. Prices are subject to change without notice. Errors and omissions excepted. Plans not to scale. February 2011

CARMELINA

SCHEDULE "C"



2 BEDROOM
868 SQ. FT.



2 / 3 / 4

Suite Numbers 208 308 408
2nd to 4th Floor

Purchaser Acknowledgement

Date

Suite#

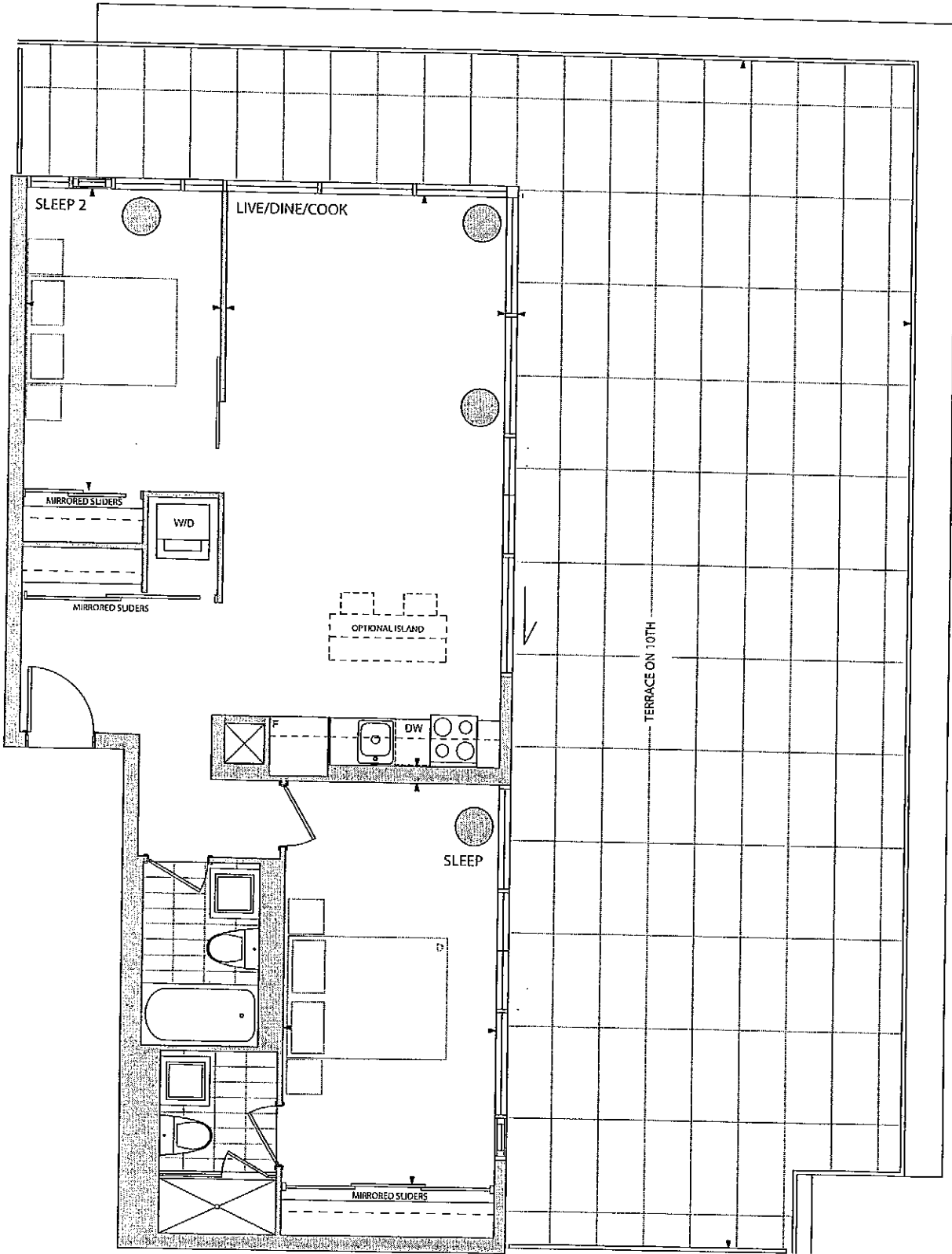
Level

Unit#

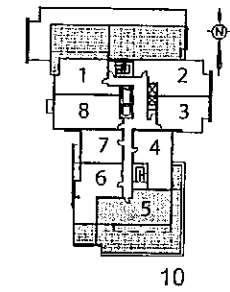
Dimensions, specifications, layouts (including tile patterns), window sizes, mullions, fixture representation, appliance locations, and materials are approximate only, may vary, and are subject to changes without notice as provided in the Agreement of Purchase and Sale. Plans may be reversed. Wall thickness will vary with floor levels reducing room dimensions accordingly. Prices are subject to change without notice. Errors and omissions excepted. Plans not to scale. February 2011

CARMELINA

SCHEDULE "C"



2 BEDROOM
873 SQ. FT.



Suite Number 1005
10th Floor

Purchaser Acknowledgement

Date

Suite#

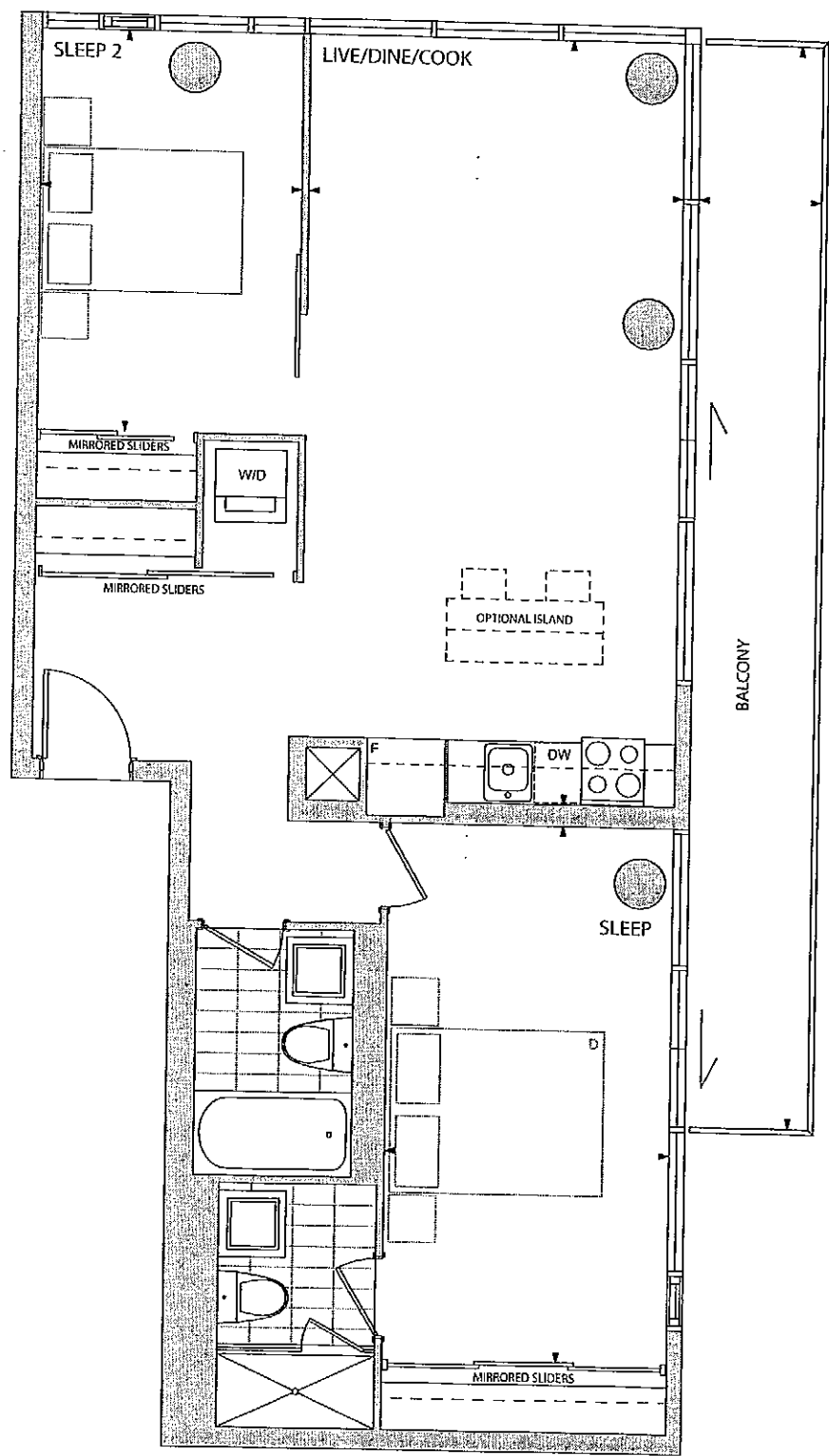
Level

Unit#

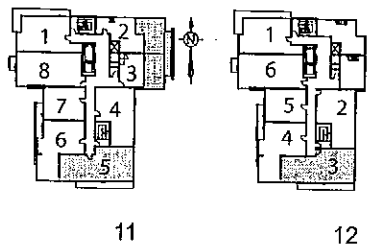
Dimensions, specifications, layouts (including tile patterns), window sizes, mullions, fixture representation, appliance locations, and materials are approximate only, may vary, and are subject to changes without notice as provided in the Agreement of Purchase and Sale. Plans may be reversed. Wall thickness will vary with floor levels reducing room dimensions accordingly. Prices are subject to change without notice. Errors and omissions excepted. Plans not to scale. February 2011

CARMELINA

SCHEDULE "C"



2 BEDROOM
873 SQ. FT.



Purchaser Acknowledgement

Date

Suite#

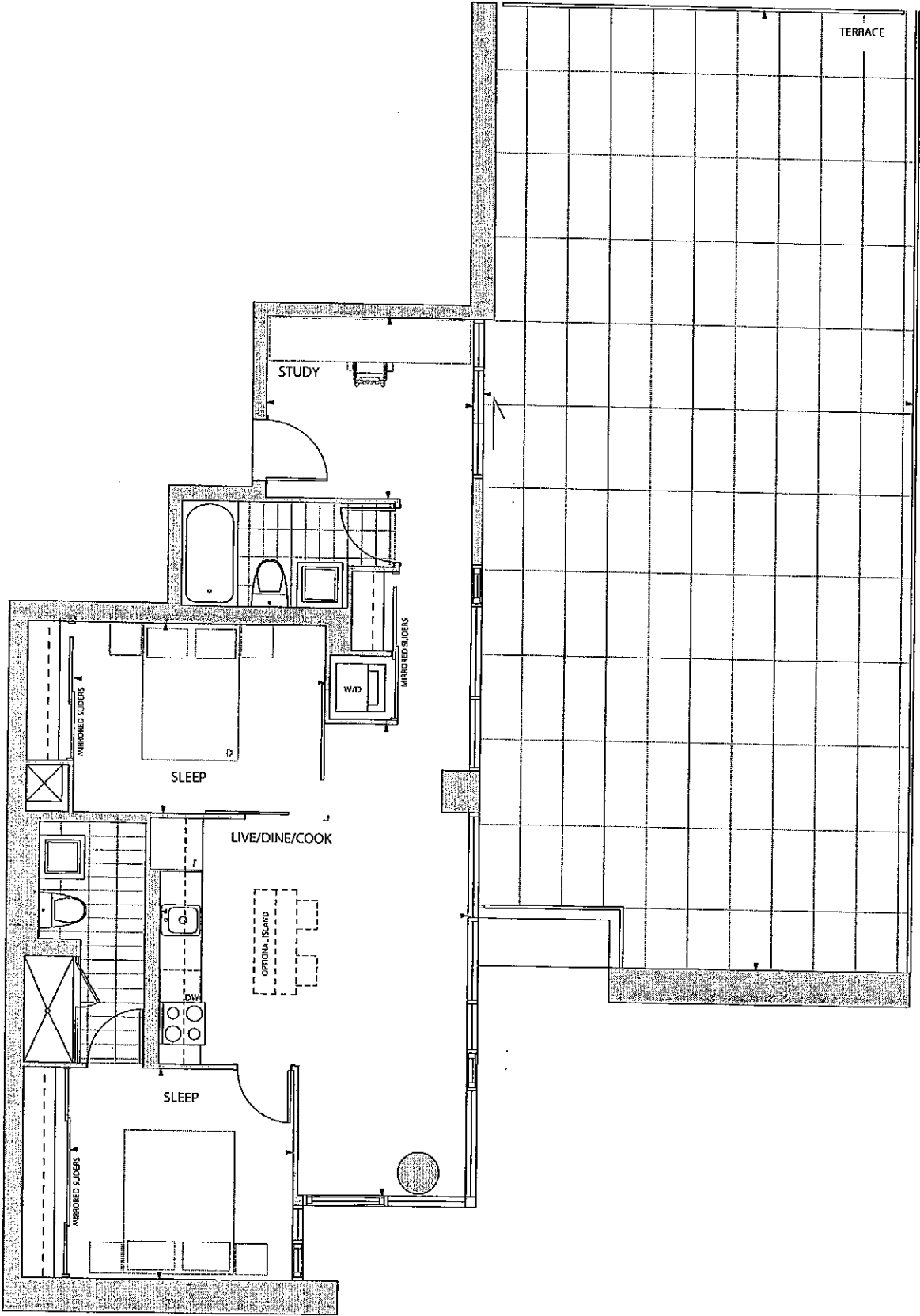
Level

Unit#

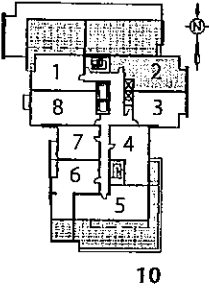
Dimensions, specifications, layouts (including tile patterns), window sizes, mullions, fixture representation, appliance locations, and materials are approximate only, may vary, and are subject to changes without notice as provided in the Agreement of Purchase and Sale. Plans may be reversed. Wall thickness will vary with floor levels reducing room dimensions accordingly. Prices are subject to change without notice. Errors and omissions excepted. Plans not to scale. February 2011

CARMELINA

SCHEDULE "C"



2 BEDROOM + STUDY
881 SQ. FT.



Suite Number 1002
10th Floor

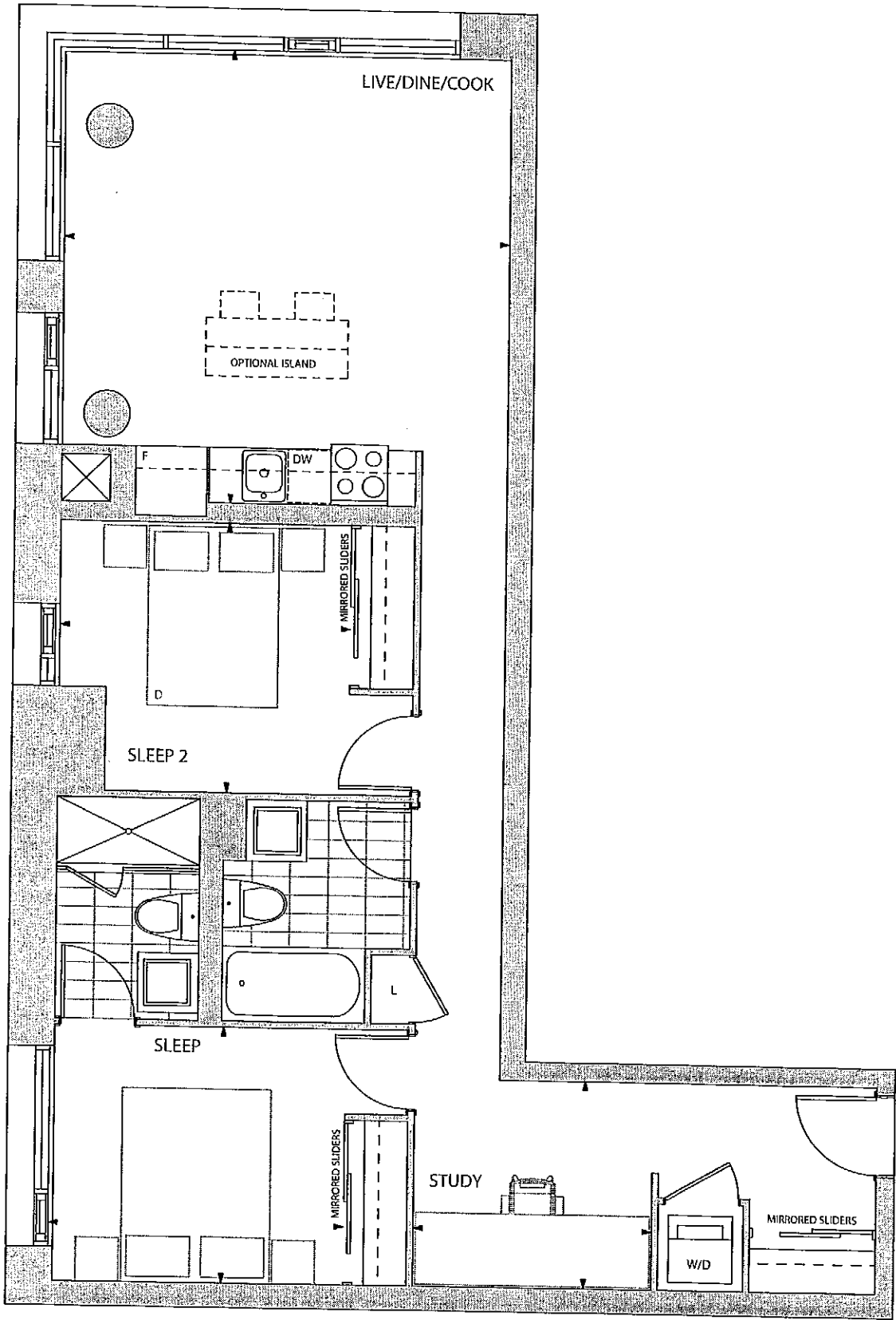
Purchaser Acknowledgement _____ Date _____

Suite# _____ Level _____ Unit# _____

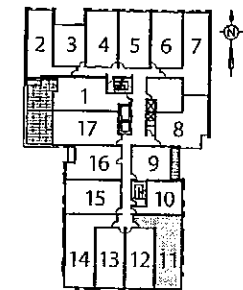
Dimensions, specifications, layouts (including tile patterns), window sizes, mullions, fixture representation, appliance locations, and materials are approximate only, may vary, and are subject to changes without notice as provided in the Agreement of Purchase and Sale. Plans may be reversed. Wall thickness will vary with floor levels reducing room dimensions accordingly. Prices are subject to change without notice. Errors and omissions excepted. Plans not to scale. February 2011

CARMELINA

SCHEDULE "C"



2 BEDROOM + STUDY
920 SQ. FT.



2 / 3 / 4

Suite Numbers 211 311 411
2nd to 4th Floor

Purchaser Acknowledgement

Date

Suite#

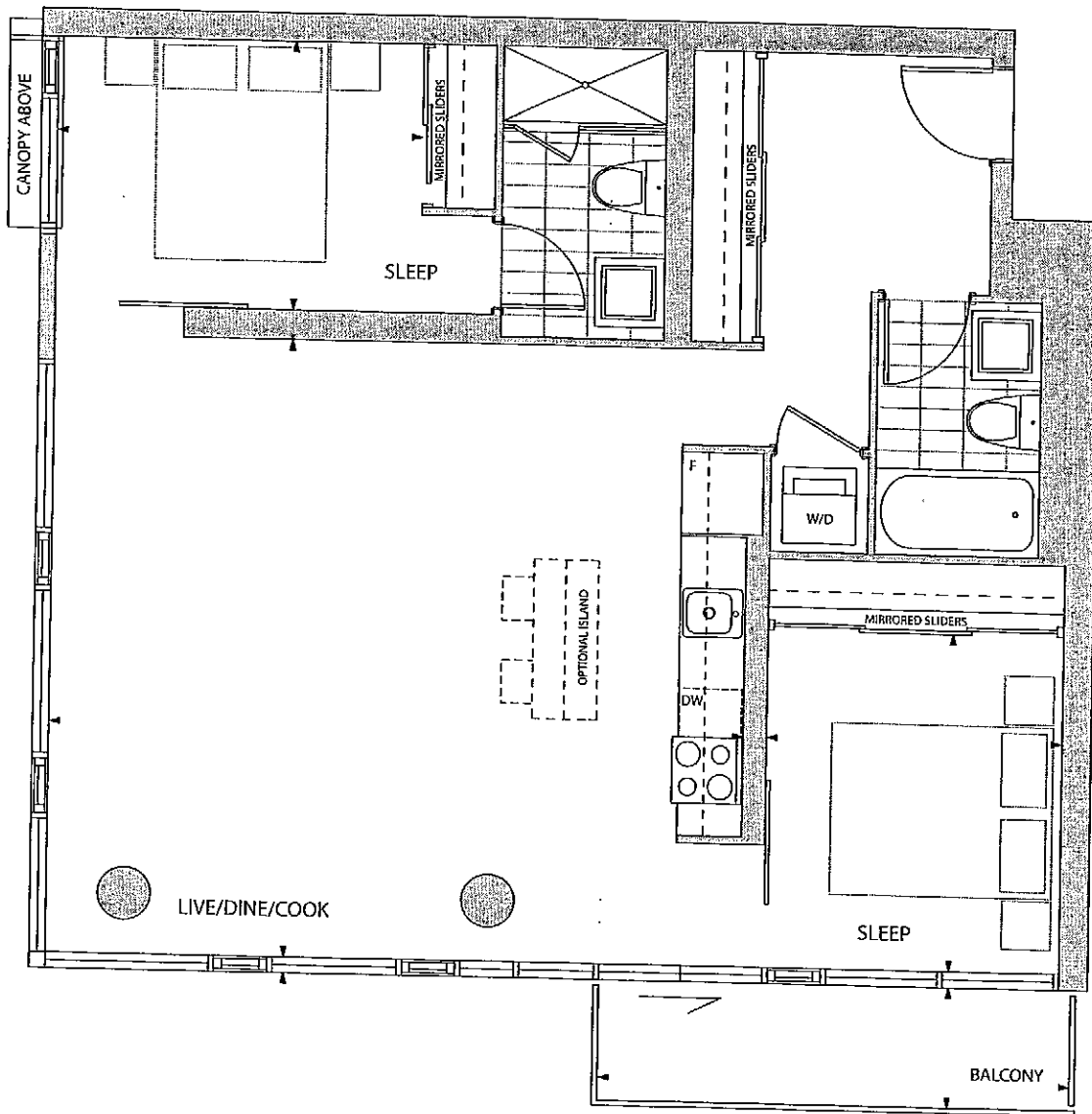
Level

Unit#

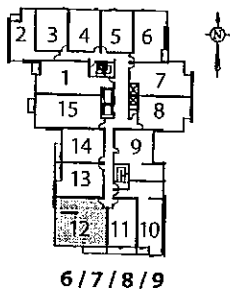
Dimensions, specifications, layouts (including tile patterns), window sizes, mullions, fixture representation, appliance locations, and materials are approximate only, may vary, and are subject to changes without notice as provided in the Agreement of Purchase and Sale. Plans may be reversed. Wall thickness will vary with floor levels reducing room dimensions accordingly. Prices are subject to change without notice. Errors and omissions excepted. Plans not to scale. February 2011

CARMELINA

SCHEDULE "C"



2 BEDROOM
933 SQ. FT.



Suite Numbers 612 712 812 912
6th to 9th Floor

Purchaser Acknowledgement

Date

Suite#

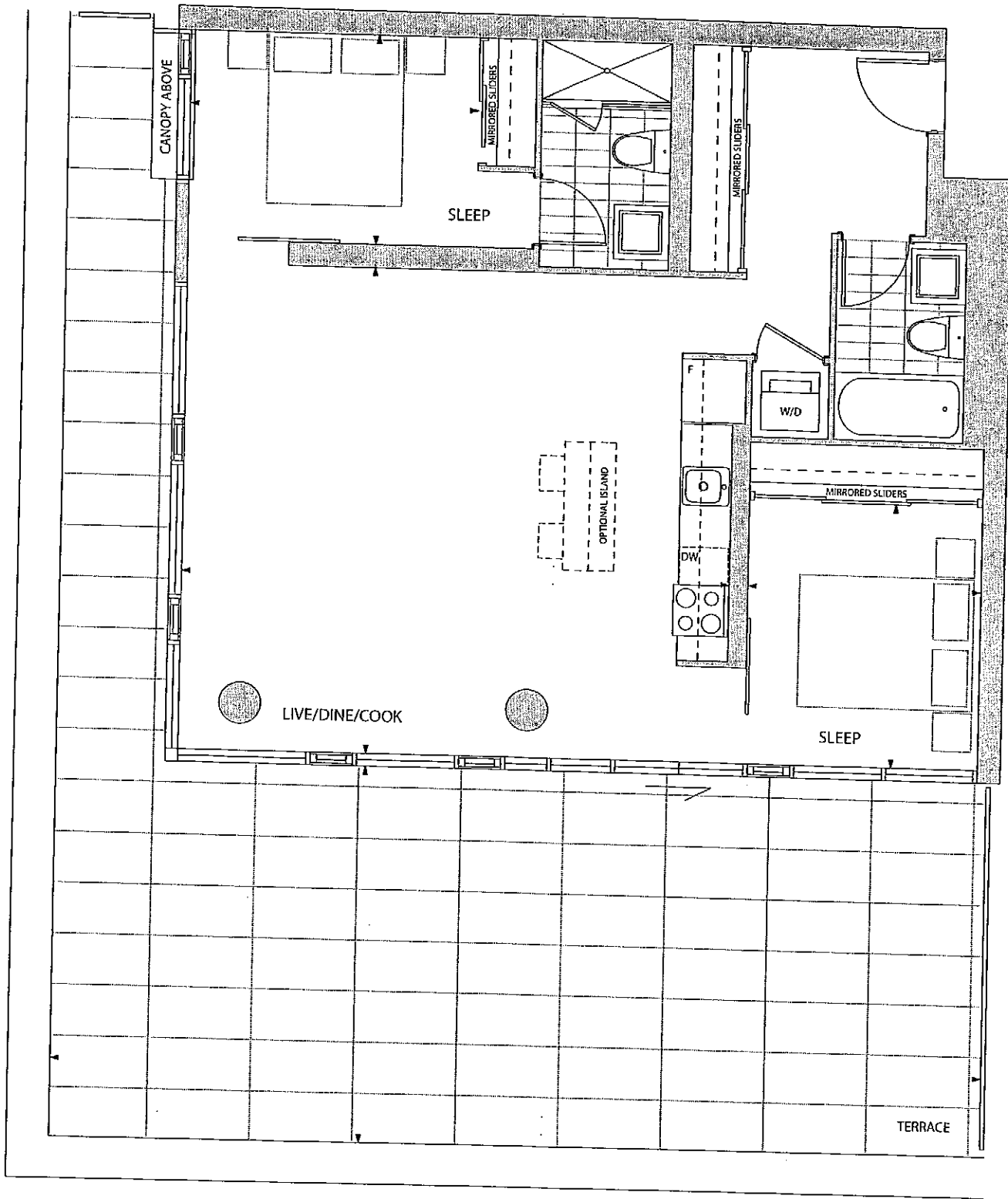
Level

Unit#

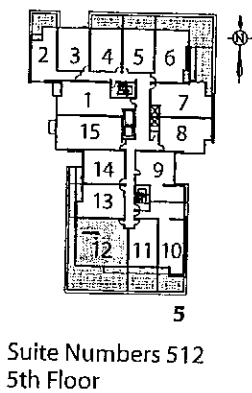
Dimensions, specifications, layouts (including tile patterns), window sizes, mullions, fixture representation, appliance locations, and materials are approximate only, may vary, and are subject to changes without notice as provided in the Agreement of Purchase and Sale. Plans may be reversed. Wall thickness will vary with floor levels reducing room dimensions accordingly. Prices are subject to change without notice. Errors and omissions excepted. Plans not to scale. February 2011

CARMELINA

SCHEDULE "C"



2 BEDROOM
933 SQ. FT.



Purchaser Acknowledgement

Date

Suite#

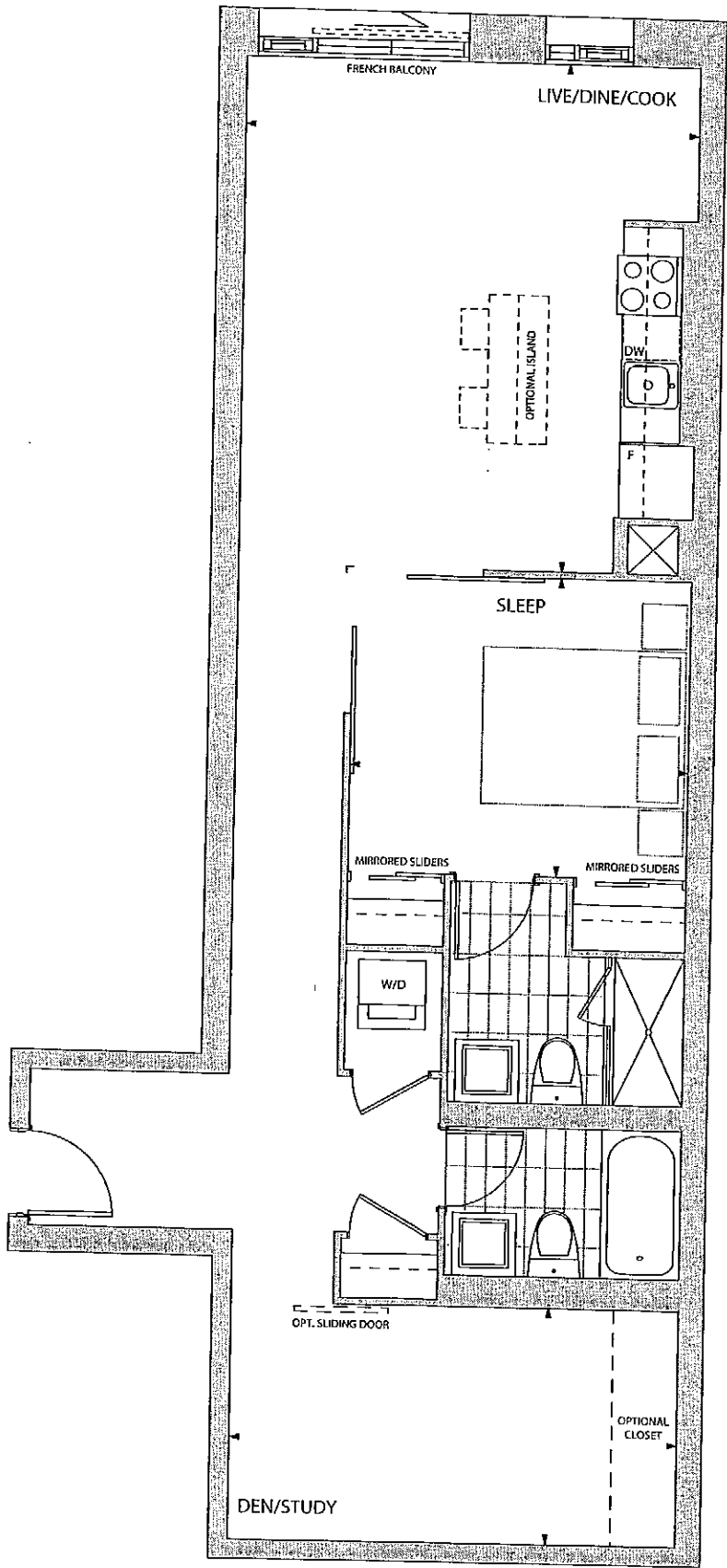
Level

Unit#

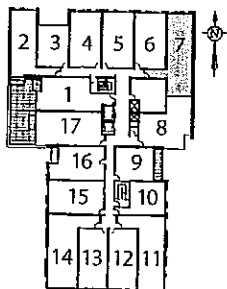
Dimensions, specifications, layouts (including tile patterns), window sizes, mullions, fixture representation, appliance locations, and materials are approximate only, may vary, and are subject to changes without notice as provided in the Agreement of Purchase and Sale. Plans may be reversed. Wall thickness will vary with floor levels reducing room dimensions accordingly. Prices are subject to change without notice. Errors and omissions excepted. Plans not to scale. February 2011

CARMELINA

SCHEDULE "C"



1 BEDROOM + DEN
988 SQ. FT.



2/3/4

Suite Numbers 207 307 407
2nd to 4th Floor

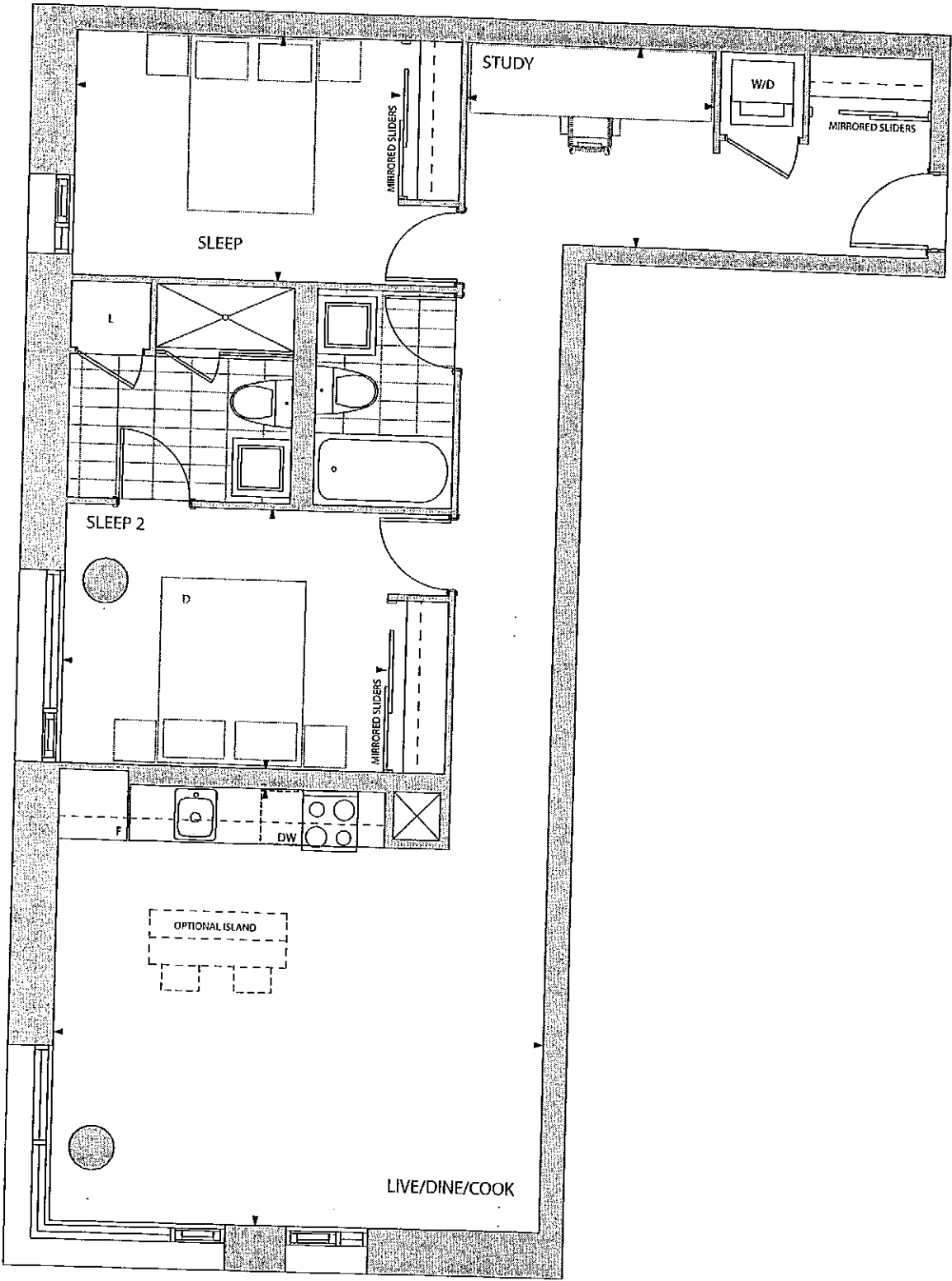
Purchaser Acknowledgement _____ Date _____

Suite# _____ Level _____ Unit# _____

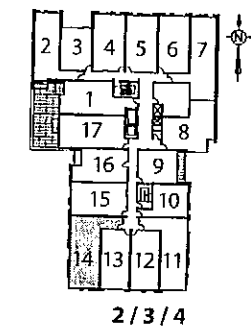
Dimensions, specifications, layouts (including tile patterns), window sizes, mullions, fixture representation, appliance locations, and materials are approximate only, may vary, and are subject to changes without notice as provided in the Agreement of Purchase and Sale. Plans may be reversed. Wall thickness will vary with floor levels reducing room dimensions accordingly. Prices are subject to change without notice. Errors and omissions excepted. Plans not to scale. February 2011

CARMELINA

SCHEDULE "C"



2 BEDROOM + STUDY
1,018 SQ. FT.



Suite Numbers 214 314 414
2nd to 4th Floor

Purchaser Acknowledgement

Date

Suite#

Level

Unit#

Dimensions, specifications, layouts (including tile patterns), window sizes, mullions, fixture representation, appliance locations, and materials are approximate only, may vary, and are subject to changes without notice as provided in the Agreement of Purchase and Sale. Plans may be reversed. Wall thickness will vary with floor levels reducing room dimensions accordingly. Prices are subject to change without notice. Errors and omissions excepted. Plans not to scale. February 2011