

# TREVOR FONTAINE — & ASSOCIATES

**Meet Trevor** — Whether you're buying or selling in Toronto and the GTA, you need more than an agent—you need a strategic partner. For well over a decade, I've delivered proven results by combining deep market knowledge with a straightforward, client-first approach. My team and I don't just facilitate transactions; we build tailored strategies to ensure your experience is seamless, successful, and stress-free. Partner with a trusted advisor who invests in the same market you do. Let's achieve your real estate goals together.

**Buying With Us** — Navigating the Toronto and GTA market requires a guide with firsthand experience and unwavering dedication. As a long-time personal real estate investor and advisor, I offer clients an intimate understanding of the market that goes beyond the listings. My team and I act as your ultimate advocates, providing attentive service and clear advice from the first showing to the final negotiation. We are committed to making your buying experience informative and stress-free, ensuring you find the perfect property on the best possible terms. Let's start your search with a trusted expert on your side.

**Selling With Us** — When it's time to sell your property, you deserve a team that combines expert marketing with masterful negotiation. With over a decade of success in Toronto and the GTA, I have a proven track record of securing exceptional results for my clients. My team and I create a customized strategy for every property, leveraging deep market insights and a vast network to attract the right buyers. We handle the complexities so you can focus on your next chapter with confidence. Let's discuss how we can maximize the value of your investment.

Trevor Fontaine, Sr Vice President, Sales  
Sotheby's International Realty Canada

email: [tfontaine@sothebysrealty.ca](mailto:tfontaine@sothebysrealty.ca)

**Sotheby's** | **Canada**  
INTERNATIONAL REALTY

SUITE 306  
SUITE 406

**RESIDENCES AT PINNACLE CENTRE**  
**BAY • HARBOUR • YONGE**

All areas and dimensions are approximate.  
All illustrations are artist's concept. E&E, JANUARY 20 14

AREA: 625 sq.ft.  
BALCONY: 89 sq.ft.  
TOTAL: 714 sq.ft.

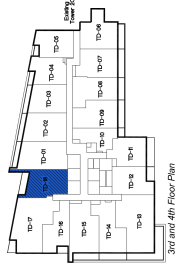
TOTAL:

# 1 BEDROOM + DEN

SUITE 318  
SUITE 418

# 33 BAY

RESIDENCES AT PINNACLE CENTRE  
BAY • HARBOUR • YONGE



ALL DIMENSIONS AND CONVERSIONS ARE APPROXIMATE.  
ALL INFORMATION IS FOR INFORMATION PURPOSES ONLY. JANUARY 2014

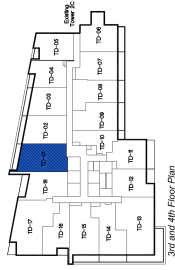
Developed by:  
**PINNACLE**  
INTERNATIONAL  
PERFECTION • PERFORMANCE

AREA: 674 sq.ft.  
BALCONY: 85 sq.ft.  
TOTAL: 759 sq.ft.

# 1 BEDROOM + DEN SUITE 401

# 33 BAY

RESIDENCES AT PINNACLE CENTRE  
BAY • HARBOUR • YONGE



3rd and 4th Floor Plan

ALL DIMENSIONS AND CONVERSIONS ARE APPROXIMATE.  
ALL INFORMATION IS FOR INFORMATION ONLY. JANUARY 2014



AREA: 763 sq.ft.  
BALCONY: 71 sq.ft.  
TOTAL: 834 sq.ft.

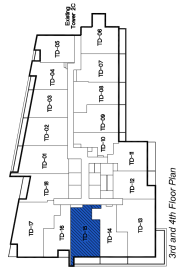
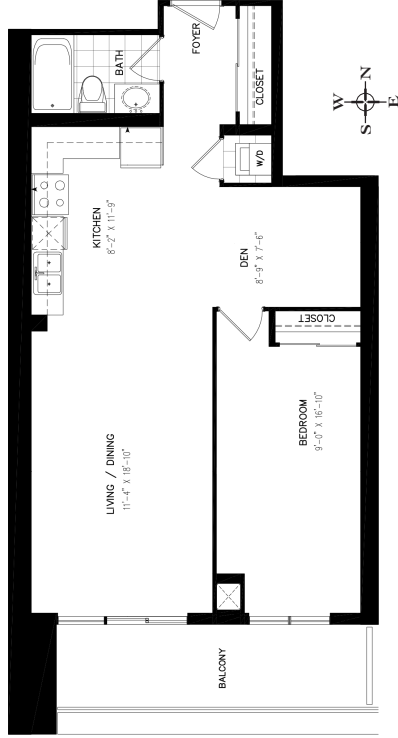
# 1 BEDROOM + DEN

SUITE 315  
SUITE 415

# 33 BAY

RESIDENCES AT PINNACLE CENTRE

BAY • HARBOUR • YONGE



ALL DIMENSIONS AND CONVERSIONS ARE APPROXIMATE.  
ALL INFORMATION IS FOR INFORMATION PURPOSES ONLY. JANUARY 2014

Developed by:  
**PINNACLE**  
INTERNATIONAL  
PERFECTION • PERFORMANCE

AREA: 799 sq.ft.  
BALCONY: 101 sq.ft.  
TOTAL: 900 sq.ft.

# Executive Residence 04

## 33 BAY

RESIDENCES AT PINNACLE CENTRE  
BAY • HARBOUR • YONGE



604	1404	2204	3004	3804
704	1504	2304	3104	3904
804	1604	2404	3204	4004
904	1704	2504	3304	4104
1004	1804	2604	3404	4204
1104	1904	2704	3504	4304
1204	2004	2804	3604	★
1304	2104	2904	3704	★



### 2 BED ROOM

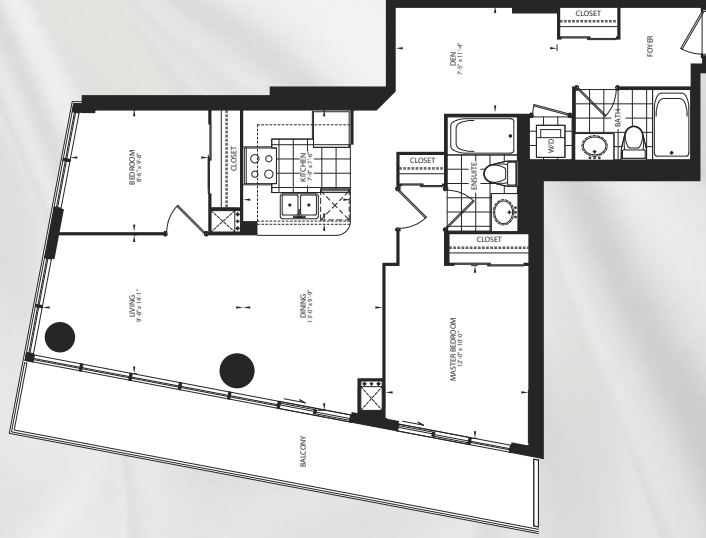
AREA 876 sq.ft. BALCONY 152 sq.ft. TOTAL 1,028 sq.ft.

# Executive Residence 03

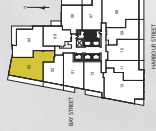
## 33 BAY

RESIDENCES AT PINNACLE CENTRE

BAY • HARBOUR • YONGE



603	1403	2203	3003	3803
703	1503	2303	3103	3903
803	1603	2403	3203	4003
903	1703	2503	3303	4103
1003	1803	2603	3403	4203
1103	1903	2703	3503	4303
1203	2003	2803	3603	*
1303	2103	2903	3703	*



2 BEDROOM + DEN

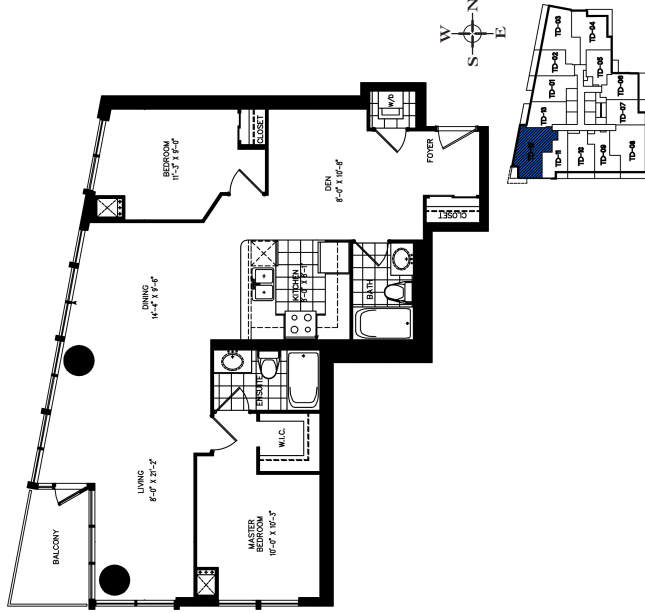
AREA 950 sq.ft. BALCONY 188 sq.ft. TOTAL 1,138 sq.ft.

## 2 BEDROOM + DEN

SUITE 512  
SUITE 612  
SUITE 712

# 33 BAY

RESIDENCES AT PINNACLE CENTRE  
BAY • HARBOUR • YONGE



Developed by:  
**PINNACLE**  
INTERNATIONAL  
PERFECTION • PERFORMANCE

AREA: 1051 sq.ft.  
BALCONY: 54 sq.ft.  
TOTAL: 1105 sq.ft.

