

# TREVOR FONTAINE — & ASSOCIATES

**Meet Trevor** — Whether you're buying or selling in Toronto and the GTA, you need more than an agent—you need a strategic partner. For well over a decade, I've delivered proven results by combining deep market knowledge with a straightforward, client-first approach. My team and I don't just facilitate transactions; we build tailored strategies to ensure your experience is seamless, successful, and stress-free. Partner with a trusted advisor who invests in the same market you do. Let's achieve your real estate goals together.

**Buying With Us** — Navigating the Toronto and GTA market requires a guide with firsthand experience and unwavering dedication. As a long-time personal real estate investor and advisor, I offer clients an intimate understanding of the market that goes beyond the listings. My team and I act as your ultimate advocates, providing attentive service and clear advice from the first showing to the final negotiation. We are committed to making your buying experience informative and stress-free, ensuring you find the perfect property on the best possible terms. Let's start your search with a trusted expert on your side.

**Selling With Us** — When it's time to sell your property, you deserve a team that combines expert marketing with masterful negotiation. With over a decade of success in Toronto and the GTA, I have a proven track record of securing exceptional results for my clients. My team and I create a customized strategy for every property, leveraging deep market insights and a vast network to attract the right buyers. We handle the complexities so you can focus on your next chapter with confidence. Let's discuss how we can maximize the value of your investment.

Trevor Fontaine, Sr Vice President, Sales  
Sotheby's International Realty Canada

email: [tfontaine@sothebysrealty.ca](mailto:tfontaine@sothebysrealty.ca)

**Sotheby's** | **Canada**  
INTERNATIONAL REALTY

# MON TAGE



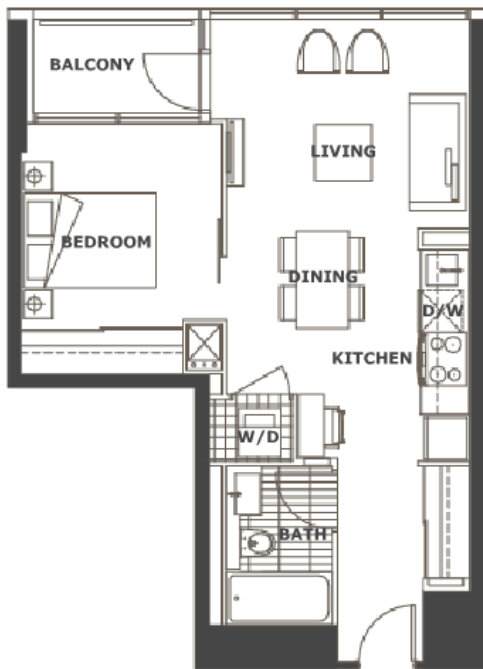
< PREVIOUS    NEXT >

1 bedroom

suite area    -    540 sq. ft.

balcony area    -    35 sq. ft.

**total area    -    575 sq. ft.**

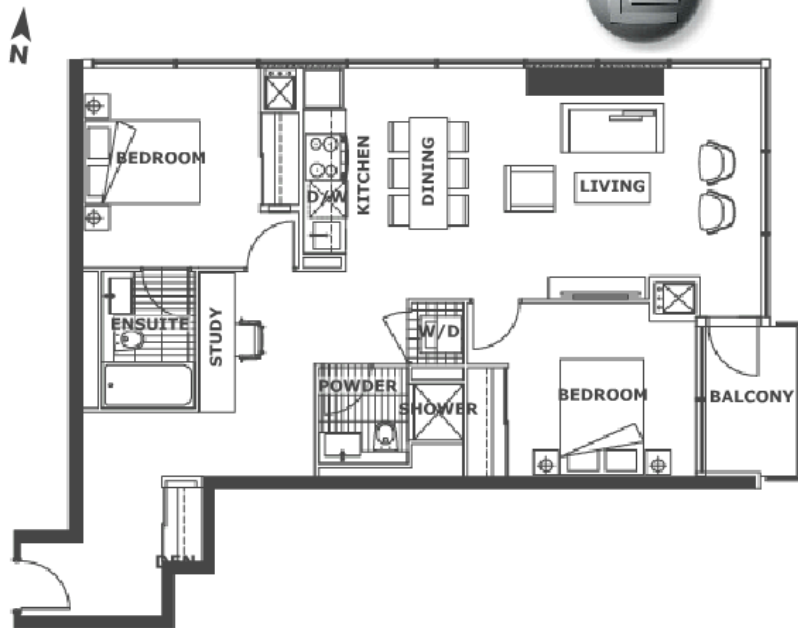


# MON TAGE



< PREVIOUS    NEXT >

2 bedroom + study  
suite area    - 933 sq. ft.  
balcony area - 39 sq. ft.  
**total area    - 972 sq. ft.**



# MON TAGE



< PREVIOUS    NEXT >

1 bedroom + den  
suite area    -    545 sq. ft.  
balcony area -    27 sq. ft.  
**total area    -    572 sq. ft.**



# MON TAGE



< PREVIOUS    NEXT >

1 bedroom + den  
suite area    - 628 sq. ft.  
balcony area - 33 sq. ft.  
**total area    - 661 sq. ft.**



# MON TAGE



< PREVIOUS    NEXT >

2 bedroom + den  
suite area - 950 sq. ft.  
balcony area - 38 sq. ft.  
**total area - 988 sq. ft.**

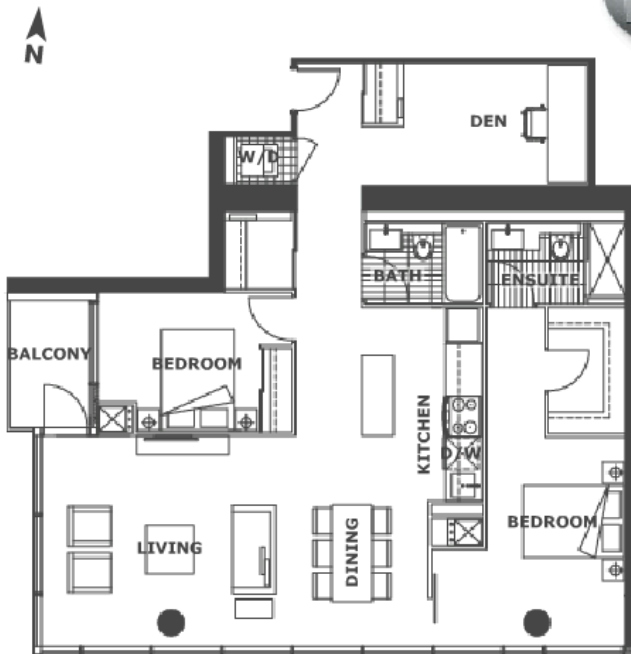


# MON TAGE



< PREVIOUS    NEXT >

2 bedroom + den  
suite area    - 1170 sq. ft.  
balcony area -    38 sq. ft.  
**total area    -1208 sq. ft.**



# MON TAGE



< PREVIOUS    NEXT >

1 bedroom + den  
suite area    -    628 sq. ft.  
balcony area    -    33 sq. ft.  

---

total area    -    661 sq. ft.



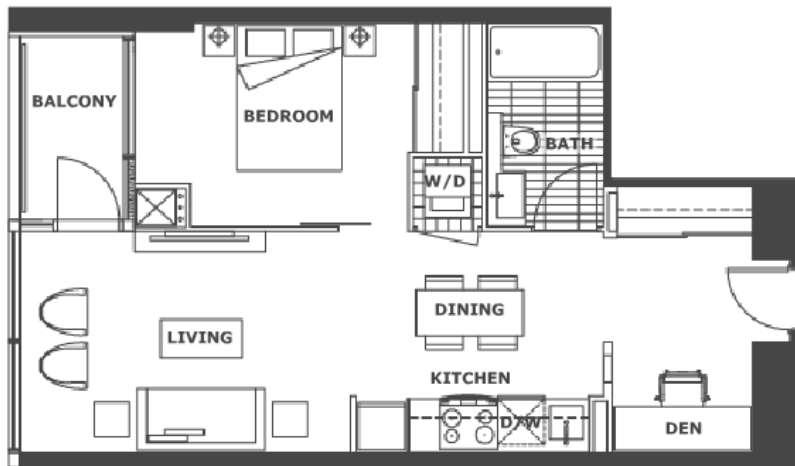


# MON TAGE



< PREVIOUS    NEXT >

1 bedroom + den  
suite area    -    555 sq. ft.  
balcony area    -    35 sq. ft.  
**total area    -    590 sq. ft.**

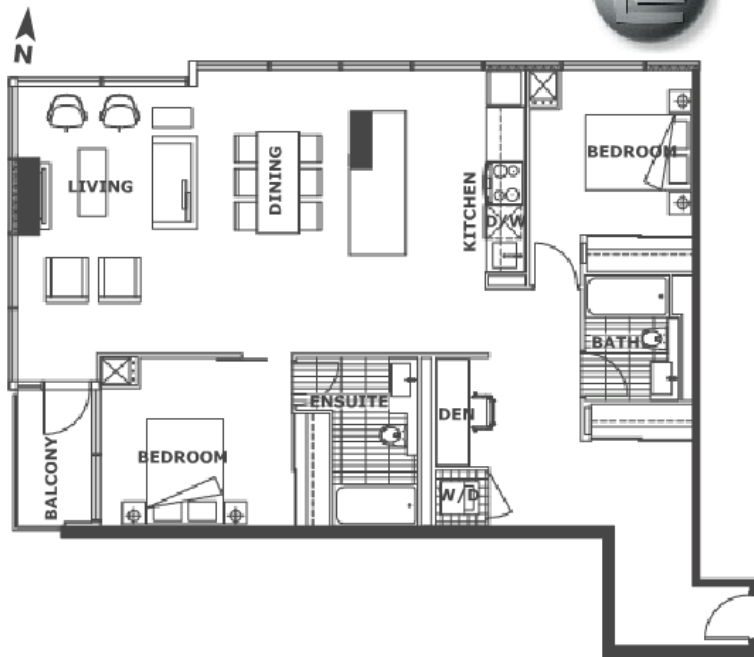


# MON TAGE



< PREVIOUS    NEXT >

2 bedroom + den  
suite area    - 1186 sq. ft.  
balcony area -    35 sq. ft.  
**total area    -1221 sq. ft.**

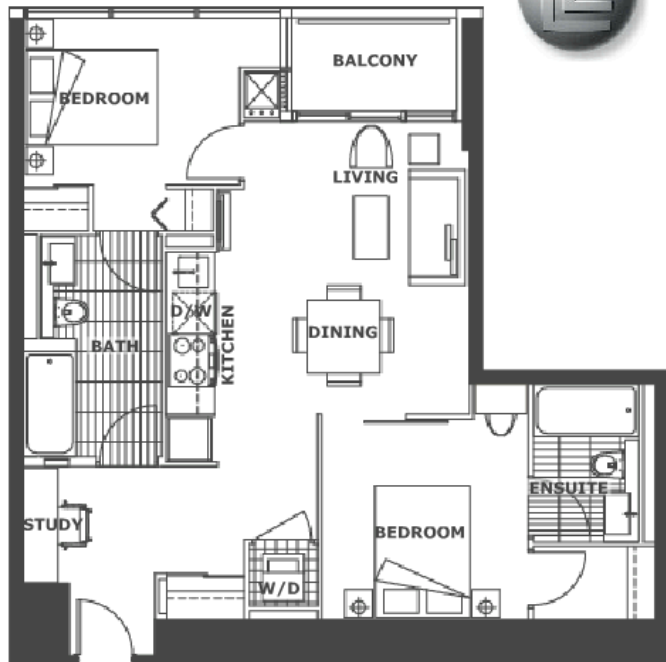


# MON TAGE

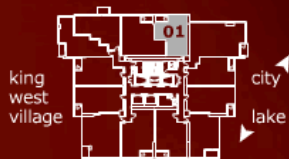


< PREVIOUS    NEXT >

2 bedroom + study  
suite area    -    783 sq. ft.  
balcony area    -    35 sq. ft.  
**total area    -    818 sq. ft.**



# MON TAGE



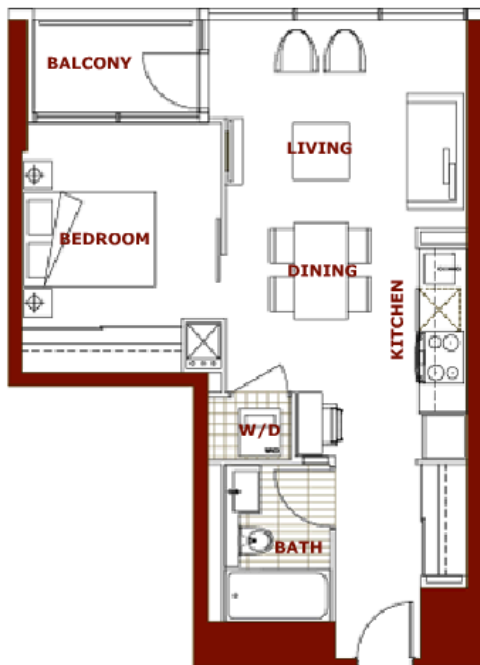
< PREVIOUS    NEXT >

1 bedroom

suite area    -    540 sq. ft.

balcony area    -    35 sq. ft.

**total area    -    575 sq. ft.**

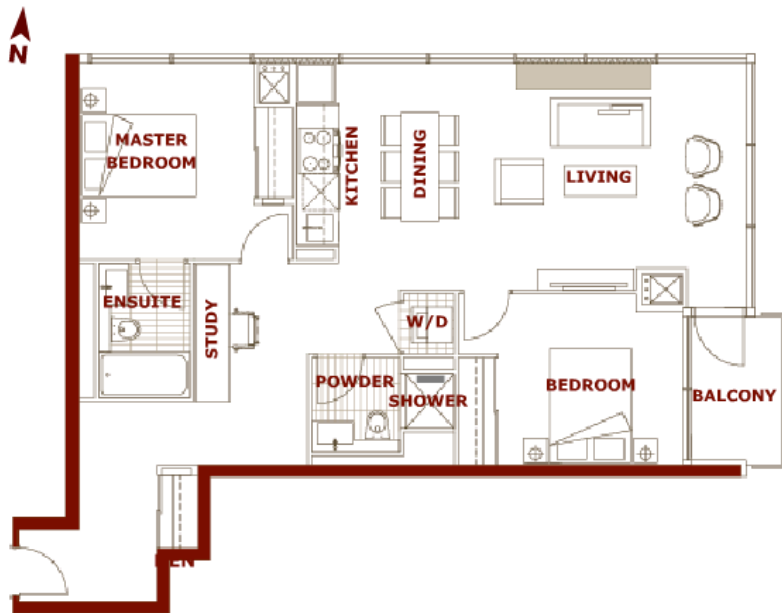


# MON TAGE



< PREVIOUS    NEXT >

2 bedroom + study  
suite area - 933 sq. ft.  
balcony area - 39 sq. ft.  
total area - 972 sq. ft.

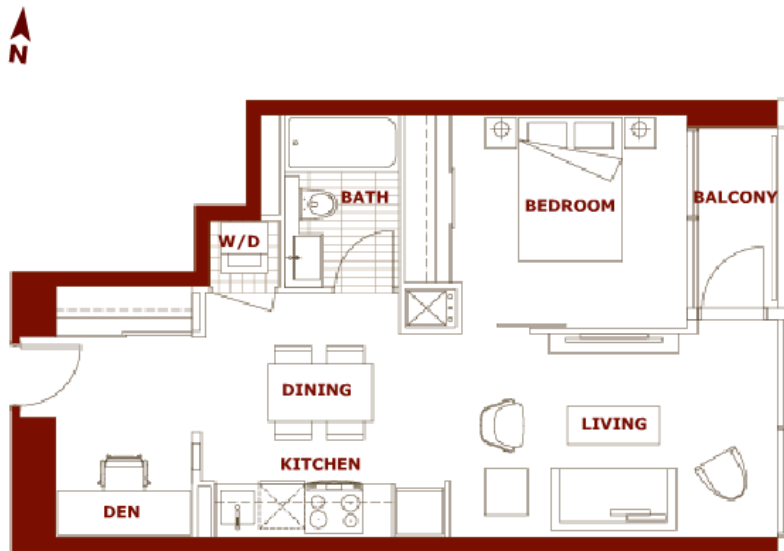


# MON TAGE



< PREVIOUS    NEXT >

1 bedroom + den  
suite area - 545 sq. ft.  
balcony area - 27 sq. ft.  
total area - 572 sq. ft.

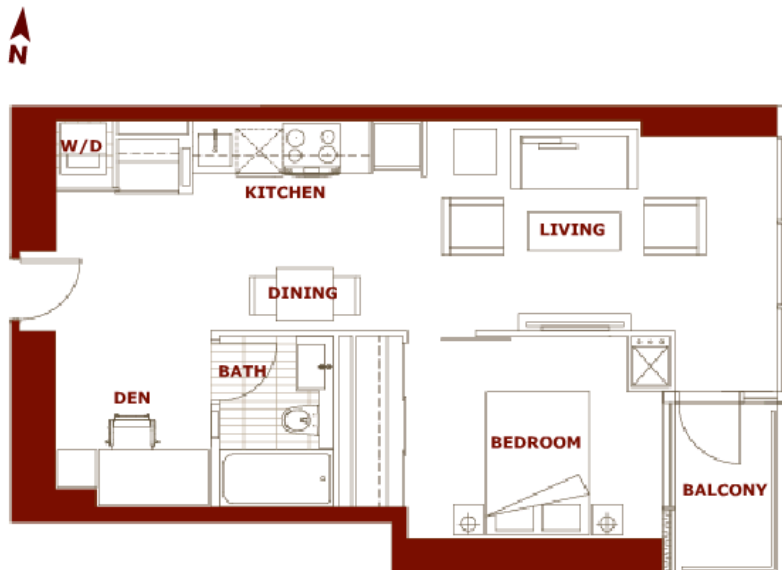


# MON TAGE



< PREVIOUS    NEXT >

1 bedroom + den  
suite area - 595 sq. ft.  
balcony area - 33 sq. ft.  
**total area - 628 sq. ft.**



# MON TAGE



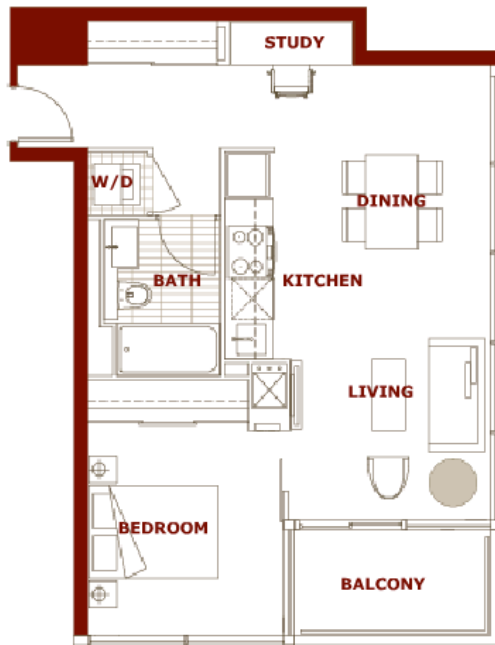
< PREVIOUS    NEXT >

1 bedroom + study

suite area - 590 sq. ft.

balcony area - 48 sq. ft.

**total area - 638 sq. ft.**





# MON TAGE



< PREVIOUS    NEXT >

1 bedroom + den

suite area    -    670 sq. ft.

balcony area    -    38 sq. ft.

**total area    -    708 sq. ft.**



# MON TAGE



< PREVIOUS    NEXT >

1 bedroom + den  
suite area - 670 sq. ft.  
balcony area - 38 sq. ft.  
**total area - 708 sq. ft.**



# MON TAGE



< PREVIOUS    NEXT >

2 bedroom

suite area - 762 sq. ft.

balcony area - 36 sq. ft.

**total area - 798 sq. ft.**



# MON TAGE



< PREVIOUS    NEXT >

1 bedroom + den

suite area - 595 sq. ft.

balcony area - 33 sq. ft.

**total area - 628 sq. ft.**



# MON TAGE



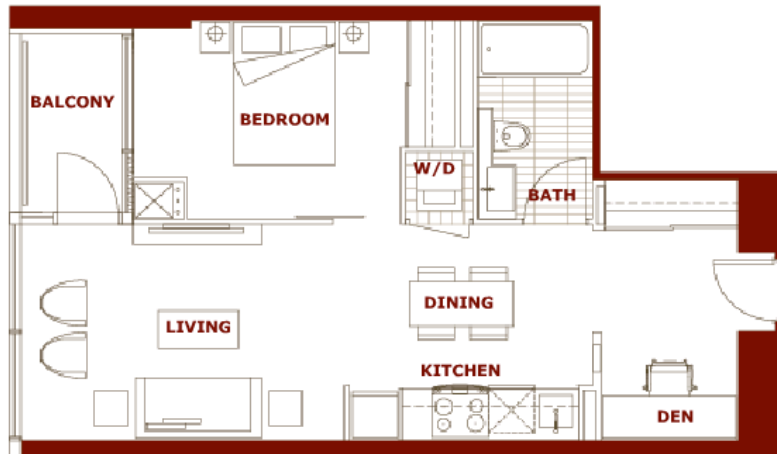
< PREVIOUS    NEXT >

1 bedroom + den

suite area - 555 sq. ft.

balcony area - 35 sq. ft.

**total area - 590 sq. ft.**



# MON TAGE



< PREVIOUS    NEXT >

1 bedroom + den

suite area    -    545 sq. ft.

balcony area    -    35 sq. ft.

**total area    -    580 sq. ft.**



# MON TAGE



< PREVIOUS    NEXT >

1 bedroom + study  
suite area    -    560 sq. ft.  
balcony area -    39 sq. ft.  
**total area    -    599 sq. ft.**



# MON TAGE



< PREVIOUS    NEXT >

2 bedroom + study  
suite area    -    783 sq. ft.  
balcony area    -    35 sq. ft.  
total area    -    818 sq. ft.

