

TREVOR FONTAINE — & ASSOCIATES

Meet Trevor — Whether you're buying or selling in Toronto and the GTA, you need more than an agent—you need a strategic partner. For well over a decade, I've delivered proven results by combining deep market knowledge with a straightforward, client-first approach. My team and I don't just facilitate transactions; we build tailored strategies to ensure your experience is seamless, successful, and stress-free. Partner with a trusted advisor who invests in the same market you do. Let's achieve your real estate goals together.

Buying With Us — Navigating the Toronto and GTA market requires a guide with firsthand experience and unwavering dedication. As a long-time personal real estate investor and advisor, I offer clients an intimate understanding of the market that goes beyond the listings. My team and I act as your ultimate advocates, providing attentive service and clear advice from the first showing to the final negotiation. We are committed to making your buying experience informative and stress-free, ensuring you find the perfect property on the best possible terms. Let's start your search with a trusted expert on your side.

Selling With Us — When it's time to sell your property, you deserve a team that combines expert marketing with masterful negotiation. With over a decade of success in Toronto and the GTA, I have a proven track record of securing exceptional results for my clients. My team and I create a customized strategy for every property, leveraging deep market insights and a vast network to attract the right buyers. We handle the complexities so you can focus on your next chapter with confidence. Let's discuss how we can maximize the value of your investment.

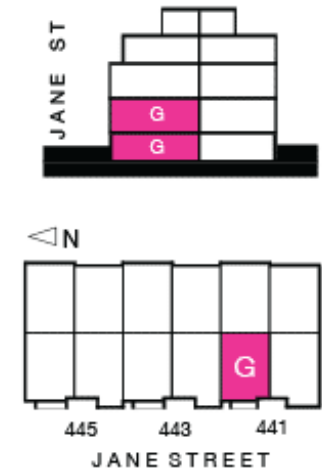
Trevor Fontaine, Sr Vice President, Sales
Sotheby's International Realty Canada

email: tfontaine@sothebysrealty.ca

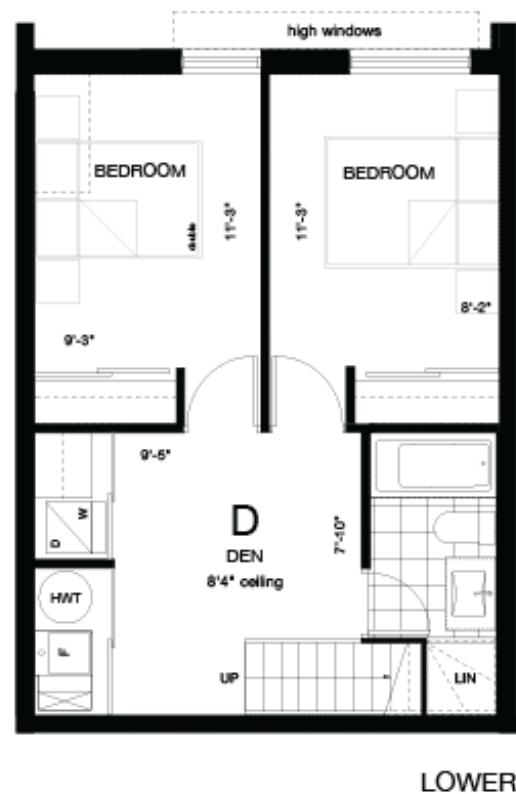
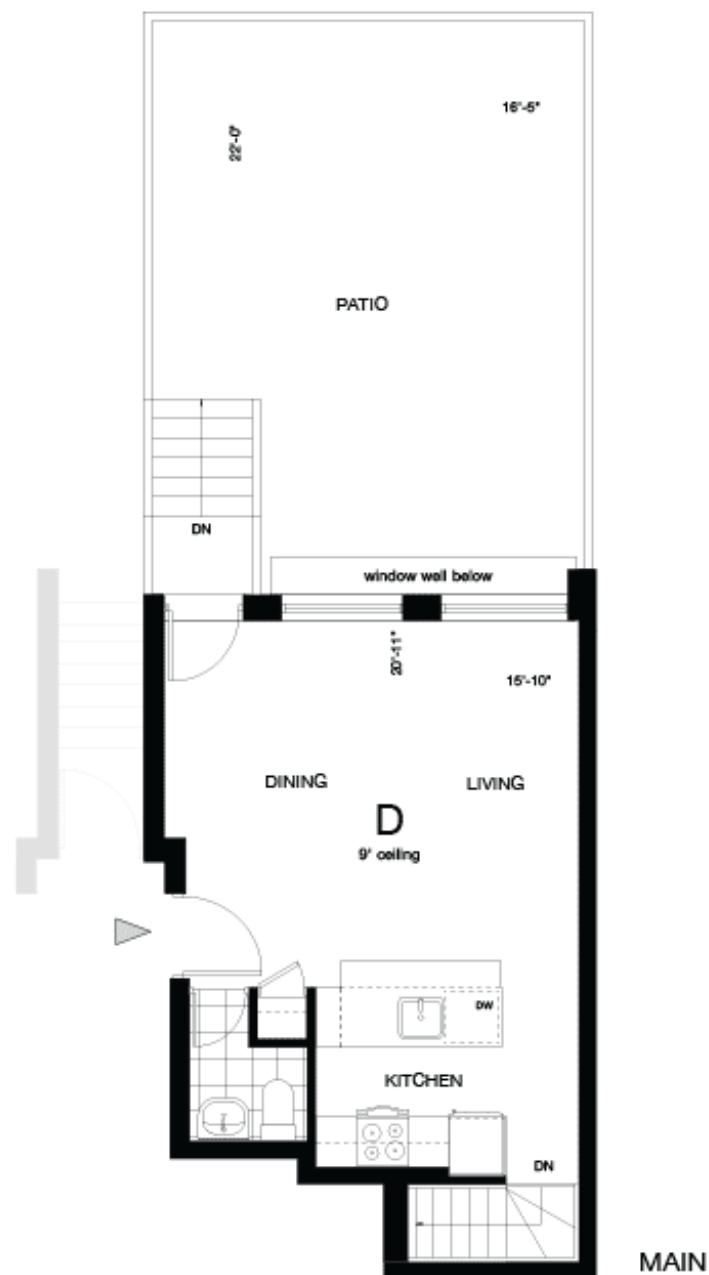
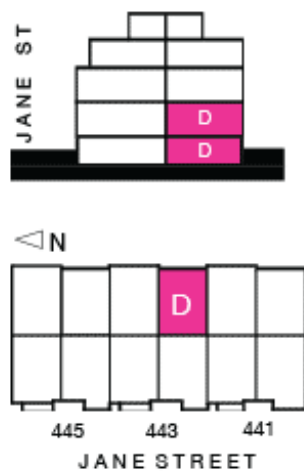
Sotheby's | **Canada**
INTERNATIONAL REALTY



443 JANE ST | THE CANDLE | **UNIT A** | 945 SF



441 JANE ST | THE BINARY | **UNIT G** | **881 SF**



443 JANE ST | THE TOWER | **UNIT D** | **859 SF**



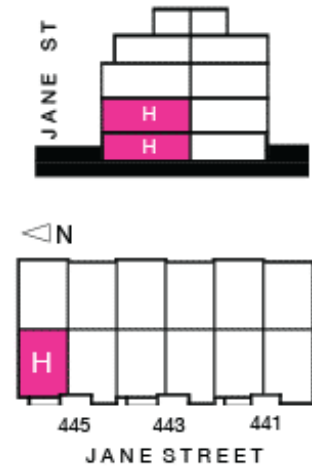
445 JANE ST | THE HOURGLASS | **UNIT D** | **859 SF**



LOWER



MAIN



445 JANE ST | THE CHIME | **UNIT H** | **923 SF**