

# ICON BEACH

WATERFRONT RESIDENCES

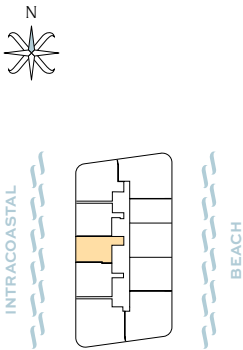
## Residence 05

1 Bedroom, 1 Bathroom

Interior: 948 SF / 88.07 M<sup>2</sup>

Balcony: 233 SF / 21.65 M<sup>2</sup>

Total: 1,181 SF / 109.72 M<sup>2</sup>



3724 S Ocean Drive Condominium, a Condominium within a portion of a building or within a multiple parcel building (the "Condominium") is developed by Diplomat Landings Phase 1 Owner, LLC ("Developer"). These renderings and depictions are conceptual only and are for the convenience of reference and including artists renderings. They should not be relied upon as representations, express or implied, of the final detail of the residences or the Condominium. The developer expressly reserves the right to make modifications, revisions, and changes it deems desirable in its sole and absolute discretion. All residence features and building amenities are subject to change, including, without limitation, changes in manufacturers, brands, amenities, services and/or the design team. The dimensions stated for this floor plan are approximate because there are various recognized methods for calculating the square footage of a unit. The square footage stated here is calculated from the exterior boundaries of the exterior walls to the centerline of interior demising walls without deductions for cutouts, curves, or architectural features. This method typically results in quoted dimensions greater than the dimensions that would be determined by using other accepted methods. The definition of "Unit" and the calculation method to be relied upon is set forth by the Developer in Developer's prospectus which method may result in a square footage calculation less than the result of the calculation method used here. Consult the Developer's prospectus to learn what is included with Unit purchase and to understand Unit dimensions. 2024 © Diplomat Landings Phase 1 Owner, LLC, with all rights reserved.

# ICON BEACH

WATERFRONT RESIDENCES

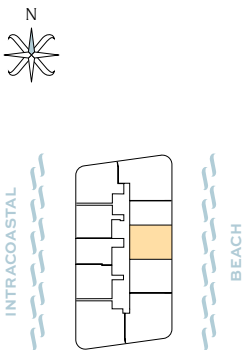
## Residence 06

2 Bedroom, 2 Bathroom

Interior: 1,310 SF / 121.70 M<sup>2</sup>

Balcony: 293 SF / 27.22 M<sup>2</sup>

Total: 1,603 SF / 148.92 M<sup>2</sup>



# ICON BEACH

WATERFRONT RESIDENCES

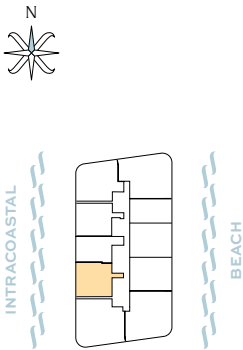
## Residence 07

2 Bedroom, 2 Bathroom

Interior: 1,145 SF / 106.37 M<sup>2</sup>

Balcony: 303 SF / 28.15 M<sup>2</sup>

Total: 1,448 SF / 134.52 M<sup>2</sup>



# ICON BEACH

WATERFRONT RESIDENCES

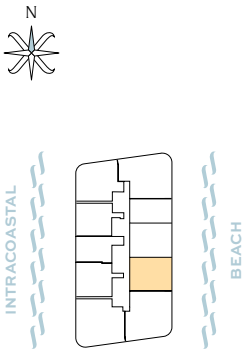
## Residence 08

2 Bedroom, 2 Bathroom

Interior: 1,310 SF / 121.70 M<sup>2</sup>

Balcony: 293 SF / 27.22 M<sup>2</sup>

Total: 1,603 SF / 148.92 M<sup>2</sup>



3724 S Ocean Drive Condominium, a Condominium within a portion of a building or within a multiple parcel building (the "Condominium") is developed by Diplomat Landings Phase 1 Owner, LLC ("Developer"). These renderings and depictions are conceptual only and are for the convenience of reference and including artists renderings. They should not be relied upon as representations, express or implied, of the final detail of the residences or the Condominium. The developer expressly reserves the right to make modifications, revisions, and changes it deems desirable in its sole and absolute discretion. All residence features and building amenities are subject to change, including, without limitation, changes in manufacturers, brands, amenities, services and/or the design team. The dimensions stated for this floor plan are approximate because there are various recognized methods for calculating the square footage of a unit. The square footage stated here is calculated from the exterior boundaries of the exterior walls to the centerline of interior demising walls without deductions for cutouts, curves, or architectural features. This method typically results in quoted dimensions greater than the dimensions that would be determined by using other accepted methods. The definition of "Unit" and the calculation method to be relied upon is set forth by the Developer in Developer's prospectus which method may result in a square footage calculation less than the result of the calculation method used here. Consult the Developer's prospectus to learn what is included with Unit purchase and to understand Unit dimensions. 2024 © Diplomat Landings Phase 1 Owner, LLC, with all rights reserved.

# ICON BEACH

WATERFRONT RESIDENCES

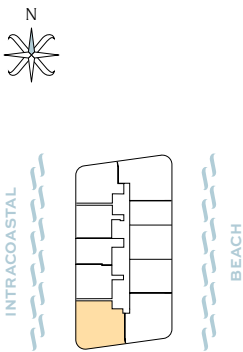
## Residence 09

3 Bedroom, 3 Bathroom

Interior: 1,725 SF / 160.26 M<sup>2</sup>

Balcony: 665 SF / 61.78 M<sup>2</sup>

Total: 2,390 SF / 222.04 M<sup>2</sup>



# ICON BEACH

WATERFRONT RESIDENCES

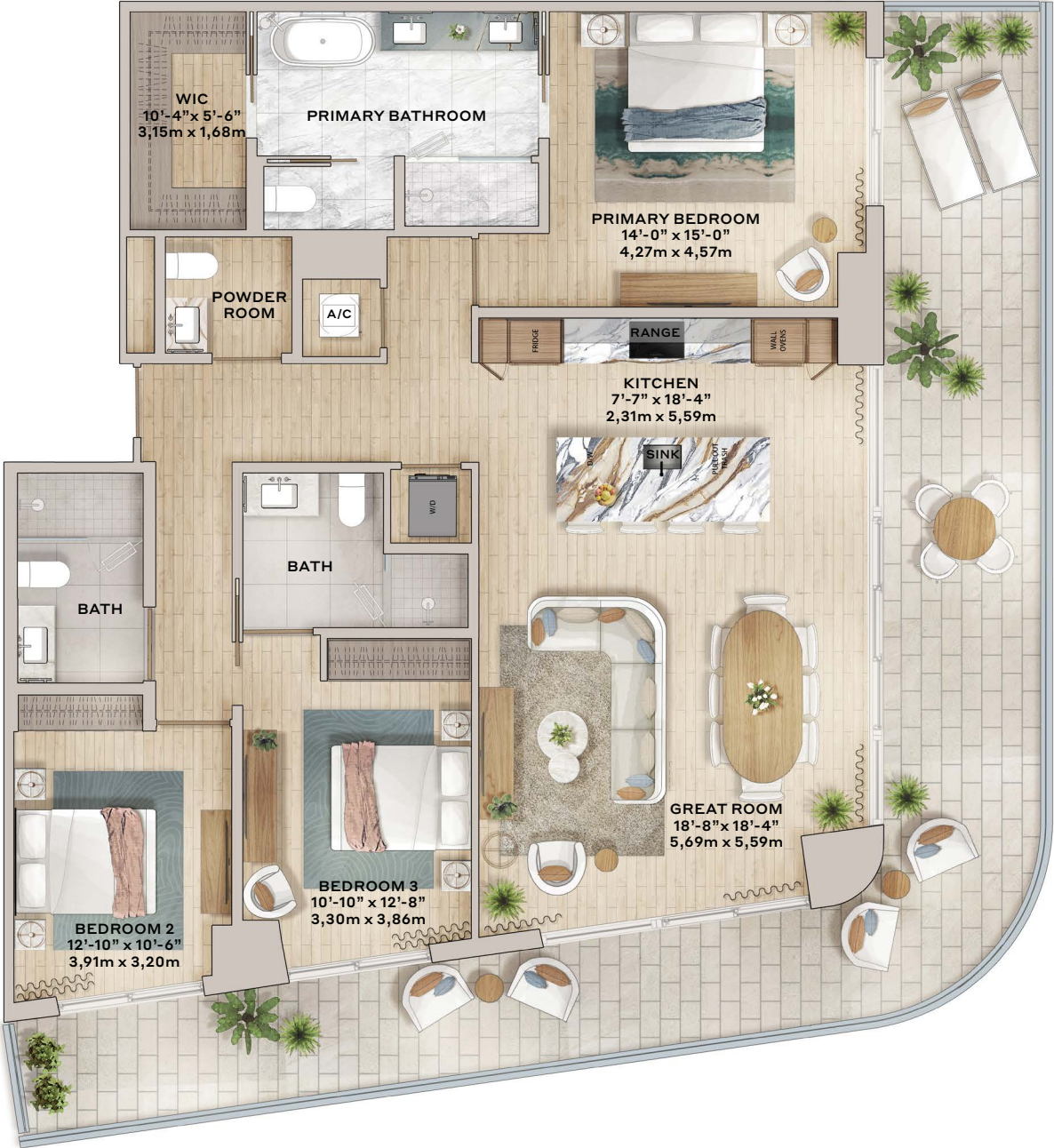
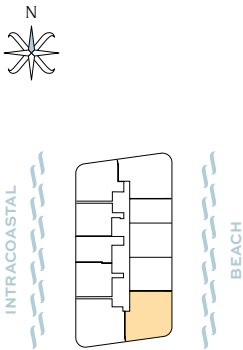
## Residence 10

3 Bedroom, 3.5 Bathroom

Interior: 1,738 SF / 161.47 M<sup>2</sup>

Balcony: 617 SF / 57.32 M<sup>2</sup>

Total: 2,355 SF / 218.79 M<sup>2</sup>



3724 S Ocean Drive Condominium, a Condominium within a portion of a building or within a multiple parcel building (the "Condominium") is developed by Diplomat Landings Phase 1 Owner, LLC ("Developer"). These renderings and depictions are conceptual only and are for the convenience of reference and including artists renderings. They should not be relied upon as representations, express or implied, of the final detail of the residences or the Condominium. The developer expressly reserves the right to make modifications, revisions, and changes it deems desirable in its sole and absolute discretion. All residence features and building amenities are subject to change, including, without limitation, changes in manufacturers, brands, amenities, services and/or the design team. The dimensions stated for this floor plan are approximate because there are various recognized methods for calculating the square footage of a unit. The square footage stated here is calculated from the exterior boundaries of the exterior walls to the centerline of interior demising walls without deductions for cutouts, curves, or architectural features. This method typically results in quoted dimensions greater than the dimensions that would be determined by using other accepted methods. The definition of "Unit" and the calculation method to be relied upon is set forth by the Developer in Developer's prospectus which method may result in a square footage calculation less than the result of the calculation method used here. Consult the Developer's prospectus to learn what is included with Unit purchase and to understand Unit dimensions. 2024 © Diplomat Landings Phase 1 Owner, LLC, with all rights reserved.

# ICON BEACH

WATERFRONT RESIDENCES

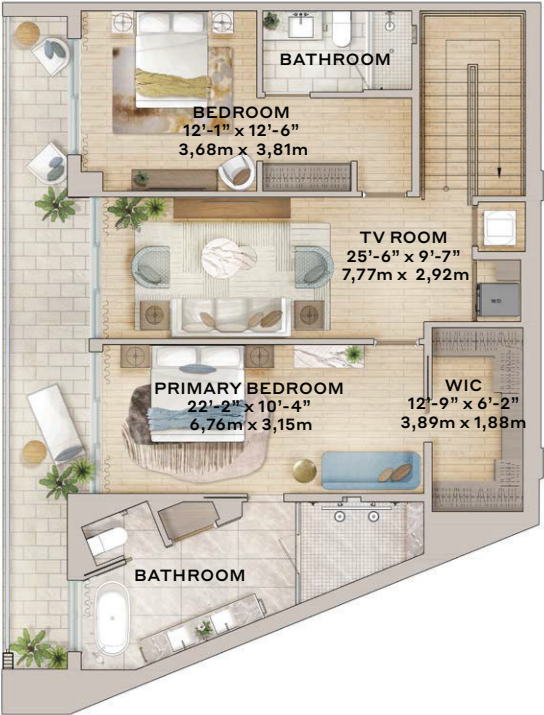
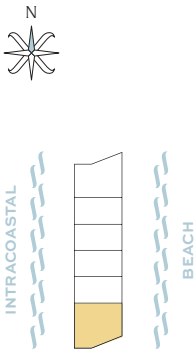
## TH1

3 Bedroom, 3.5 Bathroom

Interior: 2,540 SF / 235.97 M<sup>2</sup>

Balcony: 1,225 SF / 113.81 M<sup>2</sup>

Total: 3,765 SF / 349.78 M<sup>2</sup>



2ND LEVEL



GROUND FLOOR



3724 S Ocean Drive Condominium, a Condominium within a portion of a building or within a multiple parcel building (the "Condominium") is developed by Diplomat Landings Phase 1 Owner, LLC ("Developer"). These renderings and depictions are conceptual only and are for the convenience of reference and including artists renderings. They should not be relied upon as representations, express or implied, of the final detail of the residences or the Condominium. The developer expressly reserves the right to make modifications, revisions, and changes it deems desirable in its sole and absolute discretion. All residence features and building amenities are subject to change, including, without limitation, changes in manufacturers, brands, amenities, services and/or the design team. The dimensions stated for this floor plan are approximate because there are various recognized methods for calculating the square footage of a unit. The square footage stated here is calculated from the exterior boundaries of the exterior walls to the centerline of interior demising walls without deductions for cutouts, curves, or architectural features. This method typically results in quoted dimensions greater than the dimensions that would be determined by using other accepted methods. The definition of "Unit" and the calculation method to be relied upon is set forth by the Developer in Developer's prospectus which method may result in a square footage calculation less than the result of the calculation method used here. Consult the Developer's prospectus to learn what is included with Unit purchase and to understand Unit dimensions. 2024 © Diplomat Landings Phase 1 Owner, LLC, with all rights reserved.

# ICON BEACH

WATERFRONT RESIDENCES

## TH2—5

2 Bedroom, 2.5 Bathroom

Interior: 1,835 SF / 170.48 M<sup>2</sup>

Balcony: 603 SF / 56.02 M<sup>2</sup>

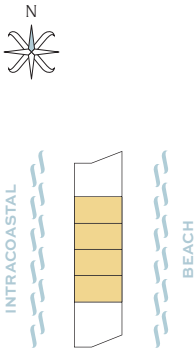
Total: 2,438 SF / 226.50 M<sup>2</sup>



2ND LEVEL



GROUND FLOOR



# ICON BEACH

WATERFRONT RESIDENCES

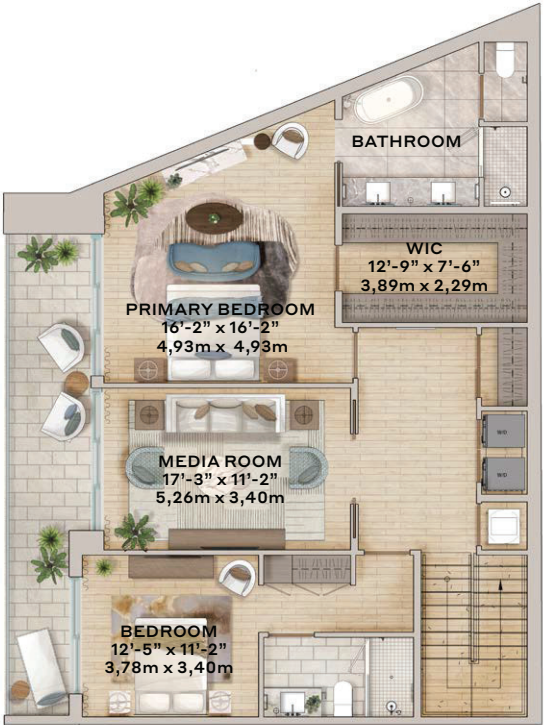
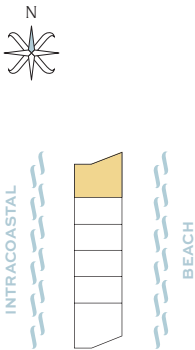
## TH6

3 Bedroom, 3.5 Bathroom

Interior: 2,580 SF / 239.69 M<sup>2</sup>

Balcony: 941 SF / 87.42 M<sup>2</sup>

Total: 3,521 SF / 327.11 M<sup>2</sup>



2ND LEVEL



GROUND FLOOR



# ICON BEACH

WATERFRONT RESIDENCES

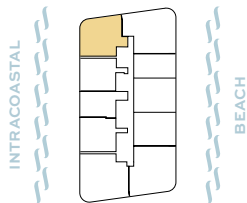
## Residence 01

2 Bedroom, 2 Bathroom

Interior: 1,295 SF / 120.31 M<sup>2</sup>

Balcony: 522 SF / 48.50 M<sup>2</sup>

Total: 1,817 SF / 168.80 M<sup>2</sup>



# ICON BEACH

WATERFRONT RESIDENCES

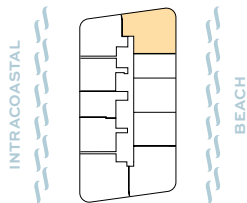
## Residence 02

3 Bedroom, 3 Bathroom

Interior: 1,695 SF / 157.47 M<sup>2</sup>

Balcony: 670 SF / 62.25 M<sup>2</sup>

Total: 2,365 SF / 219.72 M<sup>2</sup>



3724 S Ocean Drive Condominium, a Condominium within a portion of a building or within a multiple parcel building (the "Condominium") is developed by Diplomat Landings Phase 1 Owner, LLC ("Developer"). These renderings and depictions are conceptual only and are for the convenience of reference and including artists renderings. They should not be relied upon as representations, express or implied, of the final detail of the residences or the Condominium. The developer expressly reserves the right to make modifications, revisions, and changes it deems desirable in its sole and absolute discretion. All residence features and building amenities are subject to change, including, without limitation, changes in manufacturers, brands, amenities, services and/or the design team. The dimensions stated for this floor plan are approximate because there are various recognized methods for calculating the square footage of a unit. The square footage stated here is calculated from the exterior boundaries of the exterior walls to the centerline of interior demising walls without deductions for cutouts, curves, or architectural features. This method typically results in quoted dimensions greater than the dimensions that would be determined by using other accepted methods. The definition of "Unit" and the calculation method to be relied upon is set forth by the Developer in Developer's prospectus which method may result in a square footage calculation less than the result of the calculation method used here. Consult the Developer's prospectus to learn what is included with Unit purchase and to understand Unit dimensions. 2024 © Diplomat Landings Phase 1 Owner, LLC, with all rights reserved.

# ICON BEACH

WATERFRONT RESIDENCES

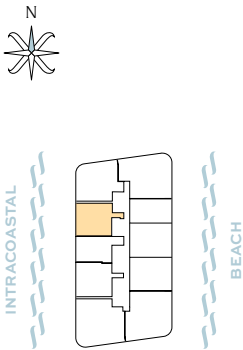
## Residence 03

2 Bedroom, 2 Bathroom

Interior: 1,152 SF / 107.02 M<sup>2</sup>

Balcony: 292 SF / 27.13 M<sup>2</sup>

Total: 1,444 SF / 134.15 M<sup>2</sup>



# ICON BEACH

WATERFRONT RESIDENCES

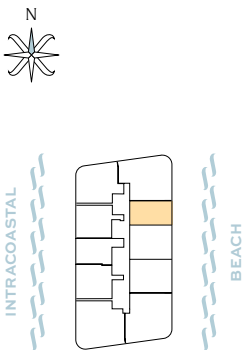
## Residence 04

1 Bedroom + 1 Den, 2 Bathroom

Interior: 945 SF / 87.79 M<sup>2</sup>

Balcony: 211 SF / 19.60 M<sup>2</sup>

Total: 1,156 SF / 107.40 M<sup>2</sup>



3724 S Ocean Drive Condominium, a Condominium within a portion of a building or within a multiple parcel building (the "Condominium") is developed by Diplomat Landings Phase 1 Owner, LLC ("Developer"). These renderings and depictions are conceptual only and are for the convenience of reference and including artists renderings. They should not be relied upon as representations, express or implied, of the final detail of the residences or the Condominium. The developer expressly reserves the right to make modifications, revisions, and changes it deems desirable in its sole and absolute discretion. All residence features and building amenities are subject to change, including, without limitation, changes in manufacturers, brands, amenities, services and/or the design team. The dimensions stated for this floor plan are approximate because there are various recognized methods for calculating the square footage of a unit. The square footage stated here is calculated from the exterior boundaries of the exterior walls to the centerline of interior demising walls without deductions for cutouts, curves, or architectural features. This method typically results in quoted dimensions greater than the dimensions that would be determined by using other accepted methods. The definition of "Unit" and the calculation method to be relied upon is set forth by the Developer in Developer's prospectus which method may result in a square footage calculation less than the result of the calculation method used here. Consult the Developer's prospectus to learn what is included with Unit purchase and to understand Unit dimensions. 2024 © Diplomat Landings Phase 1 Owner, LLC, with all rights reserved.