

# TREVOR FONTAINE — & ASSOCIATES

**Meet Trevor** — Whether you're buying or selling in Toronto and the GTA, you need more than an agent—you need a strategic partner. For well over a decade, I've delivered proven results by combining deep market knowledge with a straightforward, client-first approach. My team and I don't just facilitate transactions; we build tailored strategies to ensure your experience is seamless, successful, and stress-free. Partner with a trusted advisor who invests in the same market you do. Let's achieve your real estate goals together.

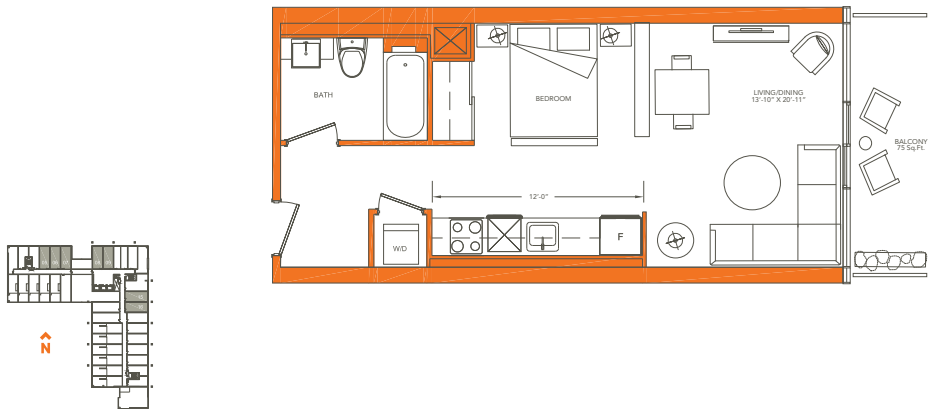
**Buying With Us** — Navigating the Toronto and GTA market requires a guide with firsthand experience and unwavering dedication. As a long-time personal real estate investor and advisor, I offer clients an intimate understanding of the market that goes beyond the listings. My team and I act as your ultimate advocates, providing attentive service and clear advice from the first showing to the final negotiation. We are committed to making your buying experience informative and stress-free, ensuring you find the perfect property on the best possible terms. Let's start your search with a trusted expert on your side.

**Selling With Us** — When it's time to sell your property, you deserve a team that combines expert marketing with masterful negotiation. With over a decade of success in Toronto and the GTA, I have a proven track record of securing exceptional results for my clients. My team and I create a customized strategy for every property, leveraging deep market insights and a vast network to attract the right buyers. We handle the complexities so you can focus on your next chapter with confidence. Let's discuss how we can maximize the value of your investment.

Trevor Fontaine, Sr Vice President, Sales  
Sotheby's International Realty Canada

email: [tfontaine@sothebysrealty.ca](mailto:tfontaine@sothebysrealty.ca)

**Sotheby's** | **Canada**  
INTERNATIONAL REALTY



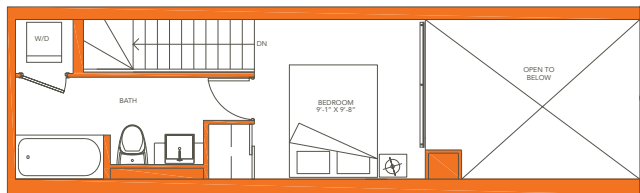
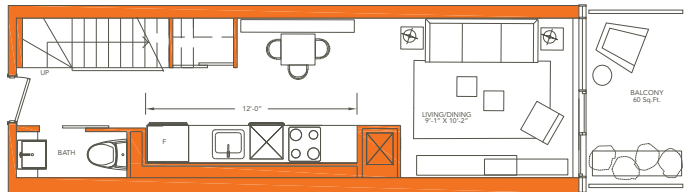
**level 2-mezzanine**

All dimensions, specifications and drawings are approximate.  
Actual square footage may vary from the stated floor plan. E. & D. E. Furniture not included.

# LML545live

## one bedroom

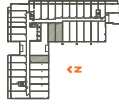
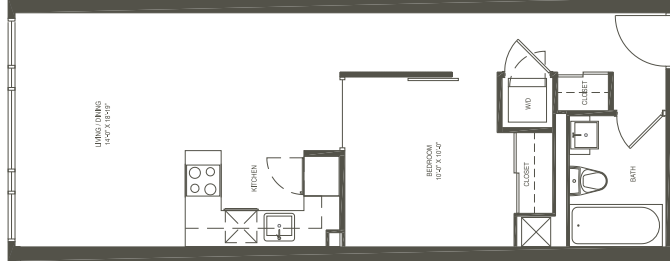
545 sq.ft. + 60 sq.ft. balcony = 605 sq.ft. living space



level 3-7

All dimensions, specifications and drawings are approximate.  
Actual square footage may vary from the stated floor plan. E. & D. E. Furniture not included.

one bedroom  
580 sq.ft. living space  
**LML580live**

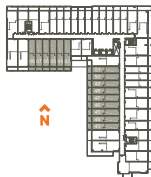
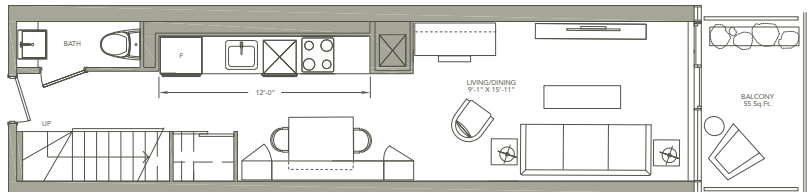


All dimensions, floor plans and drawings are approximate.  
Actual floor plans may vary from the floor plan shown. E. & O. E. Furniture not included.

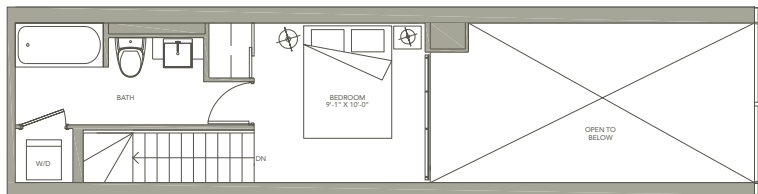
level 2

# LML620live

one bedroom  
620 sq.ft. + 55 sq.ft balcony = 675 sq.ft living space



level 3-7

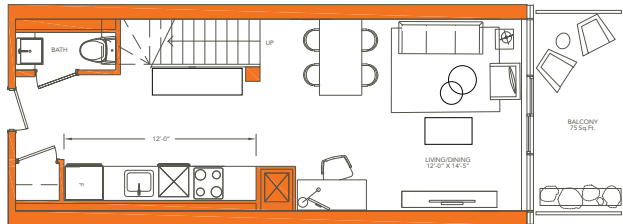


All dimensions, specifications and drawings are approximate.  
Actual square footage may vary from the stated floor plan. E. & D. I. Furniture not included.

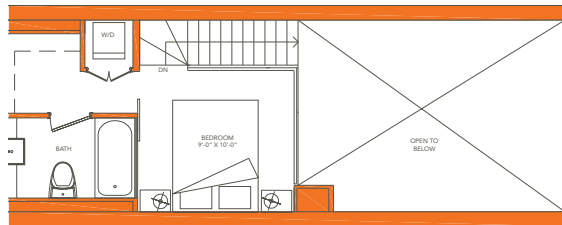
# LML665live

## one bedroom

665 sq.ft. + 75 sq.ft. balcony = 740 sq.ft. living space



level 3-7

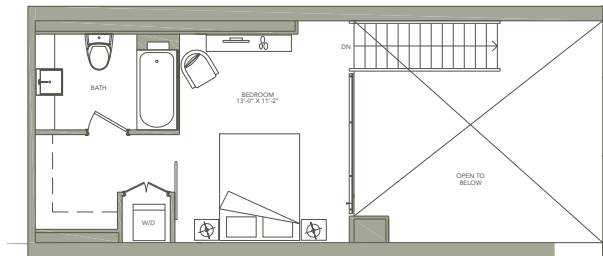
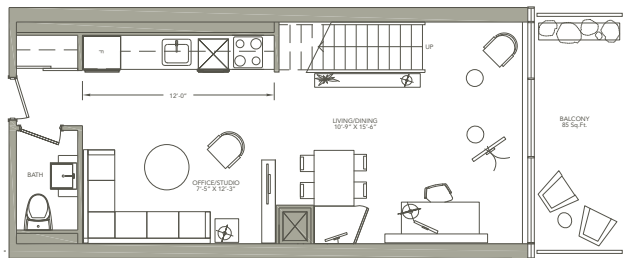


All dimensions, specifications and drawings are approximate.  
Actual square footage may vary from the stated floor plan. E. & D. E. Furniture not included.

# LML805work

one bedroom + office

805 sq.ft. + 85 sq.ft. balcony = 890 sq.ft. living space



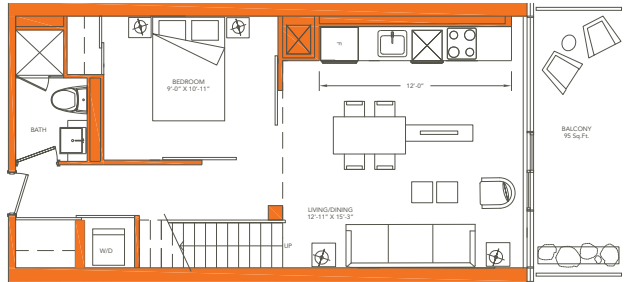
level 3-7

All dimensions, specifications and drawings are approximate.  
Actual square footage may vary from the stated floor plan. E. & D. I. Furniture not included.

# LML890live

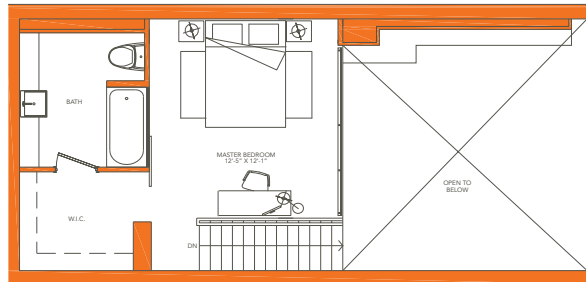
## two bedroom

890 sq.ft. + 95 sq.ft. balcony = 985 sq.ft. living space



↑  
N

level 3-7



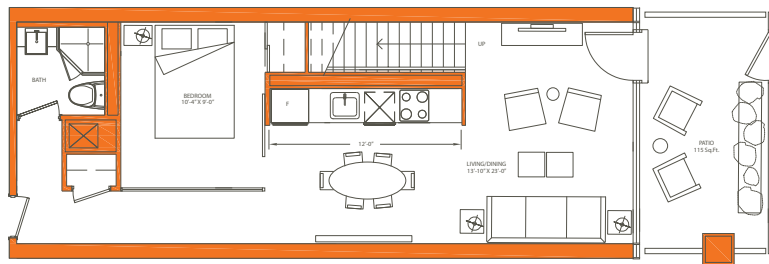
All dimensions, specifications and drawings are approximate.  
Actual square footage may vary from the stated floor plan. E. & D. E. Furniture not included.



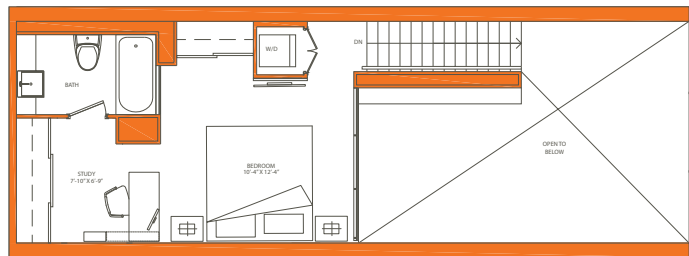
# LML940live

## two bedroom + study

940 sq.ft. + 115 sq.ft. balcony = 1055 sq.ft. living space



level 1

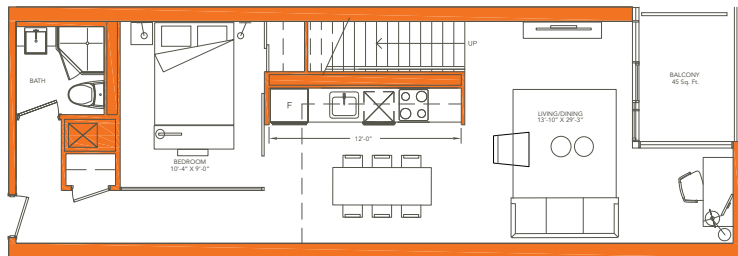


All dimensions, specifications and drawings are approximate.  
Actual square footage may vary from the stated floor plan. E. & D. E. Furniture not included.

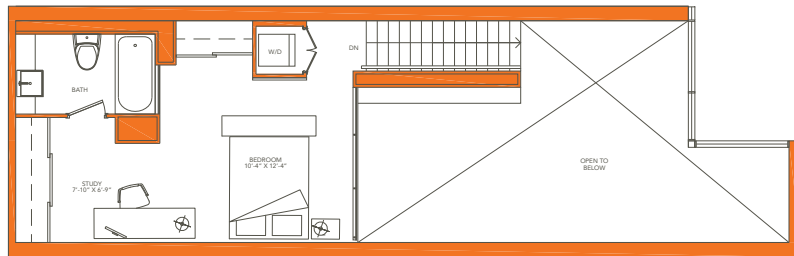
# LML945live

## two bedroom + study

945 sq.ft. + 45 sq.ft. balcony = 990 sq.ft. living space



level 3-7

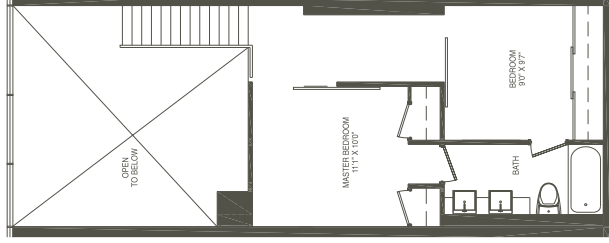
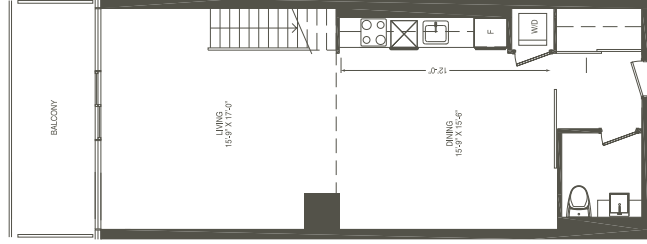


All dimensions, specifications and drawings are approximate.  
Actual square footage may vary from the stated floor plan. E. & D. E. Furniture not included.

## two bedroom

1095 sq.ft. + 100 sq.ft. balcony = 1195 sq.ft. living space

# LML1095live



All dimensions, floor plans and drawings are approximate.  
Actual layout and dimensions may vary from the actual floor plan. E. & O. E. Furniture not included.

level 1

# LML1190live

two bedroom + study  
1190 sq.ft. + 145 sq.ft. patio = 1335 sq.ft. living space



level 3-7

All dimensions, specifications and drawings are approximate.  
Actual square footage may vary from the stated floor plan 1. & D. 1. Furniture not included.

