

# TREVOR FONTAINE — & ASSOCIATES

**Meet Trevor** — Whether you're buying or selling in Toronto and the GTA, you need more than an agent—you need a strategic partner. For well over a decade, I've delivered proven results by combining deep market knowledge with a straightforward, client-first approach. My team and I don't just facilitate transactions; we build tailored strategies to ensure your experience is seamless, successful, and stress-free. Partner with a trusted advisor who invests in the same market you do. Let's achieve your real estate goals together.

**Buying With Us** — Navigating the Toronto and GTA market requires a guide with firsthand experience and unwavering dedication. As a long-time personal real estate investor and advisor, I offer clients an intimate understanding of the market that goes beyond the listings. My team and I act as your ultimate advocates, providing attentive service and clear advice from the first showing to the final negotiation. We are committed to making your buying experience informative and stress-free, ensuring you find the perfect property on the best possible terms. Let's start your search with a trusted expert on your side.

**Selling With Us** — When it's time to sell your property, you deserve a team that combines expert marketing with masterful negotiation. With over a decade of success in Toronto and the GTA, I have a proven track record of securing exceptional results for my clients. My team and I create a customized strategy for every property, leveraging deep market insights and a vast network to attract the right buyers. We handle the complexities so you can focus on your next chapter with confidence. Let's discuss how we can maximize the value of your investment.

Trevor Fontaine, Sr Vice President, Sales  
Sotheby's International Realty Canada

email: [tfontaine@sothebysrealty.ca](mailto:tfontaine@sothebysrealty.ca)

**Sotheby's** | **Canada**  
INTERNATIONAL REALTY

507

**507** sq.ft. + Balcony 84 – 86 sq.ft./  
5<sup>th</sup> Floor Terrace 39 sq.ft.

# HOLDEN



**LIBERTY  
CENTRAL**  
BY THE LAKE

All areas and stated room dimensions are approximate. Floor area measured in accordance with Fannie Mae's Uniform Residential Appraisal Manual (Fannie Mae, 2003) and in accordance with Fannie's Uniform Appraisal System for Residential Mortgage Lending (Fannie Mae, 2005). Actual living area will vary from floor area stated. Builders may substitute materials for those provided in the plans and specifications provided such materials are of quality equal to or better than the material provided for in the plans and specifications. Floor plans are subject to change without notice. E. & O.E. March, 2011.

**529** sq.ft. + Balcony 20 sq.ft./  
5<sup>th</sup> Floor Terrace 646 sq.ft.

**RELAX**  
37' X 55'

**LIVE**  
10'0" X 11'5"

**SLEEP**  
9'8" X 9'9"

**CLEAN**

**COOK/EAT**  
13'2" X 10'1"

**W/D**

**ENTRY/LEAVE**

Legend:  
 ■ WALL  
 ■ DOOR  
 ■ WINDOW  
 ■ CLOSET  
 ■ BATH  
 ■ KITCHEN  
 ■ DINING  
 ■ LIVING  
 ■ BEDROOM  
 ■ ENTRY



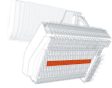
TYPICAL FLOORS 5-24

All areas and stated room dimensions are approximate. Floor area measured in accordance with Tian on bulletin #22. A actual living area will vary from floor area stated. Buyer may substitute materials for those provided in the plans and specifications provided such materials are of quality equal to or better than the material provided for in the plans and specifications. Floor plans are subject to a change without notice. E. & OE. March, 2013.

One Bedroom

**560** sq.ft. + Balcony 84 – 86 sq.ft./  
5<sup>th</sup> Floor Terrace 220 sq.ft.

**KELSO**



SUITE LOCATION 5-24



TYPICAL FLOORS 5-24

**LIBERTY  
CENTRAL**  
BY THE LAKE

N

All areas and dated room dimensions are approximate. Floor area measured in accordance with ANSI Z390-1-2006. Dimensions are shown in feet and inches. All dimensions are to the center line of the wall. For those provided in brackets and specified area provided such materials are of quality equal to or better than the material provided. All dimensions and specifications. Floor plans are subject to change without notice. © 2021 Liberty Lake.

One Bedroom

**570** sq.ft. + Balcony 84 – 86 sq.ft./  
5<sup>th</sup> Floor Terrace 220 sq.ft.

# BALSAM



SUITE LOCATION 5-24



TYPICAL FLOORS 5-24

**LIBERTY  
CENTRAL**  
BY THE LAKE

N

All areas and dated room dimensions are approximate. Floor area measured in accordance with the National Fire Protection Association (NFPA) standard. Floor area is not to be used for comparison purposes. For those provided in the plans and specifications, such materials are of quality equal to or better than the material provided. For all materials and specifications, please refer to the project's design manual, which is available at the project's website.

618

# GIBSON



TYPICAL FLOORS 3-24



SUITE LOCATION 3-24

All areas and related norm dimensions are approximate. Floor areas measured in accordance with Tairon bulletin #22. Actual living area will vary from floor area stated. Buyer may substitute materials for those provided in the plans and specifications provided such materials are of quality equal to or better than the material provided for in the plans and specifications. Floor plans are subject to change without notice. E. & O.E. March, 2011.

**LIBERTY  
CENTRAL**  
BY THE LAKE

One Bedroom + Den

**635** sq.ft. + Balcony 84 – 86 sq.ft./  
5<sup>th</sup> Floor Terrace 220 sq.ft.

**BELLWOOD**



SUITE LOCATION 5-24



TYPICAL FLOORS 5-24

**LIBERTY  
CENTRAL**  
BY THE LAKE

N

All areas and dated room dimensions are approximate. Floor area measured in accordance with ANSI Z390-1-2006. Dimensions are shown for reference only. Actual dimensions may vary. Suite layout, for those provided in this plan, and specifications are provided for reference only. All quality is our intent. Please refer to the master plan for more information. For more information, please contact the project manager. All dimensions and specifications are provided for reference only. All dimensions and specifications are provided for reference only. All dimensions and specifications are provided for reference only.

## One Bedroom + Den

**642** sq.ft. + Balcony 84 – 86 sq.ft./  
5<sup>th</sup> Floor Terrace 220 sq.ft.

# JOSEPH



SUITE LOCATION 5-24



TYPICAL FLOORS 5-24

All areas and related room dimensions are approximate. Floor areas measured in accordance with Tarrion bulletin #22. Actual living area will vary from floor area stated. Buyer may substitute materials for those provided in the plans and specifications provided such materials are of quality equal to or better than the material provided for in the plans and specifications. Floor plans are subject to change without notice. E. & OE, March, 2011.

**LIBERTY  
CENTRAL**  
BY THE LAKE



**644** sq.ft. + Balcony 58 - 115 sq.ft.

**RELAX**  
50' X 12'11"  
SIZE VARIES FROM 58 TO 116 SQ. FT.

**LIVE/EAT**  
25'0" X 10'3" (90')

**COOK**

**CLEAN**

**WALK-IN CLOSET**

**SLEEP**  
11'0" X 9'0"

**WORK/STUDY/CREATE**  
7'0" X 6'0"

**W/D**

**ENTER/LEAVE**



TYPICAL FLOORS 6-24

All areas and related room dimensions are approximate. Floor areas measured in accordance with Tarrion bulletin #22. Actual living area will vary from floor area stated. Buyer may substitute materials for those provided in the plans and specifications provided such materials are of quality equal to or better than the material provided for in the plans and specifications. Floor plans are subject to change without notice. E. & O.E. March, 2011.

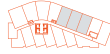
One Bedroom + Den

**678** sq.ft. + Balcony 57 – 98 sq.ft.

**DIAMOND**



SUITE LOCATION 6-24



TYPICAL FLOORS 6-24

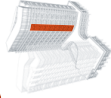
**LIBERTY  
CENTRAL**  
BY THE LAKE

All areas and dimensions are approximate. Floor area measured in accordance with the National Fire Protection Association (NFPA) standard 990-10.1. For those provided in this plan and specifications are provided such materials are of quality equal to or better than the material provided. All materials and specifications are subject to change without notice. © 2021 Liberty Central.

**751** sq.ft. + Balcony 62 - 146 sq.ft.

The floor plan shows a large open area with a curved wall on the left. The layout includes:

- RELAX**: 5'0" X 13'0" (Size varies from 62 to 146 sq. ft.)
- LIVE/EAT**: 25'0" X 14'10" (88')
- COOK**: Kitchen area with a stove and sink.
- WORK/STUDY/CREATE**: 8'0" X 7'6"
- MASTER SLEEP**: 11'0" X 9'0"
- WALK-IN CLOSET**: Located near the master sleep area.
- EXTRA CLEAN**: Bathroom area with a toilet and sink.
- CLEAN**: Bathroom area with a toilet and sink.
- STORAGE**: Storage area with a W/D (Washing/Drying) unit.
- ENTER/LEAVE**: Entrance/Exit area.



TYPICAL FLOORS 6-24

All areas and related room dimensions are approximate. Floor areas measured in accordance with Tarrion bulletin #22. Actual living area will vary from floor area stated. Buyer may substitute materials for those provided in the plans and specifications provided such materials are of quality equal to or better than the material provided for in the plans and specifications. Floor plans are subject to change without notice. E. & O.E. March, 2011.



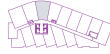
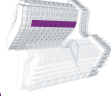
Two Bedroom

**751** sq.ft. + Balcony 62 – 146 sq.ft.

# CHARLESTON - B



**LIBERTY  
CENTRAL**  
BY THE LAKE



N

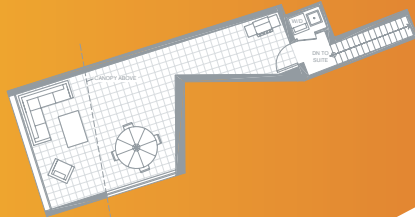
TYPICAL FLOORS 6-24

SUITE LOCATION 6-24

All areas and stated room dimensions are approximate. Floor area measured in accordance with ANSI Z390-1-2006. Measurements are taken from the interior face of the walls. Measurements for fixtures are taken from the center of the fixture. Measurements for built-in appliances are taken from the exterior face of the appliance. Measurements for built-in furniture are taken from the exterior face of the furniture. Measurements for built-in appliances are taken from the exterior face of the appliance. Measurements for built-in furniture are taken from the exterior face of the furniture. Measurements for built-in appliances are taken from the exterior face of the appliance. Measurements for built-in furniture are taken from the exterior face of the furniture.

**Main**  
1,022 sq.ft.

**Rooftop Terrace**  
430 sq.ft.



## EUGENIA

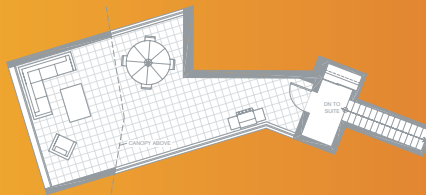

**ROOFTOP TERRACE**

PENTHOUSE

**Main**  
1,034 sq.ft.



**Rooftop  
Terrace**  
440 sq.ft.



**GOLDEN**



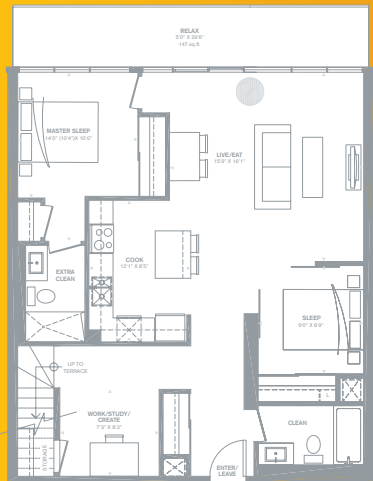
**ROOFTOP TERRACE**



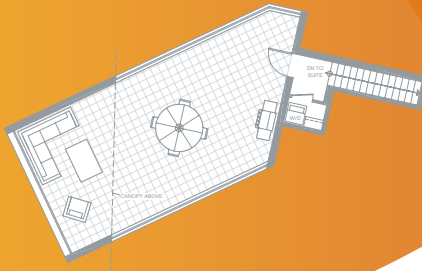
**PENTHOUSE**

Measurements and material names are approximate. Plans may vary without notice. Please refer to the project website for the most current information. All measurements are in feet and inches. All dimensions are approximate. All dimensions are subject to change without notice. © 2020, June 2021.

**Main**  
1,098 sq.ft.



**Rooftop Terrace**  
525 sq.ft.



## PENINSULA



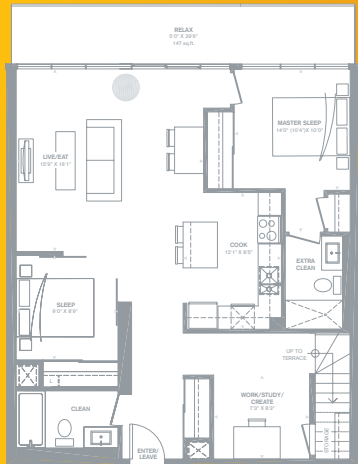
### ROOFTOP TERRACE



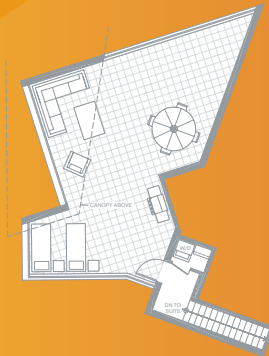
PENTHOUSE



**Main**  
1,105 sq.ft.



**Rooftop Terrace**  
585 sq.ft.



## ROSALIND



ROOFTOP TERRACE



PENTHOUSE

**Main**  
1,220 sq.ft.



**Rooftop Terrace**  
730 sq.ft.



**CEDAR**

Measurements and room dimensions are approximate. Floor area measured to perimeter only. Room includes 65% of area. Rooming area will vary from floor to floor. Building size, location and other features are provided for information only and are not intended to be used as a basis for any other purpose. Plans are subject to change without notice. © 2018 Cedar, Inc.



ROOFTOP TERRACE

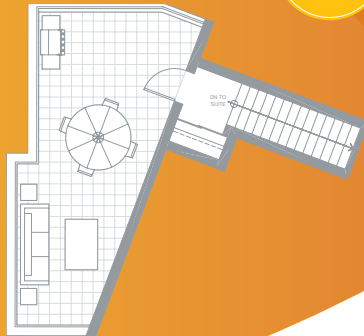


PENTHOUSE

**Main**  
1,489 sq.ft.



**Rooftop Terrace**  
285 sq.ft.



## WHITEWATER


**ROOFTOP TERRACE**

PENTHOUSE