

TREVOR FONTAINE — & ASSOCIATES

Meet Trevor — Whether you're buying or selling in Toronto and the GTA, you need more than an agent—you need a strategic partner. For well over a decade, I've delivered proven results by combining deep market knowledge with a straightforward, client-first approach. My team and I don't just facilitate transactions; we build tailored strategies to ensure your experience is seamless, successful, and stress-free. Partner with a trusted advisor who invests in the same market you do. Let's achieve your real estate goals together.

Buying With Us — Navigating the Toronto and GTA market requires a guide with firsthand experience and unwavering dedication. As a long-time personal real estate investor and advisor, I offer clients an intimate understanding of the market that goes beyond the listings. My team and I act as your ultimate advocates, providing attentive service and clear advice from the first showing to the final negotiation. We are committed to making your buying experience informative and stress-free, ensuring you find the perfect property on the best possible terms. Let's start your search with a trusted expert on your side.

Selling With Us — When it's time to sell your property, you deserve a team that combines expert marketing with masterful negotiation. With over a decade of success in Toronto and the GTA, I have a proven track record of securing exceptional results for my clients. My team and I create a customized strategy for every property, leveraging deep market insights and a vast network to attract the right buyers. We handle the complexities so you can focus on your next chapter with confidence. Let's discuss how we can maximize the value of your investment.

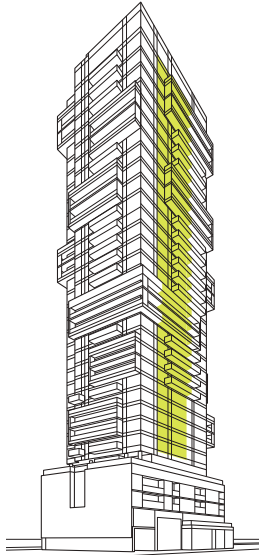
Trevor Fontaine, Sr Vice President, Sales
Sotheby's International Realty Canada

email: tfontaine@sothebysrealty.ca

Sotheby's | **Canada**
INTERNATIONAL REALTY

eva

01 / two bedroom / 594 sf



southeast

dundas street east

mutual street



floors 24-26, 30

shuter street



floors 18-23, 27-29



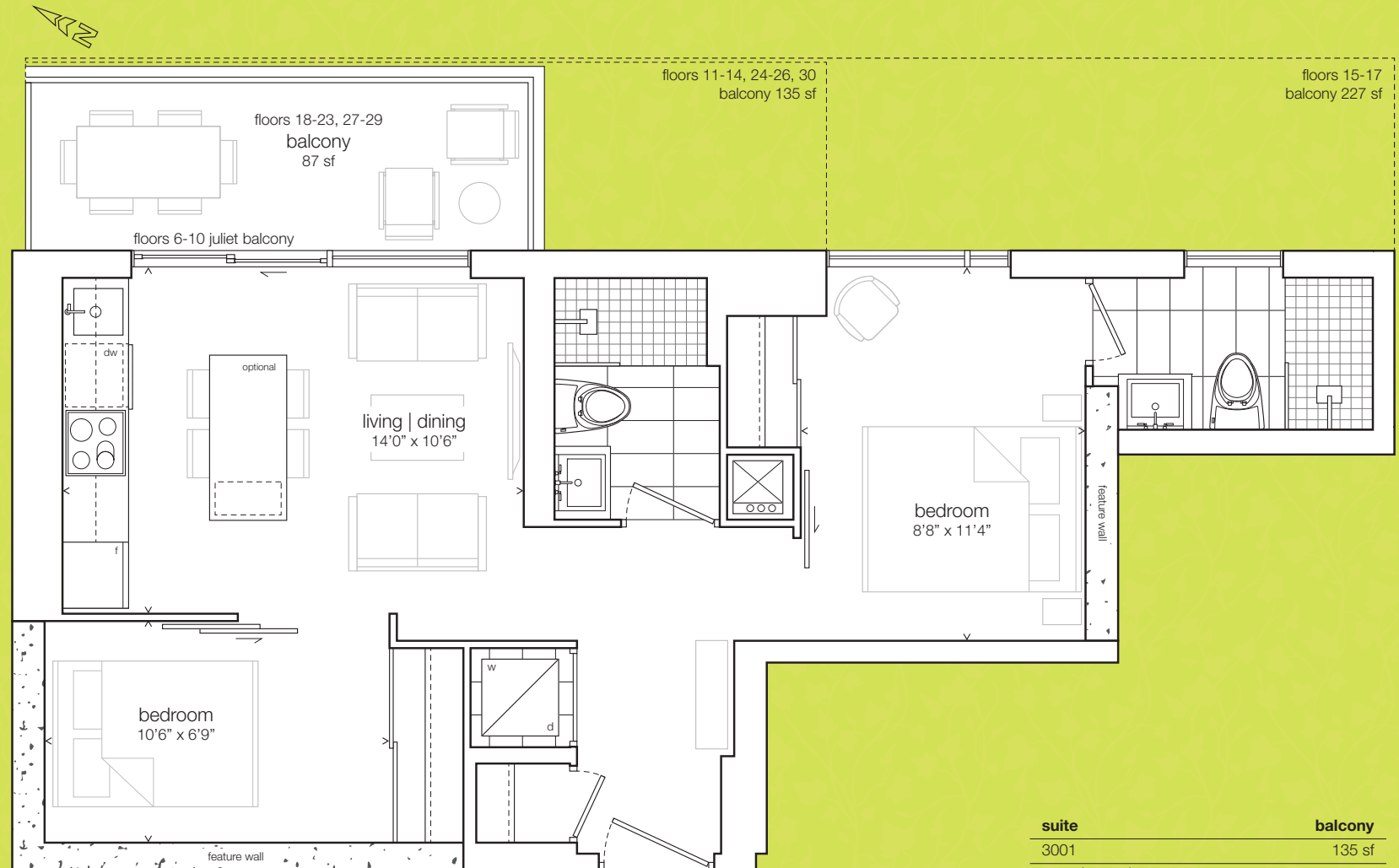
floors 15-17



floors 11-14



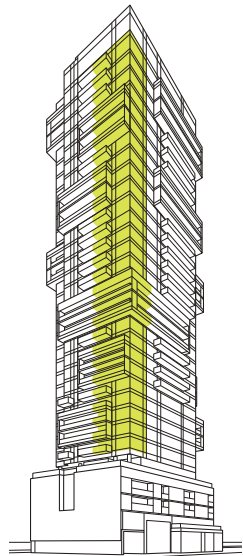
floors 6-10



1801, 1901, 2001, 2101, 2201, 2301, 2701, 2801, 2901 shown

suite	balcony
3001	135 sf
2701 2801 2901	87 sf
2401 2501 2601	135 sf
1801 1901 2001 2101 2201 2301	87 sf
1501 1601 1701	227 sf
1101 1201 1301 1401	135 sf
601 701 801 901 1001	juliet

all sizes, dimensions and specifications are subject to change without notice. this plan is not to scale and is subject to architectural review and revision. in order to comply with building site conditions and municipal, structural, vendor and/or architectural requirements, actual living areas may vary from floor area stated. floor area has been measured and may vary in accordance with bulletin #22 published by the tarion warranty corporation. window location, size and type may vary without notice. all furniture shown on marketing plans are not included. purchasers acknowledge that the dwelling units with terraces or balconies may contain an interior step up for access to such terraces or balconies. the balcony area finishing material and any dividers, where applicable, may vary from suite to suite based on design and material specifications. balcony dimensions, configuration and location are estimates only and may not be exactly as shown. location of columns, size and type may vary without notice. e.&o.e.



southeast

dundas street east

mutual street



floors 30

shuter street



floors 27-29



floors 15-17



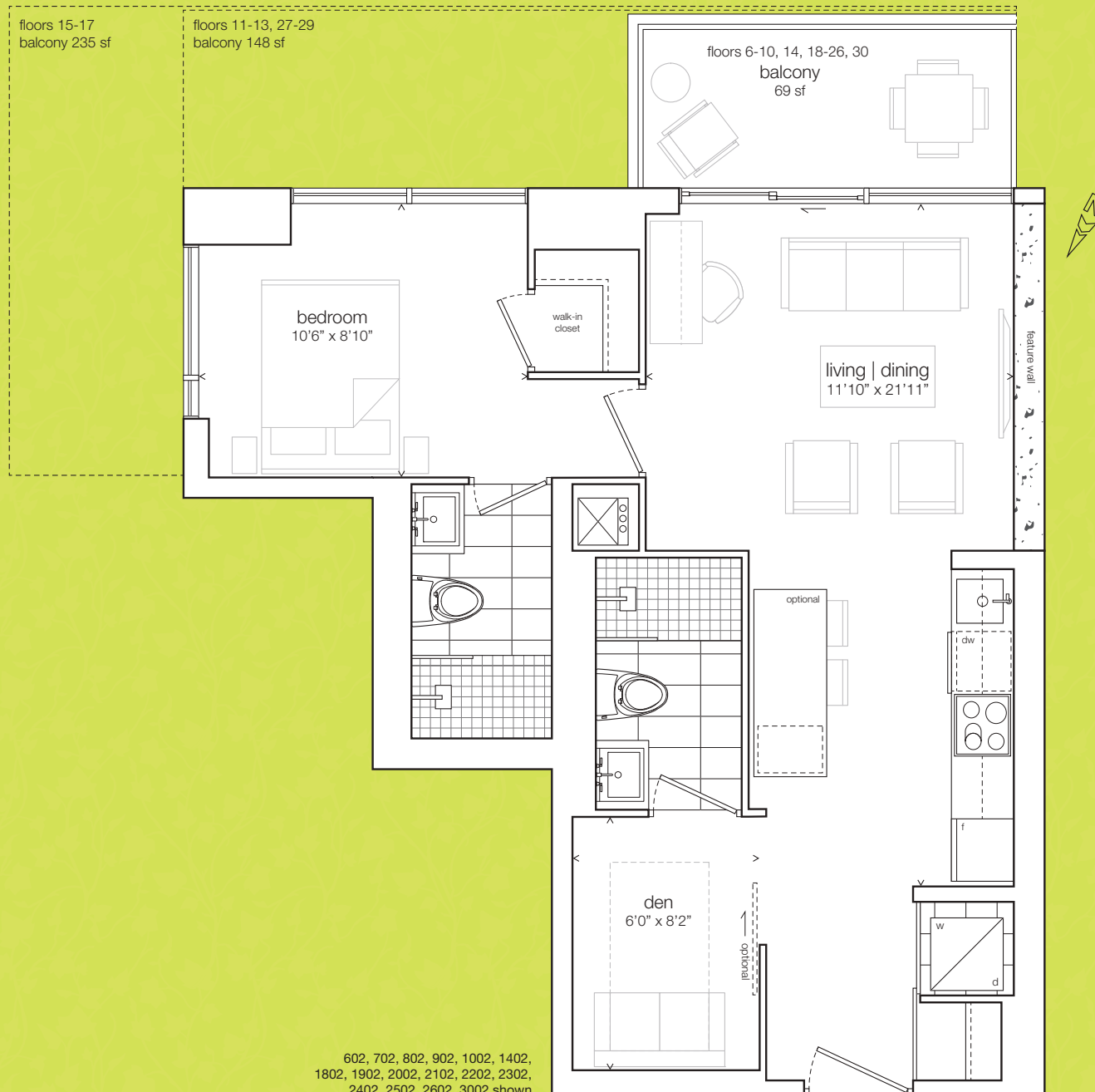
floors 11-13



floors 6-10, 14, 18-26

cora

02 / one bedroom + den / 598 sf



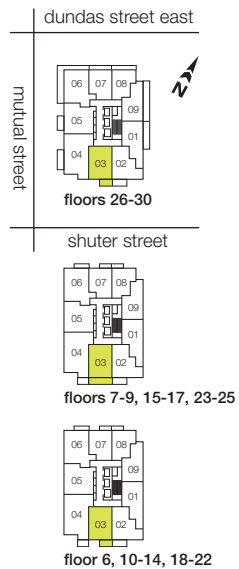
suite	balcony
3002	69 sf
2702 2802 2902	148 sf
2302 2402 2502 2602	69 sf
1802 1902 2002 2102 2202	
1502 1602 1702	235 sf
1402	69 sf
1102 1202 1302	148 sf
602 702 802 902 1002	69 sf

all sizes, dimensions and specifications are subject to change without notice, this plan is not to scale and is subject to architectural review and revision. in order to comply with building site conditions and municipal, structural, vendor and/or architectural requirements, actual living areas may vary from floor area stated. floor area has been measured and may vary in accordance with bulletin #22 published by the tarion warranty corporation. window location, size and type may vary without notice. all furniture shown on marketing plans are not included. purchasers acknowledge that the dwelling units with terraces or balconies may contain an interior step up for access to such terraces or balconies. the balcony area finishing material and any dividers, where applicable, may vary from suite to suite based on design and material specifications. balcony dimensions, configuration and location are estimates only and may not be exactly as shown. location of columns, size and type may vary without notice. e.&o.e.

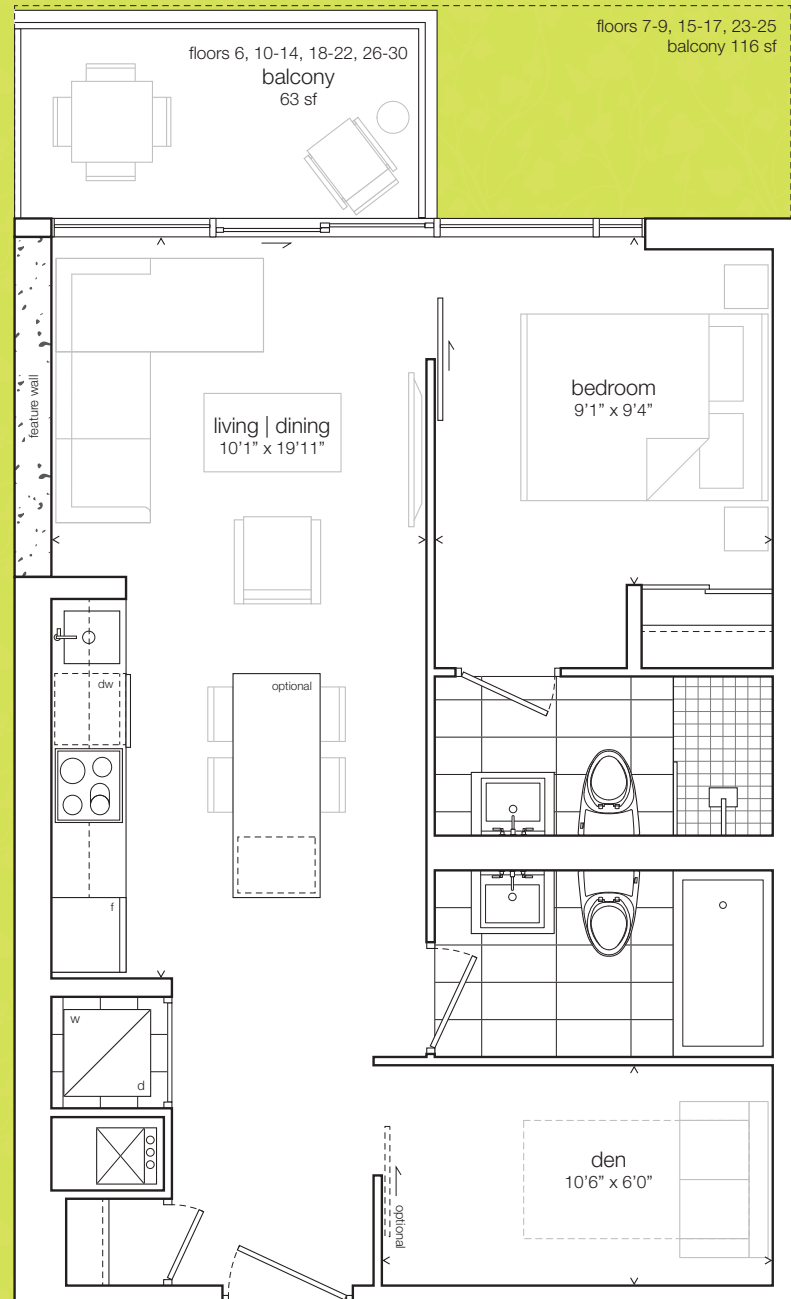
nena

03 / one bedroom + den / 590 sf

WY



603, 1003, 1103, 1203, 1303,
1403, 1803, 1903, 2003,
2103, 2203, 2603, 2703,
2803, 2903, 3003 shown



suite	balcony
2603 2703 2803 2903 3003	63 sf
2303 2403 2503	116 sf
1803 1903 2003 2103 2203	63 sf
1503 1603 1703	116 sf
1003 1103 1203 1303 1403	63 sf
703 803 903	116 sf
603	63 sf

all sizes, dimensions and specifications are subject to change without notice, this plan is not to scale and is subject to architectural review and revision. in order to comply with building site conditions and municipal, structural, vendor and/or architectural requirements, actual living areas may vary from floor area stated. floor area has been measured and may vary in accordance with bulletin #22 published by the tarion warranty corporation. window location, size and type may vary without notice. all furniture shown on marketing plans are not included. purchasers acknowledge that the dwelling units with terraces or balconies may contain an interior step up for access to such terraces or balconies. the balcony area finishing material and any dividers, where applicable, may vary from suite to suite based on design and material specifications. balcony dimensions, configuration and location are estimates only and may not be exactly as shown. location of columns, size and type may vary without notice. e.&o.e.

dundas street east

mutual street

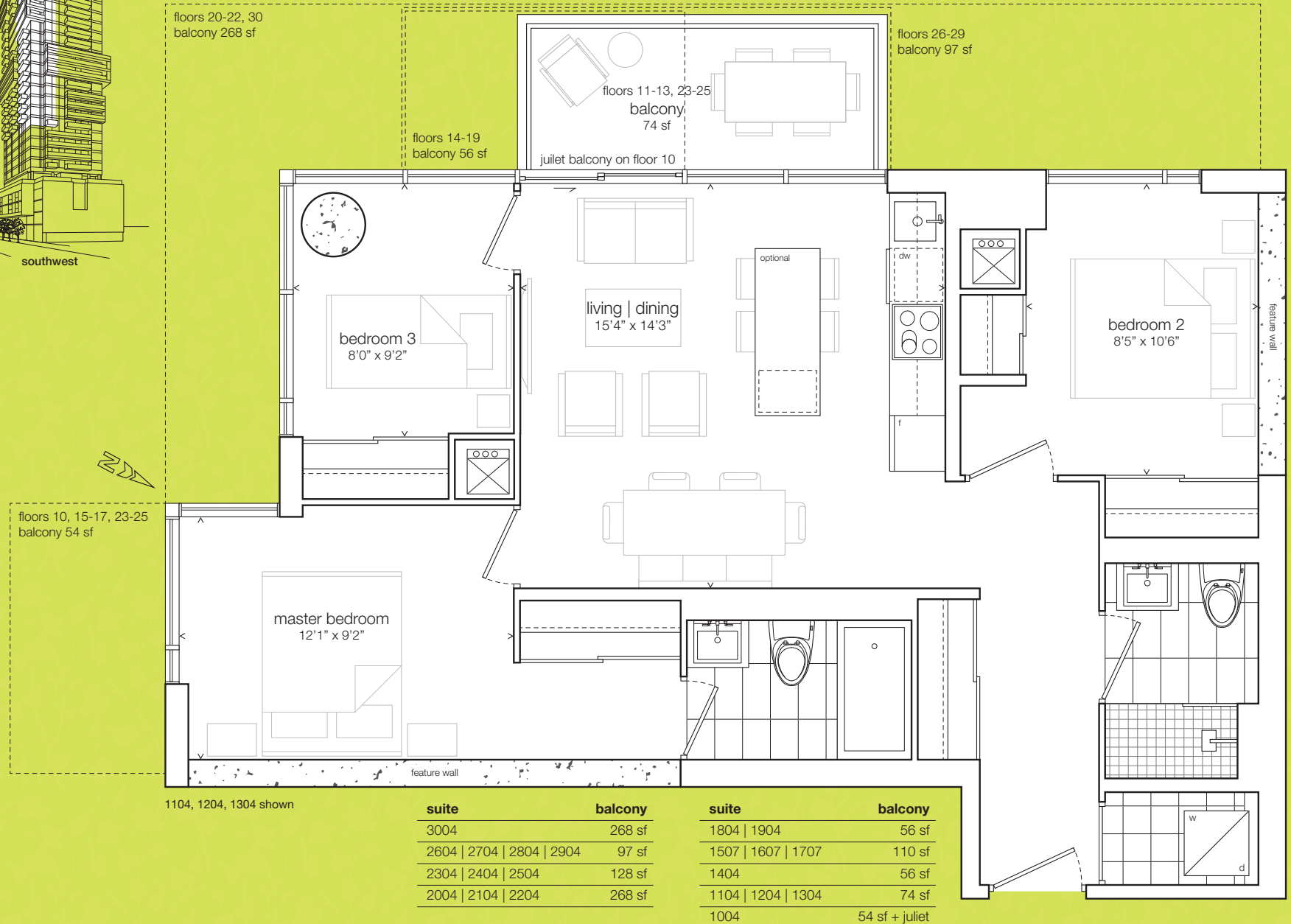


shuter street

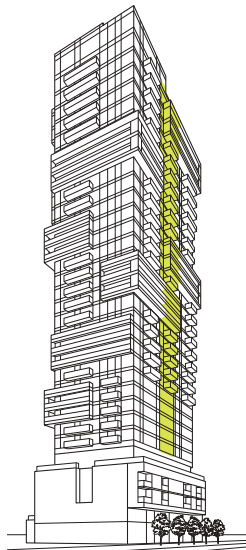


fantasia

04 / three bedroom / 861 sf



all sizes, dimensions and specifications are subject to change without notice. this plan is not to scale and is subject to architectural review and revision. in order to comply with building site conditions and municipal, structural, vendor and/or architectural requirements, actual living areas may vary from floor area stated. floor area has been measured and may vary in accordance with bulletin #22 published by the tarion warranty corporation. window location, size and type may vary without notice. all furniture shown on marketing plans are not included. purchasers acknowledge that the dwelling units with terraces or balconies may contain an interior step up for access to such terraces or balconies. the balcony area finishing material and any dividers, where applicable, may vary from suite to suite based on design and material specifications. balcony dimensions, configuration and location are estimates only and may not be exactly as shown. location of columns, size and type may vary without notice. e.&o.e.



northwest

dundas street east

mutual street



floors 23-29

shuter street



floors 20-22, 30



floors 16-18



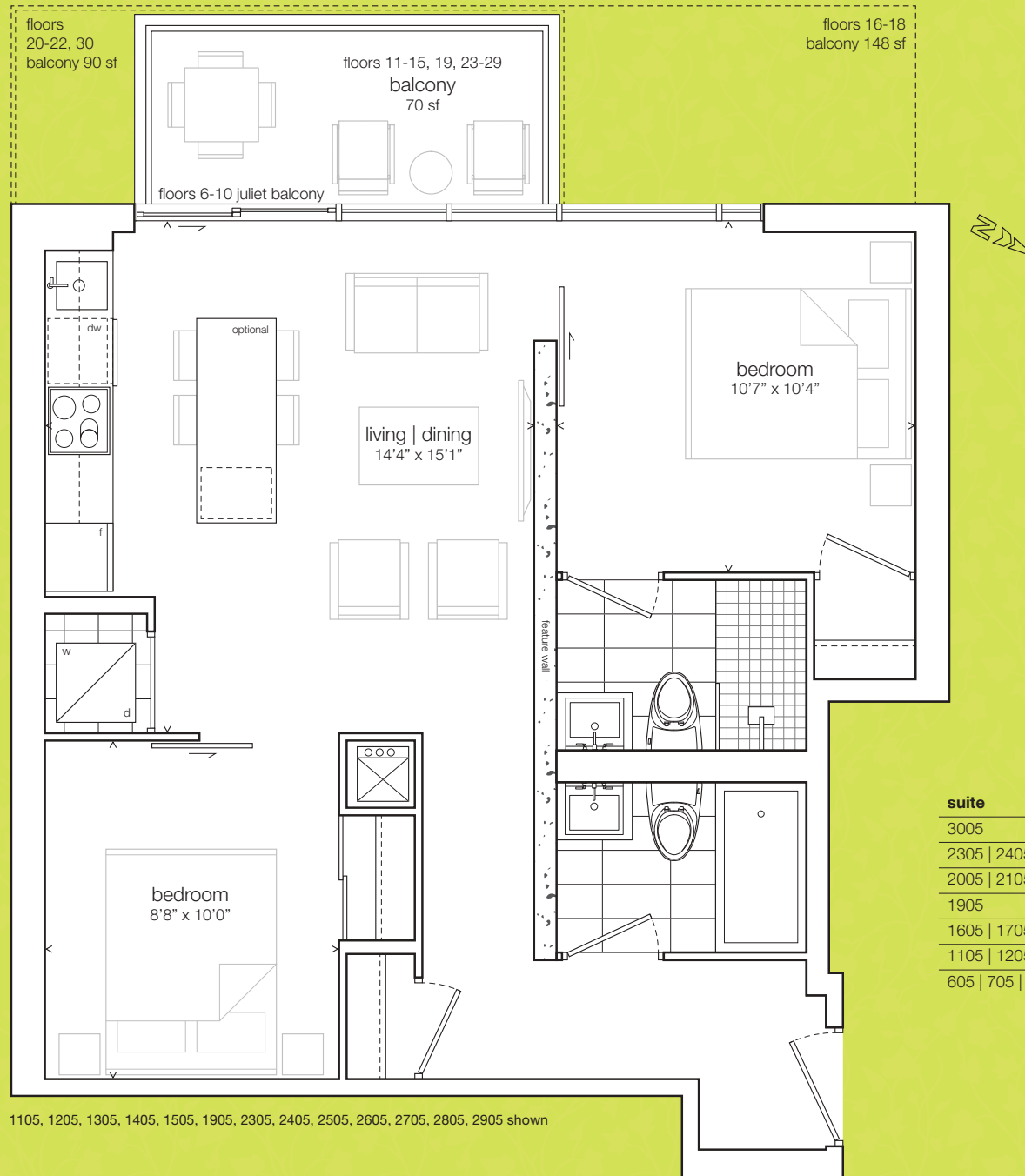
floors 11-15, 19



floors 6-10

kobold

05 / two bedroom / 669 sf



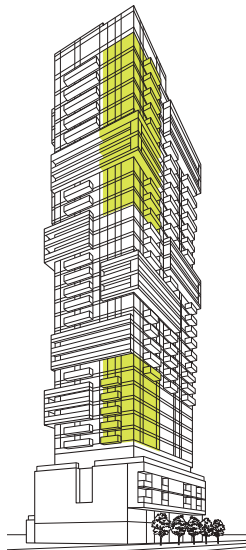
suite	balcony
3005	90 sf
2305 2405 2505 2605 2705 2805 2905	70 sf
2005 2105 2205	90 sf
1905	70 sf
1605 1705 1805	148 sf
1105 1205 1305 1405 1505	70 sf
605 705 805 905 1005	juliet

all sizes, dimensions and specifications are subject to change without notice. this plan is not to scale and is subject to architectural review and revision. in order to comply with building site conditions and municipal, structural, vendor and/or architectural requirements, actual living areas may vary from floor area stated. floor area has been measured and may vary in accordance with bulletin #22 published by the tarion warranty corporation. window location, size and type may vary without notice. all furniture shown on marketing plans are not included. purchasers acknowledge that the dwelling units with terraces or balconies may contain an interior step up for access to such terraces or balconies. the balcony area finishing material and any dividers, where applicable, may vary from suite to suite based on design and material specifications. balcony dimensions, configuration and location are estimates only and may not be exactly as shown. location of columns, size and type may vary without notice. e.&o.e.

starling

06 / two bedroom + media / 701 sf

WY



northwest

dundas street east

mutual street



floors 28-30

shuter street



floors 25-27



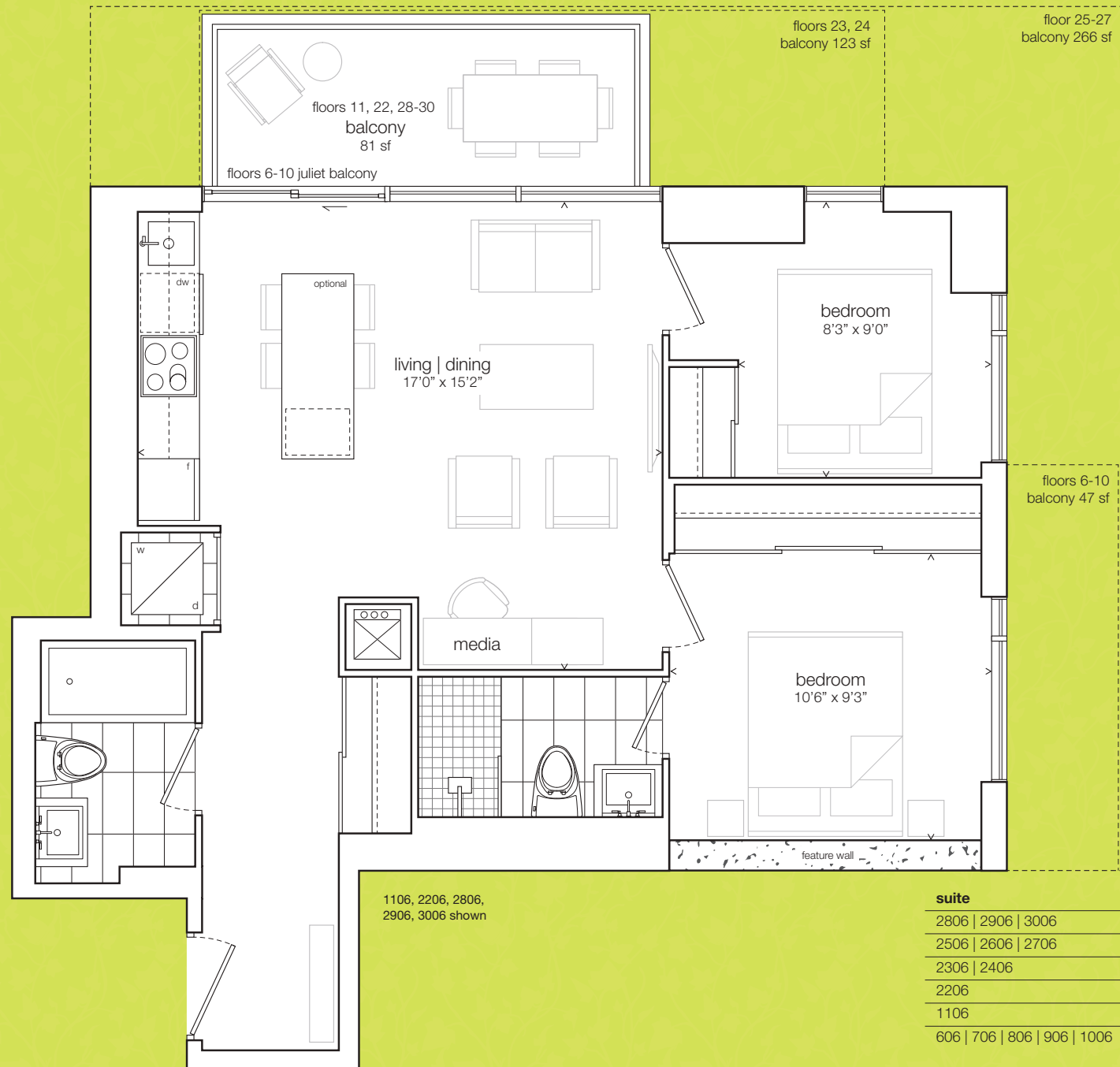
floors 23, 24



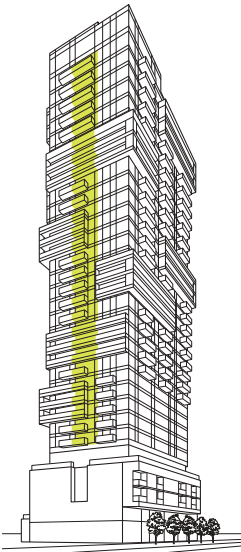
floors 11, 22



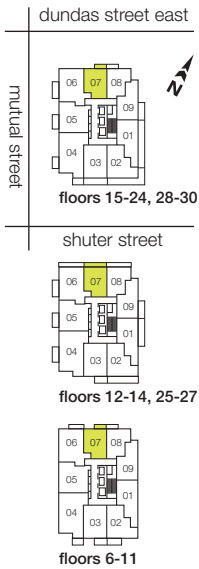
floors 6-10



all sizes, dimensions and specifications are subject to change without notice. this plan is not to scale and is subject to architectural review and revision. in order to comply with building site conditions and municipal, structural, vendor and/or architectural requirements, actual living areas may vary from floor area stated. floor area has been measured and may vary in accordance with bulletin #22 published by the tarion warranty corporation. window location, size and type may vary without notice. all furniture shown on marketing plans are not included. purchasers acknowledge that the dwelling units with terraces or balconies may contain an interior step up for access to such terraces or balconies. the balcony area finishing material and any dividers, where applicable, may vary from suite to suite based on design and material specifications. balcony dimensions, configuration and location are estimates only and may not be exactly as shown. location of columns, size and type may vary without notice. e.&o.e.

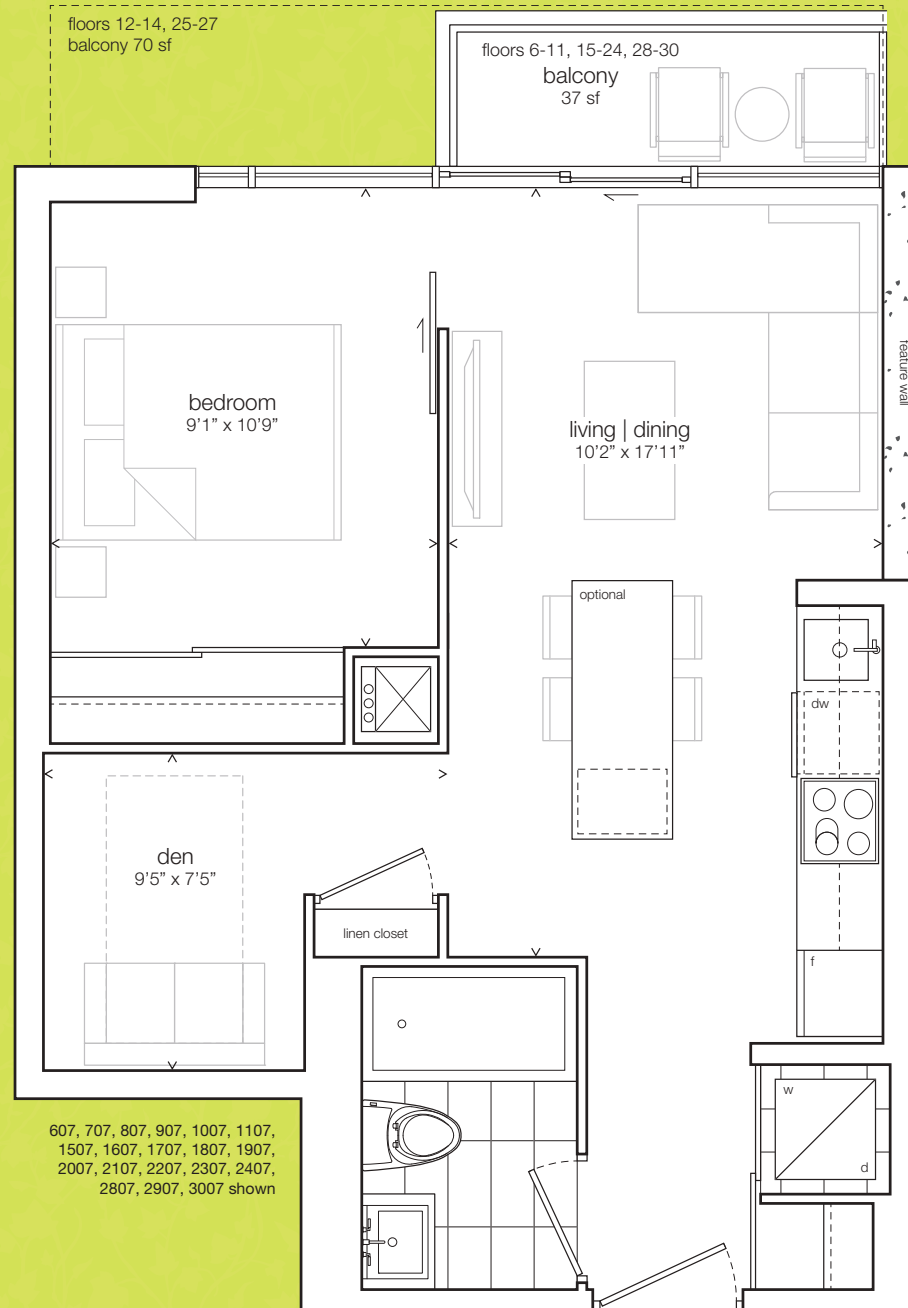


northwest



ballet

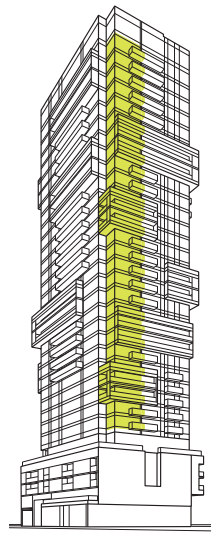
07 / one bedroom + den / 505 sf



607, 707, 807, 907, 1007, 1107,
1507, 1607, 1707, 1807, 1907,
2007, 2107, 2207, 2307, 2407,
2807, 2907, 3007 shown

suite	balcony
2807 2907 3007	37 sf
2507 2607 2707	70 sf
2007 2107 2207 2307 2407	37 sf
1507 1607 1707 1807 1907	70 sf
1207 1307 1407	70 sf
607 707 807 907 1007 1107	37 sf

all sizes, dimensions and specifications are subject to change without notice, this plan is not to scale and is subject to architectural review and revision. in order to comply with building site conditions and municipal, structural, vendor and/or architectural requirements, actual living areas may vary from floor area stated. floor area has been measured and may vary in accordance with bulletin #22 published by the tarion warranty corporation. window location, size and type may vary without notice. all furniture shown on marketing plans are not included. purchasers acknowledge that the dwelling units with terraces or balconies may contain an interior step up for access to such terraces or balconies. the balcony area finishing material and any dividers, where applicable, may vary from suite to suite based on design and material specifications. balcony dimensions, configuration and location are estimates only and may not be exactly as shown. location of columns, size and type may vary without notice. e.&o.e.

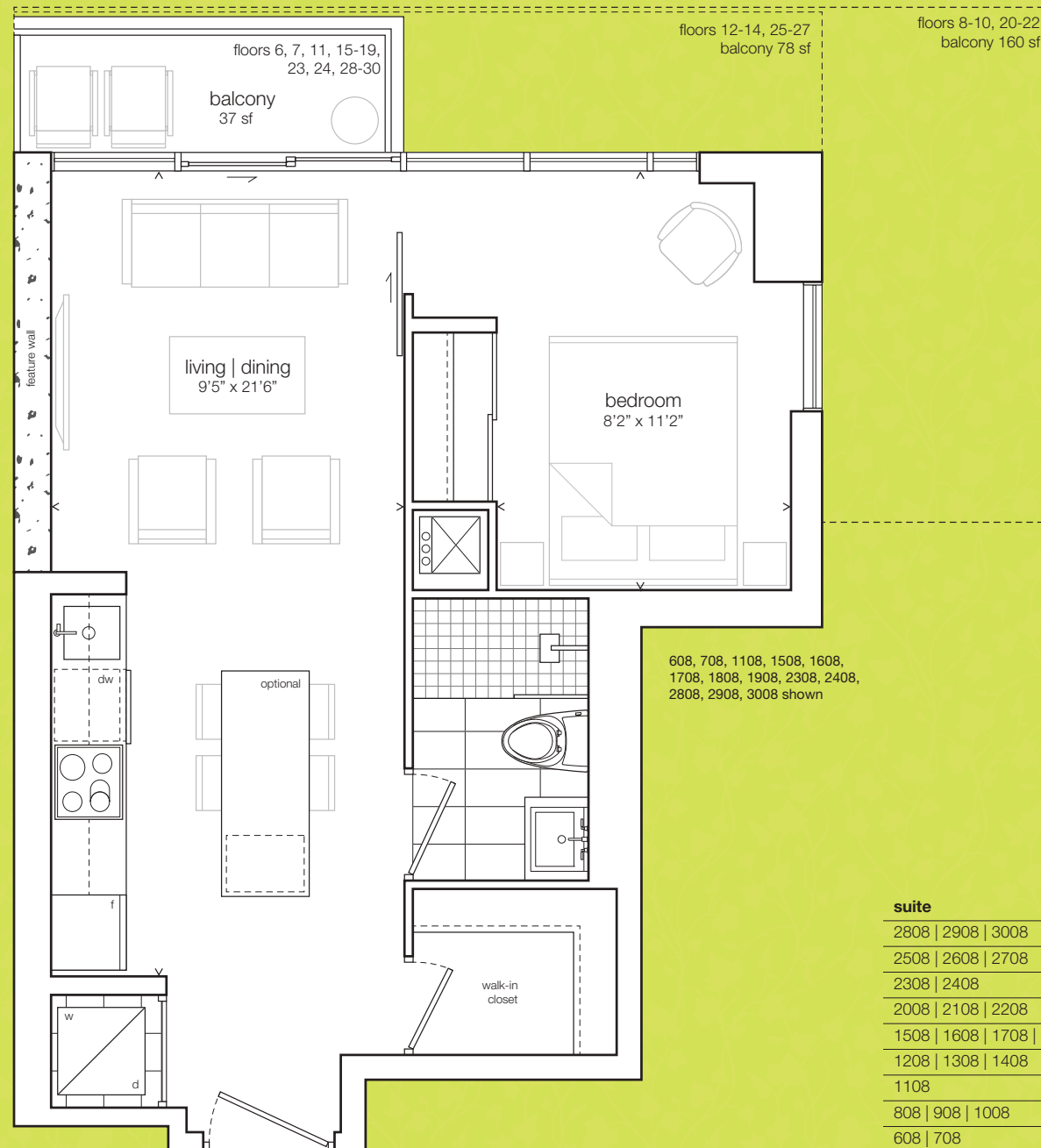


northeast



bettina

08 / one bedroom / 465 sf



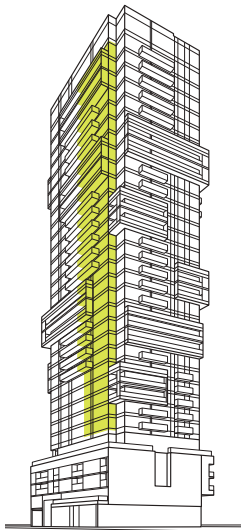
suite	balcony
2808 2908 3008	37 sf
2508 2608 2708	78 sf
2308 2408	37 sf
2008 2108 2208	160 sf
1508 1608 1708 1808 1908	37 sf
1208 1308 1408	78 sf
1108	37 sf
808 908 1008	160 sf
608 708	37 sf

all sizes, dimensions and specifications are subject to change without notice, this plan is not to scale and is subject to architectural review and revision. in order to comply with building site conditions and municipal, structural, vendor and/or architectural requirements, actual living areas may vary from floor area stated. floor area has been measured and may vary in accordance with bulletin #22 published by the tarion warranty corporation. window location, size and type may vary without notice. all furniture shown on marketing plans are not included. purchasers acknowledge that the dwelling units with terraces or balconies may contain an interior step up for access to such terraces or balconies. the balcony area finishing material and any dividers, where applicable, may vary from suite to suite based on design and material specifications. balcony dimensions, configuration and location are estimates only and may not be exactly as shown. location of columns, size and type may vary without notice. e.&o.e.

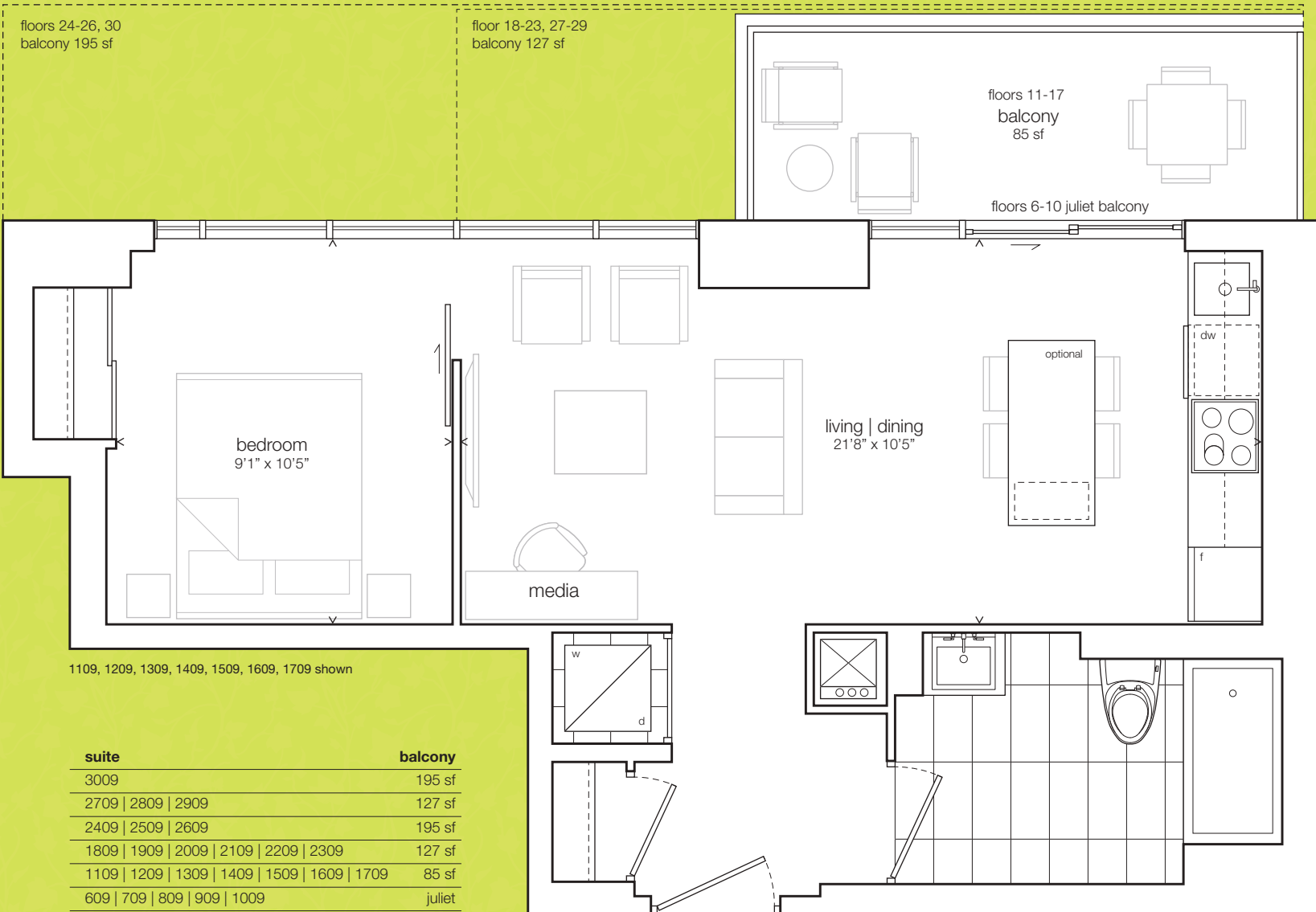
brimstone

09 / one bedroom + media / 536 sf

WY



northeast



dundas street east

mutual street



floors 24-26, 30

shuter street



floors 18-23, 27-29



floors 11-17



floors 6-10

all sizes, dimensions and specifications are subject to change without notice. this plan is not to scale and is subject to architectural review and revision. in order to comply with building site conditions and municipal, structural, vendor and/or architectural requirements, actual living areas may vary from floor area stated. floor area has been measured and may vary in accordance with bulletin #22 published by the tarion warranty corporation. window location, size and type may vary without notice. all furniture shown on marketing plans are not included. purchasers acknowledge that the dwelling units with terraces or balconies may contain an interior step up for access to such terraces or balconies. the balcony area finishing material and any dividers, where applicable, may vary from suite to suite based on design and material specifications. balcony dimensions, configuration and location are estimates only and may not be exactly as shown. location of columns, size and type may vary without notice. e.&o.e.