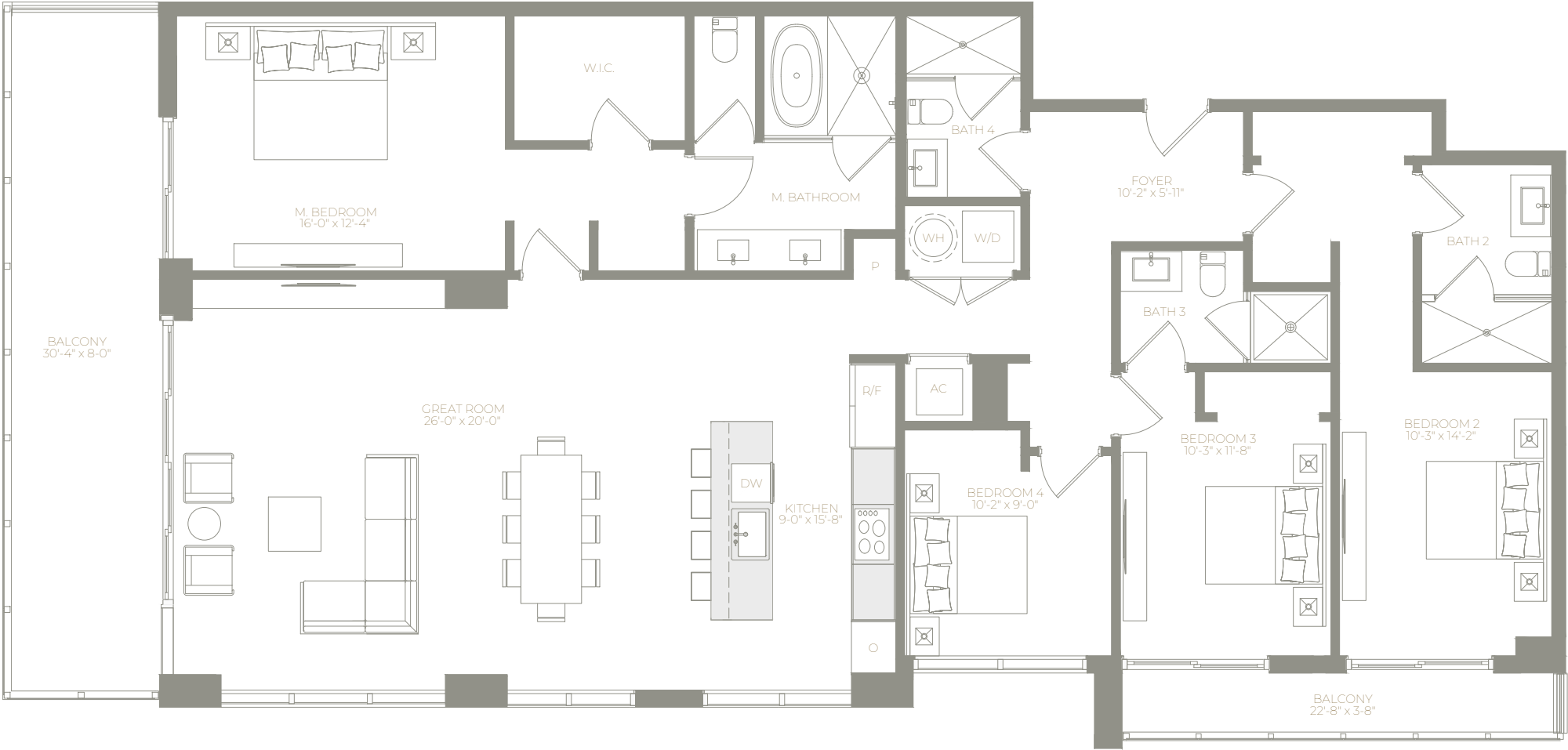
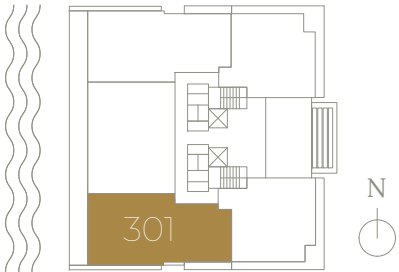
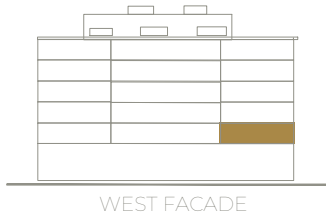


# LEVEL 3

## UNIT 301

4 Bedrooms / 4 Bath

**AREA:**  
Unit :  
2,135 sq. ft. / 198 m<sup>2</sup>  
Balcony :  
326 sq. ft. / 30 m<sup>2</sup>  
**TOTAL**  
2,461 sq. ft. / 228 m<sup>2</sup>



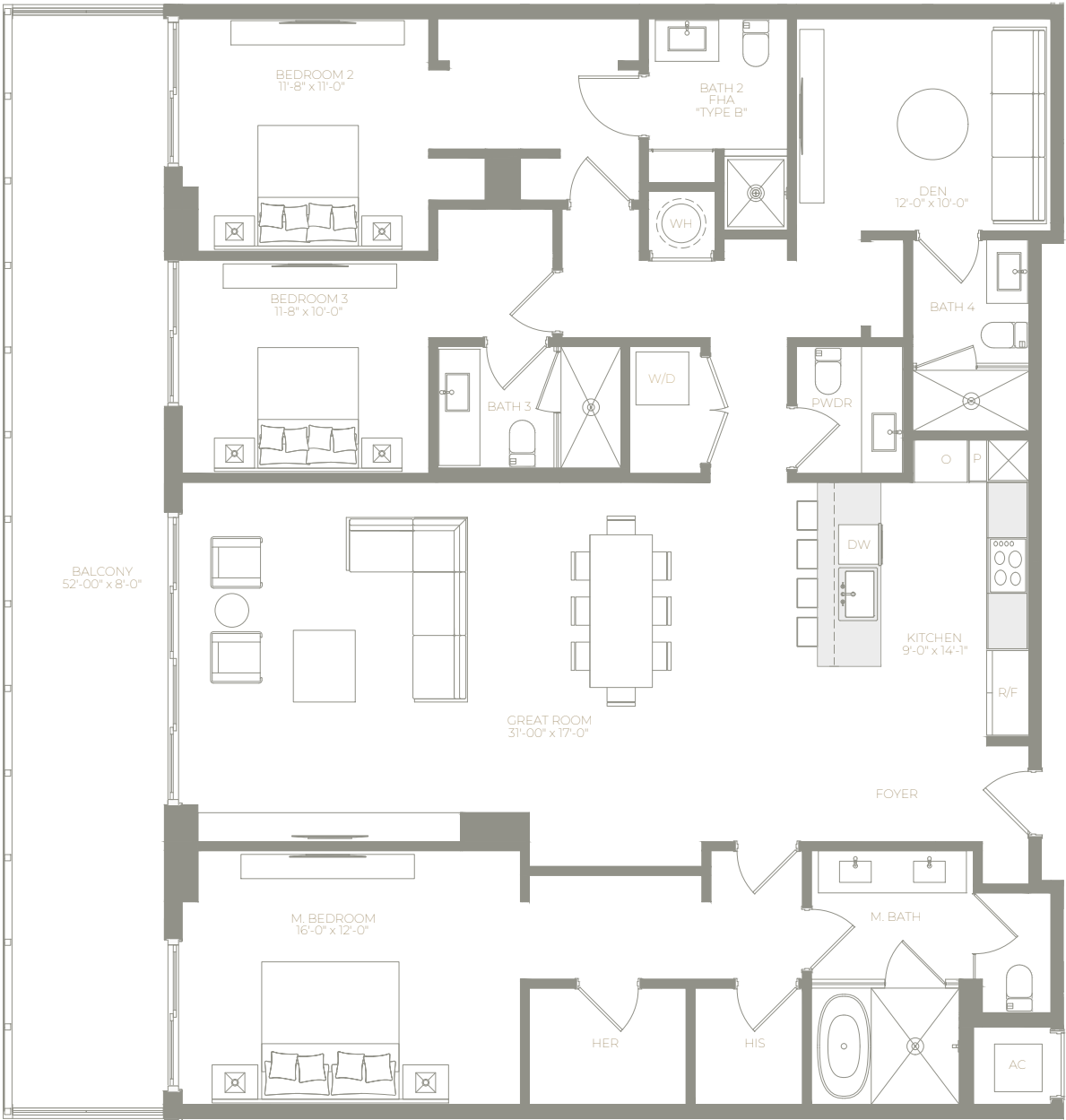
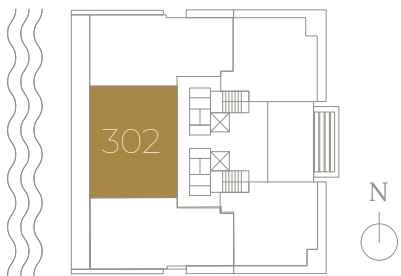
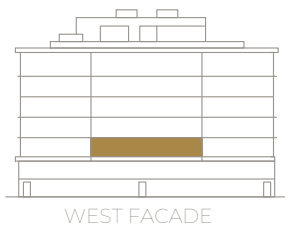
Plans are not to scale. All improvements, facilities, features and amenities are proposed only, preliminary and subject to change. The configuration, use of space and floor plan design are proposed and subject to change. All dimensions, square footages and square meters are approximate and subject to change. Balconies are not part of the proposed unit, but are proposed as limited common elements of the unit from which they are directly and exclusively accessible. Depictions of furnishings, fixtures and appliances are conceptual, for illustration purposes only and are not necessarily included in the units. Consult your purchase agreement for items included with your unit. No guarantees or representations are made that any improvement, facilities, features or amenities described or depicted will be provided or built, or, if provided or built, will be of the same type or nature described. There are various methods for measuring the dimensions of a unit and depending on the method used, the measurements and resulting square footage and square meters of a unit as stated or described in the prospectus and the declaration for the Condominium. Stated unit square footages, square meters and dimensions are measured to the exterior boundaries of the exterior walls and the centerline of interior demising walls, including structural walls and other interior structural components of the building, and in fact vary from the square footages, square meters and dimensions that would be determined by using the description and definition of the "Unit" set forth in the prospectus and Declaration (which generally only includes the interior airspace between the perimeter walls and excludes all interior structural components and common elements within the perimeter walls of the Unit).

# LEVEL 3

## UNIT 302

3 Bedrooms + Den / 4.5 Bath

AREA:  
Unit :  
2,187 sq. ft. / 203 m2  
Balcony :  
416 sq. ft. / 38 m2  
TOTAL  
2,603 sq. ft. / 241 m2



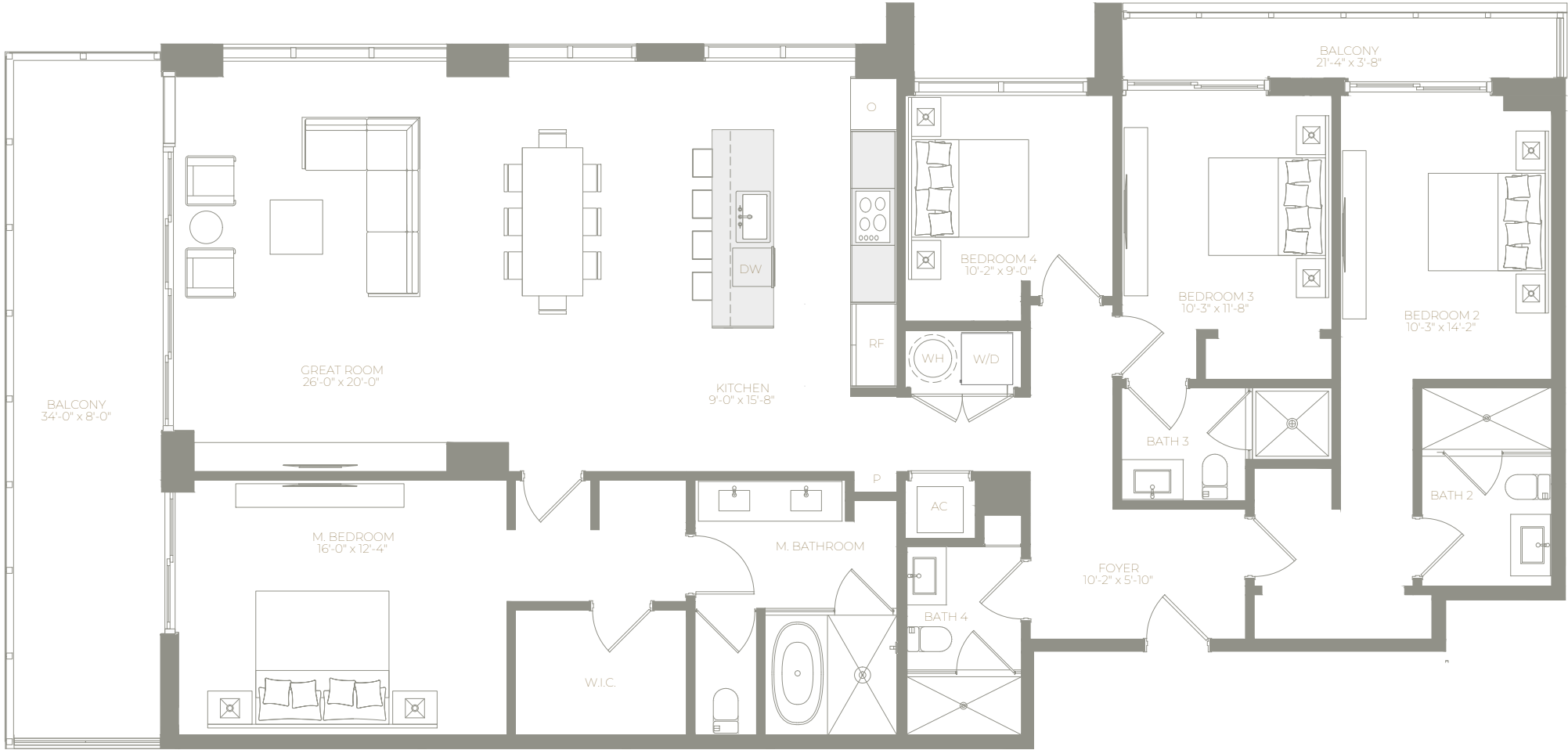
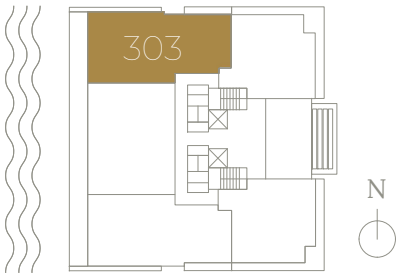
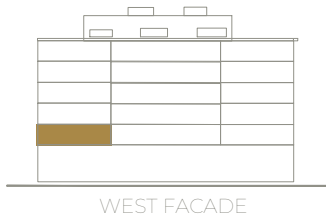
Plans are not to scale. All improvements, facilities, features and amenities are proposed only, preliminary and subject to change. The configuration, use of space and floor plan design are proposed and subject to change. All dimensions, square footages and square meters are approximate and subject to change. Balconies are not part of the proposed unit, but are proposed as limited common elements of the unit from which they are directly and exclusively accessible. Depictions of furnishings, fixtures and appliances are conceptual, for illustration purposes only and are not necessarily included in the units. Consult your purchase agreement for items included with your unit. No guarantees or representations are made that any improvement, facilities, features or amenities described or depicted will be provided or built, or, if provided or built, will be of the same type or nature described. There are various methods for measuring the dimensions of a unit and depending on the method used, the measurements and resulting square footage and square meters of a unit in advertising materials may vary from the measurements, square footage and square meters of a unit as stated or described in the prospectus and the declaration for the Condominium. Stated unit square footages, square meters and dimensions are measured to the exterior boundaries of the exterior walls and the centerline of interior demising walls, including structural walls and other interior structural components of the building, and in fact vary from the square footages, square meters and dimensions that would be determined by using the description and definition of the "Unit" set forth in the prospectus and Declaration (which generally only includes the interior airspace between the perimeter walls and excludes all interior structural components and common elements within the perimeter walls of the Unit).

# LEVEL 3

## UNIT 303

4 Bedrooms / 4 Bath

**AREA:**  
Unit :  
2,135 sq. ft. / 198 m 2  
Balcony :  
355sq. ft. / 33 m 2  
**TOTAL**  
2,490 sq. ft. / 231 m 2



Plans are not to scale. All improvements, facilities, features and amenities are proposed only, preliminary and subject to change. The configuration, use of space and floor plan design are proposed and subject to change. All dimensions, square footages and square meters are approximate and subject to change. Balconies are not part of the proposed unit, but are proposed as limited common elements of the unit from which they are directly and exclusively accessible. Depictions of furnishings, fixtures and appliances are conceptual, for illustration purposes only and are not necessarily included in the units. Consult your purchase agreement for items included with your unit. No guarantees or representations are made that any improvement, facilities, features or amenities described or depicted will be provided or built, or, if provided or built, will be of the same type or nature described. There are various methods for measuring the dimensions of a unit and depending on the method used, the measurements and resulting square footage and square meters of a unit in advertising materials may vary from the measurements, square footage and square meters of a unit as stated or described in the prospectus and the declaration for the Condominium. Stated unit square footages, square meters and dimensions are measured to the exterior boundaries of the exterior walls and the centerline of interior demising walls, including structural walls and other interior structural components of the building, and in fact vary from the square footages, square meters and dimensions that would be determined by using the description and definition of the "Unit" set forth in the prospectus and Declaration (which generally only includes the interior airspace between the perimeter walls and excludes all interior structural components and common elements within the perimeter walls of the Unit).

LEVEL 4

UNIT 402

3 Bedrooms + Den / 4.5 Bath

AREA:

Unit :

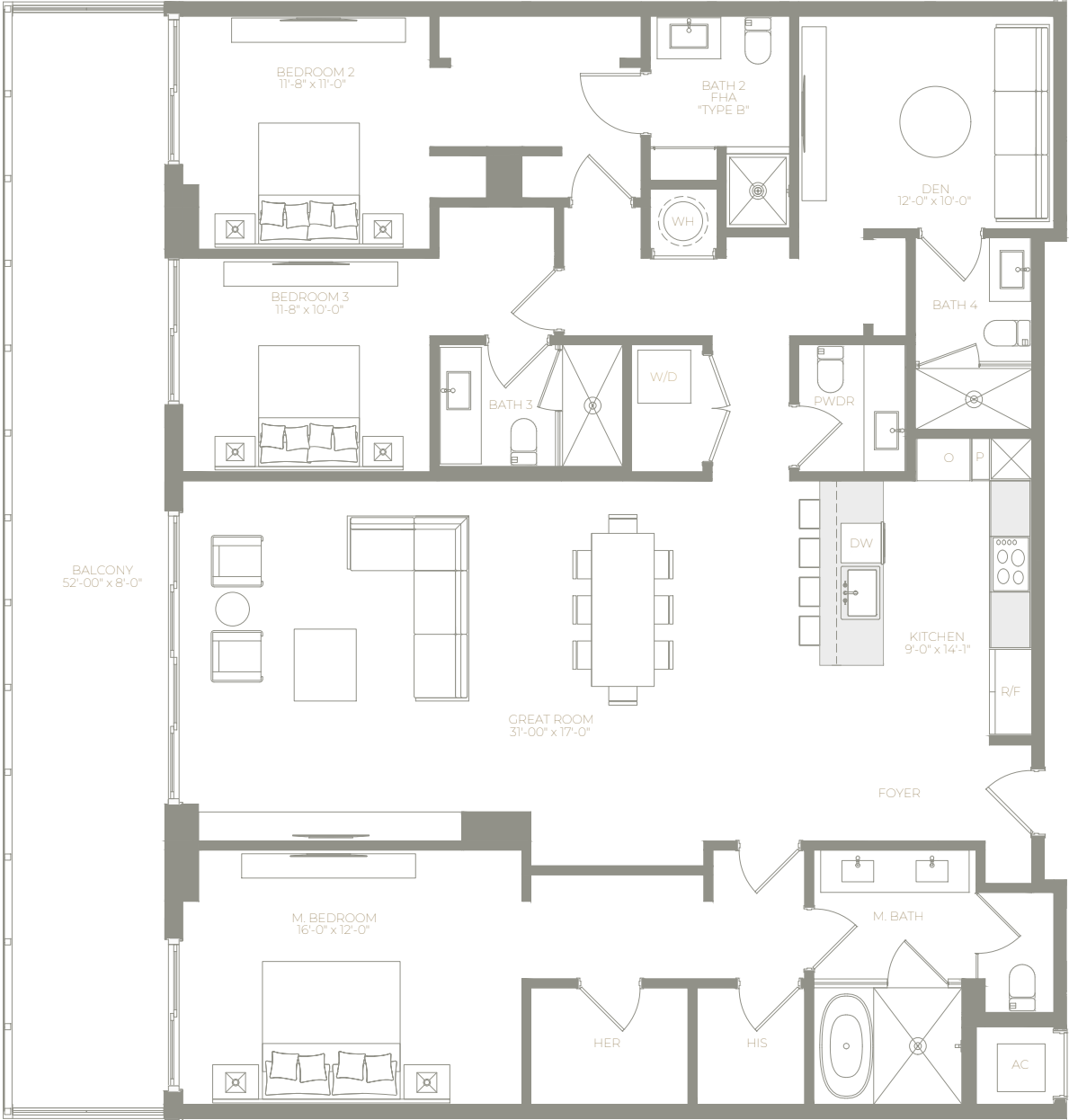
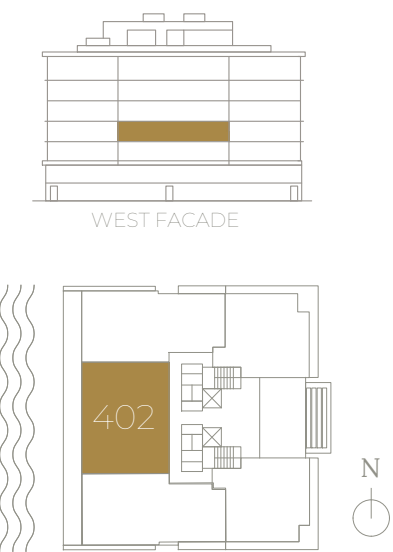
2,187 sq. ft. / 203 m2

Balcony :

421 sq. ft. / 39 m2

TOTAL

2,609 sq. ft. / 242 m2



Plans are not to scale. All improvements, facilities, features and amenities are proposed only, preliminary and subject to change. The configuration, use of space and floor plan design are proposed and subject to change. All dimensions, square footages and square meters are approximate and subject to change. Balconies are not part of the proposed unit, but are proposed as limited common elements of the unit from which they are directly and exclusively accessible. Depictions of furnishings, fixtures and appliances are conceptual, for illustration purposes only and are not necessarily included in the units. Consult your purchase agreement for items included with your unit. No guarantees or representations are made that any improvement, facilities, features or amenities described or depicted will be provided or built, or, if provided or built, will be of the same type or nature described. There are various methods for measuring the dimensions of a unit and depending on the method used, the measurements and resulting square footage and square meters of a unit in advertising materials may vary from the measurements, square footage and square meters of a unit as stated or described in the prospectus and the declaration for the Condominium. Stated unit square footages, square meters and dimensions are measured to the exterior boundaries of the exterior walls and the centerline of interior demising walls, including structural walls and other interior structural components of the building, and in fact vary from the square footages, square meters and dimensions that would be determined by using the description and definition of the "Unit" set forth in the prospectus and Declaration (which generally only includes the interior airspace between the perimeter walls and excludes all interior structural components and common elements within the perimeter walls of the Unit).

LEVEL 5

UNIT 502

3 Bedrooms + Den / 4.5 Bath

AREA:

Unit :

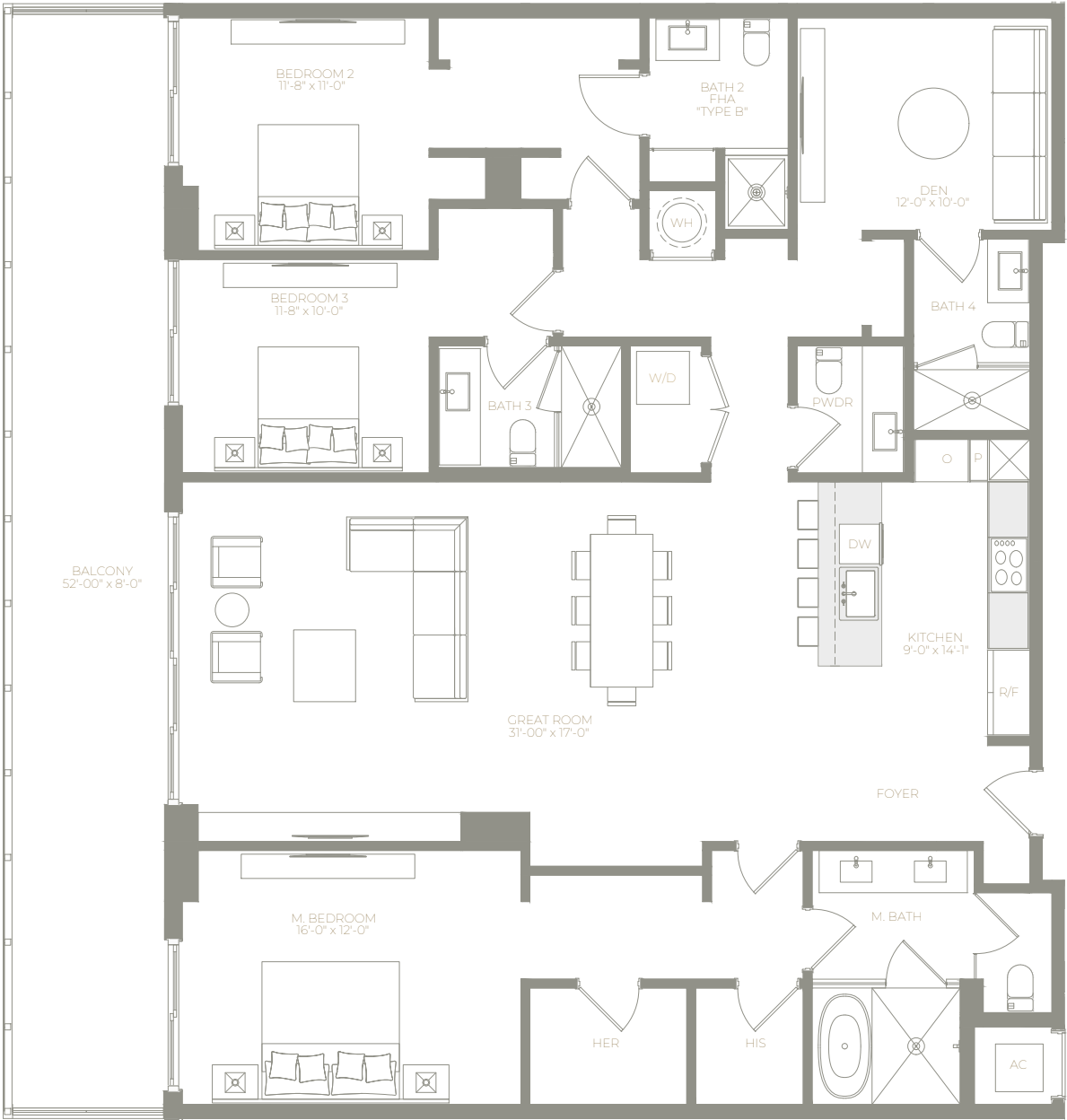
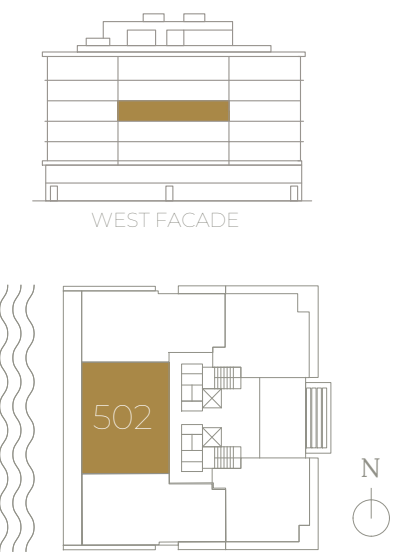
2,187 sq. ft. / 203 m2

Balcony :

416 sq. ft. / 38 m2

TOTAL

2,603 sq. ft. / 241 m2



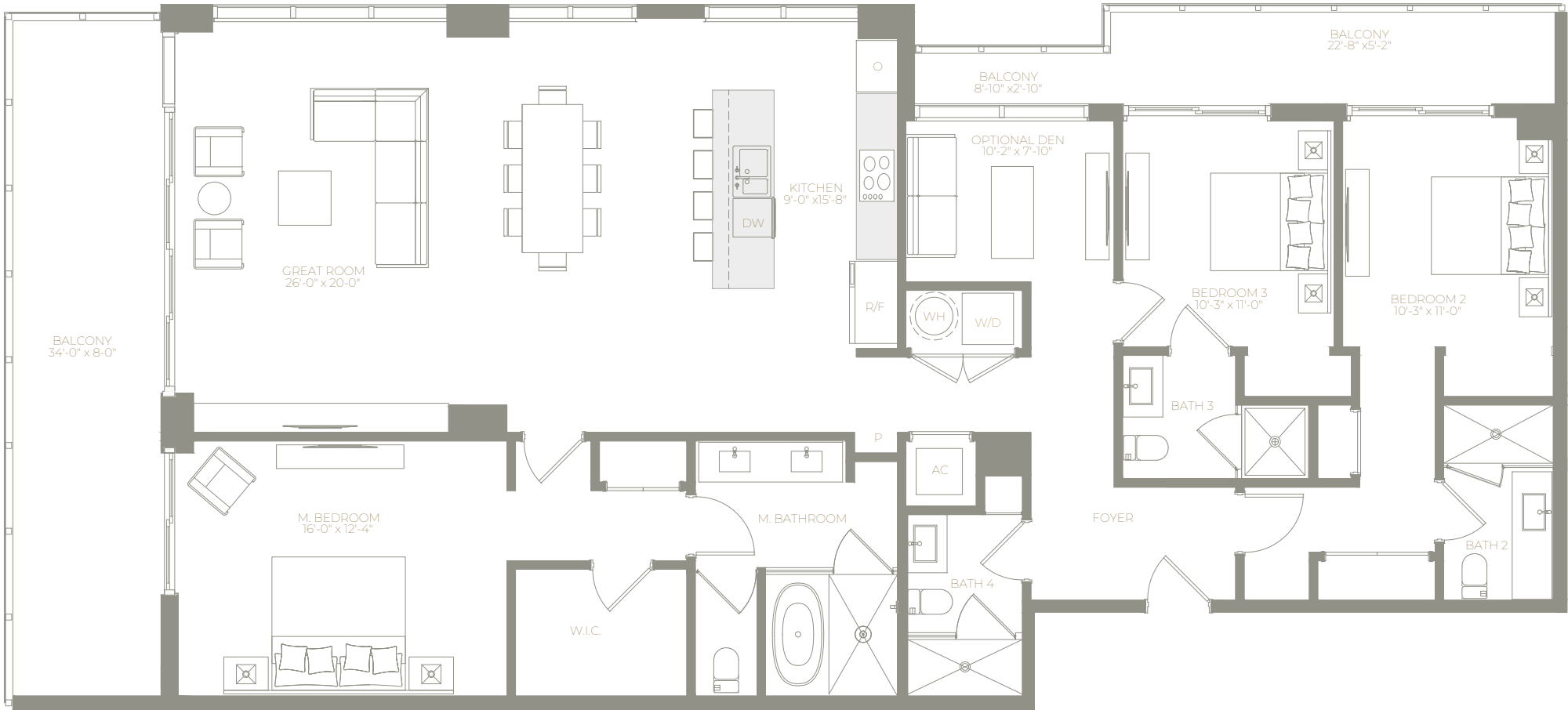
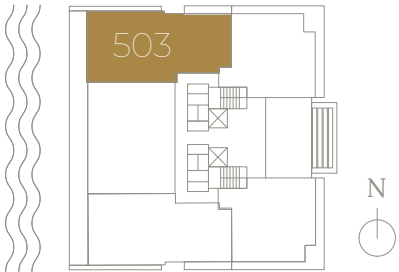
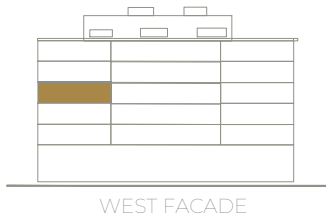
Plans are not to scale. All improvements, facilities, features and amenities are proposed only, preliminary and subject to change. The configuration, use of space and floor plan design are proposed and subject to change. All dimensions, square footages and square meters are approximate and subject to change. Balconies are not part of the proposed unit, but are proposed as limited common elements of the unit from which they are directly and exclusively accessible. Depictions of furnishings, fixtures and appliances are conceptual, for illustration purposes only and are not necessarily included in the units. Consult your purchase agreement for items included with your unit. No guarantees or representations are made that any improvement, facilities, features or amenities described or depicted will be provided or built, or, if provided or built, will be of the same type or nature described. There are various methods for measuring the dimensions of a unit and depending on the method used, the measurements and resulting square footage and square meters of a unit in advertising materials may vary from the measurements, square footage and square meters of a unit as stated or described in the prospectus and the declaration for the Condominium. Stated unit square footages, square meters and dimensions are measured to the exterior boundaries of the exterior walls and the centerline of interior demising walls, including structural walls and other interior structural components of the building, and in fact vary from the square footages, square meters and dimensions that would be determined by using the description and definition of the "Unit" set forth in the prospectus and Declaration (which generally only includes the interior airspace between the perimeter walls and excludes all interior structural components and common elements within the perimeter walls of the Unit).

# LEVEL 5

## UNIT 503

3 Bedrooms + Den / 4 Bath

**AREA:**  
Unit :  
2,049 sq. ft. / 190 m<sup>2</sup>  
Balcony :  
416 sq. ft. / 38 m<sup>2</sup>  
**TOTAL**  
2,466 sq. ft. / 229 m<sup>2</sup>



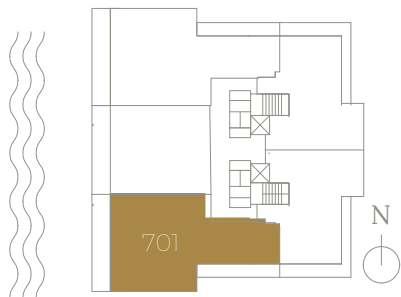
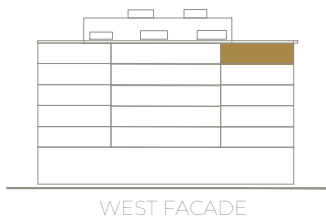
Plans are not to scale. All improvements, facilities, features and amenities are proposed only, preliminary and subject to change. The configuration, use of space and floor plan design are proposed and subject to change. All dimensions, square footages and square meters are approximate and subject to change. Balconies are not part of the proposed unit, but are proposed as limited common elements of the unit from which they are directly and exclusively accessible. Depictions of furnishings, fixtures and appliances are conceptual, for illustration purposes only and are not necessarily included in the units. Consult your purchase agreement for items included with your unit. No guarantees or representations are made that any improvement, facilities, features or amenities described or depicted will be provided or built, or, if provided or built, will be of the same type or nature described. There are various methods for measuring the dimensions of a unit and depending on the method used, the measurements and resulting square footage and square meters of a unit in advertising materials may vary from the measurements, square footage and square meters of a unit as stated or described in the prospectus and the declaration for the Condominium. Stated unit square footages, square meters and dimensions are measured to the exterior boundaries of the exterior walls and the centerline of interior demising walls, including structural walls and other interior structural components of the building, and in fact vary from the square footages, square meters and dimensions that would be determined by using the description and definition of the "Unit" set forth in the prospectus and Declaration (which generally only includes the interior airspace between the perimeter walls and excludes all interior structural components and common elements within the perimeter walls of the Unit).

# LEVEL 7

## UNIT 701

4 Bedrooms / 4.5 Bath

**AREA:**  
Unit :  
2,200 sq. ft. / 204 m<sup>2</sup>  
Balcony :  
528 sq. ft. / 49m<sup>2</sup>  
**TOTAL**  
2,728 sq. ft. / 253 m<sup>2</sup>



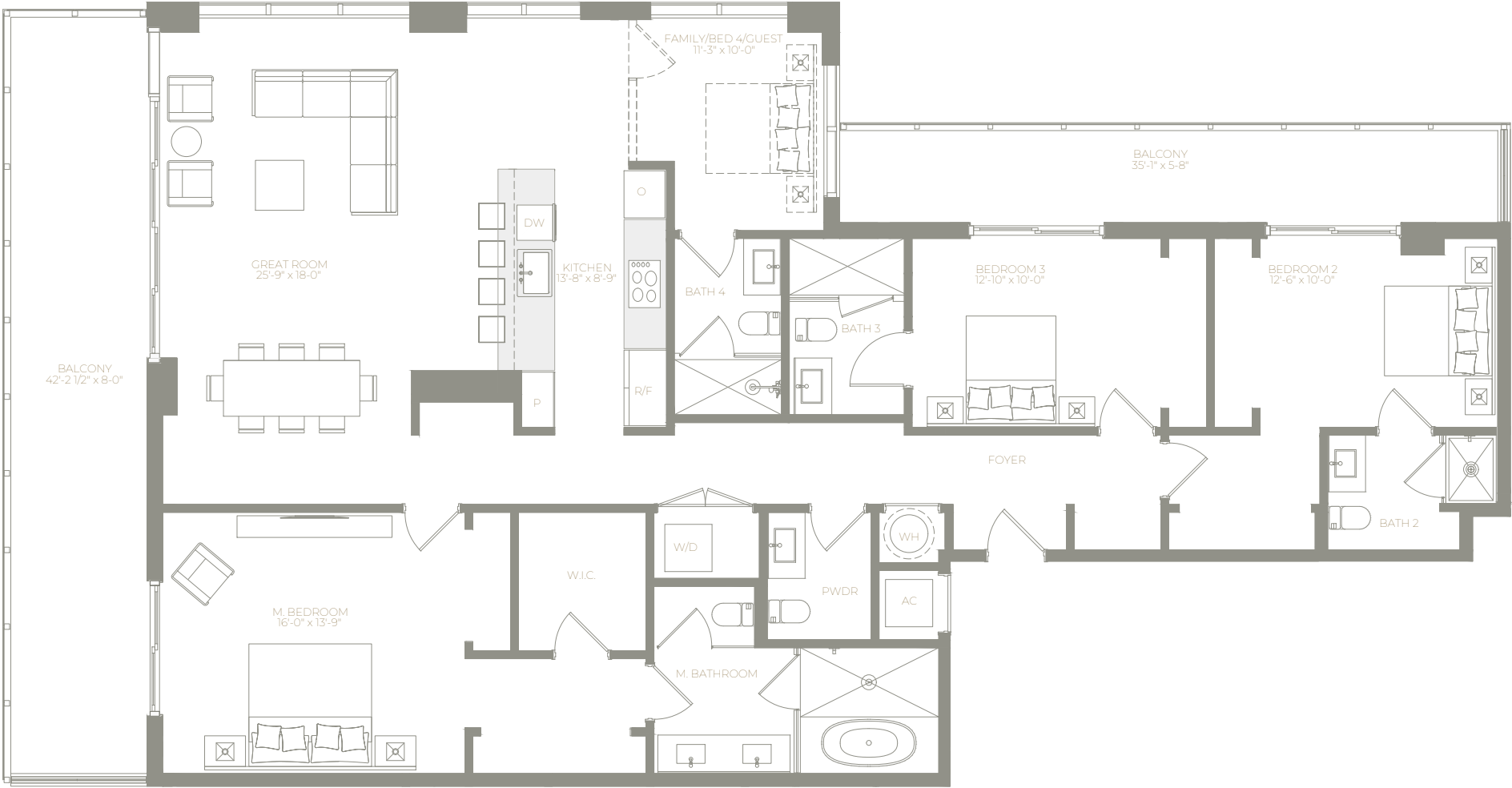
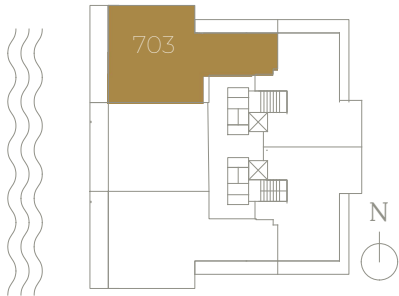
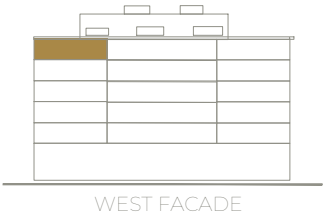
Plans are not to scale. All improvements, facilities, features and amenities are proposed only, preliminary and subject to change. The configuration, use of space and floor plan design are proposed and subject to change. All dimensions, square footages and square meters are approximate and subject to change. Balconies are not part of the proposed unit, but are proposed as limited common elements of the unit from which they are directly and exclusively accessible. Depictions of furnishings, fixtures and appliances are conceptual, for illustration purposes only and are not necessarily included in the units. Consult your purchase agreement for items included with your unit. No guarantees or representations are made that any improvement, facilities, features or amenities described or depicted will be provided or built, or, if provided or built, will be of the same type or nature described. There are various methods for measuring the dimensions of a unit and depending on the method used, the measurements and resulting square footage and square meters of a unit in advertising materials may vary from the measurements, square footage and square meters of a unit as stated or described in the prospectus and the declaration for the Condominium. Stated unit square footages, square meters and dimensions are measured to the exterior boundaries of the exterior walls and the centerline of interior demising walls, including structural walls and other interior structural components of the building, and in fact vary from the square footages, square meters and dimensions that would be determined by using the description and definition of the "Unit" set forth in the prospectus and Declaration (which generally only includes the interior airspace between the perimeter walls and excludes all interior structural components and common elements within the perimeter walls of the Unit).

# LEVEL 7

## UNIT 703

4 Bedrooms / 4.5 Bath

**AREA:**  
Unit :  
2,200 sq. ft. / 204 m<sup>2</sup>  
Balcony :  
528 sq. ft. / 49m<sup>2</sup>  
**TOTAL**  
2,728 sq. ft. / 253 m<sup>2</sup>



Plans are not to scale. All improvements, facilities, features and amenities are proposed only, preliminary and subject to change. The configuration, use of space and floor plan design are proposed and subject to change. All dimensions, square footages and square meters are approximate and subject to change. Balconies are not part of the proposed unit, but are proposed as limited common elements of the unit from which they are directly and exclusively accessible. Depictions of furnishings, fixtures and appliances are conceptual, for illustration purposes only and are not necessarily included in the units. Consult your purchase agreement for items included with your unit. No guarantees or representations are made that any improvement, facilities, features or amenities described or depicted will be provided or built, or, if provided or built, will be of the same type or nature described. There are various methods for measuring the dimensions of a unit and depending on the method used, the measurements and resulting square footage and square meters of a unit in advertising materials may vary from the measurements, square footage and square meters of a unit as stated or described in the prospectus and the declaration for the Condominium. Stated unit square footages, square meters and dimensions are measured to the exterior boundaries of the exterior walls and the centerline of interior demising walls, including structural walls and other interior structural components of the building, and in fact vary from the square footages, square meters and dimensions that would be determined by using the description and definition of the "Unit" set forth in the prospectus and Declaration (which generally only includes the interior airspace between the perimeter walls and excludes all interior structural components and common elements within the perimeter walls of the Unit).