



THE RITZ - CARLTON RESIDENCES

SARASOTA BAY



THE RITZ - CARLTON RESIDENCES

SARASOTA BAY

RESIDENCE **A**

The Ritz-Carlton Residences, Sarasota Bay are not owned, developed or sold by Marriott International, Inc. or its affiliates ("Ritz-Carlton"). KT Sarasota South, LLC uses The Ritz-Carlton marks under a license from Ritz-Carlton, which has not confirmed the accuracy of any of the statements or representations made herein.

Broker Participation Welcomed and Encouraged. ORAL REPRESENTATIONS CANNOT BE RELIED UPON AS CORRECTLY STATING REPRESENTATIONS OF THE SELLER. FOR CORRECT REPRESENTATIONS, MAKE REFERENCE TO THIS BROCHURE AND TO THE DOCUMENTS REQUIRED BY SECTION 718.503, FLORIDA STATUTES, TO BE FURNISHED BY A SELLER TO A BUYER OR LESSEE. This project has been filed in the state of Florida and no other state. This is not an offer to sell or solicitation of offers to buy the condominium units in states where such offer or solicitation cannot be made. Prices and availability are subject to change at any time without notice.

All dimensions are approximate and all floorplans and development plans are subject to change. There are various methods for calculating the total square footage of a condominium unit, and depending on the method of calculation, the quoted square footage of a condominium unit may vary by more than a nominal amount. The total condominium unit square footages as shown in this brochure are based on the "Architectural Method" of measurement and the exterior perimeter measurements of the condominium unit, which include exterior walls, interior columns and fifty percent of demising walls. These square footage calculations are higher than the interior area space calculations for the condominium units. Please see the Declaration of Condominium for more information.



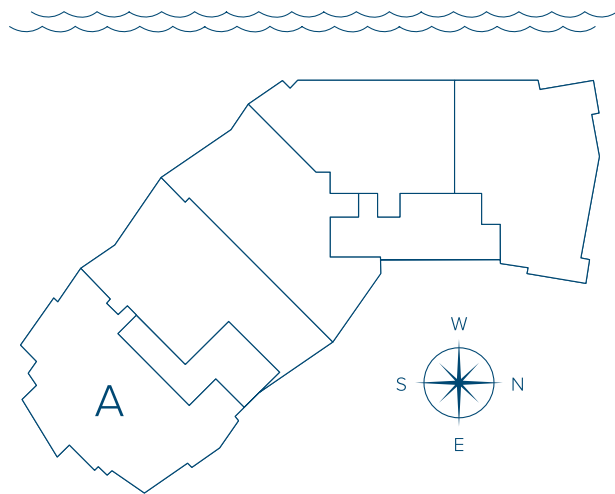
PRESENTED BY
KOLTER

RESIDENCE A

4 Bedroom + Den | 4.5 Bathroom

LEVELS 4 – 16

INTERIOR	4,223 SF
EXTERIOR	598 SF
TOTAL	4,821 SF





THE RITZ - CARLTON RESIDENCES

SARASOTA BAY



THE RITZ - CARLTON RESIDENCES

SARASOTA BAY

RESIDENCE **B**

The Ritz-Carlton Residences, Sarasota Bay are not owned, developed or sold by Marriott International, Inc. or its affiliates ("Ritz-Carlton"). KT Sarasota South, LLC uses The Ritz-Carlton marks under a license from Ritz-Carlton, which has not confirmed the accuracy of any of the statements or representations made herein.

Broker Participation Welcomed and Encouraged. ORAL REPRESENTATIONS CANNOT BE RELIED UPON AS CORRECTLY STATING REPRESENTATIONS OF THE SELLER. FOR CORRECT REPRESENTATIONS, MAKE REFERENCE TO THIS BROCHURE AND TO THE DOCUMENTS REQUIRED BY SECTION 718.503, FLORIDA STATUTES, TO BE FURNISHED BY A SELLER TO A BUYER OR LESSEE. This project has been filed in the state of Florida and no other state. This is not an offer to sell or solicitation of offers to buy the condominium units in states where such offer or solicitation cannot be made. Prices and availability are subject to change at any time without notice.

All dimensions are approximate and all floorplans and development plans are subject to change. There are various methods for calculating the total square footage of a condominium unit, and depending on the method of calculation, the quoted square footage of a condominium unit may vary by more than a nominal amount. The total condominium unit square footages as shown in this brochure are based on the "Architectural Method" of measurement and the exterior perimeter measurements of the condominium unit, which include exterior walls, interior columns and fifty percent of demising walls. These square footage calculations are higher than the interior area space calculations for the condominium units. Please see the Declaration of Condominium for more information.



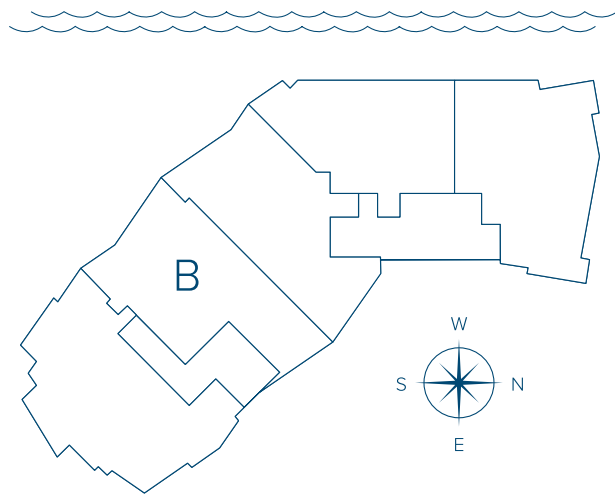
PRESENTED BY
KOLTER

RESIDENCE B

3 Bedroom + Den | 3.5 Bathroom

LEVELS 4 – 16

INTERIOR	3,984 SF
EXTERIOR	576 SF
TOTAL	4,560 SF





THE RITZ - CARLTON RESIDENCES

SARASOTA BAY



THE RITZ - CARLTON RESIDENCES

SARASOTA BAY

RESIDENCE C

The Ritz-Carlton Residences, Sarasota Bay are not owned, developed or sold by Marriott International, Inc. or its affiliates ("Ritz-Carlton"). KT Sarasota South, LLC uses The Ritz-Carlton marks under a license from Ritz-Carlton, which has not confirmed the accuracy of any of the statements or representations made herein.

Broker Participation Welcomed and Encouraged. ORAL REPRESENTATIONS CANNOT BE RELIED UPON AS CORRECTLY STATING REPRESENTATIONS OF THE SELLER. FOR CORRECT REPRESENTATIONS, MAKE REFERENCE TO THIS BROCHURE AND TO THE DOCUMENTS REQUIRED BY SECTION 718.503, FLORIDA STATUTES, TO BE FURNISHED BY A SELLER TO A BUYER OR LESSEE. This project has been filed in the state of Florida and no other state. This is not an offer to sell or solicitation of offers to buy the condominium units in states where such offer or solicitation cannot be made. Prices and availability are subject to change at any time without notice.

All dimensions are approximate and all floorplans and development plans are subject to change. There are various methods for calculating the total square footage of a condominium unit, and depending on the method of calculation, the quoted square footage of a condominium unit may vary by more than a nominal amount. The total condominium unit square footages as shown in this brochure are based on the "Architectural Method" of measurement and the exterior perimeter measurements of the condominium unit, which include exterior walls, interior columns and fifty percent of demising walls. These square footage calculations are higher than the interior area space calculations for the condominium units. Please see the Declaration of Condominium for more information.



PRESENTED BY
KOLTER

RESIDENCE C

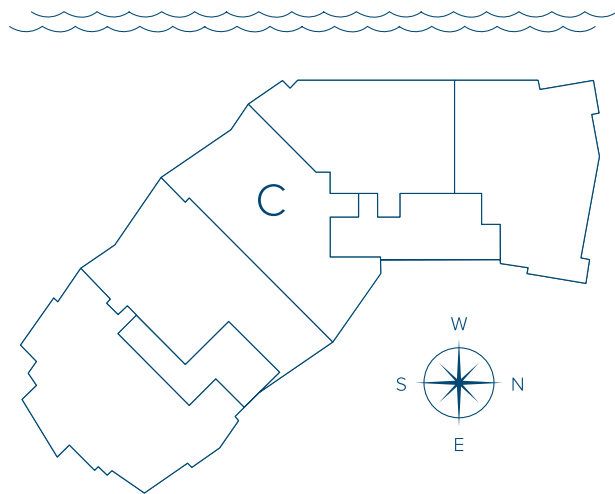
3 Bedroom + Den | 3.5 Bathroom

LEVELS 4 – 16

INTERIOR 3,838 SF

EXTERIOR 581 SF

TOTAL 4,419 SF





THE RITZ - CARLTON RESIDENCES

SARASOTA BAY



THE RITZ - CARLTON RESIDENCES

SARASOTA BAY

RESIDENCE **D**

The Ritz-Carlton Residences, Sarasota Bay are not owned, developed or sold by Marriott International, Inc. or its affiliates ("Ritz-Carlton"). KT Sarasota South, LLC uses The Ritz-Carlton marks under a license from Ritz-Carlton, which has not confirmed the accuracy of any of the statements or representations made herein.

Broker Participation Welcomed and Encouraged. ORAL REPRESENTATIONS CANNOT BE RELIED UPON AS CORRECTLY STATING REPRESENTATIONS OF THE SELLER. FOR CORRECT REPRESENTATIONS, MAKE REFERENCE TO THIS BROCHURE AND TO THE DOCUMENTS REQUIRED BY SECTION 718.503, FLORIDA STATUTES, TO BE FURNISHED BY A SELLER TO A BUYER OR LESSEE. This project has been filed in the state of Florida and no other state. This is not an offer to sell or solicitation of offers to buy the condominium units in states where such offer or solicitation cannot be made. Prices and availability are subject to change at any time without notice.

All dimensions are approximate and all floorplans and development plans are subject to change. There are various methods for calculating the total square footage of a condominium unit, and depending on the method of calculation, the quoted square footage of a condominium unit may vary by more than a nominal amount. The total condominium unit square footages as shown in this brochure are based on the "Architectural Method" of measurement and the exterior perimeter measurements of the condominium unit, which include exterior walls, interior columns and fifty percent of demising walls. These square footage calculations are higher than the interior area space calculations for the condominium units. Please see the Declaration of Condominium for more information.



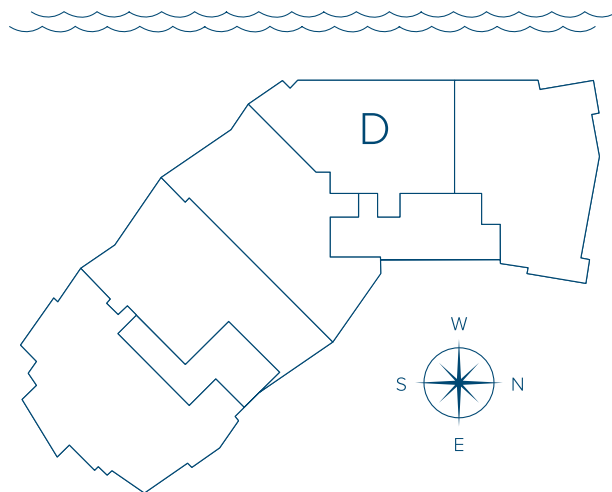
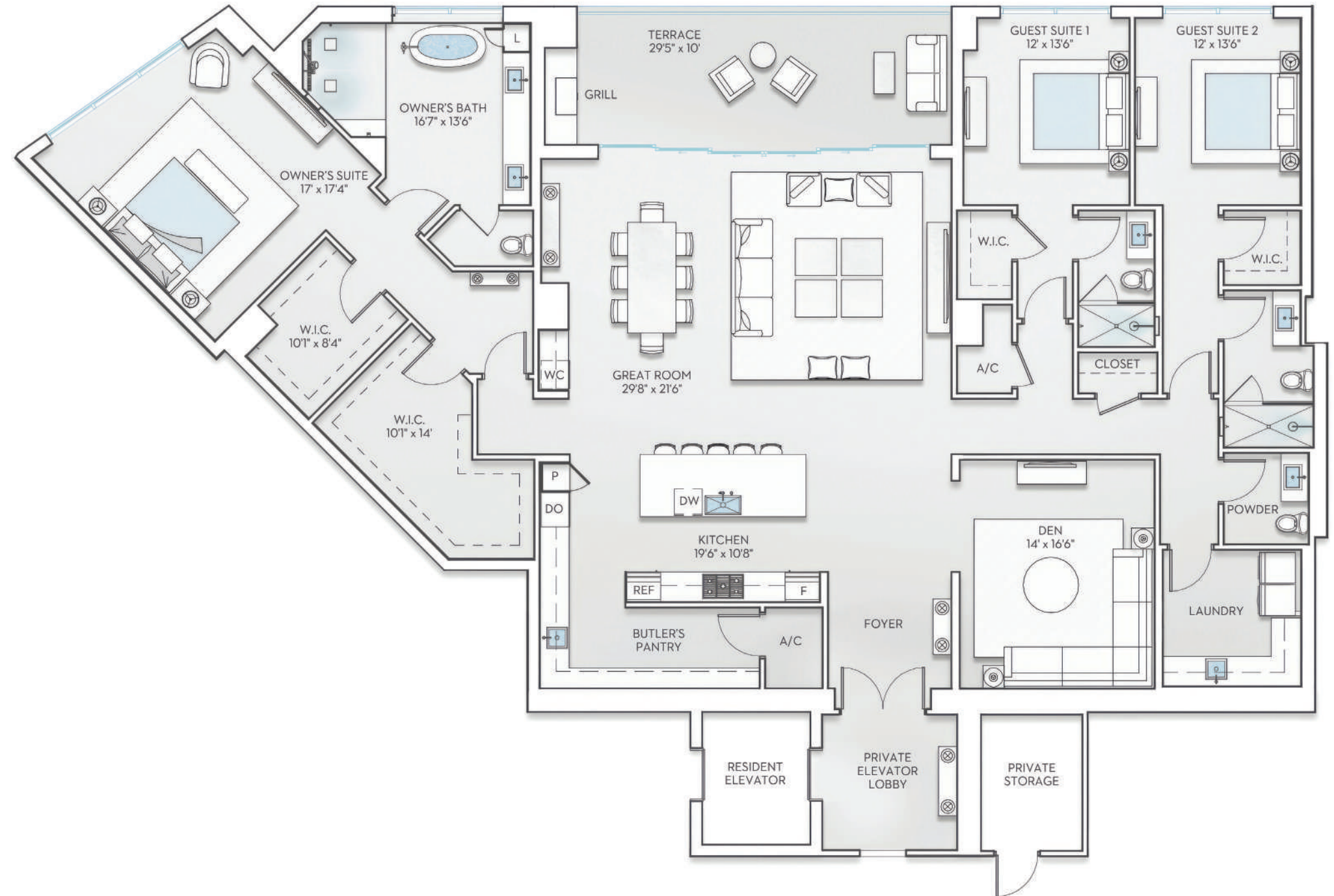
PRESENTED BY
KOLTER

RESIDENCE D

3 Bedroom + Den | 3.5 Bathroom

LEVELS 4 – 16

INTERIOR	3,556 SF
EXTERIOR	274 SF
TOTAL	3,830 SF





THE RITZ - CARLTON RESIDENCES

SARASOTA BAY



THE RITZ - CARLTON RESIDENCES

SARASOTA BAY

RESIDENCE **E**

The Ritz-Carlton Residences, Sarasota Bay are not owned, developed or sold by Marriott International, Inc. or its affiliates ("Ritz-Carlton"). KT Sarasota South, LLC uses The Ritz-Carlton marks under a license from Ritz-Carlton, which has not confirmed the accuracy of any of the statements or representations made herein.

Broker Participation Welcomed and Encouraged. ORAL REPRESENTATIONS CANNOT BE RELIED UPON AS CORRECTLY STATING REPRESENTATIONS OF THE SELLER. FOR CORRECT REPRESENTATIONS, MAKE REFERENCE TO THIS BROCHURE AND TO THE DOCUMENTS REQUIRED BY SECTION 718.503, FLORIDA STATUTES, TO BE FURNISHED BY A SELLER TO A BUYER OR LESSEE. This project has been filed in the state of Florida and no other state. This is not an offer to sell or solicitation of offers to buy the condominium units in states where such offer or solicitation cannot be made. Prices and availability are subject to change at any time without notice.

All dimensions are approximate and all floorplans and development plans are subject to change. There are various methods for calculating the total square footage of a condominium unit, and depending on the method of calculation, the quoted square footage of a condominium unit may vary by more than a nominal amount. The total condominium unit square footages as shown in this brochure are based on the "Architectural Method" of measurement and the exterior perimeter measurements of the condominium unit, which include exterior walls, interior columns and fifty percent of demising walls. These square footage calculations are higher than the interior area space calculations for the condominium units. Please see the Declaration of Condominium for more information.



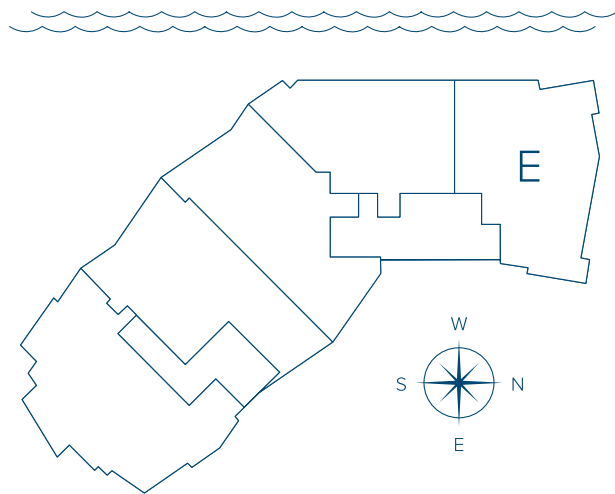
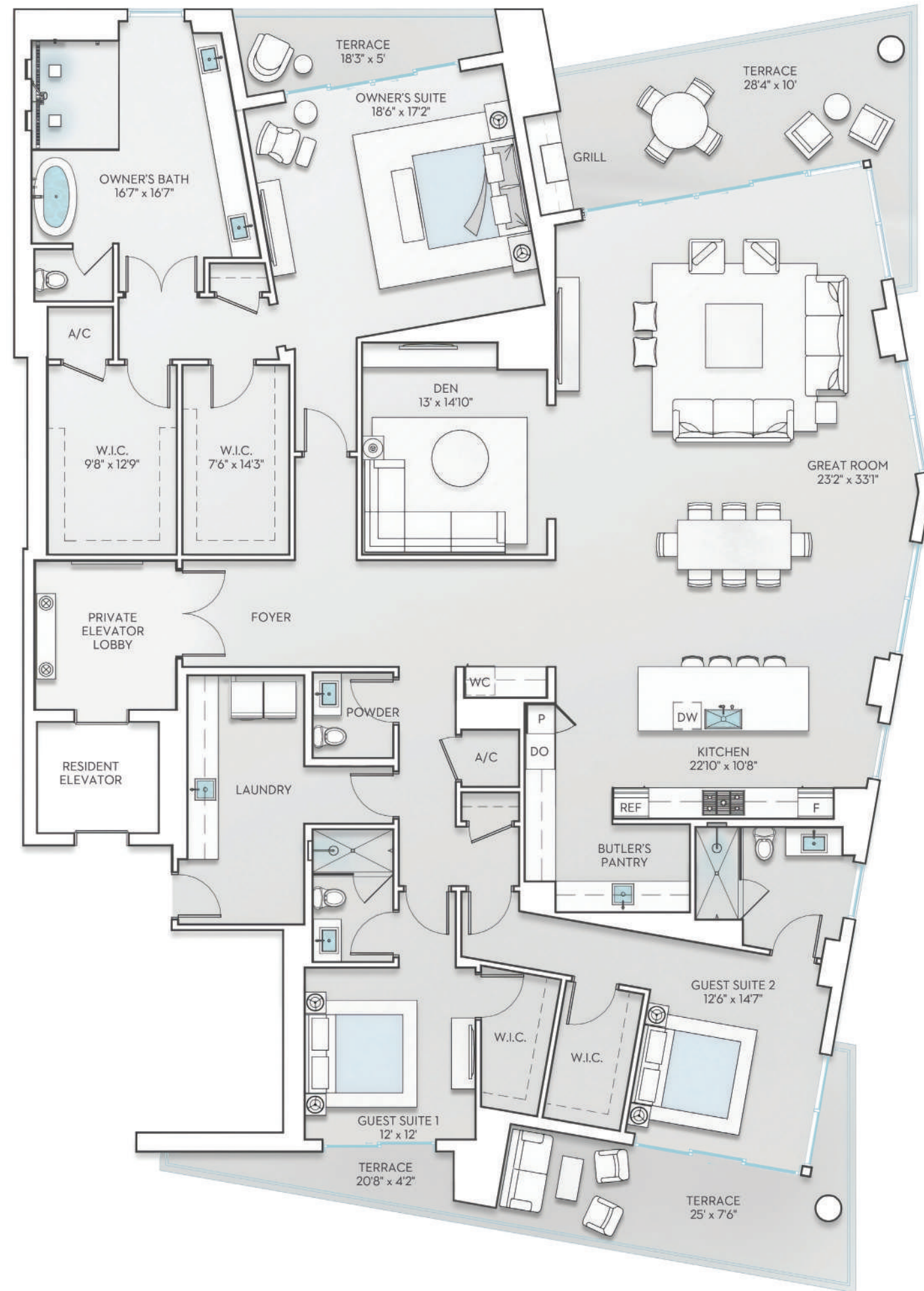
PRESENTED BY
KOLTER

RESIDENCE E

3 Bedroom + Den | 3.5 Bathroom

LEVELS 4 – 16

INTERIOR	4,001 SF
EXTERIOR	662 SF
TOTAL	4,663 SF





THE RITZ - CARLTON RESIDENCES

SARASOTA BAY



THE RITZ - CARLTON RESIDENCES

SARASOTA BAY

PENTHOUSE F

The Ritz-Carlton Residences, Sarasota Bay are not owned, developed or sold by Marriott International, Inc. or its affiliates ("Ritz-Carlton"). KT Sarasota South, LLC uses The Ritz-Carlton marks under a license from Ritz-Carlton, which has not confirmed the accuracy of any of the statements or representations made herein.

Sotheby's International Realty® and the Sotheby's International Realty logo are registered service marks used with permission. Each office is independently owned and operated. Equal Housing Opportunity.

Broker Participation Welcomed and Encouraged. ORAL REPRESENTATIONS CANNOT BE RELIED UPON AS CORRECTLY STATING REPRESENTATIONS OF THE SELLER. FOR CORRECT REPRESENTATIONS, MAKE REFERENCE TO THIS BROCHURE AND TO THE DOCUMENTS REQUIRED BY SECTION 718.503, FLORIDA STATUTES, TO BE FURNISHED BY A SELLER TO A BUYER OR LESSEE. This project has been filed in the state of Florida and no other state. This is not an offer to sell or solicitation of offers to buy the condominium units in states where such offer or solicitation cannot be made. Prices and availability are subject to change at any time without notice. All dimensions are approximate and all floorplans and development plans are subject to change. There are various methods for calculating the total square footage of a condominium unit, and depending on the method of calculation, the quoted square footage of a condominium unit may vary by more than a nominal amount. The total condominium unit square footages as shown in this brochure are based on the "Architectural Method" of measurement and the exterior perimeter measurements of the condominium unit, which include exterior walls, interior columns and fifty percent of demising walls. These square footage calculations are higher than the interior area space calculations for the condominium units. Please see the Declaration of Condominium for more information. Printed September 2024.

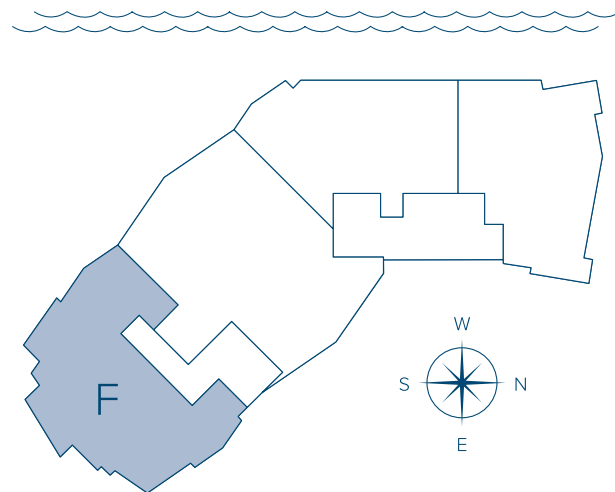


PENTHOUSE F

4 Bedroom + Family Room | 4.5 Bathroom

LEVEL 20

INTERIOR	4,926 SF
EXTERIOR	598 SF
TOTAL	5,524 SF





THE RITZ - CARLTON RESIDENCES

SARASOTA BAY



THE RITZ - CARLTON RESIDENCES

SARASOTA BAY

Penthouse **G**

The Ritz-Carlton Residences, Sarasota Bay are not owned, developed or sold by Marriott International, Inc. or its affiliates ("Ritz-Carlton"). KT Sarasota South, LLC uses The Ritz-Carlton marks under a license from Ritz-Carlton, which has not confirmed the accuracy of any of the statements or representations made herein.

Broker Participation Welcomed and Encouraged. ORAL REPRESENTATIONS CANNOT BE RELIED UPON AS CORRECTLY STATING REPRESENTATIONS OF THE SELLER. FOR CORRECT REPRESENTATIONS, MAKE REFERENCE TO THIS BROCHURE AND TO THE DOCUMENTS REQUIRED BY SECTION 718.503, FLORIDA STATUTES, TO BE FURNISHED BY A SELLER TO A BUYER OR LESSEE. This project has been filed in the state of Florida and no other state. This is not an offer to sell or solicitation of offers to buy the condominium units in states where such offer or solicitation cannot be made. Prices and availability are subject to change at any time without notice.

All dimensions are approximate and all floorplans and development plans are subject to change. There are various methods for calculating the total square footage of a condominium unit, and depending on the method of calculation, the quoted square footage of a condominium unit may vary by more than a nominal amount. The total condominium unit square footages as shown in this brochure are based on the "Architectural Method" of measurement and the exterior perimeter measurements of the condominium unit, which include exterior walls, interior columns and fifty percent of demising walls. These square footage calculations are higher than the interior area space calculations for the condominium units. Please see the Declaration of Condominium for more information.



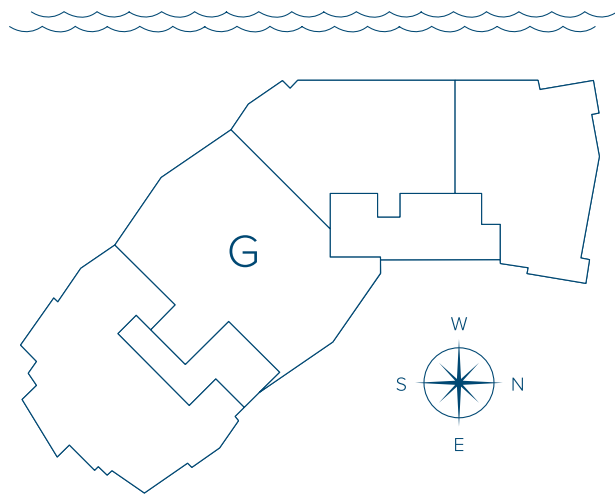
PRESENTED BY
KOLTER

Penthouse G

4 Bedroom + Family Room | 4.5 Bathroom

LEVEL 20

INTERIOR	5,816 SF
EXTERIOR	1,373 SF
TOTAL	7,189 SF





THE RITZ - CARLTON RESIDENCES

SARASOTA BAY



THE RITZ - CARLTON RESIDENCES

SARASOTA BAY

Penthouse **H**

The Ritz-Carlton Residences, Sarasota Bay are not owned, developed or sold by Marriott International, Inc. or its affiliates ("Ritz-Carlton"). KT Sarasota South, LLC uses The Ritz-Carlton marks under a license from Ritz-Carlton, which has not confirmed the accuracy of any of the statements or representations made herein.

Broker Participation Welcomed and Encouraged. ORAL REPRESENTATIONS CANNOT BE RELIED UPON AS CORRECTLY STATING REPRESENTATIONS OF THE SELLER. FOR CORRECT REPRESENTATIONS, MAKE REFERENCE TO THIS BROCHURE AND TO THE DOCUMENTS REQUIRED BY SECTION 718.503, FLORIDA STATUTES, TO BE FURNISHED BY A SELLER TO A BUYER OR LESSEE. This project has been filed in the state of Florida and no other state. This is not an offer to sell or solicitation of offers to buy the condominium units in states where such offer or solicitation cannot be made. Prices and availability are subject to change at any time without notice.

All dimensions are approximate and all floorplans and development plans are subject to change. There are various methods for calculating the total square footage of a condominium unit, and depending on the method of calculation, the quoted square footage of a condominium unit may vary by more than a nominal amount. The total condominium unit square footages as shown in this brochure are based on the "Architectural Method" of measurement and the exterior perimeter measurements of the condominium unit, which include exterior walls, interior columns and fifty percent of demising walls. These square footage calculations are higher than the interior area space calculations for the condominium units. Please see the Declaration of Condominium for more information.



PRESENTED BY
KOLTER

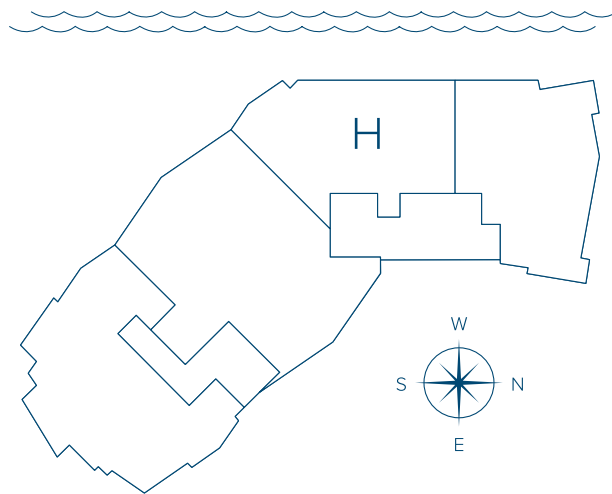
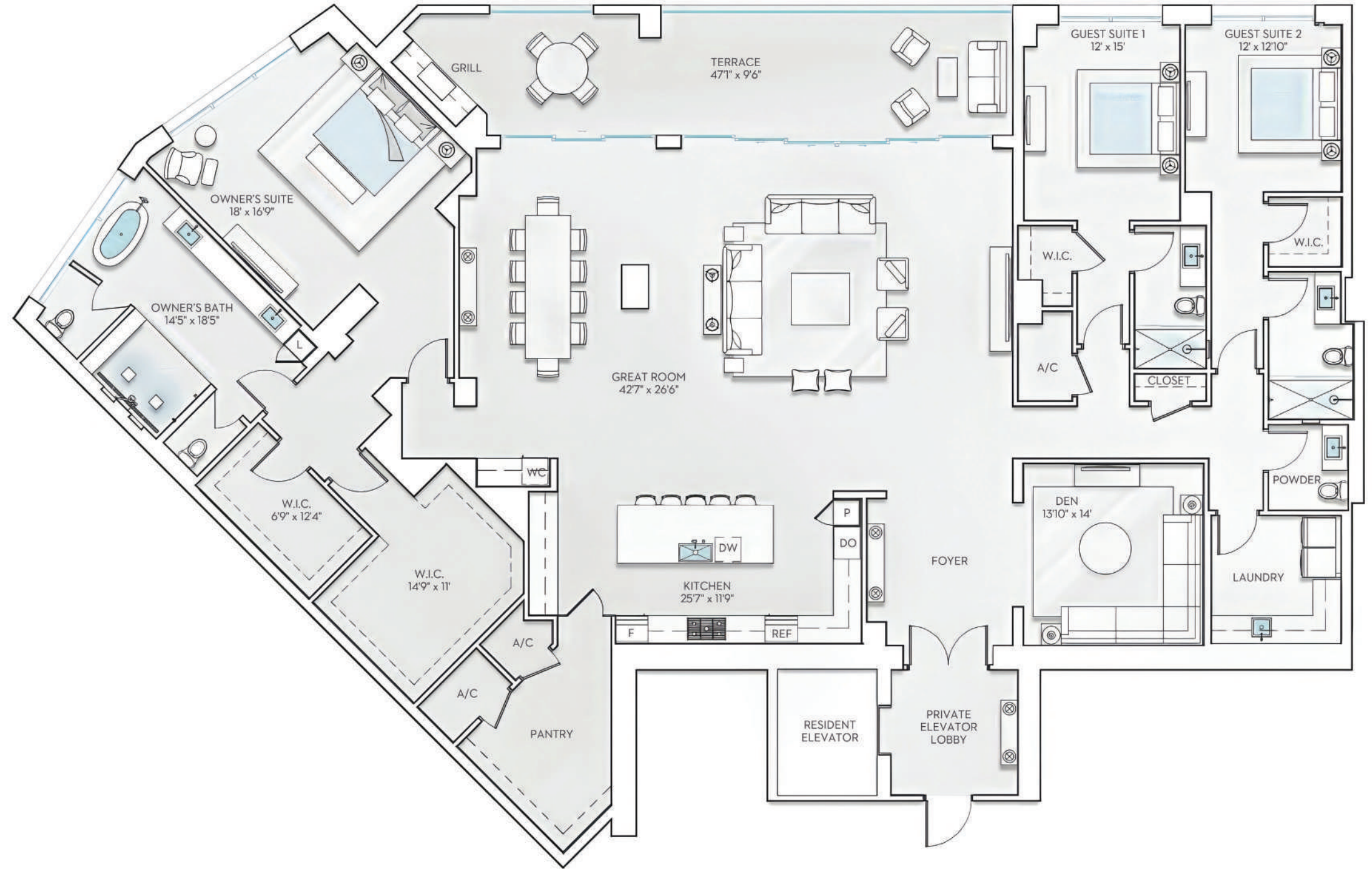
5

Penthouse H

3 Bedroom + Den | 3.5 Bathroom

LEVEL 20

INTERIOR	4,360 SF
EXTERIOR	454 SF
TOTAL	4,814 SF





THE RITZ - CARLTON RESIDENCES

SARASOTA BAY



THE RITZ - CARLTON RESIDENCES

SARASOTA BAY

Penthouse **J**

The Ritz-Carlton Residences, Sarasota Bay are not owned, developed or sold by Marriott International, Inc. or its affiliates ("Ritz-Carlton"). KT Sarasota South, LLC uses The Ritz-Carlton marks under a license from Ritz-Carlton, which has not confirmed the accuracy of any of the statements or representations made herein.

Broker Participation Welcomed and Encouraged. ORAL REPRESENTATIONS CANNOT BE RELIED UPON AS CORRECTLY STATING REPRESENTATIONS OF THE SELLER. FOR CORRECT REPRESENTATIONS, MAKE REFERENCE TO THIS BROCHURE AND TO THE DOCUMENTS REQUIRED BY SECTION 718.503, FLORIDA STATUTES, TO BE FURNISHED BY A SELLER TO A BUYER OR LESSEE. This project has been filed in the state of Florida and no other state. This is not an offer to sell or solicitation of offers to buy the condominium units in states where such offer or solicitation cannot be made. Prices and availability are subject to change at any time without notice.

All dimensions are approximate and all floorplans and development plans are subject to change. There are various methods for calculating the total square footage of a condominium unit, and depending on the method of calculation, the quoted square footage of a condominium unit may vary by more than a nominal amount. The total condominium unit square footages as shown in this brochure are based on the "Architectural Method" of measurement and the exterior perimeter measurements of the condominium unit, which include exterior walls, interior columns and fifty percent of demising walls. These square footage calculations are higher than the interior area space calculations for the condominium units. Please see the Declaration of Condominium for more information.



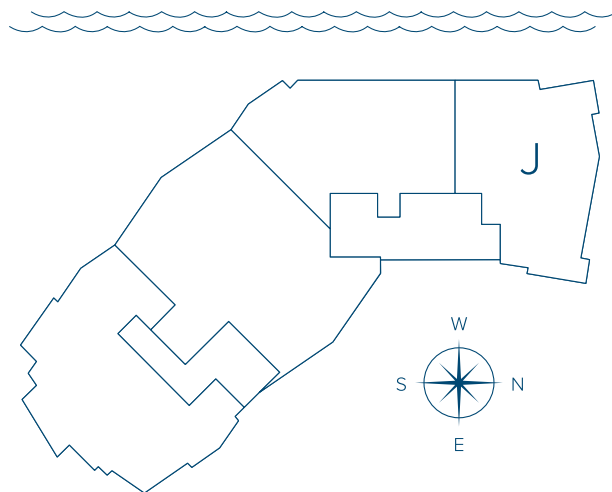
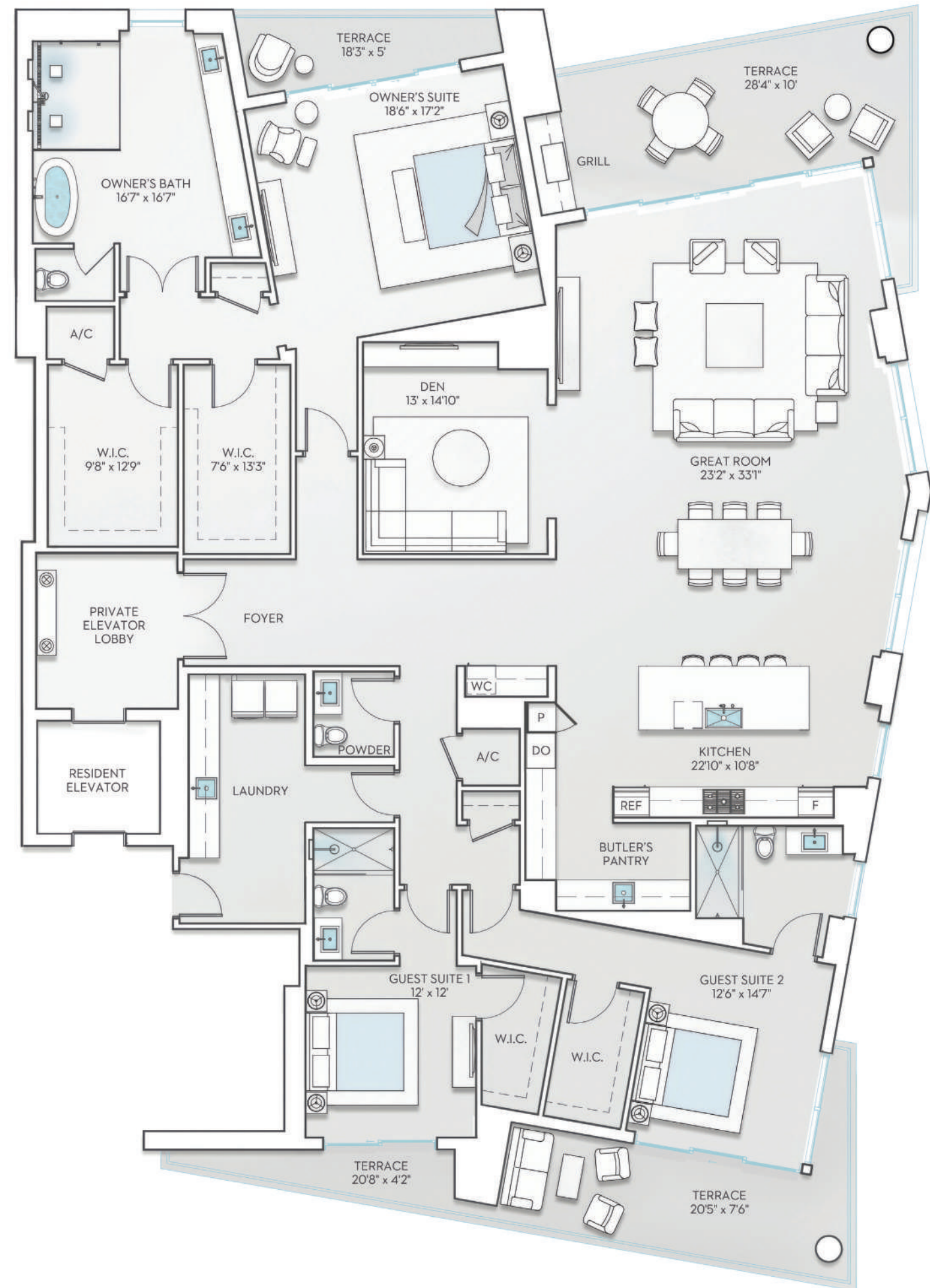
PRESENTED BY
KOLTER

Penthouse J

4 Bedroom + Den | 4.5 Bathroom

LEVEL 20

INTERIOR	4,001 SF
EXTERIOR	662 SF
TOTAL	4,663 SF





THE RITZ - CARLTON RESIDENCES

SARASOTA BAY



THE RITZ - CARLTON RESIDENCES

SARASOTA BAY

ESTATE F

The Ritz-Carlton Residences, Sarasota Bay are not owned, developed or sold by Marriott International, Inc. or its affiliates ("Ritz-Carlton"). KT Sarasota South, LLC uses The Ritz-Carlton marks under a license from Ritz-Carlton, which has not confirmed the accuracy of any of the statements or representations made herein.

Sotheby's International Realty® and the Sotheby's International Realty logo are registered service marks used with permission. Each office is independently owned and operated. Equal Housing Opportunity.

Broker Participation Welcomed and Encouraged. ORAL REPRESENTATIONS CANNOT BE RELIED UPON AS CORRECTLY STATING REPRESENTATIONS OF THE SELLER. FOR CORRECT REPRESENTATIONS, MAKE REFERENCE TO THIS BROCHURE AND TO THE DOCUMENTS REQUIRED BY SECTION 718.503, FLORIDA STATUTES, TO BE FURNISHED BY A SELLER TO A BUYER OR LESSEE. This project has been filed in the state of Florida and no other state. This is not an offer to sell or solicitation of offers to buy the condominium units in states where such offer or solicitation cannot be made. Prices and availability are subject to change at any time without notice. All dimensions are approximate and all floorplans and development plans are subject to change. There are various methods for calculating the total square footage of a condominium unit, and depending on the method of calculation, the quoted square footage of a condominium unit may vary by more than a nominal amount. The total condominium unit square footages as shown in this brochure are based on the "Architectural Method" of measurement and the exterior perimeter measurements of the condominium unit, which include exterior walls, interior columns and fifty percent of demising walls. These square footage calculations are higher than the interior area space calculations for the condominium units. Please see the Declaration of Condominium for more information. Printed September 2024.

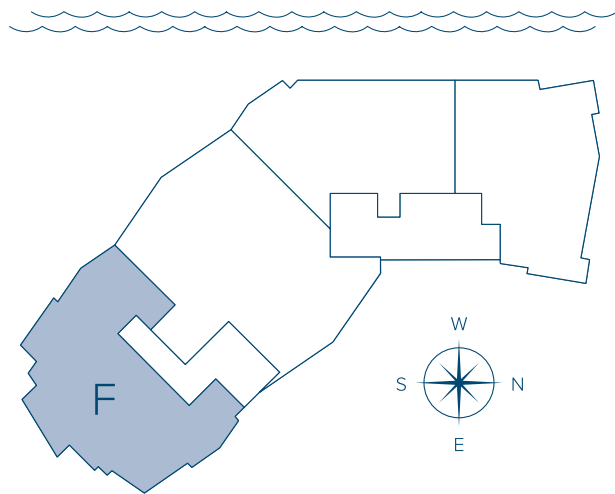
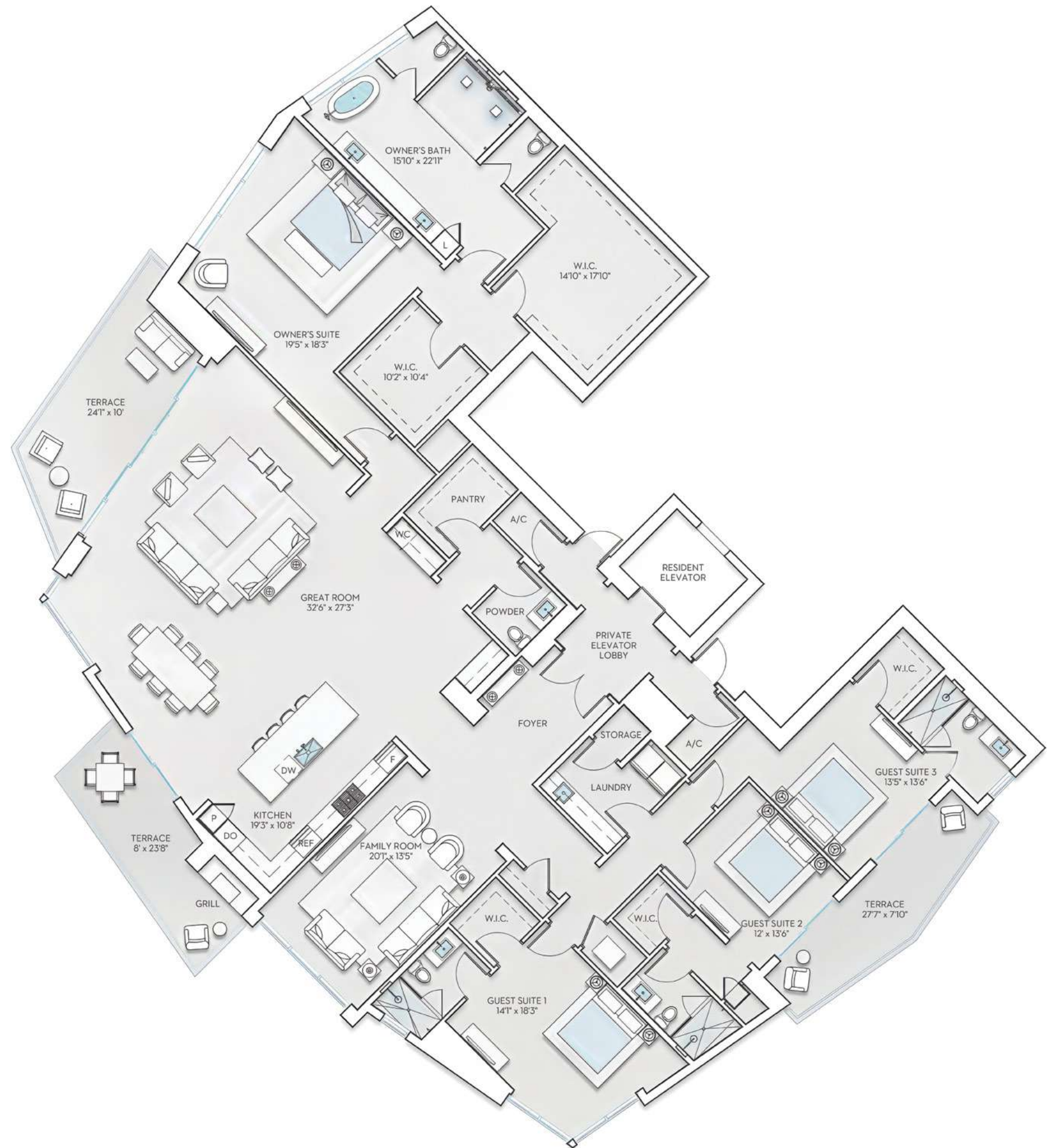


ESTATE F

4 Bedroom + Family Room | 4.5 Bathroom

LEVELS 17 – 19

INTERIOR	4,926 SF
EXTERIOR	598 SF
TOTAL	5,524 SF





THE RITZ - CARLTON RESIDENCES

SARASOTA BAY



THE RITZ - CARLTON RESIDENCES

SARASOTA BAY

ESTATE G

The Ritz-Carlton Residences, Sarasota Bay are not owned, developed or sold by Marriott International, Inc. or its affiliates ("Ritz-Carlton"). KT Sarasota South, LLC uses The Ritz-Carlton marks under a license from Ritz-Carlton, which has not confirmed the accuracy of any of the statements or representations made herein.

Broker Participation Welcomed and Encouraged. ORAL REPRESENTATIONS CANNOT BE RELIED UPON AS CORRECTLY STATING REPRESENTATIONS OF THE SELLER. FOR CORRECT REPRESENTATIONS, MAKE REFERENCE TO THIS BROCHURE AND TO THE DOCUMENTS REQUIRED BY SECTION 718.503, FLORIDA STATUTES, TO BE FURNISHED BY A SELLER TO A BUYER OR LESSEE. This project has been filed in the state of Florida and no other state. This is not an offer to sell or solicitation of offers to buy the condominium units in states where such offer or solicitation cannot be made. Prices and availability are subject to change at any time without notice.

All dimensions are approximate and all floorplans and development plans are subject to change. There are various methods for calculating the total square footage of a condominium unit, and depending on the method of calculation, the quoted square footage of a condominium unit may vary by more than a nominal amount. The total condominium unit square footages as shown in this brochure are based on the "Architectural Method" of measurement and the exterior perimeter measurements of the condominium unit, which include exterior walls, interior columns and fifty percent of demising walls. These square footage calculations are higher than the interior area space calculations for the condominium units. Please see the Declaration of Condominium for more information.



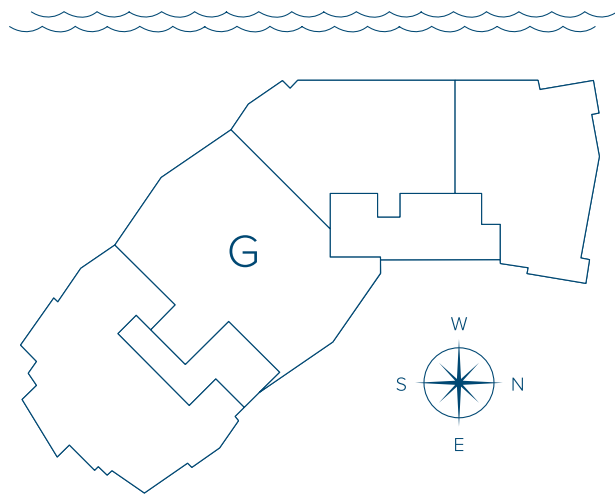
PRESENTED BY
KOLTER

ESTATE G

4 Bedroom + Family Room | 4.5 Bathroom

LEVELS 17 – 19

INTERIOR	5,816 SF
EXTERIOR	1,373 SF
TOTAL	7,189 SF





THE RITZ - CARLTON RESIDENCES

SARASOTA BAY



THE RITZ - CARLTON RESIDENCES

SARASOTA BAY

ESTATE H

The Ritz-Carlton Residences, Sarasota Bay are not owned, developed or sold by Marriott International, Inc. or its affiliates ("Ritz-Carlton"). KT Sarasota South, LLC uses The Ritz-Carlton marks under a license from Ritz-Carlton, which has not confirmed the accuracy of any of the statements or representations made herein.

Broker Participation Welcomed and Encouraged. ORAL REPRESENTATIONS CANNOT BE RELIED UPON AS CORRECTLY STATING REPRESENTATIONS OF THE SELLER. FOR CORRECT REPRESENTATIONS, MAKE REFERENCE TO THIS BROCHURE AND TO THE DOCUMENTS REQUIRED BY SECTION 718.503, FLORIDA STATUTES, TO BE FURNISHED BY A SELLER TO A BUYER OR LESSEE. This project has been filed in the state of Florida and no other state. This is not an offer to sell or solicitation of offers to buy the condominium units in states where such offer or solicitation cannot be made. Prices and availability are subject to change at any time without notice.

All dimensions are approximate and all floorplans and development plans are subject to change. There are various methods for calculating the total square footage of a condominium unit, and depending on the method of calculation, the quoted square footage of a condominium unit may vary by more than a nominal amount. The total condominium unit square footages as shown in this brochure are based on the "Architectural Method" of measurement and the exterior perimeter measurements of the condominium unit, which include exterior walls, interior columns and fifty percent of demising walls. These square footage calculations are higher than the interior area space calculations for the condominium units. Please see the Declaration of Condominium for more information.



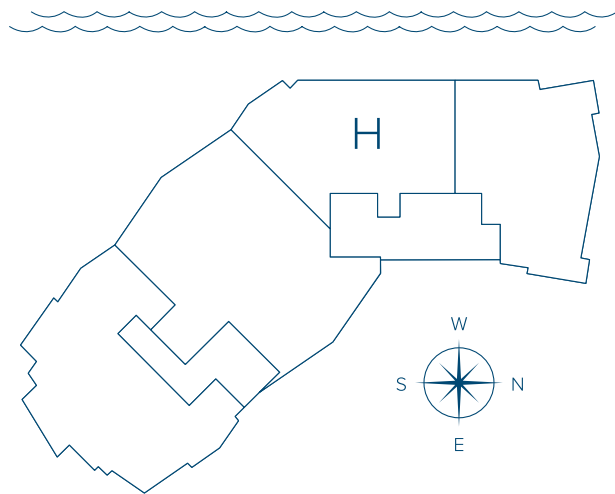
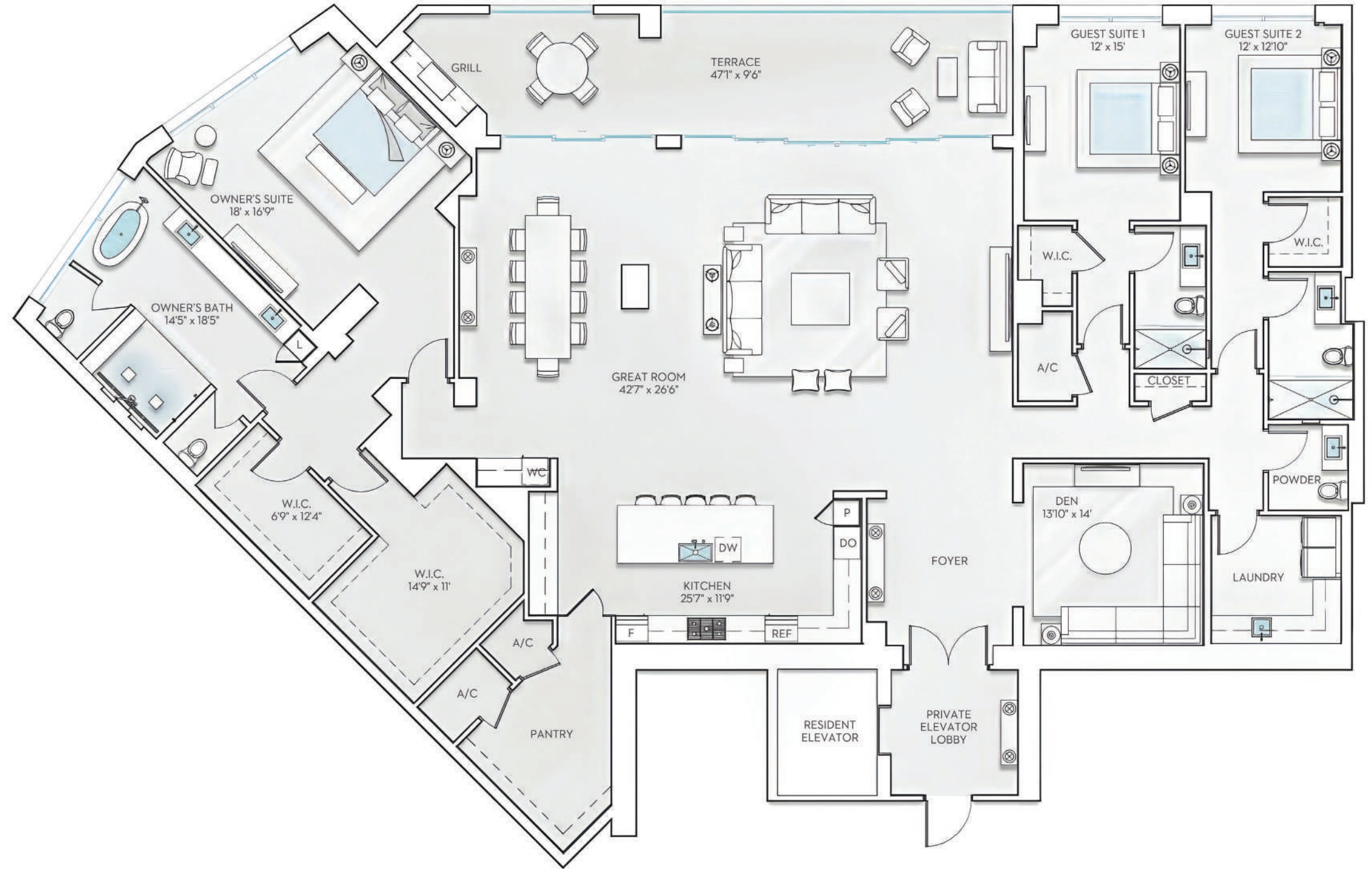
PRESENTED BY
KOLTER

ESTATE H

3 Bedroom + Den | 3.5 Bathroom

LEVELS 17 – 19

INTERIOR	4,360 SF
EXTERIOR	454 SF
TOTAL	4,814 SF





THE RITZ - CARLTON RESIDENCES

SARASOTA BAY



THE RITZ - CARLTON RESIDENCES

SARASOTA BAY

ESTATE J

The Ritz-Carlton Residences, Sarasota Bay are not owned, developed or sold by Marriott International, Inc. or its affiliates ("Ritz-Carlton"). KT Sarasota South, LLC uses The Ritz-Carlton marks under a license from Ritz-Carlton, which has not confirmed the accuracy of any of the statements or representations made herein.

Broker Participation Welcomed and Encouraged. ORAL REPRESENTATIONS CANNOT BE RELIED UPON AS CORRECTLY STATING REPRESENTATIONS OF THE SELLER. FOR CORRECT REPRESENTATIONS, MAKE REFERENCE TO THIS BROCHURE AND TO THE DOCUMENTS REQUIRED BY SECTION 718.503, FLORIDA STATUTES, TO BE FURNISHED BY A SELLER TO A BUYER OR LESSEE. This project has been filed in the state of Florida and no other state. This is not an offer to sell or solicitation of offers to buy the condominium units in states where such offer or solicitation cannot be made. Prices and availability are subject to change at any time without notice.

All dimensions are approximate and all floorplans and development plans are subject to change. There are various methods for calculating the total square footage of a condominium unit, and depending on the method of calculation, the quoted square footage of a condominium unit may vary by more than a nominal amount. The total condominium unit square footages as shown in this brochure are based on the "Architectural Method" of measurement and the exterior perimeter measurements of the condominium unit, which include exterior walls, interior columns and fifty percent of demising walls. These square footage calculations are higher than the interior area space calculations for the condominium units. Please see the Declaration of Condominium for more information.



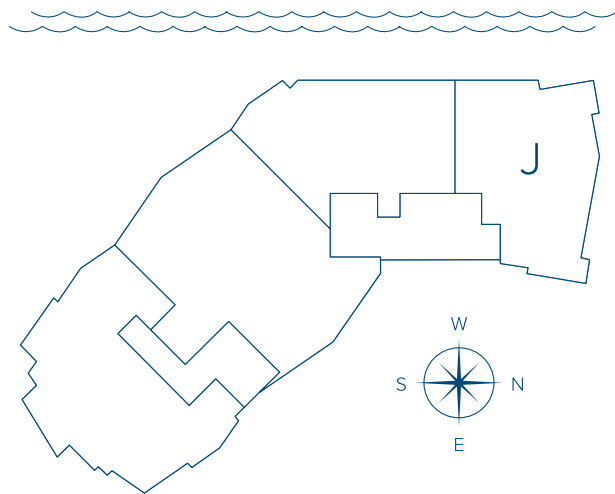
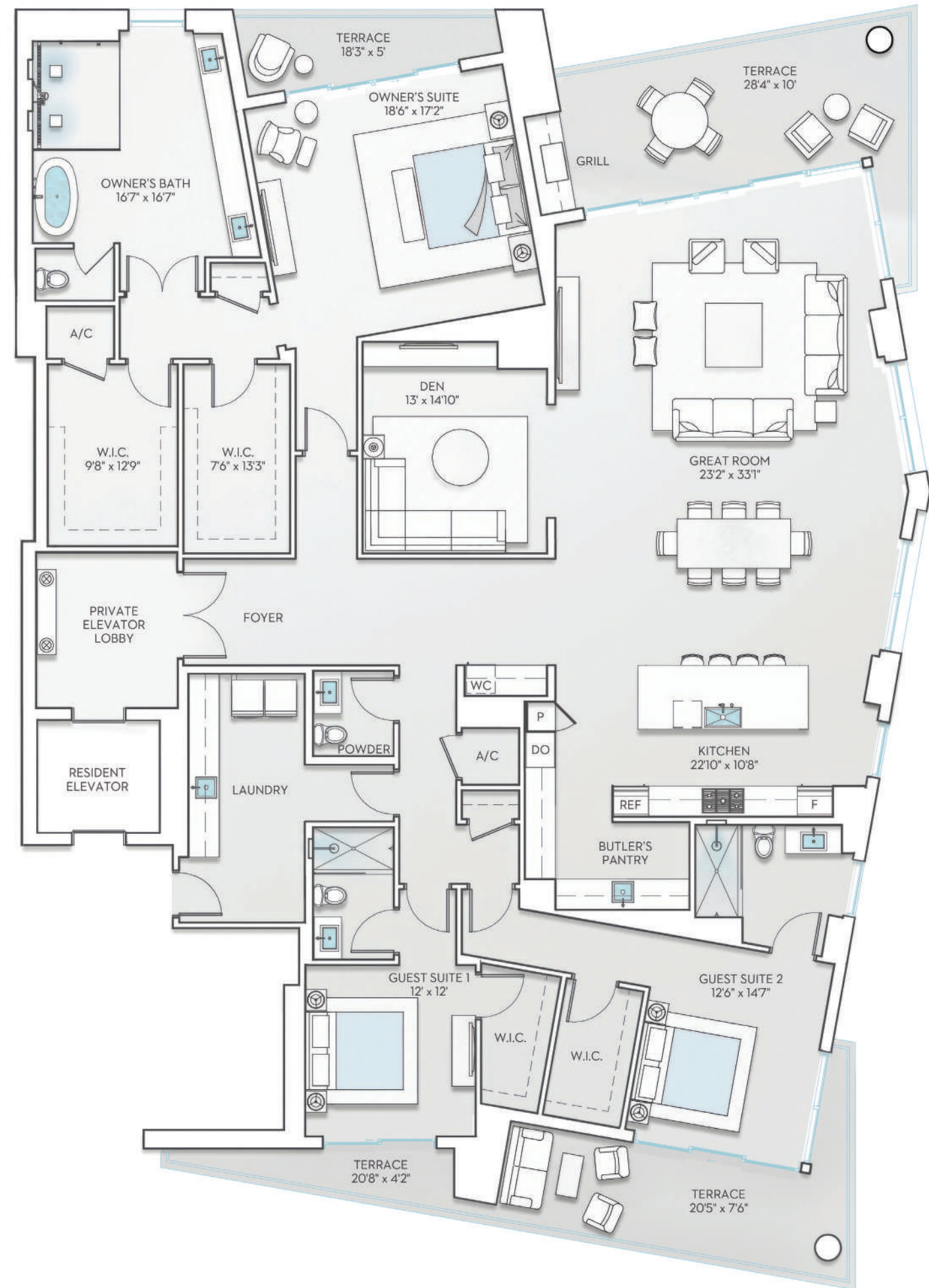
PRESENTED BY
KOLTER

ESTATE J

4 Bedroom + Den | 4.5 Bathroom

LEVELS 17 - 19

INTERIOR	4,001 SF
EXTERIOR	662 SF
TOTAL	4,663 SF





THE RITZ - CARLTON RESIDENCES

SARASOTA BAY



THE RITZ - CARLTON RESIDENCES

SARASOTA BAY

PLAZA 1

The Ritz-Carlton Residences, Sarasota Bay are not owned, developed or sold by Marriott International, Inc. or its affiliates ("Ritz-Carlton"). KT Sarasota South, LLC uses The Ritz-Carlton marks under a license from Ritz-Carlton, which has not confirmed the accuracy of any of the statements or representations made herein.

Broker Participation Welcomed and Encouraged. ORAL REPRESENTATIONS CANNOT BE RELIED UPON AS CORRECTLY STATING REPRESENTATIONS OF THE SELLER. FOR CORRECT REPRESENTATIONS, MAKE REFERENCE TO THIS BROCHURE AND TO THE DOCUMENTS REQUIRED BY SECTION 718.503, FLORIDA STATUTES, TO BE FURNISHED BY A SELLER TO A BUYER OR LESSEE. This project has been filed in the state of Florida and no other state. This is not an offer to sell or solicitation of offers to buy the condominium units in states where such offer or solicitation cannot be made. Prices and availability are subject to change at any time without notice.

All dimensions are approximate and all floorplans and development plans are subject to change. There are various methods for calculating the total square footage of a condominium unit, and depending on the method of calculation, the quoted square footage of a condominium unit may vary by more than a nominal amount. The total condominium unit square footages as shown in this brochure are based on the "Architectural Method" of measurement and the exterior perimeter measurements of the condominium unit, which include exterior walls, interior columns and fifty percent of demising walls. These square footage calculations are higher than the interior area space calculations for the condominium units. Please see the Declaration of Condominium for more information.

PRESENTED BY
KOLTER

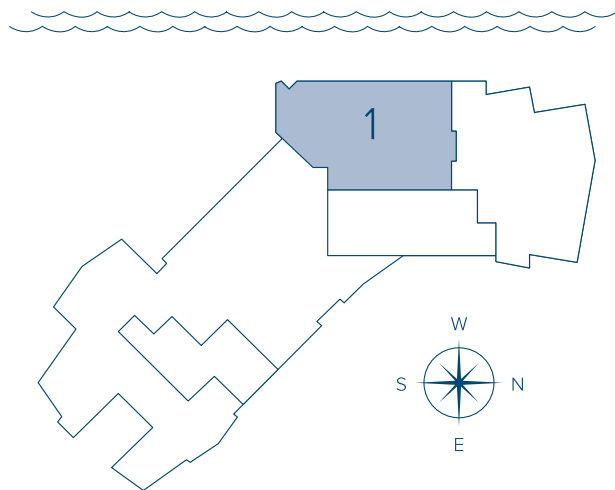
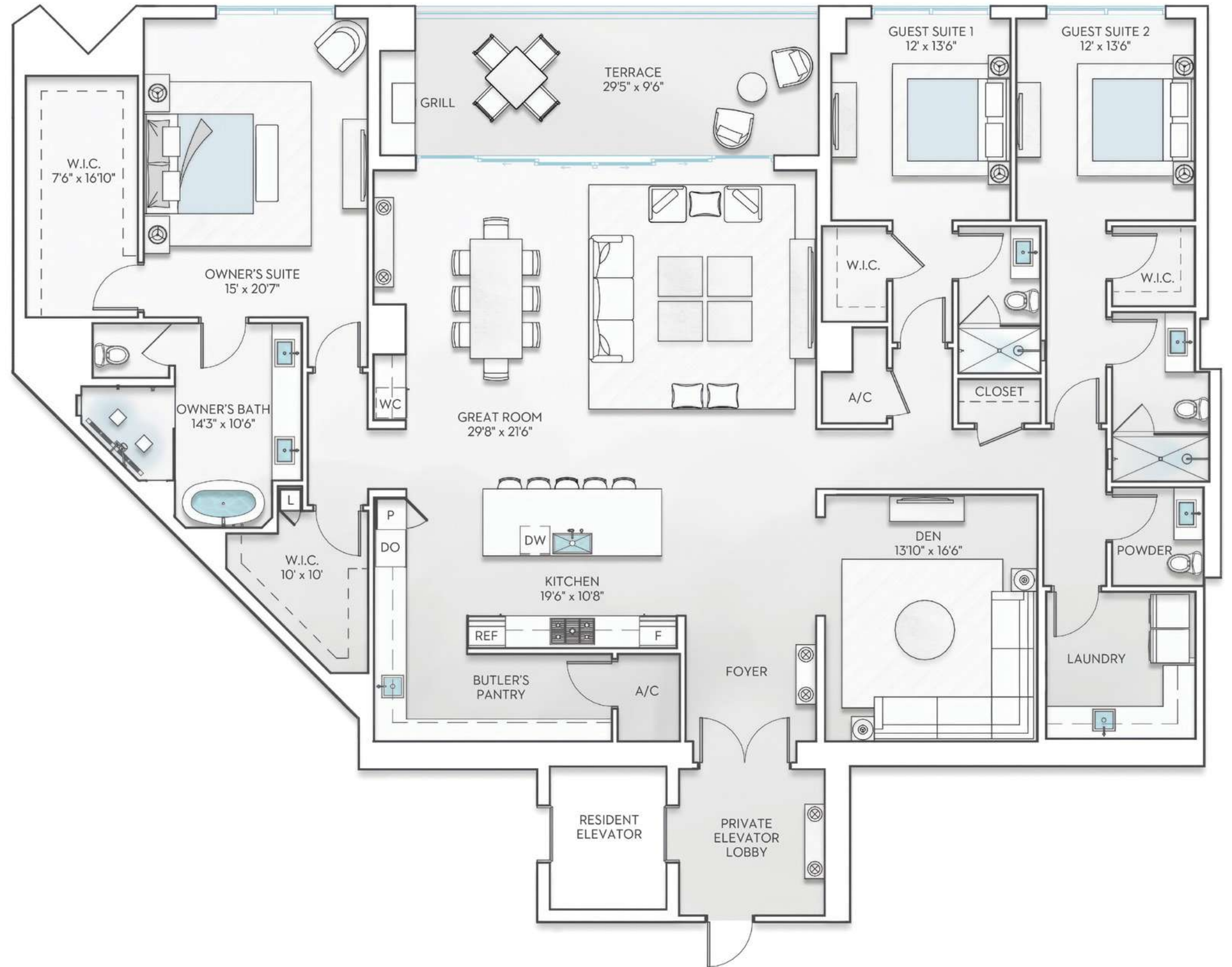


PLAZA 1

3 Bedroom + Den | 3.5 Bathroom

LEVEL 3

INTERIOR	3,487 SF
EXTERIOR	288 SF
TOTAL	3,775 SF





THE RITZ - CARLTON RESIDENCES

SARASOTA BAY



THE RITZ - CARLTON RESIDENCES

SARASOTA BAY

PLAZA 2

The Ritz-Carlton Residences, Sarasota Bay are not owned, developed or sold by Marriott International, Inc. or its affiliates ("Ritz-Carlton"). KT Sarasota South, LLC uses The Ritz-Carlton marks under a license from Ritz-Carlton, which has not confirmed the accuracy of any of the statements or representations made herein.

Broker Participation Welcomed and Encouraged. ORAL REPRESENTATIONS CANNOT BE RELIED UPON AS CORRECTLY STATING REPRESENTATIONS OF THE SELLER. FOR CORRECT REPRESENTATIONS, MAKE REFERENCE TO THIS BROCHURE AND TO THE DOCUMENTS REQUIRED BY SECTION 718.503, FLORIDA STATUTES, TO BE FURNISHED BY A SELLER TO A BUYER OR LESSEE. This project has been filed in the state of Florida and no other state. This is not an offer to sell or solicitation of offers to buy the condominium units in states where such offer or solicitation cannot be made. Prices and availability are subject to change at any time without notice.

All dimensions are approximate and all floorplans and development plans are subject to change. There are various methods for calculating the total square footage of a condominium unit, and depending on the method of calculation, the quoted square footage of a condominium unit may vary by more than a nominal amount. The total condominium unit square footages as shown in this brochure are based on the "Architectural Method" of measurement and the exterior perimeter measurements of the condominium unit, which include exterior walls, interior columns and fifty percent of demising walls. These square footage calculations are higher than the interior area space calculations for the condominium units. Please see the Declaration of Condominium for more information.

PRESENTED BY
KOLTER



PLAZA 2

3 Bedroom + Den | 3.5 Bathroom

LEVEL 3

INTERIOR	3,929 SF
EXTERIOR	1,425 SF
TOTAL	5,354 SF

