

RESIDENCE 2 SOUTH

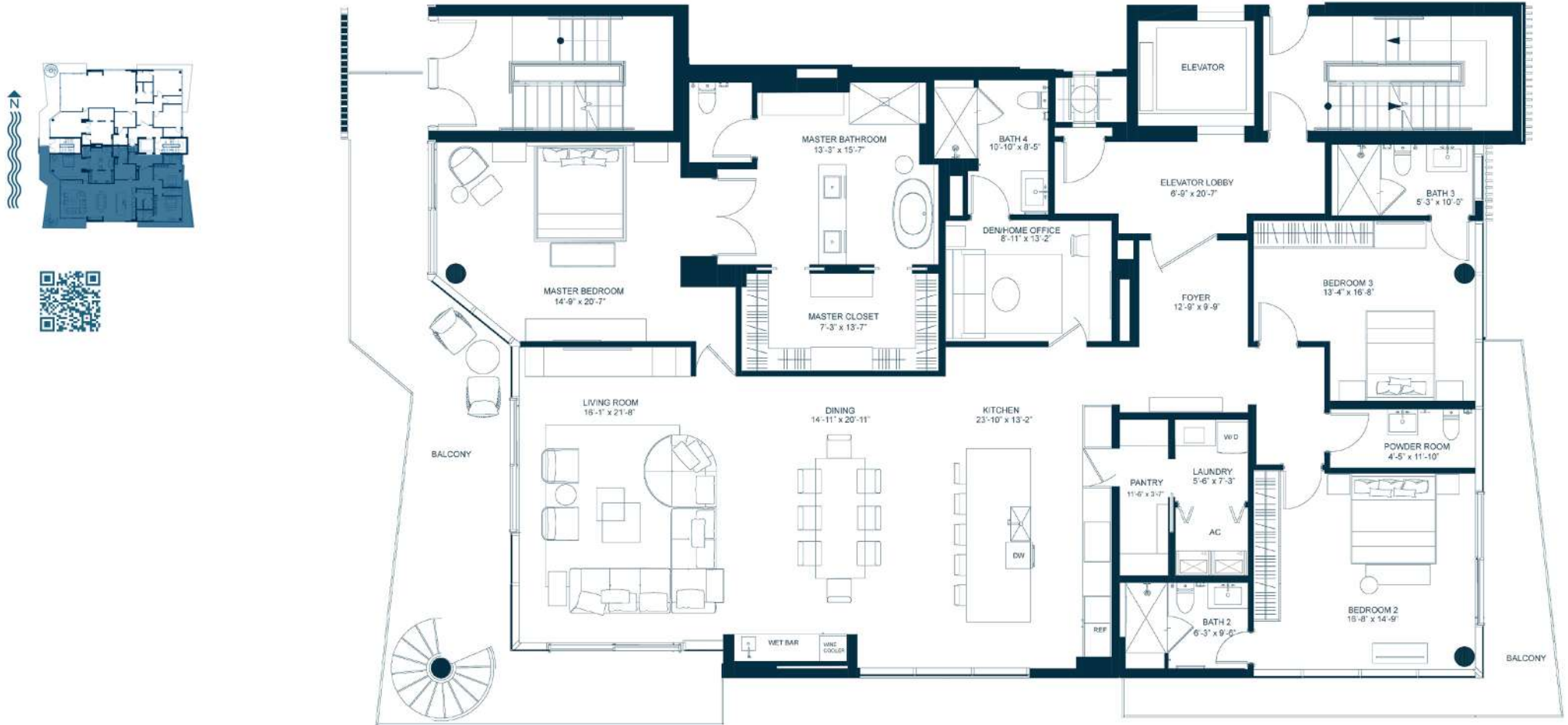
3 BEDROOMS + DEN | 4.5 BATHROOMS

INTERIOR LIVING AREA: 3,108 SQ.FT.

EXTERIOR LIVING AREA: 692 SQ. FT. + ROOFTOP

CASA MURANO

141 ISLE OF VENICE - FORT LAUDERDALE



141 ISLE OF VENICE DRIVE, FORT LAUDERDALE, FL 33301 | WWW.CASAMURANOLASOLAS.COM

DISCLAIMER
 STATED 'AC LIVING AREA' IS MEASURED TO THE EXTERIOR BOUNDARIES OF THE EXTERIOR WALLS AND THE CENTERLINE OF INTERIOR DEMISING WALLS AND IN FACT VARIES FROM THE SQUARE FOOTAGE AND DIMENSIONS THAT WOULD BE DETERMINED BY USING THE DESCRIPTION AND DEFINITION OF THE "UNIT" SET FORTH IN THE DECLARATION (WHICH GENERALLY ONLY INCLUDES THE INTERIOR AIRSPACE BETWEEN THE PERIMETER WALLS AND EXCLUDES ALL INTERIOR STRUCTURAL COMPONENTS AND OTHER COMMON ELEMENTS). THIS METHOD IS GENERALLY USED IN SALES MATERIALS AND IS PROVIDED TO ALLOW A PROSPECTIVE BUYER TO COMPARE THE UNITS WITH UNITS IN OTHER CONDOMINIUM PROJECTS THAT UTILIZE THE SAME METHOD. THE AC LIVING AREA OF EACH UNIT TYPE, CALCULATED IN ACCORDANCE WITH THE DEFINITION SET FORTH IN THE CONDOMINIUM DECLARATION, WOULD BE: 3,131 SQ. FT. AS TO UNIT 2 NORTH, 3,108 SQ. FT. AS TO UNIT 2 SOUTH, 3,131 SQ. FT. AS TO UNIT 3 NORTH, 3,108 SQ. FT. AS TO UNIT 3 SOUTH, 3,131 SQ. FT. AS TO UNIT 4 NORTH, 3,108 SQ. FT. AS TO UNIT 4 SOUTH, 3,131 SQ. FT. AS TO UNIT PH NORTH, AND 3,108 SQ. FT. AS TO UNIT PH SOUTH. ALL DIMENSIONS ARE ESTIMATES WHICH WILL VARY WITH ACTUAL CONSTRUCTION, AND ALL FLOOR PLANS, SPECIFICATIONS AND OTHER DEVELOPMENT PLANS ARE SUBJECT TO CHANGE AND WILL NOT NECESSARILY ACCURATELY REFLECT THE FINAL PLANS AND SPECIFICATIONS FOR THE DEVELOPMENT. ALL DEPICTIONS OF FURNITURE, APPLIANCES, COUNTERTOPS, SOFFITS, FLOOR COVERINGS AND OTHER MATTERS OF DETAIL, INCLUDING, WITHOUT LIMITATION, ITEMS OF FINISH AND DECORATION, ARE CONCEPTUAL ONLY AND ARE NOT NECESSARILY INCLUDED IN EACH UNIT. SAID ITEMS ARE ONLY INCLUDED IF AND TO THE EXTENT PROVIDED IN YOUR PURCHASE AGREEMENT. PLEASE NOTE THAT THE AREAS LISTED ABOVE INCLUDE THE PROPOSED SQUARE FOOTAGE OF TERRACES AND ROOF DECKS. NOTE THAT THOSE COMPONENTS ARE NOT PART OF THE UNIT, BUT RATHER ARE APPURTENANCES AS TO WHICH PURCHASERS MAY BE ASSIGNED EXCLUSIVE USE. THE BALCONY DIMENSIONS VARY AND THE AREA STATED RELATES TO THE LARGEST BALCONY AND/OR THE COMBINATION OF ONE (1) OR MORE BALCONIES ADJACENT TO A UNIT. THE ACTUAL BALCONY(IES) MAY BE SMALLER. SEE THE DECLARATION FOR THE SPECIFIC DIMENSIONS OF ANY TERRACE APPURTENANT TO A PARTICULAR UNIT. DIMENSIONS OF TERRACES AND ROOF DECKS MAY NOT BE AS STATED.

RESIDENCE 2 NORTH

3 BEDROOMS + DEN | 4.5 BATHROOMS

INTERIOR LIVING AREA: 3,131 SQ.FT.

EXTERIOR LIVING AREA: 692 SQ. FT. + ROOFTOP

CASA MURANO

141 ISLE OF VENICE - FORT LAUDERDALE



141 ISLE OF VENICE DRIVE, FORT LAUDERDALE, FL 33301 | WWW.CASAMURANOLASOLAS.COM

DISCLAIMER
 STATED "AC LIVING AREA" IS MEASURED TO THE EXTERIOR BOUNDARIES OF THE EXTERIOR WALLS AND THE CENTERLINE OF INTERIOR DEMISING WALLS AND IN FACT VARIES FROM THE SQUARE FOOTAGE AND DIMENSIONS THAT WOULD BE DETERMINED BY USING THE DESCRIPTION AND DEFINITION OF THE "UNIT" SET FORTH IN THE DECLARATION (WHICH GENERALLY ONLY INCLUDES THE INTERIOR AIRSPACE BETWEEN THE PERIMETER WALLS AND EXCLUDES ALL INTERIOR STRUCTURAL COMPONENTS AND OTHER COMMON ELEMENTS). THIS METHOD IS GENERALLY USED IN SALES MATERIALS AND IS PROVIDED TO ALLOW A PROSPECTIVE BUYER TO COMPARE THE UNITS WITH UNITS IN OTHER CONDOMINIUM PROJECTS THAT UTILIZE THE SAME METHOD. THE AC LIVING AREA OF EACH UNIT TYPE, CALCULATED IN ACCORDANCE WITH THE DEFINITION SET FORTH IN THE CONDOMINIUM DECLARATION, WOULD BE: 3,131 SQ. FT. AS TO UNIT 2 NORTH, 3,108 SQ. FT. AS TO UNIT 2 SOUTH, 3,131 SQ. FT. AS TO UNIT 3 NORTH, 3,108 SQ. FT. AS TO UNIT 3 SOUTH, 3,131 SQ. FT. AS TO UNIT 4 NORTH, 3,108 SQ. FT. AS TO UNIT 4 SOUTH, 3,131 SQ. FT. AS TO UNIT PH NORTH, AND 3,108 SQ. FT. AS TO UNIT PH SOUTH. ALL DIMENSIONS ARE ESTIMATES WHICH WILL VARY WITH ACTUAL CONSTRUCTION, AND ALL FLOOR PLANS, SPECIFICATIONS AND OTHER DEVELOPMENT PLANS ARE SUBJECT TO CHANGE AND WILL NOT NECESSARILY ACCURATELY REFLECT THE FINAL PLANS AND SPECIFICATIONS FOR THE DEVELOPMENT. ALL DEPICTIONS OF FURNITURE, APPLIANCES, COUNTERS, SOFFITS, FLOOR COVERINGS AND OTHER MATTERS OF DETAIL, INCLUDING, WITHOUT LIMITATION, ITEMS OF FINISH AND DECORATION, ARE CONCEPTUAL ONLY AND ARE NOT NECESSARILY INCLUDED IN EACH UNIT. SAID ITEMS ARE ONLY INCLUDED IF AND TO THE EXTENT PROVIDED IN YOUR PURCHASE AGREEMENT. PLEASE NOTE THAT THE AREAS LISTED ABOVE INCLUDE THE PROPOSED SQUARE FOOTAGE OF TERRACES AND ROOF DECKS. NOTE THAT THOSE COMPONENTS ARE NOT PART OF THE UNIT, BUT RATHER ARE APPURTENANCES AS TO WHICH PURCHASERS MAY BE ASSIGNED EXCLUSIVE USE. THE BALCONY DIMENSIONS VARY AND THE AREA STATED RELATES TO THE LARGEST BALCONY AND/OR THE COMBINATION OF ONE (1) OR MORE BALCONIES ADJACENT TO A UNIT. THE ACTUAL BALCONY(IES) MAY BE SMALLER. SEE THE DECLARATION FOR THE SPECIFIC DIMENSIONS OF ANY TERRACE APPURTENANT TO A PARTICULAR UNIT. DIMENSIONS OF TERRACES AND ROOF DECKS MAY NOT BE AS STATED.

RESIDENCE 3 SOUTH

3 BEDROOMS + DEN | 4.5 BATHROOMS

INTERIOR LIVING AREA: 3,108 SQ.FT.

EXTERIOR LIVING AREA: 692 SQ. FT. + ROOFTOP

CASA MURANO

141 ISLE OF VENICE - FORT LAUDERDALE



141 ISLE OF VENICE DRIVE, FORT LAUDERDALE, FL 33301 | WWW.CASAMURANOLASOLAS.COM

DISCLAIMER
 STATED 'AC LIVING AREA' IS MEASURED TO THE EXTERIOR BOUNDARIES OF THE EXTERIOR WALLS AND THE CENTERLINE OF INTERIOR DEMISING WALLS AND IN FACT VARIES FROM THE SQUARE FOOTAGE AND DIMENSIONS THAT WOULD BE DETERMINED BY USING THE DESCRIPTION AND DEFINITION OF THE "UNIT" SET FORTH IN THE DECLARATION (WHICH GENERALLY ONLY INCLUDES THE INTERIOR AIRSPACE BETWEEN THE PERIMETER WALLS AND EXCLUDES ALL INTERIOR STRUCTURAL COMPONENTS AND OTHER COMMON ELEMENTS). THIS METHOD IS GENERALLY USED IN SALES MATERIALS AND IS PROVIDED TO ALLOW A PROSPECTIVE BUYER TO COMPARE THE UNITS WITH UNITS IN OTHER CONDOMINIUM PROJECTS THAT UTILIZE THE SAME METHOD. THE AC LIVING AREA OF EACH UNIT TYPE, CALCULATED IN ACCORDANCE WITH THE DEFINITION SET FORTH IN THE CONDOMINIUM DECLARATION, WOULD BE: 3,131 SQ. FT. AS TO UNIT 2 NORTH, 3,108 SQ. FT. AS TO UNIT 2 SOUTH, 3,131 SQ. FT. AS TO UNIT 3 NORTH, 3,108 SQ. FT. AS TO UNIT 3 SOUTH, 3,131 SQ. FT. AS TO UNIT 4 NORTH, 3,108 SQ. FT. AS TO UNIT 4 SOUTH, 3,131 SQ. FT. AS TO UNIT PH NORTH, AND 3,108 SQ. FT. AS TO UNIT PH SOUTH. ALL DIMENSIONS ARE ESTIMATES WHICH WILL VARY WITH ACTUAL CONSTRUCTION, AND ALL FLOOR PLANS, SPECIFICATIONS AND OTHER DEVELOPMENT PLANS ARE SUBJECT TO CHANGE AND WILL NOT NECESSARILY ACCURATELY REFLECT THE FINAL PLANS AND SPECIFICATIONS FOR THE DEVELOPMENT. ALL DEPICTIONS OF FURNITURE, APPLIANCES, COUNTERS, SOFFITS, FLOOR COVERINGS AND OTHER MATTERS OF DETAIL, INCLUDING, WITHOUT LIMITATION, ITEMS OF FINISH AND DECORATION, ARE CONCEPTUAL ONLY AND ARE NOT NECESSARILY INCLUDED IN EACH UNIT. SAID ITEMS ARE ONLY INCLUDED IF AND TO THE EXTENT PROVIDED IN YOUR PURCHASE AGREEMENT. PLEASE NOTE THAT THE AREAS LISTED ABOVE INCLUDE THE PROPOSED SQUARE FOOTAGE OF TERRACES AND ROOF DECKS. NOTE THAT THOSE COMPONENTS ARE NOT PART OF THE UNIT, BUT RATHER ARE APPURTENANCES AS TO WHICH PURCHASERS MAY BE ASSIGNED EXCLUSIVE USE. THE BALCONY DIMENSIONS VARY AND THE AREA STATED RELATES TO THE LARGEST BALCONY AND/OR THE COMBINATION OF ONE (1) OR MORE BALCONIES ADJACENT TO A UNIT. THE ACTUAL BALCONY(IES) MAY BE SMALLER. SEE THE DECLARATION FOR THE SPECIFIC DIMENSIONS OF ANY TERRACE APPURTENANT TO A PARTICULAR UNIT. DIMENSIONS OF TERRACES AND ROOF DECKS MAY NOT BE AS STATED.

RESIDENCE 3 NORTH

3 BEDROOMS + DEN | 4.5 BATHROOMS

INTERIOR LIVING AREA: 3,131 SQ.FT.

EXTERIOR LIVING AREA: 692 SQ. FT. + ROOFTOP

CASA MURANO

141 ISLE OF VENICE - FORT LAUDERDALE



141 ISLE OF VENICE DRIVE, FORT LAUDERDALE, FL 33301 | WWW.CASAMURANOLASOLAS.COM

DISCLAIMER
 STATED "AC LIVING AREA" IS MEASURED TO THE EXTERIOR BOUNDARIES OF THE EXTERIOR WALLS AND THE CENTERLINE OF INTERIOR DEMISING WALLS AND IN FACT VARIES FROM THE SQUARE FOOTAGE AND DIMENSIONS THAT WOULD BE DETERMINED BY USING THE DESCRIPTION AND DEFINITION OF THE "UNIT" SET FORTH IN THE DECLARATION (WHICH GENERALLY ONLY INCLUDES THE INTERIOR AIRSPACE BETWEEN THE PERIMETER WALLS AND EXCLUDES ALL INTERIOR STRUCTURAL COMPONENTS AND OTHER COMMON ELEMENTS). THIS METHOD IS GENERALLY USED IN SALES MATERIALS AND IS PROVIDED TO ALLOW A PROSPECTIVE BUYER TO COMPARE THE UNITS WITH UNITS IN OTHER CONDOMINIUM PROJECTS THAT UTILIZE THE SAME METHOD. THE AC LIVING AREA OF EACH UNIT TYPE, CALCULATED IN ACCORDANCE WITH THE DEFINITION SET FORTH IN THE CONDOMINIUM DECLARATION, WOULD BE: 3,131 SQ. FT. AS TO UNIT 2 NORTH, 3,108 SQ. FT. AS TO UNIT 2 SOUTH, 3,131 SQ. FT. AS TO UNIT 3 NORTH, 3,108 SQ. FT. AS TO UNIT 3 SOUTH, 3,131 SQ. FT. AS TO UNIT 4 NORTH, 3,108 SQ. FT. AS TO UNIT 4 SOUTH, 3,131 SQ. FT. AS TO UNIT PH NORTH, AND 3,108 SQ. FT. AS TO UNIT PH SOUTH. ALL DIMENSIONS ARE ESTIMATES WHICH WILL VARY WITH ACTUAL CONSTRUCTION, AND ALL FLOOR PLANS, SPECIFICATIONS AND OTHER DEVELOPMENT PLANS ARE SUBJECT TO CHANGE AND WILL NOT NECESSARILY ACCURATELY REFLECT THE FINAL PLANS AND SPECIFICATIONS FOR THE DEVELOPMENT. ALL DEPICTIONS OF FURNITURE, APPLIANCES, COUNTERS, SOFFITS, FLOOR COVERINGS AND OTHER MATTERS OF DETAIL, INCLUDING, WITHOUT LIMITATION, ITEMS OF FINISH AND DECORATION, ARE CONCEPTUAL ONLY AND ARE NOT NECESSARILY INCLUDED IN EACH UNIT. SAID ITEMS ARE ONLY INCLUDED IF AND TO THE EXTENT PROVIDED IN YOUR PURCHASE AGREEMENT. PLEASE NOTE THAT THE AREAS LISTED ABOVE INCLUDE THE PROPOSED SQUARE FOOTAGE OF TERRACES AND ROOF DECKS. NOTE THAT THOSE COMPONENTS ARE NOT PART OF THE UNIT, BUT RATHER ARE APPURTENANCES AS TO WHICH PURCHASERS MAY BE ASSIGNED EXCLUSIVE USE. THE BALCONY DIMENSIONS VARY AND THE AREA STATED RELATES TO THE LARGEST BALCONY AND/OR THE COMBINATION OF ONE (1) OR MORE BALCONY(IES) MAY BE SMALLER. SEE THE DECLARATION FOR THE SPECIFIC DIMENSIONS OF ANY TERRACE APPURTENANT TO A PARTICULAR UNIT. DIMENSIONS OF TERRACES AND ROOF DECKS MAY NOT BE AS STATED.

RESIDENCE 4 SOUTH

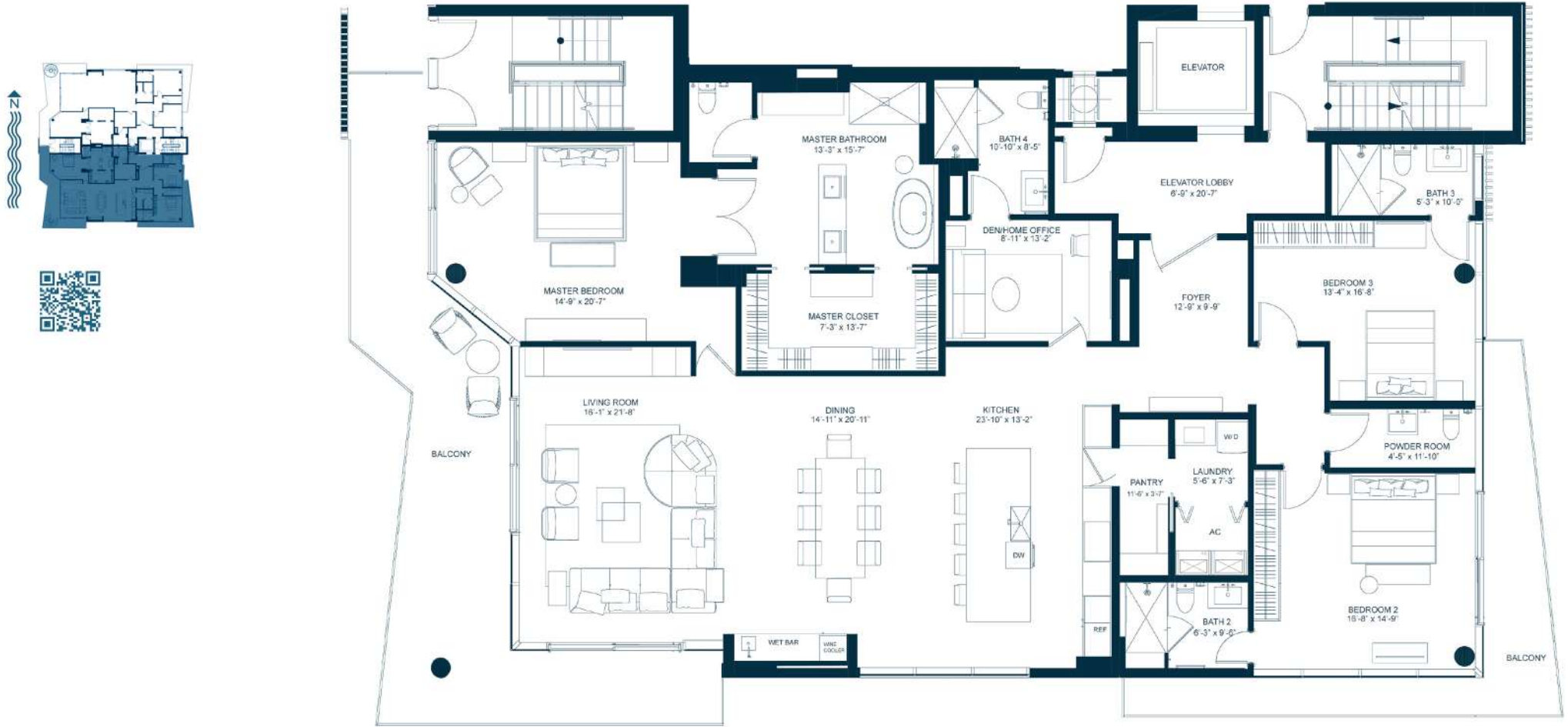
3 BEDROOMS + DEN | 4.5 BATHROOMS

INTERIOR LIVING AREA: 3,108 SQ.FT.

EXTERIOR LIVING AREA: 692 SQ. FT. + ROOFTOP

CASA MURANO

141 ISLE OF VENICE - FORT LAUDERDALE



141 ISLE OF VENICE DRIVE, FORT LAUDERDALE, FL 33301 | WWW.CASAMURANOLASOLAS.COM

DISCLAIMER
 STATED 'AC LIVING AREA' IS MEASURED TO THE EXTERIOR BOUNDARIES OF THE EXTERIOR WALLS AND THE CENTERLINE OF INTERIOR DEMISING WALLS AND IN FACT VARIES FROM THE SQUARE FOOTAGE AND DIMENSIONS THAT WOULD BE DETERMINED BY USING THE DESCRIPTION AND DEFINITION OF THE "UNIT" SET FORTH IN THE DECLARATION (WHICH GENERALLY ONLY INCLUDES THE INTERIOR AIRSPACE BETWEEN THE PERIMETER WALLS AND EXCLUDES ALL INTERIOR STRUCTURAL COMPONENTS AND OTHER COMMON ELEMENTS). THIS METHOD IS GENERALLY USED IN SALES MATERIALS AND IS PROVIDED TO ALLOW A PROSPECTIVE BUYER TO COMPARE THE UNITS WITH UNITS IN OTHER CONDOMINIUM PROJECTS THAT UTILIZE THE SAME METHOD. THE AC LIVING AREA OF EACH UNIT TYPE, CALCULATED IN ACCORDANCE WITH THE DEFINITION SET FORTH IN THE CONDOMINIUM DECLARATION, WOULD BE: 3,131 SQ. FT. AS TO UNIT 2 NORTH, 3,108 SQ. FT. AS TO UNIT 2 SOUTH, 3,131 SQ. FT. AS TO UNIT 3 NORTH, 3,108 SQ. FT. AS TO UNIT 3 SOUTH, 3,131 SQ. FT. AS TO UNIT 4 NORTH, 3,108 SQ. FT. AS TO UNIT 4 SOUTH, 3,131 SQ. FT. AS TO UNIT PH NORTH, AND 3,108 SQ. FT. AS TO UNIT PH SOUTH. ALL DIMENSIONS ARE ESTIMATES WHICH WILL VARY WITH ACTUAL CONSTRUCTION, AND ALL FLOOR PLANS, SPECIFICATIONS AND OTHER DEVELOPMENT PLANS ARE SUBJECT TO CHANGE AND WILL NOT NECESSARILY ACCURATELY REFLECT THE FINAL PLANS AND SPECIFICATIONS FOR THE DEVELOPMENT. ALL DEPICTIONS OF FURNITURE, APPLIANCES, COUNTERS, SOFFITS, FLOOR COVERINGS AND OTHER MATTERS OF DETAIL, INCLUDING, WITHOUT LIMITATION, ITEMS OF FINISH AND DECORATION, ARE CONCEPTUAL ONLY AND ARE NOT NECESSARILY INCLUDED IN EACH UNIT. SAID ITEMS ARE ONLY INCLUDED IF AND TO THE EXTENT PROVIDED IN YOUR PURCHASE AGREEMENT. PLEASE NOTE THAT THE AREAS LISTED ABOVE INCLUDE THE PROPOSED SQUARE FOOTAGE OF TERRACES AND ROOF DECKS. NOTE THAT THOSE COMPONENTS ARE NOT PART OF THE UNIT, BUT RATHER ARE APPURTENANCES AS TO WHICH PURCHASERS MAY BE ASSIGNED EXCLUSIVE USE. THE BALCONY DIMENSIONS VARY AND THE AREA STATED RELATES TO THE LARGEST BALCONY AND/OR THE COMBINATION OF ONE (1) OR MORE BALCONIES ADJACENT TO A UNIT. THE ACTUAL BALCONY(IES) MAY BE SMALLER. SEE THE DECLARATION FOR THE SPECIFIC DIMENSIONS OF ANY TERRACE APPURTENANT TO A PARTICULAR UNIT. DIMENSIONS OF TERRACES AND ROOF DECKS MAY NOT BE AS STATED.

RESIDENCE 4 NORTH

3 BEDROOMS + DEN | 4.5 BATHROOMS

INTERIOR LIVING AREA: 3,131 SQ.FT.

EXTERIOR LIVING AREA: 692 SQ. FT. + ROOFTOP

CASA MURANO

141 ISLE OF VENICE - FORT LAUDERDALE



141 ISLE OF VENICE DRIVE, FORT LAUDERDALE, FL 33301 | WWW.CASAMURANOLASOLAS.COM

DISCLAIMER
 STATED "AC LIVING AREA" IS MEASURED TO THE EXTERIOR BOUNDARIES OF THE EXTERIOR WALLS AND THE CENTERLINE OF INTERIOR DEMISING WALLS AND IN FACT VARIES FROM THE SQUARE FOOTAGE AND DIMENSIONS THAT WOULD BE DETERMINED BY USING THE DESCRIPTION AND DEFINITION OF THE "UNIT" SET FORTH IN THE DECLARATION (WHICH GENERALLY ONLY INCLUDES THE INTERIOR AIRSPACE BETWEEN THE PERIMETER WALLS AND EXCLUDES ALL INTERIOR STRUCTURAL COMPONENTS AND OTHER COMMON ELEMENTS). THIS METHOD IS GENERALLY USED IN SALES MATERIALS AND IS PROVIDED TO ALLOW A PROSPECTIVE BUYER TO COMPARE THE UNITS WITH UNITS IN OTHER CONDOMINIUM PROJECTS THAT UTILIZE THE SAME METHOD. THE AC LIVING AREA OF EACH UNIT TYPE, CALCULATED IN ACCORDANCE WITH THE DEFINITION SET FORTH IN THE CONDOMINIUM DECLARATION, WOULD BE: 3,131 SQ. FT. AS TO UNIT 2 NORTH, 3,108 SQ. FT. AS TO UNIT 2 SOUTH, 3,131 SQ. FT. AS TO UNIT 3 NORTH, 3,108 SQ. FT. AS TO UNIT 3 SOUTH, 3,131 SQ. FT. AS TO UNIT 4 NORTH, 3,108 SQ. FT. AS TO UNIT 4 SOUTH, 3,131 SQ. FT. AS TO UNIT PH NORTH, AND 3,108 SQ. FT. AS TO UNIT PH SOUTH. ALL DIMENSIONS ARE ESTIMATES WHICH WILL VARY WITH ACTUAL CONSTRUCTION, AND ALL FLOOR PLANS, SPECIFICATIONS AND OTHER DEVELOPMENT PLANS ARE SUBJECT TO CHANGE AND WILL NOT NECESSARILY ACCURATELY REFLECT THE FINAL PLANS AND SPECIFICATIONS FOR THE DEVELOPMENT. ALL DEPICTIONS OF FURNITURE, APPLIANCES, COUNTERS, SOFFITS, FLOOR COVERINGS AND OTHER MATTERS OF DETAIL, INCLUDING, WITHOUT LIMITATION, ITEMS OF FINISH AND DECORATION, ARE CONCEPTUAL ONLY AND ARE NOT NECESSARILY INCLUDED IN EACH UNIT. SAID ITEMS ARE ONLY INCLUDED IF AND TO THE EXTENT PROVIDED IN YOUR PURCHASE AGREEMENT. PLEASE NOTE THAT THE AREAS LISTED ABOVE INCLUDE THE PROPOSED SQUARE FOOTAGE OF TERRACES AND ROOF DECKS. NOTE THAT THOSE COMPONENTS ARE NOT PART OF THE UNIT, BUT RATHER ARE APPURTENANCES AS TO WHICH PURCHASERS MAY BE ASSIGNED EXCLUSIVE USE. THE BALCONY DIMENSIONS VARY AND THE AREA STATED RELATES TO THE LARGEST BALCONY AND/OR THE COMBINATION OF ONE (1) OR MORE BALCONY(IES) MAY BE SMALLER. SEE THE DECLARATION FOR THE SPECIFIC DIMENSIONS OF ANY TERRACE APPURTENANT TO A PARTICULAR UNIT. DIMENSIONS OF TERRACES AND ROOF DECKS MAY NOT BE AS STATED.

PENTHOUSE SOUTH

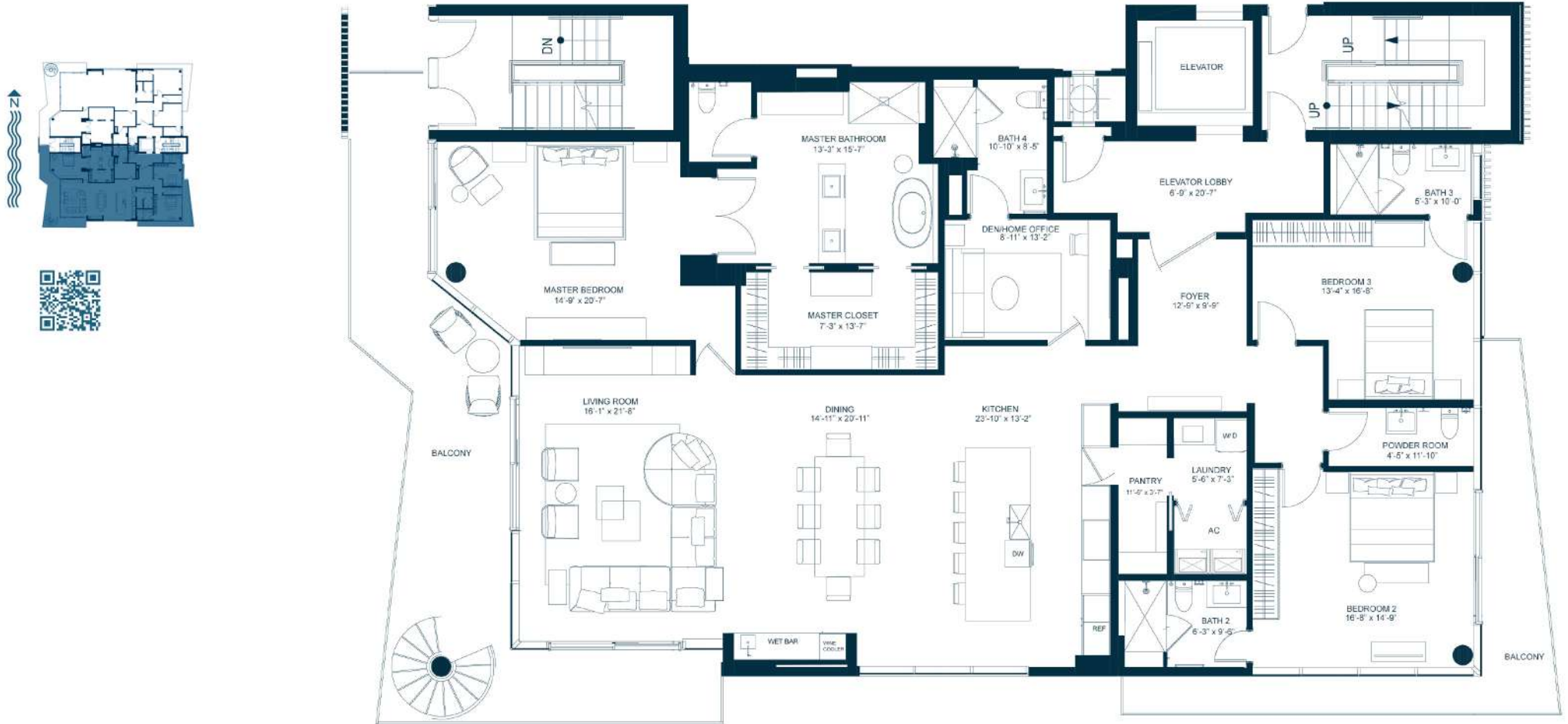
3 BEDROOMS + DEN | 4.5 BATHROOMS

INTERIOR LIVING AREA: 3,108 SQ.FT.

EXTERIOR LIVING AREA: 692 SQ. FT. + ROOFTOP

CASA MURANO

141 ISLE OF VENICE - FORT LAUDERDALE



141 ISLE OF VENICE DRIVE, FORT LAUDERDALE, FL 33301 | WWW.CASAMURANOLASOLAS.COM

DISCLAIMER
 STATED 'AC LIVING AREA' IS MEASURED TO THE EXTERIOR BOUNDARIES OF THE EXTERIOR WALLS AND THE CENTERLINE OF INTERIOR DEMISING WALLS AND IN FACT VARIES FROM THE SQUARE FOOTAGE AND DIMENSIONS THAT WOULD BE DETERMINED BY USING THE DESCRIPTION AND DEFINITION OF THE "UNIT" SET FORTH IN THE DECLARATION (WHICH GENERALLY ONLY INCLUDES THE INTERIOR AIRSPACE BETWEEN THE PERIMETER WALLS AND EXCLUDES ALL INTERIOR STRUCTURAL COMPONENTS AND OTHER COMMON ELEMENTS). THIS METHOD IS GENERALLY USED IN SALES MATERIALS AND IS PROVIDED TO ALLOW A PROSPECTIVE BUYER TO COMPARE THE UNITS WITH UNITS IN OTHER CONDOMINIUM PROJECTS THAT UTILIZE THE SAME METHOD. THE AC LIVING AREA OF EACH UNIT TYPE, CALCULATED IN ACCORDANCE WITH THE DEFINITION SET FORTH IN THE CONDOMINIUM DECLARATION, WOULD BE: 3,131 SQ. FT. AS TO UNIT 2 NORTH, 3,108 SQ. FT. AS TO UNIT 2 SOUTH, 3,131 SQ. FT. AS TO UNIT 3 NORTH, 3,108 SQ. FT. AS TO UNIT 3 SOUTH, 3,131 SQ. FT. AS TO UNIT 4 NORTH, 3,108 SQ. FT. AS TO UNIT 4 SOUTH, 3,131 SQ. FT. AS TO UNIT PH NORTH, AND 3,108 SQ. FT. AS TO UNIT PH SOUTH. ALL DIMENSIONS ARE ESTIMATES WHICH WILL VARY WITH ACTUAL CONSTRUCTION, AND ALL FLOOR PLANS, SPECIFICATIONS AND OTHER DEVELOPMENT PLANS ARE SUBJECT TO CHANGE AND WILL NOT NECESSARILY ACCURATELY REFLECT THE FINAL PLANS AND SPECIFICATIONS FOR THE DEVELOPMENT. ALL DEPICTIONS OF FURNITURE, APPLIANCES, COUNTERS, SOFFITS, FLOOR COVERINGS AND OTHER MATTERS OF DETAIL, INCLUDING, WITHOUT LIMITATION, ITEMS OF FINISH AND DECORATION, ARE CONCEPTUAL ONLY AND ARE NOT NECESSARILY INCLUDED IN EACH UNIT. SAID ITEMS ARE ONLY INCLUDED IF AND TO THE EXTENT PROVIDED IN YOUR PURCHASE AGREEMENT. PLEASE NOTE THAT THE AREAS LISTED ABOVE INCLUDE THE PROPOSED SQUARE FOOTAGE OF TERRACES AND ROOF DECKS. NOTE THAT THOSE COMPONENTS ARE NOT PART OF THE UNIT, BUT RATHER ARE APPURTENANCES AS TO WHICH PURCHASERS MAY BE ASSIGNED EXCLUSIVE USE. THE BALCONY DIMENSIONS VARY AND THE AREA STATED RELATES TO THE LARGEST BALCONY AND/OR THE COMBINATION OF ONE (1) OR MORE BALCONIES ADJACENT TO A UNIT. THE ACTUAL BALCONY(IES) MAY BE SMALLER. SEE THE DECLARATION FOR THE SPECIFIC DIMENSIONS OF ANY TERRACE APPURTENANT TO A PARTICULAR UNIT. DIMENSIONS OF TERRACES AND ROOF DECKS MAY NOT BE AS STATED.

PENTHOUSE NORTH

3 BEDROOMS + DEN | 4.5 BATHROOMS

INTERIOR LIVING AREA: 3,131 SQ.FT.

EXTERIOR LIVING AREA: 692 SQ. FT. + ROOFTOP

CASA MURANO

141 ISLE OF VENICE - FORT LAUDERDALE



141 ISLE OF VENICE DRIVE, FORT LAUDERDALE, FL 33301 | WWW.CASAMURANOLASOLAS.COM

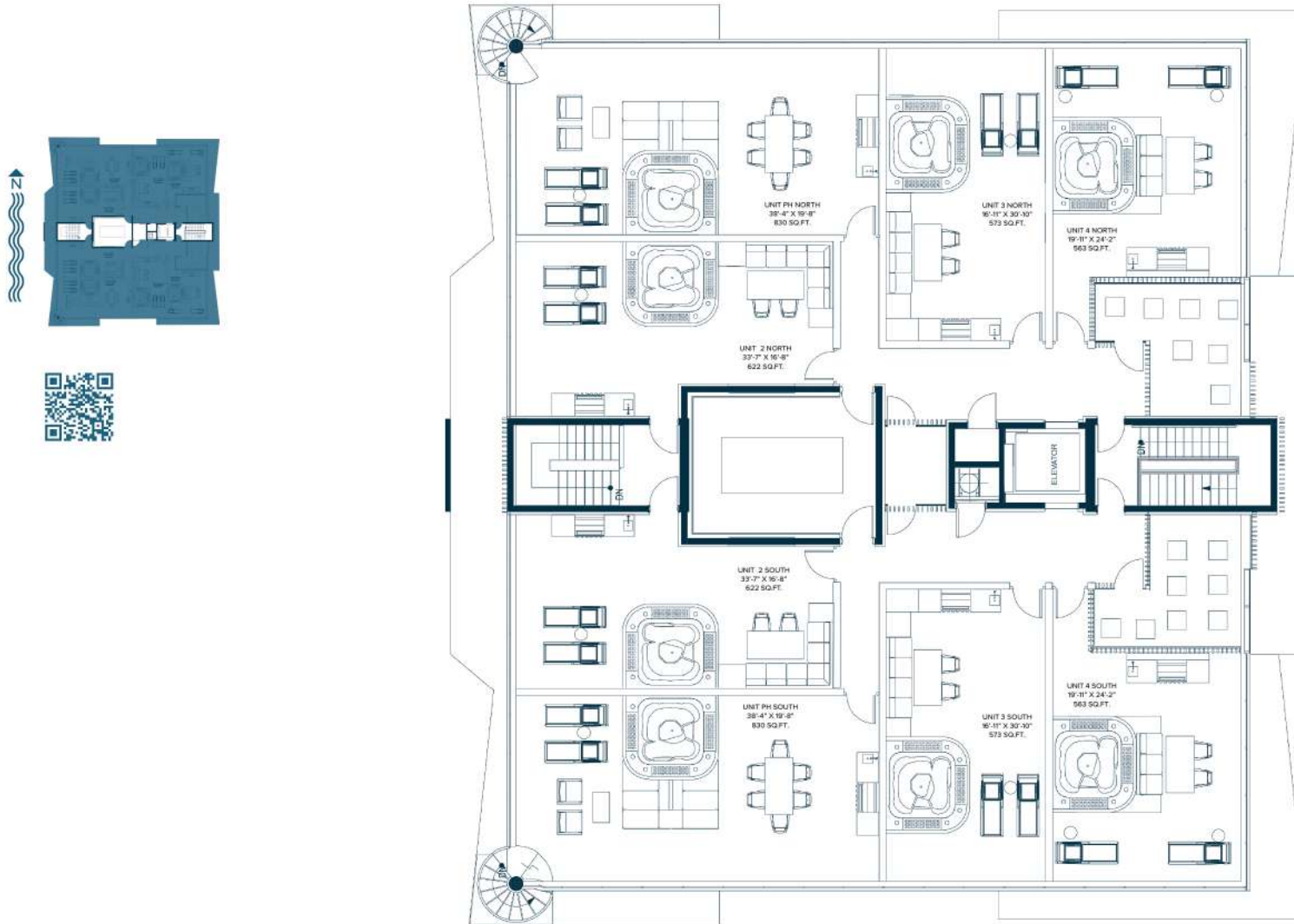
DISCLAIMER
 STATED "AC LIVING AREA" IS MEASURED TO THE EXTERIOR BOUNDARIES OF THE EXTERIOR WALLS AND THE CENTERLINE OF INTERIOR DEMISING WALLS AND IN FACT VARIES FROM THE SQUARE FOOTAGE AND DIMENSIONS THAT WOULD BE DETERMINED BY USING THE DESCRIPTION AND DEFINITION OF THE "UNIT" SET FORTH IN THE DECLARATION (WHICH GENERALLY ONLY INCLUDES THE INTERIOR AIRSPACE BETWEEN THE PERIMETER WALLS AND EXCLUDES ALL INTERIOR STRUCTURAL COMPONENTS AND OTHER COMMON ELEMENTS). THIS METHOD IS GENERALLY USED IN SALES MATERIALS AND IS PROVIDED TO ALLOW A PROSPECTIVE BUYER TO COMPARE THE UNITS WITH UNITS IN OTHER CONDOMINIUM PROJECTS THAT UTILIZE THE SAME METHOD. THE AC LIVING AREA OF EACH UNIT TYPE, CALCULATED IN ACCORDANCE WITH THE DEFINITION SET FORTH IN THE CONDOMINIUM DECLARATION, WOULD BE: 3,131 SQ. FT. AS TO UNIT 2 NORTH, 3,108 SQ. FT. AS TO UNIT 2 SOUTH, 3,131 SQ. FT. AS TO UNIT 3 NORTH, 3,108 SQ. FT. AS TO UNIT 3 SOUTH, 3,131 SQ. FT. AS TO UNIT 4 NORTH, 3,108 SQ. FT. AS TO UNIT 4 SOUTH, 3,131 SQ. FT. AS TO UNIT PH NORTH, AND 3,108 SQ. FT. AS TO UNIT PH SOUTH. ALL DIMENSIONS ARE ESTIMATES WHICH WILL VARY WITH ACTUAL CONSTRUCTION, AND ALL FLOOR PLANS, SPECIFICATIONS AND OTHER DEVELOPMENT PLANS ARE SUBJECT TO CHANGE AND WILL NOT NECESSARILY ACCURATELY REFLECT THE FINAL PLANS AND SPECIFICATIONS FOR THE DEVELOPMENT. ALL DEPICTIONS OF FURNITURE, APPLIANCES, COUNTERS, SOFFITS, FLOOR COVERINGS AND OTHER MATTERS OF DETAIL, INCLUDING, WITHOUT LIMITATION, ITEMS OF FINISH AND DECORATION, ARE CONCEPTUAL ONLY AND ARE NOT NECESSARILY INCLUDED IN EACH UNIT. SAID ITEMS ARE ONLY INCLUDED IF AND TO THE EXTENT PROVIDED IN YOUR PURCHASE AGREEMENT. PLEASE NOTE THAT THE AREAS LISTED ABOVE INCLUDE THE PROPOSED SQUARE FOOTAGE OF TERRACES AND ROOF DECKS. NOTE THAT THOSE COMPONENTS ARE NOT PART OF THE UNIT, BUT RATHER ARE APPURTENANCES AS TO WHICH PURCHASERS MAY BE ASSIGNED EXCLUSIVE USE. THE BALCONY DIMENSIONS VARY AND THE AREA STATED RELATES TO THE LARGEST BALCONY AND/OR THE COMBINATION OF ONE (1) OR MORE BALCONY(IES) MAY BE SMALLER. SEE THE DECLARATION FOR THE SPECIFIC DIMENSIONS OF ANY TERRACE APPURTENANT TO A PARTICULAR UNIT. DIMENSIONS OF TERRACES AND ROOF DECKS MAY NOT BE AS STATED.

ROOFTOP TERRACES

PENTHOUSE NORTH & SOUTH: 830 SQ.FT.
 RESIDENCE 2 NORTH & SOUTH: 622 SQ.FT.
 RESIDENCE 3 NORTH & SOUTH: 573 SQ.FT.
 RESIDENCE 4 NORTH & SOUTH: 563 SQ.FT.

CASA MURANO

141 ISLE OF VENICE - FORT LAUDERDALE



141 ISLE OF VENICE DRIVE, FORT LAUDERDALE, FL 33301 | WWW.CASAMURANOLASOLAS.COM

DISCLAIMER
 STATED "AC LIVING AREA" IS MEASURED TO THE EXTERIOR BOUNDARIES OF THE EXTERIOR WALLS AND THE CENTERLINE OF INTERIOR DEMISING WALLS AND IN FACT VARIES FROM THE SQUARE FOOTAGE AND DIMENSIONS THAT WOULD BE DETERMINED BY USING THE DESCRIPTION AND DEFINITION OF THE "UNIT" SET FORTH IN THE DECLARATION (WHICH GENERALLY ONLY INCLUDES THE INTERIOR AIRSPACE BETWEEN THE PERIMETER WALLS AND EXCLUDES ALL INTERIOR STRUCTURAL COMPONENTS AND OTHER COMMON ELEMENTS). THIS METHOD IS GENERALLY USED IN SALES MATERIALS AND IS PROVIDED TO ALLOW A PROSPECTIVE BUYER TO COMPARE THE UNITS WITH UNITS IN OTHER CONDOMINIUM PROJECTS THAT UTILIZE THE SAME METHOD. THE AC LIVING AREA OF EACH UNIT TYPE, CALCULATED IN ACCORDANCE WITH THE DEFINITION SET FORTH IN THE CONDOMINIUM DECLARATION, WOULD BE: 3,131 SQ. FT. AS TO UNIT 2 NORTH, 3,108 SQ. FT. AS TO UNIT 2 SOUTH, 3,131 SQ. FT. AS TO UNIT 3 NORTH, 3,131 SQ. FT. AS TO UNIT 3 SOUTH, 3,108 SQ. FT. AS TO UNIT 4 NORTH, 3,108 SQ. FT. AS TO UNIT 4 SOUTH, 3,131 SQ. FT. AS TO UNIT PH NORTH, AND 3,108 SQ. FT. AS TO UNIT PH SOUTH. ALL DIMENSIONS ARE ESTIMATES WHICH WILL VARY WITH ACTUAL CONSTRUCTION, AND ALL FLOOR PLANS, SPECIFICATIONS AND OTHER DEVELOPMENT PLANS ARE SUBJECT TO CHANGE AND WILL NOT NECESSARILY ACCURATELY REFLECT THE FINAL PLANS AND SPECIFICATIONS FOR THE DEVELOPMENT. ALL DEPICTIONS OF FURNITURE, APPLIANCES, COUNTERS, SOFFITS, FLOOR COVERINGS AND OTHER MATTERS OF DETAIL, INCLUDING, WITHOUT LIMITATION, ITEMS OF FINISH AND DECORATION, ARE CONCEPTUAL ONLY AND ARE NOT NECESSARILY INCLUDED IN EACH UNIT. SAID ITEMS ARE ONLY INCLUDED IF AND TO THE EXTENT PROVIDED IN YOUR PURCHASE AGREEMENT. PLEASE NOTE THAT THE AREAS LISTED ABOVE INCLUDE THE PROPOSED SQUARE FOOTAGE OF TERRACES AND ROOF DECKS. NOTE THAT THOSE COMPONENTS ARE NOT PART OF THE UNIT, BUT RATHER ARE APPURTENANCES AS TO WHICH PURCHASERS MAY BE ASSIGNED EXCLUSIVE USE. THE BALCONY DIMENSIONS VARY AND THE AREA STATED RELATES TO THE LARGEST BALCONY AND/OR THE COMBINATION OF ONE (1) OR MORE BALCONIES ADJACENT TO A UNIT. THE ACTUAL BALCONY(IES) MAY BE SMALLER. SEE THE DECLARATION FOR THE SPECIFIC DIMENSIONS OF ANY TERRACE APPURTENANT TO A PARTICULAR UNIT. DIMENSIONS OF TERRACES AND ROOF DECKS MAY NOT BE AS STATED.