

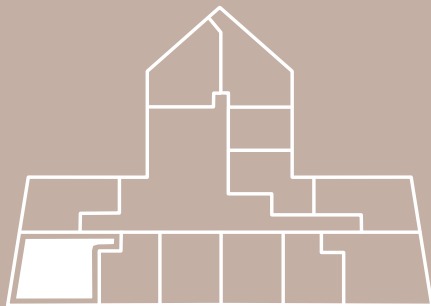


ALHAMBRA PARC

RESIDENCE 01 LEVEL 4

3 BED + 3.5 BATH
STUDIO/DEN
2 BALCONIES

INTERIOR: 1,980 SQ. FT.
BALCONY 1: 496 SQ. FT.
BALCONY 2: 369 SQ. FT.
TOTAL: 2,845 SQ. FT.



The drawings, specifications, dimensions and any other information in these floor plans are conceptual and for illustration purposes only and should not be relied upon. References should be made to the plans and specifications at Builder's office for accurate detailed information of the floor plans including calculation of square footage, dimensions, and other information.





ALHAMBRA PARC

RESIDENCE 02 LEVEL 4

2 BED + 2.5 BATH
2 BALCONIES

INTERIOR: 1,347 SQ. FT.
BALCONY 1: 347 SQ. FT.
BALCONY 2: 100 SQ. FT.
TOTAL: 1,794 SQ. FT.



The drawings, specifications, dimensions and any other information in these floor plans are conceptual and for illustration purposes only and should not be relied upon. References should be made to the plans and specifications at Builder's office for accurate detailed information of the floor plans including calculation of square footage, dimensions, and other information.



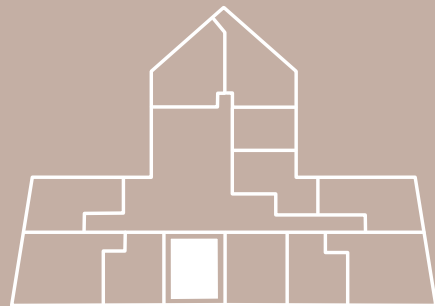


ALHAMBRA PARC

RESIDENCE 03 LEVEL 4

2 BED + 2.5 BATH
STUDIO/DEN
2 BALCONIES

INTERIOR: 1,1629 SQ. FT.
BALCONY 1: 204 SQ. FT.
BALCONY 2: 225 SQ. FT.
TOTAL: 2,058 SQ. FT.



The drawings, specifications, dimensions and any other information in these floor plans are conceptual and for illustration purposes only and should not be relied upon. References should be made to the plans and specifications at Builder's office for accurate detailed information of the floor plans including calculation of square footage, dimensions, and other information.



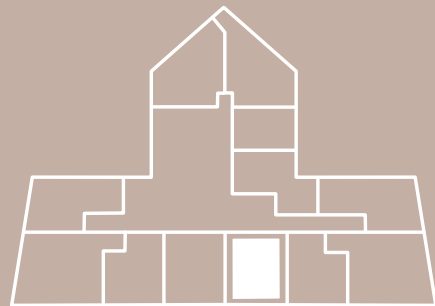


ALHAMBRA PARC

RESIDENCE 04 LEVEL 4

2 BED + 2.5 BATH
STUDIO/DEN
2 BALCONIES

INTERIOR: 1,629 SQ. FT.
BALCONY 1: 204 SQ. FT.
BALCONY 2: 225 SQ. FT.
TOTAL: 2,058 SQ. FT.



The drawings, specifications, dimensions and any other information in these floor plans are conceptual and for illustration purposes only and should not be relied upon. References should be made to the plans and specifications at Builder's office for accurate detailed information of the floor plans including calculation of square footage, dimensions, and other information.



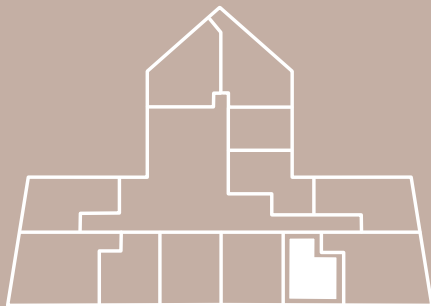


ALHAMBRA PARC

RESIDENCE 05 LEVEL 4

2 BED + 2.5 BATH
2 BALCONIES

INTERIOR: 1,347 SQ. FT.
BALCONY 1: 347 SQ. FT.
BALCONY 2: 100 SQ. FT.
TOTAL: 1,794 SQ. FT.



The drawings, specifications, dimensions and any other information in these floor plans are conceptual and for illustration purposes only and should not be relied upon. References should be made to the plans and specifications at Builder's office for accurate detailed information of the floor plans including calculation of square footage, dimensions, and other information.



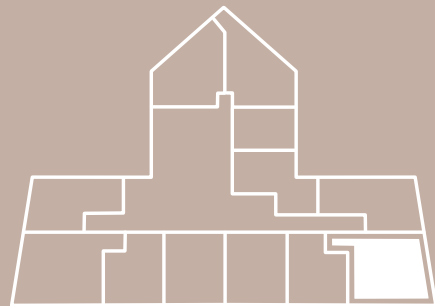


ALHAMBRA PARC

RESIDENCE 06 LEVEL 4

3 BED + 3.5 BATH
STUDIO/DEN
2 BALCONIES

INTERIOR: 1,980 SQ. FT.
BALCONY 1: 496 SQ. FT.
BALCONY 2: 369 SQ. FT.
TOTAL: 2,845 SQ. FT.



The drawings, specifications, dimensions and any other information in these floor plans are conceptual and for illustration purposes only and should not be relied upon. References should be made to the plans and specifications at Builder's office for accurate detailed information of the floor plans including calculation of square footage, dimensions, and other information.



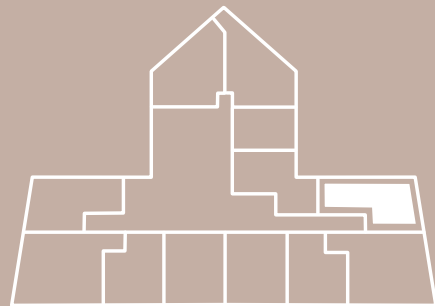


ALHAMBRA PARC

RESIDENCE 07 LEVEL 4

2 BED + 2.5 BATH
FAMILY ROOM
2 BALCONIES

INTERIOR: 1,858 SQ. FT.
BALCONY 1: 1,071 SQ. FT.
BALCONY 2: 369 SQ. FT.
TOTAL: 3,194 SQ. FT.



The drawings, specifications, dimensions and any other information in these floor plans are conceptual and for illustration purposes only and should not be relied upon. References should be made to the plans and specifications at Builder's office for accurate detailed information of the floor plans including calculation of square footage, dimensions, and other information.





ALHAMBRA PARC

RESIDENCE 08 LEVEL 4

3 BED + 3.5 BATH
STUDIO/DEN
1 BALCONY

INTERIOR: 1,993 SQ. FT.
BALCONY: 629 SQ. FT.
TOTAL: 2,622 SQ. FT.



The drawings, specifications, dimensions and any other information in these floor plans are conceptual and for illustration purposes only and should not be relied upon. References should be made to the plans and specifications at Builder's office for accurate detailed information of the floor plans including calculation of square footage, dimensions, and other information.



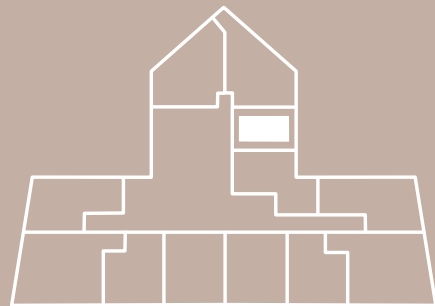


ALHAMBRA PARC

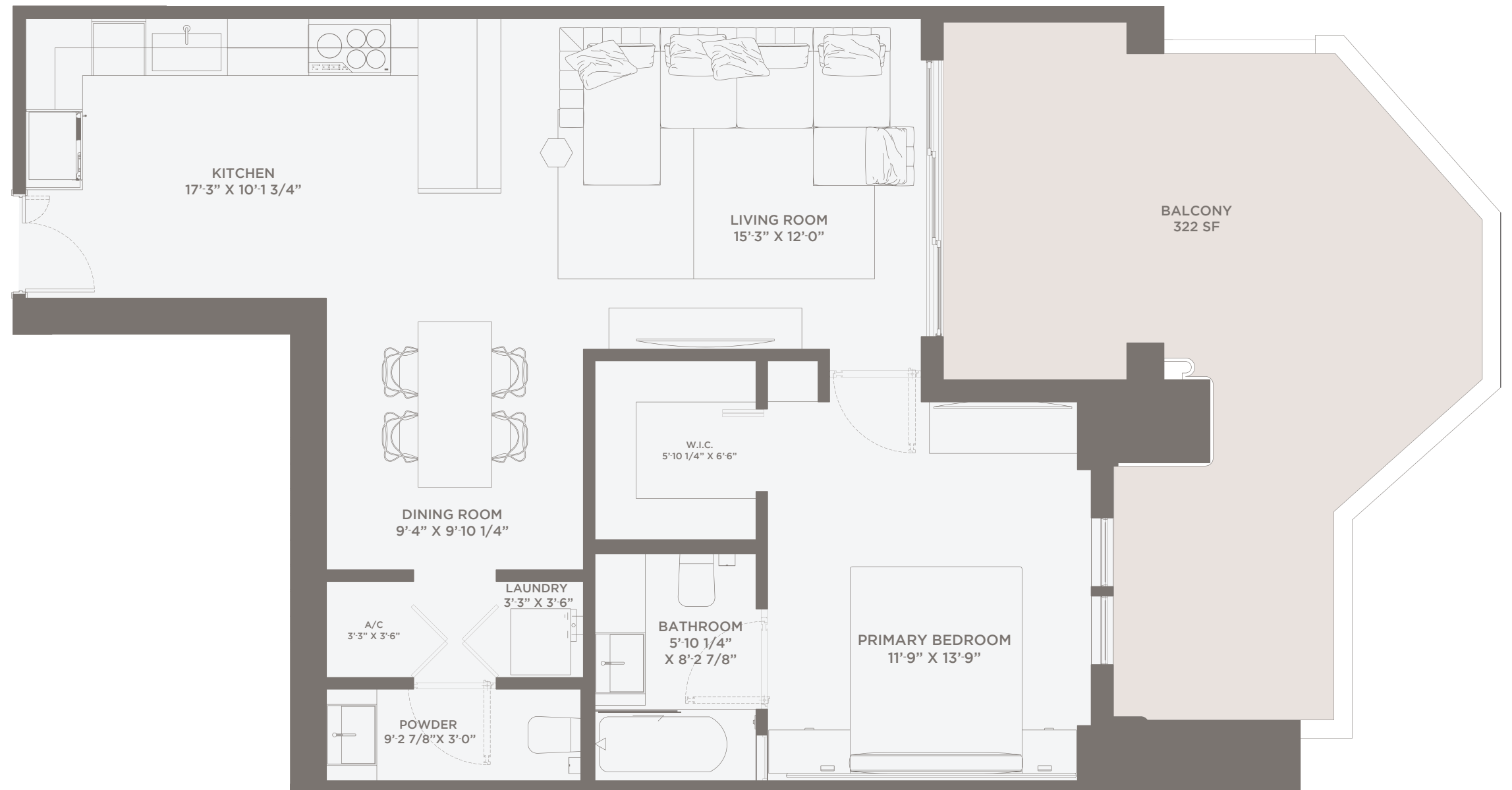
RESIDENCE 09 LEVEL 4

1 BED + 1.5 BATH
1 BALCONY

INTERIOR: 863 SQ. FT.
BALCONY: 322 SQ. FT.
TOTAL: 1,185 SQ. FT.



The drawings, specifications, dimensions and any other information in these floor plans are conceptual and for illustration purposes only and should not be relied upon. References should be made to the plans and specifications at Builder's office for accurate detailed information of the floor plans including calculation of square footage, dimensions, and other information.



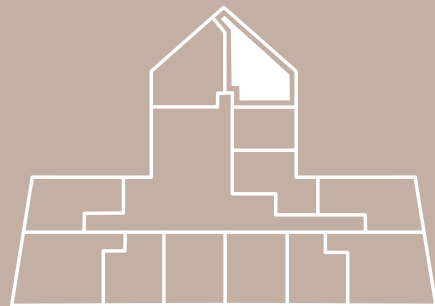


ALHAMBRA PARC

RESIDENCE 10 LEVEL 4

2 BED + 2.5 BATH
STUDIO/DEN
3 BALCONIES

INTERIOR: 1,925 SQ. FT.
BALCONY 1: 849 SQ. FT.
BALCONY 2: 118 SQ. FT.
BALCONY 3: 137 SQ. FT.
TOTAL: 3,029 SQ. FT.



The drawings, specifications, dimensions and any other information in these floor plans are conceptual and for illustration purposes only and should not be relied upon. References should be made to the plans and specifications at Builder's office for accurate detailed information of the floor plans including calculation of square footage, dimensions, and other information.





ALHAMBRA PARC

RESIDENCE 11 LEVEL 4

2 BED + 2.5 BATH
STUDIO/DEN
1 BALCONY

INTERIOR: 1,671 SQ. FT.
BALCONY 1: 941 SQ. FT.
TOTAL: 2,612 SQ. FT.



The drawings, specifications, dimensions and any other information in these floor plans are conceptual and for illustration purposes only and should not be relied upon. References should be made to the plans and specifications at Builder's office for accurate detailed information of the floor plans including calculation of square footage, dimensions, and other information.



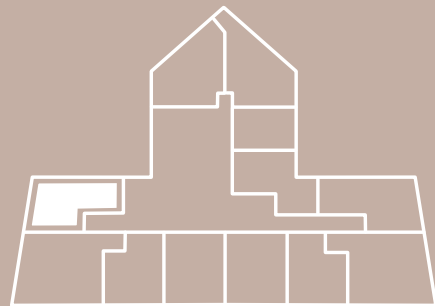


ALHAMBRA PARC

RESIDENCE 12 LEVEL 4

2 BED + 2.5 BATH
FAMILY ROOM
2 BALCONIES

INTERIOR: 1,859 SQ. FT.
BALCONY 1: 898 SQ. FT.
BALCONY 2: 369 SQ. FT.
TOTAL: 3,126 SQ. FT.



The drawings, specifications, dimensions and any other information in these floor plans are conceptual and for illustration purposes only and should not be relied upon. References should be made to the plans and specifications at Builder's office for accurate detailed information of the floor plans including calculation of square footage, dimensions, and other information.



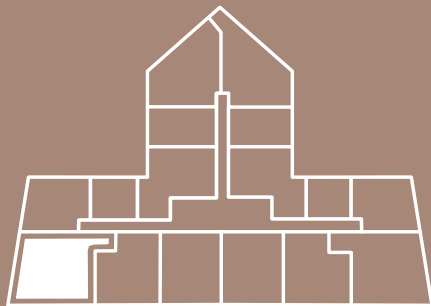


ALHAMBRA PARC

RESIDENCE 01 LEVELS 5-8

3 BED + 3.5 BATH
STUDIO/DEN
2 BALCONIES

INTERIOR: 1,969 SQ. FT.
BALCONY 1: 220 SQ. FT.
BALCONY 2: 71 SQ. FT.
TOTAL: 2,260 SQ. FT.



The drawings, specifications, dimensions and any other information in these floor plans are conceptual and for illustration purposes only and should not be relied upon. References should be made to the plans and specifications at Builder's office for accurate detailed information of the floor plans including calculation of square footage, dimensions, and other information.

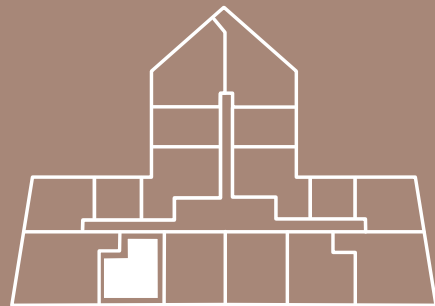


ALHAMBRA PARC

RESIDENCE 02 LEVELS 5-8

2 BED + 2.5 BATH
1 BALCONY

INTERIOR: 1,343 SQ. FT.
BALCONY: 287 SQ. FT.
TOTAL: 1,630 SQ. FT.



The drawings, specifications, dimensions and any other information in these floor plans are conceptual and for illustration purposes only and should not be relied upon. References should be made to the plans and specifications at Builder's office for accurate detailed information of the floor plans including calculation of square footage, dimensions, and other information.



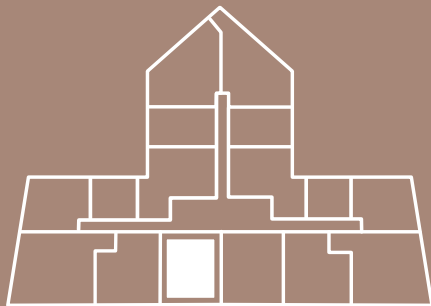


ALHAMBRA PARC

RESIDENCE 03 LEVELS 5-8

2 BED + 2.5 BATH
STUDIO/DEN
1 BALCONY

INTERIOR: 1,621 SQ. FT.
BALCONY: 142 SQ. FT.
TOTAL: 1,763 SQ. FT.



The drawings, specifications, dimensions and any other information in these floor plans are conceptual and for illustration purposes only and should not be relied upon. References should be made to the plans and specifications at Builder's office for accurate detailed information of the floor plans including calculation of square footage, dimensions, and other information.



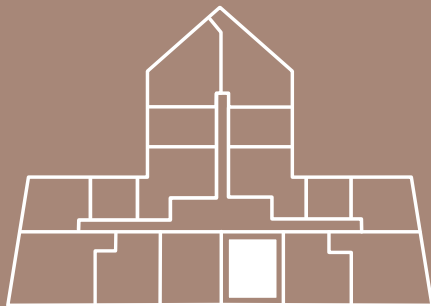


ALHAMBRA PARC

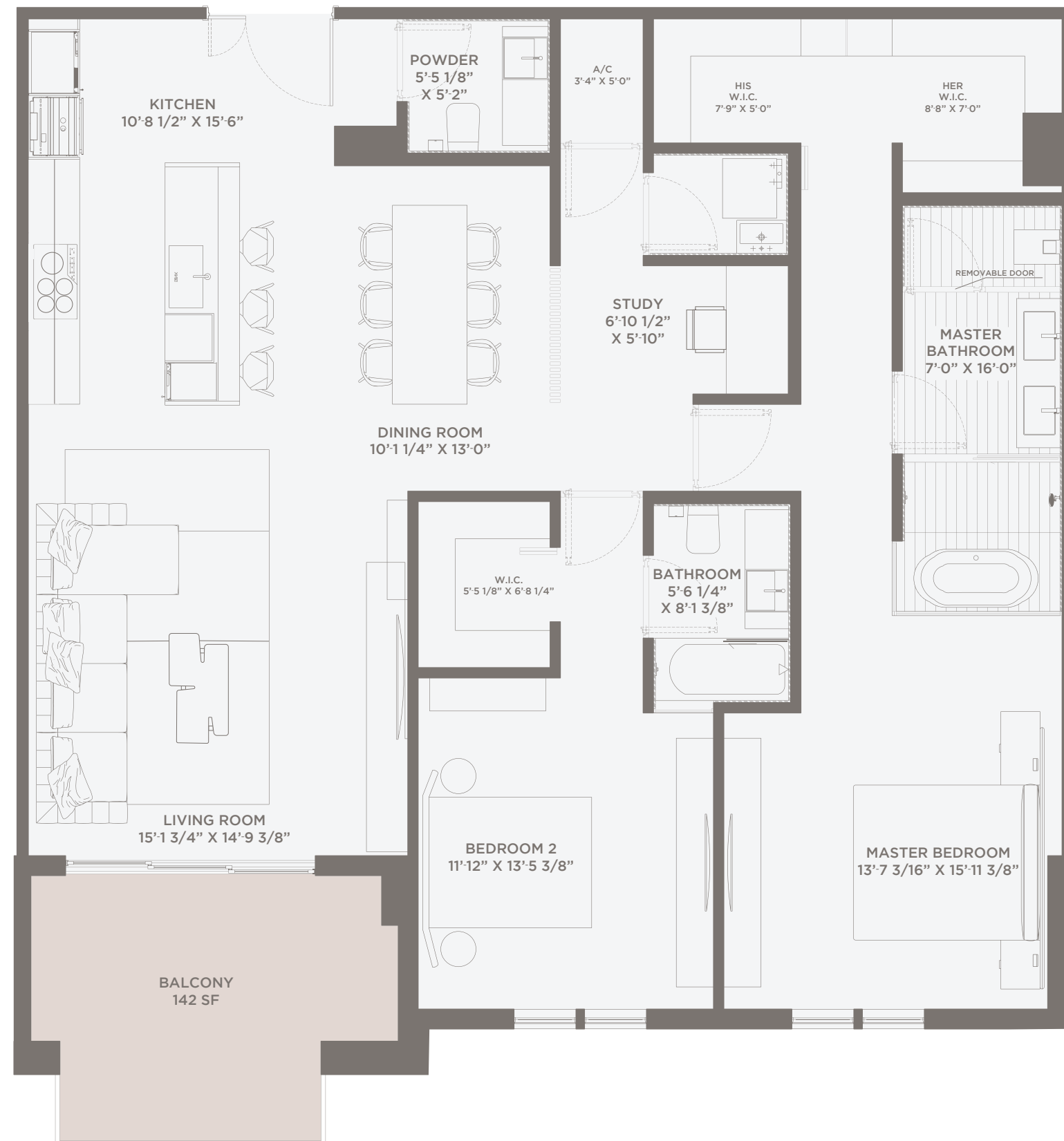
RESIDENCE 04 LEVELS 5-8

2 BED + 2.5 BATH
STUDIO/DEN
1 BALCONY

INTERIOR: 1,621 SQ. FT.
BALCONY: 142 SQ. FT.
TOTAL: 1,763 SQ. FT.



The drawings, specifications, dimensions and any other information in these floor plans are conceptual and for illustration purposes only and should not be relied upon. References should be made to the plans and specifications at Builder's office for accurate detailed information of the floor plans including calculation of square footage, dimensions, and other information.



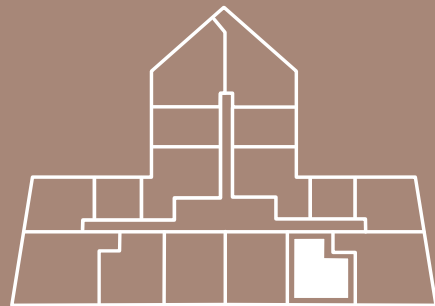


ALHAMBRA PARC

RESIDENCE 05 LEVELS 5-8

2 BED + 2.5 BATH
1 BALCONY

INTERIOR: 1,343 SQ. FT.
BALCONY: 287 SQ. FT.
TOTAL: 1,630 SQ. FT.



The drawings, specifications, dimensions and any other information in these floor plans are conceptual and for illustration purposes only and should not be relied upon. References should be made to the plans and specifications at Builder's office for accurate detailed information of the floor plans including calculation of square footage, dimensions, and other information.





ALHAMBRA PARC

RESIDENCE 06 LEVELS 5-8

3 BED + 3.5 BATH
STUDIO/DEN
2 BALCONIES

INTERIOR: 1,969 SQ. FT
BALCONY 1: 220 SQ. FT
BALCONY 2: 71 SQ. FT
TOTAL: 2,260 SQ. FT



The drawings, specifications, dimensions and any other information in these floor plans are conceptual and for illustration purposes only and should not be relied upon. References should be made to the plans and specifications at Builder's office for accurate detailed information of the floor plans including calculation of square footage, dimensions, and other information.



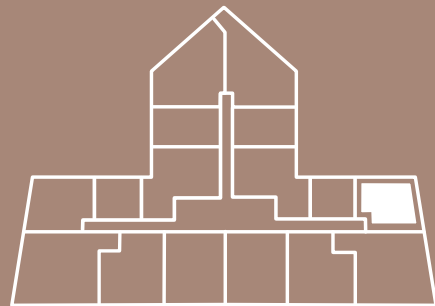


ALHAMBRA PARC

RESIDENCE 07 LEVELS 5-8

2 BED + 2.5 BATH
2 BALCONIES

INTERIOR: 1,677 SQ. FT
BALCONY 1: 132 SQ. FT
BALCONY 2: 71 SQ. FT
TOTAL: 1,880 SQ. FT



The drawings, specifications, dimensions and any other information in these floor plans are conceptual and for illustration purposes only and should not be relied upon. References should be made to the plans and specifications at Builder's office for accurate detailed information of the floor plans including calculation of square footage, dimensions, and other information.





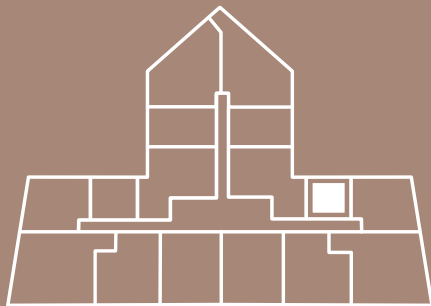
ALHAMBRA PARC

RESIDENCE 08

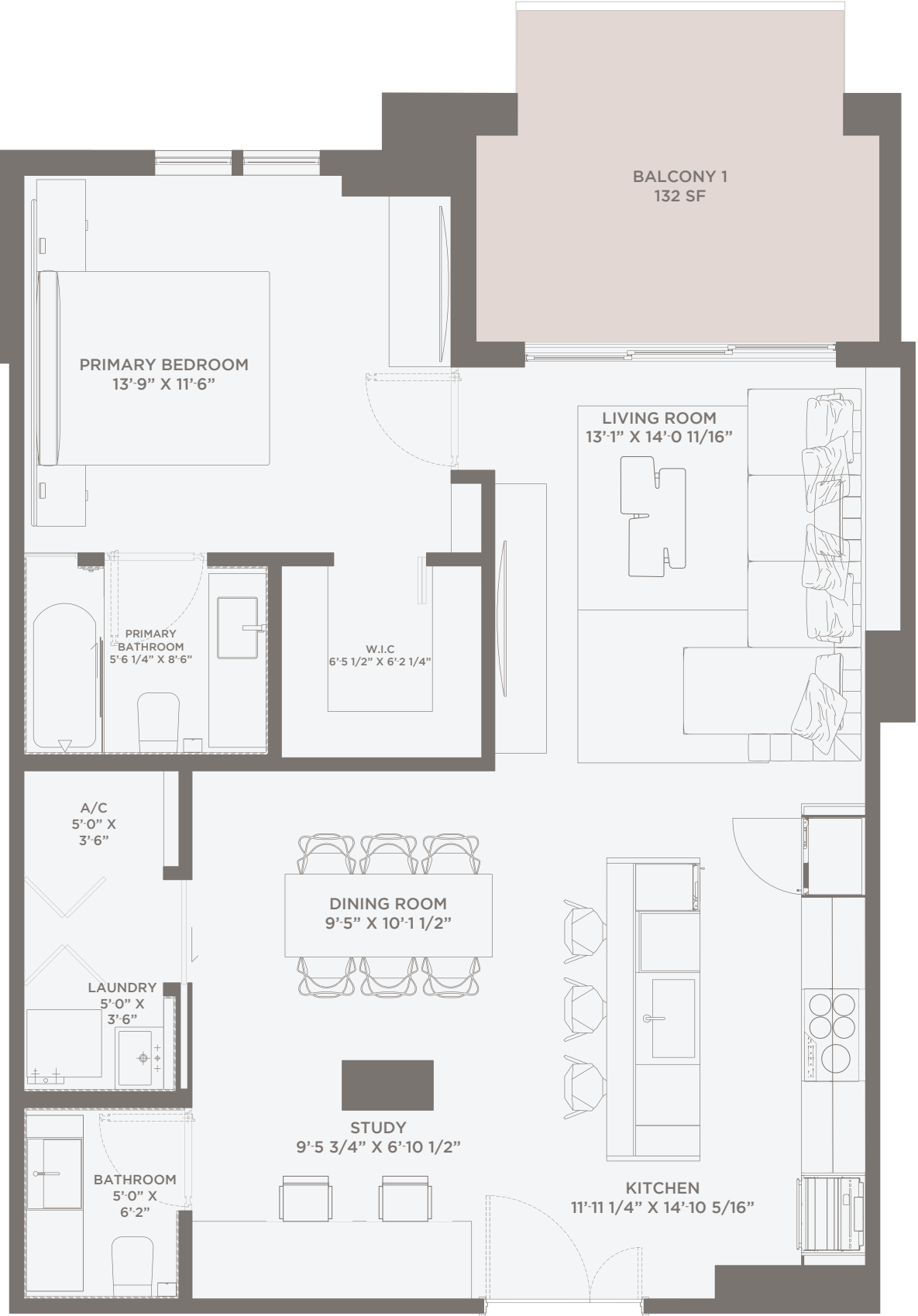
LEVELS 5-8

1 BED + 1.5 BATH
STUDIO/DEN
1 BALCONY

INTERIOR: 965 SQ. FT.
BALCONY: 132 SQ. FT.
TOTAL: 1,097 SQ. FT.



The drawings, specifications, dimensions and any other information in these floor plans are conceptual and for illustration purposes only and should not be relied upon. References should be made to the plans and specifications at Builder's office for accurate detailed information of the floor plans including calculation of square footage, dimensions, and other information.



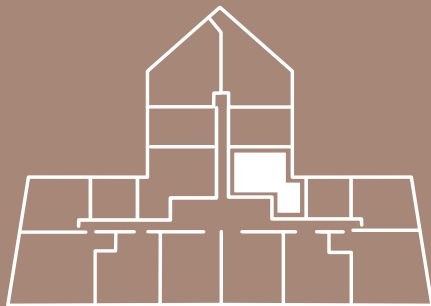


ALHAMBRA PARC

RESIDENCE 09 LEVELS 5-8

2 BED + 2.5 BATH
1 BALCONY

INTERIOR: 1,615 SQ. FT.
BALCONY: 233 SQ. FT.
TOTAL: 1,848 SQ. FT.



The drawings, specifications, dimensions and any other information in these floor plans are conceptual and for illustration purposes only and should not be relied upon. References should be made to the plans and specifications at Builder's office for accurate detailed information of the floor plans including calculation of square footage, dimensions, and other information.



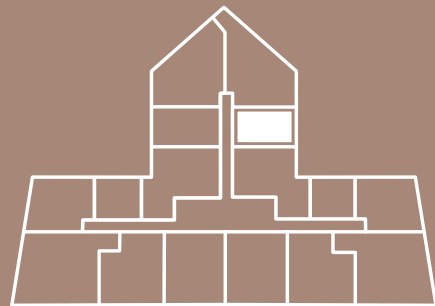


ALHAMBRA PARC

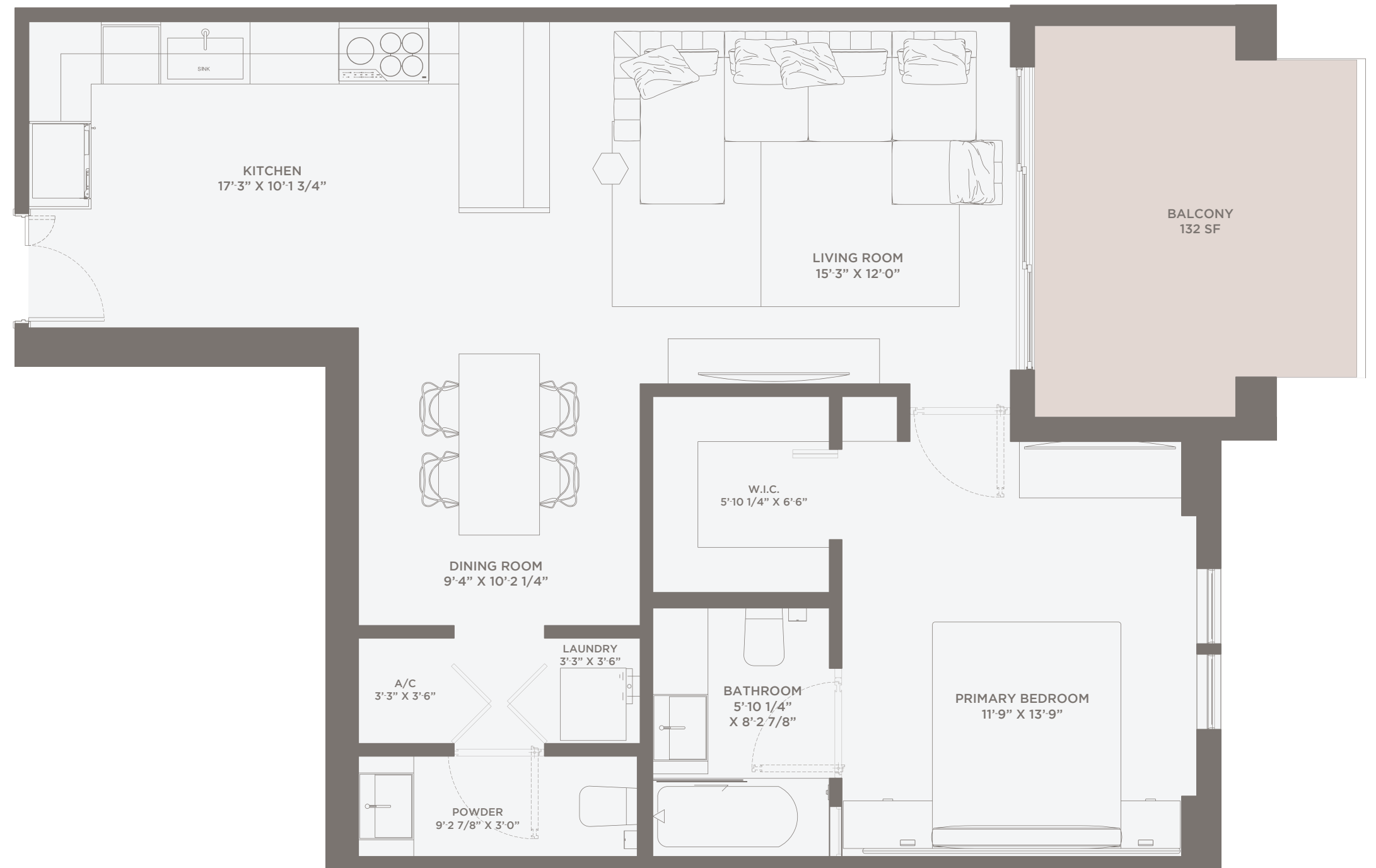
RESIDENCE 10 LEVELS 5-8

1 BED + 1.5 BATH
1 BALCONY

INTERIOR: 858 SQ. FT.
BALCONY: 132 SQ. FT.
TOTAL: 990 SQ. FT.



The drawings, specifications, dimensions and any other information in these floor plans are conceptual and for illustration purposes only and should not be relied upon. References should be made to the plans and specifications at Builder's office for accurate detailed information of the floor plans including calculation of square footage, dimensions, and other information.



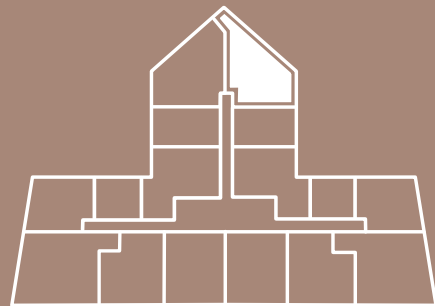


ALHAMBRA PARC

RESIDENCE 11 LEVELS 5-8

2 BED + 2.5 BATH
STUDIO/DEN
2 BALCONIES

INTERIOR: 1,905 SQ. FT.
BALCONY 1: 148 SQ. FT.
BALCONY 2: 132 SQ. FT.
TOTAL: 2,185 SQ. FT.



The drawings, specifications, dimensions and any other information in these floor plans are conceptual and for illustration purposes only and should not be relied upon. References should be made to the plans and specifications at Builder's office for accurate detailed information of the floor plans including calculation of square footage, dimensions, and other information.



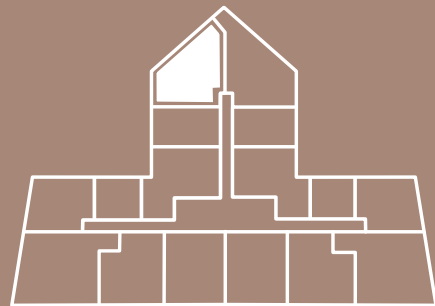


ALHAMBRA PARC

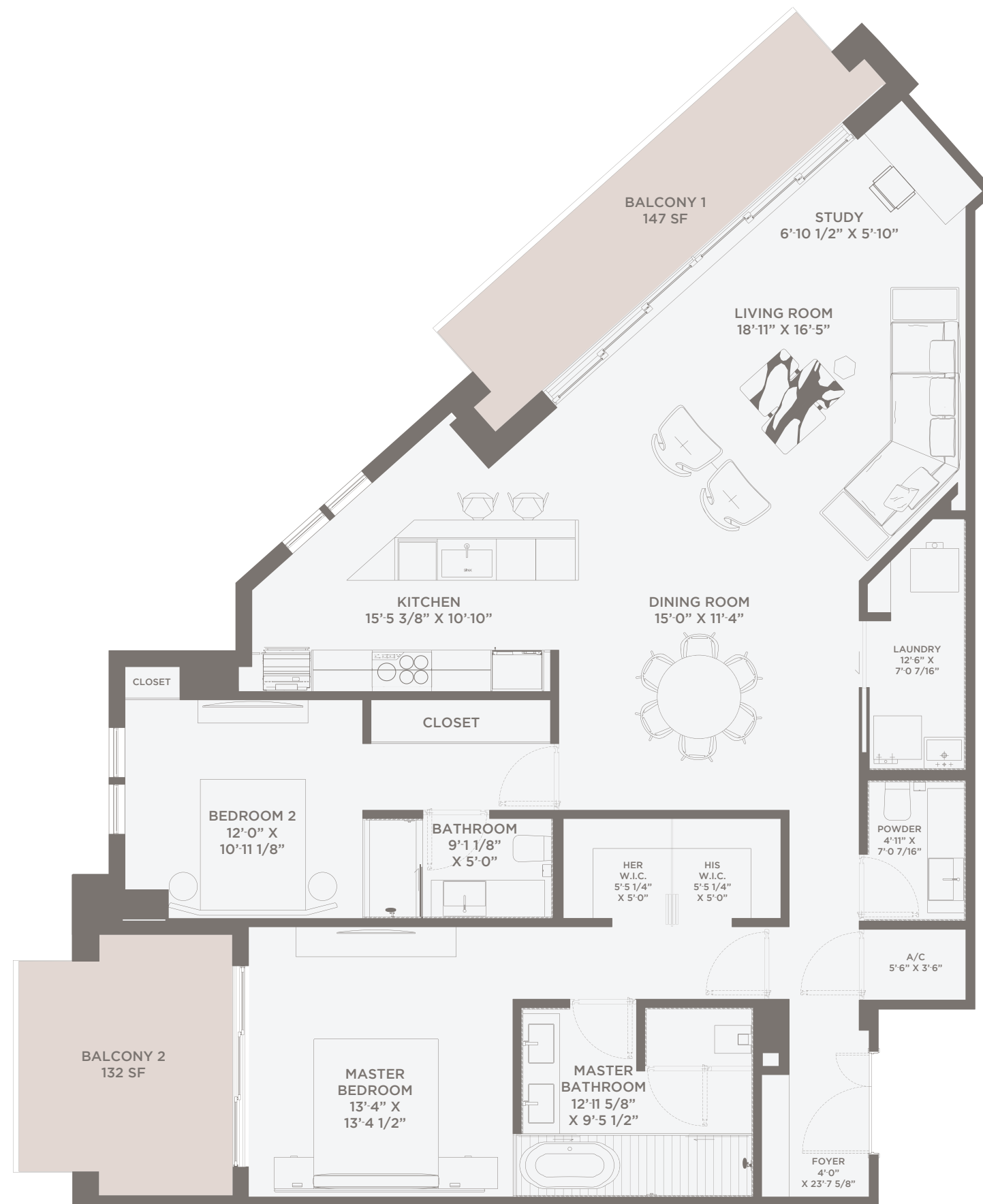
RESIDENCE 12 LEVELS 5-8

2 BED + 2.5 BATH
STUDIO/DEN
2 BALCONIES

INTERIOR: 1,665 SQ. FT.
BALCONY 1: 147 SQ. FT.
BALCONY 2: 132 SQ. FT.
TOTAL: 1,944 SQ. FT.



The drawings, specifications, dimensions and any other information in these floor plans are conceptual and for illustration purposes only and should not be relied upon. References should be made to the plans and specifications at Builder's office for accurate detailed information of the floor plans including calculation of square footage, dimensions, and other information.



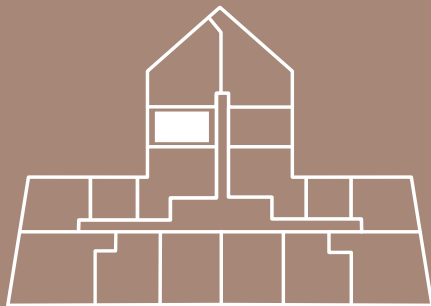


ALHAMBRA PARC

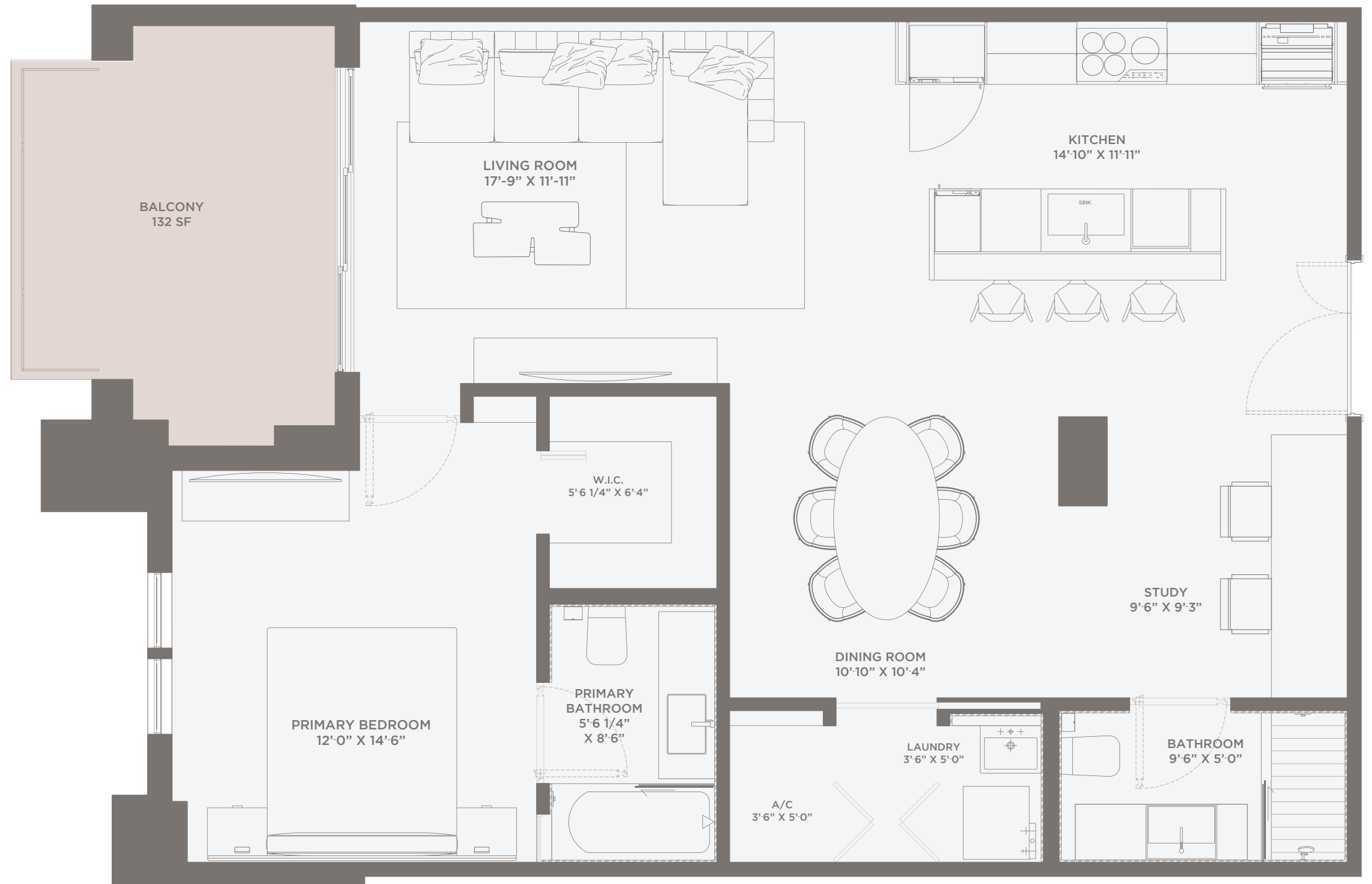
RESIDENCE 13 LEVELS 5-8

1 BED + 1.5 BATH
STUDIO / DEN
1 BALCONY

INTERIOR: 1,036 SQ. FT
BALCONY 1: 132 SQ. FT
TOTAL: 1,168 SQ. FT



The drawings, specifications, dimensions and any other information in these floor plans are conceptual and for illustration purposes only and should not be relied upon. References should be made to the plans and specifications at Builder's office for accurate detailed information of the floor plans including calculation of square footage, dimensions, and other information.



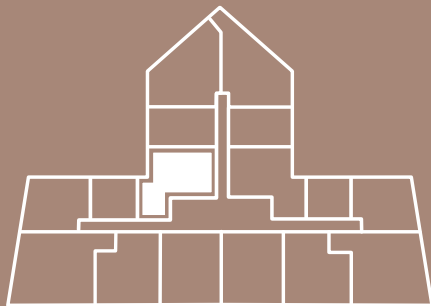


ALHAMBRA PARC

RESIDENCE 14 LEVELS 5-8

2 BED + 2.5 BATH
1 BALCONY

INTERIOR: 1,625 SQ. FT.
BALCONY: 233 SQ. FT.
TOTAL: 1,853 SQ. FT.



The drawings, specifications, dimensions and any other information in these floor plans are conceptual and for illustration purposes only and should not be relied upon. References should be made to the plans and specifications at Builder's office for accurate detailed information of the floor plans including calculation of square footage, dimensions, and other information.



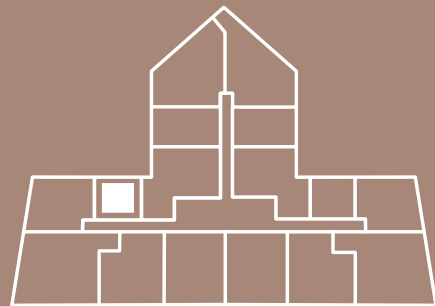


ALHAMBRA PARC

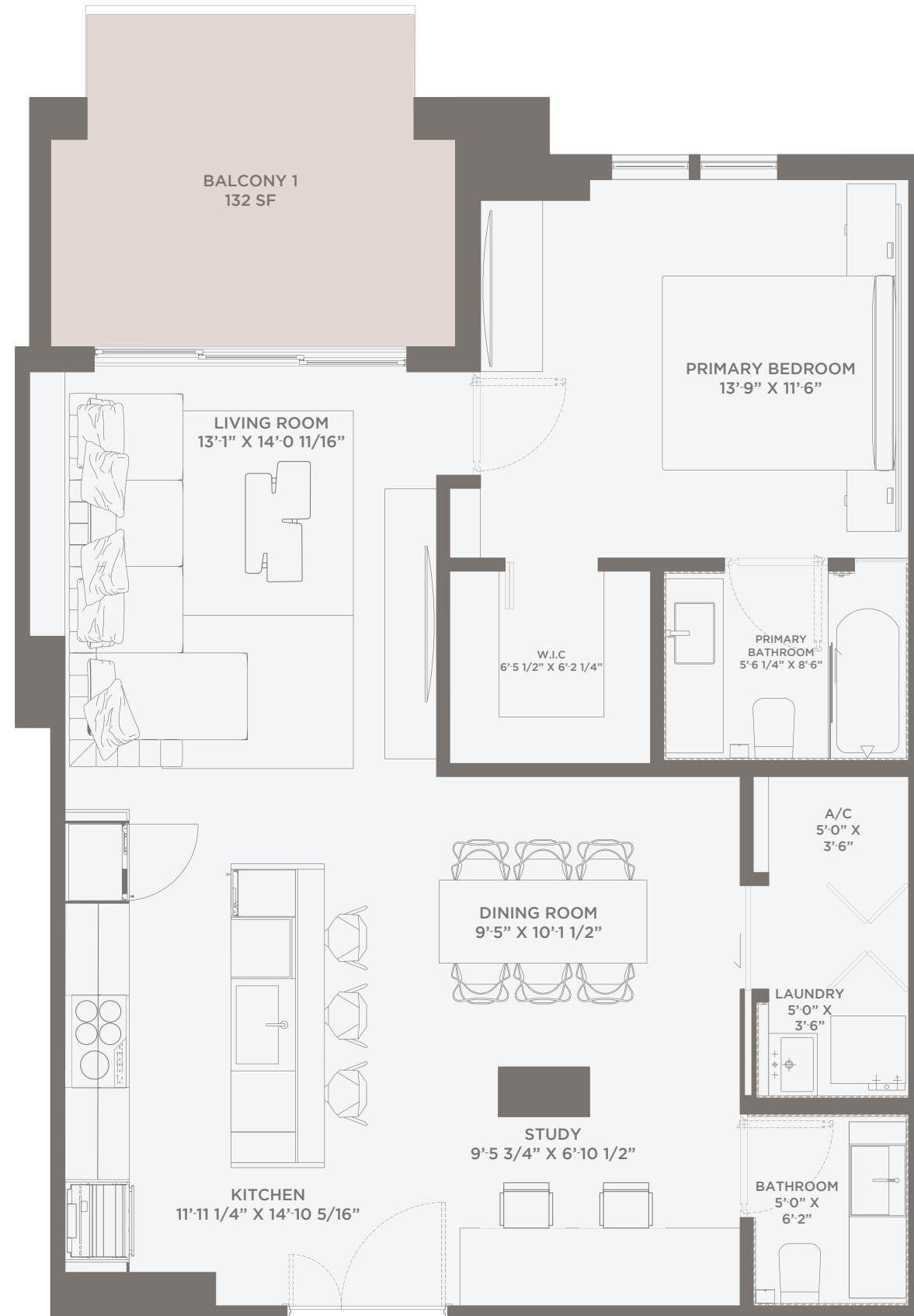
RESIDENCE 15 LEVELS 5-8

1 BED + 1.5 BATH
STUDIO/DEN
1 BALCONY

INTERIOR: 965 SQ. FT
BALCONY 1: 132 SQ. FT
TOTAL: 1,097 SQ. FT



The drawings, specifications, dimensions and any other information in these floor plans are conceptual and for illustration purposes only and should not be relied upon. References should be made to the plans and specifications at Builder's office for accurate detailed information of the floor plans including calculation of square footage, dimensions, and other information.



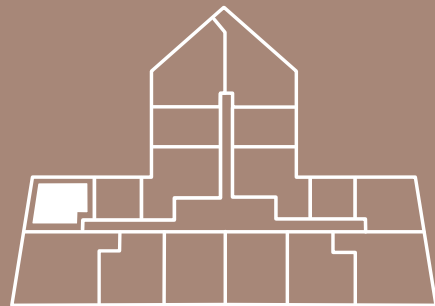


ALHAMBRA PARC

RESIDENCE 16 LEVELS 5-8

2 BED + 2.5 BATH
2 BALCONIES

INTERIOR: 1,677 SQ. FT
BALCONY 1: 132 SQ. FT
BALCONY 2: 71 SQ. FT
TOTAL: 1,880 SQ. FT



The drawings, specifications, dimensions and any other information in these floor plans are conceptual and for illustration purposes only and should not be relied upon. References should be made to the plans and specifications at Builder's office for accurate detailed information of the floor plans including calculation of square footage, dimensions, and other information.





ALHAMBRA PARC

PENTHOUSE 01

3 BED + 3.5 BATH
STUDIO/DEN
3 TERRACES

INTERIOR: 2,801 SQ. FT.
TERRACE 1: 2,127 SQ. FT.
TERRACE 2: 308 SQ. FT.
TERRACE 3: 300 SQ. FT.
TOTAL: 5,536 SQ. FT.



The drawings, specifications, dimensions and any other information in these floor plans are conceptual and for illustration purposes only and should not be relied upon. References should be made to the plans and specifications at Builder's office for accurate detailed information of the floor plans including calculation of square footage, dimensions, and other information.



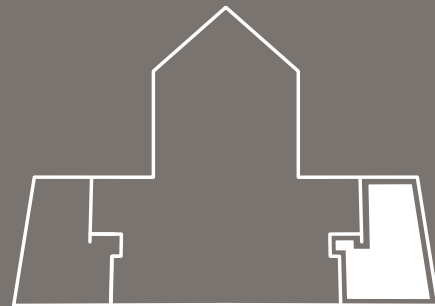


ALHAMBRA PARC

PENTHOUSE 02

3 BED + 3.5 BATH
STUDIO/DEN
3 TERRACES

INTERIOR: 2,801 SQ. FT.
TERRACE 1: 2,127 SQ. FT.
TERRACE 2: 308 SQ. FT.
TERRACE 3: 300 SQ. FT.
TOTAL: 5,536 SQ. FT.



The drawings, specifications, dimensions and any other information in these floor plans are conceptual and for illustration purposes only and should not be relied upon. References should be made to the plans and specifications at Builder's office for accurate detailed information of the floor plans including calculation of square footage, dimensions, and other information.

