



**ST REGIS**  
BAHIA MAR ♦ FORT LAUDERDALE  
THE RESIDENCES

## TOWER 1, RESIDENCE 04

Future residences located at:  
801 Seabreeze Blvd.  
Fort Lauderdale, FL 33316

SRRBahiaMar.com  
954 282 7300

Temporary Sales Gallery:  
1 North Fort Lauderdale Beach Blvd.  
Lobby Level  
Fort Lauderdale, FL 33304



**ORAL REPRESENTATIONS CANNOT BE RELIED UPON AS CORRECTLY STATING REPRESENTATIONS OF THE DEVELOPER. FOR CORRECT REPRESENTATIONS, MAKE REFERENCE TO THIS BROCHURE AND THE DOCUMENTS REQUIRED BY SECTION 718.503, FLORIDA STATUTES, TO BE FURNISHED BY A DEVELOPER TO A BUYER OR LESSEE.**

The St. Regis Residences Bahia Mar Fort Lauderdale, referred to for ease of reference as St Regis Residences is a community of three towers: including Tower 1 of condominium residences developed by PRH/TRR BM Tower 1, LLC; Tower 2 of condominium residences developed by PRH/TRR BM Tower 2, LLC; and Resort Tower 3 which includes a condominium within a portion of a building or within a multiple parcel building developed by PRH/TRR BM Condo, LLC. For ease of reference, PRH/TRR BM Tower 1, LLC, PRH/TRR BM Tower 2, LLC, and PRH/TRR BM Condo, LLC are each a "Developer" and collectively the "Developers." St Regis Residences are not owned, developed, or sold by Marriott International, Inc. or its affiliates ("Marriott"). The Developers use the St. Regis marks under a license from licensor, Marriott, which has not confirmed the accuracy of any of the statements or representations made about the projects by Developers. The Developers each also use the trade names, marks, and logos of the licensor, The Related Group, which licensor is not a Developer of any tower. Artist's conceptual renderings of exterior or site plan and depicting water, marina, surrounding buildings, or landmarks are modified with some surrounding buildings and landmarks omitted. Sketches, renderings, or photographs depicting lifestyle, amenities, food services, resort services, finishes, designs, materials, furnishings, plans, specifications, or art contained in this brochure are proposed only. The St. Regis Residences are developed on a site that is near water, but water access is not guaranteed. No specific view is guaranteed. The associations for each tower will be a part of a master association which will require payment of master association assessments. Some amenities described require payment of fees in addition to regular assessment payments. Consult the Developers' Prospectus for the tower in which you desire to purchase to understand the offering, the amenities, the proposed budgets, terms, conditions, specifications, fees, unit dimensions and size calculation method, site plans, and to learn what is included with the purchase and the payment of regular assessments. The Developers are not residents of the State of New York, and the offerings of Developers are not intended for residents of New York nor any other jurisdiction in which such an offering is prohibited. 2024 © by PRH/TRR BM Tower 1, LLC, PRH/TRR BM Tower 2, LLC, and PRH/TRR BM Condo, LLC, with all rights reserved. 🏡

4 BEDROOMS | 4 BATHROOMS | POWDER ROOM | DEN

INTERIOR: 3,116 SF | 289 SQM EXTERIOR: 1,020 SF | 95 SQM TOTAL: 4,136 SF | 384 SQM



# TOWER 1 RESIDENCE 04

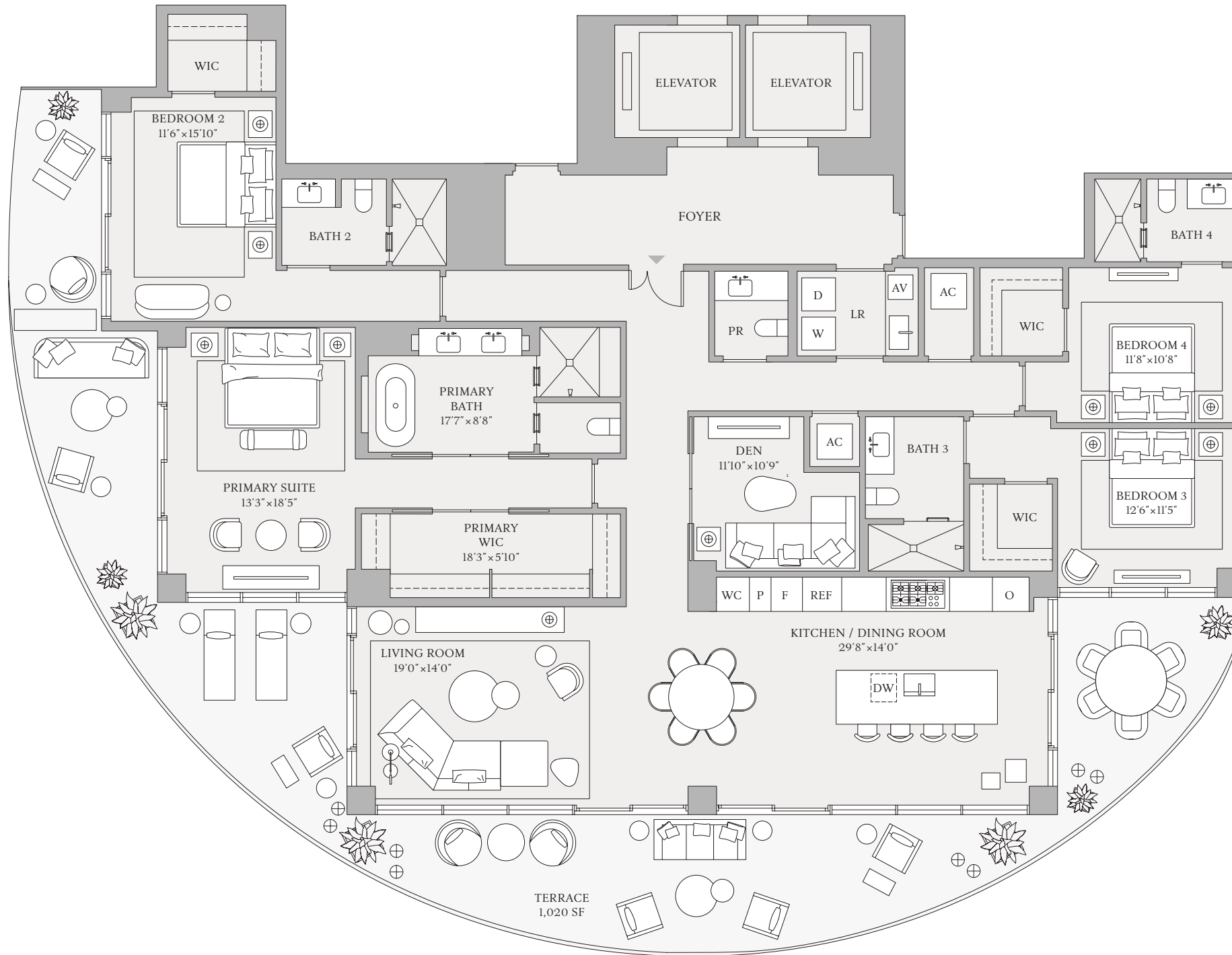
FLOORS 3-23

4 BEDROOMS  
4 BATHROOMS  
POWDER ROOM  
DEN

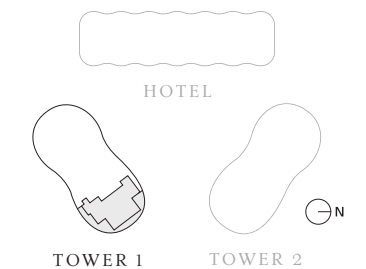
INTERIOR  
3,116 SF | 289 SQM

EXTERIOR  
1,020 SF | 95 SQM

TOTAL  
4,136 SF | 384 SQM



INTRACOASTAL WATERWAY



ATLANTIC OCEAN



The dimensions stated for any depicted unit floor plan are approximate because there are various recognized methods for calculating the square footage of a unit. The square footage stated herein is calculated from the exterior boundaries of the exterior walls to the centerline of interior demising walls without deductions for cutouts, curves, or architectural features. This method results in quoted dimensions greater than the dimensions that would be determined by using other accepted methods. The definition of "Unit" and the calculation method to be relied upon is set forth by the Developer in the Developer's Prospectus. The method set forth in the Developer's Prospectus is another commonly accepted method of calculation, but it will result in a square footage calculation that is less than the method used here. The illustrated layout, locations of windows, doors, closets, plumbing fixtures, mechanical equipment, appliances, structural elements, architectural elements, and the uses, configurations, and entries to rooms are conceptual and may change based on final approved plans, permitting, and completed construction. The illustrated furniture and the uses of space are suggested uses only and are not intended to represent or guarantee any specific use of space or accommodation of specific furnishings. Furnishings, design features, fixtures, and décor illustrated are not included with a unit purchase. Consult the Developer's Prospectus to understand what is offered with the purchase and the calculation of the Unit square footage and dimensions to be relied upon. 2024 © by PRH/TRR BM Condo, LLC, with all rights reserved. ☹



**ST REGIS**  
BAHIA MAR ♦ FORT LAUDERDALE  
THE RESIDENCES

## TOWER 1, RESIDENCE 01

Future residences located at:  
801 Seabreeze Blvd.  
Fort Lauderdale, FL 33316

SRRBahiaMar.com  
954 282 7300

Temporary Sales Gallery:  
1 North Fort Lauderdale Beach Blvd.  
Lobby Level  
Fort Lauderdale, FL 33304



**ORAL REPRESENTATIONS CANNOT BE RELIED UPON AS CORRECTLY STATING REPRESENTATIONS OF THE DEVELOPER. FOR CORRECT REPRESENTATIONS, MAKE REFERENCE TO THIS BROCHURE AND THE DOCUMENTS REQUIRED BY SECTION 718.503, FLORIDA STATUTES, TO BE FURNISHED BY A DEVELOPER TO A BUYER OR LESSEE.**

The St. Regis Residences Bahia Mar Fort Lauderdale, referred to for ease of reference as St Regis Residences is a community of three towers: including Tower 1 of condominium residences developed by PRH/TRR BM Tower 1, LLC; Tower 2 of condominium residences developed by PRH/TRR BM Tower 2, LLC; and Resort Tower 3 which includes a condominium within a portion of a building or within a multiple parcel building developed by PRH/TRR BM Condo, LLC. For ease of reference, PRH/TRR BM Tower 1, LLC, PRH/TRR BM Tower 2, LLC, and PRH/TRR BM Condo, LLC are each a "Developer" and collectively the "Developers." St Regis Residences are not owned, developed, or sold by Marriott International, Inc. or its affiliates ("Marriott"). The Developers use the St. Regis marks under a license from licensor, Marriott, which has not confirmed the accuracy of any of the statements or representations made about the projects by Developers. The Developers each also use the trade names, marks, and logos of the licensor, The Related Group, which licensor is not a Developer of any tower. Artist's conceptual renderings of exterior or site plan and depicting water, marina, surrounding buildings, or landmarks are modified with some surrounding buildings and landmarks omitted. Sketches, renderings, or photographs depicting lifestyle, amenities, food services, resort services, finishes, designs, materials, furnishings, plans, specifications, or art contained in this brochure are proposed only. The St. Regis Residences are developed on a site that is near water, but water access is not guaranteed. No specific view is guaranteed. The associations for each tower will be a part of a master association which will require payment of master association assessments. Some amenities described require payment of fees in addition to regular assessment payments. Consult the Developers' Prospectus for the tower in which you desire to purchase to understand the offering, the amenities, the proposed budgets, terms, conditions, specifications, fees, unit dimensions and size calculation method, site plans, and to learn what is included with the purchase and the payment of regular assessments. The Developers are not residents of the State of New York, and the offerings of Developers are not intended for residents of New York nor any other jurisdiction in which such an offering is prohibited. 2024 © by PRH/TRR BM Tower 1, LLC, PRH/TRR BM Tower 2, LLC, and PRH/TRR BM Condo, LLC, with all rights reserved. 🏠

4 BEDROOMS | 4 BATHROOMS | POWDER ROOM | DEN  
INTERIOR: 3,550 SF | 330 SQM EXTERIOR: 1,286 SF | 119 SQM TOTAL: 4,836 SF | 449 SQM



# TOWER 1 RESIDENCE 01

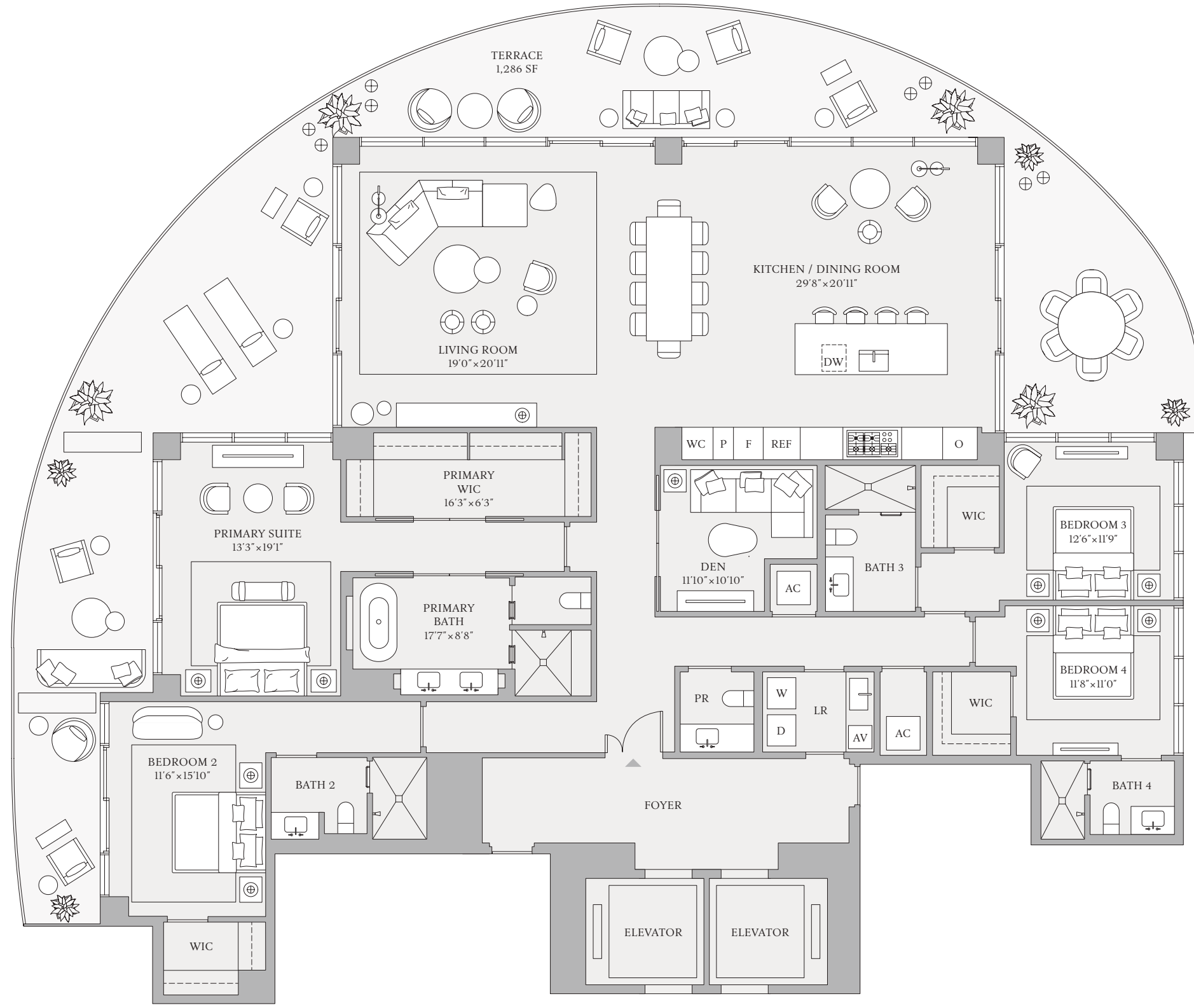
FLOORS 3-23

4 BEDROOMS  
4 BATHROOMS  
POWDER ROOM  
DEN

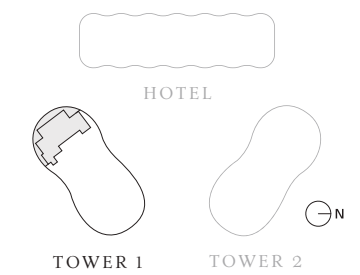
INTERIOR  
3,550 SF | 330 SQM

EXTERIOR  
1,286 SF | 119 SQM

TOTAL  
4,836 SF | 449 SQM



INTRACOASTAL WATERWAY



ATLANTIC OCEAN



The dimensions stated for any depicted unit floor plan are approximate because there are various recognized methods for calculating the square footage of a unit. The square footage stated herein is calculated from the exterior boundaries of the exterior walls to the centerline of interior demising walls without deductions for cutouts, curves, or architectural features. This method results in quoted dimensions greater than the dimensions that would be determined by using other accepted methods. The definition of "Unit" and the calculation method to be relied upon is set forth by the Developer in the Developer's Prospectus. The method set forth in the Developer's Prospectus is another commonly accepted method of calculation, but it will result in a square footage calculation that is less than the method used here. The illustrated layout, locations of windows, doors, closets, plumbing fixtures, mechanical equipment, appliances, structural elements, architectural elements, and the uses, configurations, and entries to rooms are conceptual and may change based on final approved plans, permitting, and completed construction. The illustrated furniture and the uses of space are suggested uses only and are not intended to represent or guarantee any specific use of space or accommodation of specific furnishings. Furnishings, design features, fixtures, and décor illustrated are not included with a unit purchase. Consult the Developer's Prospectus to understand what is offered with the purchase and the calculation of the Unit square footage and dimensions to be relied upon. 2024 © by PRH/TRR BM Condo, LLC, with all rights reserved. ☹



**ST REGIS**  
BAHIA MAR ♦ FORT LAUDERDALE  
THE RESIDENCES

## TOWER 1, RESIDENCE 02

Future residences located at:  
801 Seabreeze Blvd.  
Fort Lauderdale, FL 33316

SRRBahiaMar.com  
954 282 7300

Temporary Sales Gallery:  
1 North Fort Lauderdale Beach Blvd.  
Lobby Level  
Fort Lauderdale, FL 33304



**ORAL REPRESENTATIONS CANNOT BE RELIED UPON AS CORRECTLY STATING REPRESENTATIONS OF THE DEVELOPER. FOR CORRECT REPRESENTATIONS, MAKE REFERENCE TO THIS BROCHURE AND THE DOCUMENTS REQUIRED BY SECTION 718.503, FLORIDA STATUTES, TO BE FURNISHED BY A DEVELOPER TO A BUYER OR LESSEE.**

The St. Regis Residences Bahia Mar Fort Lauderdale, referred to for ease of reference as St Regis Residences is a community of three towers: including Tower 1 of condominium residences developed by PRH/TRR BM Tower 1, LLC; Tower 2 of condominium residences developed by PRH/TRR BM Tower 2, LLC; and Resort Tower 3 which includes a condominium within a portion of a building or within a multiple parcel building developed by PRH/TRR BM Condo, LLC. For ease of reference, PRH/TRR BM Tower 1, LLC, PRH/TRR BM Tower 2, LLC, and PRH/TRR BM Condo, LLC are each a "Developer" and collectively the "Developers." St Regis Residences are not owned, developed, or sold by Marriott International, Inc. or its affiliates ("Marriott"). The Developers use the St. Regis marks under a license from licensor, Marriott, which has not confirmed the accuracy of any of the statements or representations made about the projects by Developers. The Developers each also use the trade names, marks, and logos of the licensor, The Related Group, which licensor is not a Developer of any tower. Artist's conceptual renderings of exterior or site plan and depicting water, marina, surrounding buildings, or landmarks are modified with some surrounding buildings and landmarks omitted. Sketches, renderings, or photographs depicting lifestyle, amenities, food services, resort services, finishes, designs, materials, furnishings, plans, specifications, or art contained in this brochure are proposed only. The St. Regis Residences are developed on a site that is near water, but water access is not guaranteed. No specific view is guaranteed. The associations for each tower will be a part of a master association which will require payment of master association assessments. Some amenities described require payment of fees in addition to regular assessment payments. Consult the Developers' Prospectus for the tower in which you desire to purchase to understand the offering, the amenities, the proposed budgets, terms, conditions, specifications, fees, unit dimensions and size calculation method, site plans, and to learn what is included with the purchase and the payment of regular assessments. The Developers are not residents of the State of New York, and the offerings of Developers are not intended for residents of New York nor any other jurisdiction in which such an offering is prohibited. 2024 © by PRH/TRR BM Tower 1, LLC, PRH/TRR BM Tower 2, LLC, and PRH/TRR BM Condo, LLC, with all rights reserved. 🏠

3 BEDROOMS | 3 BATHROOMS | POWDER ROOM | DEN  
INTERIOR: 2,611 SF | 242 SQM EXTERIOR: 284 SF | 26 SQM TOTAL: 2,895 SF | 268 SQM



# TOWER 1 RESIDENCE 02

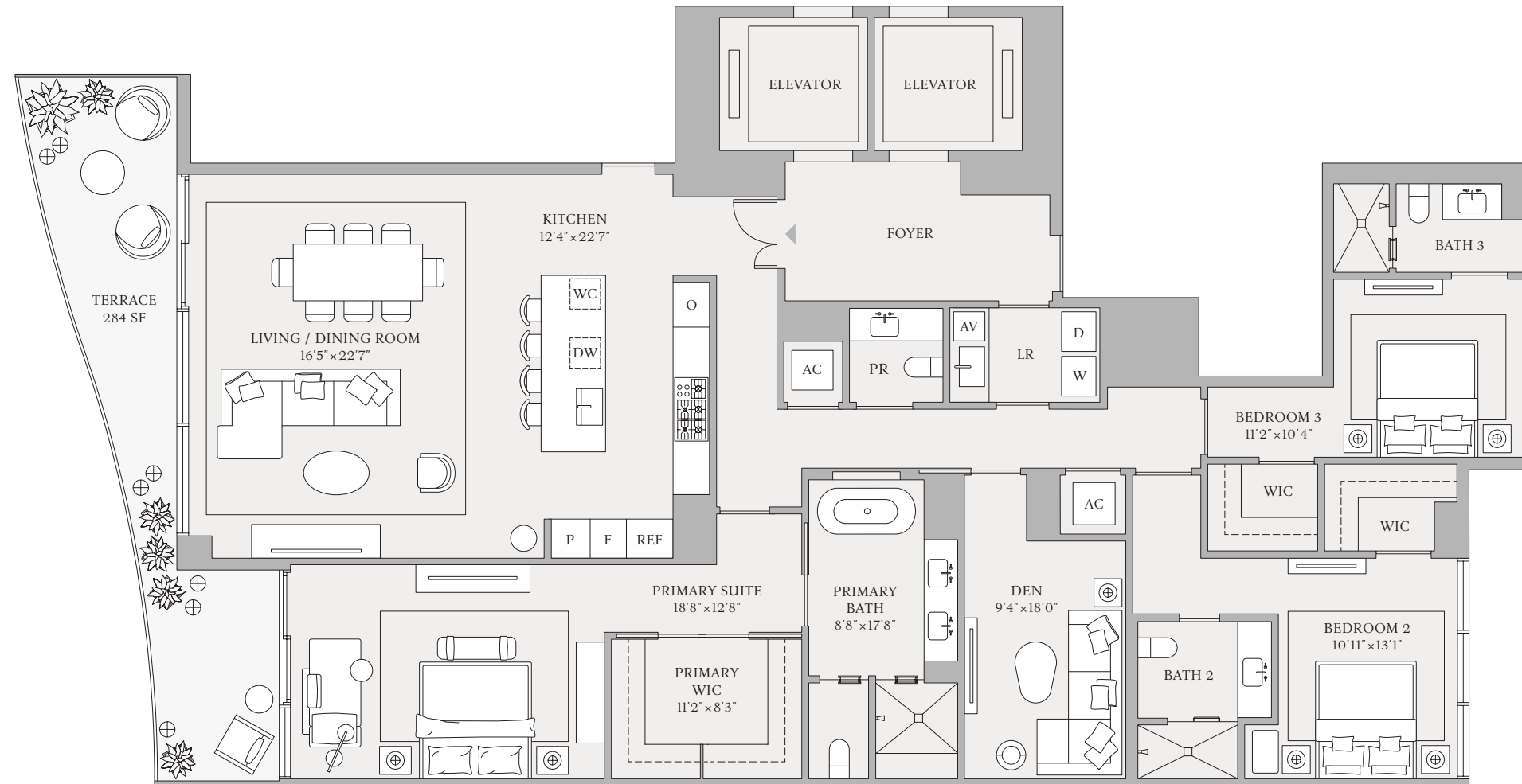
FLOORS 3-23

3 BEDROOMS  
3 BATHROOMS  
POWDER ROOM  
DEN

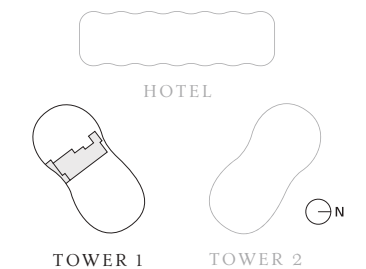
INTERIOR  
2,611 SF | 242 SQM

EXTERIOR  
284 SF | 26 SQM

TOTAL  
2,895 SF | 268 SQM



INTRACOASTAL WATERWAY



ATLANTIC OCEAN



The dimensions stated for any depicted unit floor plan are approximate because there are various recognized methods for calculating the square footage of a unit. The square footage stated herein is calculated from the exterior boundaries of the exterior walls to the centerline of interior demising walls without deductions for cutouts, curves, or architectural features. This method results in quoted dimensions greater than the dimensions that would be determined by using other accepted methods. The definition of "Unit" and the calculation method to be relied upon is set forth by the Developer in the Developer's Prospectus. The method set forth in the Developer's Prospectus is another commonly accepted method of calculation, but it will result in a square footage calculation that is less than the method used here. The illustrated layout, locations of windows, doors, closets, plumbing fixtures, mechanical equipment, appliances, structural elements, architectural elements, and the uses, configurations, and entries to rooms are conceptual and may change based on final approved plans, permitting, and completed construction. The illustrated furniture and the uses of space are suggested uses only and are not intended to represent or guarantee any specific use of space or accommodation of specific furnishings. Furnishings, design features, fixtures, and décor illustrated are not included with a unit purchase. Consult the Developer's Prospectus to understand what is offered with the purchase and the calculation of the Unit square footage and dimensions to be relied upon. 2024 © by PRH/TRR BM Condo, LLC, with all rights reserved. Ⓞ



**ST REGIS**

**BAHIA MAR ♦ FORT LAUDERDALE  
THE RESIDENCES**

## TOWER 1, RESIDENCE 03

Future residences located at:  
801 Seabreeze Blvd.  
Fort Lauderdale, FL 33316

SRRBahiaMar.com  
954 282 7300

Temporary Sales Gallery:  
1 North Fort Lauderdale Beach Blvd.  
Lobby Level  
Fort Lauderdale, FL 33304



**ORAL REPRESENTATIONS CANNOT BE RELIED UPON AS CORRECTLY STATING REPRESENTATIONS OF THE DEVELOPER. FOR CORRECT REPRESENTATIONS, MAKE REFERENCE TO THIS BROCHURE AND THE DOCUMENTS REQUIRED BY SECTION 718.503, FLORIDA STATUTES, TO BE FURNISHED BY A DEVELOPER TO A BUYER OR LESSEE.**

The St. Regis Residences Bahia Mar Fort Lauderdale, referred to for ease of reference as St Regis Residences is a community of three towers: including Tower 1 of condominium residences developed by PRH/TRR BM Tower 1, LLC; Tower 2 of condominium residences developed by PRH/TRR BM Tower 2, LLC; and Resort Tower 3 which includes a condominium within a portion of a building or within a multiple parcel building developed by PRH/TRR BM Condo, LLC. For ease of reference, PRH/TRR BM Tower 1, LLC, PRH/TRR BM Tower 2, LLC, and PRH/TRR BM Condo, LLC are each a "Developer" and collectively the "Developers." St Regis Residences are not owned, developed, or sold by Marriott International, Inc. or its affiliates ("Marriott"). The Developers use the St. Regis marks under a license from licensor, Marriott, which has not confirmed the accuracy of any of the statements or representations made about the projects by Developers. The Developers each also use the trade names, marks, and logos of the licensor, The Related Group, which licensor is not a Developer of any tower. Artist's conceptual renderings of exterior or site plan and depicting water, marina, surrounding buildings, or landmarks are modified with some surrounding buildings and landmarks omitted. Sketches, renderings, or photographs depicting lifestyle, amenities, food services, resort services, finishes, designs, materials, furnishings, plans, specifications, or art contained in this brochure are proposed only. The St. Regis Residences are developed on a site that is near water, but water access is not guaranteed. No specific view is guaranteed. The associations for each tower will be a part of a master association which will require payment of master association assessments. Some amenities described require payment of fees in addition to regular assessment payments. Consult the Developers' Prospectus for the tower in which you desire to purchase to understand the offering, the amenities, the proposed budgets, terms, conditions, specifications, fees, unit dimensions and size calculation method, site plans, and to learn what is included with the purchase and the payment of regular assessments. The Developers are not residents of the State of New York, and the offerings of Developers are not intended for residents of New York nor any other jurisdiction in which such an offering is prohibited. 2024 © by PRH/TRR BM Tower 1, LLC, PRH/TRR BM Tower 2, LLC, and PRH/TRR BM Condo, LLC, with all rights reserved. 🏠

3 BEDROOMS | 3 BATHROOMS | POWDER ROOM | DEN

INTERIOR: 2,611 SF | 242 SQM EXTERIOR: 284 SF | 26 SQM TOTAL: 2,895 SF | 268 SQM



# TOWER 1 RESIDENCE 03

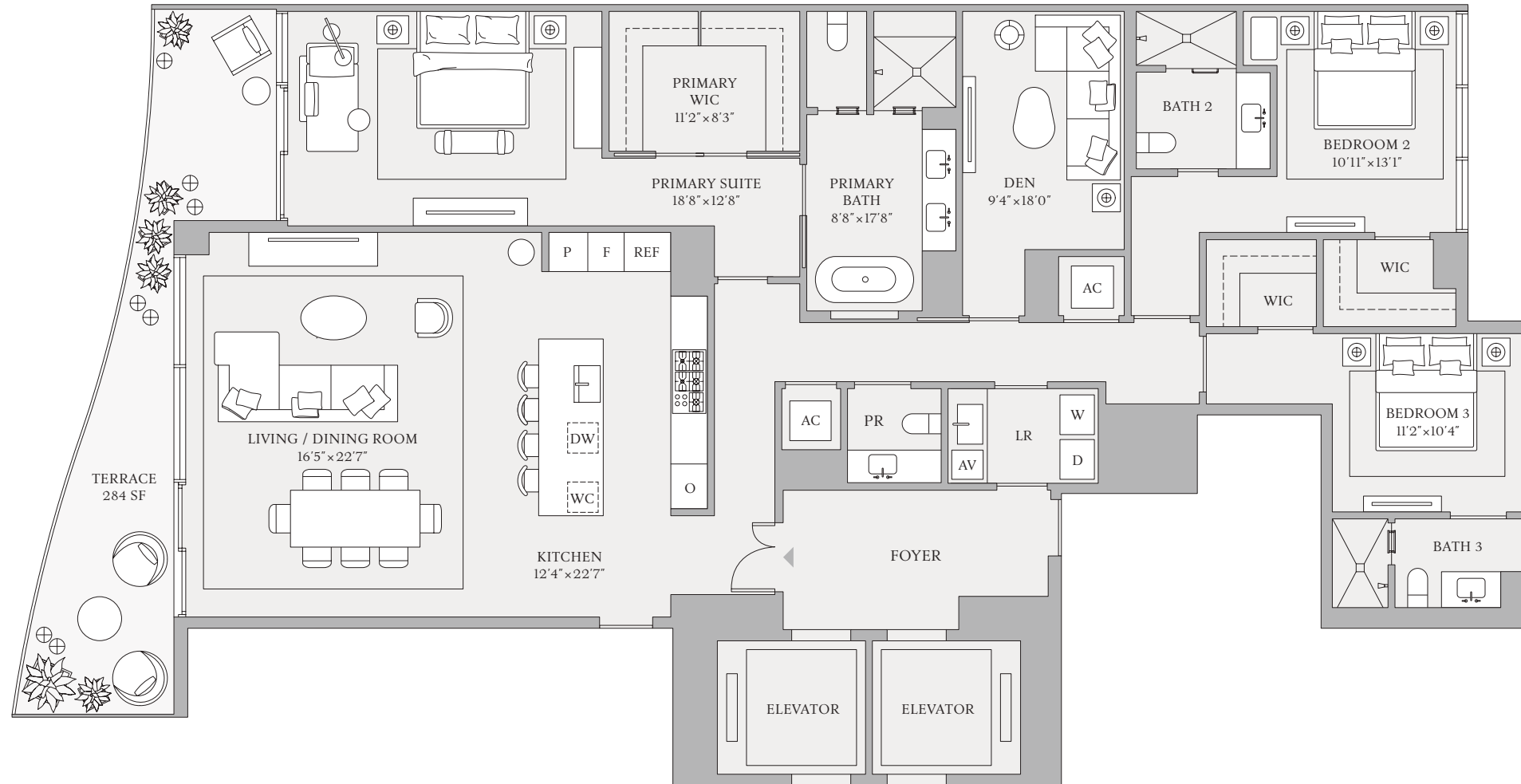
FLOORS 3-23

3 BEDROOMS  
3 BATHROOMS  
POWDER ROOM  
DEN

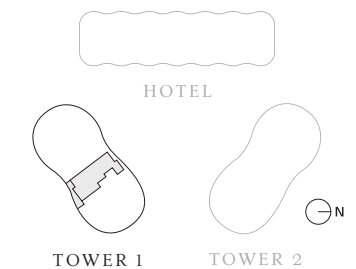
INTERIOR  
2,611 SF | 242 SQM

EXTERIOR  
284 SF | 26 SQM

TOTAL  
2,895 SF | 268 SQM



INTRACOASTAL WATERWAY



ATLANTIC OCEAN



The dimensions stated for any depicted unit floor plan are approximate because there are various recognized methods for calculating the square footage of a unit. The square footage stated herein is calculated from the exterior boundaries of the exterior walls to the centerline of interior demising walls without deductions for cutouts, curves, or architectural features. This method results in quoted dimensions greater than the dimensions that would be determined by using other accepted methods. The definition of "Unit" and the calculation method to be relied upon is set forth by the Developer in the Developer's Prospectus. The method set forth in the Developer's Prospectus is another commonly accepted method of calculation, but it will result in a square footage calculation that is less than the method used here. The illustrated layout, locations of windows, doors, closets, plumbing fixtures, mechanical equipment, appliances, structural elements, architectural elements, and the uses, configurations, and entries to rooms are conceptual and may change based on final approved plans, permitting, and completed construction. The illustrated furniture and the uses of space are suggested uses only and are not intended to represent or guarantee any specific use of space or accommodation of specific furnishings. Furnishings, design features, fixtures, and décor illustrated are not included with a unit purchase. Consult the Developer's Prospectus to understand what is offered with the purchase and the calculation of the Unit square footage and dimensions to be relied upon. 2024 © by PRH/TRR BM Condo, LLC, with all rights reserved. ☞





**ST REGIS**  
 BAHIA MAR ♦ FORT LAUDERDALE  
 THE RESIDENCES

## THE RESORT COLLECTION

RESIDENCE 09, FLOORS 14–18

Future residences located at:  
 801 Seabreeze Blvd.  
 Fort Lauderdale, FL 33316

SRRBahiaMar.com  
 954 282 7300

Temporary Sales Gallery:  
 1 North Fort Lauderdale Beach Blvd.  
 Lobby Level  
 Fort Lauderdale, FL 33304



**ORAL REPRESENTATIONS CANNOT BE RELIED UPON AS CORRECTLY STATING REPRESENTATIONS OF THE DEVELOPER. FOR CORRECT REPRESENTATIONS, MAKE REFERENCE TO THIS BROCHURE AND THE DOCUMENTS REQUIRED BY SECTION 718.503, FLORIDA STATUTES, TO BE FURNISHED BY A DEVELOPER TO A BUYER OR LESSEE.**

The St. Regis Residences Bahia Mar Fort Lauderdale, referred to for ease of reference as St Regis Residences is a community of three towers: including Tower 1 of condominium residences developed by PRH/TRR BM Tower 1, LLC; Tower 2 of condominium residences developed by PRH/TRR BM Tower 2, LLC; and Resort Tower 3 which includes a condominium within a portion of a building or within a multiple parcel building developed by PRH/TRR BM Condo, LLC. For ease of reference, PRH/TRR BM Tower 1, LLC, PRH/TRR BM Tower 2, LLC, and PRH/TRR BM Condo, LLC are each a "Developer" and collectively the "Developers." St Regis Residences are not owned, developed, or sold by Marriott International, Inc. or its affiliates ("Marriott"). The Developers use the St. Regis marks under a license from licensor, Marriott, which has not confirmed the accuracy of any of the statements or representations made about the projects by Developers. The Developers each also use the trade names, marks, and logos of the licensor, The Related Group, which licensor is not a Developer of any tower. Artist's conceptual renderings of exterior or site plan and depicting water, marina, surrounding buildings, or landmarks are modified with some surrounding buildings and landmarks omitted. Sketches, renderings, or photographs depicting lifestyle, amenities, food services, resort services, finishes, designs, materials, furnishings, plans, specifications, or art contained in this brochure are proposed only. The St. Regis Residences are developed on a site that is near water, but water access is not guaranteed. No specific view is guaranteed. The associations for each tower will be a part of a master association which will require payment of master association assessments. Some amenities described require payment of fees in addition to regular assessment payments. Consult the Developers' Prospectus for the tower in which you desire to purchase to understand the offering, the amenities, the proposed budgets, terms, conditions, specifications, fees, unit dimensions and size calculation method, site plans, and to learn what is included with the purchase and the payment of regular assessments. The Developers are not residents of the State of New York, and the offerings of Developers are not intended for residents of New York nor any other jurisdiction in which such an offering is prohibited. 2024 © by PRH/TRR BM Tower 1, LLC, PRH/TRR BM Tower 2, LLC, and PRH/TRR BM Condo, LLC, with all rights reserved. ☎

1 BEDROOM | 1 BATHROOM | POWDER ROOM

INTERIOR: 1,343 SF | 125 SQM EXTERIOR: 267 SF | 25 SQM TOTAL: 1,610 SF | 150 SQM



# THE RESORT COLLECTION

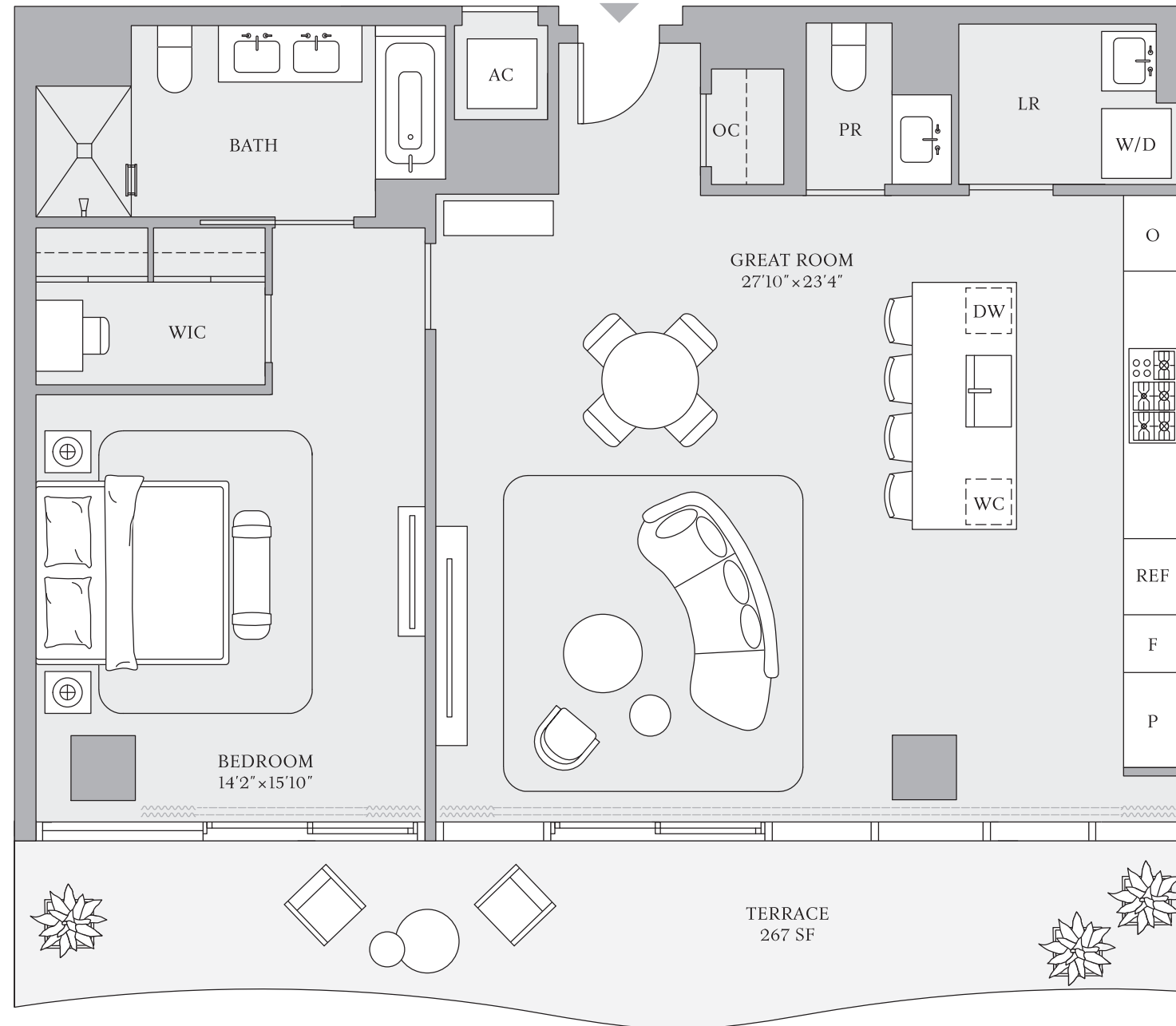
RESIDENCE 09  
FLOORS 14-18

1 BEDROOM  
1 BATHROOM  
POWDER ROOM

INTERIOR  
1,343 SF | 125 SQM

EXTERIOR  
267 SF | 25 SQM

TOTAL  
1,610 SF | 150 SQM



INTRACOASTAL WATERWAY



ATLANTIC OCEAN



FORT LAUDERDALE

The dimensions stated for any depicted unit floor plan are approximate because there are various recognized methods for calculating the square footage of a unit. The square footage stated herein is calculated from the exterior boundaries of the exterior walls to the centerline of interior demising walls without deductions for cutouts, curves, or architectural features. This method results in quoted dimensions greater than the dimensions that would be determined by using other accepted methods. The definition of "Unit" and the calculation method to be relied upon is set forth by the Developer in the Developer's Prospectus. The method set forth in the Developer's Prospectus is another commonly accepted method of calculation, but it will result in a square footage calculation that is less than the method used here. The illustrated layout, locations of windows, doors, closets, plumbing fixtures, mechanical equipment, appliances, structural elements, architectural elements, and the uses, configurations, and entries to rooms are conceptual and may change based on final approved plans, permitting, and completed construction. The illustrated furniture and the uses of space are suggested uses only and are not intended to represent or guarantee any specific use of space or accommodation of specific furnishings. Furnishings, design features, fixtures, and décor illustrated are not included with a unit purchase. Consult the Developer's Prospectus to understand what is offered with the purchase and the calculation of the Unit square footage and dimensions to be relied upon. 2024 © by PRH/TRR BM Condo, LLC, with all rights reserved. ☞



**ST REGIS**  
BAHIA MAR ♦ FORT LAUDERDALE  
THE RESIDENCES

## THE RESORT COLLECTION

RESIDENCE 07, FLOORS 14–16

Future residences located at:  
801 Seabreeze Blvd.  
Fort Lauderdale, FL 33316

SRRBahiaMar.com  
954 282 7300

Temporary Sales Gallery:  
1 North Fort Lauderdale Beach Blvd.  
Lobby Level  
Fort Lauderdale, FL 33304



**ORAL REPRESENTATIONS CANNOT BE RELIED UPON AS CORRECTLY STATING REPRESENTATIONS OF THE DEVELOPER. FOR CORRECT REPRESENTATIONS, MAKE REFERENCE TO THIS BROCHURE AND THE DOCUMENTS REQUIRED BY SECTION 718.503, FLORIDA STATUTES, TO BE FURNISHED BY A DEVELOPER TO A BUYER OR LESSEE.**

The St. Regis Residences Bahia Mar Fort Lauderdale, referred to for ease of reference as St Regis Residences is a community of three towers: including Tower 1 of condominium residences developed by PRH/TRR BM Tower 1, LLC; Tower 2 of condominium residences developed by PRH/TRR BM Tower 2, LLC; and Resort Tower 3 which includes a condominium within a portion of a building or within a multiple parcel building developed by PRH/TRR BM Condo, LLC. For ease of reference, PRH/TRR BM Tower 1, LLC, PRH/TRR BM Tower 2, LLC, and PRH/TRR BM Condo, LLC are each a "Developer" and collectively the "Developers." St Regis Residences are not owned, developed, or sold by Marriott International, Inc. or its affiliates ("Marriott"). The Developers use the St. Regis marks under a license from licensor, Marriott, which has not confirmed the accuracy of any of the statements or representations made about the projects by Developers. The Developers each also use the trade names, marks, and logos of the licensor, The Related Group,® which licensor is not a Developer of any tower. Artist's conceptual renderings of exterior or site plan and depicting water, marina, surrounding buildings, or landmarks are modified with some surrounding buildings and landmarks omitted. Sketches, renderings, or photographs depicting lifestyle, amenities, food services, resort services, finishes, designs, materials, furnishings, plans, specifications, or art contained in this brochure are proposed only. The St. Regis Residences are developed on a site that is near water, but water access is not guaranteed. No specific view is guaranteed. The associations for each tower will be a part of a master association which will require payment of master association assessments. Some amenities described require payment of fees in addition to regular assessment payments. Consult the Developers' Prospectus for the tower in which you desire to purchase to understand the offering, the amenities, the proposed budgets, terms, conditions, specifications, fees, unit dimensions and size calculation method, site plans, and to learn what is included with the purchase and the payment of regular assessments. The Developers are not residents of the State of New York, and the offerings of Developers are not intended for residents of New York nor any other jurisdiction in which such an offering is prohibited. 2024 © by PRH/TRR BM Tower 1, LLC, PRH/TRR BM Tower 2, LLC, and PRH/TRR BM Condo, LLC, with all rights reserved. 🏠

1 BEDROOM | 1 BATHROOM | POWDER ROOM

INTERIOR: 1,160 SF | 108 SQM EXTERIOR: 233 SF | 22 SQM TOTAL: 1,393 SF | 130 SQM



# THE RESORT COLLECTION

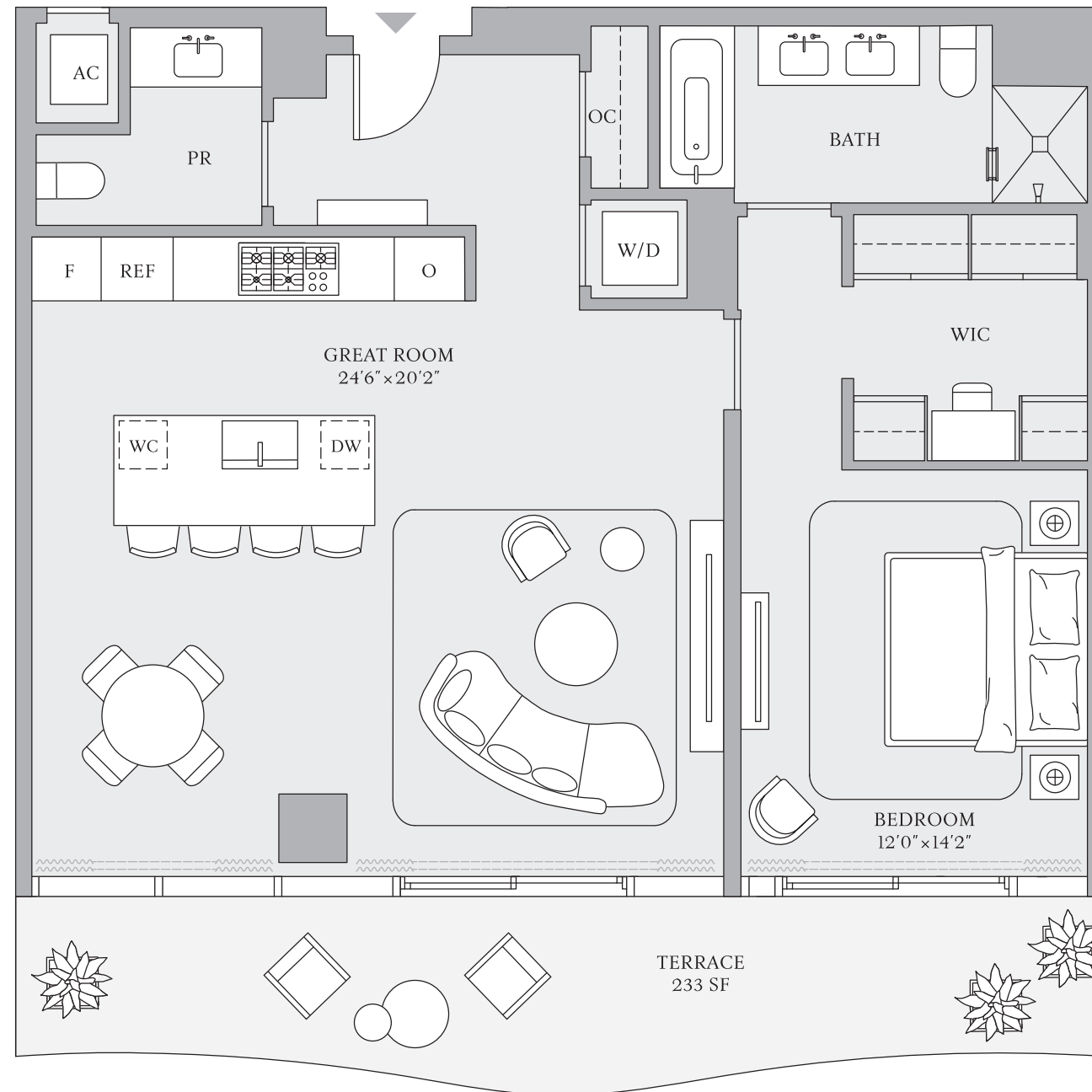
RESIDENCE 07  
FLOORS 14-16

1 BEDROOM  
1 BATHROOM  
POWDER ROOM

INTERIOR  
1,160 SF | 108 SQM

EXTERIOR  
233 SF | 22 SQM

TOTAL  
1,393 SF | 130 SQM



INTRACOASTAL WATERWAY



ATLANTIC OCEAN



The dimensions stated for any depicted unit floor plan are approximate because there are various recognized methods for calculating the square footage of a unit. The square footage stated herein is calculated from the exterior boundaries of the exterior walls to the centerline of interior demising walls without deductions for cutouts, curves, or architectural features. This method results in quoted dimensions greater than the dimensions that would be determined by using other accepted methods. The definition of "Unit" and the calculation method to be relied upon is set forth by the Developer in the Developer's Prospectus. The method set forth in the Developer's Prospectus is another commonly accepted method of calculation, but it will result in a square footage calculation that is less than the method used here. The illustrated layout, locations of windows, doors, closets, plumbing fixtures, mechanical equipment, appliances, structural elements, architectural elements, and the uses, configurations, and entries to rooms are conceptual and may change based on final approved plans, permitting, and completed construction. The illustrated furniture and the uses of space are suggested uses only and are not intended to represent or guarantee any specific use of space or accommodation of specific furnishings. Furnishings, design features, fixtures, and décor illustrated are not included with a unit purchase. Consult the Developer's Prospectus to understand what is offered with the purchase and the calculation of the Unit square footage and dimensions to be relied upon. 2024 © by PRH/TRR BM Condo, LLC, with all rights reserved. ®



**ST REGIS**  
 BAHIA MAR ♦ FORT LAUDERDALE  
 THE RESIDENCES

## THE RESORT COLLECTION

RESIDENCE 09, FLOORS 20–24

Future residences located at:  
 801 Seabreeze Blvd.  
 Fort Lauderdale, FL 33316

SRRBahiaMar.com  
 954 282 7300

Temporary Sales Gallery:  
 1 North Fort Lauderdale Beach Blvd.  
 Lobby Level  
 Fort Lauderdale, FL 33304



**ORAL REPRESENTATIONS CANNOT BE RELIED UPON AS CORRECTLY STATING REPRESENTATIONS OF THE DEVELOPER. FOR CORRECT REPRESENTATIONS, MAKE REFERENCE TO THIS BROCHURE AND THE DOCUMENTS REQUIRED BY SECTION 718.503, FLORIDA STATUTES, TO BE FURNISHED BY A DEVELOPER TO A BUYER OR LESSEE.**

The St. Regis Residences Bahia Mar Fort Lauderdale, referred to for ease of reference as St Regis Residences is a community of three towers: including Tower 1 of condominium residences developed by PRH/TRR BM Tower 1, LLC; Tower 2 of condominium residences developed by PRH/TRR BM Tower 2, LLC; and Resort Tower 3 which includes a condominium within a portion of a building or within a multiple parcel building developed by PRH/TRR BM Condo, LLC. For ease of reference, PRH/TRR BM Tower 1, LLC, PRH/TRR BM Tower 2, LLC, and PRH/TRR BM Condo, LLC are each a "Developer" and collectively the "Developers." St Regis Residences are not owned, developed, or sold by Marriott International, Inc. or its affiliates ("Marriott"). The Developers use the St. Regis marks under a license from licensor, Marriott, which has not confirmed the accuracy of any of the statements or representations made about the projects by Developers. The Developers each also use the trade names, marks, and logos of the licensor, The Related Group, which licensor is not a Developer of any tower. Artist's conceptual renderings of exterior or site plan and depicting water, marina, surrounding buildings, or landmarks are modified with some surrounding buildings and landmarks omitted. Sketches, renderings, or photographs depicting lifestyle, amenities, food services, resort services, finishes, designs, materials, furnishings, plans, specifications, or art contained in this brochure are proposed only. The St. Regis Residences are developed on a site that is near water, but water access is not guaranteed. No specific view is guaranteed. The associations for each tower will be a part of a master association which will require payment of master association assessments. Some amenities described require payment of fees in addition to regular assessment payments. Consult the Developers' Prospectus for the tower in which you desire to purchase to understand the offering, the amenities, the proposed budgets, terms, conditions, specifications, fees, unit dimensions and size calculation method, site plans, and to learn what is included with the purchase and the payment of regular assessments. The Developers are not residents of the State of New York, and the offerings of Developers are not intended for residents of New York nor any other jurisdiction in which such an offering is prohibited. 2024 © by PRH/TRR BM Tower 1, LLC, PRH/TRR BM Tower 2, LLC, and PRH/TRR BM Condo, LLC, with all rights reserved. ☎

2 BEDROOMS | 2 BATHROOMS | POWDER ROOM

INTERIOR: 1,678 SF | 156 SQM EXTERIOR: 344 SF | 32 SQM TOTAL: 2,022 SF | 188 SQM



# THE RESORT COLLECTION

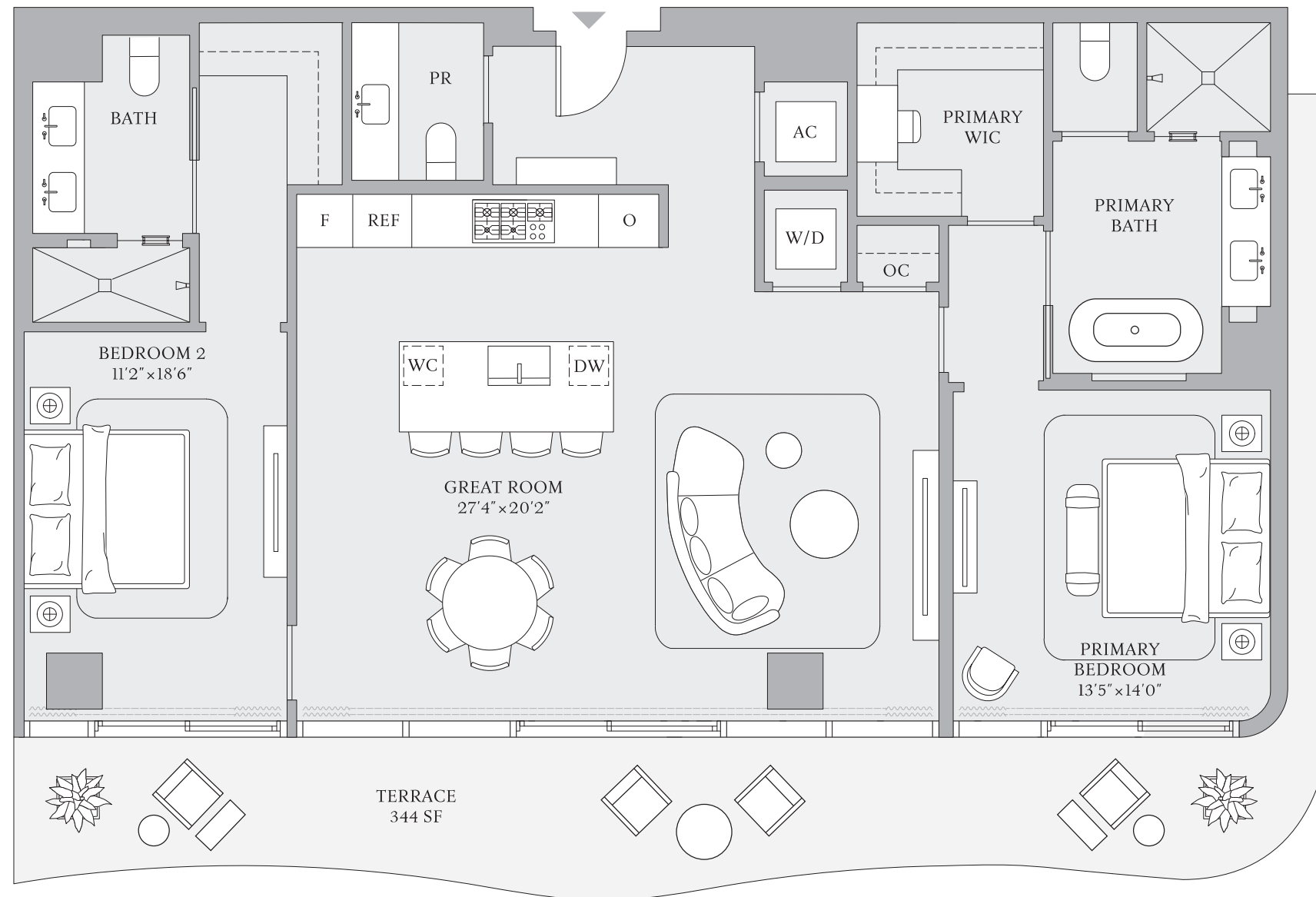
RESIDENCE 09  
FLOORS 20-24

2 BEDROOMS  
2 BATHROOMS  
POWDER ROOM

INTERIOR  
1,678 SF | 156 SQM

EXTERIOR  
344 SF | 32 SQM

TOTAL  
2,022 SF | 188 SQM



INTRACOASTAL WATERWAY



ATLANTIC OCEAN



The dimensions stated for any depicted unit floor plan are approximate because there are various recognized methods for calculating the square footage of a unit. The square footage stated herein is calculated from the exterior boundaries of the exterior walls to the centerline of interior demising walls without deductions for cutouts, curves, or architectural features. This method results in quoted dimensions greater than the dimensions that would be determined by using other accepted methods. The definition of "Unit" and the calculation method to be relied upon is set forth by the Developer in the Developer's Prospectus. The method set forth in the Developer's Prospectus is another commonly accepted method of calculation, but it will result in a square footage calculation that is less than the method used here. The illustrated layout, locations of windows, doors, closets, plumbing fixtures, mechanical equipment, appliances, structural elements, architectural elements, and the uses, configurations, and entries to rooms are conceptual and may change based on final approved plans, permitting, and completed construction. The illustrated furniture and the uses of space are suggested uses only and are not intended to represent or guarantee any specific use of space or accommodation of specific furnishings. Furnishings, design features, fixtures, and décor illustrated are not included with a unit purchase. Consult the Developer's Prospectus to understand what is offered with the purchase and the calculation of the Unit square footage and dimensions to be relied upon. 2024 © by PRH/TRR BM Condo, LLC, with all rights reserved. ®



**ST REGIS**  
 BAHIA MAR ♦ FORT LAUDERDALE  
 THE RESIDENCES

## THE RESORT COLLECTION

RESIDENCES 02 & 05, FLOORS 14–18

Future residences located at:  
 801 Seabreeze Blvd.  
 Fort Lauderdale, FL 33316

SRRBahiaMar.com  
 954 282 7300

Temporary Sales Gallery:  
 1 North Fort Lauderdale Beach Blvd.  
 Lobby Level  
 Fort Lauderdale, FL 33304



**ORAL REPRESENTATIONS CANNOT BE RELIED UPON AS CORRECTLY STATING REPRESENTATIONS OF THE DEVELOPER. FOR CORRECT REPRESENTATIONS, MAKE REFERENCE TO THIS BROCHURE AND THE DOCUMENTS REQUIRED BY SECTION 718.503, FLORIDA STATUTES, TO BE FURNISHED BY A DEVELOPER TO A BUYER OR LESSEE.**

The St. Regis Residences Bahia Mar Fort Lauderdale, referred to for ease of reference as St Regis Residences is a community of three towers: including Tower 1 of condominium residences developed by PRH/TRR BM Tower 1, LLC; Tower 2 of condominium residences developed by PRH/TRR BM Tower 2, LLC; and Resort Tower 3 which includes a condominium within a portion of a building or within a multiple parcel building developed by PRH/TRR BM Condo, LLC. For ease of reference, PRH/TRR BM Tower 1, LLC, PRH/TRR BM Tower 2, LLC, and PRH/TRR BM Condo, LLC are each a "Developer" and collectively the "Developers." St Regis Residences are not owned, developed, or sold by Marriott International, Inc. or its affiliates ("Marriott"). The Developers use the St. Regis marks under a license from licensor, Marriott, which has not confirmed the accuracy of any of the statements or representations made about the projects by Developers. The Developers each also use the trade names, marks, and logos of the licensor, The Related Group, which licensor is not a Developer of any tower. Artist's conceptual renderings of exterior or site plan and depicting water, marina, surrounding buildings, or landmarks are modified with some surrounding buildings and landmarks omitted. Sketches, renderings, or photographs depicting lifestyle, amenities, food services, resort services, finishes, designs, materials, furnishings, plans, specifications, or art contained in this brochure are proposed only. The St. Regis Residences are developed on a site that is near water, but water access is not guaranteed. No specific view is guaranteed. The associations for each tower will be a part of a master association which will require payment of master association assessments. Some amenities described require payment of fees in addition to regular assessment payments. Consult the Developers' Prospectus for the tower in which you desire to purchase to understand the offering, the amenities, the proposed budgets, terms, conditions, specifications, fees, unit dimensions and size calculation method, site plans, and to learn what is included with the purchase and the payment of regular assessments. The Developers are not residents of the State of New York, and the offerings of Developers are not intended for residents of New York nor any other jurisdiction in which such an offering is prohibited. 2024 © by PRH/TRR BM Tower 1, LLC, PRH/TRR BM Tower 2, LLC, and PRH/TRR BM Condo, LLC, with all rights reserved. 🏠

2 BEDROOMS | 2 BATHROOMS | POWDER ROOM  
 INTERIOR: 1,647 SF | 153 SQM EXTERIOR: 333 SF | 31 SQM TOTAL: 1,980 SF | 184 SQM



# THE RESORT COLLECTION

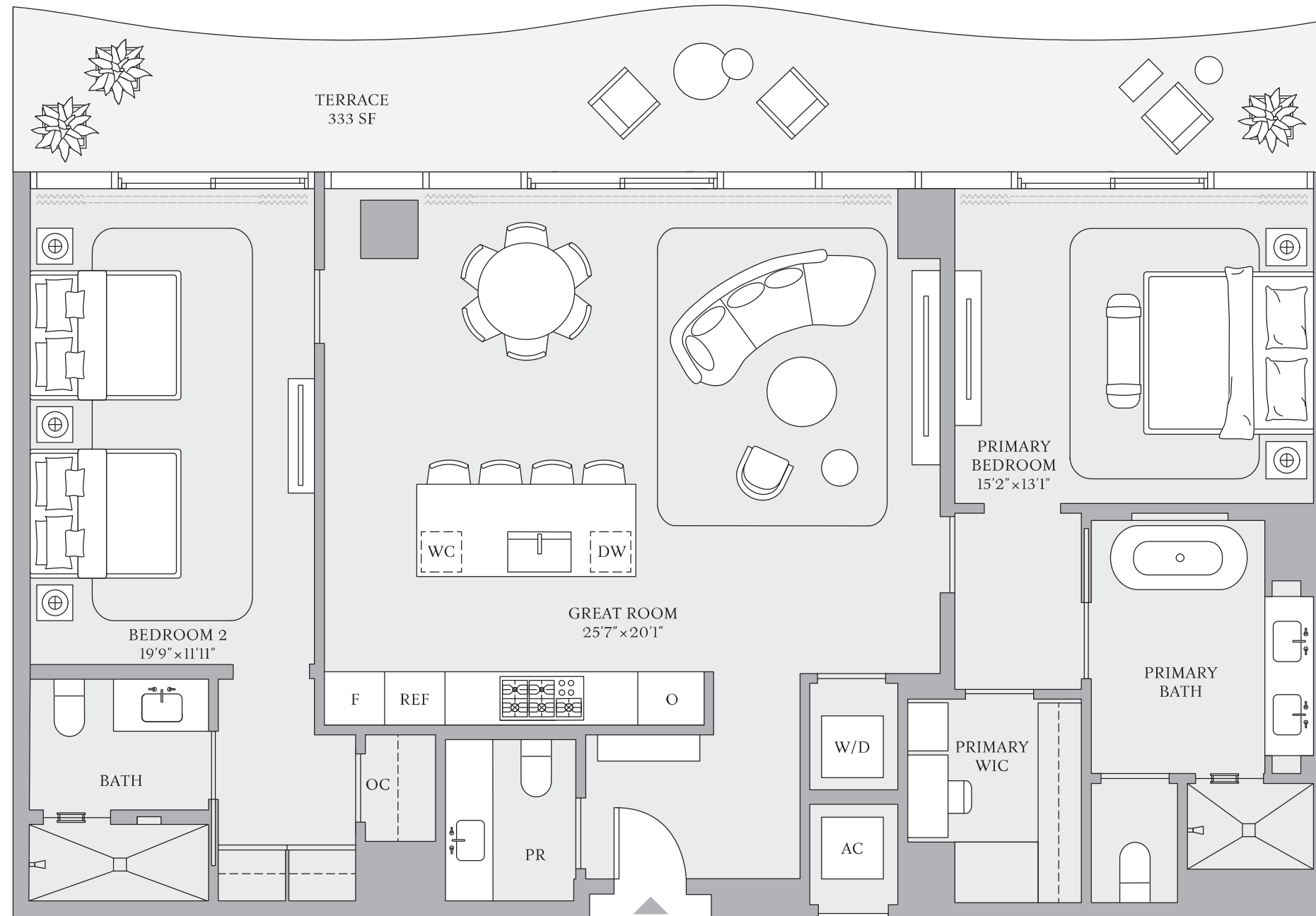
RESIDENCES 02 & 05  
FLOORS 14-18

2 BEDROOMS  
2 BATHROOMS  
POWDER ROOM

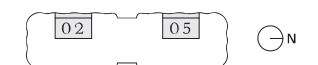
INTERIOR  
1,647 SF | 153 SQM

EXTERIOR  
333 SF | 31 SQM

TOTAL  
1,980 SF | 184 SQM



INTRACOASTAL WATERWAY



ATLANTIC OCEAN



The dimensions stated for any depicted unit floor plan are approximate because there are various recognized methods for calculating the square footage of a unit. The square footage stated herein is calculated from the exterior boundaries of the exterior walls to the centerline of interior demising walls without deductions for cutouts, curves, or architectural features. This method results in quoted dimensions greater than the dimensions that would be determined by using other accepted methods. The definition of "Unit" and the calculation method to be relied upon is set forth by the Developer in the Developer's Prospectus. The method set forth in the Developer's Prospectus is another commonly accepted method of calculation, but it will result in a square footage calculation that is less than the method used here. The illustrated layout, locations of windows, doors, closets, plumbing fixtures, mechanical equipment, appliances, structural elements, architectural elements, and the uses, configurations, and entries to rooms are conceptual and may change based on final approved plans, permitting, and completed construction. The illustrated furniture and the uses of space are suggested uses only and are not intended to represent or guarantee any specific use of space or accommodation of specific furnishings. Furnishings, design features, fixtures, and décor illustrated are not included with a unit purchase. Consult the Developer's Prospectus to understand what is offered with the purchase and the calculation of the Unit square footage and dimensions to be relied upon. 2024 © by PRH/TRR BM Condo, LLC, with all rights reserved. ®





**ST REGIS**  
 BAHIA MAR ♦ FORT LAUDERDALE  
 THE RESIDENCES

## THE RESORT COLLECTION

RESIDENCES 03 & 04, FLOORS 14, 17, 18

Future residences located at:  
 801 Seabreeze Blvd.  
 Fort Lauderdale, FL 33316

SRRBahiaMar.com  
 954 282 7300

Temporary Sales Gallery:  
 1 North Fort Lauderdale Beach Blvd.  
 Lobby Level  
 Fort Lauderdale, FL 33304



**ORAL REPRESENTATIONS CANNOT BE RELIED UPON AS CORRECTLY STATING REPRESENTATIONS OF THE DEVELOPER. FOR CORRECT REPRESENTATIONS, MAKE REFERENCE TO THIS BROCHURE AND THE DOCUMENTS REQUIRED BY SECTION 718.503, FLORIDA STATUTES, TO BE FURNISHED BY A DEVELOPER TO A BUYER OR LESSEE.**

The St. Regis Residences Bahia Mar Fort Lauderdale, referred to for ease of reference as St Regis Residences is a community of three towers: including Tower 1 of condominium residences developed by PRH/TRR BM Tower 1, LLC; Tower 2 of condominium residences developed by PRH/TRR BM Tower 2, LLC; and Resort Tower 3 which includes a condominium within a portion of a building or within a multiple parcel building developed by PRH/TRR BM Condo, LLC. For ease of reference, PRH/TRR BM Tower 1, LLC, PRH/TRR BM Tower 2, LLC, and PRH/TRR BM Condo, LLC are each a "Developer" and collectively the "Developers." St Regis Residences are not owned, developed, or sold by Marriott International, Inc. or its affiliates ("Marriott"). The Developers use the St. Regis marks under a license from licensor, Marriott, which has not confirmed the accuracy of any of the statements or representations made about the projects by Developers. The Developers each also use the trade names, marks, and logos of the licensor, The Related Group, which licensor is not a Developer of any tower. Artist's conceptual renderings of exterior or site plan and depicting water, marina, surrounding buildings, or landmarks are modified with some surrounding buildings and landmarks omitted. Sketches, renderings, or photographs depicting lifestyle, amenities, food services, resort services, finishes, designs, materials, furnishings, plans, specifications, or art contained in this brochure are proposed only. The St. Regis Residences are developed on a site that is near water, but water access is not guaranteed. No specific view is guaranteed. The associations for each tower will be a part of a master association which will require payment of master association assessments. Some amenities described require payment of fees in addition to regular assessment payments. Consult the Developers' Prospectus for the tower in which you desire to purchase to understand the offering, the amenities, the proposed budgets, terms, conditions, specifications, fees, unit dimensions and size calculation method, site plans, and to learn what is included with the purchase and the payment of regular assessments. The Developers are not residents of the State of New York, and the offerings of Developers are not intended for residents of New York nor any other jurisdiction in which such an offering is prohibited. 2024 © by PRH/TRR BM Tower 1, LLC, PRH/TRR BM Tower 2, LLC, and PRH/TRR BM Condo, LLC, with all rights reserved. ☎

2 BEDROOMS | 2 BATHROOMS | POWDER ROOM  
 INTERIOR: 1,551 SF | 144 SQM EXTERIOR: 350 SF | 33 SQM TOTAL: 1,901 SF | 177 SQM



# THE RESORT COLLECTION

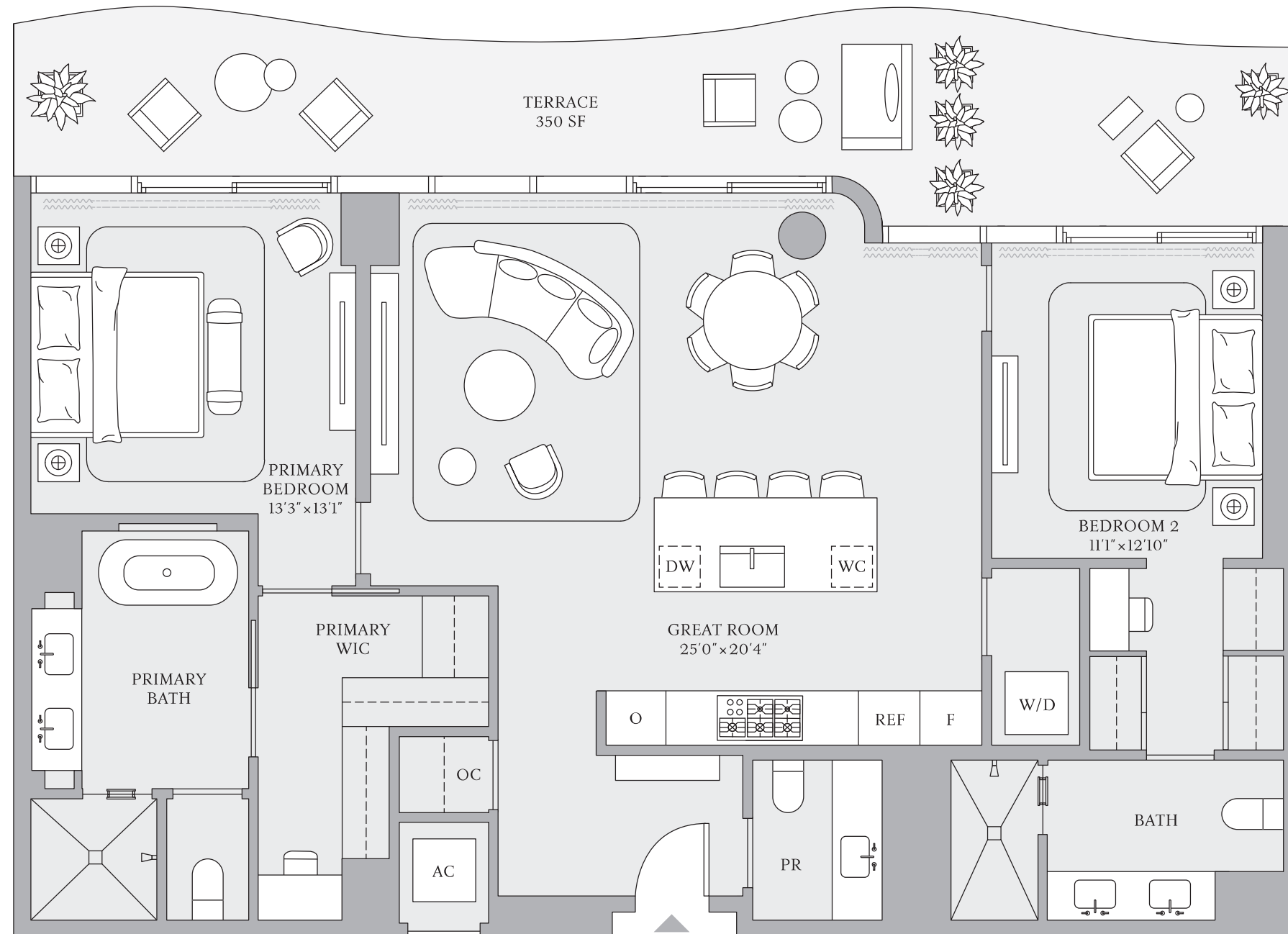
RESIDENCES 03 & 04  
FLOORS 14, 17, 18

2 BEDROOMS  
2 BATHROOMS  
POWDER ROOM

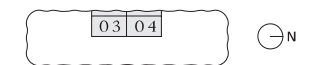
INTERIOR  
1,551 SF | 144 SQM

EXTERIOR  
350 SF | 33 SQM

TOTAL  
1,901 SF | 177 SQM



INTRACOASTAL WATERWAY



ATLANTIC OCEAN



The dimensions stated for any depicted unit floor plan are approximate because there are various recognized methods for calculating the square footage of a unit. The square footage stated herein is calculated from the exterior boundaries of the exterior walls to the centerline of interior demising walls without deductions for cutouts, curves, or architectural features. This method results in quoted dimensions greater than the dimensions that would be determined by using other accepted methods. The definition of "Unit" and the calculation method to be relied upon is set forth by the Developer in the Developer's Prospectus. The method set forth in the Developer's Prospectus is another commonly accepted method of calculation, but it will result in a square footage calculation that is less than the method used here. The illustrated layout, locations of windows, doors, closets, plumbing fixtures, mechanical equipment, appliances, structural elements, architectural elements, and the uses, configurations, and entries to rooms are conceptual and may change based on final approved plans, permitting, and completed construction. The illustrated furniture and the uses of space are suggested uses only and are not intended to represent or guarantee any specific use of space or accommodation of specific furnishings. Furnishings, design features, fixtures, and décor illustrated are not included with a unit purchase. Consult the Developer's Prospectus to understand what is offered with the purchase and the calculation of the Unit square footage and dimensions to be relied upon. 2024 © by PRH/TRR BM Condo, LLC, with all rights reserved. ®



**ST REGIS**  
 BAHIA MAR ♦ FORT LAUDERDALE  
 THE RESIDENCES

## THE RESORT COLLECTION

RESIDENCES 03 & 04, FLOORS 15, 16

Future residences located at:  
 801 Seabreeze Blvd.  
 Fort Lauderdale, FL 33316

SRRBahiaMar.com  
 954 282 7300

Temporary Sales Gallery:  
 1 North Fort Lauderdale Beach Blvd.  
 Lobby Level  
 Fort Lauderdale, FL 33304



**ORAL REPRESENTATIONS CANNOT BE RELIED UPON AS CORRECTLY STATING REPRESENTATIONS OF THE DEVELOPER. FOR CORRECT REPRESENTATIONS, MAKE REFERENCE TO THIS BROCHURE AND THE DOCUMENTS REQUIRED BY SECTION 718.503, FLORIDA STATUTES, TO BE FURNISHED BY A DEVELOPER TO A BUYER OR LESSEE.**

The St. Regis Residences Bahia Mar Fort Lauderdale, referred to for ease of reference as St Regis Residences is a community of three towers: including Tower 1 of condominium residences developed by PRH/TRR BM Tower 1, LLC; Tower 2 of condominium residences developed by PRH/TRR BM Tower 2, LLC; and Resort Tower 3 which includes a condominium within a portion of a building or within a multiple parcel building developed by PRH/TRR BM Condo, LLC. For ease of reference, PRH/TRR BM Tower 1, LLC, PRH/TRR BM Tower 2, LLC, and PRH/TRR BM Condo, LLC are each a "Developer" and collectively the "Developers." St Regis Residences are not owned, developed, or sold by Marriott International, Inc. or its affiliates ("Marriott"). The Developers use the St. Regis marks under a license from licensor, Marriott, which has not confirmed the accuracy of any of the statements or representations made about the projects by Developers. The Developers each also use the trade names, marks, and logos of the licensor, The Related Group, which licensor is not a Developer of any tower. Artist's conceptual renderings of exterior or site plan and depicting water, marina, surrounding buildings, or landmarks are modified with some surrounding buildings and landmarks omitted. Sketches, renderings, or photographs depicting lifestyle, amenities, food services, resort services, finishes, designs, materials, furnishings, plans, specifications, or art contained in this brochure are proposed only. The St. Regis Residences are developed on a site that is near water, but water access is not guaranteed. No specific view is guaranteed. The associations for each tower will be a part of a master association which will require payment of master association assessments. Some amenities described require payment of fees in addition to regular assessment payments. Consult the Developers' Prospectus for the tower in which you desire to purchase to understand the offering, the amenities, the proposed budgets, terms, conditions, specifications, fees, unit dimensions and size calculation method, site plans, and to learn what is included with the purchase and the payment of regular assessments. The Developers are not residents of the State of New York, and the offerings of Developers are not intended for residents of New York nor any other jurisdiction in which such an offering is prohibited. 2024 © by PRH/TRR BM Tower 1, LLC, PRH/TRR BM Tower 2, LLC, and PRH/TRR BM Condo, LLC, with all rights reserved. ☎

2 BEDROOMS | 2 BATHROOMS | POWDER ROOM

INTERIOR: 1,551 SF | 144 SQM EXTERIOR: 229 SF | 21 SQM TOTAL: 1,780 SF | 165 SQM



# THE RESORT COLLECTION

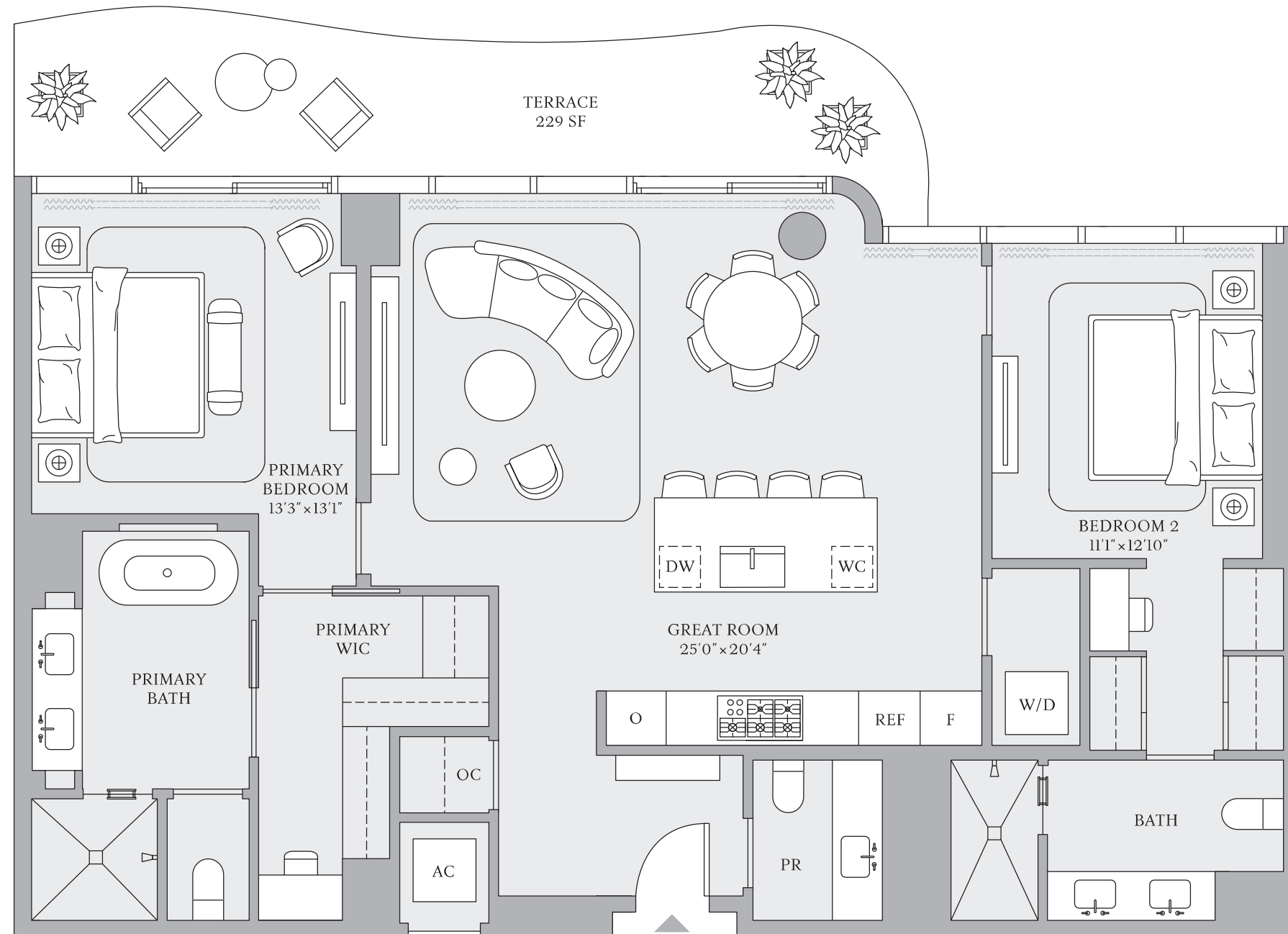
RESIDENCES 03 & 04  
FLOORS 15, 16

2 BEDROOMS  
2 BATHROOMS  
POWDER ROOM

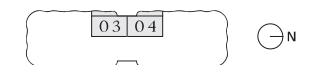
INTERIOR  
1,551 SF | 144 SQM

EXTERIOR  
229 SF | 21 SQM

TOTAL  
1,780 SF | 165 SQM



INTRACOASTAL WATERWAY



ATLANTIC OCEAN



FORT LAUDERDALE

The dimensions stated for any depicted unit floor plan are approximate because there are various recognized methods for calculating the square footage of a unit. The square footage stated herein is calculated from the exterior boundaries of the exterior walls to the centerline of interior demising walls without deductions for cutouts, curves, or architectural features. This method results in quoted dimensions greater than the dimensions that would be determined by using other accepted methods. The definition of "Unit" and the calculation method to be relied upon is set forth by the Developer in the Developer's Prospectus. The method set forth in the Developer's Prospectus is another commonly accepted method of calculation, but it will result in a square footage calculation that is less than the method used here. The illustrated layout, locations of windows, doors, closets, plumbing fixtures, mechanical equipment, appliances, structural elements, architectural elements, and the uses, configurations, and entries to rooms are conceptual and may change based on final approved plans, permitting, and completed construction. The illustrated furniture and the uses of space are suggested uses only and are not intended to represent or guarantee any specific use of space or accommodation of specific furnishings. Furnishings, design features, fixtures, and décor illustrated are not included with a unit purchase. Consult the Developer's Prospectus to understand what is offered with the purchase and the calculation of the Unit square footage and dimensions to be relied upon. 2024 © by PRH/TRR BM Condo, LLC, with all rights reserved. ®



**ST REGIS**  
 BAHIA MAR ♦ FORT LAUDERDALE  
 THE RESIDENCES

## THE RESORT COLLECTION

RESIDENCE 07, FLOOR 19

Future residences located at:  
 801 Seabreeze Blvd.  
 Fort Lauderdale, FL 33316

SRRBahiaMar.com  
 954 282 7300

Temporary Sales Gallery:  
 1 North Fort Lauderdale Beach Blvd.  
 Lobby Level  
 Fort Lauderdale, FL 33304



**ORAL REPRESENTATIONS CANNOT BE RELIED UPON AS CORRECTLY STATING REPRESENTATIONS OF THE DEVELOPER. FOR CORRECT REPRESENTATIONS, MAKE REFERENCE TO THIS BROCHURE AND THE DOCUMENTS REQUIRED BY SECTION 718.503, FLORIDA STATUTES, TO BE FURNISHED BY A DEVELOPER TO A BUYER OR LESSEE.**

The St. Regis Residences Bahia Mar Fort Lauderdale, referred to for ease of reference as St Regis Residences is a community of three towers: including Tower 1 of condominium residences developed by PRH/TRR BM Tower 1, LLC; Tower 2 of condominium residences developed by PRH/TRR BM Tower 2, LLC; and Resort Tower 3 which includes a condominium within a portion of a building or within a multiple parcel building developed by PRH/TRR BM Condo, LLC. For ease of reference, PRH/TRR BM Tower 1, LLC, PRH/TRR BM Tower 2, LLC, and PRH/TRR BM Condo, LLC are each a "Developer" and collectively the "Developers." St Regis Residences are not owned, developed, or sold by Marriott International, Inc. or its affiliates ("Marriott"). The Developers use the St. Regis marks under a license from licensor, Marriott, which has not confirmed the accuracy of any of the statements or representations made about the projects by Developers. The Developers each also use the trade names, marks, and logos of the licensor, The Related Group, which licensor is not a Developer of any tower. Artist's conceptual renderings of exterior or site plan and depicting water, marina, surrounding buildings, or landmarks are modified with some surrounding buildings and landmarks omitted. Sketches, renderings, or photographs depicting lifestyle, amenities, food services, resort services, finishes, designs, materials, furnishings, plans, specifications, or art contained in this brochure are proposed only. The St. Regis Residences are developed on a site that is near water, but water access is not guaranteed. No specific view is guaranteed. The associations for each tower will be a part of a master association which will require payment of master association assessments. Some amenities described require payment of fees in addition to regular assessment payments. Consult the Developers' Prospectus for the tower in which you desire to purchase to understand the offering, the amenities, the proposed budgets, terms, conditions, specifications, fees, unit dimensions and size calculation method, site plans, and to learn what is included with the purchase and the payment of regular assessments. The Developers are not residents of the State of New York, and the offerings of Developers are not intended for residents of New York nor any other jurisdiction in which such an offering is prohibited. 2024 © by PRH/TRR BM Tower 1, LLC, PRH/TRR BM Tower 2, LLC, and PRH/TRR BM Condo, LLC, with all rights reserved. ☎

2 BEDROOMS | 2 BATHROOMS | POWDER ROOM

INTERIOR: 1,737 SF | 161 SQM EXTERIOR: 916 SF | 85 SQM TOTAL: 2,653 SF | 246 SQM



# THE RESORT COLLECTION

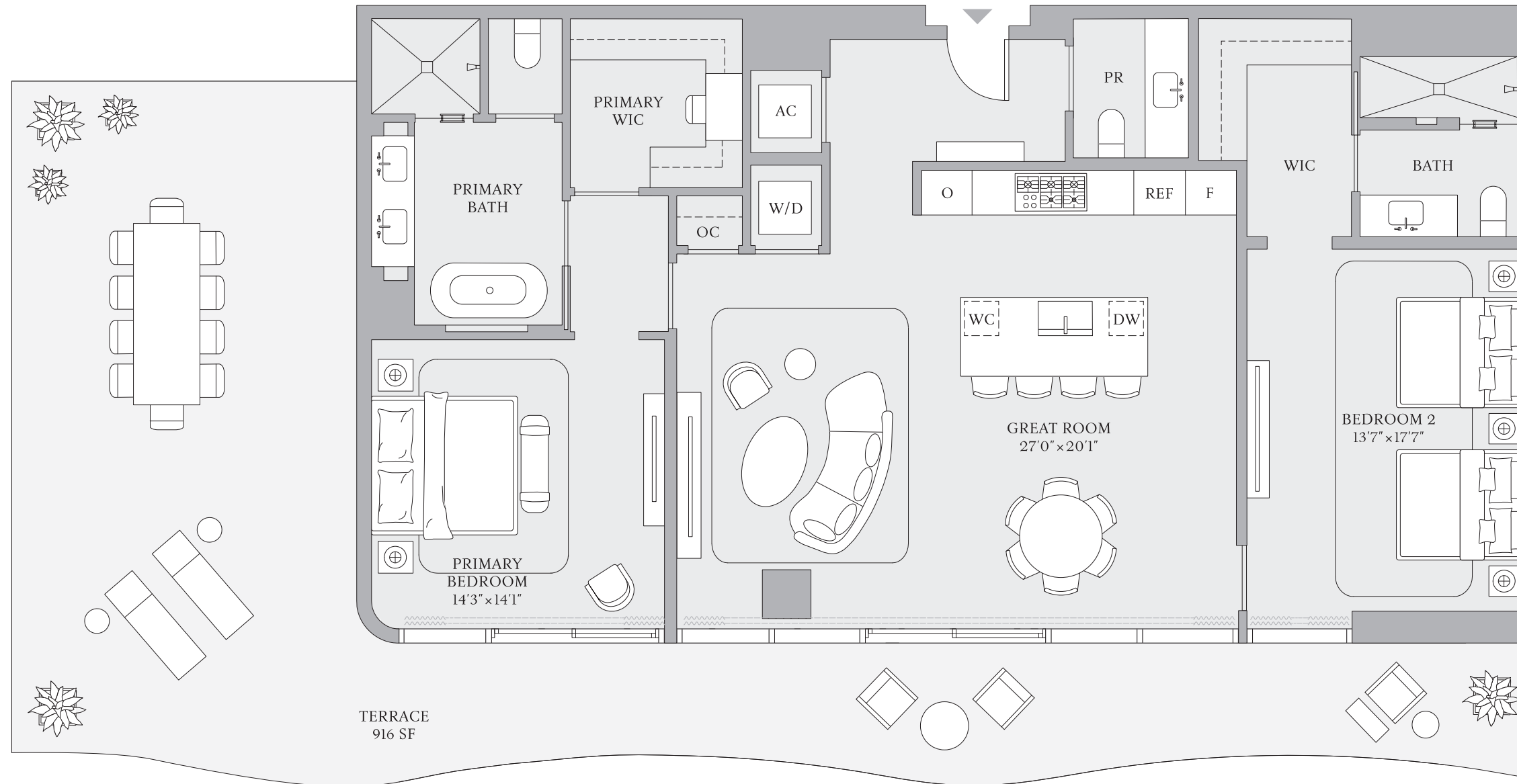
RESIDENCE 07  
FLOOR 19

2 BEDROOMS  
2 BATHROOMS  
POWDER ROOM

INTERIOR  
1,737 SF | 161 SQM

EXTERIOR  
916 SF | 85 SQM

TOTAL  
2,653 SF | 246 SQM



INTRACOASTAL WATERWAY



ATLANTIC OCEAN

The dimensions stated for any depicted unit floor plan are approximate because there are various recognized methods for calculating the square footage of a unit. The square footage stated herein is calculated from the exterior boundaries of the exterior walls to the centerline of interior demising walls without deductions for cutouts, curves, or architectural features. This method results in quoted dimensions greater than the dimensions that would be determined by using other accepted methods. The definition of "Unit" and the calculation method to be relied upon is set forth by the Developer in the Developer's Prospectus. The method set forth in the Developer's Prospectus is another commonly accepted method of calculation, but it will result in a square footage calculation that is less than the method used here. The illustrated layout, locations of windows, doors, closets, plumbing fixtures, mechanical equipment, appliances, structural elements, architectural elements, and the uses, configurations, and entries to rooms are conceptual and may change based on final approved plans, permitting, and completed construction. The illustrated furniture and the uses of space are suggested uses only and are not intended to represent or guarantee any specific use of space or accommodation of specific furnishings. Furnishings, design features, fixtures, and décor illustrated are not included with a unit purchase. Consult the Developer's Prospectus to understand what is offered with the purchase and the calculation of the Unit square footage and dimensions to be relied upon. 2024 © by PRH/TRR BM Condo, LLC, with all rights reserved. ®





**ST REGIS**  
BAHIA MAR ♦ FORT LAUDERDALE  
THE RESIDENCES

## THE RESORT COLLECTION

RESIDENCE 07, FLOORS 20–24

Future residences located at:  
801 Seabreeze Blvd.  
Fort Lauderdale, FL 33316

SRRBahiaMar.com  
954 282 7300

Temporary Sales Gallery:  
1 North Fort Lauderdale Beach Blvd.  
Lobby Level  
Fort Lauderdale, FL 33304



**ORAL REPRESENTATIONS CANNOT BE RELIED UPON AS CORRECTLY STATING REPRESENTATIONS OF THE DEVELOPER. FOR CORRECT REPRESENTATIONS, MAKE REFERENCE TO THIS BROCHURE AND THE DOCUMENTS REQUIRED BY SECTION 718.503, FLORIDA STATUTES, TO BE FURNISHED BY A DEVELOPER TO A BUYER OR LESSEE.**

The St. Regis Residences Bahia Mar Fort Lauderdale, referred to for ease of reference as St Regis Residences is a community of three towers: including Tower 1 of condominium residences developed by PRH/TRR BM Tower 1, LLC; Tower 2 of condominium residences developed by PRH/TRR BM Tower 2, LLC; and Resort Tower 3 which includes a condominium within a portion of a building or within a multiple parcel building developed by PRH/TRR BM Condo, LLC. For ease of reference, PRH/TRR BM Tower 1, LLC, PRH/TRR BM Tower 2, LLC, and PRH/TRR BM Condo, LLC are each a "Developer" and collectively the "Developers." St Regis Residences are not owned, developed, or sold by Marriott International, Inc. or its affiliates ("Marriott"). The Developers use the St. Regis marks under a license from licensor, Marriott, which has not confirmed the accuracy of any of the statements or representations made about the projects by Developers. The Developers each also use the trade names, marks, and logos of the licensor, The Related Group, which licensor is not a Developer of any tower. Artist's conceptual renderings of exterior or site plan and depicting water, marina, surrounding buildings, or landmarks are modified with some surrounding buildings and landmarks omitted. Sketches, renderings, or photographs depicting lifestyle, amenities, food services, resort services, finishes, designs, materials, furnishings, plans, specifications, or art contained in this brochure are proposed only. The St. Regis Residences are developed on a site that is near water, but water access is not guaranteed. No specific view is guaranteed. The associations for each tower will be a part of a master association which will require payment of master association assessments. Some amenities described require payment of fees in addition to regular assessment payments. Consult the Developers' Prospectus for the tower in which you desire to purchase to understand the offering, the amenities, the proposed budgets, terms, conditions, specifications, fees, unit dimensions and size calculation method, site plans, and to learn what is included with the purchase and the payment of regular assessments. The Developers are not residents of the State of New York, and the offerings of Developers are not intended for residents of New York nor any other jurisdiction in which such an offering is prohibited. 2024 © by PRH/TRR BM Tower 1, LLC, PRH/TRR BM Tower 2, LLC, and PRH/TRR BM Condo, LLC, with all rights reserved. ☎

2 BEDROOMS | 2 BATHROOMS | POWDER ROOM

INTERIOR: 1,737 SF | 161 SQM EXTERIOR: 370 SF | 34 SQM TOTAL: 2,107 SF | 195 SQM



# THE RESORT COLLECTION

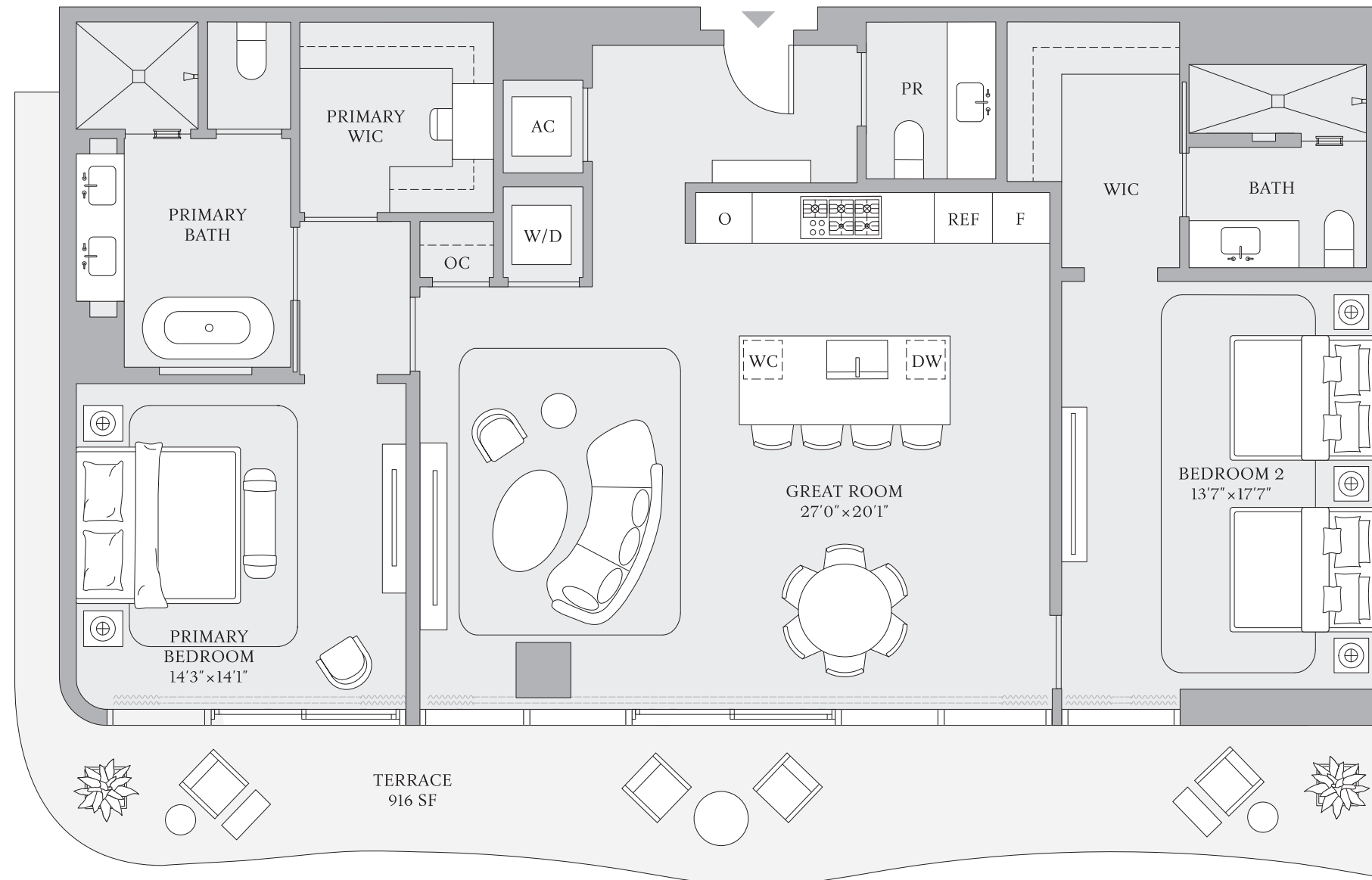
RESIDENCE 07  
FLOORS 20-24

2 BEDROOMS  
2 BATHROOMS  
POWDER ROOM

INTERIOR  
1,737 SF | 161 SQM

EXTERIOR  
370 SF | 34 SQM

TOTAL  
2,107 SF | 195 SQM



INTRACOASTAL WATERWAY



ATLANTIC OCEAN



FORT LAUDERDALE

The dimensions stated for any depicted unit floor plan are approximate because there are various recognized methods for calculating the square footage of a unit. The square footage stated herein is calculated from the exterior boundaries of the exterior walls to the centerline of interior demising walls without deductions for cutouts, curves, or architectural features. This method results in quoted dimensions greater than the dimensions that would be determined by using other accepted methods. The definition of "Unit" and the calculation method to be relied upon is set forth by the Developer in the Developer's Prospectus. The method set forth in the Developer's Prospectus is another commonly accepted method of calculation, but it will result in a square footage calculation that is less than the method used here. The illustrated layout, locations of windows, doors, closets, plumbing fixtures, mechanical equipment, appliances, structural elements, architectural elements, and the uses, configurations, and entries to rooms are conceptual and may change based on final approved plans, permitting, and completed construction. The illustrated furniture and the uses of space are suggested uses only and are not intended to represent or guarantee any specific use of space or accommodation of specific furnishings. Furnishings, design features, fixtures, and décor illustrated are not included with a unit purchase. Consult the Developer's Prospectus to understand what is offered with the purchase and the calculation of the Unit square footage and dimensions to be relied upon. 2024 © by PRH/TRR BM Condo, LLC, with all rights reserved. ®





**ST REGIS**  
BAHIA MAR ♦ FORT LAUDERDALE  
THE RESIDENCES

## THE RESORT COLLECTION

RESIDENCE 08, FLOORS 14, 17, 18

Future residences located at:  
801 Seabreeze Blvd.  
Fort Lauderdale, FL 33316

SRRBahiaMar.com  
954 282 7300

Temporary Sales Gallery:  
1 North Fort Lauderdale Beach Blvd.  
Lobby Level  
Fort Lauderdale, FL 33304



**ORAL REPRESENTATIONS CANNOT BE RELIED UPON AS CORRECTLY STATING REPRESENTATIONS OF THE DEVELOPER. FOR CORRECT REPRESENTATIONS, MAKE REFERENCE TO THIS BROCHURE AND THE DOCUMENTS REQUIRED BY SECTION 718.503, FLORIDA STATUTES, TO BE FURNISHED BY A DEVELOPER TO A BUYER OR LESSEE.**

The St. Regis Residences Bahia Mar Fort Lauderdale, referred to for ease of reference as St Regis Residences is a community of three towers: including Tower 1 of condominium residences developed by PRH/TRR BM Tower 1, LLC; Tower 2 of condominium residences developed by PRH/TRR BM Tower 2, LLC; and Resort Tower 3 which includes a condominium within a portion of a building or within a multiple parcel building developed by PRH/TRR BM Condo, LLC. For ease of reference, PRH/TRR BM Tower 1, LLC, PRH/TRR BM Tower 2, LLC, and PRH/TRR BM Condo, LLC are each a "Developer" and collectively the "Developers." St Regis Residences are not owned, developed, or sold by Marriott International, Inc. or its affiliates ("Marriott"). The Developers use the St. Regis marks under a license from licensor, Marriott, which has not confirmed the accuracy of any of the statements or representations made about the projects by Developers. The Developers each also use the trade names, marks, and logos of the licensor, The Related Group, which licensor is not a Developer of any tower. Artist's conceptual renderings of exterior or site plan and depicting water, marina, surrounding buildings, or landmarks are modified with some surrounding buildings and landmarks omitted. Sketches, renderings, or photographs depicting lifestyle, amenities, food services, resort services, finishes, designs, materials, furnishings, plans, specifications, or art contained in this brochure are proposed only. The St. Regis Residences are developed on a site that is near water, but water access is not guaranteed. No specific view is guaranteed. The associations for each tower will be a part of a master association which will require payment of master association assessments. Some amenities described require payment of fees in addition to regular assessment payments. Consult the Developers' Prospectus for the tower in which you desire to purchase to understand the offering, the amenities, the proposed budgets, terms, conditions, specifications, fees, unit dimensions and size calculation method, site plans, and to learn what is included with the purchase and the payment of regular assessments. The Developers are not residents of the State of New York, and the offerings of Developers are not intended for residents of New York nor any other jurisdiction in which such an offering is prohibited. 2024 © by PRH/TRR BM Tower 1, LLC, PRH/TRR BM Tower 2, LLC, and PRH/TRR BM Condo, LLC, with all rights reserved. ☎

2 BEDROOMS | 2 BATHROOMS | POWDER ROOM

INTERIOR: 1,627 SF | 151 SQM EXTERIOR: 405 SF | 38 SQM TOTAL: 2,032 SF | 189 SQM



# THE RESORT COLLECTION

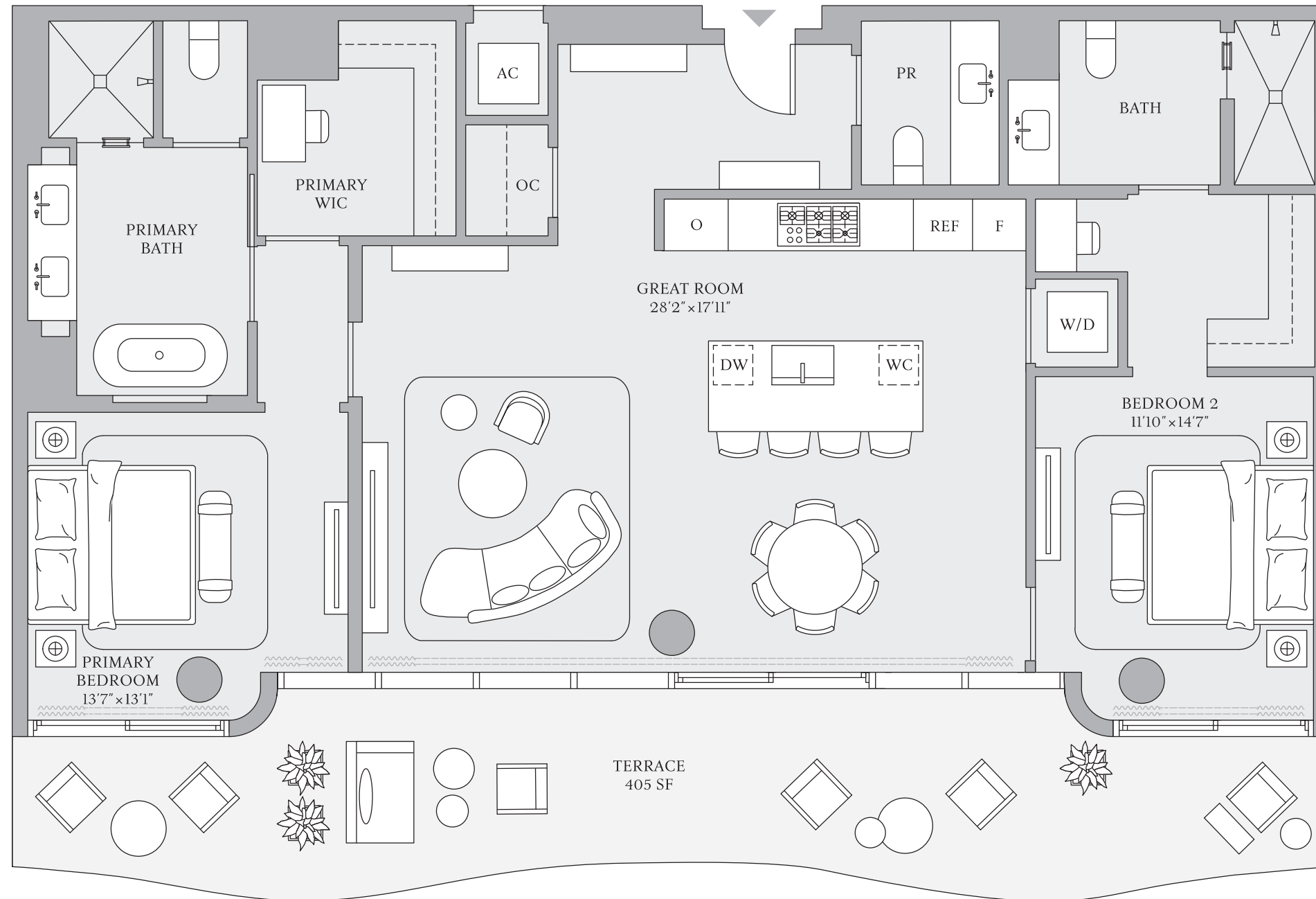
RESIDENCE 08  
FLOORS 14, 17, 18

2 BEDROOMS  
2 BATHROOMS  
POWDER ROOM

INTERIOR  
1,627 SF | 151 SQM

EXTERIOR  
405 SF | 38 SQM

TOTAL  
2,032 SF | 189 SQM



INTRACOASTAL WATERWAY



ATLANTIC OCEAN

The dimensions stated for any depicted unit floor plan are approximate because there are various recognized methods for calculating the square footage of a unit. The square footage stated herein is calculated from the exterior boundaries of the exterior walls to the centerline of interior demising walls without deductions for cutouts, curves, or architectural features. This method results in quoted dimensions greater than the dimensions that would be determined by using other accepted methods. The definition of "Unit" and the calculation method to be relied upon is set forth by the Developer in the Developer's Prospectus. The method set forth in the Developer's Prospectus is another commonly accepted method of calculation, but it will result in a square footage calculation that is less than the method used here. The illustrated layout, locations of windows, doors, closets, plumbing fixtures, mechanical equipment, appliances, structural elements, architectural elements, and the uses, configurations, and entries to rooms are conceptual and may change based on final approved plans, permitting, and completed construction. The illustrated furniture and the uses of space are suggested uses only and are not intended to represent or guarantee any specific use of space or accommodation of specific furnishings. Furnishings, design features, fixtures, and décor illustrated are not included with a unit purchase. Consult the Developer's Prospectus to understand what is offered with the purchase and the calculation of the Unit square footage and dimensions to be relied upon. 2024 © by PRH/TRR BM Condo, LLC, with all rights reserved. ®





**ST REGIS**  
 BAHIA MAR ♦ FORT LAUDERDALE  
 THE RESIDENCES

## THE RESORT COLLECTION

RESIDENCE 08, FLOORS 15, 16

Future residences located at:  
 801 Seabreeze Blvd.  
 Fort Lauderdale, FL 33316

SRRBahiaMar.com  
 954 282 7300

Temporary Sales Gallery:  
 1 North Fort Lauderdale Beach Blvd.  
 Lobby Level  
 Fort Lauderdale, FL 33304



**ORAL REPRESENTATIONS CANNOT BE RELIED UPON AS CORRECTLY STATING REPRESENTATIONS OF THE DEVELOPER. FOR CORRECT REPRESENTATIONS, MAKE REFERENCE TO THIS BROCHURE AND THE DOCUMENTS REQUIRED BY SECTION 718.503, FLORIDA STATUTES, TO BE FURNISHED BY A DEVELOPER TO A BUYER OR LESSEE.**

The St. Regis Residences Bahia Mar Fort Lauderdale, referred to for ease of reference as St Regis Residences is a community of three towers: including Tower 1 of condominium residences developed by PRH/TRR BM Tower 1, LLC; Tower 2 of condominium residences developed by PRH/TRR BM Tower 2, LLC; and Resort Tower 3 which includes a condominium within a portion of a building or within a multiple parcel building developed by PRH/TRR BM Condo, LLC. For ease of reference, PRH/TRR BM Tower 1, LLC, PRH/TRR BM Tower 2, LLC, and PRH/TRR BM Condo, LLC are each a "Developer" and collectively the "Developers." St Regis Residences are not owned, developed, or sold by Marriott International, Inc. or its affiliates ("Marriott"). The Developers use the St. Regis marks under a license from licensor, Marriott, which has not confirmed the accuracy of any of the statements or representations made about the projects by Developers. The Developers each also use the trade names, marks, and logos of the licensor, The Related Group, which licensor is not a Developer of any tower. Artist's conceptual renderings of exterior or site plan and depicting water, marina, surrounding buildings, or landmarks are modified with some surrounding buildings and landmarks omitted. Sketches, renderings, or photographs depicting lifestyle, amenities, food services, resort services, finishes, designs, materials, furnishings, plans, specifications, or art contained in this brochure are proposed only. The St. Regis Residences are developed on a site that is near water, but water access is not guaranteed. No specific view is guaranteed. The associations for each tower will be a part of a master association which will require payment of master association assessments. Some amenities described require payment of fees in addition to regular assessment payments. Consult the Developers' Prospectus for the tower in which you desire to purchase to understand the offering, the amenities, the proposed budgets, terms, conditions, specifications, fees, unit dimensions and size calculation method, site plans, and to learn what is included with the purchase and the payment of regular assessments. The Developers are not residents of the State of New York, and the offerings of Developers are not intended for residents of New York nor any other jurisdiction in which such an offering is prohibited. 2024 © by PRH/TRR BM Tower 1, LLC, PRH/TRR BM Tower 2, LLC, and PRH/TRR BM Condo, LLC, with all rights reserved. ☎

2 BEDROOMS | 2 BATHROOMS | POWDER ROOM

INTERIOR: 1,627 SF | 151 SQM EXTERIOR: 154 SF | 14 SQM TOTAL: 1,781 SF | 165 SQM



# THE RESORT COLLECTION

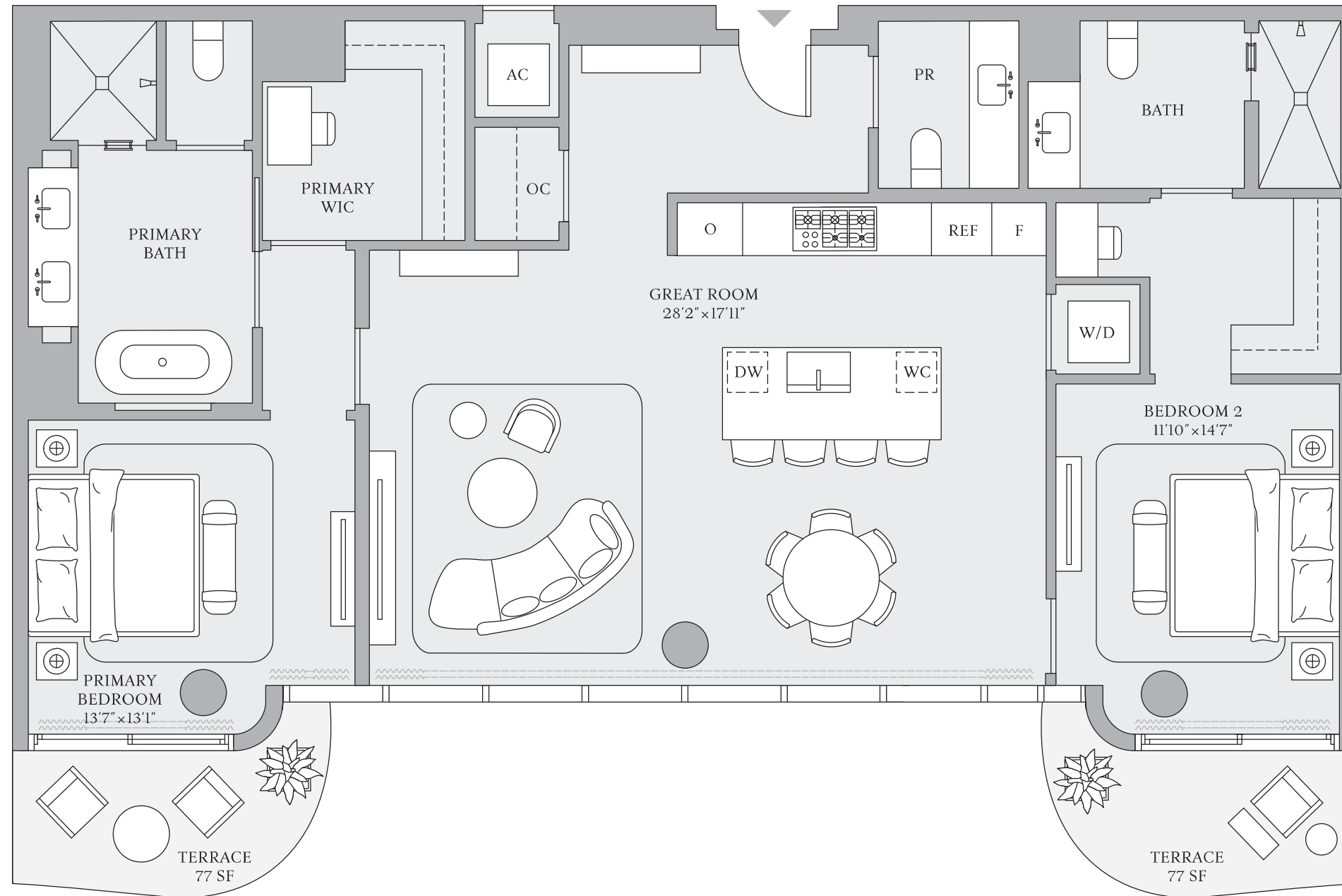
RESIDENCE 08  
FLOORS 15, 16

2 BEDROOMS  
2 BATHROOMS  
POWDER ROOM

INTERIOR  
1,627 SF | 151 SQM

EXTERIOR  
154 SF | 14 SQM

TOTAL  
1,781 SF | 165 SQM



INTRACOASTAL WATERWAY



ATLANTIC OCEAN



FORT LAUDERDALE

The dimensions stated for any depicted unit floor plan are approximate because there are various recognized methods for calculating the square footage of a unit. The square footage stated herein is calculated from the exterior boundaries of the exterior walls to the centerline of interior demising walls without deductions for cutouts, curves, or architectural features. This method results in quoted dimensions greater than the dimensions that would be determined by using other accepted methods. The definition of "Unit" and the calculation method to be relied upon is set forth by the Developer in the Developer's Prospectus. The method set forth in the Developer's Prospectus is another commonly accepted method of calculation, but it will result in a square footage calculation that is less than the method used here. The illustrated layout, locations of windows, doors, closets, plumbing fixtures, mechanical equipment, appliances, structural elements, architectural elements, and the uses, configurations, and entries to rooms are conceptual and may change based on final approved plans, permitting, and completed construction. The illustrated furniture and the uses of space are suggested uses only and are not intended to represent or guarantee any specific use of space or accommodation of specific furnishings. Furnishings, design features, fixtures, and décor illustrated are not included with a unit purchase. Consult the Developer's Prospectus to understand what is offered with the purchase and the calculation of the Unit square footage and dimensions to be relied upon. 2024 © by PRH/TRR BM Condo, LLC, with all rights reserved. ®



**ST REGIS**  
 BAHIA MAR ♦ FORT LAUDERDALE  
 THE RESIDENCES

## THE RESORT COLLECTION

RESIDENCE 09, FLOOR 19

Future residences located at:  
 801 Seabreeze Blvd.  
 Fort Lauderdale, FL 33316

SRRBahiaMar.com  
 954 282 7300

Temporary Sales Gallery:  
 1 North Fort Lauderdale Beach Blvd.  
 Lobby Level  
 Fort Lauderdale, FL 33304



**ORAL REPRESENTATIONS CANNOT BE RELIED UPON AS CORRECTLY STATING REPRESENTATIONS OF THE DEVELOPER. FOR CORRECT REPRESENTATIONS, MAKE REFERENCE TO THIS BROCHURE AND THE DOCUMENTS REQUIRED BY SECTION 718.503, FLORIDA STATUTES, TO BE FURNISHED BY A DEVELOPER TO A BUYER OR LESSEE.**

The St. Regis Residences Bahia Mar Fort Lauderdale, referred to for ease of reference as St Regis Residences is a community of three towers: including Tower 1 of condominium residences developed by PRH/TRR BM Tower 1, LLC; Tower 2 of condominium residences developed by PRH/TRR BM Tower 2, LLC; and Resort Tower 3 which includes a condominium within a portion of a building or within a multiple parcel building developed by PRH/TRR BM Condo, LLC. For ease of reference, PRH/TRR BM Tower 1, LLC, PRH/TRR BM Tower 2, LLC, and PRH/TRR BM Condo, LLC are each a "Developer" and collectively the "Developers." St Regis Residences are not owned, developed, or sold by Marriott International, Inc. or its affiliates ("Marriott"). The Developers use the St. Regis marks under a license from licensor, Marriott, which has not confirmed the accuracy of any of the statements or representations made about the projects by Developers. The Developers each also use the trade names, marks, and logos of the licensor, The Related Group, which licensor is not a Developer of any tower. Artist's conceptual renderings of exterior or site plan and depicting water, marina, surrounding buildings, or landmarks are modified with some surrounding buildings and landmarks omitted. Sketches, renderings, or photographs depicting lifestyle, amenities, food services, resort services, finishes, designs, materials, furnishings, plans, specifications, or art contained in this brochure are proposed only. The St. Regis Residences are developed on a site that is near water, but water access is not guaranteed. No specific view is guaranteed. The associations for each tower will be a part of a master association which will require payment of master association assessments. Some amenities described require payment of fees in addition to regular assessment payments. Consult the Developers' Prospectus for the tower in which you desire to purchase to understand the offering, the amenities, the proposed budgets, terms, conditions, specifications, fees, unit dimensions and size calculation method, site plans, and to learn what is included with the purchase and the payment of regular assessments. The Developers are not residents of the State of New York, and the offerings of Developers are not intended for residents of New York nor any other jurisdiction in which such an offering is prohibited. 2024 © by PRH/TRR BM Tower 1, LLC, PRH/TRR BM Tower 2, LLC, and PRH/TRR BM Condo, LLC, with all rights reserved. ☎

2 BEDROOMS | 2 BATHROOMS | POWDER ROOM

INTERIOR: 1,678 SF | 156 SQM EXTERIOR: 890 SF | 83 SQM TOTAL: 2,568 SF | 239 SQM

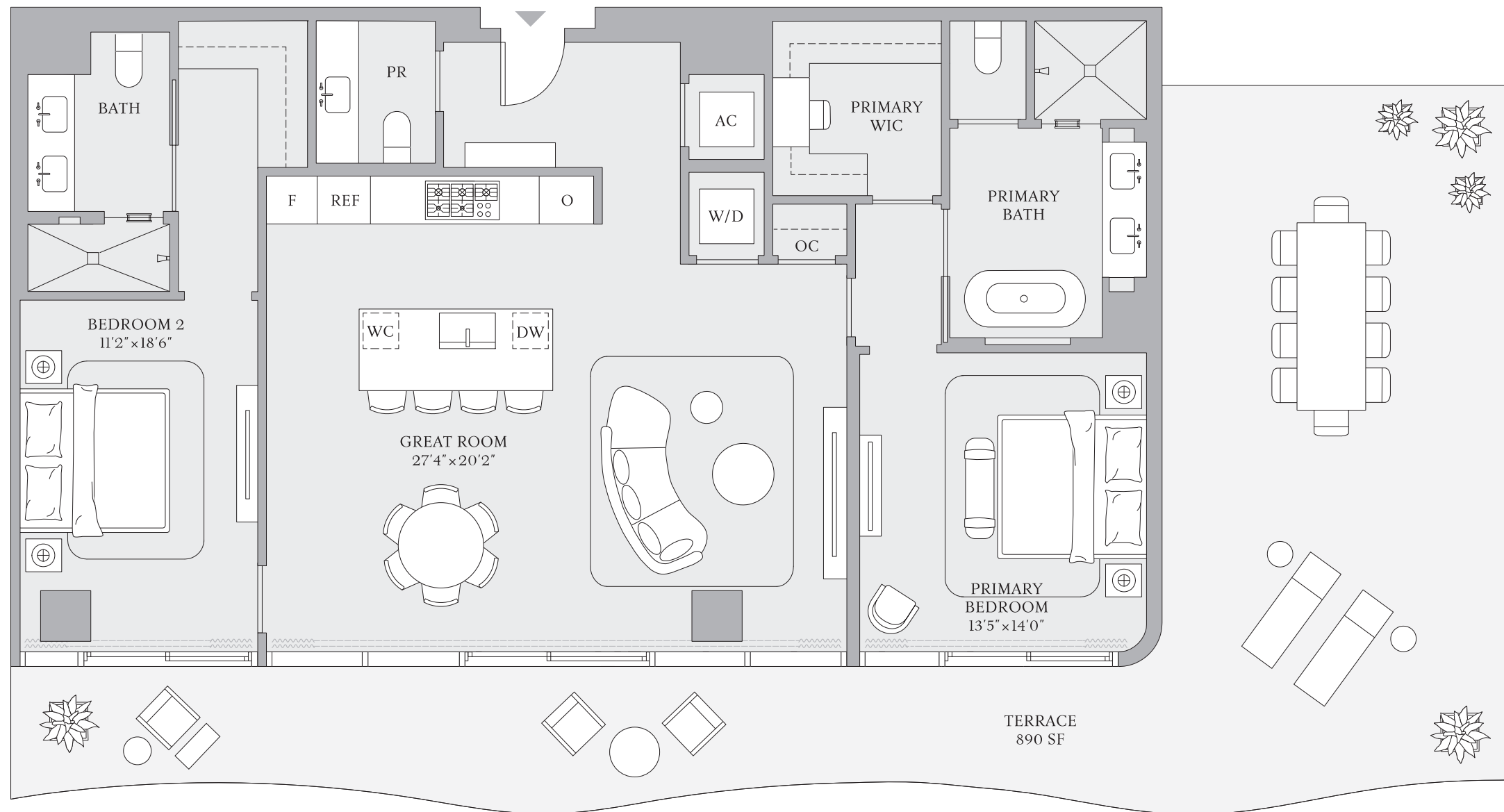


# THE RESORT COLLECTION

RESIDENCE 09  
FLOOR 19

2 BEDROOMS  
2 BATHROOMS  
POWDER ROOM

INTERIOR  
1,678 SF | 156 SQM  
EXTERIOR  
890 SF | 83 SQM  
TOTAL  
2,568 SF | 239 SQM



INTRACOASTAL WATERWAY



ATLANTIC OCEAN

The dimensions stated for any depicted unit floor plan are approximate because there are various recognized methods for calculating the square footage of a unit. The square footage stated herein is calculated from the exterior boundaries of the exterior walls to the centerline of interior demising walls without deductions for cutouts, curves, or architectural features. This method results in quoted dimensions greater than the dimensions that would be determined by using other accepted methods. The definition of "Unit" and the calculation method to be relied upon is set forth by the Developer in the Developer's Prospectus. The method set forth in the Developer's Prospectus is another commonly accepted method of calculation, but it will result in a square footage calculation that is less than the method used here. The illustrated layout, locations of windows, doors, closets, plumbing fixtures, mechanical equipment, appliances, structural elements, architectural elements, and the uses, configurations, and entries to rooms are conceptual and may change based on final approved plans, permitting, and completed construction. The illustrated furniture and the uses of space are suggested uses only and are not intended to represent or guarantee any specific use of space or accommodation of specific furnishings. Furnishings, design features, fixtures, and décor illustrated are not included with a unit purchase. Consult the Developer's Prospectus to understand what is offered with the purchase and the calculation of the Unit square footage and dimensions to be relied upon. 2024 © by PRH/TRR BM Condo, LLC, with all rights reserved. ☞





**ST REGIS**  
 BAHIA MAR ♦ FORT LAUDERDALE  
 THE RESIDENCES

## THE RESORT COLLECTION

RESIDENCES 02 & 05, FLOOR 19

Future residences located at:  
 801 Seabreeze Blvd.  
 Fort Lauderdale, FL 33316

SRRBahiaMar.com  
 954 282 7300

Temporary Sales Gallery:  
 1 North Fort Lauderdale Beach Blvd.  
 Lobby Level  
 Fort Lauderdale, FL 33304



**ORAL REPRESENTATIONS CANNOT BE RELIED UPON AS CORRECTLY STATING REPRESENTATIONS OF THE DEVELOPER. FOR CORRECT REPRESENTATIONS, MAKE REFERENCE TO THIS BROCHURE AND THE DOCUMENTS REQUIRED BY SECTION 718.503, FLORIDA STATUTES, TO BE FURNISHED BY A DEVELOPER TO A BUYER OR LESSEE.**

The St. Regis Residences Bahia Mar Fort Lauderdale, referred to for ease of reference as St Regis Residences is a community of three towers: including Tower 1 of condominium residences developed by PRH/TRR BM Tower 1, LLC; Tower 2 of condominium residences developed by PRH/TRR BM Tower 2, LLC; and Resort Tower 3 which includes a condominium within a portion of a building or within a multiple parcel building developed by PRH/TRR BM Condo, LLC. For ease of reference, PRH/TRR BM Tower 1, LLC, PRH/TRR BM Tower 2, LLC, and PRH/TRR BM Condo, LLC are each a "Developer" and collectively the "Developers." St Regis Residences are not owned, developed, or sold by Marriott International, Inc. or its affiliates ("Marriott"). The Developers use the St. Regis marks under a license from licensor, Marriott, which has not confirmed the accuracy of any of the statements or representations made about the projects by Developers. The Developers each also use the trade names, marks, and logos of the licensor, The Related Group, which licensor is not a Developer of any tower. Artist's conceptual renderings of exterior or site plan and depicting water, marina, surrounding buildings, or landmarks are modified with some surrounding buildings and landmarks omitted. Sketches, renderings, or photographs depicting lifestyle, amenities, food services, resort services, finishes, designs, materials, furnishings, plans, specifications, or art contained in this brochure are proposed only. The St. Regis Residences are developed on a site that is near water, but water access is not guaranteed. No specific view is guaranteed. The associations for each tower will be a part of a master association which will require payment of master association assessments. Some amenities described require payment of fees in addition to regular assessment payments. Consult the Developers' Prospectus for the tower in which you desire to purchase to understand the offering, the amenities, the proposed budgets, terms, conditions, specifications, fees, unit dimensions and size calculation method, site plans, and to learn what is included with the purchase and the payment of regular assessments. The Developers are not residents of the State of New York, and the offerings of Developers are not intended for residents of New York nor any other jurisdiction in which such an offering is prohibited. 2024 © by PRH/TRR BM Tower 1, LLC, PRH/TRR BM Tower 2, LLC, and PRH/TRR BM Condo, LLC, with all rights reserved. ☎

3 BEDROOMS | 3 BATHROOMS | POWDER ROOM

INTERIOR: 2,737 SF | 254 SQM EXTERIOR: 1,106 SF | 103 SQM TOTAL: 3,843 SF | 357 SQM



# THE RESORT COLLECTION

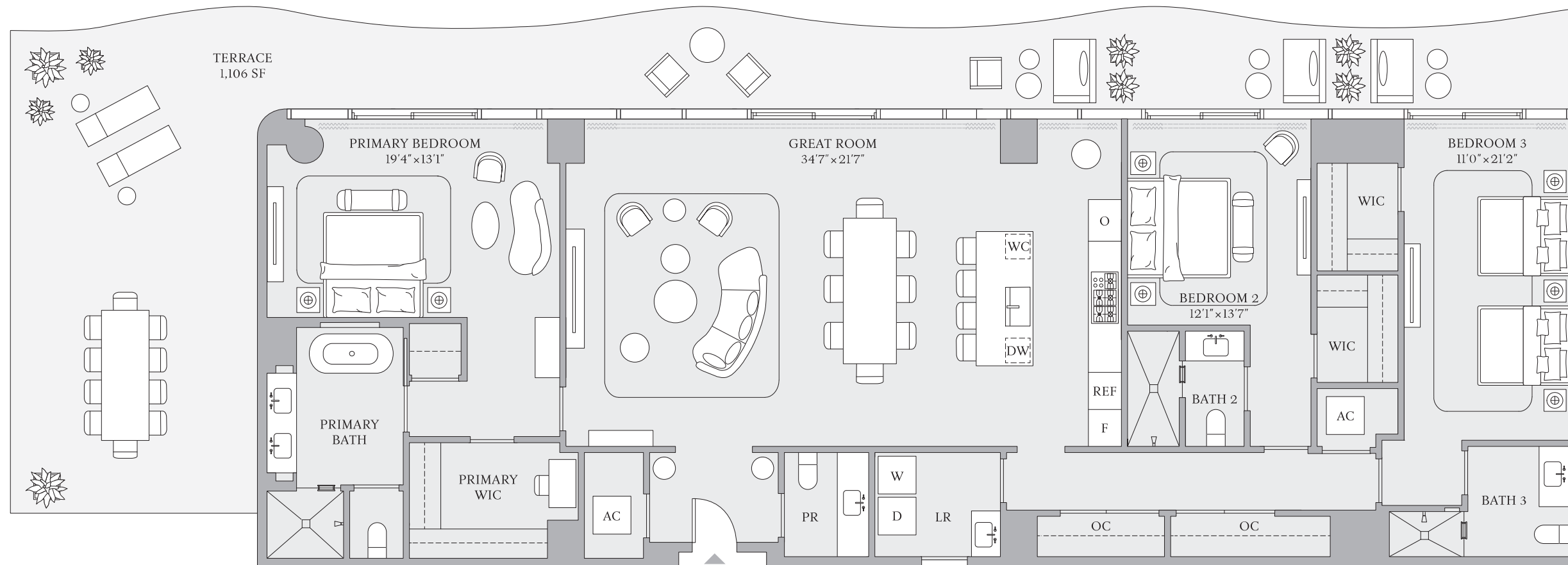
RESIDENCES 02 & 05  
FLOOR 19

3 BEDROOMS  
3 BATHROOMS  
POWDER ROOM

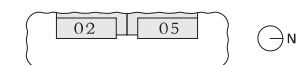
INTERIOR  
2,737 SF | 254 SQM

EXTERIOR  
1,106 SF | 103 SQM

TOTAL  
3,843 SF | 357 SQM



INTRACOASTAL WATERWAY



ATLANTIC OCEAN



The dimensions stated for any depicted unit floor plan are approximate because there are various recognized methods for calculating the square footage of a unit. The square footage stated herein is calculated from the exterior boundaries of the exterior walls to the centerline of interior demising walls without deductions for cutouts, curves, or architectural features. This method results in quoted dimensions greater than the dimensions that would be determined by using other accepted methods. The definition of "Unit" and the calculation method to be relied upon is set forth by the Developer in the Developer's Prospectus. The method set forth in the Developer's Prospectus is another commonly accepted method of calculation, but it will result in a square footage calculation that is less than the method used here. The illustrated layout, locations of windows, doors, closets, plumbing fixtures, mechanical equipment, appliances, structural elements, architectural elements, and the uses, configurations, and entries to rooms are conceptual and may change based on final approved plans, permitting, and completed construction. The illustrated furniture and the uses of space are suggested uses only and are not intended to represent or guarantee any specific use of space or accommodation of specific furnishings. Furnishings, design features, fixtures, and décor illustrated are not included with a unit purchase. Consult the Developer's Prospectus to understand what is offered with the purchase and the calculation of the Unit square footage and dimensions to be relied upon. 2024 © by PRH/TRR BM Condo, LLC, with all rights reserved. ☞





**ST REGIS**  
 BAHIA MAR ♦ FORT LAUDERDALE  
 THE RESIDENCES

## THE RESORT COLLECTION

RESIDENCES 02 & 05, FLOORS 20–23

Future residences located at:  
 801 Seabreeze Blvd.  
 Fort Lauderdale, FL 33316

SRRBahiaMar.com  
 954 282 7300

Temporary Sales Gallery:  
 1 North Fort Lauderdale Beach Blvd.  
 Lobby Level  
 Fort Lauderdale, FL 33304



**ORAL REPRESENTATIONS CANNOT BE RELIED UPON AS CORRECTLY STATING REPRESENTATIONS OF THE DEVELOPER. FOR CORRECT REPRESENTATIONS, MAKE REFERENCE TO THIS BROCHURE AND THE DOCUMENTS REQUIRED BY SECTION 718.503, FLORIDA STATUTES, TO BE FURNISHED BY A DEVELOPER TO A BUYER OR LESSEE.**

The St. Regis Residences Bahia Mar Fort Lauderdale, referred to for ease of reference as St Regis Residences is a community of three towers: including Tower 1 of condominium residences developed by PRH/TRR BM Tower 1, LLC; Tower 2 of condominium residences developed by PRH/TRR BM Tower 2, LLC; and Resort Tower 3 which includes a condominium within a portion of a building or within a multiple parcel building developed by PRH/TRR BM Condo, LLC. For ease of reference, PRH/TRR BM Tower 1, LLC, PRH/TRR BM Tower 2, LLC, and PRH/TRR BM Condo, LLC are each a "Developer" and collectively the "Developers." St Regis Residences are not owned, developed, or sold by Marriott International, Inc. or its affiliates ("Marriott"). The Developers use the St. Regis marks under a license from licensor, Marriott, which has not confirmed the accuracy of any of the statements or representations made about the projects by Developers. The Developers each also use the trade names, marks, and logos of the licensor, The Related Group, which licensor is not a Developer of any tower. Artist's conceptual renderings of exterior or site plan and depicting water, marina, surrounding buildings, or landmarks are modified with some surrounding buildings and landmarks omitted. Sketches, renderings, or photographs depicting lifestyle, amenities, food services, resort services, finishes, designs, materials, furnishings, plans, specifications, or art contained in this brochure are proposed only. The St. Regis Residences are developed on a site that is near water, but water access is not guaranteed. No specific view is guaranteed. The associations for each tower will be a part of a master association which will require payment of master association assessments. Some amenities described require payment of fees in addition to regular assessment payments. Consult the Developers' Prospectus for the tower in which you desire to purchase to understand the offering, the amenities, the proposed budgets, terms, conditions, specifications, fees, unit dimensions and size calculation method, site plans, and to learn what is included with the purchase and the payment of regular assessments. The Developers are not residents of the State of New York, and the offerings of Developers are not intended for residents of New York nor any other jurisdiction in which such an offering is prohibited. 2024 © by PRH/TRR BM Tower 1, LLC, PRH/TRR BM Tower 2, LLC, and PRH/TRR BM Condo, LLC, with all rights reserved. ☎

3 BEDROOMS | 3 BATHROOMS | POWDER ROOM

RESIDENCE 05 NORTH INTERIOR: 2,737 SF | 254 SQM EXTERIOR: 562 SF | 52 SQM TOTAL: 3,299 SF | 306 SQM  
 RESIDENCE 02 SOUTH INTERIOR: 2,718 SF | 253 SQM EXTERIOR: 562 SF | 52 SQM TOTAL: 3,280 SF | 305 SQM



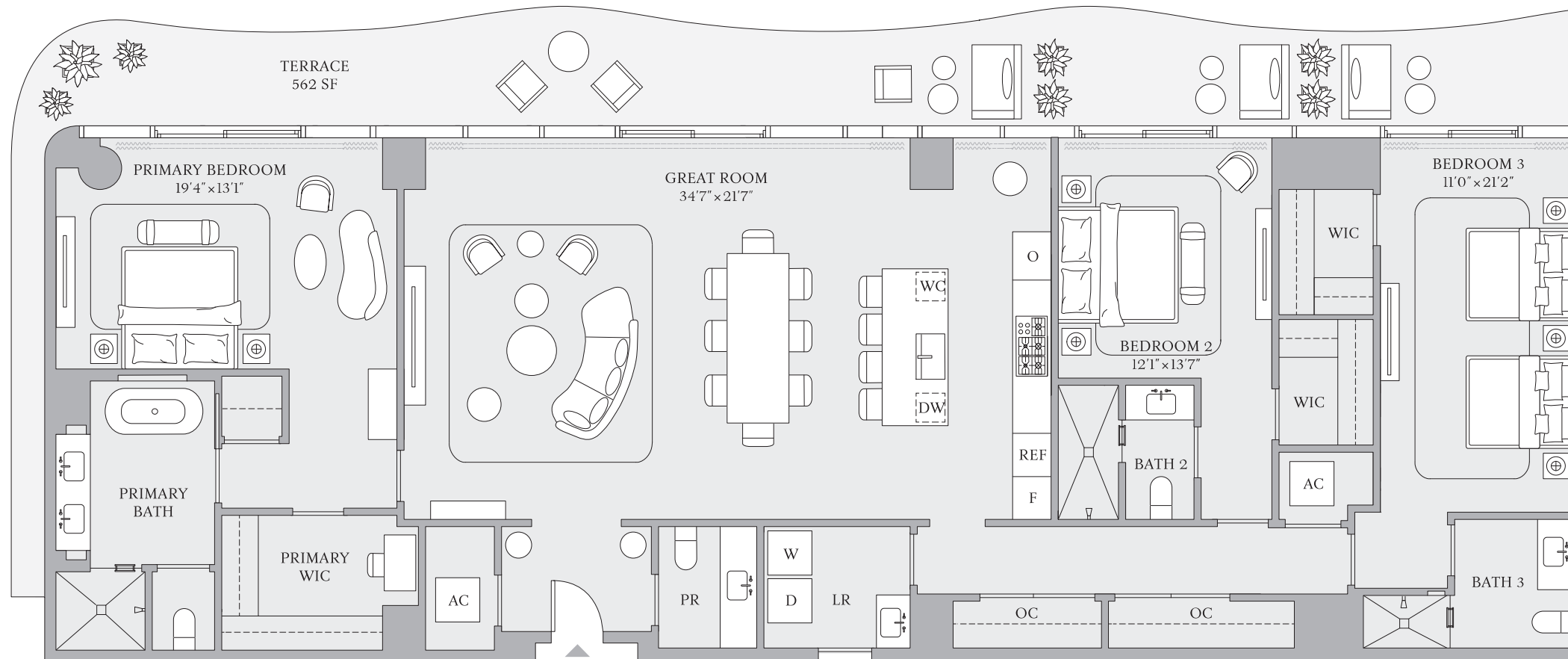
# THE RESORT COLLECTION

RESIDENCES 02 & 05  
FLOORS 20-23

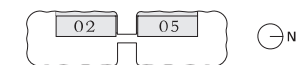
3 BEDROOMS  
3 BATHROOMS  
POWDER ROOM

RESIDENCE 05:  
INTERIOR  
2,737 SF | 254 SQM  
EXTERIOR  
562 SF | 52 SQM  
TOTAL  
3,299 SF | 306 SQM

RESIDENCE 02:  
INTERIOR  
2,718 SF | 253 SQM  
EXTERIOR  
562 SF | 52 SQM  
TOTAL  
3,280 SF | 305 SQM



INTRACOASTAL WATERWAY



ATLANTIC OCEAN



The dimensions stated for any depicted unit floor plan are approximate because there are various recognized methods for calculating the square footage of a unit. The square footage stated herein is calculated from the exterior boundaries of the exterior walls to the centerline of interior demising walls without deductions for cutouts, curves, or architectural features. This method results in quoted dimensions greater than the dimensions that would be determined by using other accepted methods. The definition of "Unit" and the calculation method to be relied upon is set forth by the Developer in the Developer's Prospectus. The method set forth in the Developer's Prospectus is another commonly accepted method of calculation, but it will result in a square footage calculation that is less than the method used here. The illustrated layout, locations of windows, doors, closets, plumbing fixtures, mechanical equipment, appliances, structural elements, architectural elements, and the uses, configurations, and entries to rooms are conceptual and may change based on final approved plans, permitting, and completed construction. The illustrated furniture and the uses of space are suggested uses only and are not intended to represent or guarantee any specific use of space or accommodation of specific furnishings. Furnishings, design features, fixtures, and décor illustrated are not included with a unit purchase. Consult the Developer's Prospectus to understand what is offered with the purchase and the calculation of the Unit square footage and dimensions to be relied upon. 2024 © by PRH/TRR BM Condo, LLC, with all rights reserved. ®



**ST REGIS**  
BAHIA MAR ♦ FORT LAUDERDALE  
THE RESIDENCES

## THE RESORT COLLECTION

RESIDENCES 01 & 06, FLOORS 14–23

Future residences located at:  
801 Seabreeze Blvd.  
Fort Lauderdale, FL 33316

SRRBahiaMar.com  
954 282 7300

Temporary Sales Gallery:  
1 North Fort Lauderdale Beach Blvd.  
Lobby Level  
Fort Lauderdale, FL 33304



**ORAL REPRESENTATIONS CANNOT BE RELIED UPON AS CORRECTLY STATING REPRESENTATIONS OF THE DEVELOPER. FOR CORRECT REPRESENTATIONS, MAKE REFERENCE TO THIS BROCHURE AND THE DOCUMENTS REQUIRED BY SECTION 718.503, FLORIDA STATUTES, TO BE FURNISHED BY A DEVELOPER TO A BUYER OR LESSEE.**

The St. Regis Residences Bahia Mar Fort Lauderdale, referred to for ease of reference as St Regis Residences is a community of three towers: including Tower 1 of condominium residences developed by PRH/TRR BM Tower 1, LLC; Tower 2 of condominium residences developed by PRH/TRR BM Tower 2, LLC; and Resort Tower 3 which includes a condominium within a portion of a building or within a multiple parcel building developed by PRH/TRR BM Condo, LLC. For ease of reference, PRH/TRR BM Tower 1, LLC, PRH/TRR BM Tower 2, LLC, and PRH/TRR BM Condo, LLC are each a "Developer" and collectively the "Developers." St Regis Residences are not owned, developed, or sold by Marriott International, Inc. or its affiliates ("Marriott"). The Developers use the St. Regis marks under a license from licensor, Marriott, which has not confirmed the accuracy of any of the statements or representations made about the projects by Developers. The Developers each also use the trade names, marks, and logos of the licensor, The Related Group, which licensor is not a Developer of any tower. Artist's conceptual renderings of exterior or site plan and depicting water, marina, surrounding buildings, or landmarks are modified with some surrounding buildings and landmarks omitted. Sketches, renderings, or photographs depicting lifestyle, amenities, food services, resort services, finishes, designs, materials, furnishings, plans, specifications, or art contained in this brochure are proposed only. The St. Regis Residences are developed on a site that is near water, but water access is not guaranteed. No specific view is guaranteed. The associations for each tower will be a part of a master association which will require payment of master association assessments. Some amenities described require payment of fees in addition to regular assessment payments. Consult the Developers' Prospectus for the tower in which you desire to purchase to understand the offering, the amenities, the proposed budgets, terms, conditions, specifications, fees, unit dimensions and size calculation method, site plans, and to learn what is included with the purchase and the payment of regular assessments. The Developers are not residents of the State of New York, and the offerings of Developers are not intended for residents of New York nor any other jurisdiction in which such an offering is prohibited. 2024 © by PRH/TRR BM Tower 1, LLC, PRH/TRR BM Tower 2, LLC, and PRH/TRR BM Condo, LLC, with all rights reserved. ☎

3 BEDROOMS | 3 BATHROOMS | POWDER ROOM

INTERIOR: 2,278 SF | 212 SQM EXTERIOR: 918 SF | 85 SQM TOTAL: 3,196 SF | 297 SQM



# THE RESORT COLLECTION

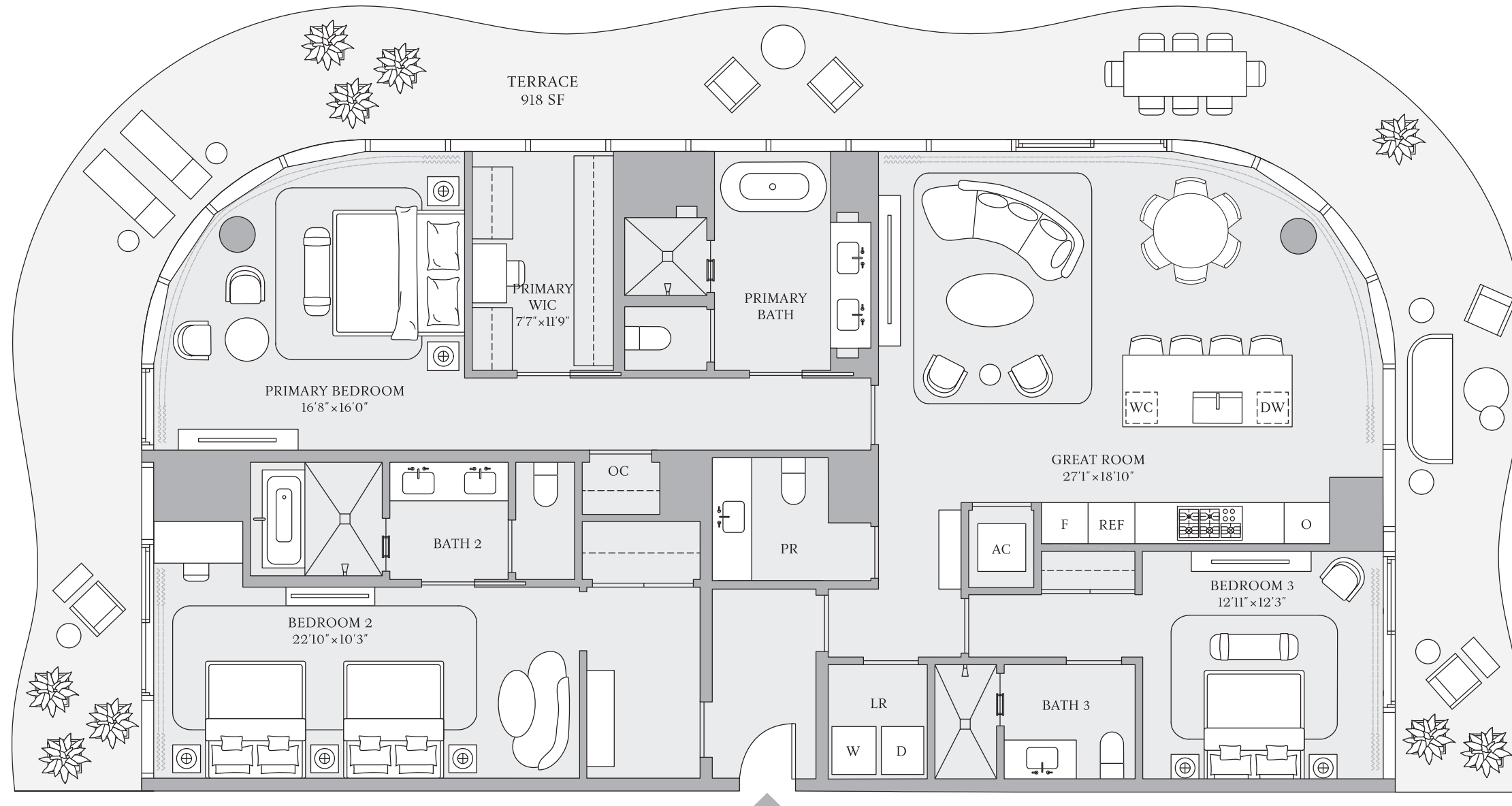
RESIDENCES 01 & 06  
FLOORS 14-23

3 BEDROOMS  
3 BATHROOMS  
POWDER ROOM

INTERIOR  
2,278 SF | 212 SQM

EXTERIOR  
918 SF | 85 SQM

TOTAL  
3,196 SF | 297 SQM



INTRACOASTAL WATERWAY



ATLANTIC OCEAN



FORT LAUDERDALE

The dimensions stated for any depicted unit floor plan are approximate because there are various recognized methods for calculating the square footage of a unit. The square footage stated herein is calculated from the exterior boundaries of the exterior walls to the centerline of interior demising walls without deductions for cutouts, curves, or architectural features. This method results in quoted dimensions greater than the dimensions that would be determined by using other accepted methods. The definition of "Unit" and the calculation method to be relied upon is set forth by the Developer in the Developer's Prospectus. The method set forth in the Developer's Prospectus is another commonly accepted method of calculation, but it will result in a square footage calculation that is less than the method used here. The illustrated layout, locations of windows, doors, closets, plumbing fixtures, mechanical equipment, appliances, structural elements, architectural elements, and the uses, configurations, and entries to rooms are conceptual and may change based on final approved plans, permitting, and completed construction. The illustrated furniture and the uses of space are suggested uses only and are not intended to represent or guarantee any specific use of space or accommodation of specific furnishings. Furnishings, design features, fixtures, and décor illustrated are not included with a unit purchase. Consult the Developer's Prospectus to understand what is offered with the purchase and the calculation of the Unit square footage and dimensions to be relied upon. 2024 © by PRH/TRR BM Condo, LLC, with all rights reserved. ☞