



ARBOR

b

2 Bedrooms  
2 Bathrooms  
Private Garden  
20 ft Ceilings  
Den

Interior  
1465 ft<sup>2</sup> / 136 m<sup>2</sup>

Exterior  
469 ft<sup>2</sup> / 44 m<sup>2</sup>

Total  
1934 ft<sup>2</sup> / 180 m<sup>2</sup>

Residences –  
TH 2 TH 3 TH 4 TH 8  
TH 9 TH 10

Project Location – 3034 Oak Ave Miami, FL 33133

ORAL REPRESENTATIONS CANNOT BE RELIED UPON AS CORRECTLY STATING REPRESENTATIONS OF THE DEVELOPER. FOR CORRECT REPRESENTATIONS, MAKE REFERENCE TO THIS BROCHURE AND TO THE DOCUMENTS REQUIRED BY SECTION 718.503, FLORIDA STATUTES, TO BE FURNISHED BY A DEVELOPER TO A BUYER OR LESSEE.

SKETCHES, RENDERINGS, GRAPHIC MATERIALS, PLANS, SPECIFICATIONS, TERMS, CONDITIONS AND STATEMENTS CONTAINED HEREIN ARE PROPOSED ONLY AND ARE BASED ON CONCEPTUAL DEVELOPMENT PLANS THAT ARE SUBJECT TO ARCHITECTURAL AND OTHER REVISIONS AT THE SOLE DISCRETION OF THE DEVELOPER, BUILDER, ARCHITECT, OR AS MAY BE REQUIRED BY LAW, AND SHOULD NOT BE RELIED UPON. NO GUARANTEES OR REPRESENTATIONS ARE MADE THAT ANY MATTERS CONTAINED HEREIN SHALL BE PROVIDED. FLOOR PLANS MAY NOT BE TO SCALE. ANY FURNITURE, APPLIANCES OR ITEMS DEPICTED HEREIN ARE SHOWN FOR ARTISTIC AND ILLUSTRATIVE PURPOSES ONLY AND ARE NOT INCLUDED IN THE PURCHASE AND SALE OF THE UNIT. DIMENSIONS ARE BASED ON THE DEFINITION OF THE UNIT AS PROVIDED IN THE DECLARATION AND THE FLORIDA ADMINISTRATIVE CODE, AS SUCH THEY INCLUDE ONLY THE INTERIOR AIRSPACE BETWEEN PERIMETER WALLS AND EXCLUDE INTERIOR STRUCTURAL COMPONENTS. HOWEVER, MEASUREMENTS OF THE ROOMS SET FORTH ON ANY FLOOR PLAN ARE GENERALLY TAKEN FROM THE GREATEST POINT OF EACH GIVEN ROOM (AS IF THE ROOM WAS A PERFECT RECTANGLE), WITHOUT REGARD FOR ANY CUTOUTS. ACCORDINGLY, THE AREA OF THE ACTUAL ROOM WILL TYPICALLY BE SMALLER THAN THE PRODUCT OBTAINED BY MULTIPLYING THE STATED LENGTH TIMES WIDTH. ALL DIMENSIONS ARE APPROXIMATE AND MAY VARY FROM ACTUAL CONSTRUCTION. THE RENDERINGS ILLUSTRATE AND DEPICT A LIFESTYLE AND MAY INCLUDE OPTIONS, EXTRAS, AMENITIES AND FEATURES WHICH ARE SUBJECT TO CHANGE WITHOUT NOTICE AND MAY NOT BE AVAILABLE. RENDERINGS MAY DEPICT VIEWS THAT ARE NOT AVAILABLE. NO GUARANTEES OR REPRESENTATIONS ARE MADE AS TO CURRENT OR FUTURE VIEWS FROM ANY UNIT. BUYERS SHOULD CHECK WITH THE SALES CENTER FOR THE MOST CURRENT PRICING. THIS IS NOT INTENDED TO BE AN OFFER TO SELL, OR SOLICITATION TO BUY CONDOMINIUM UNITS WHERE PROHIBITED BY LAW. SUCH AN OFFER SHALL ONLY BE MADE PURSUANT TO THE PROSPECTUS (OFFERING CIRCULAR) FOR THE CONDOMINIUM AND NO STATEMENTS OR DEPICTIONS SHOULD BE RELIED UPON UNLESS MADE IN THE PROSPECTUS OR YOUR PURCHASE AGREEMENT. ALL REAL ESTATE SHOWN HEREIN IS SUBJECT TO THE US FEDERAL FAIR HOUSING ACT OF 1998.



Arbor 3034





ARBOR

b

2 Bedrooms  
2 Bathrooms  
Private Garden  
20 ft Ceilings  
Den

Interior  
1465 ft<sup>2</sup> / 136 m<sup>2</sup>

Exterior  
469 ft<sup>2</sup> / 44 m<sup>2</sup>

Total  
1934 ft<sup>2</sup> / 180 m<sup>2</sup>

Residences –  
TH 2 TH 3 TH 4 TH 8  
TH 9 TH 10

Project Location – 3034 Oak Ave Miami, FL 33133

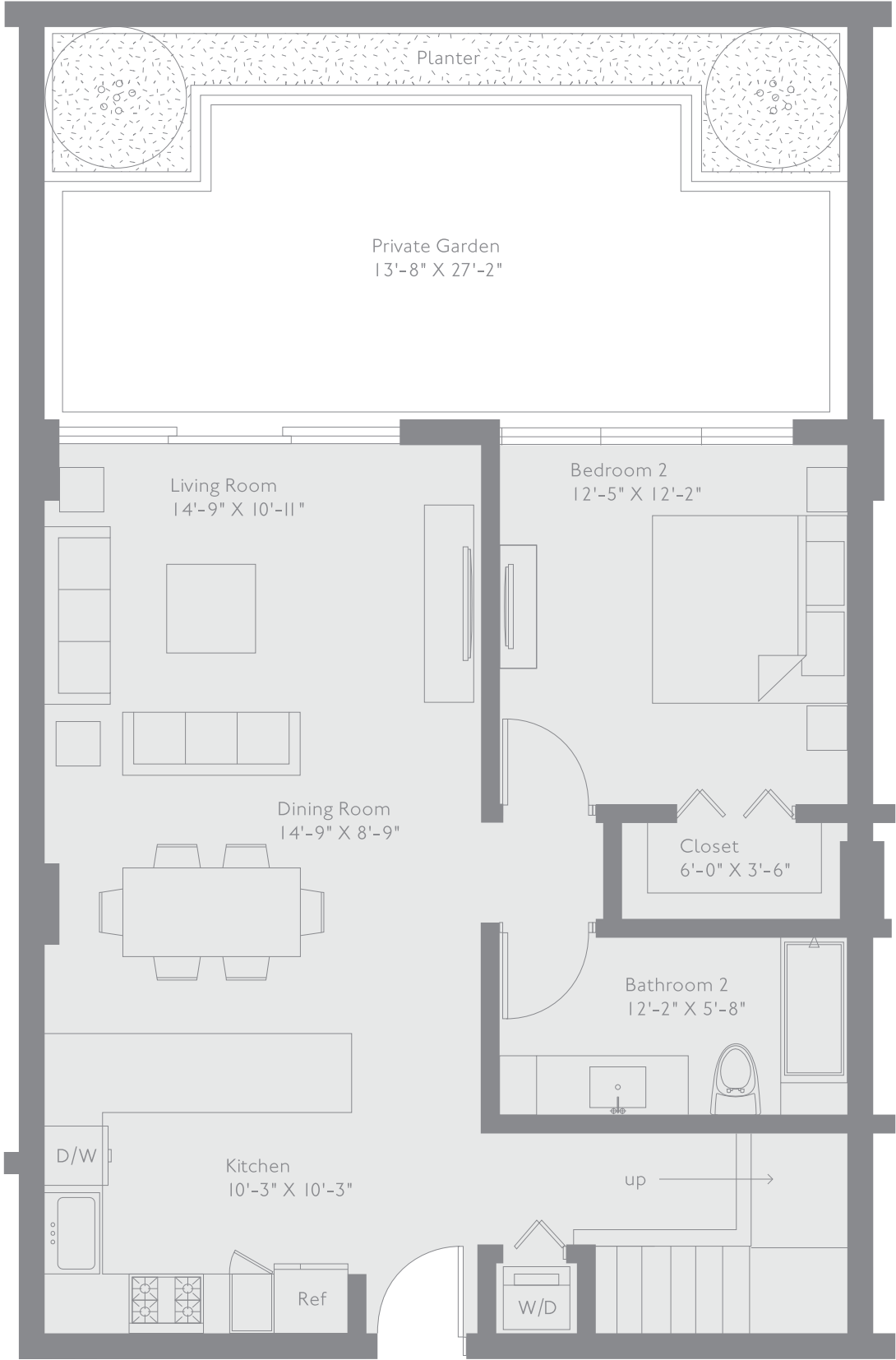
ORAL REPRESENTATIONS CANNOT BE RELIED UPON AS CORRECTLY STATING REPRESENTATIONS OF THE DEVELOPER. FOR CORRECT REPRESENTATIONS, MAKE REFERENCE TO THIS BROCHURE AND TO THE DOCUMENTS REQUIRED BY SECTION 718.503, FLORIDA STATUTES, TO BE FURNISHED BY A DEVELOPER TO A BUYER OR LESSEE.

SKETCHES, RENDERINGS, GRAPHIC MATERIALS, PLANS, SPECIFICATIONS, TERMS, CONDITIONS AND STATEMENTS CONTAINED HEREIN ARE PROPOSED ONLY AND ARE BASED ON CONCEPTUAL DEVELOPMENT PLANS THAT ARE SUBJECT TO ARCHITECTURAL AND OTHER REVISIONS AT THE SOLE DISCRETION OF THE DEVELOPER, BUILDER, ARCHITECT, OR AS MAY BE REQUIRED BY LAW, AND SHOULD NOT BE RELIED UPON. NO GUARANTEES OR REPRESENTATIONS ARE MADE THAT ANY MATTERS CONTAINED HEREIN SHALL BE PROVIDED. FLOOR PLANS MAY NOT BE TO SCALE. ANY FURNITURE, APPLIANCES OR ITEMS DEPICTED HEREIN ARE SHOWN FOR ARTISTIC AND ILLUSTRATIVE PURPOSES ONLY AND ARE NOT INCLUDED IN THE PURCHASE AND SALE OF THE UNIT. DIMENSIONS ARE BASED ON THE DEFINITION OF THE UNIT AS PROVIDED IN THE DECLARATION AND THE FLORIDA ADMINISTRATIVE CODE, AS SUCH THEY INCLUDE ONLY THE INTERIOR AIRSPACE BETWEEN PERIMETER WALLS AND EXCLUDE INTERIOR STRUCTURAL COMPONENTS. HOWEVER, MEASUREMENTS OF THE ROOMS SET FORTH ON ANY FLOOR PLAN ARE GENERALLY TAKEN FROM THE GREATEST POINT OF EACH GIVEN ROOM (AS IF THE ROOM WAS A PERFECT RECTANGLE), WITHOUT REGARD FOR ANY CUTOUTS. ACCORDINGLY, THE AREA OF THE ACTUAL ROOM WILL TYPICALLY BE SMALLER THAN THE PRODUCT OBTAINED BY MULTIPLYING THE STATED LENGTH TIMES WIDTH. ALL DIMENSIONS ARE APPROXIMATE AND MAY VARY FROM ACTUAL CONSTRUCTION. THE RENDERINGS ILLUSTRATE AND DEPICT A LIFESTYLE AND MAY INCLUDE OPTIONS, EXTRAS, AMENITIES AND FEATURES WHICH ARE SUBJECT TO CHANGE WITHOUT NOTICE AND MAY NOT BE AVAILABLE. RENDERINGS MAY DEPICT VIEWS THAT ARE NOT AVAILABLE. NO GUARANTEES OR REPRESENTATIONS ARE MADE AS TO CURRENT OR FUTURE VIEWS FROM ANY UNIT. BUYERS SHOULD CHECK WITH THE SALES CENTER FOR THE MOST CURRENT PRICING. THIS IS NOT INTENDED TO BE AN OFFER TO SELL, OR SOLICITATION TO BUY CONDOMINIUM UNITS WHERE PROHIBITED BY LAW. SUCH AN OFFER SHALL ONLY BE MADE PURSUANT TO THE PROSPECTUS (OFFERING CIRCULAR) FOR THE CONDOMINIUM AND NO STATEMENTS OR DEPICTIONS SHOULD BE RELIED UPON UNLESS MADE IN THE PROSPECTUS OR YOUR PURCHASE AGREEMENT. ALL REAL ESTATE SHOWN HEREIN IS SUBJECT TO THE US FEDERAL FAIR HOUSING ACT OF 1998.

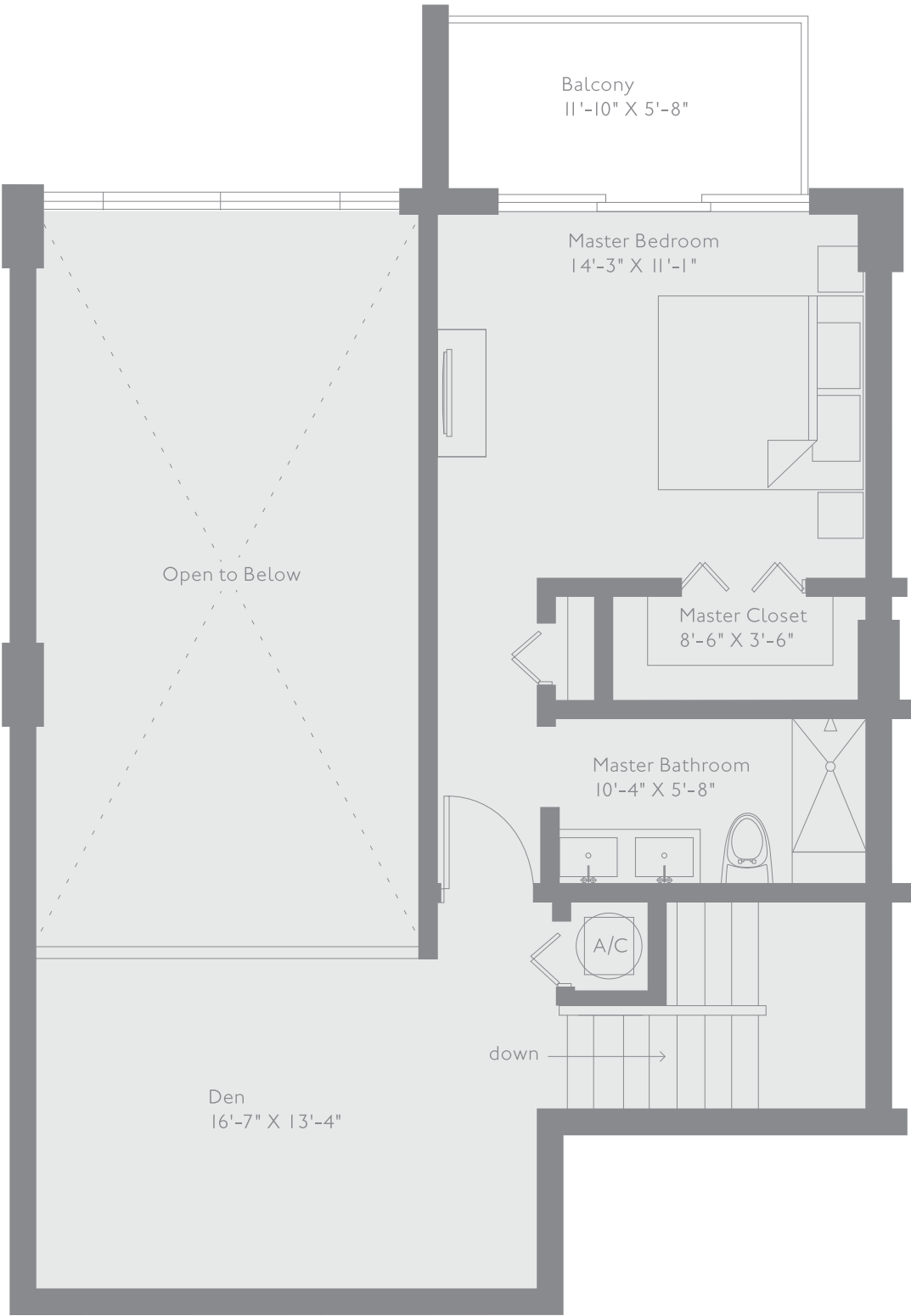


Arbor 3034

Level One



Level Two



N —

b

2 Bedrooms  
2 Bathrooms  
Private Garden  
20 ft Ceilings  
Den

Interior  
1465 ft<sup>2</sup> / 136 m<sup>2</sup>

Exterior  
469 ft<sup>2</sup> / 44 m<sup>2</sup>

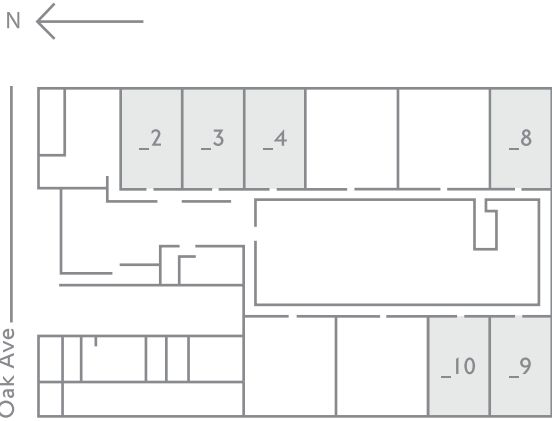
Total  
1934 ft<sup>2</sup> / 180 m<sup>2</sup>

Residences –

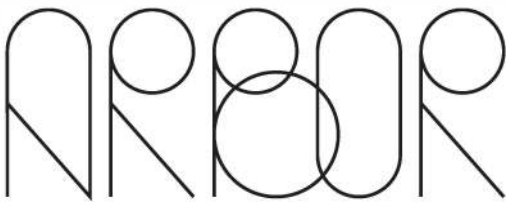
TH 2 TH 3 TH 4 TH 8  
TH 9 TH 10

Floor –

Ground + Mezzanine







3 Bedrooms  
2 Bathrooms  
20 ft Ceilings  
Den

Interior  
2024 ft<sup>2</sup> / 190 m<sup>2</sup>

Exterior  
347 ft<sup>2</sup> / 32 m<sup>2</sup>

Total  
2335 ft<sup>2</sup> / 218 m<sup>2</sup>

Rooftop Terrace  
1141 ft<sup>2</sup> / 106 m<sup>2</sup>

Total with Rooftop Terrace  
(PH Residences Only)  
3511 ft<sup>2</sup> / 326 m<sup>2</sup>

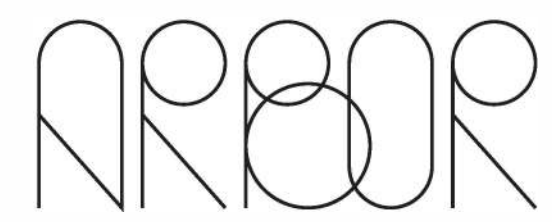
Residences –  
LPH | PH I

Project Location – 3034 Oak Ave Miami, FL 33133

ORAL REPRESENTATIONS CANNOT BE RELIED UPON AS CORRECTLY STATING REPRESENTATIONS OF THE DEVELOPER. FOR CORRECT REPRESENTATIONS, MAKE REFERENCE TO THIS BROCHURE AND TO THE DOCUMENTS REQUIRED BY SECTION 718.503, FLORIDA STATUTES, TO BE FURNISHED BY A DEVELOPER TO A BUYER OR LESSEE.

SKETCHES, RENDERINGS, GRAPHIC MATERIALS, PLANS, SPECIFICATIONS, TERMS, CONDITIONS AND STATEMENTS CONTAINED HEREIN ARE PROPOSED ONLY AND ARE BASED ON CONCEPTUAL DEVELOPMENT PLANS THAT ARE SUBJECT TO ARCHITECTURAL AND OTHER REVISIONS AT THE SOLE DISCRETION OF THE DEVELOPER, BUILDER, ARCHITECT, OR AS MAY BE REQUIRED BY LAW, AND SHOULD NOT BE RELIED UPON. NO GUARANTEES OR REPRESENTATIONS ARE MADE THAT ANY MATTERS CONTAINED HEREIN SHALL BE PROVIDED. FLOOR PLANS MAY NOT BE TO SCALE. ANY FURNITURE, APPLIANCES OR ITEMS DEPICTED HEREIN ARE SHOWN FOR ARTISTIC AND ILLUSTRATIVE PURPOSES ONLY AND ARE NOT INCLUDED IN THE PURCHASE AND SALE OF THE UNIT. DIMENSIONS ARE BASED ON THE DEFINITION OF THE UNIT AS PROVIDED IN THE DECLARATION AND THE FLORIDA ADMINISTRATIVE CODE, AS SUCH THEY INCLUDE ONLY THE INTERIOR AIRSPACE BETWEEN PERIMETER WALLS AND EXCLUDE INTERIOR STRUCTURAL COMPONENTS. HOWEVER, MEASUREMENTS OF THE ROOMS SET FORTH ON ANY FLOOR PLAN ARE GENERALLY TAKEN FROM THE GREATEST POINT OF EACH GIVEN ROOM (AS IF THE ROOM WAS A PERFECT RECTANGLE), WITHOUT REGARD FOR ANY CUTOUTS. ACCORDINGLY, THE AREA OF THE ACTUAL ROOM WILL TYPICALLY BE SMALLER THAN THE PRODUCT OBTAINED BY MULTIPLYING THE STATED LENGTH TIMES WIDTH. ALL DIMENSIONS ARE APPROXIMATE AND MAY VARY FROM ACTUAL CONSTRUCTION. THE RENDERINGS ILLUSTRATE AND DEPICT A LIFESTYLE AND MAY INCLUDE OPTIONS, EXTRAS, AMENITIES AND FEATURES WHICH ARE SUBJECT TO CHANGE WITHOUT NOTICE AND MAY NOT BE AVAILABLE. RENDERINGS MAY DEPICT VIEWS THAT ARE NOT AVAILABLE. NO GUARANTEES OR REPRESENTATIONS ARE MADE AS TO CURRENT OR FUTURE VIEWS FROM ANY UNIT. BUYERS SHOULD CHECK WITH THE SALES CENTER FOR THE MOST CURRENT PRICING. THIS IS NOT INTENDED TO BE AN OFFER TO SELL, OR SOLICITATION TO BUY CONDOMINIUM UNITS WHERE PROHIBITED BY LAW. SUCH AN OFFER SHALL ONLY BE MADE PURSUANT TO THE PROSPECTUS (OFFERING CIRCULAR) FOR THE CONDOMINIUM AND NO STATEMENTS OR DEPICTIONS SHOULD BE RELIED UPON UNLESS MADE IN THE PROSPECTUS OR YOUR PURCHASE AGREEMENT. ALL REAL ESTATE SHOWN HEREIN IS SUBJECT TO THE US FEDERAL FAIR HOUSING ACT OF 1998.





3 Bedrooms  
2 Bathrooms  
20 ft Ceilings  
Den

Interior  
2024 ft2 / 190 m2

Exterior  
347 ft2 / 32 m2

Total  
2335 ft2 / 218 m2

Rooftop Terrace  
1141 ft2 / 106 m2

Total with Rooftop Terrace  
(PH Residences Only)  
3511 ft2 / 326 m2

Residences –  
LPH I PH I

Project Location – 3034 Oak Ave Miami, FL 33133

ORAL REPRESENTATIONS CANNOT BE RELIED UPON AS CORRECTLY STATING REPRESENTATIONS OF THE DEVELOPER. FOR CORRECT REPRESENTATIONS, MAKE REFERENCE TO THIS BROCHURE AND TO THE DOCUMENTS REQUIRED BY SECTION 718.503, FLORIDA STATUTES, TO BE FURNISHED BY A DEVELOPER TO A BUYER OR LESSEE.

SKETCHES, RENDERINGS, GRAPHIC MATERIALS, PLANS, SPECIFICATIONS, TERMS, CONDITIONS AND STATEMENTS CONTAINED HEREIN ARE PROPOSED ONLY AND ARE BASED ON CONCEPTUAL DEVELOPMENT PLANS THAT ARE SUBJECT TO ARCHITECTURAL AND OTHER REVISIONS AT THE SOLE DISCRETION OF THE DEVELOPER, BUILDER, ARCHITECT, OR AS MAY BE REQUIRED BY LAW, AND SHOULD NOT BE RELIED UPON. NO GUARANTEES OR REPRESENTATIONS ARE MADE THAT ANY MATTERS CONTAINED HEREIN SHALL BE PROVIDED. FLOOR PLANS MAY NOT BE TO SCALE. ANY FURNITURE, APPLIANCES OR ITEMS DEPICTED HEREIN ARE SHOWN FOR ARTISTIC AND ILLUSTRATIVE PURPOSES ONLY AND ARE NOT INCLUDED IN THE PURCHASE AND SALE OF THE UNIT. DIMENSIONS ARE BASED ON THE DEFINITION OF THE UNIT AS PROVIDED IN THE DECLARATION AND THE FLORIDA ADMINISTRATIVE CODE, AS SUCH THEY INCLUDE ONLY THE INTERIOR AIRSPACE BETWEEN PERIMETER WALLS AND EXCLUDE INTERIOR STRUCTURAL COMPONENTS. HOWEVER, MEASUREMENTS OF THE ROOMS SET FORTH ON ANY FLOOR PLAN ARE GENERALLY TAKEN FROM THE GREATEST POINT OF EACH GIVEN ROOM (AS IF THE ROOM WAS A PERFECT RECTANGLE), WITHOUT REGARD FOR ANY CUTOUTS. ACCORDINGLY, THE AREA OF THE ACTUAL ROOM WILL TYPICALLY BE SMALLER THAN THE PRODUCT OBTAINED BY MULTIPLYING THE STATED LENGTH TIMES WIDTH. ALL DIMENSIONS ARE APPROXIMATE AND MAY VARY FROM ACTUAL CONSTRUCTION. THE RENDERINGS ILLUSTRATE AND DEPICT A LIFESTYLE AND MAY INCLUDE OPTIONS, EXTRAS, AMENITIES AND FEATURES WHICH ARE SUBJECT TO CHANGE WITHOUT NOTICE AND MAY NOT BE AVAILABLE. RENDERINGS MAY DEPICT VIEWS THAT ARE NOT AVAILABLE. NO GUARANTEES OR REPRESENTATIONS ARE MADE AS TO CURRENT OR FUTURE VIEWS FROM ANY UNIT. BUYERS SHOULD CHECK WITH THE SALES CENTER FOR THE MOST CURRENT PRICING. THIS IS NOT INTENDED TO BE AN OFFER TO SELL, OR SOLICITATION TO BUY CONDOMINIUM UNITS WHERE PROHIBITED BY LAW. SUCH AN OFFER SHALL ONLY BE MADE PURSUANT TO THE PROSPECTUS (OFFERING CIRCULAR) FOR THE CONDOMINIUM AND NO STATEMENTS OR DEPICTIONS SHOULD BE RELIED UPON UNLESS MADE IN THE PROSPECTUS OR YOUR PURCHASE AGREEMENT. ALL REAL ESTATE SHOWN HEREIN IS SUBJECT TO THE US FEDERAL FAIR HOUSING ACT OF 1998.

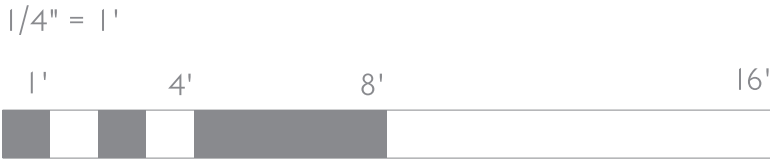
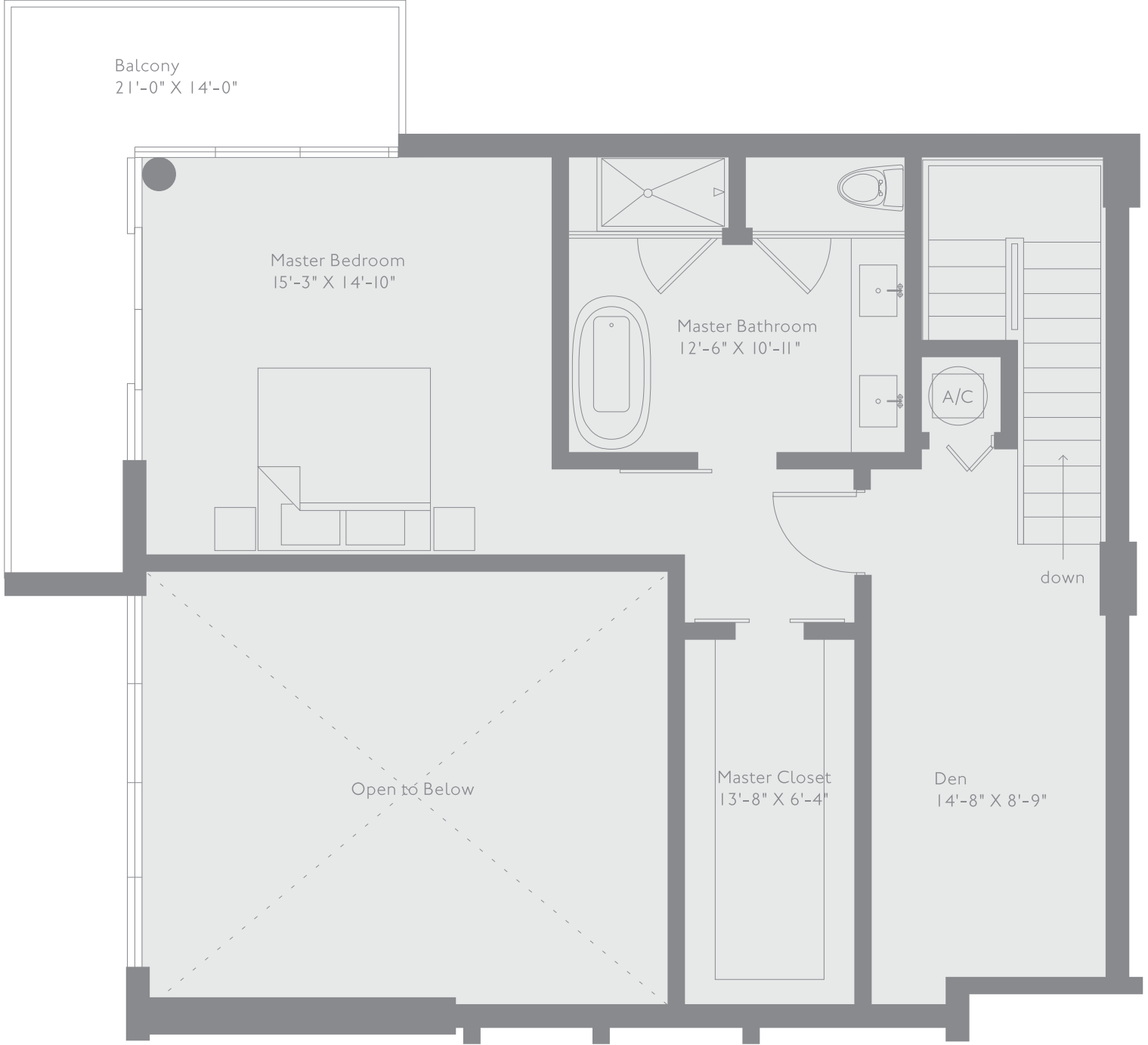


Arbor 3034

Level One



Level Two



N

C

3 Bedrooms  
2 Bathrooms  
20 ft Ceilings  
Den

Interior  
2024 ft<sup>2</sup> / 190 m<sup>2</sup>

Exterior  
347 ft<sup>2</sup> / 32 m<sup>2</sup>

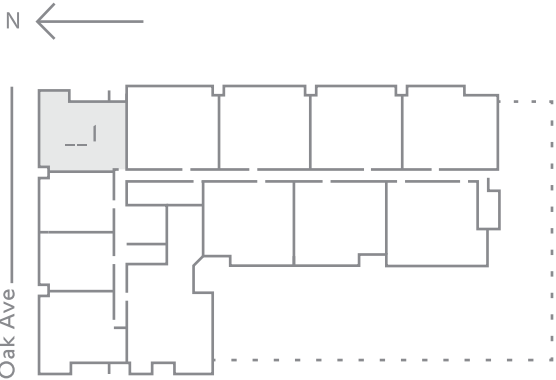
Total  
2335 ft<sup>2</sup> / 218 m<sup>2</sup>

Rooftop Terrace  
1141 ft<sup>2</sup> / 106 m<sup>2</sup>

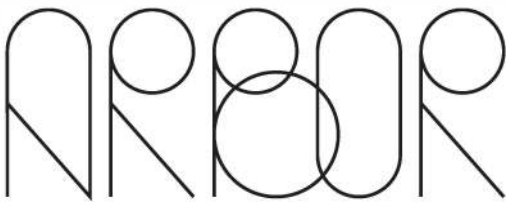
Total with Rooftop Terrace  
(PH Residences Only)  
3511 ft<sup>2</sup> / 326 m<sup>2</sup>

Residences –  
LPH | PH |

Floor –  
2 + 3  
4 + 5 + Roof







d

2 Bedrooms  
2 Bathrooms  
Den

Interior  
1474 ft2 / 137 m2

Exterior  
128 ft2 / 12 m2

Total  
1602 ft2 / 149 m2

Residences –			
203	205	307	402
403	404	405	406
407	502	503	505
507			

Project Location – 3034 Oak Ave Miami, FL 33133

ORAL REPRESENTATIONS CANNOT BE RELIED UPON AS CORRECTLY STATING REPRESENTATIONS OF THE DEVELOPER. FOR CORRECT REPRESENTATIONS, MAKE REFERENCE TO THIS BROCHURE AND TO THE DOCUMENTS REQUIRED BY SECTION 718.503, FLORIDA STATUTES, TO BE FURNISHED BY A DEVELOPER TO A BUYER OR LESSEE.

SKETCHES, RENDERINGS, GRAPHIC MATERIALS, PLANS, SPECIFICATIONS, TERMS, CONDITIONS AND STATEMENTS CONTAINED HEREIN ARE PROPOSED ONLY AND ARE BASED ON CONCEPTUAL DEVELOPMENT PLANS THAT ARE SUBJECT TO ARCHITECTURAL AND OTHER REVISIONS AT THE SOLE DISCRETION OF THE DEVELOPER, BUILDER, ARCHITECT, OR AS MAY BE REQUIRED BY LAW, AND SHOULD NOT BE RELIED UPON. NO GUARANTEES OR REPRESENTATIONS ARE MADE THAT ANY MATTERS CONTAINED HEREIN SHALL BE PROVIDED. FLOOR PLANS MAY NOT BE TO SCALE. ANY FURNITURE, APPLIANCES OR ITEMS DEPICTED HEREIN ARE SHOWN FOR ARTISTIC AND ILLUSTRATIVE PURPOSES ONLY AND ARE NOT INCLUDED IN THE PURCHASE AND SALE OF THE UNIT. DIMENSIONS ARE BASED ON THE DEFINITION OF THE UNIT AS PROVIDED IN THE DECLARATION AND THE FLORIDA ADMINISTRATIVE CODE, AS SUCH THEY INCLUDE ONLY THE INTERIOR AIRSPACE BETWEEN PERIMETER WALLS AND EXCLUDE INTERIOR STRUCTURAL COMPONENTS. HOWEVER, MEASUREMENTS OF THE ROOMS SET FORTH ON ANY FLOOR PLAN ARE GENERALLY TAKEN FROM THE GREATEST POINT OF EACH GIVEN ROOM (AS IF THE ROOM WAS A PERFECT RECTANGLE), WITHOUT REGARD FOR ANY CUTOUTS. ACCORDINGLY, THE AREA OF THE ACTUAL ROOM WILL TYPICALLY BE SMALLER THAN THE PRODUCT OBTAINED BY MULTIPLYING THE STATED LENGTH TIMES WIDTH. ALL DIMENSIONS ARE APPROXIMATE AND MAY VARY FROM ACTUAL CONSTRUCTION. THE RENDERINGS ILLUSTRATE AND DEPICT A LIFESTYLE AND MAY INCLUDE OPTIONS, EXTRAS, AMENITIES AND FEATURES WHICH ARE SUBJECT TO CHANGE WITHOUT NOTICE AND MAY NOT BE AVAILABLE. RENDERINGS MAY DEPICT VIEWS THAT ARE NOT AVAILABLE. NO GUARANTEES OR REPRESENTATIONS ARE MADE AS TO CURRENT OR FUTURE VIEWS FROM ANY UNIT. BUYERS SHOULD CHECK WITH THE SALES CENTER FOR THE MOST CURRENT PRICING. THIS IS NOT INTENDED TO BE AN OFFER TO SELL, OR SOLICITATION TO BUY CONDOMINIUM UNITS WHERE PROHIBITED BY LAW. SUCH AN OFFER SHALL ONLY BE MADE PURSUANT TO THE PROSPECTUS (OFFERING CIRCULAR) FOR THE CONDOMINIUM AND NO STATEMENTS OR DEPICTIONS SHOULD BE RELIED UPON UNLESS MADE IN THE PROSPECTUS OR YOUR PURCHASE AGREEMENT. ALL REAL ESTATE SHOWN HEREIN IS SUBJECT TO THE US FEDERAL FAIR HOUSING ACT OF 1998.







ARBOR

d 2 Bedrooms  
2 Bathrooms  
Den  
  
Interior  
1474 ft<sup>2</sup> / 137 m<sup>2</sup>  
  
Exterior  
128 ft<sup>2</sup> / 12 m<sup>2</sup>  
  
Total  
1602 ft<sup>2</sup> / 149 m<sup>2</sup>

Residences –			
203	205	307	402
403	404	405	406
407	502	503	505
507			

Project Location – 3034 Oak Ave Miami, FL 33133

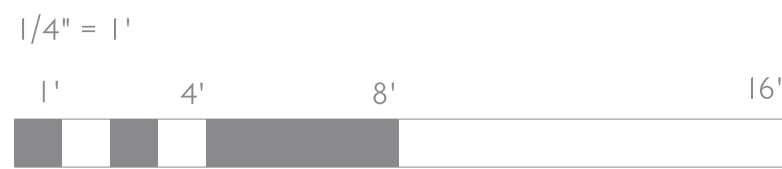
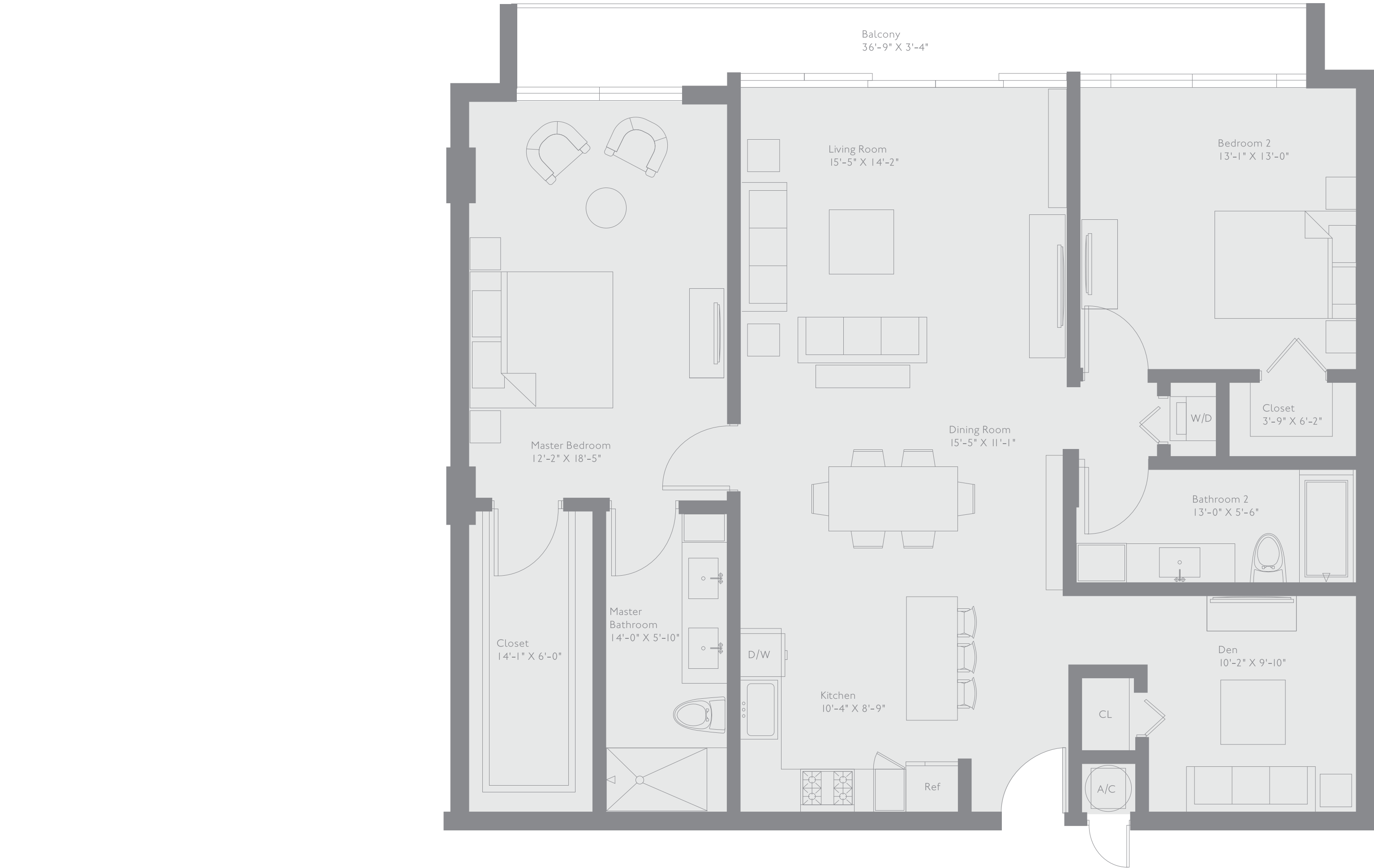
ORAL REPRESENTATIONS CANNOT BE RELIED UPON AS CORRECTLY STATING REPRESENTATIONS OF THE DEVELOPER. FOR CORRECT REPRESENTATIONS, MAKE REFERENCE TO THIS BROCHURE AND TO THE DOCUMENTS REQUIRED BY SECTION 718.503, FLORIDA STATUTES, TO BE FURNISHED BY A DEVELOPER TO A BUYER OR LESSEE.

SKETCHES, RENDERINGS, GRAPHIC MATERIALS, PLANS, SPECIFICATIONS, TERMS, CONDITIONS AND STATEMENTS CONTAINED HEREIN ARE PROPOSED ONLY AND ARE BASED ON CONCEPTUAL DEVELOPMENT PLANS THAT ARE SUBJECT TO ARCHITECTURAL AND OTHER REVISIONS AT THE SOLE DISCRETION OF THE DEVELOPER, BUILDER, ARCHITECT, OR AS MAY BE REQUIRED BY LAW, AND SHOULD NOT BE RELIED UPON. NO GUARANTEES OR REPRESENTATIONS ARE MADE THAT ANY MATTERS CONTAINED HEREIN SHALL BE PROVIDED. FLOOR PLANS MAY NOT BE TO SCALE. ANY FURNITURE, APPLIANCES OR ITEMS DEPICTED HEREIN ARE SHOWN FOR ARTISTIC AND ILLUSTRATIVE PURPOSES ONLY AND ARE NOT INCLUDED IN THE PURCHASE AND SALE OF THE UNIT. DIMENSIONS ARE BASED ON THE DEFINITION OF THE UNIT AS PROVIDED IN THE DECLARATION AND THE FLORIDA ADMINISTRATIVE CODE, AS SUCH THEY INCLUDE ONLY THE INTERIOR AIRSPACE BETWEEN PERIMETER WALLS AND EXCLUDE INTERIOR STRUCTURAL COMPONENTS. HOWEVER, MEASUREMENTS OF THE ROOMS SET FORTH ON ANY FLOOR PLAN ARE GENERALLY TAKEN FROM THE GREATEST POINT OF EACH GIVEN ROOM (AS IF THE ROOM WAS A PERFECT RECTANGLE), WITHOUT REGARD FOR ANY CUTOUTS. ACCORDINGLY, THE AREA OF THE ACTUAL ROOM WILL TYPICALLY BE SMALLER THAN THE PRODUCT OBTAINED BY MULTIPLYING THE STATED LENGTH TIMES WIDTH. ALL DIMENSIONS ARE APPROXIMATE AND MAY VARY FROM ACTUAL CONSTRUCTION. THE RENDERINGS ILLUSTRATE AND DEPICT A LIFESTYLE AND MAY INCLUDE OPTIONS, EXTRAS, AMENITIES AND FEATURES WHICH ARE SUBJECT TO CHANGE WITHOUT NOTICE AND MAY NOT BE AVAILABLE. RENDERINGS MAY DEPICT VIEWS THAT ARE NOT AVAILABLE. NO GUARANTEES OR REPRESENTATIONS ARE MADE AS TO CURRENT OR FUTURE VIEWS FROM ANY UNIT. BUYERS SHOULD CHECK WITH THE SALES CENTER FOR THE MOST CURRENT PRICING. THIS IS NOT INTENDED TO BE AN OFFER TO SELL, OR SOLICITATION TO BUY CONDOMINIUM UNITS WHERE PROHIBITED BY LAW. SUCH AN OFFER SHALL ONLY BE MADE PURSUANT TO THE PROSPECTUS (OFFERING CIRCULAR) FOR THE CONDOMINIUM AND NO STATEMENTS OR DEPICTIONS SHOULD BE RELIED UPON UNLESS MADE IN THE PROSPECTUS OR YOUR PURCHASE AGREEMENT. ALL REAL ESTATE SHOWN HEREIN IS SUBJECT TO THE US FEDERAL FAIR HOUSING ACT OF 1998.



Arbor 3034





N —

d

2 Bedrooms  
2 Bathrooms  
Den

Interior  
1474 ft2 / 137 m2

Exterior  
128 ft2 / 12 m2

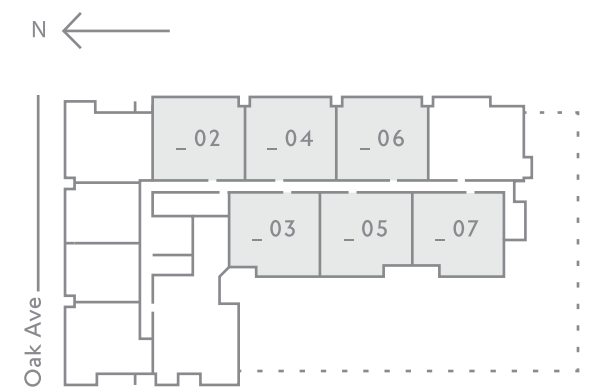
Total  
1602 ft2 / 149 m2

Residences –

203	205	307	402
403	404	405	406
407	502	503	505
507			

Floor –

2   3   4   5





ARBOR

e

3 Bedrooms  
2 Bathrooms

Interior  
1575 ft<sup>2</sup> / 146 m<sup>2</sup>

Exterior  
123 ft<sup>2</sup> / 11 m<sup>2</sup>

Total  
1698 ft<sup>2</sup> / 158 m<sup>2</sup>

Residences –  
208\* 308 408 508

Project Location – 3034 Oak Ave Miami, FL 33133

ORAL REPRESENTATIONS CANNOT BE RELIED UPON AS CORRECTLY STATING REPRESENTATIONS OF THE DEVELOPER. FOR CORRECT REPRESENTATIONS, MAKE REFERENCE TO THIS BROCHURE AND TO THE DOCUMENTS REQUIRED BY SECTION 718.503, FLORIDA STATUTES, TO BE FURNISHED BY A DEVELOPER TO A BUYER OR LESSEE.

SKETCHES, RENDERINGS, GRAPHIC MATERIALS, PLANS, SPECIFICATIONS, TERMS, CONDITIONS AND STATEMENTS CONTAINED HEREIN ARE PROPOSED ONLY AND ARE BASED ON CONCEPTUAL DEVELOPMENT PLANS THAT ARE SUBJECT TO ARCHITECTURAL AND OTHER REVISIONS AT THE SOLE DISCRETION OF THE DEVELOPER, BUILDER, ARCHITECT, OR AS MAY BE REQUIRED BY LAW, AND SHOULD NOT BE RELIED UPON. NO GUARANTEES OR REPRESENTATIONS ARE MADE THAT ANY MATTERS CONTAINED HEREIN SHALL BE PROVIDED. FLOOR PLANS MAY NOT BE TO SCALE. ANY FURNITURE, APPLIANCES OR ITEMS DEPICTED HEREIN ARE SHOWN FOR ARTISTIC AND ILLUSTRATIVE PURPOSES ONLY AND ARE NOT INCLUDED IN THE PURCHASE AND SALE OF THE UNIT. DIMENSIONS ARE BASED ON THE DEFINITION OF THE UNIT AS PROVIDED IN THE DECLARATION AND THE FLORIDA ADMINISTRATIVE CODE, AS SUCH THEY INCLUDE ONLY THE INTERIOR AIRSPACE BETWEEN PERIMETER WALLS AND EXCLUDE INTERIOR STRUCTURAL COMPONENTS. HOWEVER, MEASUREMENTS OF THE ROOMS SET FORTH ON ANY FLOOR PLAN ARE GENERALLY TAKEN FROM THE GREATEST POINT OF EACH GIVEN ROOM (AS IF THE ROOM WAS A PERFECT RECTANGLE), WITHOUT REGARD FOR ANY CUTOUTS. ACCORDINGLY, THE AREA OF THE ACTUAL ROOM WILL TYPICALLY BE SMALLER THAN THE PRODUCT OBTAINED BY MULTIPLYING THE STATED LENGTH TIMES WIDTH. ALL DIMENSIONS ARE APPROXIMATE AND MAY VARY FROM ACTUAL CONSTRUCTION. THE RENDERINGS ILLUSTRATE AND DEPICT A LIFESTYLE AND MAY INCLUDE OPTIONS, EXTRAS, AMENITIES AND FEATURES WHICH ARE SUBJECT TO CHANGE WITHOUT NOTICE AND MAY NOT BE AVAILABLE. RENDERINGS MAY DEPICT VIEWS THAT ARE NOT AVAILABLE. NO GUARANTEES OR REPRESENTATIONS ARE MADE AS TO CURRENT OR FUTURE VIEWS FROM ANY UNIT. BUYERS SHOULD CHECK WITH THE SALES CENTER FOR THE MOST CURRENT PRICING. THIS IS NOT INTENDED TO BE AN OFFER TO SELL, OR SOLICITATION TO BUY CONDOMINIUM UNITS WHERE PROHIBITED BY LAW. SUCH AN OFFER SHALL ONLY BE MADE PURSUANT TO THE PROSPECTUS (OFFERING CIRCULAR) FOR THE CONDOMINIUM AND NO STATEMENTS OR DEPICTIONS SHOULD BE RELIED UPON UNLESS MADE IN THE PROSPECTUS OR YOUR PURCHASE AGREEMENT. ALL REAL ESTATE SHOWN HEREIN IS SUBJECT TO THE US FEDERAL FAIR HOUSING ACT OF 1998.



Arbor 3034





ARBOR

e

3 Bedrooms  
2 Bathrooms

Interior  
1575 ft<sup>2</sup> / 146 m<sup>2</sup>

Exterior  
123 ft<sup>2</sup> / 11 m<sup>2</sup>

Total  
1698 ft<sup>2</sup> / 158 m<sup>2</sup>

Residences –  
208\* 308 408 508

Project Location – 3034 Oak Ave Miami, FL 33133

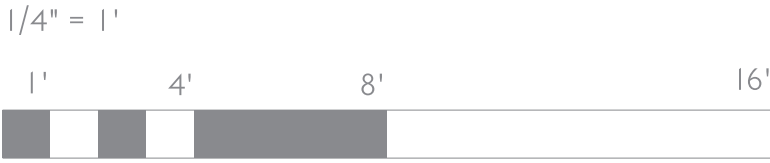
ORAL REPRESENTATIONS CANNOT BE RELIED UPON AS CORRECTLY STATING REPRESENTATIONS OF THE DEVELOPER. FOR CORRECT REPRESENTATIONS, MAKE REFERENCE TO THIS BROCHURE AND TO THE DOCUMENTS REQUIRED BY SECTION 718.503, FLORIDA STATUTES, TO BE FURNISHED BY A DEVELOPER TO A BUYER OR LESSEE.

SKETCHES, RENDERINGS, GRAPHIC MATERIALS, PLANS, SPECIFICATIONS, TERMS, CONDITIONS AND STATEMENTS CONTAINED HEREIN ARE PROPOSED ONLY AND ARE BASED ON CONCEPTUAL DEVELOPMENT PLANS THAT ARE SUBJECT TO ARCHITECTURAL AND OTHER REVISIONS AT THE SOLE DISCRETION OF THE DEVELOPER, BUILDER, ARCHITECT, OR AS MAY BE REQUIRED BY LAW, AND SHOULD NOT BE RELIED UPON. NO GUARANTEES OR REPRESENTATIONS ARE MADE THAT ANY MATTERS CONTAINED HEREIN SHALL BE PROVIDED. FLOOR PLANS MAY NOT BE TO SCALE. ANY FURNITURE, APPLIANCES OR ITEMS DEPICTED HEREIN ARE SHOWN FOR ARTISTIC AND ILLUSTRATIVE PURPOSES ONLY AND ARE NOT INCLUDED IN THE PURCHASE AND SALE OF THE UNIT. DIMENSIONS ARE BASED ON THE DEFINITION OF THE UNIT AS PROVIDED IN THE DECLARATION AND THE FLORIDA ADMINISTRATIVE CODE, AS SUCH THEY INCLUDE ONLY THE INTERIOR AIRSPACE BETWEEN PERIMETER WALLS AND EXCLUDE INTERIOR STRUCTURAL COMPONENTS. HOWEVER, MEASUREMENTS OF THE ROOMS SET FORTH ON ANY FLOOR PLAN ARE GENERALLY TAKEN FROM THE GREATEST POINT OF EACH GIVEN ROOM (AS IF THE ROOM WAS A PERFECT RECTANGLE), WITHOUT REGARD FOR ANY CUTOUTS. ACCORDINGLY, THE AREA OF THE ACTUAL ROOM WILL TYPICALLY BE SMALLER THAN THE PRODUCT OBTAINED BY MULTIPLYING THE STATED LENGTH TIMES WIDTH. ALL DIMENSIONS ARE APPROXIMATE AND MAY VARY FROM ACTUAL CONSTRUCTION. THE RENDERINGS ILLUSTRATE AND DEPICT A LIFESTYLE AND MAY INCLUDE OPTIONS, EXTRAS, AMENITIES AND FEATURES WHICH ARE SUBJECT TO CHANGE WITHOUT NOTICE AND MAY NOT BE AVAILABLE. RENDERINGS MAY DEPICT VIEWS THAT ARE NOT AVAILABLE. NO GUARANTEES OR REPRESENTATIONS ARE MADE AS TO CURRENT OR FUTURE VIEWS FROM ANY UNIT. BUYERS SHOULD CHECK WITH THE SALES CENTER FOR THE MOST CURRENT PRICING. THIS IS NOT INTENDED TO BE AN OFFER TO SELL, OR SOLICITATION TO BUY CONDOMINIUM UNITS WHERE PROHIBITED BY LAW. SUCH AN OFFER SHALL ONLY BE MADE PURSUANT TO THE PROSPECTUS (OFFERING CIRCULAR) FOR THE CONDOMINIUM AND NO STATEMENTS OR DEPICTIONS SHOULD BE RELIED UPON UNLESS MADE IN THE PROSPECTUS OR YOUR PURCHASE AGREEMENT. ALL REAL ESTATE SHOWN HEREIN IS SUBJECT TO THE US FEDERAL FAIR HOUSING ACT OF 1998.



Arbor 3034





N

e

3 Bedrooms  
2 Bathrooms

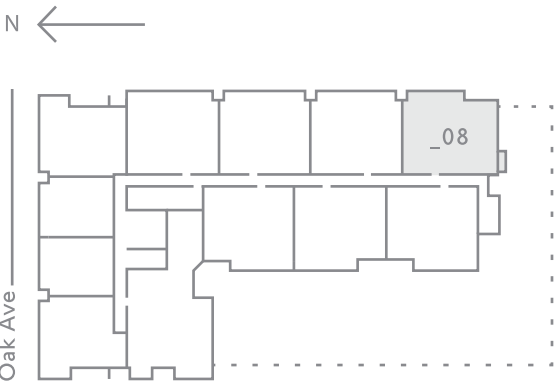
Interior  
1575 ft2 / 146 m2

Exterior  
123 ft2 / 11 m2

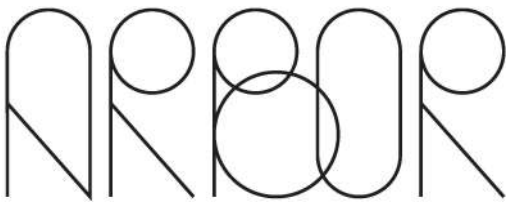
Total  
1698 ft2 / 158 m2

Residences –  
208\* 308 408 508  
\* 208 has no south balcony

Floor –  
2 3 4 5







3 Bedrooms  
2.5 Bathrooms  
Den

Interior  
2153 ft2 / 200 m2

Exterior  
292 ft2 / 27 m2

Total  
2445 ft2 / 227 m2

Residences –  
201    301    401    501

Project Location – 3034 Oak Ave Miami, FL 33133

ORAL REPRESENTATIONS CANNOT BE RELIED UPON AS CORRECTLY STATING REPRESENTATIONS OF THE DEVELOPER. FOR CORRECT REPRESENTATIONS, MAKE REFERENCE TO THIS BROCHURE AND TO THE DOCUMENTS REQUIRED BY SECTION 718.503, FLORIDA STATUTES, TO BE FURNISHED BY A DEVELOPER TO A BUYER OR LESSEE.

SKETCHES, RENDERINGS, GRAPHIC MATERIALS, PLANS, SPECIFICATIONS, TERMS, CONDITIONS AND STATEMENTS CONTAINED HEREIN ARE PROPOSED ONLY AND ARE BASED ON CONCEPTUAL DEVELOPMENT PLANS THAT ARE SUBJECT TO ARCHITECTURAL AND OTHER REVISIONS AT THE SOLE DISCRETION OF THE DEVELOPER, BUILDER, ARCHITECT, OR AS MAY BE REQUIRED BY LAW, AND SHOULD NOT BE RELIED UPON. NO GUARANTEES OR REPRESENTATIONS ARE MADE THAT ANY MATTERS CONTAINED HEREIN SHALL BE PROVIDED. FLOOR PLANS MAY NOT BE TO SCALE. ANY FURNITURE, APPLIANCES OR ITEMS DEPICTED HEREIN ARE SHOWN FOR ARTISTIC AND ILLUSTRATIVE PURPOSES ONLY AND ARE NOT INCLUDED IN THE PURCHASE AND SALE OF THE UNIT. DIMENSIONS ARE BASED ON THE DEFINITION OF THE UNIT AS PROVIDED IN THE DECLARATION AND THE FLORIDA ADMINISTRATIVE CODE, AS SUCH THEY INCLUDE ONLY THE INTERIOR AIRSPACE BETWEEN PERIMETER WALLS AND EXCLUDE INTERIOR STRUCTURAL COMPONENTS. HOWEVER, MEASUREMENTS OF THE ROOMS SET FORTH ON ANY FLOOR PLAN ARE GENERALLY TAKEN FROM THE GREATEST POINT OF EACH GIVEN ROOM (AS IF THE ROOM WAS A PERFECT RECTANGLE), WITHOUT REGARD FOR ANY CUTOUTS. ACCORDINGLY, THE AREA OF THE ACTUAL ROOM WILL TYPICALLY BE SMALLER THAN THE PRODUCT OBTAINED BY MULTIPLYING THE STATED LENGTH TIMES WIDTH. ALL DIMENSIONS ARE APPROXIMATE AND MAY VARY FROM ACTUAL CONSTRUCTION. THE RENDERINGS ILLUSTRATE AND DEPICT A LIFESTYLE AND MAY INCLUDE OPTIONS, EXTRAS, AMENITIES AND FEATURES WHICH ARE SUBJECT TO CHANGE WITHOUT NOTICE AND MAY NOT BE AVAILABLE. RENDERINGS MAY DEPICT VIEWS THAT ARE NOT AVAILABLE. NO GUARANTEES OR REPRESENTATIONS ARE MADE AS TO CURRENT OR FUTURE VIEWS FROM ANY UNIT. BUYERS SHOULD CHECK WITH THE SALES CENTER FOR THE MOST CURRENT PRICING. THIS IS NOT INTENDED TO BE AN OFFER TO SELL, OR SOLICITATION TO BUY CONDOMINIUM UNITS WHERE PROHIBITED BY LAW. SUCH AN OFFER SHALL ONLY BE MADE PURSUANT TO THE PROSPECTUS (OFFERING CIRCULAR) FOR THE CONDOMINIUM AND NO STATEMENTS OR DEPICTIONS SHOULD BE RELIED UPON UNLESS MADE IN THE PROSPECTUS OR YOUR PURCHASE AGREEMENT. ALL REAL ESTATE SHOWN HEREIN IS SUBJECT TO THE US FEDERAL FAIR HOUSING ACT OF 1998.







ARBOR

f	3 Bedrooms
	2.5 Bathrooms
	Den
i	Interior
	2153 ft2 / 200 m2
e	Exterior
	292 ft2 / 27 m2
t	Total
	2445 ft2 / 227 m2
Residences –	
201	301
401	501

Project Location – 3034 Oak Ave Miami, FL 33133

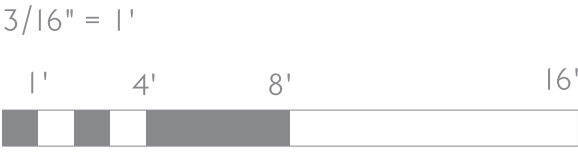
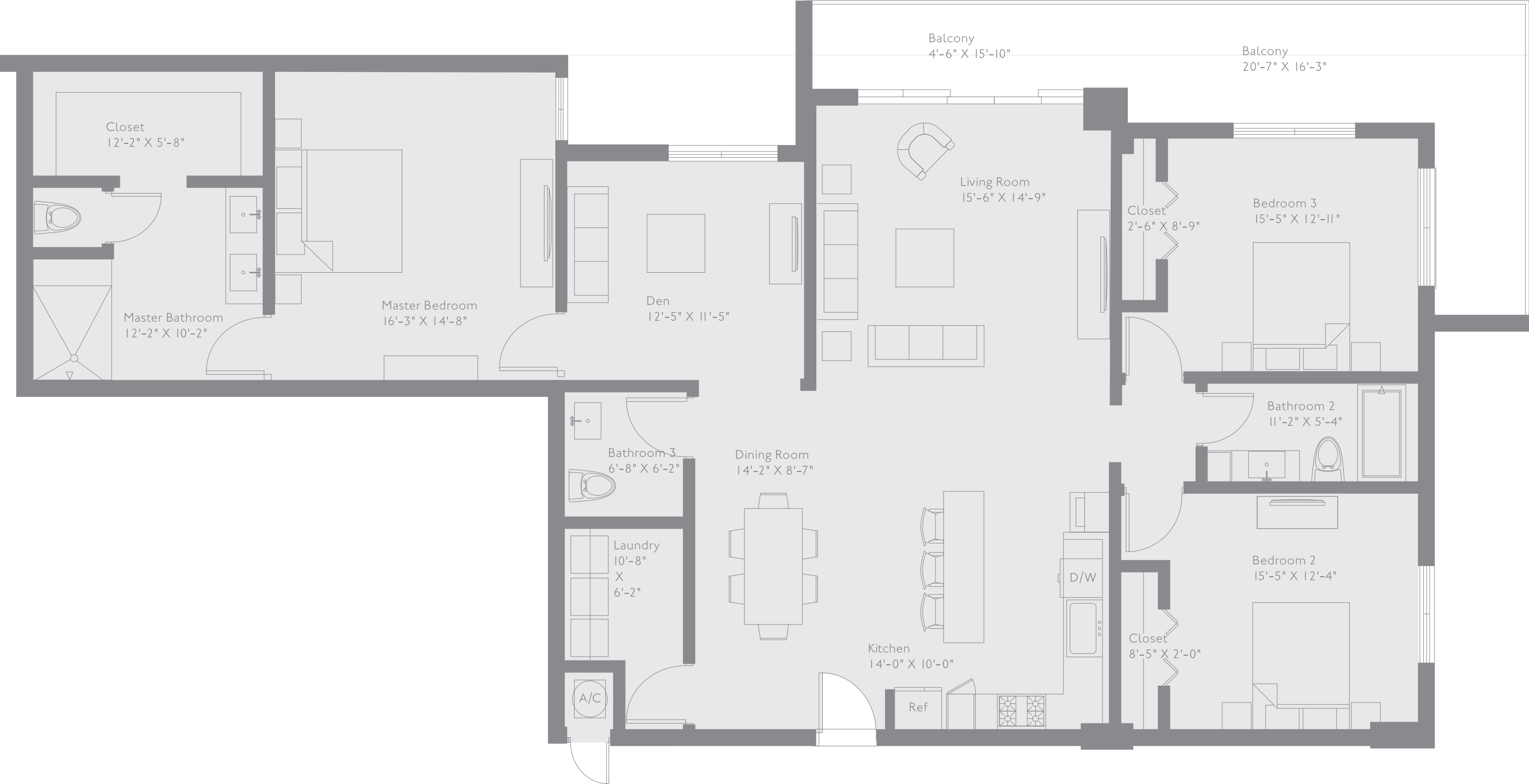
ORAL REPRESENTATIONS CANNOT BE RELIED UPON AS CORRECTLY STATING REPRESENTATIONS OF THE DEVELOPER. FOR CORRECT REPRESENTATIONS, MAKE REFERENCE TO THIS BROCHURE AND TO THE DOCUMENTS REQUIRED BY SECTION 718.503, FLORIDA STATUTES, TO BE FURNISHED BY A DEVELOPER TO A BUYER OR LESSEE.

SKETCHES, RENDERINGS, GRAPHIC MATERIALS, PLANS, SPECIFICATIONS, TERMS, CONDITIONS AND STATEMENTS CONTAINED HEREIN ARE PROPOSED ONLY AND ARE BASED ON CONCEPTUAL DEVELOPMENT PLANS THAT ARE SUBJECT TO ARCHITECTURAL AND OTHER REVISIONS AT THE SOLE DISCRETION OF THE DEVELOPER, BUILDER, ARCHITECT, OR AS MAY BE REQUIRED BY LAW, AND SHOULD NOT BE RELIED UPON. NO GUARANTEES OR REPRESENTATIONS ARE MADE THAT ANY MATTERS CONTAINED HEREIN SHALL BE PROVIDED. FLOOR PLANS MAY NOT BE TO SCALE. ANY FURNITURE, APPLIANCES OR ITEMS DEPICTED HEREIN ARE SHOWN FOR ARTISTIC AND ILLUSTRATIVE PURPOSES ONLY AND ARE NOT INCLUDED IN THE PURCHASE AND SALE OF THE UNIT. DIMENSIONS ARE BASED ON THE DEFINITION OF THE UNIT AS PROVIDED IN THE DECLARATION AND THE FLORIDA ADMINISTRATIVE CODE, AS SUCH THEY INCLUDE ONLY THE INTERIOR AIRSPACE BETWEEN PERIMETER WALLS AND EXCLUDE INTERIOR STRUCTURAL COMPONENTS. HOWEVER, MEASUREMENTS OF THE ROOMS SET FORTH ON ANY FLOOR PLAN ARE GENERALLY TAKEN FROM THE GREATEST POINT OF EACH GIVEN ROOM (AS IF THE ROOM WAS A PERFECT RECTANGLE), WITHOUT REGARD FOR ANY CUTOUTS. ACCORDINGLY, THE AREA OF THE ACTUAL ROOM WILL TYPICALLY BE SMALLER THAN THE PRODUCT OBTAINED BY MULTIPLYING THE STATED LENGTH TIMES WIDTH. ALL DIMENSIONS ARE APPROXIMATE AND MAY VARY FROM ACTUAL CONSTRUCTION. THE RENDERINGS ILLUSTRATE AND DEPICT A LIFESTYLE AND MAY INCLUDE OPTIONS, EXTRAS, AMENITIES AND FEATURES WHICH ARE SUBJECT TO CHANGE WITHOUT NOTICE AND MAY NOT BE AVAILABLE. RENDERINGS MAY DEPICT VIEWS THAT ARE NOT AVAILABLE. NO GUARANTEES OR REPRESENTATIONS ARE MADE AS TO CURRENT OR FUTURE VIEWS FROM ANY UNIT. BUYERS SHOULD CHECK WITH THE SALES CENTER FOR THE MOST CURRENT PRICING. THIS IS NOT INTENDED TO BE AN OFFER TO SELL, OR SOLICITATION TO BUY CONDOMINIUM UNITS WHERE PROHIBITED BY LAW. SUCH AN OFFER SHALL ONLY BE MADE PURSUANT TO THE PROSPECTUS (OFFERING CIRCULAR) FOR THE CONDOMINIUM AND NO STATEMENTS OR DEPICTIONS SHOULD BE RELIED UPON UNLESS MADE IN THE PROSPECTUS OR YOUR PURCHASE AGREEMENT. ALL REAL ESTATE SHOWN HEREIN IS SUBJECT TO THE US FEDERAL FAIR HOUSING ACT OF 1998.



Arbor 3034





N

f

3 Bedrooms  
2.5 Bathrooms  
Den

Interior  
2153 ft2 / 200 m2

Exterior  
292 ft2 / 27 m2

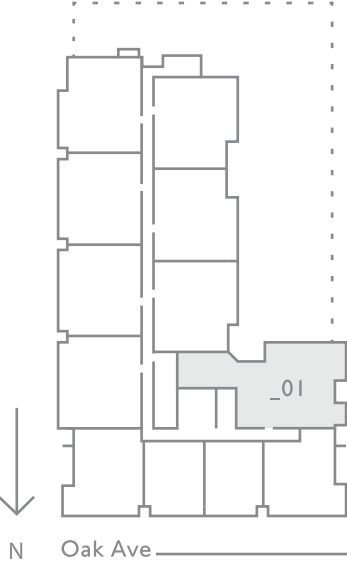
Total  
2445 ft2 / 227 m2

Residences –

201 301 401 501

Floor –

2 3 4 5





ARBOR

g

3 Bedrooms  
2 Bathrooms  
20 ft Ceilings

Interior  
1870 ft<sup>2</sup> / 173 m<sup>2</sup>

Exterior  
348 ft<sup>2</sup> / 32 m<sup>2</sup>

Total  
2218 ft<sup>2</sup> / 206 m<sup>2</sup>

Total with Rooftop Terrace  
(PH Residences Only)  
3377 ft<sup>2</sup>

Residences –  
LPH 4 PH 4

Project Location – 3034 Oak Ave Miami, FL 33133

ORAL REPRESENTATIONS CANNOT BE RELIED UPON AS CORRECTLY STATING REPRESENTATIONS OF THE DEVELOPER. FOR CORRECT REPRESENTATIONS, MAKE REFERENCE TO THIS BROCHURE AND TO THE DOCUMENTS REQUIRED BY SECTION 718.503, FLORIDA STATUTES, TO BE FURNISHED BY A DEVELOPER TO A BUYER OR LESSEE.

SKETCHES, RENDERINGS, GRAPHIC MATERIALS, PLANS, SPECIFICATIONS, TERMS, CONDITIONS AND STATEMENTS CONTAINED HEREIN ARE PROPOSED ONLY AND ARE BASED ON CONCEPTUAL DEVELOPMENT PLANS THAT ARE SUBJECT TO ARCHITECTURAL AND OTHER REVISIONS AT THE SOLE DISCRETION OF THE DEVELOPER, BUILDER, ARCHITECT, OR AS MAY BE REQUIRED BY LAW, AND SHOULD NOT BE RELIED UPON. NO GUARANTEES OR REPRESENTATIONS ARE MADE THAT ANY MATTERS CONTAINED HEREIN SHALL BE PROVIDED. FLOOR PLANS MAY NOT BE TO SCALE. ANY FURNITURE, APPLIANCES OR ITEMS DEPICTED HEREIN ARE SHOWN FOR ARTISTIC AND ILLUSTRATIVE PURPOSES ONLY AND ARE NOT INCLUDED IN THE PURCHASE AND SALE OF THE UNIT. DIMENSIONS ARE BASED ON THE DEFINITION OF THE UNIT AS PROVIDED IN THE DECLARATION AND THE FLORIDA ADMINISTRATIVE CODE, AS SUCH THEY INCLUDE ONLY THE INTERIOR AIRSPACE BETWEEN PERIMETER WALLS AND EXCLUDE INTERIOR STRUCTURAL COMPONENTS. HOWEVER, MEASUREMENTS OF THE ROOMS SET FORTH ON ANY FLOOR PLAN ARE GENERALLY TAKEN FROM THE GREATEST POINT OF EACH GIVEN ROOM (AS IF THE ROOM WAS A PERFECT RECTANGLE), WITHOUT REGARD FOR ANY CUTOUTS. ACCORDINGLY, THE AREA OF THE ACTUAL ROOM WILL TYPICALLY BE SMALLER THAN THE PRODUCT OBTAINED BY MULTIPLYING THE STATED LENGTH TIMES WIDTH. ALL DIMENSIONS ARE APPROXIMATE AND MAY VARY FROM ACTUAL CONSTRUCTION. THE RENDERINGS ILLUSTRATE AND DEPICT A LIFESTYLE AND MAY INCLUDE OPTIONS, EXTRAS, AMENITIES AND FEATURES WHICH ARE SUBJECT TO CHANGE WITHOUT NOTICE AND MAY NOT BE AVAILABLE. RENDERINGS MAY DEPICT VIEWS THAT ARE NOT AVAILABLE. NO GUARANTEES OR REPRESENTATIONS ARE MADE AS TO CURRENT OR FUTURE VIEWS FROM ANY UNIT. BUYERS SHOULD CHECK WITH THE SALES CENTER FOR THE MOST CURRENT PRICING. THIS IS NOT INTENDED TO BE AN OFFER TO SELL, OR SOLICITATION TO BUY CONDOMINIUM UNITS WHERE PROHIBITED BY LAW. SUCH AN OFFER SHALL ONLY BE MADE PURSUANT TO THE PROSPECTUS (OFFERING CIRCULAR) FOR THE CONDOMINIUM AND NO STATEMENTS OR DEPICTIONS SHOULD BE RELIED UPON UNLESS MADE IN THE PROSPECTUS OR YOUR PURCHASE AGREEMENT. ALL REAL ESTATE SHOWN HEREIN IS SUBJECT TO THE US FEDERAL FAIR HOUSING ACT OF 1998.



Arbor 3034





ARBOR

g

3 Bedrooms  
2 Bathrooms  
20 ft Ceilings

Interior  
1870 ft2 / 173 m2

Exterior  
348 ft2 / 32 m2

Total  
2218 ft2 / 206 m2

Total with Rooftop Terrace  
(PH Residences Only)  
3377 ft2

Residences –  
LPH 4 PH 4

Project Location – 3034 Oak Ave Miami, FL 33133

ORAL REPRESENTATIONS CANNOT BE RELIED UPON AS CORRECTLY STATING REPRESENTATIONS OF THE DEVELOPER. FOR CORRECT REPRESENTATIONS, MAKE REFERENCE TO THIS BROCHURE AND TO THE DOCUMENTS REQUIRED BY SECTION 718.503, FLORIDA STATUTES, TO BE FURNISHED BY A DEVELOPER TO A BUYER OR LESSEE.

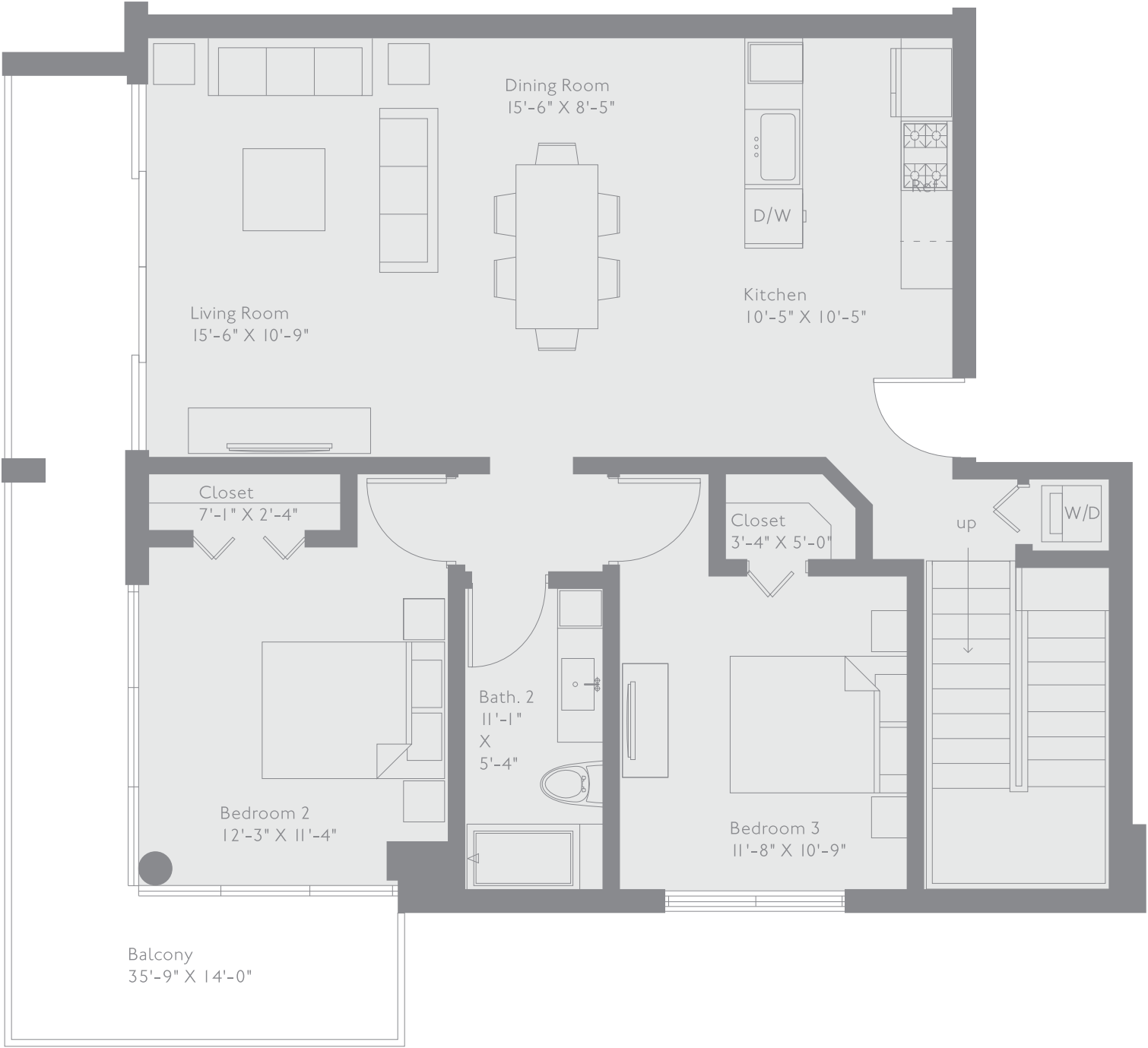
SKETCHES, RENDERINGS, GRAPHIC MATERIALS, PLANS, SPECIFICATIONS, TERMS, CONDITIONS AND STATEMENTS CONTAINED HEREIN ARE PROPOSED ONLY AND ARE BASED ON CONCEPTUAL DEVELOPMENT PLANS THAT ARE SUBJECT TO ARCHITECTURAL AND OTHER REVISIONS AT THE SOLE DISCRETION OF THE DEVELOPER, BUILDER, ARCHITECT, OR AS MAY BE REQUIRED BY LAW, AND SHOULD NOT BE RELIED UPON. NO GUARANTEES OR REPRESENTATIONS ARE MADE THAT ANY MATTERS CONTAINED HEREIN SHALL BE PROVIDED. FLOOR PLANS MAY NOT BE TO SCALE. ANY FURNITURE, APPLIANCES OR ITEMS DEPICTED HEREIN ARE SHOWN FOR ARTISTIC AND ILLUSTRATIVE PURPOSES ONLY AND ARE NOT INCLUDED IN THE PURCHASE AND SALE OF THE UNIT. DIMENSIONS ARE BASED ON THE DEFINITION OF THE UNIT AS PROVIDED IN THE DECLARATION AND THE FLORIDA ADMINISTRATIVE CODE, AS SUCH THEY INCLUDE ONLY THE INTERIOR AIRSPACE BETWEEN PERIMETER WALLS AND EXCLUDE INTERIOR STRUCTURAL COMPONENTS. HOWEVER, MEASUREMENTS OF THE ROOMS SET FORTH ON ANY FLOOR PLAN ARE GENERALLY TAKEN FROM THE GREATEST POINT OF EACH GIVEN ROOM (AS IF THE ROOM WAS A PERFECT RECTANGLE), WITHOUT REGARD FOR ANY CUTOUTS. ACCORDINGLY, THE AREA OF THE ACTUAL ROOM WILL TYPICALLY BE SMALLER THAN THE PRODUCT OBTAINED BY MULTIPLYING THE STATED LENGTH TIMES WIDTH. ALL DIMENSIONS ARE APPROXIMATE AND MAY VARY FROM ACTUAL CONSTRUCTION. THE RENDERINGS ILLUSTRATE AND DEPICT A LIFESTYLE AND MAY INCLUDE OPTIONS, EXTRAS, AMENITIES AND FEATURES WHICH ARE SUBJECT TO CHANGE WITHOUT NOTICE AND MAY NOT BE AVAILABLE. RENDERINGS MAY DEPICT VIEWS THAT ARE NOT AVAILABLE. NO GUARANTEES OR REPRESENTATIONS ARE MADE AS TO CURRENT OR FUTURE VIEWS FROM ANY UNIT. BUYERS SHOULD CHECK WITH THE SALES CENTER FOR THE MOST CURRENT PRICING. THIS IS NOT INTENDED TO BE AN OFFER TO SELL, OR SOLICITATION TO BUY CONDOMINIUM UNITS WHERE PROHIBITED BY LAW. SUCH AN OFFER SHALL ONLY BE MADE PURSUANT TO THE PROSPECTUS (OFFERING CIRCULAR) FOR THE CONDOMINIUM AND NO STATEMENTS OR DEPICTIONS SHOULD BE RELIED UPON UNLESS MADE IN THE PROSPECTUS OR YOUR PURCHASE AGREEMENT. ALL REAL ESTATE SHOWN HEREIN IS SUBJECT TO THE US FEDERAL FAIR HOUSING ACT OF 1998.



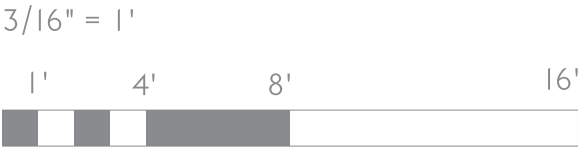
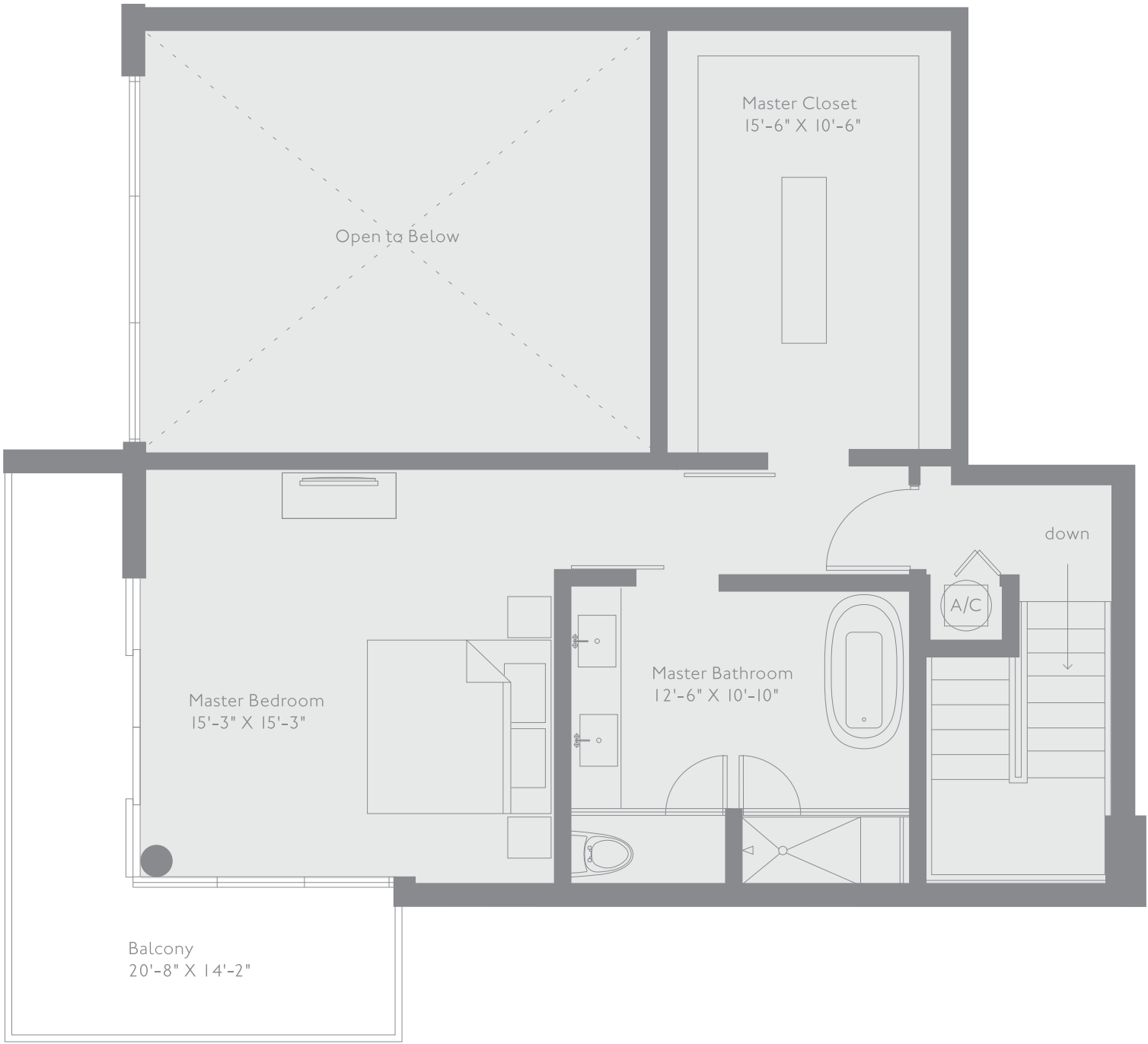
Arbor 3034



Level One



Level Two



N

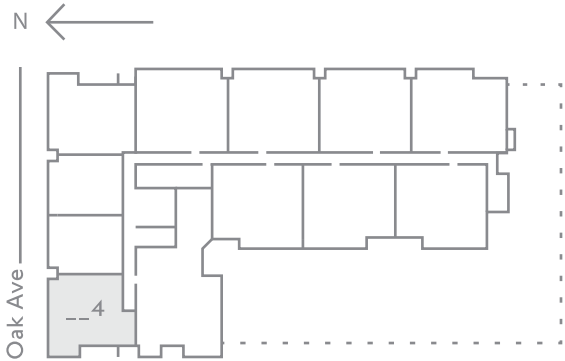


3 Bedrooms  
2 Bathrooms  
20 ft Ceilings

Interior  
1870 ft<sup>2</sup> / 173 m<sup>2</sup>  
  
Exterior  
348 ft<sup>2</sup> / 32 m<sup>2</sup>  
  
Total  
2218 ft<sup>2</sup> / 206 m<sup>2</sup>  
Total with Rooftop Terrace  
(PH Residences Only)  
3377 ft<sup>2</sup>

Residences –  
LPH 4 PH 4

Floor –  
2 + 3  
4 + 5 + Roof







ARBOR

h

2 Bedrooms  
2 Bathrooms  
20 ft Ceilings  
Den

Interior  
1475 ft2 / 137 m2

Exterior  
155 ft2 / 14 m2

Total  
1630 ft2 / 151 m2

Total with Rooftop Terrace  
(PH Residences Only)  
2609 ft2

Residences –  
LPH 2 LPH 3

Project Location – 3034 Oak Ave Miami, FL 33133

ORAL REPRESENTATIONS CANNOT BE RELIED UPON AS CORRECTLY STATING REPRESENTATIONS OF THE DEVELOPER. FOR CORRECT REPRESENTATIONS, MAKE REFERENCE TO THIS BROCHURE AND TO THE DOCUMENTS REQUIRED BY SECTION 718.503, FLORIDA STATUTES, TO BE FURNISHED BY A DEVELOPER TO A BUYER OR LESSEE.

SKETCHES, RENDERINGS, GRAPHIC MATERIALS, PLANS, SPECIFICATIONS, TERMS, CONDITIONS AND STATEMENTS CONTAINED HEREIN ARE PROPOSED ONLY AND ARE BASED ON CONCEPTUAL DEVELOPMENT PLANS THAT ARE SUBJECT TO ARCHITECTURAL AND OTHER REVISIONS AT THE SOLE DISCRETION OF THE DEVELOPER, BUILDER, ARCHITECT, OR AS MAY BE REQUIRED BY LAW, AND SHOULD NOT BE RELIED UPON. NO GUARANTEES OR REPRESENTATIONS ARE MADE THAT ANY MATTERS CONTAINED HEREIN SHALL BE PROVIDED. FLOOR PLANS MAY NOT BE TO SCALE. ANY FURNITURE, APPLIANCES OR ITEMS DEPICTED HEREIN ARE SHOWN FOR ARTISTIC AND ILLUSTRATIVE PURPOSES ONLY AND ARE NOT INCLUDED IN THE PURCHASE AND SALE OF THE UNIT. DIMENSIONS ARE BASED ON THE DEFINITION OF THE UNIT AS PROVIDED IN THE DECLARATION AND THE FLORIDA ADMINISTRATIVE CODE, AS SUCH THEY INCLUDE ONLY THE INTERIOR AIRSPACE BETWEEN PERIMETER WALLS AND EXCLUDE INTERIOR STRUCTURAL COMPONENTS. HOWEVER, MEASUREMENTS OF THE ROOMS SET FORTH ON ANY FLOOR PLAN ARE GENERALLY TAKEN FROM THE GREATEST POINT OF EACH GIVEN ROOM (AS IF THE ROOM WAS A PERFECT RECTANGLE), WITHOUT REGARD FOR ANY CUTOUTS. ACCORDINGLY, THE AREA OF THE ACTUAL ROOM WILL TYPICALLY BE SMALLER THAN THE PRODUCT OBTAINED BY MULTIPLYING THE STATED LENGTH TIMES WIDTH. ALL DIMENSIONS ARE APPROXIMATE AND MAY VARY FROM ACTUAL CONSTRUCTION. THE RENDERINGS ILLUSTRATE AND DEPICT A LIFESTYLE AND MAY INCLUDE OPTIONS, EXTRAS, AMENITIES AND FEATURES WHICH ARE SUBJECT TO CHANGE WITHOUT NOTICE AND MAY NOT BE AVAILABLE. RENDERINGS MAY DEPICT VIEWS THAT ARE NOT AVAILABLE. NO GUARANTEES OR REPRESENTATIONS ARE MADE AS TO CURRENT OR FUTURE VIEWS FROM ANY UNIT. BUYERS SHOULD CHECK WITH THE SALES CENTER FOR THE MOST CURRENT PRICING. THIS IS NOT INTENDED TO BE AN OFFER TO SELL, OR SOLICITATION TO BUY CONDOMINIUM UNITS WHERE PROHIBITED BY LAW. SUCH AN OFFER SHALL ONLY BE MADE PURSUANT TO THE PROSPECTUS (OFFERING CIRCULAR) FOR THE CONDOMINIUM AND NO STATEMENTS OR DEPICTIONS SHOULD BE RELIED UPON UNLESS MADE IN THE PROSPECTUS OR YOUR PURCHASE AGREEMENT. ALL REAL ESTATE SHOWN HEREIN IS SUBJECT TO THE US FEDERAL FAIR HOUSING ACT OF 1998.







ARBOR

h 2 Bedrooms  
2 Bathrooms  
20 ft Ceilings  
Den

Interior  
1475 ft<sup>2</sup> / 137 m<sup>2</sup>

Exterior  
155 ft<sup>2</sup> / 14 m<sup>2</sup>

Total  
1630 ft<sup>2</sup> / 151 m<sup>2</sup>

Total with Rooftop Terrace  
(PH Residences Only)  
2609 ft<sup>2</sup>

Residences –  
LPH 2 LPH 3

Project Location – 3034 Oak Ave Miami, FL 33133

ORAL REPRESENTATIONS CANNOT BE RELIED UPON AS CORRECTLY STATING REPRESENTATIONS OF THE DEVELOPER. FOR CORRECT REPRESENTATIONS, MAKE REFERENCE TO THIS BROCHURE AND TO THE DOCUMENTS REQUIRED BY SECTION 718.503, FLORIDA STATUTES, TO BE FURNISHED BY A DEVELOPER TO A BUYER OR LESSEE.

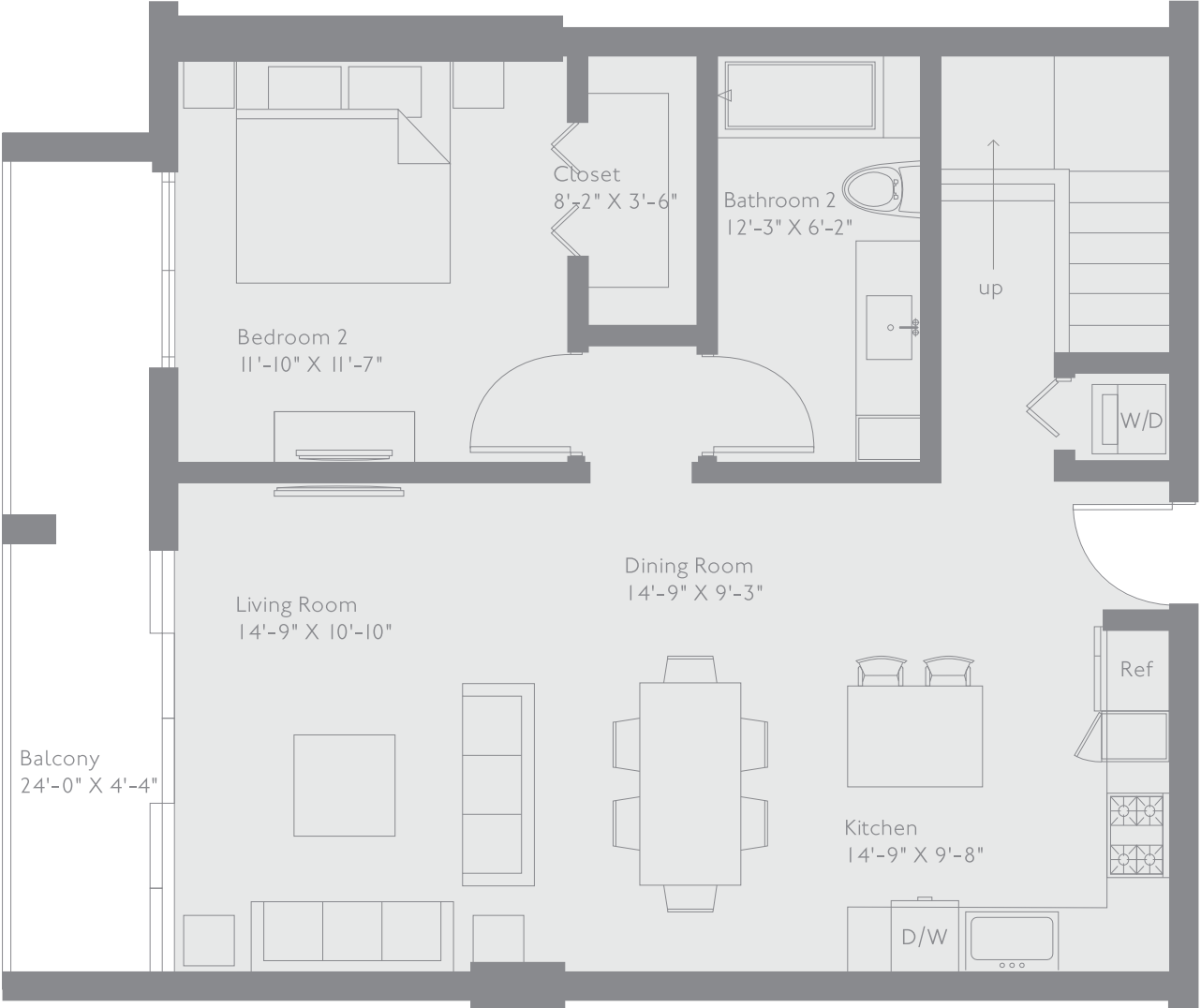
SKETCHES, RENDERINGS, GRAPHIC MATERIALS, PLANS, SPECIFICATIONS, TERMS, CONDITIONS AND STATEMENTS CONTAINED HEREIN ARE PROPOSED ONLY AND ARE BASED ON CONCEPTUAL DEVELOPMENT PLANS THAT ARE SUBJECT TO ARCHITECTURAL AND OTHER REVISIONS AT THE SOLE DISCRETION OF THE DEVELOPER, BUILDER, ARCHITECT, OR AS MAY BE REQUIRED BY LAW, AND SHOULD NOT BE RELIED UPON. NO GUARANTEES OR REPRESENTATIONS ARE MADE THAT ANY MATTERS CONTAINED HEREIN SHALL BE PROVIDED. FLOOR PLANS MAY NOT BE TO SCALE. ANY FURNITURE, APPLIANCES OR ITEMS DEPICTED HEREIN ARE SHOWN FOR ARTISTIC AND ILLUSTRATIVE PURPOSES ONLY AND ARE NOT INCLUDED IN THE PURCHASE AND SALE OF THE UNIT. DIMENSIONS ARE BASED ON THE DEFINITION OF THE UNIT AS PROVIDED IN THE DECLARATION AND THE FLORIDA ADMINISTRATIVE CODE, AS SUCH THEY INCLUDE ONLY THE INTERIOR AIRSPACE BETWEEN PERIMETER WALLS AND EXCLUDE INTERIOR STRUCTURAL COMPONENTS. HOWEVER, MEASUREMENTS OF THE ROOMS SET FORTH ON ANY FLOOR PLAN ARE GENERALLY TAKEN FROM THE GREATEST POINT OF EACH GIVEN ROOM (AS IF THE ROOM WAS A PERFECT RECTANGLE), WITHOUT REGARD FOR ANY CUTOUTS. ACCORDINGLY, THE AREA OF THE ACTUAL ROOM WILL TYPICALLY BE SMALLER THAN THE PRODUCT OBTAINED BY MULTIPLYING THE STATED LENGTH TIMES WIDTH. ALL DIMENSIONS ARE APPROXIMATE AND MAY VARY FROM ACTUAL CONSTRUCTION. THE RENDERINGS ILLUSTRATE AND DEPICT A LIFESTYLE AND MAY INCLUDE OPTIONS, EXTRAS, AMENITIES AND FEATURES WHICH ARE SUBJECT TO CHANGE WITHOUT NOTICE AND MAY NOT BE AVAILABLE. RENDERINGS MAY DEPICT VIEWS THAT ARE NOT AVAILABLE. NO GUARANTEES OR REPRESENTATIONS ARE MADE AS TO CURRENT OR FUTURE VIEWS FROM ANY UNIT. BUYERS SHOULD CHECK WITH THE SALES CENTER FOR THE MOST CURRENT PRICING. THIS IS NOT INTENDED TO BE AN OFFER TO SELL, OR SOLICITATION TO BUY CONDOMINIUM UNITS WHERE PROHIBITED BY LAW. SUCH AN OFFER SHALL ONLY BE MADE PURSUANT TO THE PROSPECTUS (OFFERING CIRCULAR) FOR THE CONDOMINIUM AND NO STATEMENTS OR DEPICTIONS SHOULD BE RELIED UPON UNLESS MADE IN THE PROSPECTUS OR YOUR PURCHASE AGREEMENT. ALL REAL ESTATE SHOWN HEREIN IS SUBJECT TO THE US FEDERAL FAIR HOUSING ACT OF 1998.



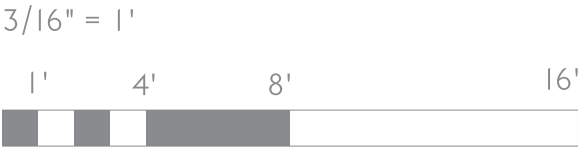
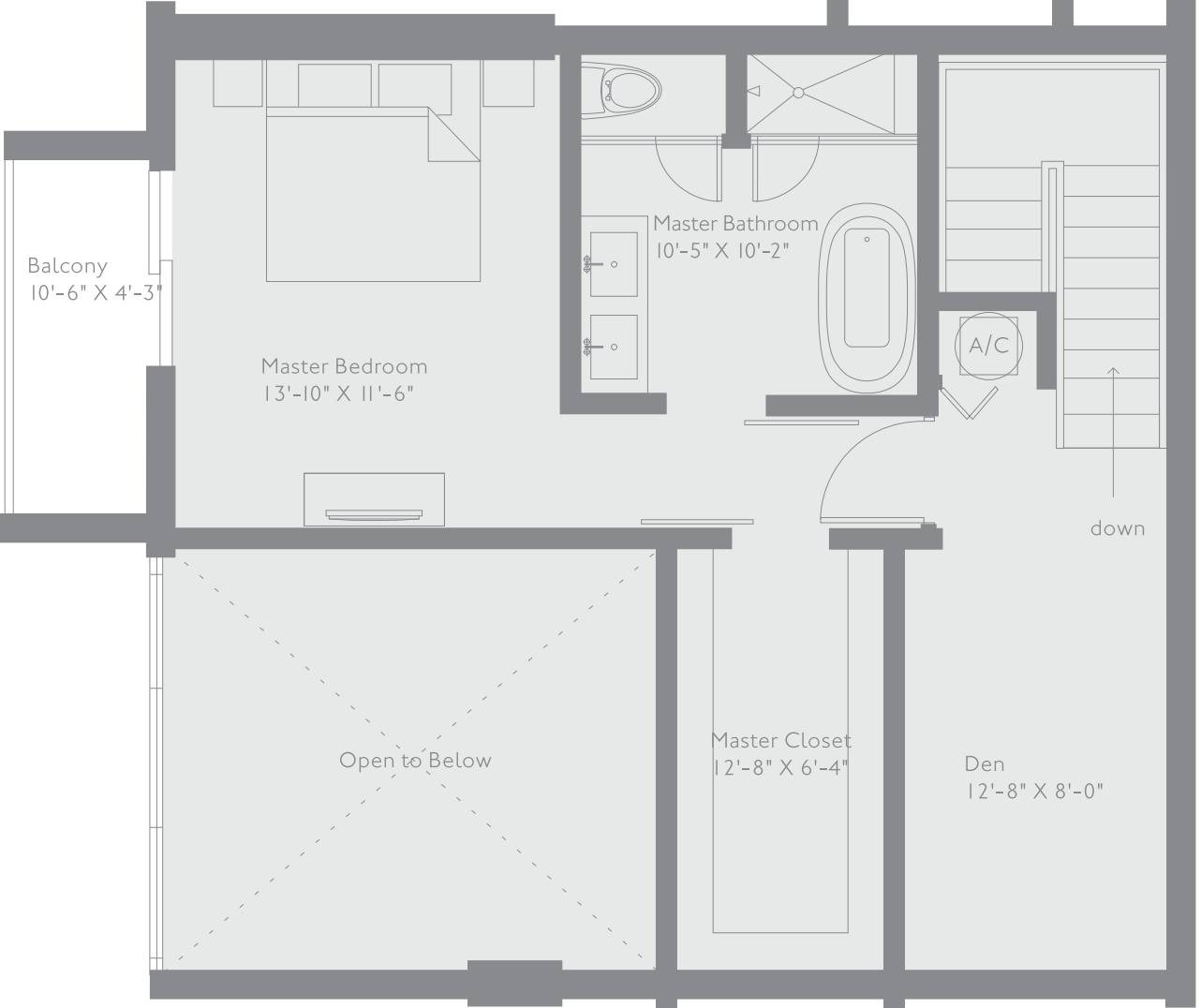
Arbor 3034



Level One



Level Two



N

h

2 Bedrooms  
2 Bathrooms  
20 ft Ceilings  
Den

Interior  
1475 ft<sup>2</sup> / 137 m<sup>2</sup>

Exterior  
155 ft<sup>2</sup> / 14 m<sup>2</sup>

Total  
1630 ft<sup>2</sup> / 151 m<sup>2</sup>

Total with Rooftop Terrace  
(PH Residences Only)  
2609 ft<sup>2</sup>

Residences –  
LPH 2 LPH 3

Floor –  
2 + 3  
4 + 5 + Roof

