



ST REGIS
SUNNY ISLES BEACH ♦ MIAMI
THE RESIDENCES

Collins Ave / AIA

Residence 02

North Tower / LEVELS 19 TO 32

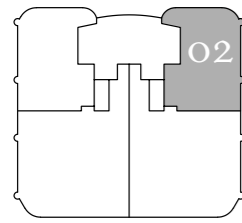
2 BEDROOMS + DEN

3 BATHROOMS

1,797 SF / 167 SM INTERIOR

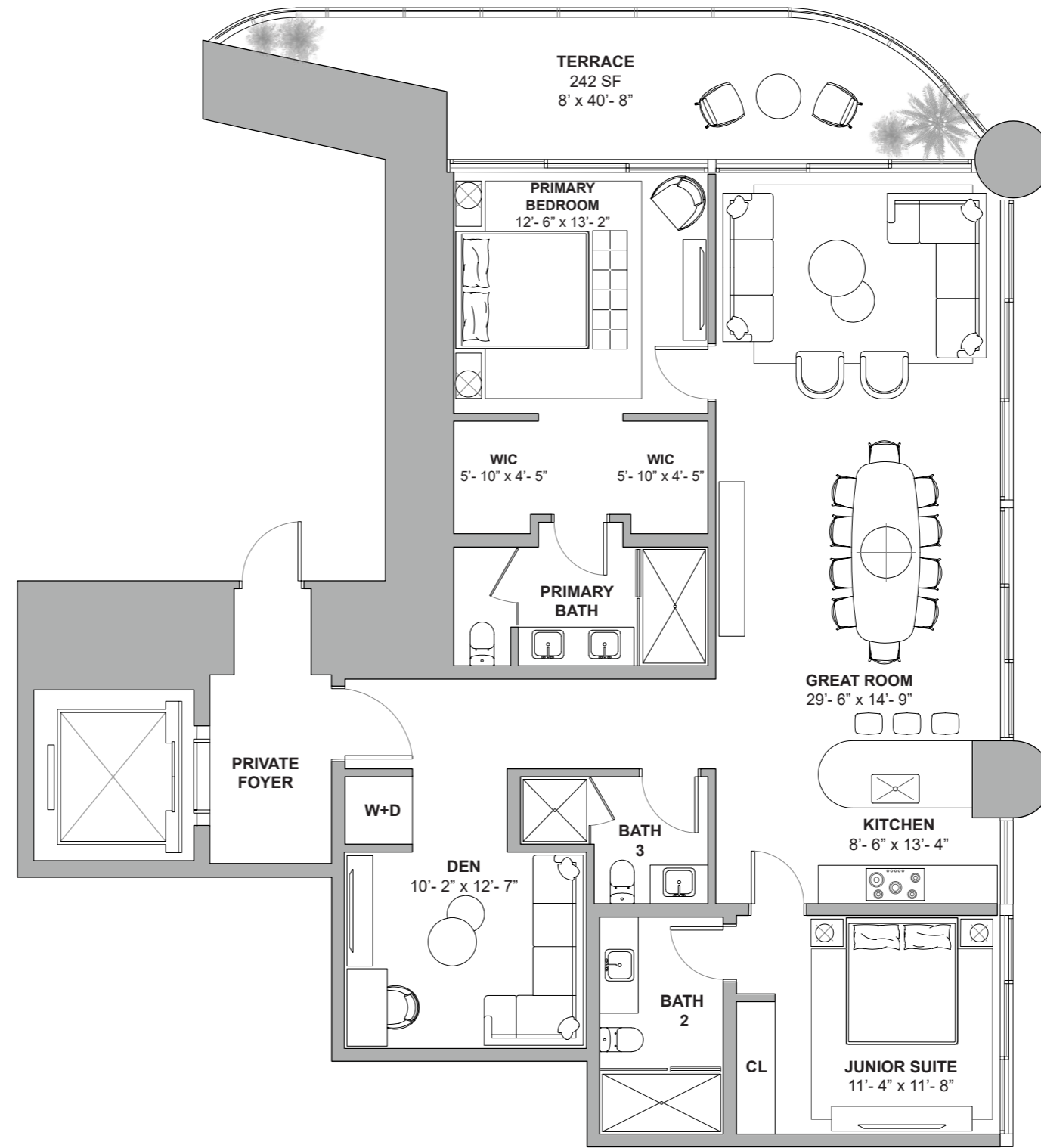
242 SF / 22 SM EXTERIOR

2,039 SF / 189 SM TOTAL



Atlantic Ocean

18801 Collins Ave, Sunny Isles Beach, FL 33160



Atlantic Ocean

DEVELOPMENT AND SALES

FORTUNE
INTERNATIONAL
GROUP

CHATEAU
GROUP

The St. Regis Residences, Sunny Isles Beach are not owned, developed or sold by Marriott International, Inc. or its affiliates ("MI"). La Playa Beach Associates, LLC uses the St. Regis marks under a license from MI, which has not confirmed the accuracy of any of the statements or representations made herein. This project is being developed by La Playa Beach Associates, LLC, which has the right to use the trademark names and logos of Fortune International Group and Chateau Group. ORAL REPRESENTATIONS CANNOT BE RELIED UPON AS CORRECTLY STATING THE REPRESENTATIONS OF THE DEVELOPER. FOR CORRECT REPRESENTATIONS, MAKE REFERENCE TO THIS BROCHURE AND TO THE DOCUMENTS REQUIRED BY SECTION 718.503, FLORIDA STATUTES, TO BE FURNISHED BY A DEVELOPER TO A BUYER OR LESSEE. This is not intended to be an offer to sell, or solicitation to buy, condominium units to residents of any jurisdiction where prohibited by law, and your eligibility for purchase will depend upon your state of residency. Stated dimensions are measured to the exterior boundaries of the exterior walls and the centerline of interior demising walls and in fact vary from the dimensions that would be determined by using the description and definition of the "Unit" set forth in the Declaration (which generally only includes the interior airspace between the perimeter walls and excludes interior structural components). For your reference, the area of the Unit, determined in accordance with those defined unit boundaries, is set forth on Exhibit "3" to the Declaration. Note that measurements of rooms set forth on this floor plan are generally taken at the greatest points of each given room (as if the room were a perfect rectangle), without regard for any cutouts. Accordingly, the area of the actual room will typically be smaller than the product obtained by multiplying the stated length times width. All dimensions are approximate and may vary with actual construction, and all floor plans and development plans are subject to change. Furniture is not included with the sale of the Units.



ST REGIS
SUNNY ISLES BEACH ♦ MIAMI
THE RESIDENCES

Collins Ave / AIA

Residence 03

North Tower / LEVELS 19 TO 32

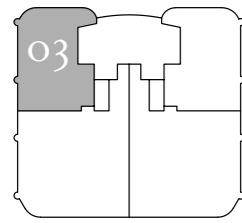
2 BEDROOMS + DEN

3 BATHROOMS

1,797 SF / 167 SM INTERIOR

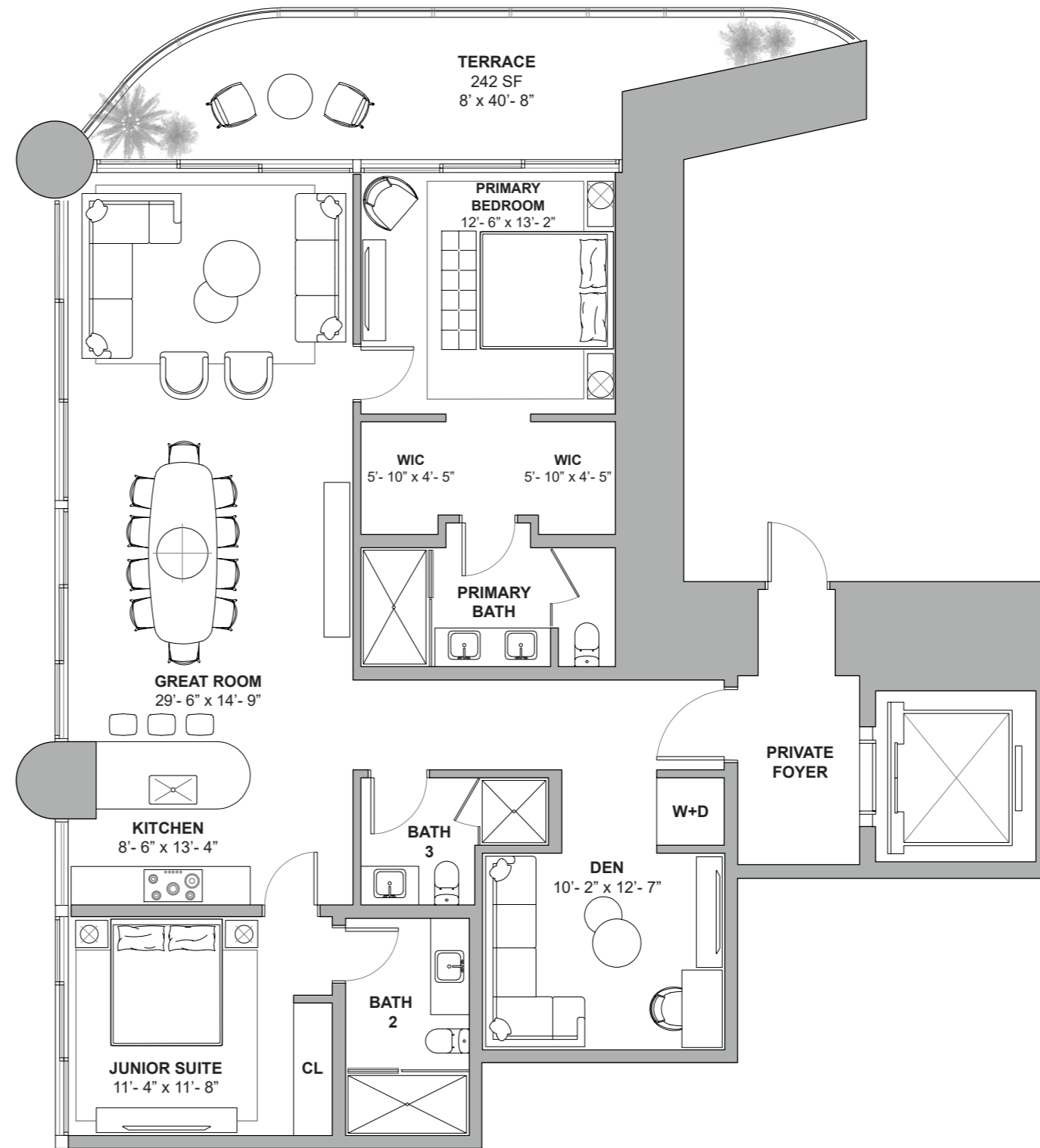
242 SF / 22 SM EXTERIOR

2,039 SF / 189 SM TOTAL



Atlantic Ocean

18801 Collins Ave, Sunny Isles Beach, FL 33160



Atlantic Ocean

DEVELOPMENT AND SALES

FORTUNE
INTERNATIONAL
GROUP



The St. Regis Residences, Sunny Isles Beach are not owned, developed or sold by Marriott International, Inc. or its affiliates ("MI"). La Playa Beach Associates, LLC uses the St. Regis marks under a license from MI, which has not confirmed the accuracy of any of the statements or representations made herein. This project is being developed by La Playa Beach Associates, LLC, which has the right to use the trademark names and logos of Fortune International Group and Chateau Group. ORAL REPRESENTATIONS CANNOT BE RELIED UPON AS CORRECTLY STATING THE REPRESENTATIONS OF THE DEVELOPER. FOR CORRECT REPRESENTATIONS, MAKE REFERENCE TO THIS BROCHURE AND TO THE DOCUMENTS REQUIRED BY SECTION 718.503, FLORIDA STATUTES, TO BE FURNISHED BY A DEVELOPER TO A BUYER OR LESSEE. This is not intended to be an offer to sell, or solicitation to buy, condominium units to residents of any jurisdiction where prohibited by law, and your eligibility for purchase will depend upon your state of residency. Stated dimensions are measured to the exterior boundaries of the exterior walls and the centerline of interior demising walls and in fact vary from the dimensions that would be determined by using the description and definition of the "Unit" set forth in the Declaration (which generally only includes the interior airspace between the perimeter walls and excludes interior structural components). For your reference, the area of the Unit, determined in accordance with those defined unit boundaries, is set forth on Exhibit "3" to the Declaration. Note that measurements of rooms set forth on this floor plan are generally taken at the greatest points of each given room (as if the room were a perfect rectangle), without regard for any cutouts. Accordingly, the area of the actual room will typically be smaller than the product obtained by multiplying the stated length times width. All dimensions are approximate and may vary with actual construction, and all floor plans and development plans are subject to change. Furniture is not included with the sale of the Units.



ST REGIS
SUNNY ISLES BEACH ♦ MIAMI
THE RESIDENCES

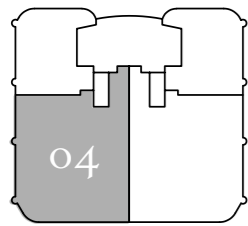
Collins Ave / AIA

SERVICE
ENTRANCE

Residence 04

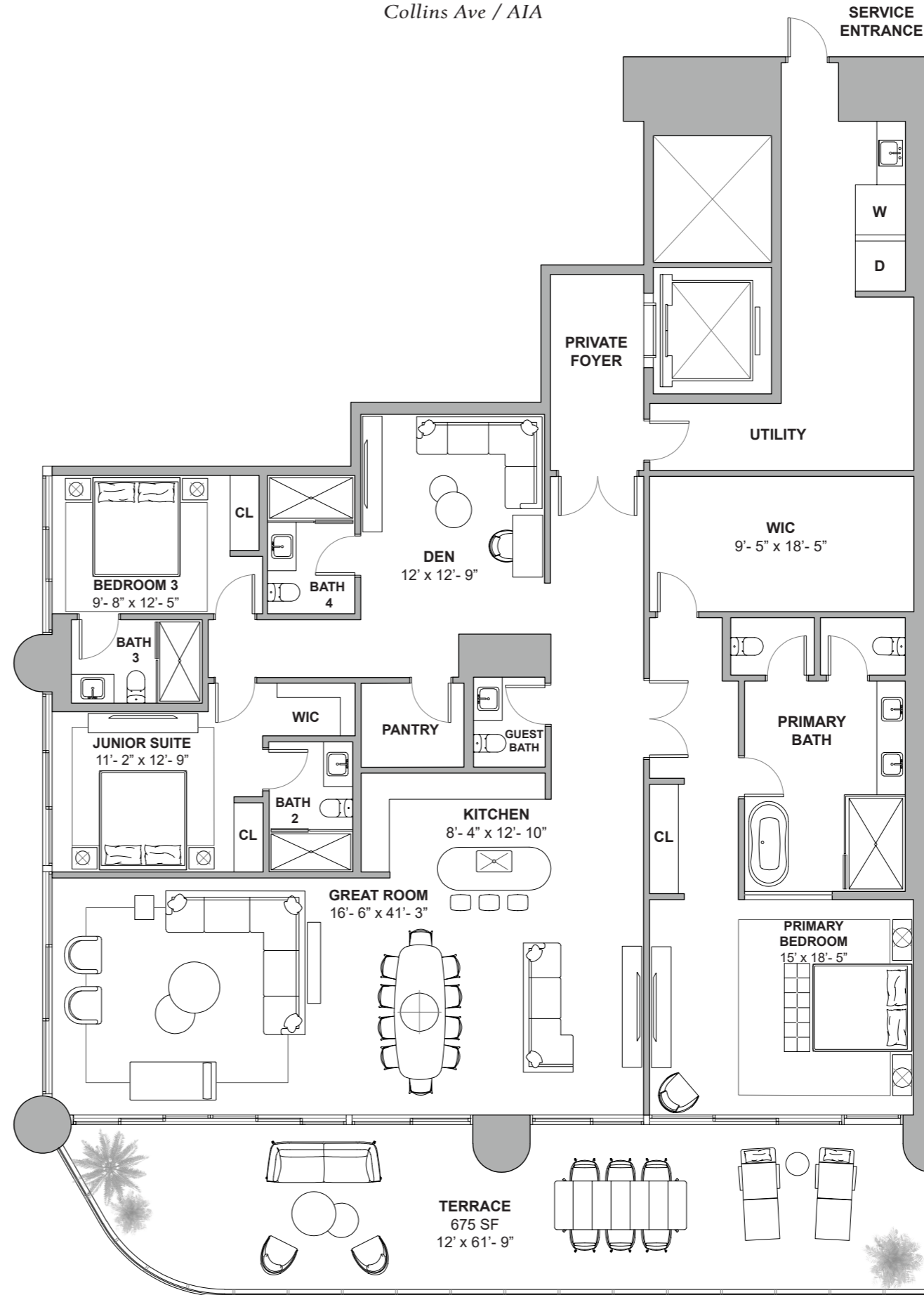
North Tower / LEVES 19 TO 32

3 BEDROOMS + DEN
4.5 BATHROOMS
3,379 SF / 314 SM INTERIOR
675 SF / 63 SM EXTERIOR
4,054 SF / 377 SM TOTAL



Atlantic Ocean

18801 Collins Ave, Sunny Isles Beach, FL 33160



Atlantic Ocean

DEVELOPMENT AND SALES



The St. Regis Residences, Sunny Isles Beach are not owned, developed or sold by Marriott International, Inc. or its affiliates ("MI"). La Playa Beach Associates, LLC uses the St. Regis marks under a license from MI, which has not confirmed the accuracy of any of the statements or representations made herein. This project is being developed by La Playa Beach Associates, LLC, which has the right to use the trademark names and logos of Fortune International Group and Chateau Group. ORAL REPRESENTATIONS CANNOT BE RELIED UPON AS CORRECTLY STATING THE REPRESENTATIONS OF THE DEVELOPER. FOR CORRECT REPRESENTATIONS, MAKE REFERENCE TO THIS BROCHURE AND TO THE DOCUMENTS REQUIRED BY SECTION 718.503, FLORIDA STATUTES, TO BE FURNISHED BY A DEVELOPER TO A BUYER OR LESSEE. This is not intended to be an offer to sell, or solicitation to buy, condominium units to residents of any jurisdiction where prohibited by law, and your eligibility for purchase will depend upon your state of residency. Stated dimensions are measured to the exterior boundaries of the exterior walls and the centerline of interior demising walls and in fact vary from the dimensions that would be determined by using the description and definition of the "Unit" set forth in the Declaration (which generally only includes the interior airspace between the perimeter walls and excludes interior structural components). For your reference, the area of the Unit, determined in accordance with those defined unit boundaries, is set forth on Exhibit "3" to the Declaration. Note that measurements of rooms set forth on this floor plan are generally taken at the greatest points of each given room (as if the room were a perfect rectangle), without regard for any cutouts. Accordingly, the area of the actual room will typically be smaller than the product obtained by multiplying the stated length times width. All dimensions are approximate and may vary with actual construction, and all floor plans and development plans are subject to change. Furniture is not included with the sale of the Units.



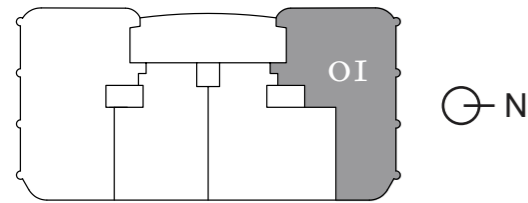
ST REGIS
SUNNY ISLES BEACH ♦ MIAMI
THE RESIDENCES

Collins Ave / AIA

Residence 2901

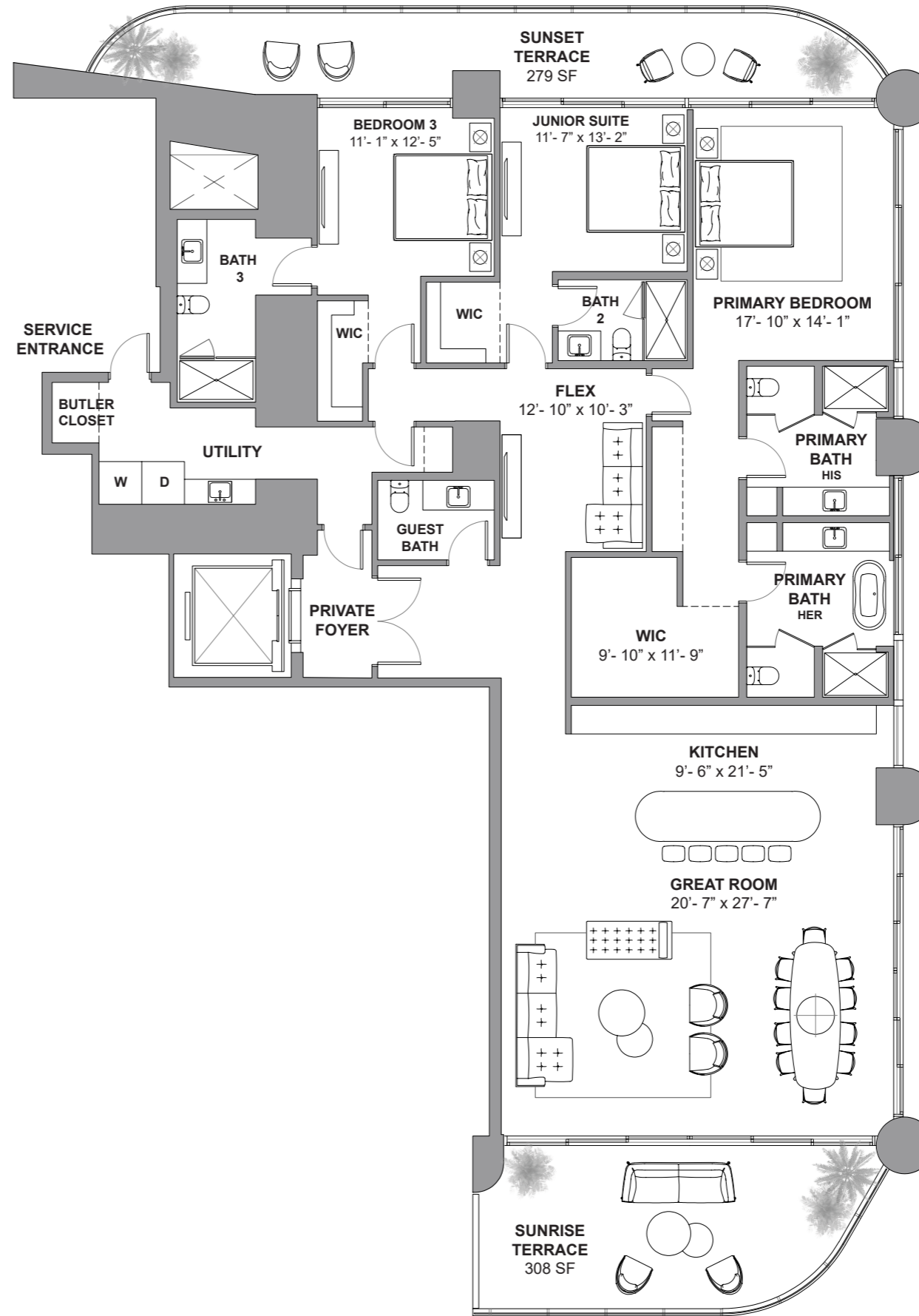
South Tower / Level 29

- 3 BEDROOMS + FLEX
- 4.5 BATHROOMS
- 3,056 SF / 283.9 SM INTERIOR
- 587 SF / 54.5 SM EXTERIOR
- 3,643 SF / 338.4 SM TOTAL



Atlantic Ocean

18801 Collins Ave, Sunny Isles Beach, FL 33160



Atlantic Ocean

DEVELOPMENT AND SALES

FORTUNE
INTERNATIONAL
GROUP

CHATEAU
GROUP

The St. Regis Residences, Sunny Isles Beach are not owned, developed or sold by Marriott International, Inc. or its affiliates ("MI"). La Playa Beach Associates, LLC uses the St. Regis marks under a license from MI, which has not confirmed the accuracy of any of the statements or representations made herein. This project is being developed by La Playa Beach Associates, LLC, which has the right to use the trademark names and logos of Fortune International Group and Chateau Group. ORAL REPRESENTATIONS CANNOT BE RELIED UPON AS CORRECTLY STATING THE REPRESENTATIONS OF THE DEVELOPER. FOR CORRECT REPRESENTATIONS, MAKE REFERENCE TO THIS BROCHURE AND TO THE DOCUMENTS REQUIRED BY SECTION 718.503, FLORIDA STATUTES, TO BE FURNISHED BY A DEVELOPER TO A BUYER OR LESSEE. This is not intended to be an offer to sell, or solicitation to buy, condominium units to residents of any jurisdiction where prohibited by law, and your eligibility for purchase will depend upon your state of residency. Stated dimensions are measured to the exterior boundaries of the exterior walls and the centerline of interior demising walls and in fact vary from the dimensions that would be determined by using the description and definition of the "Unit" set forth in the Declaration (which generally only includes the interior airspace between the perimeter walls and excludes interior structural components). For your reference, the area of the Unit, determined in accordance with those defined unit boundaries, is set forth on Exhibit "3" to the Declaration. Note that measurements of rooms set forth on this floor plan are generally taken at the greatest points of each given room (as if the room were a perfect rectangle), without regard for any cutouts. Accordingly, the area of the actual room will typically be smaller than the product obtained by multiplying the stated length times width. All dimensions are approximate and may vary with actual construction, and all floor plans and development plans are subject to change. Furniture is not included with the sale of the Units.



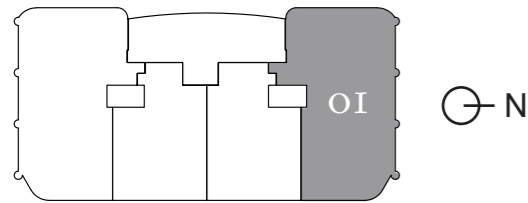
ST REGIS
SUNNY ISLES BEACH ♦ MIAMI
THE RESIDENCES

Collins Ave / AIA

Residence 3501

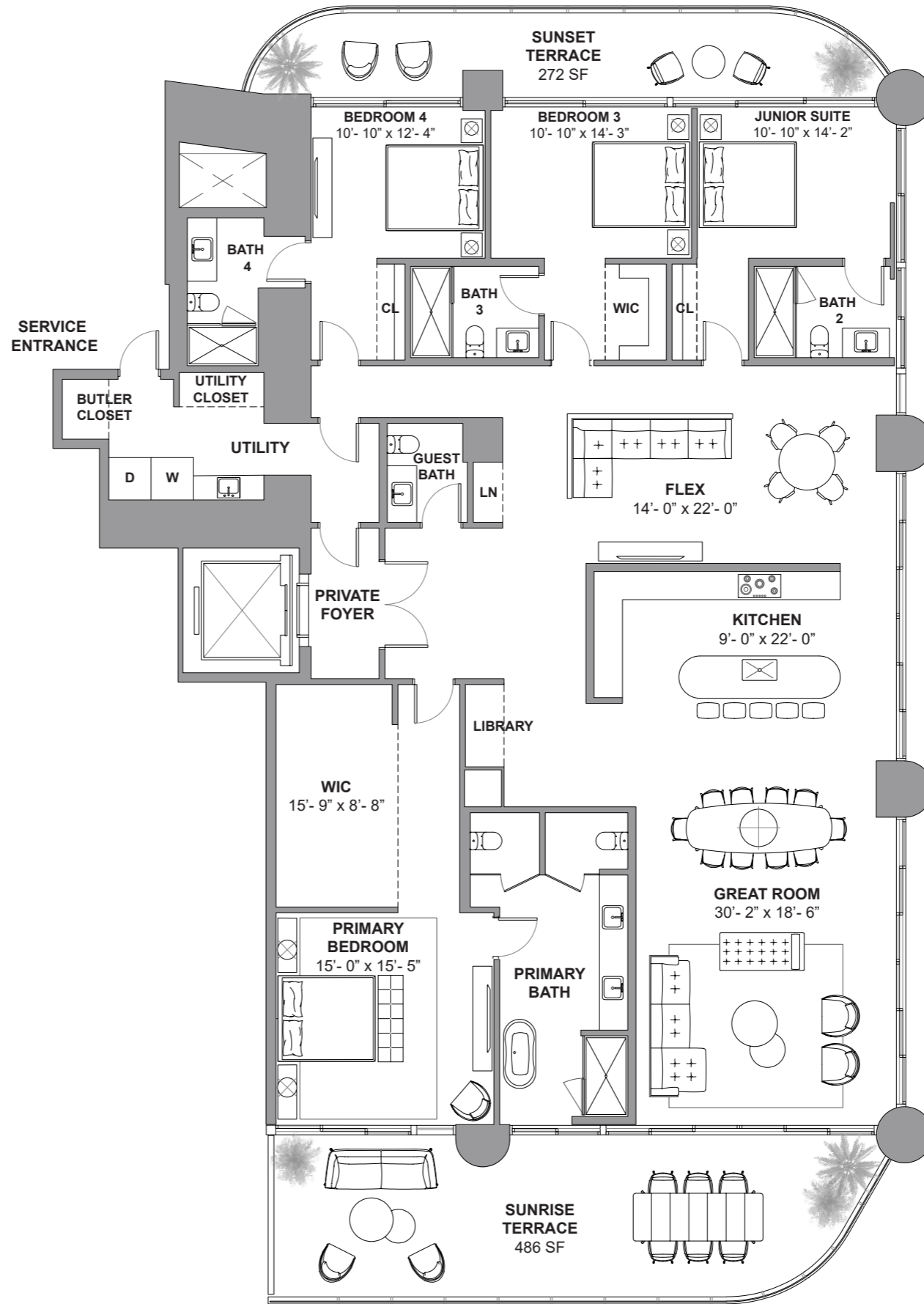
South Tower / Level 35

4 BEDROOMS + FLEX
4.5 BATHROOMS
3,587 SF / 333.2 SM INTERIOR
758 SF / 70.4 SM EXTERIOR
4,345 SF / 403.6 SM TOTAL



Atlantic Ocean

18801 Collins Ave, Sunny Isles Beach, FL 33160



Atlantic Ocean

DEVELOPMENT AND SALES

FORTUNE
INTERNATIONAL
GROUP

CHATEAU
GROUP

The St. Regis Residences, Sunny Isles Beach are not owned, developed or sold by Marriott International, Inc. or its affiliates ("MI"). La Playa Beach Associates, LLC uses the St. Regis marks under a license from MI, which has not confirmed the accuracy of any of the statements or representations made herein. This project is being developed by La Playa Beach Associates, LLC, which has the right to use the trademark names and logos of Fortune International Group and Chateau Group. ORAL REPRESENTATIONS CANNOT BE RELIED UPON AS CORRECTLY STATING THE REPRESENTATIONS OF THE DEVELOPER. FOR CORRECT REPRESENTATIONS, MAKE REFERENCE TO THIS BROCHURE AND TO THE DOCUMENTS REQUIRED BY SECTION 718.503, FLORIDA STATUTES, TO BE FURNISHED BY A DEVELOPER TO A BUYER OR LESSEE. This is not intended to be an offer to sell, or solicitation to buy, condominium units to residents of any jurisdiction where prohibited by law, and your eligibility for purchase will depend upon your state of residency. Stated dimensions are measured to the exterior boundaries of the exterior walls and the centerline of interior demising walls and in fact vary from the dimensions that would be determined by using the description and definition of the "Unit" set forth in the Declaration (which generally only includes the interior airspace between the perimeter walls and excludes interior structural components). For your reference, the area of the Unit, determined in accordance with those defined unit boundaries, is set forth on Exhibit "3" to the Declaration. Note that measurements of rooms set forth on this floor plan are generally taken at the greatest points of each given room (as if the room were a perfect rectangle), without regard for any cutouts. Accordingly, the area of the actual room will typically be smaller than the product obtained by multiplying the stated length times width. All dimensions are approximate and may vary with actual construction, and all floor plans and development plans are subject to change. Furniture is not included with the sale of the Units.



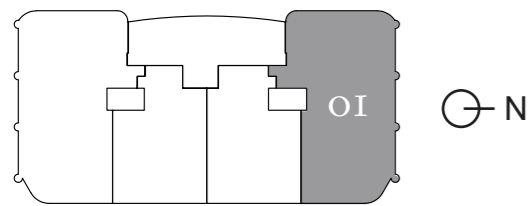
ST REGIS
SUNNY ISLES BEACH ♦ MIAMI
THE RESIDENCES

Collins Ave / AIA

Residence 4001

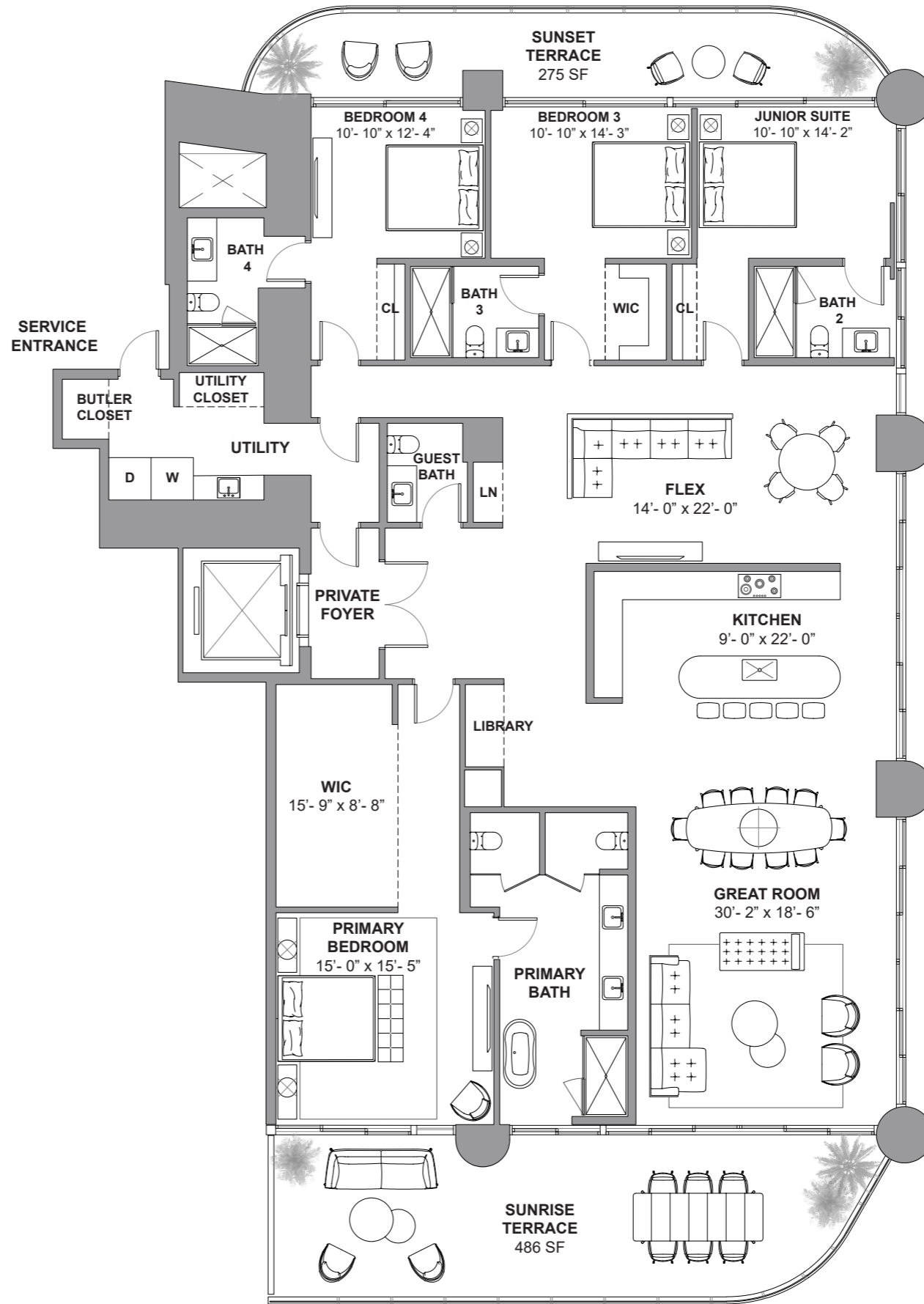
South Tower / Level 40

4 BEDROOMS + FLEX
4.5 BATHROOMS
3,587 SF / 333.2 SM INTERIOR
761 SF / 70.7 SM EXTERIOR
4,348 SF / 403.9 SM TOTAL



Atlantic Ocean

18801 Collins Ave, Sunny Isles Beach, FL 33160



Atlantic Ocean

DEVELOPMENT AND SALES

FORTUNE
INTERNATIONAL
GROUP

CHATEAU
GROUP

The St. Regis Residences, Sunny Isles Beach are not owned, developed or sold by Marriott International, Inc. or its affiliates ("MI"). La Playa Beach Associates, LLC uses the St. Regis marks under a license from MI, which has not confirmed the accuracy of any of the statements or representations made herein. This project is being developed by La Playa Beach Associates, LLC, which has the right to use the trademark names and logos of Fortune International Group and Chateau Group. ORAL REPRESENTATIONS CANNOT BE RELIED UPON AS CORRECTLY STATING THE REPRESENTATIONS OF THE DEVELOPER. FOR CORRECT REPRESENTATIONS, MAKE REFERENCE TO THIS BROCHURE AND TO THE DOCUMENTS REQUIRED BY SECTION 718.503, FLORIDA STATUTES, TO BE FURNISHED BY A DEVELOPER TO A BUYER OR LESSEE. This is not intended to be an offer to sell, or solicitation to buy, condominium units to residents of any jurisdiction where prohibited by law, and your eligibility for purchase will depend upon your state of residency. Stated dimensions are measured to the exterior boundaries of the exterior walls and the centerline of interior demising walls and in fact vary from the dimensions that would be determined by using the description and definition of the "Unit" set forth in the Declaration (which generally only includes the interior airspace between the perimeter walls and excludes interior structural components). For your reference, the area of the Unit, determined in accordance with those defined unit boundaries, is set forth on Exhibit "3" to the Declaration. Note that measurements of rooms set forth on this floor plan are generally taken at the greatest points of each given room (as if the room were a perfect rectangle), without regard for any cutouts. Accordingly, the area of the actual room will typically be smaller than the product obtained by multiplying the stated length times width. All dimensions are approximate and may vary with actual construction, and all floor plans and development plans are subject to change. Furniture is not included with the sale of the Units.



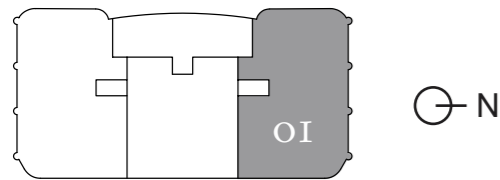
ST REGIS
SUNNY ISLES BEACH ♦ MIAMI
THE RESIDENCES

Collins Ave / AIA

Residence 4501

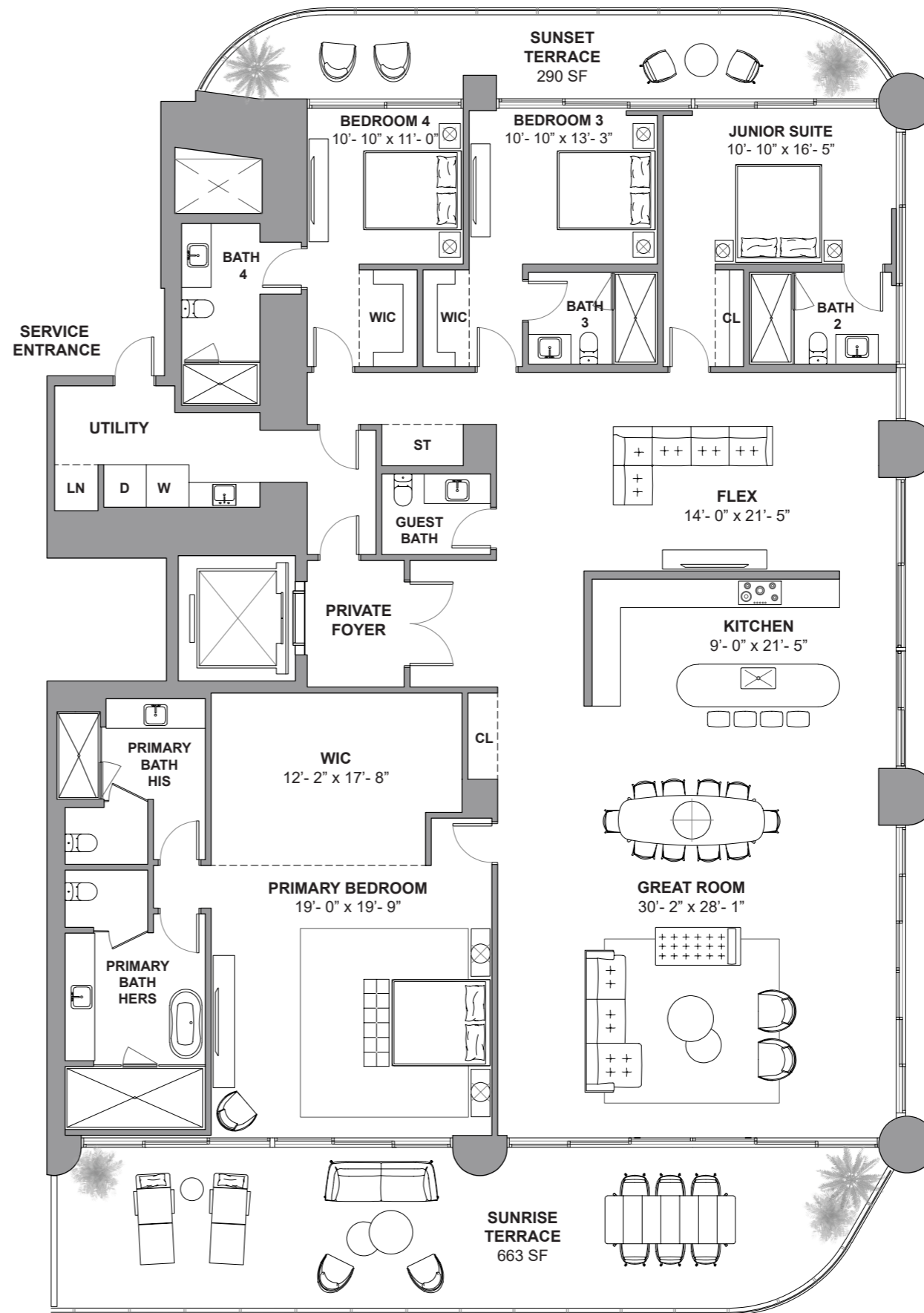
South Tower / Level 45

4 BEDROOMS + FLEX
5.5 BATHROOMS
4,113 SF / 382.1 SM INTERIOR
953 SF / 88.5 SM EXTERIOR
5,066 SF / 470.6 SM TOTAL



Atlantic Ocean

18801 Collins Ave, Sunny Isles Beach, FL 33160



Atlantic Ocean

DEVELOPMENT AND SALES

FORTUNE
INTERNATIONAL
GROUP

CHATEAU
GROUP

The St. Regis Residences, Sunny Isles Beach are not owned, developed or sold by Marriott International, Inc. or its affiliates ("MI"). La Playa Beach Associates, LLC uses the St. Regis marks under a license from MI, which has not confirmed the accuracy of any of the statements or representations made herein. This project is being developed by La Playa Beach Associates, LLC, which has the right to use the trademark names and logos of Fortune International Group and Chateau Group. ORAL REPRESENTATIONS CANNOT BE RELIED UPON AS CORRECTLY STATING THE REPRESENTATIONS OF THE DEVELOPER. FOR CORRECT REPRESENTATIONS, MAKE REFERENCE TO THIS BROCHURE AND TO THE DOCUMENTS REQUIRED BY SECTION 718.503, FLORIDA STATUTES, TO BE FURNISHED BY A DEVELOPER TO A BUYER OR LESSEE. This is not intended to be an offer to sell, or solicitation to buy, condominium units to residents of any jurisdiction where prohibited by law, and your eligibility for purchase will depend upon your state of residency. Stated dimensions are measured to the exterior boundaries of the exterior walls and the centerline of interior demising walls and in fact vary from the dimensions that would be determined by using the description and definition of the "Unit" set forth in the Declaration (which generally only includes the interior airspace between the perimeter walls and excludes interior structural components). For your reference, the area of the Unit, determined in accordance with those defined unit boundaries, is set forth on Exhibit "3" to the Declaration. Note that measurements of rooms set forth on this floor plan are generally taken at the greatest points of each given room (as if the room were a perfect rectangle), without regard for any cutouts. Accordingly, the area of the actual room will typically be smaller than the product obtained by multiplying the stated length times width. All dimensions are approximate and may vary with actual construction, and all floor plans and development plans are subject to change. Furniture is not included with the sale of the Units.



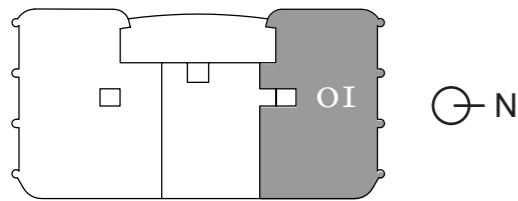
ST REGIS
SUNNY ISLES BEACH ♦ MIAMI
THE RESIDENCES

Collins Ave / AIA

Residence 5101

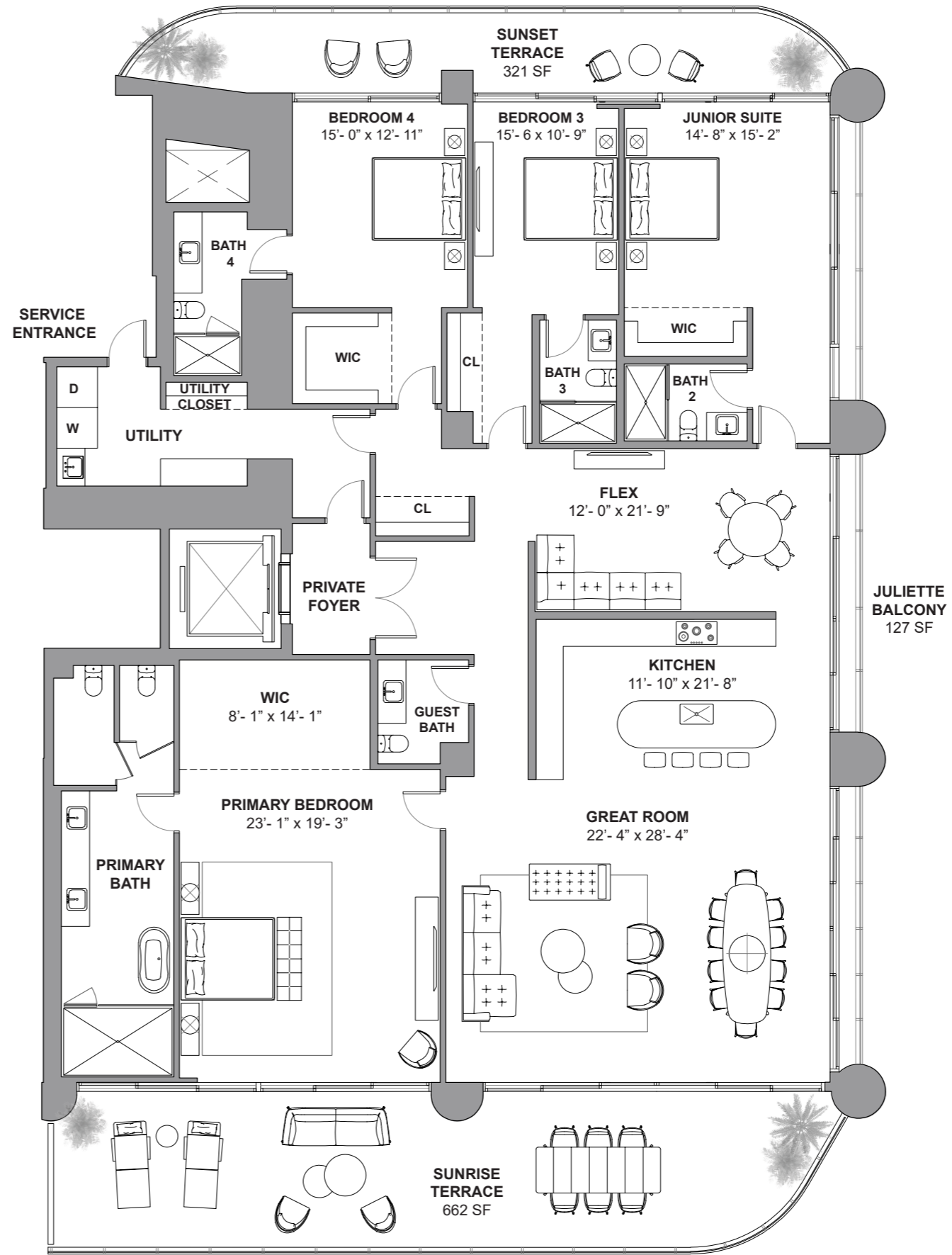
South Tower / Level 51

4 BEDROOMS + FLEX
4.5 BATHROOMS
3,960 SF / 367.9 SM INTERIOR
1,110 SF / 103.1 SM EXTERIOR
5,070 SF / 471 SM TOTAL



Atlantic Ocean

18801 Collins Ave, Sunny Isles Beach, FL 33160



Atlantic Ocean

DEVELOPMENT AND SALES

FORTUNE
INTERNATIONAL
GROUP

CHÂTEAU
GROUP

The St. Regis Residences, Sunny Isles Beach are not owned, developed or sold by Marriott International, Inc. or its affiliates ("MI"). La Playa Beach Associates, LLC uses the St. Regis marks under a license from MI, which has not confirmed the accuracy of any of the statements or representations made herein. This project is being developed by La Playa Beach Associates, LLC, which has the right to use the trademark names and logos of Fortune International Group and Chateau Group. ORAL REPRESENTATIONS CANNOT BE RELIED UPON AS CORRECTLY STATING THE REPRESENTATIONS OF THE DEVELOPER. FOR CORRECT REPRESENTATIONS, MAKE REFERENCE TO THIS BROCHURE AND TO THE DOCUMENTS REQUIRED BY SECTION 718.503, FLORIDA STATUTES, TO BE FURNISHED BY A DEVELOPER TO A BUYER OR LESSEE. This is not intended to be an offer to sell, or solicitation to buy, condominium units to residents of any jurisdiction where prohibited by law, and your eligibility for purchase will depend upon your state of residency. Stated dimensions are measured to the exterior boundaries of the exterior walls and the centerline of interior demising walls and in fact vary from the dimensions that would be determined by using the description and definition of the "Unit" set forth in the Declaration (which generally only includes the interior airspace between the perimeter walls and excludes interior structural components). For your reference, the area of the Unit, determined in accordance with those defined unit boundaries, is set forth on Exhibit "3" to the Declaration. Note that measurements of rooms set forth on this floor plan are generally taken at the greatest points of each given room (as if the room were a perfect rectangle), without regard for any cutouts. Accordingly, the area of the actual room will typically be smaller than the product obtained by multiplying the stated length times width. All dimensions are approximate and may vary with actual construction, and all floor plans and development plans are subject to change. Furniture is not included with the sale of the Units.



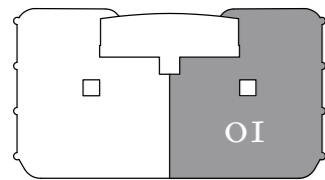
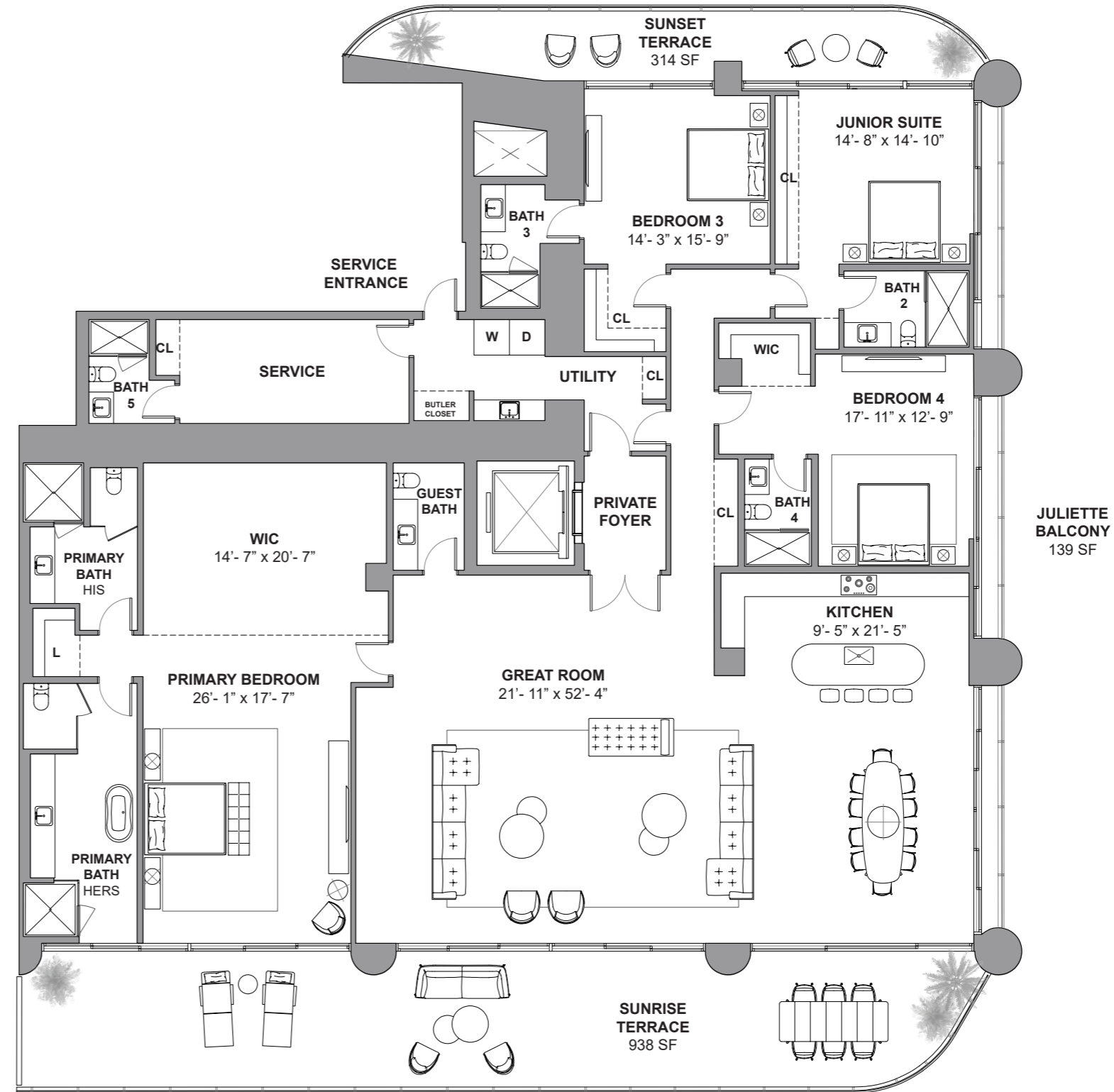
ST REGIS
SUNNY ISLES BEACH ♦ MIAMI
THE RESIDENCES

Collins Ave / AIA

Residence 5601

South Tower / Level 56

4 BEDROOMS
6.5 BATHROOMS
5,135 SF / 477 SM INTERIOR
1,391 SF / 129.2 SM EXTERIOR
6,526 SF / 606.2 SM TOTAL



Atlantic Ocean

18801 Collins Ave, Sunny Isles Beach, FL 33160

Atlantic Ocean

DEVELOPMENT AND SALES
FORTUNE INTERNATIONAL GROUP
CHATEAU GROUP

The St. Regis Residences, Sunny Isles Beach are not owned, developed or sold by Marriott International, Inc. or its affiliates ("MI"). La Playa Beach Associates, LLC uses the St. Regis marks under a license from MI, which has not confirmed the accuracy of any of the statements or representations made herein. This project is being developed by La Playa Beach Associates, LLC, which has the right to use the trademark names and logos of Fortune International Group and Chateau Group. ORAL REPRESENTATIONS CANNOT BE RELIED UPON AS CORRECTLY STATING THE REPRESENTATIONS OF THE DEVELOPER. FOR CORRECT REPRESENTATIONS, MAKE REFERENCE TO THIS BROCHURE AND TO THE DOCUMENTS REQUIRED BY SECTION 718.503, FLORIDA STATUTES, TO BE FURNISHED BY A DEVELOPER TO A BUYER OR LESSEE. This is not intended to be an offer to sell, or solicitation to buy, condominium units to residents of any jurisdiction where prohibited by law, and your eligibility for purchase will depend upon your state of residency. Stated dimensions are measured to the exterior boundaries of the exterior walls and the centerline of interior demising walls and in fact vary from the dimensions that would be determined by using the description and definition of the "Unit" set forth in the Declaration (which generally only includes the interior airspace between the perimeter walls and excludes interior structural components). For your reference, the area of the Unit, determined in accordance with those defined unit boundaries, is set forth on Exhibit "3" to the Declaration. Note that measurements of rooms set forth on this floor plan are generally taken at the greatest points of each given room (as if the room were a perfect rectangle), without regard for any cutouts. Accordingly, the area of the actual room will typically be smaller than the product obtained by multiplying the stated length times width. All dimensions are approximate and may vary with actual construction, and all floor plans and development plans are subject to change. Furniture is not included with the sale of the Units.