

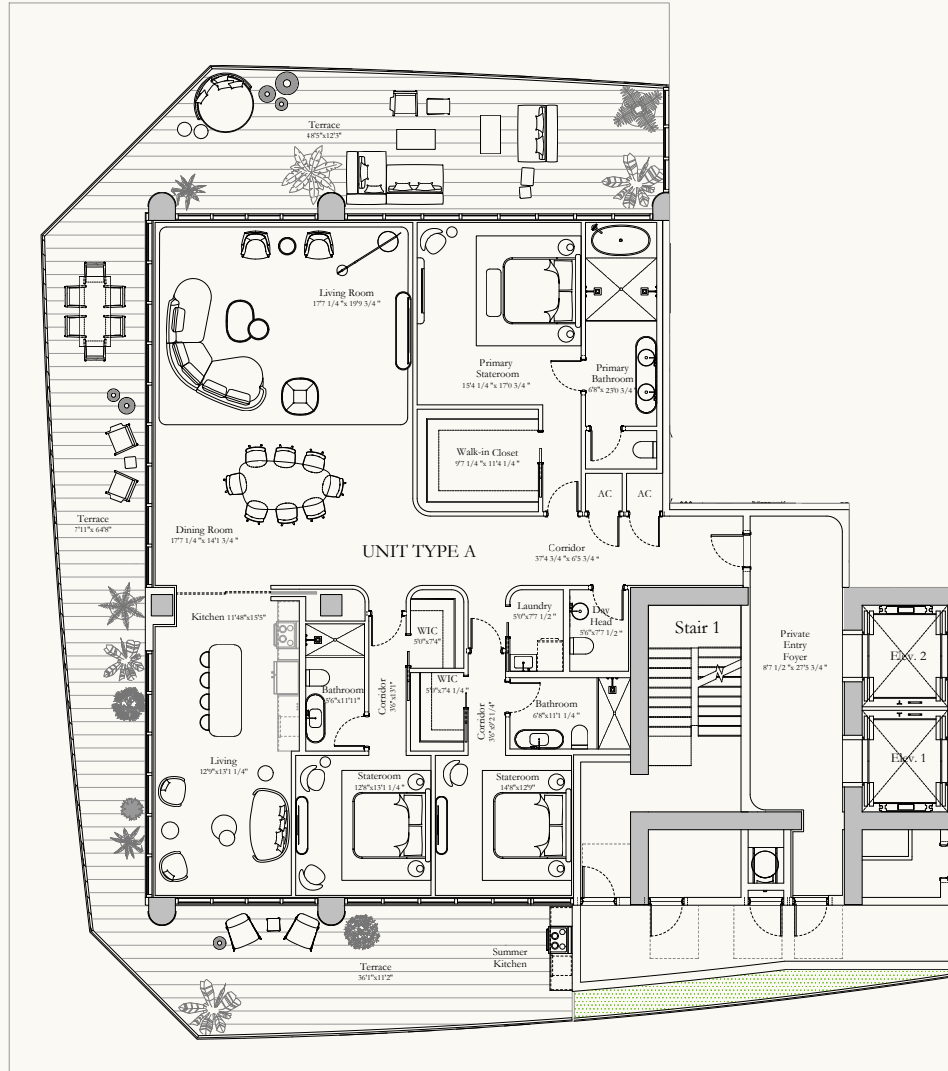


FLOORPLANS

Riva

RESIDENZE

FORT LAUDERDALE

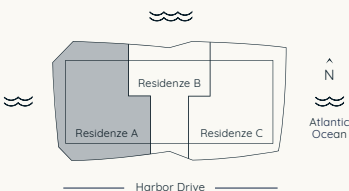


< W

E >

Residence A

LEVELS 6-16



3 BEDROOMS 3.5 BATHROOMS

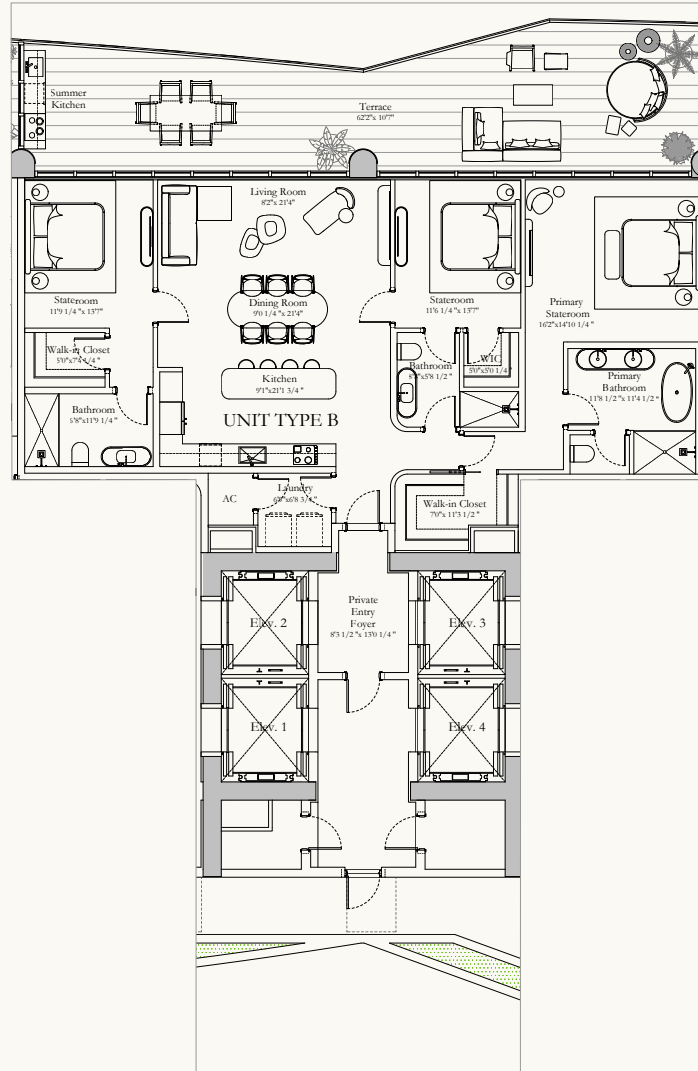
INTERIOR TERRACES 3,395 SQ. FT. 1,687 TO 1,839 SQ. FT.

ORAL REPRESENTATIONS CANNOT BE RELIED UPON AS CORRECTLY STATING REPRESENTATIONS OF THE DEVELOPER. FOR CORRECT REPRESENTATIONS, MAKE REFERENCE TO THIS BROCHURE AND TO THE DOCUMENTS REQUIRED BY 718.503, FLORIDA STATUTES, TO BE FURNISHED BY A DEVELOPER TO A BUYER OR LESSEE. The name of the Condominium is Ocean Harbor Condominium. The Condominium is developed by Ocean Harbor Properties, LLC, a Florida limited liability company ("Developer"), which has the right to use the name Riva Residence under a license from Ferretti S.p.A. (the "Brand Owner"). The Brand Owner is not the Developer and there is no guarantee that the Condominium will always be known as Riva Residence and no party may rely on any such guarantee. This Condominium is being offered by Ocean Harbor Properties, LLC (the "Developer"). The square footage stated herein is approximate. Stated dimensions are measured to the exterior boundaries of the exterior walls and the centerline of interior demising walls and in fact vary from the dimensions that would be determined by using the description and definition of the "Unit" set forth in the Declaration (which generally only includes the interior airspace between the perimeter walls and excludes interior structural components). Note that measurements of rooms set forth on this floor plan are generally taken at the greatest points of each given room (as if the room were a perfect rectangle) without regard for any cutouts. Accordingly, the area of the actual room will typically be smaller than the product obtained by multiplying the stated length times width. All dimensions are approximate and may vary with actual construction, and all floor plans and development plans are subject to change. The size and configuration of balconies and terraces and windows varies throughout the building. For the actual size and configuration of the balcony and windows for your unit consult your Offering documents. All depictions of furnishings, appliances, built-ins, counters, and other matters of detail, including, without limitation, items of finish and decoration, are conceptual only and are not necessarily included in each Unit. The furniture layout and the use of space illustrated are suggested uses only and not intended to guaranty any specific use of space or accommodation of specific furnishings. The furnishings, design features, fixture and decor illustrated are conceptual only and may not be included with a unit purchase. Consult your prospectus and Purchase Agreement to learn what is included with a unit purchase and to review the unit square footage calculation method to be relied upon, which is set forth in the prospectus. This is not intended to be an offer to sell, or solicitation to buy, condominium units to residents of any jurisdiction where prohibited by law, and your eligibility for purchase will depend upon your state of residency. The offering is made only by the prospectus for the condominium and no statement should be relied upon if not made in the prospectus.

Riva

RESIDENZE

FORT LAUDERDALE

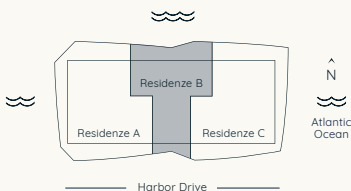


< W

E >

Residence B

LEVELS 6-16



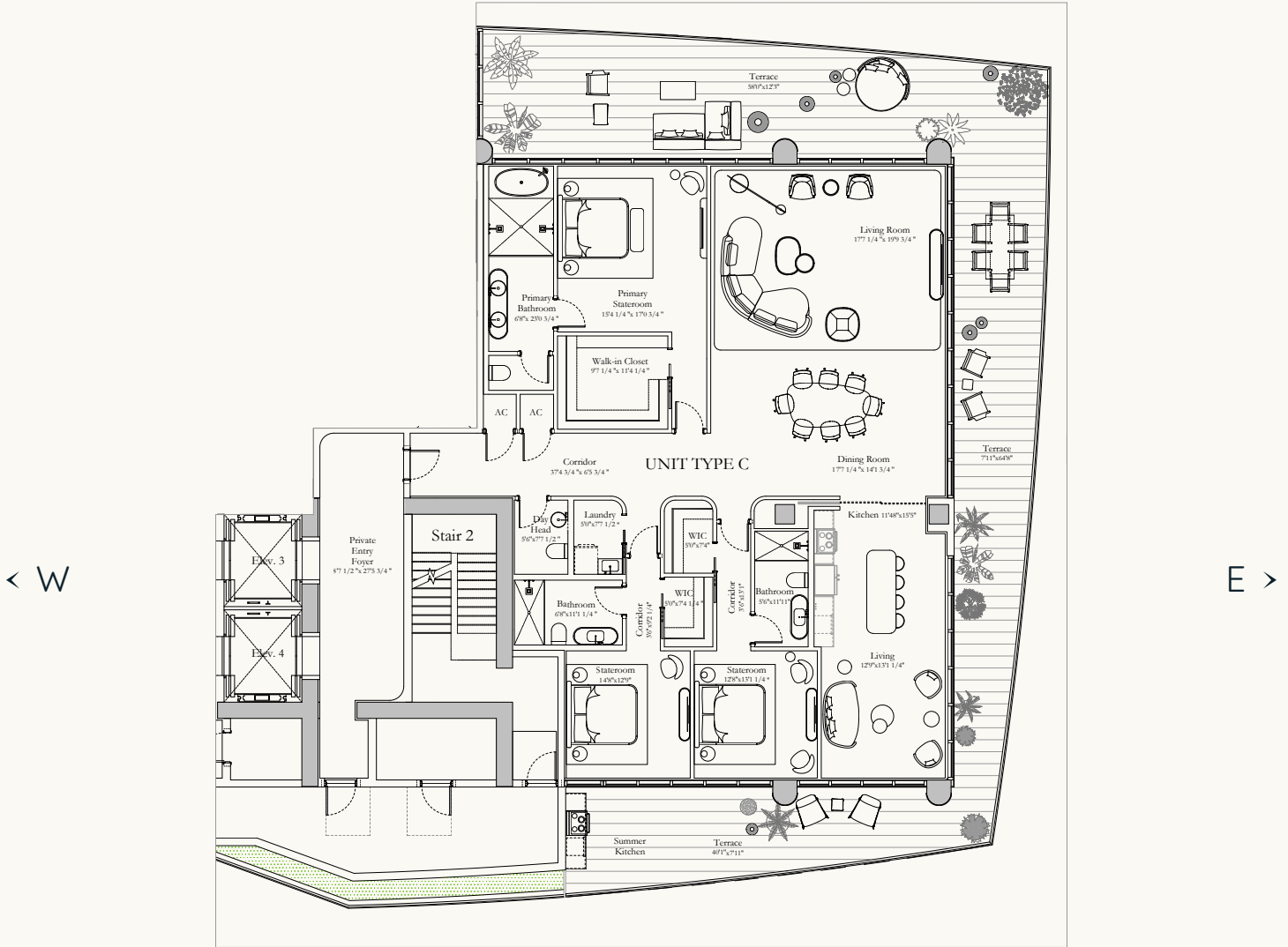
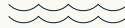
3 BEDROOMS 3 BATHROOMS

INTERIOR TERRACES 2,070 SQ. FT. 732 TO 756 SQ. FT.

ORAL REPRESENTATIONS CANNOT BE RELIED UPON AS CORRECTLY STATING REPRESENTATIONS OF THE DEVELOPER. FOR CORRECT REPRESENTATIONS, MAKE REFERENCE TO THIS BROCHURE AND TO THE DOCUMENTS REQUIRED BY 718.503, FLORIDA STATUTES, TO BE FURNISHED BY A DEVELOPER TO A BUYER OR LESSEE. The home of the Condominium is Ocean Harbor Condominium. The Condominium is developed by Ocean Harbor Properties, LLC, a Florida limited liability company ("Developer"), which has the right to use the name Riva Residence under a license from Ferretti S.p.A. (the "Brand Owner"). The Brand Owner is not the Developer and there is no guarantee that the Condominium will always be known as Riva Residence and no party may rely on any such guarantee. This Condominium is being offered by Ocean Harbor Properties, LLC (the "Developer"). The square footage stated herein is approximate. Stated dimensions are measured to the exterior boundaries of the exterior walls and the centerline of interior demising walls and in fact vary from the dimensions that would be determined by using the description and definition of the "Unit" set forth in the Declaration (which generally only includes the interior airspace between the perimeter walls and excludes interior structural components). Note that measurements of rooms set forth on this floor plan are generally taken at the greatest points of each given room (as if the room were a perfect rectangle) without regard for any cutouts. Accordingly, the area of the actual room will typically be smaller than the product obtained by multiplying the stated length times width. All dimensions are approximate and may vary with actual construction, and all floor plans and development plans are subject to change. The size and configuration of balconies and terraces and windows varies throughout the building. For the actual size and configuration of the balcony and windows for your unit consult your Offering documents. All depictions of furnishings, appliances, built-ins, counters, and other matters of detail, including, without limitation, items of finish and decoration, are conceptual only and are not necessarily included in each Unit. The furniture layout and the use of space illustrated are suggested uses only and not intended to guaranty any specific use of space or accommodation of specific furnishings. The furnishings, design features, fixture and decor illustrated are conceptual only and may not be included with a unit purchase. Consult your prospectus and Purchase Agreement to learn what is included with a unit purchase and to review the unit square footage calculation method to be relied upon, which is set forth in the prospectus. This is not intended to be an offer to sell, or solicitation to buy, condominium units to residents of any jurisdiction where prohibited by law, and your eligibility for purchase will depend upon your state of residency. The offering is made only by the prospectus for the condominium and no statement should be relied upon if not made in the prospectus.

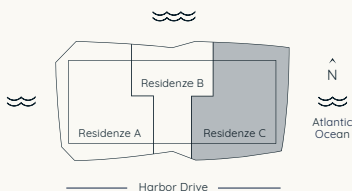
Riva

RESIDENZE
FORT LAUDERDALE



Residence C

LEVELS 6-16



3 BEDROOMS 3.5 BATHROOMS

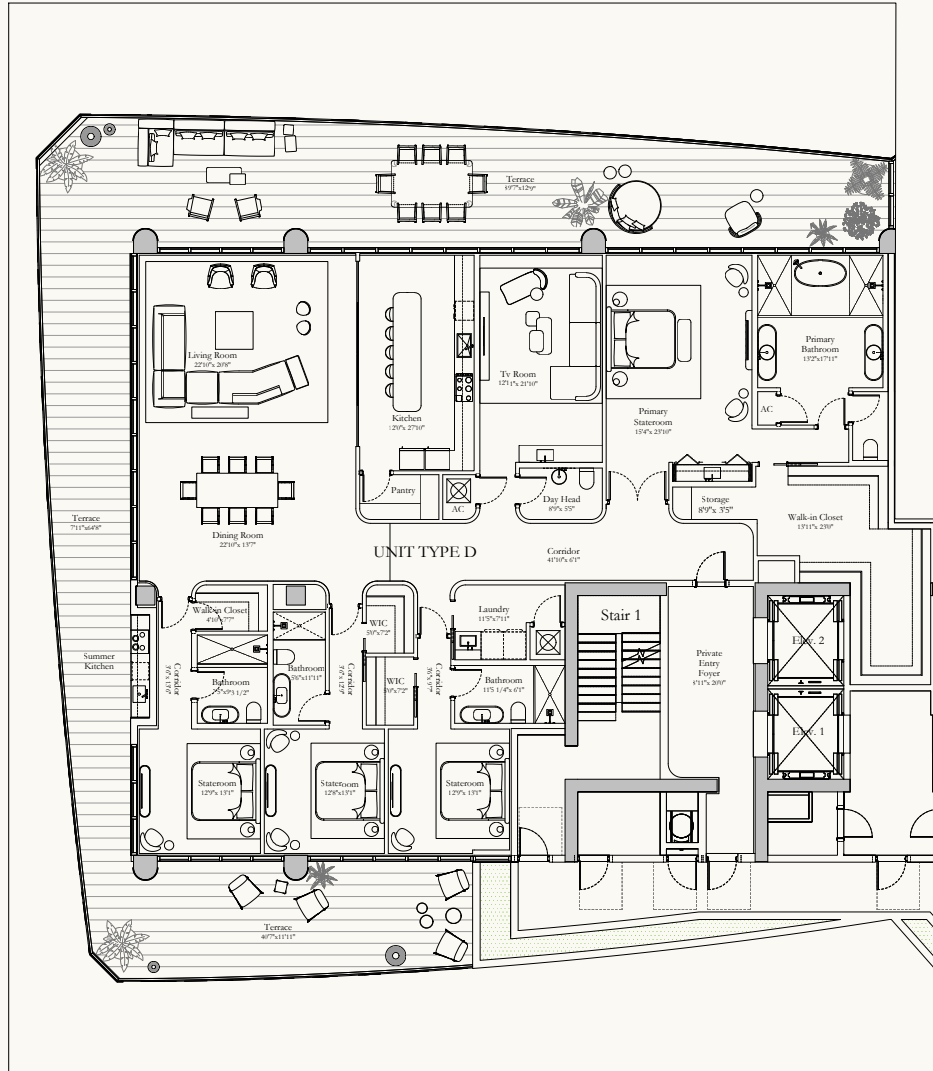
**INTERIOR TERRACES 3,397 SQ. FT.
1,622 SQ. FT.**

ORAL REPRESENTATIONS CANNOT BE RELIED UPON AS CORRECTLY STATING REPRESENTATIONS OF THE DEVELOPER. FOR CORRECT REPRESENTATIONS, MAKE REFERENCE TO THIS BROCHURE AND TO THE DOCUMENTS REQUIRED BY 718.503, FLORIDA STATUTES, TO BE FURNISHED BY A DEVELOPER TO A BUYER OR LESSEE. The home of the Condominium is Ocean Harbor Condominium. The Condominium is developed by Ocean Harbor Properties, LLC, a Florida limited liability company ("Developer"), which has the right to use the name Riva Residence under a license from Ferretti S.p.A. (the "Brand Owner"). The Brand Owner is not the Developer and there is no guarantee that the Condominium will always be known as Riva Residence and no party may rely on any such guarantee. This Condominium is being offered by Ocean Harbor Properties, LLC (the "Developer"). The square footage stated herein is approximate. Stated dimensions are measured to the exterior boundaries of the exterior walls and the centerline of interior demising walls and in fact vary from the dimensions that would be determined by using the description and definition of the "Unit" set forth in the Declaration (which generally only includes the interior airspace between the perimeter walls and excludes interior structural components). Note that measurements of rooms set forth on this floor plan are generally taken at the greatest points of each given room (as if the room were a perfect rectangle) without regard for any cutouts. Accordingly, the area of the actual room will typically be smaller than the product obtained by multiplying the stated length times width. All dimensions are approximate and may vary with actual construction, and all floor plans and development plans are subject to change. The size and configuration of balconies and terraces and windows varies throughout the building. For the actual size and configuration of the balcony and windows for your unit consult your Offering documents. All depictions of furnishings, appliances, built-ins, counters, and other matters of detail, including, without limitation, items of finish and decoration, are conceptual only and are not necessarily included in each Unit. The furniture layout and the use of space illustrated are suggested uses only and not intended to guaranty any specific use of space or accommodation of specific furnishings. The furnishings, design features, fixture and decor illustrated are conceptual only and may not be included with a unit purchase. Consult your prospectus and Purchase Agreement to learn what is included with a unit purchase and to review the unit square footage calculation method to be relied upon, which is set forth in the prospectus. This is not intended to be an offer to sell, or solicitation to buy, condominium units to residents of any jurisdiction where prohibited by law, and your eligibility for purchase will depend upon your state of residency. The offering is made only by the prospectus for the condominium and no statement should be relied upon if not made in the prospectus.

Riva

RESIDENZE

FORT LAUDERDALE

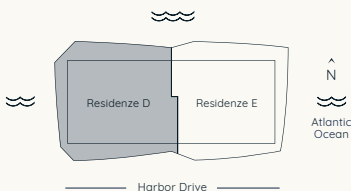


< W

E >

Residence D

LEVELS 17-18



4 BEDROOMS 4.5 BATHROOMS +DEN

**INTERIOR TERRACES 4,493 SQ. FT.
2,207 TO 2,213 SQ. FT.**

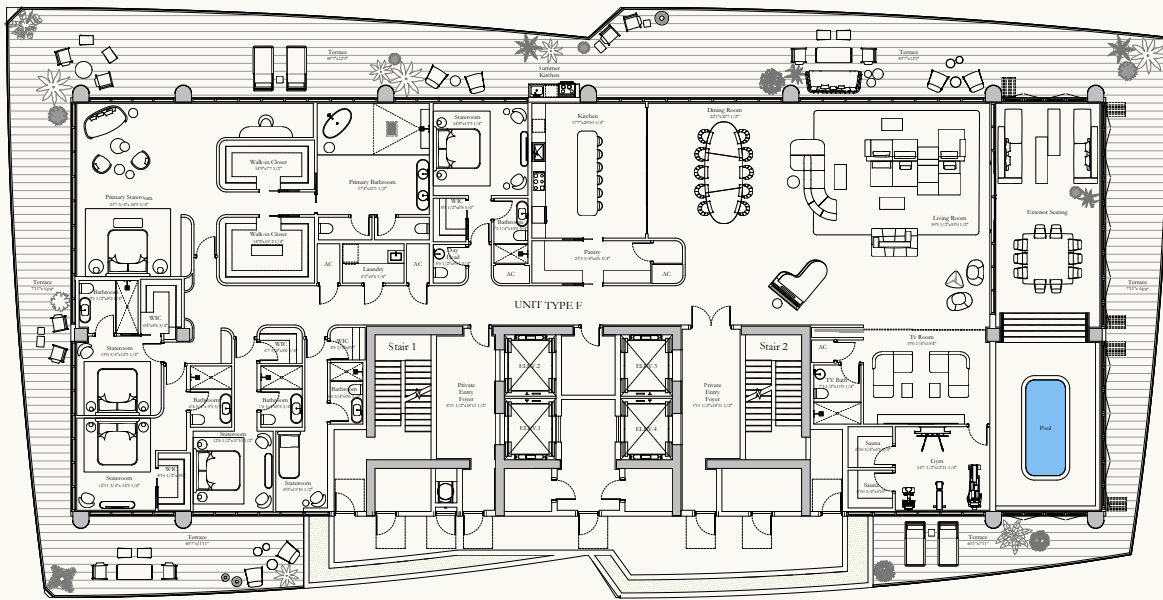
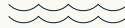
ORAL REPRESENTATIONS CANNOT BE RELIED UPON AS CORRECTLY STATING REPRESENTATIONS OF THE DEVELOPER. FOR CORRECT REPRESENTATIONS, MAKE REFERENCE TO THIS BROCHURE AND TO THE DOCUMENTS REQUIRED BY 718.503, FLORIDA STATUTES, TO BE FURNISHED BY A DEVELOPER TO A BUYER OR LESSEE. The home of the Condominium is Ocean Harbor Condominium. The Condominium is developed by Ocean Harbor Properties, LLC, a Florida limited liability company ("Developer"), which has the right to use the name Riva Residence under a license from Ferretti S.p.A. (the "Brand Owner"). The Brand Owner is not the Developer and there is no guarantee that the Condominium will always be known as Riva Residence and no party may rely on any such guarantee. This Condominium is being offered by Ocean Harbor Properties, LLC (the "Developer"). The square footage stated herein is approximate. Stated dimensions are measured to the exterior boundaries of the exterior walls and the centerline of interior demising walls and in fact vary from the dimensions that would be determined by using the description and definition of the "Unit" set forth in the Declaration (which generally only includes the interior airspace between the perimeter walls and excludes interior structural components). Note that measurements of rooms set forth on this floor plan are generally taken at the greatest points of each given room (as if the room were a perfect rectangle) without regard for any cutouts. Accordingly, the area of the actual room will typically be smaller than the product obtained by multiplying the stated length times width. All dimensions are approximate and may vary with actual construction, and all floor plans and development plans are subject to change. The size and configuration of balconies and terraces and windows varies throughout the building. For the actual size and configuration of the balcony and windows for your unit consult your Offering documents. All depictions of furnishings, appliances, built-ins, counters, and other matters of detail, including, without limitation, items of finish and decoration, are conceptual only and are not necessarily included in each Unit. The furniture layout and the use of space illustrated are suggested uses only and not intended to guaranty any specific use of space or accommodation of specific furnishings. The furnishings, design features, fixture and decor illustrated are conceptual only and may not be included with a unit purchase. Consult your prospectus and Purchase Agreement to learn what is included with a unit purchase and to review the unit square footage calculation method to be relied upon, which is set forth in the prospectus. This is not intended to be an offer to sell, or solicitation to buy, condominium units to residents of any jurisdiction where prohibited by law, and your eligibility for purchase will depend upon your state of residency. The offering is made only by the prospectus for the condominium and no statement should be relied upon if not made in the prospectus.



*** ORAL REPRESENTATIONS CANNOT BE RELIED UPON AS CORRECTLY STATING REPRESENTATIONS OF THE DEVELOPER. FOR CORRECT REPRESENTATIONS, MAKE REFERENCE TO THIS BROCHURE AND TO THE DOCUMENTS REQUIRED BY 78B-503, FLORIDA STATUTES, TO BE FURNISHED BY A DEVELOPER TO A BUYER OF THE HOME.** The name of the Condominium is Ocean Ridge Condominium. The Developer is Ocean Harbor Properties, LLC, a Florida limited liability company ("Developer"), which has the right to sell the home Riva Residence under a license from Ferrarini & Associates, Inc. ("Brand Owner"). The Brand Owner is not the Developer and there is no guarantee that the Condominium will always be known as Riva Residence and no party may rely on any such guarantee. This Condominium is being offered by Ocean Harbor Properties, LLC (the "Developer"). The square footage stated herein is approximate. Stated dimensions are measured to the exterior boundaries of the exterior walls and the centerline of interior demising walls and in fact vary from the dimensions that would be determined by using the description and definition of the "Unit" set forth in the Declaration (which generally only includes the interior airspace between the perimeter walls and excludes interior partitions). The actual measurements of items set forth in the description and definition of the "Unit" may differ from the stated dimensions due to construction tolerances and/or measurement methods used by the Developer. The actual area of each given room (as it is being sold) may also differ from the stated area due to construction tolerances and/or measurement methods used by the Developer. The actual length and width of all dimensions are approximate and may vary with actual construction, and all floor plans and drawings are preliminary and subject to change. The location, number and configuration of balconies and terraces and windows shown on the floor plan are approximate and may vary with actual construction. The actual size and configuration of the balconies and windows for your unit consult your Offering documents. All depictions of furnishings, appliances, built-ins, counters, and other matters of detail, including, without limitation, items of finish and decoration, are conceptual only and are not necessarily included in each Unit. The furniture layout and the use of space illustrated are suggested uses only and not intended to guaranty any specific use of space or accommodation of specific furnishings. The furnishings, design features, fixture and decor illustrations are conceptual only and may not be included with a unit purchase. Consult your prospectus and Purchase Agreement to learn what is included with a unit purchase. The restrictions on resale of units in this offering are made available to you on offer to sell, solicitation to buy, condominium units to residents of any jurisdiction where prohibited by law, and your eligibility for purchase will depend upon your state of residency. This offering is made only by the prospectus for the condominium and no statement should be relied upon if not made in the prospectus.

Riva

RESIDENZE
FORT LAUDERDALE



Residence F

LOWER PENTHOUSE | LEVEL 19



6 BEDROOMS 7.5 BATHROOMS

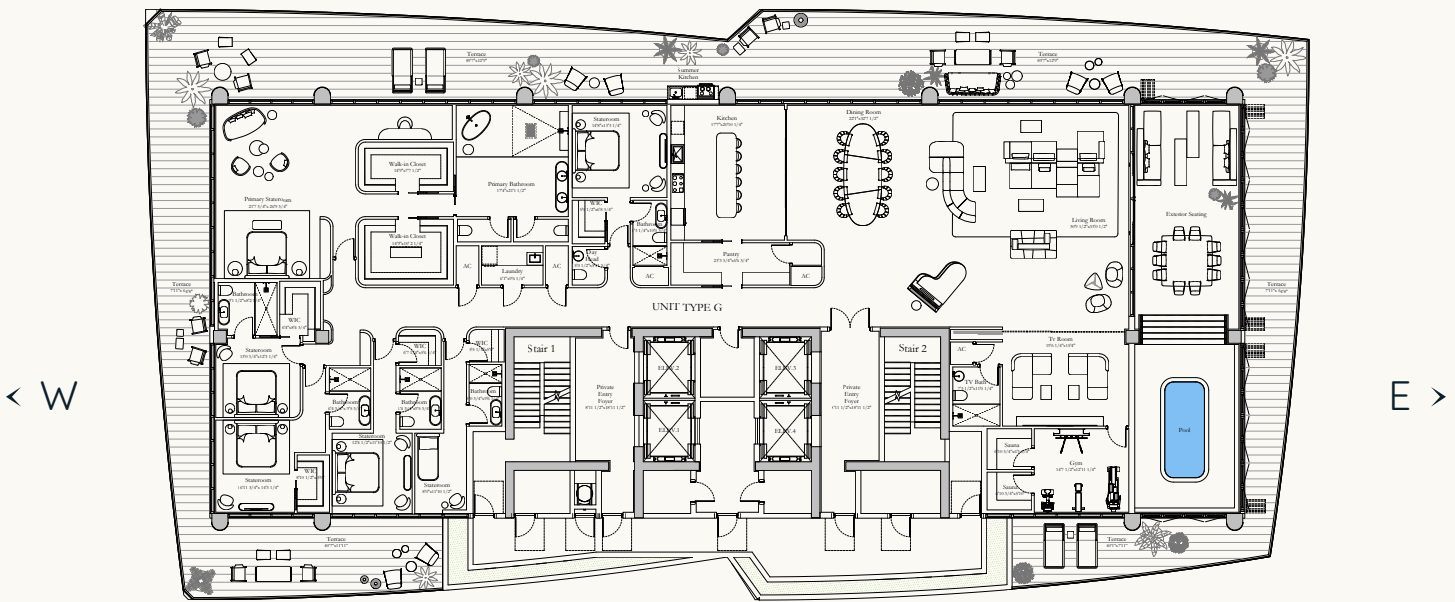
INTERIOR 8,878 SQ. FT.
TERRACE 4,239 SQ. FT.

ORAL REPRESENTATIONS CANNOT BE RELIED UPON AS CORRECTLY STATING REPRESENTATIONS OF THE DEVELOPER. FOR CORRECT REPRESENTATIONS, MAKE REFERENCE TO THIS BROCHURE AND TO THE DOCUMENTS REQUIRED BY 718.503, FLORIDA STATUTES, TO BE FURNISHED BY A DEVELOPER TO A BUYER OR LESSEE. The name of the Condominium is Ocean Harbor Condominium. The Condominium is developed by Ocean Harbor Properties, LLC, a Florida limited liability company ("Developer"), which has the right to use the name Riva Residence under a license from Ferretti S.p.A. (the "Brand Owner"). The Brand Owner is not the Developer and there is no guarantee that the Condominium will always be known as Riva Residence and no party may rely on any such guarantee. This Condominium is being offered by Ocean Harbor Properties, LLC (the "Developer"). The square footage stated herein is approximate. Stated dimensions are measured to the exterior boundaries of the exterior walls and the centerline of interior demising walls and in fact vary from the dimensions that would be determined by using the description and definition of the "Unit" set forth in the Declaration (which generally only includes the interior airspace between the perimeter walls and excludes interior structural components). Note that measurements of rooms set forth on this floor plan are generally taken at the greatest points of each given room (as if the room were a perfect rectangle) without regard for any cutouts. Accordingly, the area of the actual room will typically be smaller than the product obtained by multiplying the stated length times width. All dimensions are approximate and may vary with actual construction, and all floor plans and development plans are subject to change. The size and configuration of balconies and terraces and windows varies throughout the building. For the actual size and configuration of the balcony and windows for your unit consult your Offering documents. All depictions of furnishings, appliances, built-ins, counters, and other matters of detail, including, without limitation, items of finish and decoration, are conceptual only and are not necessarily included in each Unit. The furniture layout and the use of space illustrated are suggested uses only and not intended to guaranty any specific use of space or accommodation of specific furnishings. The furnishings, design features, fixture and decor illustrated are conceptual only and may not be included with a unit purchase. Consult your prospectus and Purchase Agreement to learn what is included with a unit purchase and to review the unit square footage calculation method to be relied upon, which is set forth in the prospectus. This is not intended to be an offer to sell, or solicitation to buy, condominium units to residents of any jurisdiction where prohibited by law, and your eligibility for purchase will depend upon your state of residency. The offering is made only by the prospectus for the condominium and no statement should be relied upon if not made in the prospectus.

Riva

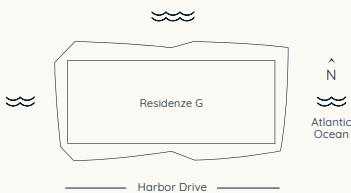
RESIDENZE

FORT LAUDERDALE



Residence G

UPPER PENTHOUSE | LEVEL 20



6 BEDROOMS 7.5 BATHROOMS

INTERIOR 8,878 SQ. FT.
TERRACE 4,239 SQ. FT.

ORAL REPRESENTATIONS CANNOT BE RELIED UPON AS CORRECTLY STATING REPRESENTATIONS OF THE DEVELOPER. FOR CORRECT REPRESENTATIONS, MAKE REFERENCE TO THIS BROCHURE AND TO THE DOCUMENTS REQUIRED BY 718.503, FLORIDA STATUTES, TO BE FURNISHED BY A DEVELOPER TO A BUYER OR LESSEE. The home of the Condominium is Ocean Harbor Condominium. The Condominium is developed by Ocean Harbor Properties, LLC, a Florida limited liability company ("Developer"), which has the right to use the name Riva Residence under a license from Ferretti S.p.A. (the "Brand Owner"). The Brand Owner is not the Developer and there is no guarantee that the Condominium will always be known as Riva Residence and no party may rely on any such guarantee. This Condominium is being offered by Ocean Harbor Properties, LLC (the "Developer"). The square footage stated herein is approximate. Stated dimensions are measured to the exterior boundaries of the exterior walls and the centerline of interior demising walls and in fact vary from the dimensions that would be determined by using the description and definition of the "Unit" set forth in the Declaration (which generally only includes the interior airspace between the perimeter walls and excludes interior structural components). Note that measurements of rooms set forth on this floor plan are generally taken at the greatest points of each given room (as if the room were a perfect rectangle) without regard for any cutouts. Accordingly, the area of the actual room will typically be smaller than the product obtained by multiplying the stated length times width. All dimensions are approximate and may vary with actual construction, and all floor plans and development plans are subject to change. The size and configuration of balconies and terraces and windows varies throughout the building. For the actual size and configuration of the balcony and windows for your unit consult your Offering documents. All depictions of furnishings, appliances, built-ins, counters, and other matters of detail, including, without limitation, items of finish and decoration, are conceptual only and are not necessarily included in each Unit. The furniture layout and the use of space illustrated are suggested uses only and not intended to guaranty any specific use of space or accommodation of specific furnishings. The furnishings, design features, fixture and decor illustrated are conceptual only and may not be included with a unit purchase. Consult your prospectus and Purchase Agreement to learn what is included with a unit purchase and to review the unit square footage calculation method to be relied upon, which is set forth in the prospectus. This is not intended to be an offer to sell, or solicitation to buy, condominium units to residents of any jurisdiction where prohibited by law, and your eligibility for purchase will depend upon your state of residency. The offering is made only by the prospectus for the condominium and no statement should be relied upon if not made in the prospectus.