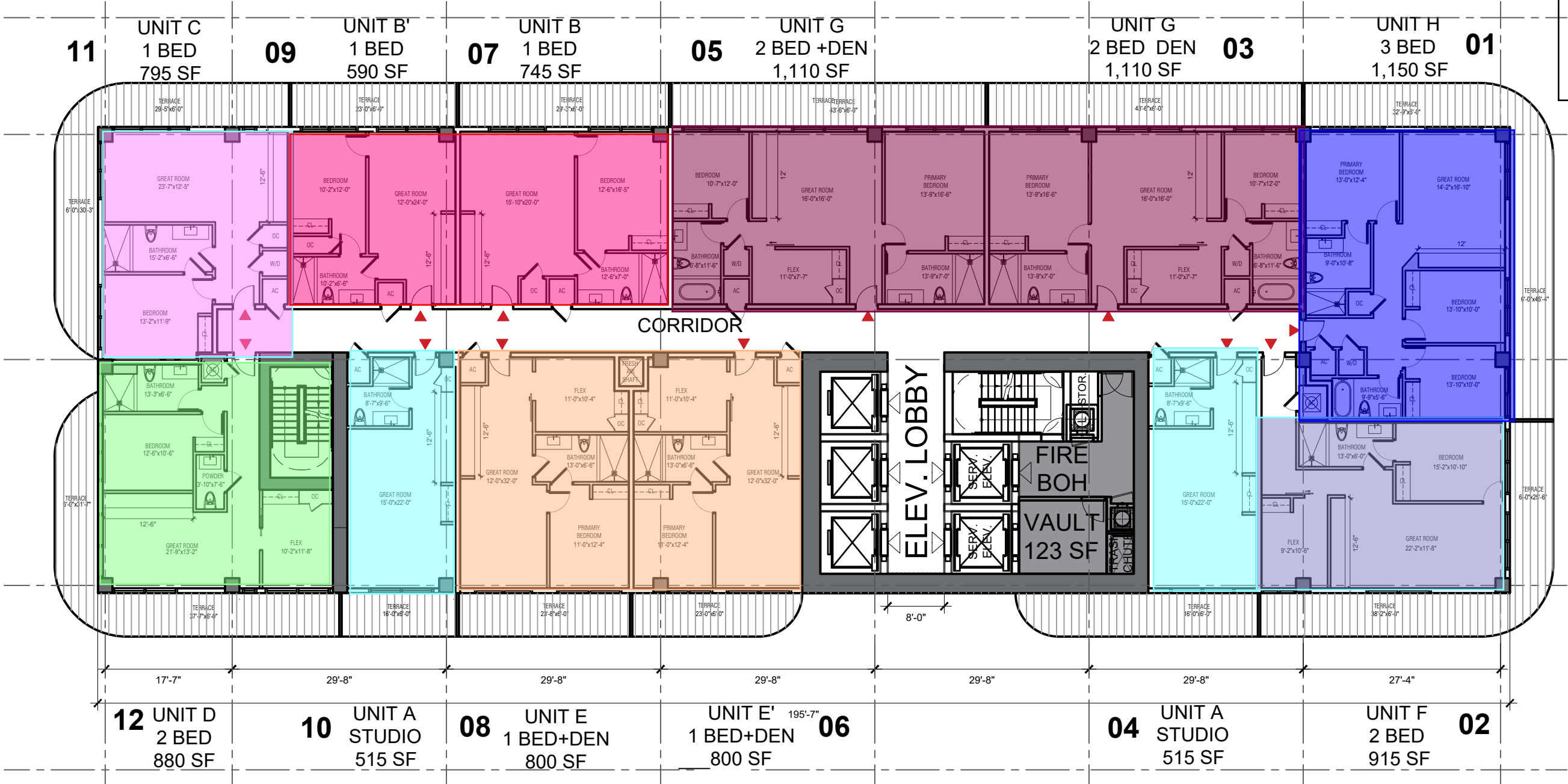


EAST

41 STORY BLDG
384 UNITS
12 UNITS PER FLOOR
8 UNIT TYPES
STUDIO - 3 BR

NORTH

SOUTH



WEST

ARQUITECTONICA

2900 Oak Avenue, Miami, FL 33133
T 305.372.1812 F 305.372.1175

ALL DESIGNS INDICATED IN THESE DRAWINGS ARE PROPERTY OF ARQUITECTONICA INTERNATIONAL CORP. NO COPIES, TRANSMISSIONS, REPRODUCTIONS OR ELECTRONIC MANIPULATION OF ANY PORTION OF THESE DRAWINGS IN THE WHOLE OR IN PART ARE TO BE MADE WITHOUT THE EXPRESS WRITTEN AUTHORIZATION OF ARQUITECTONICA INTERNATIONAL CORP. DESIGN INTENT SHOWN IS SUBJECT TO REVIEW AND APPROVAL OF ALL APPLICABLE LOCAL AND GOVERNMENTAL AUTHORITIES HAVING JURISDICTION. ALL COPYRIGHTS RESERVED © 2021.
THE DATA INCLUDED IN THIS STUDY IS CONCEPTUAL IN NATURE AND WILL CONTINUE TO BE MODIFIED THROUGHOUT THE COURSE OF THE PROJECTS DEVELOPMENT WITH THE EVENTUAL INTEGRATION OF STRUCTURAL, MEP AND LIFE SAFETY SYSTEMS. AS THESE ARE FURTHER REFINED, THE NUMBERS WILL BE ADJUSTED ACCORDINGLY.

200 W. BROWARD BLVD
FORT LAUDERDALE, FLORIDA

ENLARGED FLOOR PLANS



SCALE: 1" = 16'



DATE:
01/08/2024

A-401

UNIT A - Lines 04 & 10

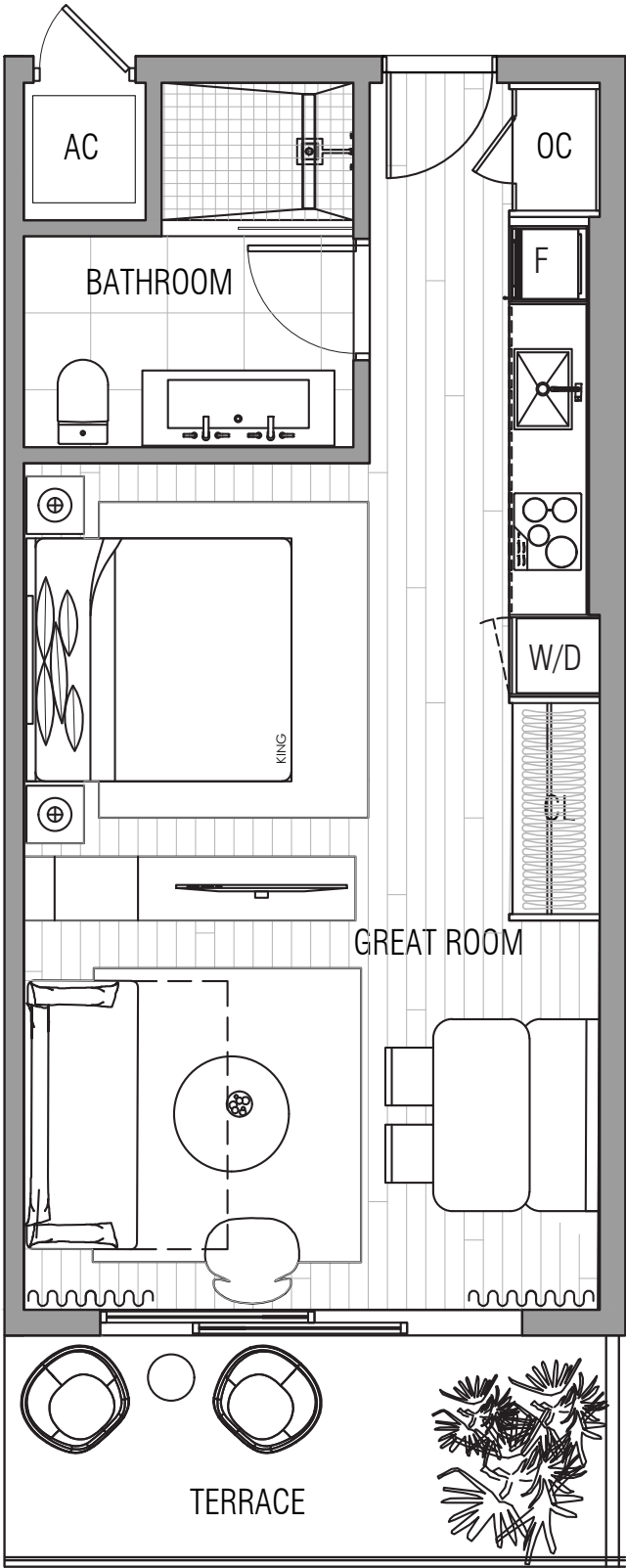
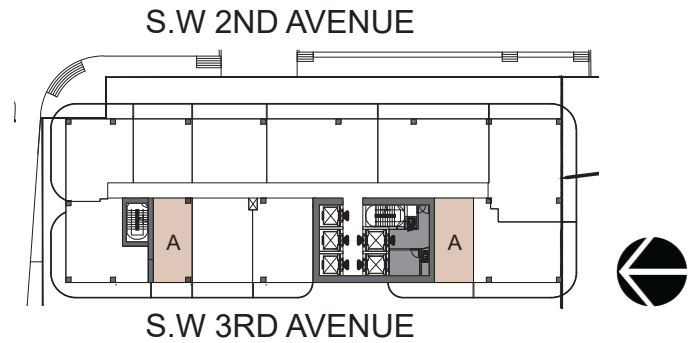
STUDIO
1 BATHROOM

INTERIOR
515 SQ. FT.

EXTERIOR
90 SQ. FT.

TOTAL
605 SQ. FT.

WEST BROWARD



Disclaimers:

(a)The sketches, renderings, graphic materials, plans, specifications, terms, conditions and statements contained herein are proposed only, and the Developer reserves the right to modify, revise or withdraw any or all of same in its sole discretion and without prior notice. All improvements, designs and construction are subject to first obtaining the appropriate federal, state and local permits and approvals for same.

(b)Any drawings and depictions are conceptual only and are for the convenience of reference. They should not be relied upon as representations, express or implied, of the final detail of the residences. The Developer expressly reserves the right to make modifications, revisions, and changes it deems desirable in its sole and absolute discretion. All depictions of appliances, counters, soffits, floor coverings and other matters of detail are conceptual only and are not necessarily included in each Unit. Consult your Agreement and the Offering Documents for the items included with the Unit. Dimensions and square footage are approximate and may vary with actual construction.

(c)All fixtures and items of finish and decoration are for display only and are not to be included with the unit. Consult the Offering Documents and the Agreement for a description of those features which are to be included in the units.

(d)The features, plans and specifications described above are proposed only, and the Developer reserves the right to modify, revise or withdraw any or all of same in its sole discretion and without prior notice. Without limiting the generality of the foregoing, Developer reserves the right to substitute any of the foregoing with items of similar or better value, in Developer's opinion.

UNIT B.1 - Line 07

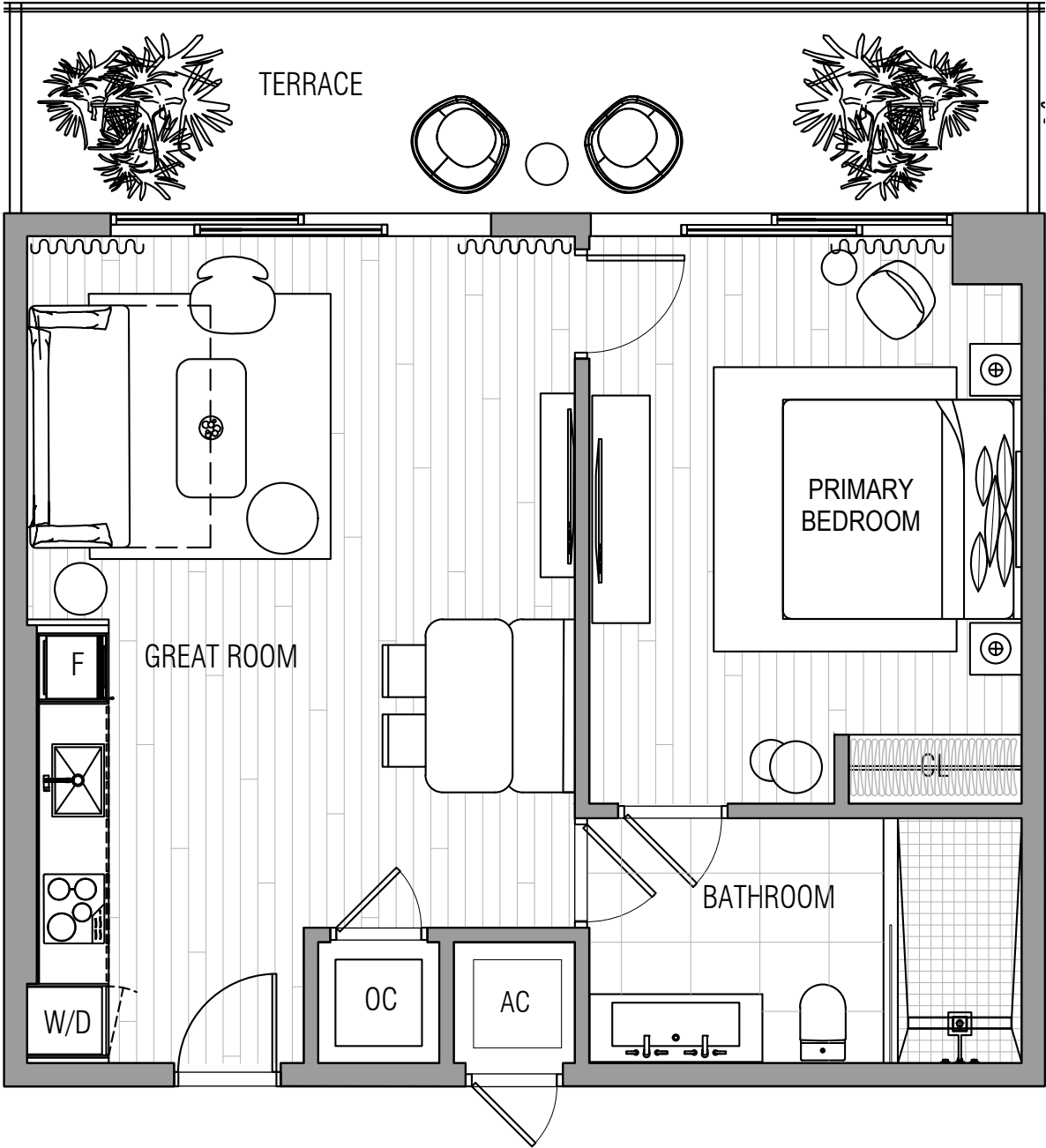
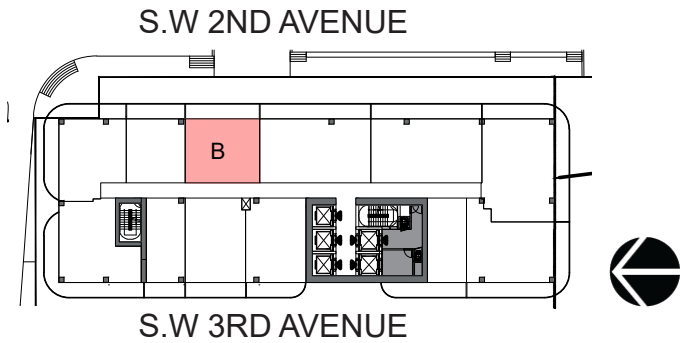
1 BEDROOM
1 BATHROOM

INTERIOR
745 SQ. FT.

EXTERIOR
175 SQ. FT.

TOTAL
920 SQ. FT.

WEST BROWARD



Disclaimers:

(a) The sketches, renderings, graphic materials, plans, specifications, terms, conditions and statements contained herein are proposed only, and the Developer reserves the right to modify, revise or withdraw any or all of same in its sole discretion and without prior notice. All improvements, designs and construction are subject to first obtaining the appropriate federal, state and local permits and approvals for same.

(b) Any drawings and depictions are conceptual only and are for the convenience of reference. They should not be relied upon as representations, express or implied, of the final detail of the residences. The Developer expressly reserves the right to make modifications, revisions, and changes it deems desirable in its sole and absolute discretion. All depictions of appliances, counters, soffits, floor coverings and other matters of detail are conceptual only and are not necessarily included in each Unit. Consult your Agreement and the Offering Documents for the items included with the Unit. Dimensions and square footage are approximate and may vary with actual construction.

(c) All fixtures and items of finish and decoration are for display only and are not to be included in the unit. Consult the Offering Documents and the Agreement for a description of those features which are to be included in the units.

(d) The features, plans and specifications described above are proposed only, and the Developer reserves the right to modify, revise or withdraw any or all of same in its sole discretion and without prior notice. Without limiting the generality of the foregoing, Developer reserves the right to substitute any of the foregoing with items of similar or better value, in Developer's opinion.

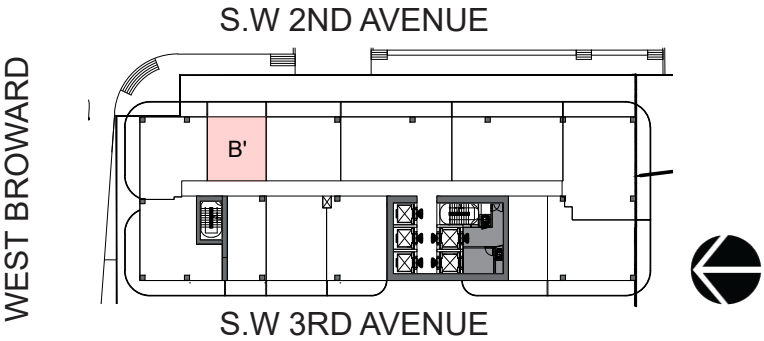
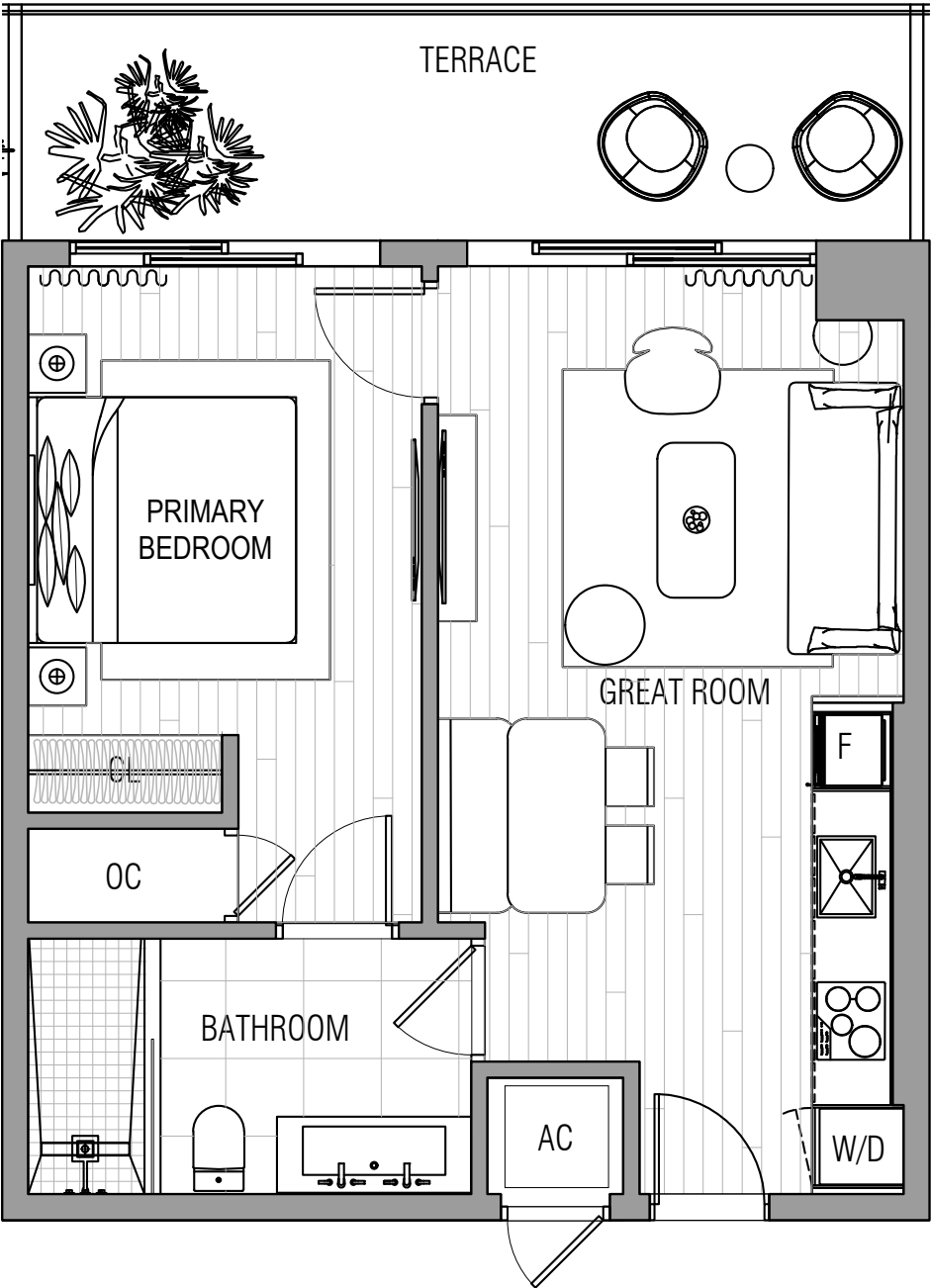
UNIT B.2 - Line 09

1 BEDROOM
1 BATHROOM

INTERIOR
590 SQ. FT.

EXTERIOR
140 SQ. FT.

TOTAL
730 SQ. FT.



Disclaimers:
(a)The sketches, renderings, graphic materials, plans, specifications, terms, conditions and statements contained herein are proposed only, and the Developer reserves the right to modify, revise or withdraw any or all of same in its sole discretion and without prior notice. All improvements, designs and construction are subject to first obtaining the appropriate federal, state and local permits and approvals for same.
(b)Any drawings and depictions are conceptual only and are for the convenience of reference. They should not be relied upon as representations, express or implied, of the final detail of the residences. The Developer expressly reserves the right to make modifications, revisions, and changes it deems desirable in its sole and absolute discretion. All depictions of appliances, counters, soffits, floor coverings and other matters of detail are conceptual only and are not necessarily included in each Unit. Consult your Agreement and the Offering Documents for the items included with the Unit. Dimensions and square footage are approximate and may vary with actual construction.
(c)All fixtures and items of finish and decoration are for display only and are not to be included with the unit. Consult the Offering Documents and the Agreement for a description of those features which are to be included in the units.
(d)The features, plans and specifications described above are proposed only, and the Developer reserves the right to modify, revise or withdraw any or all of same in its sole discretion and without prior notice. Without limiting the generality of the foregoing, Developer reserves the right to substitute any of the foregoing with items of similar or better value, in Developer's opinion.

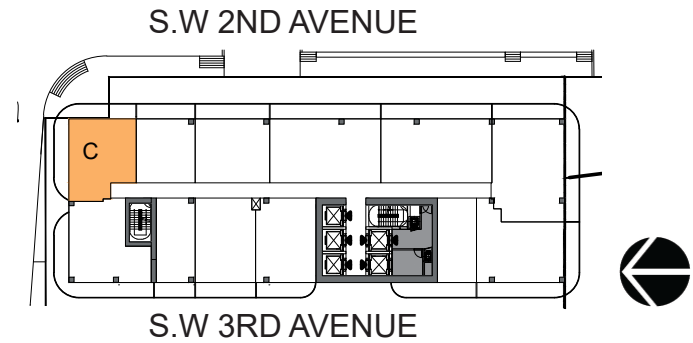
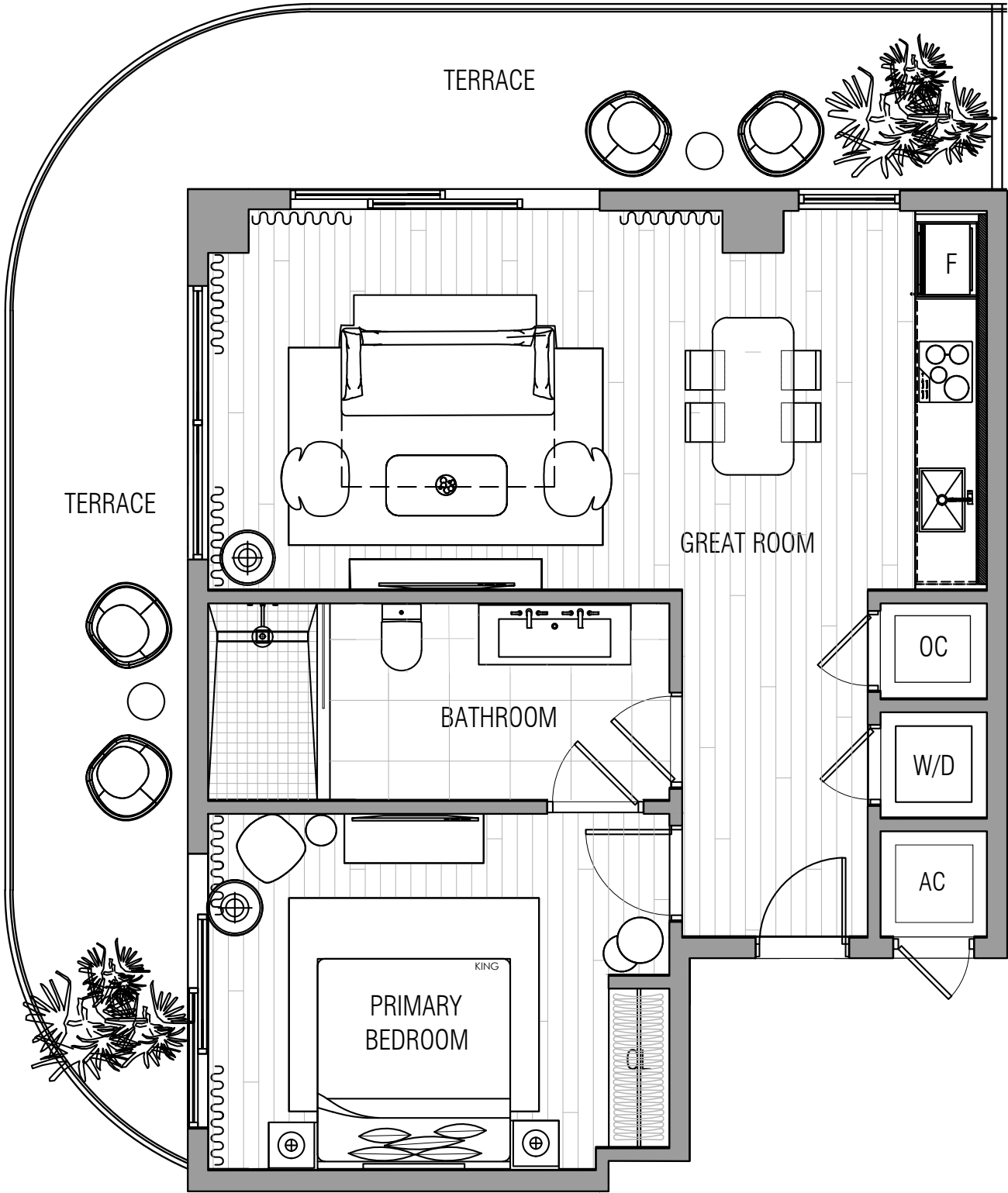
UNIT C - Line 11

1 BEDROOM
1 BATHROOM

INTERIOR
795 SQ. FT.

EXTERIOR
355 SQ. FT.

TOTAL
1,150 SQ. FT.



Disclaimers:
(a) The sketches, renderings, graphic materials, plans, specifications, terms, conditions and statements contained herein are proposed only, and the Developer reserves the right to modify, revise or withdraw any or all of same in its sole discretion and without prior notice. All improvements, designs and construction are subject to first obtaining the appropriate federal, state and local permits and approvals for same.
(b) Any drawings and depictions are conceptual only and are for the convenience of reference. They should not be relied upon as representations, express or implied, of the final detail of the residences. The Developer expressly reserves the right to make modifications, revisions, and changes it deems desirable in its sole and absolute discretion. All depictions of appliances, counters, soffits, floor coverings and other matters of detail are conceptual only and are not necessarily included in each Unit. Consult your Agreement and the Offering Documents for the items included with the Unit. Dimensions and square footage are approximate and may vary with actual construction.
(c) All fixtures and items of finish and decoration are for display only and are not to be included with the unit. Consult the Offering Documents and the Agreement for a description of those features which are to be included in the units.
(d) The features, plans and specifications described above are proposed only, and the Developer reserves the right to modify, revise or withdraw any or all of same in its sole discretion and without prior notice. Without limiting the generality of the foregoing, Developer reserves the right to substitute any of the foregoing with items of similar or better value, in Developer's opinion.

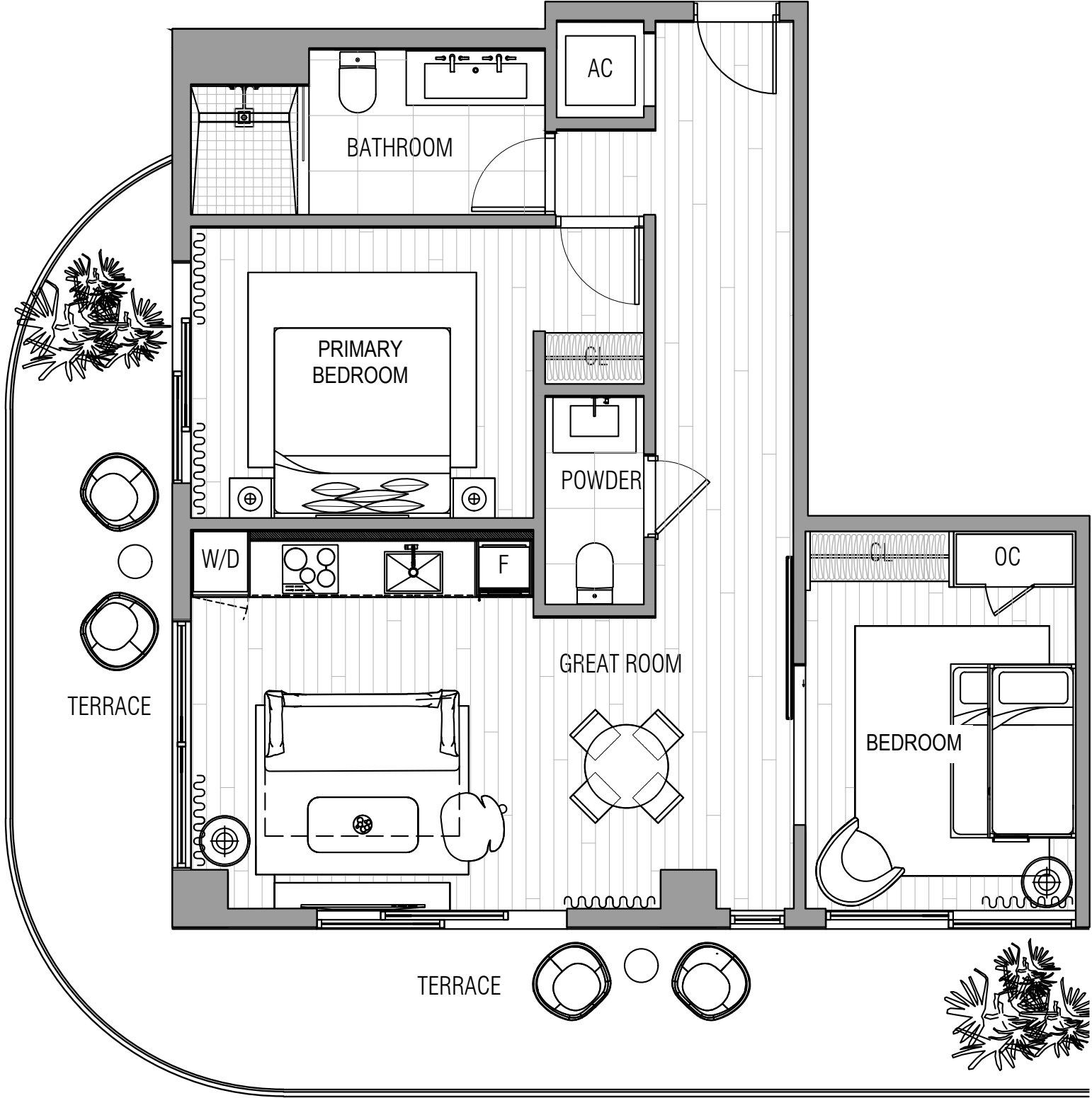
UNIT D - Line 12

2 BEDROOMS
1.5 BATHROOMS

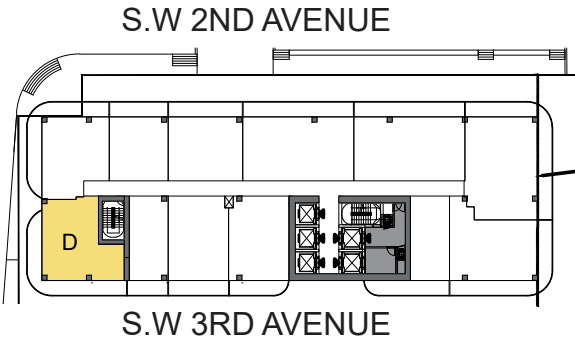
INTERIOR
880 SQ. FT.

EXTERIOR
365 SQ. FT.

TOTAL
1,245 SQ. FT.



WEST BROWARD



Disclaimers:
(a) The sketches, renderings, graphic materials, plans, specifications, terms, conditions and statements contained herein are proposed only, and the Developer reserves the right to modify, revise or withdraw any or all of same in its sole discretion and without prior notice. All improvements, designs and construction are subject to first obtaining the appropriate federal, state and local permits and approvals for same.
(b) Any drawings and depictions are conceptual only and are for the convenience of reference. They should not be relied upon as representations, express or implied, of the final detail of the residences. The Developer expressly reserves the right to make modifications, revisions, and changes it deems desirable in its sole and absolute discretion. All depictions of appliances, counters, soffits, floor coverings and other matters of detail are conceptual only and are not necessarily included in each Unit. Consult your Agreement and the Offering Documents for the items included with the Unit. Dimensions and square footage are approximate and may vary with actual construction.
(c) All fixtures and items of finish and decoration are for display only and are not to be included with the unit. Consult the Offering Documents and the Agreement for a description of those features which are to be included in the units.
(d) The features, plans and specifications described above are proposed only, and the Developer reserves the right to modify, revise or withdraw any or all of same in its sole discretion and without prior notice. Without limiting the generality of the foregoing, Developer reserves the right to substitute any of the foregoing with items of similar or better value, in Developer's opinion.

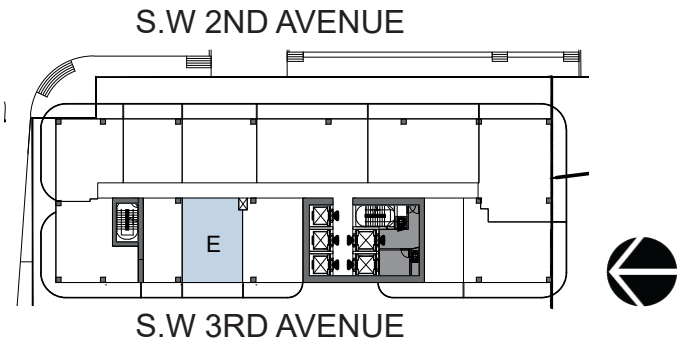
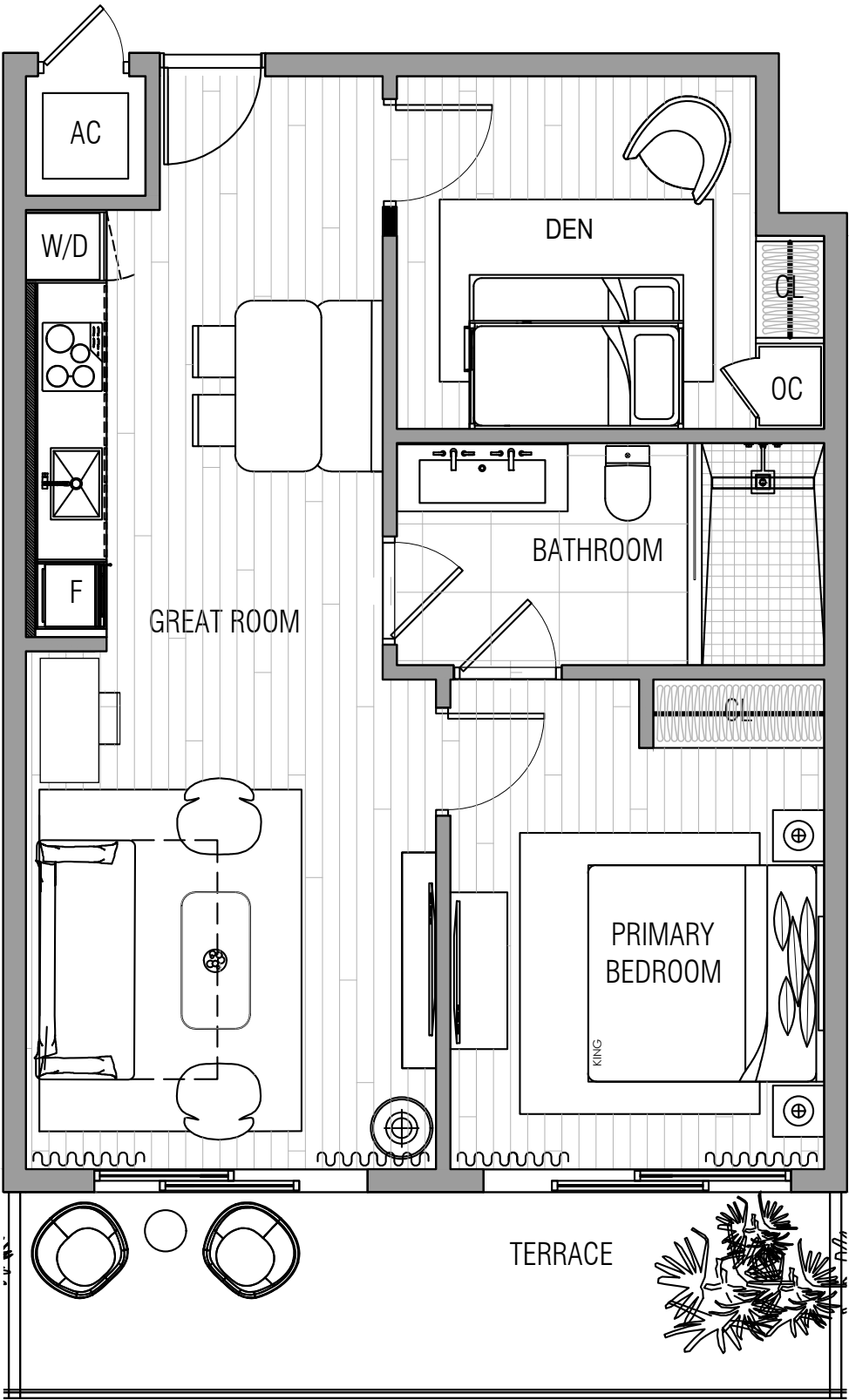
UNIT E.1 - Line 08

1 BEDROOM + DEN
1 BATHROOM

INTERIOR
800 SQ. FT.

EXTERIOR
140 SQ. FT.

TOTAL
940 SQ. FT.



Disclaimers:
(a)The sketches, renderings, graphic materials, plans, specifications, terms, conditions and statements contained herein are proposed only, and the Developer reserves the right to modify, revise or withdraw any or all of same in its sole discretion and without prior notice. All improvements, designs and construction are subject to first obtaining the appropriate federal, state and local permits and approvals for same.
(b)Any drawings and depictions are conceptual only and are for the convenience of reference. They should not be relied upon as representations, express or implied, of the final detail of the residences. The Developer expressly reserves the right to make modifications, revisions, and changes it deems desirable in its sole and absolute discretion. All depictions of appliances, counters, soffits, floor coverings and other matters of detail are conceptual only and are not necessarily included in each Unit. Consult your Agreement and the Offering Documents for the items included with the Unit. Dimensions and square footage are approximate and may vary with actual construction.
(c)All fixtures and items of finish and decoration are for display only and are not to be included with the unit. Consult the Offering Documents and the Agreement for a description of those features which are to be included in the units.
(d)The features, plans and specifications described above are proposed only, and the Developer reserves the right to modify, revise or withdraw any or all of same in its sole discretion and without prior notice. Without limiting the generality of the foregoing, Developer reserves the right to substitute any of the foregoing with items of similar or better value, in Developer's opinion.

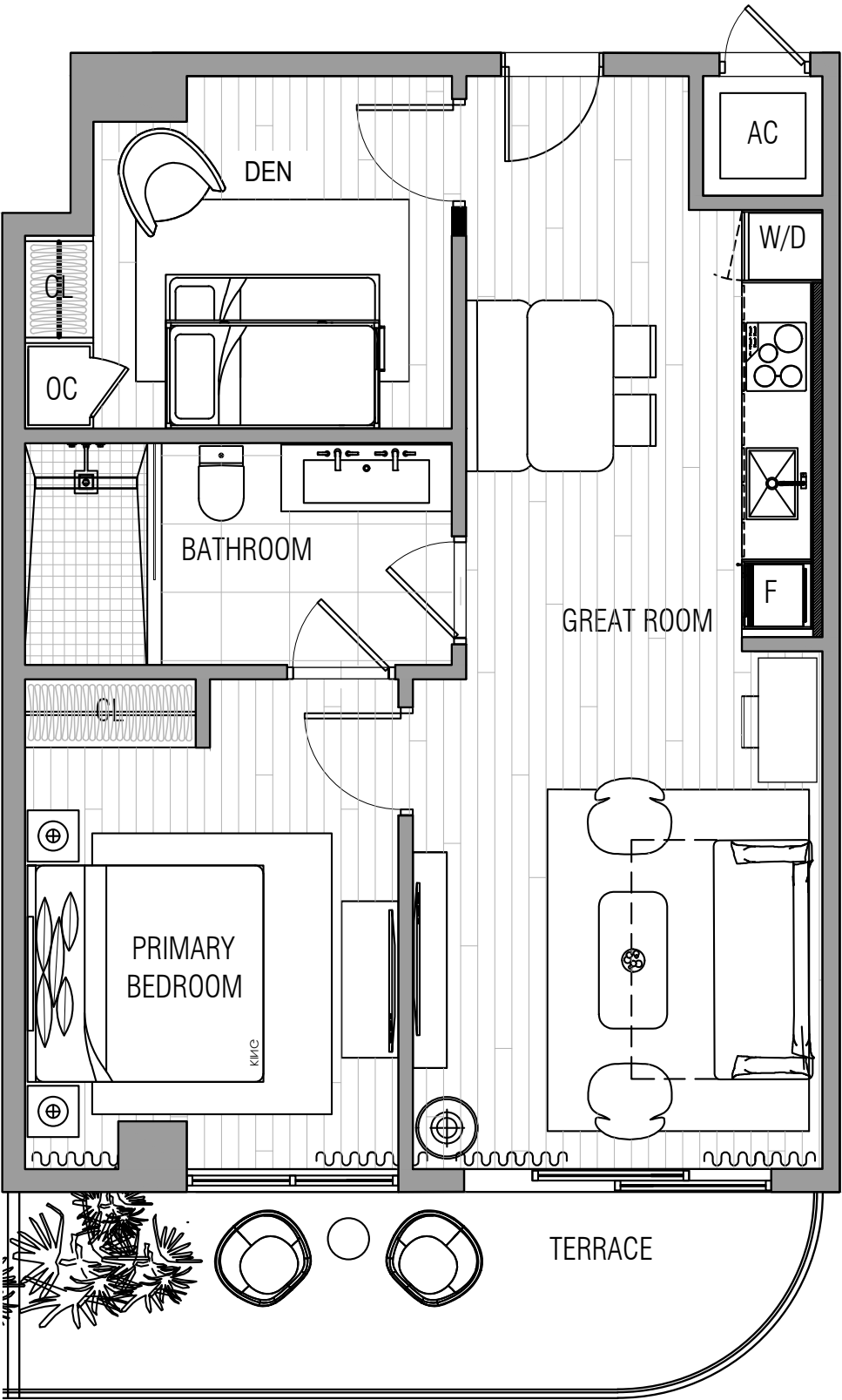
UNIT E.2 - Line 06

1 BEDROOM + DEN
1 BATHROOM

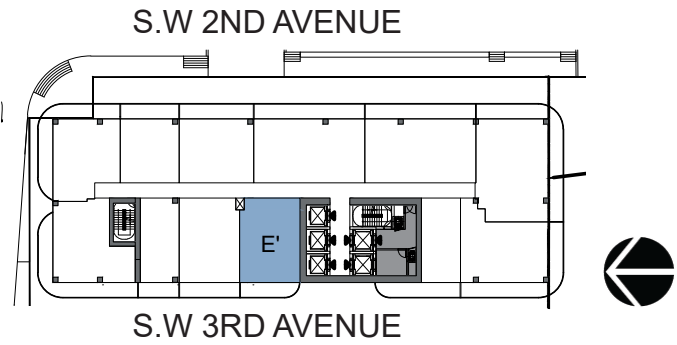
INTERIOR
800 SQ. FT.

EXTERIOR
135 SQ. FT.

TOTAL
935 SQ. FT.



WEST BROWARD



Disclaimers:
(a)The sketches, renderings, graphic materials, plans, specifications, terms, conditions and statements contained herein are proposed only, and the Developer reserves the right to modify, revise or withdraw any or all of same in its sole discretion and without prior notice. All improvements, designs and construction are subject to first obtaining the appropriate federal, state and local permits and approvals for same.
(b)Any drawings and depictions are conceptual only and are for the convenience of reference. They should not be relied upon as representations, express or implied, of the final detail of the residences. The Developer expressly reserves the right to make modifications, revisions, and changes it deems desirable in its sole and absolute discretion. All depictions of appliances, counters, soffits, floor coverings and other matters of detail are conceptual only and are not necessarily included in each Unit. Consult your Agreement and the Offering Documents for the items included with the Unit. Dimensions and square footage are approximate and may vary with actual construction.
(c)All fixtures and items of finish and decoration are for display only and are not to be included with the unit. Consult the Offering Documents and the Agreement for a description of those features which are to be included in the units.
(d)The features, plans and specifications described above are proposed only, and the Developer reserves the right to modify, revise or withdraw any or all of same in its sole discretion and without prior notice. Without limiting the generality of the foregoing, Developer reserves the right to substitute any of the foregoing with items of similar or better value, in Developer's opinion.

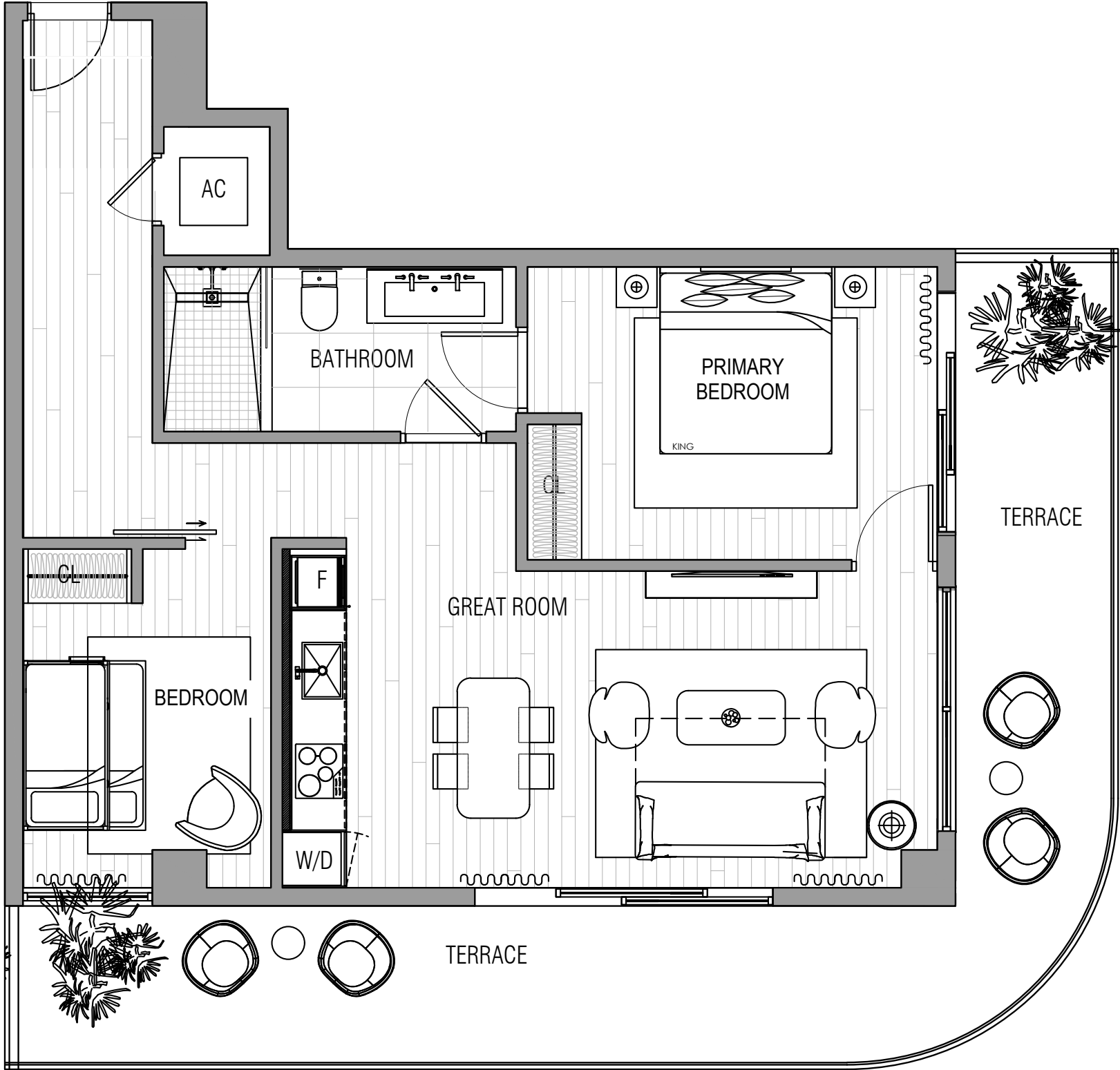
UNIT F - LINE 02

2 BEDROOMS
1 BATHROOM

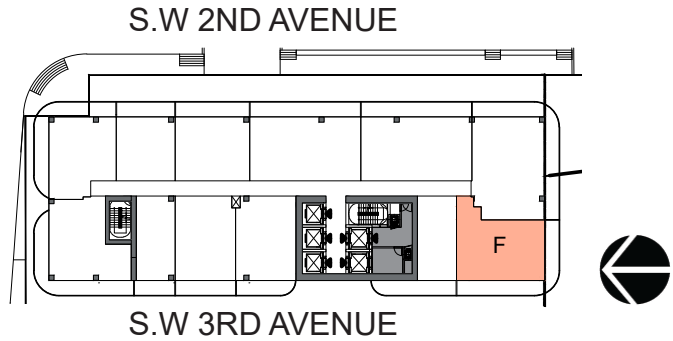
INTERIOR
915 SQ. FT.

EXTERIOR
365 SQ. FT.

TOTAL
1280 SQ. FT.



WEST BROWARD



Disclaimers:
(a)The sketches, renderings, graphic materials, plans, specifications, terms, conditions and statements contained herein are proposed only, and the Developer reserves the right to modify, revise or withdraw any or all of same in its sole discretion and without prior notice. All improvements, designs and construction are subject to first obtaining the appropriate federal, state and local permits and approvals for same.
(b)Any drawings and depictions are conceptual only and are for the convenience of reference. They should not be relied upon as representations, express or implied, of the final detail of the residences. The Developer expressly reserves the right to make modifications, revisions, and changes it deems desirable in its sole and absolute discretion. All depictions of appliances, counters, soffits, floor coverings and other matters of detail are conceptual only and are not necessarily included in each Unit. Consult your Agreement and the Offering Documents for the items included with the Unit. Dimensions and square footage are approximate and may vary with actual construction.
(c)All fixtures and items of finish and decoration are for display only and are not to be included with the unit. Consult the Offering Documents and the Agreement for a description of those features which are to be included in the units.
(d)The features, plans and specifications described above are proposed only, and the Developer reserves the right to modify, revise or withdraw any or all of same in its sole discretion and without prior notice. Without limiting the generality of the foregoing, Developer reserves the right to substitute any of the foregoing with items of similar or better value, in Developer's opinion.

UNIT G

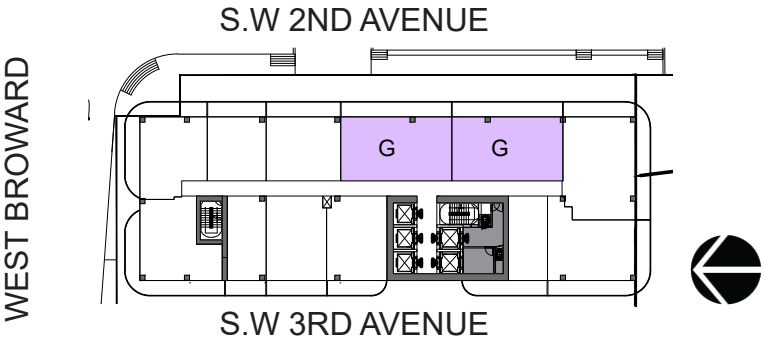
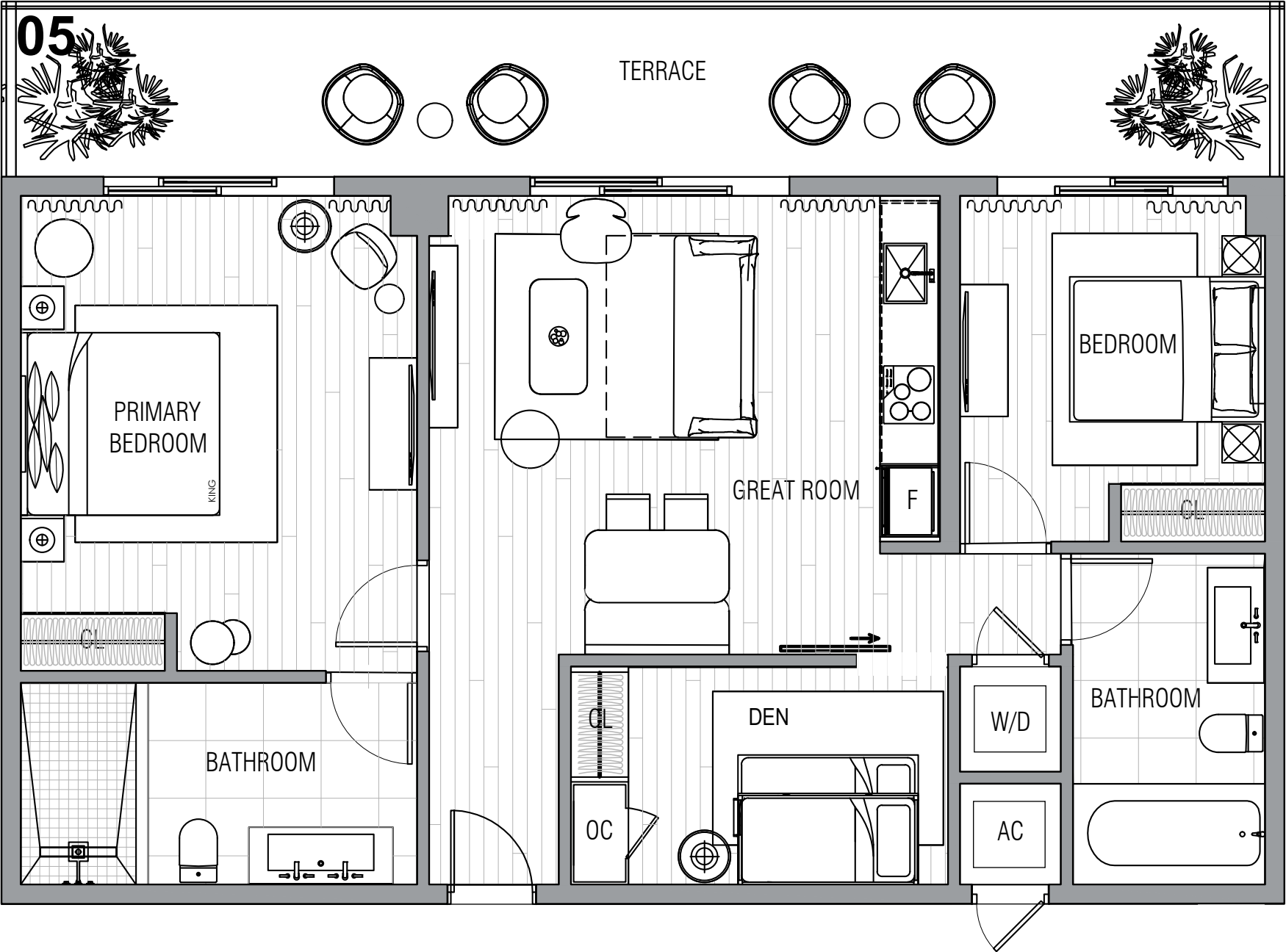
Lines 03 & 05

2 BEDROOMS + DEN
2 BATHROOMS

INTERIOR
1110 SQ. FT.

EXTERIOR
265 SQ. FT.

TOTAL
1375 SQ. FT.



Disclaimers:

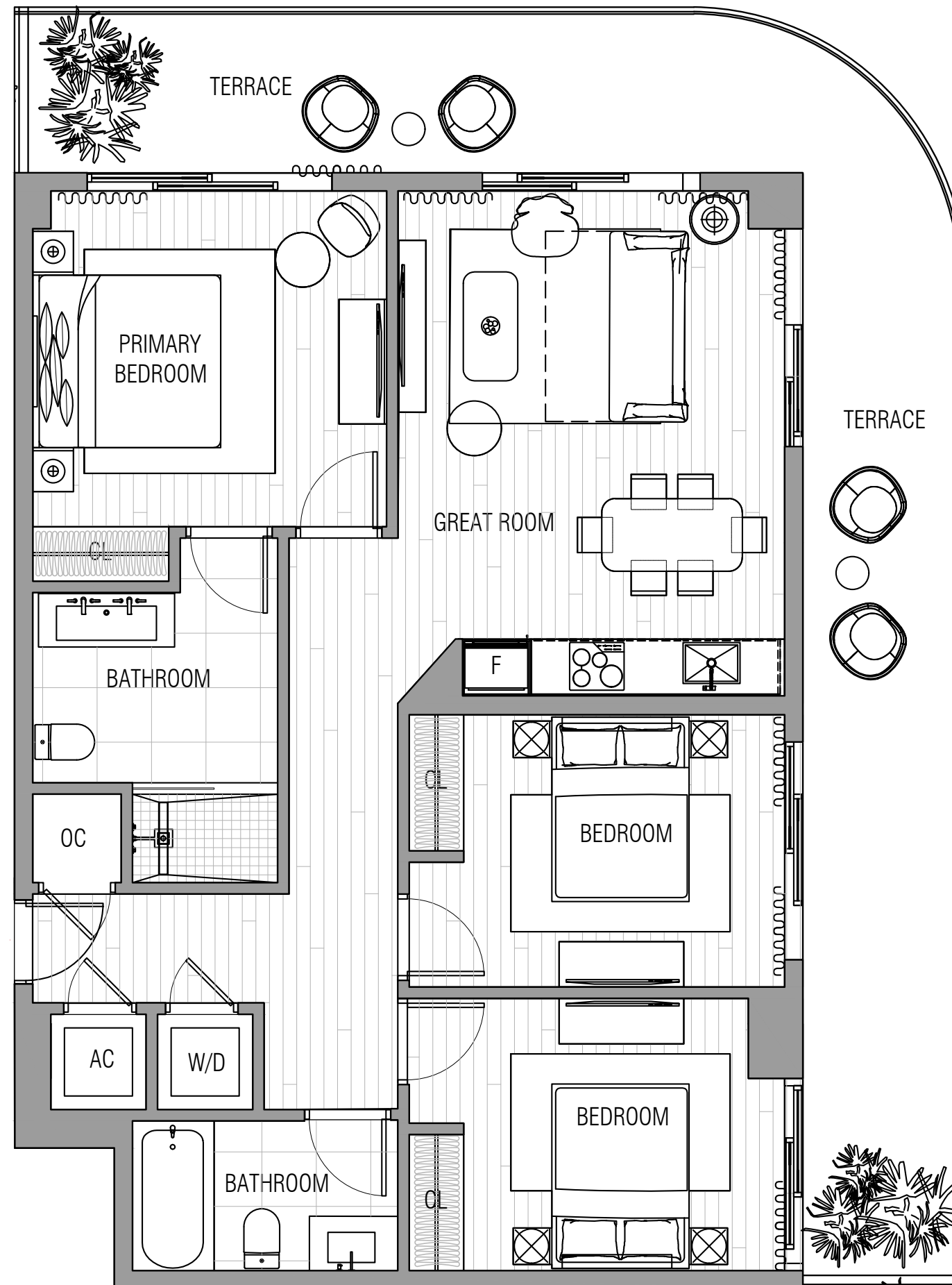
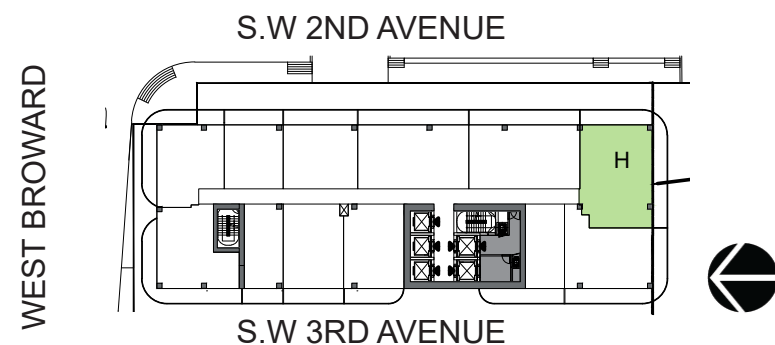
(a)The sketches, renderings, graphic materials, plans, specifications, terms, conditions and statements contained herein are proposed only, and the Developer reserves the right to modify, revise or withdraw any or all of same in its sole discretion and without prior notice. All improvements, designs and construction are subject to first obtaining the appropriate federal, state and local permits and approvals for same.

(b)Any drawings and depictions are conceptual only and are for the convenience of reference. They should not be relied upon as representations, express or implied, of the final detail of the residences. The Developer expressly reserves the right to make modifications, revisions, and changes it deems desirable in its sole and absolute discretion. All depictions of appliances, counters, soffits, floor coverings and other matters of detail are conceptual only and are not necessarily included in each Unit. Consult your Agreement and the Offering Documents for the items included with the Unit. Dimensions and square footage are approximate and may vary with actual construction.

(c)All fixtures and items of finish and decoration are for display only and are not to be included with the unit. Consult the Offering Documents and the Agreement for a description of those features which are to be included in the units.

(d)The features, plans and specifications described above are proposed only, and the Developer reserves the right to modify, revise or withdraw any or all of same in its sole discretion and without prior notice. Without limiting the generality of the foregoing, Developer reserves the right to substitute any of the foregoing with items of similar or better value, in Developer's opinion.

**TOTAL
1580 SQ. FT.**



Disclaimers:

(a) The sketches, renderings, graphic materials, plans, specifications, terms, conditions and statements contained herein are proposed only, and the Developer reserves the right to modify, revise or withdraw any or all of same in its sole discretion and without prior notice. All improvements, designs and construction are subject to first obtaining the appropriate federal, state and local permits and approvals for same.

(b) Any drawings and depictions are conceptual only and are for the convenience of reference. They should not be relied upon as representations, express or implied, of the final detail of the residences. The Developer expressly reserves the right to make modifications, revisions, and changes it deems desirable in its sole and absolute discretion. All depictions of appliances, counters, soffits, floor coverings and other matters of detail are conceptual only and are not necessarily included in each Unit. Consult your Agreement and the Offering Documents for the items included with the Unit. Dimensions and square footage are approximate and may vary with actual construction.

(c) All fixtures and items of finish and decoration are for display only and are not to be included with the unit. Consult the Offering Documents and the Agreement for a description of those features which are to be included in the units.

(d) The features, plans and specifications described above are proposed only, and the Developer reserves the right to modify, revise or withdraw any or all of same in its sole discretion and without prior notice. Without limiting the generality of the foregoing, Developer reserves the right to substitute any of the foregoing with items of similar or better value, in Developer's opinion.