

TOWER 1, RESIDENCE 01

Future residences located at:
801 Seabreeze Blvd.
Fort Lauderdale, FL 33316

SRRBahiaMar.com
954 282 7300

Temporary Sales Gallery:
1 North Fort Lauderdale Beach Blvd.
Lobby Level
Fort Lauderdale, FL 33304

 RELATED

 TATE
TATE CAPITAL

 ROK 

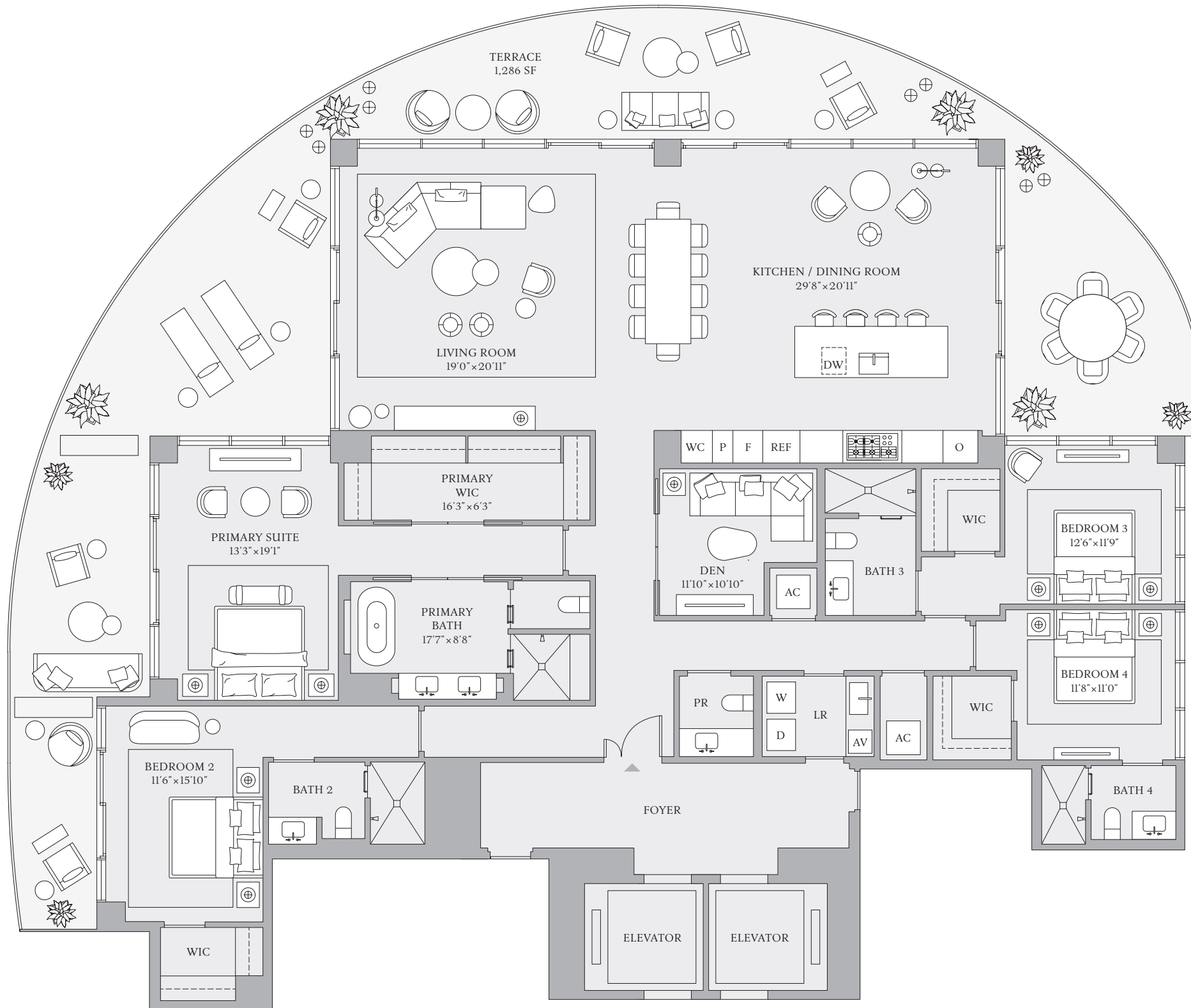
 Douglas Elliman
Development Marketing

ORAL REPRESENTATIONS CANNOT BE RELIED UPON AS CORRECTLY STATING REPRESENTATIONS OF THE DEVELOPER. FOR CORRECT REPRESENTATIONS, MAKE REFERENCE TO THIS BROCHURE AND THE DOCUMENTS REQUIRED BY SECTION 718.503, FLORIDA STATUTES, TO BE FURNISHED BY A DEVELOPER TO A BUYER OR LESSEE.

The St. Regis Residences Bahia Mar Fort Lauderdale, referred to for ease of reference as St Regis Residences is a community of three towers: including Tower 1 of condominium residences developed by PRH/TRR BM Tower 1, LLC; Tower 2 of condominium residences developed by PRH/TRR BM Tower 2, LLC; and Resort Tower 3 which includes a condominium within a portion of a building or within a multiple parcel building developed by PRH/TRR BM Condo, LLC. For ease of reference, PRH/TRR BM Tower 1, LLC, PRH/TRR BM Tower 2, LLC, and PRH/TRR BM Condo, LLC are each a “Developer” and collectively the “Developers.” St Regis Residences are not owned, developed, or sold by Marriott International, Inc. or its affiliates (“Marriott”). The Developers use the St. Regis marks under a license from licensor, Marriott, which has not confirmed the accuracy of any of the statements or representations made about the projects by Developers. The Developers each also use the trade names, marks, and logos of the licensor, The Related Group®, which licensor is not a Developer of any tower. Artist’s conceptual renderings of exterior or site plan and depicting water, marina, surrounding buildings, or landmarks are modified with some surrounding buildings and landmarks omitted. Sketches, renderings, or photographs depicting lifestyle, amenities, food services, resort services, finishes, designs, materials, furnishings, plans, specifications, or art contained in this brochure are proposed only. The St. Regis Residences are developed on a site that is near water, but water access is not guaranteed. No specific view is guaranteed. The associations for each tower will be a part of a master association which will require payment of master association assessments. Some amenities described require payment of fees in addition to regular assessment payments. Consult the Developers’ Prospectus for the tower in which you desire to purchase to understand the offering, the amenities, the proposed budgets, terms, conditions, specifications, fees, unit dimensions and size calculation method, site plans, and to learn what is included with the purchase and the payment of regular assessments. The Developers are not residents of the State of New York, and the offerings of Developers are not intended for residents of New York nor any other jurisdiction in which such an offering is prohibited. 2024 © by PRH/TRR BM Tower 1, LLC, PRH/TRR BM Tower 2, LLC, and PRH/TRR BM Condo, LLC, with all rights reserved. 𐀀

4 BEDROOMS | 4 BATHROOMS | POWDER ROOM | DEN

INTERIOR: 3,550 SF | 330 SQM EXTERIOR: 1,286 SF | 119 SQM TOTAL: 4,836 SF | 449 SQM



TOWER 1 RESIDENCE 01

FLOORS 3-23

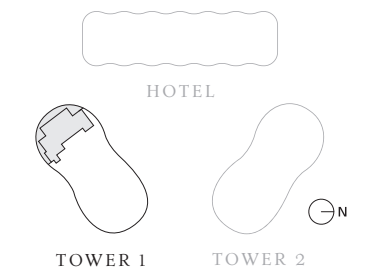
4 BEDROOMS
4 BATHROOMS
POWDER ROOM
DEN

INTERIOR
3,550 SF | 330 SQM

EXTERIOR
1,286 SF | 119 SQM

TOTAL
4,836 SF | 449 SQM

INTRACOASTAL WATERWAY



ATLANTIC OCEAN



The dimensions stated for any depicted unit floor plan are approximate because there are various recognized methods for calculating the square footage of a unit. The square footage stated herein is calculated from the exterior boundaries of the exterior walls to the centerline of interior demising walls without deductions for cutouts, curves, or architectural features. This method results in quoted dimensions greater than the dimensions that would be determined by using other accepted methods. The definition of "Unit" and the calculation method to be relied upon is set forth by the Developer in the Developer's Prospectus. The method set forth in the Developer's Prospectus is another commonly accepted method of calculation, but it will result in a square footage calculation that is less than the method used here. The illustrated layout, locations of windows, doors, closets, plumbing fixtures, mechanical equipment, appliances, structural elements, architectural elements, and the uses, configurations, and entries to rooms are conceptual and may change based on final approved plans, permitting, and completed construction. The illustrated furniture and the uses of space are suggested uses only and are not intended to represent or guarantee any specific use of space or accommodation of specific furnishings. Furnishings, design features, fixtures, and décor illustrated are not included with a unit purchase. Consult the Developer's Prospectus to understand what is offered with the purchase and the calculation of the Unit square footage and dimensions to be relied upon. 2024 © by PRH/TRR BM Condo, LLC, with all rights reserved. ®



TOWER 1, RESIDENCE 02

Future residences located at:
801 Seabreeze Blvd.
Fort Lauderdale, FL 33316

SRRBahiaMar.com
954 282 7300

Temporary Sales Gallery:
1 North Fort Lauderdale Beach Blvd.
Lobby Level
Fort Lauderdale, FL 33304



ORAL REPRESENTATIONS CANNOT BE RELIED UPON AS CORRECTLY STATING REPRESENTATIONS OF THE DEVELOPER. FOR CORRECT REPRESENTATIONS, MAKE REFERENCE TO THIS BROCHURE AND THE DOCUMENTS REQUIRED BY SECTION 718.503, FLORIDA STATUTES, TO BE FURNISHED BY A DEVELOPER TO A BUYER OR LESSEE.

The St. Regis Residences Bahia Mar Fort Lauderdale, referred to for ease of reference as St Regis Residences is a community of three towers: including Tower 1 of condominium residences developed by PRH/TRR BM Tower 1, LLC; Tower 2 of condominium residences developed by PRH/TRR BM Tower 2, LLC; and Resort Tower 3 which includes a condominium within a portion of a building or within a multiple parcel building developed by PRH/TRR BM Condo, LLC. For ease of reference, PRH/TRR BM Tower 1, LLC, PRH/TRR BM Tower 2, LLC, and PRH/TRR BM Condo, LLC are each a “Developer” and collectively the “Developers.” St Regis Residences are not owned, developed, or sold by Marriott International, Inc. or its affiliates (“Marriott”). The Developers use the St. Regis marks under a license from licensor, Marriott, which has not confirmed the accuracy of any of the statements or representations made about the projects by Developers. The Developers each also use the trade names, marks, and logos of the licensor, The Related Group,® which licensor is not a Developer of any tower. Artist’s conceptual renderings of exterior or site plan and depicting water, marina, surrounding buildings, or landmarks are modified with some surrounding buildings and landmarks omitted. Sketches, renderings, or photographs depicting lifestyle, amenities, food services, resort services, finishes, designs, materials, furnishings, plans, specifications, or art contained in this brochure are proposed only. The St. Regis Residences are developed on a site that is near water, but water access is not guaranteed. No specific view is guaranteed. The associations for each tower will be a part of a master association which will require payment of master association assessments. Some amenities described require payment of fees in addition to regular assessment payments. Consult the Developers’ Prospectus for the tower in which you desire to purchase to understand the offering, the amenities, the proposed budgets, terms, conditions, specifications, fees, unit dimensions and size calculation method, site plans, and to learn what is included with the purchase and the payment of regular assessments. The Developers are not residents of the State of New York, and the offerings of Developers are not intended for residents of New York nor any other jurisdiction in which such an offering is prohibited. 2024 © by PRH/TRR BM Tower 1, LLC, PRH/TRR BM Tower 2, LLC, and PRH/TRR BM Condo, LLC, with all rights reserved. 𐀀

3 BEDROOMS | 3 BATHROOMS | POWDER ROOM | DEN
INTERIOR: 2,611 SF | 242 SQM EXTERIOR: 284 SF | 26 SQM TOTAL: 2,895 SF | 268 SQM



TOWER 1 RESIDENCE 02

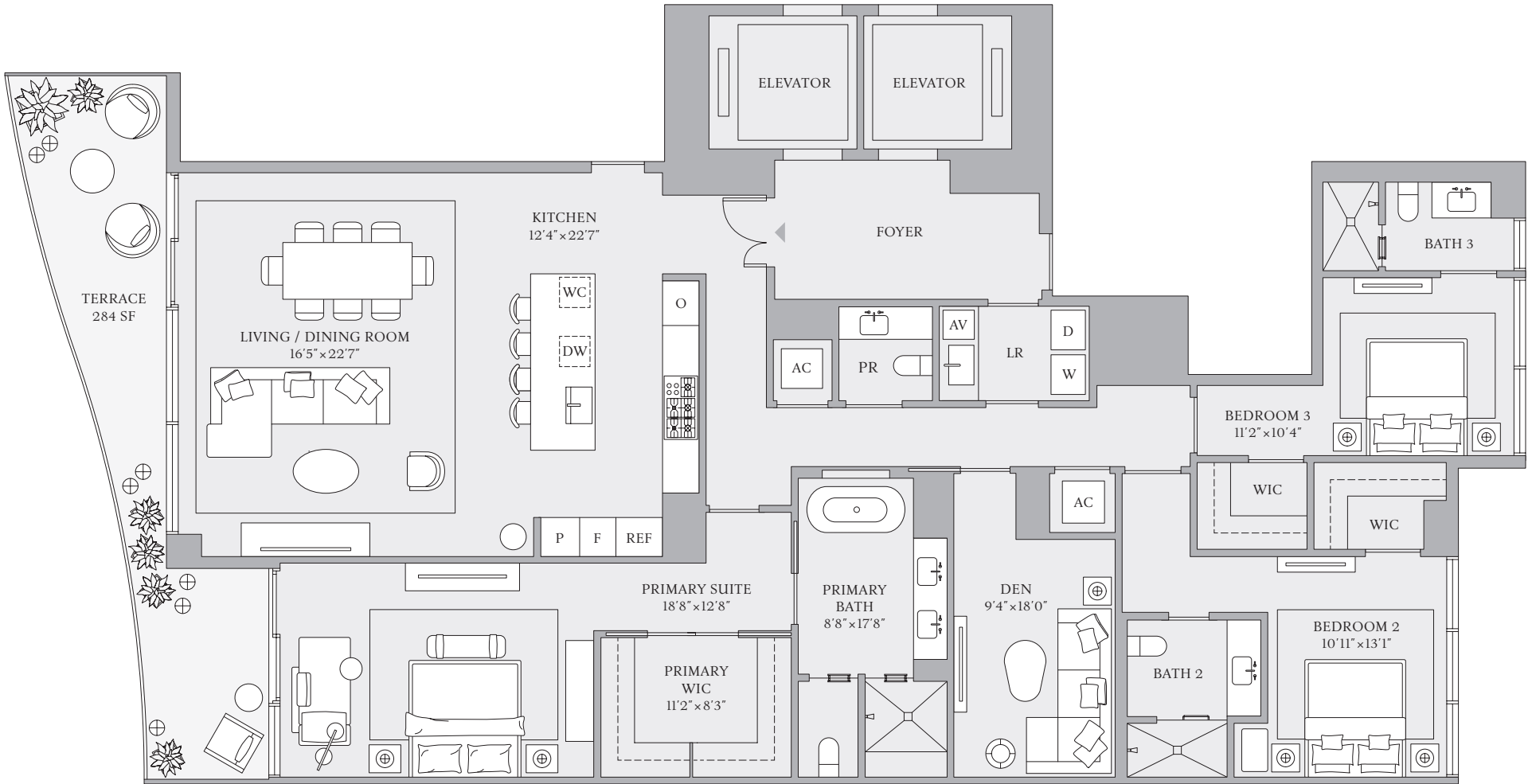
FLOORS 3–23

3 BEDROOMS
3 BATHROOMS
POWDER ROOM
DEN

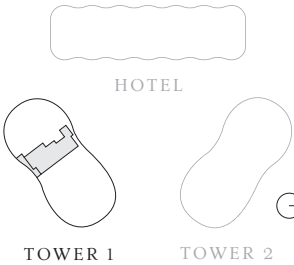
INTERIOR
2,611 SF | 242 SQM

EXTERIOR
284 SF | 26 SQM

TOTAL
2,895 SF | 268 SQM



INTRACOASTAL WATERWAY



ATLANTIC OCEAN



The dimensions stated for any depicted unit floor plan are approximate because there are various recognized methods for calculating the square footage of a unit. The square footage stated herein is calculated from the exterior boundaries of the exterior walls to the centerline of interior demising walls without deductions for cutouts, curves, or architectural features. This method results in quoted dimensions greater than the dimensions that would be determined by using other accepted methods. The definition of "Unit" and the calculation method to be relied upon is set forth by the Developer in the Developer's Prospectus. The method set forth in the Developer's Prospectus is another commonly accepted method of calculation, but it will result in a square footage calculation that is less than the method used here. The illustrated layout, locations of windows, doors, closets, plumbing fixtures, mechanical equipment, appliances, structural elements, architectural elements, and the uses, configurations, and entries to rooms are conceptual and may change based on final approved plans, permitting, and completed construction. The illustrated furniture and the uses of space are suggested uses only and are not intended to represent or guarantee any specific use of space or accommodation of specific furnishings. Furnishings, design features, fixtures, and décor illustrated are not included with a unit purchase. Consult the Developer's Prospectus to understand what is offered with the purchase and the calculation of the Unit square footage and dimensions to be relied upon. 2024 © by PRH/TRR BM Condo, LLC, with all rights reserved. ®

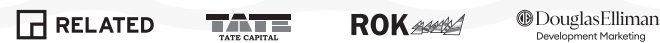


TOWER 1, RESIDENCE 03

Future residences located at:
801 Seabreeze Blvd.
Fort Lauderdale, FL 33316

SRRBahiaMar.com
954 282 7300

Temporary Sales Gallery:
1 North Fort Lauderdale Beach Blvd.
Lobby Level
Fort Lauderdale, FL 33304



ORAL REPRESENTATIONS CANNOT BE RELIED UPON AS CORRECTLY STATING REPRESENTATIONS OF THE DEVELOPER. FOR CORRECT REPRESENTATIONS, MAKE REFERENCE TO THIS BROCHURE AND THE DOCUMENTS REQUIRED BY SECTION 718.503, FLORIDA STATUTES, TO BE FURNISHED BY A DEVELOPER TO A BUYER OR LESSEE.

The St. Regis Residences Bahia Mar Fort Lauderdale, referred to for ease of reference as St Regis Residences is a community of three towers: including Tower 1 of condominium residences developed by PRH/TRR BM Tower 1, LLC; Tower 2 of condominium residences developed by PRH/TRR BM Tower 2, LLC; and Resort Tower 3 which includes a condominium within a portion of a building or within a multiple parcel building developed by PRH/TRR BM Condo, LLC. For ease of reference, PRH/TRR BM Tower 1, LLC, PRH/TRR BM Tower 2, LLC, and PRH/TRR BM Condo, LLC are each a “Developer” and collectively the “Developers.” St Regis Residences are not owned, developed, or sold by Marriott International, Inc. or its affiliates (“Marriott”). The Developers use the St. Regis marks under a license from licensor, Marriott, which has not confirmed the accuracy of any of the statements or representations made about the projects by Developers. The Developers each also use the trade names, marks, and logos of the licensor, The Related Group®, which licensor is not a Developer of any tower. Artist’s conceptual renderings of exterior or site plan and depicting water, marina, surrounding buildings, or landmarks are modified with some surrounding buildings and landmarks omitted. Sketches, renderings, or photographs depicting lifestyle, amenities, food services, resort services, finishes, designs, materials, furnishings, plans, specifications, or art contained in this brochure are proposed only. The St. Regis Residences are developed on a site that is near water, but water access is not guaranteed. No specific view is guaranteed. The associations for each tower will be a part of a master association which will require payment of master association assessments. Some amenities described require payment of fees in addition to regular assessment payments. Consult the Developers’ Prospectus for the tower in which you desire to purchase to understand the offering, the amenities, the proposed budgets, terms, conditions, specifications, fees, unit dimensions and size calculation method, site plans, and to learn what is included with the purchase and the payment of regular assessments. The Developers are not residents of the State of New York, and the offerings of Developers are not intended for residents of New York nor any other jurisdiction in which such an offering is prohibited. 2024 © by PRH/TRR BM Tower 1, LLC, PRH/TRR BM Tower 2, LLC, and PRH/TRR BM Condo, LLC, with all rights reserved. 𐀀

3 BEDROOMS | 3 BATHROOMS | POWDER ROOM | DEN
INTERIOR: 2,611 SF | 242 SQM EXTERIOR: 284 SF | 26 SQM TOTAL: 2,895 SF | 268 SQM



TOWER 1 RESIDENCE 03

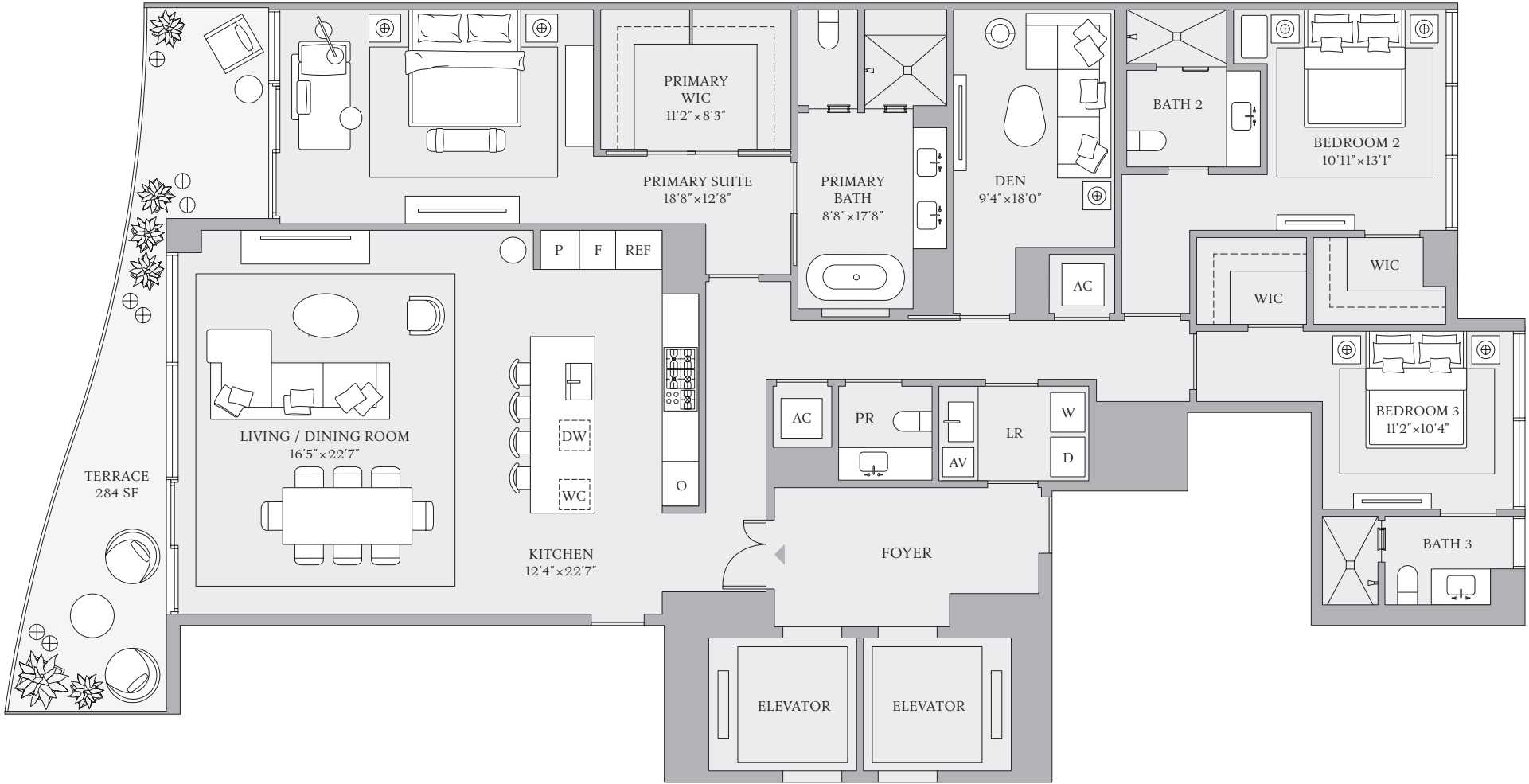
FLOORS 3–23

3 BEDROOMS
3 BATHROOMS
POWDER ROOM
DEN

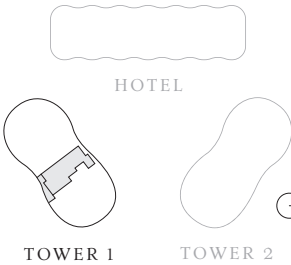
INTERIOR
2,611 SF | 242 SQM

EXTERIOR
284 SF | 26 SQM

TOTAL
2,895 SF | 268 SQM



INTRACOASTAL WATERWAY



ATLANTIC OCEAN



The dimensions stated for any depicted unit floor plan are approximate because there are various recognized methods for calculating the square footage of a unit. The square footage stated herein is calculated from the exterior boundaries of the exterior walls to the centerline of interior demising walls without deductions for cutouts, curves, or architectural features. This method results in quoted dimensions greater than the dimensions that would be determined by using other accepted methods. The definition of "Unit" and the calculation method to be relied upon is set forth by the Developer in the Developer's Prospectus. The method set forth in the Developer's Prospectus is another commonly accepted method of calculation, but it will result in a square footage calculation that is less than the method used here. The illustrated layout, locations of windows, doors, closets, plumbing fixtures, mechanical equipment, appliances, structural elements, architectural elements, and the uses, configurations, and entries to rooms are conceptual and may change based on final approved plans, permitting, and completed construction. The illustrated furniture and the uses of space are suggested uses only and are not intended to represent or guarantee any specific use of space or accommodation of specific furnishings. Furnishings, design features, fixtures, and décor illustrated are not included with a unit purchase. Consult the Developer's Prospectus to understand what is offered with the purchase and the calculation of the Unit square footage and dimensions to be relied upon. 2024 © by PRH/TRR BM Condo, LLC, with all rights reserved. 9

TOWER 1, RESIDENCE 04

Future residences located at:

801 Seabreeze Blvd.

Fort Lauderdale, FL 33316

SRRBahiaMar.com


954 282 7300


Temporary Sales Gallery:



1 North Fort Lauderdale Beach Blvd.


Lobby Level

Fort Lauderdale, FL 33304

 RELATED

 TATE
TATE CAPITAL

 ROK 

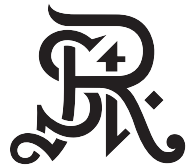
 Douglas Elliman
Development Marketing

ORAL REPRESENTATIONS CANNOT BE RELIED UPON AS CORRECTLY STATING REPRESENTATIONS OF THE DEVELOPER. FOR CORRECT REPRESENTATIONS, MAKE REFERENCE TO THIS BROCHURE AND THE DOCUMENTS REQUIRED BY SECTION 718.503, FLORIDA STATUTES, TO BE FURNISHED BY A DEVELOPER TO A BUYER OR LESSEE.

The St. Regis Residences Bahia Mar Fort Lauderdale, referred to for ease of reference as St Regis Residences is a community of three towers: including Tower 1 of condominium residences developed by PRH/TRR BM Tower 1, LLC; Tower 2 of condominium residences developed by PRH/TRR BM Tower 2, LLC; and Resort Tower 3 which includes a condominium within a portion of a building or within a multiple parcel building developed by PRH/TRR BM Condo, LLC. For ease of reference, PRH/TRR BM Tower 1, LLC, PRH/TRR BM Tower 2, LLC, and PRH/TRR BM Condo, LLC are each a “Developer” and collectively the “Developers.” St Regis Residences are not owned, developed, or sold by Marriott International, Inc. or its affiliates (“Marriott”). The Developers use the St. Regis marks under a license from licensor, Marriott, which has not confirmed the accuracy of any of the statements or representations made about the projects by Developers. The Developers each also use the trade names, marks, and logos of the licensor, The Related Group®, which licensor is not a Developer of any tower. Artist’s conceptual renderings of exterior or site plan and depicting water, marina, surrounding buildings, or landmarks are modified with some surrounding buildings and landmarks omitted. Sketches, renderings, or photographs depicting lifestyle, amenities, food services, resort services, finishes, designs, materials, furnishings, plans, specifications, or art contained in this brochure are proposed only. The St. Regis Residences are developed on a site that is near water, but water access is not guaranteed. No specific view is guaranteed. The associations for each tower will be a part of a master association which will require payment of master association assessments. Some amenities described require payment of fees in addition to regular assessment payments. Consult the Developers’ Prospectus for the tower in which you desire to purchase to understand the offering, the amenities, the proposed budgets, terms, conditions, specifications, fees, unit dimensions and size calculation method, site plans, and to learn what is included with the purchase and the payment of regular assessments. The Developers are not residents of the State of New York, and the offerings of Developers are not intended for residents of New York nor any other jurisdiction in which such an offering is prohibited. 2024 © by PRH/TRR BM Tower 1, LLC, PRH/TRR BM Tower 2, LLC, and PRH/TRR BM Condo, LLC, with all rights reserved. 𐀀

4 BEDROOMS | 4 BATHROOMS | POWDER ROOM | DEN

INTERIOR: 3,116 SF | 289 SQM EXTERIOR: 1,020 SF | 95 SQM TOTAL: 4,136 SF | 384 SQM



TOWER 1
RESIDENCE 04

FLOORS 3–23

4 BEDROOMS
4 BATHROOMS
POWDER ROOM
DEN

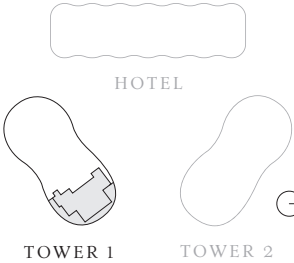
INTERIOR
3,116 SF | 289 SQM

EXTERIOR
1,020 SF | 95 SQM

TOTAL
4,136 SF | 384 SQM



INTRACOASTAL WATERWAY



ATLANTIC OCEAN



The dimensions stated for any depicted unit floor plan are approximate because there are various recognized methods for calculating the square footage of a unit. The square footage stated herein is calculated from the exterior boundaries of the exterior walls to the centerline of interior demising walls without deductions for cutouts, curves, or architectural features. This method results in quoted dimensions greater than the dimensions that would be determined by using other accepted methods. The definition of "Unit" and the calculation method to be relied upon is set forth by the Developer in the Developer's Prospectus. The method set forth in the Developer's Prospectus is another commonly accepted method of calculation, but it will result in a square footage calculation that is less than the method used here. The illustrated layout, locations of windows, doors, closets, plumbing fixtures, mechanical equipment, appliances, structural elements, architectural elements, and the uses, configurations, and entries to rooms are conceptual and may change based on final approved plans, permitting, and completed construction. The illustrated furniture and the uses of space are suggested uses only and are not intended to represent or guarantee any specific use of space or accommodation of specific furnishings. Furnishings, design features, fixtures, and décor illustrated are not included with a unit purchase. Consult the Developer's Prospectus to understand what is offered with the purchase and the calculation of the Unit square footage and dimensions to be relied upon. 2024 © by PRH/TRR BM Condo, LLC, with all rights reserved. ®