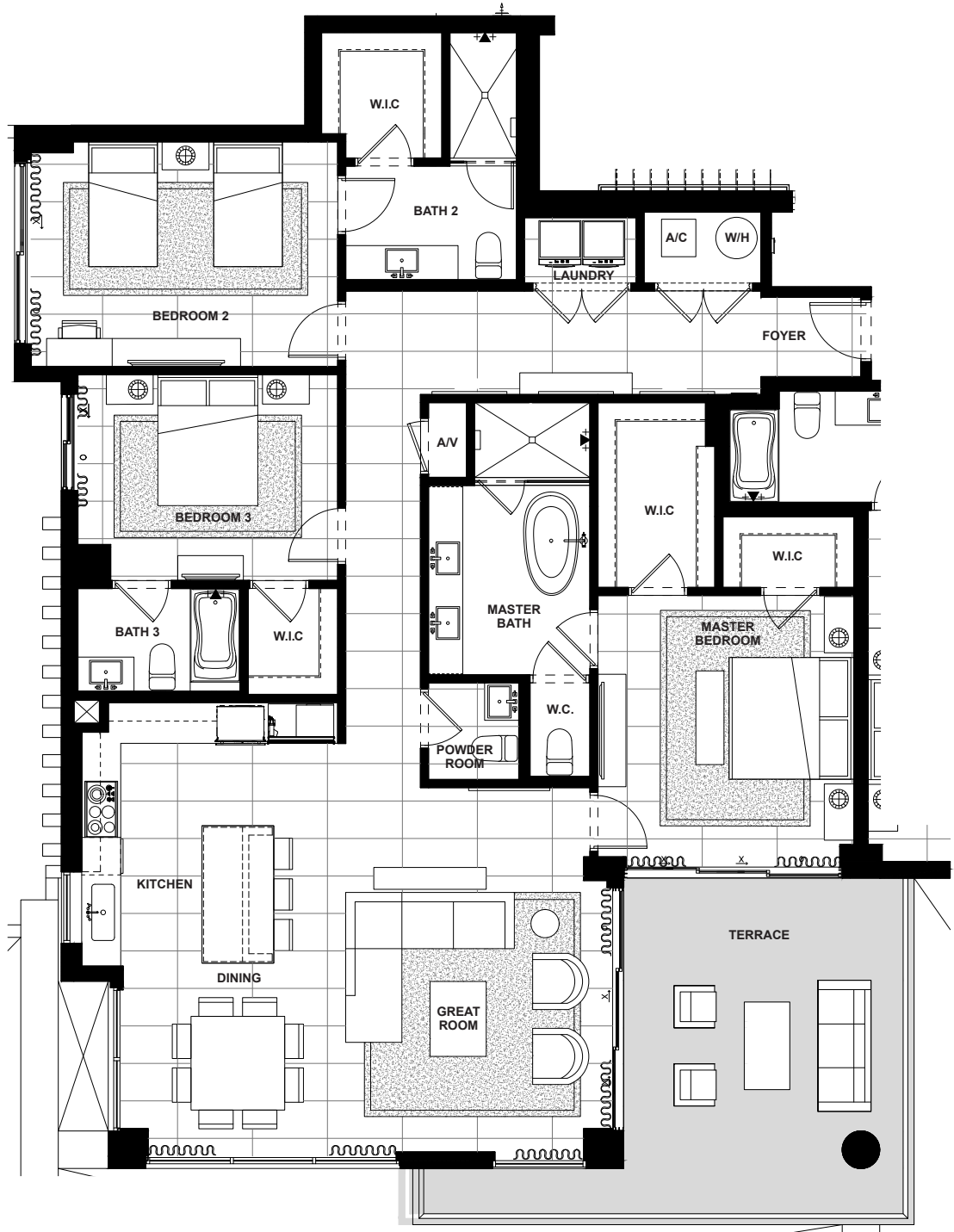
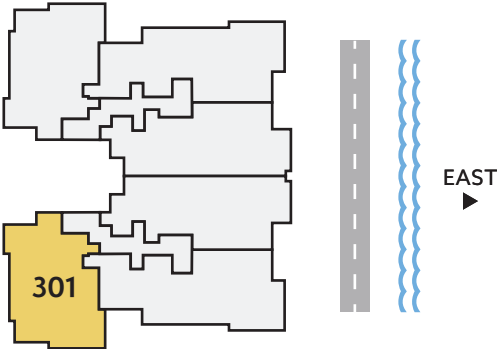


Residence 301




THIRD FLOOR



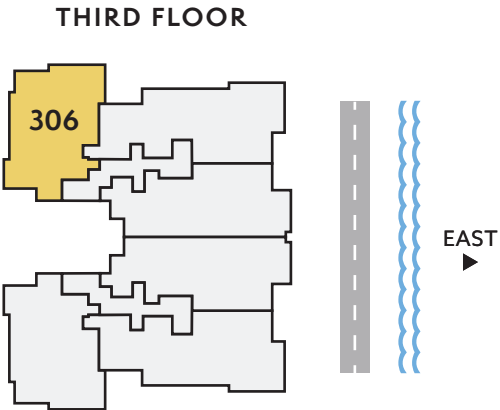
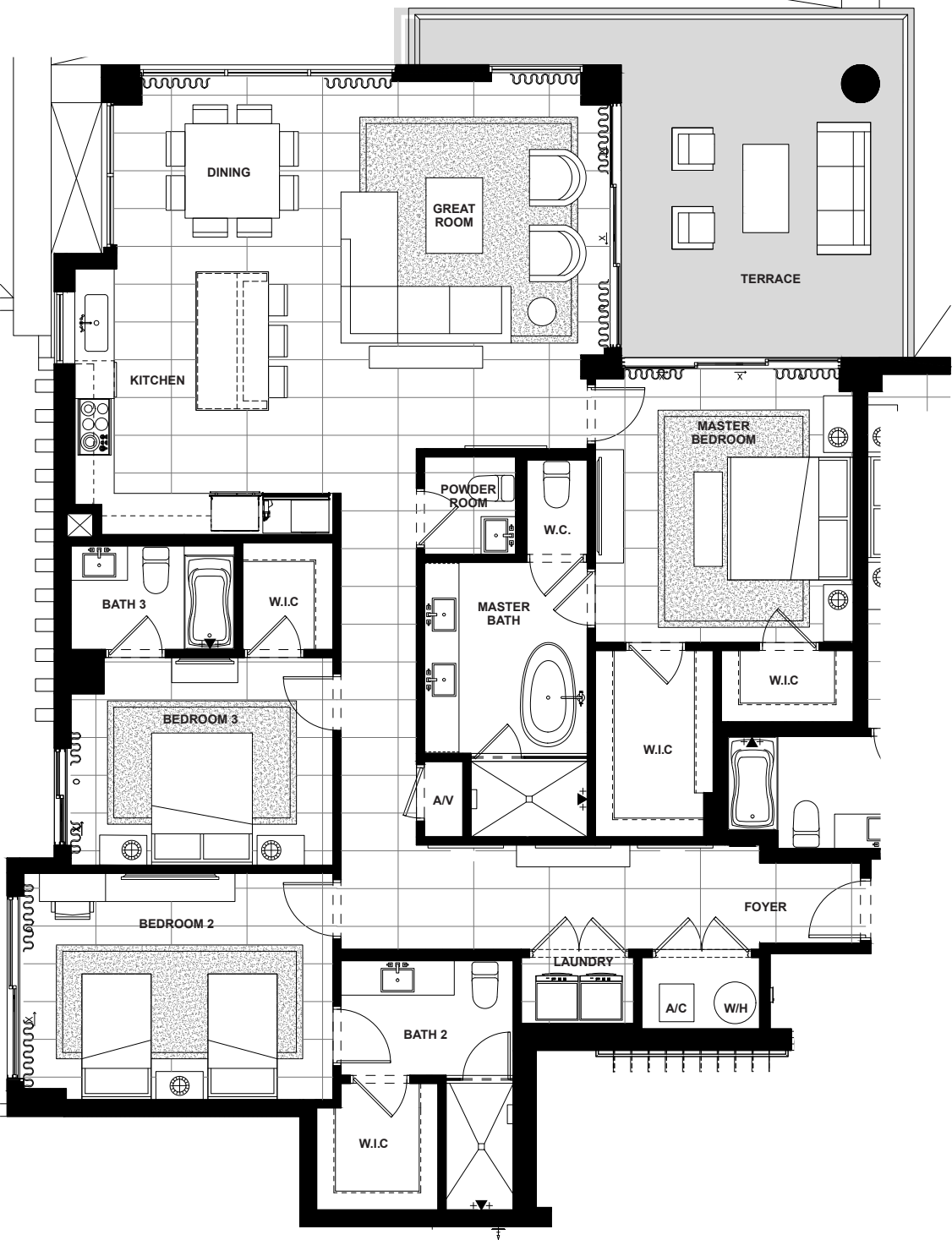
SOUTH/ WEST DIRECTION	3	3.5	2,106	320	2,426
	BEDROOMS	BATHS	A/C LIVING AREA	COVERED TERRACES	TOTAL S.F.

Artist's conceptual illustration only. Subject to modification.

 ORAL REPRESENTATIONS CANNOT BE RELIED UPON AS CORRECTLY STATING REPRESENTATIONS OF THE SELLER. FOR CORRECT REPRESENTATIONS, MAKE REFERENCE TO THIS BROCHURE AND TO THE DOCUMENTS REQUIRED BY SECTION 718.503, FLORIDA STATUTES TO BE FURNISHED BY A SELLER TO A BUYER OR LESSEE.


All dimensions, features, and specifications are approximate and subject to change without notice. Square footage listed above represents marketing square footage (please refer to section 3.2 of the Declaration and Exhibit 5 for more information). Brokers warmly welcomed.

Residence 306



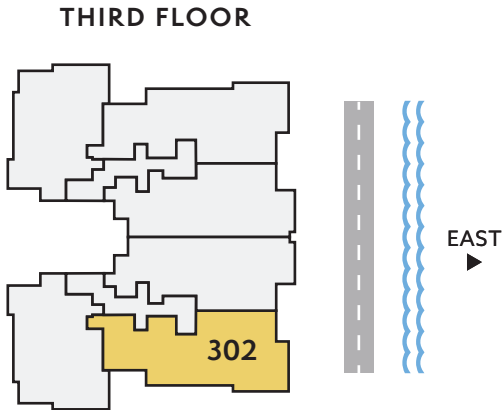
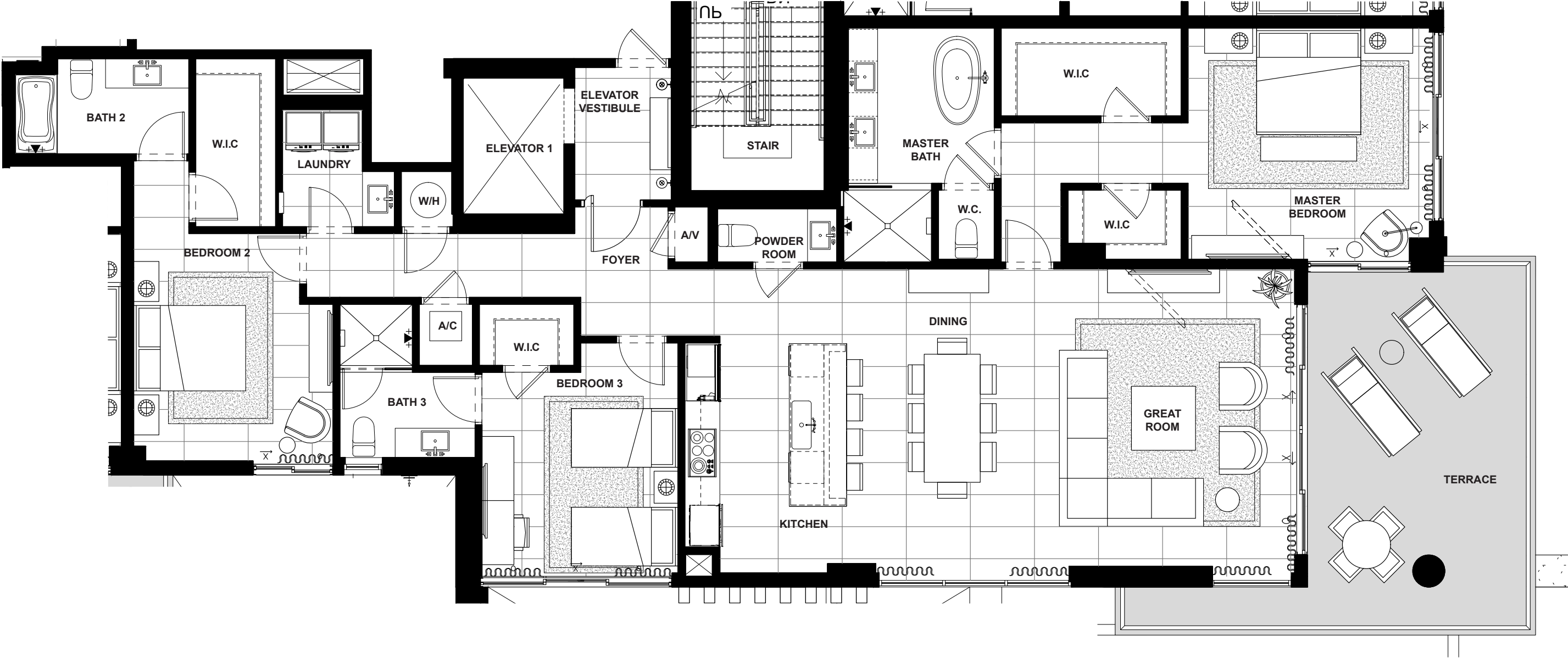
NORTH/ WEST DIRECTION	3	3.5	2,106	320	2,426
	BEDROOMS	BATHS	A/C LIVING AREA	COVERED TERRACES	TOTAL S.F.

Artist's conceptual illustration only. Subject to modification.

 ORAL REPRESENTATIONS CANNOT BE RELIED UPON AS CORRECTLY STATING REPRESENTATIONS OF THE SELLER. FOR CORRECT REPRESENTATIONS, MAKE REFERENCE TO THIS BROCHURE AND TO THE DOCUMENTS REQUIRED BY SECTION 718.503, FLORIDA STATUTES TO BE FURNISHED BY A SELLER TO A BUYER OR LESSEE.


All dimensions, features, and specifications are approximate and subject to change without notice. Square footage listed above represents marketing square footage (please refer to section 3.2 of the Declaration and Exhibit 5 for more information). Brokers warmly welcomed.

Residence 302



SOUTH/ EAST DIRECTION	3	3.5	2,308	365	2,673
	BEDROOMS	BATHS	A/C LIVING AREA	COVERED TERRACES	TOTAL S.F.

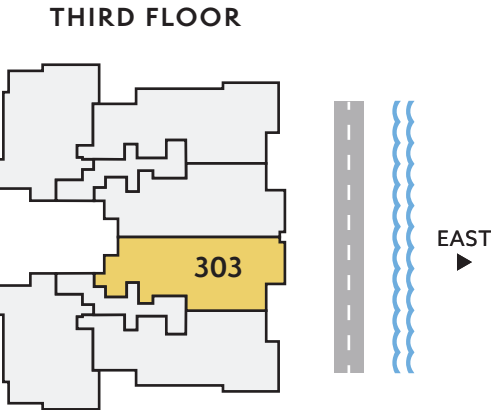
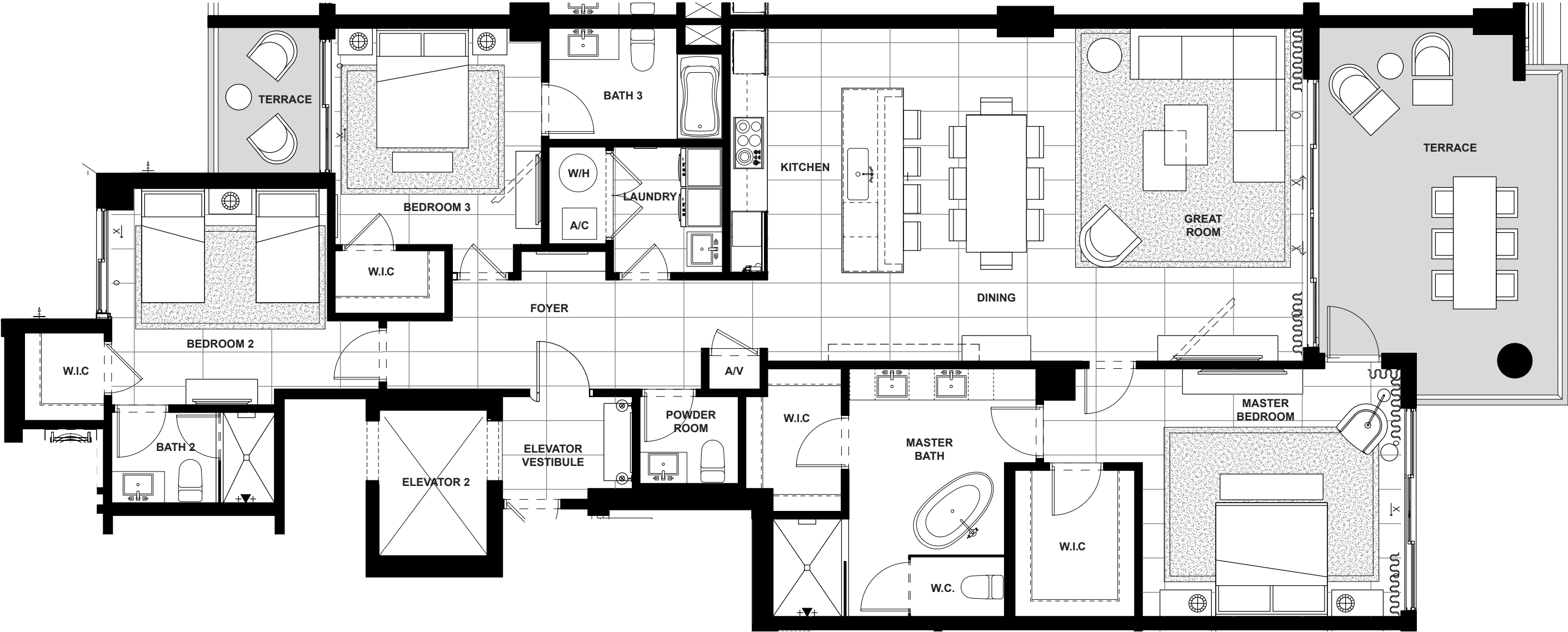
Artist's conceptual illustration only. Subject to modification.

 ORAL REPRESENTATIONS CANNOT BE RELIED UPON AS CORRECTLY STATING REPRESENTATIONS OF THE SELLER. FOR CORRECT REPRESENTATIONS, MAKE REFERENCE TO THIS BROCHURE AND TO THE DOCUMENTS REQUIRED BY SECTION 718.503, FLORIDA STATUTES TO BE FURNISHED BY A SELLER TO A BUYER OR LESSEE.

All dimensions, features, and specifications are approximate and subject to change without notice. Square footage listed above represents marketing square footage (please refer to section 3.2 of the Declaration and Exhibit 5 for more information). Brokers warmly welcomed.


SALATO
POMPANO BEACH

Residence 303



EAST DIRECTION	3 BEDROOMS	3.5 BATHS	2,132 A/C LIVING AREA	358 COVERED TERRACES	2,490 TOTAL S.F.
-------------------	---------------	--------------	-----------------------------	----------------------------	---------------------

Artist's conceptual illustration only. Subject to modification.

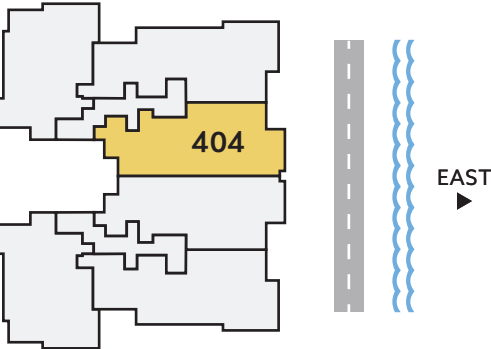
 ORAL REPRESENTATIONS CANNOT BE RELIED UPON AS CORRECTLY STATING REPRESENTATIONS OF THE SELLER. FOR CORRECT REPRESENTATIONS, MAKE REFERENCE TO THIS BROCHURE AND TO THE DOCUMENTS REQUIRED BY SECTION 718.503, FLORIDA STATUTES TO BE FURNISHED BY A SELLER TO A BUYER OR LESSEE.

All dimensions, features, and specifications are approximate and subject to change without notice. Square footage listed above represents marketing square footage (please refer to section 3.2 of the Declaration and Exhibit 5 for more information). Brokers warmly welcomed.

Residence 404




FOURTH FLOOR



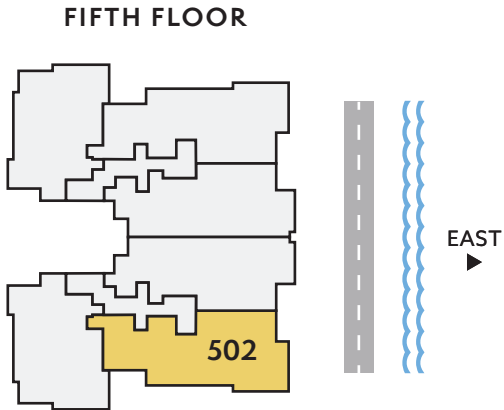
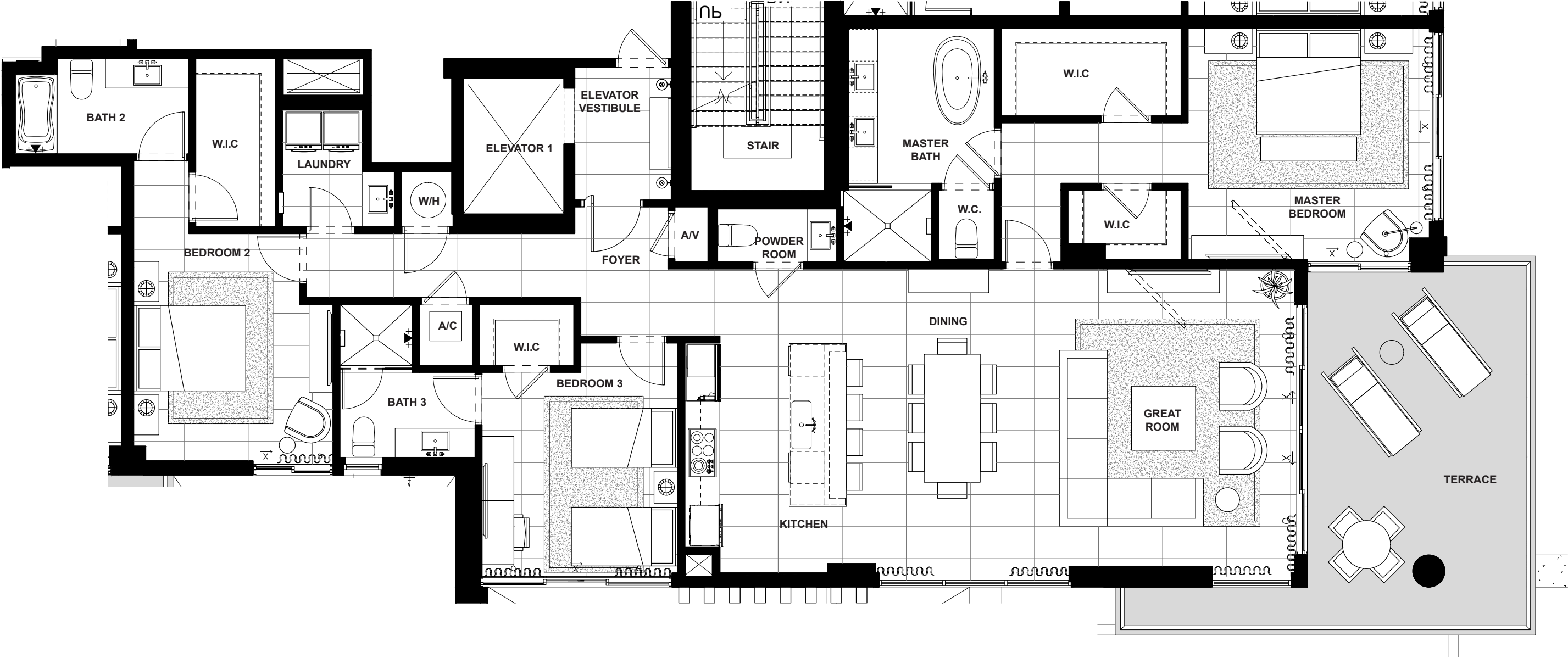
EAST DIRECTION	3 BEDROOMS	3.5 BATHS	2,132 A/C LIVING AREA	358 COVERED TERRACES	2,490 TOTAL S.F.
-------------------	---------------	--------------	-----------------------------	----------------------------	---------------------

Artist's conceptual illustration only. Subject to modification.

 ORAL REPRESENTATIONS CANNOT BE RELIED UPON AS CORRECTLY STATING REPRESENTATIONS OF THE SELLER. FOR CORRECT REPRESENTATIONS, MAKE REFERENCE TO THIS BROCHURE AND TO THE DOCUMENTS REQUIRED BY SECTION 718.503, FLORIDA STATUTES TO BE FURNISHED BY A SELLER TO A BUYER OR LESSEE.


All dimensions, features, and specifications are approximate and subject to change without notice. Square footage listed above represents marketing square footage (please refer to section 3.2 of the Declaration and Exhibit 5 for more information). Brokers warmly welcomed.

Residence 502



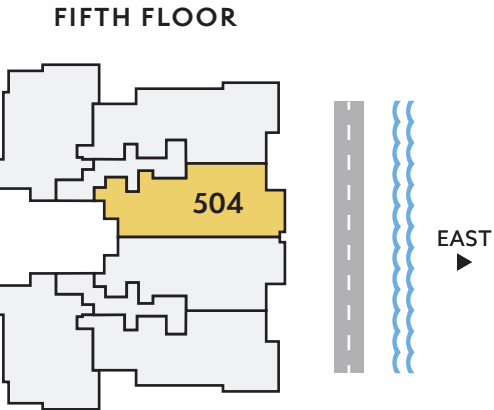
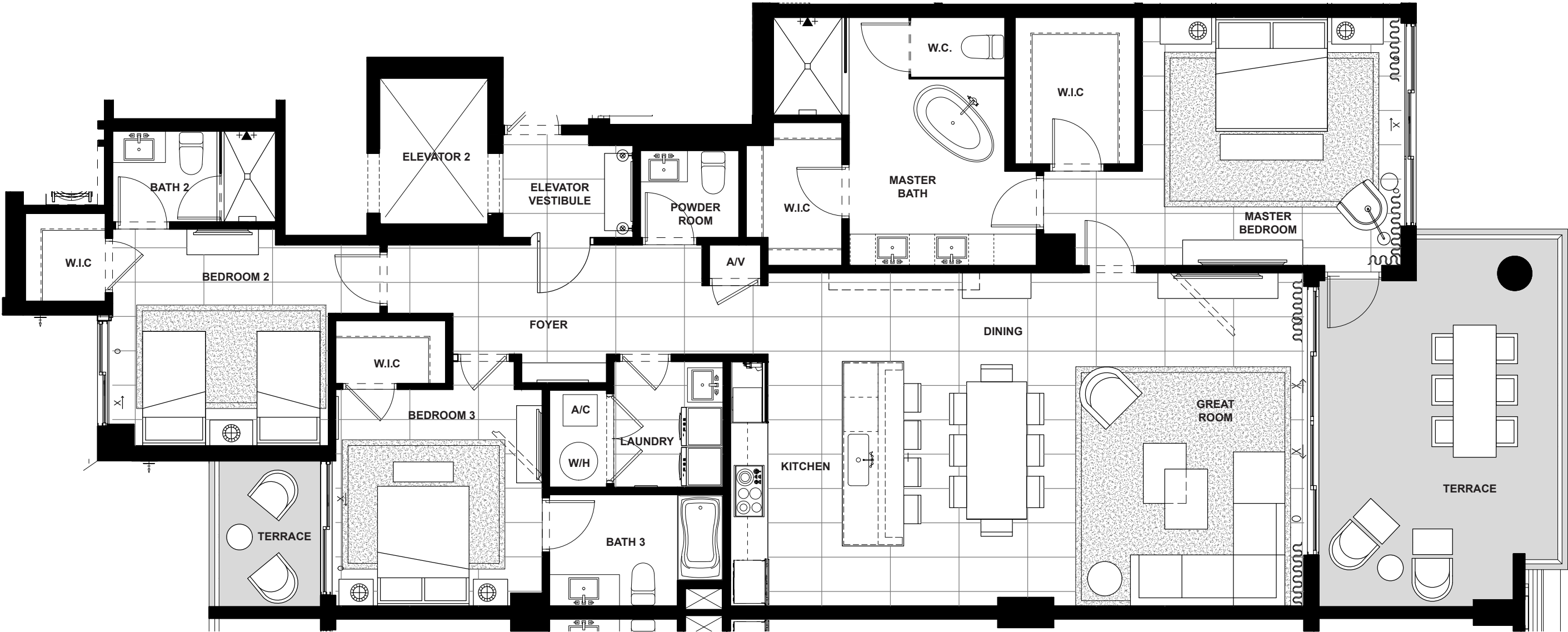
SOUTH/ EAST DIRECTION	3	3.5	2,308	365	2,673
	BEDROOMS	BATHS	A/C LIVING AREA	COVERED TERRACES	TOTAL S.F.

Artist's conceptual illustration only. Subject to modification.

 ORAL REPRESENTATIONS CANNOT BE RELIED UPON AS CORRECTLY STATING REPRESENTATIONS OF THE SELLER. FOR CORRECT REPRESENTATIONS, MAKE REFERENCE TO THIS BROCHURE AND TO THE DOCUMENTS REQUIRED BY SECTION 718.503, FLORIDA STATUTES TO BE FURNISHED BY A SELLER TO A BUYER OR LESSEE.

All dimensions, features, and specifications are approximate and subject to change without notice. Square footage listed above represents marketing square footage (please refer to section 3.2 of the Declaration and Exhibit 5 for more information). Brokers warmly welcomed.

Residence 504



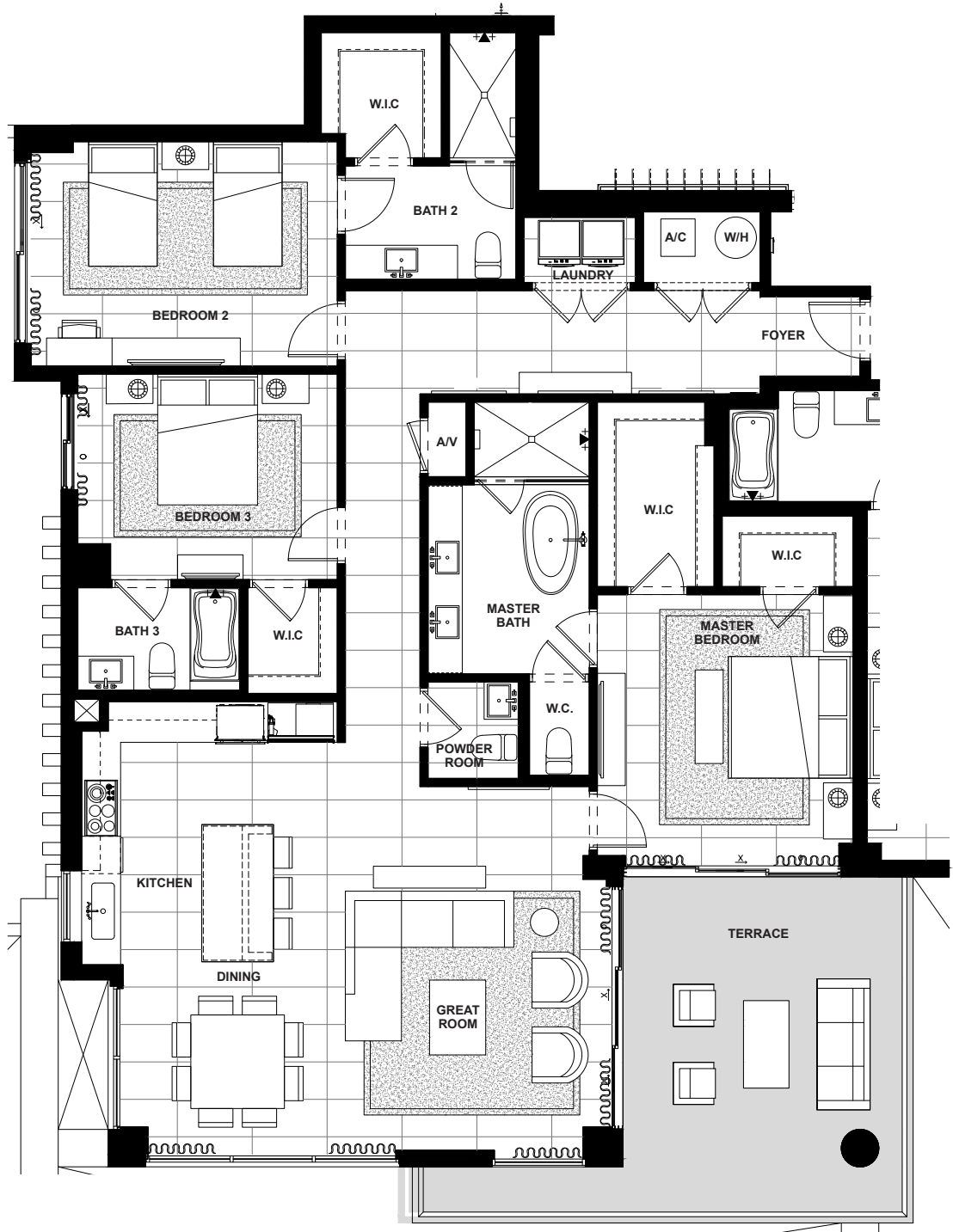
EAST DIRECTION	3 BEDROOMS	3.5 BATHS	2,132 A/C LIVING AREA	358 COVERED TERRACES	2,490 TOTAL S.F.
-------------------	---------------	--------------	-----------------------------	----------------------------	---------------------

Artist's conceptual illustration only. Subject to modification.

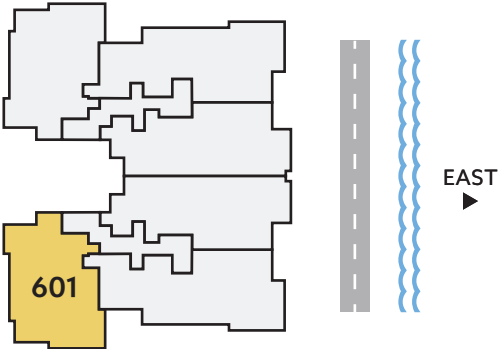
 ORAL REPRESENTATIONS CANNOT BE RELIED UPON AS CORRECTLY STATING REPRESENTATIONS OF THE SELLER. FOR CORRECT REPRESENTATIONS, MAKE REFERENCE TO THIS BROCHURE AND TO THE DOCUMENTS REQUIRED BY SECTION 718.503, FLORIDA STATUTES TO BE FURNISHED BY A SELLER TO A BUYER OR LESSEE.

All dimensions, features, and specifications are approximate and subject to change without notice. Square footage listed above represents marketing square footage (please refer to section 3.2 of the Declaration and Exhibit 5 for more information). Brokers warmly welcomed.

Residence 601




SIXTH FLOOR



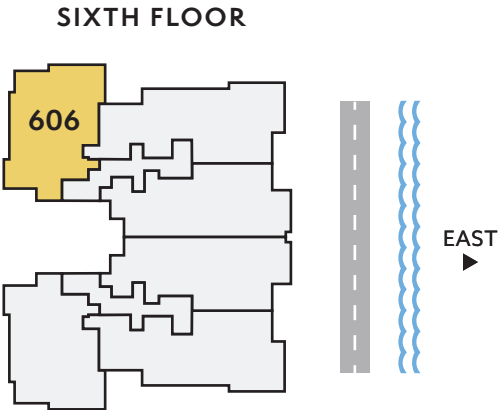
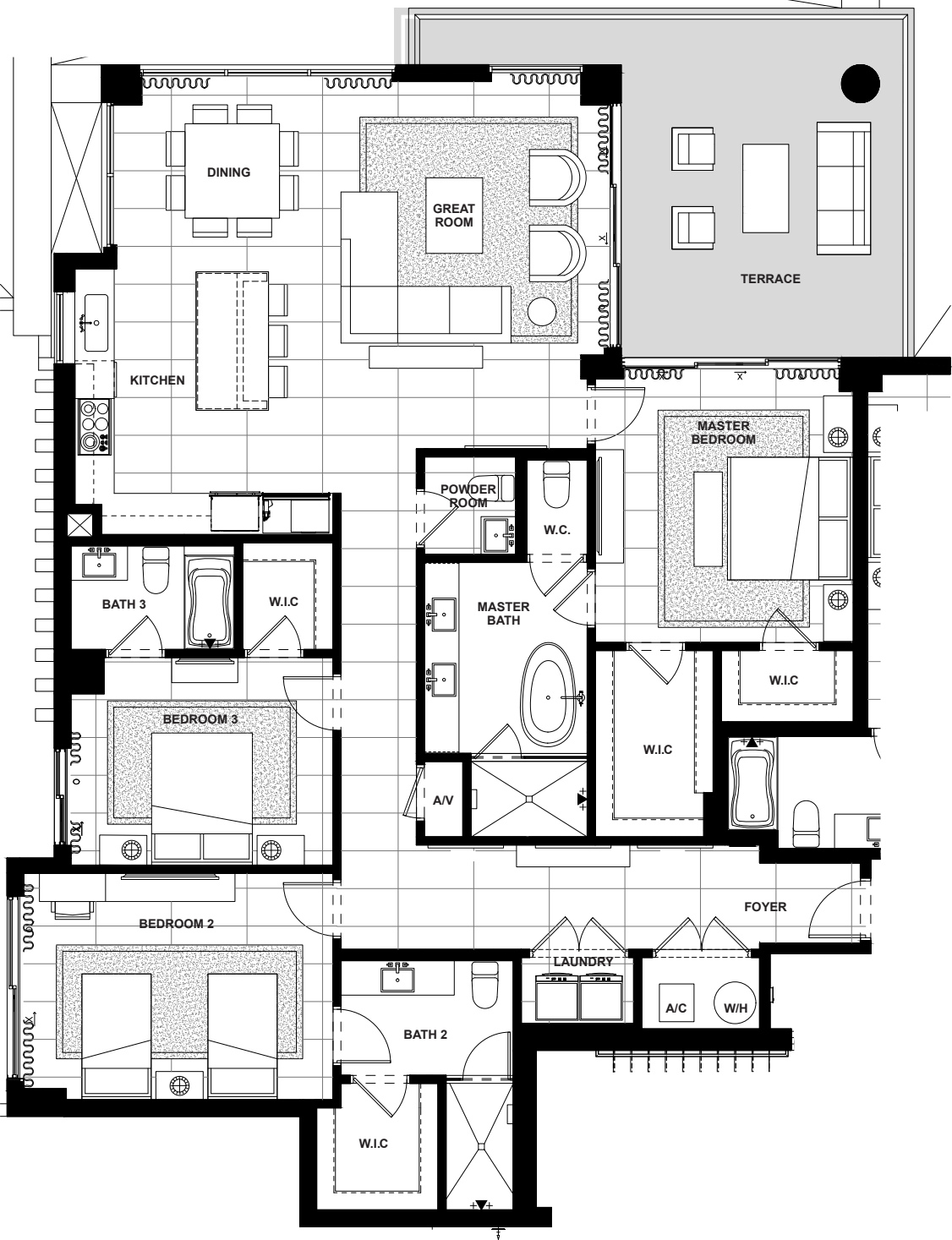
SOUTH/ WEST DIRECTION	3	3.5	2,106	320	2,426
	BEDROOMS	BATHS	A/C LIVING AREA	COVERED TERRACES	TOTAL S.F.

Artist's conceptual illustration only. Subject to modification.

 ORAL REPRESENTATIONS CANNOT BE RELIED UPON AS CORRECTLY STATING REPRESENTATIONS OF THE SELLER. FOR CORRECT REPRESENTATIONS, MAKE REFERENCE TO THIS BROCHURE AND TO THE DOCUMENTS REQUIRED BY SECTION 718.503, FLORIDA STATUTES TO BE FURNISHED BY A SELLER TO A BUYER OR LESSEE.


All dimensions, features, and specifications are approximate and subject to change without notice. Square footage listed above represents marketing square footage (please refer to section 3.2 of the Declaration and Exhibit 5 for more information). Brokers warmly welcomed.

Residence 606



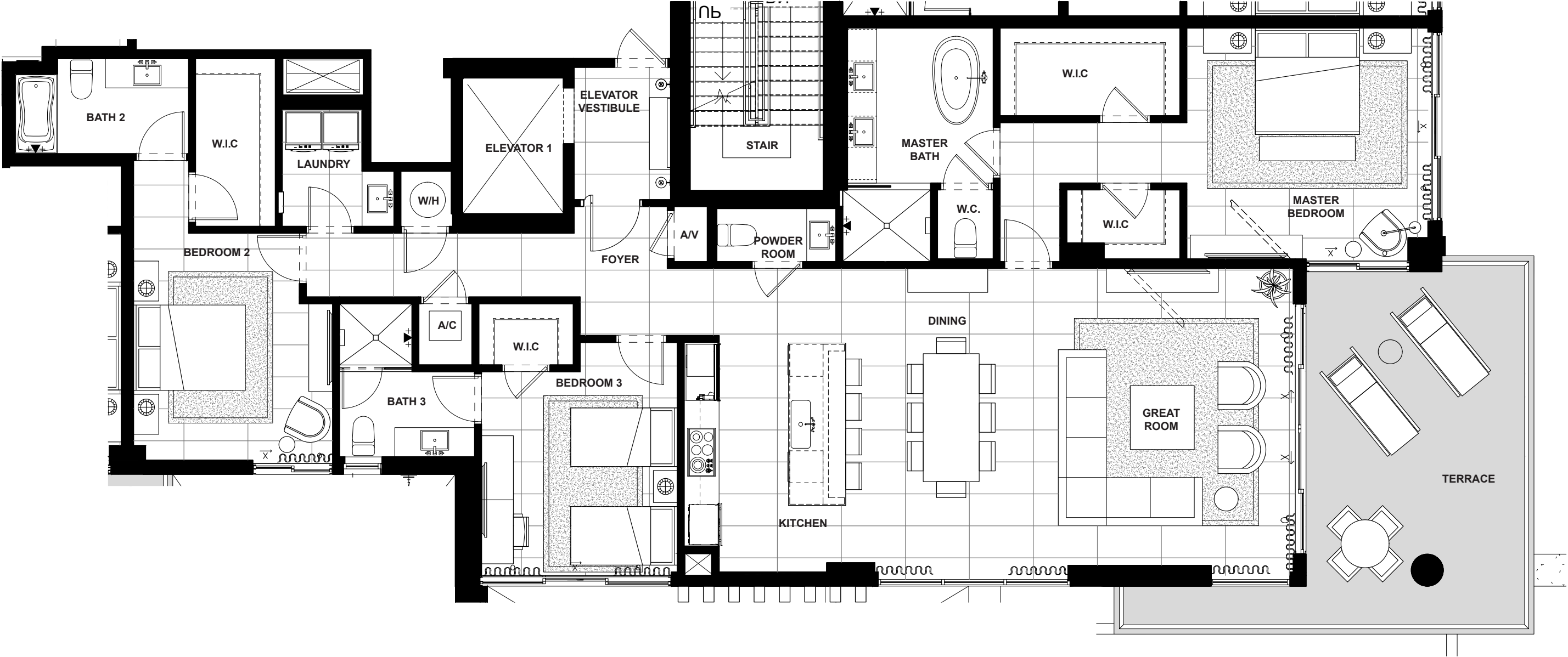
NORTH/ WEST DIRECTION	3 BEDROOMS	3.5 BATHS	2,106 A/C LIVING AREA	320 COVERED TERRACES	2,426 TOTAL S.F.
-----------------------------	---------------	--------------	-----------------------------	----------------------------	---------------------

Artist's conceptual illustration only. Subject to modification.

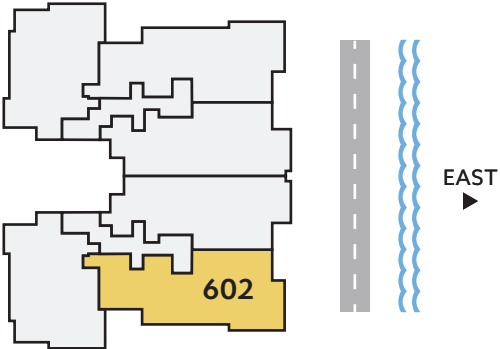
 ORAL REPRESENTATIONS CANNOT BE RELIED UPON AS CORRECTLY STATING REPRESENTATIONS OF THE SELLER. FOR CORRECT REPRESENTATIONS, MAKE REFERENCE TO THIS BROCHURE AND TO THE DOCUMENTS REQUIRED BY SECTION 718.503, FLORIDA STATUTES TO BE FURNISHED BY A SELLER TO A BUYER OR LESSEE.

All dimensions, features, and specifications are approximate and subject to change without notice. Square footage listed above represents marketing square footage (please refer to section 3.2 of the Declaration and Exhibit 5 for more information). Brokers warmly welcomed.

Residence 602




SIXTH FLOOR



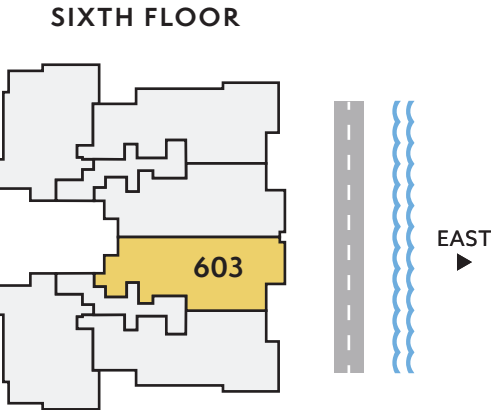
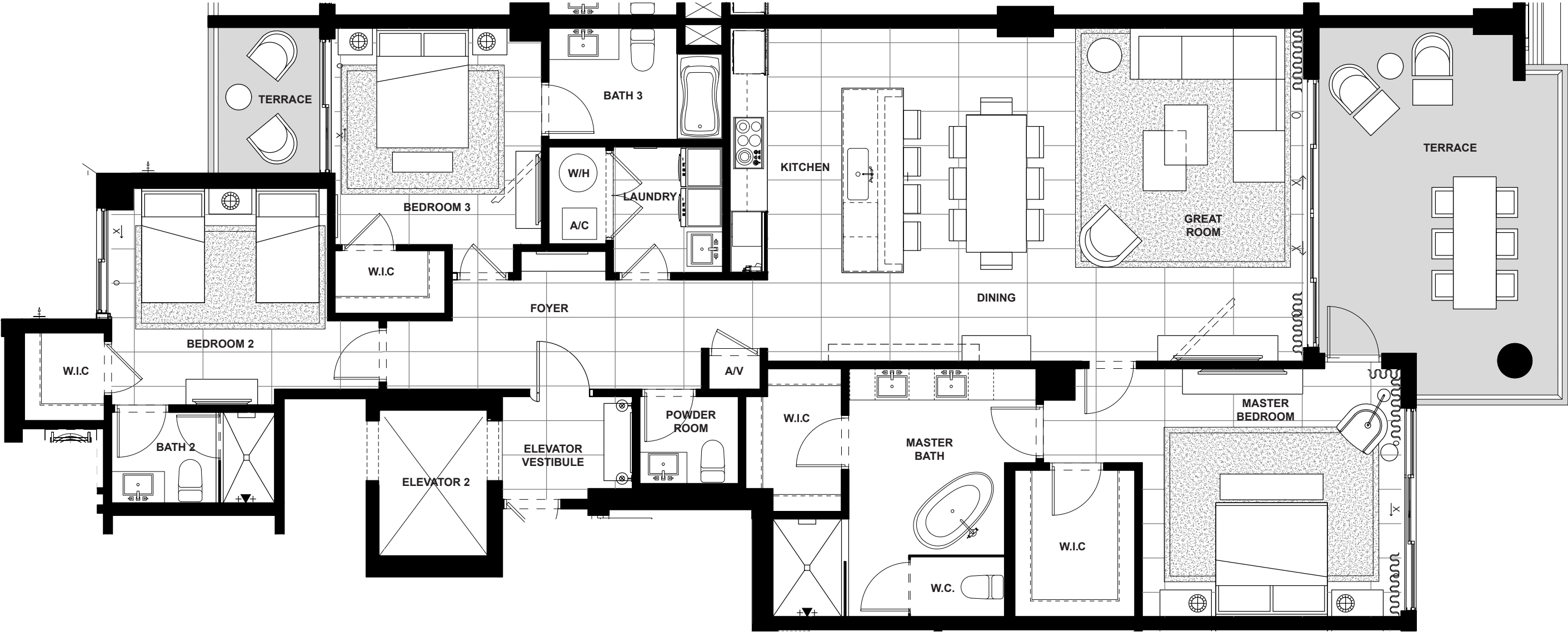
SOUTH/ EAST DIRECTION	3	3.5	2,308	365	2,673
	BEDROOMS	BATHS	A/C LIVING AREA	COVERED TERRACES	TOTAL S.F.

Artist's conceptual illustration only. Subject to modification.

 ORAL REPRESENTATIONS CANNOT BE RELIED UPON AS CORRECTLY STATING REPRESENTATIONS OF THE SELLER. FOR CORRECT REPRESENTATIONS, MAKE REFERENCE TO THIS BROCHURE AND TO THE DOCUMENTS REQUIRED BY SECTION 718.503, FLORIDA STATUTES TO BE FURNISHED BY A SELLER TO A BUYER OR LESSEE.


All dimensions, features, and specifications are approximate and subject to change without notice. Square footage listed above represents marketing square footage (please refer to section 3.2 of the Declaration and Exhibit 5 for more information). Brokers warmly welcomed.

Residence 603



EAST DIRECTION	3 BEDROOMS	3.5 BATHS	2,132 A/C LIVING AREA	358 COVERED TERRACES	2,490 TOTAL S.F.
-------------------	---------------	--------------	-----------------------------	----------------------------	---------------------

Artist's conceptual illustration only. Subject to modification.

 ORAL REPRESENTATIONS CANNOT BE RELIED UPON AS CORRECTLY STATING REPRESENTATIONS OF THE SELLER. FOR CORRECT REPRESENTATIONS, MAKE REFERENCE TO THIS BROCHURE AND TO THE DOCUMENTS REQUIRED BY SECTION 718.503, FLORIDA STATUTES TO BE FURNISHED BY A SELLER TO A BUYER OR LESSEE.

All dimensions, features, and specifications are approximate and subject to change without notice. Square footage listed above represents marketing square footage (please refer to section 3.2 of the Declaration and Exhibit 5 for more information). Brokers warmly welcomed.