



RESIDENCES
400 CENTRAL

RESIDENCE
505-1905

3 BEDROOM
3 BATH

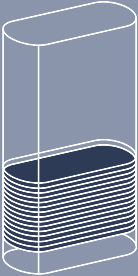
INTERIOR
1,732 SF

TERRACE
357 SF

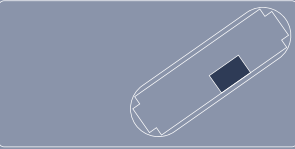
TOTAL
2,089 SF

▲
N

FLOORS
5-19

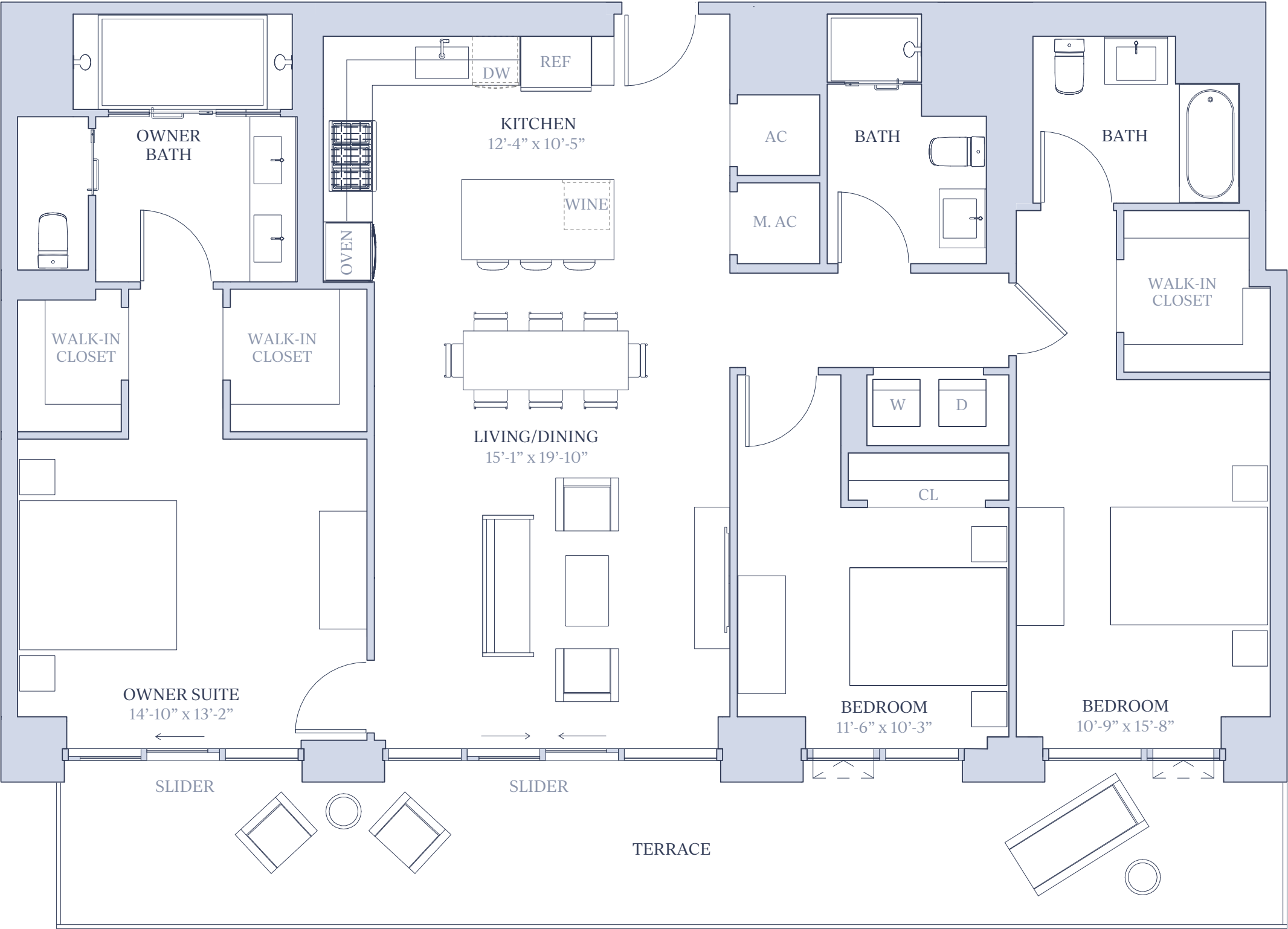


Central Avenue



4th Street North

1st Avenue South



SALES GALLERY LOCATED AT 465 CENTRAL AVENUE, ST. PETERSBURG, FL 33701 | 727-209-7848 | info@residences400central.com | residences400central.com

Stated square footages and dimensions are measured to the exterior boundaries of the exterior walls and the centerline of interior demising walls and in fact vary from the square footage and dimensions that would be determined by using the description and definition of the “Unit” set forth in the Declaration (which generally only includes the interior airspace between the perimeter walls and excludes all interior structural components and other common elements). This method is generally used in sales materials and is provided to allow a prospective buyer to compare the Units with units in other condominium projects that utilize the same method. For your reference, the area of the Unit determined in accordance with the unit boundaries as defined in the Declaration is disclosed in the Declaration. Measurements of rooms set forth on this floor plan are generally taken at the farthest points of each given room (as if the room were a perfect rectangle), without regard for any cutouts or variations. Accordingly, the area of the actual room will typically be smaller than the product obtained by multiplying the stated length and width. All dimensions are approximations and estimates which will vary with actual construction and may vary based on the location of the Unit in the building and the amount of shear wall tapering applicable to the Unit, and all floor plans, specifications and other development plans are subject to change and will not necessarily accurately reflect the final plans and specifications for the development. All depictions of appliances, wine cooler(s), counters, soffits, floor coverings and other matters of detail, including, without limitation, items of finish and decoration, are conceptual only and are not necessarily included in each Unit.

LUXURY LIVING IN THE SKY

The Residences at 400 Central encompasses a luxurious collection of one to four-bedroom condominium residences and a selection of custom penthouse homes. The open-concept floor plans highlight energy-efficient living by way of progressive design and planning. Spacious interiors are illuminated by floor-to-ceiling windows and large sliding glass doors that lead to wrap-around terraces – allowing for ultimate enjoyment of breathtaking views and the Florida sunshine.



 RED APPLE GROUP  Michael Saunders & Company
LICENSED REAL ESTATE BROKER  *ARQUITECTONICA*  CELANO
design studio  clear **ph**

 **EQUAL HOUSING OPPORTUNITY**

ORAL REPRESENTATIONS CANNOT BE RELIED UPON AS CORRECTLY STATING THE REPRESENTATIONS OF THE DEVELOPER. FOR CORRECT REPRESENTATIONS, MAKE REFERENCE TO THIS BROCHURE AND TO THE DOCUMENTS REQUIRED BY SECTION 718.503, FLORIDA STATUTES, TO BE FURNISHED BY A DEVELOPER TO A BUYER OR LESSEE


This offering is made only by the Prospectus for the Condominium and no statement should be relied upon if not made in the Prospectus. This is not intended to be an offer to sell nor a solicitation of offers to buy in any jurisdiction where prohibited by law, and your eligibility for purchase will depend upon your state of residency.

The images contained in this brochure are conceptual only and are for the convenience of reference. They should not be relied upon as representations, express or implied, of the final detail of the items included in the Condominium. This condominium development project is being developed by CATS RED APPLE ST. PETE, LLC, a Delaware limited liability company ("Developer"). The offering is made only by the Developer's Prospectus for the Condominium and no statement should be relied upon if not made in the Developer's Prospectus. This is not an offering to residents of New York or of any other jurisdiction prohibited by law. Red Apple Group is not the Developer. Reproduction for private or commercial use is not authorized.

All rights reserved. Artist's renderings, dimensions, specifications, prices, availability, and features are approximate and subject to change at any time without notice.

RESIDENCE
505-1905

RESIDENCES 400 CENTRAL



RESIDENCES
400 CENTRAL

RESIDENCE
503-603, 803-1903

2 BEDROOM
2.5 BATH

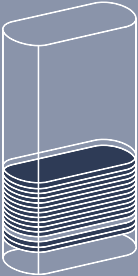
INTERIOR
1,358 SF

TERRACE
288 SF

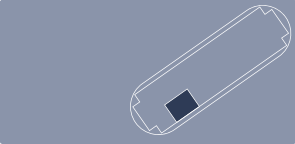
TOTAL
1,646 SF

▲
N

FLOORS
5-6,
8-19



Central Avenue



4th Street North

1st Avenue South

SALES GALLERY LOCATED AT 465 CENTRAL AVENUE, ST. PETERSBURG, FL 33701 | 727-209-7848 | info@residences400central.com | residences400central.com

Stated square footages and dimensions are measured to the exterior boundaries of the exterior walls and the centerline of interior demising walls and in fact vary from the square footage and dimensions that would be determined by using the description and definition of the “Unit” set forth in the Declaration (which generally only includes the interior airspace between the perimeter walls and excludes all interior structural components and other common elements). This method is generally used in sales materials and is provided to allow a prospective buyer to compare the Units with units in other condominium projects that utilize the same method. For your reference, the area of the Unit determined in accordance with the unit boundaries as defined in the Declaration is disclosed in the Declaration. Measurements of rooms set forth on this floor plan are generally taken at the farthest points of each given room (as if the room were a perfect rectangle), without regard for any cutouts or variations. Accordingly, the area of the actual room will typically be smaller than the product obtained by multiplying the stated length and width. All dimensions are approximations and estimates which will vary with actual construction and may vary based on the location of the Unit in the building and the amount of shear wall tapering applicable to the Unit, and all floor plans, specifications and other development plans are subject to change and will not necessarily accurately reflect the final plans and specifications for the development. All depictions of appliances, wine cooler(s), counters, soffits, floor coverings and other matters of detail, including, without limitation, items of finish and decoration, are conceptual only and are not necessarily included in each Unit.



RESIDENCES
400 CENTRAL

RESIDENCE
708

2 BEDROOM
2.5 BATH

INTERIOR

1,344 SF

TERRACE

1,834 SF

TOTAL

3,182 SF



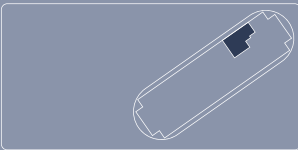
N

FLOOR

7

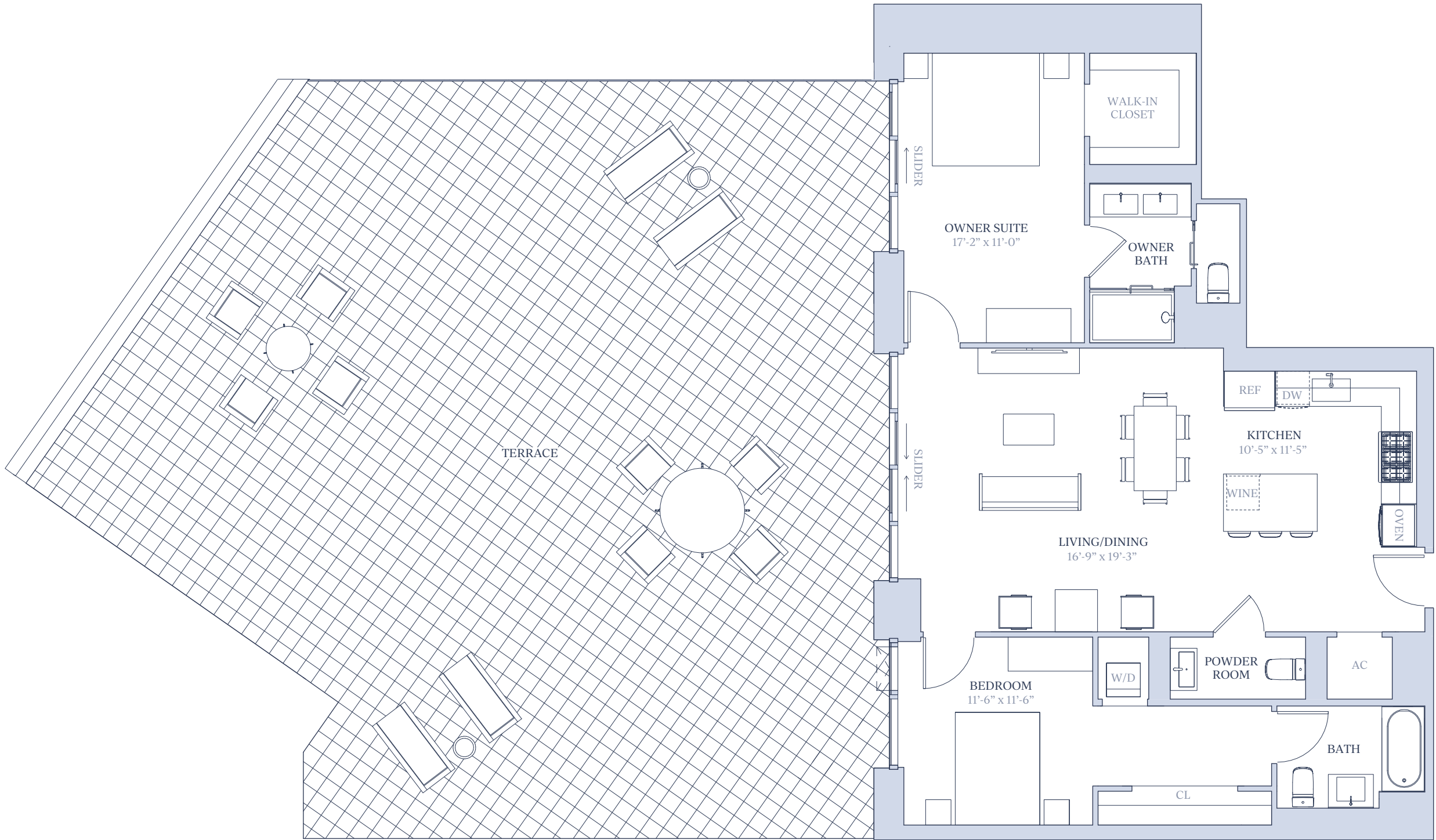


Central Avenue




4th Street North

1st Avenue South



SALES GALLERY LOCATED AT 465 CENTRAL AVENUE, ST. PETERSBURG, FL 33701 | 727-209-7848 | info@residences400central.com | residences400central.com

Stated square footages and dimensions are measured to the exterior boundaries of the exterior walls and the centerline of interior demising walls and in fact vary from the square footage and dimensions that would be determined by using the description and definition of the "Unit" set forth in the Declaration (which generally only includes the interior airspace between the perimeter walls and excludes all interior structural components and other common elements). This method is generally used in sales materials and is provided to allow a prospective buyer to compare the Units with units in other condominium projects that utilize the same method. For your reference, the area of the Unit determined in accordance with the unit boundaries as defined in the Declaration is disclosed in the Declaration. Measurements of rooms set forth on this floor plan are generally taken at the farthest points of each given room (as if the room were a perfect rectangle), without regard for any cutouts or variations. Accordingly, the area of the actual room will typically be smaller than the product obtained by multiplying the stated length and width. All dimensions are approximations and estimates which will vary with actual construction and may vary based on the location of the Unit in the building and the amount of shear wall tapering applicable to the Unit, and all floor plans, specifications and other development plans are subject to change and will not necessarily accurately reflect the final plans and specifications for the development. All depictions of appliances, wine cooler(s), counters, soffits, floor coverings and other matters of detail, including, without limitation, items of finish and decoration, are conceptual only and are not necessarily included in each Unit.



RESIDENCES
400 CENTRAL

RESIDENCE
802-3902

3 BEDROOM
2.5 BATH

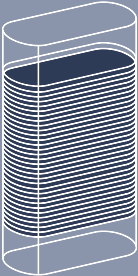
INTERIOR
1,762 SF

TERRACE
529 SF

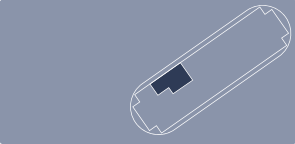
TOTAL
2,291 SF

▲
N

FLOORS
8-39

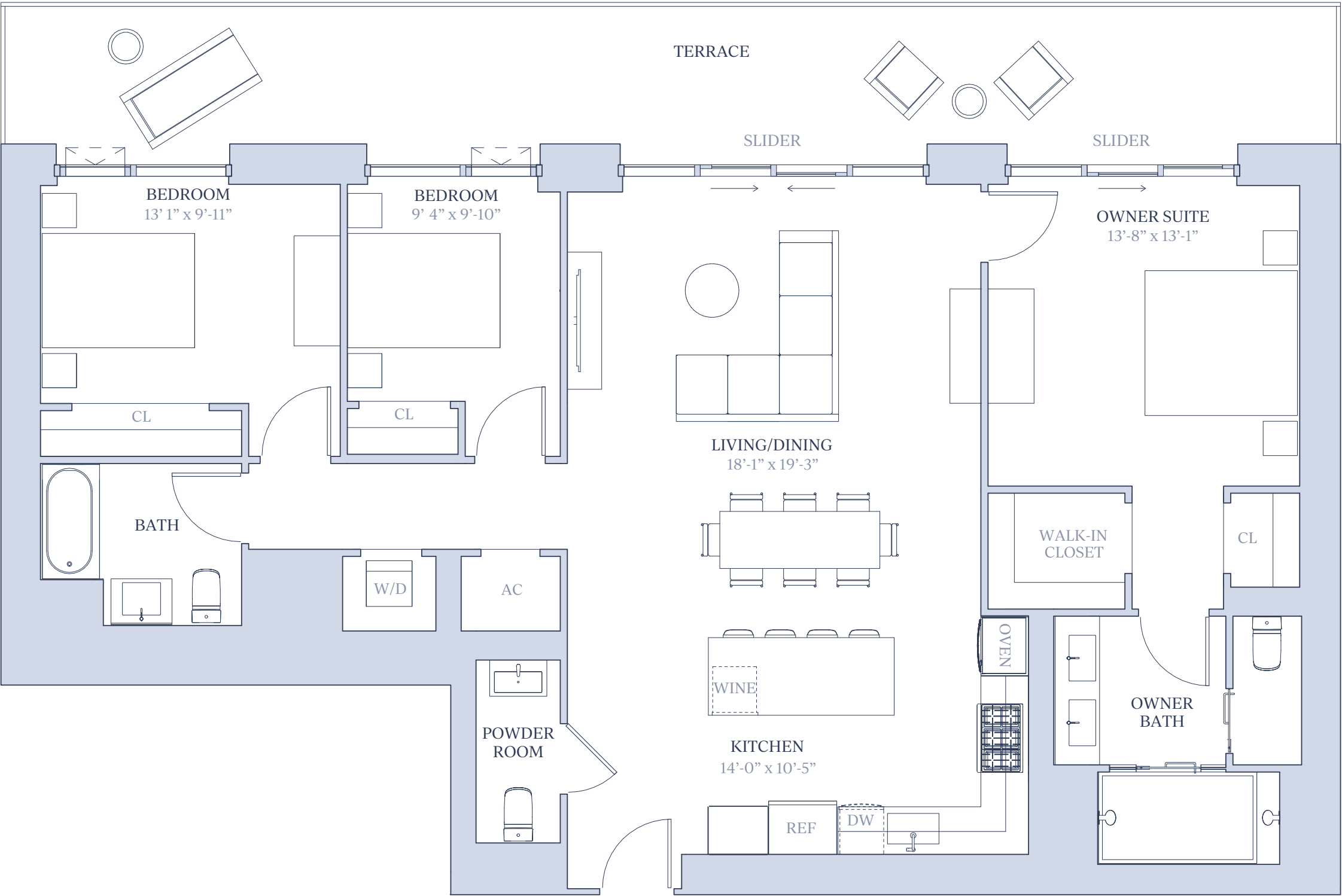


Central Avenue



4th Street North

1st Avenue South



SALES GALLERY LOCATED AT 465 CENTRAL AVENUE, ST. PETERSBURG, FL 33701 | 727-209-7848 | info@residences400central.com | residences400central.com

Stated square footages and dimensions are measured to the exterior boundaries of the exterior walls and the centerline of interior demising walls and in fact vary from the square footage and dimensions that would be determined by using the description and definition of the “Unit” set forth in the Declaration (which generally only includes the interior airspace between the perimeter walls and excludes all interior structural components and other common elements). This method is generally used in sales materials and is provided to allow a prospective buyer to compare the Units with units in other condominium projects that utilize the same method. For your reference, the area of the Unit determined in accordance with the unit boundaries as defined in the Declaration is disclosed in the Declaration. Measurements of rooms set forth on this floor plan are generally taken at the farthest points of each given room (as if the room were a perfect rectangle), without regard for any cutouts or variations. Accordingly, the area of the actual room will typically be smaller than the product obtained by multiplying the stated length and width. All dimensions are approximations and estimates which will vary with actual construction and may vary based on the location of the Unit in the building and the amount of shear wall tapering applicable to the Unit, and all floor plans, specifications and other development plans are subject to change and will not necessarily accurately reflect the final plans and specifications for the development. All depictions of appliances, wine cooler(s), counters, soffits, floor coverings and other matters of detail, including, without limitation, items of finish and decoration, are conceptual only and are not necessarily included in each Unit.

RESIDENCES

400 CENTRAL

SKY COLLECTION

PENTHOUSE

ONE

PH 4001-PH 4301

4 BEDROOM

3.5 BATH

INTERIOR

4,849 SF

TERRACE

1,522 SF

TOTAL

6,371 SF

N

FLOORS

40-43

Central Avenue

4th Street North


1st Avenue South

Room Dimensions:

- Living/Great Room: 42'-8" x 18'-9"
- Dining: 23'-0" x 15'-9"
- Kitchen: 16'-2" x 10'-0"
- Family Room: 18'-2" x 20'-6"
- Bedroom 1: 12'-11" x 13'-6"
- Bedroom 2: 13'-9" x 10'-2"
- Bedroom 3: 13'-3" x 14'-8"
- Owner Suite: 24'-5" x 19'-2"
- Owner Walk-In Closet: 36'-2" x 10'-7"

SALES GALLERY LOCATED AT 465 CENTRAL AVENUE, ST. PETERSBURG, FL 33701 | 727-209-7848 | info@residences400central.com | residences400central.com

Stated square footages and dimensions are measured to the exterior boundaries of the exterior walls and the centerline of interior demising walls and in fact vary from the square footage and dimensions that would be determined by using the description and definition of the “Unit” set forth in the Declaration (which generally only includes the interior airspace between the perimeter walls and excludes all interior structural components and other common elements). This method is generally used in sales materials and is provided to allow a prospective buyer to compare the Units with units in other condominium projects that utilize the same method. For your reference, the area of the Unit determined in accordance with the unit boundaries as defined in the Declaration is disclosed in the Declaration. Measurements of rooms set forth on this floor plan are generally taken at the farthest points of each given room (as if the room were a perfect rectangle), without regard for any cutouts or variations. Accordingly, the area of the actual room will typically be smaller than the product obtained by multiplying the stated length and width. All dimensions are approximations and estimates which will vary with actual construction and may vary based on the location of the Unit in the building and the amount of shear wall tapering applicable to the Unit, and all floor plans, specifications and other development plans are subject to change and will not necessarily accurately reflect the final plans and specifications for the development. All depictions of appliances, wine cooler(s), counters, soffits, floor coverings and other matters of detail, including, without limitation, items of finish and decoration, are conceptual only and are not necessarily included in each Unit.



RESIDENCES
400 CENTRAL
SKY COLLECTION

PENTHOUSE
FOUR
PH 4004-PH 4304

3 BEDROOM
3 BATH

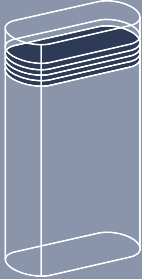
INTERIOR
2,385 SF

TERRACE
653 SF

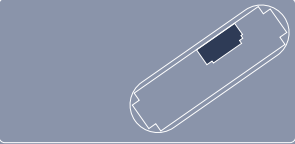
TOTAL
3,038 SF

▲
N

FLOORS
40-43



Central Avenue



4th Street North
1st Avenue South

TERRACE

SLIDER

SLIDER

BEDROOM 12'-10" x 13'-8"

BEDROOM 14'-3" x 11'-6"

LIVING/DINING 25'-3" x 17'-5"

OWNER SUITE 19'-1" x 12'-0"

WALK-IN CLOSET

BATH

CL

CL

WINE

KITCHEN 17'-0" x 12'-10"

LAUNDRY

AC

OWNER BATH

WALK-IN CLOSET 10'-4" x 8'-4"

M. AC

SALES GALLERY LOCATED AT 465 CENTRAL AVENUE, ST. PETERSBURG, FL 33701 | 727-209-7848 | info@residences400central.com | residences400central.com

Stated square footages and dimensions are measured to the exterior boundaries of the exterior walls and the centerline of interior demising walls and in fact vary from the square footage and dimensions that would be determined by using the description and definition of the “Unit” set forth in the Declaration (which generally only includes the interior airspace between the perimeter walls and excludes all interior structural components and other common elements). This method is generally used in sales materials and is provided to allow a prospective buyer to compare the Units with units in other condominium projects that utilize the same method. For your reference, the area of the Unit determined in accordance with the unit boundaries as defined in the Declaration is disclosed in the Declaration. Measurements of rooms set forth on this floor plan are generally taken at the farthest points of each given room (as if the room were a perfect rectangle), without regard for any cutouts or variations. Accordingly, the area of the actual room will typically be smaller than the product obtained by multiplying the stated length and width. All dimensions are approximations and estimates which will vary with actual construction and may vary based on the location of the Unit in the building and the amount of shear wall tapering applicable to the Unit, and all floor plans, specifications and other development plans are subject to change and will not necessarily accurately reflect the final plans and specifications for the development. All depictions of appliances, wine cooler(s), counters, soffits, floor coverings and other matters of detail, including, without limitation, items of finish and decoration, are conceptual only and are not necessarily included in each Unit.