

SKY

RESIDENCE

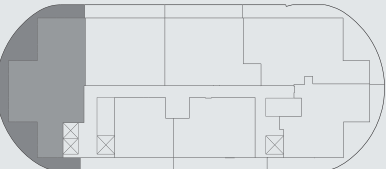
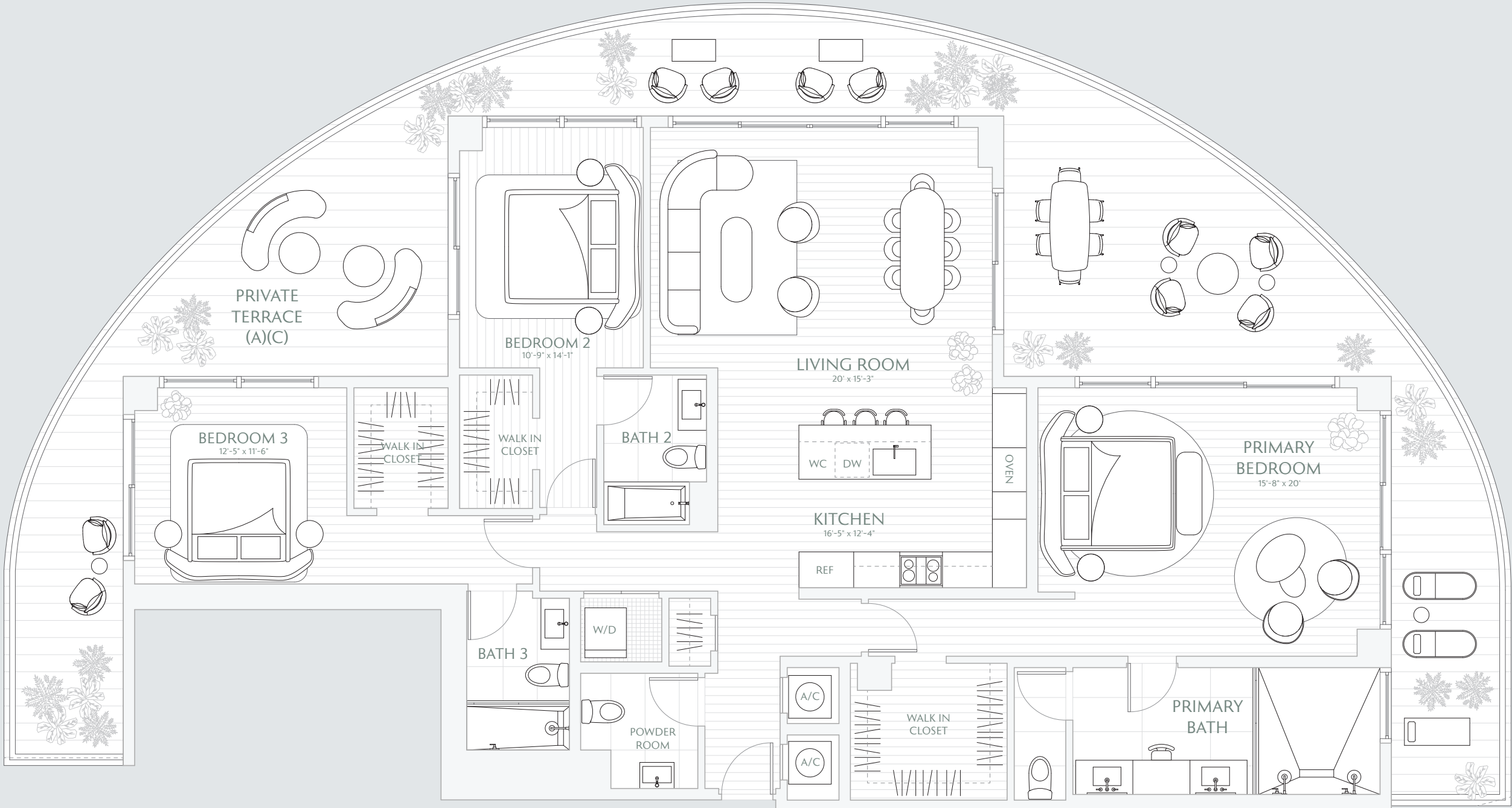
01

FLOORS 24 - 30

3 BEDROOMS  
3.5 BATHS  
PRIVATE TERRACE

INTERIOR 2,080 SF / 193.2 M<sup>2</sup>  
EXTERIOR 1,046 SF / 97.1 M<sup>2</sup>  
TOTAL 3,126 SF / 290.4 M<sup>2</sup>

TERRACE A: 1,046 SF / 97.1 M<sup>2</sup>  
TERRACE B: 1,044 SF / 96.9 M<sup>2</sup>  
TERRACE C: 1,047 SF / 97.2 M<sup>2</sup>



Atlantic Ocean



Stated interior square footage is measured to the exterior face of exterior walls and to the centerline of interior demising walls or to the exterior face of walls adjoining corridors or other common elements or shared facilities without excluding areas that may be occupied by columns or other structural components. This method of measurement varies from, and is larger than, the dimensions that would be determined by using the description and the definition of the Unit set forth in the Declaration (which generally only includes the interior airspace between the perimeter walls and excludes structural components). For reference, the area of the unit, determined in accordance with the unit boundaries set forth in the Declaration is set forth in Exhibit "3" to the Declaration. All dimensions are approximate and may vary with actual construction. Note that measurements of rooms set forth on this floor plan are generally taken at the greatest points of each given room (as if the room were a perfect rectangle), without regard for any cutouts or irregularities. Accordingly, the area of the actual room will typically be smaller than the product obtained by multiplying the stated length times width. All floor plans and development plans are subject to change. The Developer expressly reserves the right to make modifications, revisions, and changes it deems desirable in its sole and absolute discretion. All depictions of furnishings, appliances, built-ins, counters, soffits, floor coverings, lighting, landscaping and other matters of detail, including, without limitation, items of finish and decoration, are conceptual only and are not necessarily included in each Unit. Consult your prospectus and Purchase Agreement.

SKY

RESIDENCE

02

FLOORS 24 - 30

2 BEDROOMS

2.5 BATHS

PRIVATE TERRACES

INTERIOR 1,524 SF / 141.5 M<sup>2</sup>

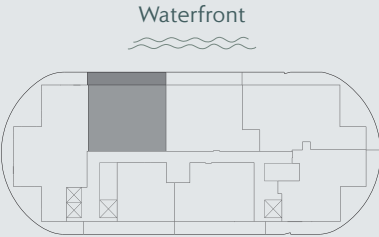
EXTERIOR 300 SF / 27.8 M<sup>2</sup>

TOTAL 1,824 SF / 169.4 M<sup>2</sup>

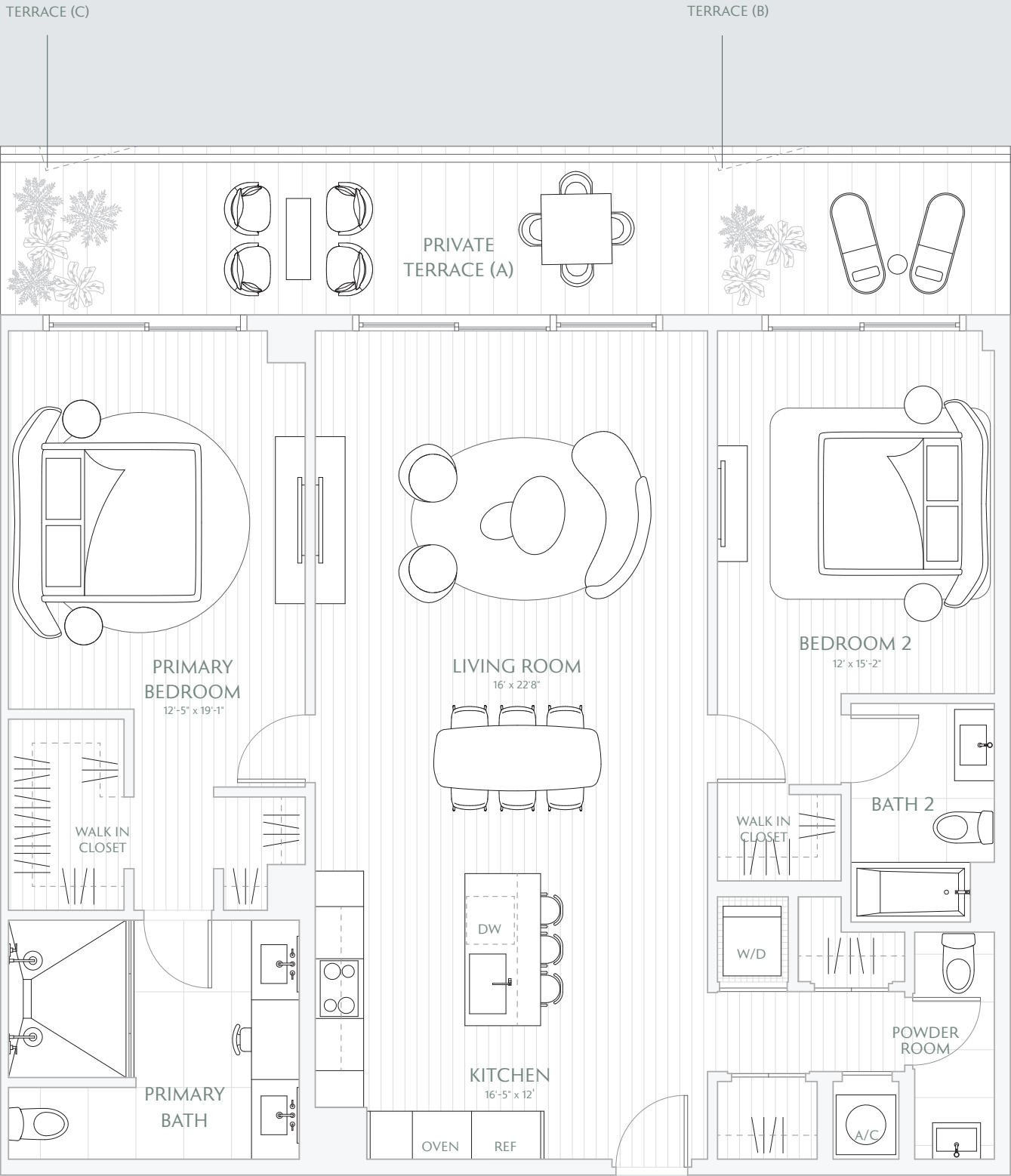
TERRACE A: 300 SF / 27.8 M<sup>2</sup>


TERRACE B: 295 SF / 27.4 M<sup>2</sup>

TERRACE C: 295 SF / 27.4 M<sup>2</sup>



Atlantic Ocean



 Stated interior square footage is measured to the exterior face of exterior walls and to the centerline of interior demising walls or to the exterior face of walls adjoining corridors or other common elements or shared facilities without excluding areas that may be occupied by columns or other structural components. This method of measurement varies from, and is larger than, the dimensions that would be determined by using the description and the definition of the Unit set forth in the Declaration (which generally only includes the interior airspace between the perimeter walls and excludes structural components). For reference, the area of the unit, determined in accordance with the unit boundaries set forth in the Declaration is set forth in Exhibit "3" to the Declaration. All dimensions are approximate and may vary with actual construction. Note that measurements of rooms set forth on this floor plan are generally taken at the greatest points of each given room (as if the room were a perfect rectangle), without regard for any cutouts or irregularities. Accordingly, the area of the actual room will typically be smaller than the product obtained by multiplying the stated length times width. All floor plans and development plans are subject to change. The Developer expressly reserves the right to make modifications, revisions, and changes it deems desirable in its sole and absolute discretion. All depictions of furnishings, appliances, built-ins, counters, soffits, floor coverings, lighting, landscaping and other matters of detail, including, without limitation, items of finish and decoration, are conceptual only and are not necessarily included in each Unit. Consult your prospectus and Purchase Agreement.

SKY

RESIDENCE

03

FLOORS 24 - 30

- 2 BEDROOMS
- DEN
- 2.5 BATHS
- PRIVATE TERRACE

INTERIOR 1,600 SF / 148.6 M<sup>2</sup>

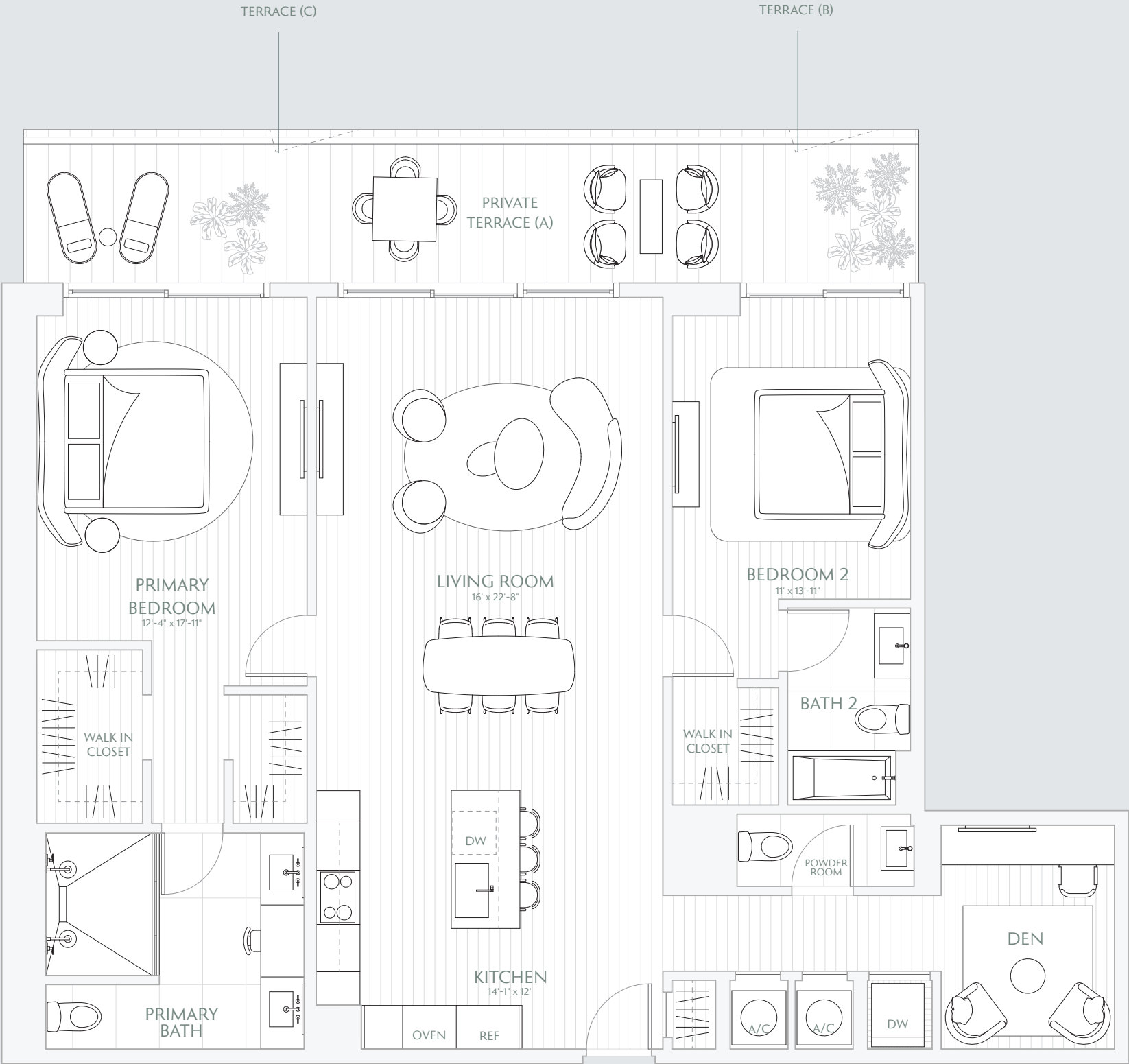
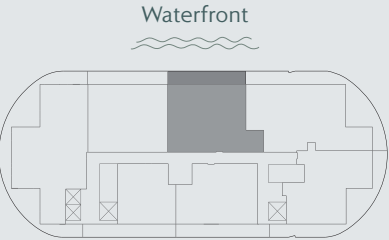
EXTERIOR 298 SF / 27.6 M<sup>2</sup>


TOTAL 1,898 SF / 176.3 M<sup>2</sup>

TERRACE A: 298 SF / 27.6 M<sup>2</sup>

TERRACE B: 286 SF / 26.5 M<sup>2</sup>

TERRACE C: 286 SF / 26.5 M<sup>2</sup>



 Stated interior square footage is measured to the exterior face of exterior walls and to the centerline of interior demising walls or to the exterior face of walls adjoining corridors or other common elements or shared facilities without excluding areas that may be occupied by columns or other structural components. This method of measurement varies from, and is larger than, the dimensions that would be determined by using the description and the definition of the Unit set forth in the Declaration (which generally only includes the interior airspace between the perimeter walls and excludes structural components). For reference, the area of the unit, determined in accordance with the unit boundaries set forth in the Declaration is set forth in Exhibit "3" to the Declaration. All dimensions are approximate and may vary with actual construction. Note that measurements of rooms set forth on this floor plan are generally taken at the greatest points of each given room (as if the room were a perfect rectangle), without regard for any cutouts or irregularities. Accordingly, the area of the actual room will typically be smaller than the product obtained by multiplying the stated length times width. All floor plans and development plans are subject to change. The Developer expressly reserves the right to make modifications, revisions, and changes it deems desirable in its sole and absolute discretion. All depictions of furnishings, appliances, built-ins, counters, soffits, floor coverings, lighting, landscaping and other matters of detail, including, without limitation, items of finish and decoration, are conceptual only and are not necessarily included in each Unit. Consult your prospectus and Purchase Agreement.

SKY

RESIDENCE

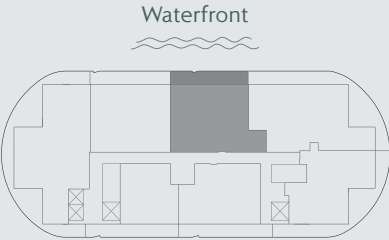
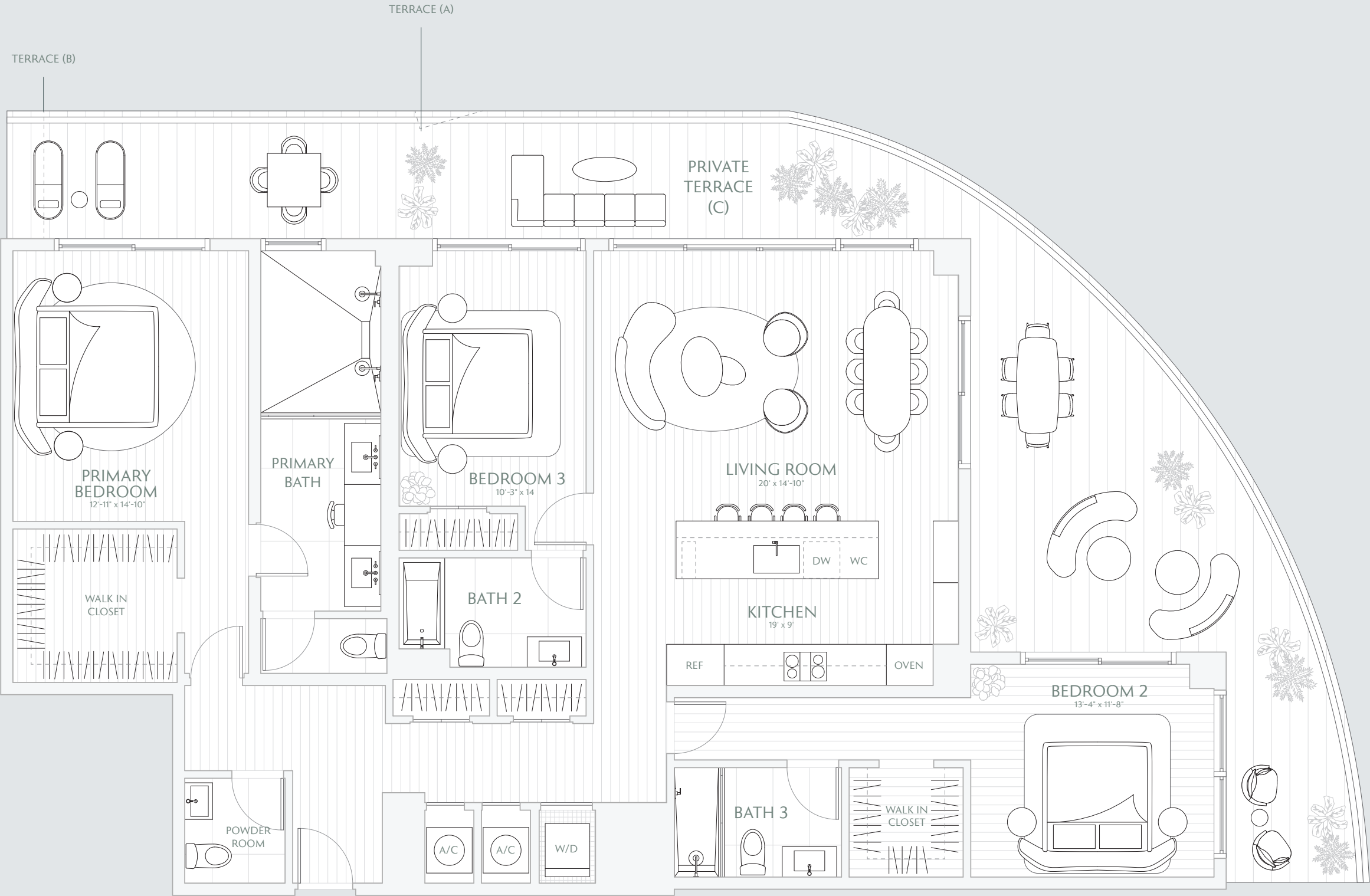
04


FLOORS 24 - 30

3 BEDROOMS  
3.5 BATHS  
PRIVATE TERRACE

INTERIOR 1,958 SF / 181.9 M<sup>2</sup>  
EXTERIOR 755 SF / 70.1 M<sup>2</sup>  
TOTAL 2,713 SF / 252 M<sup>2</sup>

TERRACE A: 755 SF / 70.1 M<sup>2</sup>  
TERRACE B: 743 SF / 69 M<sup>2</sup>  
TERRACE C: 758 SF / 70.4 M<sup>2</sup>



 Stated interior square footage is measured to the exterior face of exterior walls and to the centerline of interior demising walls or to the exterior face of walls adjoining corridors or other common elements or shared facilities without excluding areas that may be occupied by columns or other structural components. This method of measurement varies from, and is larger than, the dimensions that would be determined by using the description and the definition of the Unit set forth in the Declaration (which generally only includes the interior airspace between the perimeter walls and excludes structural components). For reference, the area of the unit, determined in accordance with the unit boundaries set forth in the Declaration is set forth in Exhibit "3" to the Declaration. All dimensions are approximate and may vary with actual construction. Note that measurements of rooms set forth on this floor plan are generally taken at the greatest points of each given room (as if the room were a perfect rectangle), without regard for any cutouts or irregularities. Accordingly, the area of the actual room will typically be smaller than the product obtained by multiplying the stated length times width. All floor plans and development plans are subject to change. The Developer expressly reserves the right to make modifications, revisions, and changes it deems desirable in its sole and absolute discretion. All depictions of furnishings, appliances, built-ins, counters, soffits, floor coverings, lighting, landscaping and other matters of detail, including, without limitation, items of finish and decoration, are conceptual only and are not necessarily included in each Unit. Consult your prospectus and Purchase Agreement.

SKY

RESIDENCE

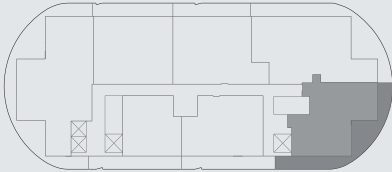
05

FLOORS 24 - 30

2 BEDROOMS  
2.5 BATHS  
PRIVATE TERRACE

INTERIOR 1,370 SF / 127.2 M<sup>2</sup>  
EXTERIOR 647 SF / 60.1 M<sup>2</sup>  
TOTAL 2,017 SF / 187.3 M<sup>2</sup>


TERRACE A: 647 SF / 60.1 M<sup>2</sup>  
TERRACE B: 647 SF / 60.1 M<sup>2</sup>  
TERRACE C: 649 SF / 60.2 M<sup>2</sup>

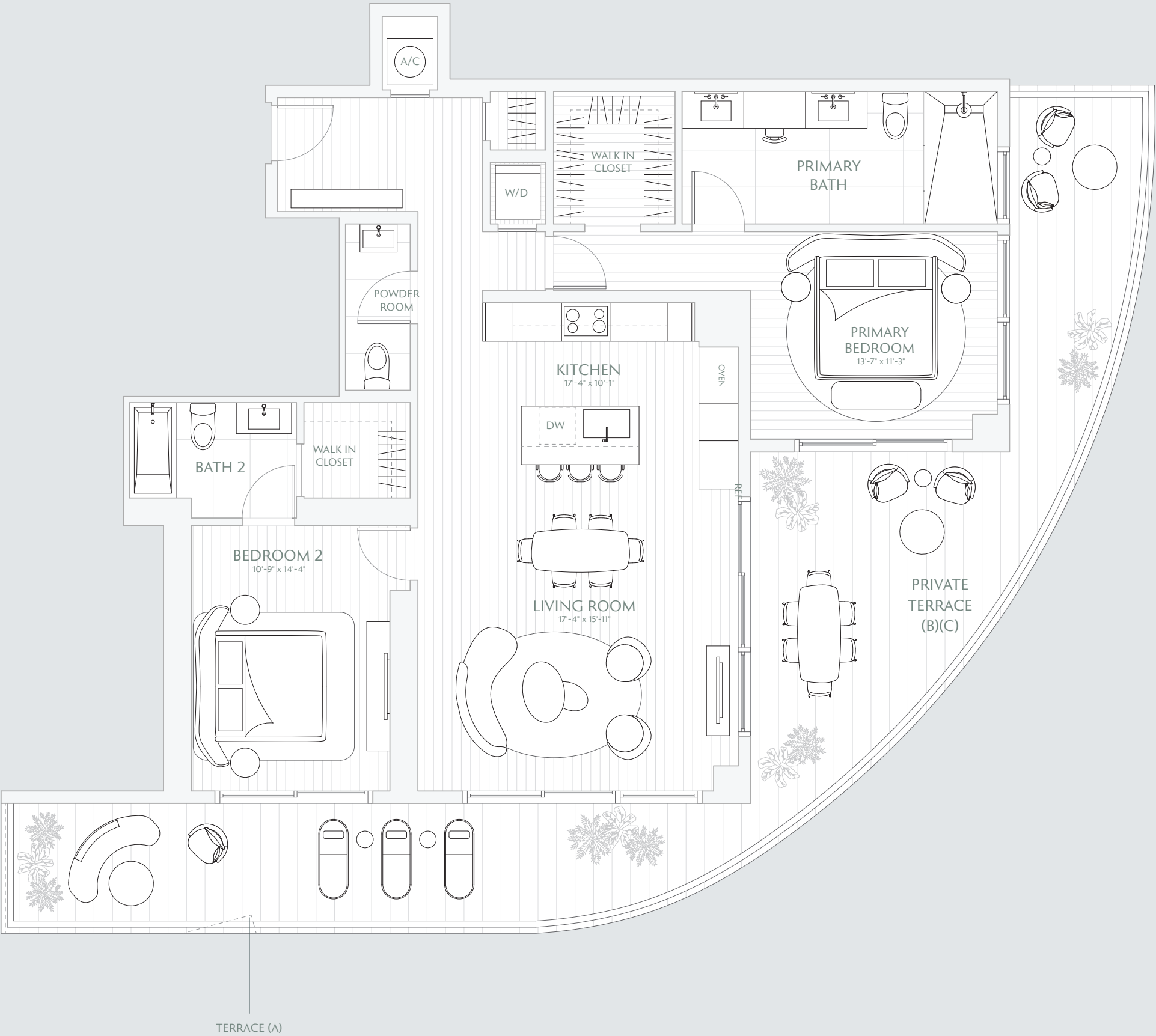


Downtown Skyline  
& Water



Atlantic  
Ocean

 Stated interior square footage is measured to the exterior face of exterior walls and to the centerline of interior demising walls or to the exterior face of walls adjoining corridors or other common elements or shared facilities without excluding areas that may be occupied by columns or other structural components. This method of measurement varies from, and is larger than, the dimensions that would be determined by using the description and the definition of the Unit set forth in the Declaration (which generally only includes the interior airspace between the perimeter walls and excludes structural components). For reference, the area of the unit, determined in accordance with the unit boundaries set forth in the Declaration is set forth in Exhibit "3" to the Declaration. All dimensions are approximate and may vary with actual construction. Note that measurements of rooms set forth on this floor plan are generally taken at the greatest points of each given room (as if the room were a perfect rectangle), without regard for any cutouts or irregularities. Accordingly, the area of the actual room will typically be smaller than the product obtained by multiplying the stated length times width. All floor plans and development plans are subject to change. The Developer expressly reserves the right to make modifications, revisions, and changes it deems desirable in its sole and absolute discretion. All depictions of furnishings, appliances, built-ins, counters, soffits, floor coverings, lighting, landscaping and other matters of detail, including, without limitation, items of finish and decoration, are conceptual only and are not necessarily included in each Unit. Consult your prospectus and Purchase Agreement.



SKY

RESIDENCE

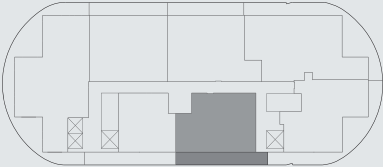
06

FLOORS 24 - 30

2 BEDROOMS  
2.5 BATHS  
PRIVATE TERRACE

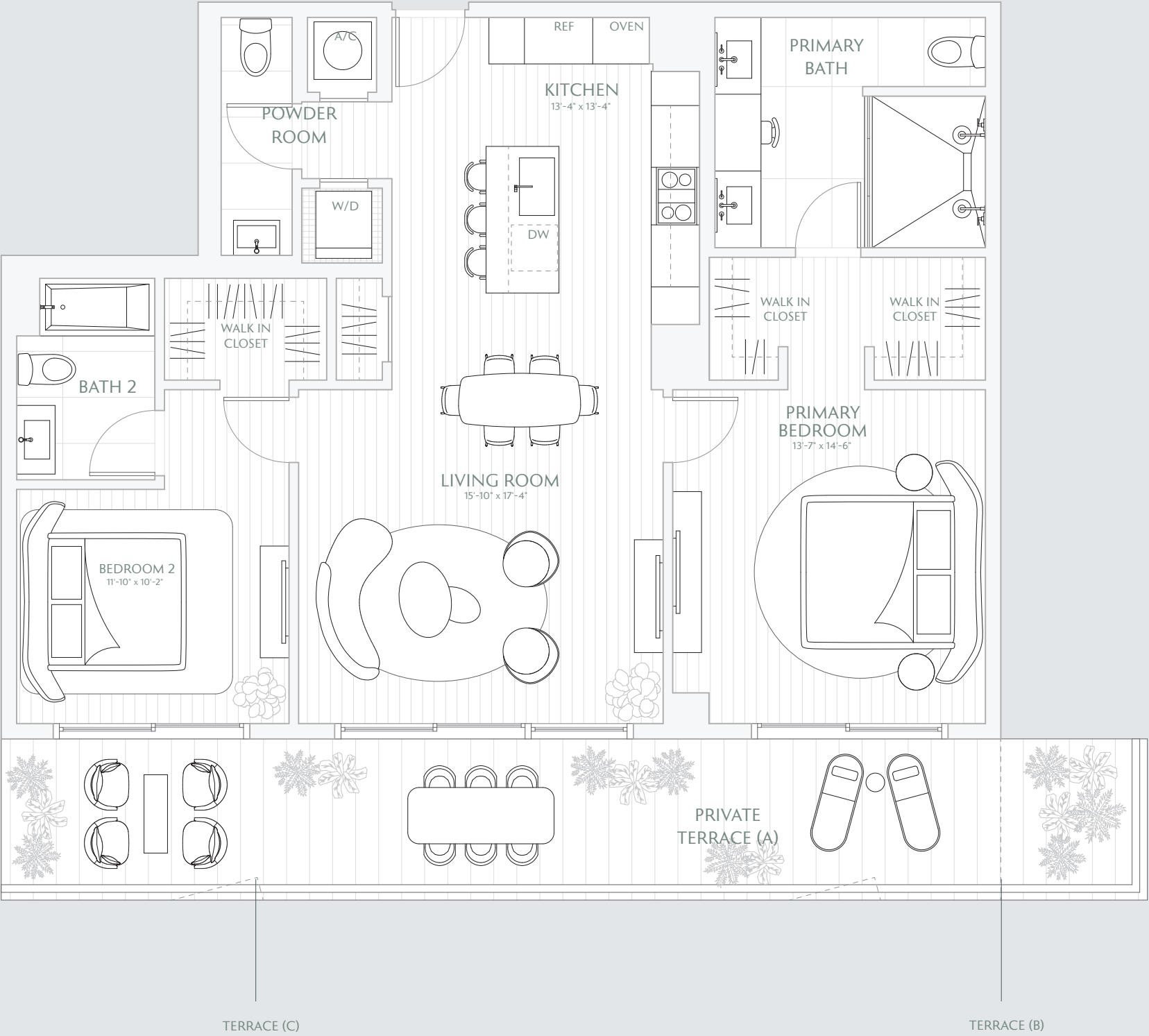
INTERIOR 1,275 SF / 118.4 M<sup>2</sup>  
EXTERIOR 343 SF / 31.8 M<sup>2</sup>  
TOTAL 1,613 SF / 149.8 M<sup>2</sup>


TERRACE A: 343 SF / 31.8 M<sup>2</sup>  
TERRACE B: 296 SF / 26.5 M<sup>2</sup>  
TERRACE C: 341 SF / 31.6 M<sup>2</sup>



Downtown Skyline  
& Water

Atlantic  
Ocean



 Stated interior square footage is measured to the exterior face of exterior walls and to the centerline of interior demising walls or to the exterior face of walls adjoining corridors or other common elements or shared facilities without excluding areas that may be occupied by columns or other structural components. This method of measurement varies from, and is larger than, the dimensions that would be determined by using the description and the definition of the Unit set forth in the Declaration (which generally only includes the interior airspace between the perimeter walls and excludes structural components). For reference, the area of the unit, determined in accordance with the unit boundaries set forth in the Declaration is set forth in Exhibit "3" to the Declaration. All dimensions are approximate and may vary with actual construction. Note that measurements of rooms set forth on this floor plan are generally taken at the greatest points of each given room (as if the room were a perfect rectangle), without regard for any cutouts or irregularities. Accordingly, the area of the actual room will typically be smaller than the product obtained by multiplying the stated length times width. All floor plans and development plans are subject to change. The Developer expressly reserves the right to make modifications, revisions, and changes it deems desirable in its sole and absolute discretion. All depictions of furnishings, appliances, built-ins, counters, soffits, floor coverings, lighting, landscaping and other matters of detail, including, without limitation, items of finish and decoration, are conceptual only and are not necessarily included in each Unit. Consult your prospectus and Purchase Agreement.



TOWER  
RESIDENCE

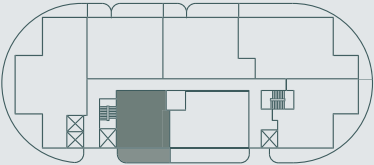
07

FLOORS 24 - 30

- 1 BEDROOM
- DEN
- 2 BATHS
- PRIVATE TERRACE

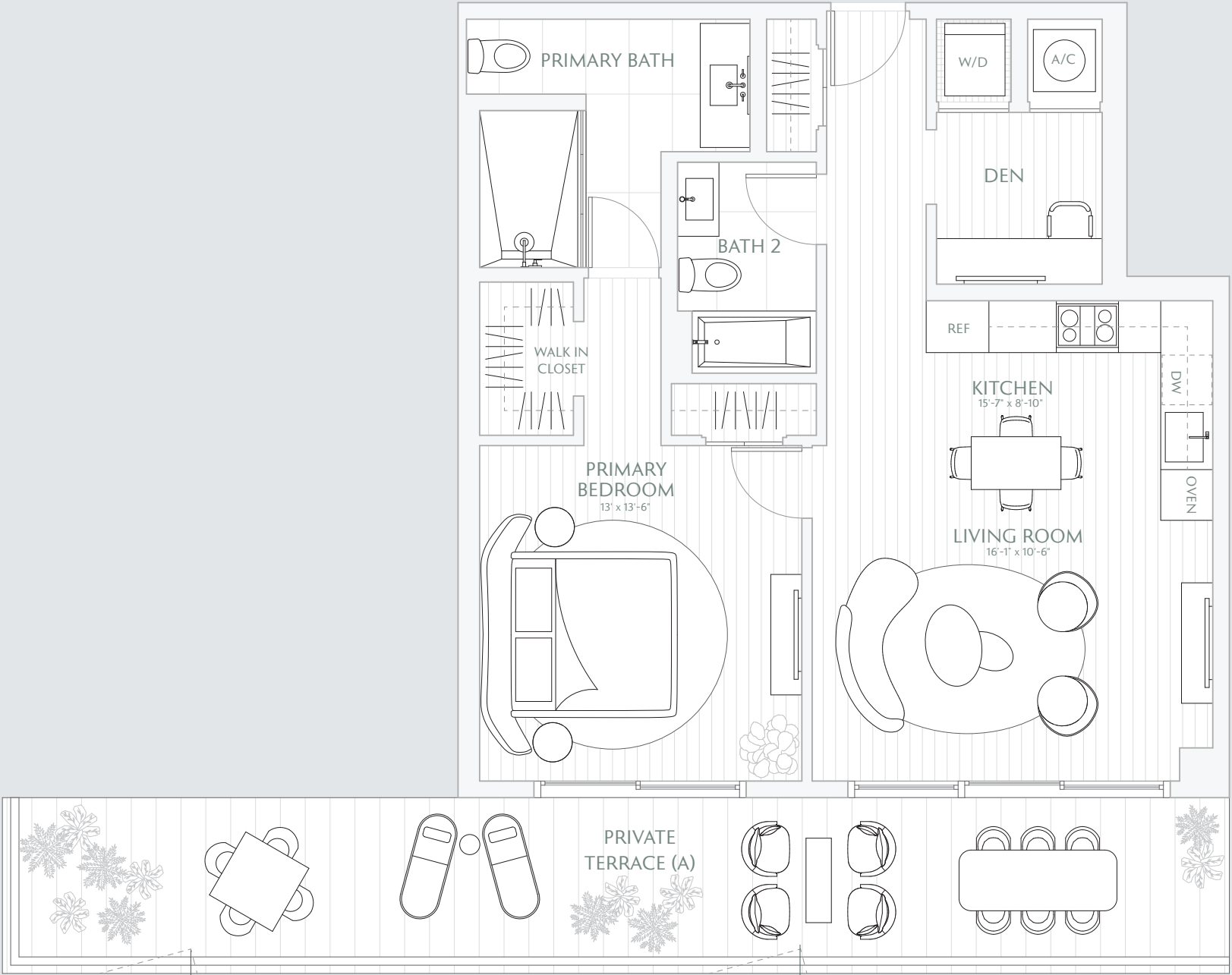
INTERIOR 915 SF / 85 M<sup>2</sup>  
EXTERIOR 345 SF / 32 M<sup>2</sup>  
TOTAL 1,260 SF / 117 M<sup>2</sup>

TERRACE A: 345 SF / 32 M<sup>2</sup>  
TERRACE B: 345 SF / 32 M<sup>2</sup>  
TERRACE C: 345 SF / 32 M<sup>2</sup>




Atlantic  
Ocean

Downtown Skyline  
& Water



TERRACE (C)

TERRACE (B)

 Stated interior square footage is measured to the exterior face of exterior walls and to the centerline of interior demising walls or to the exterior face of walls adjoining corridors or other common elements or shared facilities without excluding areas that may be occupied by columns or other structural components. This method of measurement varies from, and is larger than, the dimensions that would be determined by using the description and the definition of the Unit set forth in the Declaration (which generally only includes the interior airspace between the perimeter walls and excludes structural components). For reference, the area of the unit, determined in accordance with the unit boundaries set forth in the Declaration is set forth in Exhibit "3" to the Declaration. All dimensions are approximate and may vary with actual construction. Note that measurements of rooms set forth on this floor plan are generally taken at the greatest points of each given room (as if the room were a perfect rectangle), without regard for any cutouts or irregularities. Accordingly, the area of the actual room will typically be smaller than the product obtained by multiplying the stated length times width. All floor plans and development plans are subject to change. The Developer expressly reserves the right to make modifications, revisions, and changes it deems desirable in its sole and absolute discretion. All depictions of furnishings, appliances, built-ins, counters, soffits, floor coverings, lighting, landscaping and other matters of detail, including, without limitation, items of finish and decoration, are conceptual only and are not necessarily included in each Unit. Consult your prospectus and Purchase Agreement.

TOWER  
RESIDENCE

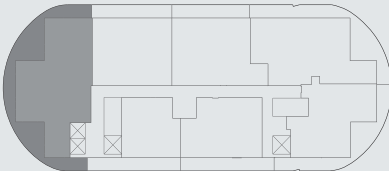
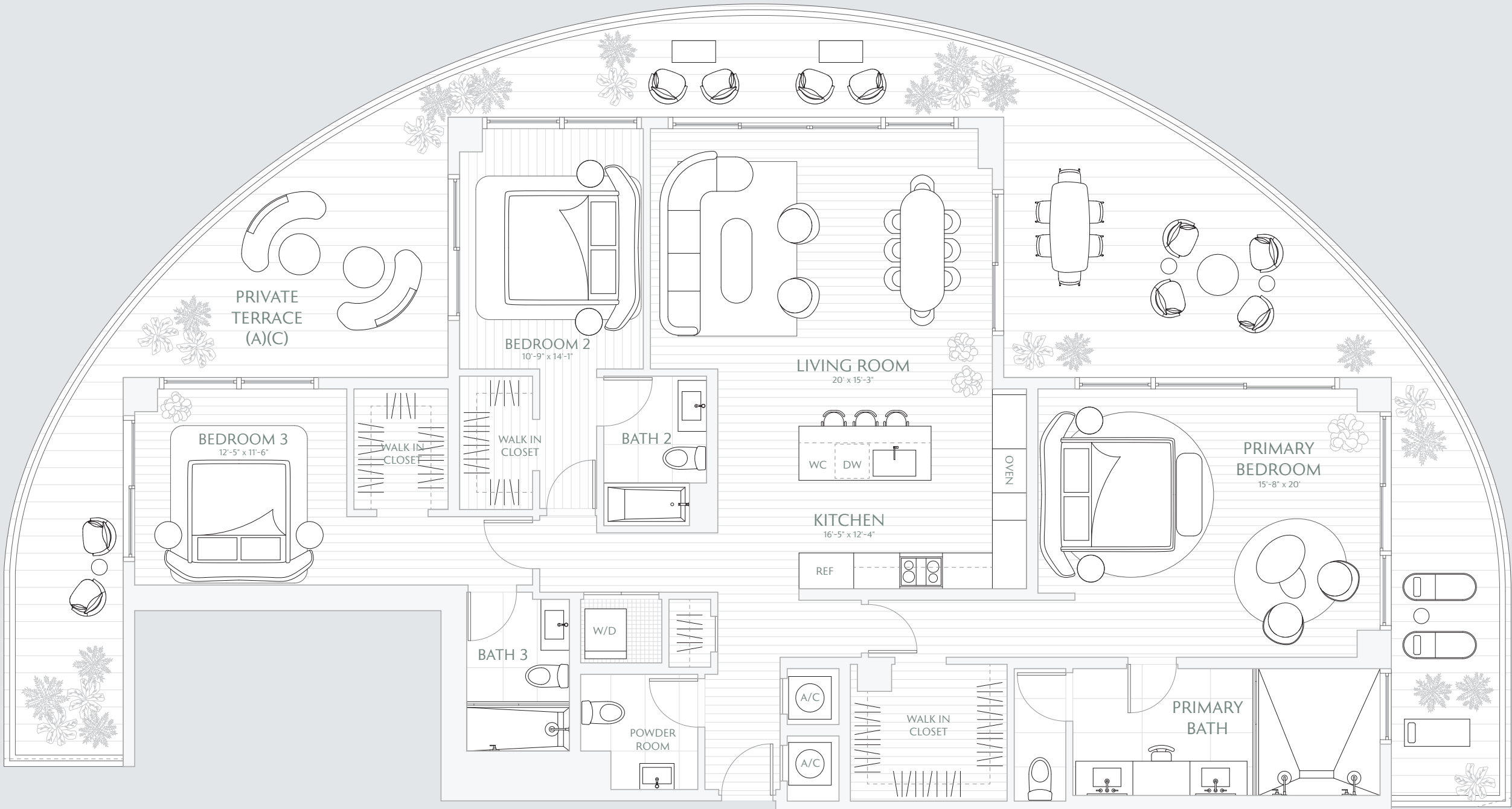
01

FLOORS 7 - 23

3 BEDROOMS  
3.5 BATHS  
PRIVATE TERRACE

INTERIOR 2,080 SF / 193.2 M<sup>2</sup>  
EXTERIOR 1,046 SF / 97.1 M<sup>2</sup>  
TOTAL 3,126 SF / 290.4 M<sup>2</sup>


TERRACE A: 1,046 SF / 97.1 M<sup>2</sup>  
TERRACE B: 1,044 SF / 96.9 M<sup>2</sup>  
TERRACE C: 1,047 SF / 97.2 M<sup>2</sup>



Downtown Skyline  
& Water

Atlantic  
Ocean



 Stated interior square footage is measured to the exterior face of exterior walls and to the centerline of interior demising walls or to the exterior face of walls adjoining corridors or other common elements or shared facilities without excluding areas that may be occupied by columns or other structural components. This method of measurement varies from, and is larger than, the dimensions that would be determined by using the description and the definition of the Unit set forth in the Declaration (which generally only includes the interior airspace between the perimeter walls and excludes structural components). For reference, the area of the unit, determined in accordance with the unit boundaries set forth in the Declaration is set forth in Exhibit "3" to the Declaration. All dimensions are approximate and may vary with actual construction. Note that measurements of rooms set forth on this floor plan are generally taken at the greatest points of each given room (as if the room were a perfect rectangle), without regard for any cutouts or irregularities. Accordingly, the area of the actual room will typically be smaller than the product obtained by multiplying the stated length times width. All floor plans and development plans are subject to change. The Developer expressly reserves the right to make modifications, revisions, and changes it deems desirable in its sole and absolute discretion. All depictions of furnishings, appliances, built-ins, counters, soffits, floor coverings, lighting, landscaping and other matters of detail, including, without limitation, items of finish and decoration, are conceptual only and are not necessarily included in each Unit. Consult your prospectus and Purchase Agreement.



TOWER

RESIDENCE

02

FLOORS 7 - 23

2 BEDROOMS

2.5 BATHS

PRIVATE TERRACES

INTERIOR 1,524 SF / 141.5 M<sup>2</sup>

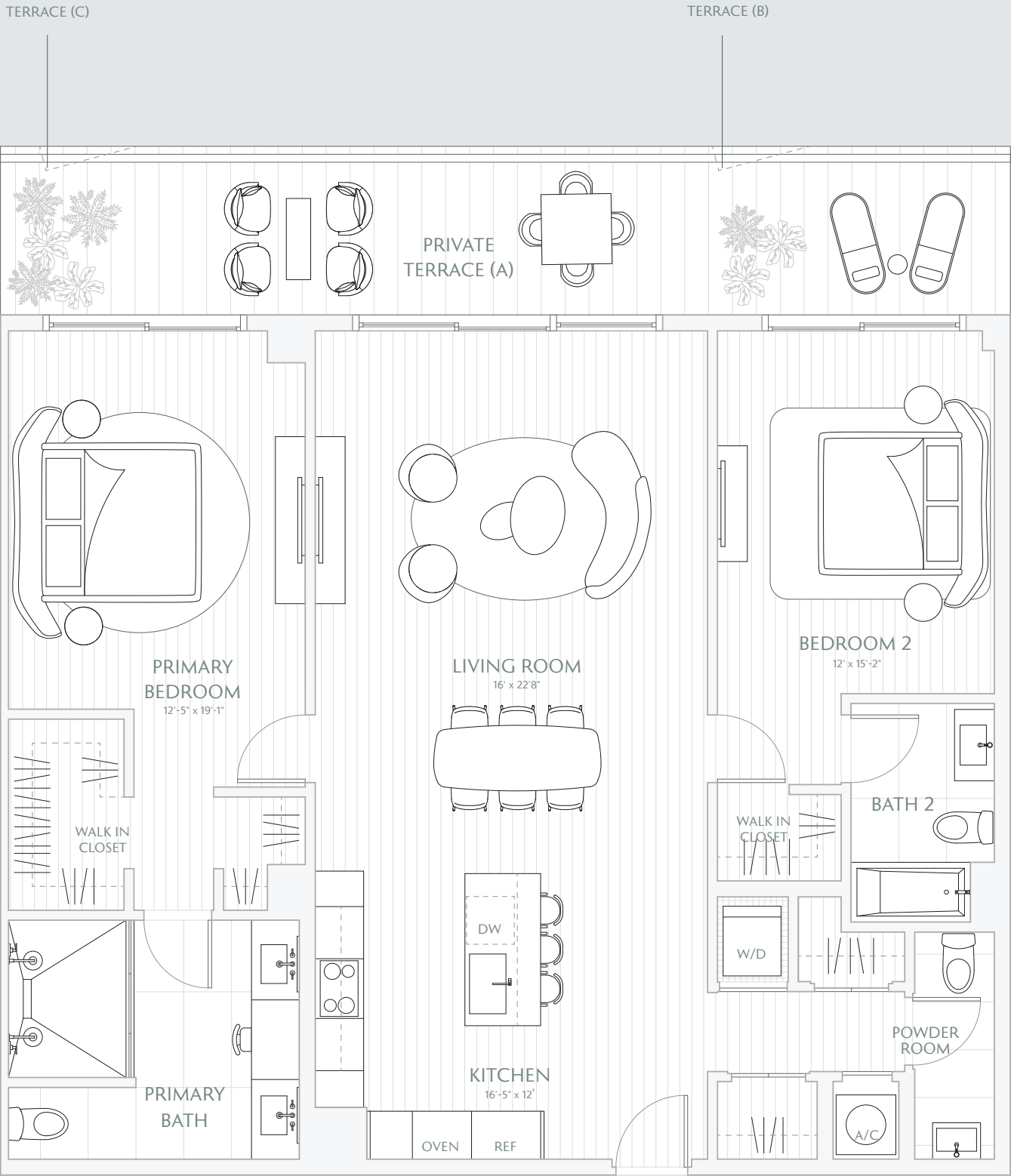
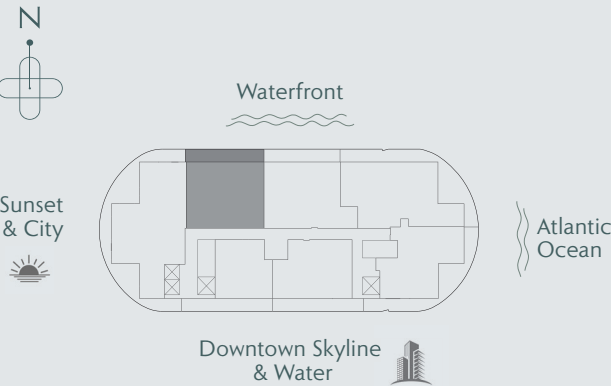
EXTERIOR 300 SF / 27.8 M<sup>2</sup>


TOTAL 1,824 SF / 169.4 M<sup>2</sup>

TERRACE A: 300 SF / 27.8 M<sup>2</sup>

TERRACE B: 295 SF / 27.4 M<sup>2</sup>

TERRACE C: 295 SF / 27.4 M<sup>2</sup>



 Stated interior square footage is measured to the exterior face of exterior walls and to the centerline of interior demising walls or to the exterior face of walls adjoining corridors or other common elements or shared facilities without excluding areas that may be occupied by columns or other structural components. This method of measurement varies from, and is larger than, the dimensions that would be determined by using the description and the definition of the Unit set forth in the Declaration (which generally only includes the interior airspace between the perimeter walls and excludes structural components). For reference, the area of the unit, determined in accordance with the unit boundaries set forth in the Declaration is set forth in Exhibit "3" to the Declaration. All dimensions are approximate and may vary with actual construction. Note that measurements of rooms set forth on this floor plan are generally taken at the greatest points of each given room (as if the room were a perfect rectangle), without regard for any cutouts or irregularities. Accordingly, the area of the actual room will typically be smaller than the product obtained by multiplying the stated length times width. All floor plans and development plans are subject to change. The Developer expressly reserves the right to make modifications, revisions, and changes it deems desirable in its sole and absolute discretion. All depictions of furnishings, appliances, built-ins, counters, soffits, floor coverings, lighting, landscaping and other matters of detail, including, without limitation, items of finish and decoration, are conceptual only and are not necessarily included in each Unit. Consult your prospectus and Purchase Agreement.

TOWER  
RESIDENCE

03

FLOORS 7 - 23

- 2 BEDROOMS
- DEN
- 2.5 BATHS
- PRIVATE TERRACE

INTERIOR 1,600 SF / 148.6 M<sup>2</sup>

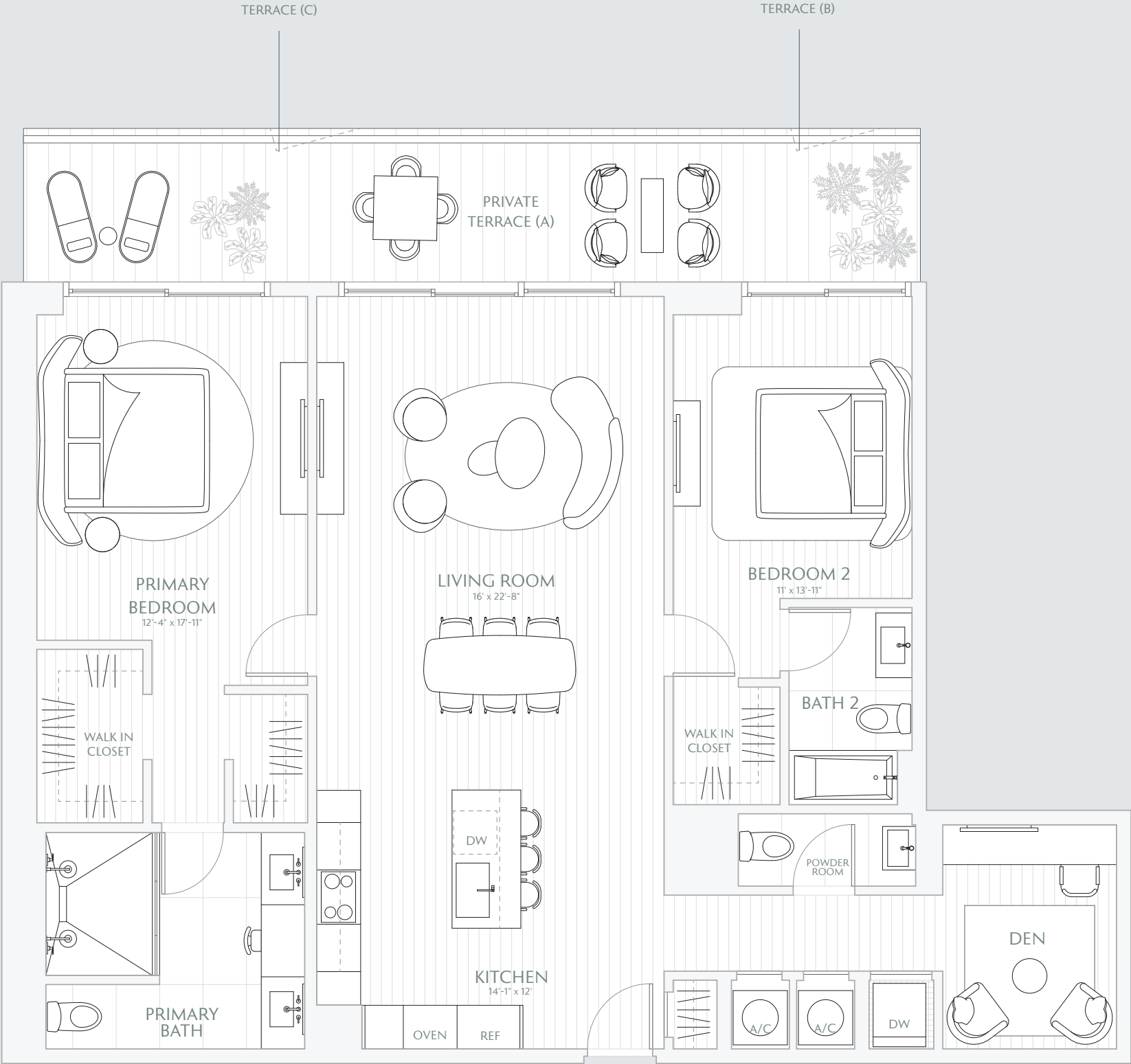
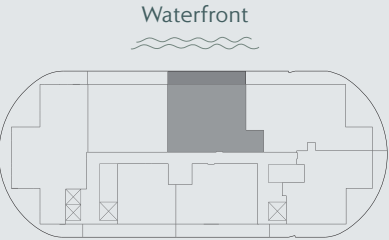
EXTERIOR 298 SF / 27.6 M<sup>2</sup>


TOTAL 1,898 SF / 176.3 M<sup>2</sup>

TERRACE A: 298 SF / 27.6 M<sup>2</sup>

TERRACE B: 286 SF / 26.5 M<sup>2</sup>

TERRACE C: 286 SF / 26.5 M<sup>2</sup>



 Stated interior square footage is measured to the exterior face of exterior walls and to the centerline of interior demising walls or to the exterior face of walls adjoining corridors or other common elements or shared facilities without excluding areas that may be occupied by columns or other structural components. This method of measurement varies from, and is larger than, the dimensions that would be determined by using the description and the definition of the Unit set forth in the Declaration (which generally only includes the interior airspace between the perimeter walls and excludes structural components). For reference, the area of the unit, determined in accordance with the unit boundaries set forth in the Declaration is set forth in Exhibit "3" to the Declaration. All dimensions are approximate and may vary with actual construction. Note that measurements of rooms set forth on this floor plan are generally taken at the greatest points of each given room (as if the room were a perfect rectangle), without regard for any cutouts or irregularities. Accordingly, the area of the actual room will typically be smaller than the product obtained by multiplying the stated length times width. All floor plans and development plans are subject to change. The Developer expressly reserves the right to make modifications, revisions, and changes it deems desirable in its sole and absolute discretion. All depictions of furnishings, appliances, built-ins, counters, soffits, floor coverings, lighting, landscaping and other matters of detail, including, without limitation, items of finish and decoration, are conceptual only and are not necessarily included in each Unit. Consult your prospectus and Purchase Agreement.

TOWER  
RESIDENCE

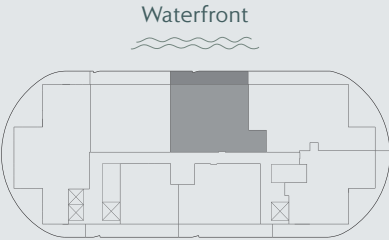
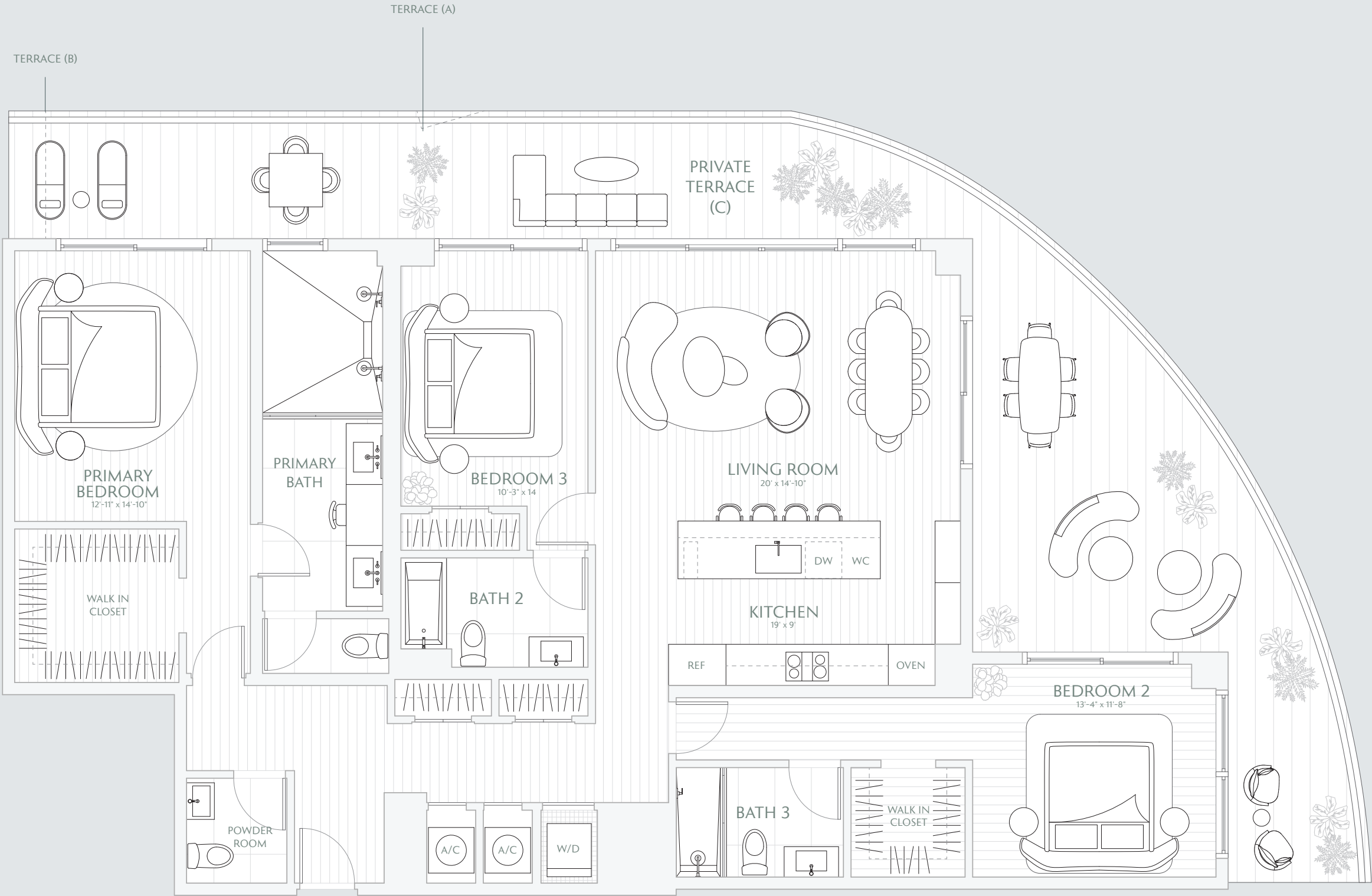
04

FLOORS 7 - 23

3 BEDROOMS  
3.5 BATHS  
PRIVATE TERRACE

INTERIOR 1,958 SF / 181.9 M<sup>2</sup>  
EXTERIOR 755 SF / 70.1 M<sup>2</sup>  
TOTAL 2,713 SF / 252 M<sup>2</sup>

TERRACE A: 755 SF / 70.1 M<sup>2</sup>  
TERRACE B: 743 SF / 69 M<sup>2</sup>  
TERRACE C: 758 SF / 70.4 M<sup>2</sup>



Stated interior square footage is measured to the exterior face of exterior walls and to the centerline of interior demising walls or to the exterior face of walls adjoining corridors or other common elements or shared facilities without excluding areas that may be occupied by columns or other structural components. This method of measurement varies from, and is larger than, the dimensions that would be determined by using the description and the definition of the Unit set forth in the Declaration (which generally only includes the interior airspace between the perimeter walls and excludes structural components). For reference, the area of the unit, determined in accordance with the unit boundaries set forth in the Declaration is set forth in Exhibit "3" to the Declaration. All dimensions are approximate and may vary with actual construction. Note that measurements of rooms set forth on this floor plan are generally taken at the greatest points of each given room (as if the room were a perfect rectangle), without regard for any cutouts or irregularities. Accordingly, the area of the actual room will typically be smaller than the product obtained by multiplying the stated length times width. All floor plans and development plans are subject to change. The Developer expressly reserves the right to make modifications, revisions, and changes it deems desirable in its sole and absolute discretion. All depictions of furnishings, appliances, built-ins, counters, soffits, floor coverings, lighting, landscaping and other matters of detail, including, without limitation, items of finish and decoration, are conceptual only and are not necessarily included in each Unit. Consult your prospectus and Purchase Agreement.

TOWER

RESIDENCE

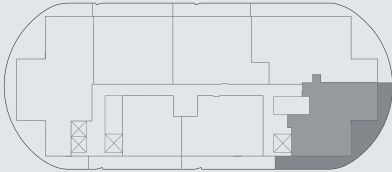
05

FLOORS 7 - 23

2 BEDROOMS  
2.5 BATHS  
PRIVATE TERRACE

INTERIOR 1,370 SF / 127.2 M<sup>2</sup>  
EXTERIOR 649 SF / 60.2 M<sup>2</sup>  
TOTAL 2,019 SF / 187.5 M<sup>2</sup>


TERRACE A: 647 SF / 60.1 M<sup>2</sup>  
TERRACE B: 647 SF / 60.1 M<sup>2</sup>  
TERRACE C: 649 SF / 60.2 M<sup>2</sup>

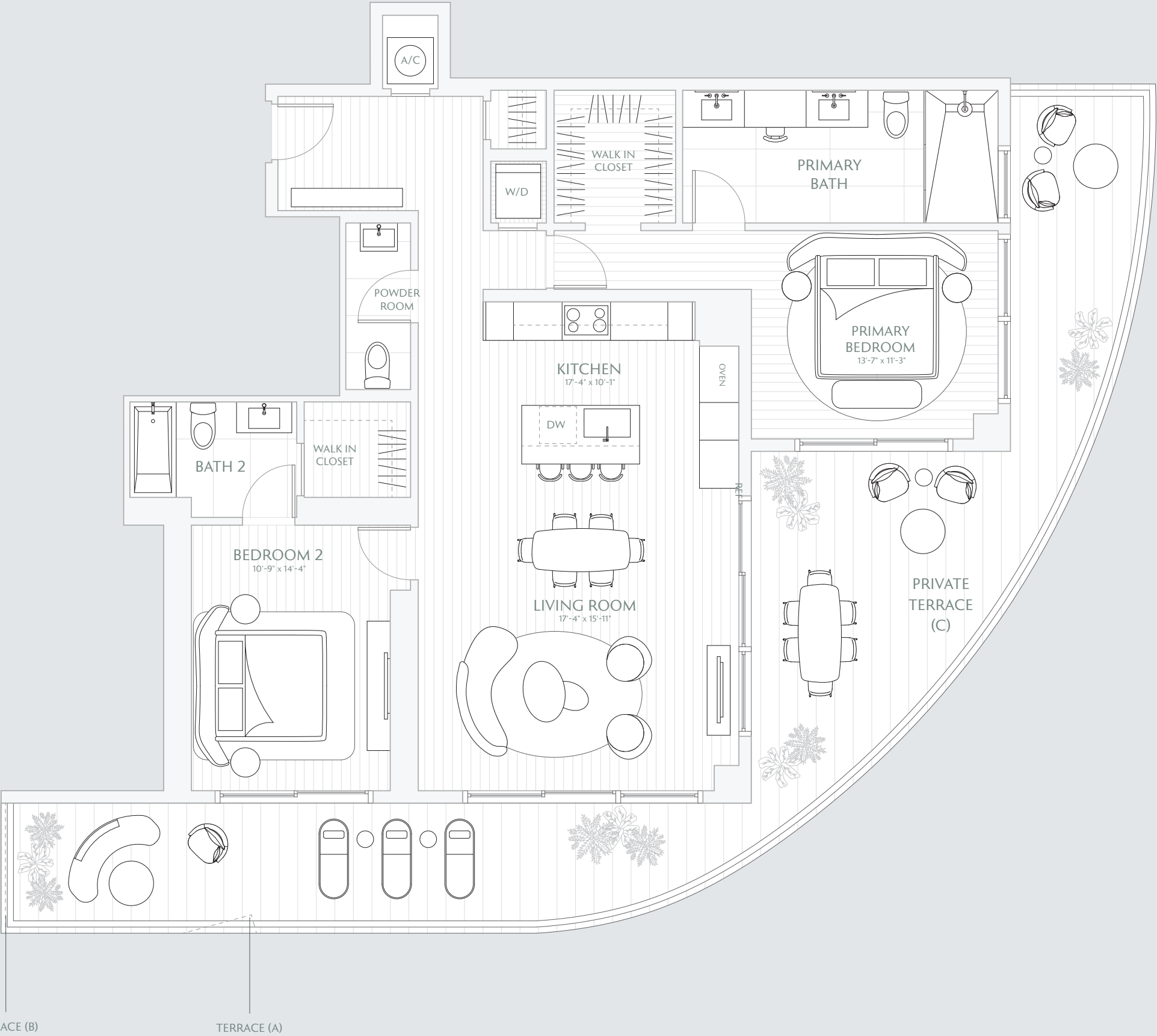


Downtown Skyline  
& Water



Atlantic  
Ocean

 Stated interior square footage is measured to the exterior face of exterior walls and to the centerline of interior demising walls or to the exterior face of walls adjoining corridors or other common elements or shared facilities without excluding areas that may be occupied by columns or other structural components. This method of measurement varies from, and is larger than, the dimensions that would be determined by using the description and the definition of the Unit set forth in the Declaration (which generally only includes the interior airspace between the perimeter walls and excludes structural components). For reference, the area of the unit, determined in accordance with the unit boundaries set forth in the Declaration is set forth in Exhibit "3" to the Declaration. All dimensions are approximate and may vary with actual construction. Note that measurements of rooms set forth on this floor plan are generally taken at the greatest points of each given room (as if the room were a perfect rectangle), without regard for any cutouts or irregularities. Accordingly, the area of the actual room will typically be smaller than the product obtained by multiplying the stated length times width. All floor plans and development plans are subject to change. The Developer expressly reserves the right to make modifications, revisions, and changes it deems desirable in its sole and absolute discretion. All depictions of furnishings, appliances, built-ins, counters, soffits, floor coverings, lighting, landscaping and other matters of detail, including, without limitation, items of finish and decoration, are conceptual only and are not necessarily included in each Unit. Consult your prospectus and Purchase Agreement.



TOWER  
RESIDENCE

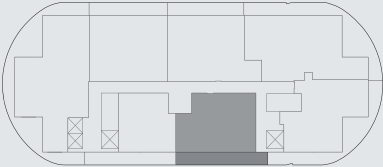
06

FLOORS 7 - 23

2 BEDROOMS  
2.5 BATHS  
PRIVATE TERRACE

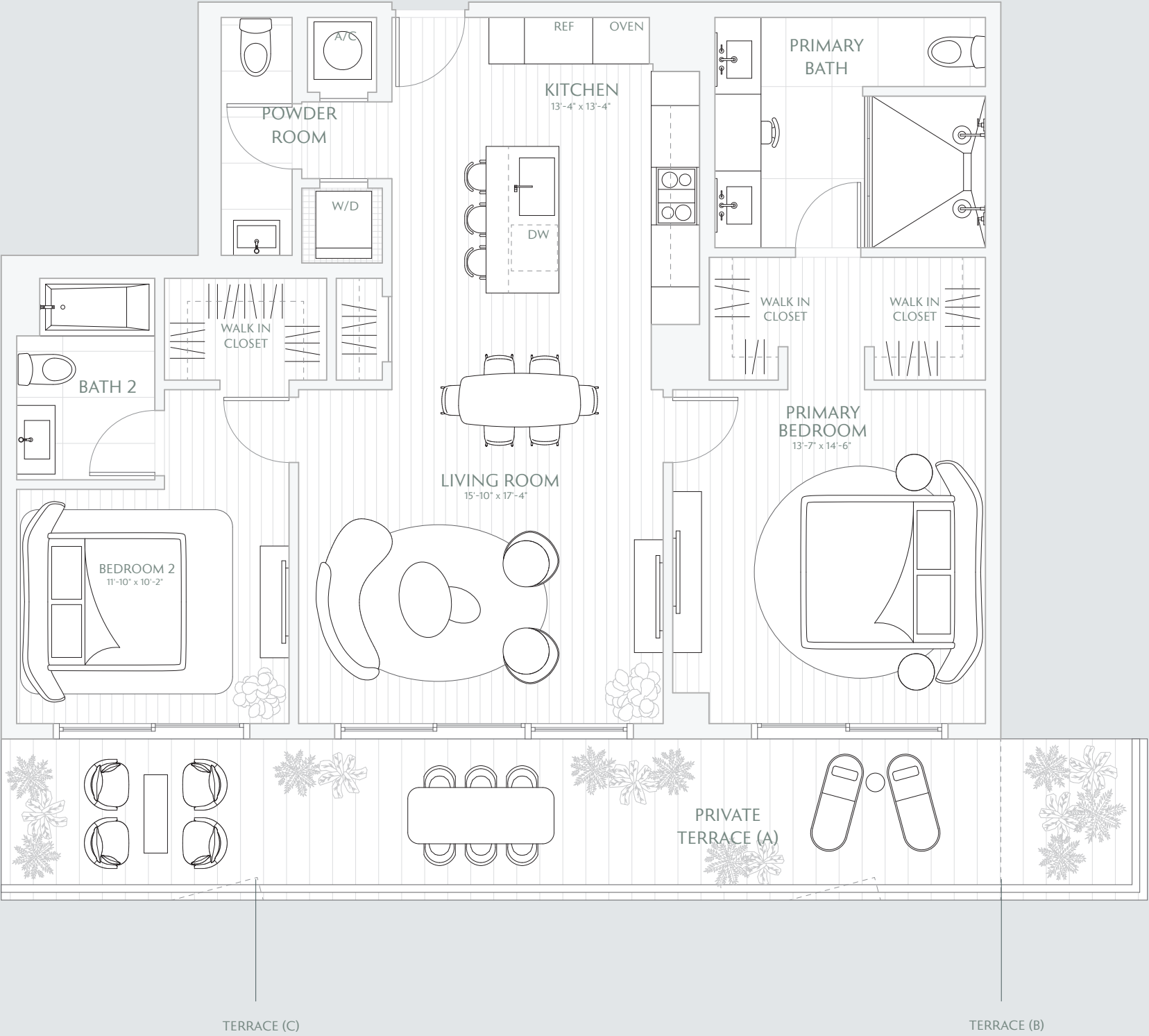
INTERIOR 1,275 SF / 118.4 M<sup>2</sup>  
EXTERIOR 343 SF / 31.8 M<sup>2</sup>  
TOTAL 1,613 SF / 149.8 M<sup>2</sup>


TERRACE A: 343 SF / 31.8 M<sup>2</sup>  
TERRACE B: 296 SF / 26.5 M<sup>2</sup>  
TERRACE C: 341 SF / 31.6 M<sup>2</sup>



Atlantic  
Ocean

Downtown Skyline  
& Water



 Stated interior square footage is measured to the exterior face of exterior walls and to the centerline of interior demising walls or to the exterior face of walls adjoining corridors or other common elements or shared facilities without excluding areas that may be occupied by columns or other structural components. This method of measurement varies from, and is larger than, the dimensions that would be determined by using the description and the definition of the Unit set forth in the Declaration (which generally only includes the interior airspace between the perimeter walls and excludes structural components). For reference, the area of the unit, determined in accordance with the unit boundaries set forth in the Declaration is set forth in Exhibit "3" to the Declaration. All dimensions are approximate and may vary with actual construction. Note that measurements of rooms set forth on this floor plan are generally taken at the greatest points of each given room (as if the room were a perfect rectangle), without regard for any cutouts or irregularities. Accordingly, the area of the actual room will typically be smaller than the product obtained by multiplying the stated length times width. All floor plans and development plans are subject to change. The Developer expressly reserves the right to make modifications, revisions, and changes it deems desirable in its sole and absolute discretion. All depictions of furnishings, appliances, built-ins, counters, soffits, floor coverings, lighting, landscaping and other matters of detail, including, without limitation, items of finish and decoration, are conceptual only and are not necessarily included in each Unit. Consult your prospectus and Purchase Agreement.



TOWER

RESIDENCE

07

FLOORS 7 - 23

- 1 BEDROOM
- DEN
- 2 BATHS
- PRIVATE TERRACE

INTERIOR 915 SF / 85 M<sup>2</sup>

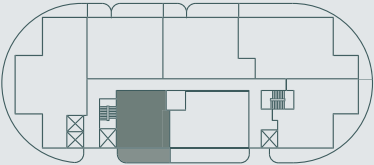
EXTERIOR 345 SF / 32 M<sup>2</sup>

TOTAL 1,260 SF / 117 M<sup>2</sup>

TERRACE A: 345 SF / 32 M<sup>2</sup>

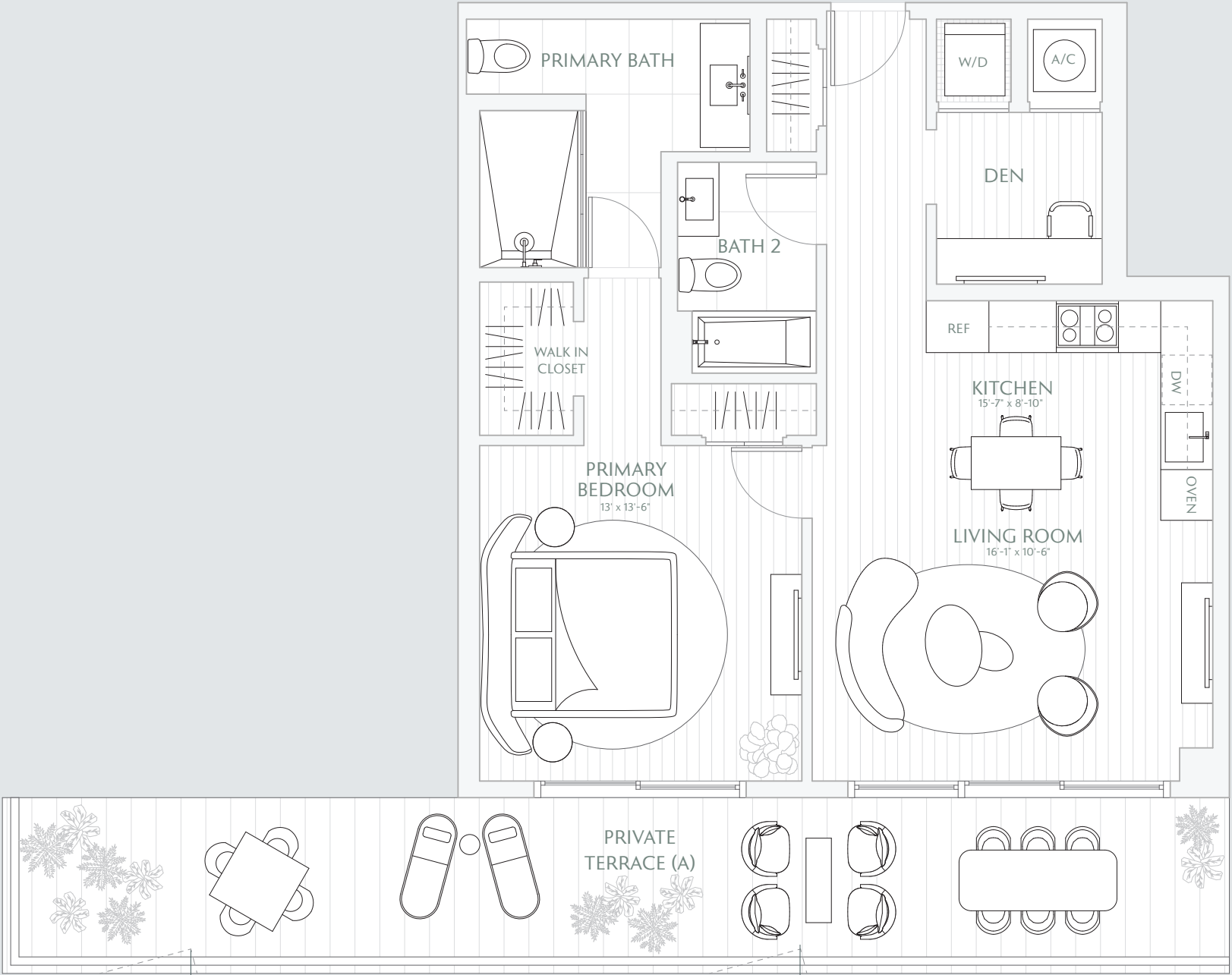
TERRACE B: 345 SF / 32 M<sup>2</sup>

TERRACE C: 345 SF / 32 M<sup>2</sup>




Downtown Skyline

& Water



TERRACE (C)

TERRACE (B)

 Stated interior square footage is measured to the exterior face of exterior walls and to the centerline of interior demising walls or to the exterior face of walls adjoining corridors or other common elements or shared facilities without excluding areas that may be occupied by columns or other structural components. This method of measurement varies from, and is larger than, the dimensions that would be determined by using the description and the definition of the Unit set forth in the Declaration (which generally only includes the interior airspace between the perimeter walls and excludes structural components). For reference, the area of the unit, determined in accordance with the unit boundaries set forth in the Declaration is set forth in Exhibit "3" to the Declaration. All dimensions are approximate and may vary with actual construction. Note that measurements of rooms set forth on this floor plan are generally taken at the greatest points of each given room (as if the room were a perfect rectangle), without regard for any cutouts or irregularities. Accordingly, the area of the actual room will typically be smaller than the product obtained by multiplying the stated length times width. All floor plans and development plans are subject to change. The Developer expressly reserves the right to make modifications, revisions, and changes it deems desirable in its sole and absolute discretion. All depictions of furnishings, appliances, built-ins, counters, soffits, floor coverings, lighting, landscaping and other matters of detail, including, without limitation, items of finish and decoration, are conceptual only and are not necessarily included in each Unit. Consult your prospectus and Purchase Agreement.