

# 1. .hl .

.i m  
.r el q

slq. .hrr. f .

ql. .hq. f .

srq. .hsl. f .



Somi Walk (the "Condominium") is developed by ALTA SOMI I, LLC ("Developer") and you should only rely on the Developer's written representations. The illustrations and images are conceptual and may vary from concept to actual construction. The images are examples and do not reflect the design or decor of the completed Condominium. The floor plan, unit layout, locations of windows, floors closets, plumbing fixtures, mechanical equipment, appliances, structural elements, architectural design elements, views, and the uses configurations, and entries to rooms may change based on final approval plans, permitting, and completed construction. The furniture plan and the use of a space illustrated are suggested us only and not intended to guaranty or represent and specific use of space. Furnishings, design features, and decor illustrated and suggested uses only and not intended to guaranty or represent any specific use of space. Furnishings, design features, and decor illustrated are not included with purchase of a Unit. Certain amenities and features may require additional expense by Unit owner. There are water views, but the Condominium is not waterfront, and the views will vary depending on the Unit purchased. No view, water or otherwise, is guaranteed. Consult only the Developer's Prospectus for the Condominium to learn terms, conditions, specifications, estimated costs, Unit views, and to learn what is included with a Unit purchase and how to calculate the Unit size. The balconies depicted are conceptual and the size will vary based on final permitting and completed construction. Pursuant to the license agreement, Developer has the right to use the trade names, marks, images, and logos of Alta Development LLC for so long as the license agreement is not terminated or otherwise lapses.



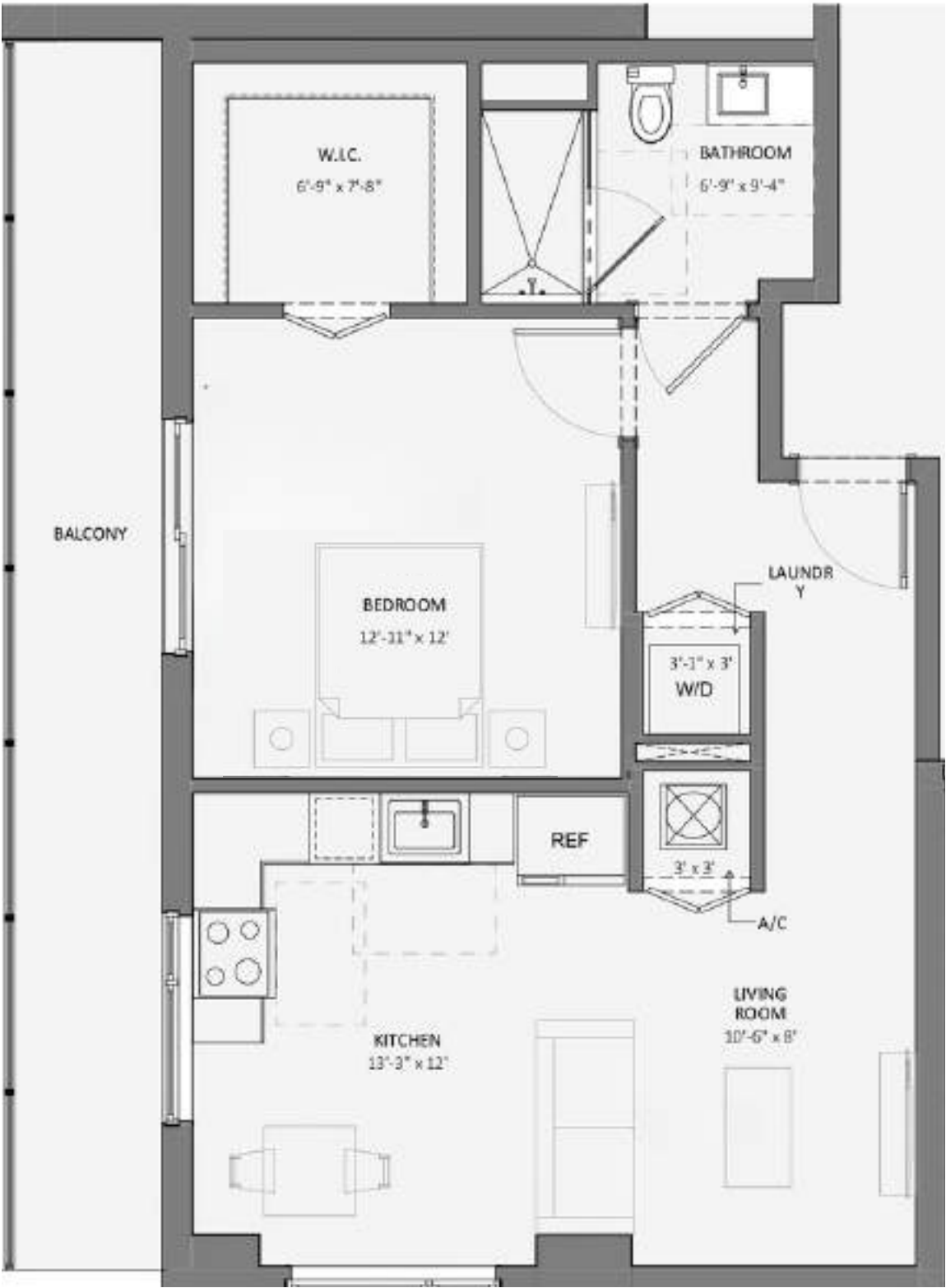
h/ /e/h/ /

/f i  
/of i

r ho/ /e/qq/ d /

hnm/ /e/hm/ d /

s os/ /e/sf/ d /



SOMI WALK  
RESIDENCES

Somi Walk (the "Condominium") is developed by ALTA SOMI I, LLC ("Developer") and you should only rely on the Developer's written representations. The illustrations and images are conceptual and may vary from concept to actual construction. The images are examples and do not reflect the design or decor of the completed Condominium. The floor plan, unit layout, locations of windows, floors closets, plumbing fixtures, mechanical equipment, appliances, structural elements, architectural design elements, views, and the uses configurations, and entries to rooms may change based on final approval plans, permitting, and completed construction. The furniture plan and the use of a space illustrated are suggested us only and not intended to guaranty or represent and specific use of space. Furnishings, design features, and decor illustrated and suggested uses only and not intended to guaranty or represent any specific use of space. Furnishings, design features, and decor illustrated are not included with purchase of a Unit. Certain amenities and features may require additional expense by Unit owner. There are water views, but the Condominium is not waterfront, and the views will vary depending on the Unit purchased. No view, water or otherwise, is guaranteed. Consult only the Developer's Prospectus for the Condominium to learn terms, conditions, specifications, estimated costs, Unit views, and to learn what is included with a Unit purchase and how to calculate the Unit size. The balconies depicted are conceptual and the size will vary based on final permitting and completed construction. Pursuant to the license agreement, Developer has the right to use the trade names, marks, images, and logos of Alta Development LLC for so long as the license agreement is not terminated or otherwise lapses.

Developer is not incorporated in, located in, nor a resident of, New York, or residents of any other jurisdiction were permitted by law.  
Reproduction for any use is not authorized. 2024 ALTA SOMI I, LLC. Artist's renderings of development; excludes images of surrounding and neighboring buildings.



# 1. .hl .

.i n  
.r el q

r m. .hqt. f .

t nT .ht. f .

s i q. .hrr. f .



Somi Walk (the "Condominium") is developed by ALTA SOMI I, LLC ("Developer") and you should only rely on the Developer's written representations. The illustrations and images are conceptual and may vary from concept to actual construction. The images are examples and do not reflect the design or decor of the completed Condominium. The floor plan, unit layout, locations of windows, floors closets, plumbing fixtures, mechanical equipment, appliances, structural elements, architectural design elements, views, and the uses configurations, and entries to rooms may change based on final approval plans, permitting, and completed construction. The furniture plan and the use of a space illustrated are suggested us only and not intended to guaranty or represent and specific use of space. Furnishings, design features, and decor illustrated and suggested uses only and not intended to guaranty or represent any specific use of space. Furnishings, design features, and decor illustrated are not included with purchase of a Unit. Certain amenities and features may require additional expense by Unit owner. There are water views, but the Condominium is not waterfront, and the views will vary depending on the Unit purchased. No view, water or otherwise, is guaranteed. Consult only the Developer's Prospectus for the Condominium to learn terms, conditions, specifications, estimated costs, Unit views, and to learn what is included with a Unit purchase and how to calculate the Unit size. The balconies depicted are conceptual and the size will vary based on final permitting and completed construction. Pursuant to the license agreement, Developer has the right to use the trade names, marks, images, and logos of Alta Development LLC for so long as the license agreement is not terminated or otherwise lapses.

Developer is not incorporated in, located in, nor a resident of, New York, or residents of any other jurisdiction were permitted by law.  
Reproduction for any use is not authorized. 2024 ALTA SOMI I, LLC. Artist's renderings of development; excludes images of surrounding and neighboring buildings.



h/ /e/h/ /

/f m  
/of m

qi m/ /e/os/ d /

hnoT /e/hm/ d /

r qs/ /e/rh/ d /



Somi Walk (the "Condominium") is developed by ALTA SOMI I, LLC ("Developer") and you should only rely on the Developer's written representations. The illustrations and images are conceptual and may vary from concept to actual construction. The images are examples and do not reflect the design or decor of the completed Condominium. The floor plan, unit layout, locations of windows, floors closets, plumbing fixtures, mechanical equipment, appliances, structural elements, architectural design elements, views, and the uses configurations, and entries to rooms may change based on final approval plans, permitting, and completed construction. The furniture plan and the use of a space illustrated are suggested us only and not intended to guaranty or represent and specific use of space. Furnishings, design features, and decor illustrated and suggested uses only and not intended to guaranty or represent any specific use of space. Furnishings, design features, and decor illustrated are not included with purchase of a Unit. Certain amenities and features may require additional expense by Unit owner. There are water views, but the Condominium is not waterfront, and the views will vary depending on the Unit purchased. No view, water or otherwise, is guaranteed. Consult only the Developer's Prospectus for the Condominium to learn terms, conditions, specifications, estimated costs, Unit views, and to learn what is included with a Unit purchase and how to calculate the Unit size. The balconies depicted are conceptual and the size will vary based on final permitting and completed construction. Pursuant to the license agreement, Developer has the right to use the trade names, marks, images, and logos of Alta Development LLC for so long as the license agreement is not terminated or otherwise lapses.





# 1. .hl .

.i o  
.r el q

r ll. .hqs. f .

nqT .hn. f .

r or. .hri. f .



Somi Walk (the "Condominium") is developed by ALTA SOMI I, LLC ("Developer") and you should only rely on the Developer's written representations. The illustrations and images are conceptual and may vary from concept to actual construction. The images are examples and do not reflect the design or decor of the completed Condominium. The floor plan, unit layout, locations of windows, floors closets, plumbing fixtures, mechanical equipment, appliances, structural elements, architectural design elements, views, and the uses configurations, and entries to rooms may change based on final approval plans, permitting, and completed construction. The furniture plan and the use of a space illustrated are suggested us only and not intended to guaranty or represent and specific use of space. Furnishings, design features, and decor illustrated and suggested uses only and not intended to guaranty or represent any specific use of space. Furnishings, design features, and decor illustrated are not included with purchase of a Unit. Certain amenities and features may require additional expense by Unit owner. There are water views, but the Condominium is not waterfront, and the views will vary depending on the Unit purchased. No view, water or otherwise, is guaranteed. Consult only the Developer's Prospectus for the Condominium to learn terms, conditions, specifications, estimated costs, Unit views, and to learn what is included with a Unit purchase and how to calculate the Unit size. The balconies depicted are conceptual and the size will vary based on final permitting and completed construction. Pursuant to the license agreement, Developer has the right to use the trade names, marks, images, and logos of Alta Development LLC for so long as the license agreement is not terminated or otherwise lapses.

Developer is not incorporated in, located in, nor a resident of, New York, or residents of any other jurisdiction were permitted by law.  
Reproduction for any use is not authorized. 2024 ALTA SOMI I, LLC. Artist's renderings of development; excludes images of surrounding and neighboring buildings.



h/ /e/h/ /

/f n  
/of n

qhh/ /e/or/ d /

ns hT /e/mo/ d /

t ti/ /e/ti/ d /



Somi Walk (the "Condominium") is developed by ALTA SOMI I, LLC ("Developer") and you should only rely on the Developer's written representations. The illustrations and images are conceptual and may vary from concept to actual construction. The images are examples and do not reflect the design or decor of the completed Condominium. The floor plan, unit layout, locations of windows, floors closets, plumbing fixtures, mechanical equipment, appliances, structural elements, architectural design elements, views, and the uses configurations, and entries to rooms may change based on final approval plans, permitting, and completed construction. The furniture plan and the use of a space illustrated are suggested us only and not intended to guaranty or represent and specific use of space. Furnishings, design features, and decor illustrated and suggested uses only and not intended to guaranty or represent any specific use of space. Furnishings, design features, and decor illustrated are not included with purchase of a Unit. Certain amenities and features may require additional expense by Unit owner. There are water views, but the Condominium is not waterfront, and the views will vary depending on the Unit purchased. No view, water or otherwise, is guaranteed. Consult only the Developer's Prospectus for the Condominium to learn terms, conditions, specifications, estimated costs, Unit views, and to learn what is included with a Unit purchase and how to calculate the Unit size. The balconies depicted are conceptual and the size will vary based on final permitting and completed construction. Pursuant to the license agreement, Developer has the right to use the trade names, marks, images, and logos of Alta Development LLC for so long as the license agreement is not terminated or otherwise lapses.

Developer is not incorporated in, located in, nor a resident of, New York, or residents of any other jurisdiction were permitted by law.  
Reproduction for any use is not authorized. 2024 ALTA SOMI I, LLC. Artist's renderings of development; excludes images of surrounding and neighboring buildings.



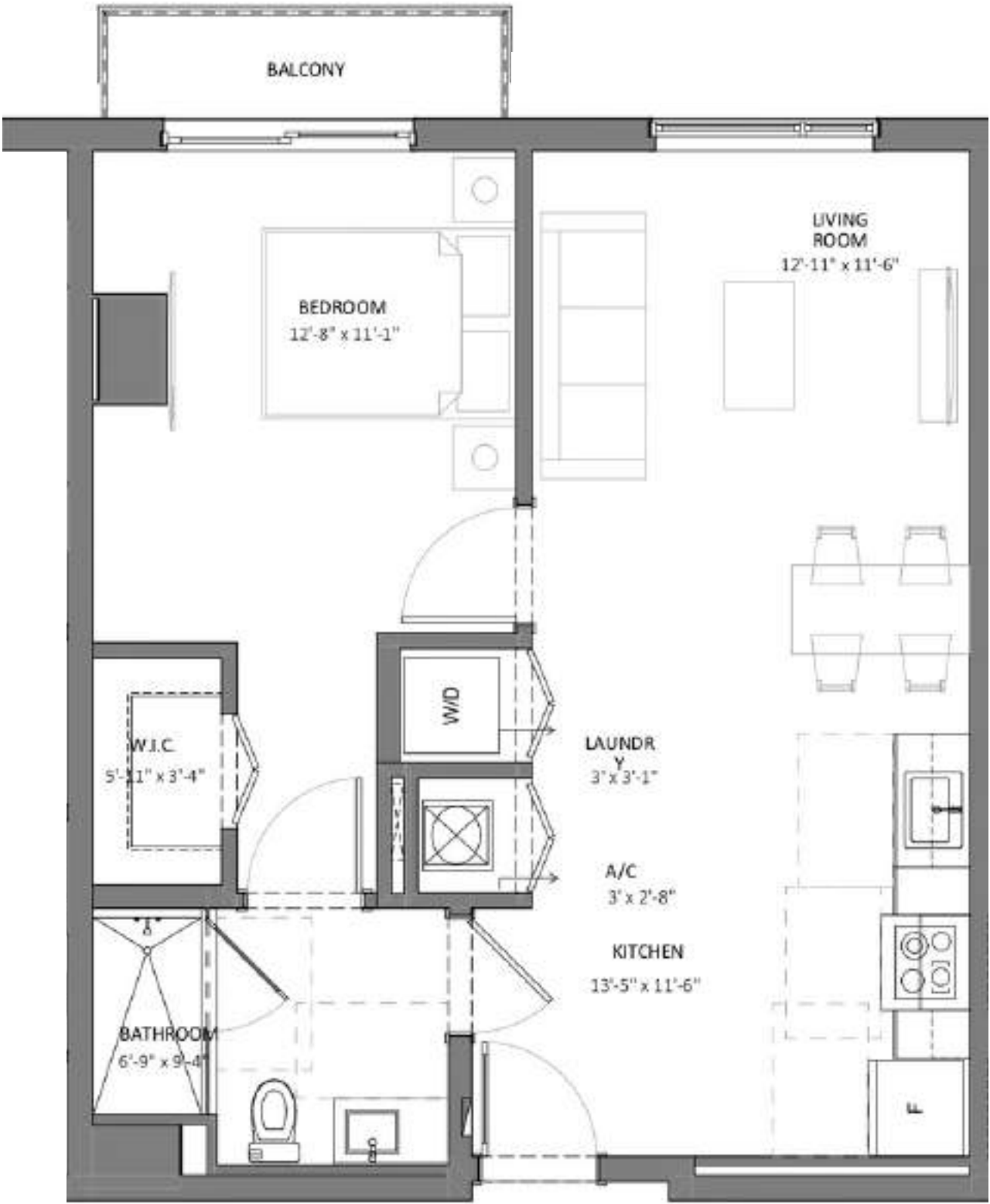
# 1. .hl .

.i q  
.rel q

rr3. .hrm f .

nm .hn. f .

sii. .hrq. f .



Somi Walk (the "Condominium") is developed by ALTA SOMI I, LLC ("Developer") and you should only rely on the Developer's written representations. The illustrations and images are conceptual and may vary from concept to actual construction. The images are examples and do not reflect the design or decor of the completed Condominium. The floor plan, unit layout, locations of windows, floors closets, plumbing fixtures, mechanical equipment, appliances, structural elements, architectural design elements, views, and the uses configurations, and entries to rooms may change based on final approval plans, permitting, and completed construction. The furniture plan and the use of a space illustrated are suggested us only and not intended to guaranty or represent and specific use of space. Furnishings, design features, and decor illustrated and suggested uses only and not intended to guaranty or represent any specific use of space. Furnishings, design features, and decor illustrated are not included with purchase of a Unit. Certain amenities and features may require additional expense by Unit owner. There are water views, but the Condominium is not waterfront, and the views will vary depending on the Unit purchased. No view, water or otherwise, is guaranteed. Consult only the Developer's Prospectus for the Condominium to learn terms, conditions, specifications, estimated costs, Unit views, and to learn what is included with a Unit purchase and how to calculate the Unit size. The balconies depicted are conceptual and the size will vary based on final permitting and completed construction. Pursuant to the license agreement, Developer has the right to use the trade names, marks, images, and logos of Alta Development LLC for so long as the license agreement is not terminated or otherwise lapses.



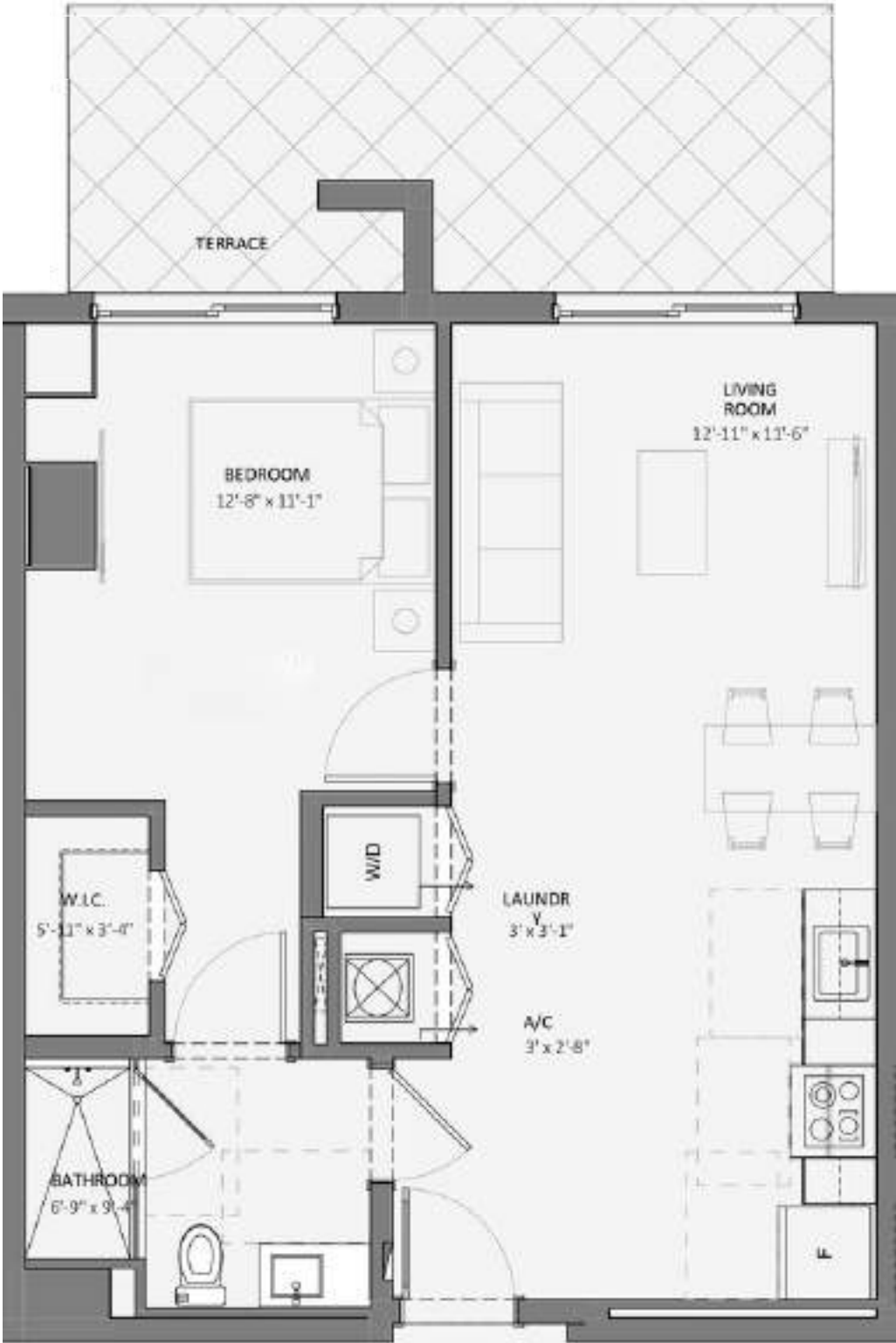
h.eh.

.fo  
.of o

qqt. .eqi. d .

nno. .enh. d .

hÜhn. .ehf m d .



SOMI WALK  
RESIDENCES

Somi Walk (the "Condominium") is developed by ALTA SOMI I, LLC ("Developer") and you should only rely on the Developer's written representations. The illustrations and images are conceptual and may vary from concept to actual construction. The images are examples and do not reflect the design or decor of the completed Condominium. The floor plan, unit layout, locations of windows, floors closets, plumbing fixtures, mechanical equipment, appliances, structural elements, architectural design elements, views, and the uses configurations, and entries to rooms may change based on final approval plans, permitting, and completed construction. The furniture plan and the use of a space illustrated are suggested us only and not intended to guaranty or represent and specific use of space. Furnishings, design features, and decor illustrated and suggested uses only and not intended to guaranty or represent any specific use of space. Furnishings, design features, and decor illustrated are not included with purchase of a Unit. Certain amenities and features may require additional expense by Unit owner. There are water views, but the Condominium is not waterfront, and the views will vary depending on the Unit purchased. No view, water or otherwise, is guaranteed. Consult only the Developer's Prospectus for the Condominium to learn terms, conditions, specifications, estimated costs, Unit views, and to learn what is included with a Unit purchase and how to calculate the Unit size. The balconies depicted are conceptual and the size will vary based on final permitting and completed construction. Pursuant to the license agreement, Developer has the right to use the trade names, marks, images, and logos of Alta Development LLC for so long as the license agreement is not terminated or otherwise lapses.

Developer is not incorporated in, located in, nor a resident of, New York, or residents of any other jurisdiction were permitted by law.  
Reproduction for any use is not authorized. 2024 ALTA SOMI I, LLC. Artist's renderings of development; excludes images of surrounding and neighboring buildings.





# 1. Unit

1. Unit  
2. Unit

3. Unit

4. Unit

5. Unit



Somi Walk (the "Condominium") is developed by ALTA SOMI I, LLC ("Developer") and you should only rely on the Developer's written representations. The illustrations and images are conceptual and may vary from concept to actual construction. The images are examples and do not reflect the design or decor of the completed Condominium. The floor plan, unit layout, locations of windows, floors closets, plumbing fixtures, mechanical equipment, appliances, structural elements, architectural design elements, views, and the uses configurations, and entries to rooms may change based on final approval plans, permitting, and completed construction. The furniture plan and the use of a space illustrated are suggested us only and not intended to guaranty or represent and specific use of space. Furnishings, design features, and decor illustrated and suggested uses only and not intended to guaranty or represent any specific use of space. Furnishings, design features, and decor illustrated are not included with purchase of a Unit. Certain amenities and features may require additional expense by Unit owner. There are water views, but the Condominium is not waterfront, and the views will vary depending on the Unit purchased. No view, water or otherwise, is guaranteed. Consult only the Developer's Prospectus for the Condominium to learn terms, conditions, specifications, estimated costs, Unit views, and to learn what is included with a Unit purchase and how to calculate the Unit size. The balconies depicted are conceptual and the size will vary based on final permitting and completed construction. Pursuant to the license agreement, Developer has the right to use the trade names, marks, images, and logos of Alta Development LLC for so long as the license agreement is not terminated or otherwise lapses.

Developer is not incorporated in, located in, nor a resident of, New York, or residents of any other jurisdiction were permitted by law.  
Reproduction for any use is not authorized. 2024 ALTA SOMI I, LLC. Artist's renderings of development; excludes images of surrounding and neighboring buildings.



# h.eh.

.f q  
.of q

qnf. .eot. d .

nmnT.enh. d .

hŮrn. .ehff. d .



Somi Walk (the "Condominium") is developed by ALTA SOMI I, LLC ("Developer") and you should only rely on the Developer's written representations. The illustrations and images are conceptual and may vary from concept to actual construction. The images are examples and do not reflect the design or decor of the completed Condominium. The floor plan, unit layout, locations of windows, floors closets, plumbing fixtures, mechanical equipment, appliances, structural elements, architectural design elements, views, and the uses configurations, and entries to rooms may change based on final approval plans, permitting, and completed construction. The furniture plan and the use of a space illustrated are suggested us only and not intended to guaranty or represent and specific use of space. Furnishings, design features, and decor illustrated and suggested uses only and not intended to guaranty or represent any specific use of space. Furnishings, design features, and decor illustrated are not included with purchase of a Unit. Certain amenities and features may require additional expense by Unit owner. There are water views, but the Condominium is not waterfront, and the views will vary depending on the Unit purchased. No view, water or otherwise, is guaranteed. Consult only the Developer's Prospectus for the Condominium to learn terms, conditions, specifications, estimated costs, Unit views, and to learn what is included with a Unit purchase and how to calculate the Unit size. The balconies depicted are conceptual and the size will vary based on final permitting and completed construction. Pursuant to the license agreement, Developer has the right to use the trade names, marks, images, and logos of Alta Development LLC for so long as the license agreement is not terminated or otherwise lapses.

Developer is not incorporated in, located in, nor a resident of, New York, or residents of any other jurisdiction were permitted by law.  
Reproduction for any use is not authorized. 2024 ALTA SOMI I, LLC. Artist's renderings of development; excludes images of surrounding and neighboring buildings.



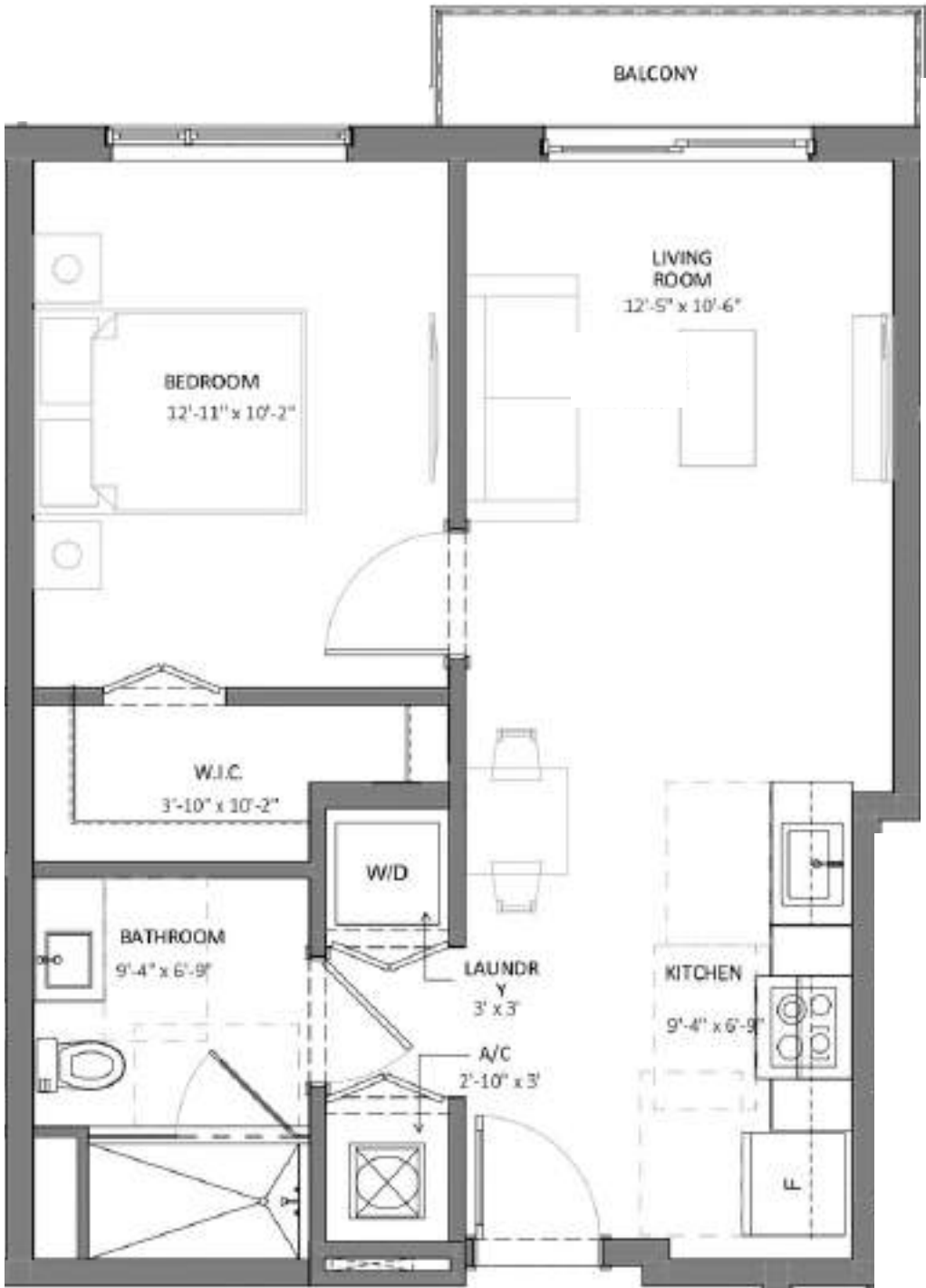
# 1. .hl .

.i s  
.r el q

r ii. .hqr. f .

nr T.hn. f .

r nr. .hq3. f .



Somi Walk (the "Condominium") is developed by ALTA SOMI I, LLC ("Developer") and you should only rely on the Developer's written representations. The illustrations and images are conceptual and may vary from concept to actual construction. The images are examples and do not reflect the design or decor of the completed Condominium. The floor plan, unit layout, locations of windows, floors closets, plumbing fixtures, mechanical equipment, appliances, structural elements, architectural design elements, views, and the uses configurations, and entries to rooms may change based on final approval plans, permitting, and completed construction. The furniture plan and the use of a space illustrated are suggested us only and not intended to guaranty or represent and specific use of space. Furnishings, design features, and decor illustrated and suggested uses only and not intended to guaranty or represent any specific use of space. Furnishings, design features, and decor illustrated are not included with purchase of a Unit. Certain amenities and features may require additional expense by Unit owner. There are water views, but the Condominium is not waterfront, and the views will vary depending on the Unit purchased. No view, water or otherwise, is guaranteed. Consult only the Developer's Prospectus for the Condominium to learn terms, conditions, specifications, estimated costs, Unit views, and to learn what is included with a Unit purchase and how to calculate the Unit size. The balconies depicted are conceptual and the size will vary based on final permitting and completed construction. Pursuant to the license agreement, Developer has the right to use the trade names, marks, images, and logos of Alta Development LLC for so long as the license agreement is not terminated or otherwise lapses.

Developer is not incorporated in, located in, nor a resident of, New York, or residents of any other jurisdiction were permitted by law.  
Reproduction for any use is not authorized. 2024 ALTA SOMI I, LLC. Artist's renderings of development; excludes images of surrounding and neighboring buildings.



h/ /e/h/ /

/f r  
/of r

qff/ /e/oq/ d /

nor T/e/m/ d /

t or/ /e/st/ d /



Somi Walk (the "Condominium") is developed by ALTA SOMI I, LLC ("Developer") and you should only rely on the Developer's written representations. The illustrations and images are conceptual and may vary from concept to actual construction. The images are examples and do not reflect the design or decor of the completed Condominium. The floor plan, unit layout, locations of windows, floors closets, plumbing fixtures, mechanical equipment, appliances, structural elements, architectural design elements, views, and the uses configurations, and entries to rooms may change based on final approval plans, permitting, and completed construction. The furniture plan and the use of a space illustrated are suggested us only and not intended to guaranty or represent and specific use of space. Furnishings, design features, and decor illustrated and suggested uses only and not intended to guaranty or represent any specific use of space. Furnishings, design features, and decor illustrated are not included with purchase of a Unit. Certain amenities and features may require additional expense by Unit owner. There are water views, but the Condominium is not waterfront, and the views will vary depending on the Unit purchased. No view, water or otherwise, is guaranteed. Consult only the Developer's Prospectus for the Condominium to learn terms, conditions, specifications, estimated costs, Unit views, and to learn what is included with a Unit purchase and how to calculate the Unit size. The balconies depicted are conceptual and the size will vary based on final permitting and completed construction. Pursuant to the license agreement, Developer has the right to use the trade names, marks, images, and logos of Alta Development LLC for so long as the license agreement is not terminated or otherwise lapses.

Developer is not incorporated in, located in, nor a resident of, New York, or residents of any other jurisdiction were permitted by law.  
Reproduction for any use is not authorized. 2024 ALTA SOMI I, LLC. Artist's renderings of development; excludes images of surrounding and neighboring buildings.





# 1. .hl .

.i 3  
.qel q

rrm .hrm f .

osT.ho. f .

si 3. .hrr. f .



Somi Walk (the "Condominium") is developed by ALTA SOMI I, LLC ("Developer") and you should only rely on the Developer's written representations. The illustrations and images are conceptual and may vary from concept to actual construction. The images are examples and do not reflect the design or decor of the completed Condominium. The floor plan, unit layout, locations of windows, floors closets, plumbing fixtures, mechanical equipment, appliances, structural elements, architectural design elements, views, and the uses configurations, and entries to rooms may change based on final approval plans, permitting, and completed construction. The furniture plan and the use of a space illustrated are suggested us only and not intended to guaranty or represent and specific use of space. Furnishings, design features, and decor illustrated and suggested uses only and not intended to guaranty or represent any specific use of space. Furnishings, design features, and decor illustrated are not included with purchase of a Unit. Certain amenities and features may require additional expense by Unit owner. There are water views, but the Condominium is not waterfront, and the views will vary depending on the Unit purchased. No view, water or otherwise, is guaranteed. Consult only the Developer's Prospectus for the Condominium to learn terms, conditions, specifications, estimated costs, Unit views, and to learn what is included with a Unit purchase and how to calculate the Unit size. The balconies depicted are conceptual and the size will vary based on final permitting and completed construction. Pursuant to the license agreement, Developer has the right to use the trade names, marks, images, and logos of Alta Development LLC for so long as the license agreement is not terminated or otherwise lapses.

Developer is not incorporated in, located in, nor a resident of, New York, or residents of any other jurisdiction were permitted by law.  
Reproduction for any use is not authorized. 2024 ALTA SOMI I, LLC. Artist's renderings of development; excludes images of surrounding and neighboring buildings.



# 1. .hl .

.li  
.qel q

r3o. .hro. f .

rr. .hr. f .

sri. .hsl. f .

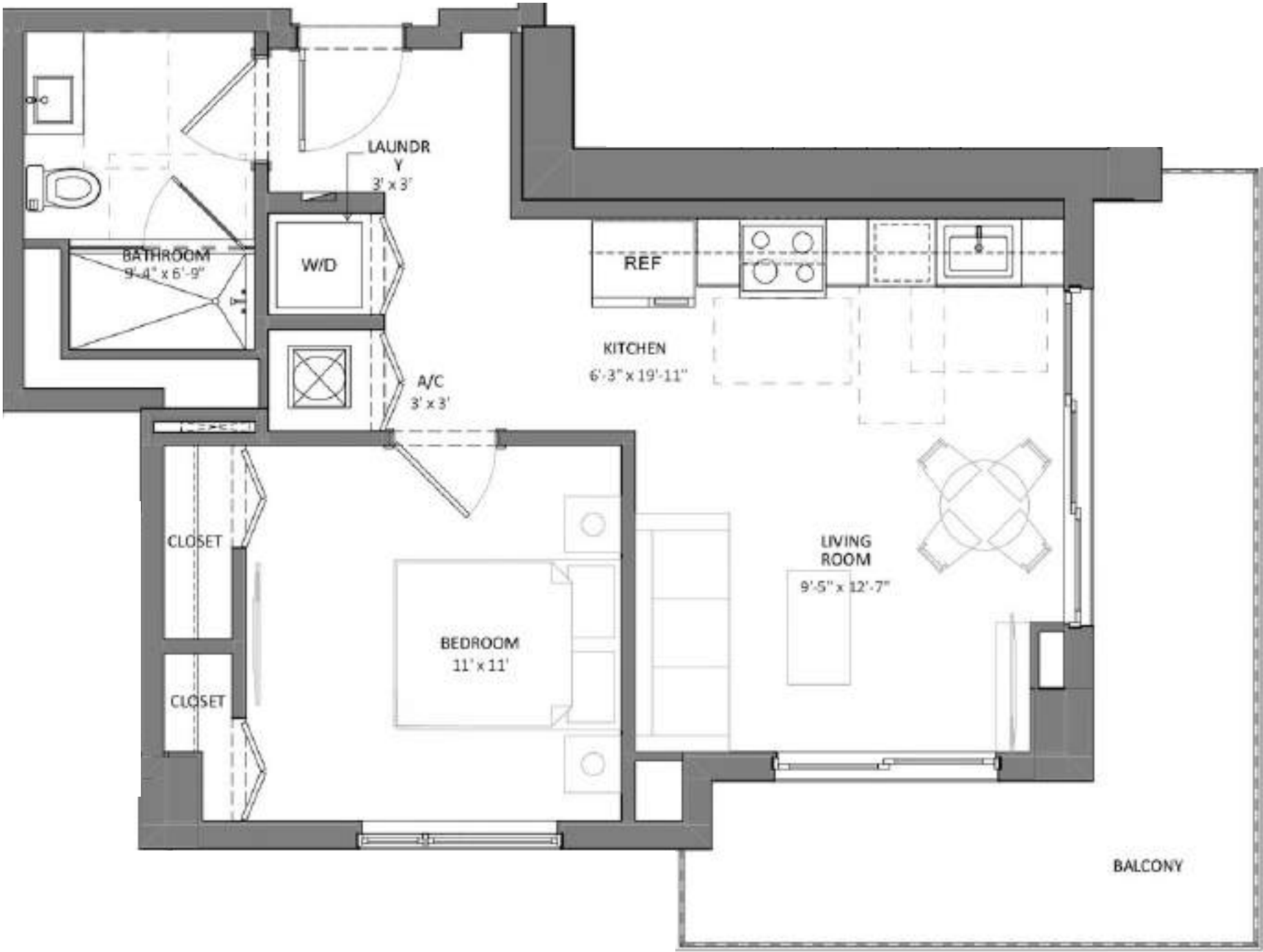


Somi Walk (the "Condominium") is developed by ALTA SOMI I, LLC ("Developer") and you should only rely on the Developer's written representations. The illustrations and images are conceptual and may vary from concept to actual construction. The images are examples and do not reflect the design or decor of the completed Condominium. The floor plan, unit layout, locations of windows, floors closets, plumbing fixtures, mechanical equipment, appliances, structural elements, architectural design elements, views, and the uses configurations, and entries to rooms may change based on final approval plans, permitting, and completed construction. The furniture plan and the use of a space illustrated are suggested us only and not intended to guaranty or represent and specific use of space. Furnishings, design features, and decor illustrated and suggested uses only and not intended to guaranty or represent any specific use of space. Furnishings, design features, and decor illustrated are not included with purchase of a Unit. Certain amenities and features may require additional expense by Unit owner. There are water views, but the Condominium is not waterfront, and the views will vary depending on the Unit purchased. No view, water or otherwise, is guaranteed. Consult only the Developer's Prospectus for the Condominium to learn terms, conditions, specifications, estimated costs, Unit views, and to learn what is included with a Unit purchase and how to calculate the Unit size. The balconies depicted are conceptual and the size will vary based on final permitting and completed construction. Pursuant to the license agreement, Developer has the right to use the trade names, marks, images, and logos of Alta Development LLC for so long as the license agreement is not terminated or otherwise lapses.



# 1. .hl .

.lo  
.sed q  
q3s. .hq q. f .  
l si T.hlr. f .  
srt. .hsl. f .



Somi Walk (the "Condominium") is developed by ALTA SOMI I, LLC ("Developer") and you should only rely on the Developer's written representations. The illustrations and images are conceptual and may vary from concept to actual construction. The images are examples and do not reflect the design or decor of the completed Condominium. The floor plan, unit layout, locations of windows, floors closets, plumbing fixtures, mechanical equipment, appliances, structural elements, architectural design elements, views, and the uses configurations, and entries to rooms may change based on final approval plans, permitting, and completed construction. The furniture plan and the use of a space illustrated are suggested us only and not intended to guaranty or represent and specific use of space. Furnishings, design features, and decor illustrated and suggested uses only and not intended to guaranty or represent any specific use of space. Furnishings, design features, and decor illustrated are not included with purchase of a Unit. Certain amenities and features may require additional expense by Unit owner. There are water views, but the Condominium is not waterfront, and the views will vary depending on the Unit purchased. No view, water or otherwise, is guaranteed. Consult only the Developer's Prospectus for the Condominium to learn terms, conditions, specifications, estimated costs, Unit views, and to learn what is included with a Unit purchase and how to calculate the Unit size. The balconies depicted are conceptual and the size will vary based on final permitting and completed construction. Pursuant to the license agreement, Developer has the right to use the trade names, marks, images, and logos of Alta Development LLC for so long as the license agreement is not terminated or otherwise lapses.

Developer is not incorporated in, located in, nor a resident of, New York, or residents of any other jurisdiction were permitted by law.  
Reproduction for any use is not authorized. 2024 ALTA SOMI I, LLC. Artist's renderings of development; excludes images of surrounding and neighboring buildings.



# 1. .hl .

.l q  
.s el q

rlm .hqs. f .

rrT.hr. f .

rst. .hrn. f .



Somi Walk (the "Condominium") is developed by ALTA SOMI I, LLC ("Developer") and you should only rely on the Developer's written representations. The illustrations and images are conceptual and may vary from concept to actual construction. The images are examples and do not reflect the design or decor of the completed Condominium. The floor plan, unit layout, locations of windows, floors closets, plumbing fixtures, mechanical equipment, appliances, structural elements, architectural design elements, views, and the uses configurations, and entries to rooms may change based on final approval plans, permitting, and completed construction. The furniture plan and the use of a space illustrated are suggested us only and not intended to guaranty or represent and specific use of space. Furnishings, design features, and decor illustrated and suggested uses only and not intended to guaranty or represent any specific use of space. Furnishings, design features, and decor illustrated are not included with purchase of a Unit. Certain amenities and features may require additional expense by Unit owner. There are water views, but the Condominium is not waterfront, and the views will vary depending on the Unit purchased. No view, water or otherwise, is guaranteed. Consult only the Developer's Prospectus for the Condominium to learn terms, conditions, specifications, estimated costs, Unit views, and to learn what is included with a Unit purchase and how to calculate the Unit size. The balconies depicted are conceptual and the size will vary based on final permitting and completed construction. Pursuant to the license agreement, Developer has the right to use the trade names, marks, images, and logos of Alta Development LLC for so long as the license agreement is not terminated or otherwise lapses.





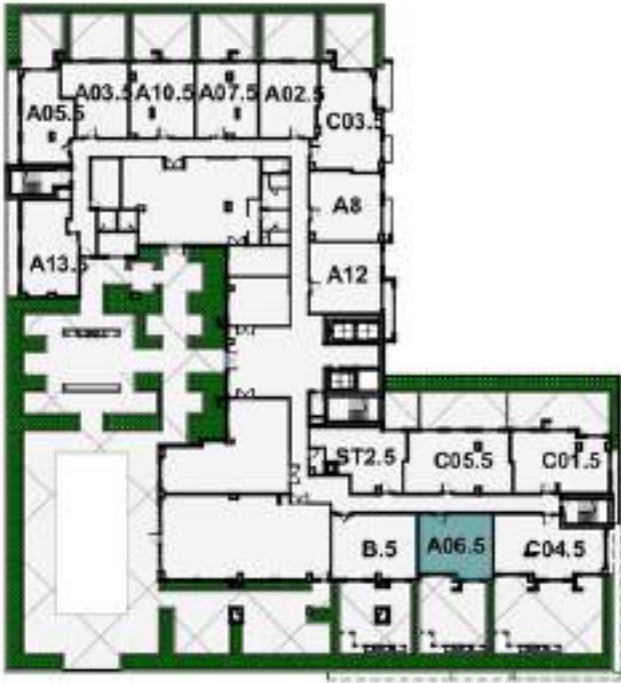
h/ /e/h/ /

/ho /oho

qi o/ /ɛos/ d /

qr t T/ɛqm/ d /

hnf n/ /ɛhi h/ d /



Somi Walk (the "Condominium") is developed by ALTA SOMI I, LLC ("Developer") and you should only rely on the Developer's written representations. The illustrations and images are conceptual and may vary from concept to actual construction. The images are examples and do not reflect the design or decor of the completed Condominium. The floor plan, unit layout, locations of windows, floors closets, plumbing fixtures, mechanical equipment, appliances, structural elements, architectural design elements, views, and the uses configurations, and entries to rooms may change based on final approval plans, permitting, and completed construction. The furniture plan and the use of a space illustrated are suggested us only and not intended to guaranty or represent and specific use of space. Furnishings, design features, and decor illustrated and suggested uses only and not intended to guaranty or represent any specific use of space. Furnishings, design features, and decor illustrated are not included with purchase of a Unit. Certain amenities and features may require additional expense by Unit owner. There are water views, but the Condominium is not waterfront, and the views will vary depending on the Unit purchased. No view, water or otherwise, is guaranteed. Consult only the Developer's Prospectus for the Condominium to learn terms, conditions, specifications, estimated costs, Unit views, and to learn what is included with a Unit purchase and how to calculate the Unit size. The balconies depicted are conceptual and the size will vary based on final permitting and completed construction. Pursuant to the license agreement, Developer has the right to use the trade names, marks, images, and logos of Alta Development LLC for so long as the license agreement is not terminated or otherwise lapses.



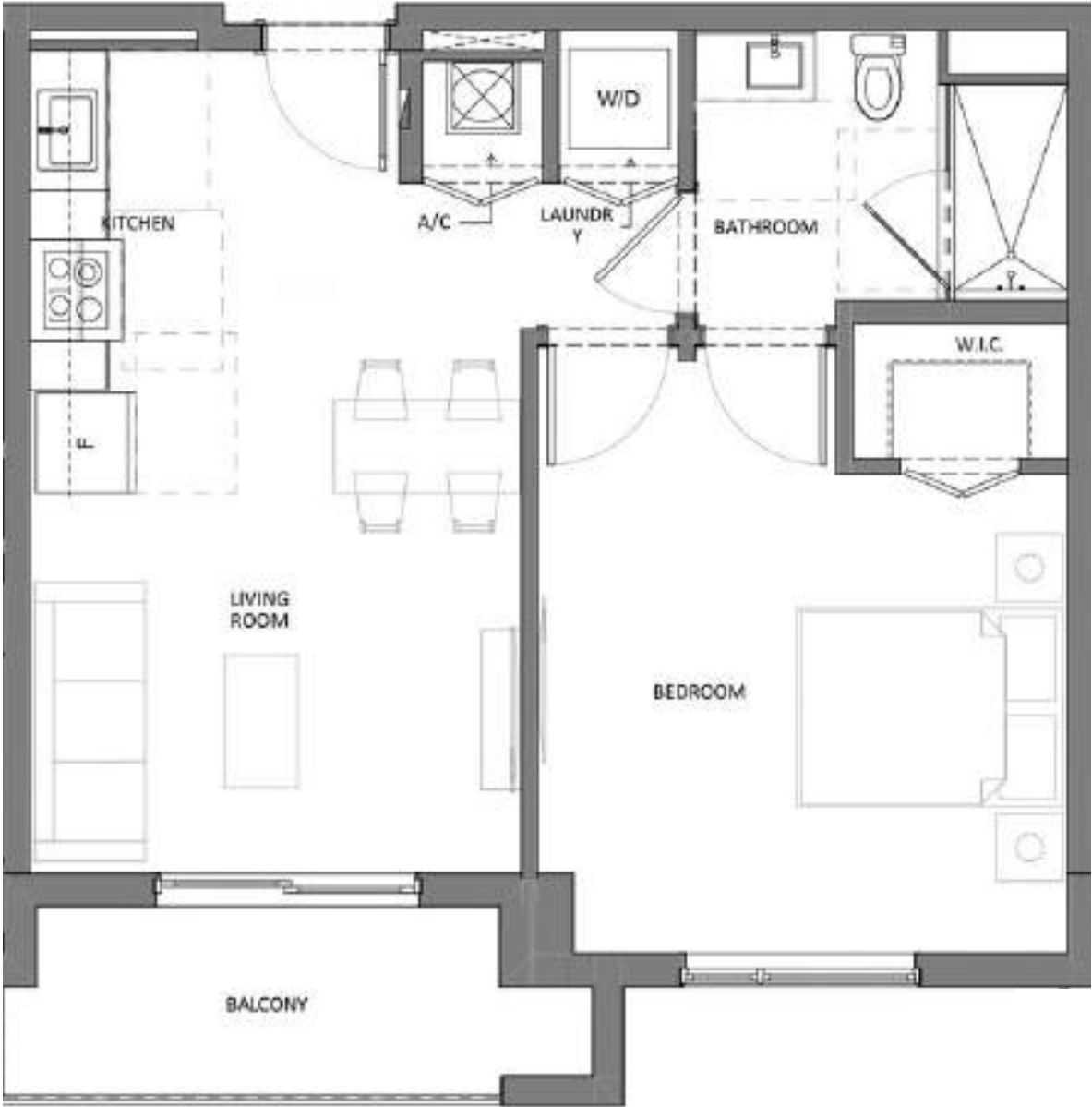
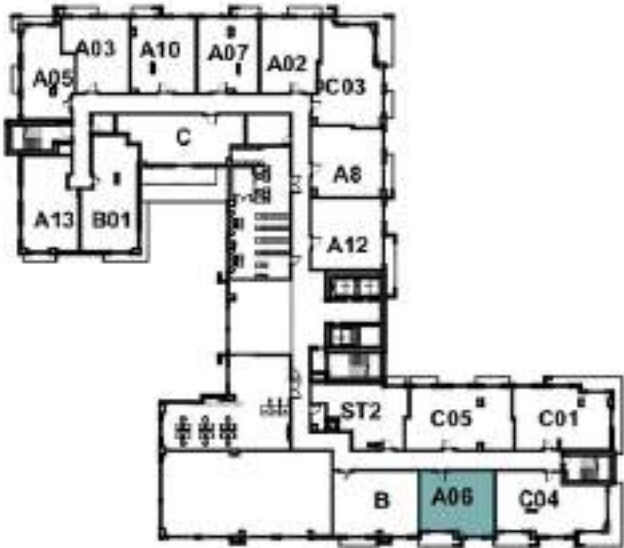
h/ /e/h/ /

/ho  
/qho

qi o/ /qos/ d /

rfT/q/ d /

qt o/ /qo/ d /



Somi Walk (the "Condominium") is developed by ALTA SOMI I, LLC ("Developer") and you should only rely on the Developer's written representations. The illustrations and images are conceptual and may vary from concept to actual construction. The images are examples and do not reflect the design or decor of the completed Condominium. The floor plan, unit layout, locations of windows, floors closets, plumbing fixtures, mechanical equipment, appliances, structural elements, architectural design elements, views, and the uses configurations, and entries to rooms may change based on final approval plans, permitting, and completed construction. The furniture plan and the use of a space illustrated are suggested us only and not intended to guaranty or represent and specific use of space. Furnishings, design features, and decor illustrated and suggested uses only and not intended to guaranty or represent any specific use of space. Furnishings, design features, and decor illustrated are not included with purchase of a Unit. Certain amenities and features may require additional expense by Unit owner. There are water views, but the Condominium is not waterfront, and the views will vary depending on the Unit purchased. No view, water or otherwise, is guaranteed. Consult only the Developer's Prospectus for the Condominium to learn terms, conditions, specifications, estimated costs, Unit views, and to learn what is included with a Unit purchase and how to calculate the Unit size. The balconies depicted are conceptual and the size will vary based on final permitting and completed construction. Pursuant to the license agreement, Developer has the right to use the trade names, marks, images, and logos of Alta Development LLC for so long as the license agreement is not terminated or otherwise lapses.



# 1. .hl .

.l r  
.s el q

rii. .hqr. f .

rnT.hr. f .

rrn. .hrm f .



Somi Walk (the "Condominium") is developed by ALTA SOMI I, LLC ("Developer") and you should only rely on the Developer's written representations. The illustrations and images are conceptual and may vary from concept to actual construction. The images are examples and do not reflect the design or decor of the completed Condominium. The floor plan, unit layout, locations of windows, floors closets, plumbing fixtures, mechanical equipment, appliances, structural elements, architectural design elements, views, and the uses configurations, and entries to rooms may change based on final approval plans, permitting, and completed construction. The furniture plan and the use of a space illustrated are suggested us only and not intended to guaranty or represent and specific use of space. Furnishings, design features, and decor illustrated and suggested uses only and not intended to guaranty or represent any specific use of space. Furnishings, design features, and decor illustrated are not included with purchase of a Unit. Certain amenities and features may require additional expense by Unit owner. There are water views, but the Condominium is not waterfront, and the views will vary depending on the Unit purchased. No view, water or otherwise, is guaranteed. Consult only the Developer's Prospectus for the Condominium to learn terms, conditions, specifications, estimated costs, Unit views, and to learn what is included with a Unit purchase and how to calculate the Unit size. The balconies depicted are conceptual and the size will vary based on final permitting and completed construction. Pursuant to the license agreement, Developer has the right to use the trade names, marks, images, and logos of Alta Development LLC for so long as the license agreement is not terminated or otherwise lapses.



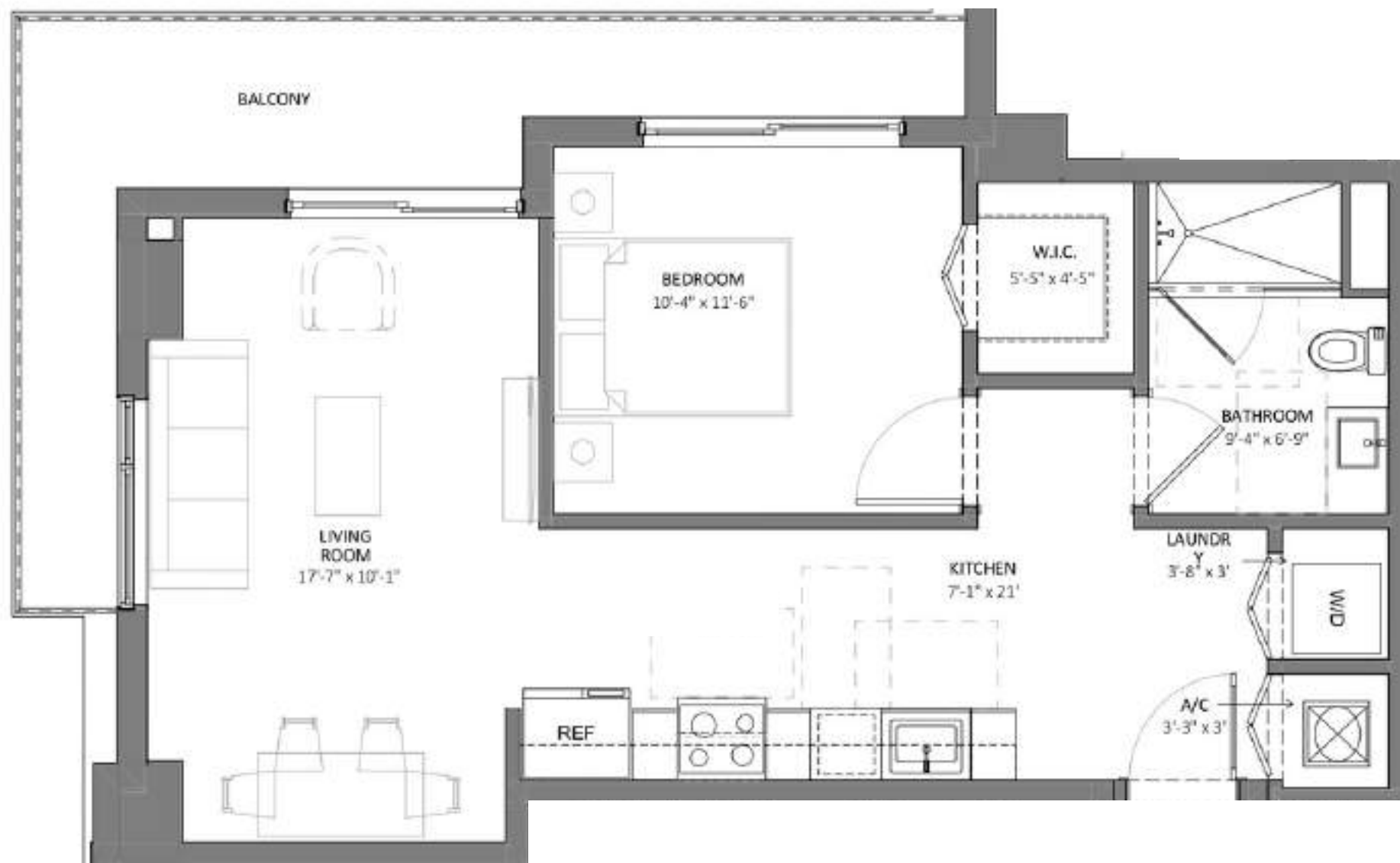
# 1. .hl .

.mi  
.s el q

rq3. .hrl. f .

l mq. .hl m f .

sto. .hs n. f .



Somi Walk (the "Condominium") is developed by ALTA SOMI I, LLC ("Developer") and you should only rely on the Developer's written representations. The illustrations and images are conceptual and may vary from concept to actual construction. The images are examples and do not reflect the design or decor of the completed Condominium. The floor plan, unit layout, locations of windows, floors closets, plumbing fixtures, mechanical equipment, appliances, structural elements, architectural design elements, views, and the uses configurations, and entries to rooms may change based on final approval plans, permitting, and completed construction. The furniture plan and the use of a space illustrated are suggested us only and not intended to guaranty or represent and specific use of space. Furnishings, design features, and decor illustrated and suggested uses only and not intended to guaranty or represent any specific use of space. Furnishings, design features, and decor illustrated are not included with purchase of a Unit. Certain amenities and features may require additional expense by Unit owner. There are water views, but the Condominium is not waterfront, and the views will vary depending on the Unit purchased. No view, water or otherwise, is guaranteed. Consult only the Developer's Prospectus for the Condominium to learn terms, conditions, specifications, estimated costs, Unit views, and to learn what is included with a Unit purchase and how to calculate the Unit size. The balconies depicted are conceptual and the size will vary based on final permitting and completed construction. Pursuant to the license agreement, Developer has the right to use the trade names, marks, images, and logos of Alta Development LLC for so long as the license agreement is not terminated or otherwise lapses.

Developer is not incorporated in, located in, nor a resident of, New York, or residents of any other jurisdiction were permitted by law.  
Reproduction for any use is not authorized. 2024 ALTA SOMI I, LLC. Artist's renderings of development; excludes images of surrounding and neighboring buildings.





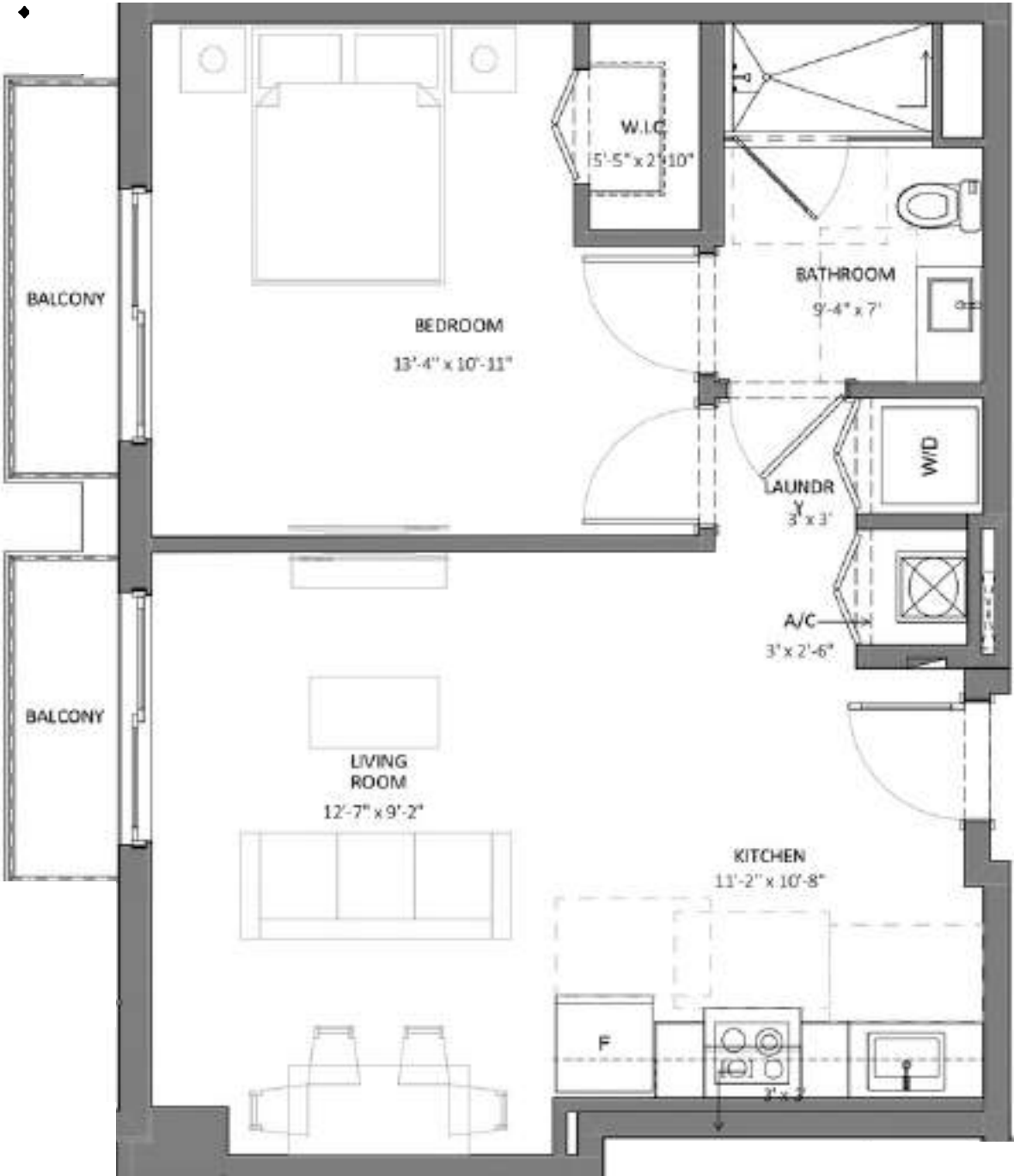
# 1. .hl .

.m  
.s el q

r so. .hr n. f .

qs. .hq. f .

s nl. .hr t. f .



Somi Walk (the "Condominium") is developed by ALTA SOMI I, LLC ("Developer") and you should only rely on the Developer's written representations. The illustrations and images are conceptual and may vary from concept to actual construction. The images are examples and do not reflect the design or decor of the completed Condominium. The floor plan, unit layout, locations of windows, floors closets, plumbing fixtures, mechanical equipment, appliances, structural elements, architectural design elements, views, and the uses configurations, and entries to rooms may change based on final approval plans, permitting, and completed construction. The furniture plan and the use of a space illustrated are suggested us only and not intended to guaranty or represent and specific use of space. Furnishings, design features, and decor illustrated and suggested uses only and not intended to guaranty or represent any specific use of space. Furnishings, design features, and decor illustrated are not included with purchase of a Unit. Certain amenities and features may require additional expense by Unit owner. There are water views, but the Condominium is not waterfront, and the views will vary depending on the Unit purchased. No view, water or otherwise, is guaranteed. Consult only the Developer's Prospectus for the Condominium to learn terms, conditions, specifications, estimated costs, Unit views, and to learn what is included with a Unit purchase and how to calculate the Unit size. The balconies depicted are conceptual and the size will vary based on final permitting and completed construction. Pursuant to the license agreement, Developer has the right to use the trade names, marks, images, and logos of Alta Development LLC for so long as the license agreement is not terminated or otherwise lapses.



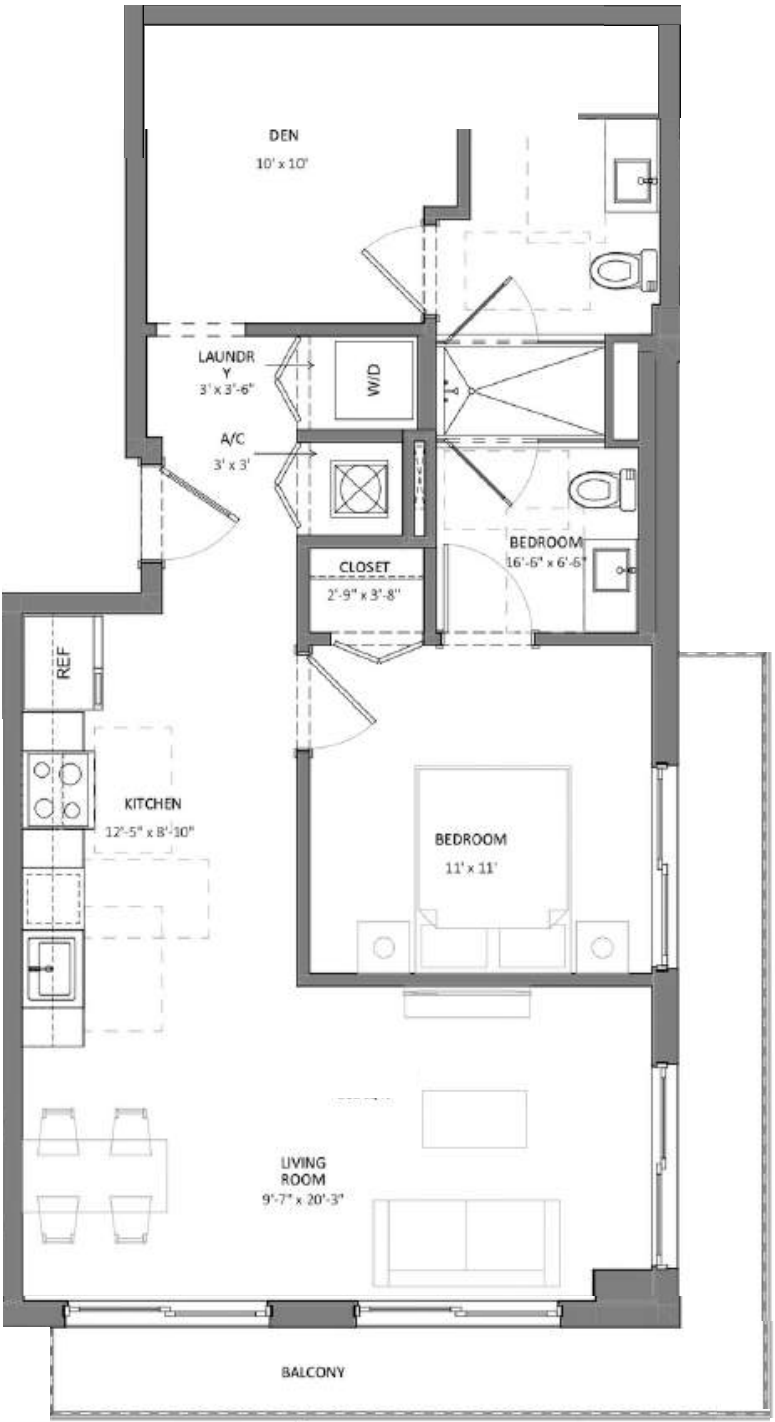
# Unit B-01

Developer  
Name

Owner's Name

Owner's Address

Owner's Phone



Somi Walk (the "Condominium") is developed by ALTA SOMI I, LLC ("Developer") and you should only rely on the Developer's written representations. The illustrations and images are conceptual and may vary from concept to actual construction. The images are examples and do not reflect the design or decor of the completed Condominium. The floor plan, unit layout, locations of windows, floors closets, plumbing fixtures, mechanical equipment, appliances, structural elements, architectural design elements, views, and the uses configurations, and entries to rooms may change based on final approval plans, permitting, and completed construction. The furniture plan and the use of a space illustrated are suggested us only and not intended to guaranty or represent and specific use of space. Furnishings, design features, and decor illustrated and suggested uses only and not intended to guaranty or represent any specific use of space. Furnishings, design features, and decor illustrated are not included with purchase of a Unit. Certain amenities and features may require additional expense by Unit owner. There are water views, but the Condominium is not waterfront, and the views will vary depending on the Unit purchased. No view, water or otherwise, is guaranteed. Consult only the Developer's Prospectus for the Condominium to learn terms, conditions, specifications, estimated costs, Unit views, and to learn what is included with a Unit purchase and how to calculate the Unit size. The balconies depicted are conceptual and the size will vary based on final permitting and completed construction. Pursuant to the license agreement, Developer has the right to use the trade names, marks, images, and logos of Alta Development LLC for so long as the license agreement is not terminated or otherwise lapses.

Developer is not incorporated in, located in, nor a resident of, New York, or residents of any other jurisdiction were permitted by law.

Reproduction for any use is not authorized. 2024 ALTA SOMI I, LLC. Artist's renderings of development; excludes images of surrounding and neighboring buildings.



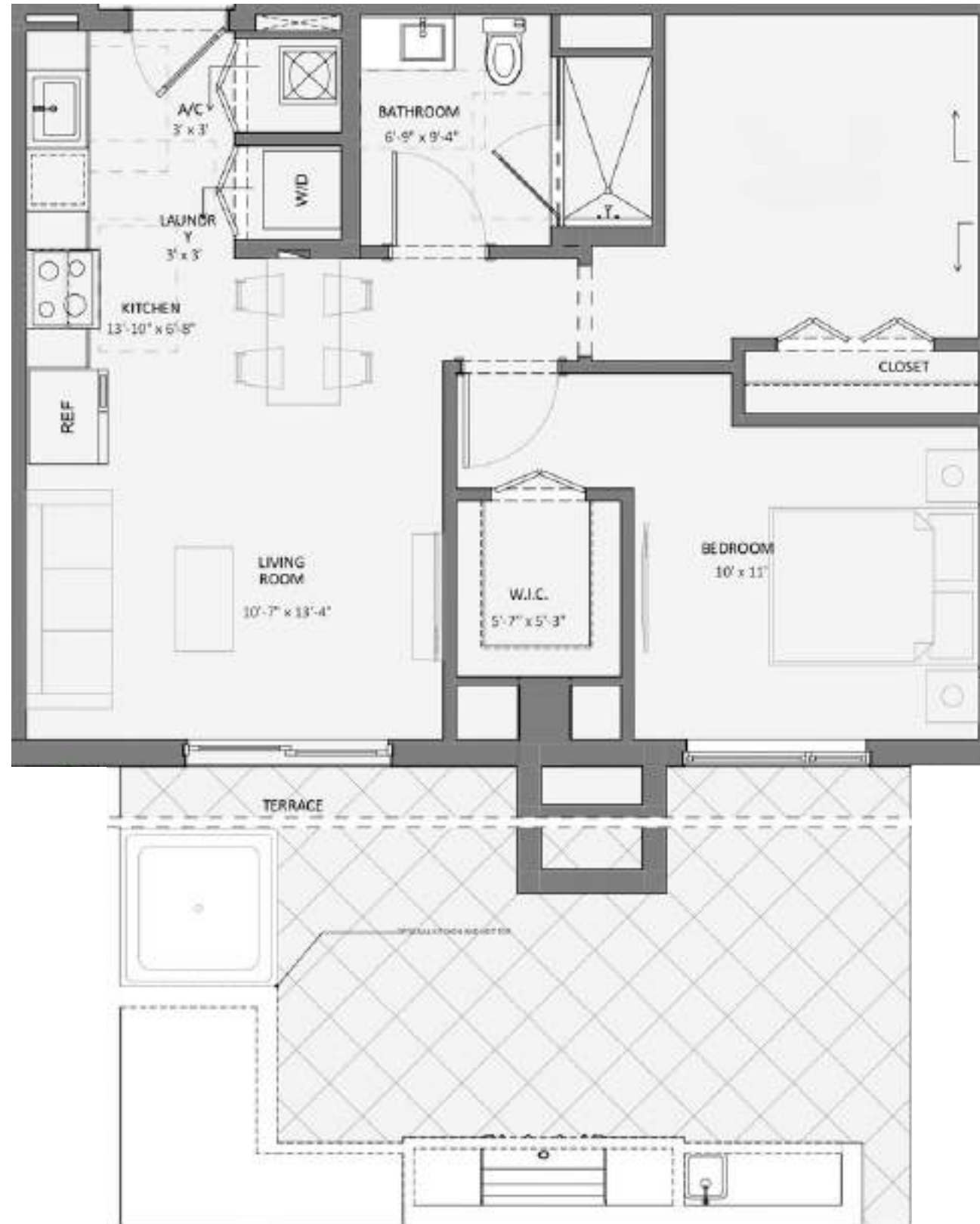
f. .df. .D. .

.fq  
.nfq

sqn. .dsf. a .

qet. .dns. a .

fisi. .dfht. a .



Somi Walk (the "Condominium") is developed by ALTA SOMI I, LLC ("Developer") and you should only rely on the Developer's written representations. The illustrations and images are conceptual and may vary from concept to actual construction. The images are examples and do not reflect the design or decor of the completed Condominium. The floor plan, unit layout, locations of windows, floors closets, plumbing fixtures, mechanical equipment, appliances, structural elements, architectural design elements, views, and the uses configurations, and entries to rooms may change based on final approval plans, permitting, and completed construction. The furniture plan and the use of a space illustrated are suggested us only and not intended to guaranty or represent and specific use of space. Furnishings, design features, and decor illustrated and suggested uses only and not intended to guaranty or represent any specific use of space. Furnishings, design features, and decor illustrated are not included with purchase of a Unit. Certain amenities and features may require additional expense by Unit owner. There are water views, but the Condominium is not waterfront, and the views will vary depending on the Unit purchased. Consult only the Developer's Prospectus for the Condominium to learn terms, conditions, specifications, estimated costs, Unit views, and to learn what is included with a Unit purchase and how to calculate the Unit size. The balconies depicted are conceptual and the size will vary based on final permitting and completed construction. Pursuant to the license agreement, Developer has the right to use the trade names, marks, images, and logos of Alta Development LLC for so long as the license agreement is not terminated or otherwise lapses.



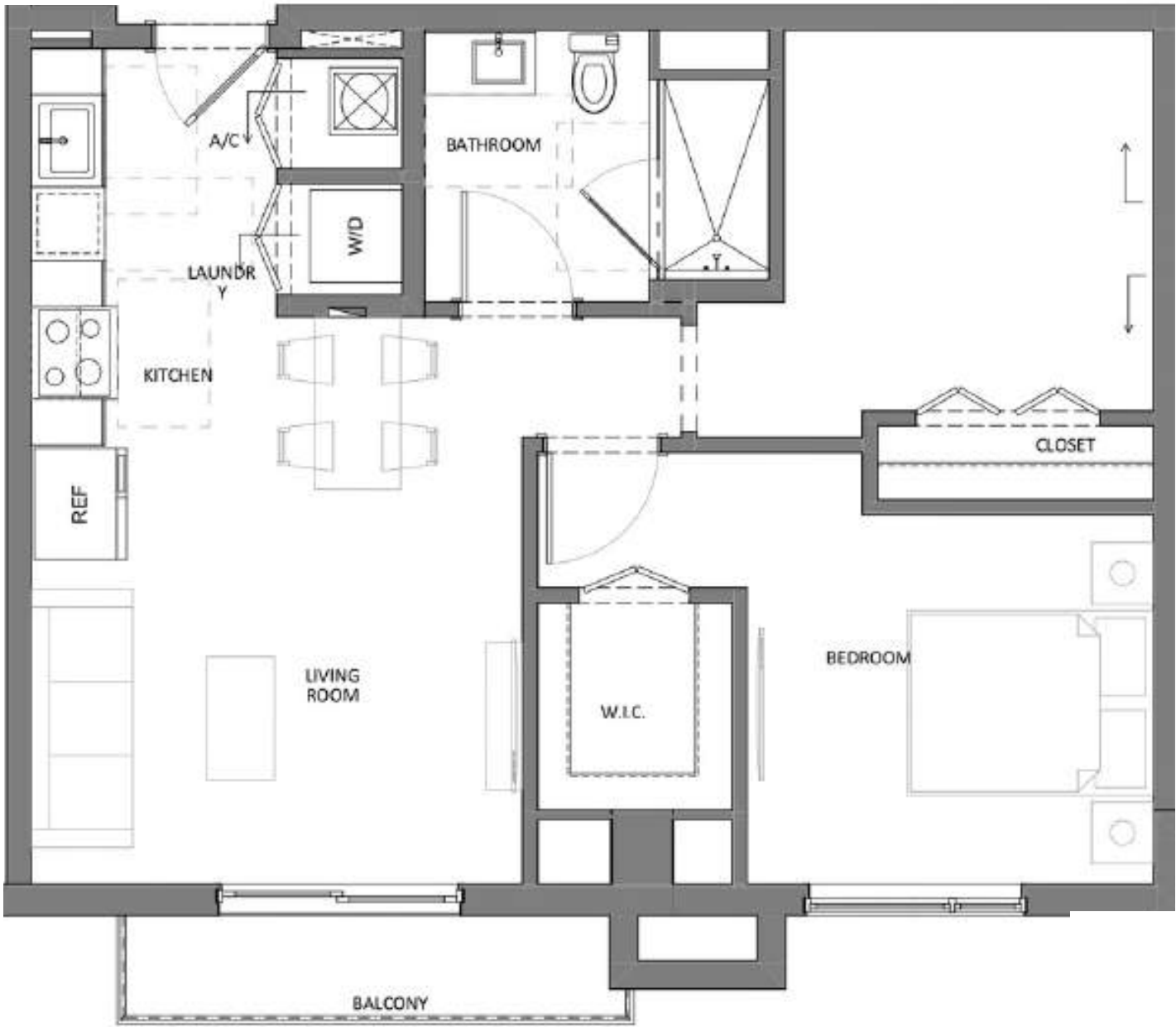
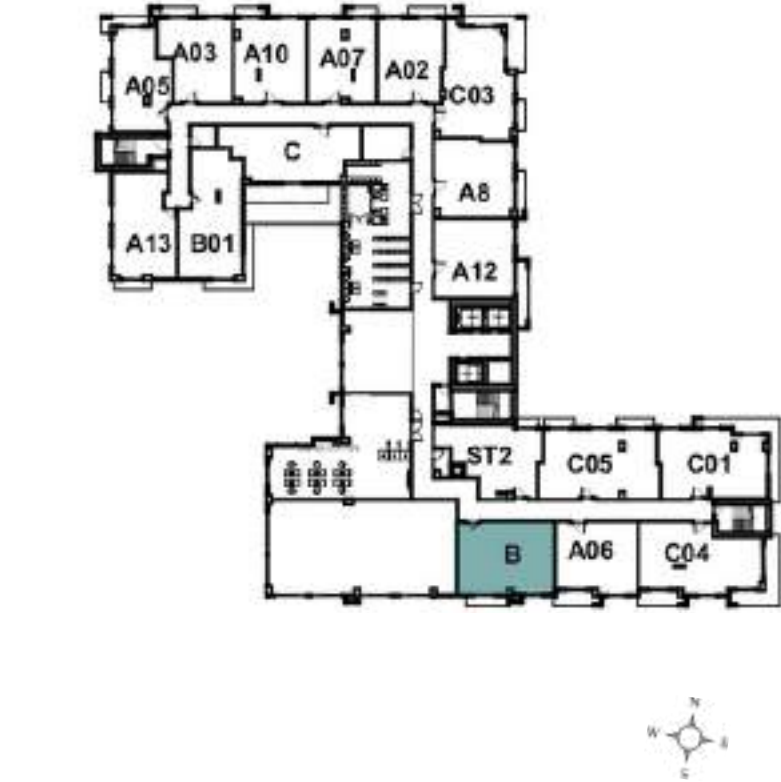
# Unit 1010 Floor Plan

1010 sq. ft.  
1010 sq. ft.

1010 sq. ft. a .

1010 sq. ft. a .

1010 sq. ft. a .



Somi Walk (the "Condominium") is developed by ALTA SOMI I, LLC ("Developer") and you should only rely on the Developer's written representations. The illustrations and images are conceptual and may vary from concept to actual construction. The images are examples and do not reflect the design or decor of the completed Condominium. The floor plan, unit layout, locations of windows, floors closets, plumbing fixtures, mechanical equipment, appliances, structural elements, architectural design elements, views, and the uses configurations, and entries to rooms may change based on final approval plans, permitting, and completed construction. The furniture plan and the use of a space illustrated are suggested us only and not intended to guaranty or represent and specific use of space. Furnishings, design features, and decor illustrated and suggested uses only and not intended to guaranty or represent any specific use of space. Furnishings, design features, and decor illustrated are not included with purchase of a Unit. Certain amenities and features may require additional expense by Unit owner. There are water views, but the Condominium is not waterfront, and the views will vary depending on the Unit purchased. No view, water or otherwise, is guaranteed. Consult only the Developer's Prospectus for the Condominium to learn terms, conditions, specifications, estimated costs, Unit views, and to learn what is included with a Unit purchase and how to calculate the Unit size. The balconies depicted are conceptual and the size will vary based on final permitting and completed construction. Pursuant to the license agreement, Developer has the right to use the trade names, marks, images, and logos of Alta Development LLC for so long as the license agreement is not terminated or otherwise lapses.





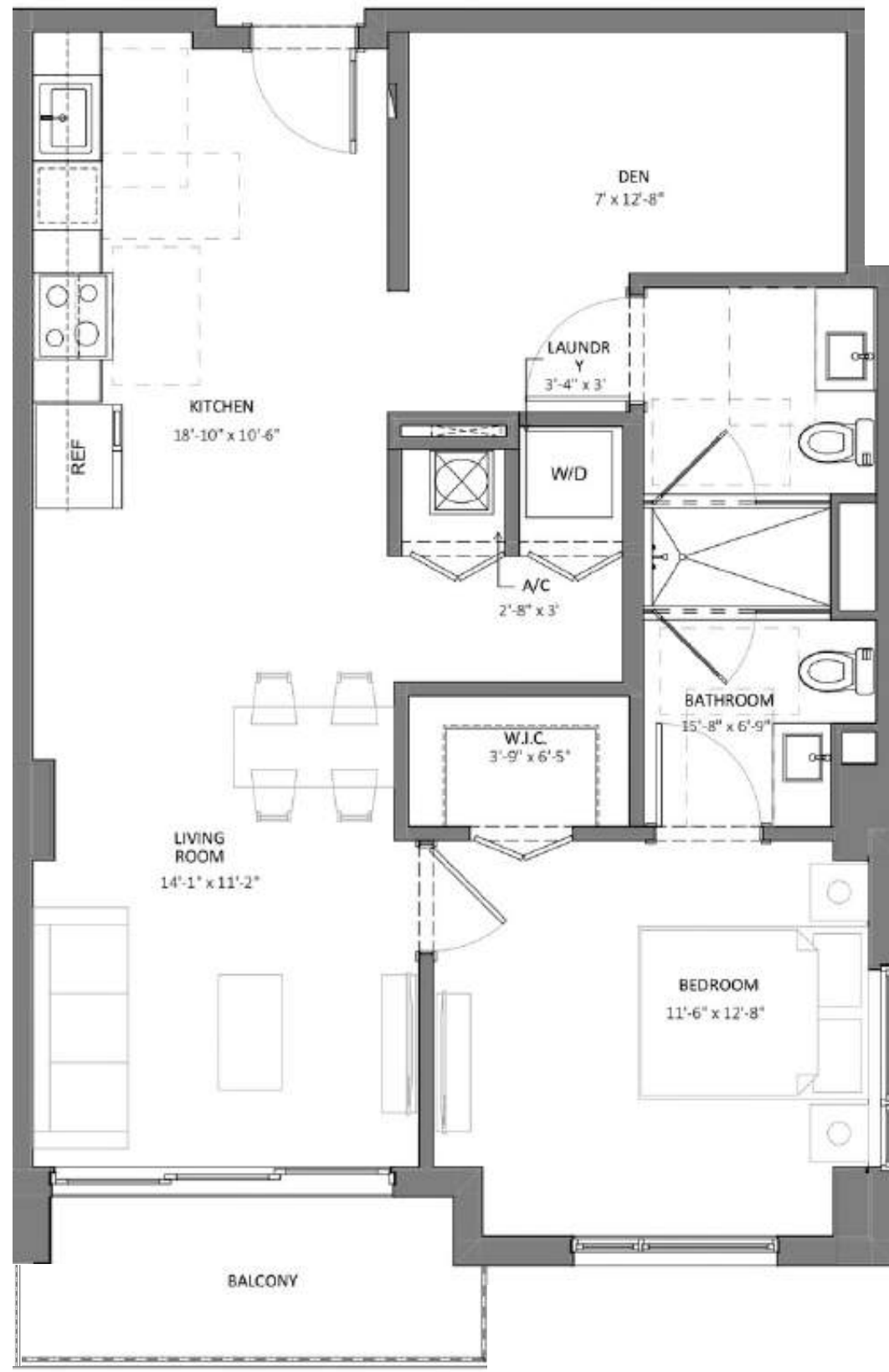
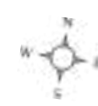
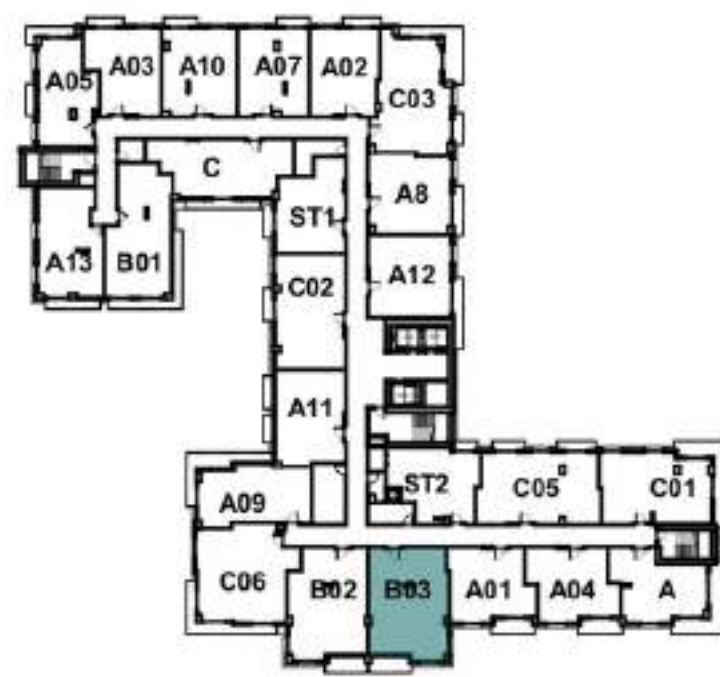
# en - nFel

en - nFel

onf - aoe - L -

nf - am - L -

qhi - aon - L -



Somi Walk (the "Condominium") is developed by ALTA SOMI I, LLC ("Developer") and you should only rely on the Developer's written representations. The illustrations and images are conceptual and may vary from concept to actual construction. The images are examples and do not reflect the design or decor of the completed Condominium. The floor plan, unit layout, locations of windows, floors closets, plumbing fixtures, mechanical equipment, appliances, structural elements, architectural design elements, views, and the uses configurations, and entries to rooms may change based on final approval plans, permitting, and completed construction. The furniture plan and the use of a space illustrated are suggested us only and not intended to guaranty or represent and specific use of space. Furnishings, design features, and decor illustrated and suggested uses only and not intended to guaranty or represent any specific use of space. Furnishings, design features, and decor illustrated are not included with purchase of a Unit. Certain amenities and features may require additional expense by Unit owner. There are water views, but the Condominium is not waterfront, and the views will vary depending on the Unit purchased. No view, water or otherwise, is guaranteed. Consult only the Developer's Prospectus for the Condominium to learn terms, conditions, specifications, estimated costs, Unit views, and to learn what is included with a Unit purchase and how to calculate the Unit size. The balconies depicted are conceptual and the size will vary based on final permitting and completed construction. Pursuant to the license agreement, Developer has the right to use the trade names, marks, images, and logos of Alta Development LLC for so long as the license agreement is not terminated or otherwise lapses.

Developer is not incorporated in, located in, nor a resident of, New York, or residents of any other jurisdiction were permitted by law.  
Reproduction for any use is not authorized. 2024 ALTA SOMI I, LLC. Artist's renderings of development; excludes images of surrounding and neighboring buildings.



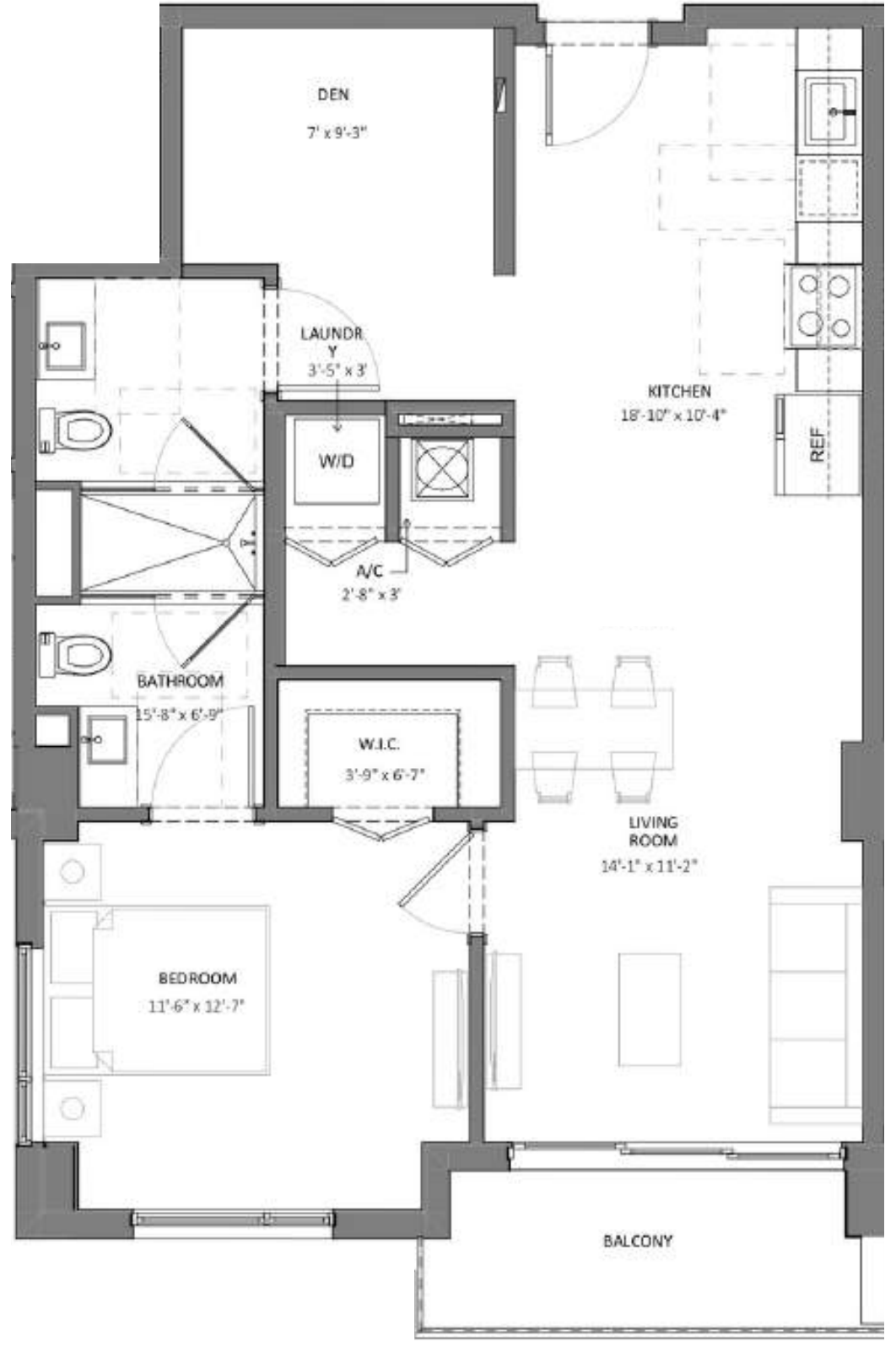
# Unit B-2

Unit  
B-2

Unit  
B-2

Unit  
B-2

Unit  
B-2



Somi Walk (the "Condominium") is developed by ALTA SOMI I, LLC ("Developer") and you should only rely on the Developer's written representations. The illustrations and images are conceptual and may vary from concept to actual construction. The images are examples and do not reflect the design or decor of the completed Condominium. The floor plan, unit layout, locations of windows, floors closets, plumbing fixtures, mechanical equipment, appliances, structural elements, architectural design elements, views, and the uses configurations, and entries to rooms may change based on final approval plans, permitting, and completed construction. The furniture plan and the use of a space illustrated are suggested us only and not intended to guaranty or represent and specific use of space. Furnishings, design features, and decor illustrated and suggested uses only and not intended to guaranty or represent any specific use of space. Furnishings, design features, and decor illustrated are not included with purchase of a Unit. Certain amenities and features may require additional expense by Unit owner. There are water views, but the Condominium is not waterfront, and the views will vary depending on the Unit purchased. No view, water or otherwise, is guaranteed. Consult only the Developer's Prospectus for the Condominium to learn terms, conditions, specifications, estimated costs, Unit views, and to learn what is included with a Unit purchase and how to calculate the Unit size. The balconies depicted are conceptual and the size will vary based on final permitting and completed construction. Pursuant to the license agreement, Developer has the right to use the trade names, marks, images, and logos of Alta Development LLC for so long as the license agreement is not terminated or otherwise lapses.



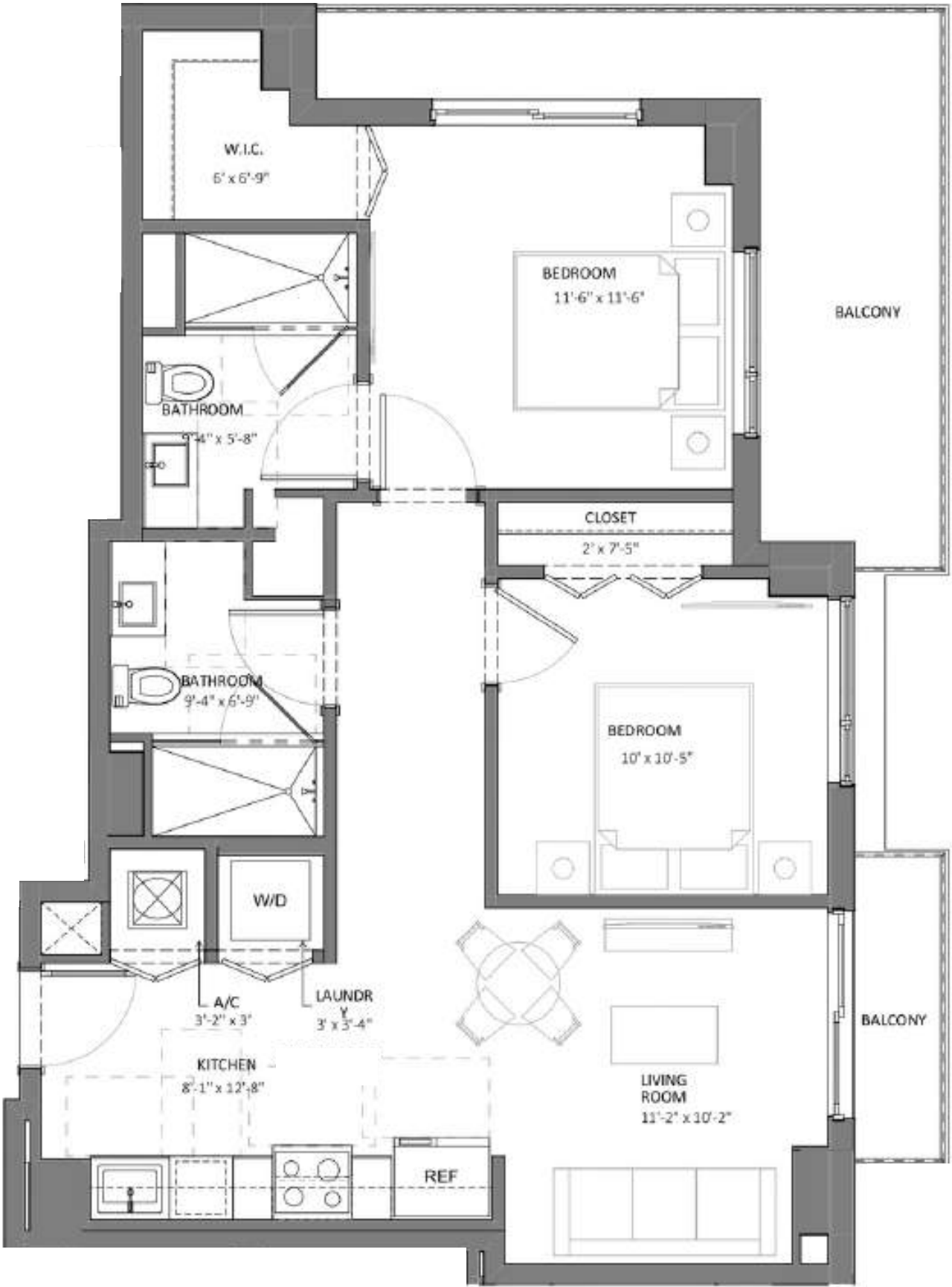
# floor plan

1st floor

2nd floor

3rd floor

4th floor



SOMI WALK  
RESIDENCES

Somi Walk (the "Condominium") is developed by ALTA SOMI I, LLC ("Developer") and you should only rely on the Developer's written representations. The illustrations and images are conceptual and may vary from concept to actual construction. The images are examples and do not reflect the design or decor of the completed Condominium. The floor plan, unit layout, locations of windows, floors closets, plumbing fixtures, mechanical equipment, appliances, structural elements, architectural design elements, views, and the uses configurations, and entries to rooms may change based on final approval plans, permitting, and completed construction. The furniture plan and the use of a space illustrated are suggested us only and not intended to guaranty or represent and specific use of space. Furnishings, design features, and decor illustrated and suggested uses only and not intended to guaranty or represent any specific use of space. Furnishings, design features, and decor illustrated are not included with purchase of a Unit. Certain amenities and features may require additional expense by Unit owner. There are water views, but the Condominium is not waterfront, and the views will vary depending on the Unit purchased. No view, water or otherwise, is guaranteed. Consult only the Developer's Prospectus for the Condominium to learn terms, conditions, specifications, estimated costs, Unit views, and to learn what is included with a Unit purchase and how to calculate the Unit size. The balconies depicted are conceptual and the size will vary based on final permitting and completed construction. Pursuant to the license agreement, Developer has the right to use the trade names, marks, images, and logos of Alta Development LLC for so long as the license agreement is not terminated or otherwise lapses.

Developer is not incorporated in, located in, nor a resident of, New York, or residents of any other jurisdiction were permitted by law. Reproduction for any use is not authorized. 2024 ALTA SOMI I, LLC. Artist's renderings of development; excludes images of surrounding and neighboring buildings.



m

◆



SOMI WALK  
RESIDENCES

.f t

.qf t

t no. .ess. d .

r ir. .eqs. d .

i loqf. .ei nq. d .



Somi Walk (the "Condominium") is developed by ALTA SOMI I, LLC ("Developer") and you should only rely on the Developer's written representations. The illustrations and images are conceptual and may vary from concept to actual construction. The images are examples and do not reflect the design or decor of the completed Condominium. The floor plan, unit layout, locations of windows, floors closets, plumbing fixtures, mechanical equipment, appliances, structural elements, architectural design elements, views, and the uses configurations, and entries to rooms may change based on final approval plans, permitting, and completed construction. The furniture plan and the use of a space illustrated are suggested us only and not intended to guaranty or represent and specific use of space. Furnishings, design features, and decor illustrated and suggested uses only and not intended to guaranty or represent any specific use of space. Furnishings, design features, and decor illustrated are not included with purchase of a Unit. Certain amenities and features may require additional expense by Unit owner. There are water views, but the Condominium is not waterfront, and the views will vary depending on the Unit purchased. No view, water or otherwise, is guaranteed. Consult only the Developer's Prospectus for the Condominium to learn terms, conditions, specifications, estimated costs, Unit views, and to learn what is included with a Unit purchase and how to calculate the Unit size. The balconies depicted are conceptual and the size will vary based on final permitting and completed construction. Pursuant to the license agreement, Developer has the right to use the trade names, marks, images, and logos of Alta Development LLC for so long as the license agreement is not terminated or otherwise lapses.

Developer is not incorporated in, located in, nor a resident of, New York, or residents of any other jurisdiction were permitted by law.  
Reproduction for any use is not authorized. 2024 ALTA SOMI I, LLC. Artist's renderings of development; excludes images of surrounding and neighboring buildings.





# 1. Unit

1. Unit  
2. Location

3. Size and

4. Features

5. Amenities



Somi Walk (the "Condominium") is developed by ALTA SOMI I, LLC ("Developer") and you should only rely on the Developer's written representations. The illustrations and images are conceptual and may vary from concept to actual construction. The images are examples and do not reflect the design or decor of the completed Condominium. The floor plan, unit layout, locations of windows, floors closets, plumbing fixtures, mechanical equipment, appliances, structural elements, architectural design elements, views, and the uses configurations, and entries to rooms may change based on final approval plans, permitting, and completed construction. The furniture plan and the use of a space illustrated are suggested us only and not intended to guaranty or represent and specific use of space. Furnishings, design features, and decor illustrated and suggested uses only and not intended to guaranty or represent any specific use of space. Furnishings, design features, and decor illustrated are not included with purchase of a Unit. Certain amenities and features may require additional expense by Unit owner. There are water views, but the Condominium is not waterfront, and the views will vary depending on the Unit purchased. No view, water or otherwise, is guaranteed. Consult only the Developer's Prospectus for the Condominium to learn terms, conditions, specifications, estimated costs, Unit views, and to learn what is included with a Unit purchase and how to calculate the Unit size. The balconies depicted are conceptual and the size will vary based on final permitting and completed construction. Pursuant to the license agreement, Developer has the right to use the trade names, marks, images, and logos of Alta Development LLC for so long as the license agreement is not terminated or otherwise lapses.

Developer is not incorporated in, located in, nor a resident of, New York, or residents of any other jurisdiction were permitted by law.  
Reproduction for any use is not authorized. 2024 ALTA SOMI I, LLC. Artist's renderings of development; excludes images of surrounding and neighboring buildings.



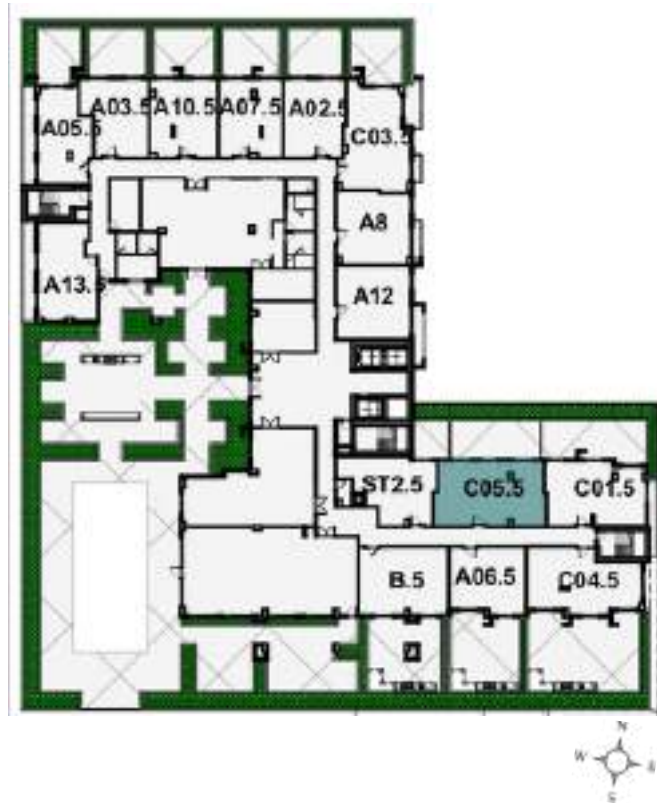
m /

/ql m  
/q/

tti/ /f/tm/ e /

oi i/ /f/ns/ e /

lmi/ /f/l1 / e /



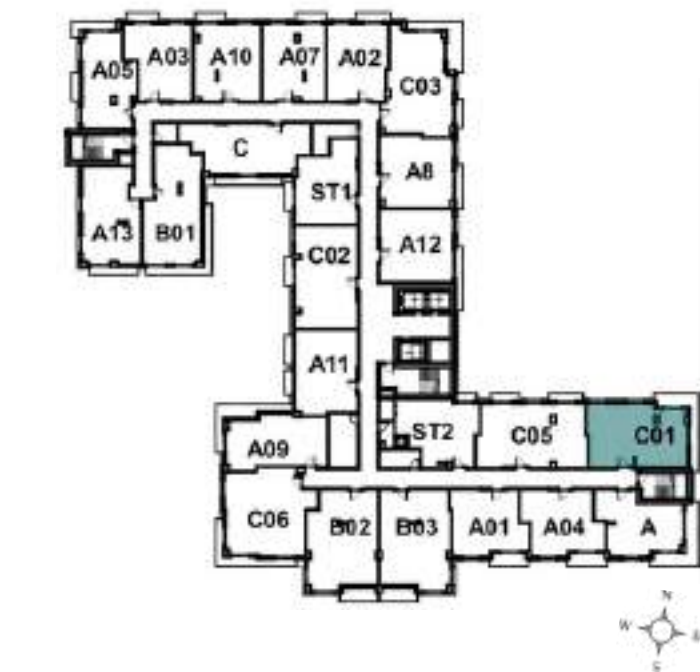
Somi Walk (the "Condominium") is developed by ALTA SOMI I, LLC ("Developer") and you should only rely on the Developer's written representations. The illustrations and images are conceptual and may vary from concept to actual construction. The images are examples and do not reflect the design or decor of the completed Condominium. The floor plan, unit layout, locations of windows, floors closets, plumbing fixtures, mechanical equipment, appliances, structural elements, architectural design elements, views, and the uses configurations, and entries to rooms may change based on final approval plans, permitting, and completed construction. The furniture plan and the use of a space illustrated are suggested us only and not intended to guaranty or represent and specific use of space. Furnishings, design features, and decor illustrated and suggested uses only and not intended to guaranty or represent any specific use of space. Furnishings, design features, and decor illustrated are not included with purchase of a Unit. Certain amenities and features may require additional expense by Unit owner. There are water views, but the Condominium is not waterfront, and the views will vary depending on the Unit purchased. No view, water or otherwise, is guaranteed. Consult only the Developer's Prospectus for the Condominium to learn terms, conditions, specifications, estimated costs, Unit views, and to learn what is included with a Unit purchase and how to calculate the Unit size. The balconies depicted are conceptual and the size will vary based on final permitting and completed construction. Pursuant to the license agreement, Developer has the right to use the trade names, marks, images, and logos of Alta Development LLC for so long as the license agreement is not terminated or otherwise lapses.

Developer is not incorporated in, located in, nor a resident of, New York, or residents of any other jurisdiction were permitted by law.  
Reproduction for any use is not authorized. 2024 ALTA SOMI I, LLC. Artist's renderings of development; excludes images of surrounding and neighboring buildings.



# 1. Unit

1. Unit  
2. Location  
3. Bedroom  
4. Bathroom  
5. Kitchen



Somi Walk (the "Condominium") is developed by ALTA SOMI I, LLC ("Developer") and you should only rely on the Developer's written representations. The illustrations and images are conceptual and may vary from concept to actual construction. The images are examples and do not reflect the design or decor of the completed Condominium. The floor plan, unit layout, locations of windows, floors closets, plumbing fixtures, mechanical equipment, appliances, structural elements, architectural design elements, views, and the uses configurations, and entries to rooms may change based on final approval plans, permitting, and completed construction. The furniture plan and the use of a space illustrated are suggested us only and not intended to guaranty or represent and specific use of space. Furnishings, design features, and decor illustrated and suggested uses only and not intended to guaranty or represent any specific use of space. Furnishings, design features, and decor illustrated are not included with purchase of a Unit. Certain amenities and features may require additional expense by Unit owner. There are water views, but the Condominium is not waterfront, and the views will vary depending on the Unit purchased. No view, water or otherwise, is guaranteed. Consult only the Developer's Prospectus for the Condominium to learn terms, conditions, specifications, estimated costs, Unit views, and to learn what is included with a Unit purchase and how to calculate the Unit size. The balconies depicted are conceptual and the size will vary based on final permitting and completed construction. Pursuant to the license agreement, Developer has the right to use the trade names, marks, images, and logos of Alta Development LLC for so long as the license agreement is not terminated or otherwise lapses.





o/ /

/nq  
/s nq

0 q/ /i/0r/ f /

s tr/ /i/s o/ f /

nq s 0/ /i/not/ f /



SOMI WALK  
RESIDENCES

Somi Walk (the "Condominium") is developed by ALTA SOMI I, LLC ("Developer") and you should only rely on the Developer's written representations. The illustrations and images are conceptual and may vary from concept to actual construction. The images are examples and do not reflect the design or decor of the completed Condominium. The floor plan, unit layout, locations of windows, floors closets, plumbing fixtures, mechanical equipment, appliances, structural elements, architectural design elements, views, and the uses configurations, and entries to rooms may change based on final approval plans, permitting, and completed construction. The furniture plan and the use of a space illustrated are suggested us only and not intended to guaranty or represent and specific use of space. Furnishings, design features, and decor illustrated and suggested uses only and not intended to guaranty or represent any specific use of space. Furnishings, design features, and decor illustrated are not included with purchase of a Unit. Certain amenities and features may require additional expense by Unit owner. There are water views, but the Condominium is not waterfront, and the views will vary depending on the Unit purchased. No view, water or otherwise, is guaranteed. Consult only the Developer's Prospectus for the Condominium to learn terms, conditions, specifications, estimated costs, Unit views, and to learn what is included with a Unit purchase and how to calculate the Unit size. The balconies depicted are conceptual and the size will vary based on final permitting and completed construction. Pursuant to the license agreement, Developer has the right to use the trade names, marks, images, and logos of Alta Development LLC for so long as the license agreement is not terminated or otherwise lapses.

Developer is not incorporated in, located in, nor a resident of, New York, or residents of any other jurisdiction were permitted by law.  
Reproduction for any use is not authorized. 2024 ALTA SOMI I, LLC. Artist's renderings of development; excludes images of surrounding and neighboring buildings.





o/ /



SOMI WALK  
RESIDENCES

/nr

/s nr

8rq/ /i/08/ f /

nm8/ /i/ s/ f /

n8tn/ /i/n0q/ f /



Somi Walk (the "Condominium") is developed by ALTA SOMI I, LLC ("Developer") and you should only rely on the Developer's written representations. The illustrations and images are conceptual and may vary from concept to actual construction. The images are examples and do not reflect the design or decor of the completed Condominium. The floor plan, unit layout, locations of windows, floors closets, plumbing fixtures, mechanical equipment, appliances, structural elements, architectural design elements, views, and the uses configurations, and entries to rooms may change based on final approval plans, permitting, and completed construction. The furniture plan and the use of a space illustrated are suggested us only and not intended to guaranty or represent and specific use of space. Furnishings, design features, and decor illustrated and suggested uses only and not intended to guaranty or represent any specific use of space. Furnishings, design features, and decor illustrated are not included with purchase of a Unit. Certain amenities and features may require additional expense by Unit owner. There are water views, but the Condominium is not waterfront, and the views will vary depending on the Unit purchased. No view, water or otherwise, is guaranteed. Consult only the Developer's Prospectus for the Condominium to learn terms, conditions, specifications, estimated costs, Unit views, and to learn what is included with a Unit purchase and how to calculate the Unit size. The balconies depicted are conceptual and the size will vary based on final permitting and completed construction. Pursuant to the license agreement, Developer has the right to use the trade names, marks, images, and logos of Alta Development LLC for so long as the license agreement is not terminated or otherwise lapses.

Developer is not incorporated in, located in, nor a resident of, New York, or residents of any other jurisdiction were permitted by law.  
Reproduction for any use is not authorized. 2024 ALTA SOMI I, LLC. Artist's renderings of development; excludes images of surrounding and neighboring buildings.



o/ /

/nr

/t nr

8rq/ /i/08/ f /

oro/ /i/oo/ f /

nn8s/ /i/nm/ f /



Somi Walk (the "Condominium") is developed by ALTA SOMI I, LLC ("Developer") and you should only rely on the Developer's written representations. The illustrations and images are conceptual and may vary from concept to actual construction. The images are examples and do not reflect the design or decor of the completed Condominium. The floor plan, unit layout, locations of windows, floors closets, plumbing fixtures, mechanical equipment, appliances, structural elements, architectural design elements, views, and the uses configurations, and entries to rooms may change based on final approval plans, permitting, and completed construction. The furniture plan and the use of a space illustrated are suggested us only and not intended to guaranty or represent and specific use of space. Furnishings, design features, and decor illustrated and suggested uses only and not intended to guaranty or represent any specific use of space. Furnishings, design features, and decor illustrated are not included with purchase of a Unit. Certain amenities and features may require additional expense by Unit owner. There are water views, but the Condominium is not waterfront, and the views will vary depending on the Unit purchased. No view, water or otherwise, is guaranteed. Consult only the Developer's Prospectus for the Condominium to learn terms, conditions, specifications, estimated costs, Unit views, and to learn what is included with a Unit purchase and how to calculate the Unit size. The balconies depicted are conceptual and the size will vary based on final permitting and completed construction. Pursuant to the license agreement, Developer has the right to use the trade names, marks, images, and logos of Alta Development LLC for so long as the license agreement is not terminated or otherwise lapses.



for information



SOMI WALK  
RESIDENCES

enter  
common

entrance - Level - Floor

entrance - Level - Floor

entrance - Level - Floor



Somi Walk (the "Condominium") is developed by ALTA SOMI I, LLC ("Developer") and you should only rely on the Developer's written representations. The illustrations and images are conceptual and may vary from concept to actual construction. The images are examples and do not reflect the design or decor of the completed Condominium. The floor plan, unit layout, locations of windows, floors closets, plumbing fixtures, mechanical equipment, appliances, structural elements, architectural design elements, views, and the uses configurations, and entries to rooms may change based on final approval plans, permitting, and completed construction. The furniture plan and the use of a space illustrated are suggested us only and not intended to guaranty or represent and specific use of space. Furnishings, design features, and decor illustrated and suggested uses only and not intended to guaranty or represent any specific use of space. Furnishings, design features, and decor illustrated are not included with purchase of a Unit. Certain amenities and features may require additional expense by Unit owner. There are water views, but the Condominium is not waterfront, and the views will vary depending on the Unit purchased. No view, water or otherwise, is guaranteed. Consult only the Developer's Prospectus for the Condominium to learn terms, conditions, specifications, estimated costs, Unit views, and to learn what is included with a Unit purchase and how to calculate the Unit size. The balconies depicted are conceptual and the size will vary based on final permitting and completed construction. Pursuant to the license agreement, Developer has the right to use the trade names, marks, images, and logos of Alta Development LLC for so long as the license agreement is not terminated or otherwise lapses.

Developer is not incorporated in, located in, nor a resident of, New York, or residents of any other jurisdiction were permitted by law.  
Reproduction for any use is not authorized. 2024 ALTA SOMI I, LLC. Artist's renderings of development; excludes images of surrounding and neighboring buildings.





# 1. Unit

11  
rLi o

sl3. .err. d .

mi. .em d .

sqf. .esf. d .



SOMI WALK  
RESIDENCES

Somi Walk (the "Condominium") is developed by ALTA SOMI I, LLC ("Developer") and you should only rely on the Developer's written representations. The illustrations and images are conceptual and may vary from concept to actual construction. The images are examples and do not reflect the design or decor of the completed Condominium. The floor plan, unit layout, locations of windows, floors closets, plumbing fixtures, mechanical equipment, appliances, structural elements, architectural design elements, views, and the uses configurations, and entries to rooms may change based on final approval plans, permitting, and completed construction. The furniture plan and the use of a space illustrated are suggested us only and not intended to guaranty or represent and specific use of space. Furnishings, design features, and decor illustrated and suggested uses only and not intended to guaranty or represent any specific use of space. Furnishings, design features, and decor illustrated are not included with purchase of a Unit. Certain amenities and features may require additional expense by Unit owner. There are water views, but the Condominium is not waterfront, and the views will vary depending on the Unit purchased. No view, water or otherwise, is guaranteed. Consult only the Developer's Prospectus for the Condominium to learn terms, conditions, specifications, estimated costs, Unit views, and to learn what is included with a Unit purchase and how to calculate the Unit size. The balconies depicted are conceptual and the size will vary based on final permitting and completed construction. Pursuant to the license agreement, Developer has the right to use the trade names, marks, images, and logos of Alta Development LLC for so long as the license agreement is not terminated or otherwise lapses.

Developer is not incorporated in, located in, nor a resident of, New York, or residents of any other jurisdiction were permitted by law.  
Reproduction for any use is not authorized. 2024 ALTA SOMI I, LLC. Artist's renderings of development; excludes images of surrounding and neighboring buildings.





# 1. Unit

Unit  
Location

Room

Room

Room



Somi Walk (the "Condominium") is developed by ALTA SOMI I, LLC ("Developer") and you should only rely on the Developer's written representations. The illustrations and images are conceptual and may vary from concept to actual construction. The images are examples and do not reflect the design or decor of the completed Condominium. The floor plan, unit layout, locations of windows, floors closets, plumbing fixtures, mechanical equipment, appliances, structural elements, architectural design elements, views, and the uses configurations, and entries to rooms may change based on final approval plans, permitting, and completed construction. The furniture plan and the use of a space illustrated are suggested us only and not intended to guaranty or represent and specific use of space. Furnishings, design features, and decor illustrated and suggested uses only and not intended to guaranty or represent any specific use of space. Furnishings, design features, and decor illustrated are not included with purchase of a Unit. Certain amenities and features may require additional expense by Unit owner. There are water views, but the Condominium is not waterfront, and the views will vary depending on the Unit purchased. No view, water or otherwise, is guaranteed. Consult only the Developer's Prospectus for the Condominium to learn terms, conditions, specifications, estimated costs, Unit views, and to learn what is included with a Unit purchase and how to calculate the Unit size. The balconies depicted are conceptual and the size will vary based on final permitting and completed construction. Pursuant to the license agreement, Developer has the right to use the trade names, marks, images, and logos of Alta Development LLC for so long as the license agreement is not terminated or otherwise lapses.



mm  
s enr .

ssm .i.sm f .

no. .i.n. f .

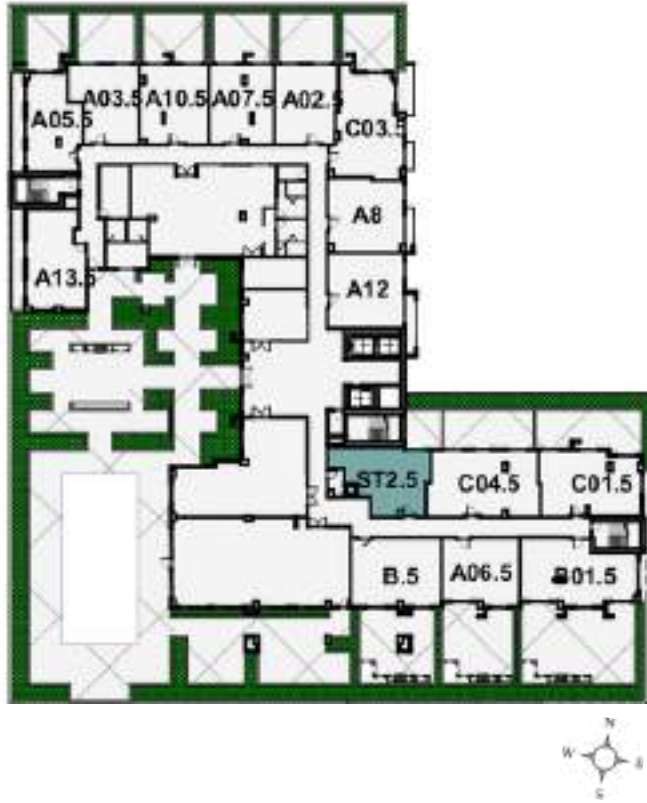
suq. .i.sq. f .



Somi Walk (the "Condominium") is developed by ALTA SOMI I, LLC ("Developer") and you should only rely on the Developer's written representations. The illustrations and images are conceptual and may vary from concept to actual construction. The images are examples and do not reflect the design or decor of the completed Condominium. The floor plan, unit layout, locations of windows, floors closets, plumbing fixtures, mechanical equipment, appliances, structural elements, architectural design elements, views, and the uses configurations, and entries to rooms may change based on final approval plans, permitting, and completed construction. The furniture plan and the use of a space illustrated are suggested us only and not intended to guaranty or represent and specific use of space. Furnishings, design features, and decor illustrated and suggested uses only and not intended to guaranty or represent any specific use of space. Furnishings, design features, and decor illustrated are not included with purchase of a Unit. Certain amenities and features may require additional expense by Unit owner. There are water views, but the Condominium is not waterfront, and the views will vary depending on the Unit purchased. No view, water or otherwise, is guaranteed. Consult only the Developer's Prospectus for the Condominium to learn terms, conditions, specifications, estimated costs, Unit views, and to learn what is included with a Unit purchase and how to calculate the Unit size. The balconies depicted are conceptual and the size will vary based on final permitting and completed construction. Pursuant to the license agreement, Developer has the right to use the trade names, marks, images, and logos of Alta Development LLC for so long as the license agreement is not terminated or otherwise lapses.

Developer is not incorporated in, located in, nor a resident of, New York, or residents of any other jurisdiction were permitted by law.  
Reproduction for any use is not authorized. 2024 ALTA SOMI I, LLC. Artist's renderings of development; excludes images of surrounding and neighboring buildings.





Somi Walk (the "Condominium") is developed by ALTA SOMI I, LLC ("Developer") and you should only rely on the Developer's written representations. The illustrations and images are conceptual and may vary from concept to actual construction. The images are examples and do not reflect the design or decor of the completed Condominium. The floor plan, unit layout, locations of windows, floors closets, plumbing fixtures, mechanical equipment, appliances, structural elements, architectural design elements, views, and the uses configurations, and entries to rooms may change based on final approval plans, permitting, and completed construction. The furniture plan and the use of a space illustrated are suggested us only and not intended to guaranty or represent and specific use of space. Furnishings, design features, and decor illustrated and suggested uses only and not intended to guaranty or represent any specific use of space. Furnishings, design features, and decor illustrated are not included with purchase of a Unit. Certain amenities and features may require additional expense by Unit owner. There are water views, but the Condominium is not waterfront, and the views will vary depending on the Unit purchased. No view, water or otherwise, is guaranteed. Consult only the Developer's Prospectus for the Condominium to learn terms, conditions, specifications, estimated costs, Unit views, and to learn what is included with a Unit purchase and how to calculate the Unit size. The balconies depicted are conceptual and the size will vary based on final permitting and completed construction. Pursuant to the license agreement, Developer has the right to use the trade names, marks, images, and logos of Alta Development LLC for so long as the license agreement is not terminated or otherwise lapses.

Developer is not incorporated in, located in, nor a resident of, New York, or residents of any other jurisdiction were permitted by law.  
Reproduction for any use is not authorized. 2024 ALTA SOMI I, LLC. Artist's renderings of development; excludes images of surrounding and neighboring buildings.

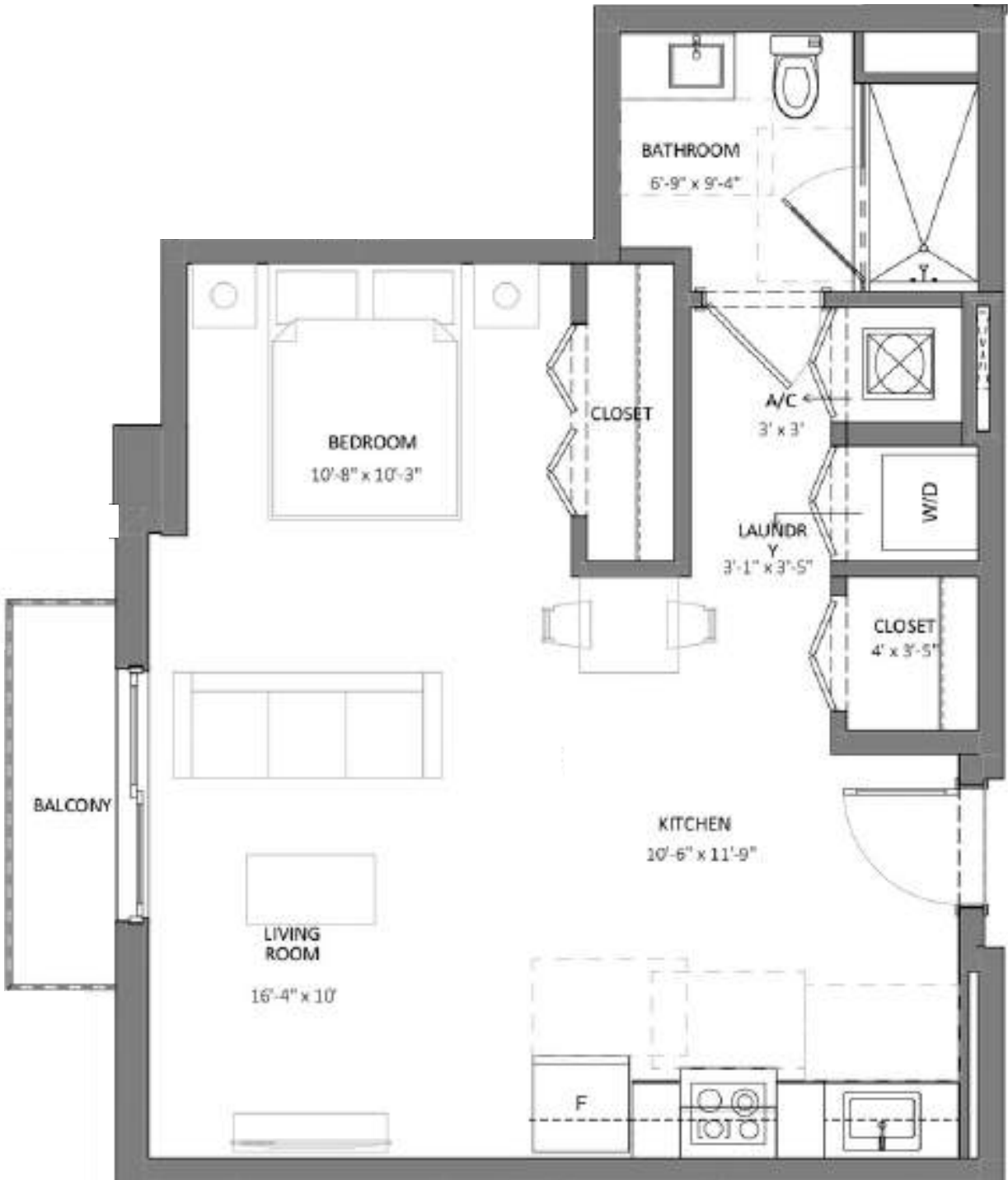


no  
t enr .

sln .irs. f .

om .i.o. f .

soo .ir0. f .



Somi Walk (the "Condominium") is developed by ALTA SOMI I, LLC ("Developer") and you should only rely on the Developer's written representations. The illustrations and images are conceptual and may vary from concept to actual construction. The images are examples and do not reflect the design or decor of the completed Condominium. The floor plan, unit layout, locations of windows, floors closets, plumbing fixtures, mechanical equipment, appliances, structural elements, architectural design elements, views, and the uses configurations, and entries to rooms may change based on final approval plans, permitting, and completed construction. The furniture plan and the use of a space illustrated are suggested us only and not intended to guaranty or represent and specific use of space. Furnishings, design features, and decor illustrated and suggested uses only and not intended to guaranty or represent any specific use of space. Furnishings, design features, and decor illustrated are not included with purchase of a Unit. Certain amenities and features may require additional expense by Unit owner. There are water views, but the Condominium is not waterfront, and the views will vary depending on the Unit purchased. No view, water or otherwise, is guaranteed. Consult only the Developer's Prospectus for the Condominium to learn terms, conditions, specifications, estimated costs, Unit views, and to learn what is included with a Unit purchase and how to calculate the Unit size. The balconies depicted are conceptual and the size will vary based on final permitting and completed construction. Pursuant to the license agreement, Developer has the right to use the trade names, marks, images, and logos of Alta Development LLC for so long as the license agreement is not terminated or otherwise lapses.

Developer is not incorporated in, located in, nor a resident of, New York, or residents of any other jurisdiction were permitted by law.  
Reproduction for any use is not authorized. 2024 ALTA SOMI I, LLC. Artist's renderings of development; excludes images of surrounding and neighboring buildings.

