



ST REGIS
MIAMI
THE RESIDENCES

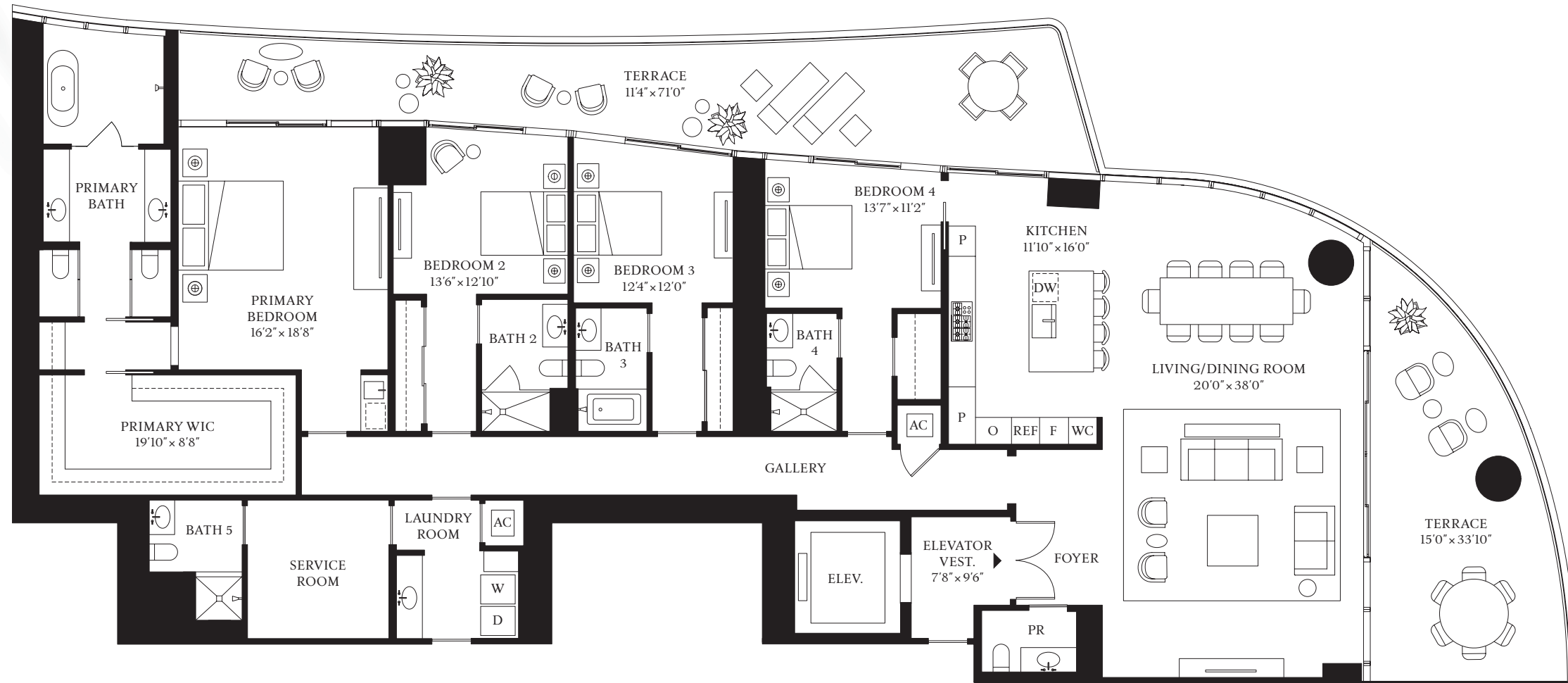
RESIDENCE

A

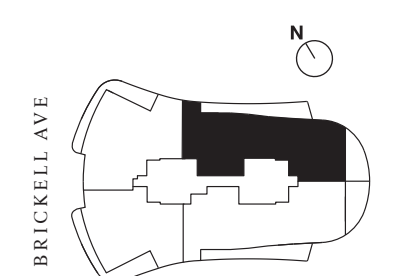
FLOORS 7-18

4 BEDROOMS
5 BATHROOMS
1 POWDER ROOM

INTERIOR
3,712 SF | 344.9 SQM
EXTERIOR
941 SF | 87.4 SQM



BISCAYNE BAY



The dimensions stated for this unit floor plan are approximate because there are various recognized methods for calculating the square footage of a unit. The square footage stated here is calculated from the exterior boundaries of the exterior walls to the centerline of interior demising walls without deductions for cutouts, curves, or architectural features. This method typically results in quoted dimensions greater than the dimensions that would be determined by using other accepted methods. The definition of "Unit" and the calculation method to be relied upon is set forth by the Developer in Developer's prospectus and the method set forth in the Developer's prospectus may result in a square footage calculation less than the method used here. Dimensions and unit configuration may change during construction. Consult the Developer's prospectus to understand what is offered with purchase, the calculation of the Unit square footage and dimensions. Prices are not based on the square footage no matter the method of calculation of unit dimensions and all prices are subject to change at any time. The project graphics, renderings, photographs, and text provided herein are copyrighted works owned by 1809 Brickell Property Owner, LLC 2022.



ST REGIS
MIAMI
THE RESIDENCES

RESIDENCE

A

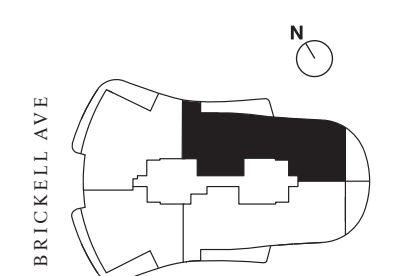
FLOORS 21-30, 33-41

4 BEDROOMS
5 BATHROOMS
1 POWDER ROOM

INTERIOR
3,712 SF | 344.9 SQM
EXTERIOR
734 SF | 68.2 SQM



BISCAYNE BAY



The dimensions stated for this unit floor plan are approximate because there are various recognized methods for calculating the square footage of a unit. The square footage stated here is calculated from the exterior boundaries of the exterior walls to the centerline of interior demising walls without deductions for cutouts, curves, or architectural features. This method typically results in quoted dimensions greater than the dimensions that would be determined by using other accepted methods. The definition of "Unit" and the calculation method to be relied upon is set forth by the Developer in Developer's prospectus and the method set forth in the Developer's prospectus may result in a square footage calculation less than the method used here. Dimensions and unit configuration may change during construction. Consult the Developer's prospectus to understand what is offered with purchase, the calculation of the Unit square footage and dimensions. Prices are not based on the square footage no matter the method of calculation of unit dimensions and all prices are subject to change at any time. The project graphics, renderings, photographs, and text provided herein are copyrighted works owned by 1809 Brickell Property Owner, LLC 2022.



ST REGIS
MIAMI
THE RESIDENCES

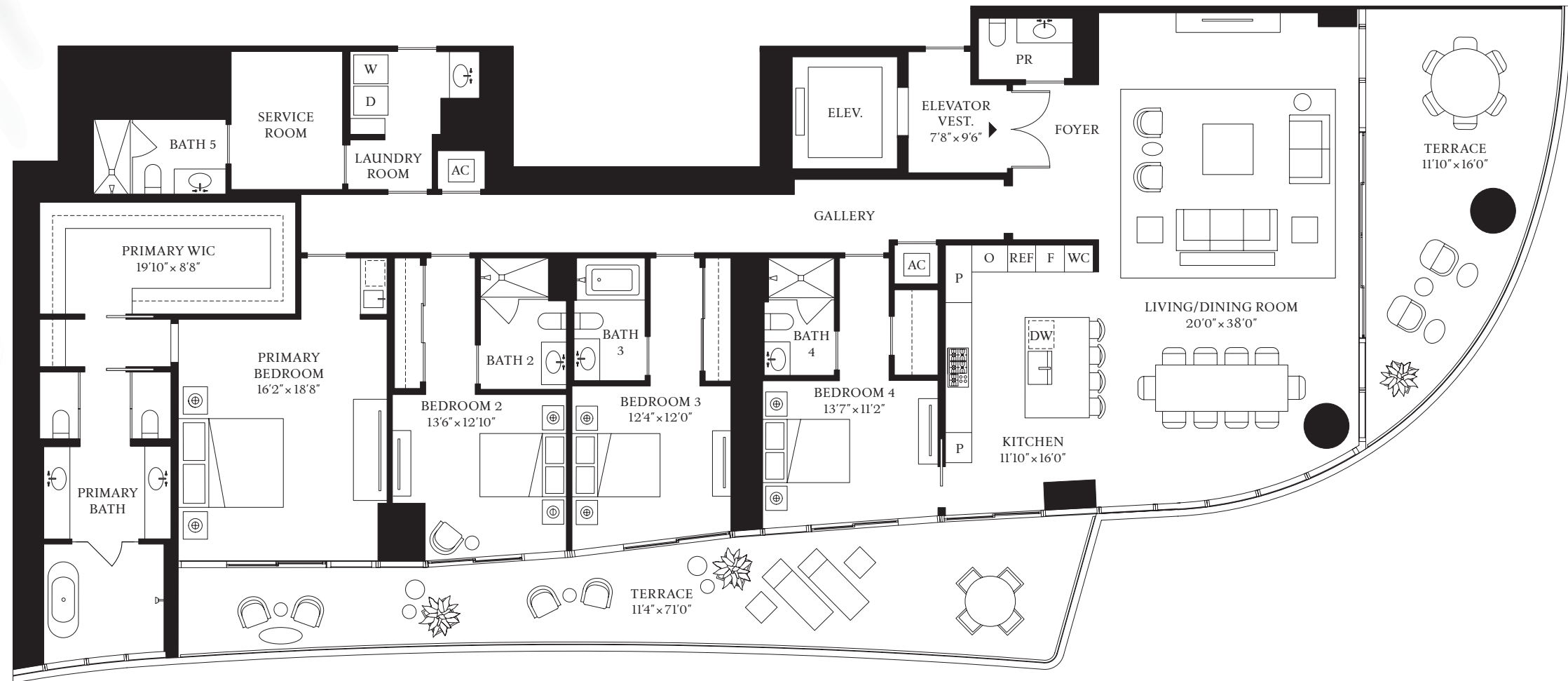
RESIDENCE

B

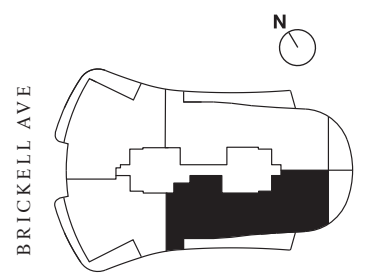
FLOORS 7-18

4 BEDROOMS
5 BATHROOMS
1 POWDER ROOM

INTERIOR
3,679 SF | 341.8 SQM
EXTERIOR
941 SF | 87.4 SQM



BISCAYNE BAY



The dimensions stated for this unit floor plan are approximate because there are various recognized methods for calculating the square footage of a unit. The square footage stated here is calculated from the exterior boundaries of the exterior walls to the centerline of interior demising walls without deductions for cutouts, curves, or architectural features. This method typically results in quoted dimensions greater than the dimensions that would be determined by using other accepted methods. The definition of "Unit" and the calculation method to be relied upon is set forth by the Developer in Developer's prospectus and the method set forth in the Developer's prospectus may result in a square footage calculation less than the method used here. Dimensions and unit configuration may change during construction. Consult the Developer's prospectus to understand what is offered with purchase, the calculation of the Unit square footage and dimensions. Prices are not based on the square footage no matter the method of calculation of unit dimensions and all prices are subject to change at any time. The project graphics, renderings, photographs, and text provided herein are copyrighted works owned by 1809 Brickell Property Owner, LLC 2022.



ST REGIS
MIAMI
THE RESIDENCES

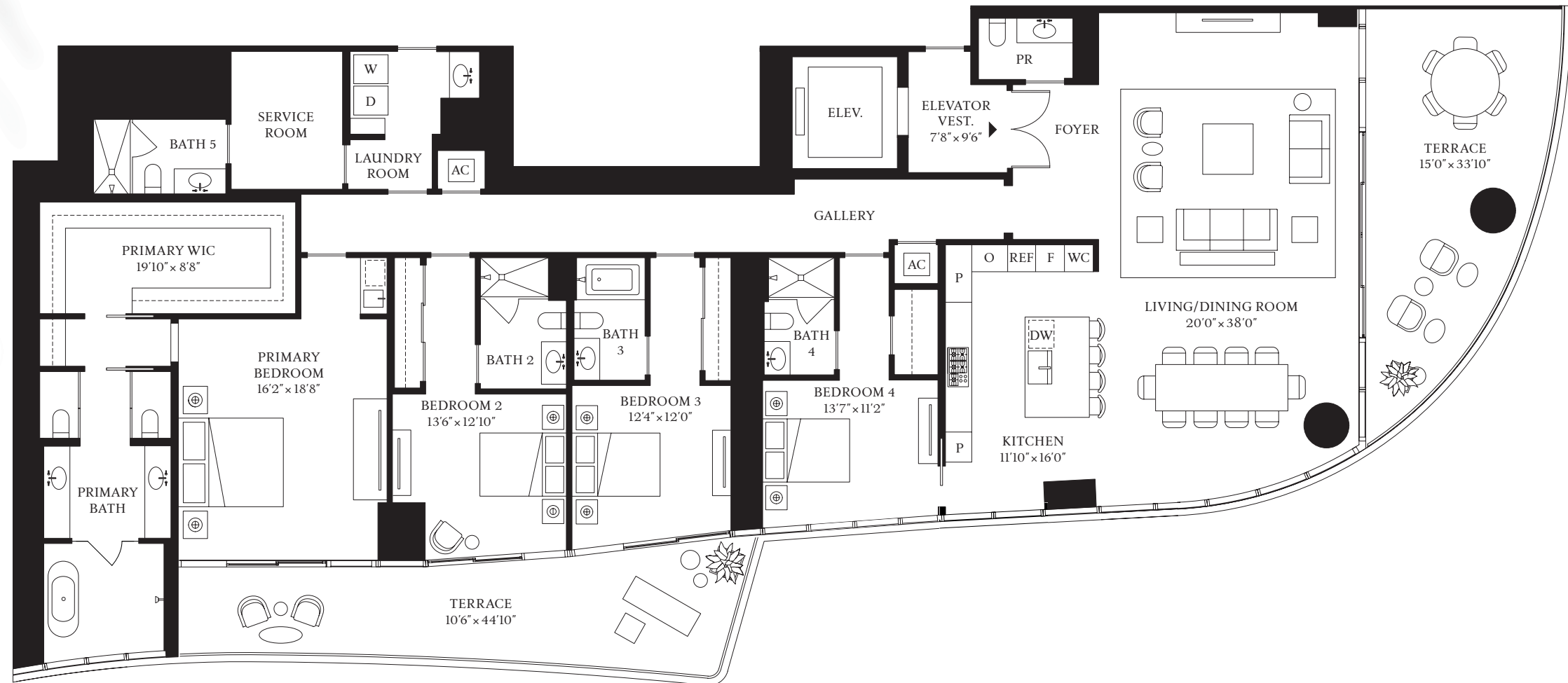
RESIDENCE

B

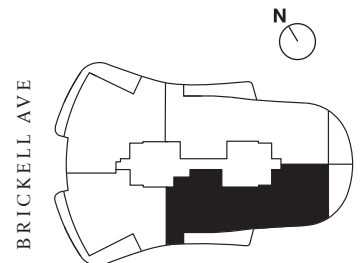
FLOORS 21-30, 33-41

4 BEDROOMS
5 BATHROOMS
1 POWDER ROOM

INTERIOR
3,679 SF | 341.8 SQM
EXTERIOR
734 SF | 68.2 SQM



BISCAYNE BAY



BRICKELL AVE

The dimensions stated for this unit floor plan are approximate because there are various recognized methods for calculating the square footage of a unit. The square footage stated here is calculated from the exterior boundaries of the exterior walls to the centerline of interior demising walls without deductions for cutouts, curves, or architectural features. This method typically results in quoted dimensions greater than the dimensions that would be determined by using other accepted methods. The definition of "Unit" and the calculation method to be relied upon is set forth by the Developer in Developer's prospectus and the method set forth in the Developer's prospectus may result in a square footage calculation less than the method used here. Dimensions and unit configuration may change during construction. Consult the Developer's prospectus to understand what is offered with purchase, the calculation of the Unit square footage and dimensions. Prices are not based on the square footage no matter the method of calculation of unit dimensions and all prices are subject to change at any time. The project graphics, renderings, photographs, and text provided herein are copyrighted works owned by 1809 Brickell Property Owner, LLC 2022.



ST REGIS
MIAMI
THE RESIDENCES

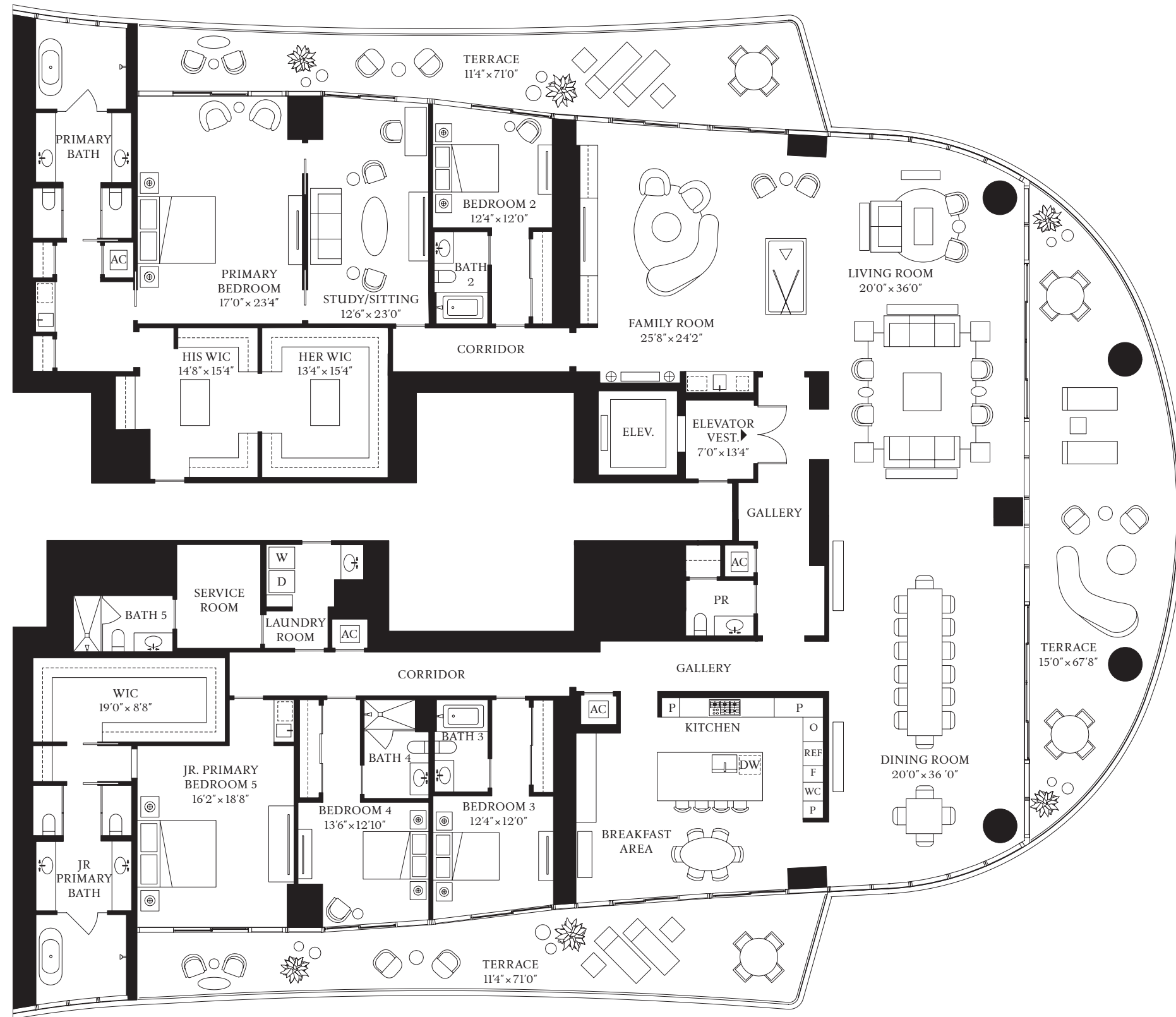
RESIDENCE

AB

FLOORS 7-18

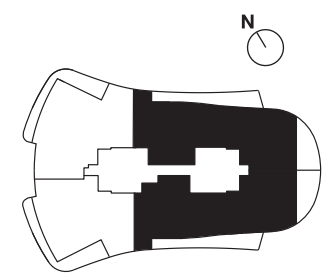
5 BEDROOMS
6 BATHROOMS
1 POWDER ROOM

INTERIOR
7,391 SF | 686.6 SQM
EXTERIOR
1,882 SF | 174.8 SQM



BISCAYNE BAY

BRICKELL AVE



The dimensions stated for this unit floor plan are approximate because there are various recognized methods for calculating the square footage of a unit. The square footage stated here is calculated from the exterior boundaries of the exterior walls to the centerline of interior demising walls without deductions for cutouts, curves, or architectural features. This method typically results in quoted dimensions greater than the dimensions that would be determined by using other accepted methods. The definition of "Unit" and the calculation method to be relied upon is set forth by the Developer in Developer's prospectus and the method set forth in the Developer's prospectus may result in a square footage calculation less than the method used here. Dimensions and unit configuration may change during construction. Consult the Developer's prospectus to understand what is offered with purchase, the calculation of the Unit square footage and dimensions. Prices are not based on the square footage no matter the method of calculation of unit dimensions and all prices are subject to change at any time. The project graphics, renderings, photographs, and text provided herein are copyrighted works owned by 1809 Brickell Property Owner, LLC 2022.



ST REGIS
MIAMI
THE RESIDENCES

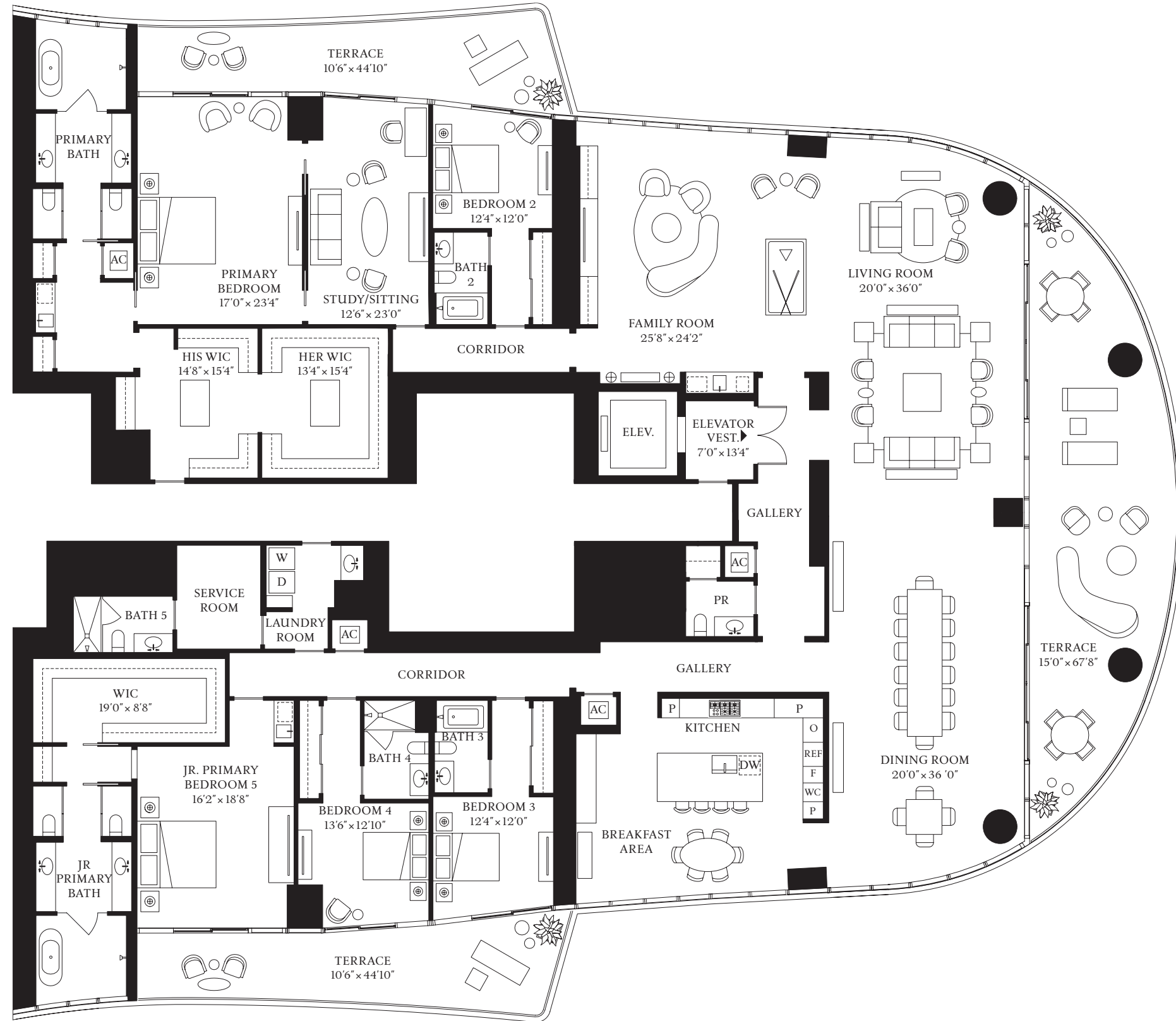
RESIDENCE

AB

FLOORS 21-30, 33-41

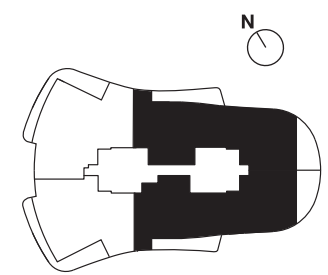
5 BEDROOMS
6 BATHROOMS
1 POWDER ROOM

INTERIOR
7,391 SF | 686.6 SQM
EXTERIOR
1,468 SF | 136.4 SQM



BISCAYNE BAY

BRICKELL AVE



The dimensions stated for this unit floor plan are approximate because there are various recognized methods for calculating the square footage of a unit. The square footage stated here is calculated from the exterior boundaries of the exterior walls to the centerline of interior demising walls without deductions for cutouts, curves, or architectural features. This method typically results in quoted dimensions greater than the dimensions that would be determined by using other accepted methods. The definition of "Unit" and the calculation method to be relied upon is set forth by the Developer in Developer's prospectus and the method set forth in the Developer's prospectus may result in a square footage calculation less than the method used here. Dimensions and unit configuration may change during construction. Consult the Developer's prospectus to understand what is offered with purchase, the calculation of the Unit square footage and dimensions. Prices are not based on the square footage no matter the method of calculation of unit dimensions and all prices are subject to change at any time. The project graphics, renderings, photographs, and text provided herein are copyrighted works owned by 1809 Brickell Property Owner, LLC 2022.



ST REGIS
MIAMI
THE RESIDENCES

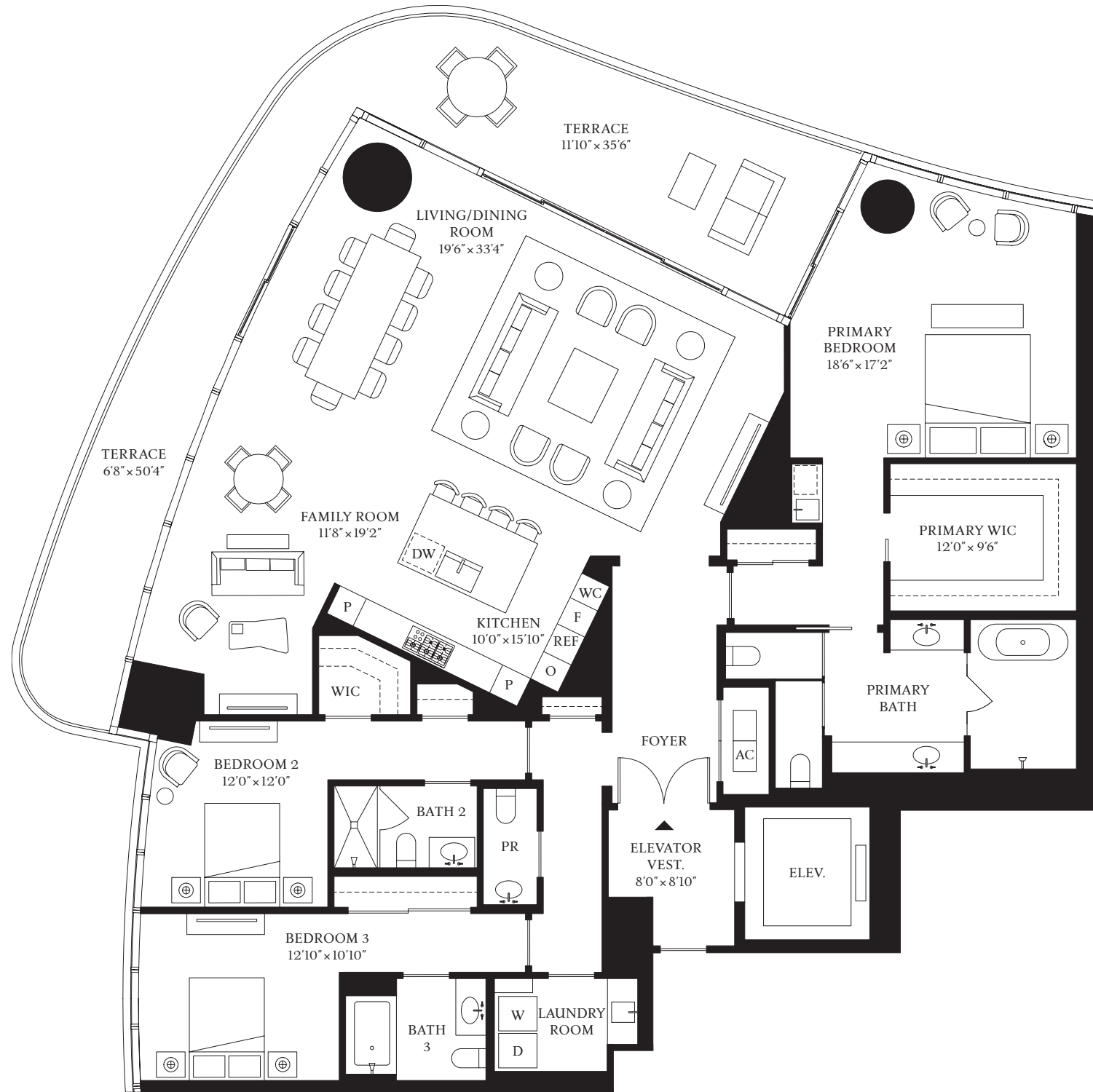
RESIDENCE

C

FLOORS 7-18, 21-30, 33-41

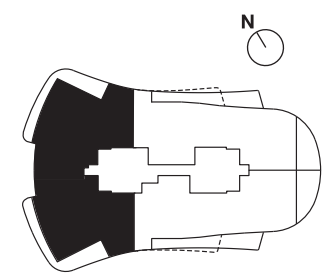
3 BEDROOMS
3 BATHROOMS
1 POWDER ROOM

INTERIOR
2,987 SF | 277.5 SQM
EXTERIOR
590 SF | 54.8 SQM



BISCAYNE BAY

BRICKELL AVE



The dimensions stated for this unit floor plan are approximate because there are various recognized methods for calculating the square footage of a unit. The square footage stated here is calculated from the exterior boundaries of the exterior walls to the centerline of interior demising walls without deductions for cutouts, curves, or architectural features. This method typically results in quoted dimensions greater than the dimensions that would be determined by using other accepted methods. The definition of "Unit" and the calculation method to be relied upon is set forth by the Developer in Developer's prospectus and the method set forth in the Developer's prospectus may result in a square footage calculation less than the method used here. Dimensions and unit configuration may change during construction. Consult the Developer's prospectus to understand what is offered with purchase, the calculation of the Unit square footage and dimensions. Prices are not based on the square footage no matter the method of calculation of unit dimensions and all prices are subject to change at any time. The project graphics, renderings, photographs, and text provided herein are copyrighted works owned by 1809 Brickell Property Owner, LLC 2022.



ST REGIS
MIAMI
THE RESIDENCES

RESIDENCE

D

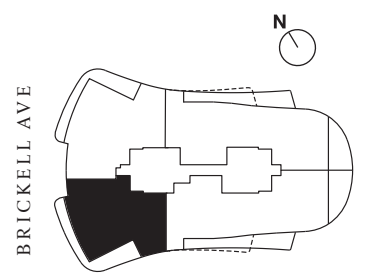
FLOORS 7-18, 21-30, 33-41

2 BEDROOMS
3 BATHROOMS
1 POWDER ROOM

INTERIOR
2,616 SF | 243 SQM
EXTERIOR
590 SF | 54.8 SQM



BISCAYNE BAY



The dimensions stated for this unit floor plan are approximate because there are various recognized methods for calculating the square footage of a unit. The square footage stated here is calculated from the exterior boundaries of the exterior walls to the centerline of interior demising walls without deductions for cutouts, curves, or architectural features. This method typically results in quoted dimensions greater than the dimensions that would be determined by using other accepted methods. The definition of "Unit" and the calculation method to be relied upon is set forth by the Developer in Developer's prospectus and the method set forth in the Developer's prospectus may result in a square footage calculation less than the method used here. Dimensions and unit configuration may change during construction. Consult the Developer's prospectus to understand what is offered with purchase, the calculation of the Unit square footage and dimensions. Prices are not based on the square footage no matter the method of calculation of unit dimensions and all prices are subject to change at any time. The project graphics, renderings, photographs, and text provided herein are copyrighted works owned by 1809 Brickell Property Owner, LLC 2022.