

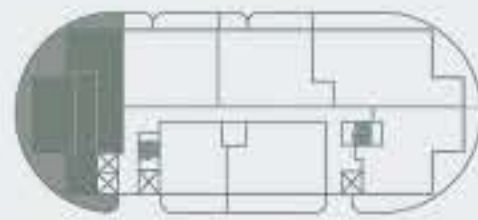
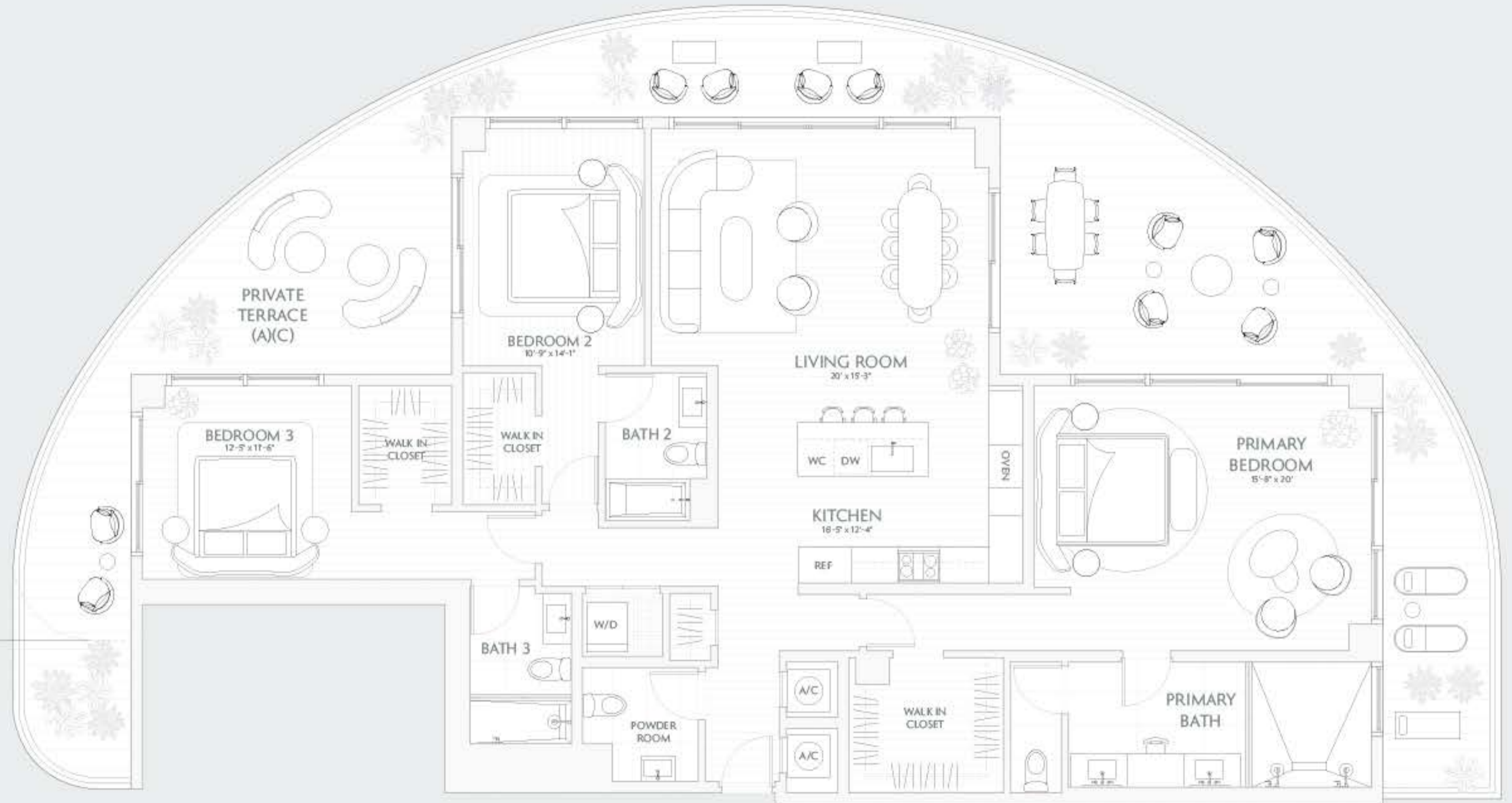
TOWER & SKY  
RESIDENCE

## 01

3 BEDROOMS  
3.5 BATHS  
PRIVATE TERRACE

INTERIOR 2,080 SF / 193.2 M<sup>2</sup>  
EXTERIOR 1,055 SF / 98 M<sup>2</sup>  
TOTAL 3,135 SF / 293.1 M<sup>2</sup>

TERRACE A: 1,055 SF / 98 M<sup>2</sup>  
TERRACE B: 990 SF / 91.9 M<sup>2</sup>  
TERRACE C: 1,055 SF / 98 M<sup>2</sup>



Downtown Skyline  
& Water



Stated interior square footage is measured to the exterior face of exterior walls and to the centerline of interior demising walls or to the exterior face of walls adjoining corridors or other common elements or shared facilities without excluding areas that may be occupied by columns or other structural components. This method of measurement varies from, and is larger than, the dimensions that would be determined by using the description and the definition of the Unit set forth in the Declaration (which generally only includes the interior airspace between the perimeter walls and excludes structural components). For reference, the area of the unit, determined in accordance with the unit boundaries set forth in the Declaration is set forth in Exhibit "3" to the Declaration. All dimensions are approximate and may vary with actual construction. Note that measurements of rooms set forth on this floor plan are generally taken at the greatest points of each given room as if the room were a perfect rectangle, without regard for any cutouts or irregularities. Accordingly, the area of the actual room will typically be smaller than the product obtained by multiplying the stated length times width. All floor plans and development plans are subject to change. The Developer expressly reserves the right to make modifications, revisions, and changes it deems desirable in its sole and absolute discretion. All depictions of furnishings, appliances, built-ins, counters, soffits, floor coverings, lighting, landscaping and other matters of detail, including, without limitation, items of finish and decoration, are conceptual only and are not necessarily included in each Unit. Consult your prospectus and Purchase Agreement.

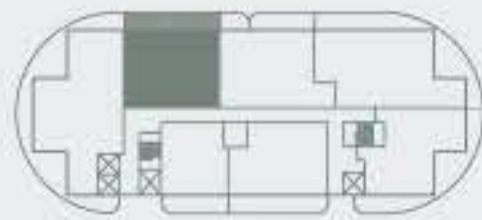
TOWER & SKY  
 RESIDENCE

02

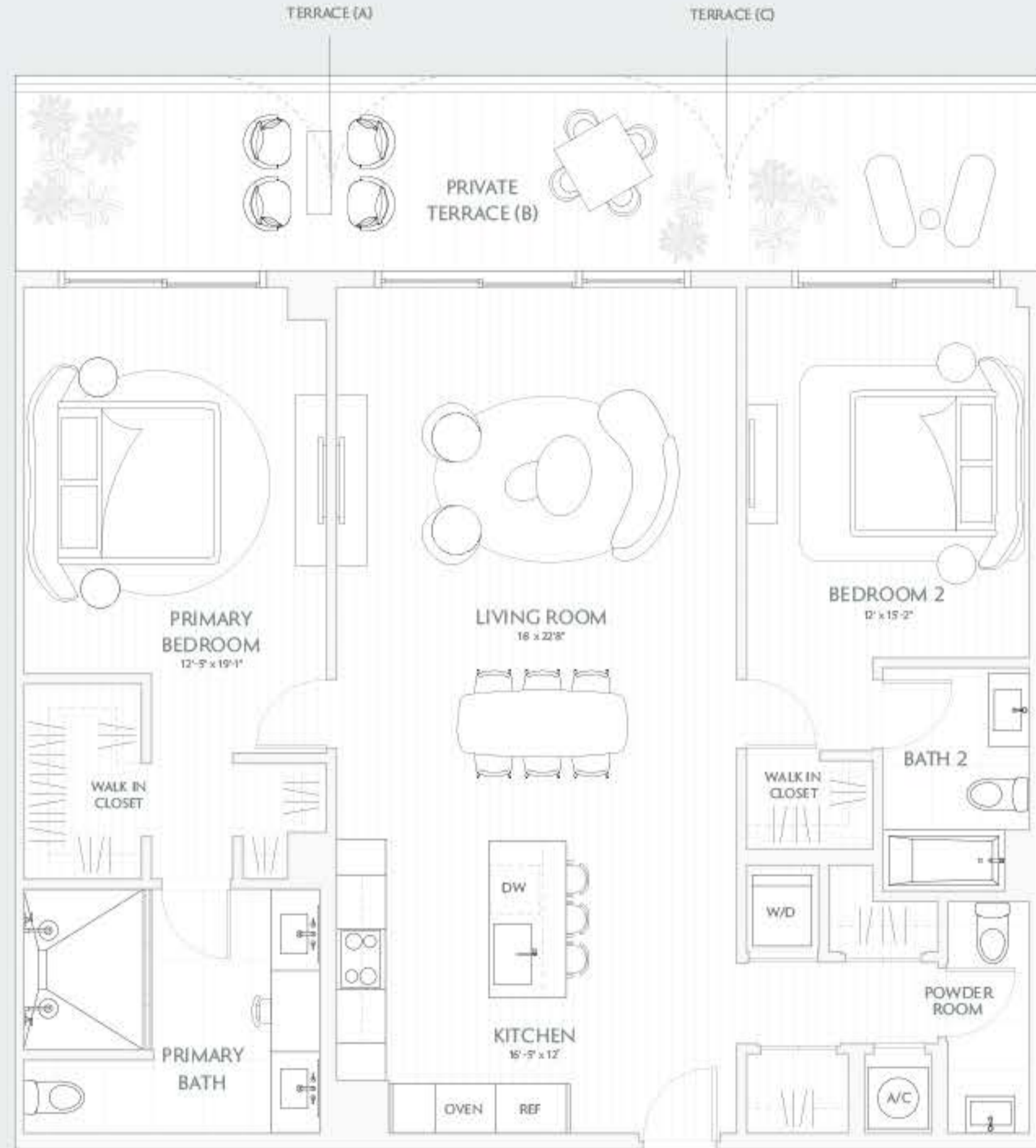
2 BEDROOMS  
 2.5 BATHS  
 PRIVATE TERRACES

INTERIOR 1,524 SF / 141.5 M<sup>2</sup>  
 EXTERIOR 293 SF / 27.2 M<sup>2</sup>  
 TOTAL 1,817 SF / 168.8 M<sup>2</sup>

TERRACE A: 283 SF / 26.3 M<sup>2</sup>  
 TERRACE B: 293 SF / 27.2 M<sup>2</sup>  
 TERRACE C: 283 SF / 26.3 M<sup>2</sup>



Downtown Skyline  
 & Water



Stated interior square footage is measured to the exterior face of exterior walls and to the centerline of interior demising walls or to the exterior face of walls adjoining corridors or other common elements or shared facilities without excluding areas that may be occupied by columns or other structural components. This method of measurement varies from, and is larger than, the dimensions that would be determined by using the description and the definition of the Unit set forth in the Declaration (which generally only includes the interior airspace between the perimeter walls and excludes structural components). For reference, the area of the unit, determined in accordance with the unit boundaries set forth in the Declaration is set forth in Exhibit "3" to the Declaration. All dimensions are approximate and may vary with actual construction. Note that measurements of rooms set forth on this floor plan are generally taken at the greatest points of each given room (as if the room were a perfect rectangle), without regard for any cutouts or irregularities. Accordingly, the area of the actual room will typically be smaller than the product obtained by multiplying the stated length times width. All floor plans and development plans are subject to change. The Developer expressly reserves the right to make modifications, revisions, and changes it deems desirable in its sole and absolute discretion. All depictions of furnishings, appliances, built-ins, counters, soffits, floor coverings, lighting, landscaping and other matters of detail, including, without limitation, items of finish and decoration, are conceptual only and are not necessarily included in each Unit. Consult your prospectus and Purchase Agreement.

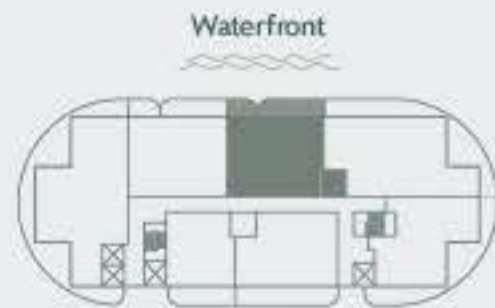
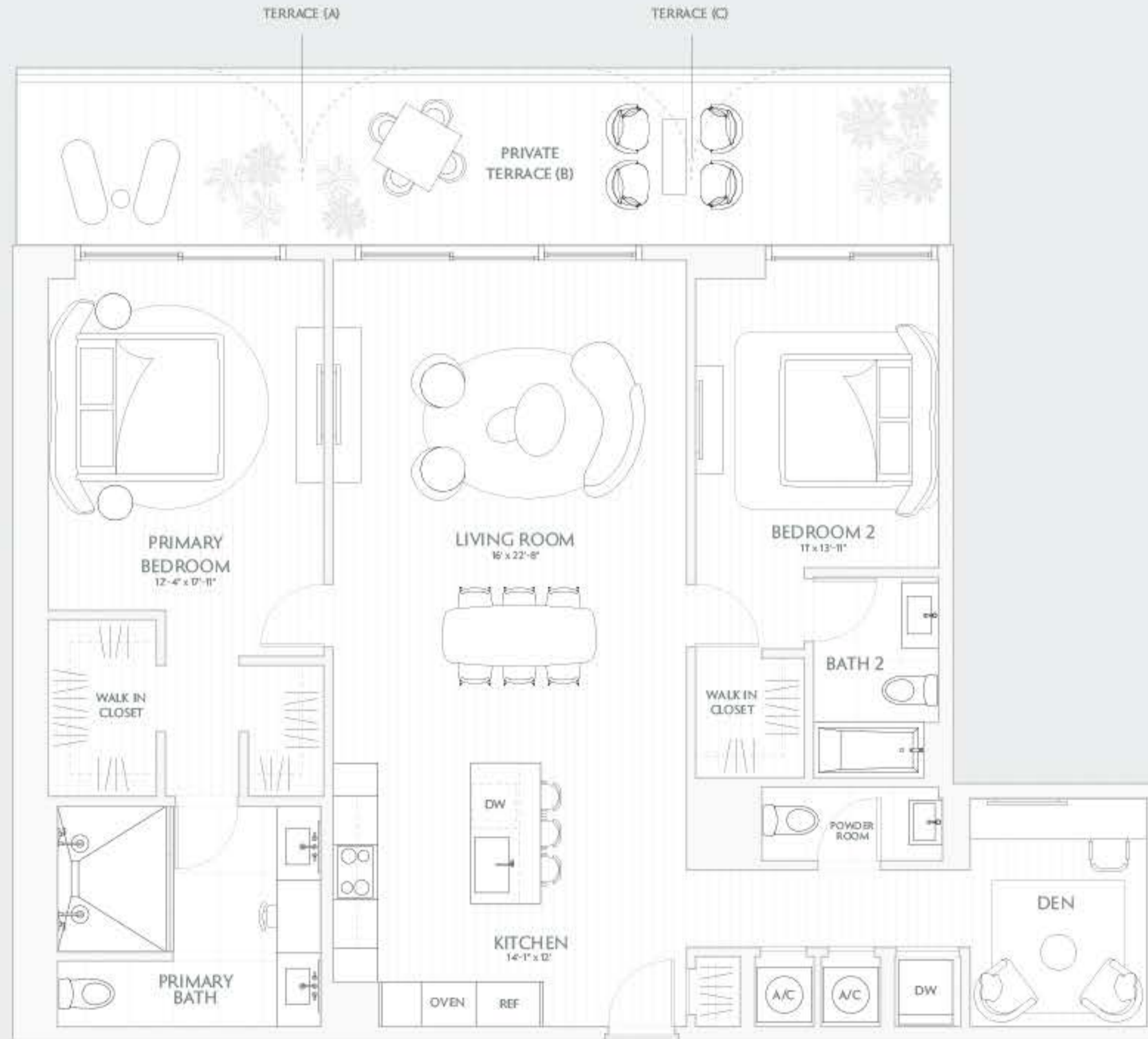
TOWER & SKY  
 RESIDENCE

03

2 BEDROOMS  
 DEN  
 2.5 BATHS  
 PRIVATE TERRACE

INTERIOR 1,600 SF / 148.6 M<sup>2</sup>  
 EXTERIOR 293 SF / 27.2 M<sup>2</sup>  
 TOTAL 1,893 SF / 175.8 M<sup>2</sup>

TERRACE A: 283 SF / 26.1 M<sup>2</sup>  
 TERRACE B: 293 SF / 27.2 M<sup>2</sup>  
 TERRACE C: 283 SF / 26.1 M<sup>2</sup>



Atlantic Ocean

Downtown Skyline & Water

Stated interior square footage is measured to the exterior face of exterior walls and to the centerline of interior demising walls or to the exterior face of walls adjoining corridors or other common elements or shared facilities without excluding areas that may be occupied by columns or other structural components. This method of measurement varies from, and is larger than, the dimensions that would be determined by using the description and the definition of the Unit set forth in the Declaration (which generally only includes the interior airspace between the perimeter walls and excludes structural components). For reference, the area of the unit, determined in accordance with the unit boundaries set forth in the Declaration is set forth in Exhibit "3" to the Declaration. All dimensions are approximate and may vary with actual construction. Note that measurements of rooms set forth on this floor plan are generally taken at the greatest points of each given room (as if the room were a perfect rectangle), without regard for any cutouts or irregularities. Accordingly, the area of the actual room will typically be smaller than the product obtained by multiplying the stated length times width. All floor plans and development plans are subject to change. The Developer expressly reserves the right to make modifications, revisions, and changes it deems desirable in its sole and absolute discretion. All depictions of furnishings, appliances, built-ins, counters, soffits, floor coverings, lighting, landscaping and other matters of detail, including, without limitation, items of finish and decoration, are conceptual only and are not necessarily included in each Unit. Consult your prospectus and Purchase Agreement.

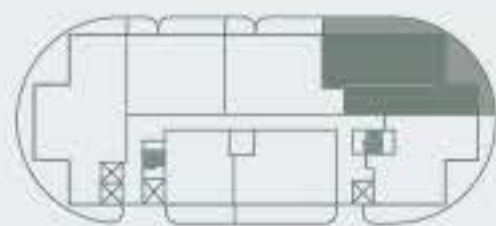
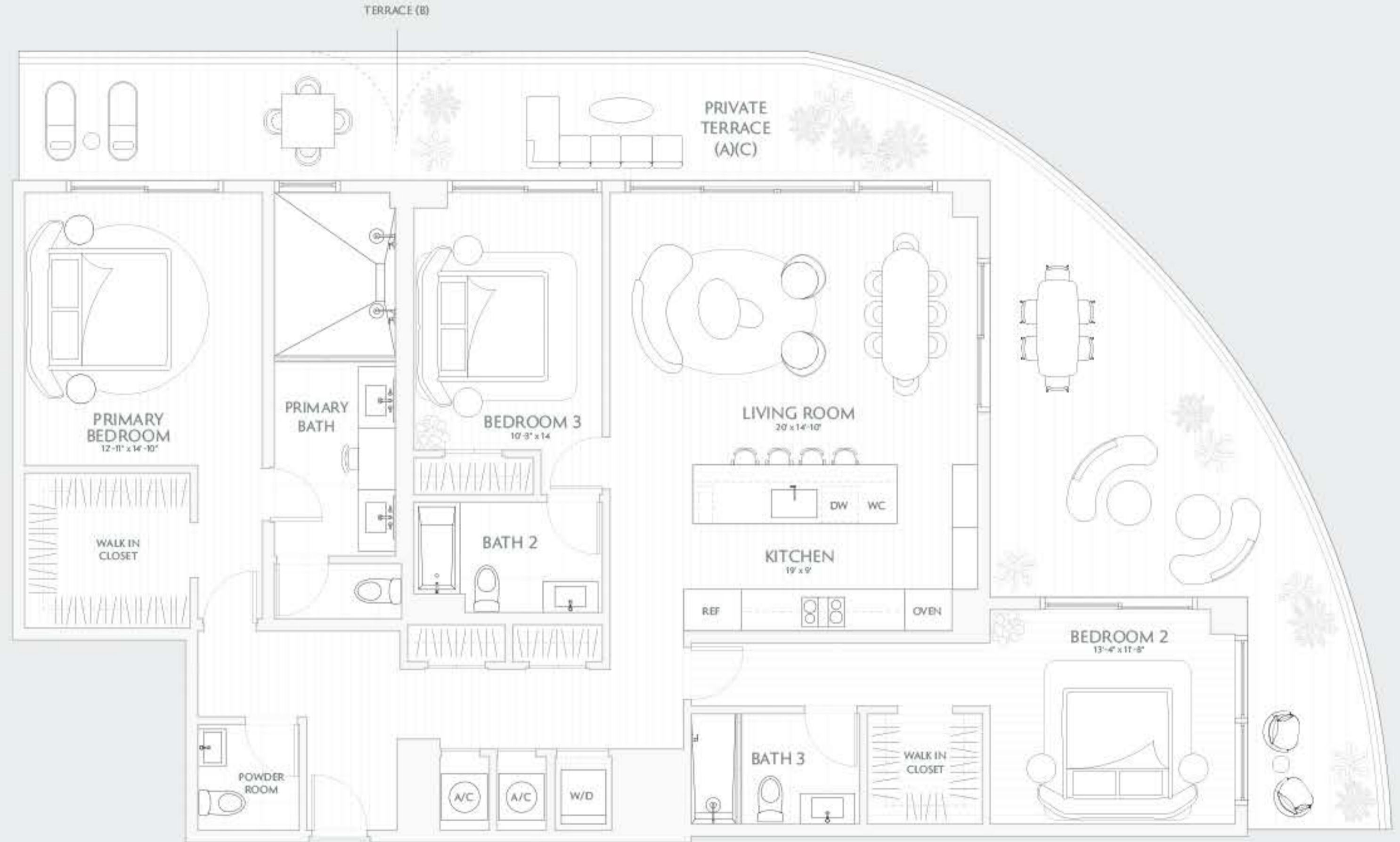
TOWER & SKY  
RESIDENCE

## 04

3 BEDROOMS  
3.5 BATHS  
PRIVATE TERRACE

INTERIOR 1,958 SF / 181.9 M<sup>2</sup>  
EXTERIOR 757 SF / 70.3 M<sup>2</sup>  
TOTAL 2,715 SF / 252.2 M<sup>2</sup>

TERRACE A: 757 SF / 70.3 M<sup>2</sup>  
TERRACE B: 747 SF / 69.3 M<sup>2</sup>  
TERRACE C: 757 SF / 70.3 M<sup>2</sup>



Downtown Skyline  
& Water

Stated interior square footage is measured to the exterior face of exterior walls and to the centerline of interior demising walls or to the exterior face of walls adjoining corridors or other common elements or shared facilities without excluding areas that may be occupied by columns or other structural components. This method of measurement varies from, and is larger than, the dimensions that would be determined by using the description and the definition of the Unit set forth in the Declaration (which generally only includes the interior airspace between the perimeter walls and excludes structural components). For reference, the area of the unit, determined in accordance with the unit boundaries set forth in the Declaration is set forth in Exhibit "3" to the Declaration. All dimensions are approximate and may vary with actual construction. Note that measurements of rooms set forth on this floor plan are generally taken at the greatest points of each given room (as if the room were a perfect rectangle), without regard for any cutouts or irregularities. Accordingly, the area of the actual room will typically be smaller than the product obtained by multiplying the stated length times width. All floor plans and development plans are subject to change. The Developer expressly reserves the right to make modifications, revisions, and changes it deems desirable in its sole and absolute discretion. All depictions of furnishings, appliances, built-ins, counters, soffits, floor coverings, lighting, landscaping and other matters of detail, including, without limitation, items of finish and decoration, are conceptual only and are not necessarily included in each Unit. Consult your prospectus and Purchase Agreement.

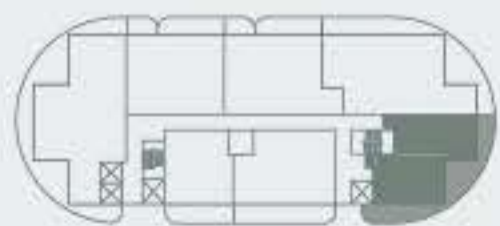
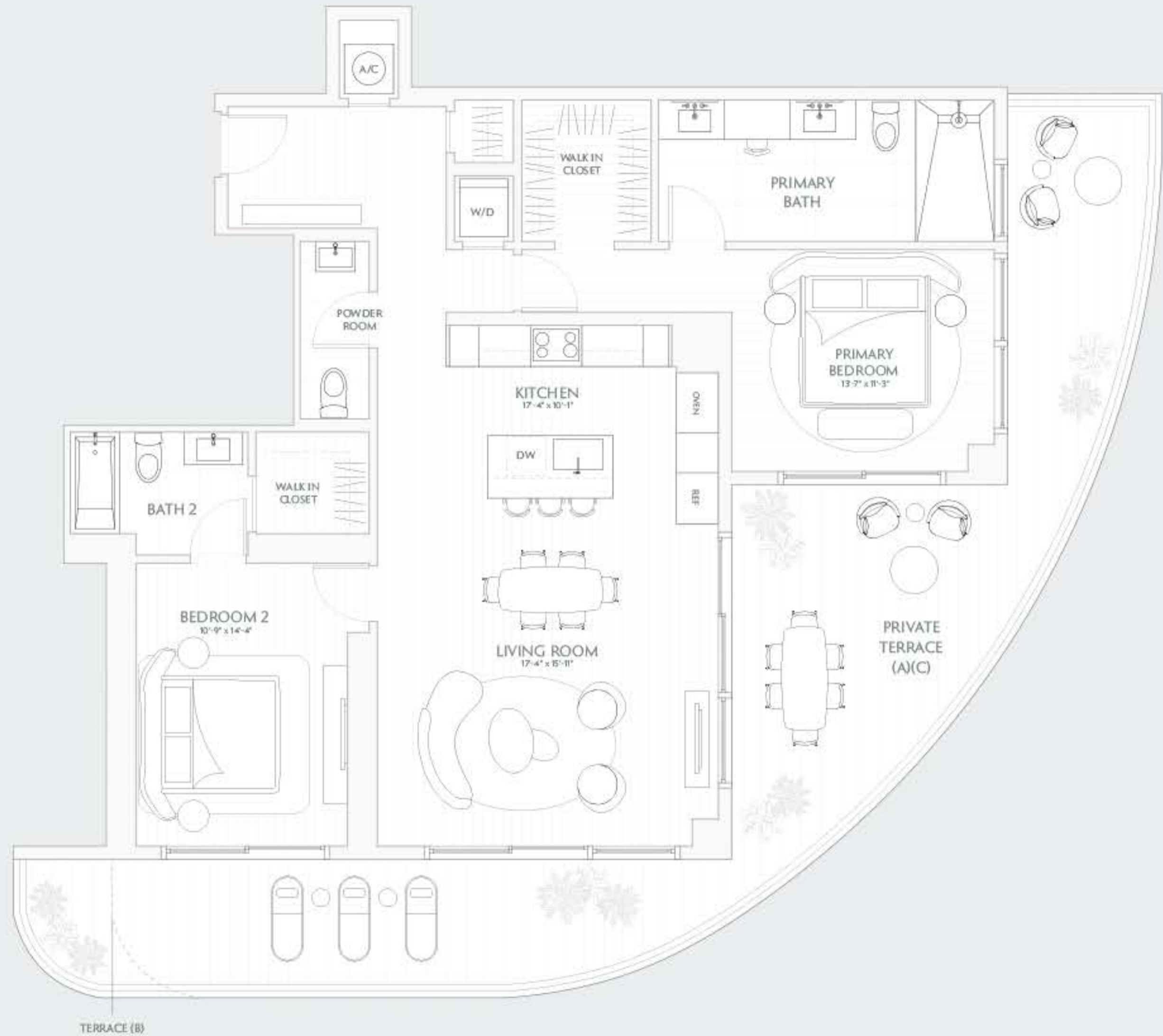
TOWER & SKY  
 RESIDENCE

05

2 BEDROOMS  
 2.5 BATHS  
 PRIVATE TERRACE

INTERIOR 1,370 SF / 127.2 M<sup>2</sup>  
 EXTERIOR 616 SF / 57.2 M<sup>2</sup>  
 TOTAL 1,986 SF / 184.5 M<sup>2</sup>

TERRACE A: 616 SF / 57.2 M<sup>2</sup>  
 TERRACE B: 579 SF / 53.8 M<sup>2</sup>  
 TERRACE C: 616 SF / 57.2 M<sup>2</sup>



Downtown Skyline  
 & Water

Stated interior square footage is measured to the exterior face of exterior walls and to the centerline of interior demising walls or to the exterior face of walls adjoining corridors or other common elements or shared facilities without excluding areas that may be occupied by columns or other structural components. This method of measurement varies from, and is larger than, the dimensions that would be determined by using the description and the definition of the Unit set forth in the Declaration (which generally only includes the interior airspace between the perimeter walls and excludes structural components). For reference, the area of the unit, determined in accordance with the unit boundaries set forth in the Declaration is set forth in Exhibit "3" to the Declaration. All dimensions are approximate and may vary with actual construction. Note that measurements of rooms set forth on this floor plan are generally taken at the greatest points of each given room (as if the room were a perfect rectangle), without regard for any cutouts or irregularities. Accordingly, the area of the actual room will typically be smaller than the product obtained by multiplying the stated length times width. All floor plans and development plans are subject to change. The Developer expressly reserves the right to make modifications, revisions, and changes it deems desirable in its sole and absolute discretion. All depictions of furnishings, appliances, built-ins, counters, soffits, floor coverings, lighting, landscaping and other matters of detail, including, without limitation, items of finish and decoration, are conceptual only and are not necessarily included in each Unit. Consult your prospectus and Purchase Agreement.

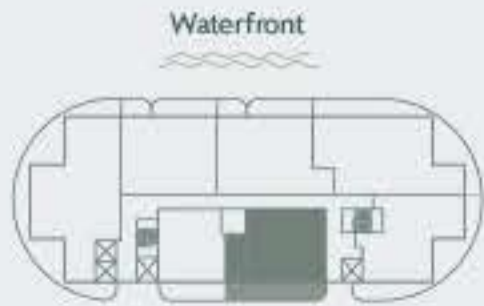
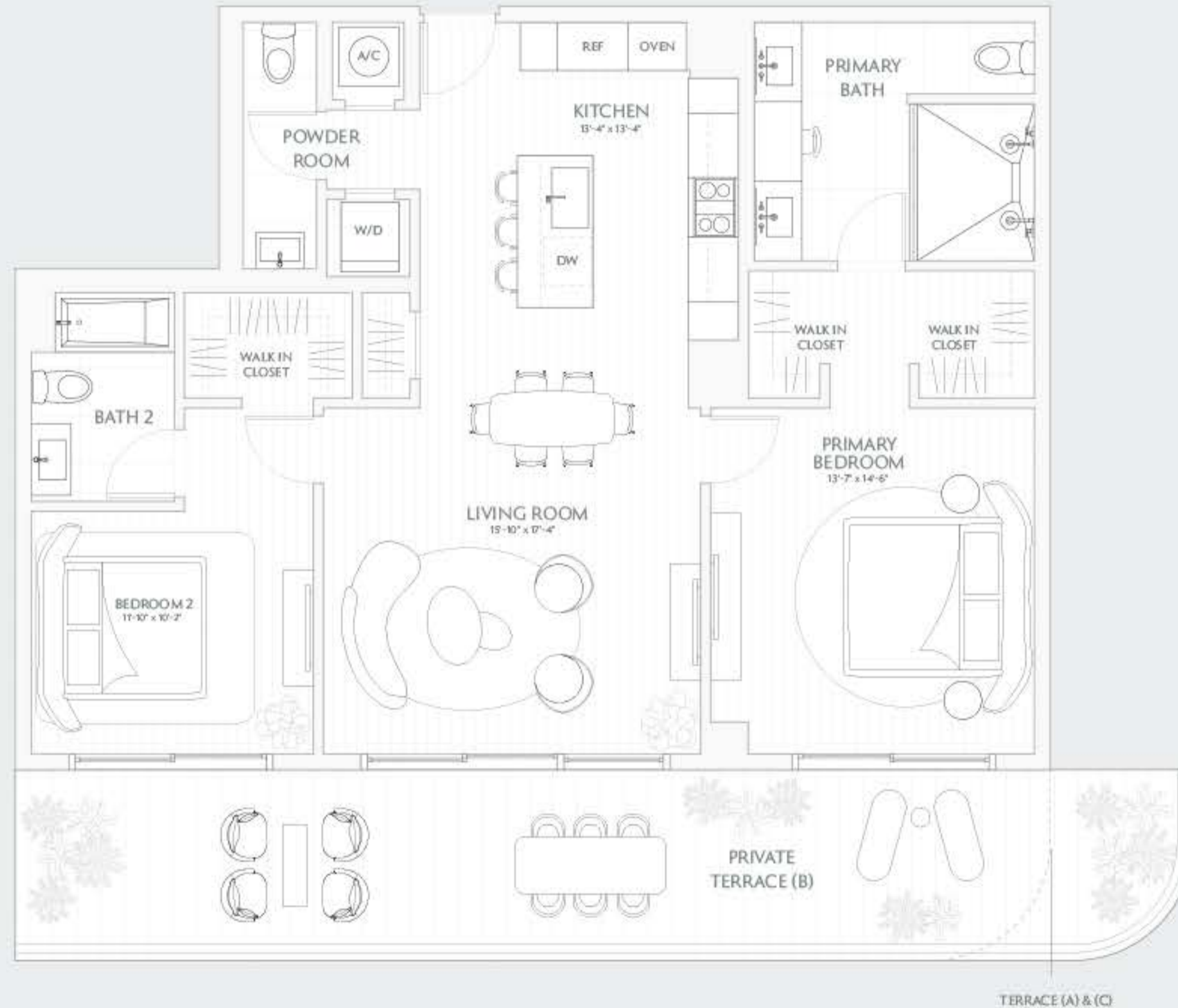
TOWER & SKY  
RESIDENCE

## 06

2 BEDROOMS  
2.5 BATHS  
PRIVATE TERRACE

INTERIOR 1,275 SF / 118.4 M<sup>2</sup>  
EXTERIOR 334 SF / 31 M<sup>2</sup>  
TOTAL 1,609 SF / 149.4 M<sup>2</sup>

TERRACE A: 300 SF / 27.8 M<sup>2</sup>  
TERRACE B: 334 SF / 31 M<sup>2</sup>  
TERRACE C: 300 SF / 27.8 M<sup>2</sup>



Downtown Skyline  
& Water

Stated interior square footage is measured to the exterior face of exterior walls and to the centerline of interior demising walls or to the exterior face of walls adjoining corridors or other common elements or shared facilities without excluding areas that may be occupied by columns or other structural components. This method of measurement varies from, and is larger than, the dimensions that would be determined by using the description and the definition of the Unit set forth in the Declaration (which generally only includes the interior airspace between the perimeter walls and excludes structural components). For reference, the area of the unit, determined in accordance with the unit boundaries set forth in the Declaration is set forth in Exhibit "3" to the Declaration. All dimensions are approximate and may vary with actual construction. Note that measurements of rooms set forth on this floor plan are generally taken at the greatest points of each given room (as if the room were a perfect rectangle), without regard for any cutouts or irregularities. Accordingly, the area of the actual room will typically be smaller than the product obtained by multiplying the stated length times width. All floor plans and development plans are subject to change. The Developer expressly reserves the right to make modifications, revisions, and changes it deems desirable in its sole and absolute discretion. All depictions of furnishings, appliances, built-ins, counters, soffits, floor coverings, lighting, landscaping and other matters of detail, including, without limitation, items of finish and decoration, are conceptual only and are not necessarily included in each Unit. Consult your prospectus and Purchase Agreement.

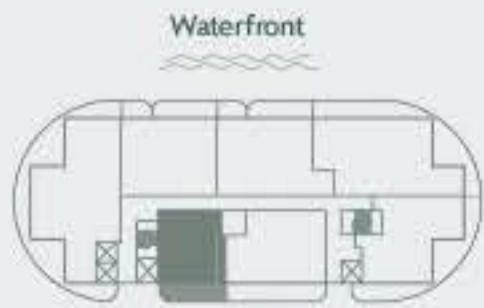
TOWER & SKY  
 RESIDENCE

07

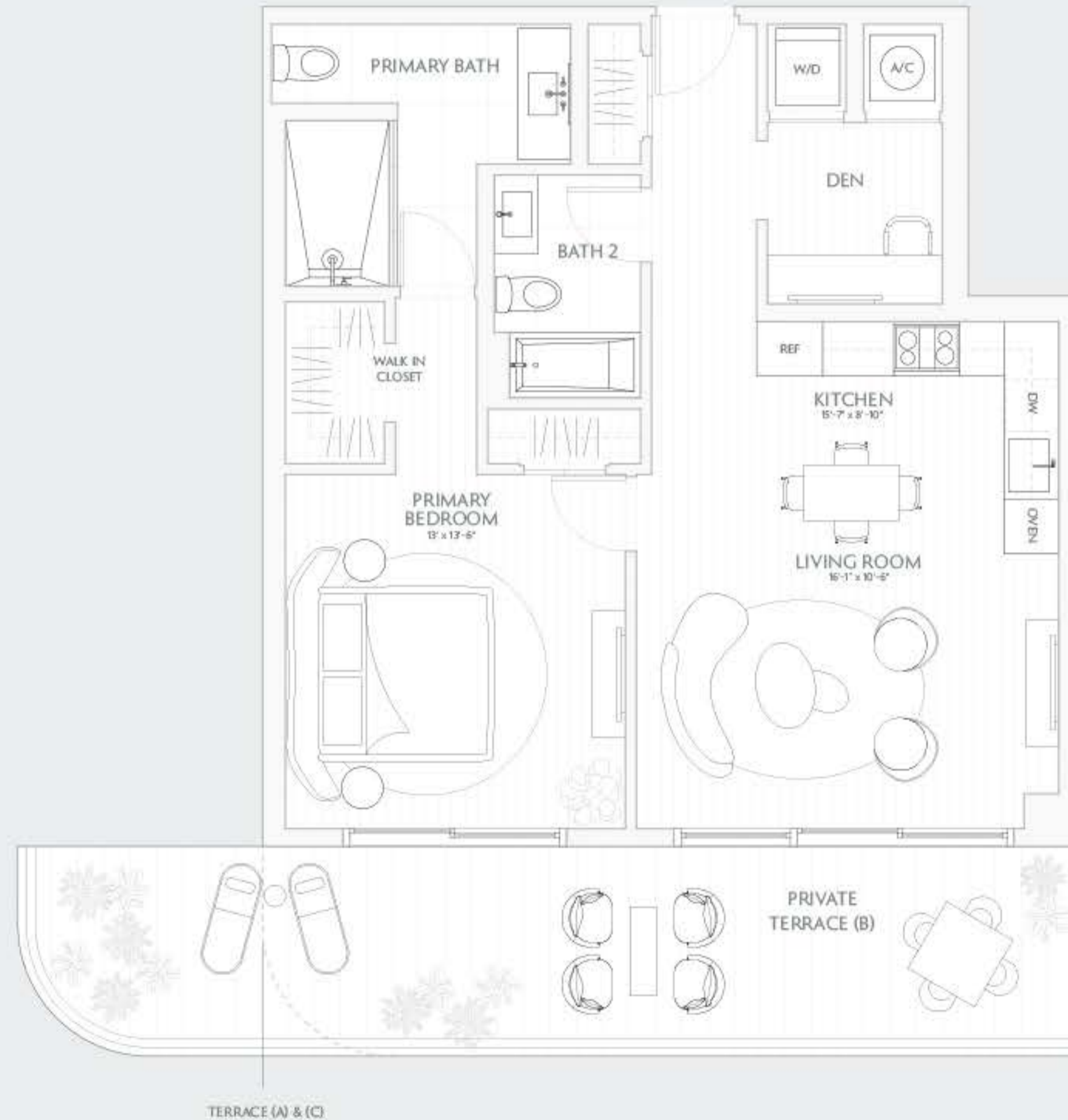
- 1 BEDROOM
- DEN
- 2 BATHS
- PRIVATE TERRACE

INTERIOR 915 SF / 85 M<sup>2</sup>  
 EXTERIOR 289 SF / 26.8 M<sup>2</sup>  
 TOTAL 1,204 SF / 111.8 M<sup>2</sup>

TERRACE A: 213 SF / 19.7 M<sup>2</sup>  
 TERRACE B: 289 SF / 26.8 M<sup>2</sup>  
 TERRACE C: 213 SF / 19.7 M<sup>2</sup>



Downtown Skyline  
 & Water



Stated interior square footage is measured to the exterior face of exterior walls and to the centerline of interior demising walls or to the exterior face of walls adjoining corridors or other common elements or shared facilities without excluding areas that may be occupied by columns or other structural components. This method of measurement varies from, and is larger than, the dimensions that would be determined by using the description and the definition of the Unit set forth in the Declaration (which generally only includes the interior airspace between the perimeter walls and excludes structural components). For reference, the area of the unit, determined in accordance with the unit boundaries set forth in the Declaration is set forth in Exhibit "3" to the Declaration. All dimensions are approximate and may vary with actual construction. Note that measurements of rooms set forth on this floor plan are generally taken at the greatest points of each given room (as if the room were a perfect rectangle), without regard for any cutouts or irregularities. Accordingly, the area of the actual room will typically be smaller than the product obtained by multiplying the stated length times width. All floor plans and development plans are subject to change. The Developer expressly reserves the right to make modifications, revisions, and changes it deems desirable in its sole and absolute discretion. All depictions of furnishings, appliances, built-ins, counters, soffits, floor coverings, lighting, landscaping and other matters of detail, including, without limitation, items of finish and decoration, are conceptual only and are not necessarily included in each Unit. Consult your prospectus and Purchase Agreement.