

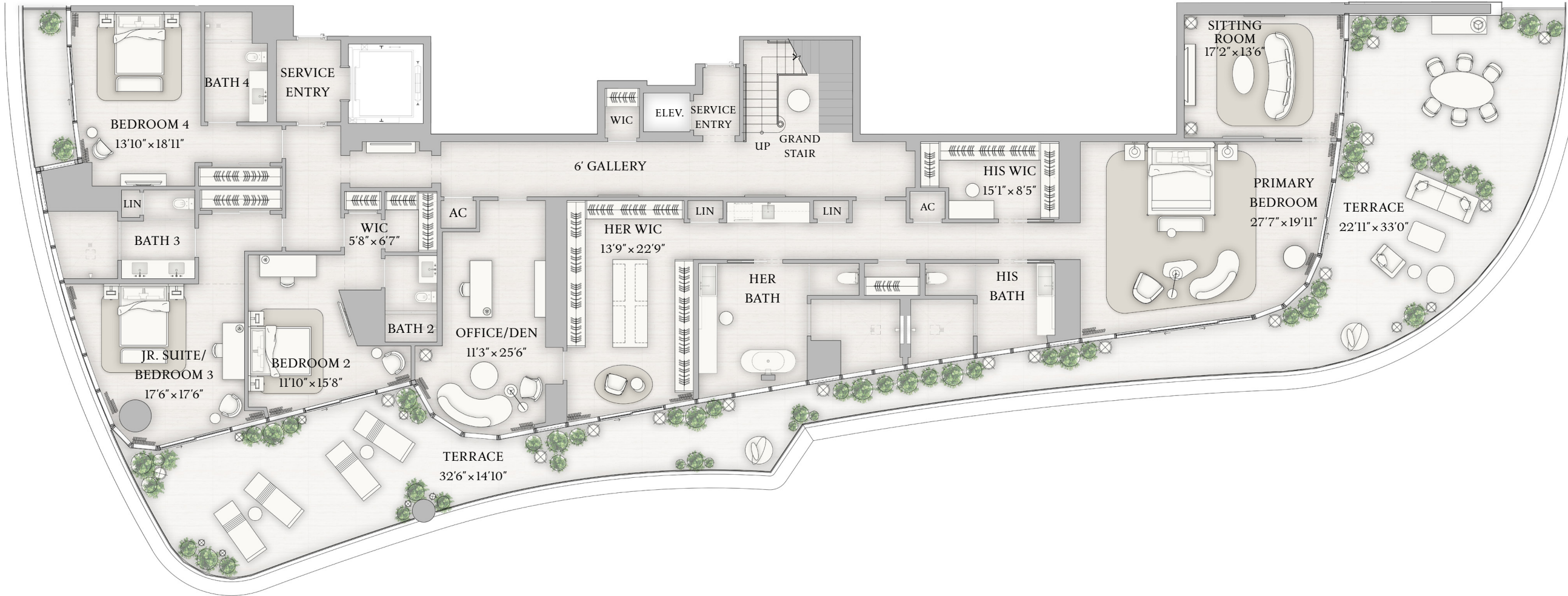


PENTHOUSE  
UPH B  
LOWER LEVEL

LOWER LEVEL INTERIOR  
4,744 SF | 441 SQM  
LOWER LEVEL EXTERIOR  
1,845 SF | 172 SQM

TOTAL INTERIOR  
9,968 SF | 927 SQM  
TOTAL EXTERIOR  
5,546 SF | 517 SQM

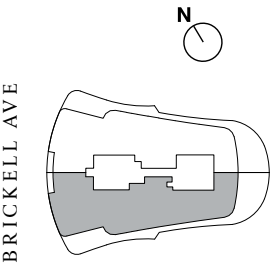
- 5 BEDROOMS
- 7 BATHROOMS
- 2 POWDER ROOMS
- PRIVATE ROOF DECK
- PRIVATE POOL & SPA
- SUMMER KITCHEN
- WINDOWED SERVICE SUITE
- INTERNAL ELEVATOR



BISCAYNE BAY

The dimensions stated for this Unit floor plan are approximate because there are various recognized methods for calculating the square footage of a Unit. The square footage stated here is calculated from the exterior boundaries of the exterior walls to the centerline of interior demising walls without deductions for cutouts, curves, or architectural features. This method typically results in quoted dimensions greater than the dimensions that would be determined by using other accepted methods. The definition of "Unit" and the calculation method to be relied upon is set forth in Developer's prospectus and the method set forth in the Developer's prospectus may result in a square footage calculation less than the method used here. Dimensions and Unit configuration may change during construction. The furniture illustrated is not included with purchase; the floorplan layout is not a guaranty on your use of space but is one example of uses of space. Consult the Developer's prospectus to understand the calculation of the Unit square footage and dimensions and what is included with purchase. Prices are not based on the square footage no matter the method of calculation of Unit dimensions and all prices are subject to change at any time.

ORAL REPRESENTATIONS CANNOT BE RELIED UPON AS CORRECTLY STATING REPRESENTATIONS OF THE DEVELOPER. FOR CORRECT REPRESENTATIONS, MAKE REFERENCE TO THIS BROCHURE AND TO THE DOCUMENTS REQUIRED BY SECTION 718.503, FLORIDA STATUTES, TO BE FURNISHED BY A DEVELOPER TO A BUYER OR LESSEE. The St. Regis Residences, Miami are developed by 1809 Brickell Property Owner, LLC ("Developer"). The St. Regis Residences, Miami are not owned, developed, or sold by Marriott International, Inc. or its affiliates ("Marriott"). The Developer uses the St. Regis marks under a license from Marriott, which has not confirmed the accuracy of any of the statements or representations made about the project by Developer. Sketches, renderings, or photographs depicting a floor plan are proposed only and the Developer reserves the right to modify, revise, or withdraw any or all of the same in Developer's sole discretion without prior notice. Locations and layouts of windows, doors, closets, plumbing fixtures, and structural and architectural design elements may vary from concept to actual construction. All depictions of appliances, plumbing fixtures, counters, countertops, cabinets, soffits, floor coverings, and other matters of design and décor detail or floor plans are conceptual and such drawings shown should not be relied upon as representations, express or implied, of the final detail of The St. Regis Residences, Miami or any Unit. There is no guarantee that any proposed hotel brands will be involved as depicted or at all upon, or following, the completion of The St. Regis Residences, Miami. Consult the prospectus of the Developer to understand this offering, the amenities, the proposed budgets, terms, conditions, specifications, fees, Unit dimensions, site plans, and to learn what is included with purchase and by payment of regular assessments. All prices are subject to change at any time and without notice and do not include optional features, design packages, furniture packages, or premiums for upgrades to any Unit. © 1809 Brickell Property Owner, LLC 2023.





ST REGIS  
MIAMI  
THE RESIDENCES

SKY VILLA

19 A

LOWER LEVEL

Future residences located at:  
1809 Brickell Avenue  
Miami, Florida 33129  
MiamiSRR.com  
786 713 3556



ORAL REPRESENTATIONS CANNOT BE RELIED UPON AS CORRECTLY STATING REPRESENTATIONS OF THE DEVELOPER. FOR CORRECT REPRESENTATIONS, MAKE REFERENCE TO THIS BROCHURE AND TO THE DOCUMENTS REQUIRED BY SECTION 718.503, FLORIDA STATUTES, TO BE FURNISHED BY A DEVELOPER TO A BUYER OR LESSEE.

The St. Regis Residences, Miami are developed by 1809 Brickell Property Owner, LLC (“Developer”). The St. Regis Residences, Miami are not owned, developed, or sold by Marriott International, Inc. or its affiliates (“Marriott”). The Developer uses the St. Regis marks under a license from Marriott, which has not confirmed the accuracy of any of the statements or representations made about the project by Developer. Sketches, renderings, or photographs depicting a floor plan are proposed only and the Developer reserves the right to modify, revise, or withdraw any or all of the same in Developer’s sole discretion without prior notice. Locations and layouts of windows, doors, closets, plumbing fixtures, and structural and architectural design elements may vary from concept to actual construction. All depictions of appliances, plumbing fixtures, counters, countertops, cabinets, soffits, floor coverings, and other matters of design and décor detail or floor plans are conceptual and such drawings shown should not be relied upon as representations, express or implied, of the final detail of The St. Regis Residences, Miami or any Unit. There is no guarantee that any proposed hotel brands will be involved as depicted or at all upon, or following, the completion of The St. Regis Residences, Miami. Consult the prospectus of the Developer to understand this offering, the amenities, the proposed budgets, terms, conditions, specifications, fees, Unit dimensions, site plans, and to learn what is included with purchase and by payment of regular assessments. All prices are subject to change at any time and without notice and do not include optional features, design packages, furniture packages, or premiums for upgrades to any Unit. © 1809 Brickell Property Owner, LLC 2024.

5 BEDROOMS | 7 BATHROOMS | 2 POWDER ROOMS  
INTERIOR: 4,805 SF | 446 SQM   EXTERIOR: 1,675 SF | 156 SQM  
TOTAL INTERIOR: 9,277 SF | 862 SQM   TOTAL EXTERIOR: 2,253 SF | 209 SQM





SKY VILLA

19 A

LOWER LEVEL

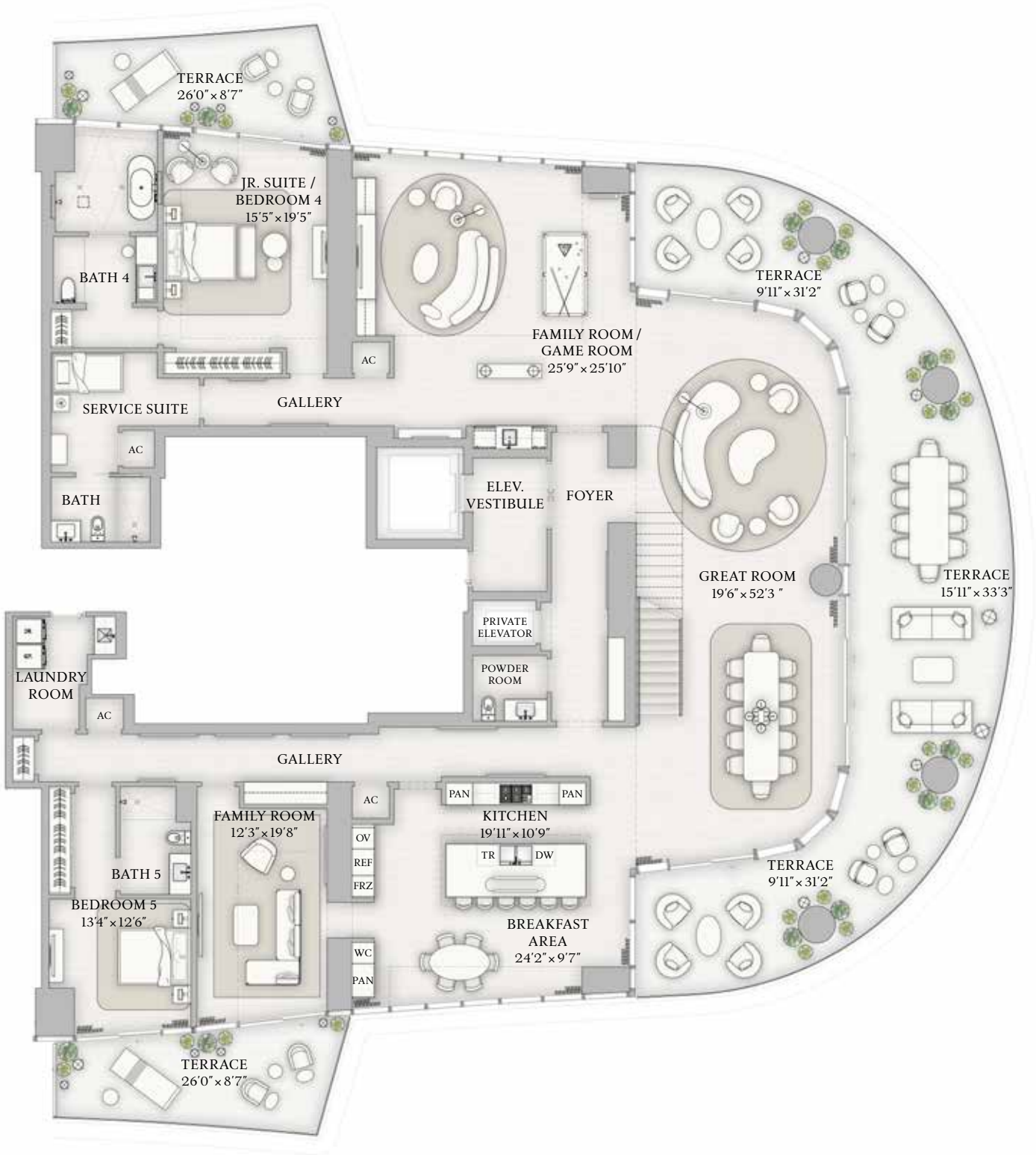
LOWER LEVEL INTERIOR  
4,805 SF | 446 SQM

LOWER LEVEL EXTERIOR  
1,675 SF | 156 SQM

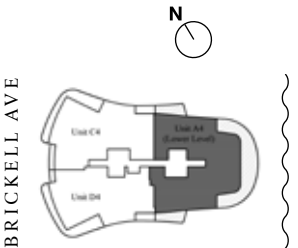
TOTAL INTERIOR  
9,277 SF | 862 SQM

TOTAL EXTERIOR  
2,253 SF | 209 SQM

- 5 BEDROOMS
- 7 BATHROOMS
- 2 POWDER ROOMS
- DOUBLE HEIGHT GREAT ROOM
- EXPANSIVE DOUBLE HEIGHT TERRACE
- PRIMARY SUITE WITH OFFICE
- FAMILY ROOM / GAME ROOM
- FAMILY ROOM / BEDROOM 6
- INTERNAL ELEVATOR
- SERVICE SUITE



The dimensions stated for this Unit floor plan are approximate because there are various recognized methods for calculating the square footage of a Unit. The square footage stated here is calculated from the exterior boundaries of the exterior walls to the centerline of interior demising walls without deductions for cutouts, curves, or architectural features. This method typically results in quoted dimensions greater than the dimensions that would be determined by using other accepted methods. The definition of "Unit" and the calculation method to be relied upon is set forth in Developer's prospectus and the method set forth in the Developer's prospectus may result in a square footage calculation less than the method used here. Dimensions and Unit configuration may change during construction. The furniture illustrated is not included with purchase; the floorplan layout is not a guarantee on your use of space but is one example of uses of space. Consult the Developer's prospectus to understand the calculation of the Unit square footage and dimensions and what is included with purchase. Prices are not based on the square footage no matter the method of calculation of Unit dimensions and all prices are subject to change at any time.





ST REGIS  
MIAMI  
THE RESIDENCES

SKY VILLA


19 A

UPPER LEVEL

Future residences located at:  
1809 Brickell Avenue  
Miami, Florida 33129  
MiamiSRR.com  
786 713 3556



ORAL REPRESENTATIONS CANNOT BE RELIED UPON AS CORRECTLY STATING REPRESENTATIONS OF THE DEVELOPER. FOR CORRECT REPRESENTATIONS, MAKE REFERENCE TO THIS BROCHURE AND TO THE DOCUMENTS REQUIRED BY SECTION 718.503, FLORIDA STATUTES, TO BE FURNISHED BY A DEVELOPER TO A BUYER OR LESSEE.

The St. Regis Residences, Miami are developed by 1809 Brickell Property Owner, LLC ("Developer"). The St. Regis Residences, Miami are not owned, developed, or sold by Marriott International, Inc. or its affiliates ("Marriott"). The Developer uses the St. Regis marks under a license from Marriott, which has not confirmed the accuracy of any of the statements or representations made about the project by Developer. Sketches, renderings, or photographs depicting a floor plan are proposed only and the Developer reserves the right to modify, revise, or withdraw any or all of the same in Developer's sole discretion without prior notice. Locations and layouts of windows, doors, closets, plumbing fixtures, and structural and architectural design elements may vary from concept to actual construction. All depictions of appliances, plumbing fixtures, counters, countertops, cabinets, soffits, floor coverings, and other matters of design and décor detail or floor plans are conceptual and such drawings shown should not be relied upon as representations, express or implied, of the final detail of The St. Regis Residences, Miami or any Unit. There is no guarantee that any proposed hotel brands will be involved as depicted or at all upon, or following, the completion of The St. Regis Residences, Miami. Consult the prospectus of the Developer to understand this offering, the amenities, the proposed budgets, terms, conditions, specifications, fees, Unit dimensions, site plans, and to learn what is included with purchase and by payment of regular assessments. All prices are subject to change at any time and without notice and do not include optional features, design packages, furniture packages, or premiums for upgrades to any Unit. © 1809 Brickell Property Owner, LLC 2024. 

5 BEDROOMS | 7 BATHROOMS | 2 POWDER ROOMS  
INTERIOR: 4,472 SF | 416 SQM   EXTERIOR: 578 SF | 53 SQM  
TOTAL INTERIOR: 9,277 SF | 862 SQM   TOTAL EXTERIOR: 2,253 SF | 209 SQM





SKY VILLA

19 A

UPPER LEVEL

UPPER LEVEL INTERIOR

4,472 SF | 416 SQM

UPPER LEVEL EXTERIOR

578 SF | 53 SQM

TOTAL INTERIOR

9,277 SF | 862 SQM

TOTAL EXTERIOR

2,253 SF | 209 SQM

5 BEDROOMS

7 BATHROOMS

2 POWDER ROOMS

DOUBLE HEIGHT GREAT ROOM

EXPANSIVE DOUBLE HEIGHT TERRACE

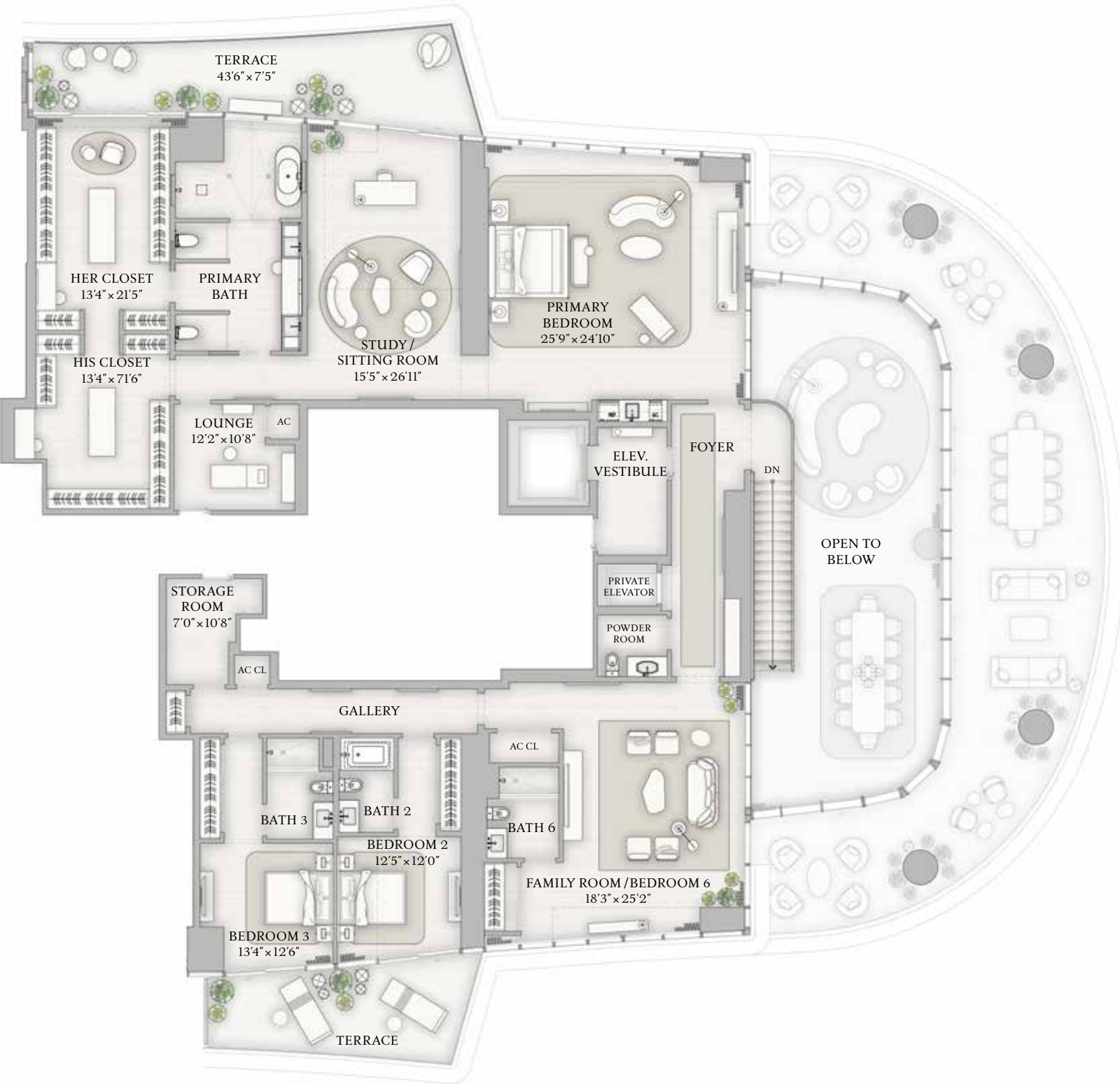
PRIMARY SUITE WITH OFFICE

FAMILY ROOM / GAME ROOM

FAMILY ROOM / BEDROOM 6

INTERNAL ELEVATOR

SERVICE SUITE



BISCAYNE BAY

The dimensions stated for this Unit floor plan are approximate because there are various recognized methods for calculating the square footage of a Unit. The square footage stated here is calculated from the exterior boundaries of the exterior walls to the centerline of interior demising walls without deductions for cutouts, curves, or architectural features. This method typically results in quoted dimensions greater than the dimensions that would be determined by using other accepted methods. The definition of "Unit" and the calculation method to be relied upon is set forth in Developer's prospectus and the method set forth in the Developer's prospectus may result in a square footage calculation less than the method used here. Dimensions and Unit configuration may change during construction. The furniture illustrated is not included with purchase; the floorplan layout is not a guarantee on your use of space but is one example of uses of space. Consult the Developer's prospectus to understand the calculation of the Unit square footage and dimensions and what is included with purchase. Prices are not based on the square footage no matter the method of calculation of Unit dimensions and all prices are subject to change at any time.

BRICKELL AVE





PENTHOUSE  
UPH A  
ROOF TERRACE

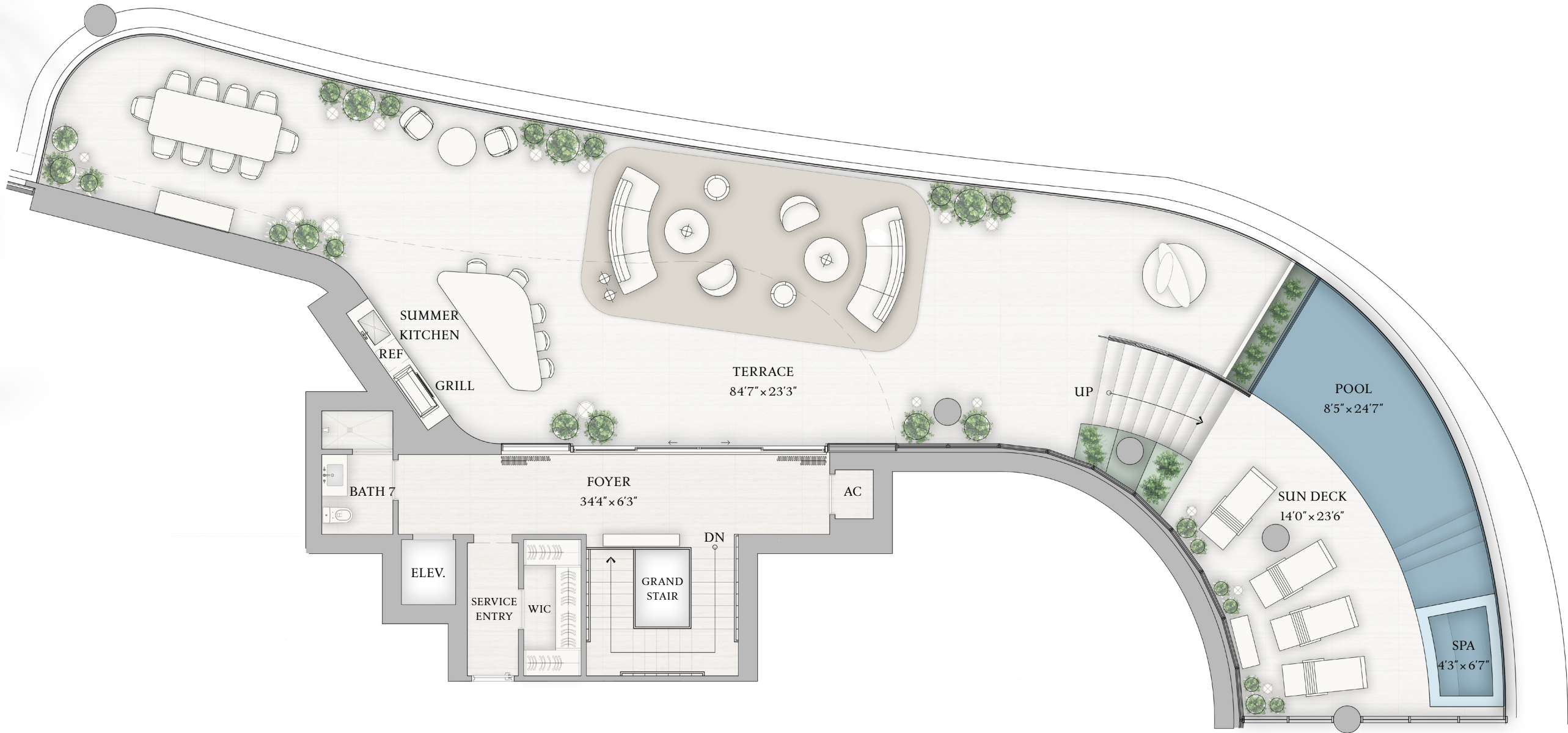
ROOF TERRACE INTERIOR  
533 SF | 50 SQM

ROOF TERRACE EXTERIOR  
2,309 SF | 215 SQM

TOTAL INTERIOR  
10,003 SF | 930 SQM

TOTAL EXTERIOR  
5,465 SF | 509 SQM

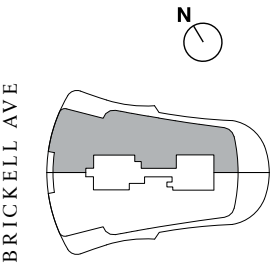
- 5 BEDROOMS
- 7 BATHROOMS
- 2 POWDER ROOMS
- PRIVATE ROOF DECK
- PRIVATE POOL & SPA
- SUMMER KITCHEN
- WINDOWED SERVICE SUITE
- INTERNAL ELEVATOR



BISCAYNE BAY

The dimensions stated for this Unit floor plan are approximate because there are various recognized methods for calculating the square footage of a Unit. The square footage stated here is calculated from the exterior boundaries of the exterior walls to the centerline of interior demising walls without deductions for cutouts, curves, or architectural features. This method typically results in quoted dimensions greater than the dimensions that would be determined by using other accepted methods. The definition of "Unit" and the calculation method to be relied upon is set forth in Developer's prospectus and the method set forth in the Developer's prospectus may result in a square footage calculation less than the method used here. Dimensions and Unit configuration may change during construction. The furniture illustrated is not included with purchase; the floorplan layout is not a guaranty on your use of space but is one example of uses of space. Consult the Developer's prospectus to understand the calculation of the Unit square footage and dimensions and what is included with purchase. Prices are not based on the square footage no matter the method of calculation of Unit dimensions and all prices are subject to change at any time.

ORAL REPRESENTATIONS CANNOT BE RELIED UPON AS CORRECTLY STATING REPRESENTATIONS OF THE DEVELOPER. FOR CORRECT REPRESENTATIONS, MAKE REFERENCE TO THIS BROCHURE AND TO THE DOCUMENTS REQUIRED BY SECTION 718.503, FLORIDA STATUTES, TO BE FURNISHED BY A DEVELOPER TO A BUYER OR LESSEE. The St. Regis Residences, Miami are developed by 1809 Brickell Property Owner, LLC ("Developer"). The St. Regis Residences, Miami are not owned, developed, or sold by Marriott International, Inc. or its affiliates ("Marriott"). The Developer uses the St. Regis marks under a license from Marriott, which has not confirmed the accuracy of any of the statements or representations made about the project by Developer. Sketches, renderings, or photographs depicting a floor plan are proposed only and the Developer reserves the right to modify, revise, or withdraw any or all of the same in Developer's sole discretion without prior notice. Locations and layouts of windows, doors, closets, plumbing fixtures, and structural and architectural design elements may vary from concept to actual construction. All depictions of appliances, plumbing fixtures, counters, countertops, cabinets, soffits, floor coverings, and other matters of design and décor detail or floor plans are conceptual and such drawings shown should not be relied upon as representations, express or implied, of the final detail of The St. Regis Residences, Miami or any Unit. There is no guarantee that any proposed hotel brands will be involved as depicted or at all upon, or following, the completion of The St. Regis Residences, Miami. Consult the prospectus of the Developer to understand this offering, the amenities, the proposed budgets, terms, conditions, specifications, fees, Unit dimensions, site plans, and to learn what is included with purchase and by payment of regular assessments. All prices are subject to change at any time and without notice and do not include optional features, design packages, furniture packages, or premiums for upgrades to any Unit. © 1809 Brickell Property Owner, LLC 2023.







PENTHOUSE  
UPH A  
UPPER LEVEL

UPPER LEVEL INTERIOR

4,735 SF | 440 SQM

UPPER LEVEL EXTERIOR

1,311 SF | 122 SQM

TOTAL INTERIOR

10,003 SF | 930 SQM

TOTAL EXTERIOR

5,465 SF | 509 SQM

5 BEDROOMS

7 BATHROOMS

2 POWDER ROOMS

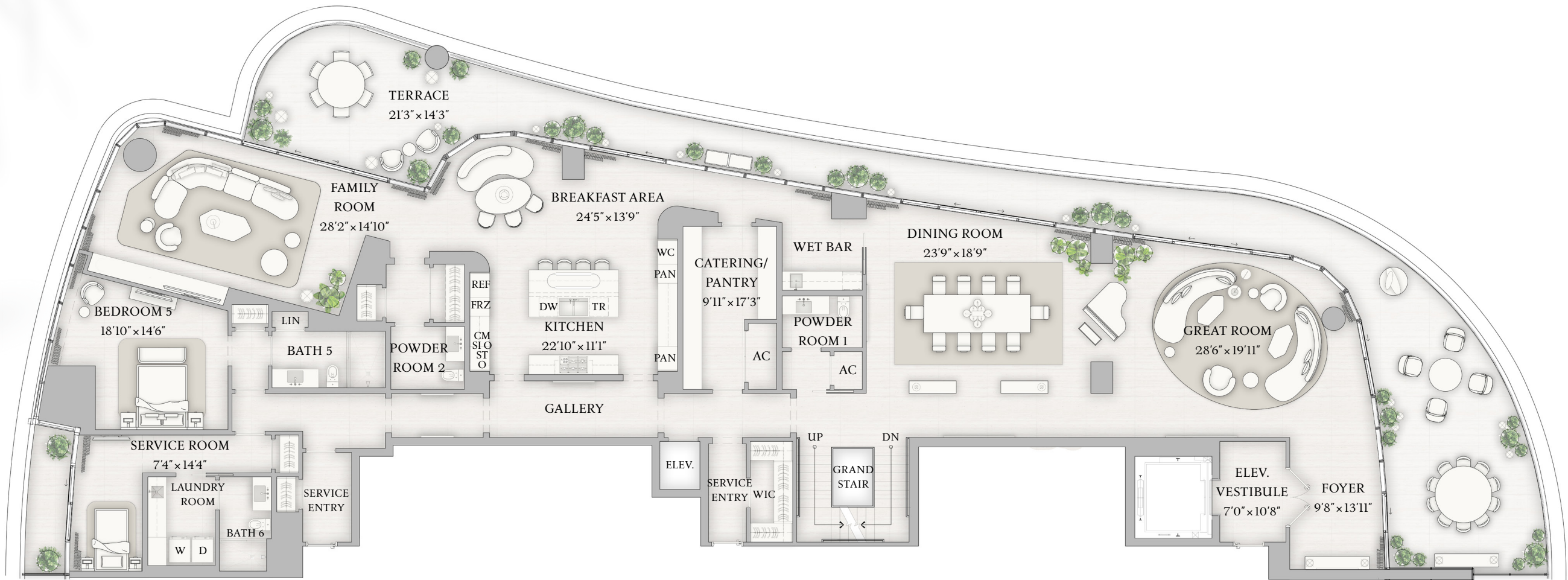
PRIVATE ROOF DECK

PRIVATE POOL & SPA

SUMMER KITCHEN

WINDOWED SERVICE SUITE

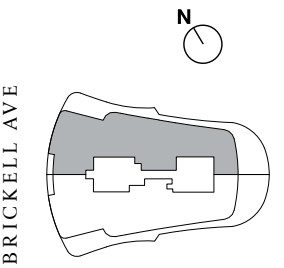
INTERNAL ELEVATOR



BISCAYNE BAY

The dimensions stated for this Unit floor plan are approximate because there are various recognized methods for calculating the square footage of a Unit. The square footage stated here is calculated from the exterior boundaries of the exterior walls to the centerline of interior demising walls without deductions for cutouts, curves, or architectural features. This method typically results in quoted dimensions greater than the dimensions that would be determined by using other accepted methods. The definition of "Unit" and the calculation method to be relied upon is set forth in Developer's prospectus and the method set forth in the Developer's prospectus may result in a square footage calculation less than the method used here. Dimensions and Unit configuration may change during construction. The furniture illustrated is not included with purchase; the floorplan layout is not a guaranty on your use of space but is one example of uses of space. Consult the Developer's prospectus to understand the calculation of the Unit square footage and dimensions and what is included with purchase. Prices are not based on the square footage no matter the method of calculation of Unit dimensions and all prices are subject to change at any time.

ORAL REPRESENTATIONS CANNOT BE RELIED UPON AS CORRECTLY STATING REPRESENTATIONS OF THE DEVELOPER. FOR CORRECT REPRESENTATIONS, MAKE REFERENCE TO THIS BROCHURE AND TO THE DOCUMENTS REQUIRED BY SECTION 718.503, FLORIDA STATUTES, TO BE FURNISHED BY A DEVELOPER TO A BUYER OR LESSEE. The St. Regis Residences, Miami are developed by 1809 Brickell Property Owner, LLC ("Developer"). The St. Regis Residences, Miami are not owned, developed, or sold by Marriott International, Inc. or its affiliates ("Marriott"). The Developer uses the St. Regis marks under a license from Marriott, which has not confirmed the accuracy of any of the statements or representations made about the project by Developer. Sketches, renderings, or photographs depicting a floor plan are proposed only and the Developer reserves the right to modify, revise, or withdraw any or all of the same in Developer's sole discretion without prior notice. Locations and layouts of windows, doors, closets, plumbing fixtures, and structural and architectural design elements may vary from concept to actual construction. All depictions of appliances, plumbing fixtures, counters, countertops, cabinets, soffits, floor coverings, and other matters of design and décor detail or floor plans are conceptual and such drawings shown should not be relied upon as representations, express or implied, of the final detail of The St. Regis Residences, Miami or any Unit. There is no guarantee that any proposed hotel brands will be involved as depicted or at all upon, or following, the completion of The St. Regis Residences, Miami. Consult the prospectus of the Developer to understand this offering, the amenities, the proposed budgets, terms, conditions, specifications, fees, Unit dimensions, site plans, and to learn what is included with purchase and by payment of regular assessments. All prices are subject to change at any time and without notice and do not include optional features, design packages, furniture packages, or premiums for upgrades to any Unit. © 1809 Brickell Property Owner, LLC 2023.



BRICKELL AVE





PENTHOUSE

# UPH B

ROOF TERRACE

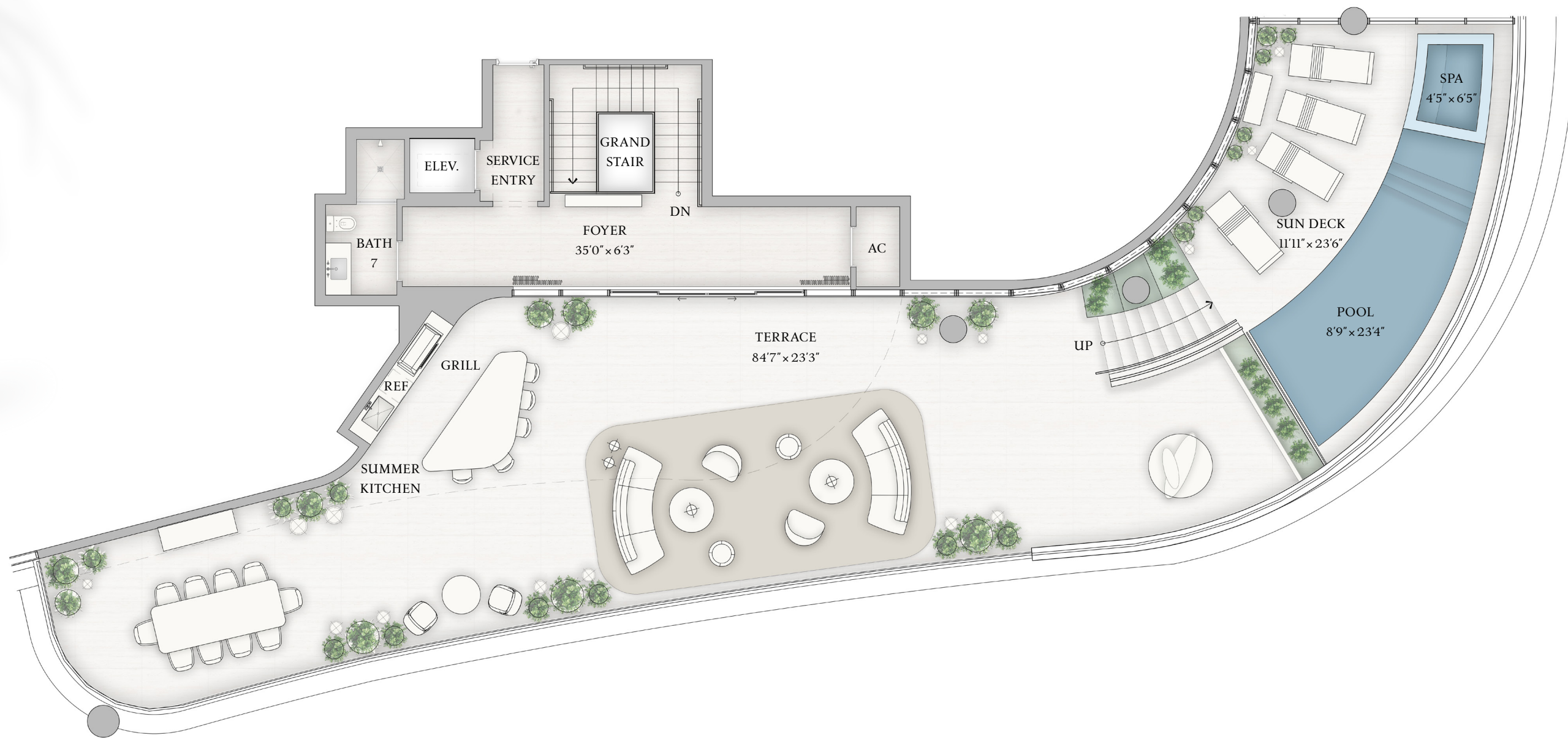
ROOF TERRACE INTERIOR  
480 SF | 45 SQM

ROOF TERRACE EXTERIOR  
2,390 SF | 223 SQM

TOTAL INTERIOR  
9,968 SF | 927 SQM

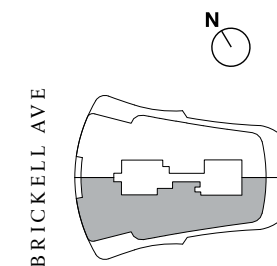
TOTAL EXTERIOR  
5,546 SF | 517 SQM

5 BEDROOMS  
7 BATHROOMS  
2 POWDER ROOMS  
PRIVATE ROOF DECK  
PRIVATE POOL & SPA  
SUMMER KITCHEN  
WINDOWED SERVICE SUITE  
INTERNAL ELEVATOR



The dimensions stated for this Unit floor plan are approximate because there are various recognized methods for calculating the square footage of a Unit. The square footage stated here is calculated from the exterior boundaries of the exterior walls to the centerline of interior demising walls without deductions for cutouts, curves, or architectural features. This method typically results in quoted dimensions greater than the dimensions that would be determined by using other accepted methods. The definition of "Unit" and the calculation method to be relied upon is set forth in Developer's prospectus and the method set forth in the Developer's prospectus may result in a square footage calculation less than the method used here. Dimensions and Unit configuration may change during construction. The furniture illustrated is not included with purchase; the floorplan layout is not a guaranty on your use of space but is one example of uses of space. Consult the Developer's prospectus to understand the calculation of the Unit square footage and dimensions and what is included with purchase. Prices are not based on the square footage no matter the method of calculation of Unit dimensions and all prices are subject to change at any time.

ORAL REPRESENTATIONS CANNOT BE RELIED UPON AS CORRECTLY STATING REPRESENTATIONS OF THE DEVELOPER. FOR CORRECT REPRESENTATIONS, MAKE REFERENCE TO THIS BROCHURE AND TO THE DOCUMENTS REQUIRED BY SECTION 718.503, FLORIDA STATUTES, TO BE FURNISHED BY A DEVELOPER TO A BUYER OR LESSEE. The St. Regis Residences, Miami are developed by 1809 Brickell Property Owner, LLC ("Developer"). The St. Regis Residences, Miami are not owned, developed, or sold by Marriott International, Inc. or its affiliates ("Marriott"). The Developer uses the St. Regis marks under a license from Marriott, which has not confirmed the accuracy of any of the statements or representations made about the project by Developer. Sketches, renderings, or photographs depicting a floor plan are proposed only and the Developer reserves the right to modify, revise, or withdraw any or all of the same in Developer's sole discretion without prior notice. Locations and layouts of windows, doors, closets, plumbing fixtures, and structural and architectural design elements may vary from concept to actual construction. All depictions of appliances, plumbing fixtures, counters, countertops, cabinets, soffits, floor coverings, and other matters of design and décor detail or floor plans are conceptual and such drawings shown should not be relied upon as representations, express or implied, of the final detail of The St. Regis Residences, Miami or any Unit. There is no guarantee that any proposed hotel brands will be involved as depicted or at all upon, or following, the completion of The St. Regis Residences, Miami. Consult the prospectus of the Developer to understand this offering, the amenities, the proposed budgets, terms, conditions, specifications, fees, Unit dimensions, site plans, and to learn what is included with purchase and by payment of regular assessments. All prices are subject to change at any time and without notice and do not include optional features, design packages, furniture packages, or premiums for upgrades to any Unit. © 1809 Brickell Property Owner, LLC 2023.





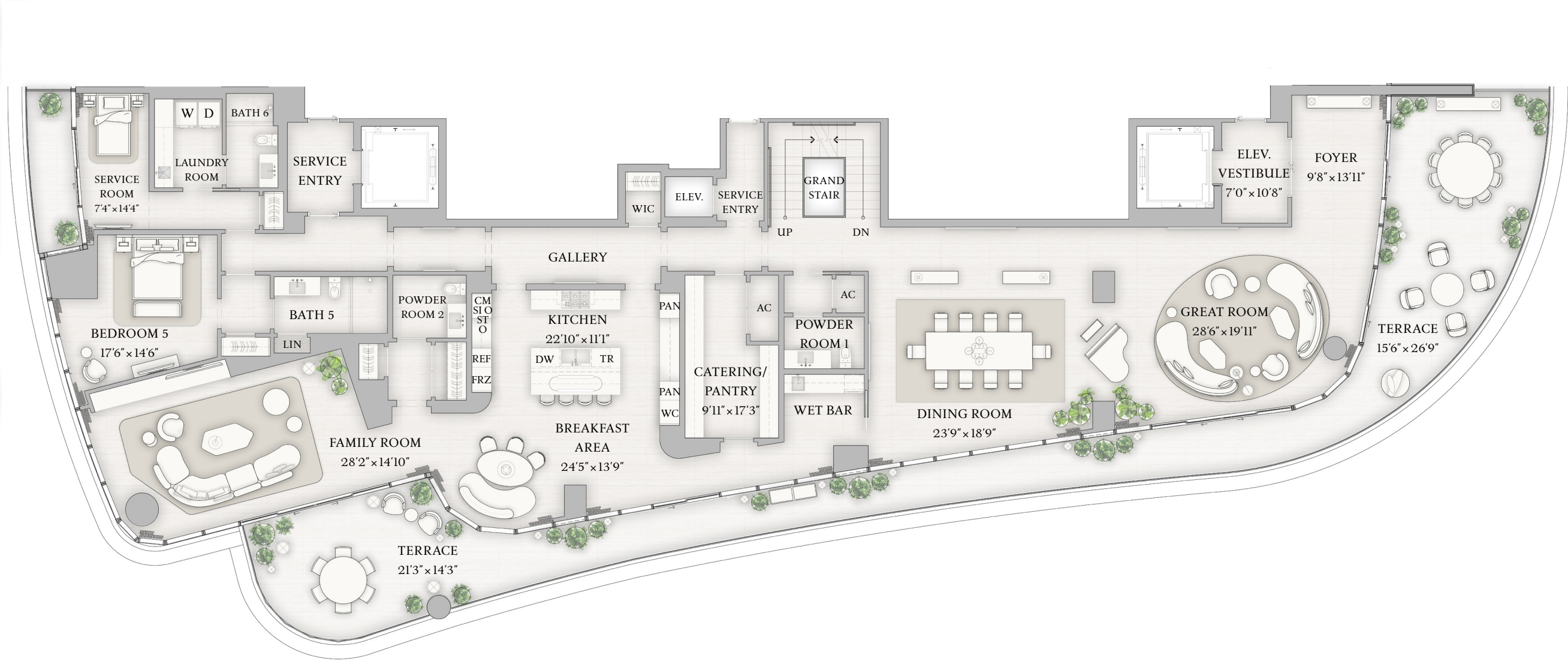


PENTHOUSE  
UPH B  
UPPER LEVEL

UPPER LEVEL INTERIOR  
4,744 SF | 441 SQM  
UPPER LEVEL EXTERIOR  
1,311 SF | 122 SQM

TOTAL INTERIOR  
9,968 SF | 927 SQM  
TOTAL EXTERIOR  
5,546 SF | 517 SQM

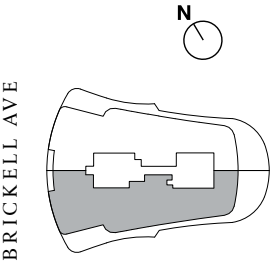
- 5 BEDROOMS
- 7 BATHROOMS
- 2 POWDER ROOMS
- PRIVATE ROOF DECK
- PRIVATE POOL & SPA
- SUMMER KITCHEN
- WINDOWED SERVICE SUITE
- INTERNAL ELEVATOR

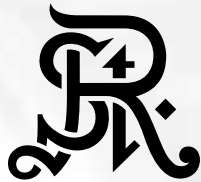


BISCAYNE BAY

The dimensions stated for this Unit floor plan are approximate because there are various recognized methods for calculating the square footage of a Unit. The square footage stated here is calculated from the exterior boundaries of the exterior walls to the centerline of interior demising walls without deductions for cutouts, curves, or architectural features. This method typically results in quoted dimensions greater than the dimensions that would be determined by using other accepted methods. The definition of "Unit" and the calculation method to be relied upon is set forth in Developer's prospectus and the method set forth in the Developer's prospectus may result in a square footage calculation less than the method used here. Dimensions and Unit configuration may change during construction. The furniture illustrated is not included with purchase; the floorplan layout is not a guaranty on your use of space but is one example of uses of space. Consult the Developer's prospectus to understand the calculation of the Unit square footage and dimensions and what is included with purchase. Prices are not based on the square footage no matter the method of calculation of Unit dimensions and all prices are subject to change at any time.

ORAL REPRESENTATIONS CANNOT BE RELIED UPON AS CORRECTLY STATING REPRESENTATIONS OF THE DEVELOPER. FOR CORRECT REPRESENTATIONS, MAKE REFERENCE TO THIS BROCHURE AND TO THE DOCUMENTS REQUIRED BY SECTION 718.503, FLORIDA STATUTES, TO BE FURNISHED BY A DEVELOPER TO A BUYER OR LESSEE. The St. Regis Residences, Miami are developed by 1809 Brickell Property Owner, LLC ("Developer"). The St. Regis Residences, Miami are not owned, developed, or sold by Marriott International, Inc. or its affiliates ("Marriott"). The Developer uses the St. Regis marks under a license from Marriott, which has not confirmed the accuracy of any of the statements or representations made about the project by Developer. Sketches, renderings, or photographs depicting a floor plan are proposed only and the Developer reserves the right to modify, revise, or withdraw any or all of the same in Developer's sole discretion without prior notice. Locations and layouts of windows, doors, closets, plumbing fixtures, and structural and architectural design elements may vary from concept to actual construction. All depictions of appliances, plumbing fixtures, counters, countertops, cabinets, soffits, floor coverings, and other matters of design and décor detail or floor plans are conceptual and such drawings shown should not be relied upon as representations, express or implied, of the final detail of The St. Regis Residences, Miami or any Unit. There is no guarantee that any proposed hotel brands will be involved as depicted or at all upon, or following, the completion of The St. Regis Residences, Miami. Consult the prospectus of the Developer to understand this offering, the amenities, the proposed budgets, terms, conditions, specifications, fees, Unit dimensions, site plans, and to learn what is included with purchase and by payment of regular assessments. All prices are subject to change at any time and without notice and do not include optional features, design packages, furniture packages, or premiums for upgrades to any Unit. © 1809 Brickell Property Owner, LLC 2023.





RESIDENCE

AB

FLOORS 21–30, 33–41

- 5 BEDROOMS
- 6 BATHROOMS
- 1 POWDER ROOM

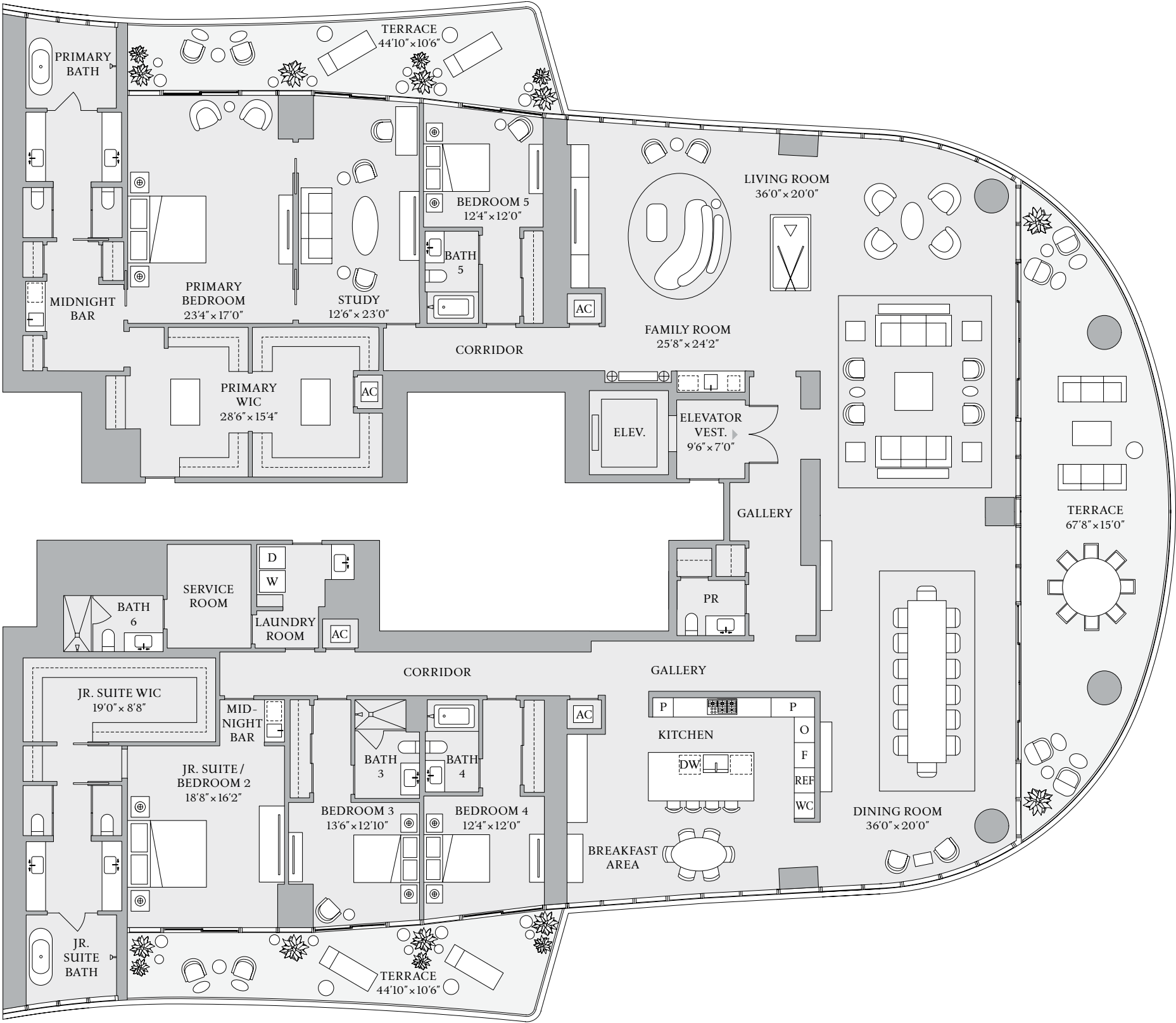
INTERIOR  
7,391 SF | 686.6 SQM  
EXTERIOR  
1,468 SF | 136.4 SQM

1809 Brickell Avenue, Miami, Florida 33129  
MiamiSRR.com 786 713 3556



The dimensions stated for this Unit floor plan are approximate because there are various recognized methods for calculating the square footage of a Unit. The square footage stated here is calculated from the exterior boundaries of the exterior walls to the centerline of interior demising walls without deductions for cutouts, curves, or architectural features. This method typically results in quoted dimensions greater than the dimensions that would be determined by using other accepted methods. The definition of “Unit” and the calculation method to be relied upon is set forth in Developer’s prospectus and the method set forth in the Developer’s prospectus may result in a square footage calculation less than the method used here. Dimensions and Unit configuration may change during construction. The furniture illustrated is not included with purchase; the floorplan layout is not a guaranty on your use of space but is one example of uses of space. Consult the Developer’s prospectus to understand the calculation of the Unit square footage and dimensions and what is included with purchase. Prices are not based on the square footage no matter the method of calculation of Unit dimensions and all prices are subject to change at any time.

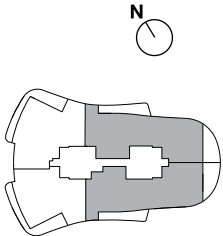
ORAL REPRESENTATIONS CANNOT BE RELIED UPON AS CORRECTLY STATING REPRESENTATIONS OF THE DEVELOPER. FOR CORRECT REPRESENTATIONS, MAKE REFERENCE TO THIS BROCHURE AND TO THE DOCUMENTS REQUIRED BY SECTION 718.503, FLORIDA STATUTES, TO BE FURNISHED BY A DEVELOPER TO A BUYER OR LESSEE. The St. Regis Residences, Miami are developed by 1809 Brickell Property Owner, LLC (“Developer”). The St. Regis Residences, Miami are not owned, developed, or sold by Marriott International, Inc. or its affiliates (“Marriott”). The Developer uses the St. Regis marks under a license from Marriott, which has not confirmed the accuracy of any of the statements or representations made about the project by Developer. Sketches, renderings, or photographs depicting a floor plan are proposed only and the Developer reserves the right to modify, revise, or withdraw any or all of the same in Developer’s sole discretion without prior notice. Locations and layouts of windows, doors, closets, plumbing fixtures, and structural and architectural design elements may vary from concept to actual construction. All depictions of appliances, plumbing fixtures, counters, countertops, cabinets, soffits, floor coverings, and other matters of design and décor detail or floor plans are conceptual and such drawings shown should not be relied upon as representations, express or implied, of the final detail of The St. Regis Residences, Miami or any Unit. There is no guarantee that any proposed hotel brands will be involved as depicted or at all upon, or following, the completion of The St. Regis Residences, Miami. Consult the prospectus of the Developer to understand this offering, the amenities, the proposed budgets, terms, conditions, specifications, fees, Unit dimensions, site plans, and to learn what is included with purchase and by payment of regular assessments. All prices are subject to change at any time and without notice and do not include optional features, design packages, furniture packages, or premiums for upgrades to any Unit. © 1809 Brickell Property Owner, LLC 2023.



ST REGIS  
MIAMI  
THE RESIDENCES

BISCAYNE BAY

BRICKELL AVE







ST REGIS  
MIAMI  
THE RESIDENCES

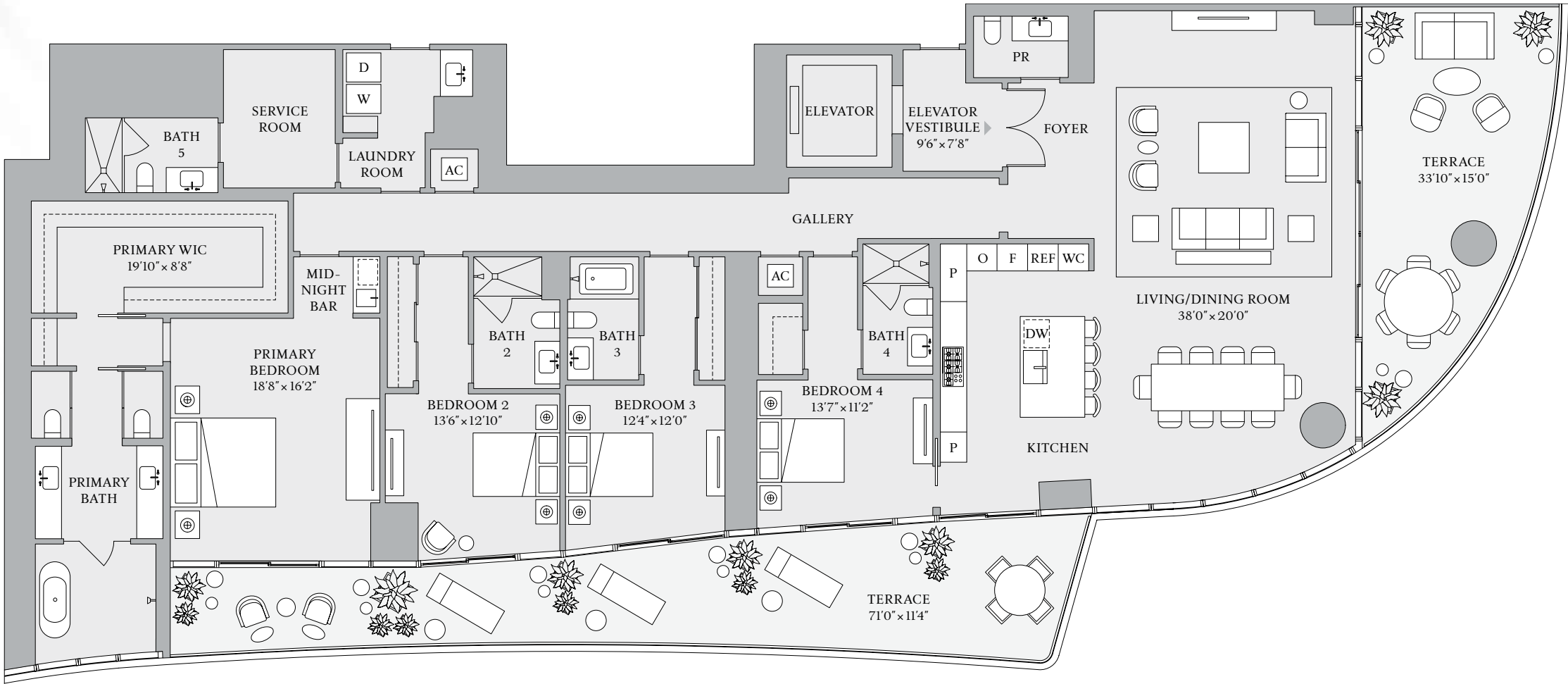
RESIDENCE

B

FLOORS 8–18

- 4 BEDROOMS
- 5 BATHROOMS
- 1 POWDER ROOM

INTERIOR  
3,679 SF | 341.8 SQM  
EXTERIOR  
941 SF | 87.4 SQM

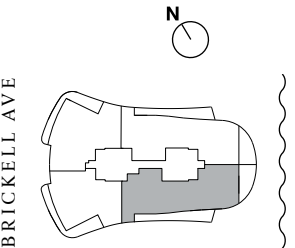


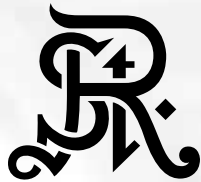
1809 Brickell Avenue, Miami, Florida 33129  
MiamiSRR.com 786 713 3556

RELATED INTEGRA

The dimensions stated for this Unit floor plan are approximate because there are various recognized methods for calculating the square footage of a Unit. The square footage stated here is calculated from the exterior boundaries of the exterior walls to the centerline of interior demising walls without deductions for cutouts, curves, or architectural features. This method typically results in quoted dimensions greater than the dimensions that would be determined by using other accepted methods. The definition of "Unit" and the calculation method to be relied upon is set forth in Developer's prospectus and the method set forth in the Developer's prospectus may result in a square footage calculation less than the method used here. Dimensions and Unit configuration may change during construction. The furniture illustrated is not included with purchase; the floorplan layout is not a guaranty on your use of space but is one example of uses of space. Consult the Developer's prospectus to understand the calculation of the Unit square footage and dimensions and what is included with purchase. Prices are not based on the square footage no matter the method of calculation of Unit dimensions and all prices are subject to change at any time.

ORAL REPRESENTATIONS CANNOT BE RELIED UPON AS CORRECTLY STATING REPRESENTATIONS OF THE DEVELOPER. FOR CORRECT REPRESENTATIONS, MAKE REFERENCE TO THIS BROCHURE AND TO THE DOCUMENTS REQUIRED BY SECTION 718.503, FLORIDA STATUTES, TO BE FURNISHED BY A DEVELOPER TO A BUYER OR LESSEE. The St. Regis Residences, Miami are developed by 1809 Brickell Property Owner, LLC ("Developer"). The St. Regis Residences, Miami are not owned, developed, or sold by Marriott International, Inc. or its affiliates ("Marriott"). The Developer uses the St. Regis marks under a license from Marriott, which has not confirmed the accuracy of any of the statements or representations made about the project by Developer. Sketches, renderings, or photographs depicting a floor plan are proposed only and the Developer reserves the right to modify, revise, or withdraw any or all of the same in Developer's sole discretion without prior notice. Locations and layouts of windows, doors, closets, plumbing fixtures, and structural and architectural design elements may vary from concept to actual construction. All depictions of appliances, plumbing fixtures, counters, countertops, cabinets, soffits, floor coverings, and other matters of design and décor detail or floor plans are conceptual and such drawings shown should not be relied upon as representations, express or implied, of the final detail of The St. Regis Residences, Miami or any Unit. There is no guarantee that any proposed hotel brands will be involved as depicted or at all upon, or following, the completion of The St. Regis Residences, Miami. Consult the prospectus of the Developer to understand this offering, the amenities, the proposed budgets, terms, conditions, specifications, fees, Unit dimensions, site plans, and to learn what is included with purchase and by payment of regular assessments. All prices are subject to change at any time and without notice and do not include optional features, design packages, furniture packages, or premiums for upgrades to any Unit. © 1809 Brickell Property Owner, LLC 2023.





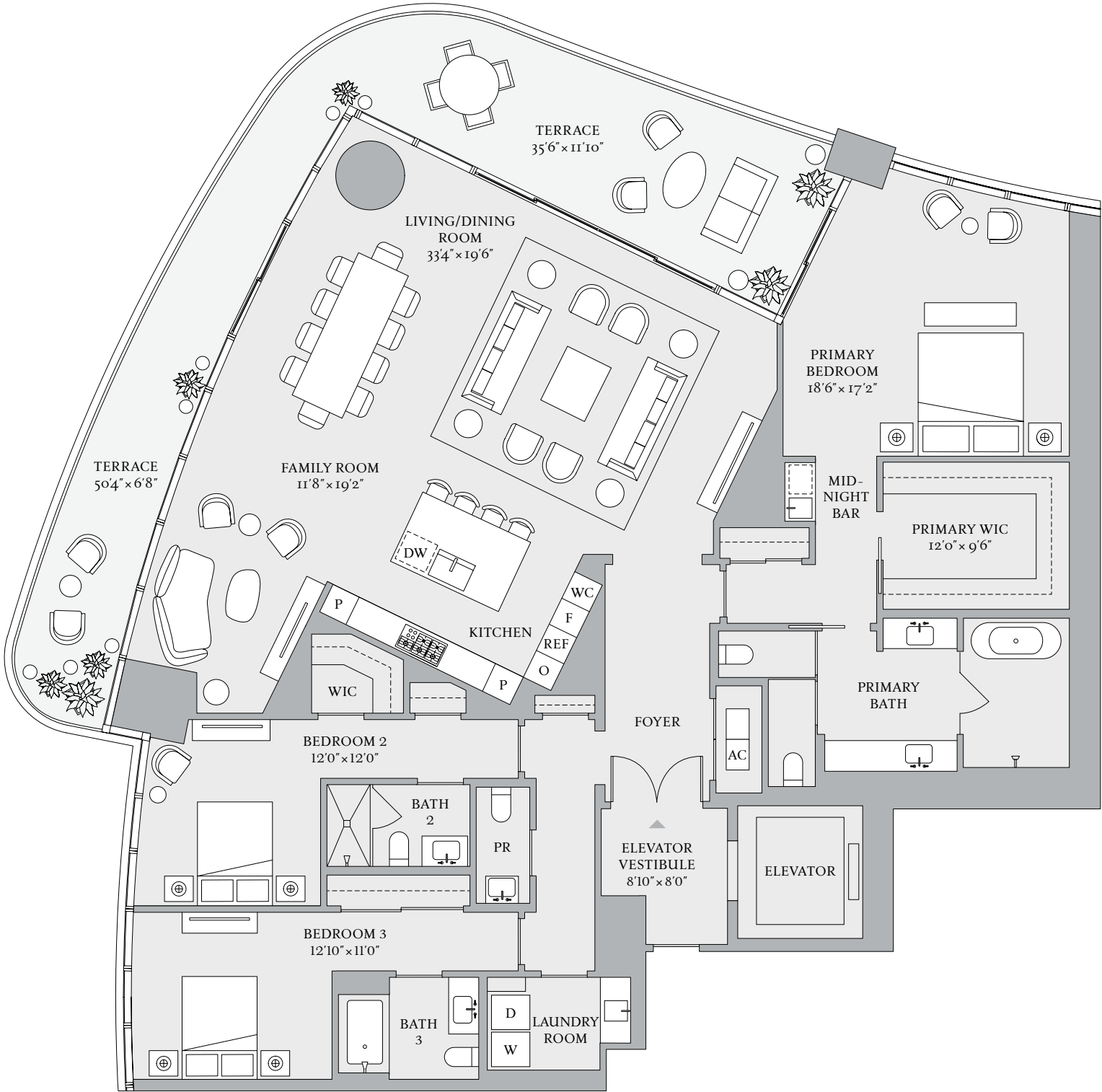
RESIDENCE

C

FLOORS 8–18, 21–30, 33–41

- 3 BEDROOMS
- 3 BATHROOMS
- 1 POWDER ROOM

INTERIOR  
2,987 SF | 277.5 SQM  
EXTERIOR  
590 SF | 54.8 SQM



1809 Brickell Avenue, Miami, Florida 33129  
MiamiSRR.com 786 713 3556

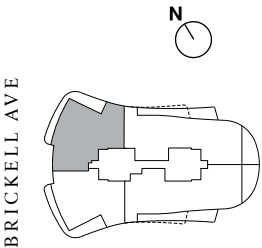
RELATED INTEGRA

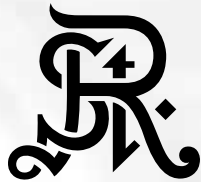
The dimensions stated for this Unit floor plan are approximate because there are various recognized methods for calculating the square footage of a Unit. The square footage stated here is calculated from the exterior boundaries of the exterior walls to the centerline of interior demising walls without deductions for cutouts, curves, or architectural features. This method typically results in quoted dimensions greater than the dimensions that would be determined by using other accepted methods. The definition of "Unit" and the calculation method to be relied upon is set forth in Developer's prospectus and the method set forth in the Developer's prospectus may result in a square footage calculation less than the method used here. Dimensions and Unit configuration may change during construction. The furniture illustrated is not included with purchase; the floorplan layout is not a guaranty on your use of space but is one example of uses of space. Consult the Developer's prospectus to understand the calculation of the Unit square footage and dimensions and what is included with purchase. Prices are not based on the square footage no matter the method of calculation of Unit dimensions and all prices are subject to change at any time.

ORAL REPRESENTATIONS CANNOT BE RELIED UPON AS CORRECTLY STATING REPRESENTATIONS OF THE DEVELOPER. FOR CORRECT REPRESENTATIONS, MAKE REFERENCE TO THIS BROCHURE AND TO THE DOCUMENTS REQUIRED BY SECTION 718.503, FLORIDA STATUTES, TO BE FURNISHED BY A DEVELOPER TO A BUYER OR LESSEE. The St. Regis Residences, Miami are developed by 1809 Brickell Property Owner, LLC ("Developer"). The St. Regis Residences, Miami are not owned, developed, or sold by Marriott International, Inc. or its affiliates ("Marriott"). The Developer uses the St. Regis marks under a license from Marriott, which has not confirmed the accuracy of any of the statements or representations made about the project by Developer. Sketches, renderings, or photographs depicting a floor plan are proposed only and the Developer reserves the right to modify, revise, or withdraw any or all of the same in Developer's sole discretion without prior notice. Locations and layouts of windows, doors, closets, plumbing fixtures, and structural and architectural design elements may vary from concept to actual construction. All depictions of appliances, plumbing fixtures, counters, countertops, cabinets, soffits, floor coverings, and other matters of design and décor detail or floor plans are conceptual and such drawings shown should not be relied upon as representations, express or implied, of the final detail of The St. Regis Residences, Miami or any Unit. There is no guarantee that any proposed hotel brands will be involved as depicted or at all upon, or following, the completion of The St. Regis Residences, Miami. Consult the prospectus of the Developer to understand this offering, the amenities, the proposed budgets, terms, conditions, specifications, fees, Unit dimensions, site plans, and to learn what is included with purchase and by payment of regular assessments. All prices are subject to change at any time and without notice and do not include optional features, design packages, furniture packages, or premiums for upgrades to any Unit. © 1809 Brickell Property Owner, LLC 2023.

ST REGIS  
MIAMI  
THE RESIDENCES

BISCAYNE BAY





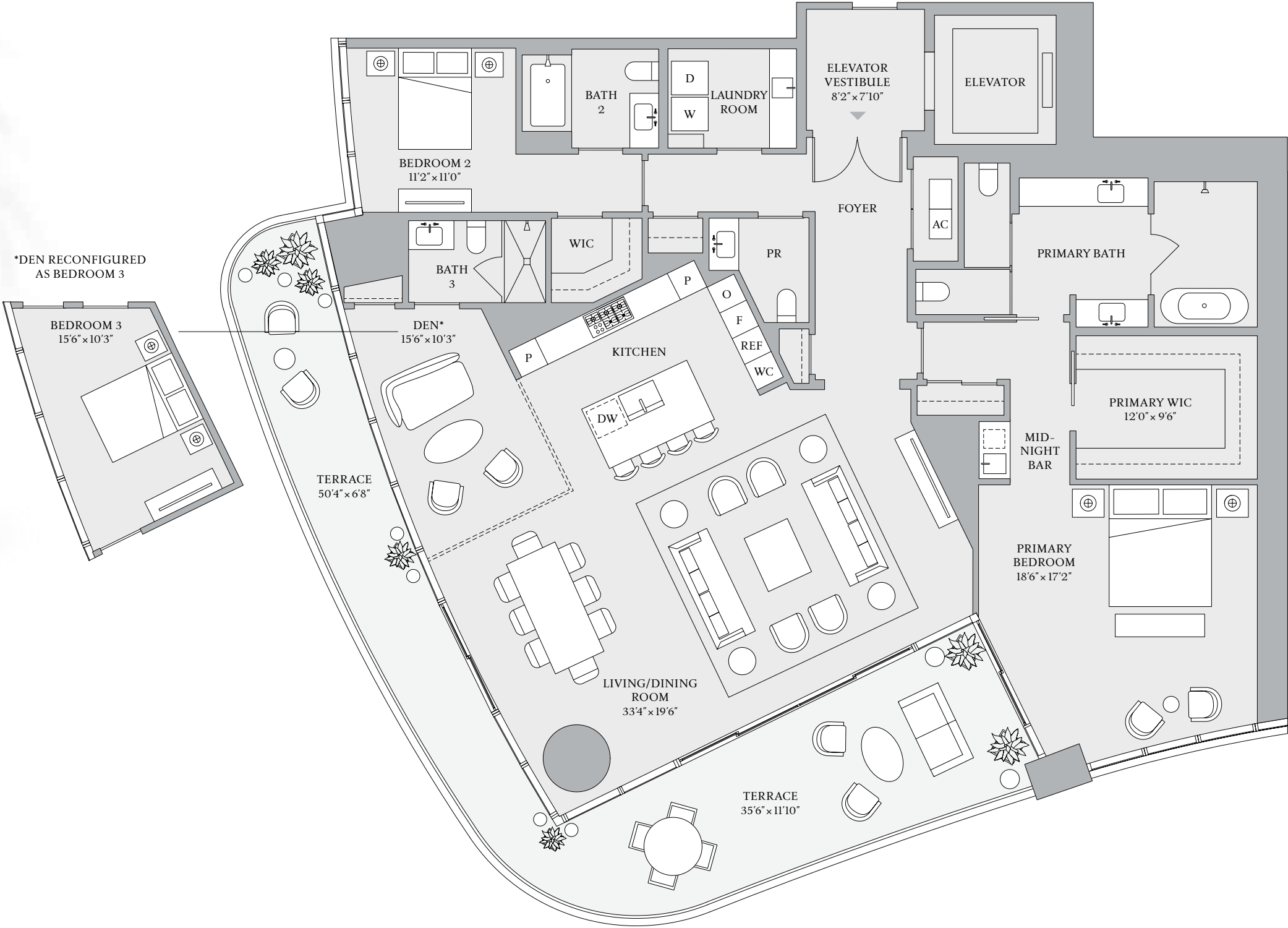
RESIDENCE

D

FLOORS 8–18, 21–30, 33–41

- 2 BEDROOMS
- 3 BATHROOMS
- 1 POWDER ROOM

INTERIOR  
2,616 SF | 243 SQM  
EXTERIOR  
590 SF | 54.8 SQM



1809 Brickell Avenue, Miami, Florida 33129  
MiamiSRR.com 786 713 3556

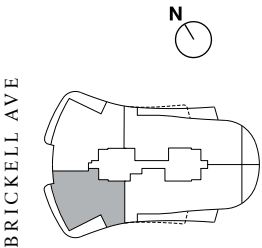
RELATED INTEGRA

The dimensions stated for this Unit floor plan are approximate because there are various recognized methods for calculating the square footage of a Unit. The square footage stated here is calculated from the exterior boundaries of the exterior walls to the centerline of interior demising walls without deductions for cutouts, curves, or architectural features. This method typically results in quoted dimensions greater than the dimensions that would be determined by using other accepted methods. The definition of "Unit" and the calculation method to be relied upon is set forth in Developer's prospectus and the method set forth in the Developer's prospectus may result in a square footage calculation less than the method used here. Dimensions and Unit configuration may change during construction. The furniture illustrated is not included with purchase; the floorplan layout is not a guaranty on your use of space but is one example of uses of space. Consult the Developer's prospectus to understand the calculation of the Unit square footage and dimensions and what is included with purchase. Prices are not based on the square footage no matter the method of calculation of Unit dimensions and all prices are subject to change at any time.

ORAL REPRESENTATIONS CANNOT BE RELIED UPON AS CORRECTLY STATING REPRESENTATIONS OF THE DEVELOPER. FOR CORRECT REPRESENTATIONS, MAKE REFERENCE TO THIS BROCHURE AND TO THE DOCUMENTS REQUIRED BY SECTION 718.503, FLORIDA STATUTES, TO BE FURNISHED BY A DEVELOPER TO A BUYER OR LESSEE. The St. Regis Residences, Miami are developed by 1809 Brickell Property Owner, LLC ("Developer"). The St. Regis Residences, Miami are not owned, developed, or sold by Marriott International, Inc. or its affiliates ("Marriott"). The Developer uses the St. Regis marks under a license from Marriott, which has not confirmed the accuracy of any of the statements or representations made about the project by Developer. Sketches, renderings, or photographs depicting a floor plan are proposed only and the Developer reserves the right to modify, revise, or withdraw any or all of the same in Developer's sole discretion without prior notice. Locations and layouts of windows, doors, closets, plumbing fixtures, and structural and architectural design elements may vary from concept to actual construction. All depictions of appliances, plumbing fixtures, counters, countertops, cabinets, soffits, floor coverings, and other matters of design and décor detail or floor plans are conceptual and such drawings shown should not be relied upon as representations, express or implied, of the final detail of The St. Regis Residences, Miami or any Unit. There is no guarantee that any proposed hotel brands will be involved as depicted or at all upon, or following, the completion of The St. Regis Residences, Miami. Consult the prospectus of the Developer to understand this offering, the amenities, the proposed budgets, terms, conditions, specifications, fees, Unit dimensions, site plans, and to learn what is included with purchase and by payment of regular assessments. All prices are subject to change at any time and without notice and do not include optional features, design packages, furniture packages, or premiums for upgrades to any Unit. © 1809 Brickell Property Owner, LLC 2023.

ST REGIS  
MIAMI  
THE RESIDENCES

BISCAYNE BAY







PENTHOUSE  
UPH A  
UPPER LEVEL

UPPER LEVEL INTERIOR

4,735 SF | 440 SQM

UPPER LEVEL EXTERIOR

1,311 SF | 122 SQM

TOTAL INTERIOR

10,003 SF | 930 SQM

TOTAL EXTERIOR

5,465 SF | 509 SQM

5 BEDROOMS

7 BATHROOMS

2 POWDER ROOMS

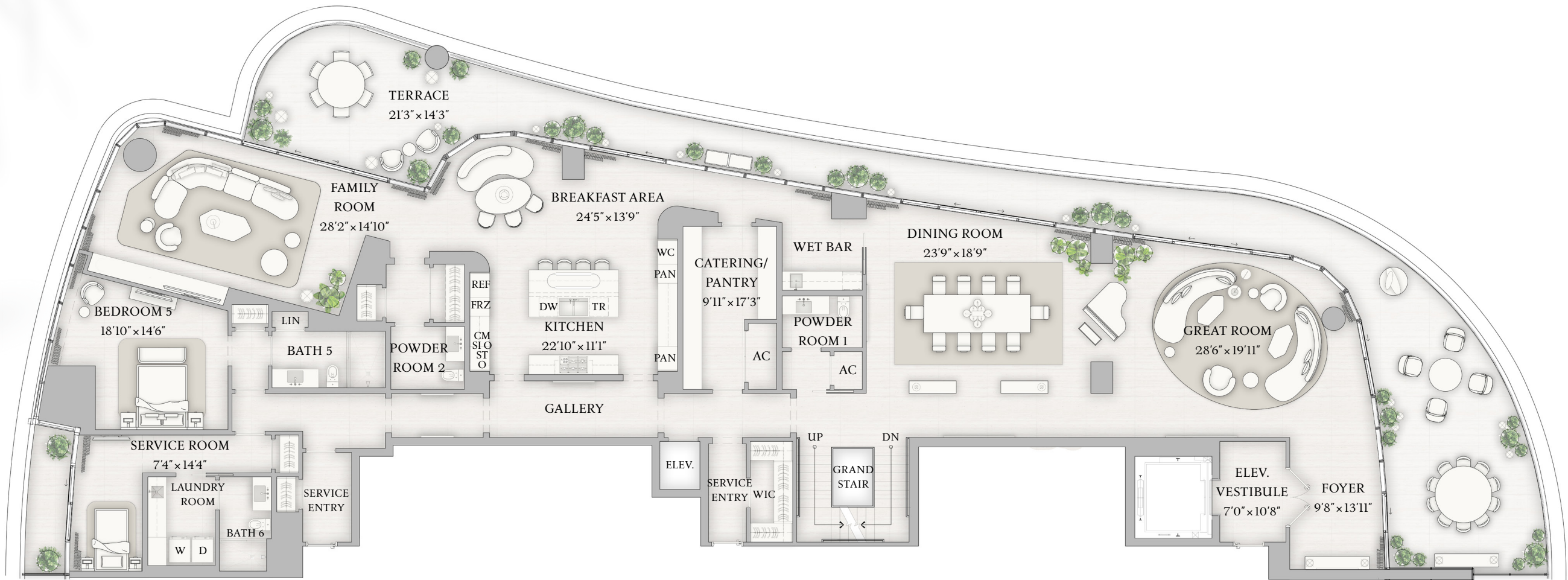
PRIVATE ROOF DECK

PRIVATE POOL & SPA

SUMMER KITCHEN

WINDOWED SERVICE SUITE

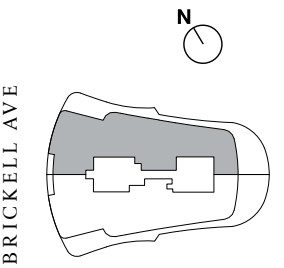
INTERNAL ELEVATOR



BISCAYNE BAY

The dimensions stated for this Unit floor plan are approximate because there are various recognized methods for calculating the square footage of a Unit. The square footage stated here is calculated from the exterior boundaries of the exterior walls to the centerline of interior demising walls without deductions for cutouts, curves, or architectural features. This method typically results in quoted dimensions greater than the dimensions that would be determined by using other accepted methods. The definition of "Unit" and the calculation method to be relied upon is set forth in Developer's prospectus and the method set forth in the Developer's prospectus may result in a square footage calculation less than the method used here. Dimensions and Unit configuration may change during construction. The furniture illustrated is not included with purchase; the floorplan layout is not a guaranty on your use of space but is one example of uses of space. Consult the Developer's prospectus to understand the calculation of the Unit square footage and dimensions and what is included with purchase. Prices are not based on the square footage no matter the method of calculation of Unit dimensions and all prices are subject to change at any time.

ORAL REPRESENTATIONS CANNOT BE RELIED UPON AS CORRECTLY STATING REPRESENTATIONS OF THE DEVELOPER. FOR CORRECT REPRESENTATIONS, MAKE REFERENCE TO THIS BROCHURE AND TO THE DOCUMENTS REQUIRED BY SECTION 718.503, FLORIDA STATUTES, TO BE FURNISHED BY A DEVELOPER TO A BUYER OR LESSEE. The St. Regis Residences, Miami are developed by 1809 Brickell Property Owner, LLC ("Developer"). The St. Regis Residences, Miami are not owned, developed, or sold by Marriott International, Inc. or its affiliates ("Marriott"). The Developer uses the St. Regis marks under a license from Marriott, which has not confirmed the accuracy of any of the statements or representations made about the project by Developer. Sketches, renderings, or photographs depicting a floor plan are proposed only and the Developer reserves the right to modify, revise, or withdraw any or all of the same in Developer's sole discretion without prior notice. Locations and layouts of windows, doors, closets, plumbing fixtures, and structural and architectural design elements may vary from concept to actual construction. All depictions of appliances, plumbing fixtures, counters, countertops, cabinets, soffits, floor coverings, and other matters of design and décor detail or floor plans are conceptual and such drawings shown should not be relied upon as representations, express or implied, of the final detail of The St. Regis Residences, Miami or any Unit. There is no guarantee that any proposed hotel brands will be involved as depicted or at all upon, or following, the completion of The St. Regis Residences, Miami. Consult the prospectus of the Developer to understand this offering, the amenities, the proposed budgets, terms, conditions, specifications, fees, Unit dimensions, site plans, and to learn what is included with purchase and by payment of regular assessments. All prices are subject to change at any time and without notice and do not include optional features, design packages, furniture packages, or premiums for upgrades to any Unit. © 1809 Brickell Property Owner, LLC 2023.





ST REGIS  
MIAMI  
THE RESIDENCES

PENTHOUSE


# LPH A

FLOORS 46 – 47, LOWER LEVEL

Future residences located at:  
1809 Brickell Avenue  
Miami, Florida 33129  
MiamiSRR.com  
786 713 3556



ORAL REPRESENTATIONS CANNOT BE RELIED UPON AS CORRECTLY STATING REPRESENTATIONS OF THE DEVELOPER. FOR CORRECT REPRESENTATIONS, MAKE REFERENCE TO THIS BROCHURE AND TO THE DOCUMENTS REQUIRED BY SECTION 718.503, FLORIDA STATUTES, TO BE FURNISHED BY A DEVELOPER TO A BUYER OR LESSEE.

The St. Regis Residences, Miami are developed by 1809 Brickell Property Owner, LLC (“Developer”). The St. Regis Residences, Miami are not owned, developed, or sold by Marriott International, Inc. or its affiliates (“Marriott”). The Developer uses the St. Regis marks under a license from Marriott, which has not confirmed the accuracy of any of the statements or representations made about the project by Developer. Sketches, renderings, or photographs depicting a floor plan are proposed only and the Developer reserves the right to modify, revise, or withdraw any or all of the same in Developer’s sole discretion without prior notice. Locations and layouts of windows, doors, closets, plumbing fixtures, and structural and architectural design elements may vary from concept to actual construction. All depictions of appliances, plumbing fixtures, counters, countertops, cabinets, soffits, floor coverings, and other matters of design and décor detail or floor plans are conceptual and such drawings shown should not be relied upon as representations, express or implied, of the final detail of The St. Regis Residences, Miami or any Unit. There is no guarantee that any proposed hotel brands will be involved as depicted or at all upon, or following, the completion of The St. Regis Residences, Miami. Consult the prospectus of the Developer to understand this offering, the amenities, the proposed budgets, terms, conditions, specifications, fees, Unit dimensions, site plans, and to learn what is included with purchase and by payment of regular assessments. All prices are subject to change at any time and without notice and do not include optional features, design packages, furniture packages, or premiums for upgrades to any Unit. © 1809 Brickell Property Owner, LLC 2024. 

6 BEDROOMS | 7 BATHROOMS | 2 POWDER ROOMS  
INTERIOR: 4,772 SF | 443 SQM   EXTERIOR: 1,529 SF | 142 SQM  
TOTAL INTERIOR: 8,687 SF | 807 SQM   TOTAL EXTERIOR: 1,651 SF | 153 SQM



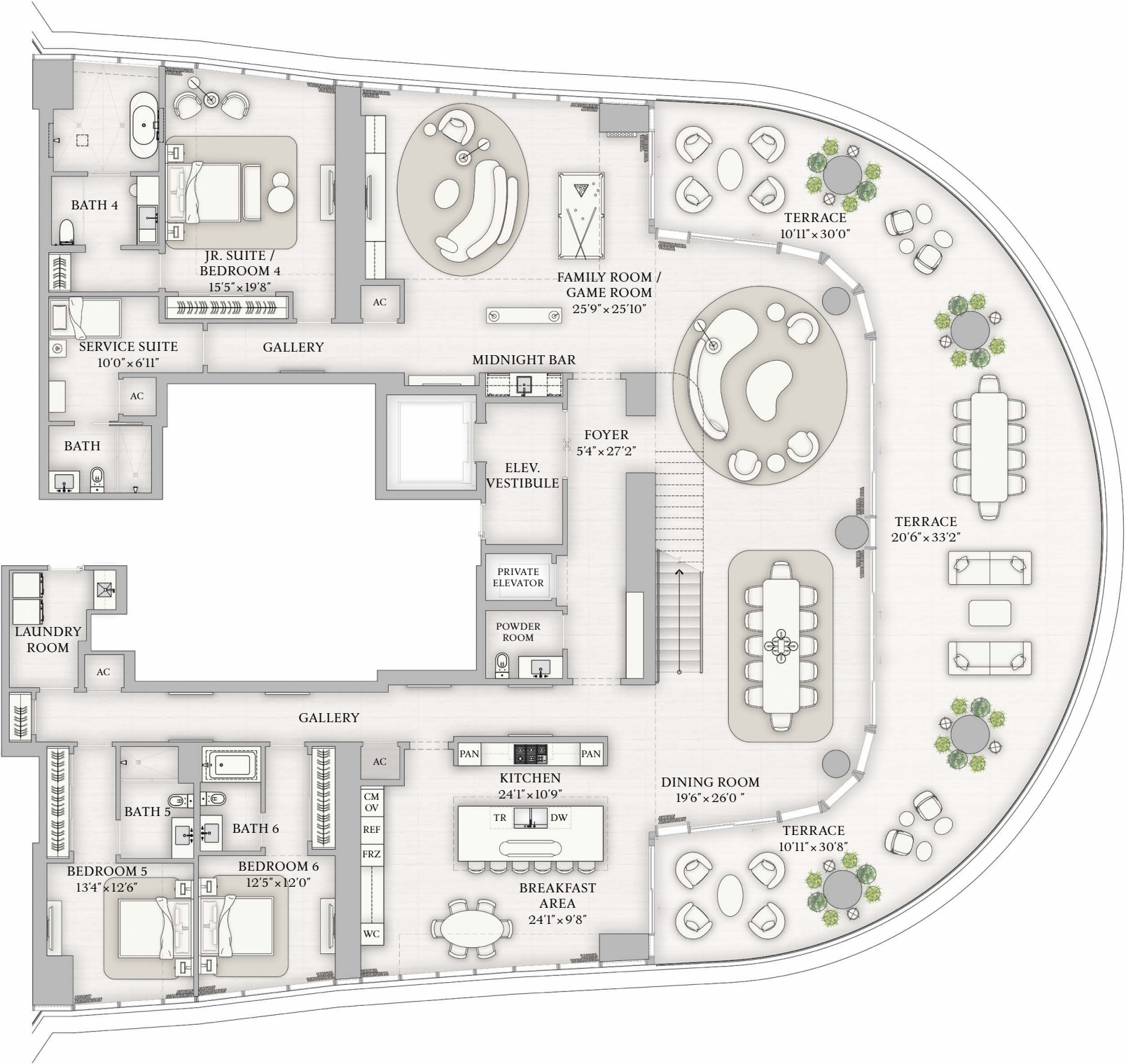


PENTHOUSE  
LPH A  
FLOORS 46–47, LOWER LEVEL

LOWER LEVEL INTERIOR  
4,772 SF | 443 SQM  
LOWER LEVEL EXTERIOR  
1,529 SF | 142 SQM

TOTAL INTERIOR  
8,687 SF | 807 SQM  
TOTAL EXTERIOR  
1,651 SF | 153 SQM

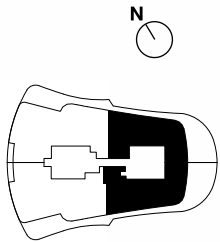
- 6 BEDROOMS
- 7 BATHROOMS
- 2 POWDER ROOMS
- DOUBLE HEIGHT GREAT ROOM
- EXPANSIVE DOUBLE HEIGHT TERRACE
- PRIMARY SUITE WITH OFFICE
- GAME ROOM
- FAMILY ROOM
- INTERNAL ELEVATOR
- SERVICE SUITE



BISCAYNE BAY

The dimensions stated for this Unit floor plan are approximate because there are various recognized methods for calculating the square footage of a Unit. The square footage stated here is calculated from the exterior boundaries of the exterior walls to the centerline of interior demising walls without deductions for cutouts, curves, or architectural features. This method typically results in quoted dimensions greater than the dimensions that would be determined by using other accepted methods. The definition of "Unit" and the calculation method to be relied upon is set forth in Developer's prospectus and the method set forth in the Developer's prospectus may result in a square footage calculation less than the method used here. Dimensions and Unit configuration may change during construction. The furniture illustrated is not included with purchase; the floorplan layout is not a guarantee on your use of space but is one example of uses of space. Consult the Developer's prospectus to understand the calculation of the Unit square footage and dimensions and what is included with purchase. Prices are not based on the square footage no matter the method of calculation of Unit dimensions and all prices are subject to change at any time.

BRICKELL AVE







ST REGIS  
MIAMI  
THE RESIDENCES

PENTHOUSE


# LPH A

FLOORS 46 – 47, UPPER LEVEL

Future residences located at:  
1809 Brickell Avenue  
Miami, Florida 33129  
MiamiSRR.com  
786 713 3556



ORAL REPRESENTATIONS CANNOT BE RELIED UPON AS CORRECTLY STATING REPRESENTATIONS OF THE DEVELOPER. FOR CORRECT REPRESENTATIONS, MAKE REFERENCE TO THIS BROCHURE AND TO THE DOCUMENTS REQUIRED BY SECTION 718.503, FLORIDA STATUTES, TO BE FURNISHED BY A DEVELOPER TO A BUYER OR LESSEE.

The St. Regis Residences, Miami are developed by 1809 Brickell Property Owner, LLC (“Developer”). The St. Regis Residences, Miami are not owned, developed, or sold by Marriott International, Inc. or its affiliates (“Marriott”). The Developer uses the St. Regis marks under a license from Marriott, which has not confirmed the accuracy of any of the statements or representations made about the project by Developer. Sketches, renderings, or photographs depicting a floor plan are proposed only and the Developer reserves the right to modify, revise, or withdraw any or all of the same in Developer’s sole discretion without prior notice. Locations and layouts of windows, doors, closets, plumbing fixtures, and structural and architectural design elements may vary from concept to actual construction. All depictions of appliances, plumbing fixtures, counters, countertops, cabinets, soffits, floor coverings, and other matters of design and décor detail or floor plans are conceptual and such drawings shown should not be relied upon as representations, express or implied, of the final detail of The St. Regis Residences, Miami or any Unit. There is no guarantee that any proposed hotel brands will be involved as depicted or at all upon, or following, the completion of The St. Regis Residences, Miami. Consult the prospectus of the Developer to understand this offering, the amenities, the proposed budgets, terms, conditions, specifications, fees, Unit dimensions, site plans, and to learn what is included with purchase and by payment of regular assessments. All prices are subject to change at any time and without notice and do not include optional features, design packages, furniture packages, or premiums for upgrades to any Unit. © 1809 Brickell Property Owner, LLC 2024. 

6 BEDROOMS | 7 BATHROOMS | 2 POWDER ROOMS  
INTERIOR: 3,915 SF | 364 SQM   EXTERIOR: 122 SF | 11 SQM  
TOTAL INTERIOR: 8,687 SF | 807 SQM   TOTAL EXTERIOR: 1,651 SF | 153 SQM

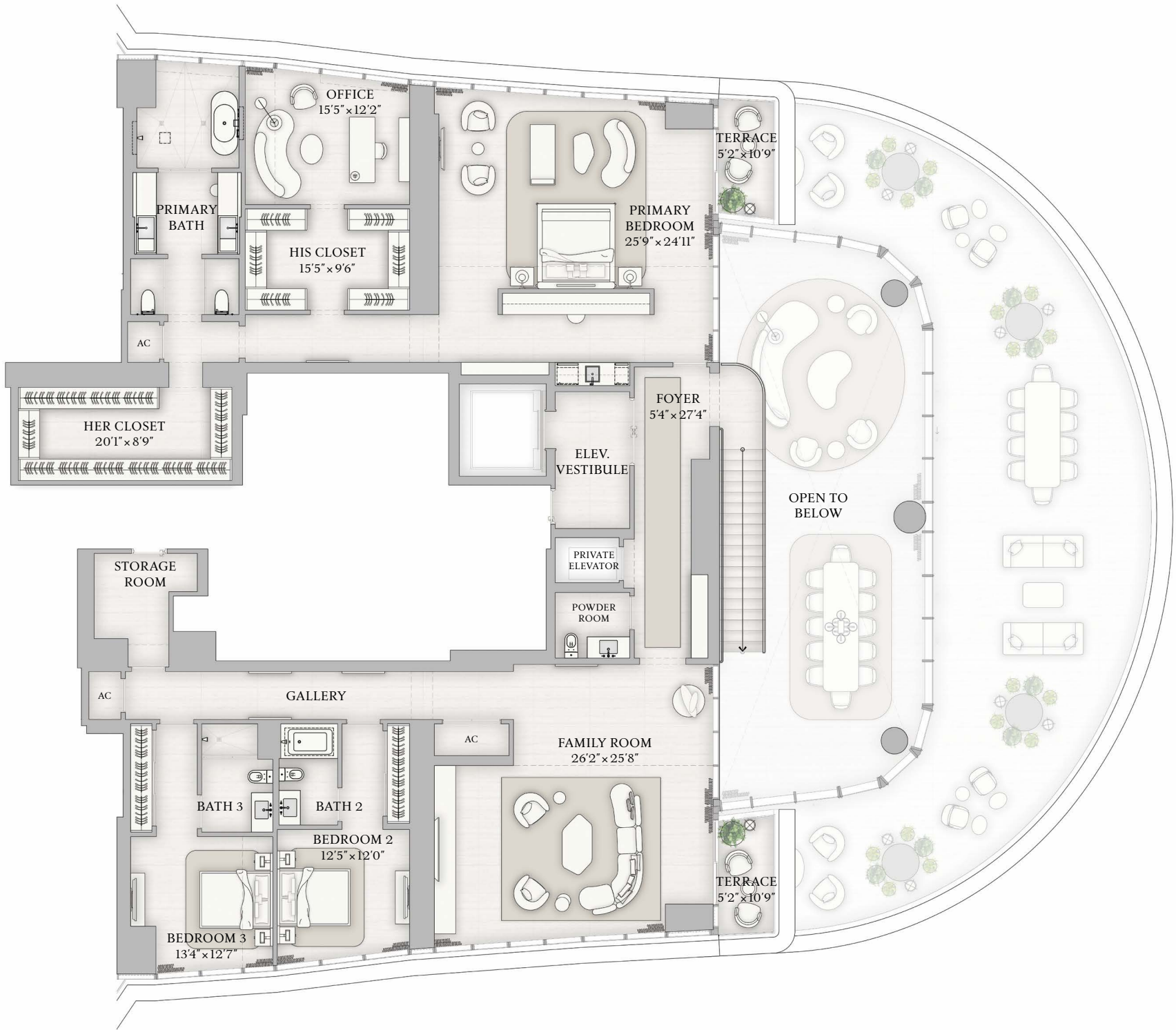


PENTHOUSE  
LPH A  
FLOORS 46–47, UPPER LEVEL

UPPER LEVEL INTERIOR  
3,915 SF | 364 SQM  
UPPER LEVEL EXTERIOR  
122 SF | 11 SQM

TOTAL INTERIOR  
8,687 SF | 807 SQM  
TOTAL EXTERIOR  
1,651 SF | 153 SQM

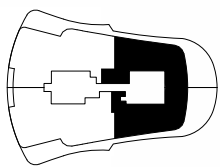
- 6 BEDROOMS
- 7 BATHROOMS
- 2 POWDER ROOMS
- DOUBLE HEIGHT GREAT ROOM
- EXPANSIVE DOUBLE HEIGHT TERRACE
- PRIMARY SUITE WITH OFFICE
- GAME ROOM
- FAMILY ROOM
- INTERNAL ELEVATOR
- SERVICE SUITE



BISCAYNE BAY

The dimensions stated for this Unit floor plan are approximate because there are various recognized methods for calculating the square footage of a Unit. The square footage stated here is calculated from the exterior boundaries of the exterior walls to the centerline of interior demising walls without deductions for cutouts, curves, or architectural features. This method typically results in quoted dimensions greater than the dimensions that would be determined by using other accepted methods. The definition of "Unit" and the calculation method to be relied upon is set forth in Developer's prospectus and the method set forth in the Developer's prospectus may result in a square footage calculation less than the method used here. Dimensions and Unit configuration may change during construction. The furniture illustrated is not included with purchase; the floorplan layout is not a guarantee on your use of space but is one example of uses of space. Consult the Developer's prospectus to understand the calculation of the Unit square footage and dimensions and what is included with purchase. Prices are not based on the square footage no matter the method of calculation of Unit dimensions and all prices are subject to change at any time.

BRICKELL AVE





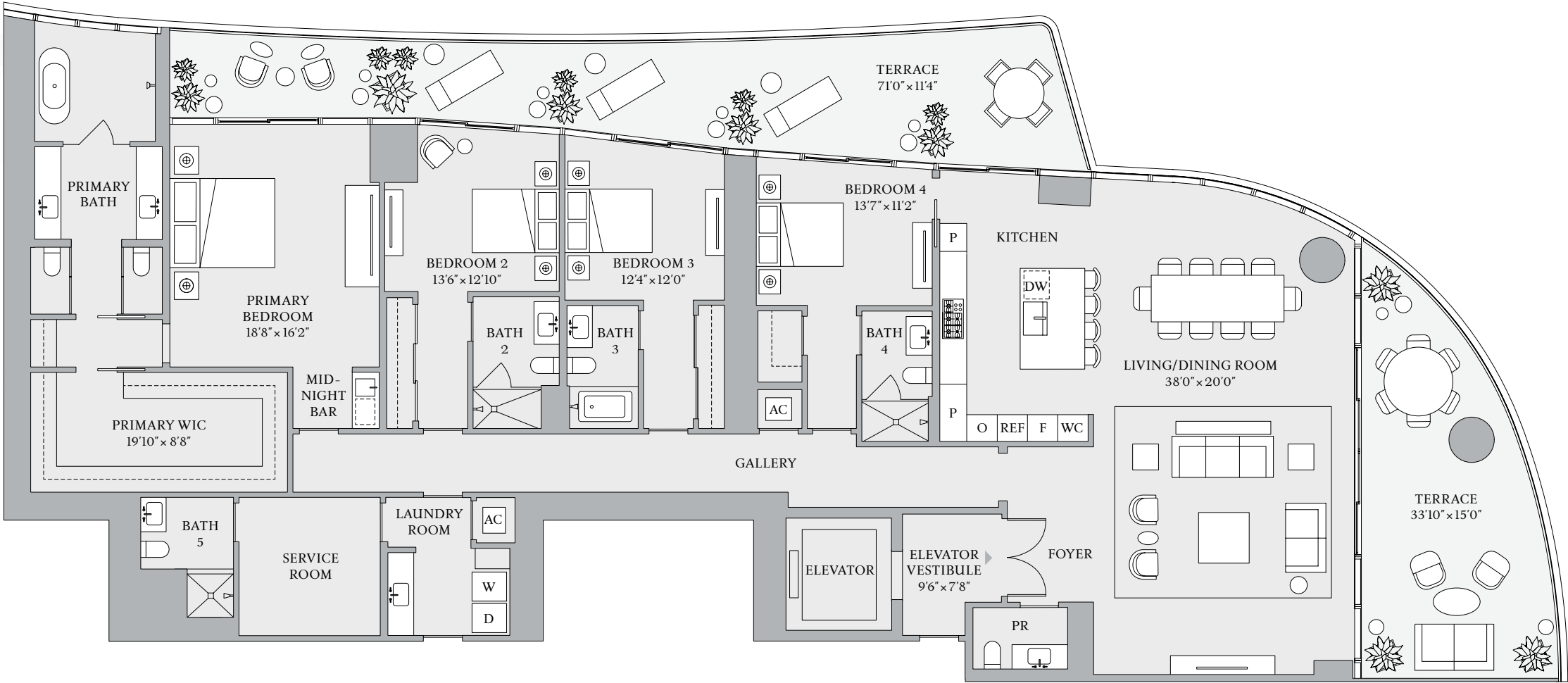
ST REGIS  
MIAMI  
THE RESIDENCES

RESIDENCE

A  
FLOORS 8–18

4 BEDROOMS  
5 BATHROOMS  
1 POWDER ROOM

INTERIOR  
3,712 SF | 344.9 SQM  
EXTERIOR  
941 SF | 87.4 SQM

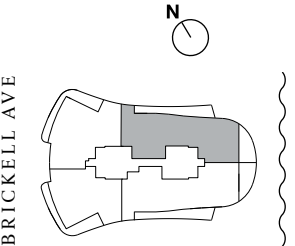


1809 Brickell Avenue, Miami, Florida 33129  
MiamiSRR.com 786 713 3556

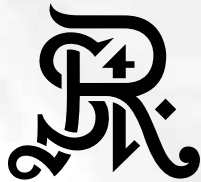
RELATED INTEGRA

The dimensions stated for this Unit floor plan are approximate because there are various recognized methods for calculating the square footage of a Unit. The square footage stated here is calculated from the exterior boundaries of the exterior walls to the centerline of interior demising walls without deductions for cutouts, curves, or architectural features. This method typically results in quoted dimensions greater than the dimensions that would be determined by using other accepted methods. The definition of "Unit" and the calculation method to be relied upon is set forth in Developer's prospectus and the method set forth in the Developer's prospectus may result in a square footage calculation less than the method used here. Dimensions and Unit configuration may change during construction. The furniture illustrated is not included with purchase; the floorplan layout is not a guaranty on your use of space but is one example of uses of space. Consult the Developer's prospectus to understand the calculation of the Unit square footage and dimensions and what is included with purchase. Prices are not based on the square footage no matter the method of calculation of Unit dimensions and all prices are subject to change at any time.

ORAL REPRESENTATIONS CANNOT BE RELIED UPON AS CORRECTLY STATING REPRESENTATIONS OF THE DEVELOPER. FOR CORRECT REPRESENTATIONS, MAKE REFERENCE TO THIS BROCHURE AND TO THE DOCUMENTS REQUIRED BY SECTION 718.503, FLORIDA STATUTES, TO BE FURNISHED BY A DEVELOPER TO A BUYER OR LESSEE. The St. Regis Residences, Miami are developed by 1809 Brickell Property Owner, LLC ("Developer"). The St. Regis Residences, Miami are not owned, developed, or sold by Marriott International, Inc. or its affiliates ("Marriott"). The Developer uses the St. Regis marks under a license from Marriott, which has not confirmed the accuracy of any of the statements or representations made about the project by Developer. Sketches, renderings, or photographs depicting a floor plan are proposed only and the Developer reserves the right to modify, revise, or withdraw any or all of the same in Developer's sole discretion without prior notice. Locations and layouts of windows, doors, closets, plumbing fixtures, and structural and architectural design elements may vary from concept to actual construction. All depictions of appliances, plumbing fixtures, counters, countertops, cabinets, soffits, floor coverings, and other matters of design and décor detail or floor plans are conceptual and such drawings shown should not be relied upon as representations, express or implied, of the final detail of The St. Regis Residences, Miami or any Unit. There is no guarantee that any proposed hotel brands will be involved as depicted or at all upon, or following, the completion of The St. Regis Residences, Miami. Consult the prospectus of the Developer to understand this offering, the amenities, the proposed budgets, terms, conditions, specifications, fees, Unit dimensions, site plans, and to learn what is included with purchase and by payment of regular assessments. All prices are subject to change at any time and without notice and do not include optional features, design packages, furniture packages, or premiums for upgrades to any Unit. © 1809 Brickell Property Owner, LLC 2023.







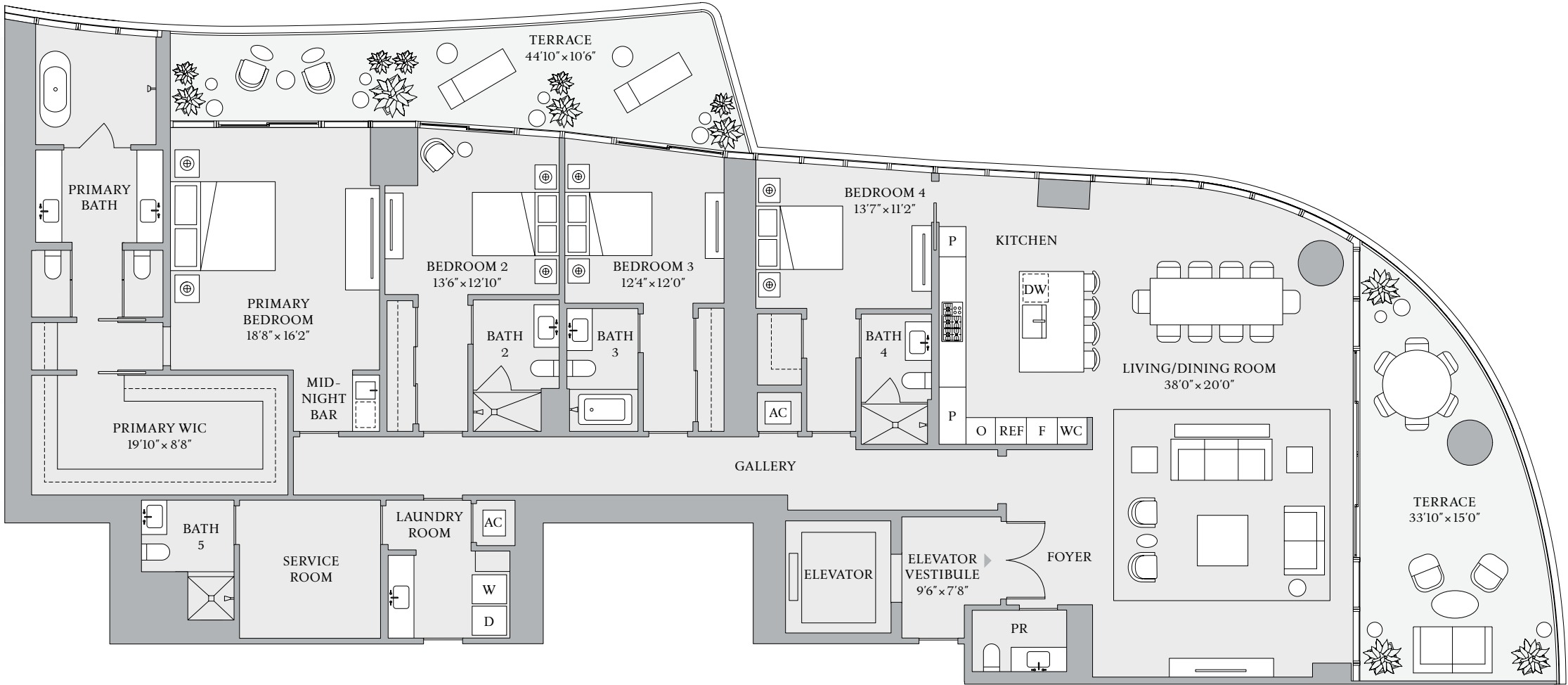
ST REGIS  
MIAMI  
THE RESIDENCES

RESIDENCE

A  
FLOORS 21–30, 33–41

4 BEDROOMS  
5 BATHROOMS  
1 POWDER ROOM

INTERIOR  
3,712 SF | 344.9 SQM  
EXTERIOR  
734 SF | 68.2 SQM

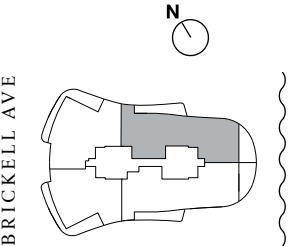


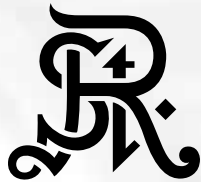
1809 Brickell Avenue, Miami, Florida 33129  
MiamiSRR.com 786 713 3556

RELATED INTEGRA

The dimensions stated for this Unit floor plan are approximate because there are various recognized methods for calculating the square footage of a Unit. The square footage stated here is calculated from the exterior boundaries of the exterior walls to the centerline of interior demising walls without deductions for cutouts, curves, or architectural features. This method typically results in quoted dimensions greater than the dimensions that would be determined by using other accepted methods. The definition of "Unit" and the calculation method to be relied upon is set forth in Developer's prospectus and the method set forth in the Developer's prospectus may result in a square footage calculation less than the method used here. Dimensions and Unit configuration may change during construction. The furniture illustrated is not included with purchase; the floorplan layout is not a guaranty on your use of space but is one example of uses of space. Consult the Developer's prospectus to understand the calculation of the Unit square footage and dimensions and what is included with purchase. Prices are not based on the square footage no matter the method of calculation of Unit dimensions and all prices are subject to change at any time.

ORAL REPRESENTATIONS CANNOT BE RELIED UPON AS CORRECTLY STATING REPRESENTATIONS OF THE DEVELOPER. FOR CORRECT REPRESENTATIONS, MAKE REFERENCE TO THIS BROCHURE AND TO THE DOCUMENTS REQUIRED BY SECTION 718.503, FLORIDA STATUTES, TO BE FURNISHED BY A DEVELOPER TO A BUYER OR LESSEE. The St. Regis Residences, Miami are developed by 1809 Brickell Property Owner, LLC ("Developer"). The St. Regis Residences, Miami are not owned, developed, or sold by Marriott International, Inc. or its affiliates ("Marriott"). The Developer uses the St. Regis marks under a license from Marriott, which has not confirmed the accuracy of any of the statements or representations made about the project by Developer. Sketches, renderings, or photographs depicting a floor plan are proposed only and the Developer reserves the right to modify, revise, or withdraw any or all of the same in Developer's sole discretion without prior notice. Locations and layouts of windows, doors, closets, plumbing fixtures, and structural and architectural design elements may vary from concept to actual construction. All depictions of appliances, plumbing fixtures, counters, countertops, cabinets, soffits, floor coverings, and other matters of design and décor detail or floor plans are conceptual and such drawings shown should not be relied upon as representations, express or implied, of the final detail of The St. Regis Residences, Miami or any Unit. There is no guarantee that any proposed hotel brands will be involved as depicted or at all upon, or following, the completion of The St. Regis Residences, Miami. Consult the prospectus of the Developer to understand this offering, the amenities, the proposed budgets, terms, conditions, specifications, fees, Unit dimensions, site plans, and to learn what is included with purchase and by payment of regular assessments. All prices are subject to change at any time and without notice and do not include optional features, design packages, furniture packages, or premiums for upgrades to any Unit. © 1809 Brickell Property Owner, LLC 2023.





RESIDENCE

AB

FLOORS 8–18

- 5 BEDROOMS
- 6 BATHROOMS
- 1 POWDER ROOM

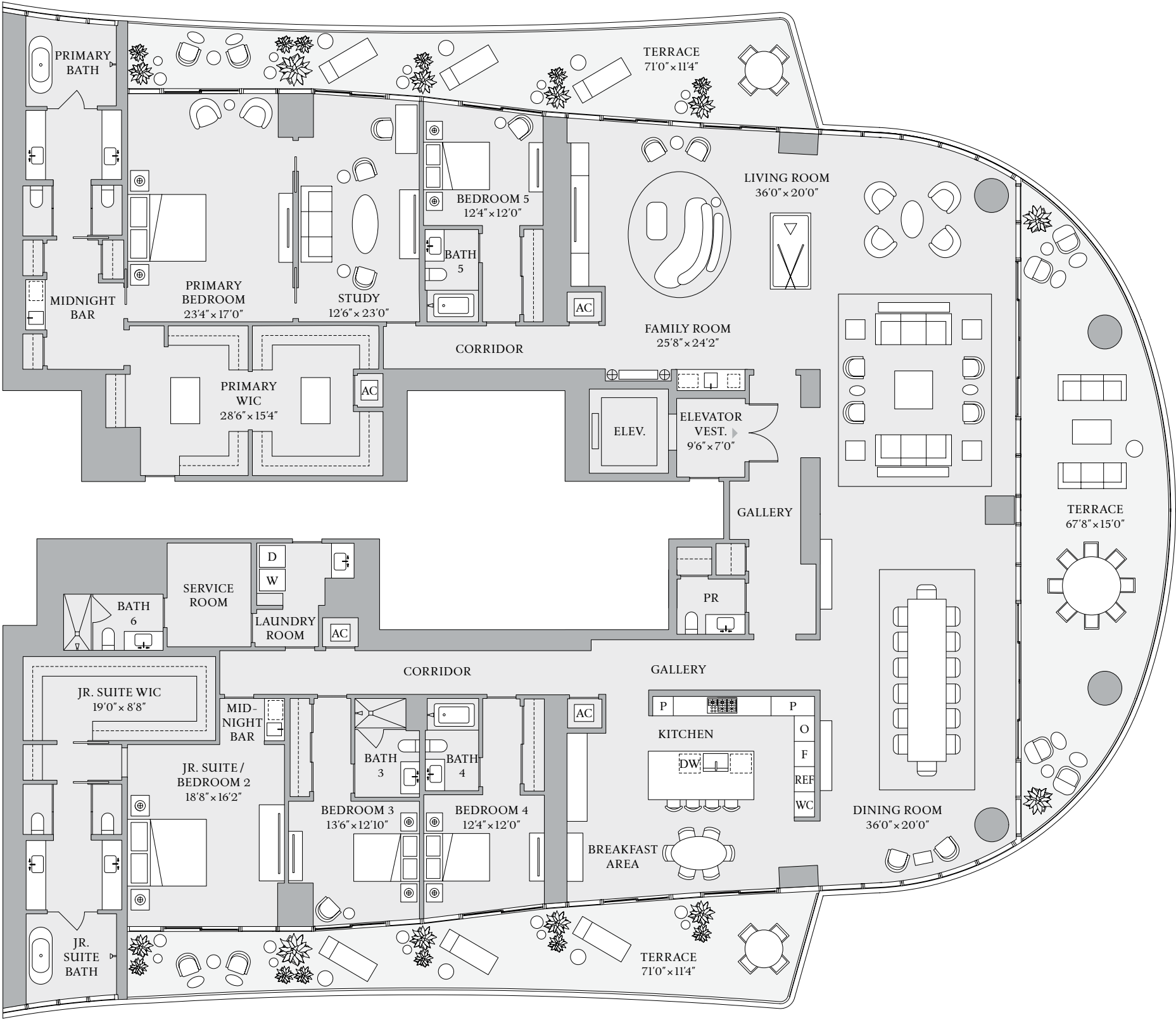
INTERIOR  
7,391 SF | 686.6 SQM  
EXTERIOR  
1,882 SF | 174.8 SQM

1809 Brickell Avenue, Miami, Florida 33129  
MiamiSRR.com 786 713 3556



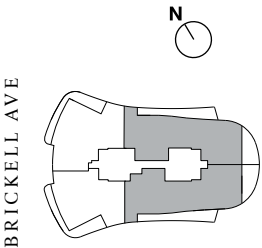
The dimensions stated for this Unit floor plan are approximate because there are various recognized methods for calculating the square footage of a Unit. The square footage stated here is calculated from the exterior boundaries of the exterior walls to the centerline of interior demising walls without deductions for cutouts, curves, or architectural features. This method typically results in quoted dimensions greater than the dimensions that would be determined by using other accepted methods. The definition of “Unit” and the calculation method to be relied upon is set forth in Developer’s prospectus and the method set forth in the Developer’s prospectus may result in a square footage calculation less than the method used here. Dimensions and Unit configuration may change during construction. The furniture illustrated is not included with purchase; the floorplan layout is not a guaranty on your use of space but is one example of uses of space. Consult the Developer’s prospectus to understand the calculation of the Unit square footage and dimensions and what is included with purchase. Prices are not based on the square footage no matter the method of calculation of Unit dimensions and all prices are subject to change at any time.

ORAL REPRESENTATIONS CANNOT BE RELIED UPON AS CORRECTLY STATING REPRESENTATIONS OF THE DEVELOPER. FOR CORRECT REPRESENTATIONS, MAKE REFERENCE TO THIS BROCHURE AND TO THE DOCUMENTS REQUIRED BY SECTION 718.503, FLORIDA STATUTES, TO BE FURNISHED BY A DEVELOPER TO A BUYER OR LESSEE. The St. Regis Residences, Miami are developed by 1809 Brickell Property Owner, LLC (“Developer”). The St. Regis Residences, Miami are not owned, developed, or sold by Marriott International, Inc. or its affiliates (“Marriott”). The Developer uses the St. Regis marks under a license from Marriott, which has not confirmed the accuracy of any of the statements or representations made about the project by Developer. Sketches, renderings, or photographs depicting a floor plan are proposed only and the Developer reserves the right to modify, revise, or withdraw any or all of the same in Developer’s sole discretion without prior notice. Locations and layouts of windows, doors, closets, plumbing fixtures, and structural and architectural design elements may vary from concept to actual construction. All depictions of appliances, plumbing fixtures, counters, countertops, cabinets, soffits, floor coverings, and other matters of design and décor detail or floor plans are conceptual and such drawings shown should not be relied upon as representations, express or implied, of the final detail of The St. Regis Residences, Miami or any Unit. There is no guarantee that any proposed hotel brands will be involved as depicted or at all upon, or following, the completion of The St. Regis Residences, Miami. Consult the prospectus of the Developer to understand this offering, the amenities, the proposed budgets, terms, conditions, specifications, fees, Unit dimensions, site plans, and to learn what is included with purchase and by payment of regular assessments. All prices are subject to change at any time and without notice and do not include optional features, design packages, furniture packages, or premiums for upgrades to any Unit. ©1809 Brickell Property Owner, LLC 2023.



ST REGIS  
MIAMI  
THE RESIDENCES

BISCAYNE BAY







ST REGIS  
MIAMI  
THE RESIDENCES

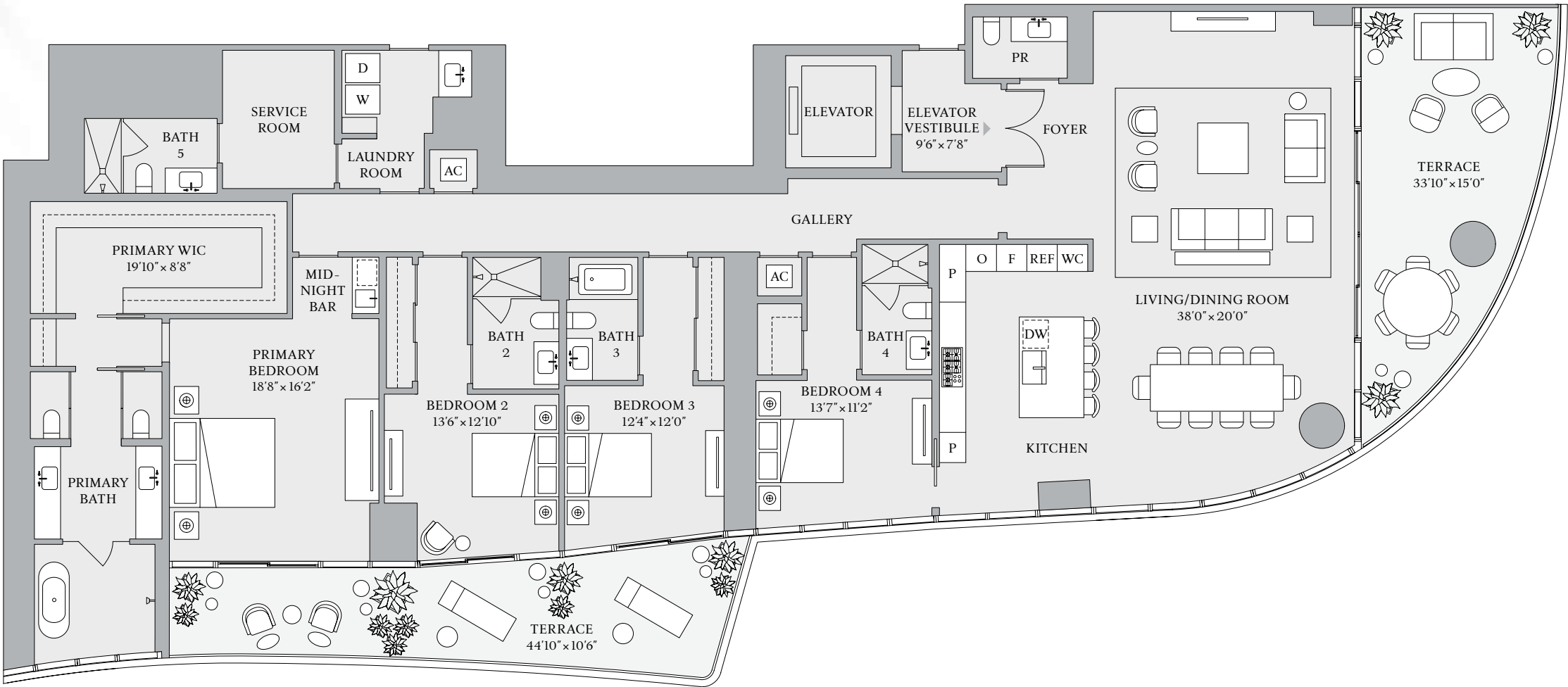
RESIDENCE

B

FLOORS 21–30, 33–41

- 4 BEDROOMS
- 5 BATHROOMS
- 1 POWDER ROOM

INTERIOR  
3,679 SF | 341.8 SQM  
EXTERIOR  
734 SF | 68.2 SQM

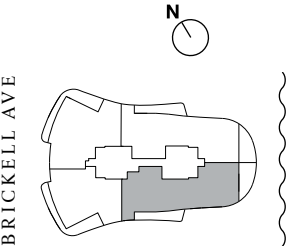


1809 Brickell Avenue, Miami, Florida 33129  
MiamiSRR.com 786 713 3556

RELATED INTEGRA

The dimensions stated for this Unit floor plan are approximate because there are various recognized methods for calculating the square footage of a Unit. The square footage stated here is calculated from the exterior boundaries of the exterior walls to the centerline of interior demising walls without deductions for cutouts, curves, or architectural features. This method typically results in quoted dimensions greater than the dimensions that would be determined by using other accepted methods. The definition of "Unit" and the calculation method to be relied upon is set forth in Developer's prospectus and the method set forth in the Developer's prospectus may result in a square footage calculation less than the method used here. Dimensions and Unit configuration may change during construction. The furniture illustrated is not included with purchase; the floorplan layout is not a guaranty on your use of space but is one example of uses of space. Consult the Developer's prospectus to understand the calculation of the Unit square footage and dimensions and what is included with purchase. Prices are not based on the square footage no matter the method of calculation of Unit dimensions and all prices are subject to change at any time.

ORAL REPRESENTATIONS CANNOT BE RELIED UPON AS CORRECTLY STATING REPRESENTATIONS OF THE DEVELOPER. FOR CORRECT REPRESENTATIONS, MAKE REFERENCE TO THIS BROCHURE AND TO THE DOCUMENTS REQUIRED BY SECTION 718.503, FLORIDA STATUTES, TO BE FURNISHED BY A DEVELOPER TO A BUYER OR LESSEE. The St. Regis Residences, Miami are developed by 1809 Brickell Property Owner, LLC ("Developer"). The St. Regis Residences, Miami are not owned, developed, or sold by Marriott International, Inc. or its affiliates ("Marriott"). The Developer uses the St. Regis marks under a license from Marriott, which has not confirmed the accuracy of any of the statements or representations made about the project by Developer. Sketches, renderings, or photographs depicting a floor plan are proposed only and the Developer reserves the right to modify, revise, or withdraw any or all of the same in Developer's sole discretion without prior notice. Locations and layouts of windows, doors, closets, plumbing fixtures, and structural and architectural design elements may vary from concept to actual construction. All depictions of appliances, plumbing fixtures, counters, countertops, cabinets, soffits, floor coverings, and other matters of design and décor detail or floor plans are conceptual and such drawings shown should not be relied upon as representations, express or implied, of the final detail of The St. Regis Residences, Miami or any Unit. There is no guarantee that any proposed hotel brands will be involved as depicted or at all upon, or following, the completion of The St. Regis Residences, Miami. Consult the prospectus of the Developer to understand this offering, the amenities, the proposed budgets, terms, conditions, specifications, fees, Unit dimensions, site plans, and to learn what is included with purchase and by payment of regular assessments. All prices are subject to change at any time and without notice and do not include optional features, design packages, furniture packages, or premiums for upgrades to any Unit. © 1809 Brickell Property Owner, LLC 2023.





# Ground Floor Amenity

- Key
1.

Reception
2.

Gallery
3.

Host
4.

Bar and Restaurant
5.

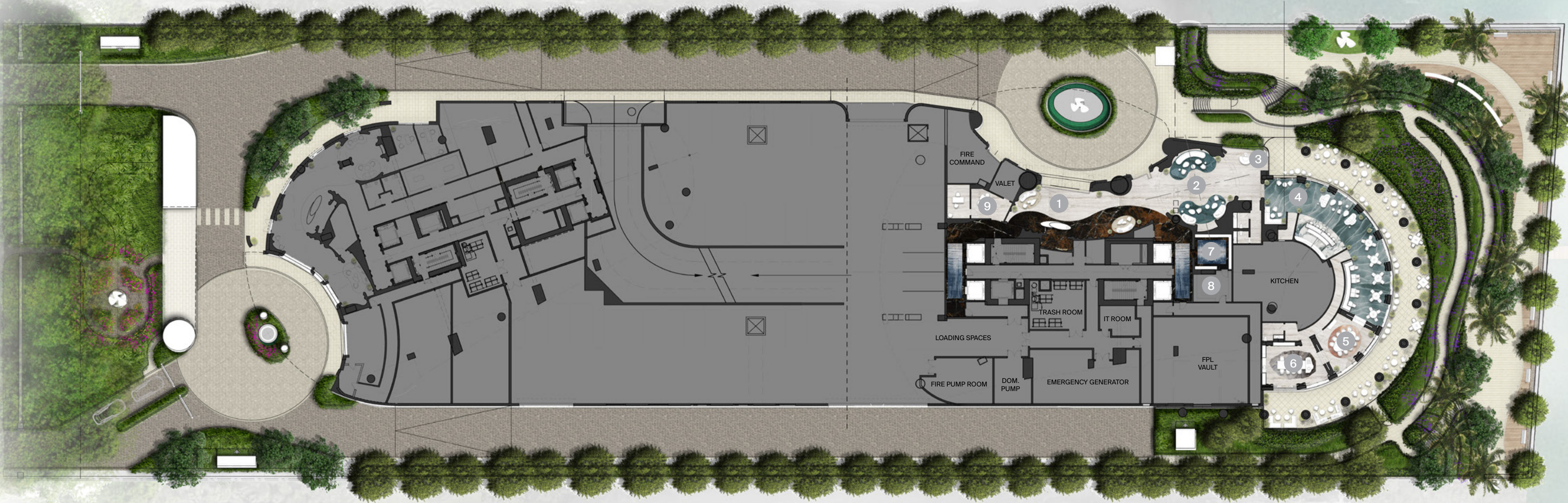
PDR
6.

Wine Tasting Salon
7.

Mail Room
8.

Package Room
9.

Management Offices





# Third Floor Amenity

- Key
1.

East Tower Pool
2.

Hot Tub
3.

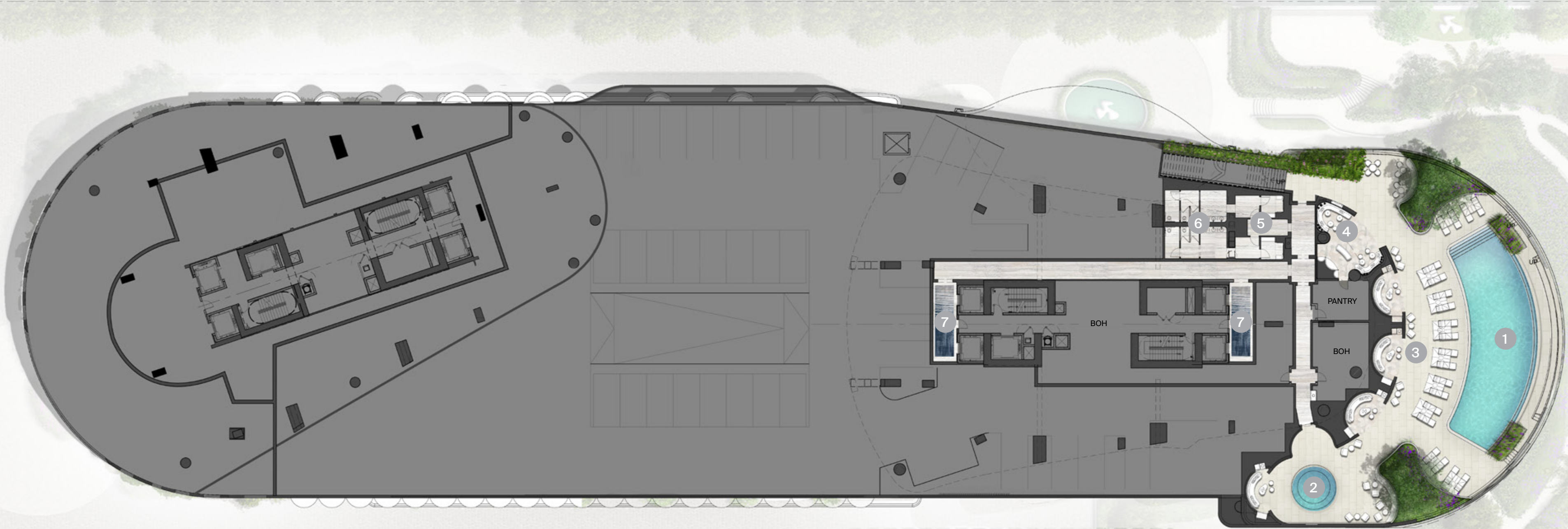
Cabana
4.

Juice Bar
5.

Changing Room
6.

Restroom
7.

Elevator Lobby

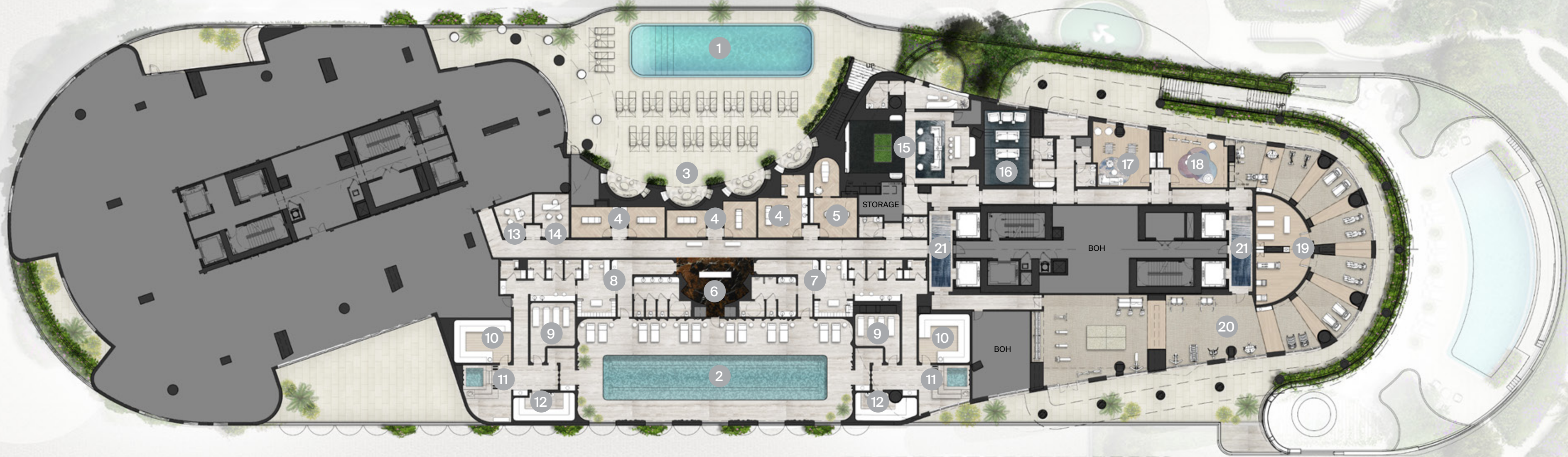




# Fourth Floor Amenity

## Key

- 1. West Tower Pool
- 2. Indoor Lap Pool
- 3. Cabana
- 4. Treatment Room
- 5. Mani and Pedi
- 6. Spa Reception
- 7. Men's Locker Room
- 8. Women's Locker Room
- 9. Salt Room
- 10. Sauna
- 11. Plunge Pool
- 12. Steam Room
- 13. Residence's Office
- 14. Director's Office
- 15. Multi-sports VR
- 16. Screen Room
- 17. Teen's Room
- 18. Kid's Room
- 19. Yoga and Pilates
- 20. Fitness Center
- 21. Elevator Lobby

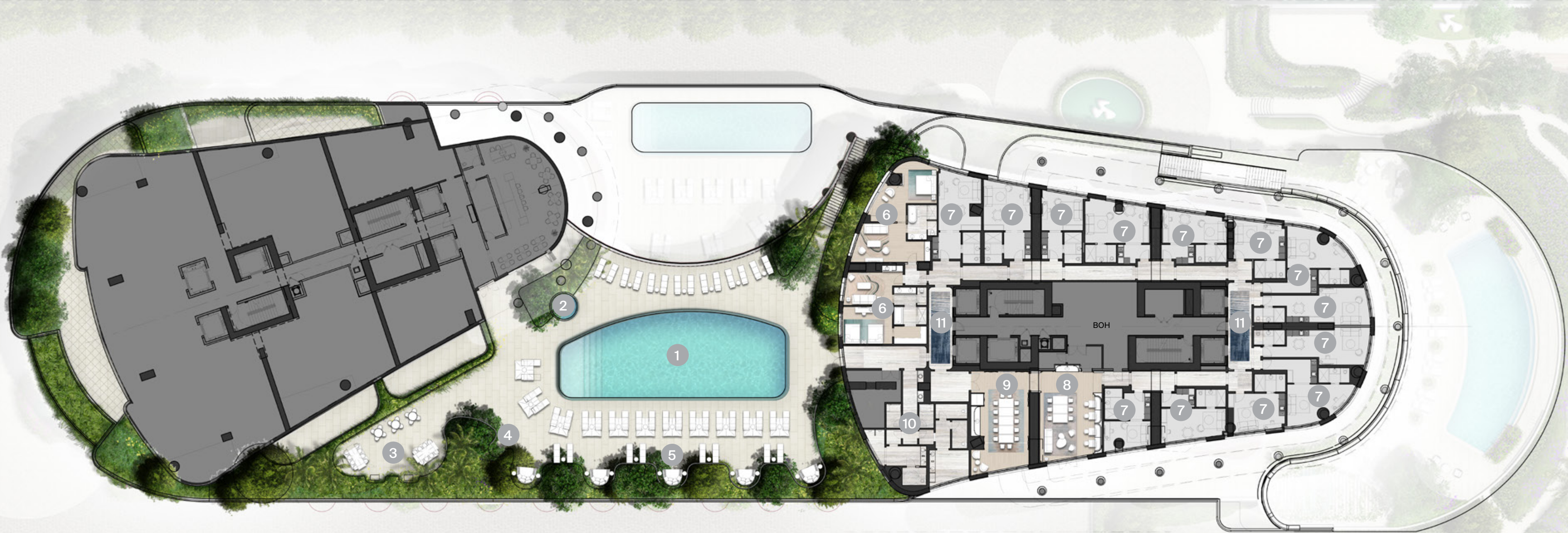




# Fifth Floor Amenity

## Key

- 1. Common Pool
- 2. Hot Tub
- 3. Grilling Area
- 4. Outdoor Shower
- 5. Cafe
- 6. Guest Suite
- 7. Private Suites
- 8. Co-working Lounge
- 9. Conference Room
- 10. Changing Room
- 11. Elevator Lobby





# Sky Deck Amenity

- Key
1.

Drawing Room
2.

Sky Bar
3.

Outdoor Patio
4.

Cognac Room
5.

Billiards Room

