



FLOOR PLANS

pier SIXTY-SIX
RESIDENCES

pier SIXTY-SIX
 RESIDENCES

RESORT
 RESIDENCES

C

3 BEDROOMS
 3 BATHROOMS

Interior
 1,645 SQFT
 152.8 SM

Terrace
 86 SQFT
 8.0 SM

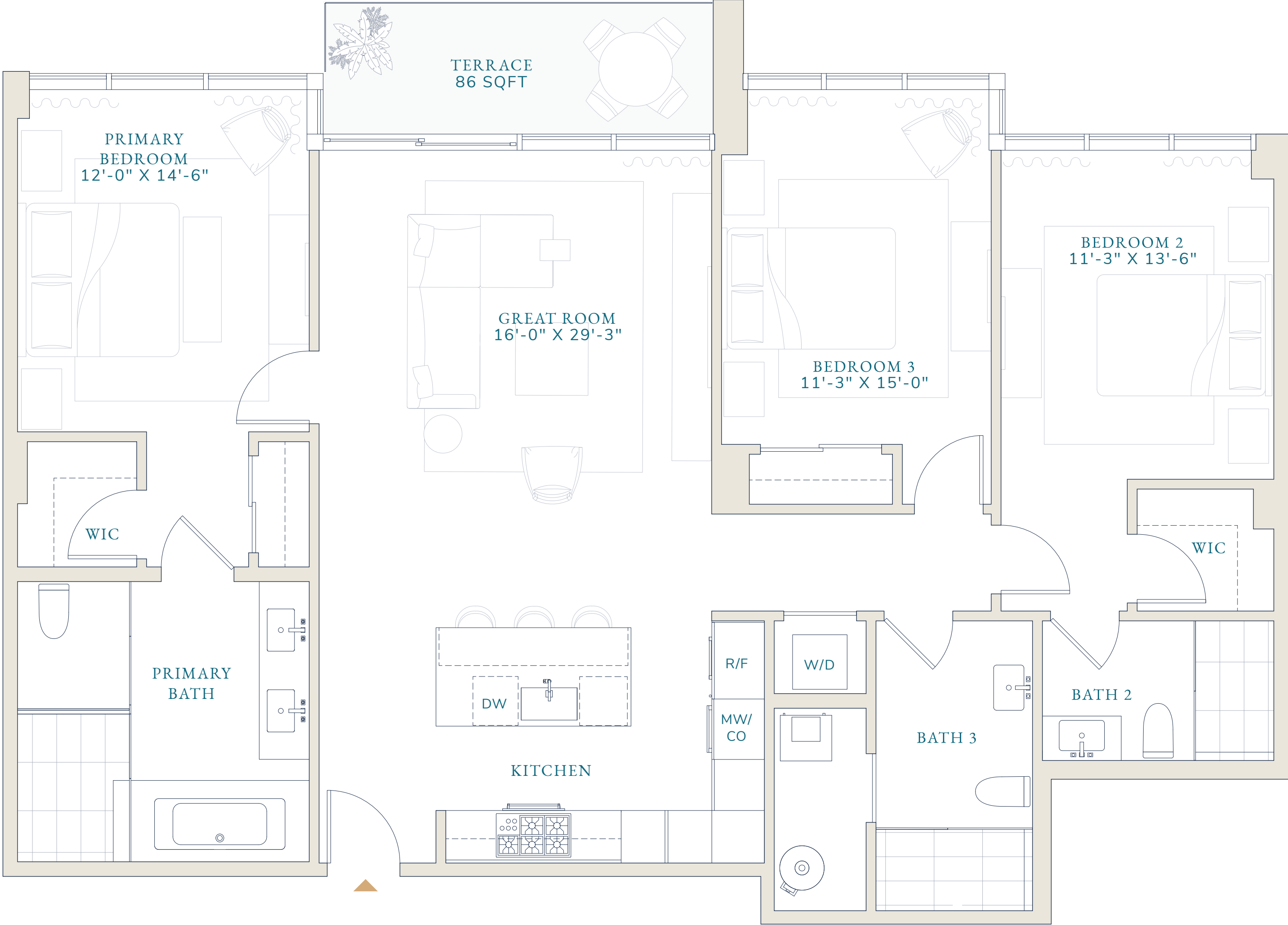
Total
 1,731 SQFT
 160.8 SM



RESORT
 RESIDENCE 1



RESORT
 RESIDENCE 2



0' 2' 4' 8'



Stated dimensions are measured to the exterior boundaries of the exterior walls and the centerline of interior demising walls (without deductions for interior columns, shear walls or shafts) and in fact vary from the dimensions that would be determined by using the description and definition of the "Unit" set forth in the Declaration (which generally only includes the interior airspace between the perimeter walls and excludes interior structural components, shear walls and shafts). For the calculation of the unit area following the definition of the unit set forth in the Declaration, see Exhibit "3" of the Declaration. Additionally, measurements of rooms set forth on any floor plan are generally taken at the greatest points of each given room (as if the room were a perfect rectangle), without regard for any cutouts. Accordingly, the area of the actual room will typically be smaller than the product obtained by multiplying the stated length times width. All dimensions are approximate, and all floor plans and development plans are subject to change. Designed by Signature Creative.

RESORT
 RESIDENCES

D

2 BEDROOMS
 3 BATHROOMS

Interior
 1,738 SQFT
 161.5 SM

Terrace
 320 SQFT
 29.7 SM

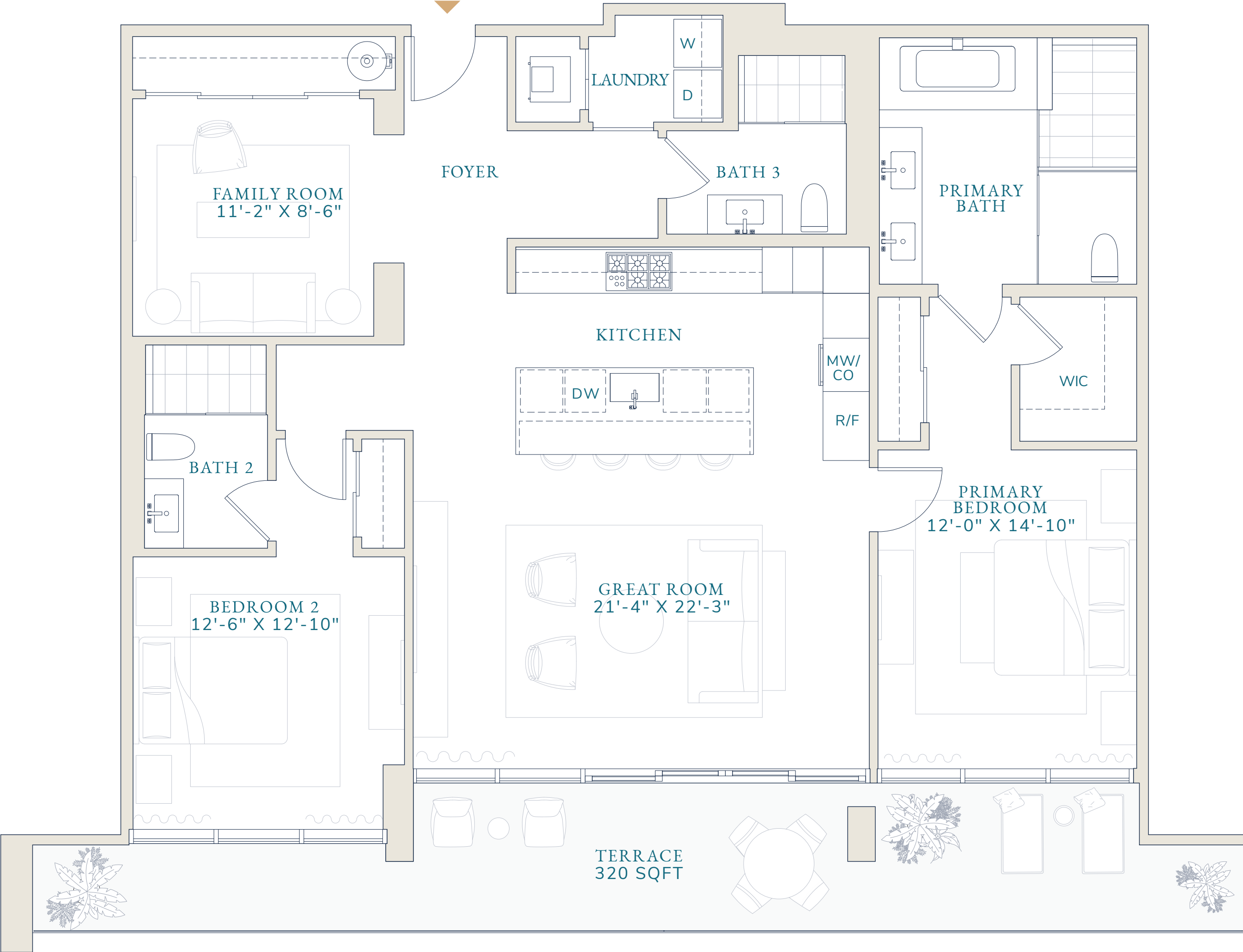
Total
 2,058 SQFT
 191.2 SM



RESORT
 RESIDENCE 1



RESORT
 RESIDENCE 2



Stated dimensions are measured to the exterior boundaries of the exterior walls and the centerline of interior demising walls (without deductions for interior columns, shear walls or shafts) and in fact vary from the dimensions that would be determined by using the description and definition of the "Unit" set forth in the Declaration (which generally only includes the interior airspace between the perimeter walls and excludes interior structural components, shear walls and shafts). For the calculation of the unit area following the definition of the unit set forth in the Declaration, see Exhibit "3" of the Declaration. Additionally, measurements of rooms set forth on any floor plan are generally taken at the greatest points of each given room (as if the room were a perfect rectangle), without regard for any cutouts. Accordingly, the area of the actual room will typically be smaller than the product obtained by multiplying the stated length times width. All dimensions are approximate, and all floor plans and development plans are subject to change. Designed by Signature Creative.

pier SIXTY-SIX
 RESIDENCES

RESORT
 RESIDENCES

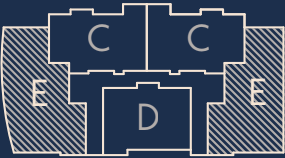
E

3 BEDROOMS
 3.5 BATHROOMS

Interior
 2,205 SQFT
 204.9 SM

Terrace
 828 SQFT
 77.0 SM

Total
 3,033 SQFT
 281.8 SM

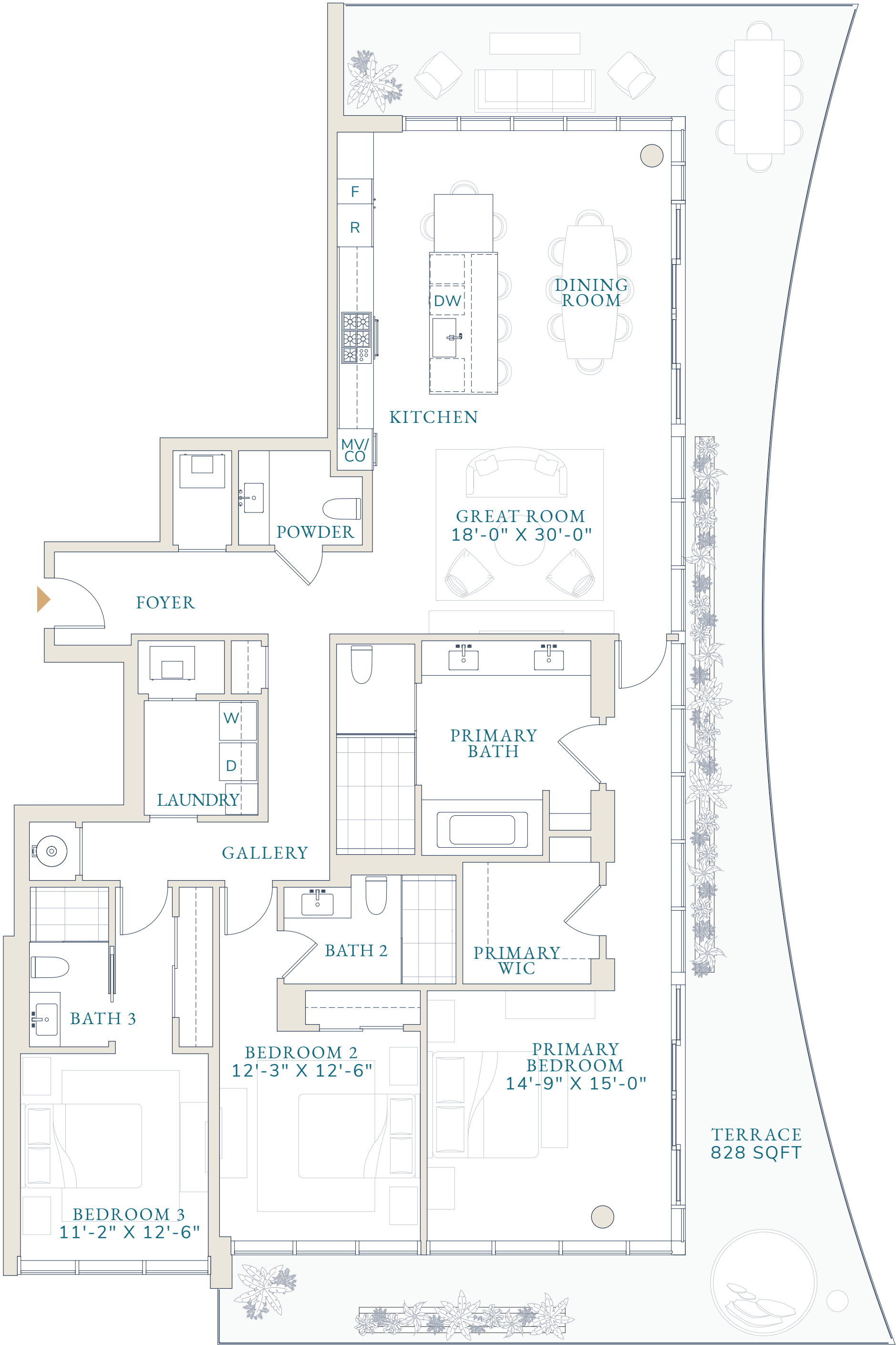


RESORT
 RESIDENCE 1



RESORT
 RESIDENCE 2

WATER VIEW



0' 3' 6' 12'



Stated dimensions are measured to the exterior boundaries of the exterior walls and the centerline of interior demising walls (without deductions for interior columns, shear walls or shafts) and in fact vary from the dimensions that would be determined by using the description and definition of the "Unit" set forth in the Declaration (which generally only includes the interior airspace between the perimeter walls and excludes interior structural components, shear walls and shafts). For the calculation of the unit area following the definition of the unit set forth in the Declaration, see Exhibit "3" of the Declaration. Additionally, measurements of rooms set forth on any floor plan are generally taken at the greatest points of each given room (as if the room were a perfect rectangle), without regard for any cutouts. Accordingly, the area of the actual room will typically be smaller than the product obtained by multiplying the stated length times width. All dimensions are approximate, and all floor plans and development plans are subject to change. Designed by Signature Creative.



FLOOR PLANS

pier SIXTY-SIX

RESIDENCES

Stated dimensions are measured to the exterior boundaries of the exterior walls and the centerline of interior demising walls (without deductions for interior columns, shear walls or shafts) and in fact vary from the dimensions that would be determined by using the description and definition of the "Unit" set forth in the Declaration (which generally only includes the interior airspace between the perimeter walls and excludes interior structural components, shear walls and shafts). For the calculation of the unit area following the definition of the unit set forth in the Declaration, see Exhibit "3" of the Declaration. Additionally, measurements of rooms set forth on any floor plan are generally taken at the greatest points of each given room (as if the room were a perfect rectangle), without regard for any cutouts. Accordingly, the area of the actual room will typically be smaller than the product obtained by multiplying the stated length times width. All dimensions are approximate, and all floor plans and development plans are subject to change.

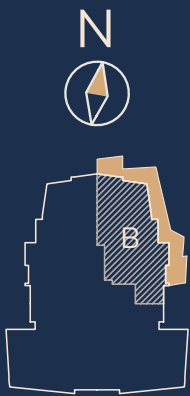
pier SIXTY-SIX
 RESIDENCES

INDIGO CONDOMINIUM
 RESIDENCES

B

3 BEDROOMS
 3 BATHROOMS
 1 POWDER ROOM

Interior
 2,896 SQFT
 269.05 SM
 Terrace
 1,160 SQFT
 107.77 SM
 Total
 4,056 SQFT
 376.81 SM



0' 3' 6' 12'



Stated dimensions are measured to the exterior boundaries of the exterior walls and the centerline of interior demising walls (without deductions for interior columns, shear walls or shafts) and in fact vary from the dimensions that would be determined by using the description and definition of the "Unit" set forth in the Declaration (which generally only includes the interior airspace between the perimeter walls and excludes interior structural components, shear walls and shafts). For the calculation of the unit area following the definition of the unit set forth in the Declaration, see Exhibit "3" of the Declaration. Additionally, measurements of rooms set forth on any floor plan are generally taken at the greatest points of each given room (as if the room were a perfect rectangle), without regard for any cutouts. Accordingly, the area of the actual room will typically be smaller than the product obtained by multiplying the stated length times width. All dimensions are approximate, and all floor plans and development plans are subject to change.

pier SIXTY-SIX
 RESIDENCES

INDIGO CONDOMINIUM
 RESIDENCES

C

3 BEDROOMS
 3 BATHROOMS
 1 POWDER ROOM

Interior
 2,837 SQFT
 263.57 SM

Terrace
 1,045 SQFT
 97.08 SM

Total
 3,882 SQFT
 360.65 SM



Stated dimensions are measured to the exterior boundaries of the exterior walls and the centerline of interior demising walls (without deductions for interior columns, shear walls or shafts) and in fact vary from the dimensions that would be determined by using the description and definition of the "Unit" set forth in the Declaration (which generally only includes the interior airspace between the perimeter walls and excludes interior structural components, shear walls and shafts). For the calculation of the unit area following the definition of the unit set forth in the Declaration, see Exhibit "3" of the Declaration. Additionally, measurements of rooms set forth on any floor plan are generally taken at the greatest points of each given room (as if the room were a perfect rectangle), without regard for any cutouts. Accordingly, the area of the actual room will typically be smaller than the product obtained by multiplying the stated length times width. All dimensions are approximate, and all floor plans and development plans are subject to change.

pier SIXTY-SIX
 RESIDENCES

INDIGO CONDOMINIUM
 RESIDENCES

D

3 BEDROOMS
 3 BATHROOMS
 1 POWDER ROOM

Interior
 2,837 SQFT
 263.57 SM
 Terrace
 1,045 SQFT
 97.08 SM
 Total
 3,882 SQFT
 360.65 SM



WATER VIEW



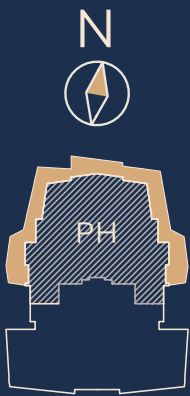
Stated dimensions are measured to the exterior boundaries of the exterior walls and the centerline of interior demising walls (without deductions for interior columns, shear walls or shafts) and in fact vary from the dimensions that would be determined by using the description and definition of the "Unit" set forth in the Declaration (which generally only includes the interior airspace between the perimeter walls and excludes interior structural components, shear walls and shafts). For the calculation of the unit area following the definition of the unit set forth in the Declaration, see Exhibit "3" of the Declaration. Additionally, measurements of rooms set forth on any floor plan are generally taken at the greatest points of each given room (as if the room were a perfect rectangle), without regard for any cutouts. Accordingly, the area of the actual room will typically be smaller than the product obtained by multiplying the stated length times width. All dimensions are approximate, and all floor plans and development plans are subject to change.

INDIGO CONDOMINIUM
 RESIDENCES

Penthouse

5 BEDROOMS
 5 BATHROOMS
 1 POWDER ROOM

Interior
 5,824 SQFT
 541.07 SM
 Terrace
 2,375 SQFT
 220.64 SM
 Total
 8,199 SQFT
 761.71 SM



Stated dimensions are measured to the exterior boundaries of the exterior walls and the centerline of interior demising walls (without deductions for interior columns, shear walls or shafts) and in fact vary from the dimensions that would be determined by using the description and definition of the "Unit" set forth in the Declaration (which generally only includes the interior airspace between the perimeter walls and excludes interior structural components, shear walls and shafts). For the calculation of the unit area following the definition of the unit set forth in the Declaration, see Exhibit "3" of the Declaration. Additionally, measurements of rooms set forth on any floor plan are generally taken at the greatest points of each given room (as if the room were a perfect rectangle), without regard for any cutouts. Accordingly, the area of the actual room will typically be smaller than the product obtained by multiplying the stated length times width. All dimensions are approximate, and all floor plans and development plans are subject to change.



FLOOR PLANS

pier SIXTY-SIX
RESIDENCES

pier SIXTY-SIX
 RESIDENCES

AZUL CONDOMINIUM
 RESIDENCES

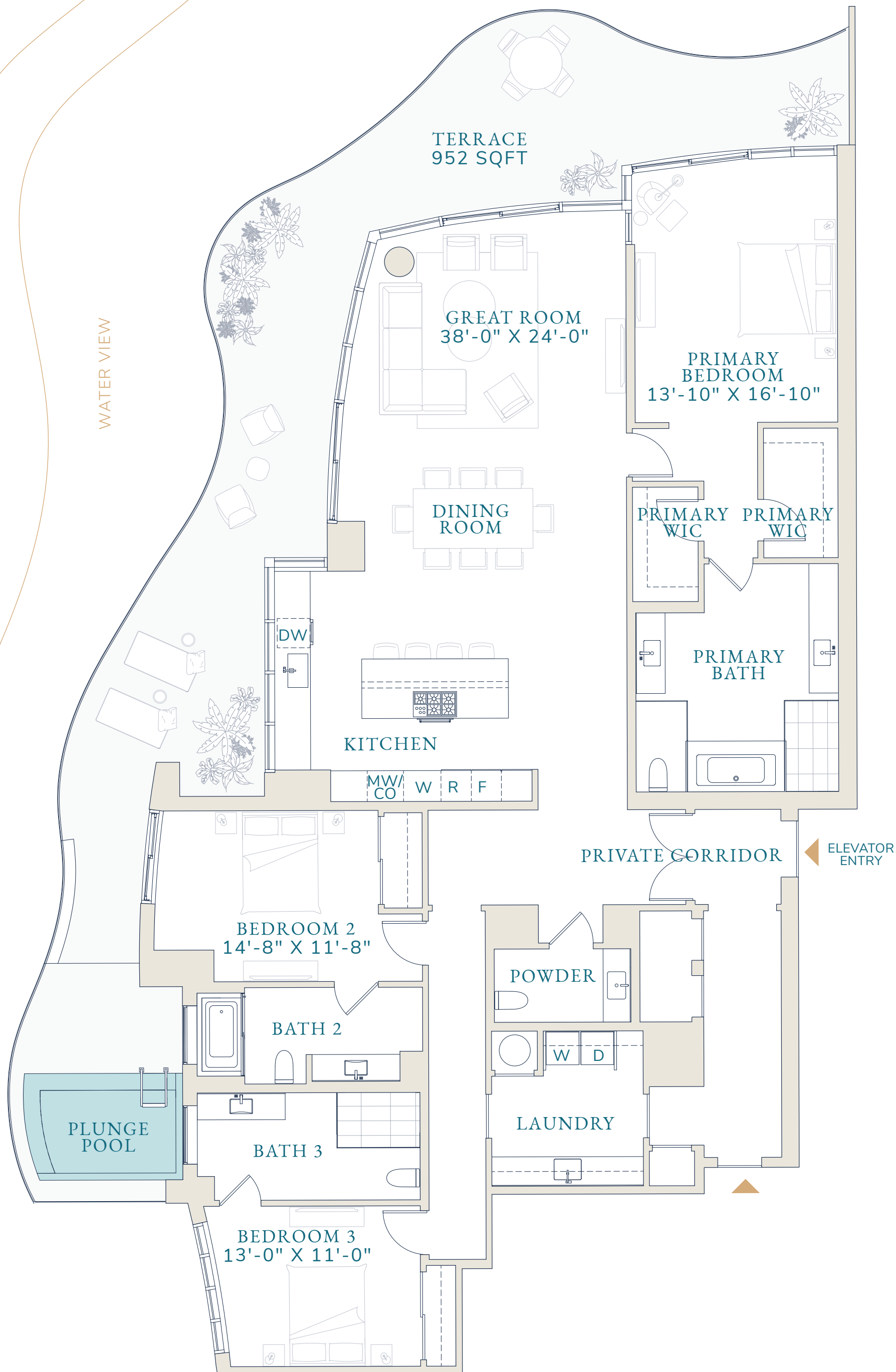
A

3 BEDROOMS
 3.5 BATHROOMS

Interior
 2,878 SQFT
 267.4 SM

Terrace
 952 SQFT
 88.4 SM

Total
 3,830 SQFT
 355.8 SM



Stated dimensions are measured to the exterior boundaries of the exterior walls and the centerline of interior demising walls (without deductions for interior columns, shear walls or shafts) and in fact vary from the dimensions that would be determined by using the description and definition of the "Unit" set forth in the Declaration (which generally only includes the interior airspace between the perimeter walls and excludes interior structural components, shear walls and shafts). For the calculation of the unit area following the definition of the unit set forth in the Declaration, see Exhibit "3" of the Declaration. Additionally, measurements of rooms set forth on any floor plan are generally taken at the greatest points of each given room (as if the room were a perfect rectangle), without regard for any cutouts. Accordingly, the area of the actual room will typically be smaller than the product obtained by multiplying the stated length times width. All dimensions are approximate, and all floor plans and development plans are subject to change. Designed by Signature Creative.

pier SIXTY-SIX
 RESIDENCES

AZUL CONDOMINIUM
 RESIDENCES

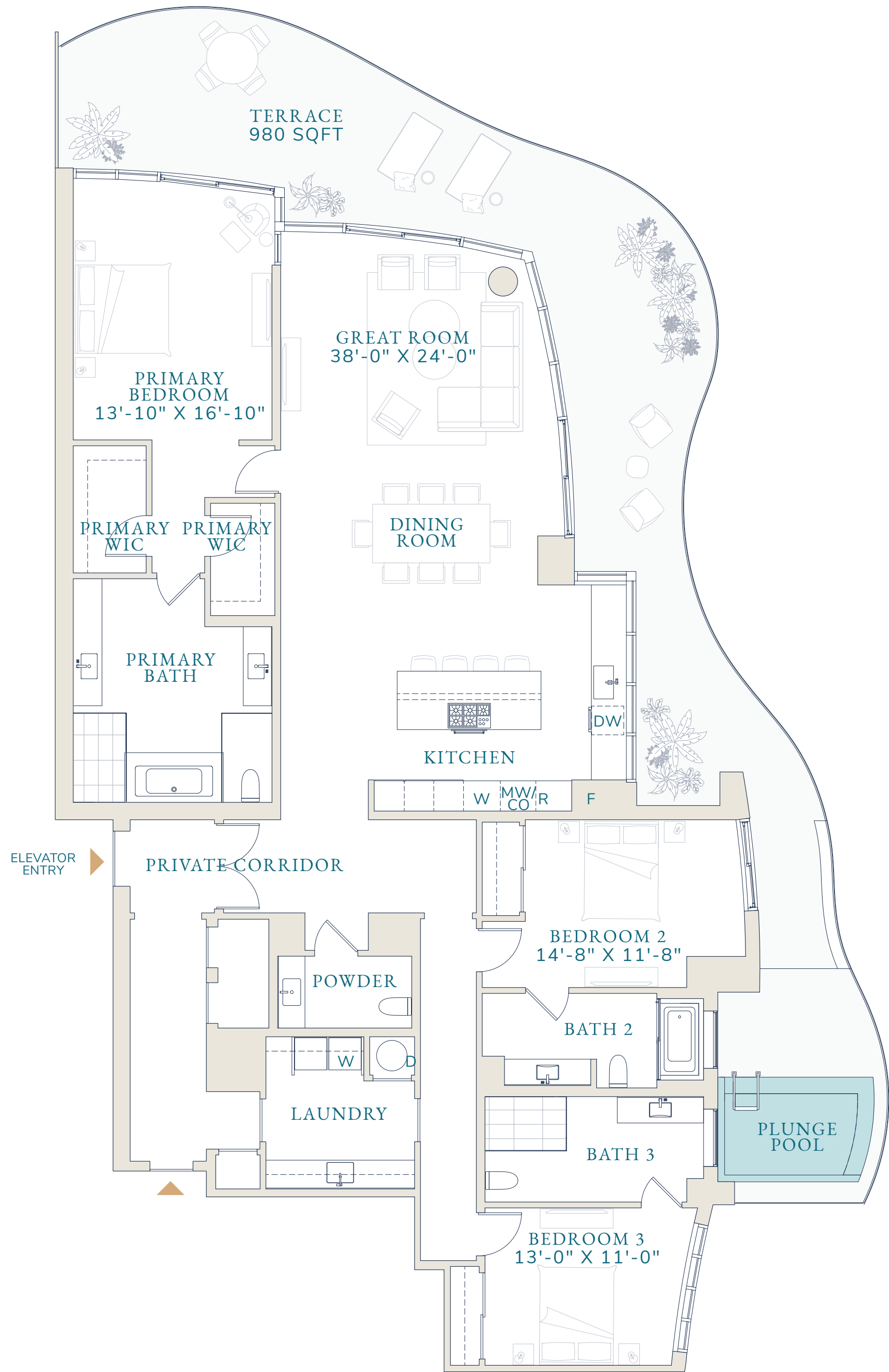
B

3 BEDROOMS
 3.5 BATHROOMS

Interior
 2,878 SQFT
 267.4 SM

Terrace
 980 SQFT
 91 SM

Total
 3,858 SQFT
 358.4 SM



Stated dimensions are measured to the exterior boundaries of the exterior walls and the centerline of interior demising walls (without deductions for interior columns, shear walls or shafts) and in fact vary from the dimensions that would be determined by using the description and definition of the "Unit" set forth in the Declaration (which generally only includes the interior airspace between the perimeter walls and excludes interior structural components, shear walls and shafts). For the calculation of the unit area following the definition of the unit set forth in the Declaration, see Exhibit "3" of the Declaration. Additionally, measurements of rooms set forth on any floor plan are generally taken at the greatest points of each given room (as if the room were a perfect rectangle), without regard for any cutouts. Accordingly, the area of the actual room will typically be smaller than the product obtained by multiplying the stated length times width. All dimensions are approximate, and all floor plans and development plans are subject to change. Designed by Signature Creative.

pier SIXTY-SIX
 RESIDENCES

AZUL CONDOMINIUM
 RESIDENCES

C

3 BEDROOMS
 3.5 BATHROOMS

Interior
 2,718 SQFT
 252.5 SM

Terrace
 917 SQFT
 85.2 SM

Total
 3,635 SQFT
 337.7 SM



pier SIXTY-SIX
 RESIDENCES

AZUL CONDOMINIUM
 RESIDENCES

D

3 BEDROOMS
 3.5 BATHROOMS

Interior
 2,718 SQFT
 252.5 SM

Terrace
 917 SQFT
 85.2 SM

Total
 3,635 SQFT
 337.7 SM



CONDOMINIUM
 RESIDENCES

WATER VIEW



0' 3' 6' 12'



Stated dimensions are measured to the exterior boundaries of the exterior walls and the centerline of interior demising walls (without deductions for interior columns, shear walls or shafts) and in fact vary from the dimensions that would be determined by using the description and definition of the "Unit" set forth in the Declaration (which generally only includes the interior airspace between the perimeter walls and excludes interior structural components, shear walls and shafts). For the calculation of the unit area following the definition of the unit set forth in the Declaration, see Exhibit "3" of the Declaration. Additionally, measurements of rooms set forth on any floor plan are generally taken at the greatest points of each given room (as if the room were a perfect rectangle), without regard for any cutouts. Accordingly, the area of the actual room will typically be smaller than the product obtained by multiplying the stated length times width. All dimensions are approximate, and all floor plans and development plans are subject to change. Designed by Signature Creative.