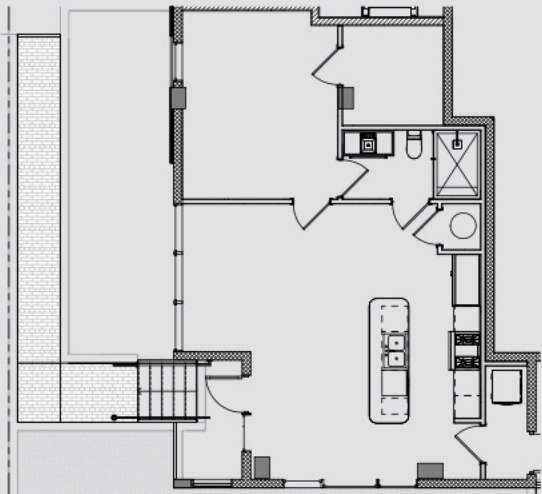
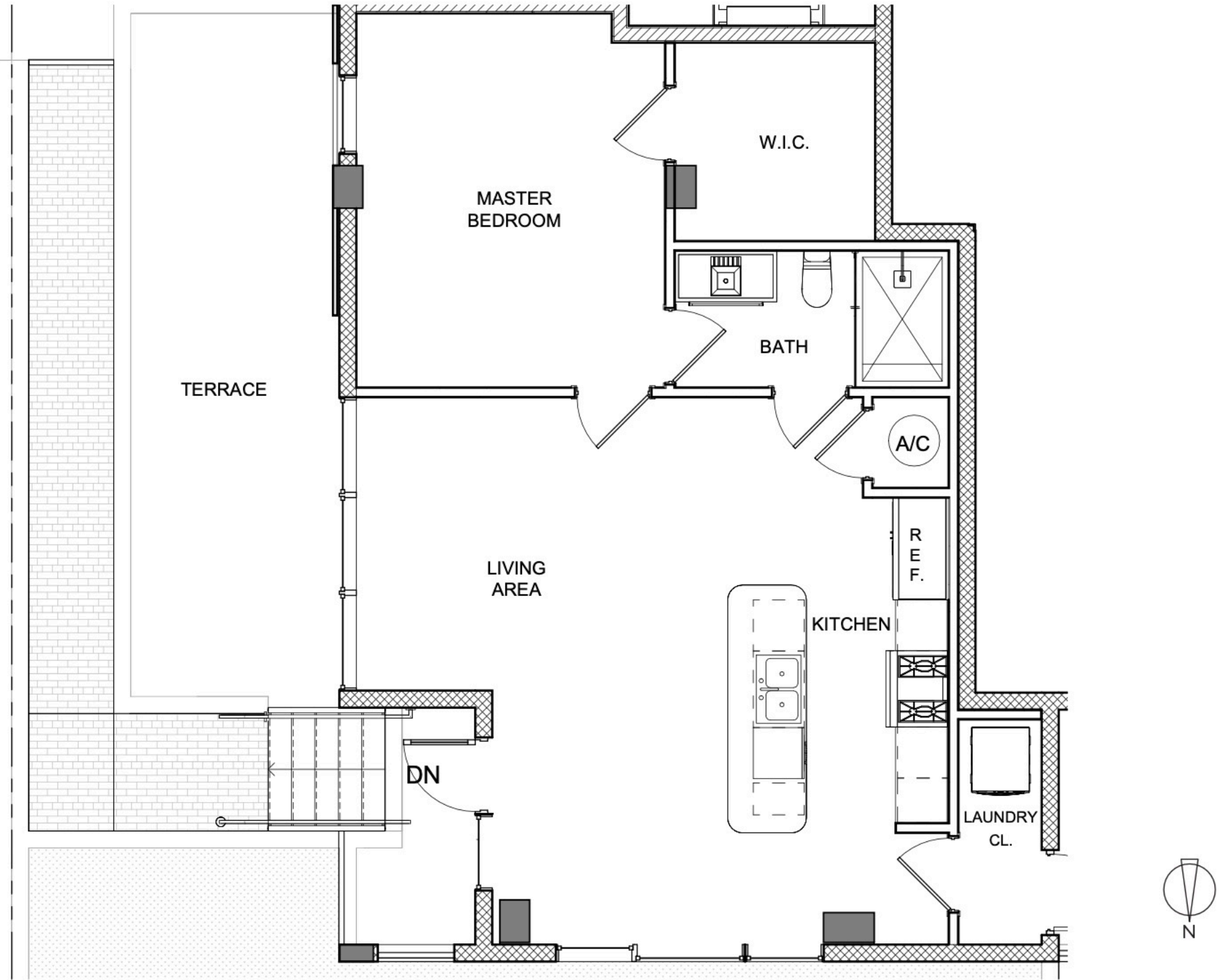


# 14 WEST

## GARDEN RESIDENCE 101

1 BED / 1 BATH

FLOOR LEVEL :	LEVEL 01
INDOOR LIVING :	675 FT2 / 63 M2
OUTDOOR LIVING :	375 FT2 / 35 M2
TOTAL LIVING :	1,050 FT2 / 98 M2



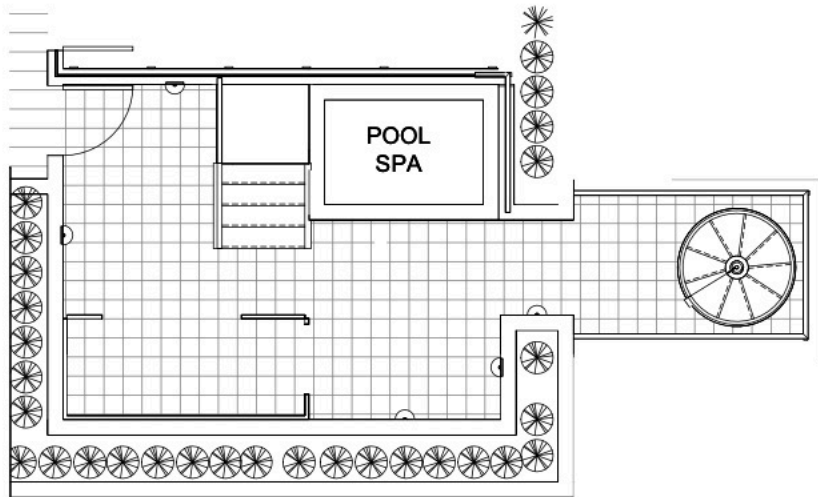
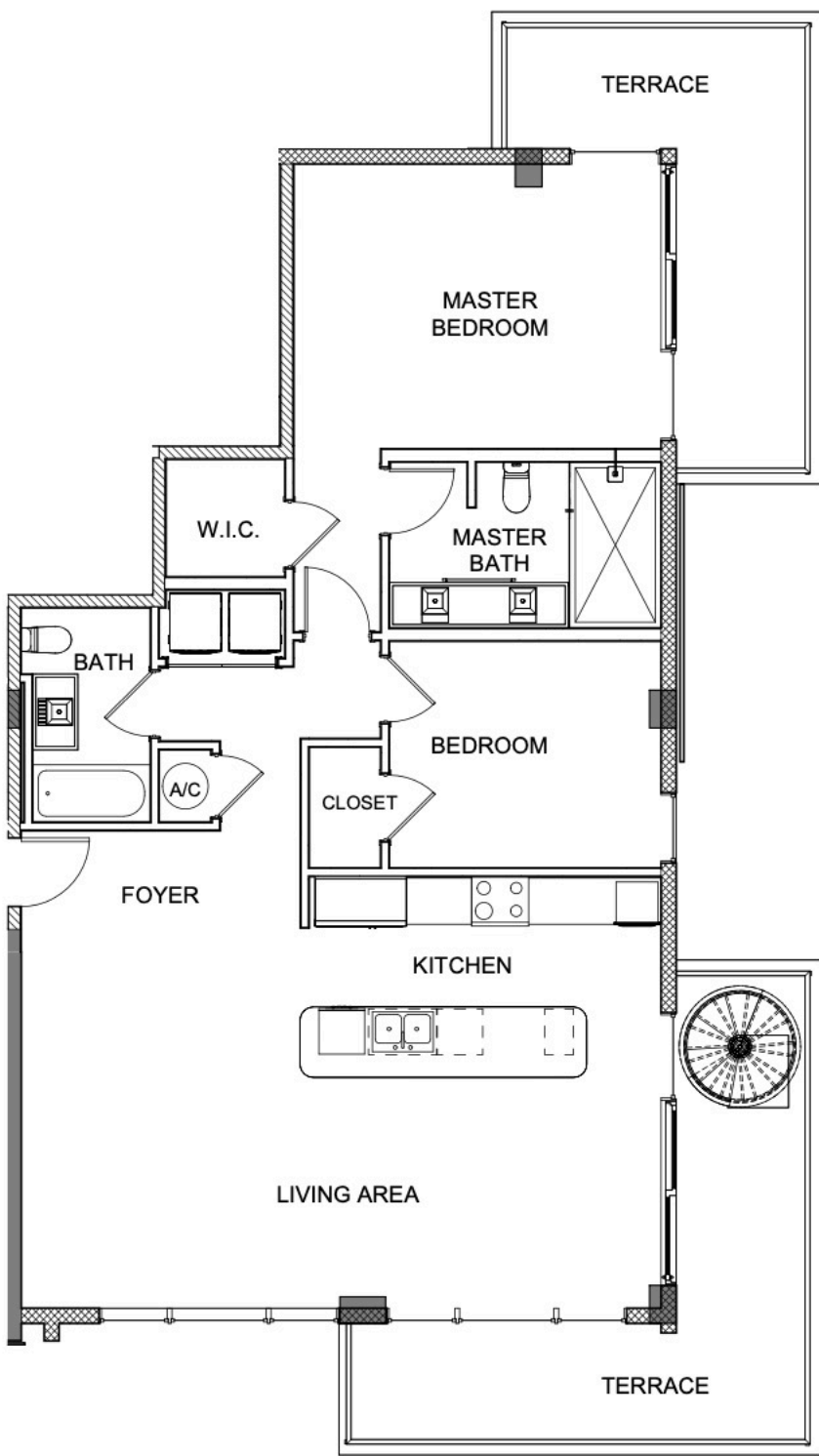
### 1414 WEST AVENUE, MIAMI BEACH FLORIDA

All depictions of matters of detail shown hereon, including, without limitation, items of finish, furniture and decoration, are conceptual only and are not necessarily included in the Unit. For a correct representation of the items included in the Unit, see the Purchase Agreement. Stated dimensions shown hereon are approximate and are measured to the interior face of interior walls. All square footage/square meter calculations are determined from exterior face of exterior walls and centerline of dimising walls. This method of measurement varies from, and is larger than, the dimensions that would be determined by using the description and definition of the "Unit" set forth in the Declaration (which generally includes the interior airspace between the perimeter walls and excludes interior structural components). Note that measurements of rooms set forth on this floor plan are generally taken at the greatest point of each given room (as if the room were a perfect rectangle), without regard for any cutouts. Accordingly, the area of the actual room will typically be smaller than the product obtained by multiplying the stated length times width. All dimensions are approximate and may vary with actual construction.

## PENTHOUSE 04

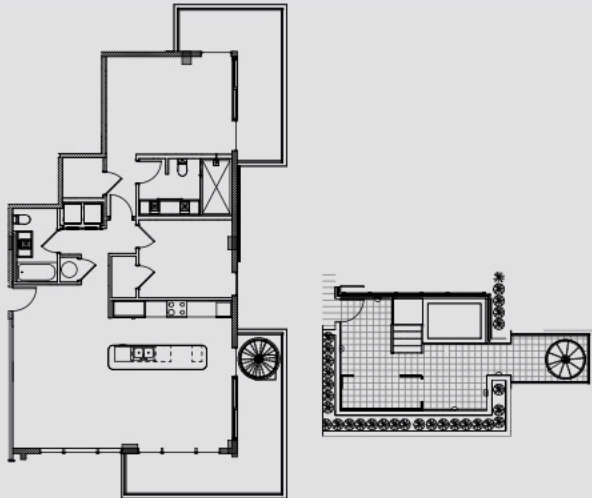
2 BED / 2 BATH

FLOOR LOCATION : LEVEL 04  
 INDOOR LIVING : 1,293 FT<sup>2</sup> / 120 M<sup>2</sup>  
 OUTDOOR LIVING : 792 FT<sup>2</sup> / 74 M<sup>2</sup>  
 TOTAL LIVING : 2,085 FT<sup>2</sup> / 194 M<sup>2</sup>



### 1414 WEST AVENUE, MIAMI BEACH FLORIDA

All depictions of matters of detail shown hereon, including, without limitation, items of finish, furniture and decoration, are conceptual only and are not necessarily included in the Unit. For a correct representation of the items included in the Unit, see the Purchase Agreement. Stated dimensions shown hereon are approximate and are measured to the interior face of interior walls. All square footage/square meter calculations are determined from exterior face of exterior walls and centerline of dimising walls. This method of measurement varies from, and is larger than, the dimensions that would be determined by using the description and definition of the "Unit" set forth in the Declaration (which generally includes the interior airspace between the perimeter walls and excludes interior structural components). Note that measurements of rooms set forth on this floor plan are generally taken at the greatest point of each given room (as if the room were a perfect rectangle), without regard for any cutouts. Accordingly, the area of the actual room will typically be smaller than the product obtained by multiplying the stated length times width. All dimensions are approximate and may vary with actual construction.



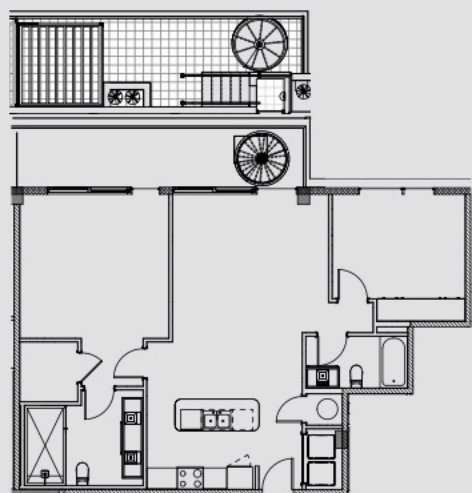
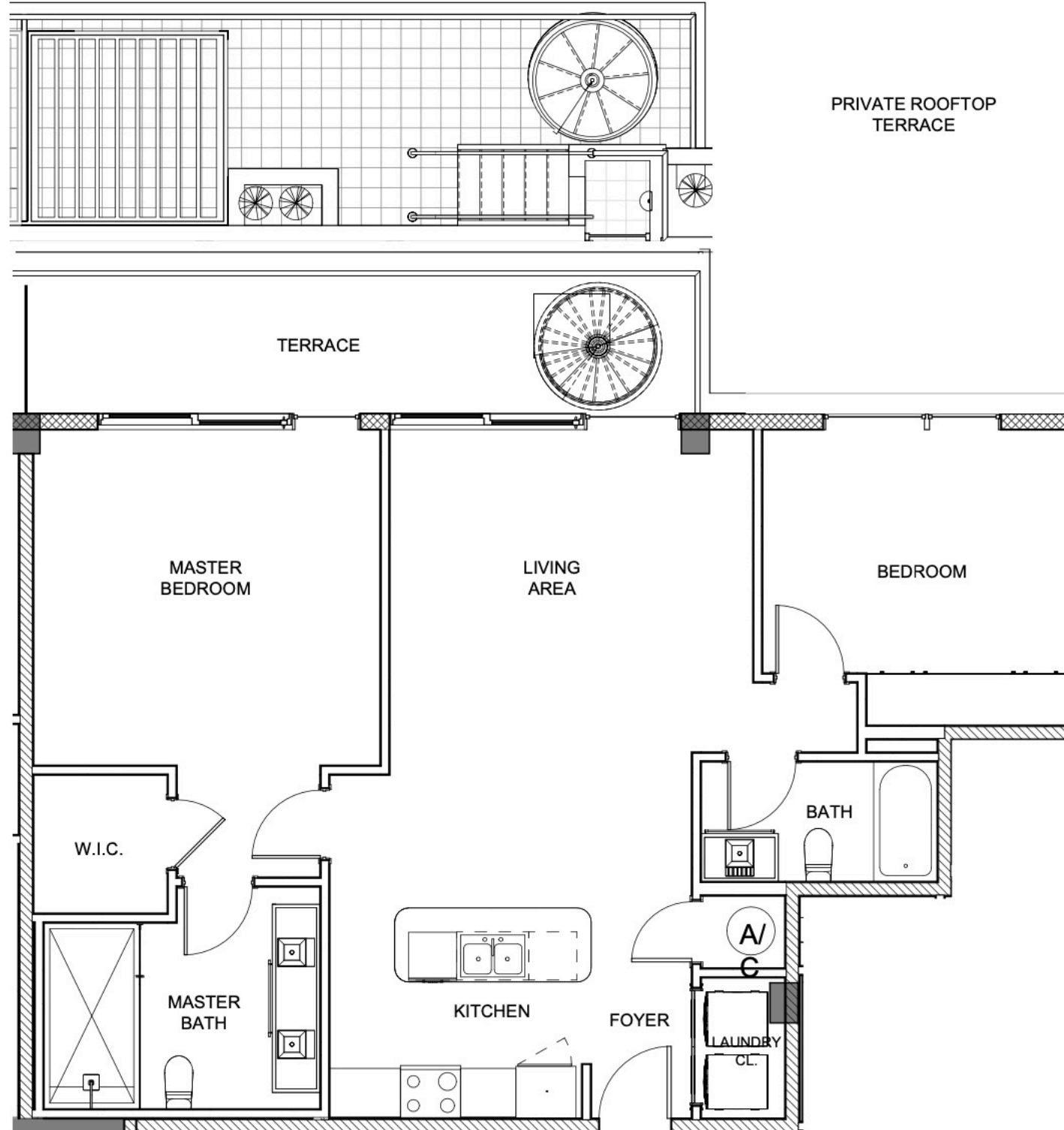


14  
WEST

## PENTHOUSE 03

2 BED / 2 BATH

FLOOR LOCATION : LEVEL 04  
 INDOOR LIVING : 1,145 FT<sup>2</sup> / 107 M<sup>2</sup>  
 OUTDOOR LIVING : 415 FT<sup>2</sup> / 39 M<sup>2</sup>  
 TOTAL LIVING : 1,561 FT<sup>2</sup> / 146 M<sup>2</sup>



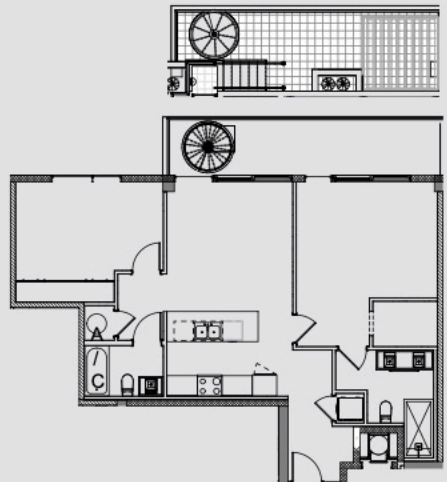
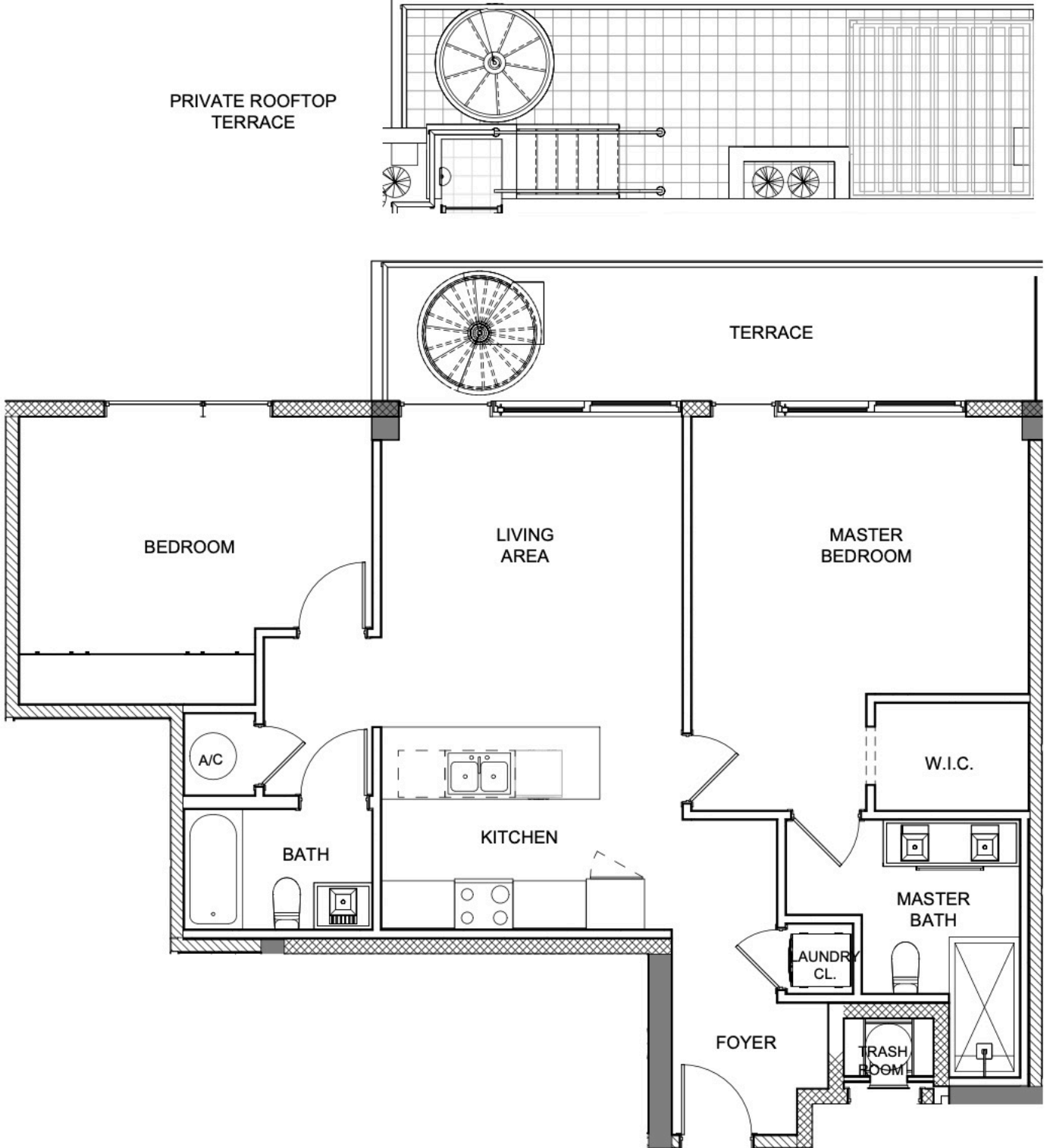
### 1414 WEST AVENUE, MIAMI BEACH FLORIDA

All depictions of matters of detail shown hereon, including, without limitation, items of finish, furniture and decoration, are conceptual only and are not necessarily included in the Unit. For a correct representation of the items included in the Unit, see the Purchase Agreement. Stated dimensions shown hereon are approximate and are measured to the interior face of interior walls. All square footage/square meter calculations are determined from exterior face of exterior walls and centerline of dimising walls. This method of measurement varies from, and is larger than, the dimensions that would be determined by using the description and definition of the "Unit" set forth in the Declaration (which generally includes the interior airspace between the perimeter walls and excludes interior structural components). Note that measurements of rooms set forth on this floor plan are generally taken at the greatest point of each given room (as if the room were a perfect rectangle), without regard for any cutouts. Accordingly, the area of the actual room will typically be smaller than the product obtained by multiplying the stated length times width. All dimensions are approximate and may vary with actual construction.

14  
WEST

# PENTHOUSE 02 2 BED / 2 BATH

FLOOR LEVEL : LEVEL 04  
 INDOOR LIVING : 1,055 FT2 / 98 M2  
 OUTDOOR LIVING : 423 FT2 / 40 M2  
 TOTAL LIVING : 1,478 FT2 / 138 M2



## 1414 WEST AVENUE, MIAMI BEACH FLORIDA

All depictions of matters of detail shown hereon, including, without limitation, items of finish, furniture and decoration, are conceptual only and are not necessarily included in the Unit. For a correct representation of the items included in the Unit, see the Purchase Agreement. Stated dimensions shown hereon are approximate and are measured to the interior face of interior walls. All square footage/square meter calculations are determined from exterior face of exterior walls and centerline of dimising walls. This method of measurement varies from, and is larger than, the dimensions that would be determined by using the description and definition of the "Unit" set forth in the Declaration (which generally includes the interior airspace between the perimeter walls and excludes interior structural components). Note that measurements of rooms set forth on this floor plan are generally taken at the greatest point of each given room (as if the room were a perfect rectangle), without regard for any cutouts. Accordingly, the area of the actual room will typically be smaller than the product obtained by multiplying the stated length times width. All dimensions are approximate and may vary with actual construction.

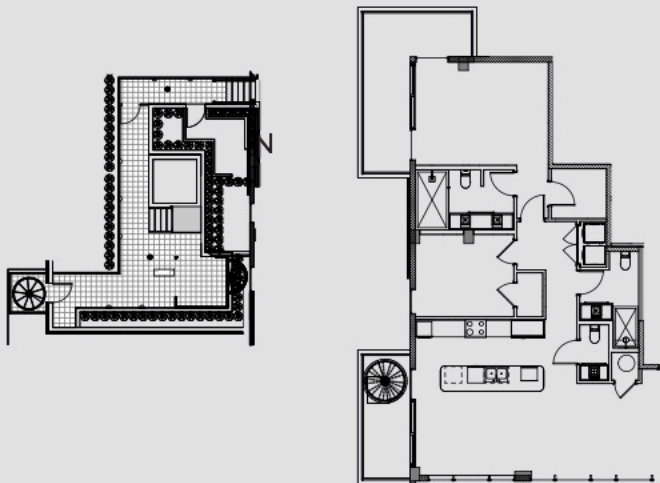
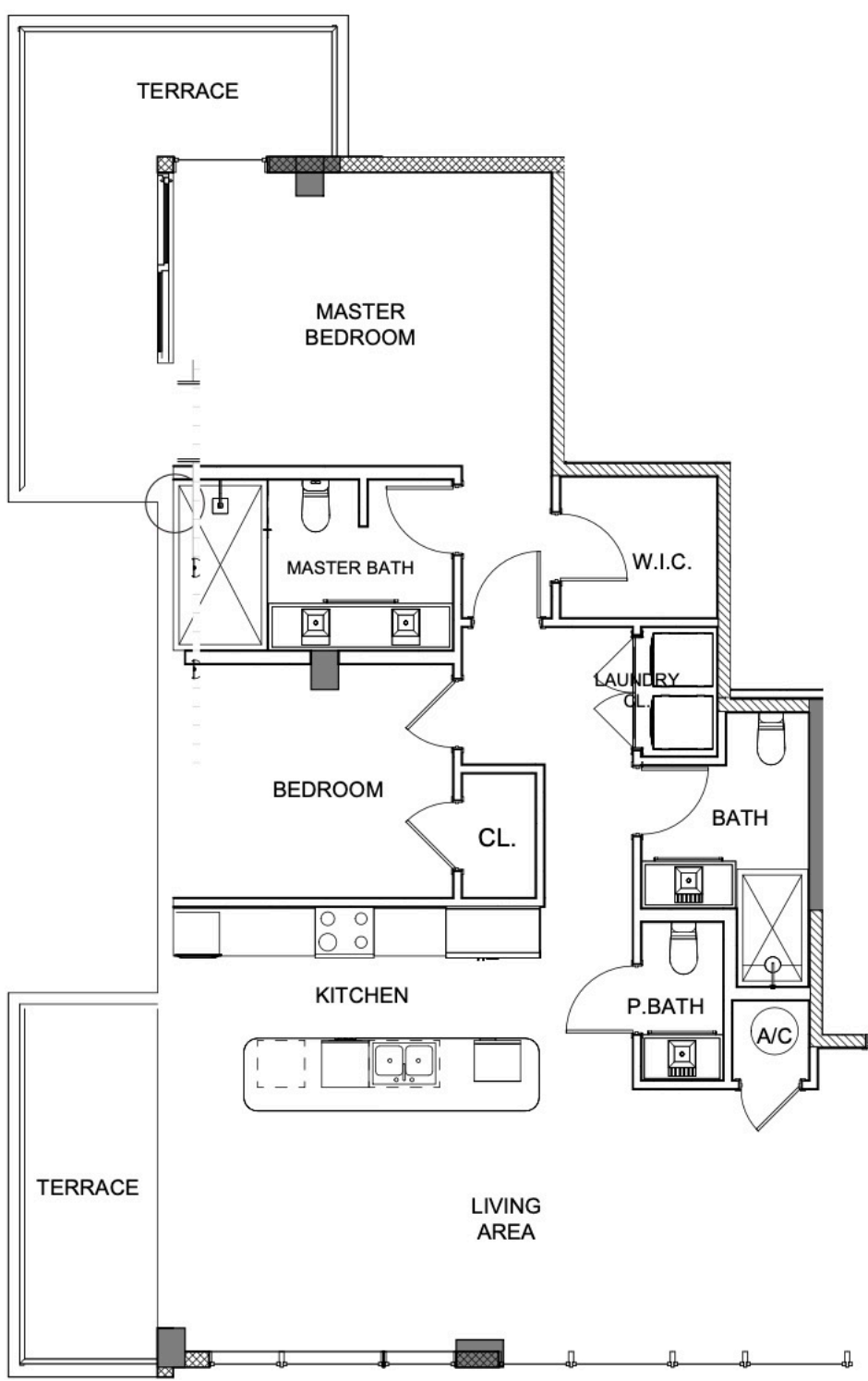
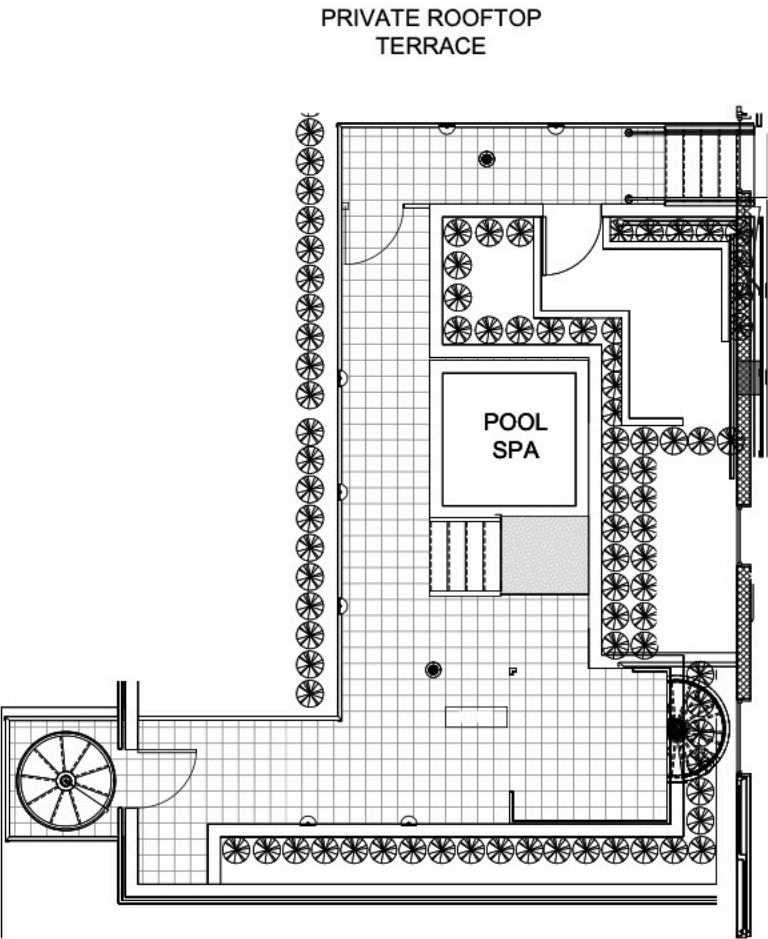


# 14 WEST

## PENTHOUSE 01

2 BED / 2 - 1/2 BATH

FLOOR LEVEL : LEVEL 04  
 INDOOR LIVING : 1,345 FT<sup>2</sup> / 125 M<sup>2</sup>  
 OUTDOOR LIVING : 805 FT<sup>2</sup> / 75 M<sup>2</sup>  
 TOTAL LIVING : 2,150 FT<sup>2</sup> / 200 M<sup>2</sup>



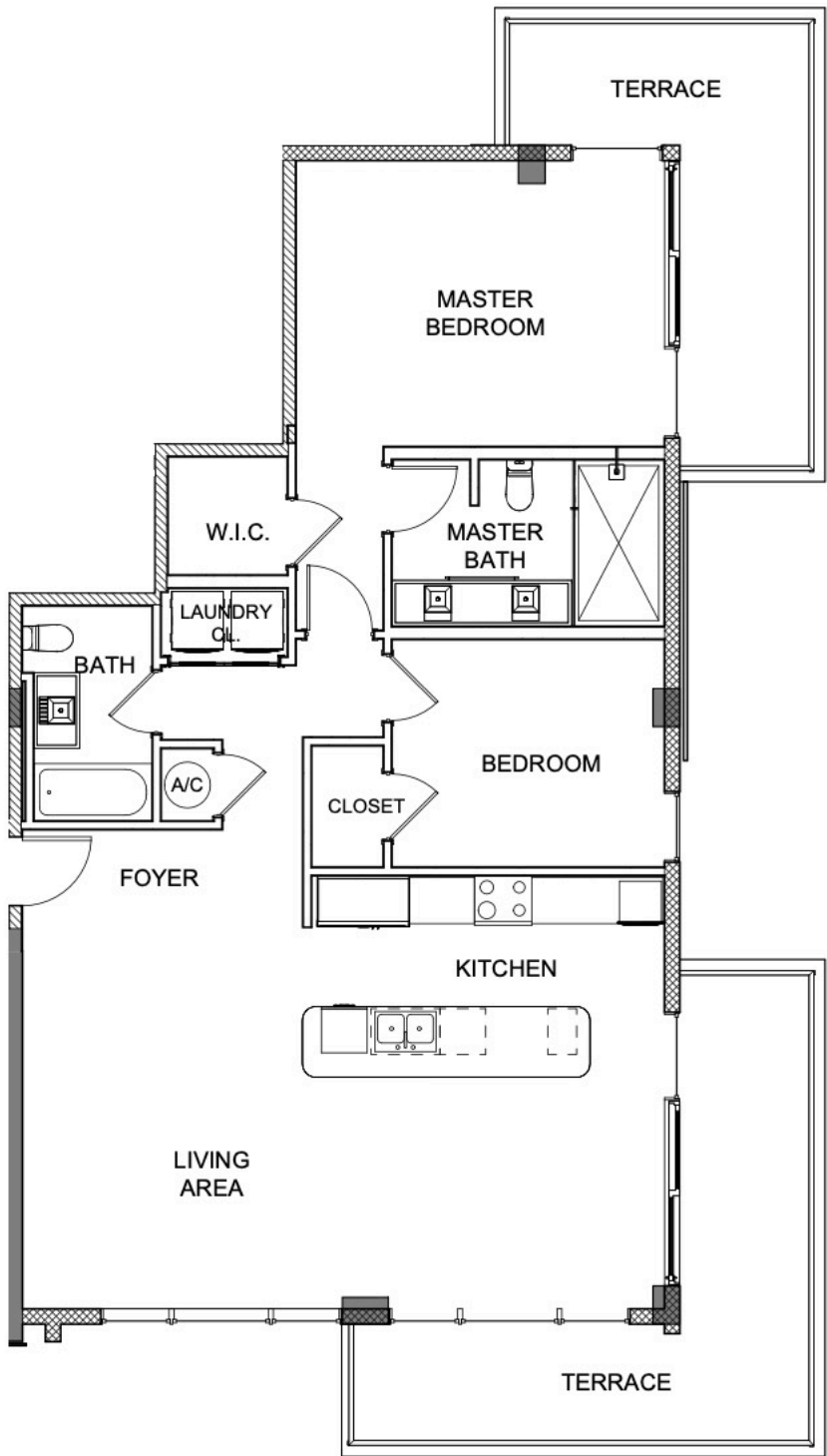
### 1414 WEST AVENUE, MIAMI BEACH FLORIDA

All depictions of matters of detail shown hereon, including, without limitation, items of finish, furniture and decoration, are conceptual only and are not necessarily included in the Unit. For a correct representation of the items included in the Unit, see the Purchase Agreement. Stated dimensions shown hereon are approximate and are measured to the interior face of interior walls. All square footage/square meter calculations are determined from exterior face of exterior walls and centerline of dimising walls. This method of measurement varies from, and is larger than, the dimensions that would be determined by using the description and definition of the "Unit" set forth in the Declaration (which generally includes the interior airspace between the perimeter walls and excludes interior structural components). Note that measurements of rooms set forth on this floor plan are generally taken at the greatest point of each given room (as if the room were a perfect rectangle), without regard for any cutouts. Accordingly, the area of the actual room will typically be smaller than the product obtained by multiplying the stated length times width. All dimensions are approximate and may vary with actual construction.

## RESIDENCE 304

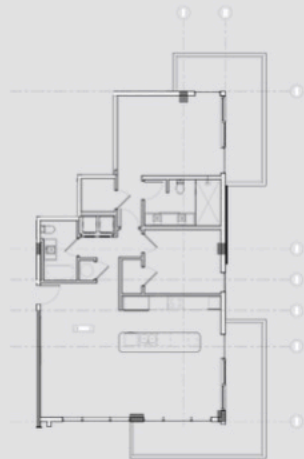
2 BED / 2 BATH

FLOOR LEVEL :	LEVEL 03
INDOOR LIVING :	1,293 FT2 / 120 M2
OUTDOOR LIVING :	282 FT2 / 26 M2
TOTAL LIVING :	1,627 FT2 / 146 M2



### 1414 WEST AVENUE, MIAMI BEACH FLORIDA

All depictions of matters of detail shown hereon, including, without limitation, items of finish, furniture and decoration, are conceptual only and are not necessarily included in the Unit. For a correct representation of the items included in the Unit, see the Purchase Agreement. Stated dimensions shown hereon are approximate and are measured to the interior face of interior walls. All square footage/square meter calculations are determined from exterior face of exterior walls and centerline of dimising walls. This method of measurement varies from, and is larger than, the dimensions that would be determined by using the description and definition of the "Unit" set forth in the Declaration (which generally includes the interior airspace between the perimeter walls and excludes interior structural components). Note that measurements of rooms set forth on this floor plan are generally taken at the greatest point of each given room (as if the room were a perfect rectangle), without regard for any cutouts. Accordingly, the area of the actual room will typically be smaller than the product obtained by multiplying the stated length times width. All dimensions are approximate and may vary with actual construction.

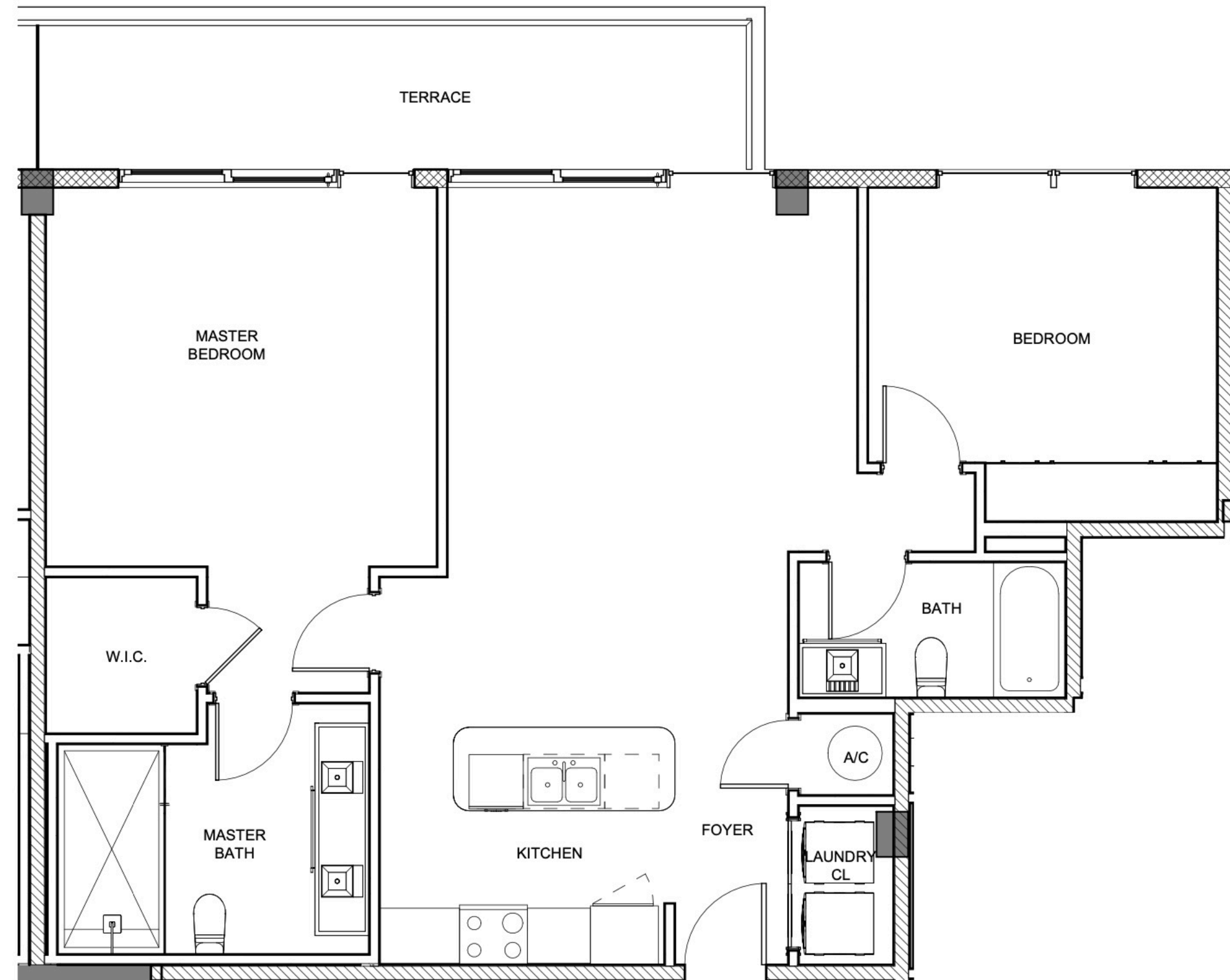




## RESIDENCE • 03

2 BED / 2 BATH

FLOOR LEVEL : LEVEL 0 •  
 INDOOR LIVING : 1,146 FT<sup>2</sup> / 107 M<sup>2</sup>  
 OUTDOOR LIVING : •• FT<sup>2</sup> / • M<sup>2</sup>  
 TOTAL LIVING : ••207 FT<sup>2</sup> / 127 M<sup>2</sup>



### 1414 WEST AVENUE, MIAMI BEACH FLORIDA

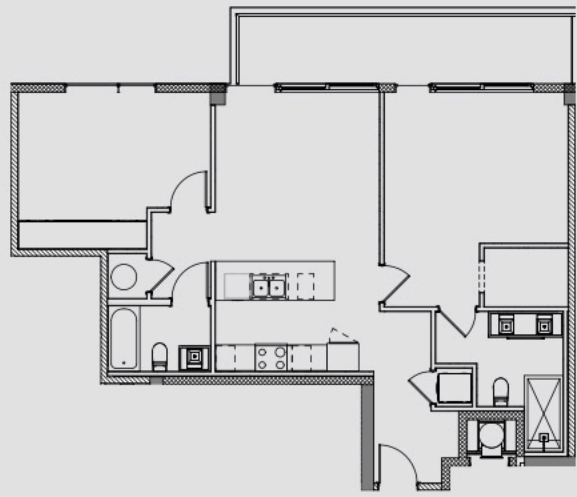
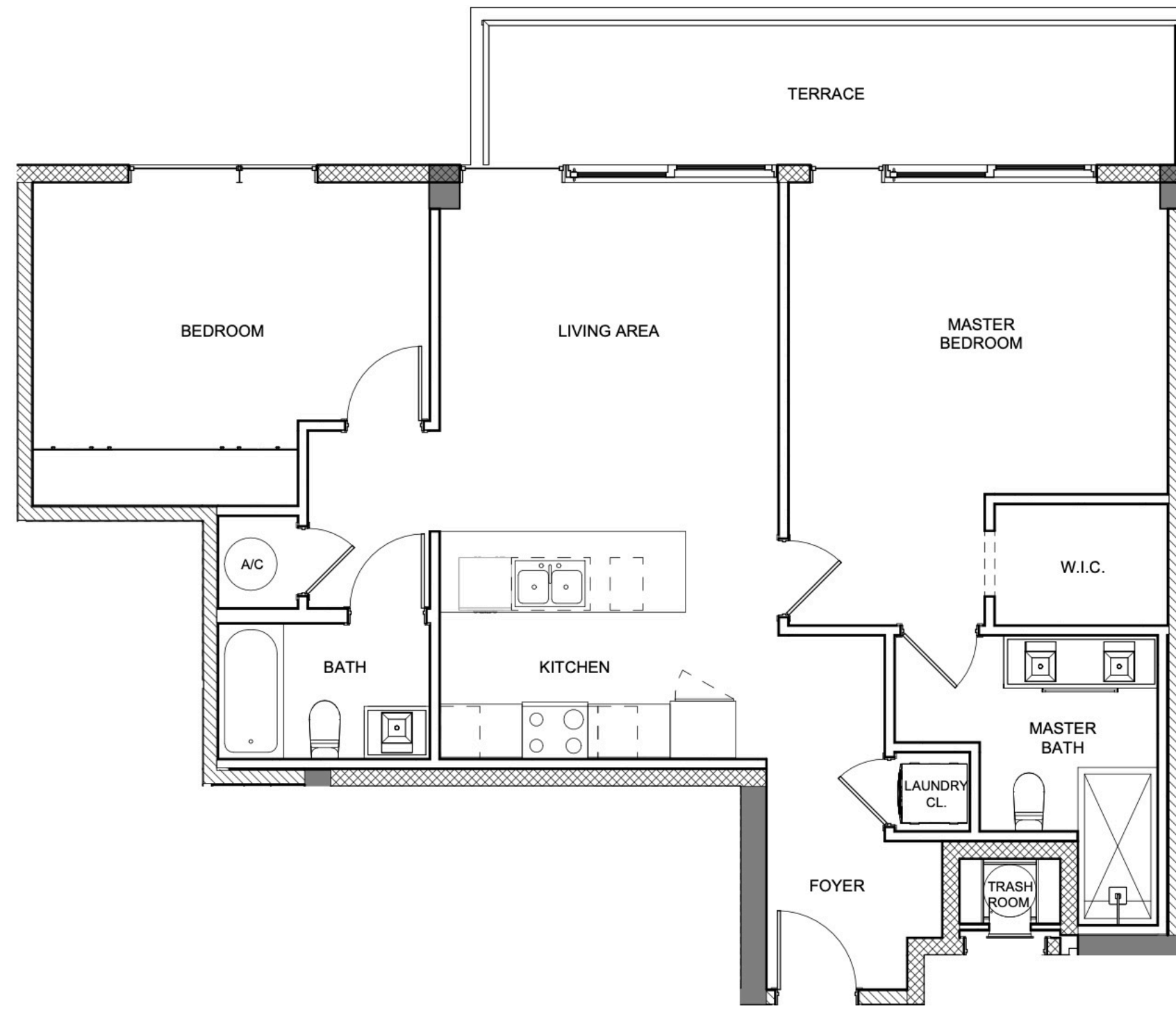
All depictions of matters of detail shown hereon, including, without limitation, items of finish, furniture and decoration, are conceptual only and are not necessarily included in the Unit. For a correct representation of the items included in the Unit, see the Purchase Agreement. Stated dimensions shown hereon are approximate and are measured to the interior face of interior walls. All square footage/square meter calculations are determined from exterior face of exterior walls and centerline of dimising walls. This method of measurement varies from, and is larger than, the dimensions that would be determined by using the description and definition of the "Unit" set forth in the Declaration (which generally includes the interior airspace between the perimeter walls and excludes interior structural components). Note that measurements of rooms set forth on this floor plan are generally taken at the greatest point of each given room (as if the room were a perfect rectangle), without regard for any cutouts. Accordingly, the area of the actual room will typically be smaller than the product obtained by multiplying the stated length times width. All dimensions are approximate and may vary with actual construction.

14  
WEST

## RESIDENCE 302

2 BED / 2 BATH

FLOOR LEVEL : LEVEL 03  
 INDOOR LIVING : 1,055 FT<sup>2</sup> / 98 M<sup>2</sup>  
 OUTDOOR LIVING : 161 FT<sup>2</sup> / 15 M<sup>2</sup>  
 TOTAL LIVING : 1,216 FT<sup>2</sup> / 113 M<sup>2</sup>



### 1414 WEST AVENUE, MIAMI BEACH FLORIDA

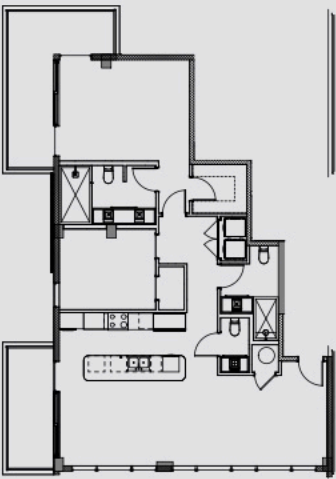
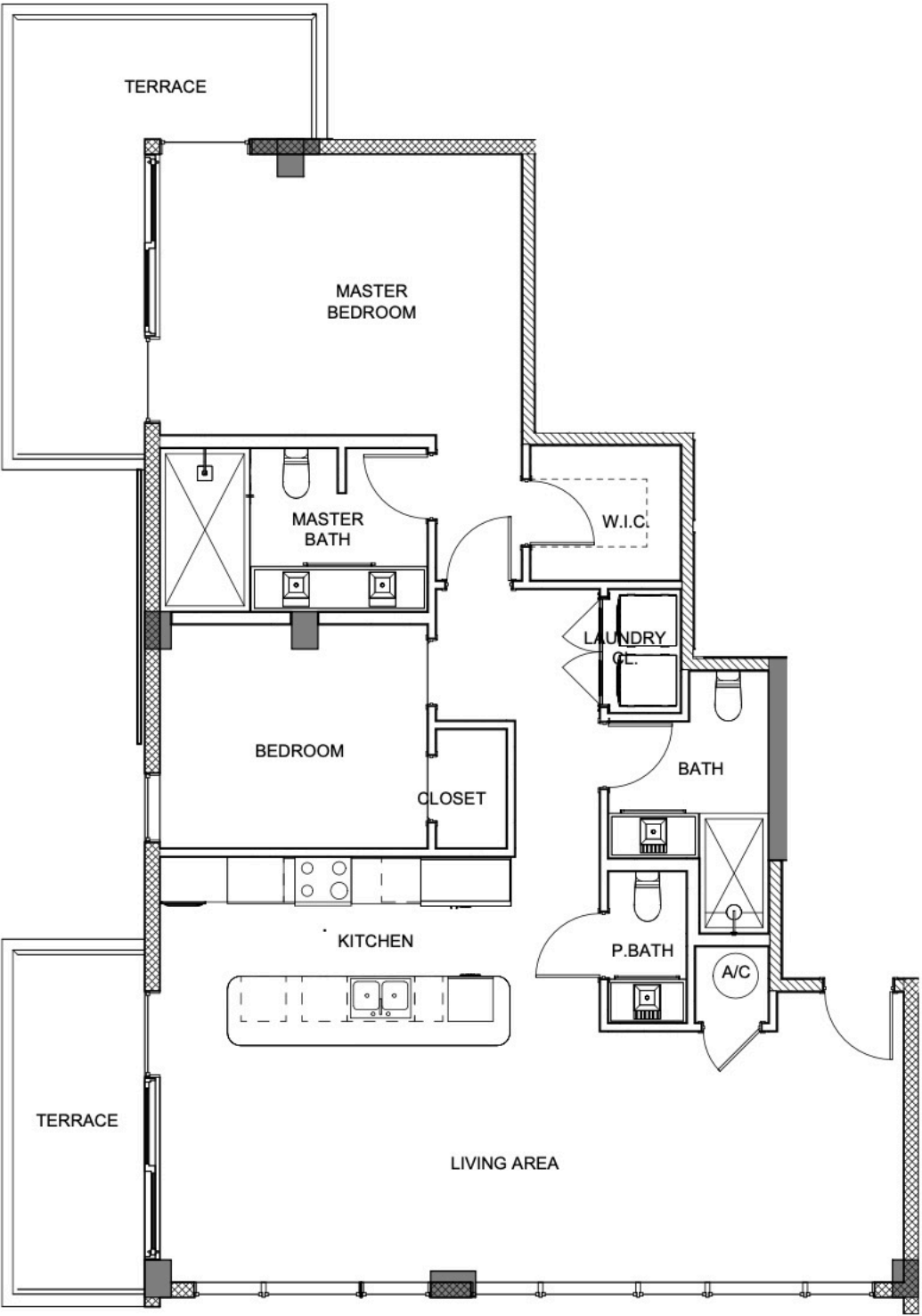
All depictions of matters of detail shown hereon, including, without limitation, items of finish, furniture and decoration, are conceptual only and are not necessarily included in the Unit. For a correct representation of the items included in the Unit, see the Purchase Agreement. Stated dimensions shown hereon are approximate and are measured to the interior face of interior walls. All square footage/square meter calculations are determined from exterior face of exterior walls and centerline of dimising walls. This method of measurement varies from, and is larger than, the dimensions that would be determined by using the description and definition of the "Unit" set forth in the Declaration (which generally includes the interior airspace between the perimeter walls and excludes interior structural components). Note that measurements of rooms set forth on this floor plan are generally taken at the greatest point of each given room (as if the room were a perfect rectangle), without regard for any cutouts. Accordingly, the area of the actual room will typically be smaller than the product obtained by multiplying the stated length times width. All dimensions are approximate and may vary with actual construction.



## RESIDENCE 301

2 BED / 2 1/2 BATH

FLOOR LEVEL : LEVEL 03  
 INDOOR LIVING : 1,345 FT<sup>2</sup> / 125 M<sup>2</sup>  
 OUTDOOR LIVING : 282 FT<sup>2</sup> / 26 M<sup>2</sup>  
 TOTAL LIVING : 1,627 FT<sup>2</sup> / 151 M<sup>2</sup>



### 1414 WEST AVENUE, MIAMI BEACH FLORIDA

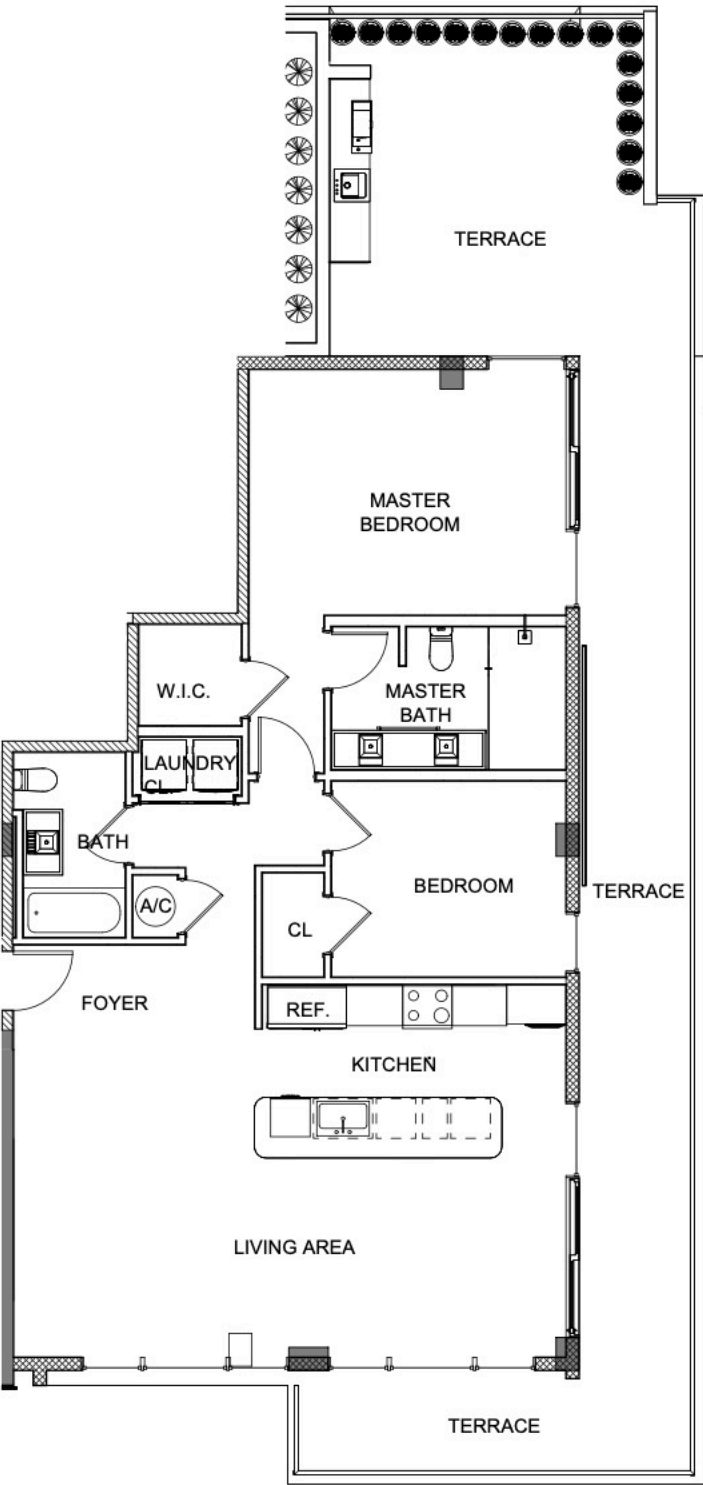
All depictions of matters of detail shown hereon, including, without limitation, items of finish, furniture and decoration, are conceptual only and are not necessarily included in the Unit. For a correct representation of the items included in the Unit, see the Purchase Agreement. Stated dimensions shown hereon are approximate and are measured to the interior face of interior walls. All square footage/square meter calculations are determined from exterior face of exterior walls and centerline of dimising walls. This method of measurement varies from, and is larger than, the dimensions that would be determined by using the description and definition of the "Unit" set forth in the Declaration (which generally includes the interior airspace between the perimeter walls and excludes interior structural components). Note that measurements of rooms set forth on this floor plan are generally taken at the greatest point of each given room (as if the room were a perfect rectangle), without regard for any cutouts. Accordingly, the area of the actual room will typically be smaller than the product obtained by multiplying the stated length times width. All dimensions are approximate and may vary with actual construction.

# 14 WEST

## RESIDENCE 204

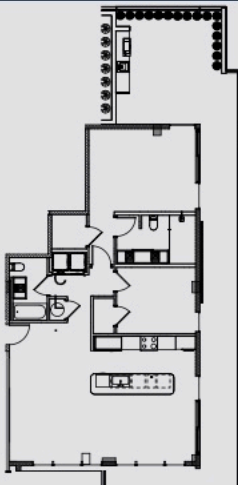
2 BED / 2 BATH

FLOOR LEVEL : LEVEL 02  
 INDOOR LIVING : 1,293 FT2 / 120 M2  
 OUTDOOR LIVING : 772 FT2 / 72 M2  
 TOTAL LIVING : 2,065 FT2 / 192 M2



### 1414 WEST AVENUE, MIAMI BEACH FLORIDA

All depictions of matters of detail shown hereon, including, without limitation, items of finish, furniture and decoration, are conceptual only and are not necessarily included in the Unit. For a correct representation of the items included in the Unit, see the Purchase Agreement. Stated dimensions shown hereon are approximate and are measured to the interior face of interior walls. All square footage/square meter calculations are determined from exterior face of exterior walls and centerline of dimising walls. This method of measurement varies from, and is larger than, the dimensions that would be determined by using the description and definition of the "Unit" set forth in the Declaration (which generally includes the interior airspace between the perimeter walls and excludes interior structural components). Note that measurements of rooms set forth on this floor plan are generally taken at the greatest point of each given room (as if the room were a perfect rectangle), without regard for any cutouts. Accordingly, the area of the actual room will typically be smaller than the product obtained by multiplying the stated length times width. All dimensions are approximate and may vary with actual construction.



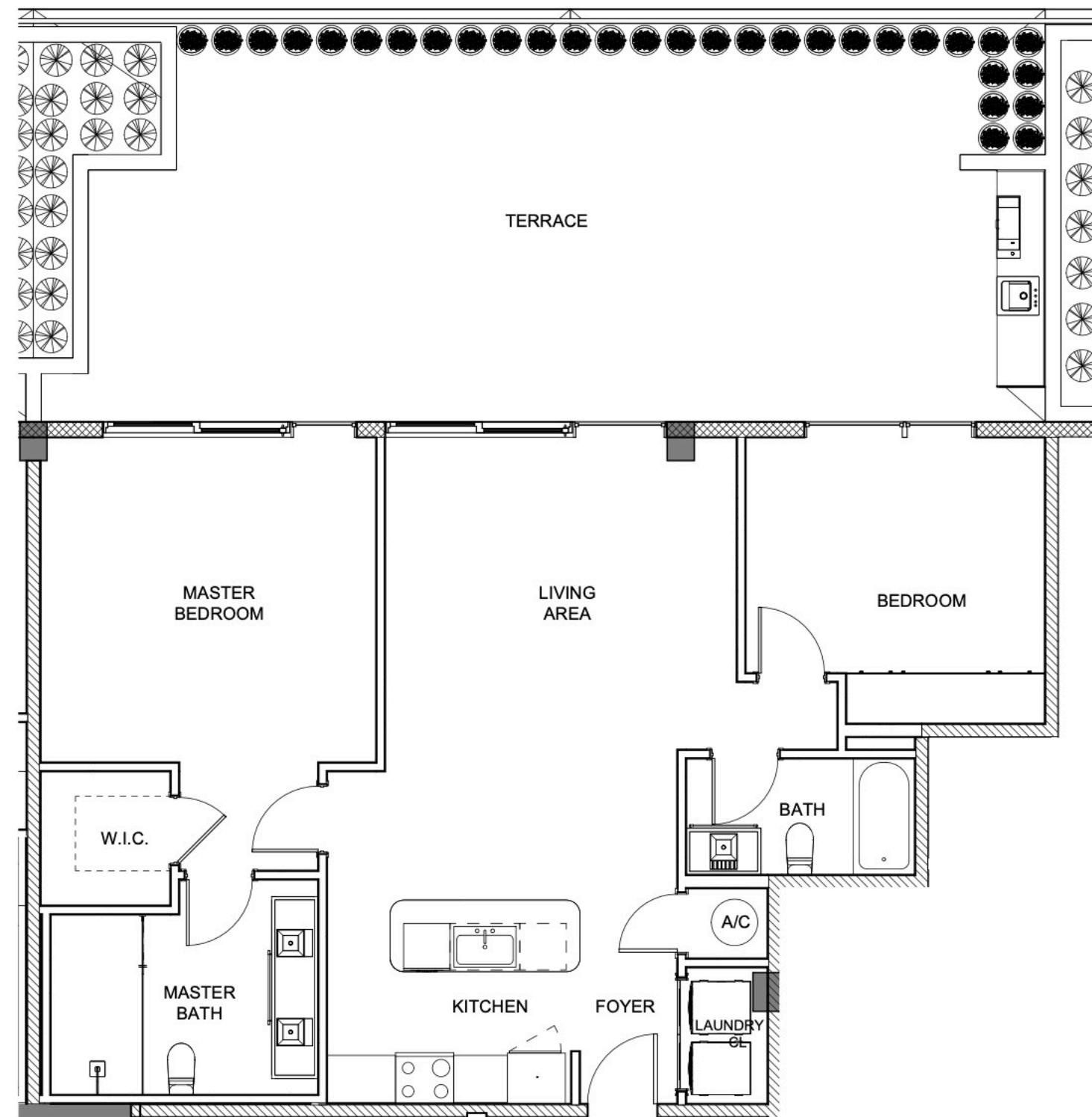
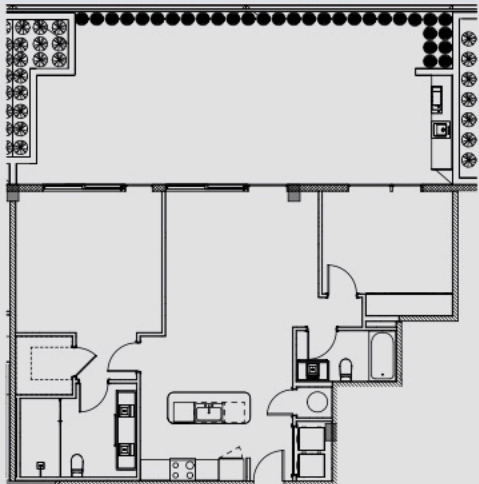


14  
WEST

## RESIDENCE 203

2 BED / 2 BATH

FLOOR LEVEL : LEVEL 02  
INDOOR LIVING : 1,146 FT<sup>2</sup> / 107 M<sup>2</sup>  
OUTDOOR LIVING : 709 FT<sup>2</sup> / 66 M<sup>2</sup>  
TOTAL LIVING : 1,885 FT<sup>2</sup> / 173 M<sup>2</sup>



### 1414 WEST AVENUE, MIAMI BEACH FLORIDA

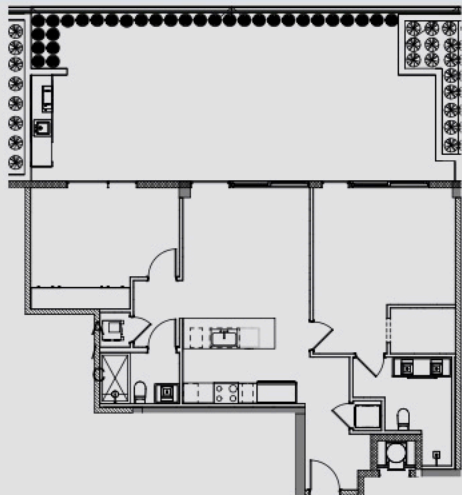
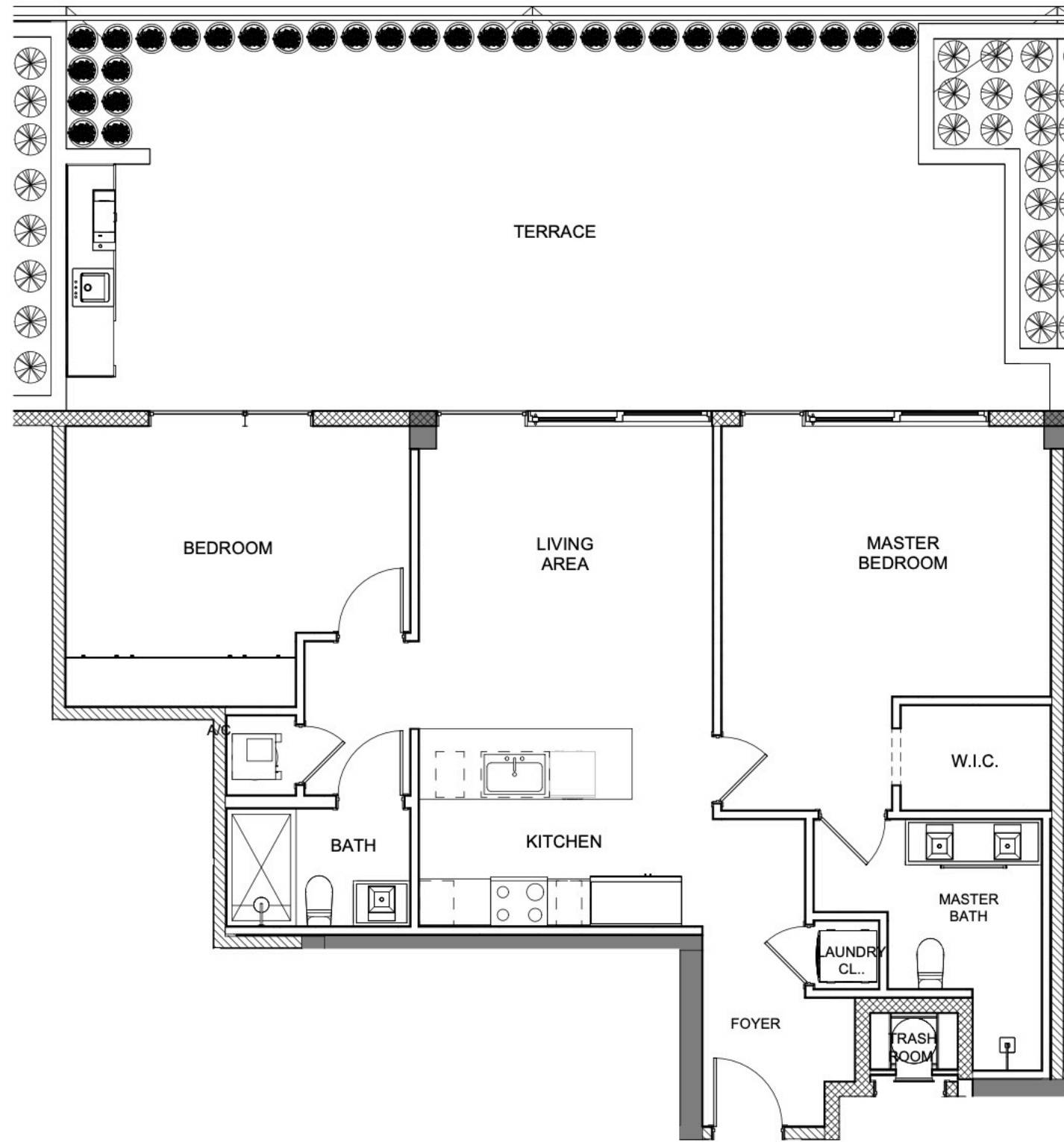
All depictions of matters of detail shown hereon, including, without limitation, items of finish, furniture and decoration, are conceptual only and are not necessarily included in the Unit. For a correct representation of the items included in the Unit, see the Purchase Agreement. Stated dimensions shown hereon are approximate and are measured to the interior face of interior walls. All square footage/square meter calculations are determined from exterior face of exterior walls and centerline of dimising walls. This method of measurement varies from, and is larger than, the dimensions that would be determined by using the description and definition of the "Unit" set forth in the Declaration (which generally includes the interior airspace between the perimeter walls and excludes interior structural components). Note that measurements of rooms set forth on this floor plan are generally taken at the greatest point of each given room (as if the room were a perfect rectangle), without regard for any cutouts. Accordingly, the area of the actual room will typically be smaller than the product obtained by multiplying the stated length times width. All dimensions are approximate and may vary with actual construction.

14  
WEST

# RESIDENCE 202

2 BED / 2 BATH

FLOOR LEVEL : LEVEL 02  
 INDOOR LIVING : 1,055 FT2 / 98 M2  
 OUTDOOR LIVING : 709 FT2 / 66 M2  
 TOTAL LIVING : 1,764 FT2 / 164 M2



## 1414 WEST AVENUE, MIAMI BEACH FLORIDA

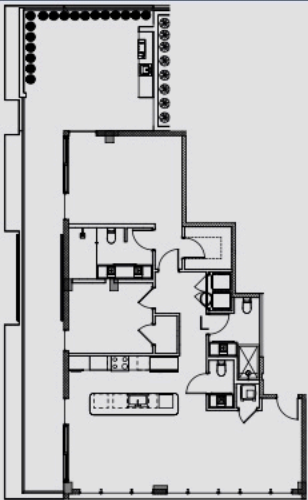
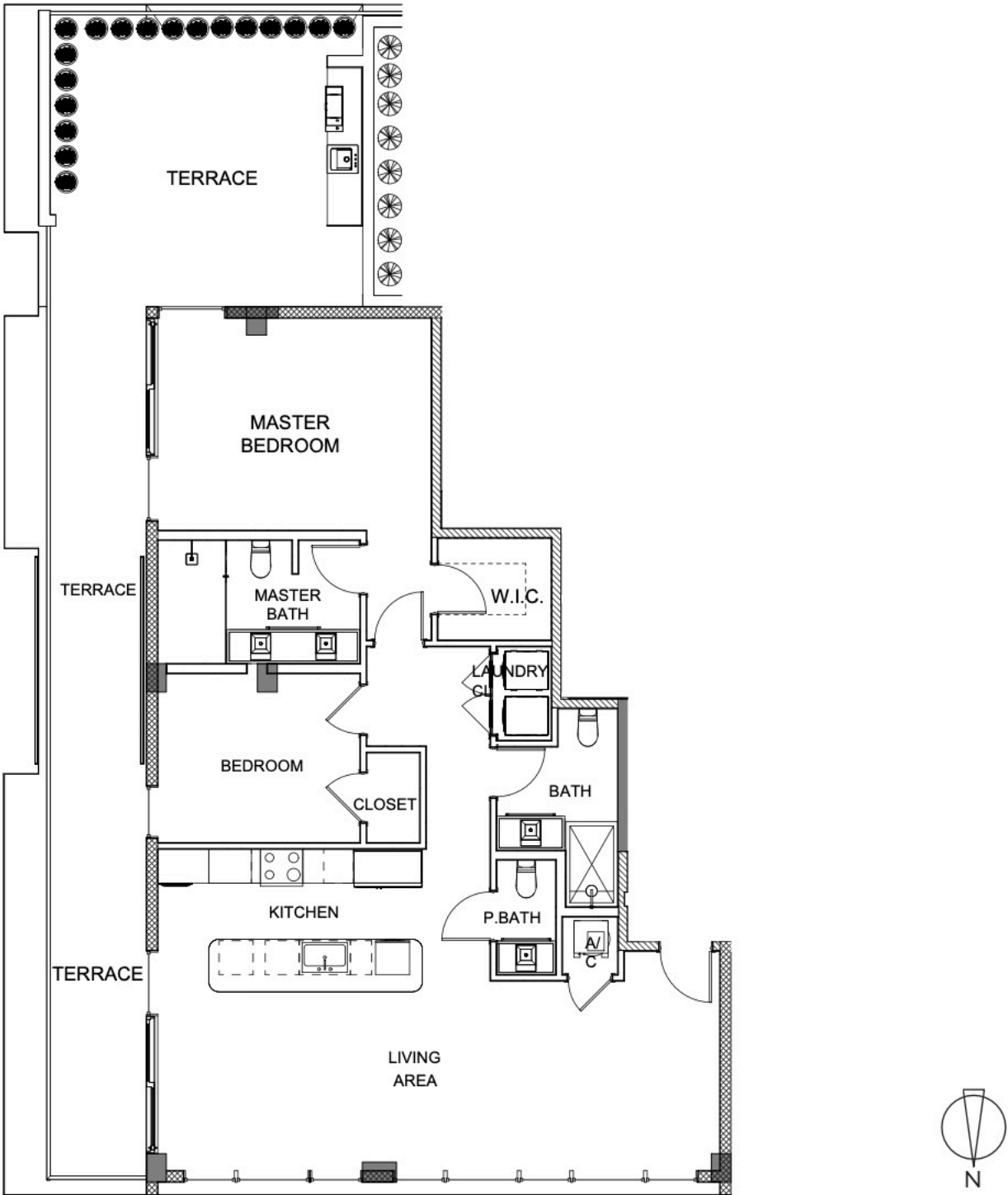
All depictions of matters of detail shown hereon, including, without limitation, items of finish, furniture and decoration, are conceptual only and are not necessarily included in the Unit. For a correct representation of the items included in the Unit, see the Purchase Agreement. Stated dimensions shown hereon are approximate and are measured to the interior face of interior walls. All square footage/square meter calculations are determined from exterior face of exterior walls and centerline of dimising walls. This method of measurement varies from, and is larger than, the dimensions that would be determined by using the description and definition of the "Unit" set forth in the Declaration (which generally includes the interior airspace between the perimeter walls and excludes interior structural components). Note that measurements of rooms set forth on this floor plan are generally taken at the greatest point of each given room (as if the room were a perfect rectangle), without regard for any cutouts. Accordingly, the area of the actual room will typically be smaller than the product obtained by multiplying the stated length times width. All dimensions are approximate and may vary with actual construction.



## RESIDENCE 201

2 BED / 2 - 1/2 BATH

FLOOR LEVEL :	LEVEL 02
INDOOR LIVING :	1,345 FT2 / 125 M2
OUTDOOR LIVING :	772 FT2 / 72 M2
TOTAL LIVING :	2,117 FT2 / 197 M2



### 1414 WEST AVENUE, MIAMI BEACH FLORIDA

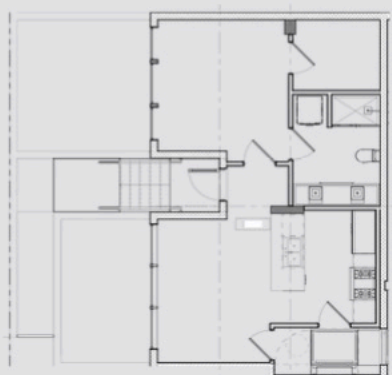
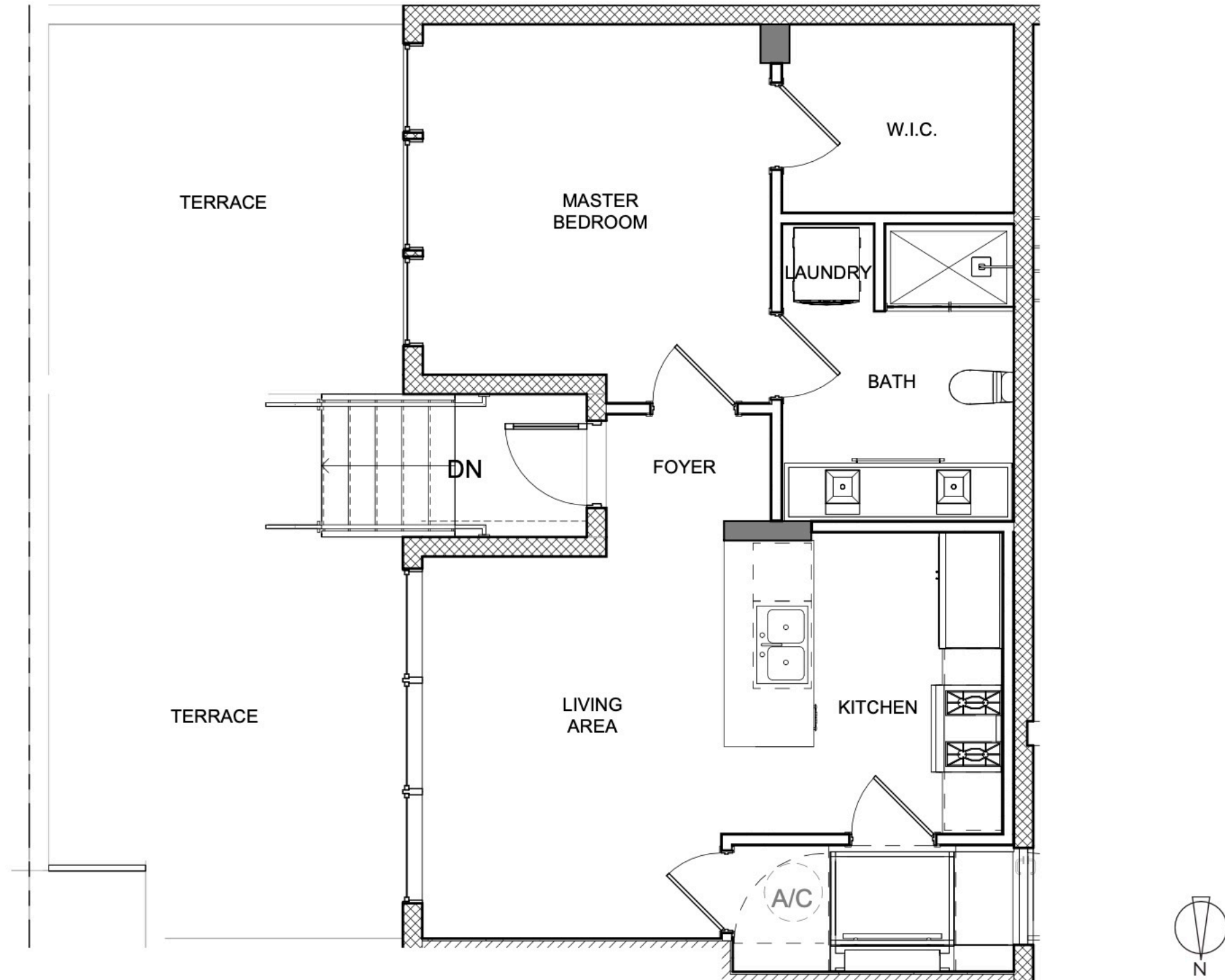
All depictions of matters of detail shown hereon, including, without limitation, items of finish, furniture and decoration, are conceptual only and are not necessarily included in the Unit. For a correct representation of the items included in the Unit, see the Purchase Agreement. Stated dimensions shown hereon are approximate and are measured to the interior face of interior walls. All square footage/square meter calculations are determined from exterior face of exterior walls and centerline of dimising walls. This method of measurement varies from, and is larger than, the dimensions that would be determined by using the description and definition of the "Unit" set forth in the Declaration (which generally includes the interior airspace between the perimeter walls and excludes interior structural components). Note that measurements of rooms set forth on this floor plan are generally taken at the greatest point of each given room (as if the room were a perfect rectangle), without regard for any cutouts. Accordingly, the area of the actual room will typically be smaller than the product obtained by multiplying the stated length times width. All dimensions are approximate and may vary with actual construction.

# 14 WEST

## GARDEN RESIDENCE 102

1 BED / 1 BATH

FLOOR LEVEL : LEVEL 01  
 INDOOR LIVING : 889 FT2 / 86 M2  
 OUTDOOR LIVING : 392 FT2 / 36 M2  
 TOTAL LIVING: 1,264 FT2 / 122 M2



### 1414 WEST AVENUE, MIAMI BEACH FLORIDA

All depictions of matters of detail shown hereon, including, without limitation, items of finish, furniture and decoration, are conceptual only and are not necessarily included in the Unit. For a correct representation of the items included in the Unit, see the Purchase Agreement. Stated dimensions shown hereon are approximate and are measured to the interior face of interior walls. All square footage/square meter calculations are determined from exterior face of exterior walls and centerline of dimising walls. This method of measurement varies from, and is larger than, the dimensions that would be determined by using the description and definition of the "Unit" set forth in the Declaration (which generally includes the interior airspace between the perimeter walls and excludes interior structural components). Note that measurements of rooms set forth on this floor plan are generally taken at the greatest point of each given room (as if the room were a perfect rectangle), without regard for any cutouts. Accordingly, the area of the actual room will typically be smaller than the product obtained by multiplying the stated length times width. All dimensions are approximate and may vary with actual construction.