

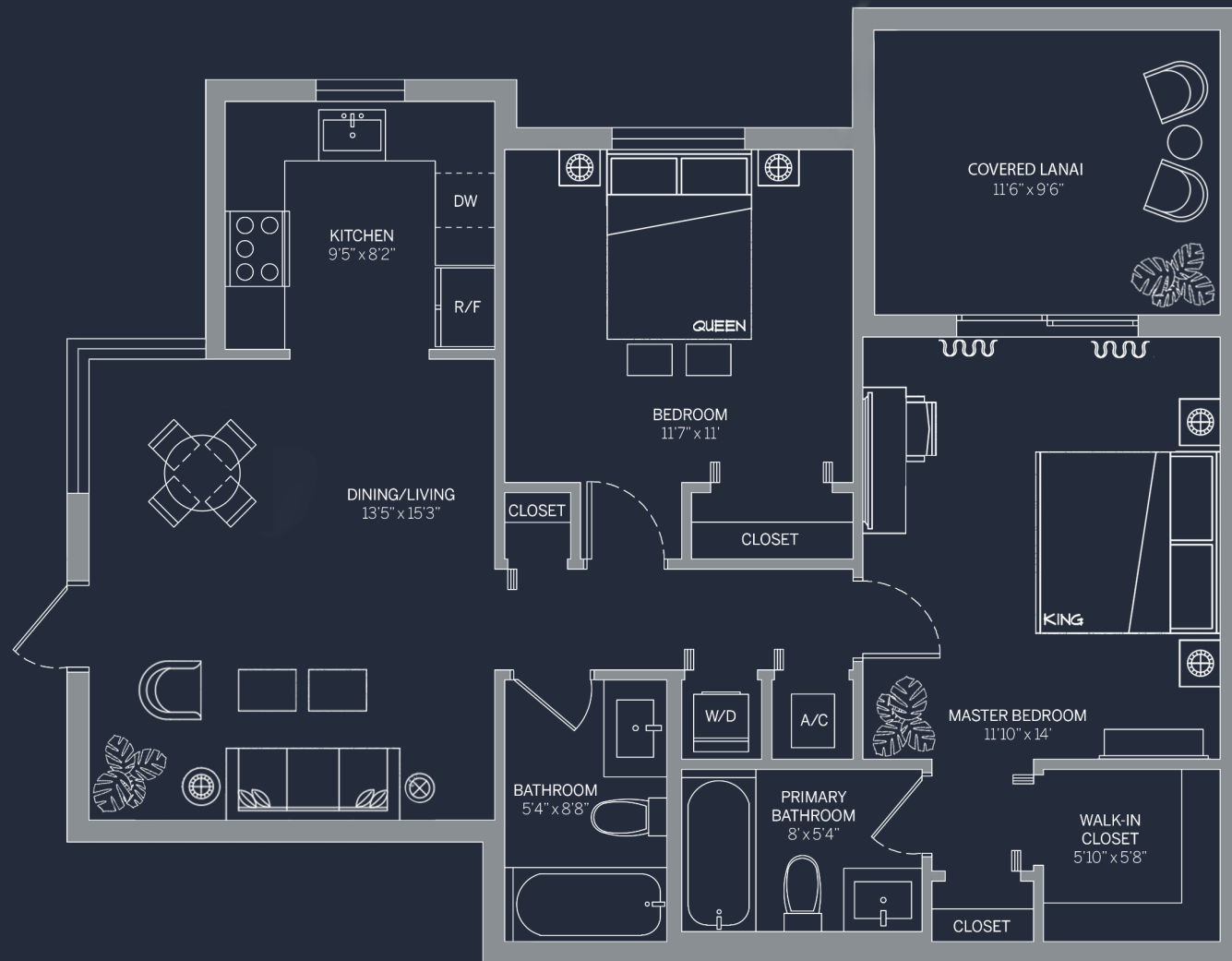


ATLANTICA

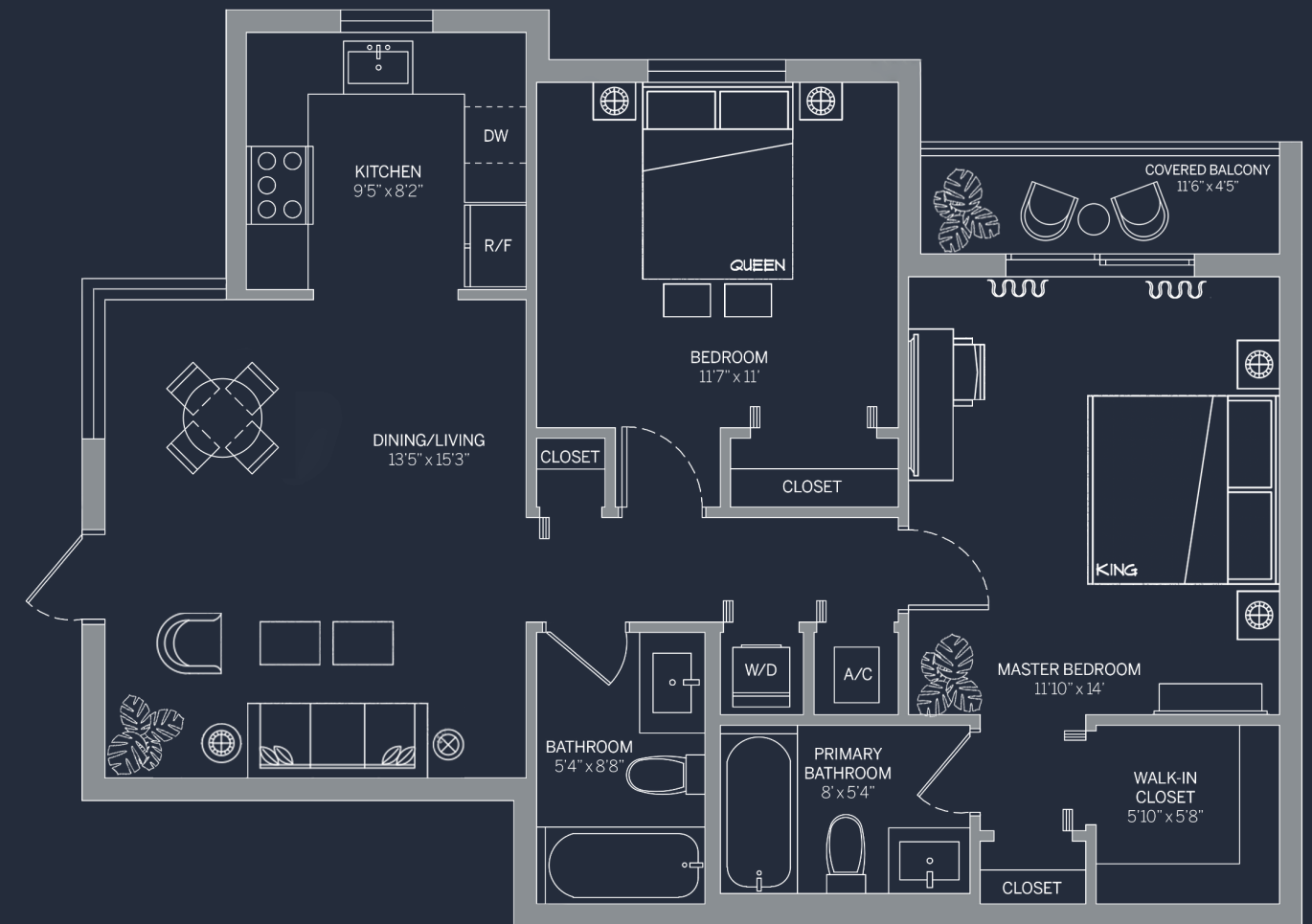
AT DANIA BEACH

A | FLOOR PLAN (2BD / 2BTH)

902sq.ft.* | 84m²



GROUND FLOOR



SECOND FLOOR

ATLANTICA AT DANIA BEACH

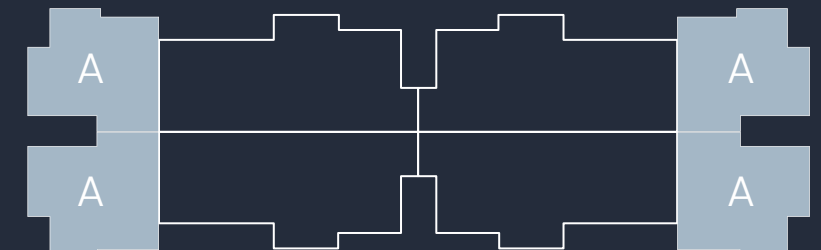


Floorplan A can also appear reversed as this diagram depicts Square footage is approximate, drawings are for representation only, are not drawn to any particular scale, and are subject to change without notice. Please refer back to a later version for more accurate square footage or contact the sales team for more up to date information.

Any renderings and depictions are conceptual only and are for the convenience of reference. They should not be relied upon as representations, express or implied, of the final detail of the Units nor the views from any of the Units.

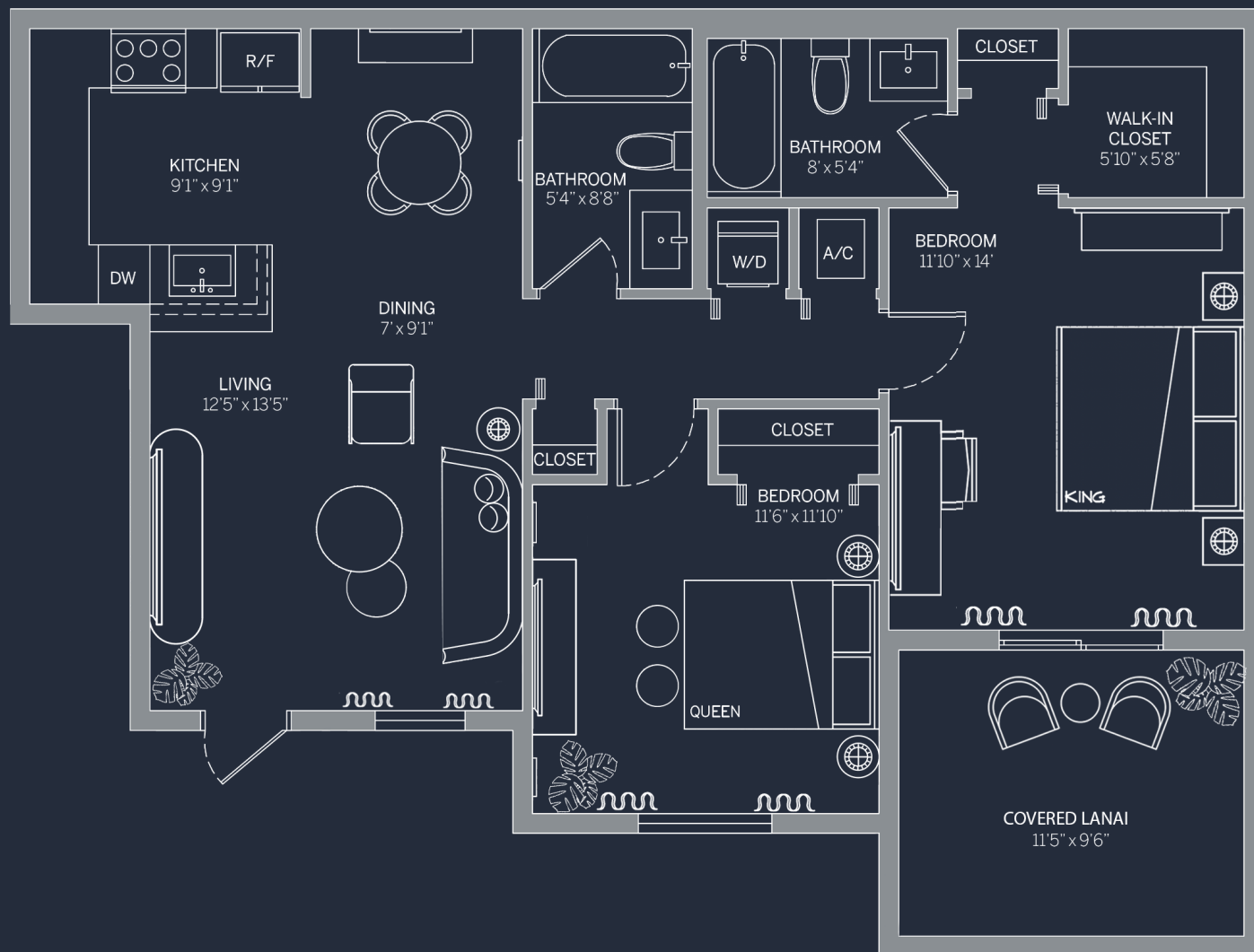
ORAL REPRESENTATIONS CANNOT BE RELIED UPON AS CORRECTLY STATING REPRESENTATIONS OF THE DEVELOPER. FOR CORRECT REPRESENTATIONS, MAKE REFERENCE TO THE DOCUMENTS REQUIRED BY 718.503, FLORIDA STATUTES, TO BE FURNISHED BY A DEVELOPER TO A BUYER OR LESSEE.

BUILDING 618 & 622

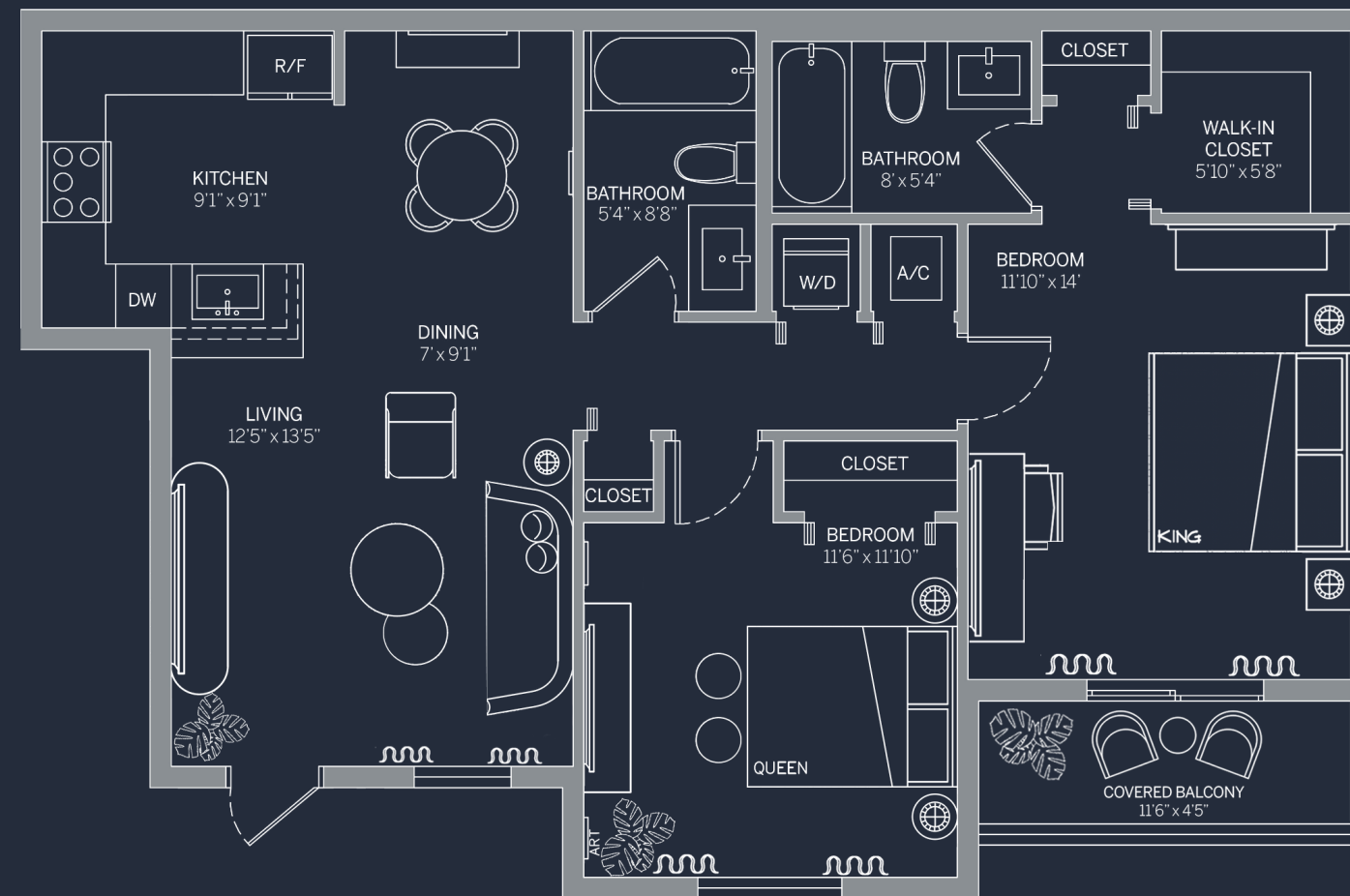


B | FLOOR PLAN (2BD / 2BTH)

940sq.ft.* | 87m²



GROUND FLOOR



SECOND & THIRD FLOORS

ATLANTICA

AT DANIA BEACH

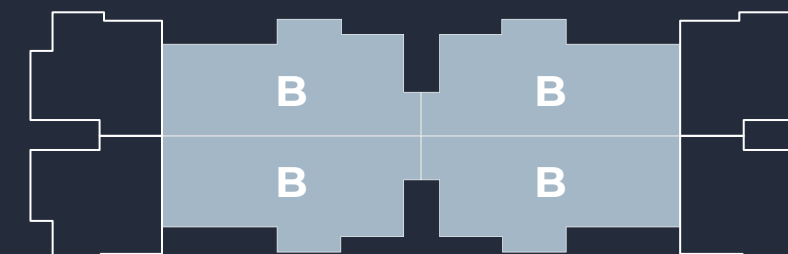


Floorplan B can also appear reversed as this diagram depicts Square footage is approximate, drawings are for representation only, are not drawn to any particular scale, and are subject to change without notice. Please refer back to a later version for more accurate square footage or contact the sales team for more up to date information.

Any renderings and depictions are conceptual only and are for the convenience of reference. They should not be relied upon as representations, express or implied, of the final detail of the Units nor the views from any of the Units.

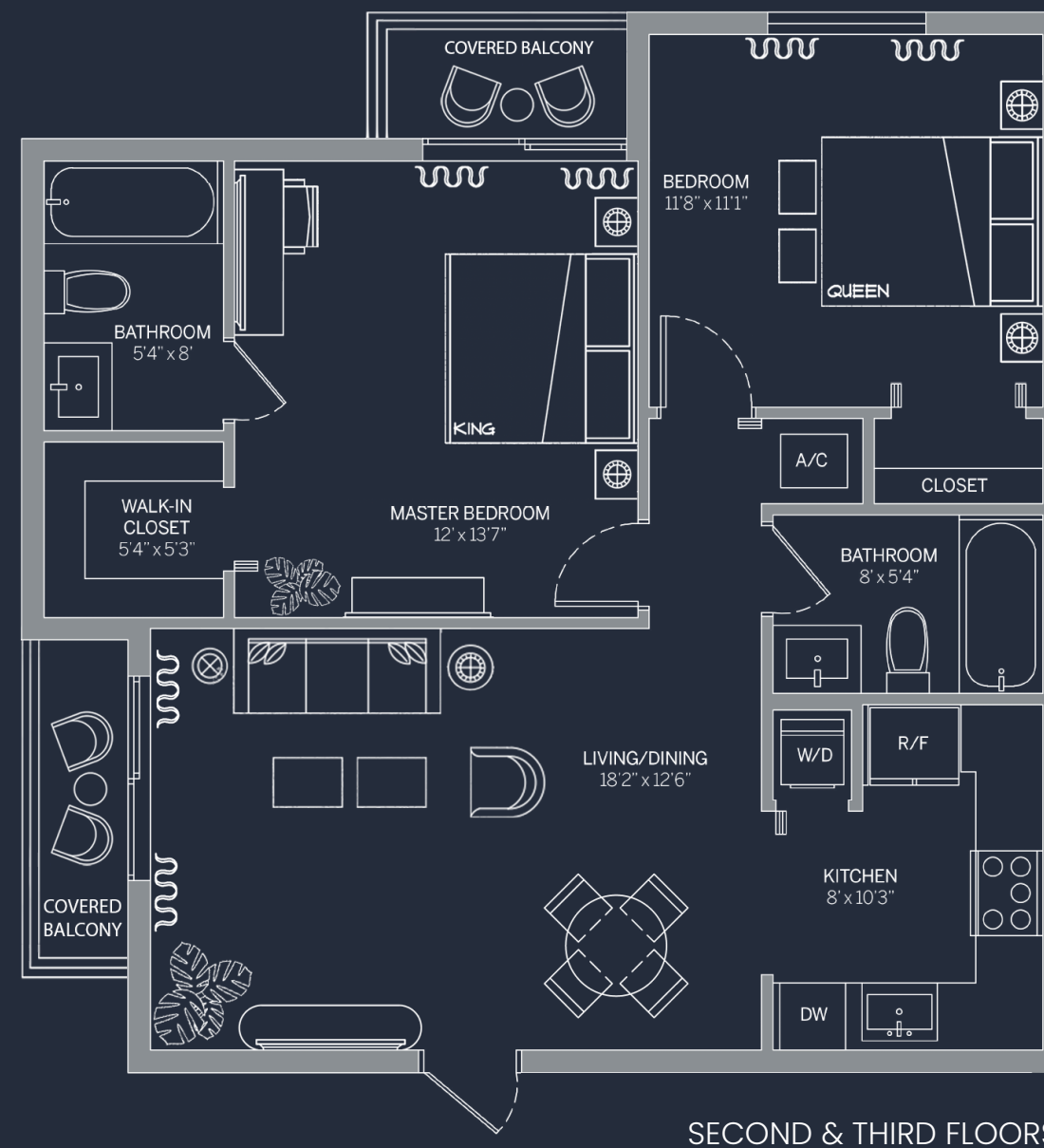
ORAL REPRESENTATIONS CANNOT BE RELIED UPON AS CORRECTLY STATING REPRESENTATIONS OF THE DEVELOPER. FOR CORRECT REPRESENTATIONS, MAKE REFERENCE TO THE DOCUMENTS REQUIRED BY 718.503, FLORIDA STATUTES, TO BE FURNISHED BY A DEVELOPER TO A BUYER OR LESSEE.

BUILDING 618 & 622



C | FLOOR PLAN (2BD / 2BTH)

85lsq.ft.* | 79m²



ATLANTICA

AT DANIA BEACH

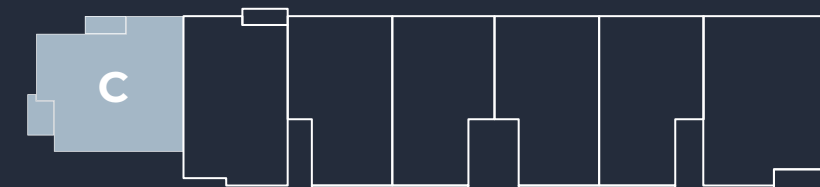


Floorplan C can also appear reversed as this diagram depicts Square footage is approximate, drawings are for representation only, are not drawn to any particular scale, and are subject to change without notice. Please refer back to a later version for more accurate square footage or contact the sales team for more up to date information.

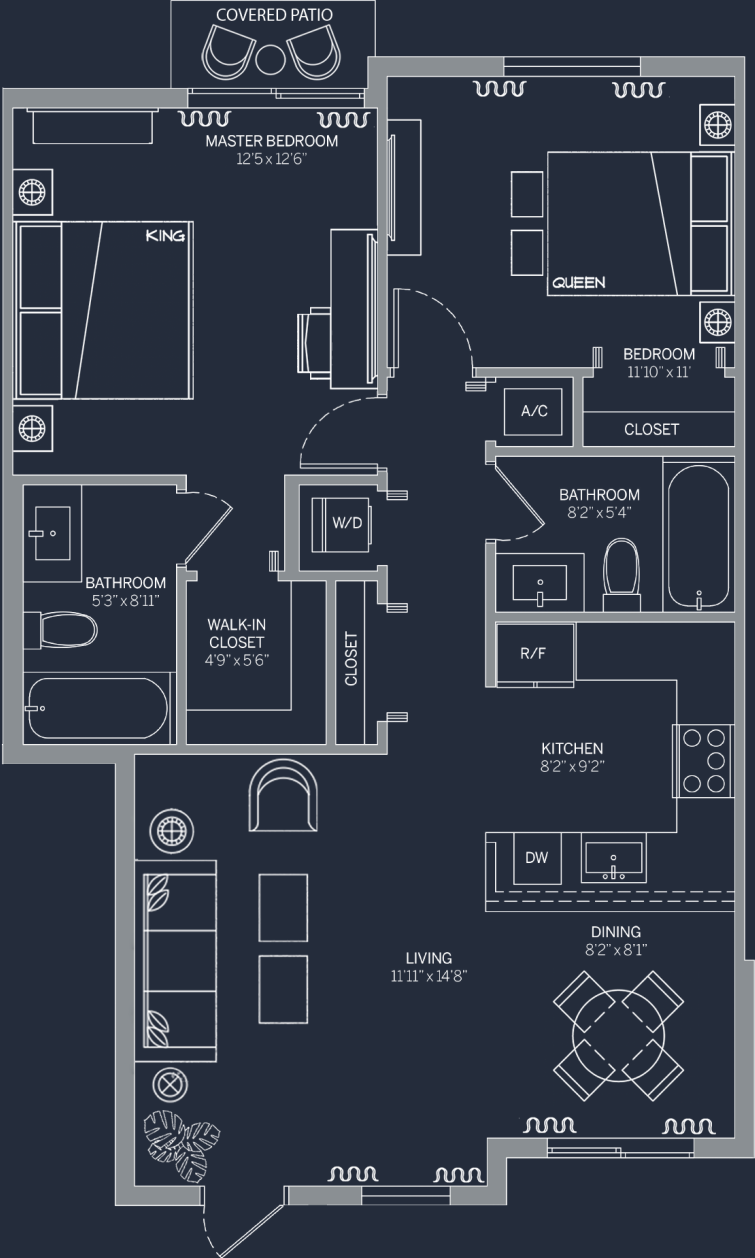
Any renderings and depictions are conceptual only and are for the convenience of reference. They should not be relied upon as representations, express or implied, of the final detail of the Units nor the views from any of the Units.

ORAL REPRESENTATIONS CANNOT BE RELIED UPON AS CORRECTLY STATING REPRESENTATIONS OF THE DEVELOPER. FOR CORRECT REPRESENTATIONS, MAKE REFERENCE TO THE DOCUMENTS REQUIRED BY 718.503, FLORIDA STATUTES, TO BE FURNISHED BY A DEVELOPER TO A BUYER OR LESSEE.

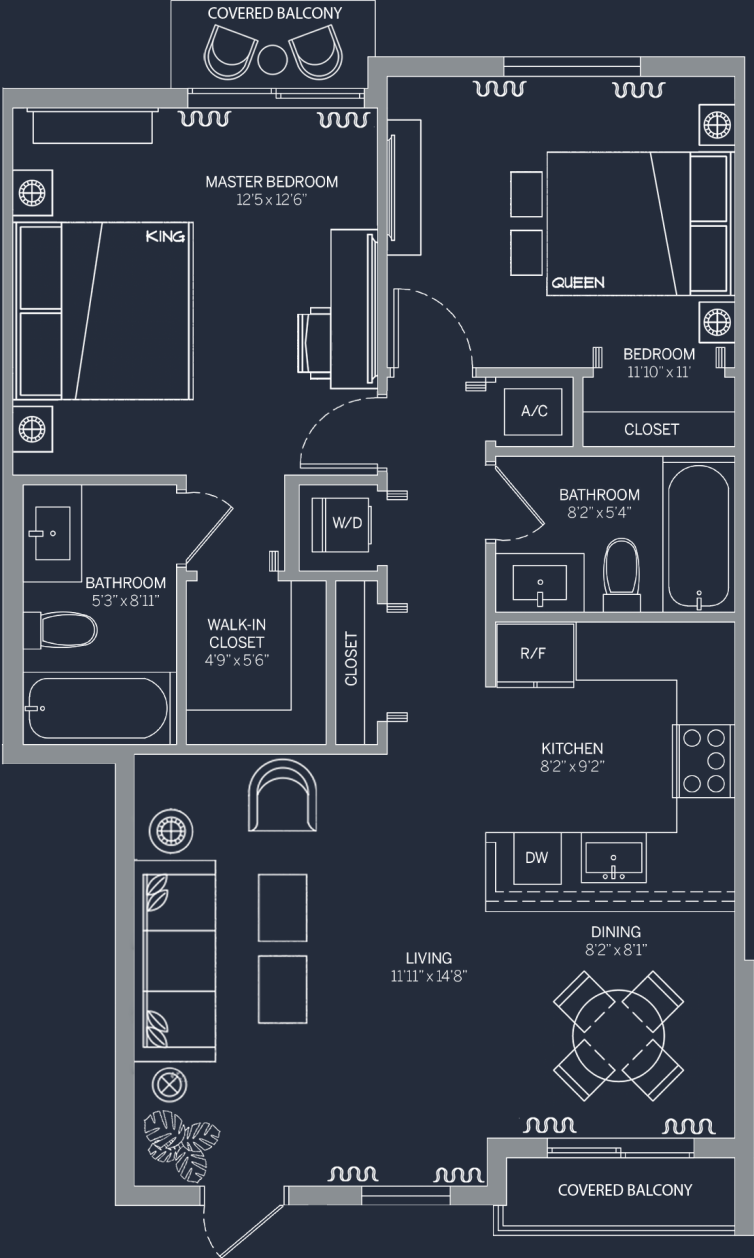
BUILDING 610, 614, 628 & 632



D | FLOOR PLAN (2BD / 2BTH)
893sq.ft.* | 83m²



GROUND FLOOR



SECOND & THIRD FLOORS

ATLANTICA
AT DANIA BEACH

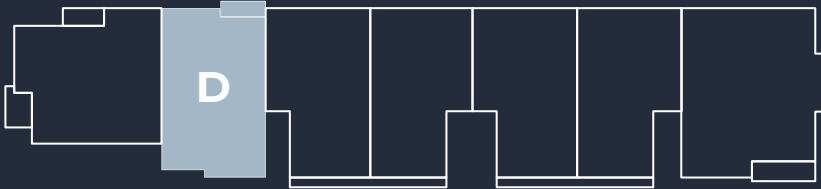


Floorplan D can also appear reversed as this diagram depicts Square footage is approximate, drawings are for representation only, are not drawn to any particular scale, and are subject to change without notice. Please refer back to a later version for more accurate square footage or contact the sales team for more up to date information.

Any renderings and depictions are conceptual only and are for the convenience of reference. They should not be relied upon as representations, express or implied, of the final detail of the Units nor the views from any of the Units.

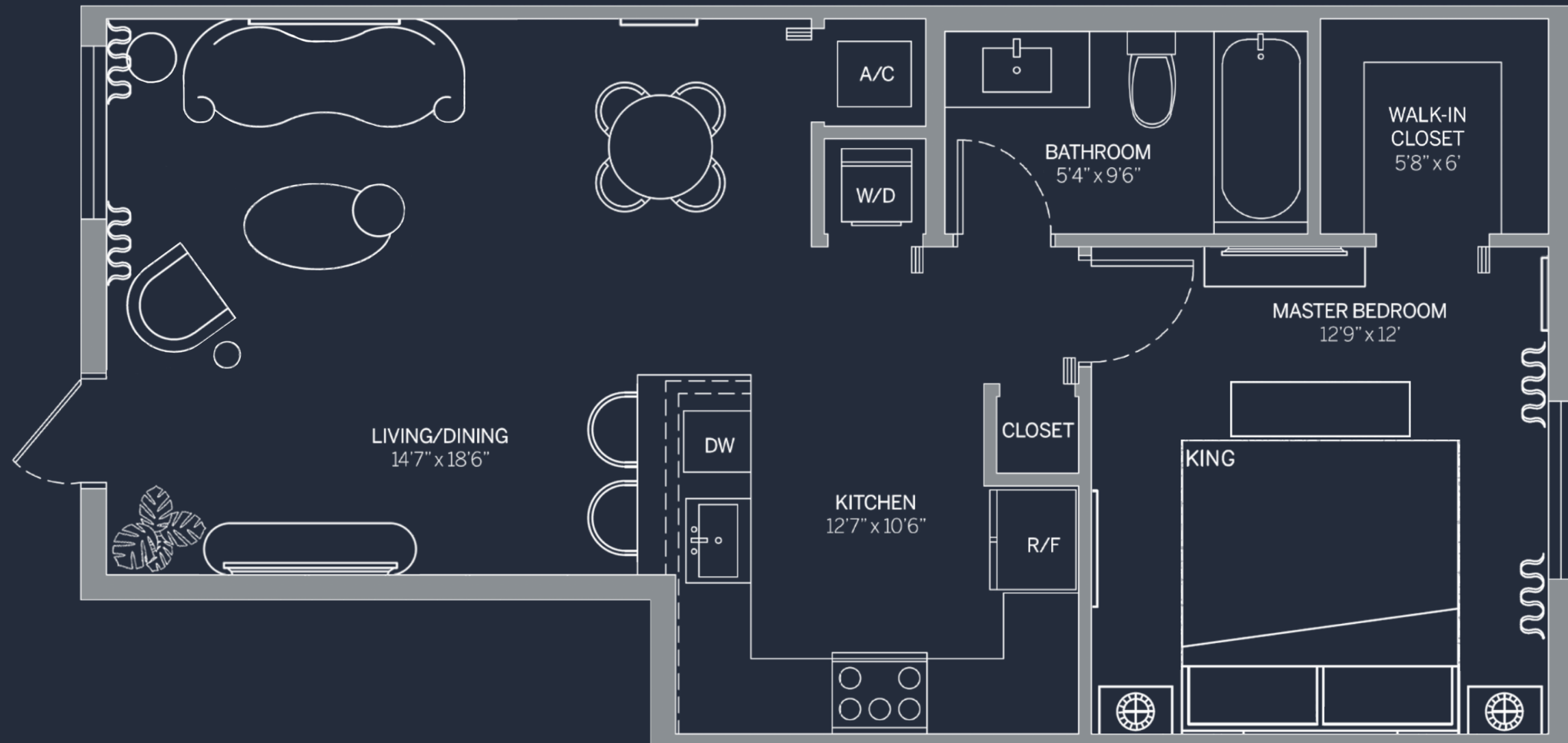
ORAL REPRESENTATIONS CANNOT BE RELIED UPON AS CORRECTLY STATING REPRESENTATIONS OF THE DEVELOPER. FOR CORRECT REPRESENTATIONS, MAKE REFERENCE TO THE DOCUMENTS REQUIRED BY 718.503, FLORIDA STATUTES, TO BE FURNISHED BY A DEVELOPER TO A BUYER OR LESSEE.

BUILDING 610, 614, 628 & 632



E | FLOOR PLAN (1BD / 1BTH)

703sq.ft.* | 65m²



GROUND, SECOND & THIRD FLOORS

ATLANTICA AT DANIA BEACH

BUILDING 610, 614, 628 & 632



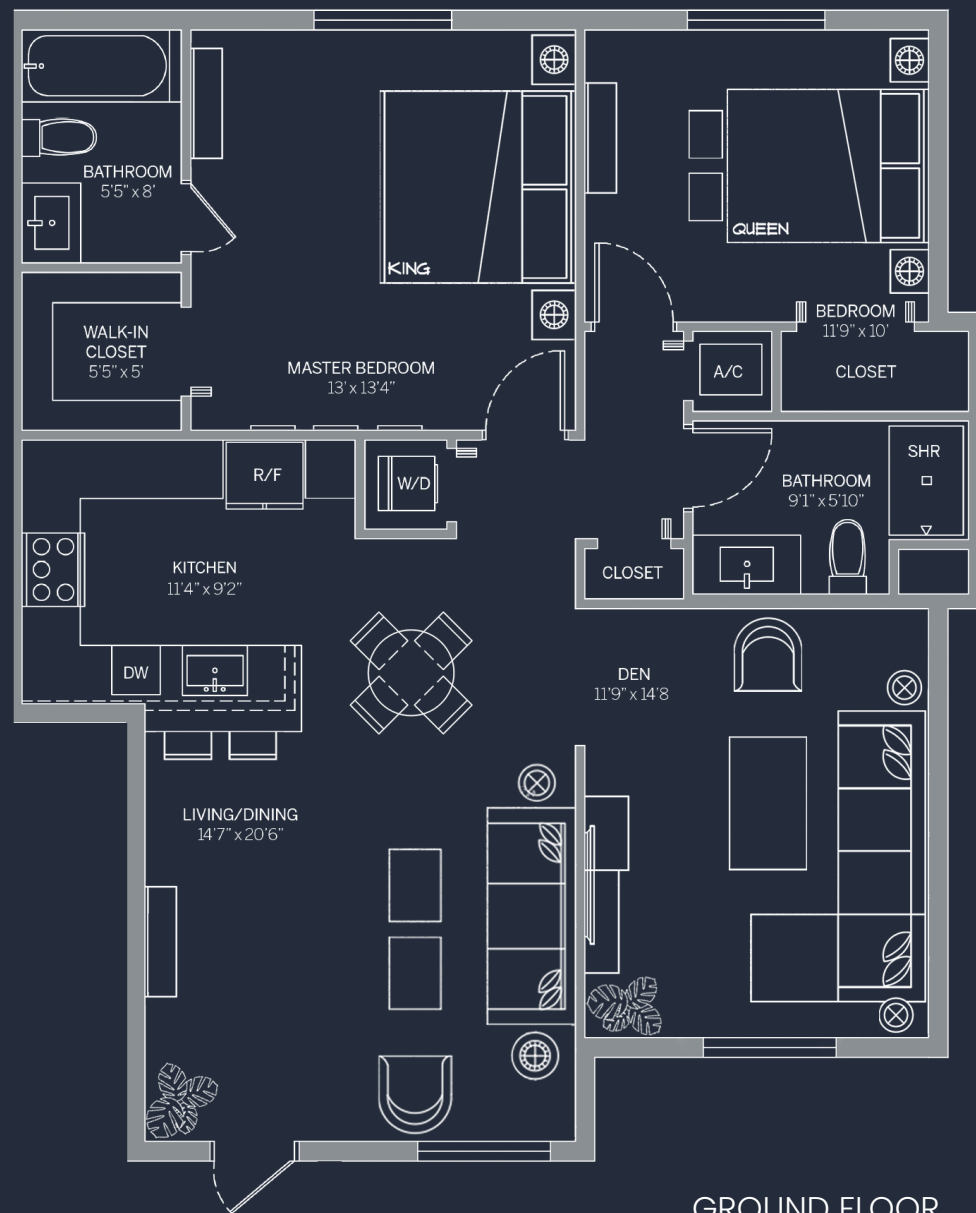
Floorplan E can also appear reversed as this diagram depicts Square footage is approximate, drawings are for representation only, are not drawn to any particular scale, and are subject to change without notice. Please refer back to a later version for more accurate square footage or contact the sales team for more up to date information.

Any renderings and depictions are conceptual only and are for the convenience of reference. They should not be relied upon as representations, express or implied, of the final detail of the Units nor the views from any of the Units.

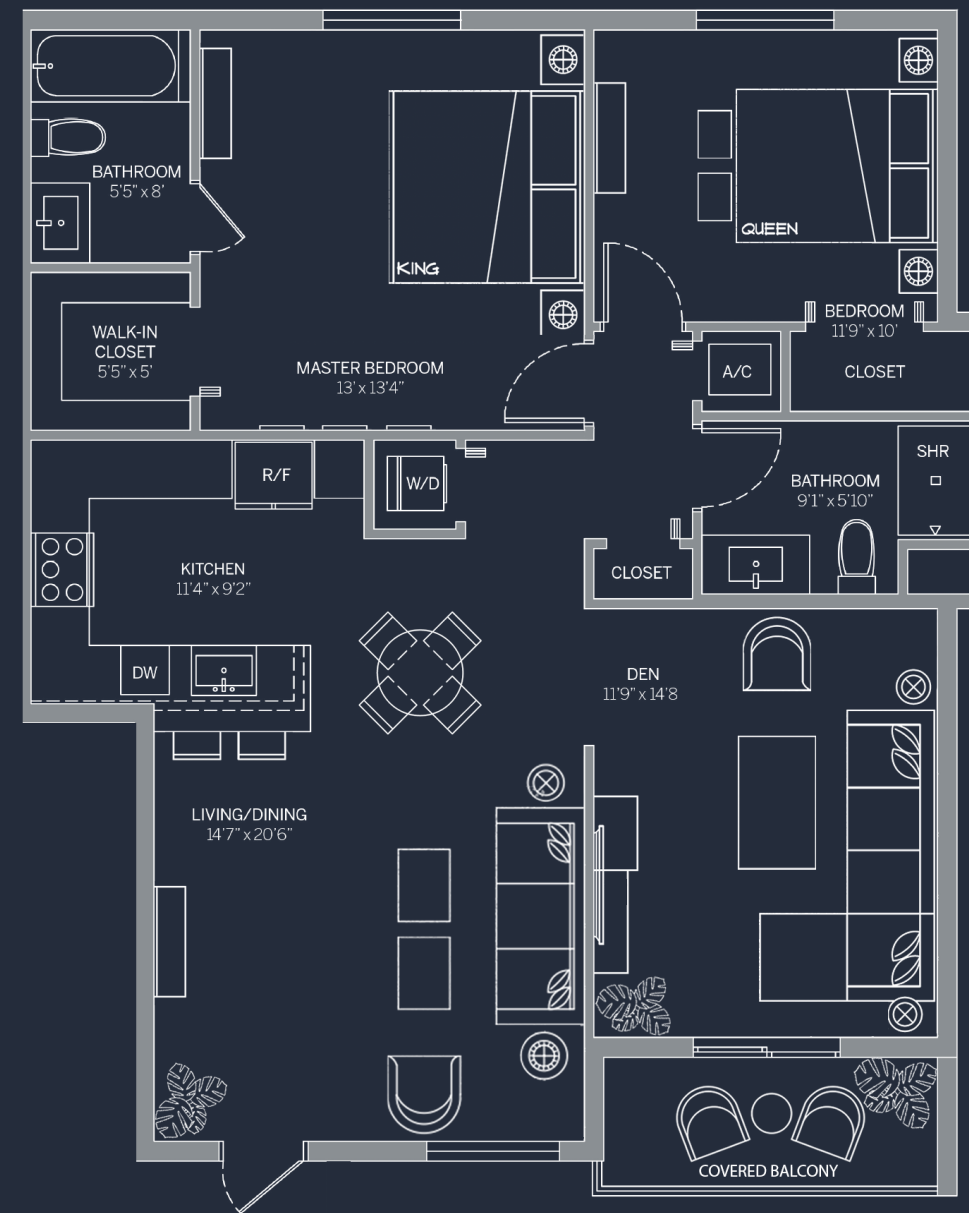
ORAL REPRESENTATIONS CANNOT BE RELIED UPON AS CORRECTLY STATING REPRESENTATIONS OF THE DEVELOPER. FOR CORRECT REPRESENTATIONS, MAKE REFERENCE TO THE DOCUMENTS REQUIRED BY 718.503, FLORIDA STATUTES, TO BE FURNISHED BY A DEVELOPER TO A BUYER OR LESSEE.

F | FLOOR PLAN (2 BED 2 BATH + DEN)

1159sq.ft.* | 108m²



GROUND FLOOR



SECOND & THIRD FLOORS

ATLANTICA

AT DANIA BEACH

BUILDING 610, 614, 628 & 632



Floorplan F can also appear reversed as this diagram depicts Square footage is approximate, drawings are for representation only, are not drawn to any particular scale, and are subject to change without notice. Please refer back to a later version for more accurate square footage or contact the sales team for more up to date information.

Any renderings and depictions are conceptual only and are for the convenience of reference. They should not be relied upon as representations, express or implied, of the final detail of the Units nor the views from any of the Units.

ORAL REPRESENTATIONS CANNOT BE RELIED UPON AS CORRECTLY STATING REPRESENTATIONS OF THE DEVELOPER. FOR CORRECT REPRESENTATIONS, MAKE REFERENCE TO THE DOCUMENTS REQUIRED BY 718.503, FLORIDA STATUTES, TO BE FURNISHED BY A DEVELOPER TO A BUYER OR LESSEE.