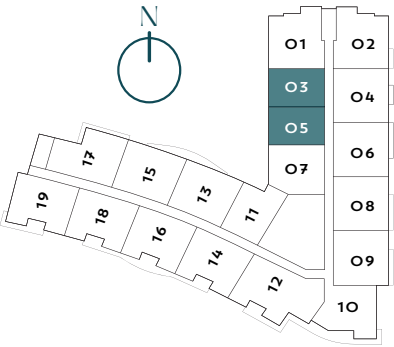
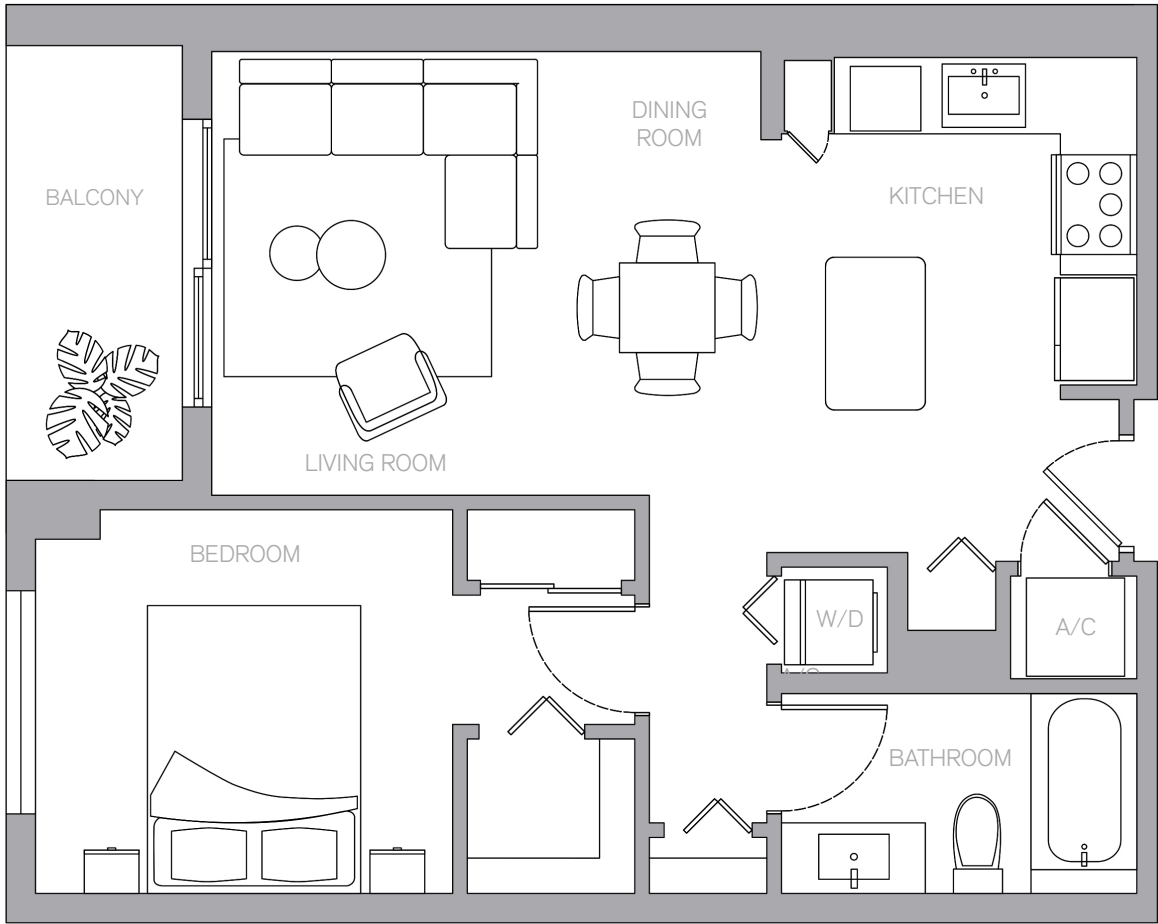


UNIT A1

1 BED | 1 BATH

LIVING	sf
RESIDENCE	741 (69 m ²)



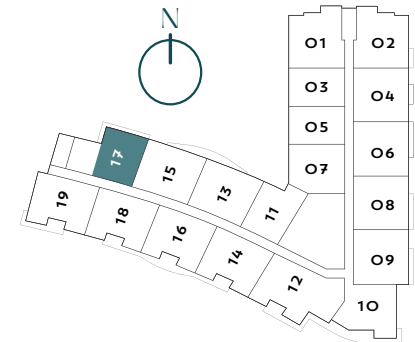
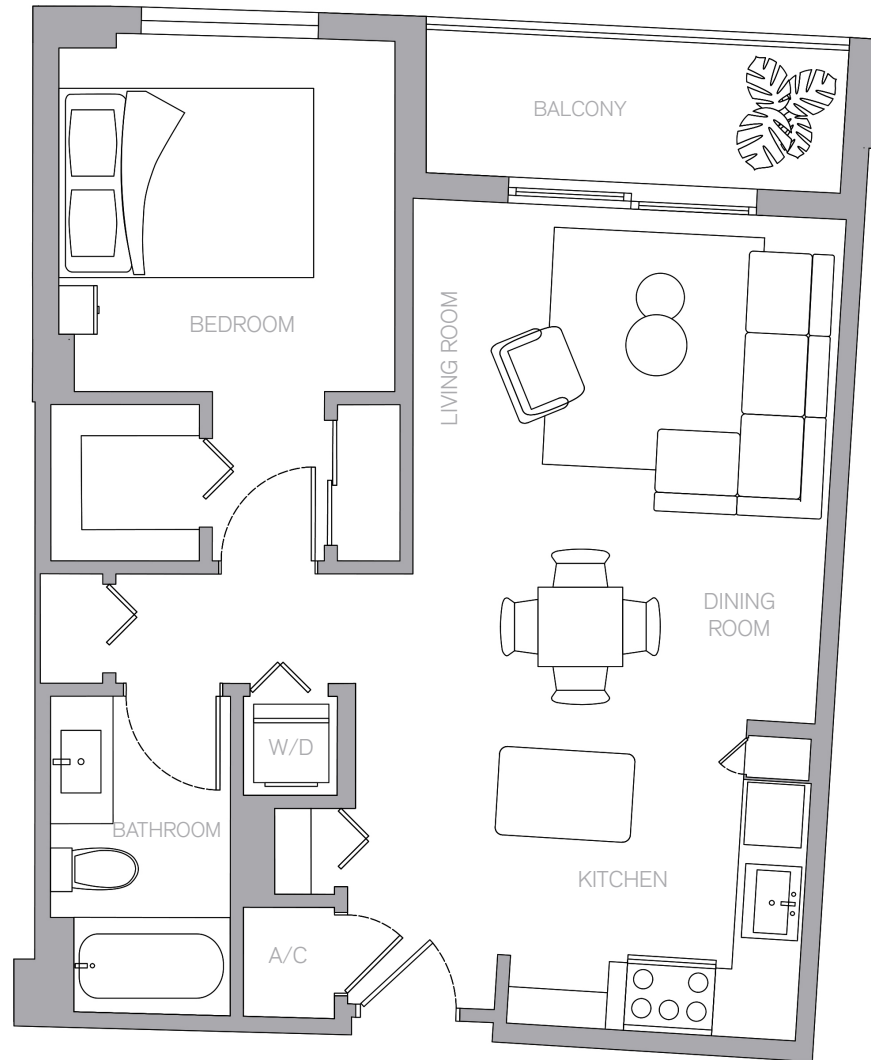
GCF Development, LLC ("GCF") is not the project developer or offeror. This Condominium is being converted and offered by HC Real Property, LLC (the "Developer"). Any and all statements, disclosures and/or representations shall be deemed to be made by Developer and not by GCF and any purchaser agrees to look solely to Developer (and not to GCF and/ or any of its affiliates or principals) with respect to any and all matters relating to the marketing and/or development of the Condominium and with respect to the sales of units in the Condominium. The square footage stated herein is approximate. The size and configuration of balconies and terraces and windows varies throughout the building. For the actual size and configuration of the balcony and windows for your unit consult your Offering documents. All depictions of furnishings, appliances, built-ins, counters, and other matters of detail, including, without limitation, items of finish and decoration, are conceptual only and are not necessarily included in each Unit. The furniture layout and the use of space illustrated are suggested uses only and not intended to guaranty any specific use of space or accommodation of specific furnishings. The furnishings, design features, fixture and decor illustrated are conceptual only and may not be included with a unit purchase. Consult your prospectus and Purchase Agreement to learn what is included with a unit purchase and to review the unit square footage calculation method to be relied upon, which is set forth in the prospectus. This is not intended to be an offer to sell, or solicitation to buy, condominium units to residents of any jurisdiction where prohibited by law, and your eligibility for purchase will depend upon your state of residency. The offering is made only by the prospectus for the condominium and no statement should be relied upon if not made in the prospectus.

ORAL REPRESENTATIONS CANNOT BE RELIED UPON AS CORRECTLY STATING REPRESENTATIONS OF THE DEVELOPER. FOR CORRECT REPRESENTATIONS, MAKE REFERENCE TO THIS BROCHURE AND TO THE DOCUMENTS REQUIRED BY 718.508, FLORIDA STATUTES, TO BE FURNISHED BY A DEVELOPER TO A BUYER OR LESSEE.



1 BED | 1 BATH

LIVING	sf
RESIDENCE	765 (71 m ²)



CIRC
RESIDENCES
HOLLYWOOD

GCF Development, LLC ("GCF") is not the project developer or offeror. This Condominium is being converted and offered by HC Real Property, LLC (the "Developer"). Any and all statements, disclosures and/or representations shall be deemed to be made by Developer and not by GCF and any purchaser agrees to look solely to Developer (and not to GCF and/or any of its affiliates or principals) with respect to any and all matters relating to the marketing and/or development of the Condominium and with respect to the sales of units in the Condominium. The square footage stated herein is approximate. The size and configuration of balconies and terraces and windows varies throughout the building. For the actual size and configuration of the balcony and windows for your unit consult your Offering documents. All depictions of furnishings, appliances, built-ins, counters, and other matters of detail, including, without limitation, items of finish and decoration, are conceptual only and are not necessarily included in each Unit. The furniture layout and the use of space illustrated are suggested uses only and not intended to guaranty any specific use of space or accommodation of specific furnishings. The furnishings, design features, fixture and decor illustrated are conceptual only and may not be included with a unit purchase. Consult your prospectus and Purchase Agreement to learn what is included with a unit purchase and to review the unit square footage calculation method to be relied upon, which is set forth in the prospectus. This is not intended to be an offer to sell, or solicitation to buy, condominium units to residents of any jurisdiction where prohibited by law, and your eligibility for purchase will depend upon your state of residency. The offering is made only by the prospectus for the condominium and no statement should be relied upon if not made in the prospectus.

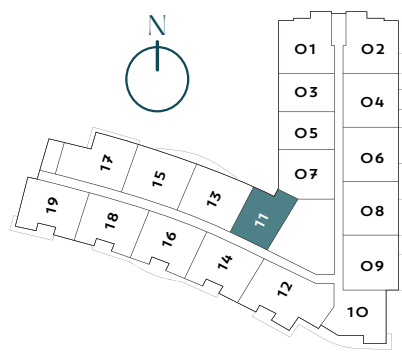
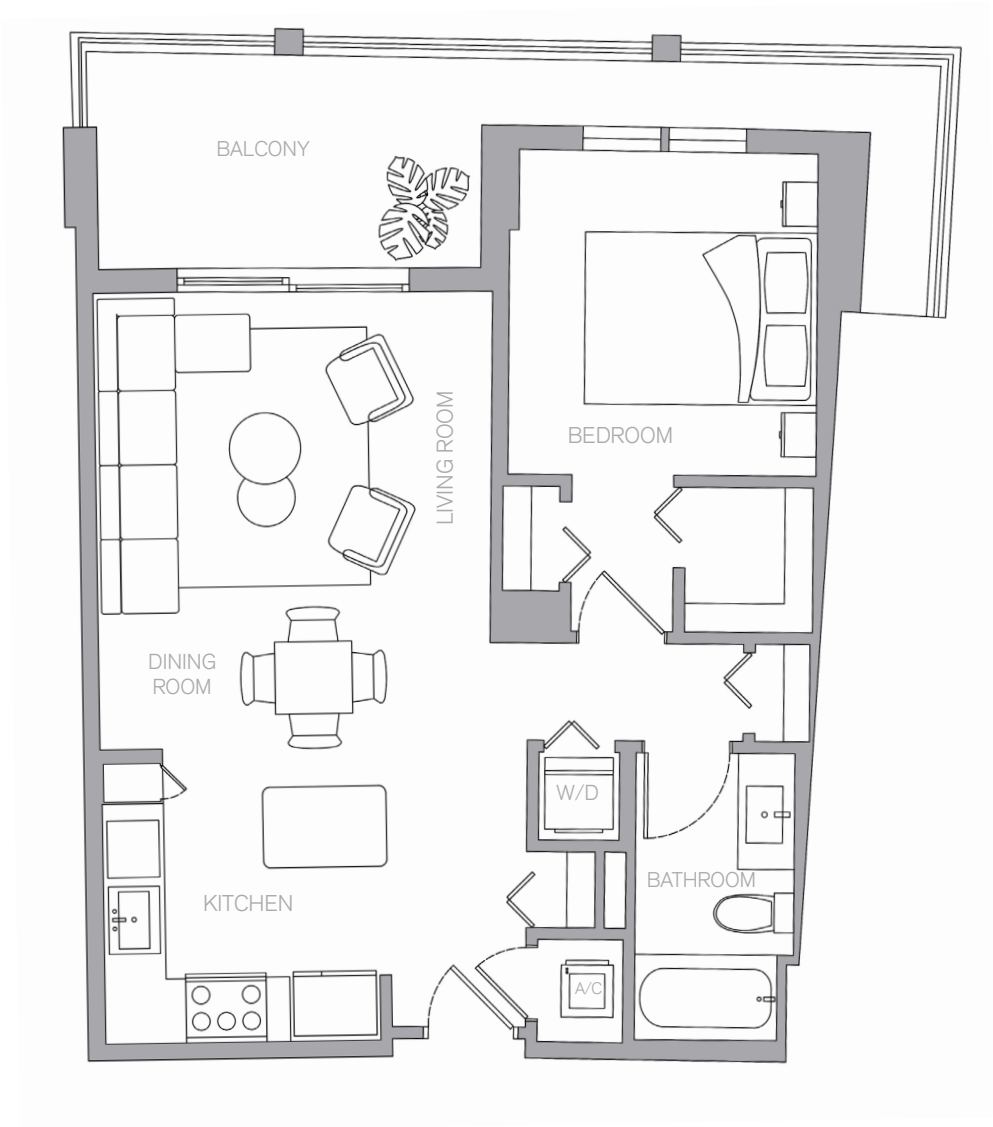
ORAL REPRESENTATIONS CANNOT BE RELIED UPON AS CORRECTLY STATING REPRESENTATIONS OF THE DEVELOPER. FOR CORRECT REPRESENTATIONS, MAKE REFERENCE TO THIS BROCHURE AND TO THE DOCUMENTS REQUIRED BY 718.503, FLORIDA STATUTES, TO BE FURNISHED BY A DEVELOPER TO A BUYER OR LESSEE.



UNIT A3

1 BED | 1 BATH

LIVING	sf
RESIDENCE	772 (72 m ²)



GCF Development, LLC ("GCF") is not the project developer or offeror. This Condominium is being converted and offered by HC Real Property, LLC (the "Developer"). Any and all statements, disclosures and/or representations shall be deemed to be made by Developer and not by GCF and any purchaser agrees to look solely to Developer (and not to GCF and/ or any of its affiliates or principals) with respect to any and all matters relating to the marketing and/or development of the Condominium and with respect to the sales of units in the Condominium. The square footage stated herein is approximate. The size and configuration of balconies and terraces and windows varies throughout the building. For the actual size and configuration of the balcony and windows for your unit consult your Offering documents. All depictions of furnishings, appliances, built-ins, counters, and other matters of detail, including, without limitation, items of finish and decoration, are conceptual only and are not necessarily included in each Unit. The furniture layout and the use of space illustrated are suggested uses only and not intended to guaranty any specific use of space or accommodation of specific furnishings. The furnishings, design features, fixture and decor illustrated are conceptual only and may not be included with a unit purchase. Consult your prospectus and Purchase Agreement to learn what is included with a unit purchase and to review the unit square footage calculation method to be relied upon, which is set forth in the prospectus. This is not intended to be an offer to sell, or solicitation to buy, condominium units to residents of any jurisdiction where prohibited by law, and your eligibility for purchase will depend upon your state of residency. The offering is made only by the prospectus for the condominium and no statement should be relied upon if not made in the prospectus.

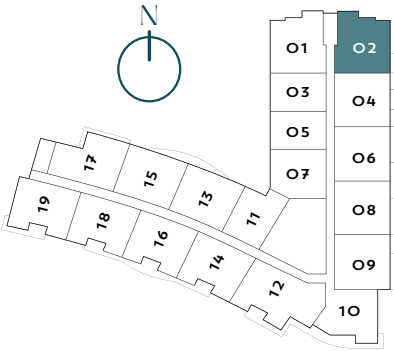
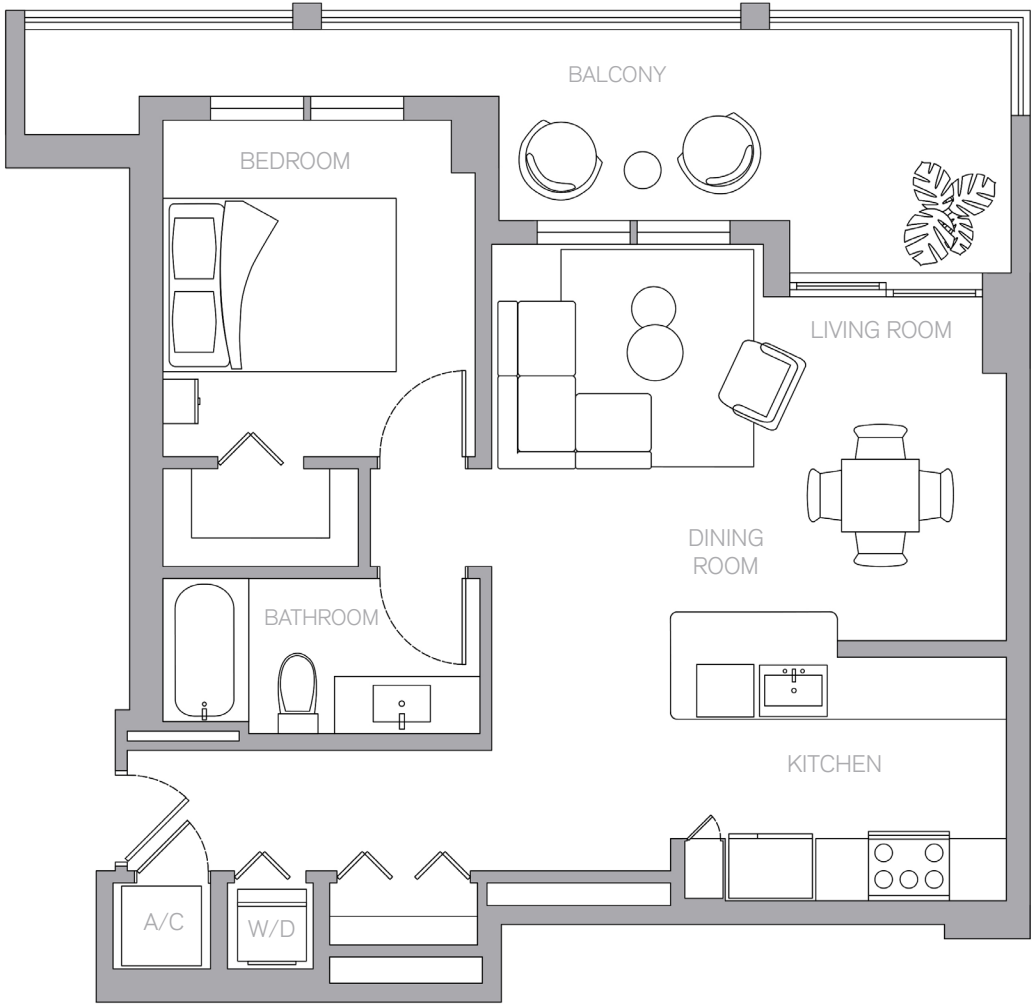
ORAL REPRESENTATIONS CANNOT BE RELIED UPON AS CORRECTLY STATING REPRESENTATIONS OF THE DEVELOPER. FOR CORRECT REPRESENTATIONS, MAKE REFERENCE TO THIS BROCHURE AND TO THE DOCUMENTS REQUIRED BY 718.508, FLORIDA STATUTES, TO BE FURNISHED BY A DEVELOPER TO A BUYER OR LESSEE.



UNIT A4

1 BED | 1 BATH

LIVING	sf
RESIDENCE	816 (76 m ²)



GCF Development, LLC ("GCF") is not the project developer or offeror. This Condominium is being converted and offered by HC Real Property, LLC (the "Developer"). Any and all statements, disclosures and/or representations shall be deemed to be made by Developer and not by GCF and any purchaser agrees to look solely to Developer (and not to GCF and/ or any of its affiliates or principals) with respect to any and all matters relating to the marketing and/or development of the Condominium and with respect to the sales of units in the Condominium. The square footage stated herein is approximate. The size and configuration of balconies and terraces and windows varies throughout the building. For the actual size and configuration of the balcony and windows for your unit consult your Offering documents. All depictions of furnishings, appliances, built-ins, counters, and other matters of detail, including, without limitation, items of finish and decoration, are conceptual only and are not necessarily included in each Unit. The furniture layout and the use of space illustrated are suggested uses only and not intended to guaranty any specific use of space or accommodation of specific furnishings. The furnishings, design features, fixture and decor illustrated are conceptual only and may not be included with a unit purchase. Consult your prospectus and Purchase Agreement to learn what is included with a unit purchase and to review the unit square footage calculation method to be relied upon, which is set forth in the prospectus. This is not intended to be an offer to sell, or solicitation to buy, condominium units to residents of any jurisdiction where prohibited by law, and your eligibility for purchase will depend upon your state of residency. The offering is made only by the prospectus for the condominium and no statement should be relied upon if not made in the prospectus.

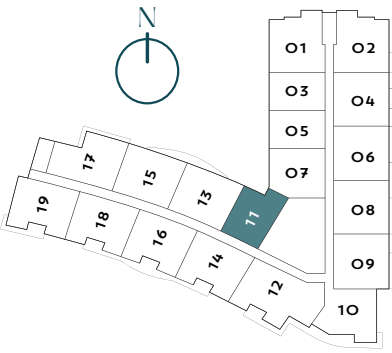
ORAL REPRESENTATIONS CANNOT BE RELIED UPON AS CORRECTLY STATING REPRESENTATIONS OF THE DEVELOPER. FOR CORRECT REPRESENTATIONS, MAKE REFERENCE TO THIS BROCHURE AND TO THE DOCUMENTS REQUIRED BY 718.508, FLORIDA STATUTES, TO BE FURNISHED BY A DEVELOPER TO A BUYER OR LESSEE.



UNIT A5

1 BED | 1 BATH

LIVING	sf
RESIDENCE	830
	(78 m²)



GCF Development, LLC ("GCF") is not the project developer or offeror. This Condominium is being converted and offered by HC Real Property, LLC (the "Developer"). Any and all statements, disclosures and/or representations shall be deemed to be made by Developer and not by GCF and any purchaser agrees to look solely to Developer (and not to GCF and/ or any of its affiliates or principals) with respect to any and all matters relating to the marketing and/or development of the Condominium and with respect to the sales of units in the Condominium. The square footage stated herein is approximate. The size and configuration of balconies and terraces and windows varies throughout the building. For the actual size and configuration of the balcony and windows for your unit consult your Offering documents. All depictions of furnishings, appliances, built-ins, counters, and other matters of detail, including, without limitation, items of finish and decoration, are conceptual only and are not necessarily included in each Unit. The furniture layout and the use of space illustrated are suggested uses only and not intended to guaranty any specific use of space or accommodation of specific furnishings. The furnishings, design features, fixture and decor illustrated are conceptual only and may not be included with a unit purchase. Consult your prospectus and Purchase Agreement to learn what is included with a unit purchase and to review the unit square footage calculation method to be relied upon, which is set forth in the prospectus. This is not intended to be an offer to sell, or solicitation to buy, condominium units to residents of any jurisdiction where prohibited by law, and your eligibility for purchase will depend upon your state of residency. The offering is made only by the prospectus for the condominium and no statement should be relied upon if not made in the prospectus.

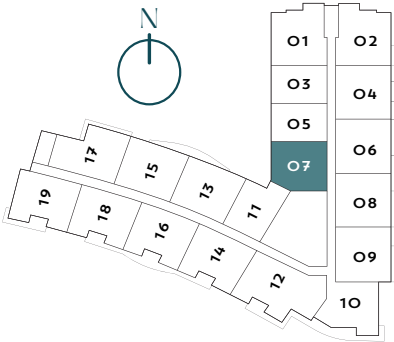
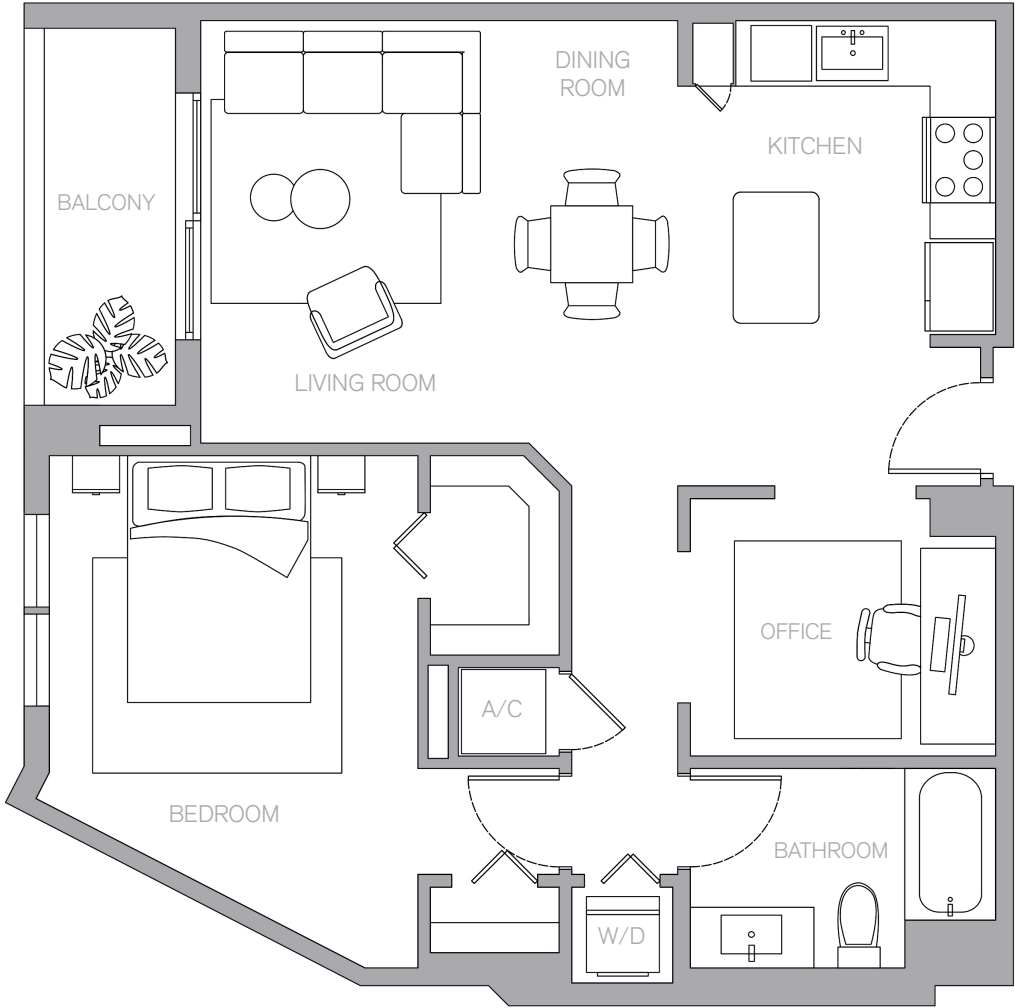
ORAL REPRESENTATIONS CANNOT BE RELIED UPON AS CORRECTLY STATING REPRESENTATIONS OF THE DEVELOPER. FOR CORRECT REPRESENTATIONS, MAKE REFERENCE TO THIS BROCHURE AND TO THE DOCUMENTS REQUIRED BY 718.508, FLORIDA STATUTES, TO BE FURNISHED BY A DEVELOPER TO A BUYER OR LESSEE.



UNIT A6

1 BED | 1 BATH

LIVING	sf
RESIDENCE	940 (88 m ²)



GCF Development, LLC ("GCF") is not the project developer or offeror. This Condominium is being converted and offered by HC Real Property, LLC (the "Developer"). Any and all statements, disclosures and/or representations shall be deemed to be made by Developer and not by GCF and any purchaser agrees to look solely to Developer (and not to GCF and/ or any of its affiliates or principals) with respect to any and all matters relating to the marketing and/or development of the Condominium and with respect to the sales of units in the Condominium. The square footage stated herein is approximate. The size and configuration of balconies and terraces and windows varies throughout the building. For the actual size and configuration of the balcony and windows for your unit consult your Offering documents. All depictions of furnishings, appliances, built-ins, counters, and other matters of detail, including, without limitation, items of finish and decoration, are conceptual only and are not necessarily included in each Unit. The furniture layout and the use of space illustrated are suggested uses only and not intended to guaranty any specific use of space or accommodation of specific furnishings. The furnishings, design features, fixture and decor illustrated are conceptual only and may not be included with a unit purchase. Consult your prospectus and Purchase Agreement to learn what is included with a unit purchase and to review the unit square footage calculation method to be relied upon, which is set forth in the prospectus. This is not intended to be an offer to sell, or solicitation to buy, condominium units to residents of any jurisdiction where prohibited by law, and your eligibility for purchase will depend upon your state of residency. The offering is made only by the prospectus for the condominium and no statement should be relied upon if not made in the prospectus.

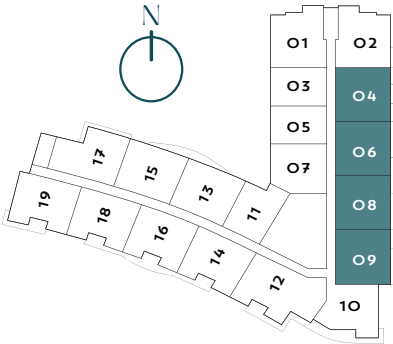
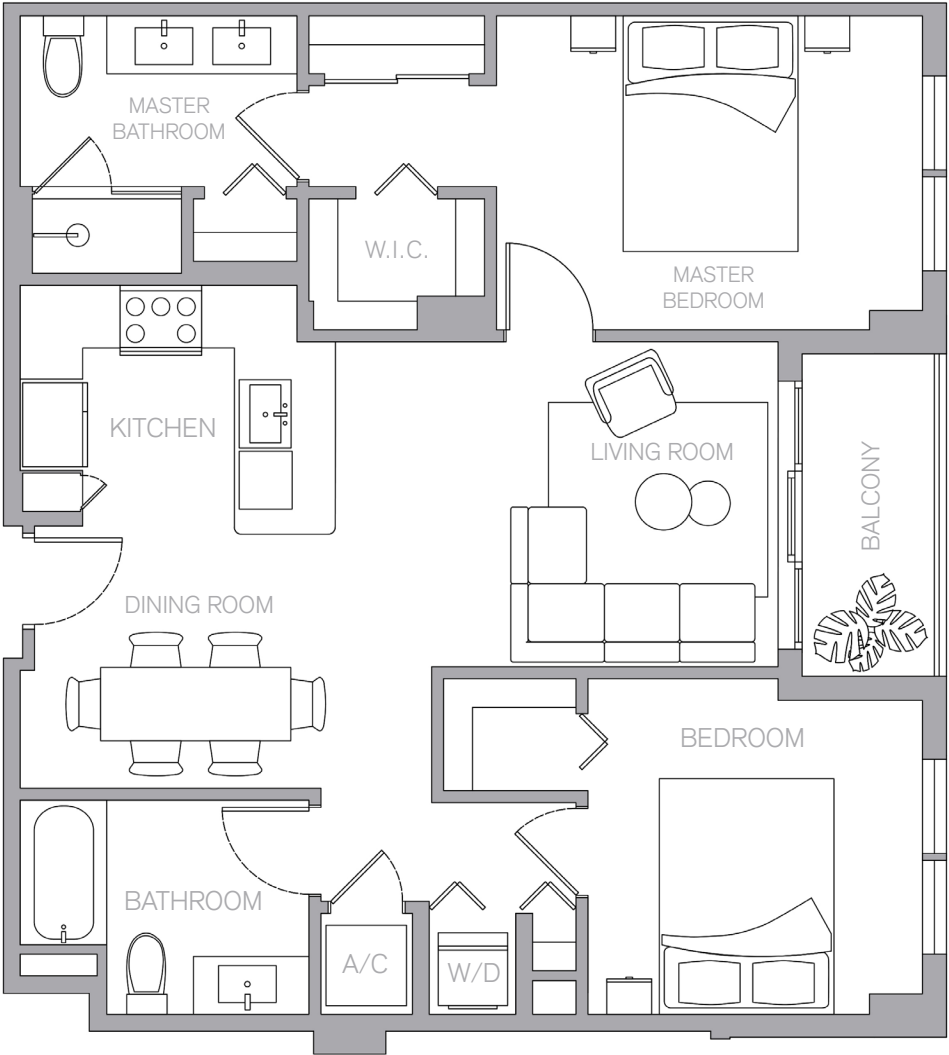
ORAL REPRESENTATIONS CANNOT BE RELIED UPON AS CORRECTLY STATING REPRESENTATIONS OF THE DEVELOPER. FOR CORRECT REPRESENTATIONS, MAKE REFERENCE TO THIS BROCHURE AND TO THE DOCUMENTS REQUIRED BY 718.503, FLORIDA STATUTES, TO BE FURNISHED BY A DEVELOPER TO A BUYER OR LESSEE.



UNIT B1

2 BED | 2 BATH

LIVING	sf
RESIDENCE	1,079 (100 m ²)



GCF Development, LLC ("GCF") is not the project developer or offeror. This Condominium is being converted and offered by HC Real Property, LLC (the "Developer"). Any and all statements, disclosures and/or representations shall be deemed to be made by Developer and not by GCF and any purchaser agrees to look solely to Developer (and not to GCF and/or any of its affiliates or principals) with respect to any and all matters relating to the marketing and/or development of the Condominium and with respect to the sales of units in the Condominium. The square footage stated herein is approximate. The size and configuration of balconies and terraces and windows varies throughout the building. For the actual size and configuration of the balcony and windows for your unit consult your Offering documents. All depictions of furnishings, appliances, built-ins, counters, and other matters of detail, including, without limitation, items of finish and decoration, are conceptual only and are not necessarily included in each Unit. The furniture layout and the use of space illustrated are suggested uses only and not intended to guaranty any specific use of space or accommodation of specific furnishings. The furnishings, design features, fixture and decor illustrated are conceptual only and may not be included with a unit purchase. Consult your prospectus and Purchase Agreement to learn what is included with a unit purchase and to review the unit square footage calculation method to be relied upon, which is set forth in the prospectus. This is not intended to be an offer to sell, or solicitation to buy, condominium units to residents of any jurisdiction where prohibited by law, and your eligibility for purchase will depend upon your state of residency. The offering is made only by the prospectus for the condominium and no statement should be relied upon if not made in the prospectus.

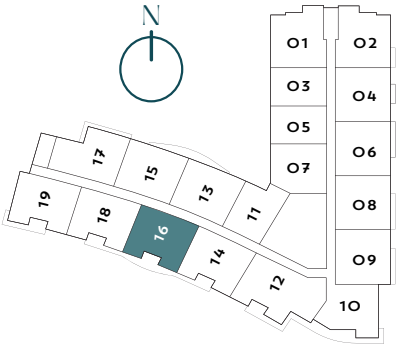
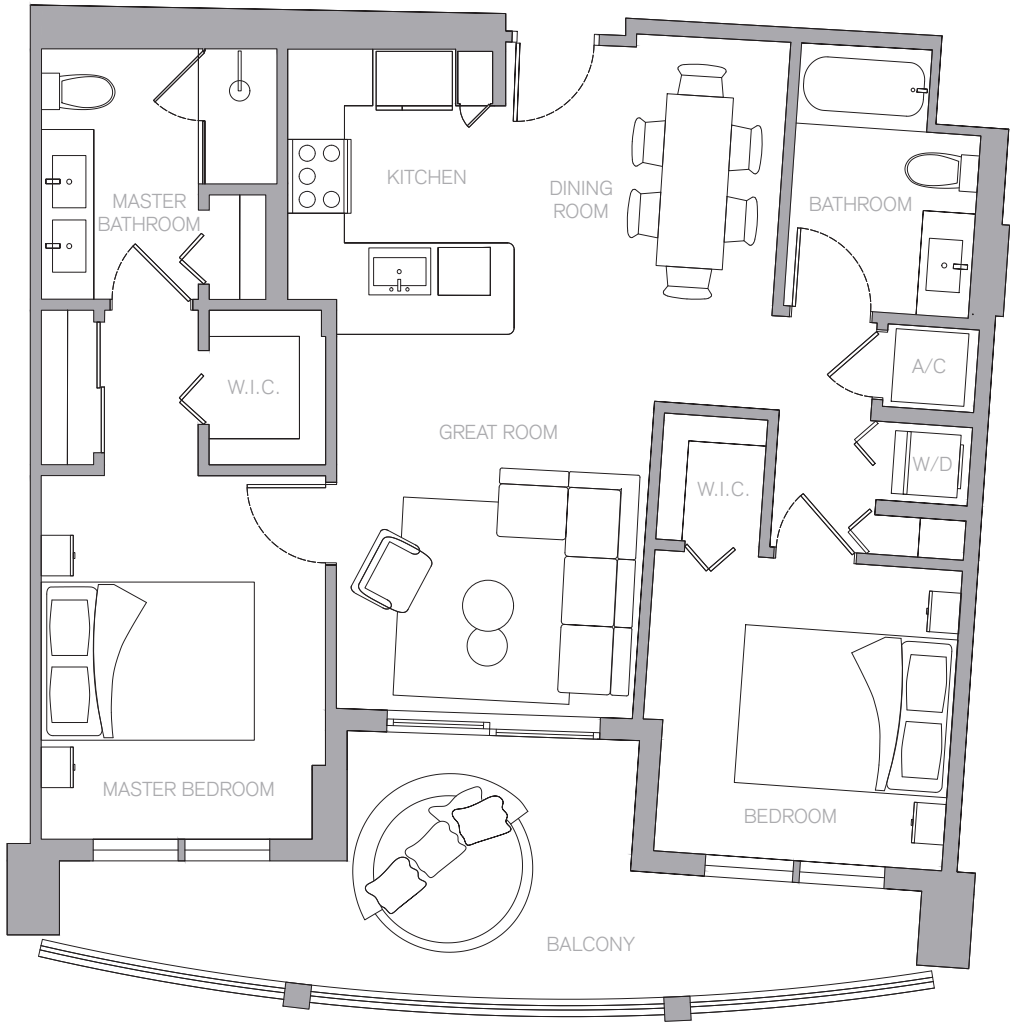
ORAL REPRESENTATIONS CANNOT BE RELIED UPON AS CORRECTLY STATING REPRESENTATIONS OF THE DEVELOPER. FOR CORRECT REPRESENTATIONS, MAKE REFERENCE TO THIS BROCHURE AND TO THE DOCUMENTS REQUIRED BY 718.503, FLORIDA STATUTES, TO BE FURNISHED BY A DEVELOPER TO A BUYER OR LESSEE.



UNIT B2

2 BED | 2 BATH

LIVING	sf
RESIDENCE	1,099 (102 m ²)



GCF Development, LLC ("GCF") is not the project developer or offeror. This Condominium is being converted and offered by HC Real Property, LLC (the "Developer"). Any and all statements, disclosures and/or representations shall be deemed to be made by Developer and not by GCF and any purchaser agrees to look solely to Developer (and not to GCF and/or any of its affiliates or principals) with respect to any and all matters relating to the marketing and/or development of the Condominium and with respect to the sales of units in the Condominium. The square footage stated herein is approximate. The size and configuration of balconies and terraces and windows varies throughout the building. For the actual size and configuration of the balcony and windows for your unit consult your Offering documents. All depictions of furnishings, appliances, built-ins, counters, and other matters of detail, including, without limitation, items of finish and decoration, are conceptual only and are not necessarily included in each Unit. The furniture layout and the use of space illustrated are suggested uses only and not intended to guaranty any specific use of space or accommodation of specific furnishings. The furnishings, design features, fixture and decor illustrated are conceptual only and may not be included with a unit purchase. Consult your prospectus and Purchase Agreement to learn what is included with a unit purchase and to review the unit square footage calculation method to be relied upon, which is set forth in the prospectus. This is not intended to be an offer to sell, or solicitation to buy, condominium units to residents of any jurisdiction where prohibited by law, and your eligibility for purchase will depend upon your state of residency. The offering is made only by the prospectus for the condominium and no statement should be relied upon if not made in the prospectus.

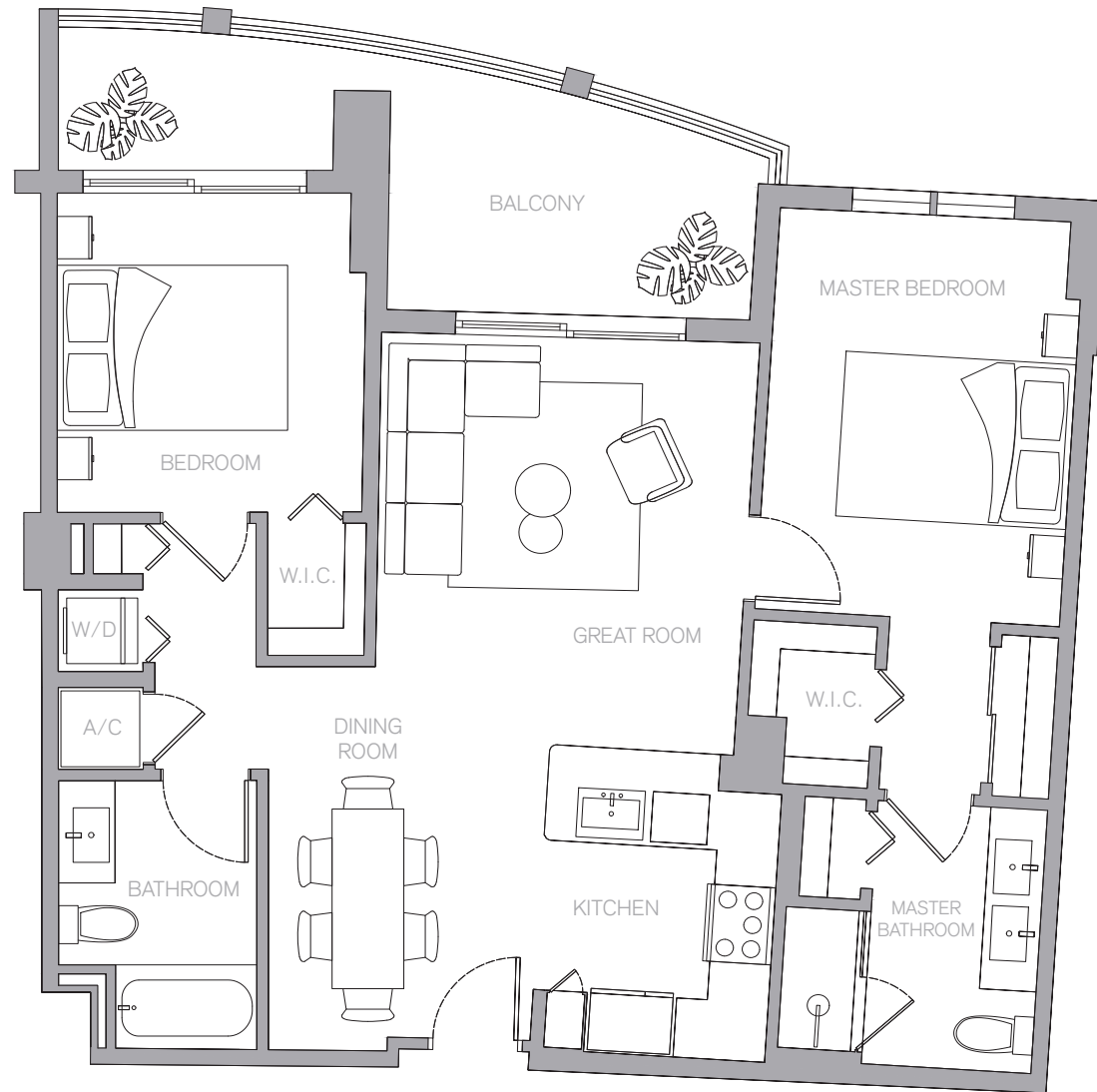
ORAL REPRESENTATIONS CANNOT BE RELIED UPON AS CORRECTLY STATING REPRESENTATIONS OF THE DEVELOPER. FOR CORRECT REPRESENTATIONS, MAKE REFERENCE TO THIS BROCHURE AND TO THE DOCUMENTS REQUIRED BY 718.503, FLORIDA STATUTES, TO BE FURNISHED BY A DEVELOPER TO A BUYER OR LESSEE.



UNIT B3

2 BED | 2 BATH

LIVING	sf
RESIDENCE	1,100 (103 m ²)



CIRC
RESIDENCES
HOLLYWOOD

GCF Development, LLC ("GCF") is not the project developer or offeror. This Condominium is being converted and offered by HC Real Property, LLC (the "Developer"). Any and all statements, disclosures and/or representations shall be deemed to be made by Developer and not by GCF and any purchaser agrees to look solely to Developer (and not to GCF and/or any of its affiliates or principals) with respect to any and all matters relating to the marketing and/or development of the Condominium and with respect to the sales of units in the Condominium. The square footage stated herein is approximate. The size and configuration of balconies and terraces and windows varies throughout the building. For the actual size and configuration of the balcony and windows for your unit consult your Offering documents. All depictions of furnishings, appliances, built-ins, counters, and other matters of detail, including, without limitation, items of finish and decoration, are conceptual only and are not necessarily included in each Unit. The furniture layout and the use of space illustrated are suggested uses only and not intended to guaranty any specific use of space or accommodation of specific furnishings. The furnishings, design features, fixture and decor illustrated are conceptual only and may not be included with a unit purchase. Consult your prospectus and Purchase Agreement to learn what is included with a unit purchase and to review the unit square footage calculation method to be relied upon, which is set forth in the prospectus. This is not intended to be an offer to sell, or solicitation to buy, condominium units to residents of any jurisdiction where prohibited by law, and your eligibility for purchase will depend upon your state of residency. The offering is made only by the prospectus for the condominium and no statement should be relied upon if not made in the prospectus.

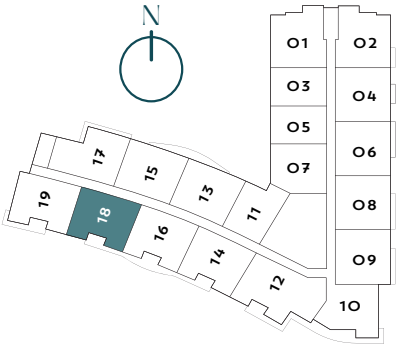
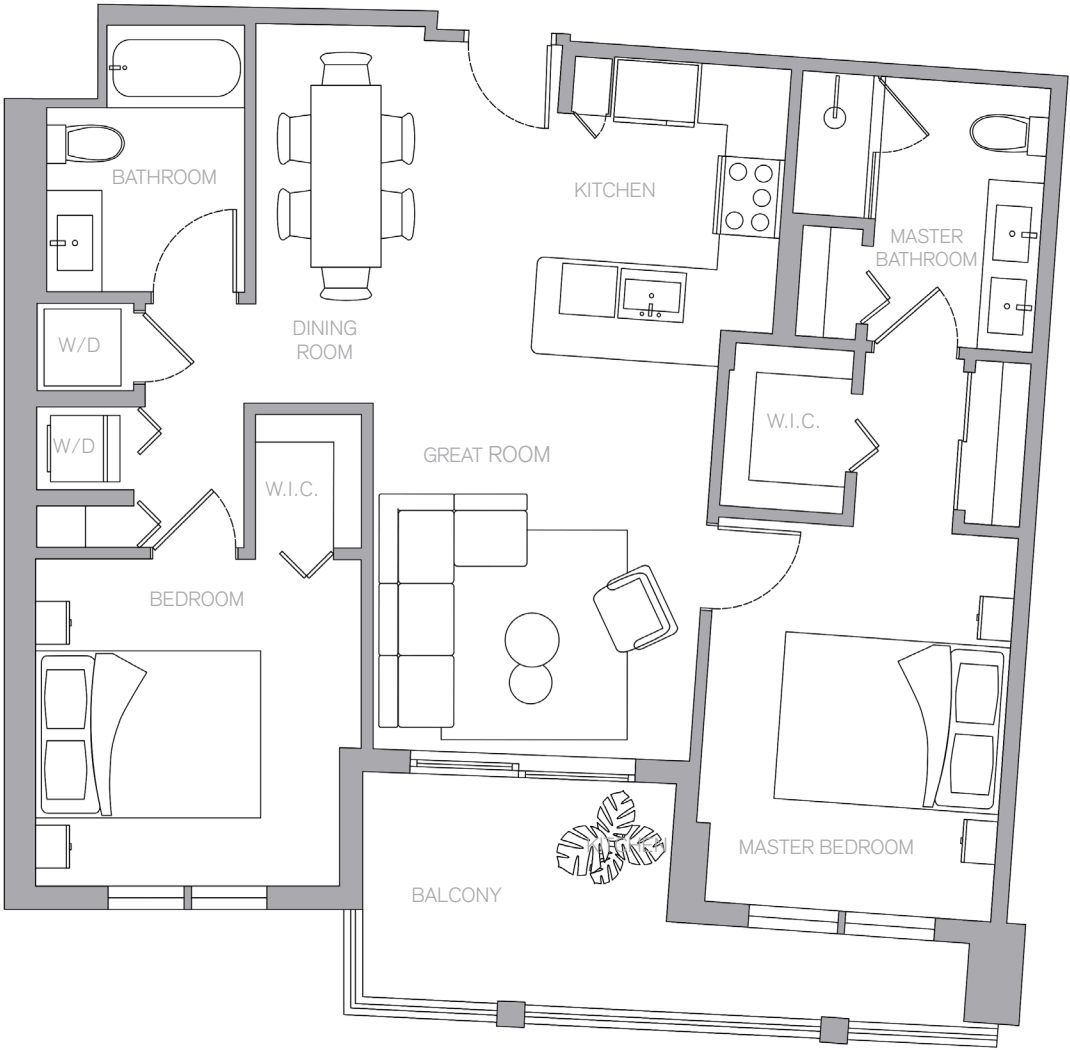
ORAL REPRESENTATIONS CANNOT BE RELIED UPON AS CORRECTLY STATING REPRESENTATIONS OF THE DEVELOPER. FOR CORRECT REPRESENTATIONS, MAKE REFERENCE TO THIS BROCHURE AND TO THE DOCUMENTS REQUIRED BY 718.503, FLORIDA STATUTES, TO BE FURNISHED BY A DEVELOPER TO A BUYER OR LESSEE.



UNIT B4

2 BED | 2 BATH

LIVING	sf
RESIDENCE	1,113 (103.5 m²)



GCF Development, LLC ("GCF") is not the project developer or offeror. This Condominium is being converted and offered by HC Real Property, LLC (the "Developer"). Any and all statements, disclosures and/or representations shall be deemed to be made by Developer and not by GCF and any purchaser agrees to look solely to Developer (and not to GCF and/or any of its affiliates or principals) with respect to any and all matters relating to the marketing and/or development of the Condominium and with respect to the sales of units in the Condominium. The square footage stated herein is approximate. The size and configuration of balconies and terraces and windows varies throughout the building. For the actual size and configuration of the balcony and windows for your unit consult your Offering documents. All depictions of furnishings, appliances, built-ins, counters, and other matters of detail, including, without limitation, items of finish and decoration, are conceptual only and are not necessarily included in each Unit. The furniture layout and the use of space illustrated are suggested uses only and not intended to guaranty any specific use of space or accommodation of specific furnishings. The furnishings, design features, fixture and decor illustrated are conceptual only and may not be included with a unit purchase. Consult your prospectus and Purchase Agreement to learn what is included with a unit purchase and to review the unit square footage calculation method to be relied upon, which is set forth in the prospectus. This is not intended to be an offer to sell, or solicitation to buy, condominium units to residents of any jurisdiction where prohibited by law, and your eligibility for purchase will depend upon your state of residency. The offering is made only by the prospectus for the condominium and no statement should be relied upon if not made in the prospectus.

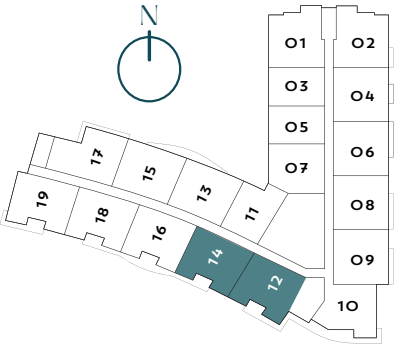
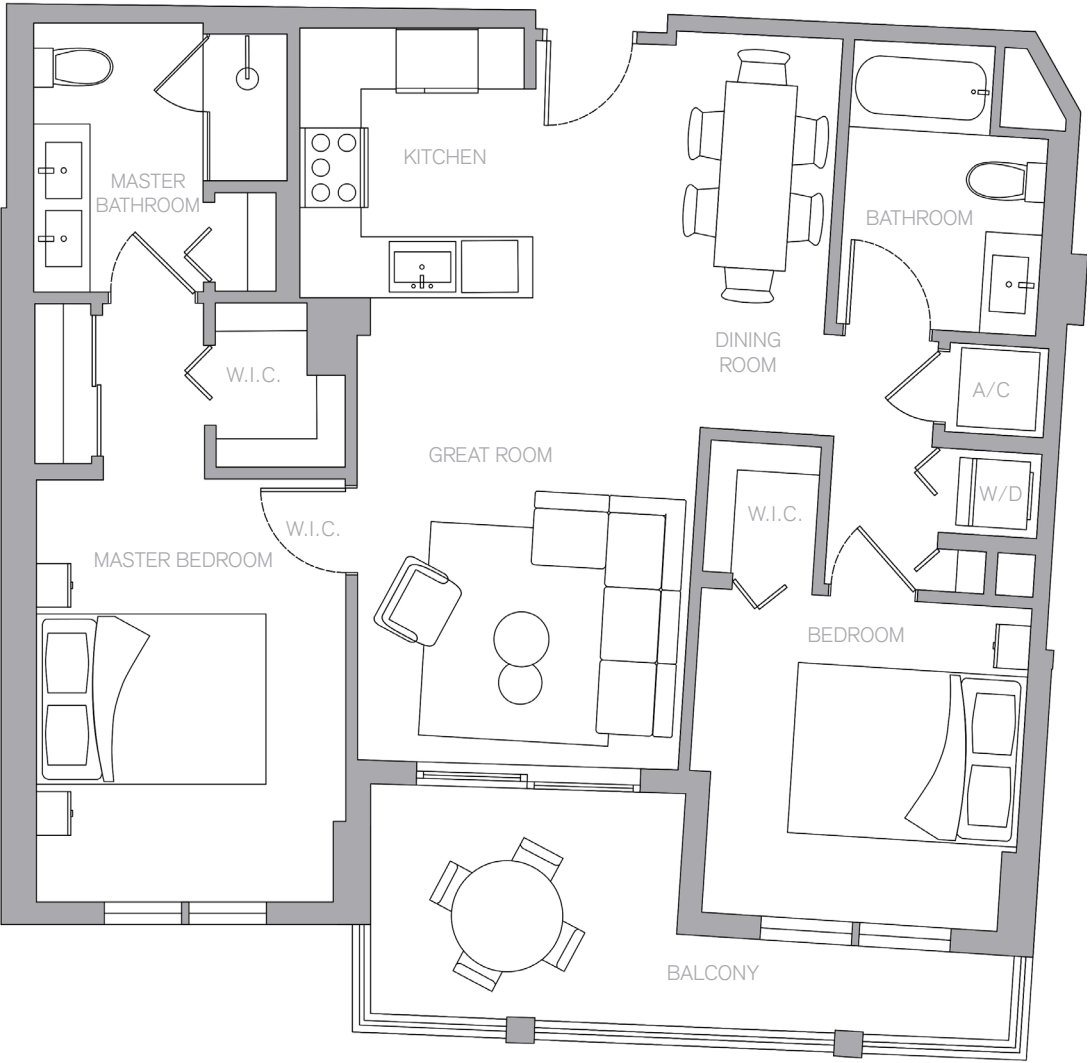
ORAL REPRESENTATIONS CANNOT BE RELIED UPON AS CORRECTLY STATING REPRESENTATIONS OF THE DEVELOPER. FOR CORRECT REPRESENTATIONS, MAKE REFERENCE TO THIS BROCHURE AND TO THE DOCUMENTS REQUIRED BY 718.503, FLORIDA STATUTES, TO BE FURNISHED BY A DEVELOPER TO A BUYER OR LESSEE.



UNIT B5

2 BED | 2 BATH

LIVING	sf
RESIDENCE	1,122 (104 m ²)



GCF Development, LLC ("GCF") is not the project developer or offeror. This Condominium is being converted and offered by HC Real Property, LLC (the "Developer"). Any and all statements, disclosures and/or representations shall be deemed to be made by Developer and not by GCF and any purchaser agrees to look solely to Developer (and not to GCF and/or any of its affiliates or principals) with respect to any and all matters relating to the marketing and/or development of the Condominium and with respect to the sales of units in the Condominium. The square footage stated herein is approximate. The size and configuration of balconies and terraces and windows varies throughout the building. For the actual size and configuration of the balcony and windows for your unit consult your Offering documents. All depictions of furnishings, appliances, built-ins, counters, and other matters of detail, including, without limitation, items of finish and decoration, are conceptual only and are not necessarily included in each Unit. The furniture layout and the use of space illustrated are suggested uses only and not intended to guaranty any specific use of space or accommodation of specific furnishings. The furnishings, design features, fixture and decor illustrated are conceptual only and may not be included with a unit purchase. Consult your prospectus and Purchase Agreement to learn what is included with a unit purchase and to review the unit square footage calculation method to be relied upon, which is set forth in the prospectus. This is not intended to be an offer to sell, or solicitation to buy, condominium units to residents of any jurisdiction where prohibited by law, and your eligibility for purchase will depend upon your state of residency. The offering is made only by the prospectus for the condominium and no statement should be relied upon if not made in the prospectus.

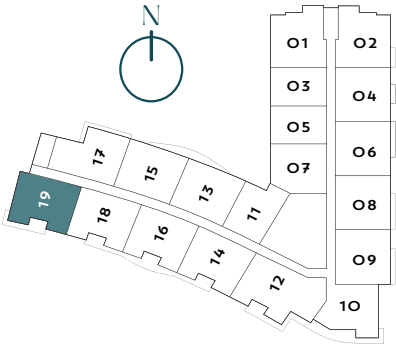
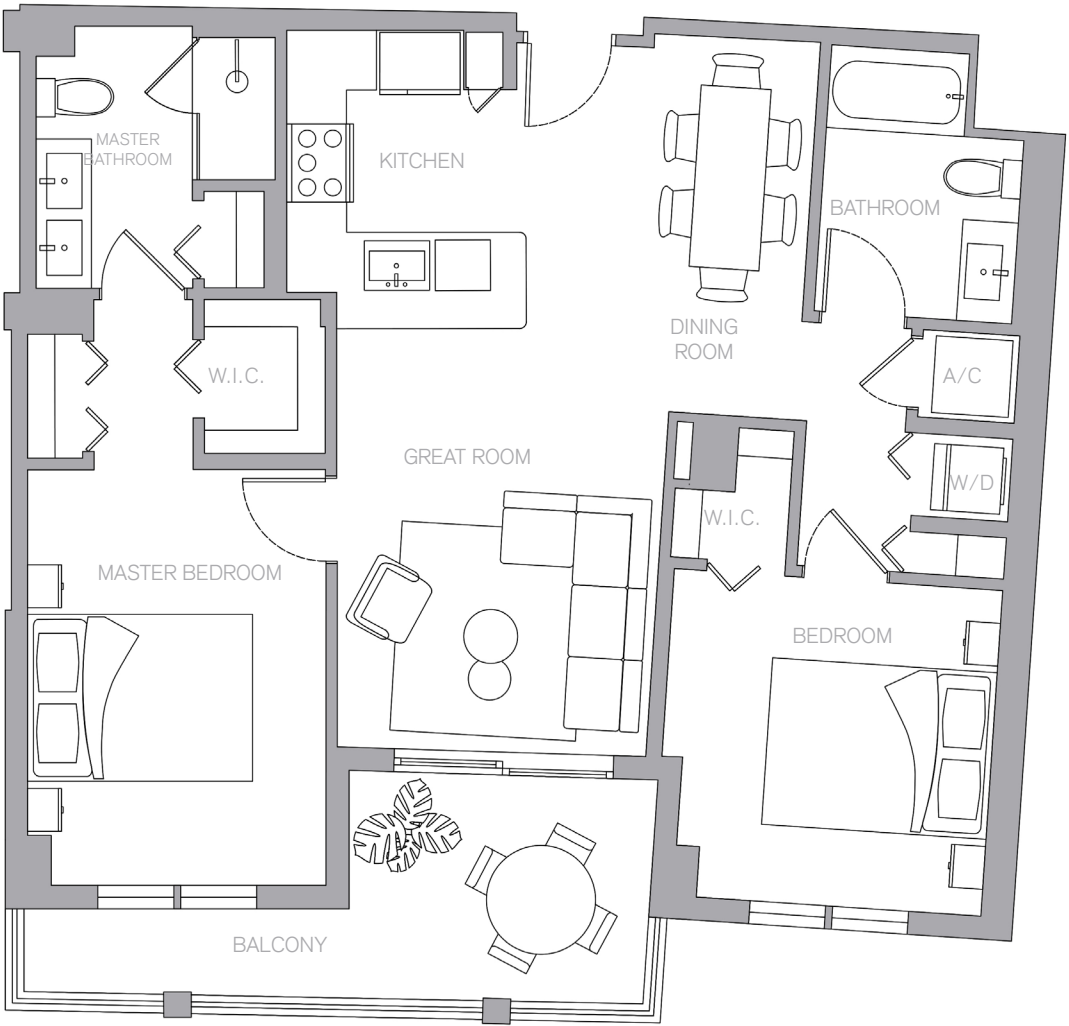
ORAL REPRESENTATIONS CANNOT BE RELIED UPON AS CORRECTLY STATING REPRESENTATIONS OF THE DEVELOPER. FOR CORRECT REPRESENTATIONS, MAKE REFERENCE TO THIS BROCHURE AND TO THE DOCUMENTS REQUIRED BY 718.503, FLORIDA STATUTES, TO BE FURNISHED BY A DEVELOPER TO A BUYER OR LESSEE.



UNIT B6

2 BED | 2 BATH

LIVING	sf
RESIDENCE	1,123 (104.5 m ²)



GCF Development, LLC ("GCF") is not the project developer or offeror. This Condominium is being converted and offered by HC Real Property, LLC (the "Developer"). Any and all statements, disclosures and/or representations shall be deemed to be made by Developer and not by GCF and any purchaser agrees to look solely to Developer (and not to GCF and/or any of its affiliates or principals) with respect to any and all matters relating to the marketing and/or development of the Condominium and with respect to the sales of units in the Condominium. The square footage stated herein is approximate. The size and configuration of balconies and terraces and windows varies throughout the building. For the actual size and configuration of the balcony and windows for your unit consult your Offering documents. All depictions of furnishings, appliances, built-ins, counters, and other matters of detail, including, without limitation, items of finish and decoration, are conceptual only and are not necessarily included in each Unit. The furniture layout and the use of space illustrated are suggested uses only and not intended to guaranty any specific use of space or accommodation of specific furnishings. The furnishings, design features, fixture and decor illustrated are conceptual only and may not be included with a unit purchase. Consult your prospectus and Purchase Agreement to learn what is included with a unit purchase and to review the unit square footage calculation method to be relied upon, which is set forth in the prospectus. This is not intended to be an offer to sell, or solicitation to buy, condominium units to residents of any jurisdiction where prohibited by law, and your eligibility for purchase will depend upon your state of residency. The offering is made only by the prospectus for the condominium and no statement should be relied upon if not made in the prospectus.

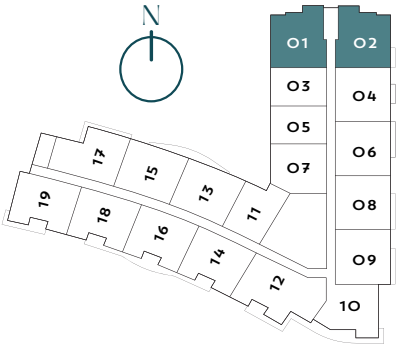
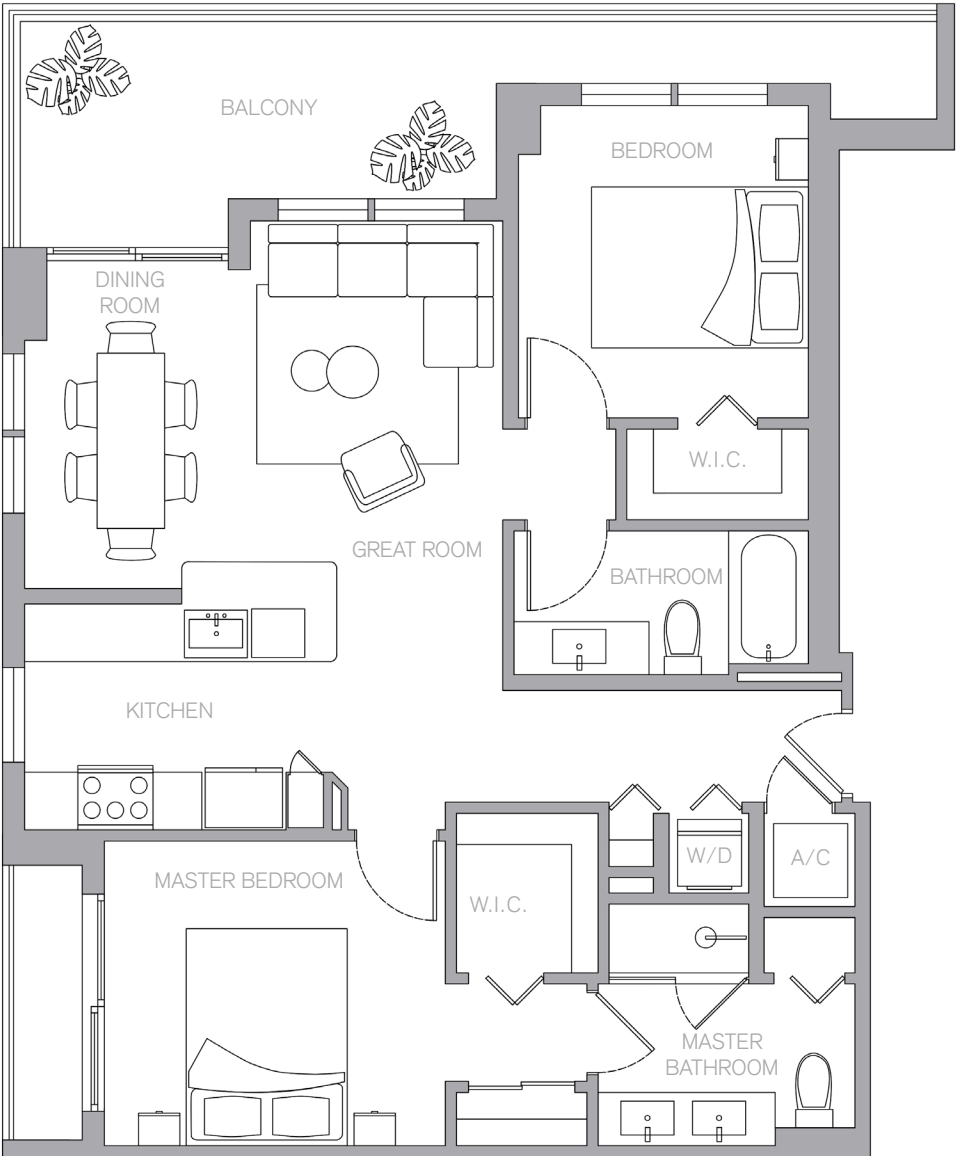
ORAL REPRESENTATIONS CANNOT BE RELIED UPON AS CORRECTLY STATING REPRESENTATIONS OF THE DEVELOPER. FOR CORRECT REPRESENTATIONS, MAKE REFERENCE TO THIS BROCHURE AND TO THE DOCUMENTS REQUIRED BY 718.503, FLORIDA STATUTES, TO BE FURNISHED BY A DEVELOPER TO A BUYER OR LESSEE.



UNIT B7

2 BED | 2 BATH

LIVING	sf
RESIDENCE	1,137 (106 m ²)



GCF Development, LLC ("GCF") is not the project developer or offeror. This Condominium is being converted and offered by HC Real Property, LLC (the "Developer"). Any and all statements, disclosures and/or representations shall be deemed to be made by Developer and not by GCF and any purchaser agrees to look solely to Developer (and not to GCF and/or any of its affiliates or principals) with respect to any and all matters relating to the marketing and/or development of the Condominium and with respect to the sales of units in the Condominium. The square footage stated herein is approximate. The size and configuration of balconies and terraces and windows varies throughout the building. For the actual size and configuration of the balcony and windows for your unit consult your Offering documents. All depictions of furnishings, appliances, built-ins, counters, and other matters of detail, including, without limitation, items of finish and decoration, are conceptual only and are not necessarily included in each Unit. The furniture layout and the use of space illustrated are suggested uses only and not intended to guaranty any specific use of space or accommodation of specific furnishings. The furnishings, design features, fixture and decor illustrated are conceptual only and may not be included with a unit purchase. Consult your prospectus and Purchase Agreement to learn what is included with a unit purchase and to review the unit square footage calculation method to be relied upon, which is set forth in the prospectus. This is not intended to be an offer to sell, or solicitation to buy, condominium units to residents of any jurisdiction where prohibited by law, and your eligibility for purchase will depend upon your state of residency. The offering is made only by the prospectus for the condominium and no statement should be relied upon if not made in the prospectus.

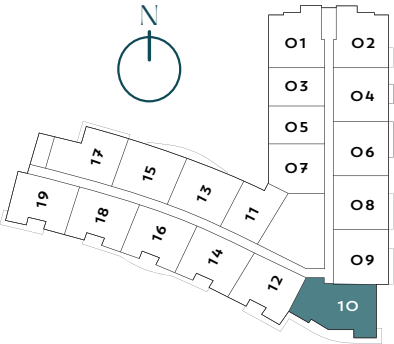
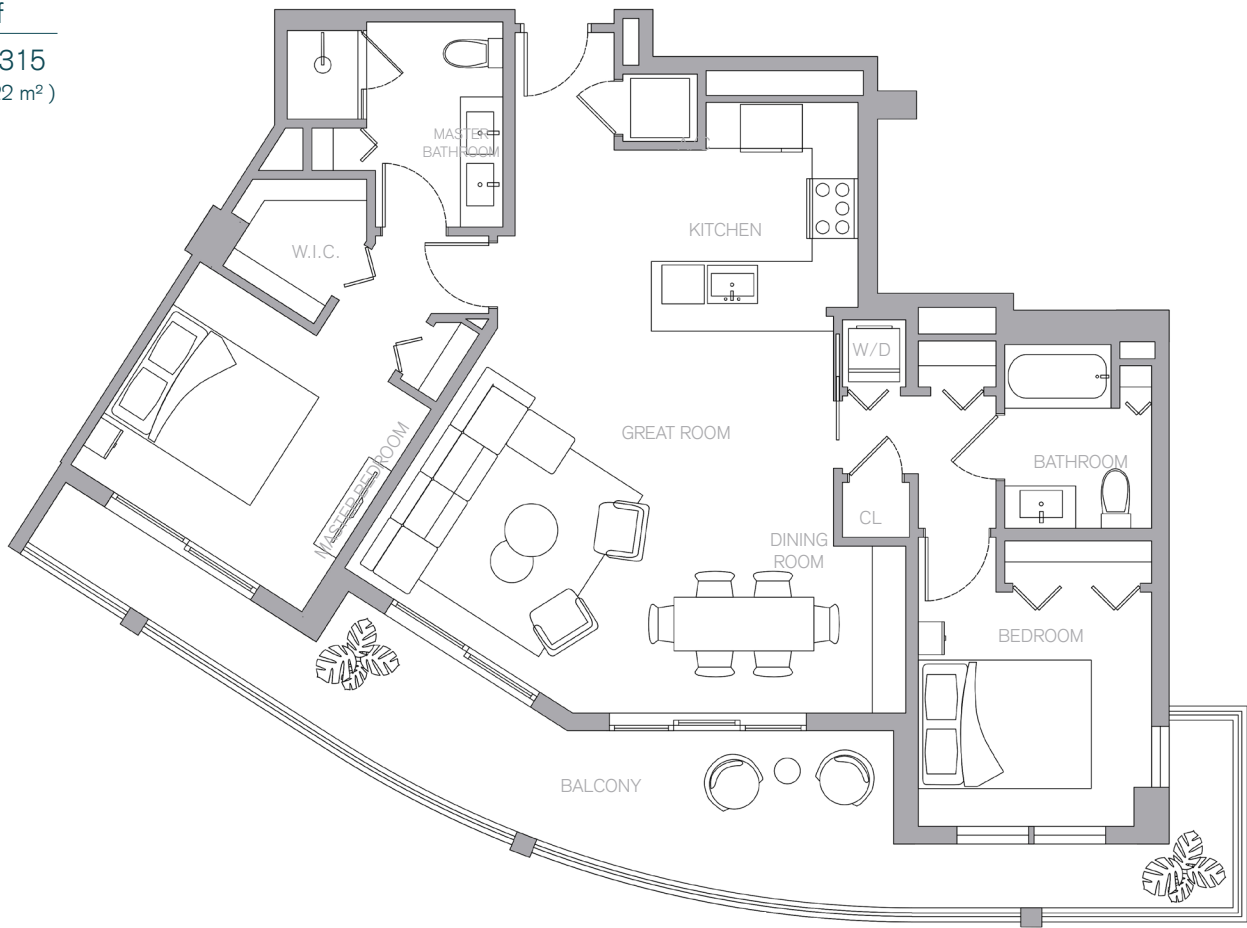
ORAL REPRESENTATIONS CANNOT BE RELIED UPON AS CORRECTLY STATING REPRESENTATIONS OF THE DEVELOPER. FOR CORRECT REPRESENTATIONS, MAKE REFERENCE TO THIS BROCHURE AND TO THE DOCUMENTS REQUIRED BY 718.503, FLORIDA STATUTES, TO BE FURNISHED BY A DEVELOPER TO A BUYER OR LESSEE.



UNIT B8

2 BED | 2 BATH

LIVING	sf
RESIDENCE	1,315 (122 m ²)



GCF Development, LLC ("GCF") is not the project developer or offeror. This Condominium is being converted and offered by HC Real Property, LLC (the "Developer"). Any and all statements, disclosures and/or representations shall be deemed to be made by Developer and not by GCF and any purchaser agrees to look solely to Developer (and not to GCF and/or any of its affiliates or principals) with respect to any and all matters relating to the marketing and/or development of the Condominium and with respect to the sales of units in the Condominium. The square footage stated herein is approximate. The size and configuration of balconies and terraces and windows varies throughout the building. For the actual size and configuration of the balcony and windows for your unit consult your Offering documents. All depictions of furnishings, appliances, built-ins, counters, and other matters of detail, including, without limitation, items of finish and decoration, are conceptual only and are not necessarily included in each Unit. The furniture layout and the use of space illustrated are suggested uses only and not intended to guaranty any specific use of space or accommodation of specific furnishings. The furnishings, design features, fixture and decor illustrated are conceptual only and may not be included with a unit purchase. Consult your prospectus and Purchase Agreement to learn what is included with a unit purchase and to review the unit square footage calculation method to be relied upon, which is set forth in the prospectus. This is not intended to be an offer to sell, or solicitation to buy, condominium units to residents of any jurisdiction where prohibited by law, and your eligibility for purchase will depend upon your state of residency. The offering is made only by the prospectus for the condominium and no statement should be relied upon if not made in the prospectus.

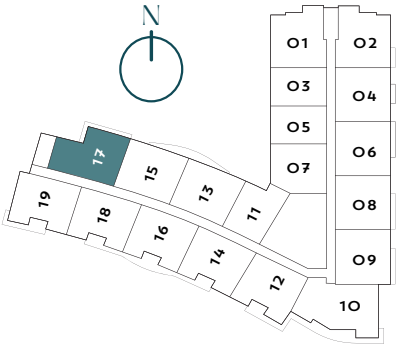
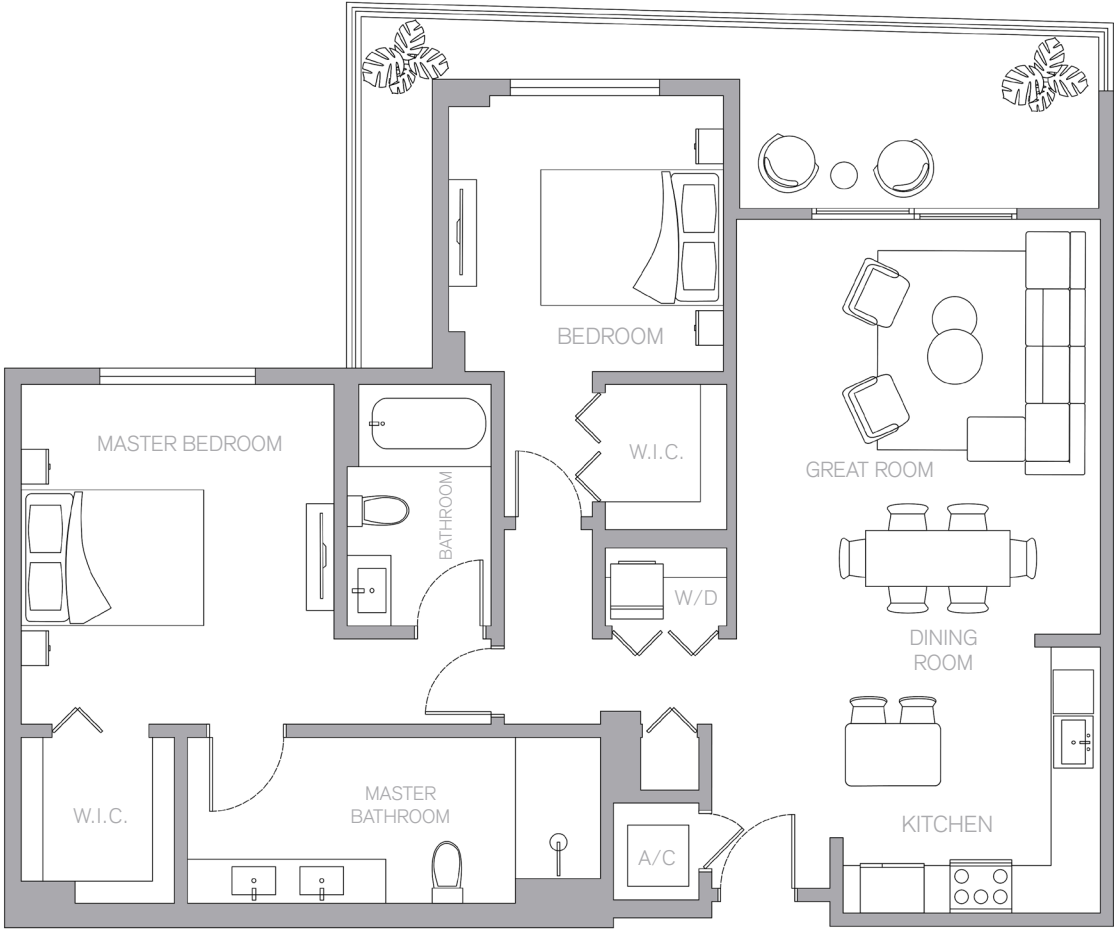
ORAL REPRESENTATIONS CANNOT BE RELIED UPON AS CORRECTLY STATING REPRESENTATIONS OF THE DEVELOPER. FOR CORRECT REPRESENTATIONS, MAKE REFERENCE TO THIS BROCHURE AND TO THE DOCUMENTS REQUIRED BY 718.503, FLORIDA STATUTES, TO BE FURNISHED BY A DEVELOPER TO A BUYER OR LESSEE.



UNIT B9

2 BED | 2 BATH

LIVING	sf
RESIDENCE	1,167 (109 m ²)



GCF Development, LLC ("GCF") is not the project developer or offeror. This Condominium is being converted and offered by HC Real Property, LLC (the "Developer"). Any and all statements, disclosures and/or representations shall be deemed to be made by Developer and not by GCF and any purchaser agrees to look solely to Developer (and not to GCF and/or any of its affiliates or principals) with respect to any and all matters relating to the marketing and/or development of the Condominium and with respect to the sales of units in the Condominium. The square footage stated herein is approximate. The size and configuration of balconies and terraces and windows varies throughout the building. For the actual size and configuration of the balcony and windows for your unit consult your Offering documents. All depictions of furnishings, appliances, built-ins, counters, and other matters of detail, including, without limitation, items of finish and decoration, are conceptual only and are not necessarily included in each Unit. The furniture layout and the use of space illustrated are suggested uses only and not intended to guaranty any specific use of space or accommodation of specific furnishings. The furnishings, design features, fixture and decor illustrated are conceptual only and may not be included with a unit purchase. Consult your prospectus and Purchase Agreement to learn what is included with a unit purchase and to review the unit square footage calculation method to be relied upon, which is set forth in the prospectus. This is not intended to be an offer to sell, or solicitation to buy, condominium units to residents of any jurisdiction where prohibited by law, and your eligibility for purchase will depend upon your state of residency. The offering is made only by the prospectus for the condominium and no statement should be relied upon if not made in the prospectus.

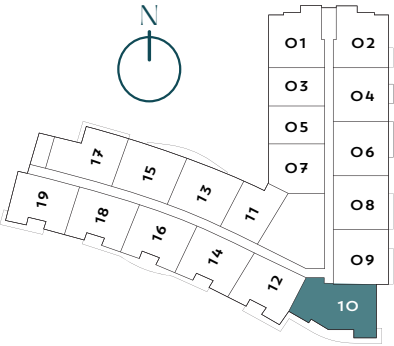
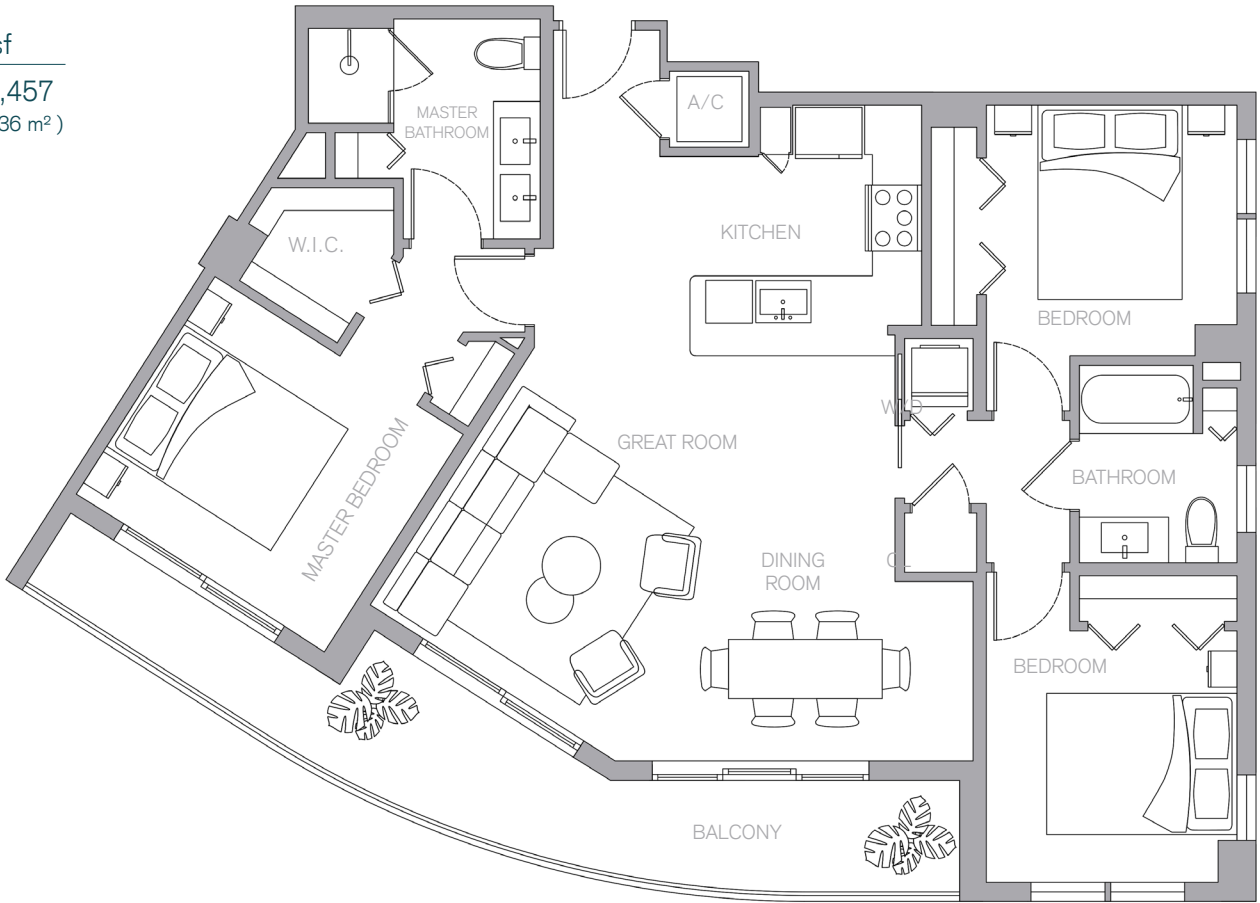
ORAL REPRESENTATIONS CANNOT BE RELIED UPON AS CORRECTLY STATING REPRESENTATIONS OF THE DEVELOPER. FOR CORRECT REPRESENTATIONS, MAKE REFERENCE TO THIS BROCHURE AND TO THE DOCUMENTS REQUIRED BY 718.503, FLORIDA STATUTES, TO BE FURNISHED BY A DEVELOPER TO A BUYER OR LESSEE.



UNIT C1

3 BED | 2 BATH

LIVING	sf
RESIDENCE	1,457 (136 m ²)



GCF Development, LLC ("GCF") is not the project developer or offeror. This Condominium is being converted and offered by HC Real Property, LLC (the "Developer"). Any and all statements, disclosures and/or representations shall be deemed to be made by Developer and not by GCF and any purchaser agrees to look solely to Developer (and not to GCF and/or any of its affiliates or principals) with respect to any and all matters relating to the marketing and/or development of the Condominium and with respect to the sales of units in the Condominium. The square footage stated herein is approximate. The size and configuration of balconies and terraces and windows varies throughout the building. For the actual size and configuration of the balcony and windows for your unit consult your Offering documents. All depictions of furnishings, appliances, built-ins, counters, and other matters of detail, including, without limitation, items of finish and decoration, are conceptual only and are not necessarily included in each Unit. The furniture layout and the use of space illustrated are suggested uses only and not intended to guaranty any specific use of space or accommodation of specific furnishings. The furnishings, design features, fixture and decor illustrated are conceptual only and may not be included with a unit purchase. Consult your prospectus and Purchase Agreement to learn what is included with a unit purchase and to review the unit square footage calculation method to be relied upon, which is set forth in the prospectus. This is not intended to be an offer to sell, or solicitation to buy, condominium units to residents of any jurisdiction where prohibited by law, and your eligibility for purchase will depend upon your state of residency. The offering is made only by the prospectus for the condominium and no statement should be relied upon if not made in the prospectus.

ORAL REPRESENTATIONS CANNOT BE RELIED UPON AS CORRECTLY STATING REPRESENTATIONS OF THE DEVELOPER. FOR CORRECT REPRESENTATIONS, MAKE REFERENCE TO THIS BROCHURE AND TO THE DOCUMENTS REQUIRED BY 718.503, FLORIDA STATUTES, TO BE FURNISHED BY A DEVELOPER TO A BUYER OR LESSEE.

