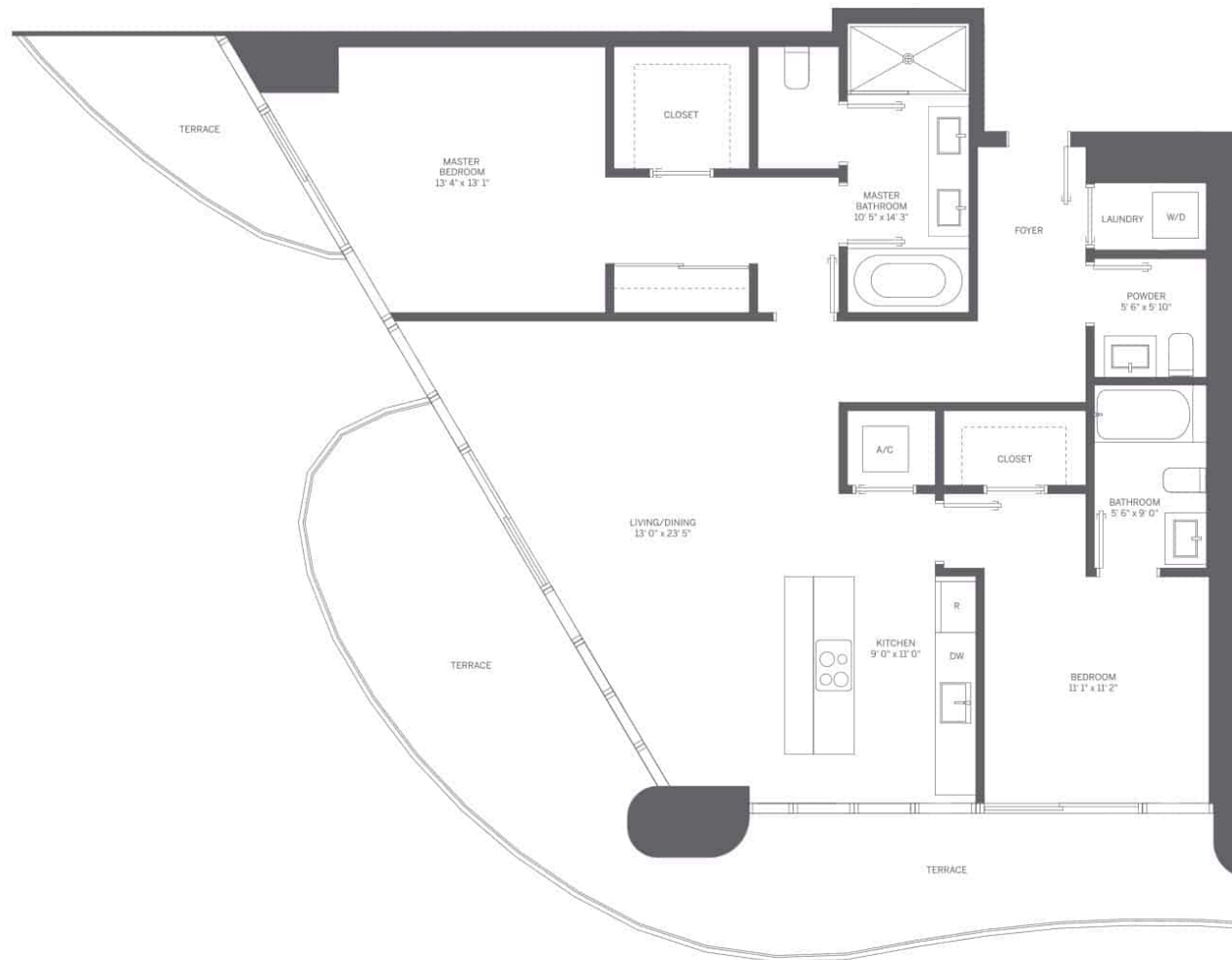
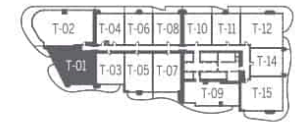


N



## TOWER UNIT 01 2 BEDROOM / 2.5 BATH

INTERIOR: 1,401 SF / 130 m<sup>2</sup>    TERRACE: 474 SF / 44 m<sup>2</sup>    TOTAL: 1,875 SF / 174 m<sup>2</sup>

SCALE: 1/4" = 1'

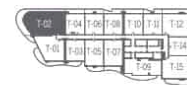


Stated dimensions are measured to the exterior boundaries of the exterior walls and the centerline of interior demising walls and in fact vary from the dimensions that would be determined by using the description and definition of the "Unit" set forth in the Declaration (which generally only includes the interior airspace between the perimeter walls and excludes interior structural components). For your reference, the area of the Unit, determined in accordance with those defined unit boundaries, is 1,301 SF. Note that measurements of rooms set forth on this floor plan are generally taken at the greatest points of each given room (as if the room were a perfect rectangle), without regard for any cutouts. Accordingly, the area of the actual room will typically be smaller than the product obtained by multiplying the stated length times width. All dimensions are approximate and may vary with actual construction, and all Floor plans and development plans are subject to change.



BRICKELL FLATIRON

N▶



TOWER UNIT 02 3 BEDROOM / 3.5 BATH

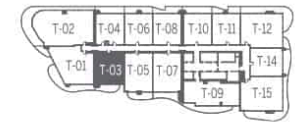
INTERIOR: 2,025 SF / 188 m<sup>2</sup>    TERRACE: 628 SF / 58 m<sup>2</sup>    TOTAL: 2,653 SF / 246 m<sup>2</sup>

SCALE: 1/4" = 1'



BRICKELL FLATIRON

N



Note: Terrace: 140 SF / 13 m<sup>2</sup> on Odd Floors  
Terrace: 211 SF / 20 m<sup>2</sup> on Even Floors

## TOWER UNIT 03 1 BEDROOM / 1.5 BATH

INTERIOR: 901 SF / 84 m<sup>2</sup>    TERRACE: 140 SF / 13 m<sup>2</sup>    TOTAL: 1,041 SF / 97 m<sup>2</sup>

SCALE: 1/4" = 1'

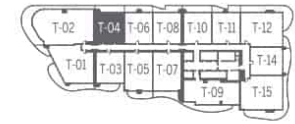


Stated dimensions are measured to the exterior boundaries of the exterior walls and the centerline of interior demising walls and in fact vary from the dimensions that would be determined by using the description and definition of the "Unit" set forth in the Declaration (which generally only includes the interior airspace between the perimeter walls and excludes interior structural components). For your reference, the area of the Unit, determined in accordance with those defined unit boundaries, is 838 SF. Note that measurements of rooms set forth on this floor plan are generally taken at the greatest points of each given room (as if the room were a perfect rectangle), without regard for any cutouts. Accordingly, the area of the actual room will typically be smaller than the product obtained by multiplying the stated length times width. All dimensions are approximate and may vary with actual construction, and all floor plans and development plans are subject to change.



BRICKELL FLATIRON

N



## TOWER UNIT 04 1 BEDROOM / 1 BATH

INTERIOR: 737 SF / 68 m²      TERRACE: 178 SF / 17 m²      TOTAL: 915 SF / 84 m²

SCALE: 1/4" = 1'

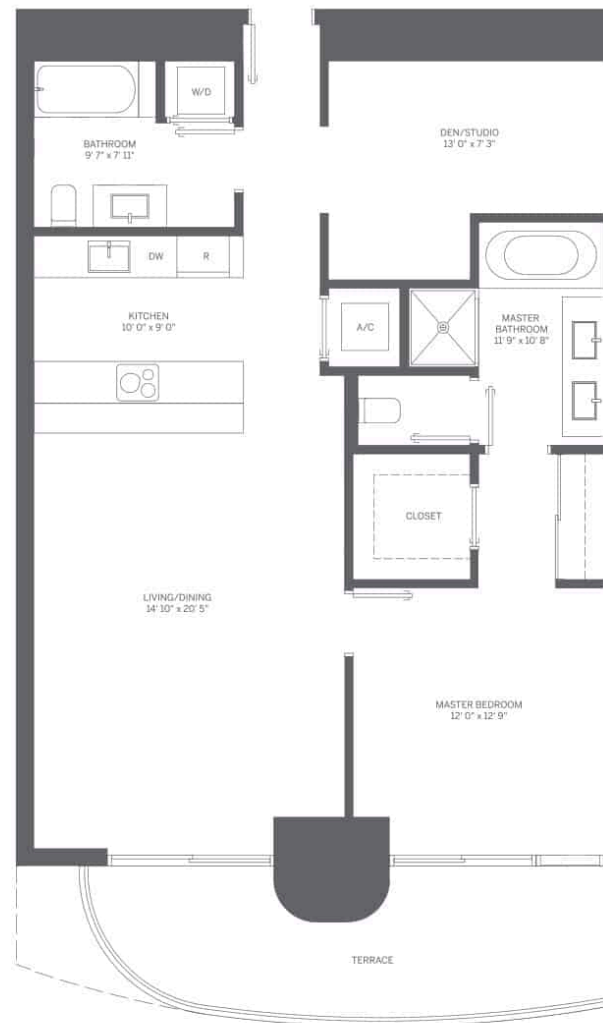
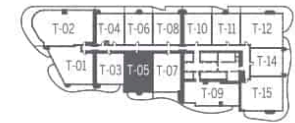


Stated dimensions are measured to the exterior boundaries of the exterior walls and the centerline of interior demising walls and in fact vary from the dimensions that would be determined by using the description and definition of the "Unit" set forth in the Declaration (which generally only includes the interior airspace between the perimeter walls and excludes interior structural components). For your reference, the area of the Unit, determined in accordance with those defined unit boundaries, is 672 SF. Note that measurements of rooms set forth on this floor plan are generally taken at the greatest points of each given room (as if the room were a perfect rectangle), without regard for any cutouts. Accordingly, the area of the actual room will typically be smaller than the product obtained by multiplying the stated length times width. All dimensions are approximate and may vary with actual construction, and all Floor plans and development plans are subject to change.



BRICKELL FLATIRON

N



Note: Terrace: 163 SF / 15 m<sup>2</sup> on Odd Floors  
Terrace: 184 SF / 17 m<sup>2</sup> on Even Floors

## TOWER UNIT 05 1 BEDROOM + DEN / 2 BATH

INTERIOR: 1,107 SF / 103 m<sup>2</sup> TERRACE: 163 SF / 15 m<sup>2</sup> TOTAL: 1,270 SF / 118 m<sup>2</sup>

SCALE: 1/4" = 1'

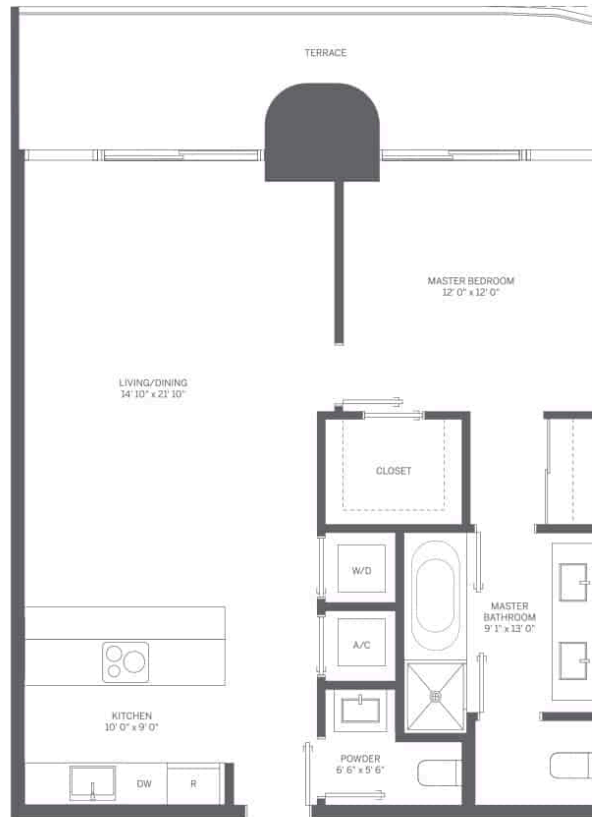


Stated dimensions are measured to the exterior boundaries of the exterior walls and the centerline of interior demising walls and in fact vary from the dimensions that would be determined by using the description and definition of the "Unit" set forth in the Declaration (which generally only includes the interior airspace between the perimeter walls and excludes interior structural components). For your reference, the area of the Unit, determined in accordance with those defined unit boundaries, is 1,026 SF. Note that measurements of rooms set forth on this floor plan are generally taken at the greatest points of each given room (as if the room were a perfect rectangle), without regard for any cutouts. Accordingly, the area of the actual room will typically be smaller than the product obtained by multiplying the stated length times width. All dimensions are approximate and may vary with actual construction, and all floor plans and development plans are subject to change.



BRICKELL FLATIRON

N



## TOWER UNIT 06 1 BEDROOM / 1.5 BATH

INTERIOR: 898 SF / 83 m<sup>2</sup>      TERRACE: 168 SF / 16 m<sup>2</sup>      TOTAL: 1,066 SF / 99 m<sup>2</sup>

SCALE: 1/4" = 1'



Stated dimensions are measured to the exterior boundaries of the exterior walls and the centerline of interior demising walls and in fact vary from the dimensions that would be determined by using the description and definition of the "Unit" set forth in the Declaration (which generally only includes the interior airspace between the perimeter walls and excludes interior structural components). For your reference, the area of the Unit, determined in accordance with those defined unit boundaries, is 829 SF. Note that measurements of rooms set forth on this floor plan are generally taken at the greatest points of each given room (as if the room were a perfect rectangle), without regard for any cutouts. Accordingly, the area of the actual room will typically be smaller than the product obtained by multiplying the stated length times width. All dimensions are approximate and may vary with actual construction, and all Floor plans and development plans are subject to change.



BRICKELL FLATIRON

N



## TOWER UNIT 07 1 BEDROOM + DEN / 2 BATH

INTERIOR: 1,107 SF / 103 m<sup>2</sup> TERRACE: 171 SF / 16 m<sup>2</sup> TOTAL: 1,278 SF / 119 m<sup>2</sup>

SCALE: 1/4" = 1'



Stated dimensions are measured to the exterior boundaries of the exterior walls and the centerline of interior demising walls and in fact vary from the dimensions that would be determined by using the description and definition of the "Unit" set forth in the Declaration (which generally only includes the interior airspace between the perimeter walls and excludes interior structural components). For your reference, the area of the Unit, determined in accordance with those defined unit boundaries, is 1,037 SF. Note that measurements of rooms set forth on this floor plan are generally taken at the greatest points of each given room (as if the room were a perfect rectangle), without regard for any cutouts. Accordingly, the area of the actual room will typically be smaller than the product obtained by multiplying the stated length times width. All dimensions are approximate and may vary with actual construction, and all Floor plans and development plans are subject to change.



BRICKELL FLATIRON

N



Note: Terrace: 183 SF / 17 m<sup>2</sup> on Odd Floors  
Terrace: 153 SF / 14 m<sup>2</sup> on Even Floors



## TOWER UNIT 08 1 BEDROOM / 1.5 BATH

INTERIOR: 906 SF / 84 m<sup>2</sup>    TERRACE: 153 SF / 14 m<sup>2</sup>    TOTAL: 1,059 SF / 98 m<sup>2</sup>

SCALE: 1/4" = 1'



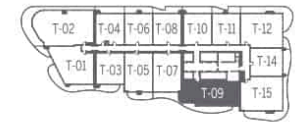
Stated dimensions are measured to the exterior boundaries of the exterior walls and the centerline of interior demising walls and in fact vary from the dimensions that would be determined by using the description and definition of the "Unit" set forth in the Declaration (which generally only includes the interior airspace between the perimeter walls and excludes interior structural components). For your reference, the area of the Unit, determined in accordance with those defined unit boundaries, is 839 SF. Note that measurements of rooms set forth on this floor plan are generally taken at the greatest points of each given room (as if the room were a perfect rectangle), without regard for any cutouts. Accordingly, the area of the actual room will typically be smaller than the product obtained by multiplying the stated length times width. All dimensions are approximate and may vary with actual construction, and all Floor plans and development plans are subject to change.



BRICKELL FLATIRON



N



## TOWER UNIT 09 2 BEDROOM / 2.5 BATH

INTERIOR: 1,369 SF / 127 m<sup>2</sup>    TERRACE: 288 SF / 27 m<sup>2</sup>    TOTAL: 1,657 SF / 154 m<sup>2</sup>

SCALE: 1/4" = 1'

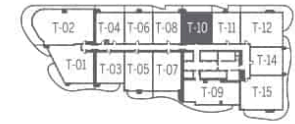


Stated dimensions are measured to the exterior boundaries of the exterior walls and the centerline of interior demising walls and in fact vary from the dimensions that would be determined by using the description and definition of the "Unit" set forth in the Declaration (which generally only includes the interior airspace between the perimeter walls and excludes interior structural components). For your reference, the area of the Unit, determined in accordance with those defined unit boundaries, is 1,253 SF. Note that measurements of rooms set forth on this floor plan are generally taken at the greatest points of each given room (as if the room were a perfect rectangle), without regard for any cutouts. Accordingly, the area of the actual room will typically be smaller than the product obtained by multiplying the stated length times width. All dimensions are approximate and may vary with actual construction, and all Floor plans and development plans are subject to change.



BRICKELL FLATIRON

N



## TOWER UNIT 10 1 BEDROOM / 1.5 BATH

INTERIOR: 906 SF / 84 m<sup>2</sup>    TERRACE: 182 SF / 17 m<sup>2</sup>    TOTAL: 1,088 SF / 101 m<sup>2</sup>

SCALE: 1/4" = 1'

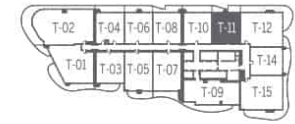


Stated dimensions are measured to the exterior boundaries of the exterior walls and the centerline of interior demising walls and in fact vary from the dimensions that would be determined by using the description and definition of the "Unit" set forth in the Declaration (which generally only includes the interior airspace between the perimeter walls and excludes interior structural components). For your reference, the area of the Unit, determined in accordance with those defined unit boundaries, is 839 SF. Note that measurements of rooms set forth on this floor plan are generally taken at the greatest points of each given room (as if the room were a perfect rectangle), without regard for any cutouts. Accordingly, the area of the actual room will typically be smaller than the product obtained by multiplying the stated length times width. All dimensions are approximate and may vary with actual construction, and all Floor plans and development plans are subject to change.

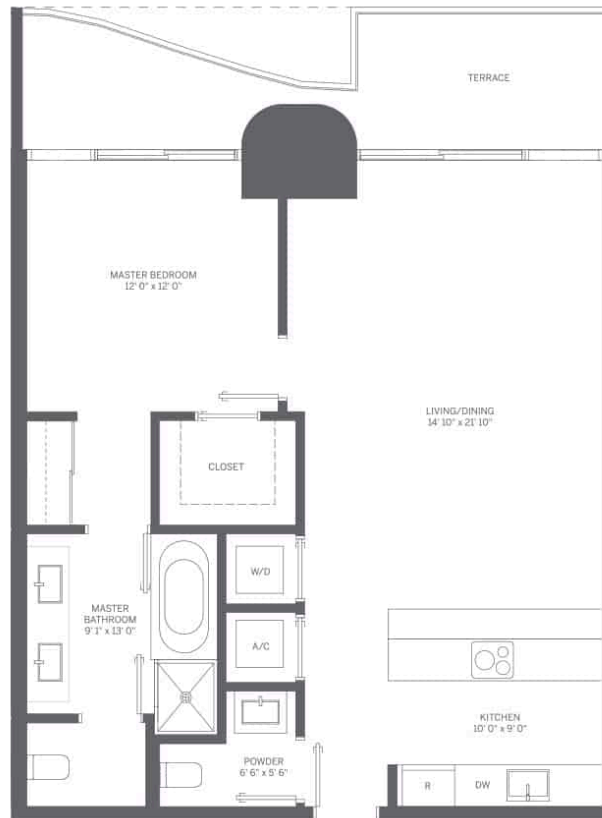


BRICKELL FLATIRON

N



Note: Terrace: 175 SF / 16 m<sup>2</sup> on Odd Floors  
Terrace: 145 SF / 13 m<sup>2</sup> on Even Floors



## TOWER UNIT 11 1 BEDROOM / 1.5 BATH

INTERIOR: 906 SF / 84 m<sup>2</sup>    TERRACE: 145 SF / 13 m<sup>2</sup>    TOTAL: 1,051 SF / 97 m<sup>2</sup>

SCALE: 1/4" = 1'

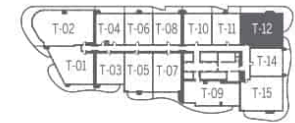


Stated dimensions are measured to the exterior boundaries of the exterior walls and the centerline of interior demising walls and in fact vary from the dimensions that would be determined by using the description and definition of the "Unit" set forth in the Declaration (which generally only includes the interior airspace between the perimeter walls and excludes interior structural components). For your reference, the area of the Unit, determined in accordance with those defined unit boundaries, is 836 SF. Note that measurements of rooms set forth on this floor plan are generally taken at the greatest points of each given room (as if the room were a perfect rectangle), without regard for any cutouts. Accordingly, the area of the actual room will typically be smaller than the product obtained by multiplying the stated length times width. All dimensions are approximate and may vary with actual construction, and all Floor plans and development plans are subject to change.



BRICKELL FLATIRON

N



## TOWER UNIT 12 2 BEDROOM + DEN / 2.5 BATH

INTERIOR: 1,446 SF / 134 m<sup>2</sup> TERRACE: 506 SF / 47 m<sup>2</sup> TOTAL: 1,952 SF / 181 m<sup>2</sup>

SCALE: 1/4" = 1'

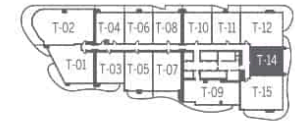


Stated dimensions are measured to the exterior boundaries of the exterior walls and the centerline of interior demising walls and in fact vary from the dimensions that would be determined by using the description and definition of the "Unit" set forth in the Declaration (which generally only includes the interior airspace between the perimeter walls and excludes interior structural components). For your reference, the area of the Unit, determined in accordance with those defined unit boundaries, is 1,368 SF. Note that measurements of rooms set forth on this floor plan are generally taken at the greatest points of each given room (as if the room were a perfect rectangle), without regard for any cutouts. Accordingly, the area of the actual room will typically be smaller than the product obtained by multiplying the stated length times width. All dimensions are approximate and may vary with actual construction, and all Floor plans and development plans are subject to change.



BRICKELL FLATIRON

N



## TOWER UNIT 14 1 BEDROOM / 1.5 BATH

INTERIOR: 933 SF / 87 m<sup>2</sup>    TERRACE: 174 SF / 16 m<sup>2</sup>    TOTAL: 1,107 SF / 103 m<sup>2</sup>

SCALE: 1/4" = 1'

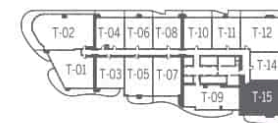


Stated dimensions are measured to the exterior boundaries of the exterior walls and the centerline of interior demising walls and in fact vary from the dimensions that would be determined by using the description and definition of the "Unit" set forth in the Declaration (which generally only includes the interior airspace between the perimeter walls and excludes interior structural components). For your reference, the area of the Unit, determined in accordance with those defined unit boundaries, is 863 SF. Note that measurements of rooms set forth on this floor plan are generally taken at the greatest points of each given room (as if the room were a perfect rectangle), without regard for any cutouts. Accordingly, the area of the actual room will typically be smaller than the product obtained by multiplying the stated length times width. All dimensions are approximate and may vary with actual construction, and all Floor plans and development plans are subject to change.



BRICKELL FLATIRON

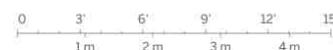
N



## TOWER UNIT 15 2 BEDROOM + DEN / 2.5 BATH

INTERIOR: 1,446 SF / 134 m<sup>2</sup>    TERRACE: 438 SF / 41 m<sup>2</sup>    TOTAL: 1,884 SF / 175 m<sup>2</sup>

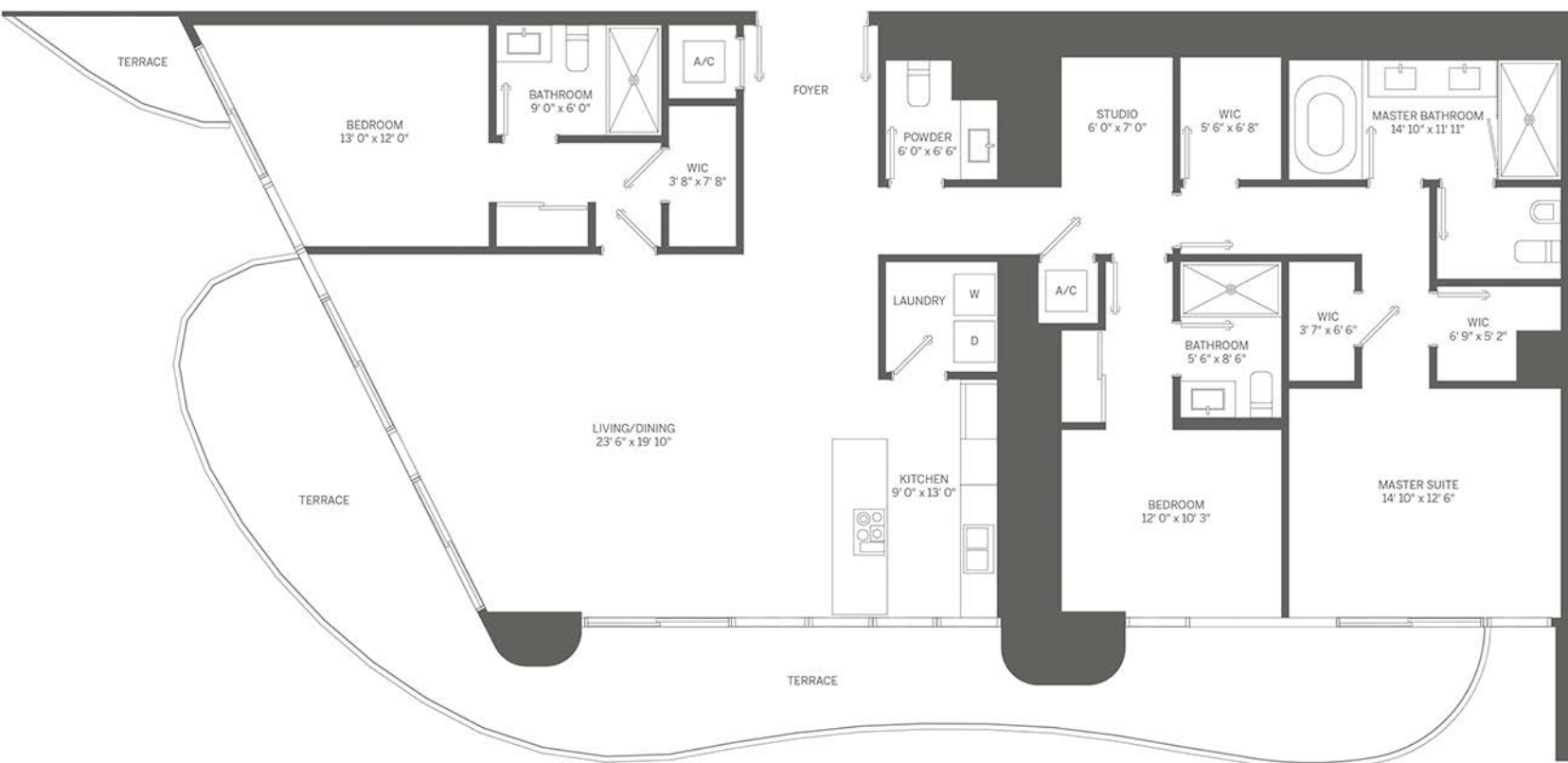
SCALE: 1/4" = 1'



Stated dimensions are measured to the exterior boundaries of the exterior walls and the centerline of interior demising walls and in fact vary from the dimensions that would be determined by using the description and definition of the "Unit" set forth in the Declaration (which generally only includes the interior airspace between the perimeter walls and excludes interior structural components). For your reference, the area of the Unit, determined in accordance with those defined unit boundaries, is 1,359 SF. Note that measurements of rooms set forth on this floor plan are generally taken at the greatest points of each given room (as if the room were a perfect rectangle), without regard for any cutouts. Accordingly, the area of the actual room will typically be smaller than the product obtained by multiplying the stated length times width. All dimensions are approximate and may vary with actual construction, and all Floor plans and development plans are subject to change.



BRICKELL FLATIRON



BRICKELL FLATIRON





## PENTHOUSE 02

3 BEDROOM / 2.5 BATH

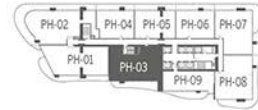
INTERIOR: 2,314 SF / 215 m<sup>2</sup> TERRACE: 950 SF / 88 m<sup>2</sup> TOTAL: 3,264 SF / 303 m<sup>2</sup>



BRICKELL FLATIRON







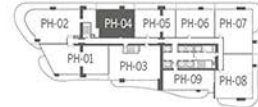
## PENTHOUSE 03

3 BEDROOM + DEN / 3.5 BATH

INTERIOR: 2,203 SF / 205 m<sup>2</sup> TERRACE: 335 SF / 31 m<sup>2</sup> TOTAL: 2,538 SF / 236 m<sup>2</sup>



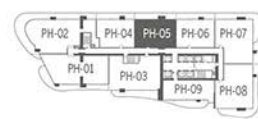
Stated dimensions are measured to the exterior boundaries of the exterior walls and the centerline of interior demising walls and in fact vary from the dimensions that would be determined by using the description and definition of the "Unit" set forth in the Declaration (which generally only includes the interior airspace between the perimeter walls and excludes interior structural components). For your reference, the area of the Unit, determined in accordance with those defined unit boundaries, is 2,203 SF. Note that measurements of rooms set forth on this floor plan are generally taken at the greatest points of each given room (as if the room were a perfect rectangle), without regard for any cutouts. Accordingly, the area of the actual room will typically be smaller than the product obtained by multiplying the stated length times width. All dimensions are approximate and may vary with actual construction, and all floor plans and development plans are subject to change.



## PENTHOUSE 04 2 BEDROOM + DEN / 2.5 BATH

INTERIOR: 1,275 SF / 118 m<sup>2</sup> TERRACE: 258 SF / 24 m<sup>2</sup> TOTAL: 1,533 SF / 142 m<sup>2</sup>





## PENTHOUSE 05

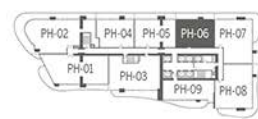
2 BEDROOM + DEN / 2.5 BATH

INTERIOR: 1,368 SF / 127 m<sup>2</sup> TERRACE: 273 SF / 25 m<sup>2</sup> TOTAL: 1,641 SF / 152 m<sup>2</sup>



BRICKELL FLATIRON





## PENTHOUSE 06

2 BEDROOM + DEN / 2.5 BATH

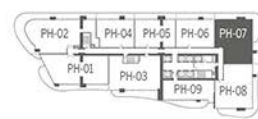
INTERIOR: 1,333 SF / 124 m<sup>2</sup> TERRACE: 268 SF / 25 m<sup>2</sup> TOTAL: 1,601 SF / 149 m<sup>2</sup>



BRICKELL FLATIRON



N



## PENTHOUSE 07

3 BEDROOM / 3.5 BATH

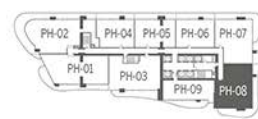
INTERIOR: 1,882 SF / 175 m<sup>2</sup> TERRACE: 634 SF / 59 m<sup>2</sup> TOTAL: 2,516 SF / 234 m<sup>2</sup>



BRICKELL FLATIRON



Stated dimensions are measured to the exterior boundaries of the exterior walls and the centerline of interior demising walls and in fact vary from the dimensions that would be determined by using the description and definition of the "Unit" set forth in the Declaration (which generally only includes the interior airspace between the perimeter walls and excludes interior structural components). For your reference, the area of the Unit, determined in accordance with those defined unit boundaries, is 1,882 SF. Note that measurements of rooms set forth on this floor plan are generally taken at the greatest points of each given room (as if the room were a perfect rectangle), without regard for any cutouts. Accordingly, the area of the actual room will typically be smaller than the product obtained by multiplying the stated length times width. All dimensions are approximate and may vary with actual construction, and all floor plans and development plans are subject to change.



## PENTHOUSE 08

3 BEDROOM / 3.5 BATH

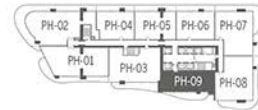
INTERIOR: 1,882 SF / 175 m<sup>2</sup> TERRACE: 594 SF / 55 m<sup>2</sup> TOTAL: 2,476 SF / 230 m<sup>2</sup>

0 3' 6' 9' 12' 15'

BRICKELL FLATIRON



N



## PENTHOUSE 09

2 BEDROOM / 2.5 BATH

INTERIOR: 1,366 SF / 127 m<sup>2</sup> TERRACE: 288 SF / 27 m<sup>2</sup> TOTAL: 1,654 SF / 154 m<sup>2</sup>



BRICKELL FLATIRON



Stated dimensions are measured to the exterior boundaries of the exterior walls and the centerline of interior demising walls and in fact vary from the dimensions that would be determined by using the description and definition of the "Unit" set forth in the Declaration (which generally only includes the interior airspace between the perimeter walls and excludes interior structural components). For your reference, the area of the Unit, determined in accordance with those defined unit boundaries, is 1,366 SF. Note that measurements of rooms set forth on this floor plan are generally taken at the greatest points of each given room (as if the room were a perfect rectangle), without regard for any cutouts. Accordingly, the area of the actual room will typically be smaller than the product obtained by multiplying the stated length times width. All dimensions are approximate and may vary with actual construction, and all floor plans and development plans are subject to change.