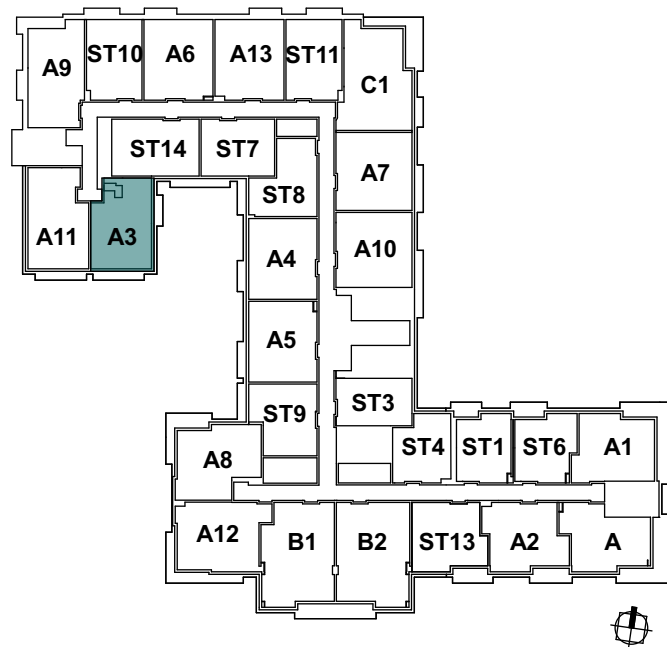
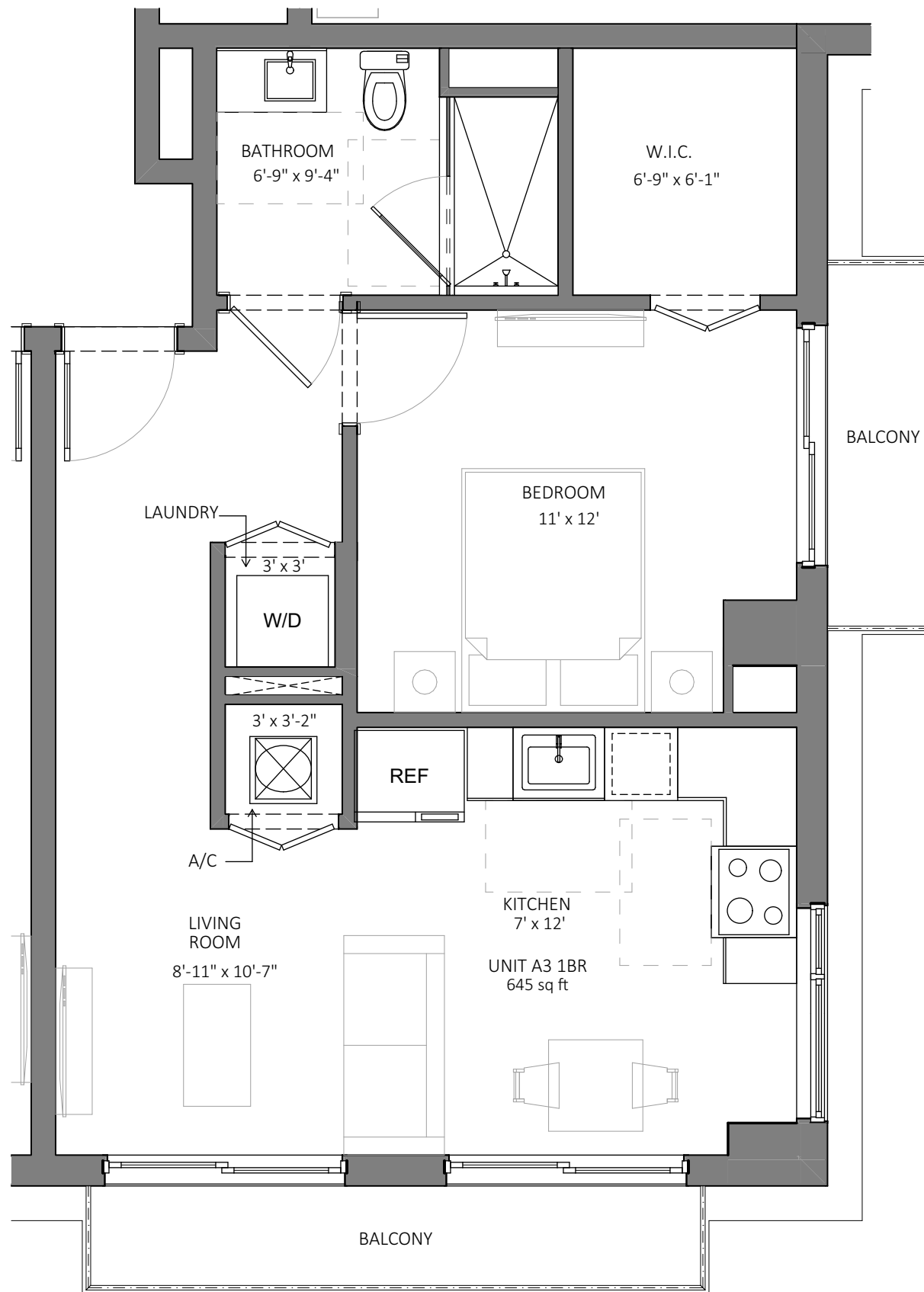


APT GROSS AREA	
	AREA
BALCONY	81.0
INTERIOR GROSS AREA	644.6
TOTAL	725.6 ft <sup>2</sup>



KEY PLAN



A3

1BD UNIT A3

SCALE: 1/4" = 1'-0"



**SW**  
**SOMI WALK**  
 RESIDENCES  
 5959 SW 71 ST.  
 SOUTH MIAMI, FL. 33143

DEVELOPER:



MSIRE  
 EVP | Acquisitions & Asset Management  
 Tel. 561-752-6635 | Fax. 305-476-8199  
 altadevelopment.com  
 9155 S. Dadeland Blvd, 1506  
 Miami, Florida 33156



**FORM GROUP, INC.**  
 6740 SW 64 CT, MIAMI, FL 33143  
 TEL. 305.443.4244 FX. 305.443.3338

ARCHITECT OF RECORD:  
 OMAR MORALES, AIA  
 AA-0014851

THE ABOVE FORMAT, TECHNIQUE AND DESIGN ARE THE PROPERTY OF FORM GROUP, INC. NO PART THEREOF SHALL BE COPIED, DISCLOSED OR USED IN WHOLE OR IN PART WITHOUT THE WRITTEN CONSENT OF THE ARCHITECT.

PROJECT NO.  
 23-0310

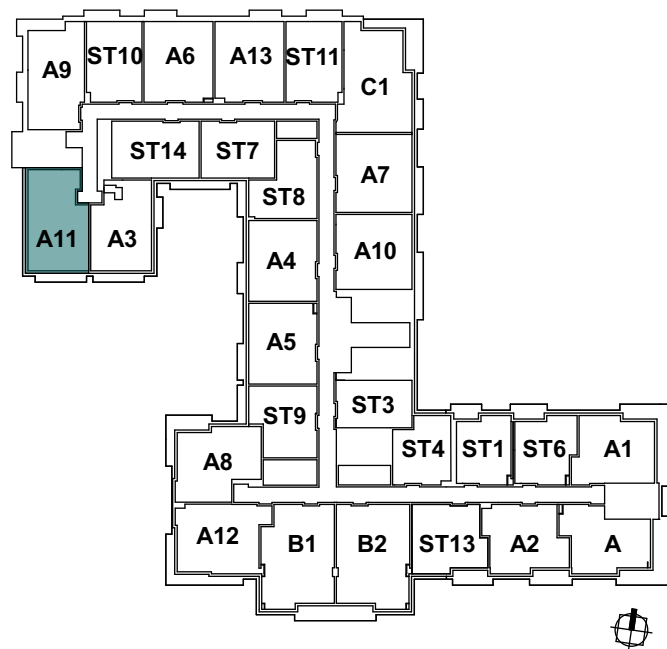
TITLE:  
 TYPE A3

DATE:  
 NOVEMBER 15, 2022

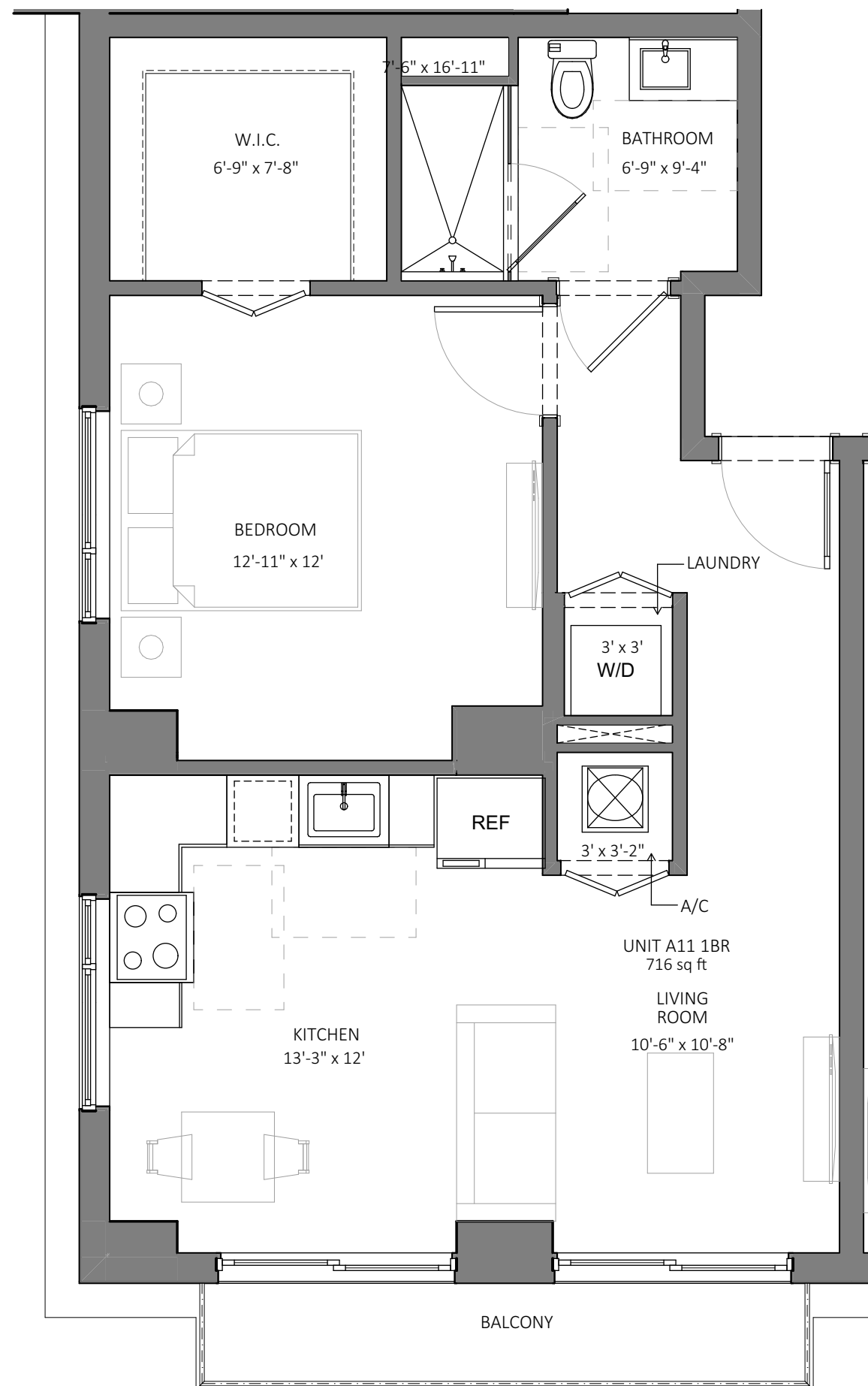
SCALE:  
 AS SHOWN

DRAWING NO.:  
**UNIT  
 DETAIL**

APT GROSS AREA	
	AREA
BALCONY	50.5
INTERIOR GROSS AREA	716.3
<b>TOTAL</b>	<b>766.8 ft<sup>2</sup></b>



KEY PLAN



**A11** 1BD UNIT A11  
SCALE: 1/4" = 1'-0"

**SW**  
**SOMI WALK**  
RESIDENCES  
5959 SW 71 ST.  
SOUTH MIAMI, FL. 33143

DEVELOPER:  
**ALTA**  
DEVELOPMENT

MSIRE  
EVP | Acquisitions & Asset Management  
Tel. 561-752-6635 | Fax. 305-476-8199  
altadevelopment.com  
9155 S. Dadeland Blvd, 1506  
Miami, Florida 33156

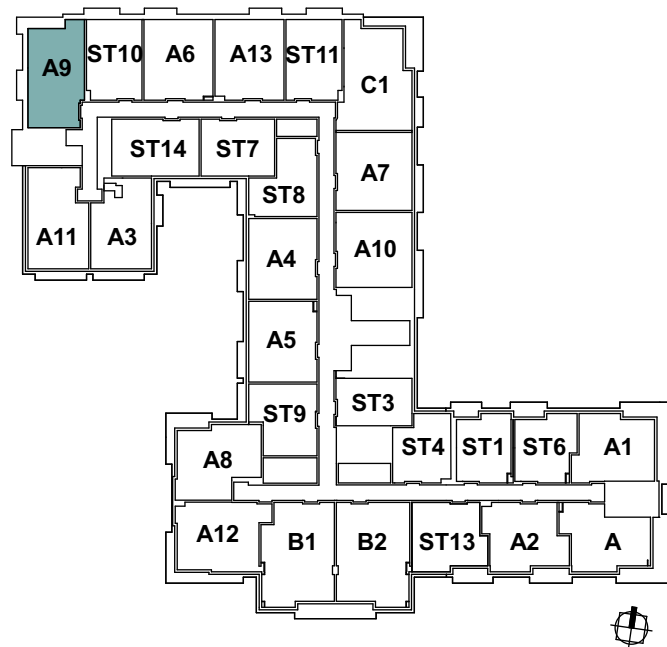
**FORMGROUP**  
architecture .planning

**FORM GROUP, INC.**  
6740 SW 64 CT, MIAMI, FL 33143  
TEL. 305.443.4244 FX. 305.443.3338  
ARCHITECT OF RECORD:  
OMAR MORALES, AIA  
AA-0014851

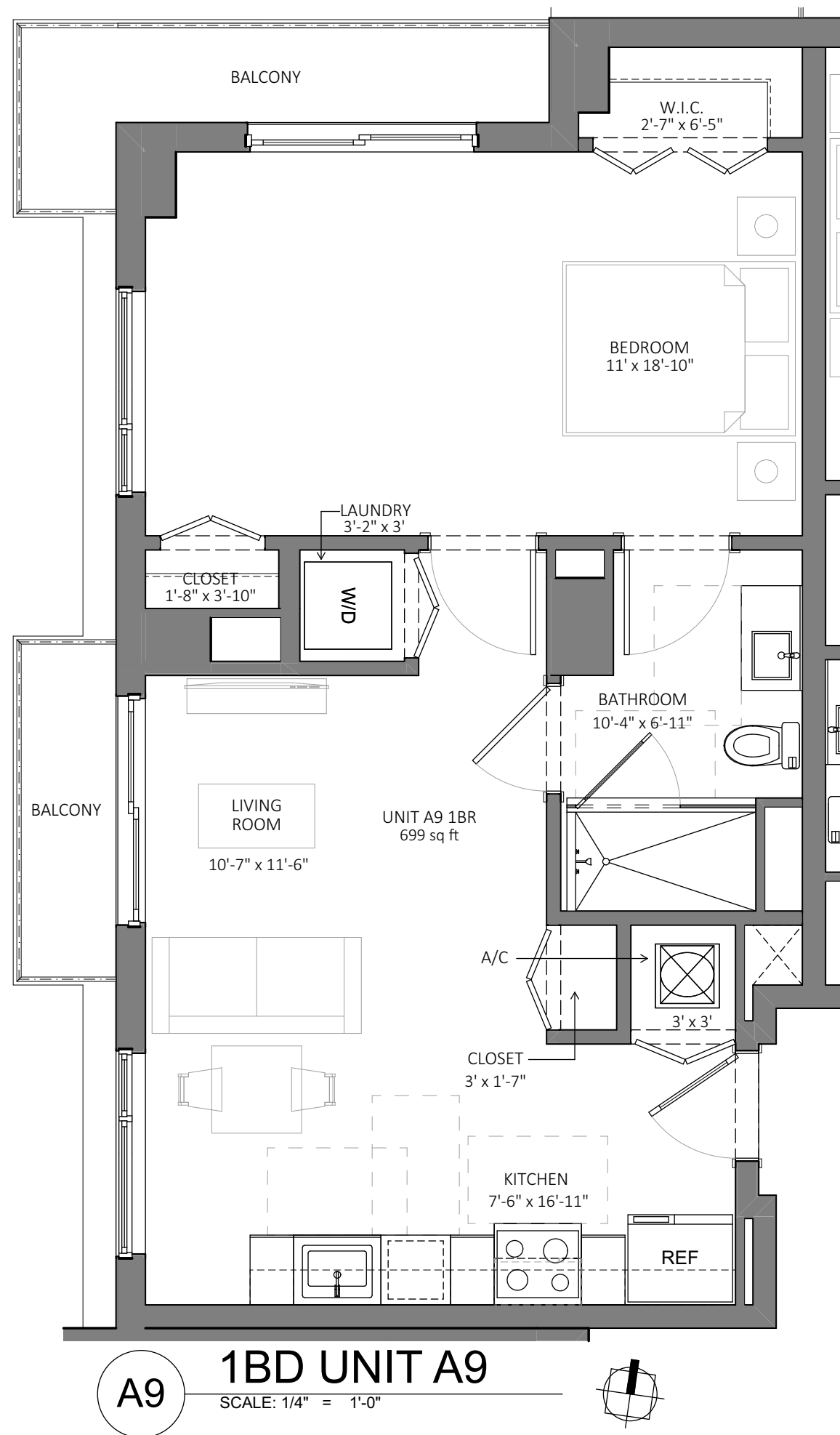
THE ABOVE FORMAT, TECHNIQUE AND DESIGN ARE THE PROPERTY OF FORM GROUP, INC. NO PART THEREOF SHALL BE COPIED, DISCLOSED OR USED IN WHOLE OR IN PART WITHOUT THE WRITTEN CONSENT OF THE ARCHITECT.

PROJECT NO. 23-0310 TITLE: TYPE A11  
DATE: NOVEMBER 15, 2022  
SCALE: AS SHOWN DRAWING NO.: UNIT DETAIL

APT GROSS AREA	
	AREA
BALCONY	82.8
INTERIOR GROSS AREA	699.1
<b>TOTAL</b>	<b>781.9 ft<sup>2</sup></b>



KEY PLAN



**A9** 1BD UNIT A9  
SCALE: 1/4" = 1'-0"

**SW**  
**SOMI WALK**  
RESIDENCES  
5959 SW 71 ST.  
SOUTH MIAMI, FL. 33143

DEVELOPER:  
**ALTA**  
DEVELOPMENT

MSIRE  
EVP | Acquisitions & Asset Management  
Tel. 561-752-6635 | Fax. 305-476-8199  
altadevelopment.com  
9155 S. Dadeland Blvd, 1506  
Miami, Florida 33156

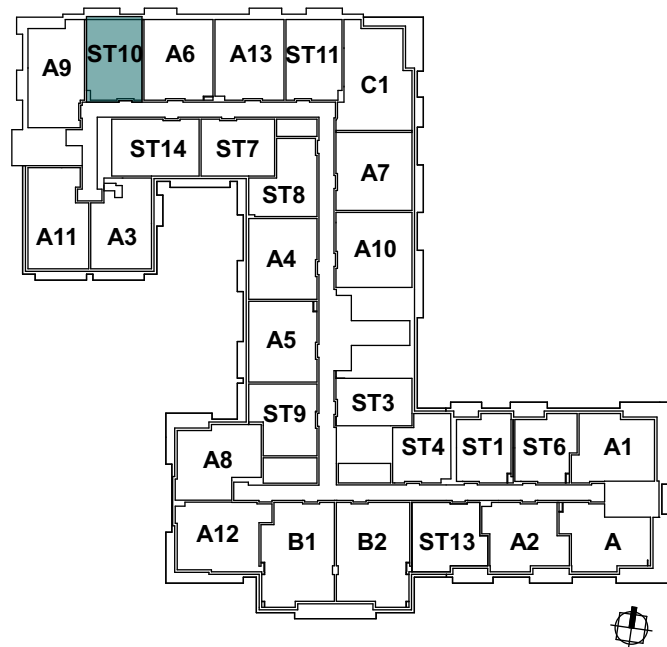
**FORMGROUP**  
architecture .planning

**FORM GROUP, INC.**  
6740 SW 64 CT, MIAMI, FL 33143  
TEL. 305.443.4244 FX. 305.443.3338  
ARCHITECT OF RECORD:  
OMAR MORALES, AIA  
AA-0014851

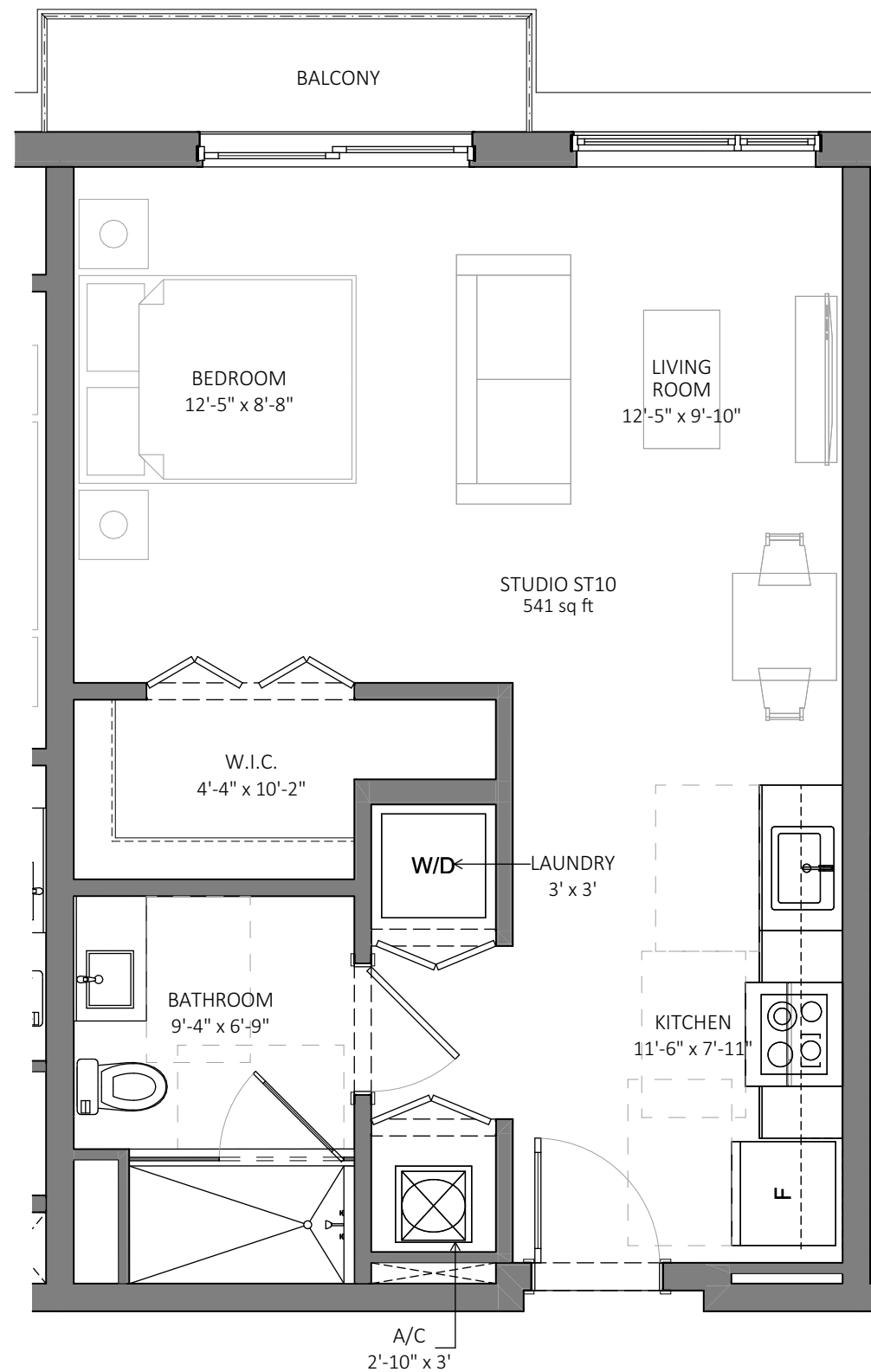
THE ABOVE FORMAT, TECHNIQUE AND DESIGN ARE THE PROPERTY OF FORM GROUP, INC. NO PART THEREOF SHALL BE COPIED, DISCLOSED OR USED IN WHOLE OR IN PART WITHOUT THE WRITTEN CONSENT OF THE ARCHITECT.

PROJECT NO. 23-0310 TITLE: TYPE A9  
DATE: NOVEMBER 15, 2022  
SCALE: AS SHOWN DRAWING NO.: UNIT DETAIL

APT GROSS AREA	
	AREA
BALCONY	35.4
INTERIOR GROSS AREA	540.9
TOTAL	576.3 ft <sup>2</sup>



KEY PLAN



**ST10** STUDIO UNIT ST10  
SCALE: 1/4" = 1'-0"

**SOMI WALK**  
RESIDENCES

5959 SW 71 ST.  
SOUTH MIAMI, FL. 33143

DEVELOPER:



MSIRE  
EVP | Acquisitions & Asset Management  
Tel. 561-752-6635 | Fax. 305-476-8199  
altadevelopment.com  
9155 S. Dadeland Blvd, 1506  
Miami, Florida 33156



**FORM GROUP, INC.**  
6740 SW 64 CT, MIAMI, FL 33143  
TEL. 305.443.4244 FX. 305.443.3338

ARCHITECT OF RECORD:  
OMAR MORALES, AIA  
AA-0014851

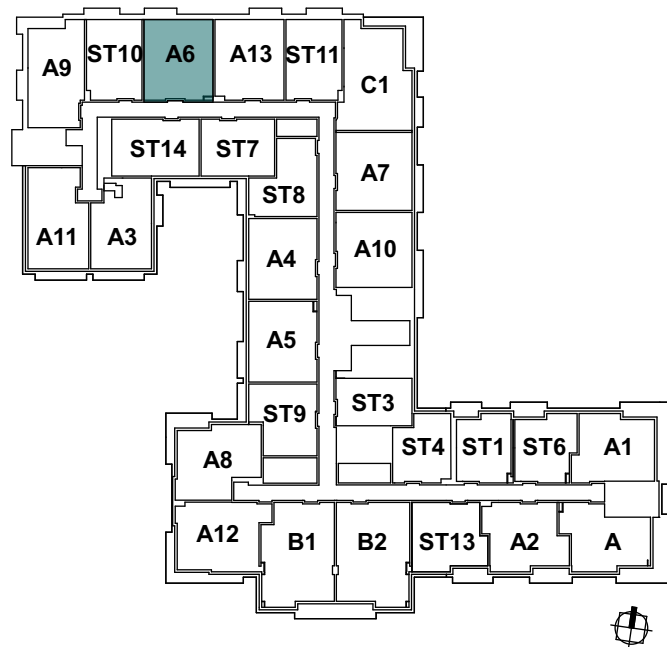
THE ABOVE FORMAT, TECHNIQUE AND DESIGN ARE THE PROPERTY OF FORM GROUP, INC. NO PART THEREOF SHALL BE COPIED, DISCLOSED OR USED IN WHOLE OR IN PART WITHOUT THE WRITTEN CONSENT OF THE ARCHITECT.

PROJECT NO. 23-0310 TITLE: TYPE ST10

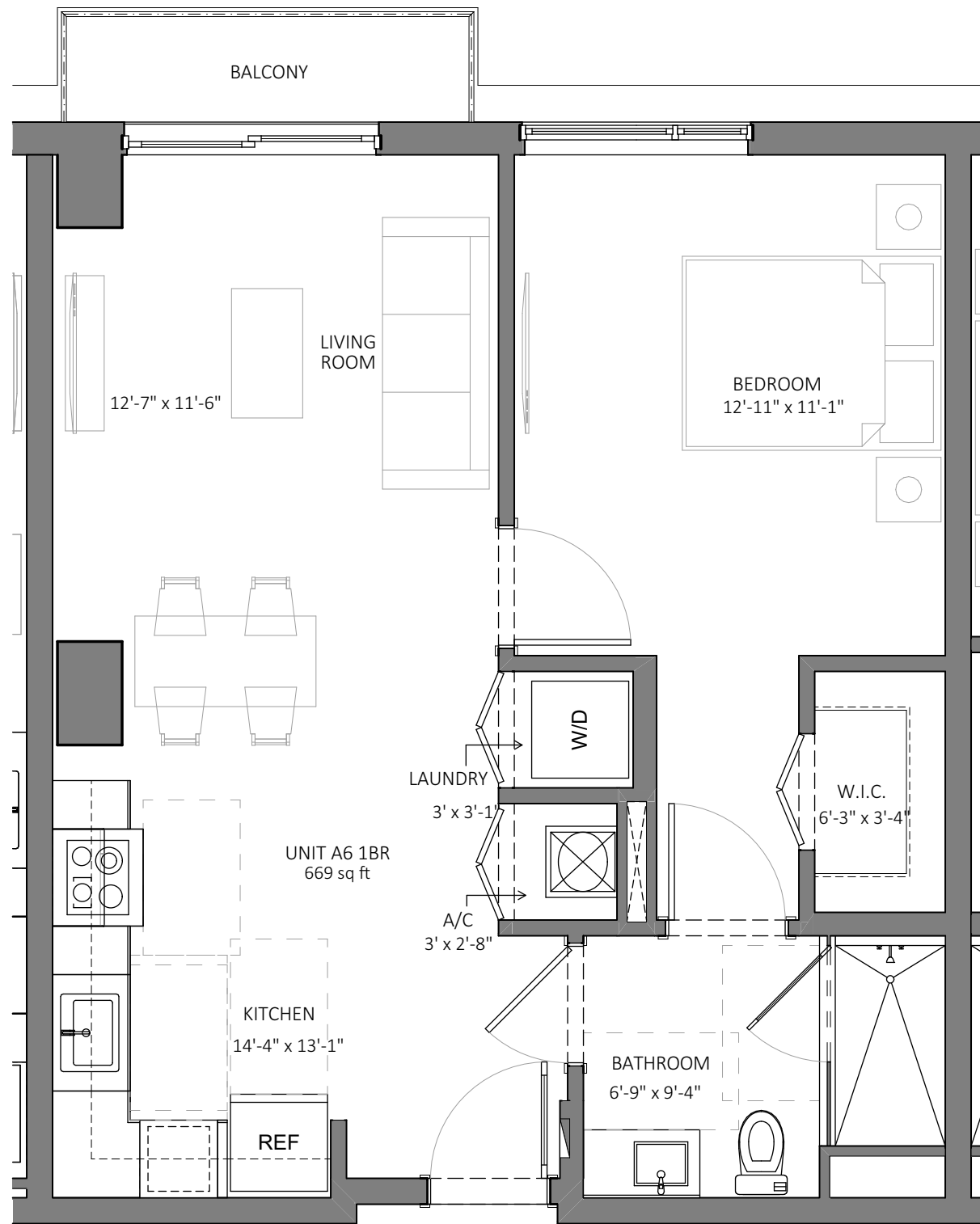
DATE: NOVEMBER 15, 2022

SCALE: AS SHOWN DRAWING NO.: UNIT DETAIL

APT GROSS AREA	
	AREA
BALCONY	31.9
INTERIOR GROSS AREA	668.5
<b>TOTAL</b>	<b>700.4 ft<sup>2</sup></b>



KEY PLAN



**A6** 1BD UNIT A6  
SCALE: 1/4" = 1'-0"

**SW**  
**SOMI WALK**  
RESIDENCES  
5959 SW 71 ST.  
SOUTH MIAMI, FL. 33143

DEVELOPER:  
**ALTA**  
DEVELOPMENT

MSIRE  
EVP | Acquisitions & Asset Management  
Tel. 561-752-6635 | Fax. 305-476-8199  
altadevelopment.com  
9155 S. Dadeland Blvd, 1506  
Miami, Florida 33156

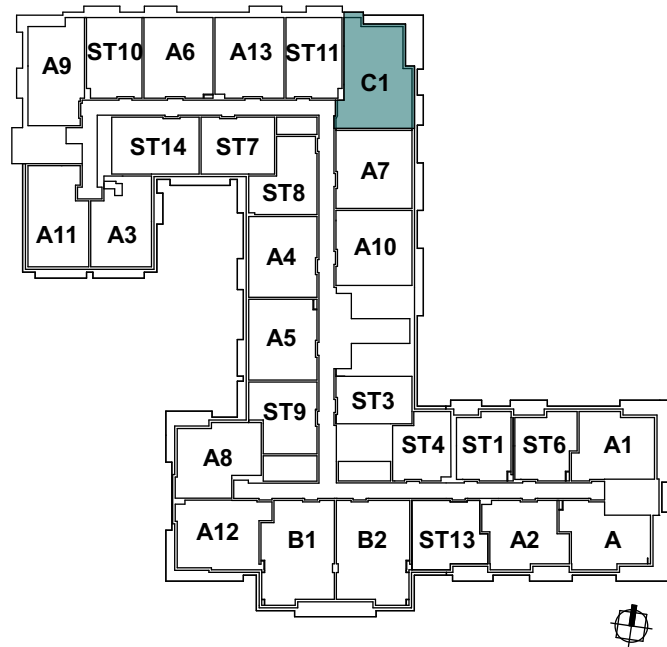
**FORMGROUP**  
architecture .planning

**FORM GROUP, INC.**  
6740 SW 64 CT, MIAMI, FL 33143  
TEL. 305.443.4244 FX. 305.443.3338  
ARCHITECT OF RECORD:  
OMAR MORALES, AIA  
AA-0014851

THE ABOVE FORMAT, TECHNIQUE AND DESIGN ARE THE PROPERTY OF FORM GROUP, INC. NO PART THEREOF SHALL BE COPIED, DISCLOSED OR USED IN WHOLE OR IN PART WITHOUT THE WRITTEN CONSENT OF THE ARCHITECT.

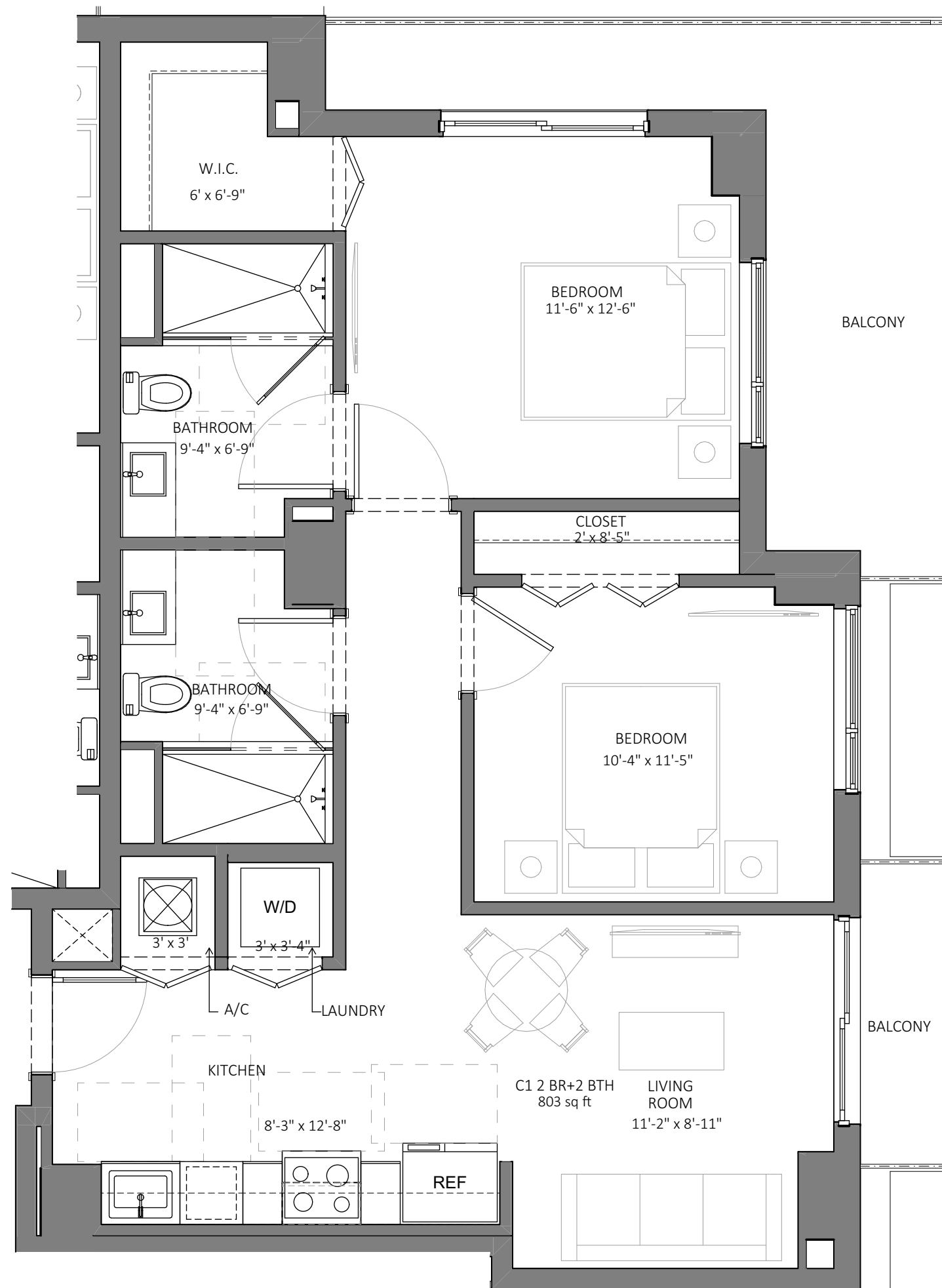
PROJECT NO. 23-0310 TITLE: TYPE A6  
DATE: NOVEMBER 15, 2022  
SCALE: AS SHOWN DRAWING NO.: UNIT DETAIL

APT GROSS AREA	
	AREA
BALCONY	175.6
INTERIOR GROSS AREA	803.2
TOTAL	978.8 ft <sup>2</sup>



KEY PLAN

**C1** 2BD+2BTH UNIT C1  
SCALE: 1/4" = 1'-0"



**SW**  
**SOMI WALK**  
RESIDENCES  
5959 SW 71 ST.  
SOUTH MIAMI, FL. 33143

DEVELOPER:  
**ALTA**  
DEVELOPMENT

MSIRE  
EVP | Acquisitions & Asset Management  
Tel. 561-752-6635 | Fax. 305-476-8199  
altadevelopment.com  
9155 S. Dadeland Blvd, 1506  
Miami, Florida 33156

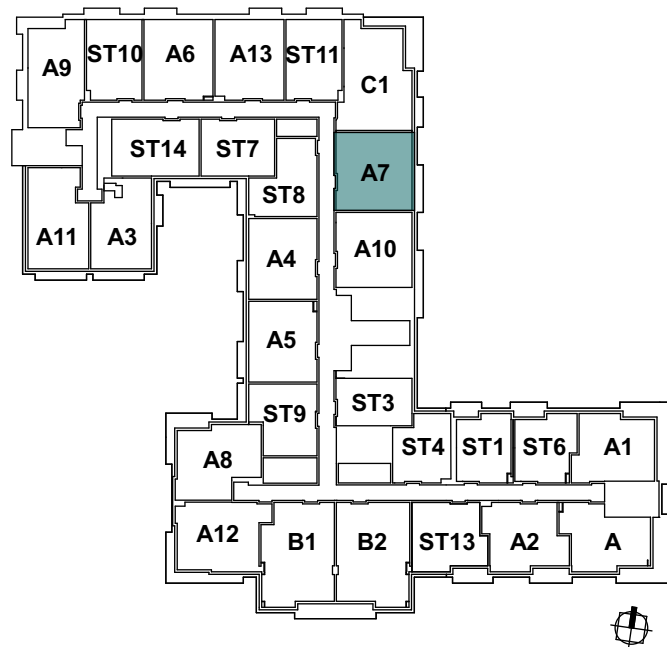
**FORMGROUP**  
architecture .planning

**FORM GROUP, INC.**  
6740 SW 64 CT, MIAMI, FL 33143  
TEL. 305.443.4244 FX. 305.443.3338  
ARCHITECT OF RECORD:  
OMAR MORALES, AIA  
AA-0014851

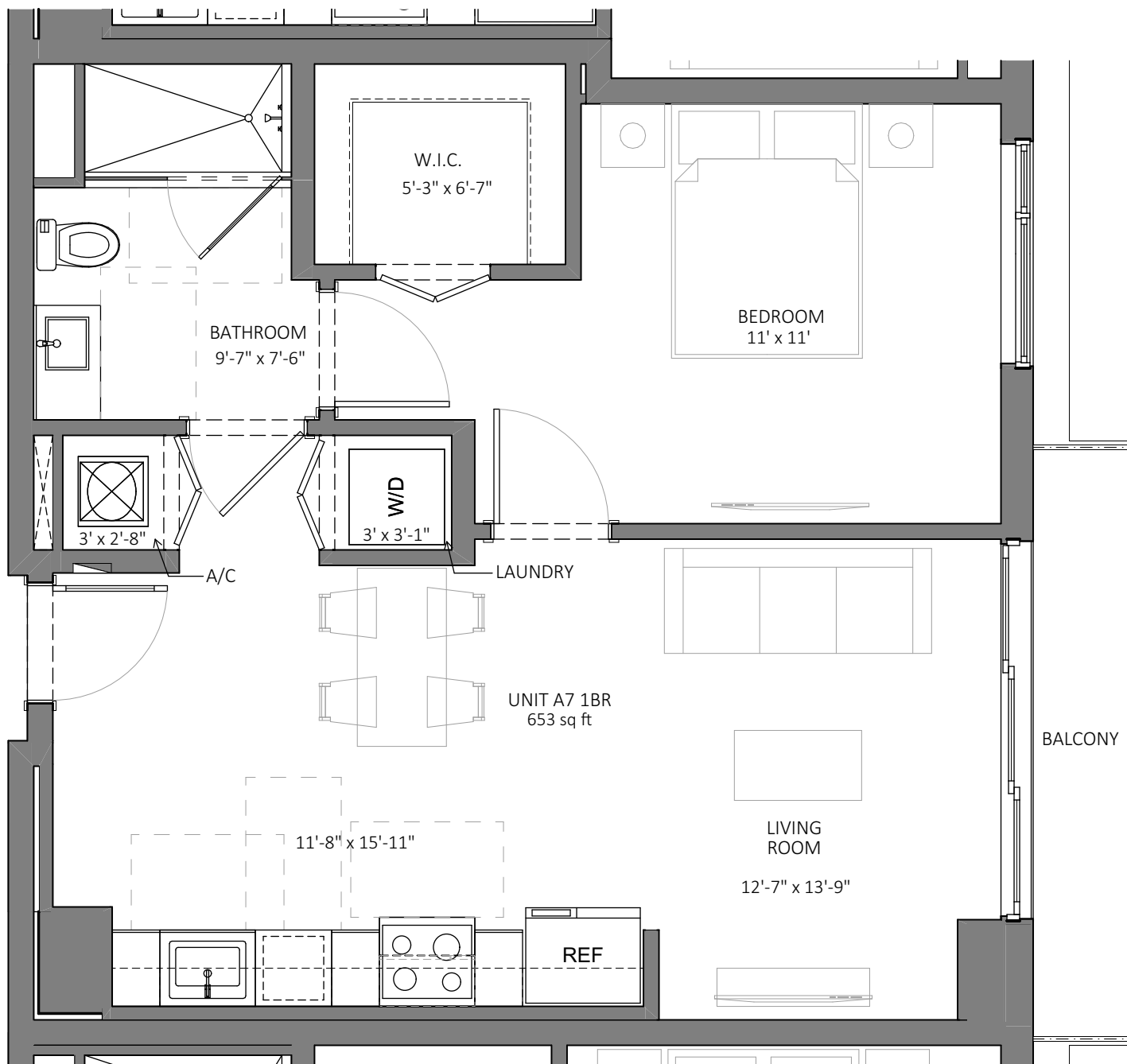
THE ABOVE FORMAT, TECHNIQUE AND DESIGN ARE THE PROPERTY OF FORM GROUP, INC. NO PART THEREOF SHALL BE COPIED, DISCLOSED OR USED IN WHOLE OR IN PART WITHOUT THE WRITTEN CONSENT OF THE ARCHITECT.

PROJECT NO. 23-0310 TITLE: C1  
DATE: NOVEMBER 15, 2022  
SCALE: AS SHOWN DRAWING NO.: UNIT DETAIL

APT GROSS AREA	
	AREA
BALCONY	46.7
INTERIOR GROSS AREA	653.1
TOTAL	699.8 ft <sup>2</sup>



KEY PLAN



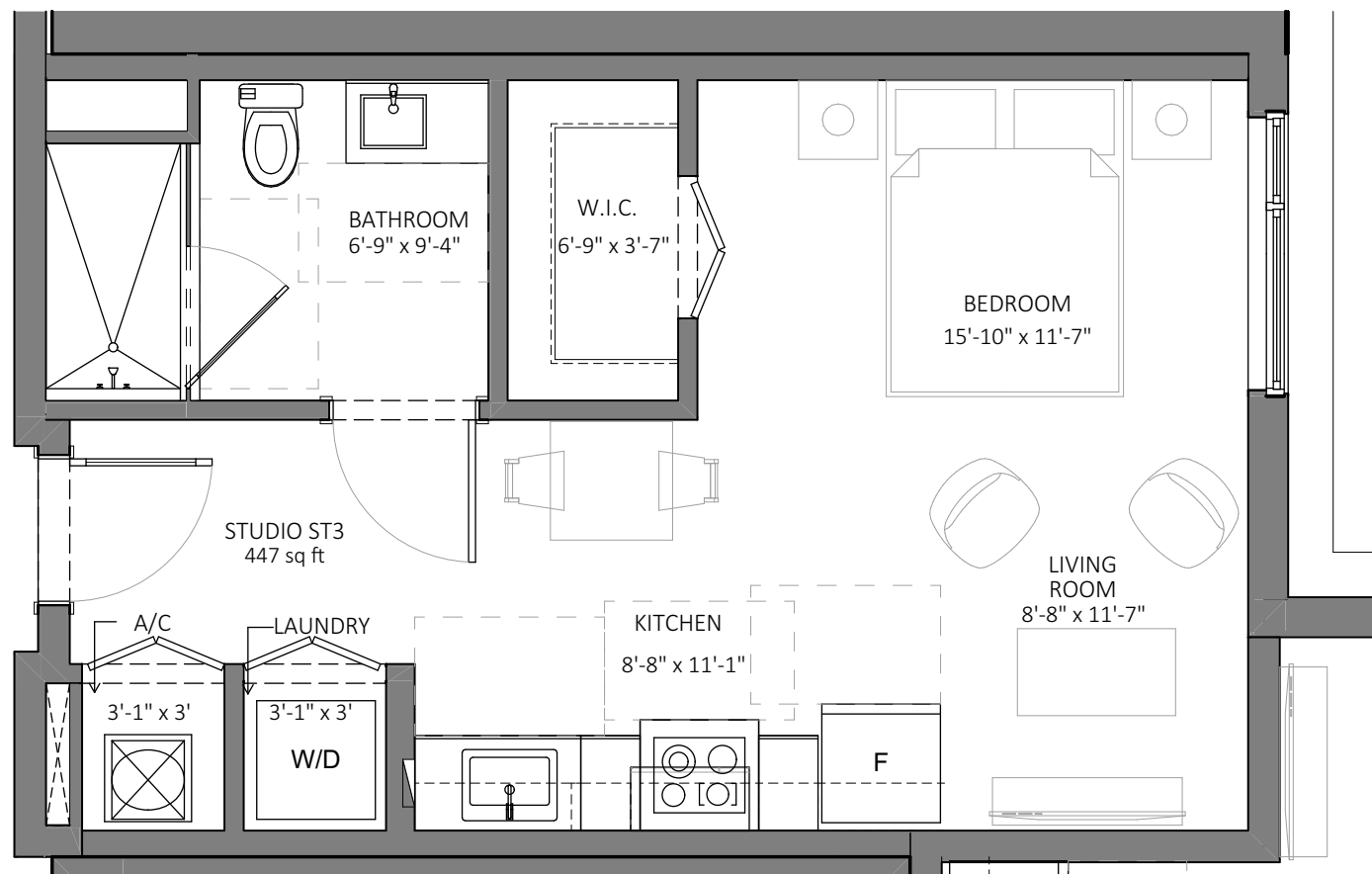
**A7** 1BD UNIT A7  
SCALE: 1/4" = 1'-0"



GROSS APT AREA	
	AREA
INTERIOR GROSS AREA	447.0
TOTAL	447.0 ft <sup>2</sup>



KEY PLAN (LEVEL 7-15)



**ST3** STUDIO UNIT ST3  
SCALE: 1/4" = 1'-0"

**SOMI WALK**  
RESIDENCES  
5959 SW 71 ST.  
SOUTH MIAMI, FL. 33143

DEVELOPER:  
**ALTA**  
DEVELOPMENT

MSIRE  
EVP | Acquisitions & Asset Management  
Tel. 561-752-6635 | Fax. 305-476-8199  
altadevelopment.com  
9155 S. Dadeland Blvd, 1506  
Miami, Florida 33156



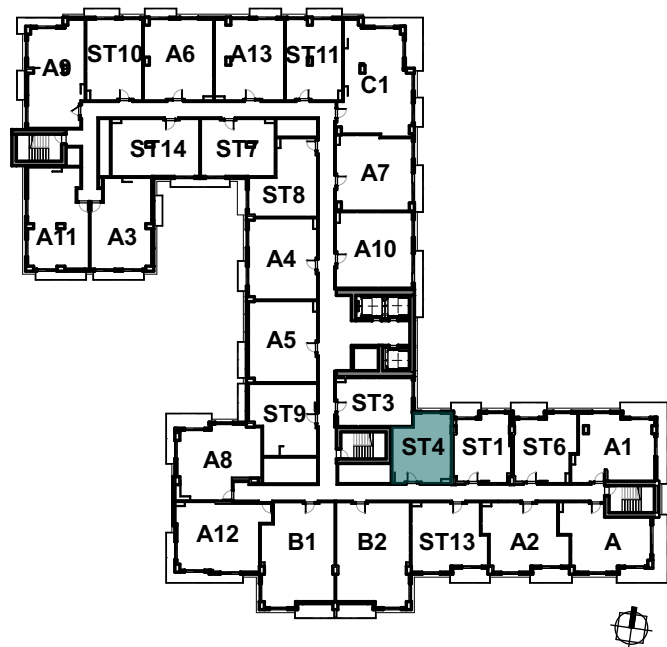
**FORM GROUP, INC.**  
6740 SW 64 CT, MIAMI, FL 33143  
TEL. 305.443.4244 FX. 305.443.3338  
ARCHITECT OF RECORD:  
OMAR MORALES, AIA  
AA-0014851

THE ABOVE FORMAT, TECHNIQUE AND DESIGN ARE THE PROPERTY OF FORM GROUP, INC. NO PART THEREOF SHALL BE COPIED, DISCLOSED OR USED IN WHOLE OR IN PART WITHOUT THE WRITTEN CONSENT OF THE ARCHITECT.

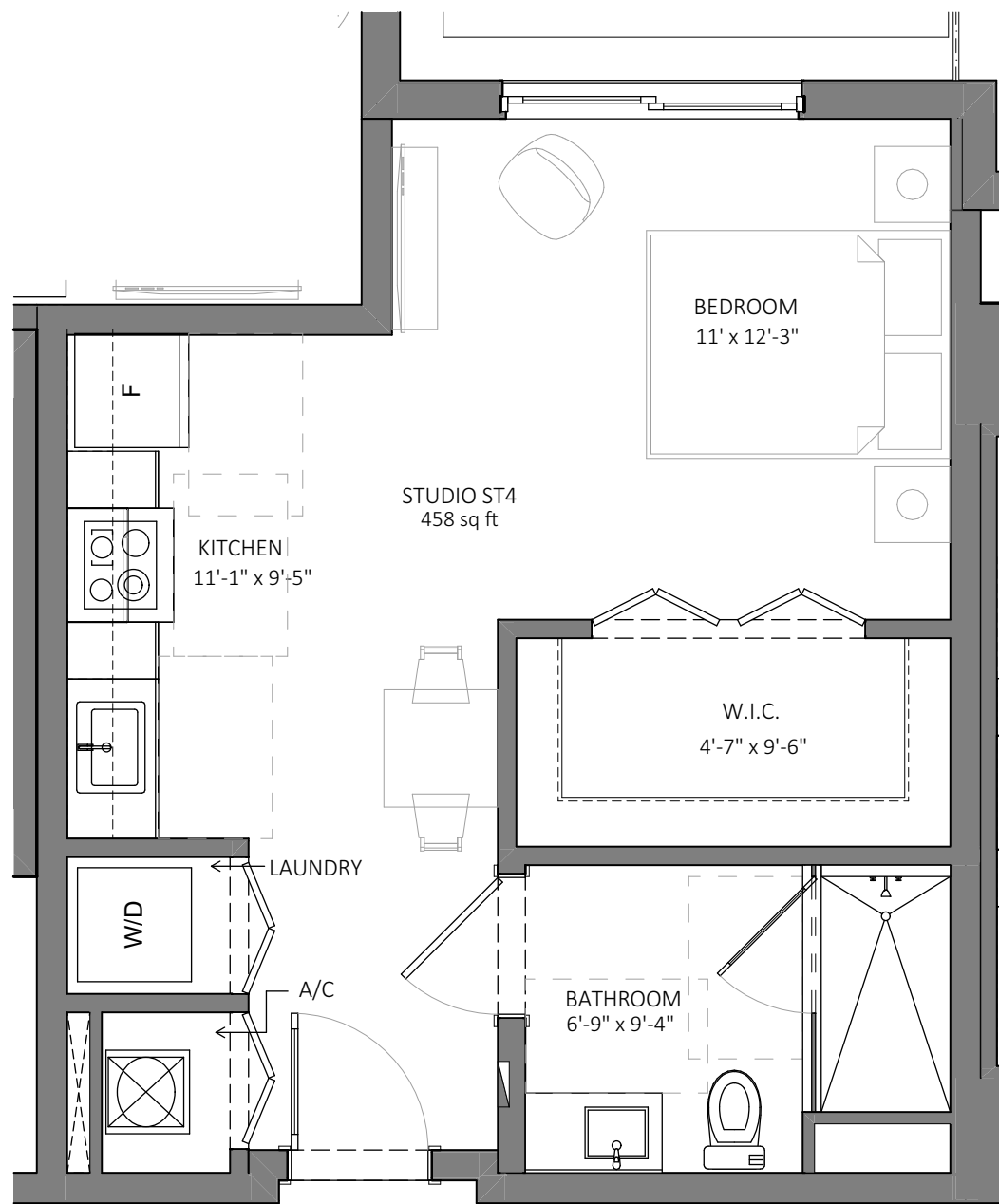
PROJECT NO. 23-0310 TITLE: TYPE ST3  
DATE: NOVEMBER 15, 2022  
SCALE: AS SHOWN DRAWING NO.: UNIT DETAIL



GROSS APT AREA	
	AREA
INTERIOR GROSS AREA	457.6
TOTAL	457.6 ft <sup>2</sup>



KEY PLAN (LEVEL 7-15)



**ST4** STUDIO UNIT ST4  
SCALE: 1/4" = 1'-0"

**SOMI WALK**  
RESIDENCES

5959 SW 71 ST.  
SOUTH MIAMI, FL. 33143

DEVELOPER:



MSIRE  
EVP | Acquisitions & Asset Management  
Tel. 561-752-6635 | Fax. 305-476-8199  
altadevelopment.com  
9155 S. Dadeland Blvd, 1506  
Miami, Florida 33156



**FORM GROUP, INC.**  
6740 SW 64 CT, MIAMI, FL 33143  
TEL. 305.443.4244 FX. 305.443.3338

ARCHITECT OF RECORD:  
OMAR MORALES, AIA  
AA-0014851

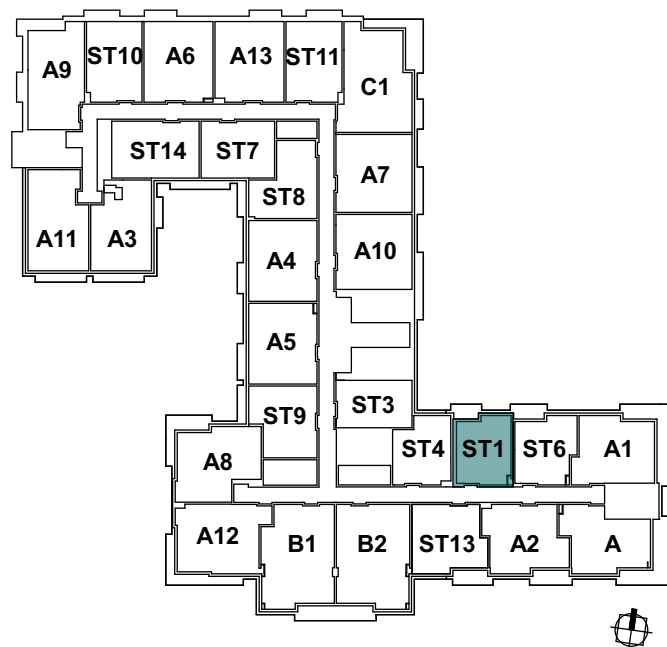
THE ABOVE FORMAT, TECHNIQUE AND DESIGN ARE THE PROPERTY OF FORM GROUP, INC. NO PART THEREOF SHALL BE COPIED, DISCLOSED OR USED IN WHOLE OR IN PART WITHOUT THE WRITTEN CONSENT OF THE ARCHITECT.

PROJECT NO. 23-0310 TITLE: TYPE ST4

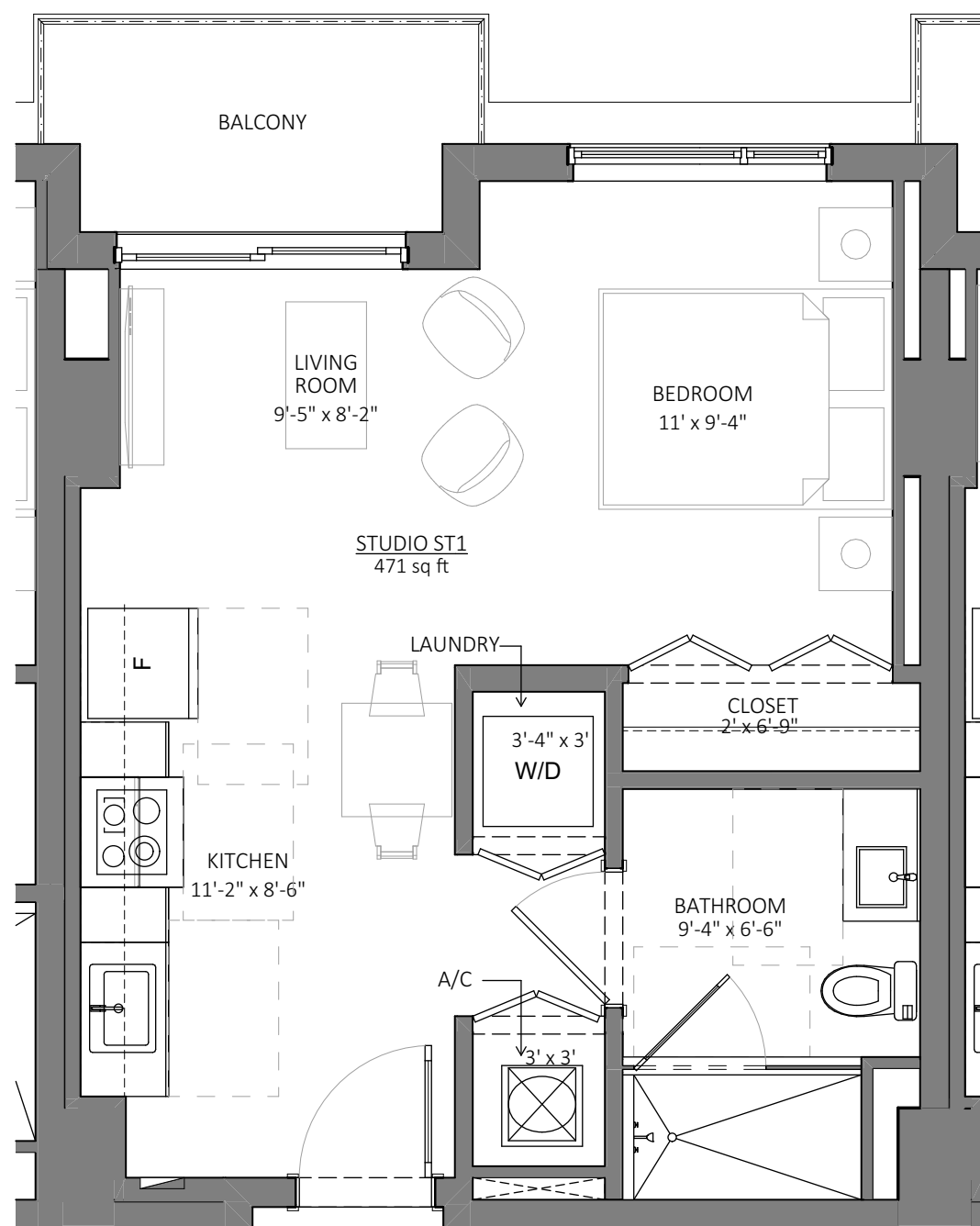
DATE: NOVEMBER 15, 2022

SCALE: AS SHOWN DRAWING NO.: UNIT DETAIL

APT GROSS AREA	
	AREA
BALCONY	46.9
INTERIOR GROSS AREA	471.3
TOTAL	518.2 ft <sup>2</sup>



KEY PLAN



**ST1** STUDIO UNIT ST1  
SCALE: 1/4" = 1'-0"

**SOMI WALK**  
RESIDENCES

5959 SW 71 ST.  
SOUTH MIAMI, FL. 33143

DEVELOPER:



MSIRE  
EVP | Acquisitions & Asset Management  
Tel. 561-752-6635 | Fax. 305-476-8199  
altadevelopment.com  
9155 S. Dadeland Blvd, 1506  
Miami, Florida 33156



**FORM GROUP, INC.**  
6740 SW 64 CT, MIAMI, FL 33143  
TEL. 305.443.4244 FX. 305.443.3338

ARCHITECT OF RECORD:  
OMAR MORALES, AIA  
AA-0014851

THE ABOVE FORMAT, TECHNIQUE AND DESIGN ARE THE PROPERTY OF FORM GROUP, INC. NO PART THEREOF SHALL BE COPIED, DISCLOSED OR USED IN WHOLE OR IN PART WITHOUT THE WRITTEN CONSENT OF THE ARCHITECT.

PROJECT NO. 23-0310 TITLE: TYPE ST1

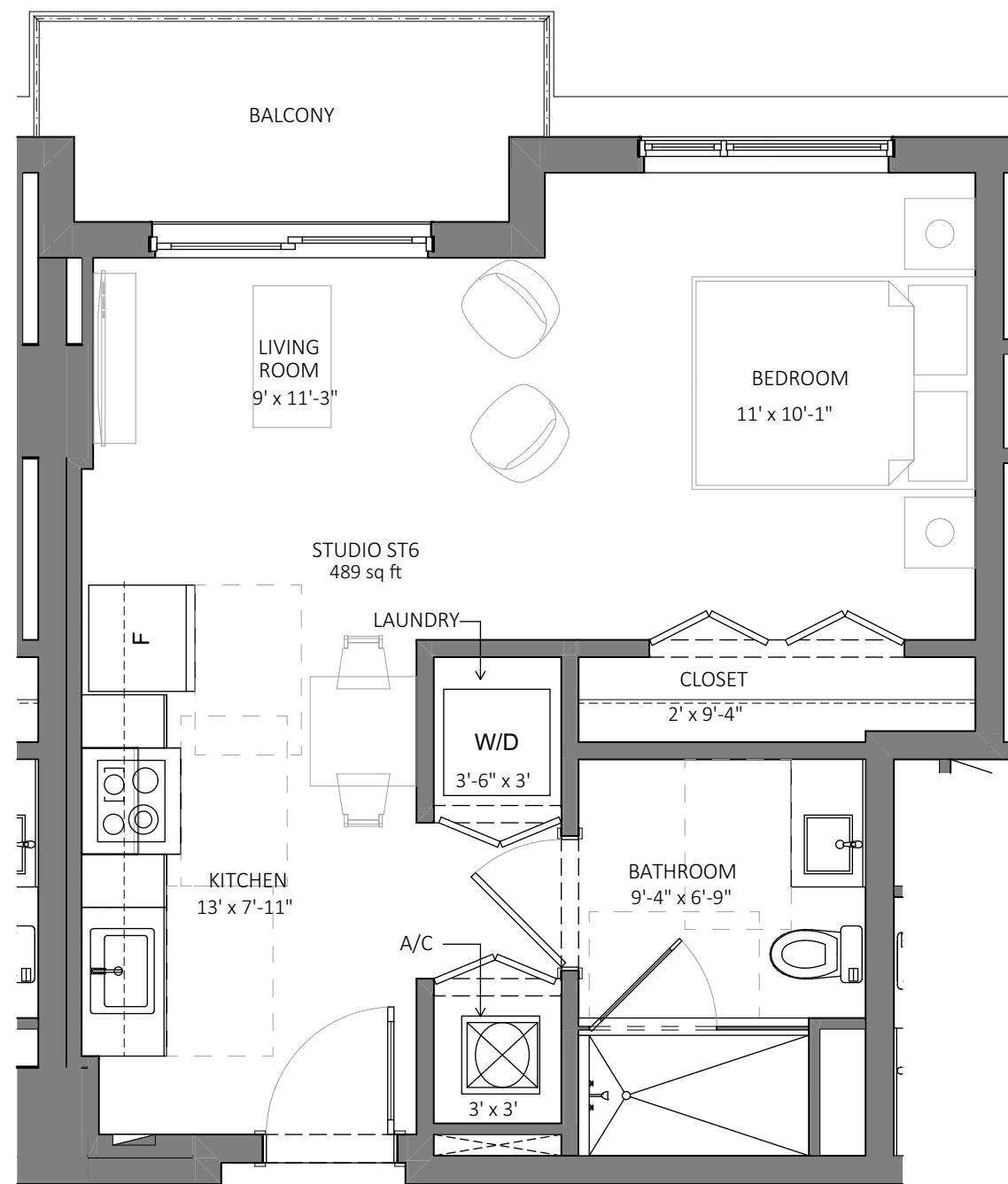
DATE: NOVEMBER 15, 2022

SCALE: AS SHOWN DRAWING NO.: UNIT DETAIL

GROSS APT AREA	
	AREA
BALCONY	56.8
INTERIOR GROSS AREA	489.1
TOTAL	545.9 ft <sup>2</sup>



KEY PLAN (LEVEL 7-15)



**ST6** STUDIO UNIT ST6  
SCALE: 1/4" = 1'-0"

**SW**  
**SOMI WALK**  
RESIDENCES  
5959 SW 71 ST.  
SOUTH MIAMI, FL. 33143

DEVELOPER:  
**ALTA**  
DEVELOPMENT

MSIRE  
EVP | Acquisitions & Asset Management  
Tel. 561-752-6635 | Fax. 305-476-8199  
altadevelopment.com  
9155 S. Dadeland Blvd, 1506  
Miami, Florida 33156

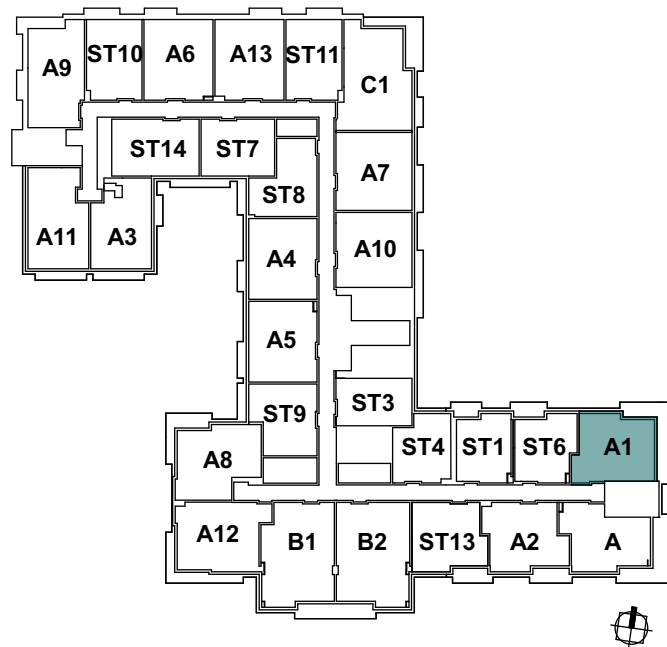


**FORM GROUP, INC.**  
6740 SW 64 CT, MIAMI, FL 33143  
TEL. 305.443.4244 FX. 305.443.3338  
ARCHITECT OF RECORD:  
OMAR MORALES, AIA  
AA-0014851

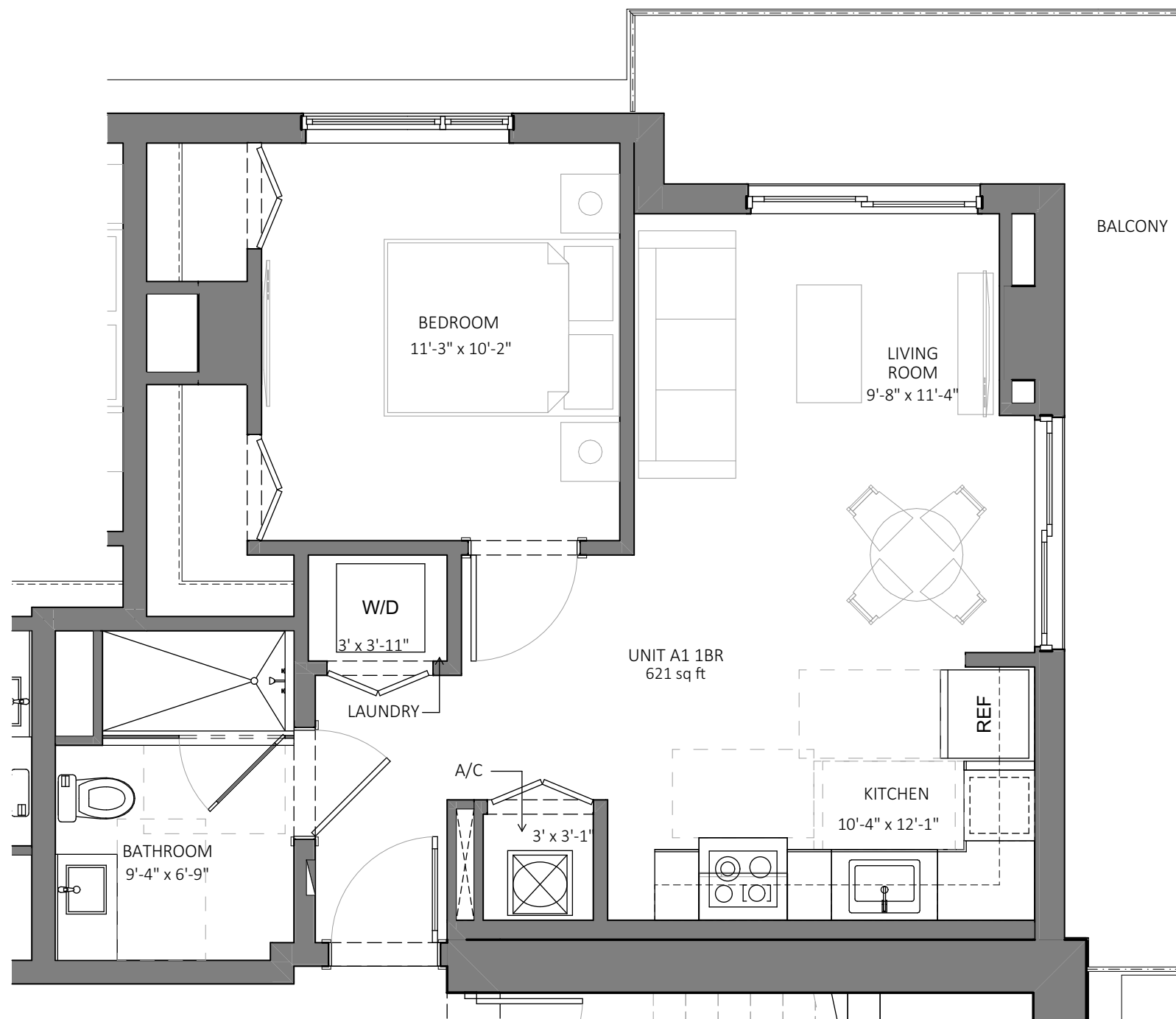
THE ABOVE FORMAT, TECHNIQUE AND DESIGN ARE THE PROPERTY OF FORM GROUP, INC. NO PART THEREOF SHALL BE COPIED, DISCLOSED OR USED IN WHOLE OR IN PART WITHOUT THE WRITTEN CONSENT OF THE ARCHITECT.

PROJECT NO. 23-0310 TITLE: TYPE ST6  
DATE: NOVEMBER 15, 2022  
SCALE: AS SHOWN DRAWING NO.: UNIT DETAIL

APT GROSS AREA	
	AREA
BALCONY	157.3
INTERIOR GROSS AREA	620.9
TOTAL	778.2 ft <sup>2</sup>



KEY PLAN



**A1** 1BD UNIT A1  
SCALE: 1/4" = 1'-0"

**SW**  
**SOMI WALK**  
RESIDENCES  
5959 SW 71 ST.  
SOUTH MIAMI, FL. 33143

DEVELOPER:  
**ALTA**  
DEVELOPMENT

MSIRE  
EVP | Acquisitions & Asset Management  
Tel. 561-752-6635 | Fax. 305-476-8199  
altadevelopment.com  
9155 S. Dadeland Blvd, 1506  
Miami, Florida 33156

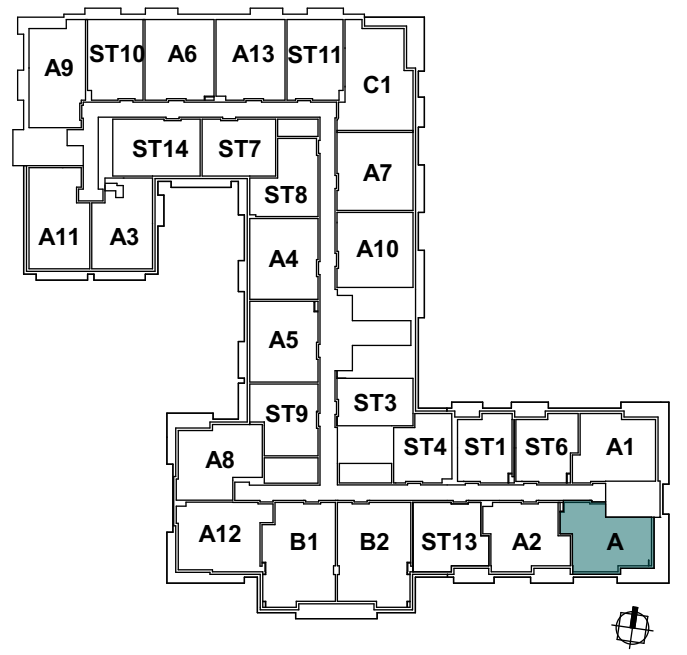


**FORM GROUP, INC.**  
6740 SW 64 CT, MIAMI, FL 33143  
TEL. 305.443.4244 FX. 305.443.3338  
ARCHITECT OF RECORD:  
OMAR MORALES, AIA  
AA-0014851

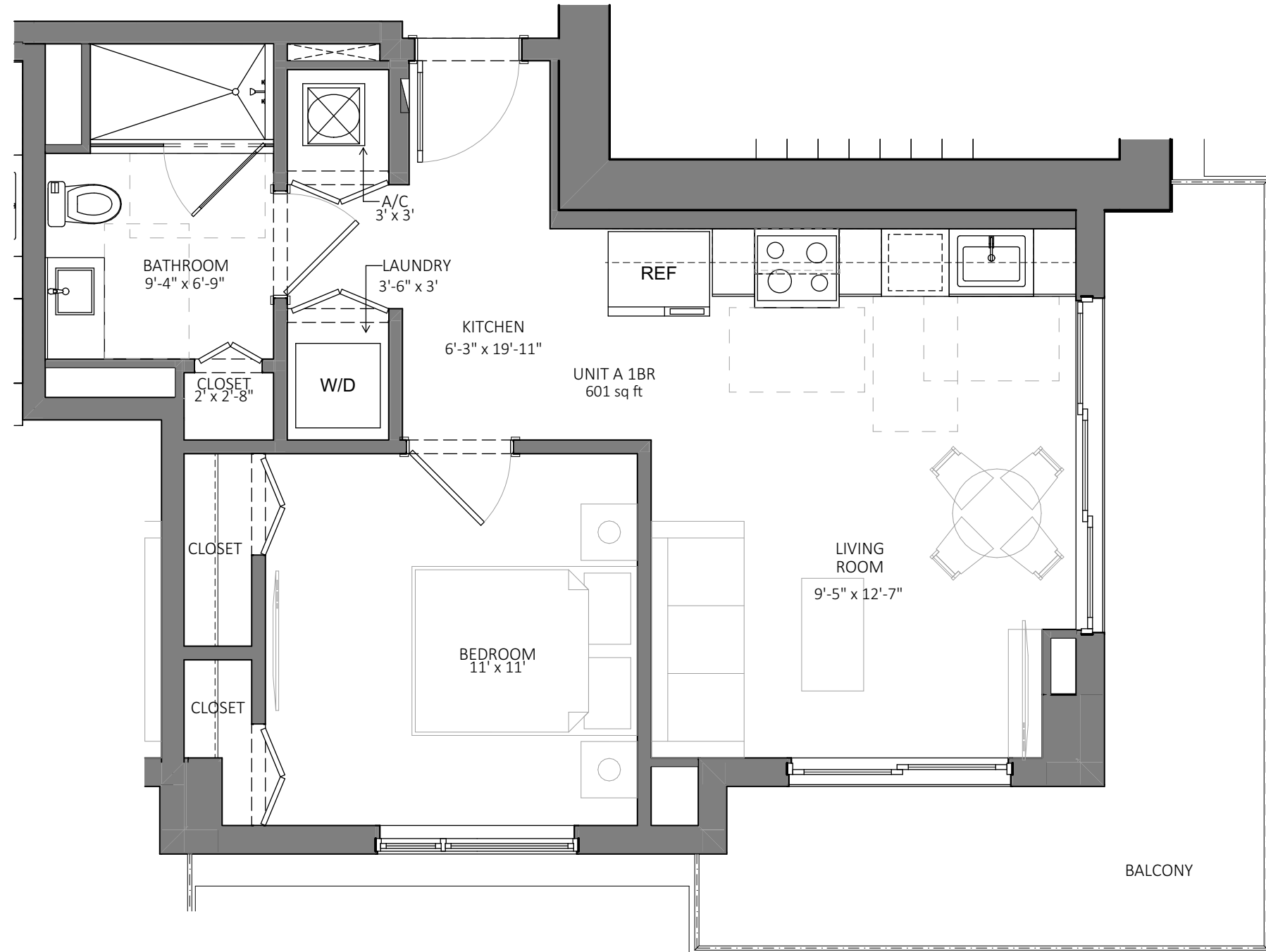
THE ABOVE FORMAT, TECHNIQUE AND DESIGN ARE THE PROPERTY OF FORM GROUP, INC. NO PART THEREOF SHALL BE COPIED, DISCLOSED OR USED IN WHOLE OR IN PART WITHOUT THE WRITTEN CONSENT OF THE ARCHITECT.

PROJECT NO. 23-0310 TITLE: TYPE A1  
DATE: NOVEMBER 15, 2022  
SCALE: AS SHOWN DRAWING NO.: UNIT DETAIL

APT GROSS AREA	
	AREA
BALCONY	170.2
INTERIOR GROSS AREA	600.6
TOTAL	770.8 ft <sup>2</sup>



**KEY PLAN**



A
**1BD UNIT A**  
 SCALE: 1/4" = 1'-0"

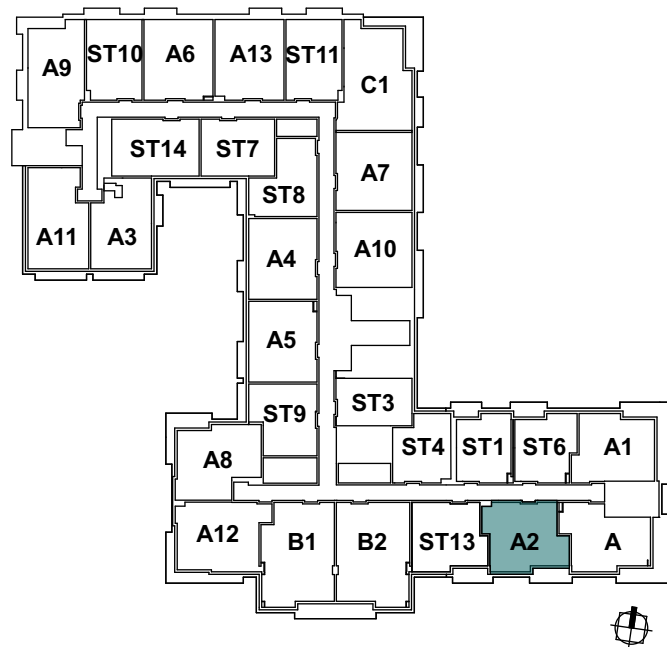


**FORM GROUP, INC.**  
 6740 SW 64 CT, MIAMI, FL 33143  
 TEL. 305.443.4244 FX. 305.443.3338  
 ARCHITECT OF RECORD:  
 OMAR MORALES, AIA  
 AA-0014851

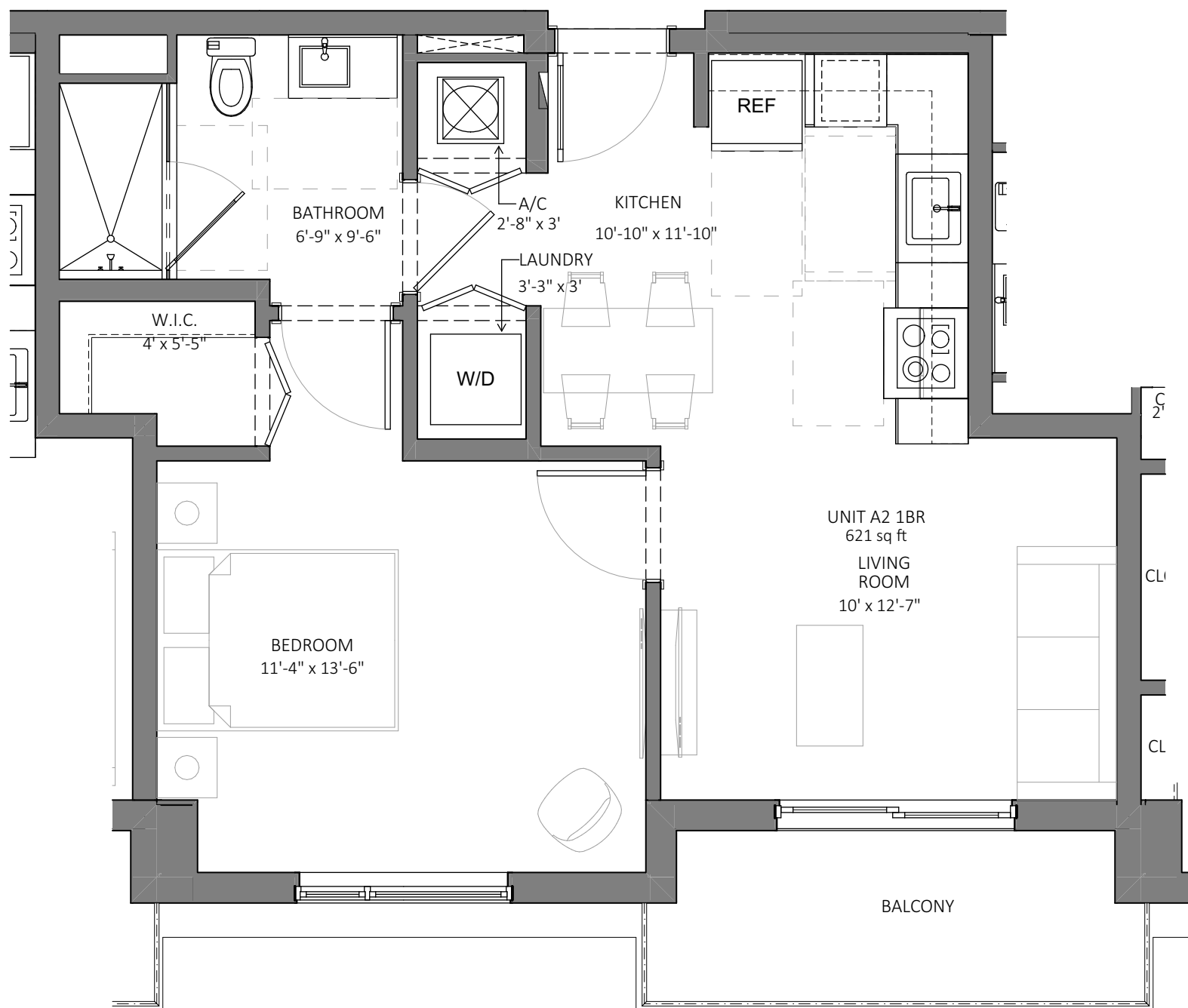
THE ABOVE FORMAT, TECHNIQUE AND DESIGN ARE THE PROPERTY OF FORM GROUP, INC. NO PART THEREOF SHALL BE COPIED, DISCLOSED OR USED IN WHOLE OR IN PART WITHOUT THE WRITTEN CONSENT OF THE ARCHITECT.

**PROJECT NO.** 23-0310      **TITLE:** TYPE A  
**DATE:** NOVEMBER 15, 2022  
**SCALE:** AS SHOWN      **DRAWING NO.:** UNIT DETAIL

APT GROSS AREA	
	AREA
BALCONY	66.3
INTERIOR GROSS AREA	620.8
TOTAL	687.1 ft <sup>2</sup>



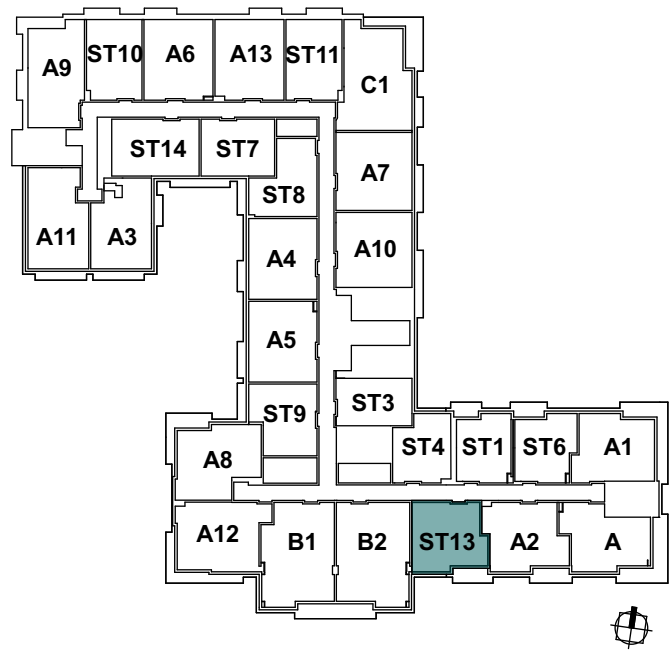
KEY PLAN



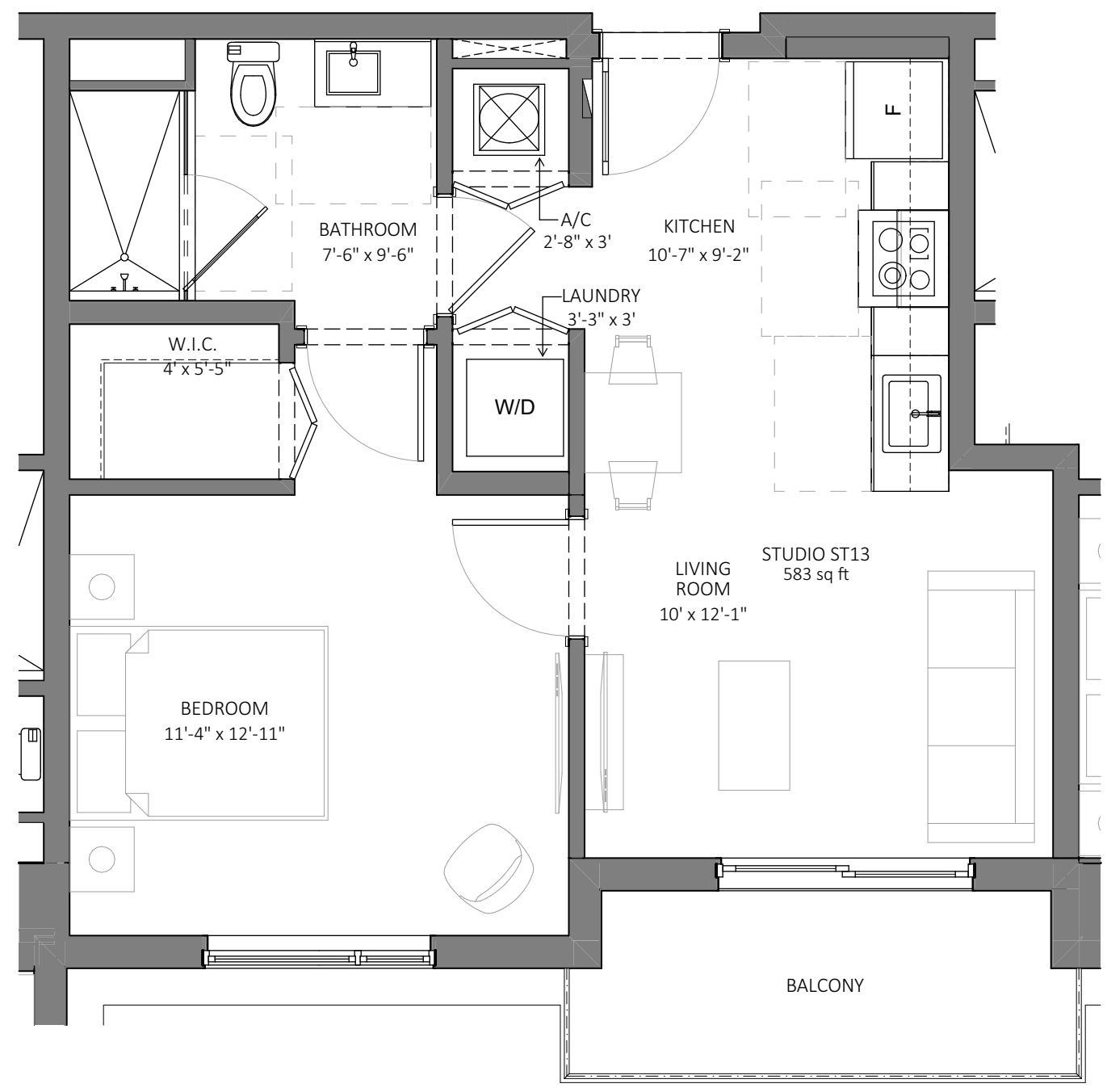
**A2** 1BD UNIT A2  
SCALE: 1/4" = 1'-0"



APT GROSS AREA	
	AREA
BALCONY	63.1
INTERIOR GROSS AREA	583.2
TOTAL	646.3 ft <sup>2</sup>



**KEY PLAN**



ST13
**STUDIO UNIT ST13**  
 SCALE: 1/4" = 1'-0"

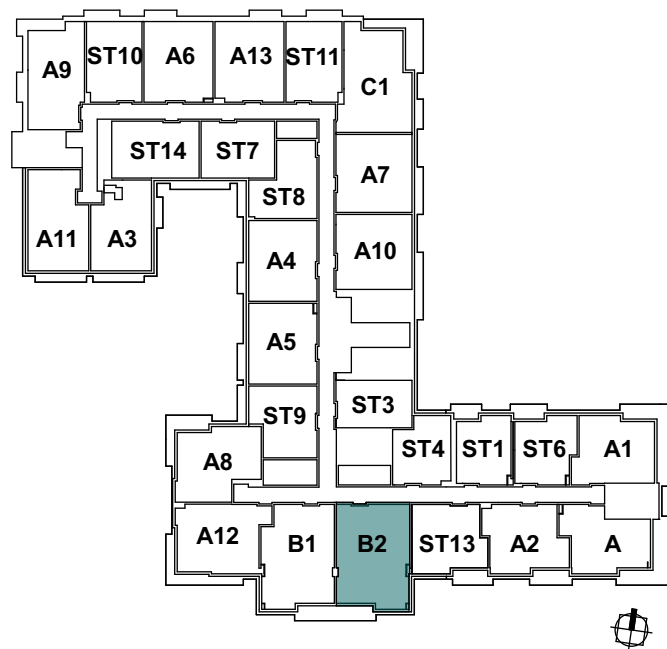


**FORM GROUP, INC.**  
 6740 SW 64 CT, MIAMI, FL 33143  
 TEL. 305.443.4244 FX. 305.443.3338  
 ARCHITECT OF RECORD:  
 OMAR MORALES, AIA  
 AA-0014851

THE ABOVE FORMAT, TECHNIQUE AND DESIGN ARE THE PROPERTY OF FORM GROUP, INC. NO PART THEREOF SHALL BE COPIED, DISCLOSED OR USED IN WHOLE OR IN PART WITHOUT THE WRITTEN CONSENT OF THE ARCHITECT.

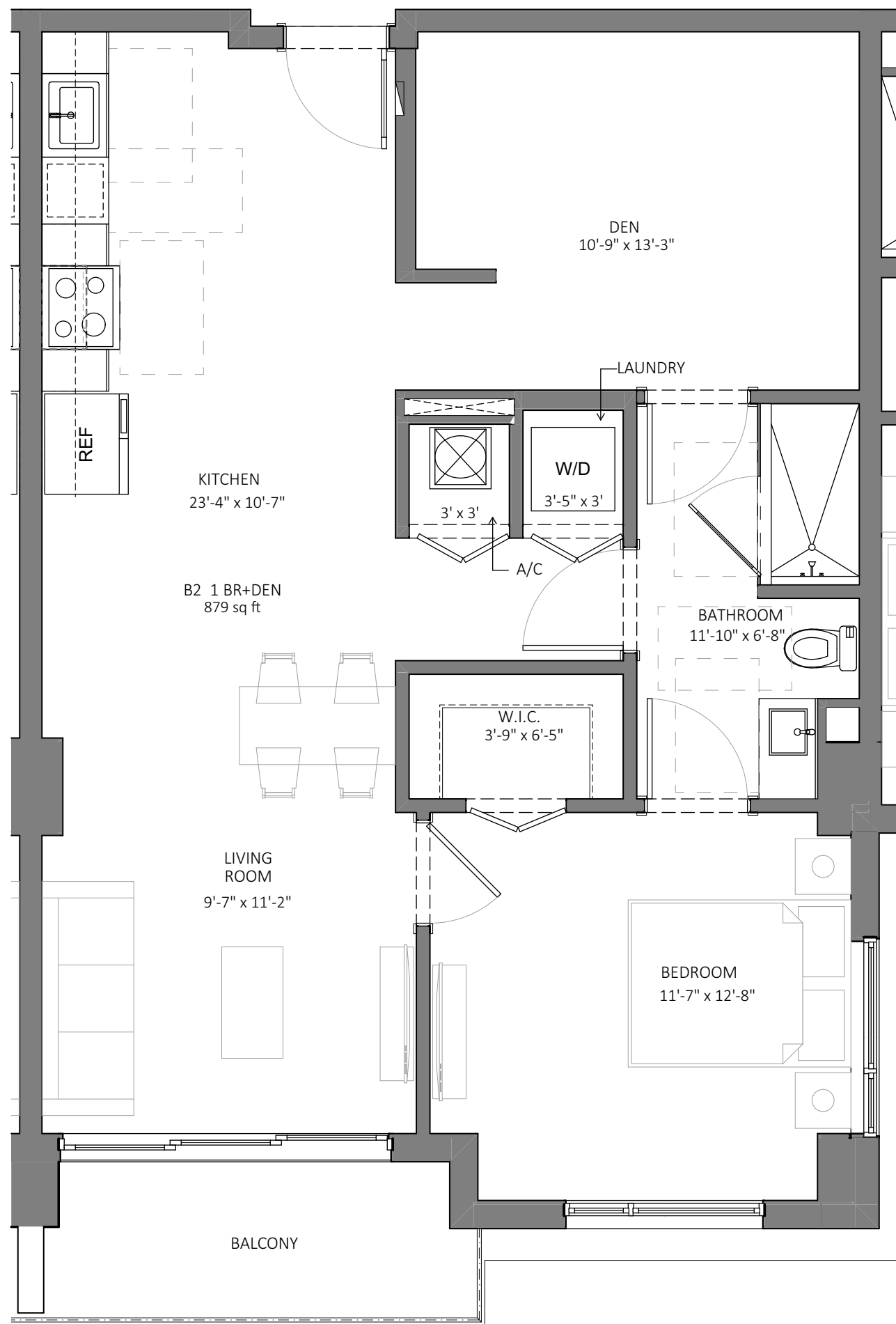
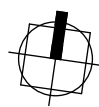
**PROJECT NO.** 23-0310      **TITLE:** TYPE ST13  
**DATE:** NOVEMBER 15, 2022  
**SCALE:** AS SHOWN      **DRAWING NO.:** UNIT DETAIL

APT GROSS AREA	
	AREA
BALCONY	62.3
INTERIOR GROSS AREA	878.9
TOTAL	941.2 ft <sup>2</sup>



KEY PLAN

**B2** 1BD+DEN UNIT B2  
SCALE: 1/4" = 1'-0"



DEVELOPER:



MSIRE  
EVP | Acquisitions & Asset Management  
Tel. 561-752-6635 | Fax. 305-476-8199  
altadevelopment.com  
9155 S. Dadeland Blvd, 1506  
Miami, Florida 33156



**FORM GROUP, INC.**  
6740 SW 64 CT, MIAMI, FL 33143  
TEL. 305.443.4244 FX. 305.443.3338

ARCHITECT OF RECORD:  
OMAR MORALES, AIA  
AA-0014851

THE ABOVE FORMAT, TECHNIQUE AND DESIGN ARE THE PROPERTY OF FORM GROUP, INC. NO PART THEREOF SHALL BE COPIED, DISCLOSED OR USED IN WHOLE OR IN PART WITHOUT THE WRITTEN CONSENT OF THE ARCHITECT.

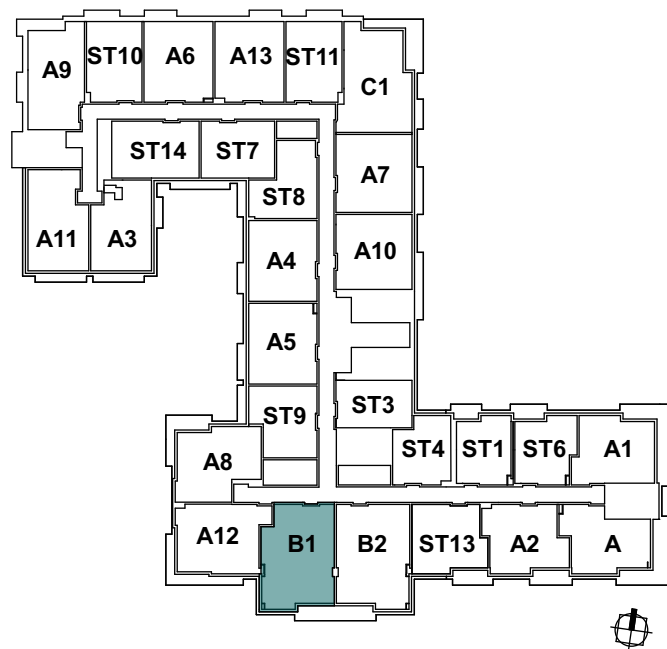
PROJECT NO. 23-0310 TITLE: B2

DATE: NOVEMBER 15, 2022

SCALE: AS SHOWN DRAWING NO.: UNIT DETAIL

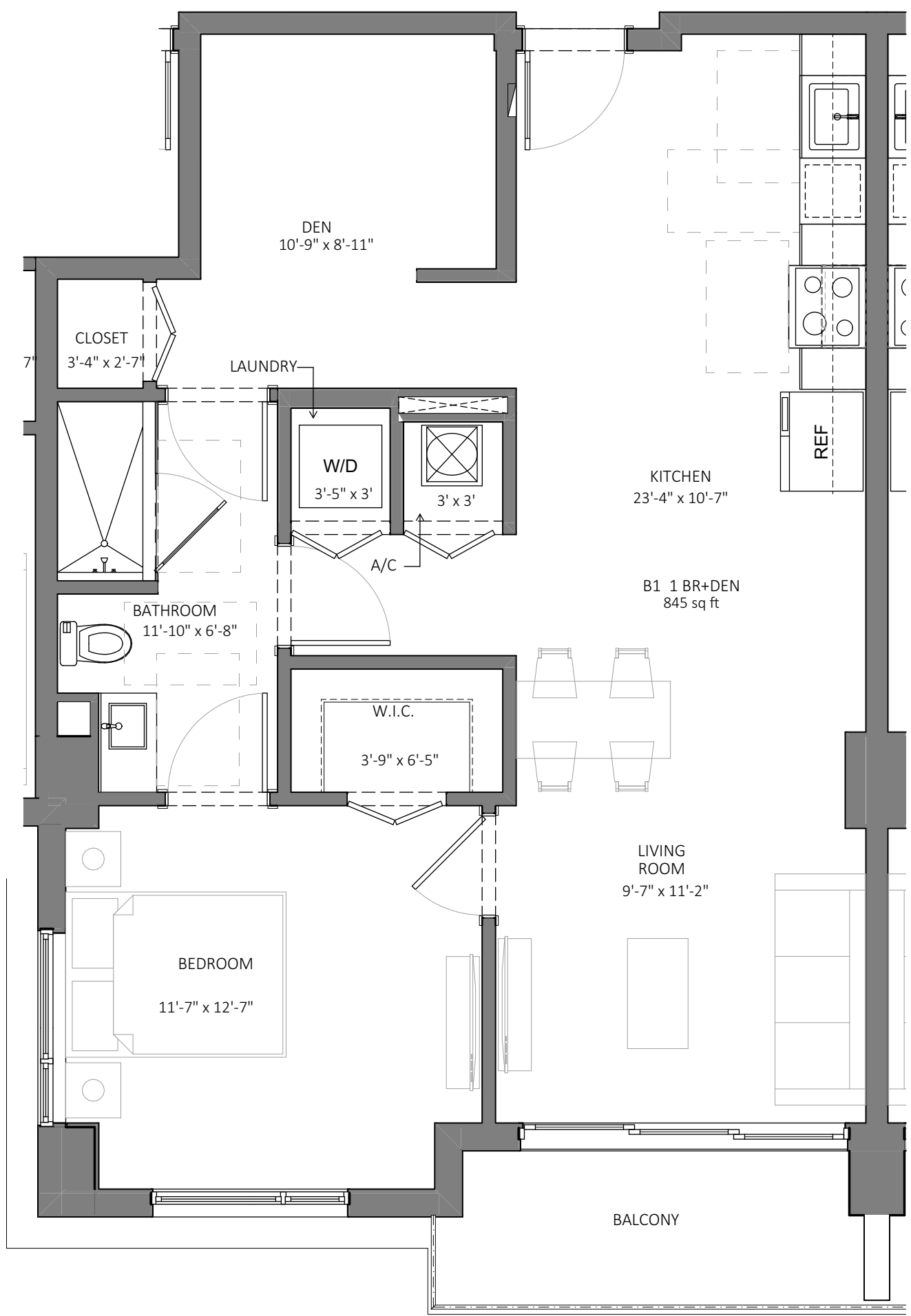
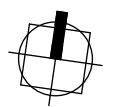


APT GROSS AREA	
	AREA
BALCONY	62.3
INTERIOR GROSS AREA	845.3
<b>TOTAL</b>	<b>907.6 ft<sup>2</sup></b>



KEY PLAN

**B1** 1BD+DEN UNIT B1  
SCALE: 1/4" = 1'-0"



**SW**  
**SOMI WALK**  
 RESIDENCES  
 5959 SW 71 ST.  
 SOUTH MIAMI, FL. 33143

DEVELOPER:  
  
**ALTA**  
 DEVELOPMENT

MSIRE  
 EVP | Acquisitions & Asset Management  
 Tel. 561-752-6635 | Fax. 305-476-8199  
 altadevelopment.com  
 9155 S. Dadeland Blvd, 1506  
 Miami, Florida 33156

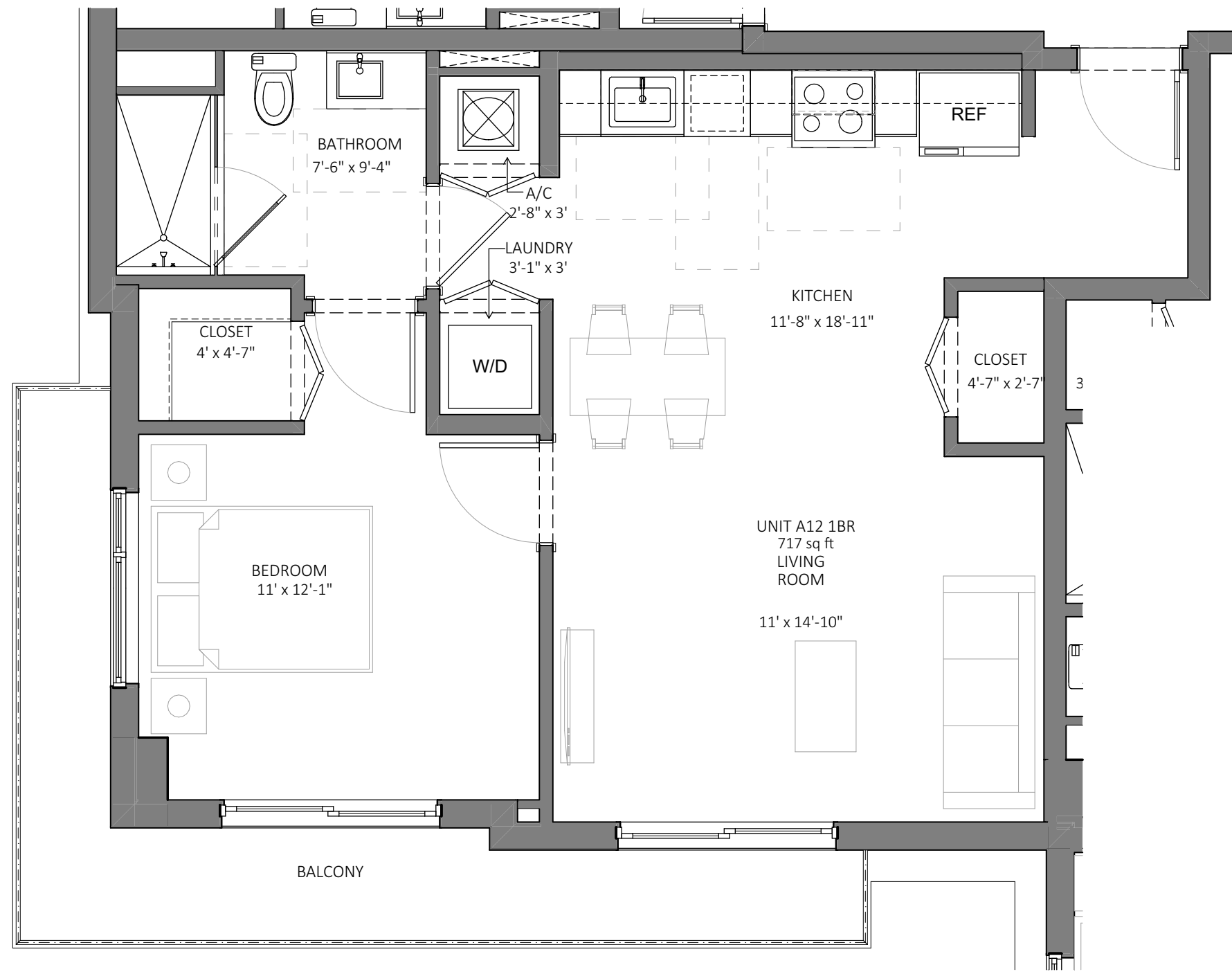
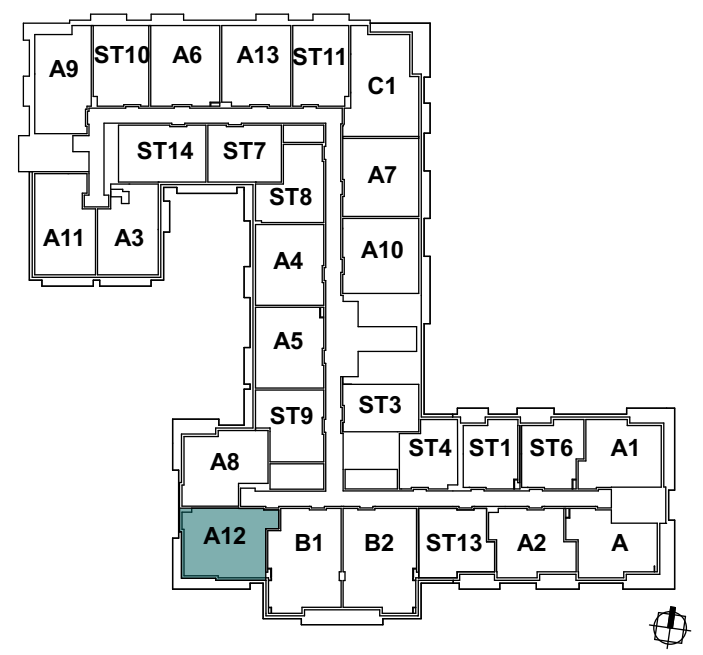


**FORM GROUP, INC.**  
 6740 SW 64 CT, MIAMI, FL 33143  
 TEL. 305.443.4244 FX. 305.443.3338  
 ARCHITECT OF RECORD:  
 OMAR MORALES, AIA  
 AA-0014851

THE ABOVE FORMAT, TECHNIQUE AND DESIGN ARE THE PROPERTY OF FORM GROUP, INC. NO PART THEREOF SHALL BE COPIED, DISCLOSED OR USED IN WHOLE OR IN PART WITHOUT THE WRITTEN CONSENT OF THE ARCHITECT.

PROJECT NO. 23-0310 TITLE: B1  
 DATE: NOVEMBER 15, 2022  
 SCALE: AS SHOWN DRAWING NO.: UNIT DETAIL

APT GROSS AREA	
	AREA
BALCONY	125.2
INTERIOR GROSS AREA	716.7
TOTAL	841.9 ft <sup>2</sup>



A12
**1BD UNIT A12**  
 SCALE: 1/4" = 1'-0"

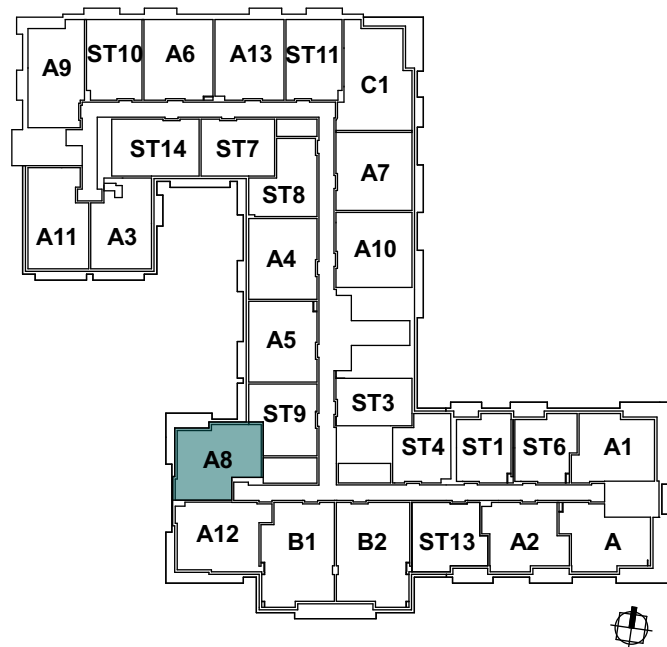


**FORM GROUP, INC.**  
 6740 SW 64 CT, MIAMI, FL 33143  
 TEL. 305.443.4244 FX. 305.443.3338  
 ARCHITECT OF RECORD:  
 OMAR MORALES, AIA  
 AA-0014851

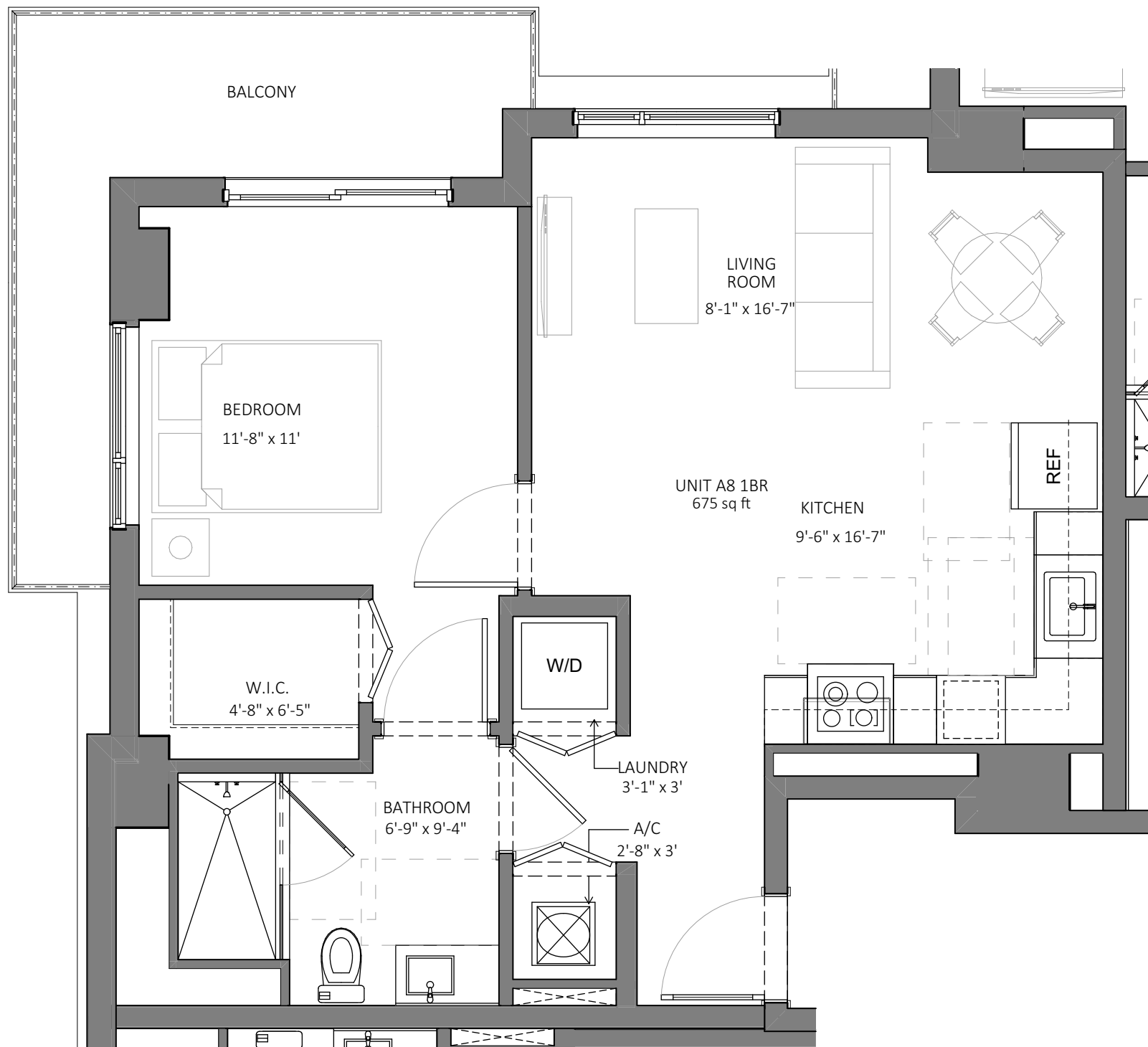
THE ABOVE FORMAT, TECHNIQUE AND DESIGN ARE THE PROPERTY OF FORM GROUP, INC. NO PART THEREOF SHALL BE COPIED, DISCLOSED OR USED IN WHOLE OR IN PART WITHOUT THE WRITTEN CONSENT OF THE ARCHITECT.

PROJECT NO. 23-0310      TITLE: TYPE A12  
 DATE: NOVEMBER 15, 2022  
 SCALE: AS SHOWN      DRAWING NO.: UNIT DETAIL

APT GROSS AREA	
	AREA
BALCONY	109.7
INTERIOR GROSS AREA	674.8
TOTAL	784.5 ft <sup>2</sup>



KEY PLAN



**A8** 1BD UNIT A8  
SCALE: 1/4" = 1'-0"

**SOMI WALK**  
RESIDENCES

5959 SW 71 ST.  
SOUTH MIAMI, FL. 33143

DEVELOPER:



MSIRE  
EVP | Acquisitions & Asset Management  
Tel. 561-752-6635 | Fax. 305-476-8199  
altadevelopment.com  
9155 S. Dadeland Blvd, 1506  
Miami, Florida 33156



**FORM GROUP, INC.**  
6740 SW 64 CT, MIAMI, FL 33143  
TEL. 305.443.4244 FX. 305.443.3338

ARCHITECT OF RECORD:  
OMAR MORALES, AIA  
AA-0014851

THE ABOVE FORMAT, TECHNIQUE AND DESIGN ARE THE PROPERTY OF FORM GROUP, INC. NO PART THEREOF SHALL BE COPIED, DISCLOSED OR USED IN WHOLE OR IN PART WITHOUT THE WRITTEN CONSENT OF THE ARCHITECT.

PROJECT NO.  
23-0310

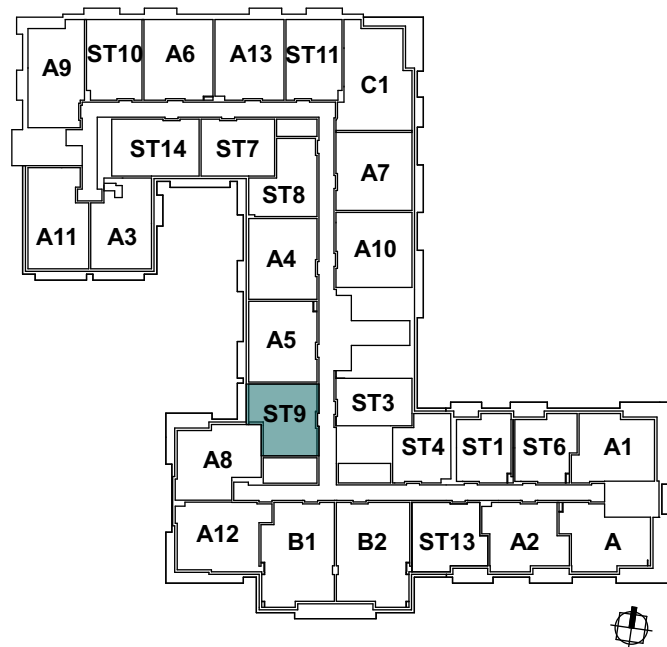
TITLE:  
TYPE A8

DATE:  
NOVEMBER 15, 2022

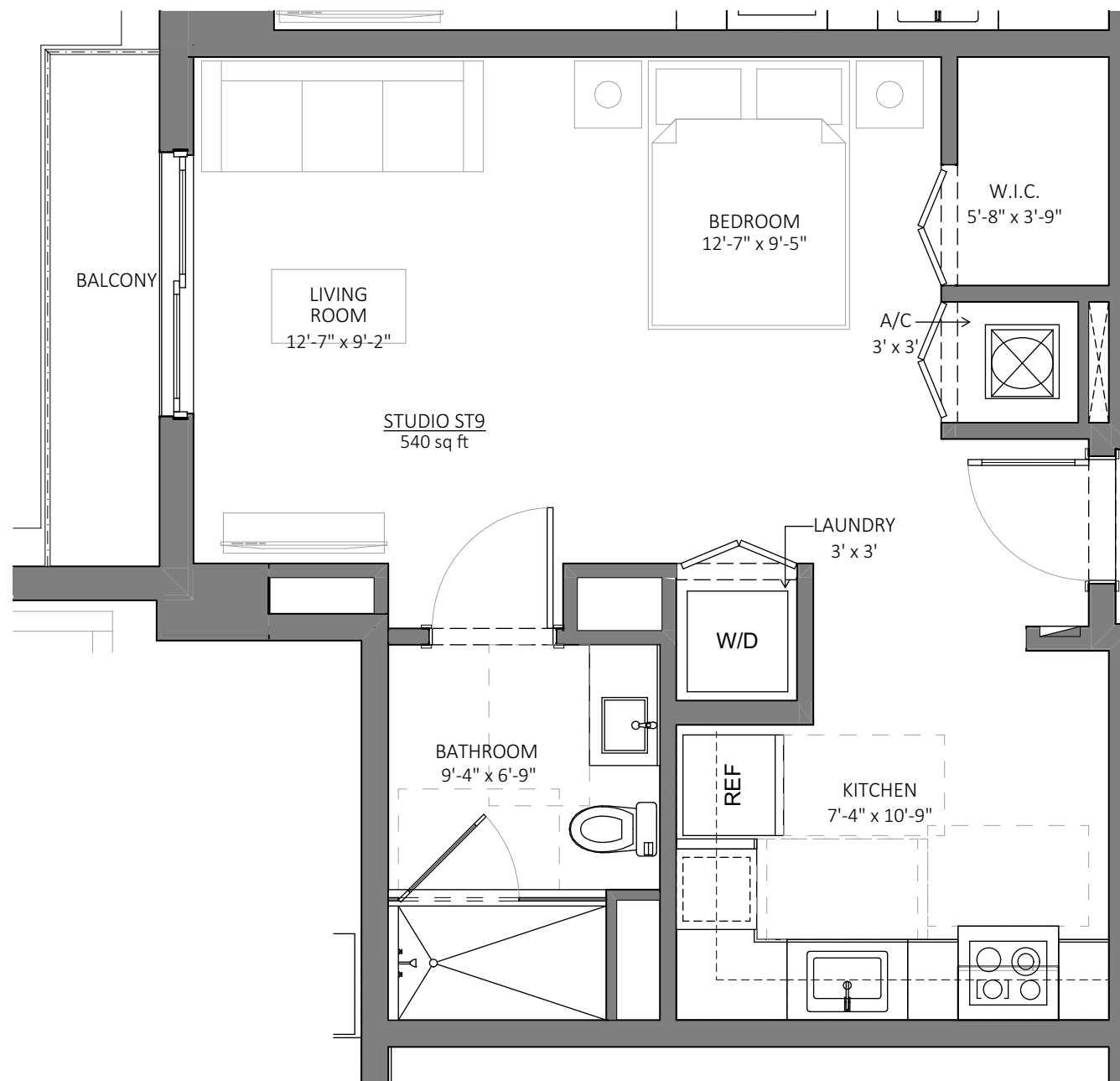
SCALE:  
AS SHOWN

DRAWING NO.:  
**UNIT  
DETAIL**

APT GROSS AREA	
	AREA
BALCONY	38.2
INTERIOR GROSS AREA	539.6
TOTAL	577.8 ft <sup>2</sup>



KEY PLAN



**ST9** STUDIO UNIT ST9  
SCALE: 1/4" = 1'-0"

**SOMI WALK**  
RESIDENCES

5959 SW 71 ST.  
SOUTH MIAMI, FL. 33143

DEVELOPER:



MSIRE  
EVP | Acquisitions & Asset Management  
Tel. 561-752-6635 | Fax. 305-476-8199  
altadevelopment.com  
9155 S. Dadeland Blvd, 1506  
Miami, Florida 33156



**FORM GROUP, INC.**  
6740 SW 64 CT, MIAMI, FL 33143  
TEL. 305.443.4244 FX. 305.443.3338

ARCHITECT OF RECORD:  
OMAR MORALES, AIA  
AA-0014851

THE ABOVE FORMAT, TECHNIQUE AND DESIGN ARE THE PROPERTY OF FORM GROUP, INC. NO PART THEREOF SHALL BE COPIED, DISCLOSED OR USED IN WHOLE OR IN PART WITHOUT THE WRITTEN CONSENT OF THE ARCHITECT.

PROJECT NO.  
23-0310

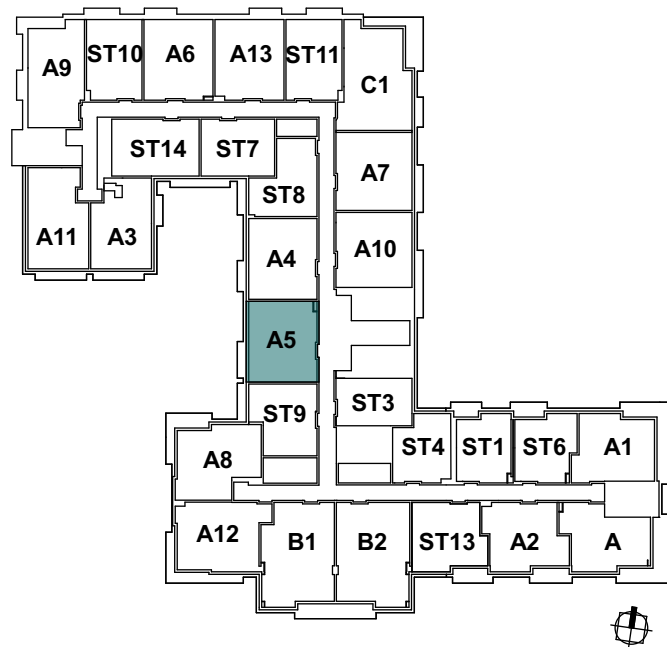
TITLE:  
TYPE ST9

DATE:  
NOVEMBER 15, 2022

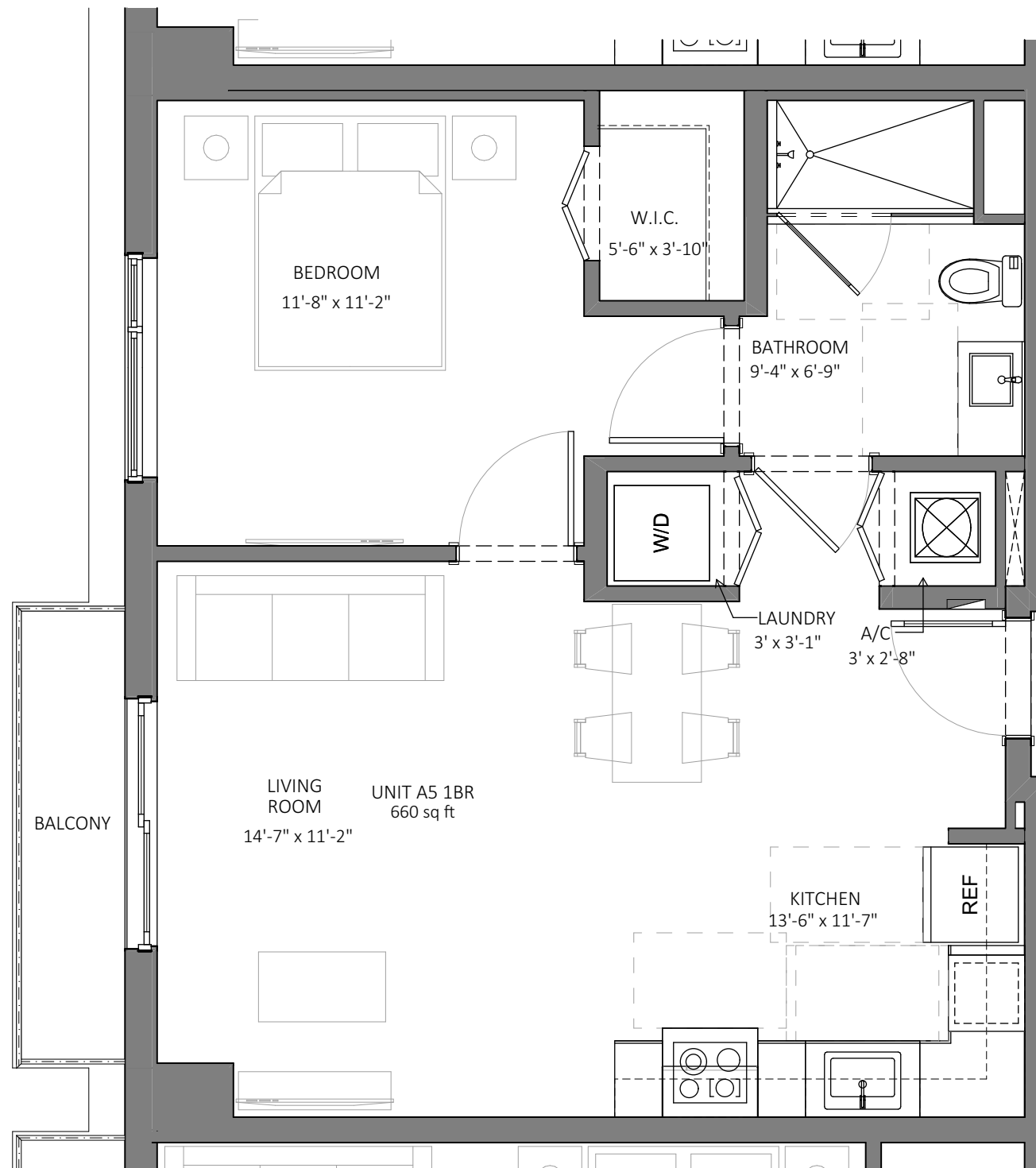
SCALE:  
AS SHOWN

DRAWING NO.:  
**UNIT  
DETAIL**

APT GROSS AREA	
	AREA
BALCONY	35.8
INTERIOR GROSS AREA	659.9
<b>TOTAL</b>	<b>695.7 ft<sup>2</sup></b>



KEY PLAN



**A5** 1BD UNIT A5  
SCALE: 1/4" = 1'-0"

**SW**  
**SOMI WALK**  
RESIDENCES  
5959 SW 71 ST.  
SOUTH MIAMI, FL. 33143

DEVELOPER:  
**ALTA**  
DEVELOPMENT

MSIRE  
EVP | Acquisitions & Asset Management  
Tel. 561-752-6635 | Fax. 305-476-8199  
altadevelopment.com  
9155 S. Dadeland Blvd, 1506  
Miami, Florida 33156

**FORMGROUP**  
architecture .planning

**FORM GROUP, INC.**  
6740 SW 64 CT, MIAMI, FL 33143  
TEL. 305.443.4244 FX. 305.443.3338  
ARCHITECT OF RECORD:  
OMAR MORALES, AIA  
AA-0014851

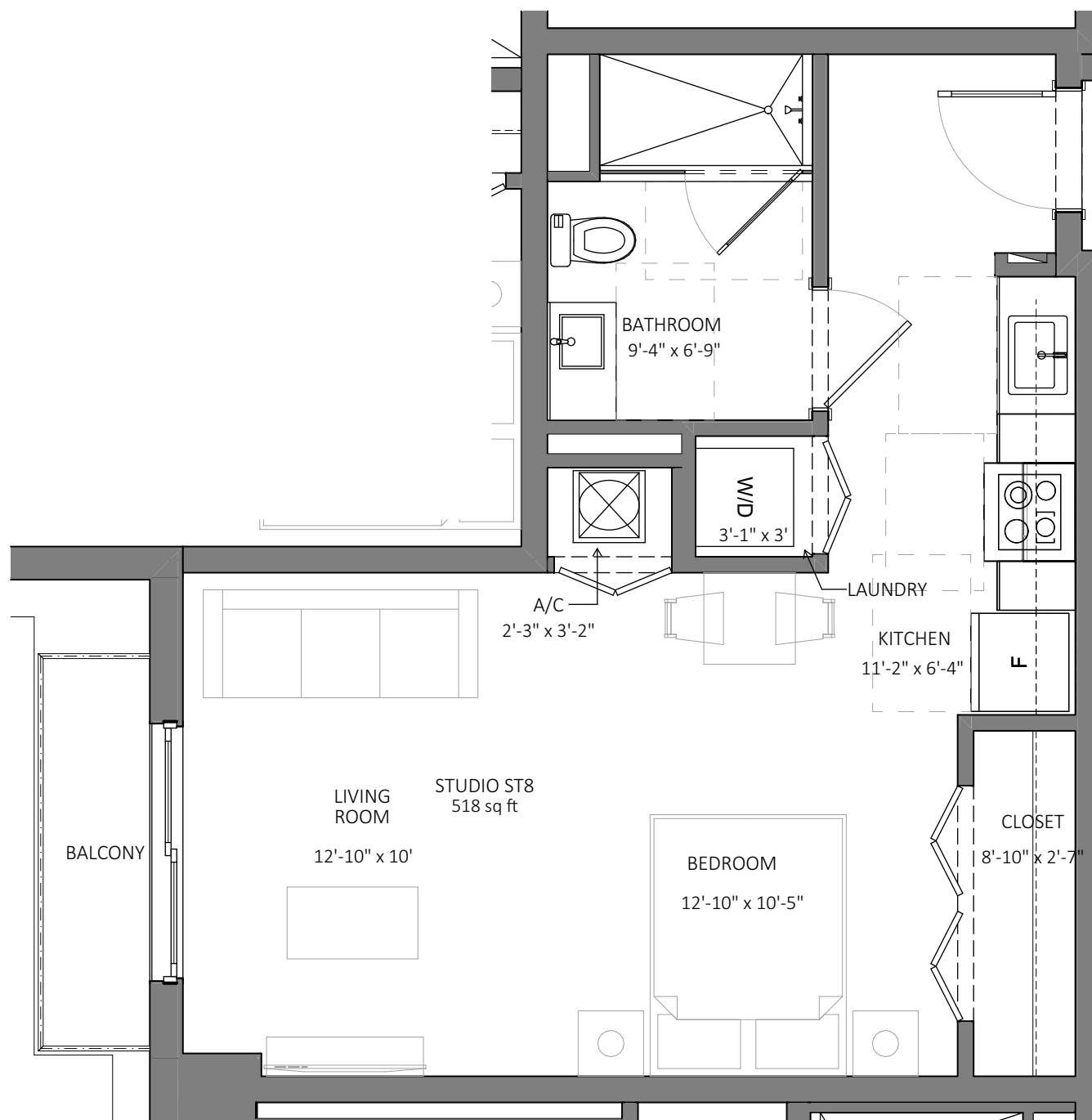
THE ABOVE FORMAT, TECHNIQUE AND DESIGN ARE THE PROPERTY OF FORM GROUP, INC. NO PART THEREOF SHALL BE COPIED, DISCLOSED OR USED IN WHOLE OR IN PART WITHOUT THE WRITTEN CONSENT OF THE ARCHITECT.

PROJECT NO. 23-0310 TITLE: TYPE A5  
DATE: NOVEMBER 15, 2022  
SCALE: AS SHOWN DRAWING NO.: UNIT DETAIL

GROSS APT AREA	
	AREA
BALCONY	32.9
INTERIOR GROSS AREA	518.3
TOTAL	551.2 ft <sup>2</sup>



KEY PLAN (LEVEL 7-15)



**ST8** STUDIO UNIT ST8  
SCALE: 1/4" = 1'-0"

**SW**  
**SOMI WALK**  
RESIDENCES  
5959 SW 71 ST.  
SOUTH MIAMI, FL. 33143

DEVELOPER:  
**ALTA**  
DEVELOPMENT

MSIRE  
EVP | Acquisitions & Asset Management  
Tel. 561-752-6635 | Fax. 305-476-8199  
altadevelopment.com  
9155 S. Dadeland Blvd, 1506  
Miami, Florida 33156

**FORMGROUP**  
architecture .planning

**FORM GROUP, INC.**  
6740 SW 64 CT, MIAMI, FL 33143  
TEL. 305.443.4244 FX. 305.443.3338  
ARCHITECT OF RECORD:  
OMAR MORALES, AIA  
AA-0014851

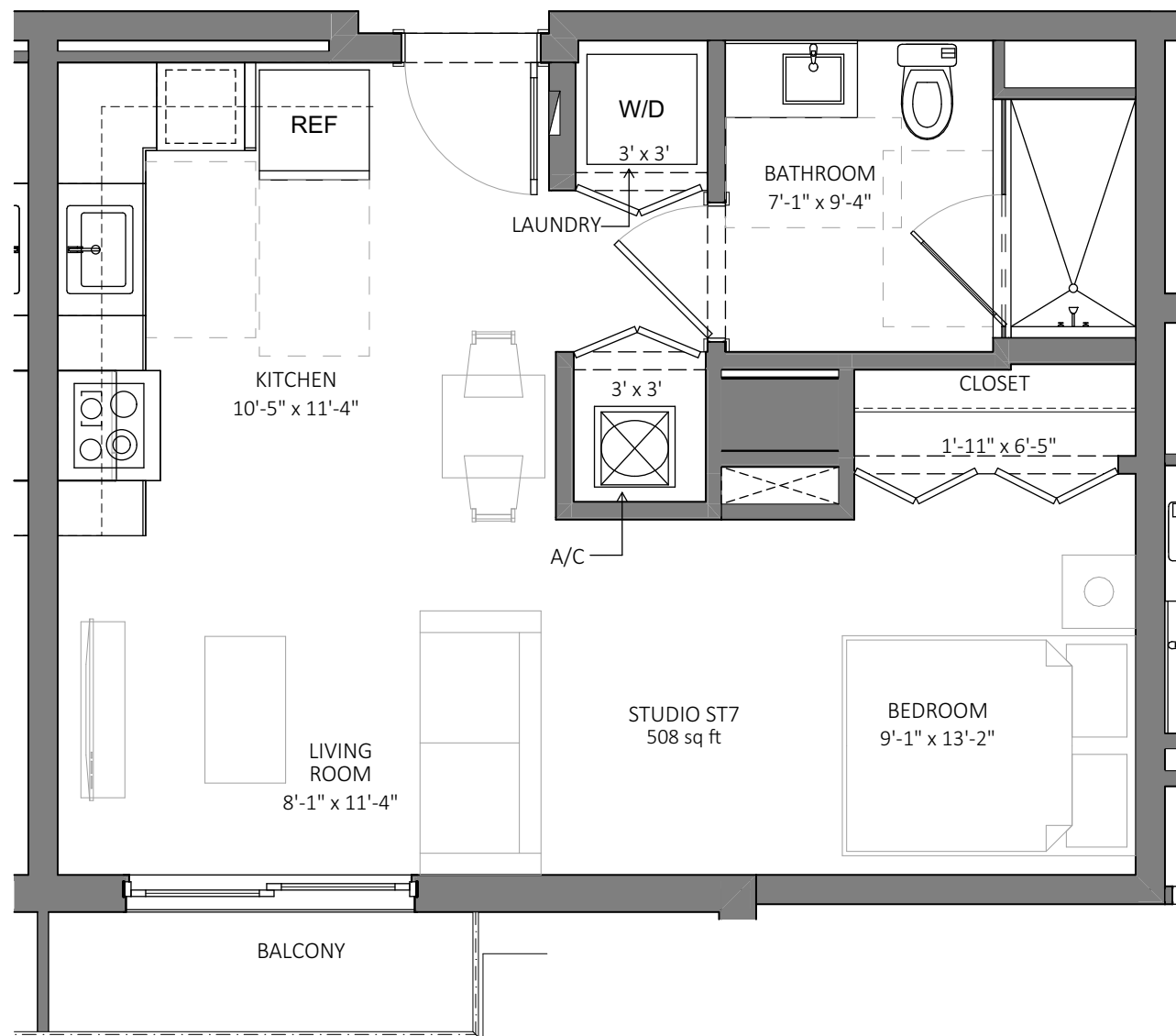
THE ABOVE FORMAT, TECHNIQUE AND DESIGN ARE THE PROPERTY OF FORM GROUP, INC. NO PART THEREOF SHALL BE COPIED, DISCLOSED OR USED IN WHOLE OR IN PART WITHOUT THE WRITTEN CONSENT OF THE ARCHITECT.

PROJECT NO. 23-0310 TITLE: TYPE ST8  
DATE: NOVEMBER 15, 2022  
SCALE: AS SHOWN DRAWING NO.: UNIT DETAIL

GROSS APT AREA	
	AREA
BALCONY	29.1
INTERIOR GROSS AREA	507.5
TOTAL	536.6 ft <sup>2</sup>



KEY PLAN (LEVEL 7-15)



**ST7** STUDIO UNIT ST7  
SCALE: 1/4" = 1'-0"

**SOMI WALK**  
RESIDENCES  
5959 SW 71 ST.  
SOUTH MIAMI, FL. 33143

DEVELOPER:  
**ALTA**  
DEVELOPMENT

MSIRE  
EVP | Acquisitions & Asset Management  
Tel. 561-752-6635 | Fax. 305-476-8199  
altadevelopment.com  
9155 S. Dadeland Blvd, 1506  
Miami, Florida 33156

**FORMGROUP**  
architecture .planning

**FORM GROUP, INC.**  
6740 SW 64 CT, MIAMI, FL 33143  
TEL. 305.443.4244 FX. 305.443.3338  
ARCHITECT OF RECORD:  
OMAR MORALES, AIA  
AA-0014851

THE ABOVE FORMAT, TECHNIQUE AND DESIGN ARE THE PROPERTY OF FORM GROUP, INC. NO PART THEREOF SHALL BE COPIED, DISCLOSED OR USED IN WHOLE OR IN PART WITHOUT THE WRITTEN CONSENT OF THE ARCHITECT.

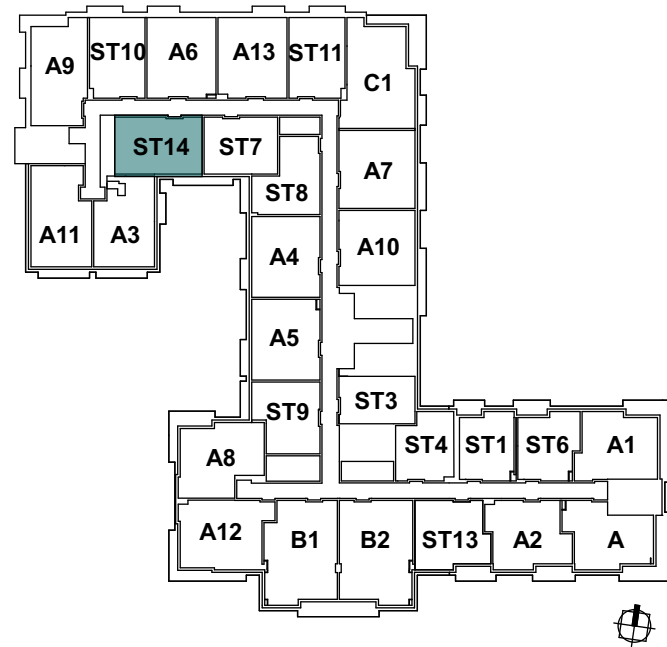
PROJECT NO. 23-0310 TITLE: TYPE ST7  
DATE: NOVEMBER 15, 2022  
SCALE: AS SHOWN DRAWING NO.: UNIT DETAIL

DEVELOPER:

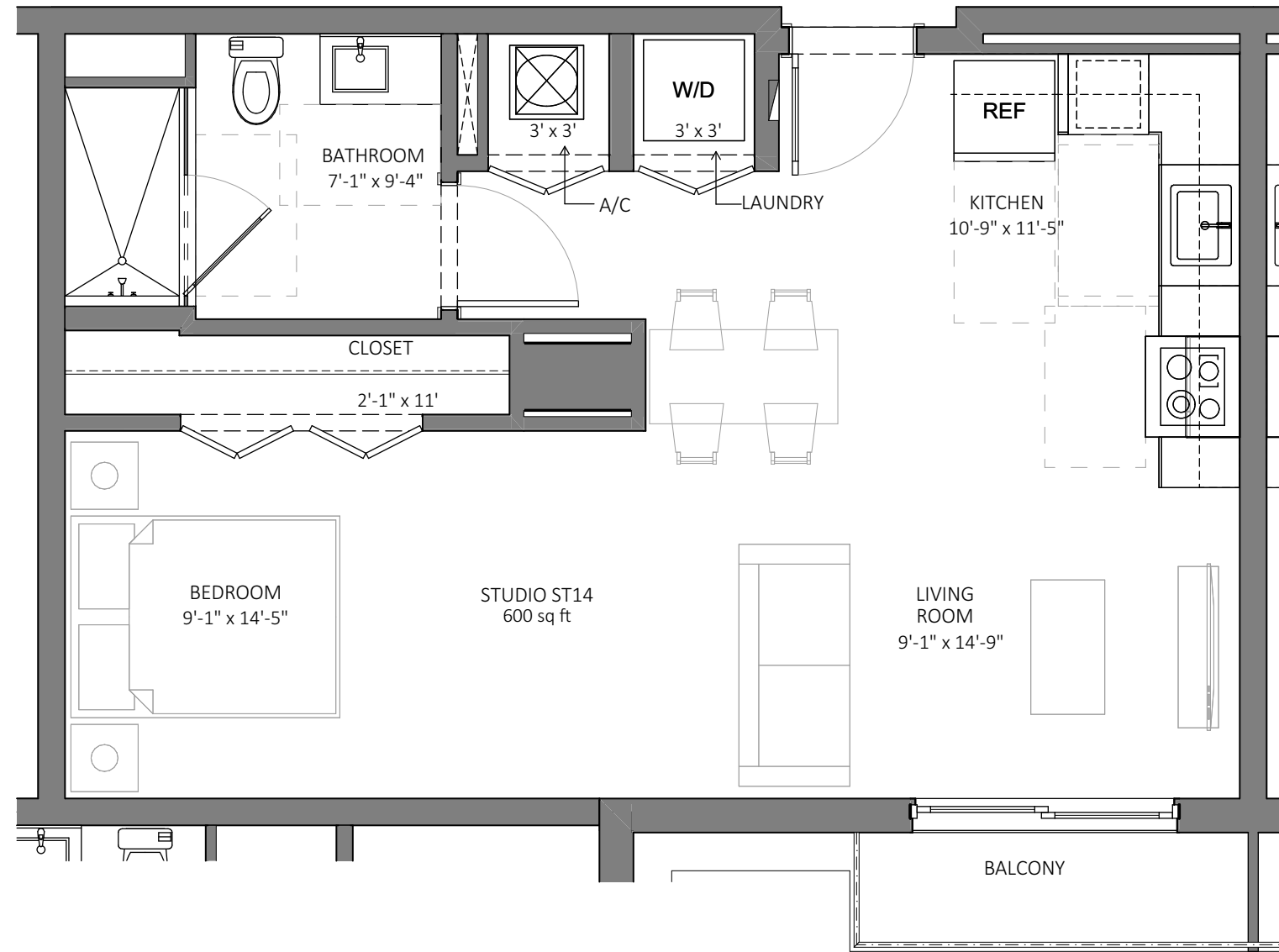


MSIRE  
 EVP | Acquisitions & Asset Management  
 Tel. 561-752-6635 | Fax. 305-476-8199  
 altadevelopment.com  
 9155 S. Dadeland Blvd, 1506  
 Miami, Florida 33156

<b>APT GROSS AREA</b>	
	<b>AREA</b>
BALCONY	29.1
INTERIOR GROSS AREA	599.8
<b>TOTAL</b>	<b>628.9 ft<sup>2</sup></b>



**KEY PLAN**



ST14
**STUDIO UNIT ST14**  
 SCALE: 1/4" = 1'-0"



**FORMGROUP**  
 architecture .planning

**FORM GROUP, INC.**  
 6740 SW 64 CT, MIAMI, FL 33143  
 TEL. 305.443.4244 FX. 305.443.3338

ARCHITECT OF RECORD:  
 OMAR MORALES, AIA  
 AA-0014851

THE ABOVE FORMAT, TECHNIQUE AND DESIGN ARE THE PROPERTY OF FORM GROUP, INC. NO PART THEREOF SHALL BE COPIED, DISCLOSED OR USED IN WHOLE OR IN PART WITHOUT THE WRITTEN CONSENT OF THE ARCHITECT.

**PROJECT NO.** 23-0310      **TITLE:** TYPE ST14

**DATE:** NOVEMBER 15, 2022

**SCALE:** AS SHOWN      **DRAWING NO.:** UNIT  
 DETAIL