



FLOOR PLANS

pier SIXTY-SIX  
RESIDENCES

pier SIXTY-SIX  
 RESIDENCES

RESORT  
 RESIDENCES

C

3 BEDROOMS  
 3 BATHROOMS

Interior  
 1,645 SQFT  
 152.8 SM

Terrace  
 86 SQFT  
 8.0 SM

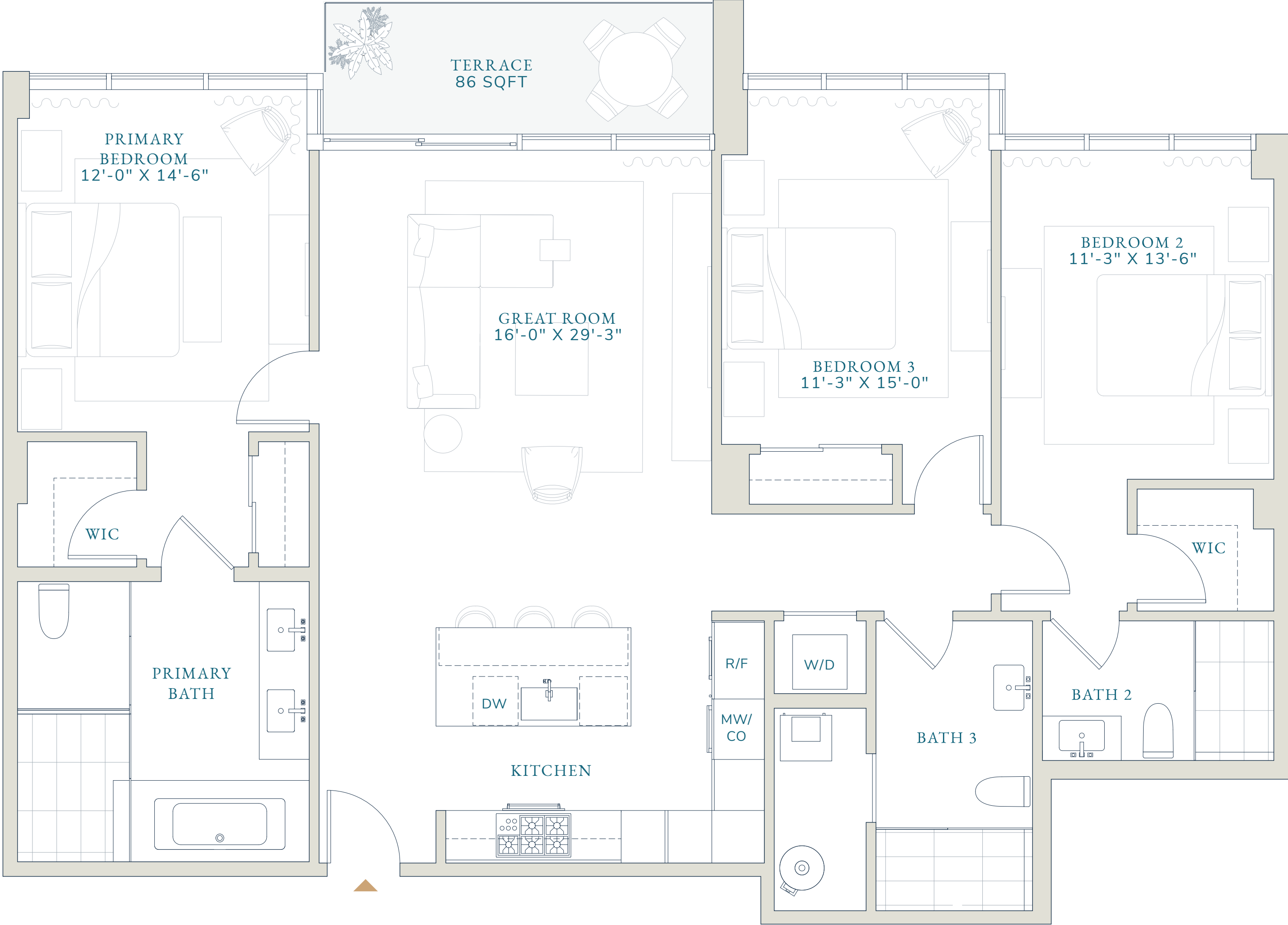
Total  
 1,731 SQFT  
 160.8 SM



RESORT  
 RESIDENCE 1



RESORT  
 RESIDENCE 2



Stated dimensions are measured to the exterior boundaries of the exterior walls and the centerline of interior demising walls (without deductions for interior columns, shear walls or shafts) and in fact vary from the dimensions that would be determined by using the description and definition of the "Unit" set forth in the Declaration (which generally only includes the interior airspace between the perimeter walls and excludes interior structural components, shear walls and shafts). For the calculation of the unit area following the definition of the unit set forth in the Declaration, see Exhibit "3" of the Declaration. Additionally, measurements of rooms set forth on any floor plan are generally taken at the greatest points of each given room (as if the room were a perfect rectangle), without regard for any cutouts. Accordingly, the area of the actual room will typically be smaller than the product obtained by multiplying the stated length times width. All dimensions are approximate, and all floor plans and development plans are subject to change. Designed by Signature Creative.

pier SIXTY-SIX  
 RESIDENCES

RESORT  
 RESIDENCES

D

2 BEDROOMS  
 3 BATHROOMS

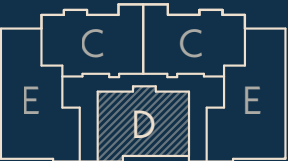
Interior  
 1,738 SQFT  
 161.5 SM

Terrace  
 320 SQFT  
 29.7 SM

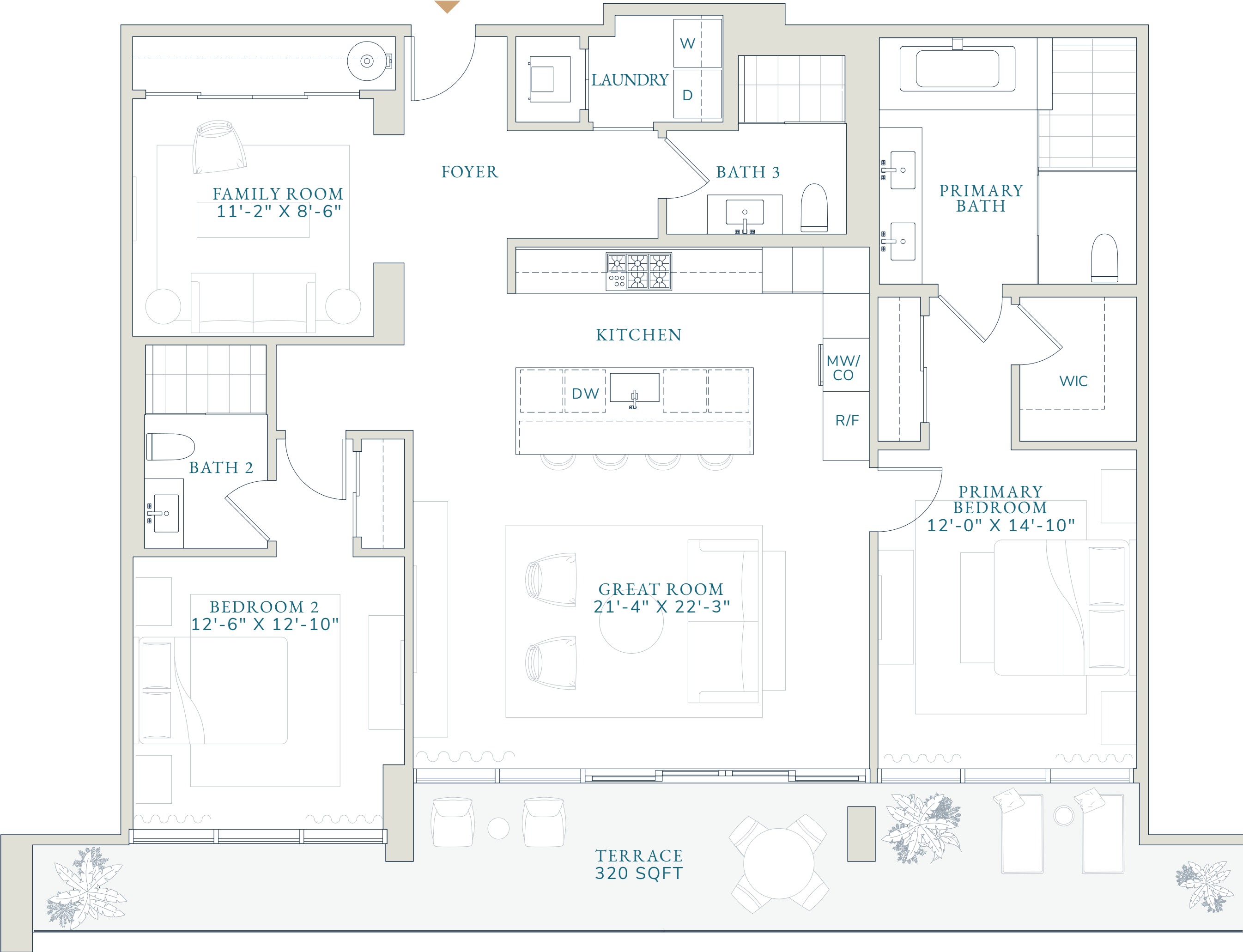
Total  
 2,058 SQFT  
 191.2 SM



RESORT  
 RESIDENCE 1



RESORT  
 RESIDENCE 2



Stated dimensions are measured to the exterior boundaries of the exterior walls and the centerline of interior demising walls (without deductions for interior columns, shear walls or shafts) and in fact vary from the dimensions that would be determined by using the description and definition of the "Unit" set forth in the Declaration (which generally only includes the interior airspace between the perimeter walls and excludes interior structural components, shear walls and shafts). For the calculation of the unit area following the definition of the unit set forth in the Declaration, see Exhibit "3" of the Declaration. Additionally, measurements of rooms set forth on any floor plan are generally taken at the greatest points of each given room (as if the room were a perfect rectangle), without regard for any cutouts. Accordingly, the area of the actual room will typically be smaller than the product obtained by multiplying the stated length times width. All dimensions are approximate, and all floor plans and development plans are subject to change. Designed by Signature Creative.

pier SIXTY-SIX  
 RESIDENCES

RESORT  
 RESIDENCES

E

3 BEDROOMS  
 3.5 BATHROOMS

Interior  
 2,205 SQFT  
 204.9 SM

Terrace  
 828 SQFT  
 77.0 SM

Total  
 3,033 SQFT  
 281.8 SM

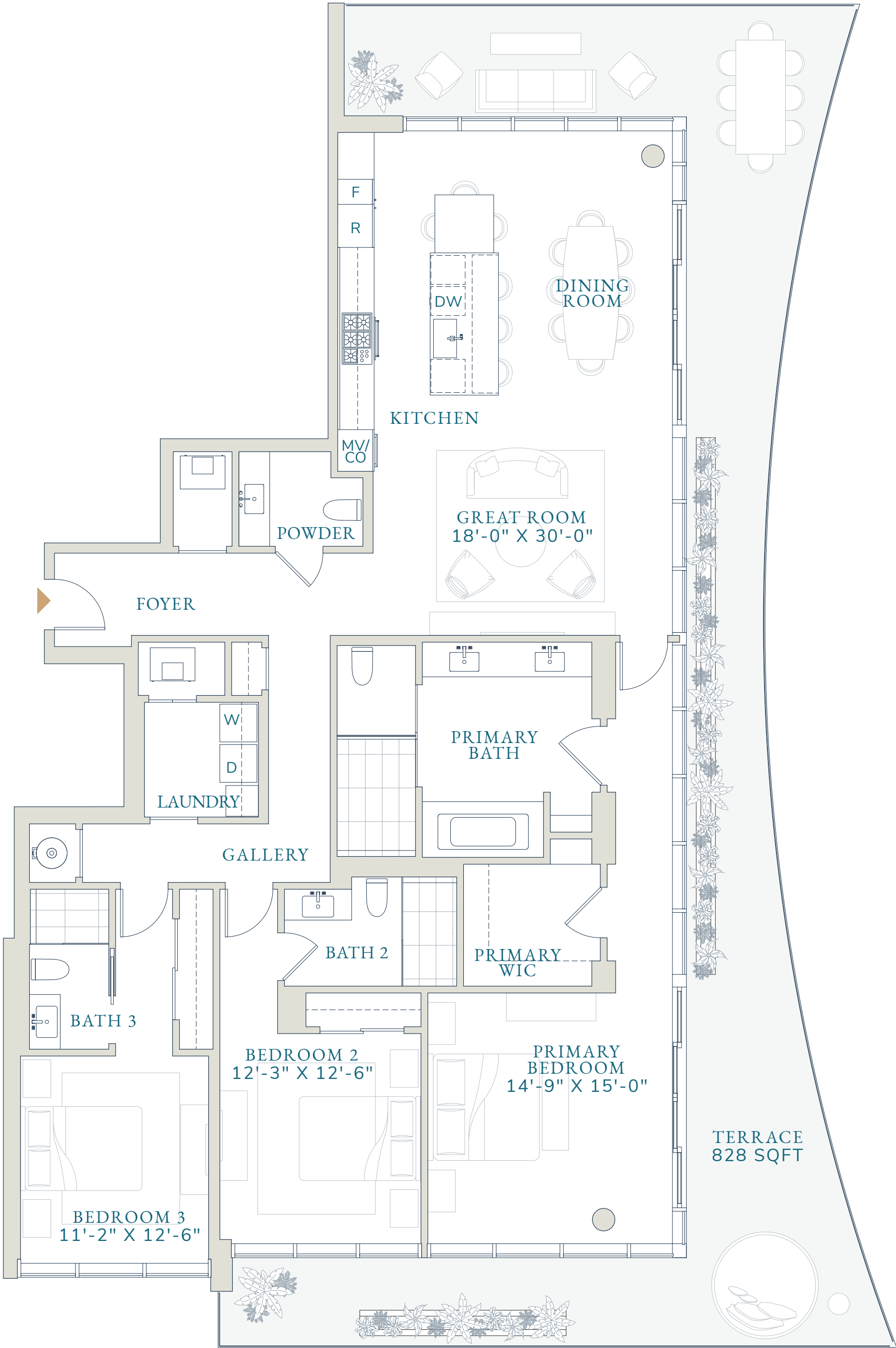


RESORT  
 RESIDENCE 1



RESORT  
 RESIDENCE 2

WATER VIEW



0' 3' 6' 12'



Stated dimensions are measured to the exterior boundaries of the exterior walls and the centerline of interior demising walls (without deductions for interior columns, shear walls or shafts) and in fact vary from the dimensions that would be determined by using the description and definition of the "Unit" set forth in the Declaration (which generally only includes the interior airspace between the perimeter walls and excludes interior structural components, shear walls and shafts). For the calculation of the unit area following the definition of the unit set forth in the Declaration, see Exhibit "3" of the Declaration. Additionally, measurements of rooms set forth on any floor plan are generally taken at the greatest points of each given room (as if the room were a perfect rectangle), without regard for any cutouts. Accordingly, the area of the actual room will typically be smaller than the product obtained by multiplying the stated length times width. All dimensions are approximate, and all floor plans and development plans are subject to change. Designed by Signature Creative.





FLOOR PLANS

pier SIXTY-SIX  
RESIDENCES

pier SIXTY-SIX  
 RESIDENCES

AZUL CONDOMINIUM  
 RESIDENCES

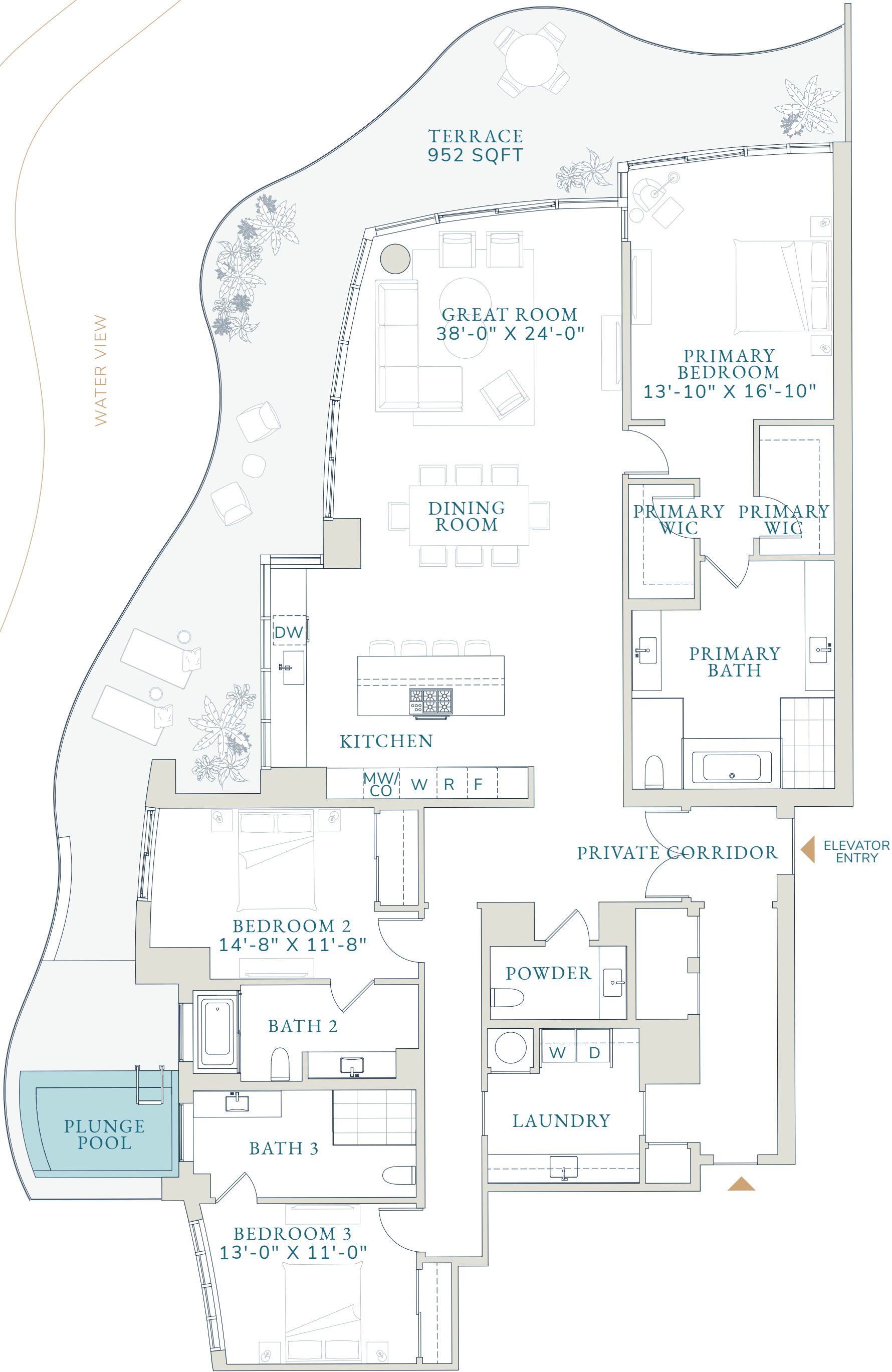
A

3 BEDROOMS  
 3.5 BATHROOMS

Interior  
 2,878 SQFT  
 267.4 SM

Terrace  
 952 SQFT  
 88.4 SM

Total  
 3,830 SQFT  
 355.8 SM



Stated dimensions are measured to the exterior boundaries of the exterior walls and the centerline of interior demising walls (without deductions for interior columns, shear walls or shafts) and in fact vary from the dimensions that would be determined by using the description and definition of the "Unit" set forth in the Declaration (which generally only includes the interior airspace between the perimeter walls and excludes interior structural components, shear walls and shafts). For the calculation of the unit area following the definition of the unit set forth in the Declaration, see Exhibit "3" of the Declaration. Additionally, measurements of rooms set forth on any floor plan are generally taken at the greatest points of each given room (as if the room were a perfect rectangle), without regard for any cutouts. Accordingly, the area of the actual room will typically be smaller than the product obtained by multiplying the stated length times width. All dimensions are approximate, and all floor plans and development plans are subject to change. Designed by Signature Creative.

pier SIXTY-SIX  
 RESIDENCES

AZUL CONDOMINIUM  
 RESIDENCES

B

3 BEDROOMS  
 3.5 BATHROOMS

Interior  
 2,878 SQFT  
 267.4 SM

Terrace  
 980 SQFT  
 91 SM

Total  
 3,858 SQFT  
 358.4 SM



Stated dimensions are measured to the exterior boundaries of the exterior walls and the centerline of interior demising walls (without deductions for interior columns, shear walls or shafts) and in fact vary from the dimensions that would be determined by using the description and definition of the "Unit" set forth in the Declaration (which generally only includes the interior airspace between the perimeter walls and excludes interior structural components, shear walls and shafts). For the calculation of the unit area following the definition of the unit set forth in the Declaration, see Exhibit "3" of the Declaration. Additionally, measurements of rooms set forth on any floor plan are generally taken at the greatest points of each given room (as if the room were a perfect rectangle), without regard for any cutouts. Accordingly, the area of the actual room will typically be smaller than the product obtained by multiplying the stated length times width. All dimensions are approximate, and all floor plans and development plans are subject to change. Designed by Signature Creative.

pier SIXTY-SIX  
 RESIDENCES

AZUL CONDOMINIUM  
 RESIDENCES

C

3 BEDROOMS  
 3.5 BATHROOMS

Interior  
 2,718 SQFT  
 252.5 SM

Terrace  
 917 SQFT  
 85.2 SM

Total  
 3,635 SQFT  
 337.7 SM

N



CONDOMINIUM  
 RESIDENCES



Stated dimensions are measured to the exterior boundaries of the exterior walls and the centerline of interior demising walls (without deductions for interior columns, shear walls or shafts) and in fact vary from the dimensions that would be determined by using the description and definition of the "Unit" set forth in the Declaration (which generally only includes the interior airspace between the perimeter walls and excludes interior structural components, shear walls and shafts). For the calculation of the unit area following the definition of the unit set forth in the Declaration, see Exhibit "3" of the Declaration. Additionally, measurements of rooms set forth on any floor plan are generally taken at the greatest points of each given room (as if the room were a perfect rectangle), without regard for any cutouts. Accordingly, the area of the actual room will typically be smaller than the product obtained by multiplying the stated length times width. All dimensions are approximate, and all floor plans and development plans are subject to change. Designed by Signature Creative.



pier SIXTY-SIX  
 RESIDENCES

AZUL CONDOMINIUM  
 RESIDENCES

D

3 BEDROOMS  
 3.5 BATHROOMS

Interior  
 2,718 SQFT  
 252.5 SM

Terrace  
 917 SQFT  
 85.2 SM

Total  
 3,635 SQFT  
 337.7 SM



CONDOMINIUM  
 RESIDENCES

WATER VIEW



0' 3' 6' 12'



Stated dimensions are measured to the exterior boundaries of the exterior walls and the centerline of interior demising walls (without deductions for interior columns, shear walls or shafts) and in fact vary from the dimensions that would be determined by using the description and definition of the "Unit" set forth in the Declaration (which generally only includes the interior airspace between the perimeter walls and excludes interior structural components, shear walls and shafts). For the calculation of the unit area following the definition of the unit set forth in the Declaration, see Exhibit "3" of the Declaration. Additionally, measurements of rooms set forth on any floor plan are generally taken at the greatest points of each given room (as if the room were a perfect rectangle), without regard for any cutouts. Accordingly, the area of the actual room will typically be smaller than the product obtained by multiplying the stated length times width. All dimensions are approximate, and all floor plans and development plans are subject to change. Designed by Signature Creative.





FLOOR PLANS

pier SIXTY-SIX

RESIDENCES

pier SIXTY-SIX  
 RESIDENCES

INDIGO CONDOMINIUM  
 RESIDENCES

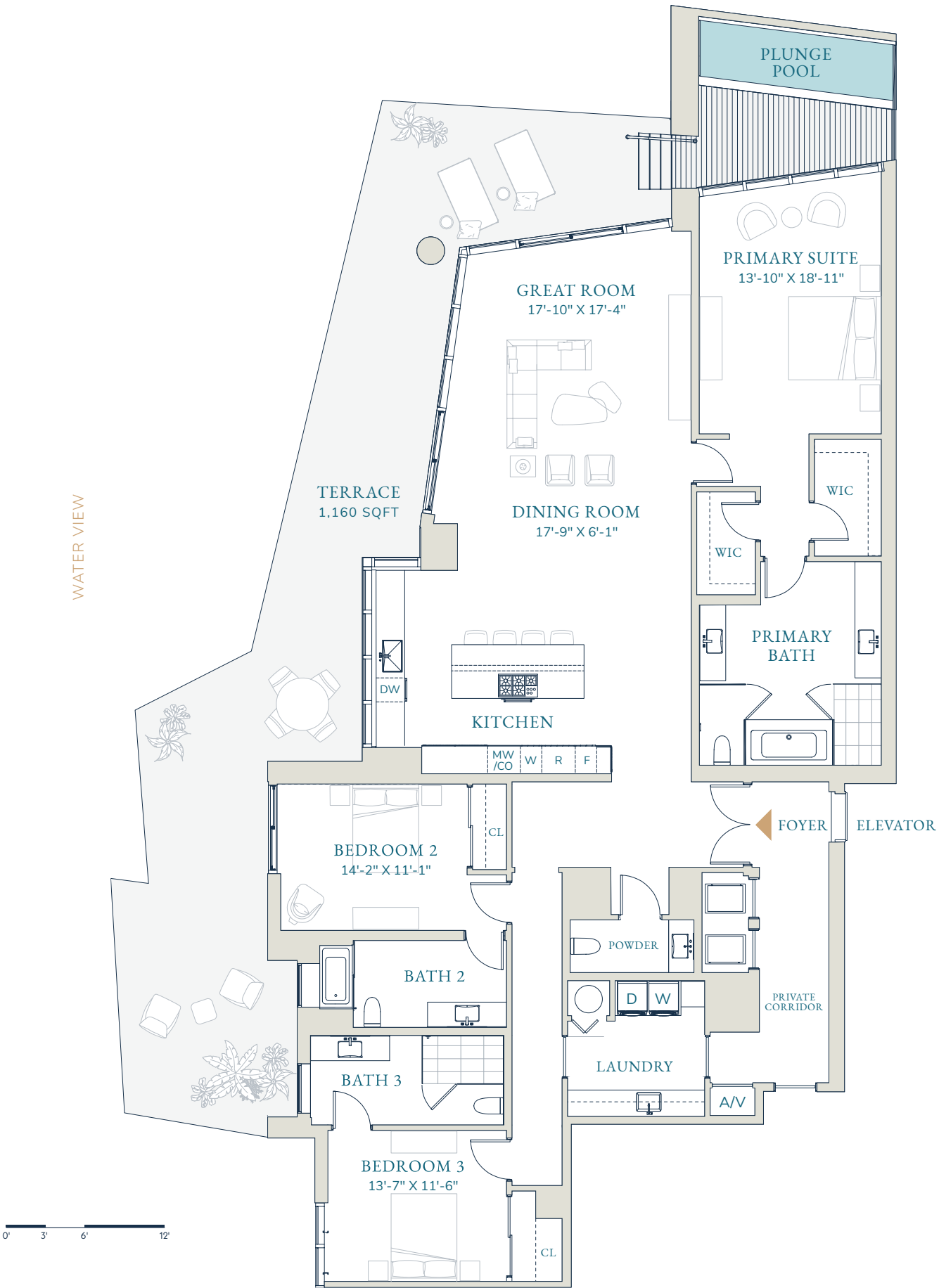
A

- 3 BEDROOMS
- 3 BATHROOMS
- 1 POWDER ROOM

Interior  
 2,896 SQFT  
 269.05 SM

Terrace  
 1,160 SQFT  
 107.77 SM

Total  
 4,056 SQFT  
 376.81 SM



Stated dimensions are measured to the exterior boundaries of the exterior walls and the centerline of interior demising walls (without deductions for interior columns, shear walls or shafts) and in fact vary from the dimensions that would be determined by using the description and definition of the "Unit" set forth in the Declaration (which generally only includes the interior airspace between the perimeter walls and excludes interior structural components, shear walls and shafts). For the calculation of the unit area following the definition of the unit set forth in the Declaration, see Exhibit "3" of the Declaration. Additionally, measurements of rooms set forth on any floor plan are generally taken at the greatest points of each given room (as if the room were a perfect rectangle), without regard for any cutouts. Accordingly, the area of the actual room will typically be smaller than the product obtained by multiplying the stated length times width. All dimensions are approximate, and all floor plans and development plans are subject to change.

pier SIXTY-SIX  
 RESIDENCES

INDIGO CONDOMINIUM  
 RESIDENCES

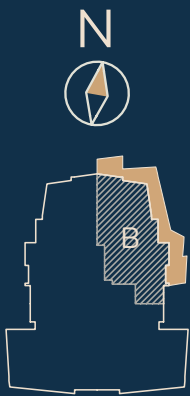
B

- 3 BEDROOMS
- 3 BATHROOMS
- 1 POWDER ROOM

Interior  
 2,896 SQFT  
 269.05 SM

Terrace  
 1,160 SQFT  
 107.77 SM

Total  
 4,056 SQFT  
 376.81 SM



Stated dimensions are measured to the exterior boundaries of the exterior walls and the centerline of interior demising walls (without deductions for interior columns, shear walls or shafts) and in fact vary from the dimensions that would be determined by using the description and definition of the "Unit" set forth in the Declaration (which generally only includes the interior airspace between the perimeter walls and excludes interior structural components, shear walls and shafts). For the calculation of the unit area following the definition of the unit set forth in the Declaration, see Exhibit "3" of the Declaration. Additionally, measurements of rooms set forth on any floor plan are generally taken at the greatest points of each given room (as if the room were a perfect rectangle), without regard for any cutouts. Accordingly, the area of the actual room will typically be smaller than the product obtained by multiplying the stated length times width. All dimensions are approximate, and all floor plans and development plans are subject to change.

pier SIXTY-SIX  
 RESIDENCES

INDIGO CONDOMINIUM  
 RESIDENCES

C

3 BEDROOMS  
 3 BATHROOMS  
 1 POWDER ROOM

Interior  
 2,837 SQFT  
 263.57 SM

Terrace  
 1,045 SQFT  
 97.08 SM

Total  
 3,882 SQFT  
 360.65 SM



Stated dimensions are measured to the exterior boundaries of the exterior walls and the centerline of interior demising walls (without deductions for interior columns, shear walls or shafts) and in fact vary from the dimensions that would be determined by using the description and definition of the "Unit" set forth in the Declaration (which generally only includes the interior airspace between the perimeter walls and excludes interior structural components, shear walls and shafts). For the calculation of the unit area following the definition of the unit set forth in the Declaration, see Exhibit "3" of the Declaration. Additionally, measurements of rooms set forth on any floor plan are generally taken at the greatest points of each given room (as if the room were a perfect rectangle), without regard for any cutouts. Accordingly, the area of the actual room will typically be smaller than the product obtained by multiplying the stated length times width. All dimensions are approximate, and all floor plans and development plans are subject to change.

pier SIXTY-SIX  
 RESIDENCES

INDIGO CONDOMINIUM  
 RESIDENCES

D

3 BEDROOMS  
 3 BATHROOMS  
 1 POWDER ROOM

Interior  
 2,837 SQFT  
 263.57 SM  
 Terrace  
 1,045 SQFT  
 97.08 SM  
 Total  
 3,882 SQFT  
 360.65 SM



WATER VIEW



0' 3' 6' 12'



Stated dimensions are measured to the exterior boundaries of the exterior walls and the centerline of interior demising walls (without deductions for interior columns, shear walls or shafts) and in fact vary from the dimensions that would be determined by using the description and definition of the "Unit" set forth in the Declaration (which generally only includes the interior airspace between the perimeter walls and excludes interior structural components, shear walls and shafts). For the calculation of the unit area following the definition of the unit set forth in the Declaration, see Exhibit "3" of the Declaration. Additionally, measurements of rooms set forth on any floor plan are generally taken at the greatest points of each given room (as if the room were a perfect rectangle), without regard for any cutouts. Accordingly, the area of the actual room will typically be smaller than the product obtained by multiplying the stated length times width. All dimensions are approximate, and all floor plans and development plans are subject to change.

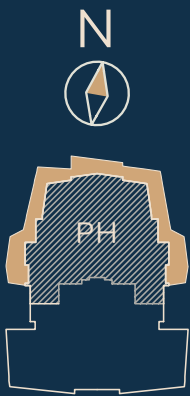


INDIGO CONDOMINIUM  
 RESIDENCES

Penthouse

5 BEDROOMS  
 5 BATHROOMS  
 1 POWDER ROOM

Interior  
 5,824 SQFT  
 541.07 SM  
 Terrace  
 2,375 SQFT  
 220.64 SM  
 Total  
 8,199 SQFT  
 761.71 SM



Stated dimensions are measured to the exterior boundaries of the exterior walls and the centerline of interior demising walls (without deductions for interior columns, shear walls or shafts) and in fact vary from the dimensions that would be determined by using the description and definition of the "Unit" set forth in the Declaration (which generally only includes the interior airspace between the perimeter walls and excludes interior structural components, shear walls and shafts). For the calculation of the unit area following the definition of the unit set forth in the Declaration, see Exhibit "3" of the Declaration. Additionally, measurements of rooms set forth on any floor plan are generally taken at the greatest points of each given room (as if the room were a perfect rectangle), without regard for any cutouts. Accordingly, the area of the actual room will typically be smaller than the product obtained by multiplying the stated length times width. All dimensions are approximate, and all floor plans and development plans are subject to change.