

Selene

OCEANFRONT RESIDENCES
FORT LAUDERDALE

“Our vision for Selene was to create ‘Homes in the Sky.’ Residences offering the space and comforts one associates with a traditional home, along with the luxury and sophistication of high-rise oceanfront living.”

— Bobby Julien
CEO, The Kolter Group



With clear-to-the-horizon panoramic views, lush tropical gardens, and iconic contemporary architecture by Kobi Karp, Selene has redefined oceanfront living in Fort Lauderdale.





Artist's Conceptual Rendering

ELEVATE YOUR EXPECTATIONS



Fort Lauderdale
Florida



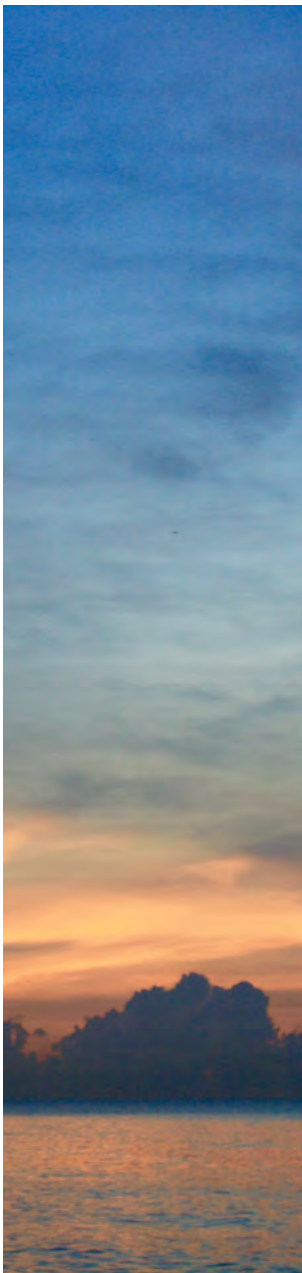
Selene
Oceanfront Residences

Selene's slender 26-story glass towers soar 300 feet into the sky, their graceful lines creating a feeling of complete transparency and light.

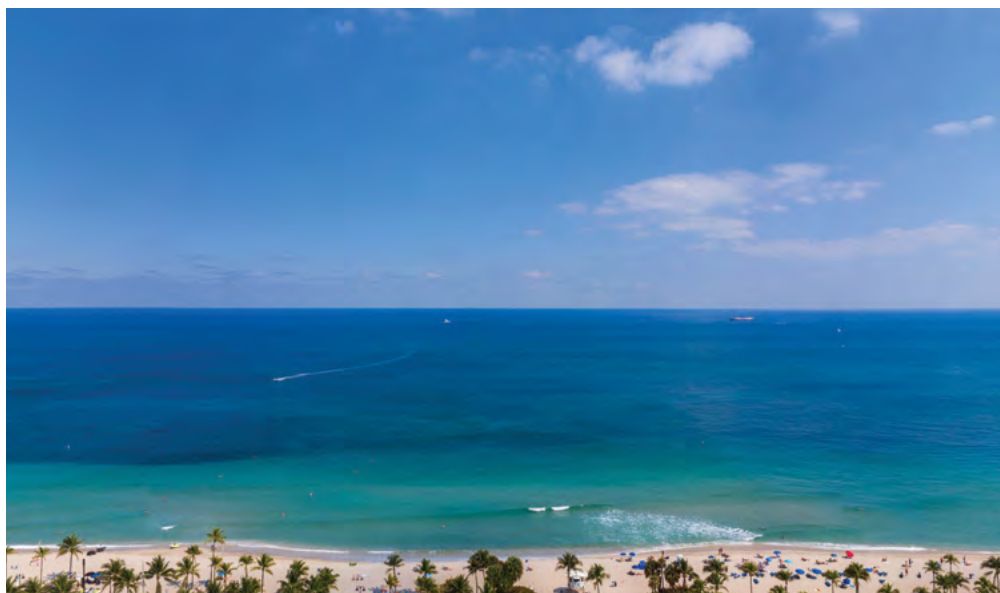
05

Set on one of the last prime oceanfront properties in Fort Lauderdale and boasting a remarkable array of indoor and outdoor resort-style amenities as well as truly spacious residences with private terraces, Selene offers an incomparable South Florida lifestyle. From the dramatic porte cochère to the breathtaking fourth-level Sea View Resort Plaza, hospitality-inspired services elevate everyday living. With assistance from the concierge, residents easily enjoy the very best of the local area's exceptional shopping, dining, cultural, and sporting opportunities.

A LIFESTYLE TO LOVE



Fort Lauderdale
Florida



With the beach just steps away along a garden path, a sunrise swim in turquoise waters can easily become a cherished part of your daily routine.

Selene
Oceanfront Residences

Artfully landscaped grounds bring the tranquil qualities of nature into everyday life — with lively plazas, a dramatic porte cochère, and slender sculptural towers, Selene reflects the relaxed luxury of Fort Lauderdale.



Artist's Conceptual Rendering

WELCOME TO SELENE



Fort Lauderdale
Florida

Selene
Oceanfront Residences

Dramatic covered plazas are staffed 24/7 to ensure gracious arrivals and departures.



The lobby of each tower is elegantly appointed, beautifully illuminated, and furnished with contemporary seating. A unique reveal between the towers provides an open view of the sky, creating an impressive arrival experience for residents and their guests.



Artist's Conceptual Rendering

East Tower Lobby

“Throughout the property, we implemented features that would elegantly complement the building’s location on the waterfront in a modern, coastal way. The limestone appearance of the flooring and the reflective blue ceiling in the lobby are reminiscent of the coloring of the ocean, and the carpeting in the Seasons Gathering Lounge and The Wave Entertainment Lounge is a beautiful interpretation of being under the sea with the coral reefs and ocean light.”

— Sherif Ayad
President and CEO of ID & Design International

South Tower Lobby



Artist's Conceptual Rendering



Artist's Conceptual Rendering

Seasons Gathering Lounge

The Seasons Gathering Lounge offers the ideal setting for impromptu get-togethers as well as carefully planned special events. In addition to spacious comfortable seating areas, a library wall, and a bar with a wine wall, there is a catering kitchen, a large communal dining table, and the event terrace that can be reserved for private gatherings such as parties, chef demonstrations, or holiday celebrations.



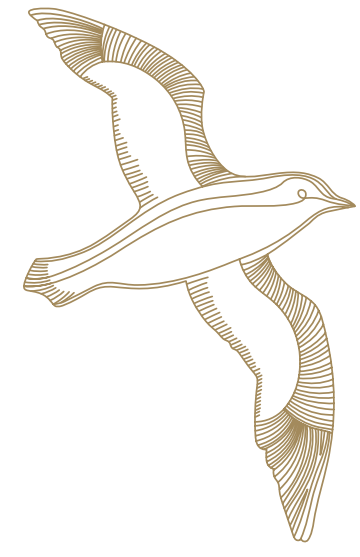
In The Wave, welcoming conversation areas, TVs, a fireplace, a bar, a billiards table, a card table, and a simulated video experience make it the perfect place to enjoy on your own or in the company of friends and family. Movie night is a posh private affair at The Theater, where plush seating adds total comfort to the experience.





Artist's Conceptual Rendering

At Selene's elevated Sea View Resort Plaza, discover two pools and sweeping Atlantic Ocean views — this is Fort Lauderdale's finest oceanfront lifestyle.



Fort Lauderdale
Florida

Selene
Oceanfront Residences



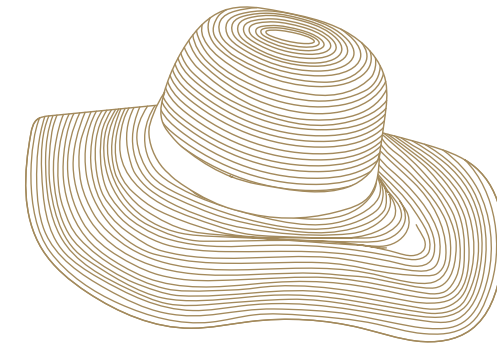
Artist's Conceptual Rendering

Tall, slender, and gracefully arched, Selene's East and South towers celebrate the unique beauty of a tropical lifestyle.

From a spectacular oceanfront dining experience to the elevated Sea View Resort Plaza with two swimming pools and inspiring Atlantic Ocean views, Selene brings five-star, resort-style luxuries into its private community for the exclusive enjoyment of residents. Beyond its rich collection of amenities for relaxation, celebration, entertainment, and working from home, Selene's curated array of services elevates everyday living and enhances special occasions.



Come to expect a host of personalized experiences, from porte cochère and poolside cabanas to beachfront chair service.



Fort Lauderdale
Florida

Selene
Oceanfront Residences



Selene's full complement of 24/7 staff are intent on elevating the everyday to something more delightful. Assistance with packages when you arrive home, fresh towels by the pool, and reservations at Fort Lauderdale's top dining establishments are among the many ways staff bring touches of luxury to every moment.

HIGHLIGHTS

Premier oceanfront location directly across from Fort Lauderdale's award-winning Las Olas Beach

Minutes from the shops, cafés, and restaurants along Las Olas Boulevard

Clear-to-the-horizon Atlantic Ocean, Intracoastal, and panoramic Fort Lauderdale city views

Iconic, contemporary architecture by acclaimed Kobi Karp Architecture

Two 26-story, 300-foot-high towers rise above dramatic, covered arrival plazas

Over 5,300 square feet dedicated to an unrivaled oceanfront dining experience

Thoughtfully composed homes in the sky from 1,400 square feet to over 3,200 square feet, plus penthouses available, most with 10' deep private glass-railed balconies

Expansive interiors with dramatic, voluminous 9'8" ceilings, floor-to-ceiling windows and sliding glass doors, and availability of a luxurious designer finish package

Resort-style collection of indoor and outdoor amenities, including an elevated amenity deck with sweeping Atlantic Ocean views that features a resort-style pool, a 75' fitness lap pool and an intimate spa

Extensive social amenities, including clubrooms, a theater, indoor and outdoor bars, and special events spaces

Double-height state-of-the-art fitness center overlooking Selene's tropical gardens

Shared area for work-from-home activities, private and semi-private glass cubicles, soundproof telephone pods, and a conference room

SERVICES

Dedicated lobby staff to assist all residents

Concierge service available to provide personalized assistance to all residents

24-hour valet service or limited self-parking spaces available

On-site property management

Large mail room with package storage in each lobby

Reserved VIP Beach Chair Service is enjoyed by Selene residents

ADVANCED SYSTEMS & FEATURES

Secured, integrated garage parking

24/7 security and access-controlled entry points to all elevators, both lobbies, the parking garage, and all amenity spaces

Service elevator to all floors accommodates move-ins and provides secondary access in the event of servicing of passenger elevators

Individual lockable, humidity-controlled storage areas and secure bike storage available

Emergency generator to support life-safety systems in the event of a power outage

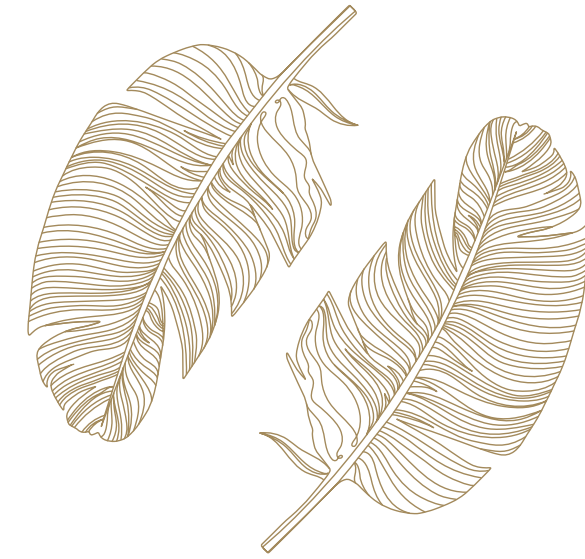
Secured Wi-Fi throughout all common areas and amenity spaces

Fort Lauderdale
Florida

Selene
Oceanfront Residences



A premier Fort Lauderdale location—shopping, dining, sports and culture at your fingertips.



Fort Lauderdale
Florida

Selene
Oceanfront Residences



Selene places residents near the very best of Fort Lauderdale's shopping, dining, entertainment, and water-sporting destinations. From luxury retailers and critically acclaimed restaurants to world-class water sports, full-service marinas, and championship golf courses, there are countless opportunities for leisure and adventure.

A LOCATION BEYOND COMPARE



ARTS AND CULTURE

1. Bonnet House Museum & Gardens
2. Broward Center for the Performing Arts
3. FATVillage Arts District
4. History Fort Lauderdale
5. Riverwalk Arts and Entertainment District

SHOPPING

6. Fresh Market
7. Greenwise
8. Kilwins
9. Las Olas Boulevard
10. The Galleria Mall
11. Trader Joe's
12. Whole Foods

ACCESS

13. Brightline Railway
14. Fort Lauderdale-Hollywood International Airport
15. Water Taxi

YACHTING

16. Bahia Mar Marina, Resort and Yachting Center
17. Coral Ridge Yacht Club
18. Las Olas Marina

RECREATIONAL

19. Chris Evert Tennis Center
20. Coral Ridge Country Club (Golf Course)
21. Hugh Taylor Birch State Park
22. Marriott Harbor Beach Resort & Spa
23. The Wharf Fort Lauderdale

RESTAURANTS

24. Bokampers Sports Bar & Grill
25. Bombay Darbar
26. Caffé Europa
27. Canyon Restaurant
28. Casa D'Angelo
29. Casa Sensei
30. Casablanca
31. Coconuts
32. Del Frisco's Grille
33. Dune by Auberge Resorts Collection
34. Eddie V's
35. Friendship Cafe
36. Funky Buddha Brewery - Oakland Park
37. Gran Forno
38. Greek Isles Taverna
39. Harborwood Urban Kitchen & Bar

40. Java & Jam
41. Kaluz
42. Louie Bossi
43. Myapapaya
44. Rivertail
45. S3
46. Shooters Waterfront
47. SpaJuiceBar
48. Steak 954
49. Takato
50. Yolo

OTHER NEARBY POINTS OF INTEREST

- Everglades
- Seminole Hard Rock Casino
- Miami-Opa-locka Executive Airport
- Fort Lauderdale Executive Airport
- Grande Oaks Golf Country Club
- Port Everglades (Cruise)
- Fort Lauderdale Country Club
- Miami International Airport



From independent boutiques and art galleries along Las Olas Boulevard to luxury retailers at The Galleria at Fort Lauderdale, top shopping is less than 10 minutes away. Private marinas and deep-sea fishing charters are nearby, as are miles of hiking trails and freshwater kayaking at the Hugh Taylor Birch State Park. Culture mavens will enjoy visits to Bonnet House Museum & Garden and Broward Center for the Performing Arts, while gourmands will discover a wide selection of dining destinations, including atmospheric waterfront restaurants serving fresh-caught seafood.



Breathtaking views over Fort Lauderdale's powdery sand beaches stretch to the horizon, the lights of the city sparkle in the night sky.

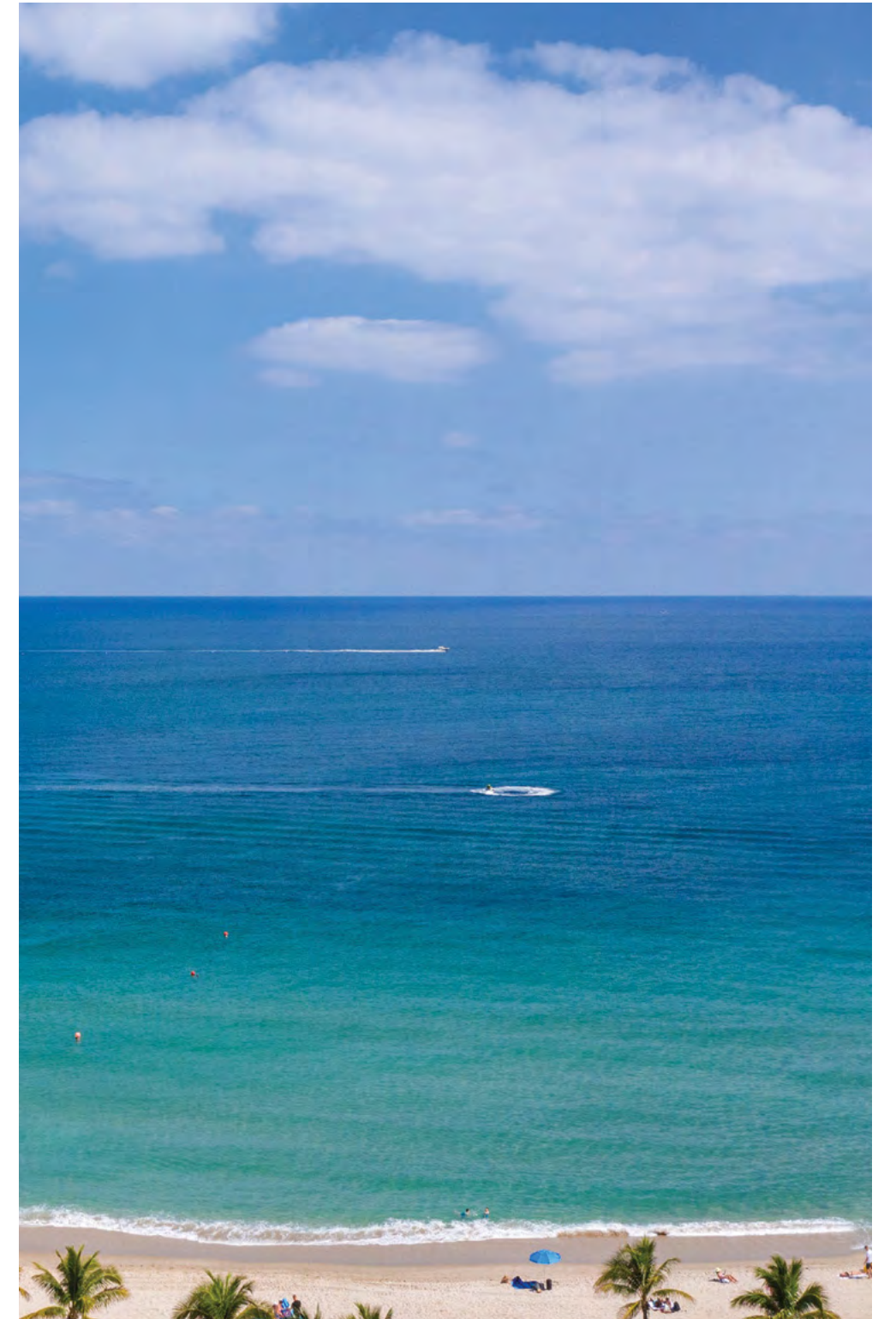
Tiffany Residence — Great Room



Artist's Conceptual Rendering

Fort Lauderdale
Florida

Selene
Oceanfront Residences



YOUR HOME
IN THE SKY



Tall and slender, Selene's
East and South towers both
showcase panoramic ocean,
intracoastal, and city views.



Artist's Conceptual Rendering

Sand Castle Residence — Family Room

Light-filled contemporary interiors feature full-height windows and sliding glass doors.

Selene's thoughtfully composed two- and three-bedroom residences range from 1,400 to over 5,700 square feet and include ten extraordinary penthouses available on the top two floors. Most of these residences feature 10-foot deep, private glass-railed terraces, flowing contemporary floorplans with floor-to-ceiling windows showcasing exceptional direct Atlantic Ocean, Intracoastal, or dynamic city skyline views.

Residences are delivered ready for your own customization upon ownership. Luxurious finish packages created by our design team are also available at an additional cost above the purchase price. These packages include large format porcelain tile throughout the residence, chef-inspired gourmet kitchens with Italian cabinets and quartz countertops, Wolf® electric cooktop with integrated canopy hood, oven and microwave and Sub-Zero® refrigerator/freezer and ASKO® dishwasher with stainless-steel interior.

Cobalt Residence — Great Room



Artist's Conceptual Rendering





Artist's Conceptual Rendering

Beachwalk Residence — Den

With flow-through interiors and expansive private terraces, Selene's architecturally distinctive residences are designed in every detail for the way you live, relax, and entertain today.

Beachwalk Residence — Great Room



Artist's Conceptual Rendering



Artist's Conceptual Rendering

Tiffany Residence — Master Bedroom

Tiffany Residence — Den



Artist's Conceptual Rendering

Fort Lauderdale
Florida

Selene
Oceanfront Residences

Tiffany Residence — Master Bath



Artist's Conceptual Rendering



Ritz-Carlton Residences, Sarasota



Mark, Sarasota



100 Las Olas, Fort Lauderdale



5000 North Ocean, Singer Island



ONE, St. Petersburg



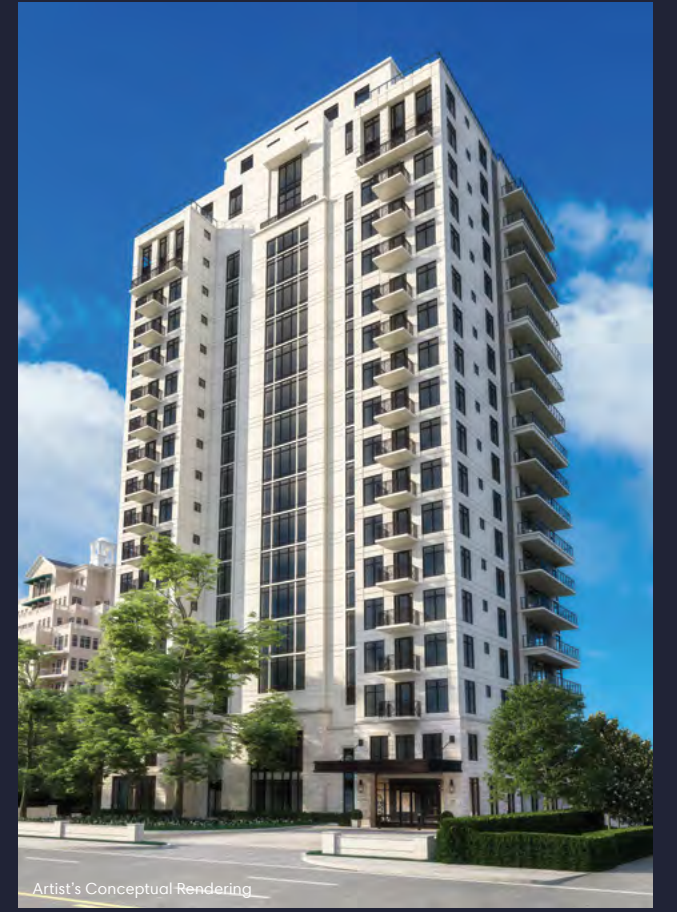
Water Club, North Palm Beach

COMPLETED PROJECTS

PROJECTS IN DEVELOPMENT



Hyde Park House, Tampa Bay



Graydon Buckhead, Atlanta

Fort Lauderdale
Florida



Bayso, Sarasota

Saltaire, St. Petersburg



Selene
Oceanfront Residences

PRESENTED BY
KOLTER

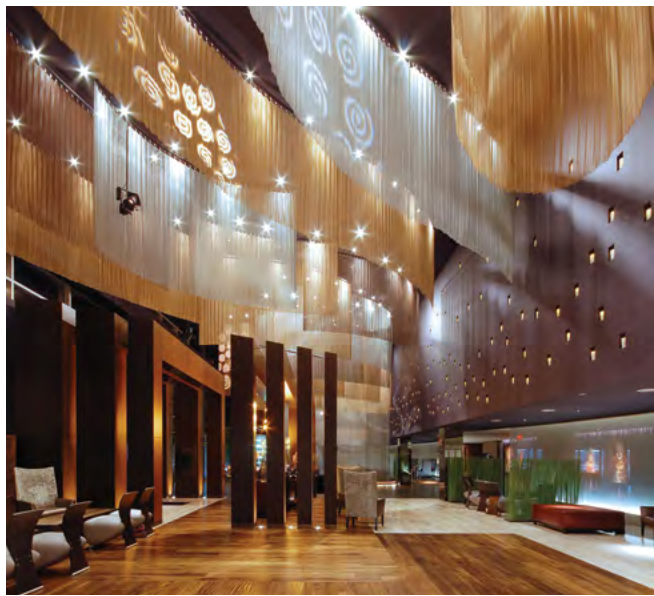
Headquartered in Palm Beach County, Florida, and winner of numerous industry awards, Kolter has introduced a vision for luxury that is continually raising expectations for homebuyers and establishing new standards for the industry. Committed to "Creating Better Communities," the company brings over twenty years of innovative residential development to each new endeavor. Kolter recognizes that with each new home sale, there is an inherent commitment to deliver not just a quality residence, but a unique, amenity-rich lifestyle. With that in mind, the company strives to deliver the most sought-after, energy-efficient designs, complete with the best finishes and amenities. Kolter has completed and is in the process of developing in excess of \$4 billion in residential projects, including 6,900 exceptional condominium and townhome residences in waterfront, water view, and amenity-rich walkable urban locations. Kolter has a strong record developing residences located in some of the most desirable locations in Florida and the Southeast United States, including the Palm Beaches, Fort Lauderdale, Sarasota, St. Petersburg, Tampa, and Atlanta.



Chateau Beach Residences, Sunny Isles, FL



For over two decades, Kobi Karp Architecture and Interior Design has been providing unique, creative, and innovative design solutions to renowned clients internationally and domestically in hospitality, retail, and residential developments. To date, Kobi Karp Architecture and Interior Design has designed over \$36 billion in mixed-use commercial, residential, and multifamily properties worldwide from the Caribbean, to the Far East, to the Black Sea region, throughout the Gulf and the Middle East. Kobi Karp, the firm's founding principal, is an award-winning member of the American Institute of Architects and the American Society of Interior Design. Kobi Karp Architecture and Interior Design is an award-winning company and member of the American Institute of Architects (AIA) and the American Society of Interior Designs (ASID).



IPIC Theater, Scottsdale, AZ



ID & Design International is an award-winning design and branding firm with a diversified team of designers and branding experts specializing in multifamily, commercial mixed-use, retail, hospitality, entertainment, and cruise ship projects. With vast international experience and exposure to some of the world's leading businesses, retailers, real estate developers, and investors, the firm has built a team of innovative designers that are strategists, problem solvers, and out-of-the-box thinkers. IDDI designs experiences, not just spaces. It combines passion for iconic design with a unique business approach to deliver multi-sensorial design solutions. The IDDI team collaboratively leads the design process by actively engaging with clients, sincerely listening to their needs, and facilitating the vision from conception to completion.



Selene Oceanfront Residences, Fort Lauderdale Beach, FL



Established in 1911, Douglas Elliman Real Estate is the largest brokerage in the New York Metropolitan area and one of the largest independent residential real estate brokerages in the United States. With more than 7,000 agents, the company operates approximately 105 offices in New York City, Long Island, the Hamptons, Westchester, Connecticut, New Jersey, Florida, California, Colorado, Massachusetts, and Texas. Moreover, Douglas Elliman has a strategic global alliance with London-based Knight Frank Residential for business in the worldwide luxury markets spanning 61 countries and six continents. The company also controls a portfolio of real estate services including Douglas Elliman Development Marketing, Douglas Elliman Property Management, and Douglas Elliman Commercial.

Your Oceanfront Home in the Fort Lauderdale Skyline Awaits.

SeleneFTL.com



PRESENTED BY
KOLTER



ORAL REPRESENTATIONS CANNOT BE RELIED UPON AS CORRECTLY STATING REPRESENTATIONS OF THE SELLER. FOR CORRECT REPRESENTATIONS, MAKE REFERENCE TO THE DOCUMENTS REQUIRED BY SECTION 718.503, FLORIDA STATUTES TO BE FURNISHED BY SELLER TO A BUYER OR LESSEE. Prices, terms and availability are subject to change at any time without notice. All photographs and renderings of improvements are conceptual only and do not presently exist. Actual improvements, including furnishings, fixtures, recreational facilities and amenities, may vary from those shown and views may not be available from all units. This is not an offer to sell or solicitation of offers to buy the condominium units in states where such offer or solicitation requires prior qualification if such prior qualification has not been obtained. For New York Residents: THE COMPLETE OFFERING TERMS ARE IN A CPS-12 APPLICATION AVAILABLE FROM THE OFFEROR, KT SEABREEZE ATLANTIC LLC, a Florida Limited Liability Company, 105 NE 1st street, Delray Beach, FL 33444. FILE NO. CP21-0086. For New Jersey Residents: THIS ADVERTISEMENT IS A SOLICITATION FOR THE SALE OF UNITS IN SELENE CONDOMINIUM: N.J. REG. NO. 21-04-0005.

