

BAY HARBOR
TOWERS

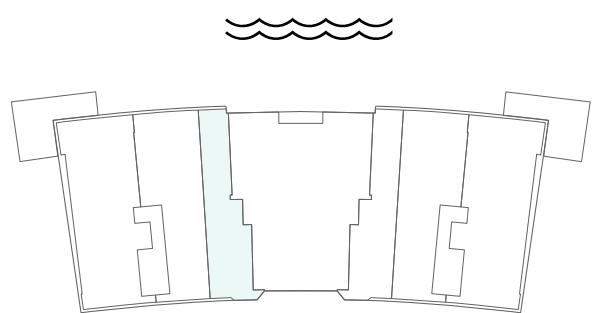
Residence
204

2 BEDROOM + DEN
3 BATHROOM

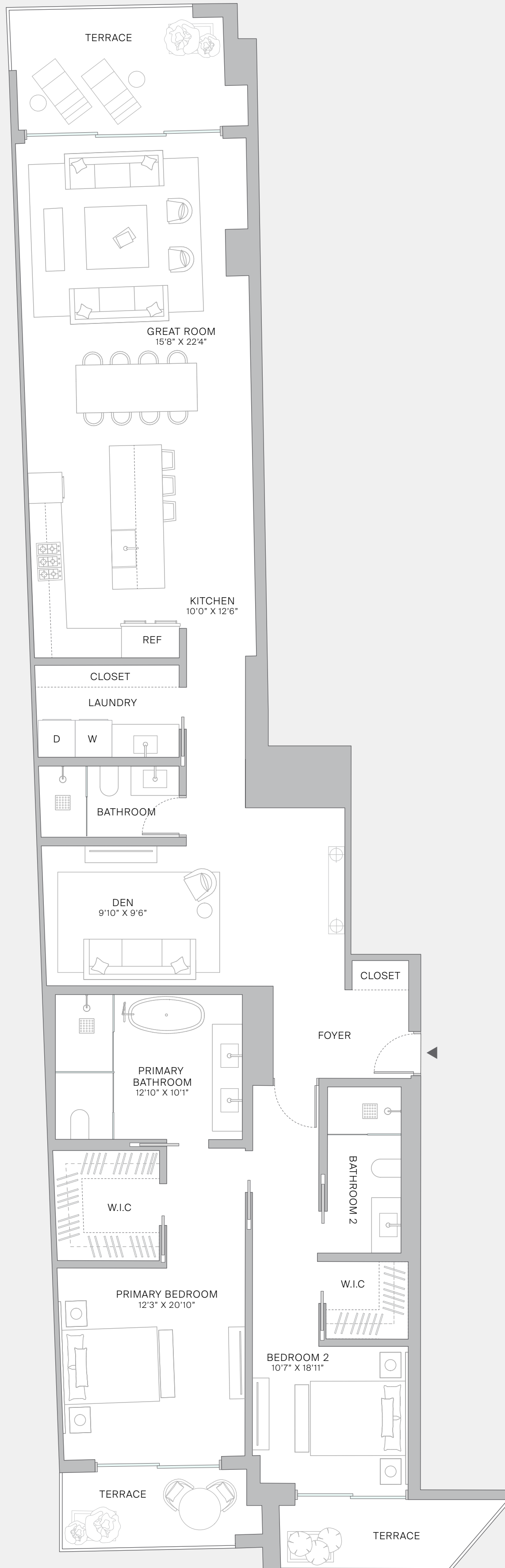
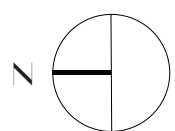
INTERIOR
1,857 SF / 174 SM

EXTERIOR
214 SF / 20 SM

TOTAL
2,071 SF / 192 SM



EAST BAY HARBOR DRIVE

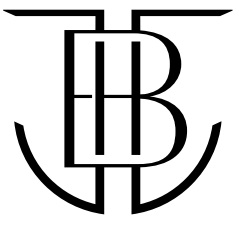


ORAL REPRESENTATIONS CANNOT BE RELIED UPON AS CORRECTLY STATING REPRESENTATIONS OF THE DEVELOPER. FOR CORRECT REPRESENTATIONS, MAKE REFERENCE TO THIS BROCHURE AND TO THE DOCUMENTS REQUIRED BY SECTION 718.503, FLORIDA STATUTES, TO BE FURNISHED BY A DEVELOPER TO A BUYER OR LESSEE.

This is not intended to be an offer to sell, or solicitation to buy, condominium units to residents of any jurisdiction where prohibited by law, and your eligibility for purchase will depend upon your state of residency. This offering is made only by the prospectus for the condominium and no statement should be relied upon if not made in the prospectus. The features, plans and specifications described or depicted herein are proposed only, and the Developer reserves the right to modify, revise or withdraw any or all of same in its sole discretion and without prior notice. Stated dimensions are measured to the exterior boundaries of the exterior walls and the centerline of interior demising walls and in fact vary from the dimensions that would be determined by using the description and definition of the "Unit" set forth in the Declaration (which generally only includes the interior airspace between the perimeter walls and excludes interior structural components). For your reference, the area of the Unit, determined in accordance with those defined unit boundaries, is the surveyor square footage of the unit. Note that measurements of rooms set forth on this floor plan are generally taken at the greatest points of each given room (as if the room were a perfect rectangle), without regard for any cutouts. Accordingly, the area of the actual room will typically be smaller than the product obtained by multiplying the stated length times width. All dimensions are approximate and may vary with actual construction, and all floor plans and development plans are subject to change. PPG DEVELOPMENT ("Named Party") is not the project Developer. This Condominium is being developed by PPG BHT Owner LLC ("Developer"). Any and all statements, disclosures and/or representations shall be deemed made by Developer and not by Named Party and any purchaser agrees to look solely to Developer (and not to Named Party and/or any of its affiliates or principals) with respect to any and all matters relating to the marketing and/or development of the Condominium and with respect to the sales of units in the Condominium.



FORTUNE
DEVELOPMENT
SALES



BAY HARBOR
TOWERS

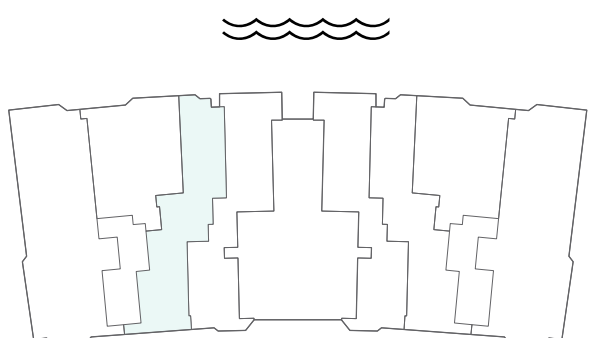
Residence
306

2 BEDROOM + DEN
3 BATHROOM

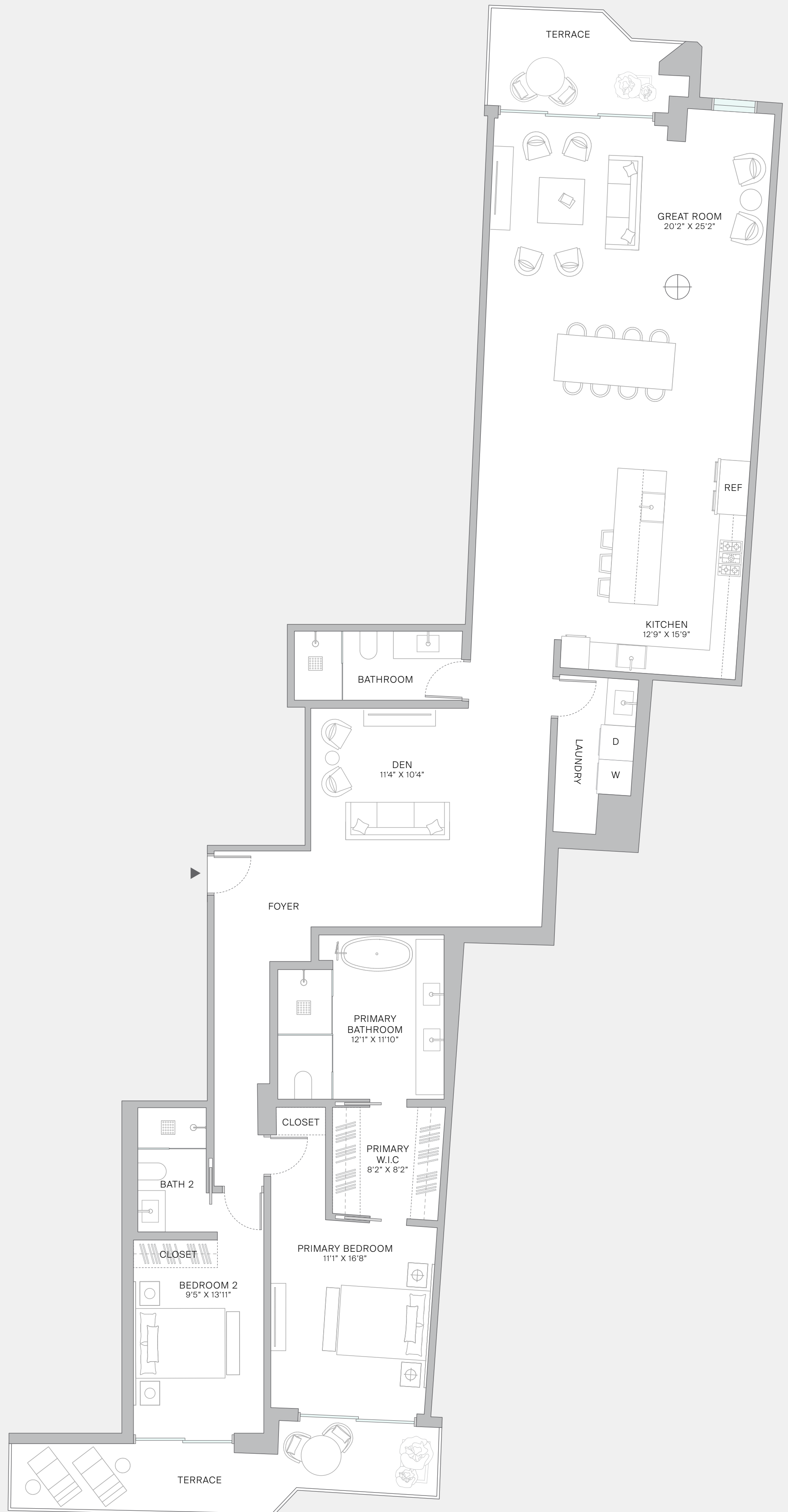
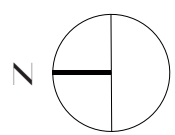
INTERIOR
2,137 SF / 198 SM

EXTERIOR
223 SF / 21 SM

TOTAL
2,360 SF / 219 SM



EAST BAY HARBOR DRIVE

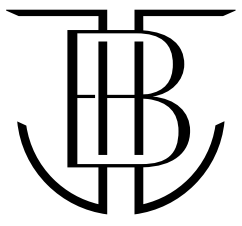


ORAL REPRESENTATIONS CANNOT BE RELIED UPON AS CORRECTLY STATING REPRESENTATIONS OF THE DEVELOPER. FOR CORRECT REPRESENTATIONS, MAKE REFERENCE TO THIS BROCHURE AND TO THE DOCUMENTS REQUIRED BY SECTION 718.503, FLORIDA STATUTES, TO BE FURNISHED BY A DEVELOPER TO A BUYER OR LESSEE.

This is not intended to be an offer to sell, or solicitation to buy, condominium units to residents of any jurisdiction where prohibited by law, and your eligibility for purchase will depend upon your state of residency. This offering is made only by the prospectus for the condominium and no statement should be relied upon if not made in the prospectus. The features, plans and specifications described or depicted herein are proposed only, and the Developer reserves the right to modify, revise or withdraw any or all of same in its sole discretion and without prior notice. Stated dimensions are measured to the exterior boundaries of the exterior walls and the centerline of interior demising walls and in fact vary from the dimensions that would be determined by using the description and definition of the "Unit" set forth in the Declaration (which generally only includes the interior airspace between the perimeter walls and excludes interior structural components). For your reference, the area of the Unit, determined in accordance with those defined unit boundaries, is the surveyor square footage of the unit. Note that measurements of rooms set forth on this floor plan are generally taken at the greatest points of each given room (as if the room were a perfect rectangle), without regard for any cutouts. Accordingly, the area of the actual room will typically be smaller than the product obtained by multiplying the stated length times width. All dimensions are approximate and may vary with actual construction, and all floor plans and development plans are subject to change. PPG DEVELOPMENT ("Named Party") is not the project Developer. This Condominium is being developed by PPG BHT Owner, LLC ("Developer"). Any and all statements, disclosures and/or representations shall be deemed made by Developer and not by Named Party and any purchaser agrees to look solely to Developer (and not to Named Party and/or any of its affiliates or principals) with respect to any and all matters relating to the marketing and/or development of the Condominium and with respect to the sales of units in the Condominium.



FORTUNE
DEVELOPMENT
SALES



BAY HARBOR
TOWERS

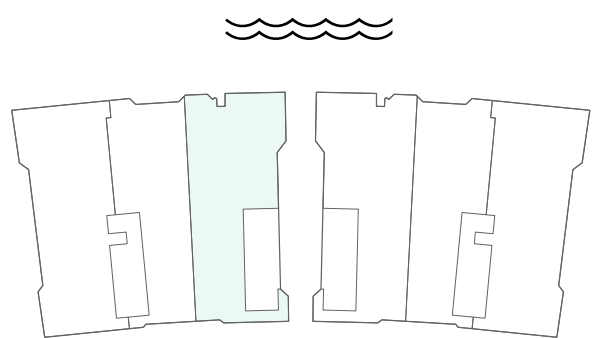
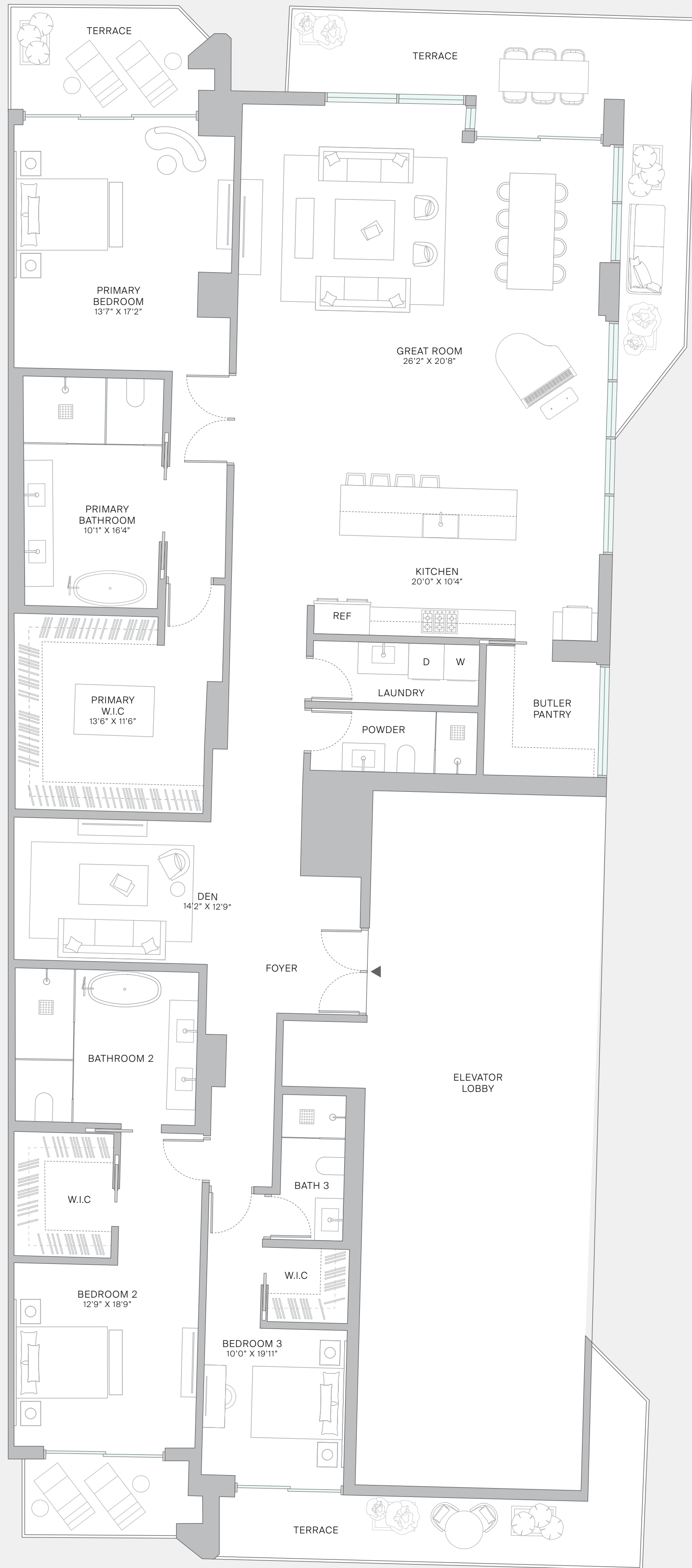
Residence
704

3 BEDROOM + DEN
4 BATHROOM

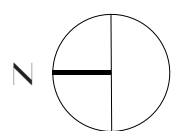
INTERIOR
3,224 SF / 299 SM

EXTERIOR
525 SF / 49 SM

TOTAL
3,749 SF / 348 SM



EAST BAY HARBOR DRIVE

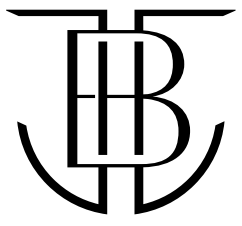


FORTUNE
DEVELOPMENT
SALES

PPG DEVELOPMENT

ORAL REPRESENTATIONS CANNOT BE RELIED UPON AS CORRECTLY STATING REPRESENTATIONS OF THE DEVELOPER. FOR CORRECT REPRESENTATIONS, MAKE REFERENCE TO THIS BROCHURE AND TO THE DOCUMENTS REQUIRED BY SECTION 718.503, FLORIDA STATUTES, TO BE FURNISHED BY A DEVELOPER TO A BUYER OR LESSEE.

This is not intended to be an offer to sell, or solicitation to buy, condominium units to residents of any jurisdiction where prohibited by law, and your eligibility for purchase will depend upon your state of residency. This offering is made only by the prospectus for the condominium and no statement should be relied upon if not made in the prospectus. The features, plans and specifications described or depicted herein are proposed only, and the Developer reserves the right to modify, revise or withdraw any or all of same in its sole discretion and without prior notice. Stated dimensions are measured to the exterior boundaries of the exterior walls and the centerline of interior demising walls and in fact vary from the dimensions that would be determined by using the description and definition of the "Unit" set forth in the Declaration (which generally only includes the interior airspace between the perimeter walls and excludes interior structural components). For your reference, the area of the Unit, determined in accordance with those defined unit boundaries, is the surveyor square footage of the unit. Note that measurements of rooms set forth on this floor plan are generally taken at the greatest points of each given room (as if the room were a perfect rectangle), without regard for any cutouts. Accordingly, the area of the actual room will typically be smaller than the product obtained by multiplying the stated length times width. All dimensions are approximate and may vary with actual construction, and all floor plans and development plans are subject to change. PPG DEVELOPMENT ("Named Party") is not the project Developer. This Condominium is being developed by PPG BHT Owner, LLC ("Developer"). Any and all statements, disclosures and/or representations shall be deemed made by Developer and not by Named Party and any purchaser agrees to look solely to Developer (and not to Named Party and/or any of its affiliates or principals) with respect to any and all matters relating to the marketing and/or development of the Condominium and with respect to the sales of units in the Condominium.



BAY HARBOR
TOWERS

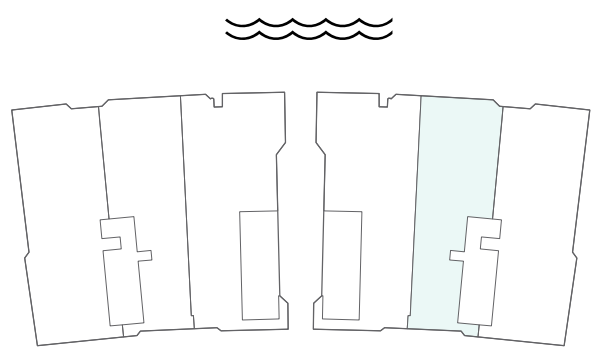
Residence
502

3 BEDROOM + DEN
4 BATHROOM

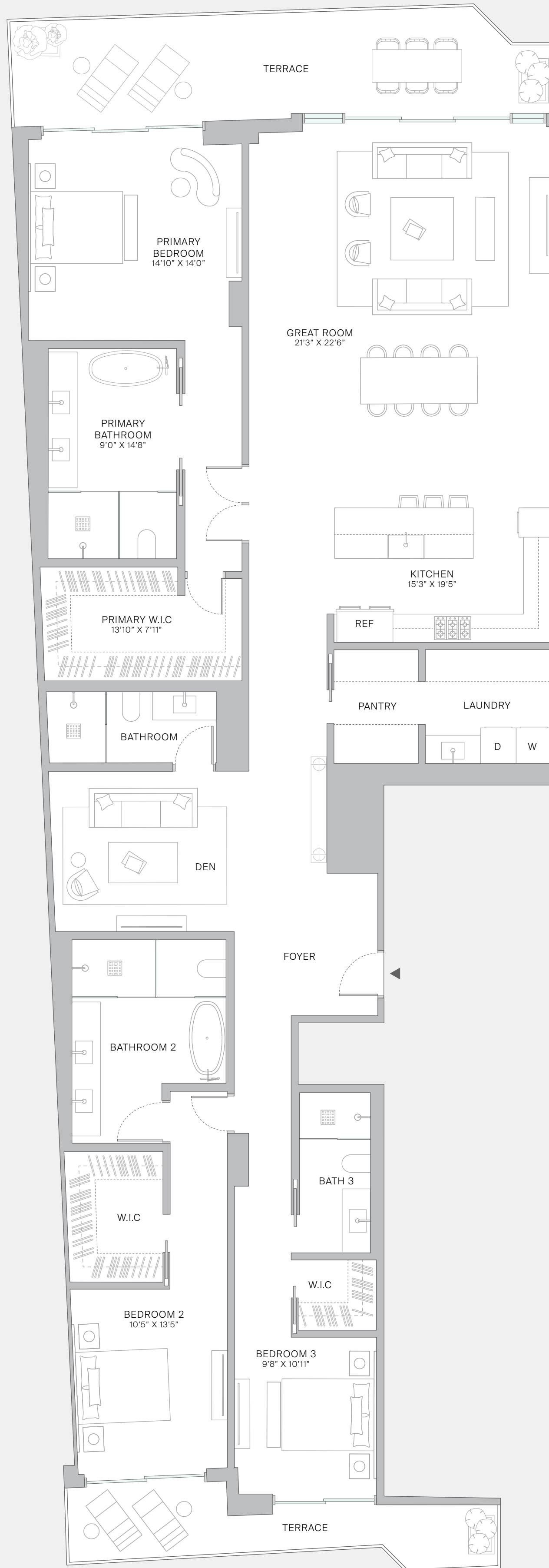
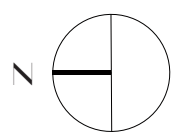
INTERIOR
2,815 SF / 261 SM

EXTERIOR
269 SF / 24 SM

TOTAL
3,084 SF / 285 SM



EAST BAY HARBOR DRIVE

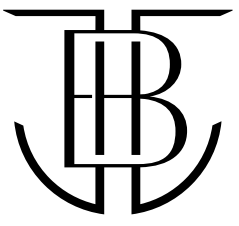


ORAL REPRESENTATIONS CANNOT BE RELIED UPON AS CORRECTLY STATING REPRESENTATIONS OF THE DEVELOPER. FOR CORRECT REPRESENTATIONS, MAKE REFERENCE TO THIS BROCHURE AND TO THE DOCUMENTS REQUIRED BY SECTION 718.503, FLORIDA STATUTES, TO BE FURNISHED BY A DEVELOPER TO A BUYER OR LESSEE.

This is not intended to be an offer to sell, or solicitation to buy, condominium units to residents of any jurisdiction where prohibited by law, and your eligibility for purchase will depend upon your state of residency. This offering is made only by the prospectus for the condominium and no statement should be relied upon if not made in the prospectus. The features, plans and specifications described or depicted herein are proposed only, and the Developer reserves the right to modify, revise or withdraw any or all of same in its sole discretion and without prior notice. Stated dimensions are measured to the exterior boundaries of the exterior walls and the centerline of interior demising walls and in fact vary from the dimensions that would be determined by using the description and definition of the "Unit" set forth in the Declaration (which generally only includes the interior airspace between the perimeter walls and excludes interior structural components). For your reference, the area of the Unit, determined in accordance with those defined unit boundaries, is the surveyor square footage of the unit. Note that measurements of rooms set forth on this floor plan are generally taken at the greatest points of each given room (as if the room were a perfect rectangle), without regard for any cutouts. Accordingly, the area of the actual room will typically be smaller than the product obtained by multiplying the stated length times width. All dimensions are approximate and may vary with actual construction, and all floor plans and development plans are subject to change. PPG DEVELOPMENT ("Named Party") is not the project Developer. This Condominium is being developed by PPG BHT Owner, LLC ("Developer"). Any and all statements, disclosures and/or representations shall be deemed made by Developer and not by Named Party and any purchaser agrees to look solely to Developer (and not to Named Party and/or any of its affiliates or principals) with respect to any and all matters relating to the marketing and/or development of the Condominium and with respect to the sales of units in the Condominium.



FORTUNE
DEVELOPMENT
SALES



BAY HARBOR
TOWERS

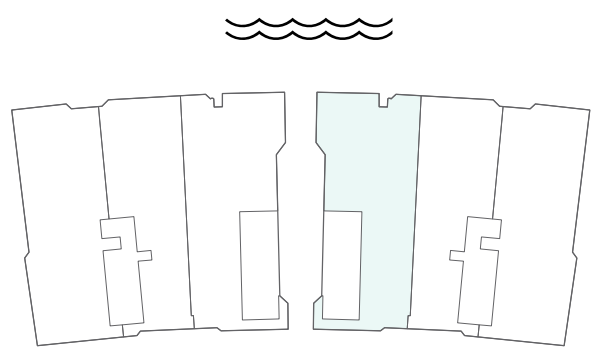
Residence 503

3 BEDROOM + DEN
4 BATHROOM

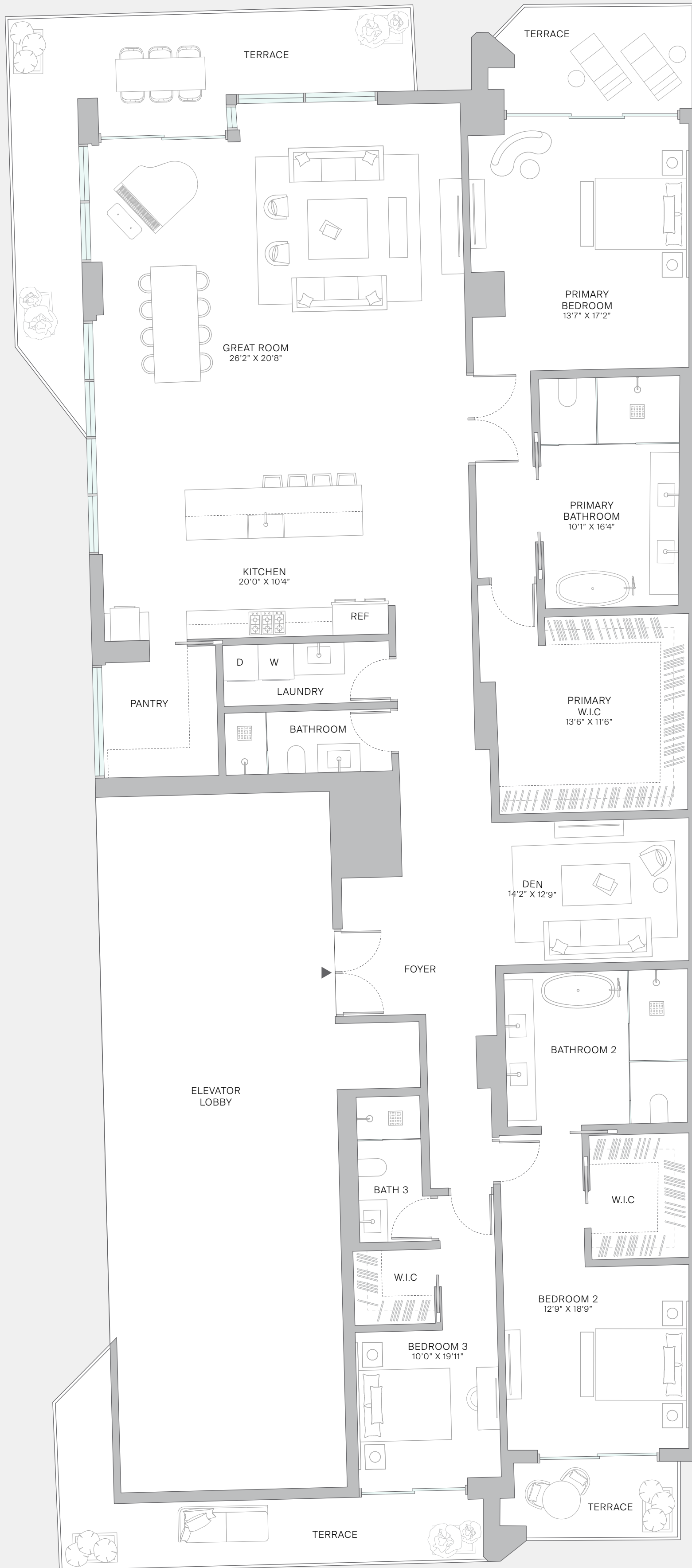
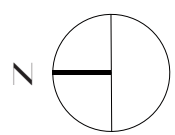
INTERIOR
3,224 SF / 299 SM

EXTERIOR
579 SF / 54 SM

TOTAL
3,803 SF / 353 SM



EAST BAY HARBOR DRIVE

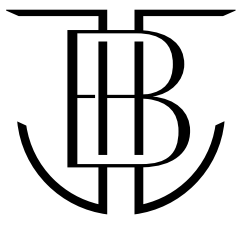


ORAL REPRESENTATIONS CANNOT BE RELIED UPON AS CORRECTLY STATING REPRESENTATIONS OF THE DEVELOPER. FOR CORRECT REPRESENTATIONS, MAKE REFERENCE TO THIS BROCHURE AND TO THE DOCUMENTS REQUIRED BY SECTION 718.503, FLORIDA STATUTES, TO BE FURNISHED BY A DEVELOPER TO A BUYER OR LESSEE.

This is not intended to be an offer to sell, or solicitation to buy, condominium units to residents of any jurisdiction where prohibited by law, and your eligibility for purchase will depend upon your state of residency. This offering is made only by the prospectus for the condominium and no statement should be relied upon if not made in the prospectus. The features, plans and specifications described or depicted herein are proposed only, and the Developer reserves the right to modify, revise or withdraw any or all of same in its sole discretion and without prior notice. Stated dimensions are measured to the exterior boundaries of the exterior walls and the centerline of interior demising walls and in fact vary from the dimensions that would be determined by using the description and definition of the "Unit" set forth in the Declaration (which generally only includes the interior airspace between the perimeter walls and excludes interior structural components). For your reference, the area of the Unit, determined in accordance with those defined unit boundaries, is the surveyor square footage of the unit. Note that measurements of rooms set forth on this floor plan are generally taken at the greatest points of each given room (as if the room were a perfect rectangle), without regard for any cutouts. Accordingly, the area of the actual room will typically be smaller than the product obtained by multiplying the stated length times width. All dimensions are approximate and may vary with actual construction, and all floor plans and development plans are subject to change. PPG DEVELOPMENT ("Named Party") is not the project Developer. This Condominium is being developed by PPG BHT Owner, LLC ("Developer"). Any and all statements, disclosures and/or representations shall be deemed made by Developer and not by Named Party and any purchaser agrees to look solely to Developer (and not to Named Party and/or any of its affiliates or principals) with respect to any and all matters relating to the marketing and/or development of the Condominium and with respect to the sales of units in the Condominium.



FORTUNE
DEVELOPMENT
SALES



BAY HARBOR
TOWERS

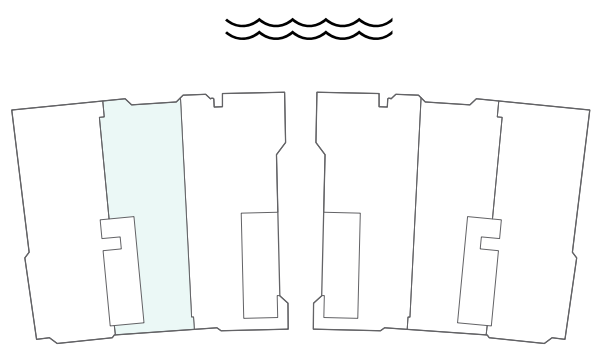
Residence
605

3 BEDROOM + DEN
4 BATHROOM

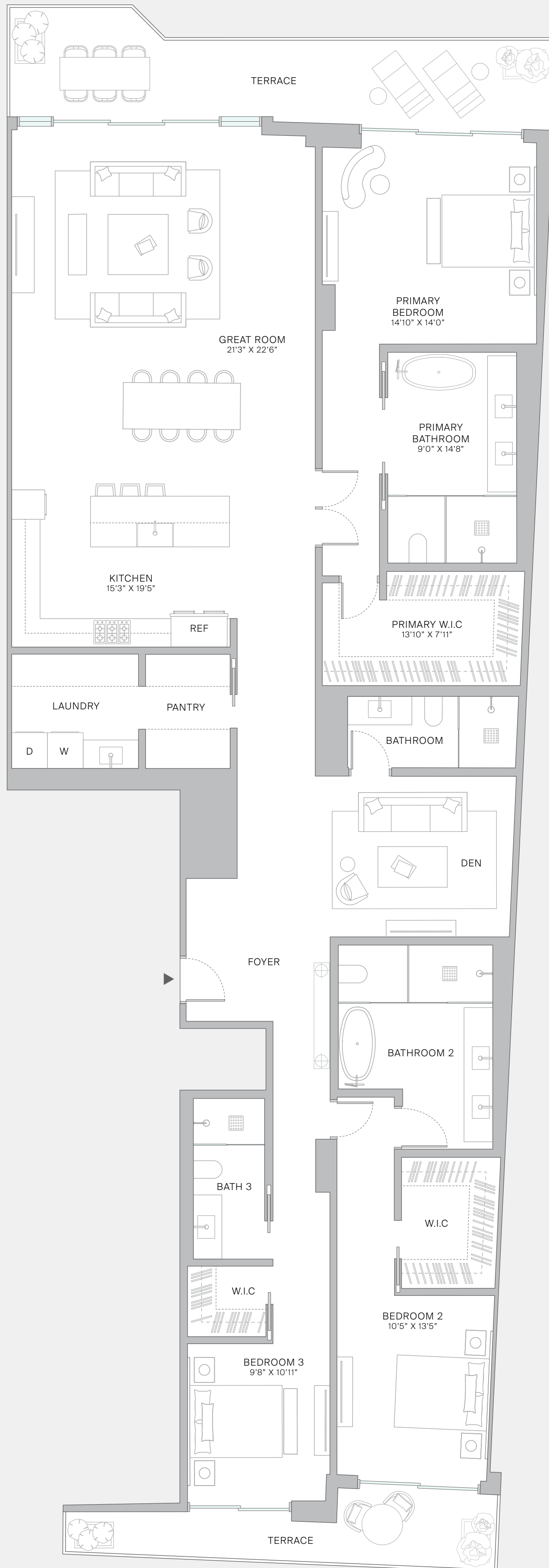
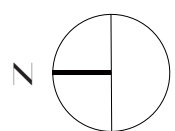
INTERIOR
2,815 SF / 261 SM

EXTERIOR
269 SF / 24 SM

TOTAL
3,084 SF / 285 SM



EAST BAY HARBOR DRIVE

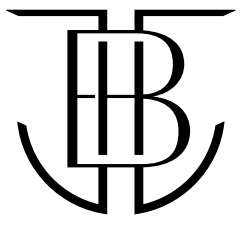


ORAL REPRESENTATIONS CANNOT BE RELIED UPON AS CORRECTLY STATING REPRESENTATIONS OF THE DEVELOPER. FOR CORRECT REPRESENTATIONS, MAKE REFERENCE TO THIS BROCHURE AND TO THE DOCUMENTS REQUIRED BY SECTION 718.503, FLORIDA STATUTES, TO BE FURNISHED BY A DEVELOPER TO A BUYER OR LESSEE.

This is not intended to be an offer to sell, or solicitation to buy, condominium units to residents of any jurisdiction where prohibited by law, and your eligibility for purchase will depend upon your state of residency. This offering is made only by the prospectus for the condominium and no statement should be relied upon if not made in the prospectus. The features, plans and specifications described or depicted herein are proposed only, and the Developer reserves the right to modify, revise or withdraw any or all of same in its sole discretion and without prior notice. Stated dimensions are measured to the exterior boundaries of the exterior walls and the centerline of interior demising walls and in fact vary from the dimensions that would be determined by using the description and definition of the "Unit" set forth in the Declaration (which generally only includes the interior airspace between the perimeter walls and excludes interior structural components). For your reference, the area of the Unit, determined in accordance with those defined unit boundaries, is the surveyor square footage of the unit. Note that measurements of rooms set forth on this floor plan are generally taken at the greatest points of each given room (as if the room were a perfect rectangle), without regard for any closets. Accordingly, the area of the actual room will typically be smaller than the product obtained by multiplying the stated length times width. All dimensions are approximate and may vary with actual construction, and all floor plans and development plans are subject to change. PPG DEVELOPMENT ("Named Party") is not the project Developer. This Condominium is being developed by PPG BHT Owner, LLC ("Developer"). Any and all statements, disclosures and/or representations shall be deemed made by Developer and not by Named Party and any purchaser agrees to look solely to Developer (and not to Named Party and/or any of its affiliates or principals) with respect to any and all matters relating to the marketing and/or development of the Condominium and with respect to the sales of units in the Condominium.



FORTUNE
DEVELOPMENT
SALES



BAY HARBOR
TOWERS

THE
PENTHOUSE
RESIDENCES

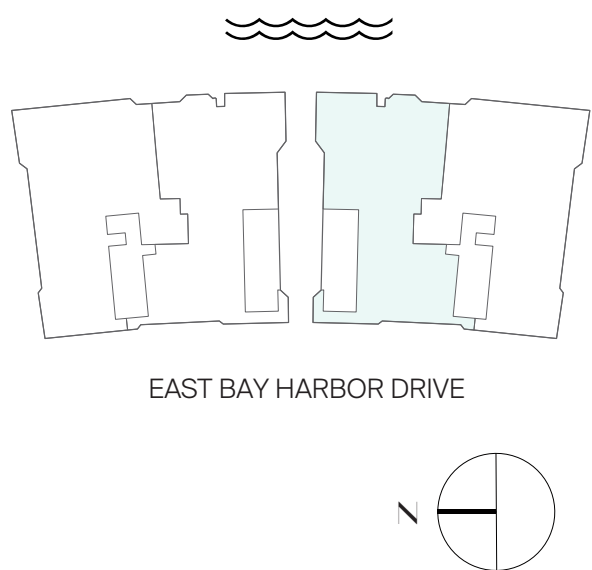
Penthouse 802

4 BEDROOM + DEN
7 BATHROOM

INTERIOR
4,587 SF / 426 SM

PRIVATE TERRACES
2,545 SF / 236 SM

TOTAL
7,132 SF / 662 SM

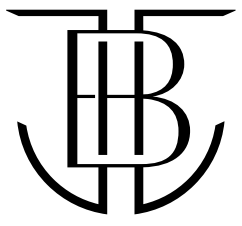


ORAL REPRESENTATIONS CANNOT BE RELIED UPON AS CORRECTLY STATING REPRESENTATIONS OF THE DEVELOPER. FOR CORRECT REPRESENTATIONS, MAKE REFERENCE TO THIS BROCHURE AND TO THE DOCUMENTS REQUIRED BY SECTION 718.503, FLORIDA STATUTES, TO BE FURNISHED BY A DEVELOPER TO A BUYER OR LESSEE.

This is not intended to be an offer to sell, or solicitation to buy, condominium units to residents of any jurisdiction where prohibited by law, and your eligibility for purchase will depend upon your state of residency. This offering is made only by the prospectus for the condominium and no statement should be relied upon if not made in the prospectus. The features, plans and specifications described or depicted herein are proposed only, and the Developer reserves the right to modify, revise or withdraw any or all of same in its sole discretion and without prior notice. Stated dimensions are measured to the exterior boundaries of the exterior walls and the centerline of interior demising walls and in fact vary from the dimensions that would be determined by using the description and definition of the "Unit" set forth in the Declaration (which generally only includes the interior airspace between the perimeter walls and excludes interior structural components). For your reference, the area of the Unit, determined in accordance with those defined unit boundaries, is the surveyor square footage of the unit. Note that measurements of rooms set forth on this floor plan are generally taken at the greatest points of each given room (as if the room were a perfect rectangle), without regard for any cutouts. Accordingly, the area of the actual room will typically be smaller than the product obtained by multiplying the stated length times width. All dimensions are approximate and may vary with actual construction, and all floor plans and development plans are subject to change. PPG DEVELOPMENT ("Named Party") is not the project Developer. This Condominium is being developed by PPG BHT Owner, LLC ("Developer"). Any and all statements, disclosures and/or representations shall be deemed made by Developer and not by Named Party and any purchaser agrees to look solely to Developer (and not to Named Party and/or any of its affiliates or principals) with respect to any and all matters relating to the marketing and/or development of the Condominium and with respect to the sales of units in the Condominium.



FORTUNE
DEVELOPMENT
SALES

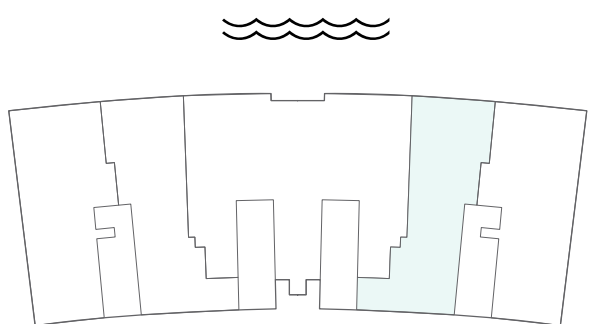


BAY HARBOR
TOWERS

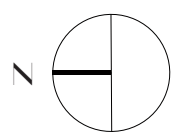
THE
PENTHOUSE
RESIDENCES

Penthouse
Rooftop
802

PRIVATE ROOFTOP
1,805 SF / 167 SM



EAST BAY HARBOR DRIVE



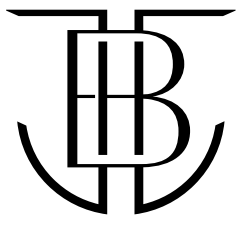
ORAL REPRESENTATIONS CANNOT BE RELIED UPON AS CORRECTLY STATING REPRESENTATIONS OF THE DEVELOPER. FOR CORRECT REPRESENTATIONS, MAKE REFERENCE TO THIS BROCHURE AND TO THE DOCUMENTS REQUIRED BY SECTION 718.503, FLORIDA STATUTES, TO BE FURNISHED BY A DEVELOPER TO A BUYER OR LESSEE.

This is not intended to be an offer to sell, or solicitation to buy, condominium units to residents of any jurisdiction where prohibited by law, and your eligibility for purchase will depend upon your state of residency. This offering is made only by the prospectus for the condominium and no statement should be relied upon if not made in the prospectus. The features, plans and specifications described or depicted herein are proposed only, and the Developer reserves the right to modify, revise or withdraw any or all of same in its sole discretion and without prior notice. Stated dimensions are measured to the exterior boundaries of the exterior walls and the centerline of interior demising walls and in fact vary from the dimensions that would be determined by using the description and definition of the "Unit" set forth in the Declaration (which generally only includes the interior airspace between the perimeter walls and excludes interior structural components). For your reference, the area of the Unit, determined in accordance with those defined unit boundaries, is the surveyor square footage of the unit. Note that measurements of rooms set forth on this floor plan are generally taken at the greatest points of each given room (as if the room were a perfect rectangle), without regard for any cutouts. Accordingly, the area of the actual room will typically be smaller than the product obtained by multiplying the stated length times width. All dimensions are approximate and may vary with actual construction, and all floor plans and development plans are subject to change. PPG DEVELOPMENT ("Named Party") is not the project Developer. This Condominium is being developed by PPG BHT Owner LLC ("Developer"). Any and all statements, disclosures and/or representations shall be deemed made by Developer and not by Named Party and any purchaser agrees to look solely to Developer (and not to Named Party and/or any of its affiliates or principals) with respect to any and all matters relating to the marketing and/or development of the Condominium and with respect to the sales of units in the Condominium.



FORTUNE
DEVELOPMENT
SALES

PPG DEVELOPMENT



BAY HARBOR
TOWERS

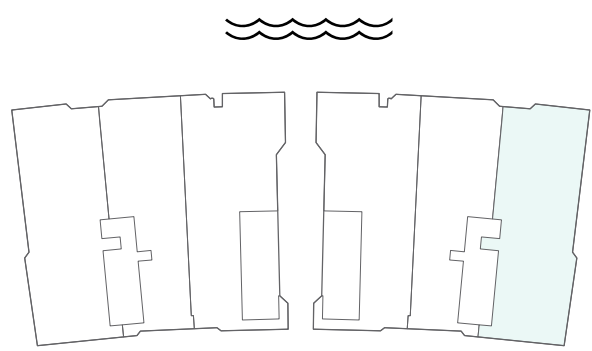
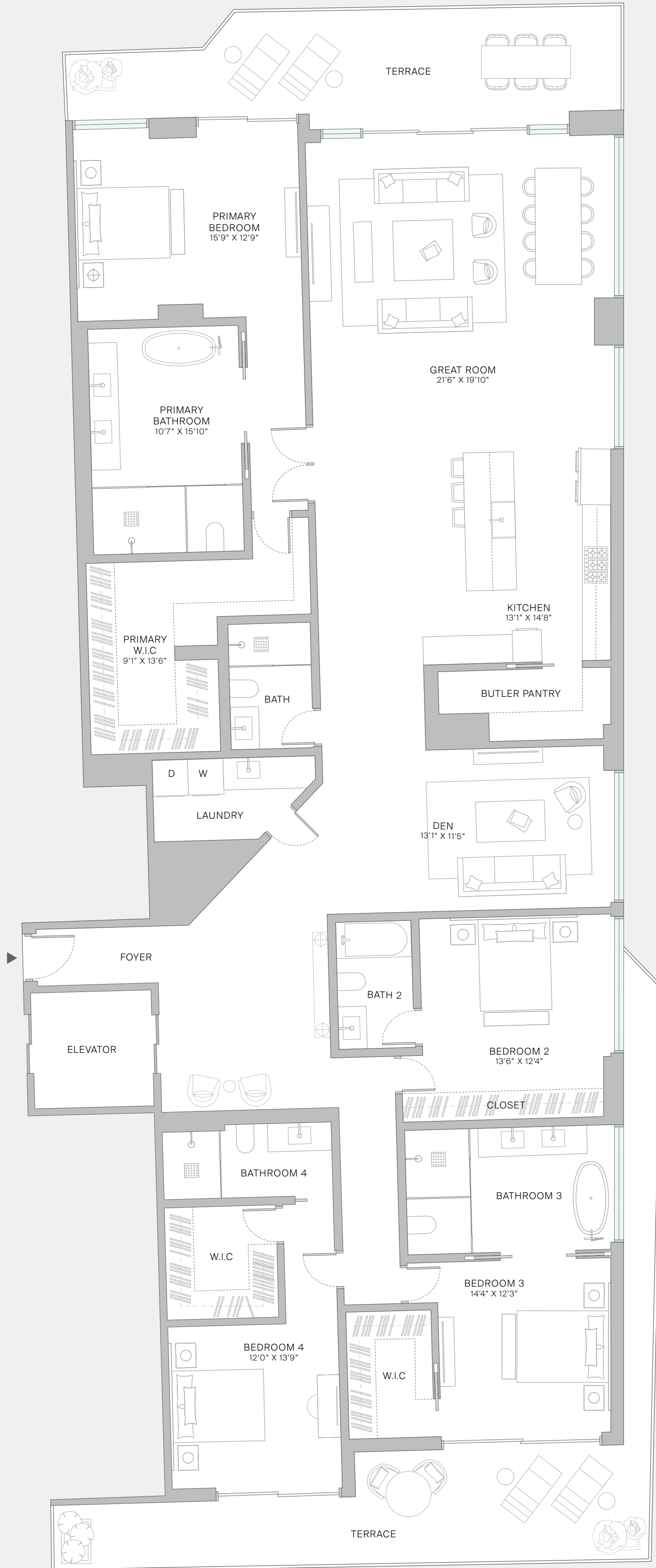
Residence
501

4 BEDROOM + DEN
5 BATHROOM

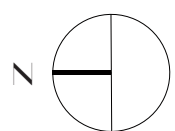
INTERIOR
3,421 SF / 317 SM

EXTERIOR
525 SF / 49 SM

TOTAL
3,946 SF / 366 SM



EAST BAY HARBOR DRIVE

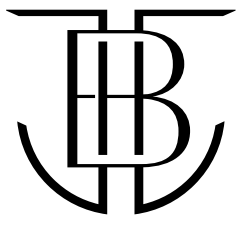


ORAL REPRESENTATIONS CANNOT BE RELIED UPON AS CORRECTLY STATING REPRESENTATIONS OF THE DEVELOPER. FOR CORRECT REPRESENTATIONS, MAKE REFERENCE TO THIS BROCHURE AND TO THE DOCUMENTS REQUIRED BY SECTION 718.503, FLORIDA STATUTES, TO BE FURNISHED BY A DEVELOPER TO A BUYER OR LESSEE.

This is not intended to be an offer to sell, or solicitation to buy, condominium units to residents of any jurisdiction where prohibited by law, and your eligibility for purchase will depend upon your state of residency. This offering is made only by the prospectus for the condominium and no statement should be relied upon if not made in the prospectus. The features, plans and specifications described or depicted herein are proposed only, and the Developer reserves the right to modify, revise or withdraw any or all of same in its sole discretion and without prior notice. Stated dimensions are measured to the exterior boundaries of the exterior walls and the centerline of interior demising walls and in fact vary from the dimensions that would be determined by using the description and definition of the "Unit" set forth in the Declaration (which generally only includes the interior airspace between the perimeter walls and excludes interior structural components). For your reference, the area of the Unit, determined in accordance with those defined unit boundaries, is the surveyor square footage of the unit. Note that measurements of rooms set forth on this floor plan are generally taken at the greatest points of each given room (as if the room were a perfect rectangle), without regard for any closets. Accordingly, the area of the actual room will typically be smaller than the product obtained by multiplying the stated length times width. All dimensions are approximate and may vary with actual construction, and all floor plans and development plans are subject to change. PPG DEVELOPMENT ("Named Party") is not the project Developer. This Condominium is being developed by PPG BHT Owner, LLC ("Developer"). Any and all statements, disclosures and/or representations shall be deemed made by Developer and not by Named Party and any purchaser agrees to look solely to Developer (and not to Named Party and/or any of its affiliates or principals) with respect to any and all matters relating to the marketing and/or development of the Condominium and with respect to the sales of units in the Condominium.



FORTUNE
DEVELOPMENT
SALES



BAY HARBOR
TOWERS

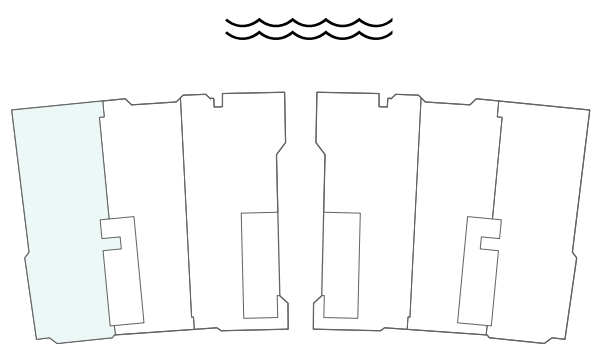
Residence
606

4 BEDROOM + DEN
5 BATHROOM

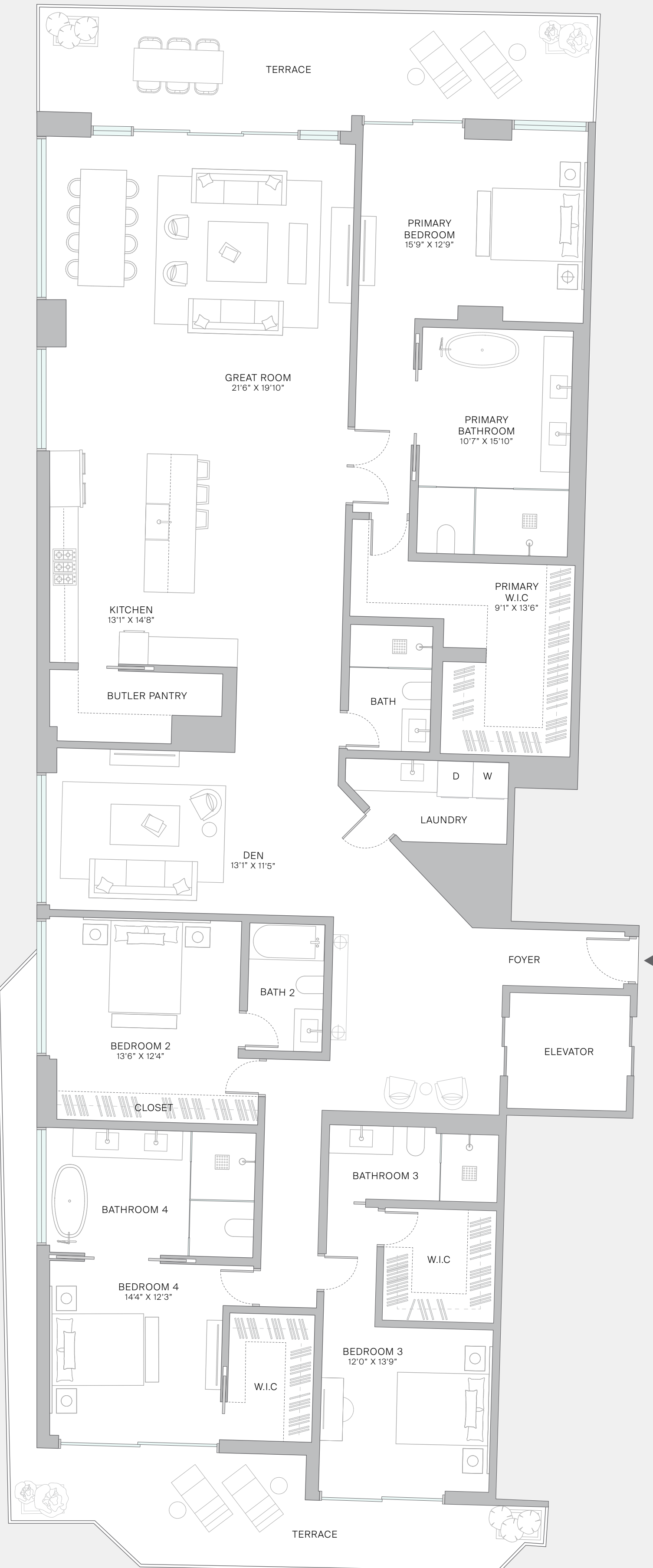
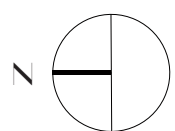
INTERIOR
3,421 SF / 317 SM

EXTERIOR
579 SF / 53 SM

TOTAL
4,000 SF / 371 SM



EAST BAY HARBOR DRIVE



ORAL REPRESENTATIONS CANNOT BE RELIED UPON AS CORRECTLY STATING REPRESENTATIONS OF THE DEVELOPER. FOR CORRECT REPRESENTATIONS, MAKE REFERENCE TO THIS BROCHURE AND TO THE DOCUMENTS REQUIRED BY SECTION 718.503, FLORIDA STATUTES, TO BE FURNISHED BY A DEVELOPER TO A BUYER OR LESSEE.

This is not intended to be an offer to sell, or solicitation to buy, condominium units to residents of any jurisdiction where prohibited by law, and your eligibility for purchase will depend upon your state of residency. This offering is made only by the prospectus for the condominium and no statement should be relied upon if not made in the prospectus. The features, plans and specifications described or depicted herein are proposed only, and the Developer reserves the right to modify, revise or withdraw any or all of same in its sole discretion and without prior notice. Stated dimensions are measured to the exterior boundaries of the exterior walls and the centerline of interior demising walls and in fact vary from the dimensions that would be determined by using the description and definition of the "Unit" set forth in the Declaration (which generally only includes the interior airspace between the perimeter walls and excludes interior structural components). For your reference, the area of the Unit, determined in accordance with those defined unit boundaries, is the surveyor square footage of the unit. Note that measurements of rooms set forth on this floor plan are generally taken at the greatest points of each given room (as if the room were a perfect rectangle), without regard for any cutouts. Accordingly, the area of the actual room will typically be smaller than the product obtained by multiplying the stated length times width. All dimensions are approximate and may vary with actual construction, and all floor plans and development plans are subject to change. PPG DEVELOPMENT ("Named Party") is not the project Developer. This Condominium is being developed by PPG BHT Owner, LLC ("Developer"). Any and all statements, disclosures and/or representations shall be deemed made by Developer and not by Named Party and any purchaser agrees to look solely to Developer (and not to Named Party and/or any of its affiliates or principals) with respect to any and all matters relating to the marketing and/or development of the Condominium and with respect to the sales of units in the Condominium.



FORTUNE
DEVELOPMENT
SALES