



CASSIA

THE RESIDENCES AT
CORAL GABLES

L1 RESIDENCE

1 Bedroom
1 Bathroom

Interior

724 SQ. SF. / 67 SQ. M²

Exterior

90 SQ. SF. / 8 SQ. M²

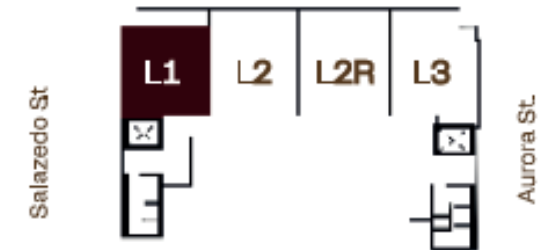
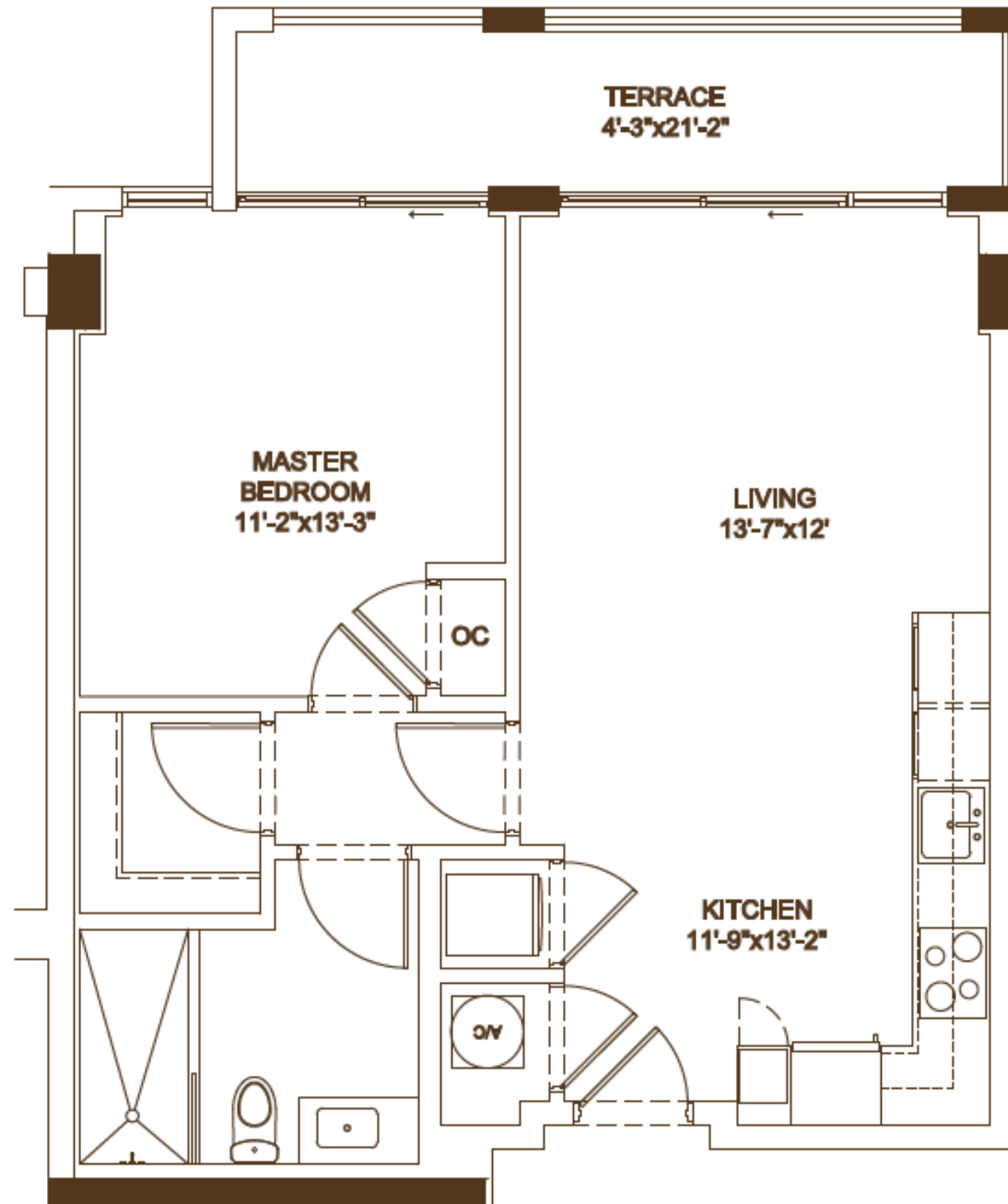
Total

814 SQ. SF. / 75 SQ. M²

Developed by



Sales & Marketing by



FLOORS 2 & 4



ALL ILLUSTRATIONS ARE ARTISTIC CONCEPTUAL RENDERINGS AND ARE SUBJECT TO CHANGE WITHOUT NOTICE. ORAL REPRESENTATIONS CANNOT BE RELIED UPON AS CORRECTLY STATING REPRESENTATIONS OF THE DEVELOPER. FOR CORRECT REPRESENTATIONS, MAKE REFERENCE TO THE DOCUMENTS REQUIRED BY SECTION 718.503, FLORIDA STATUTES, TO BE FURNISHED BY A DEVELOPER TO A BUYER OR LESSEE. 4011 SALZEDO CONDOMINIUM DEVELOPED BY ALTA CORAL GABLES LLC. STATED SQUARE FOOTAGES AND DIMENSIONS ARE MEASURED TO THE EXTERIOR BOUNDARIES OF THE EXTERIOR WALLS AND THE CENTERLINE OF INTERIOR DEMISING WALLS AND IN FACT VARY FROM SQUARE FOOTAGES AND DIMENSIONS THAT WOULD BE DETERMINED BY USING THE DESCRIPTION AND DEFINITION OF THE "UNIT" SET FORTH IN THE DECLARATION (WHICH GENERALLY ONLY INCLUDES THE INTERIOR AIRSPACE BETWEEN THE PERIMETER WALLS AND EXCLUDES ALL INTERIOR STRUCTURAL COMPONENTS AND OTHER COMMON ELEMENTS WITHIN THE PERIMETER WALL OF THE UNIT). THE DIMENSIONS STATED FOR THIS UNIT FLOOR PLAN ARE APPROXIMATE BECAUSE THERE ARE VARIOUS RECOGNIZED METHODS FOR CALCULATING THE SQUARE FOOTAGE OF A UNIT. THE SQUARE FOOTAGE HERE IS CALCULATED FROM THE EXTERIOR BOUNDARIES OF THE EXTERIOR WALLS TO THE CENTERLINE OF INTERIOR DEMISING WALLS WITHOUT DEDUCTIONS FOR CUTOUTS, CURVES, OR ARCHITECTURAL FEATURES. THIS METHOD TYPICALLY RESULTS IN QUOTED DIMENSIONS GREATER THAN THE DIMENSIONS THAT WOULD BE DETERMINED BY USING OTHER ACCEPTED METHODS. THE DEFINITION OF "UNIT" AND THE CALCULATION METHOD TO BE RELIED UPON IS SET FORTH IN THE DEVELOPER'S PROSPECTUS AND THE METHOD SET FORTH IN DEVELOPER'S PROSPECTUS MAY RESULT IN A SQUARE FOOTAGE CALCULATION LESS THAN THE WINDOWS, DOORS, CLOSETS, PLUMBING FIXTURES, MECHANICAL EQUIPMENT, APPLIANCES, STRUCTURAL ELEMENTS, ARCHITECTURAL DESIGN ELEMENTS, AND THE USES, CONFIGURATIONS, AND ENTRIES TO ROOMS MAY CHANGE BASED ON FINAL APPROVED PLANS, PERMITTING, AND COMPLETED CONSTRUCTION. THE FURNITURE PLAN AND THE USES OF SPACE ILLUSTRATED ARE SUGGESTED USES ONLY AND NOT INTENDED TO GUARANTEE OR REPRESENT ANY SPECIFIC USE OF SPACE, FURNISHINGS, DESIGN FEATURES, AND DECOR ILLUSTRATED ARE CONCEPTUAL AND ARE NOT INCLUDED WITH PURCHASE OF A UNIT. CONSULT THE DEVELOPER'S PROSPECTUS FOR INFORMATION ON WHAT IS OFFERED WITH THE UNIT AND THE CALCULATION OF THE UNIT SQUARE FOOTAGE AND DIMENSIONS.



CASSIA

THE RESIDENCES AT
CORAL GABLES

L2

RESIDENCE

1 Bedroom
1 Bathroom

Interior

701 SQ. SF. / 65 SQ. M²

Exterior

112 SQ. SF. / 10 SQ. M²

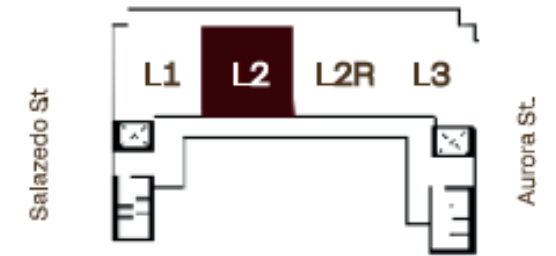
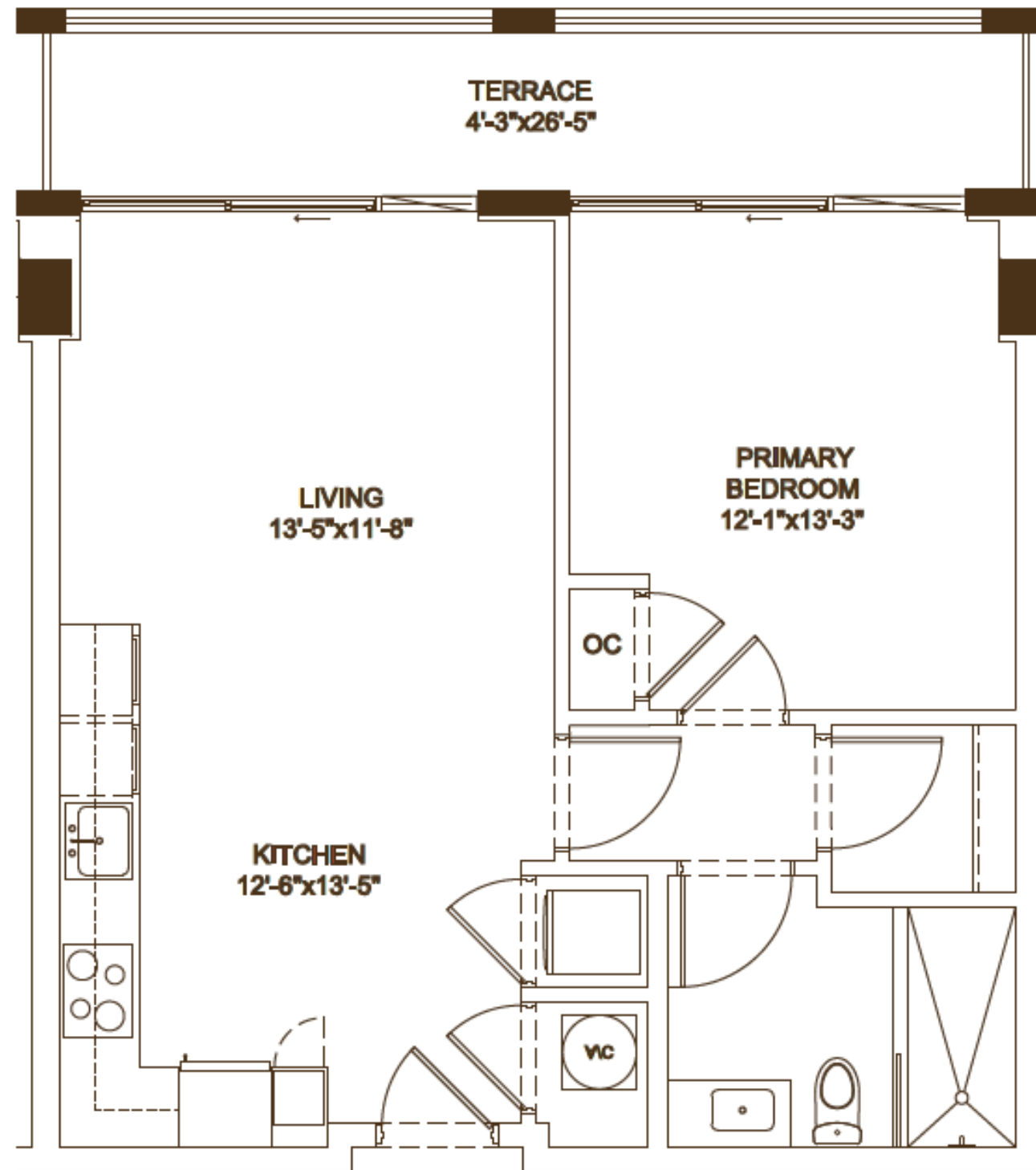
Total

813 SQ. SF. / 75 SQ. M²

Developed by



Sales & Marketing by



FLOORS 2 & 4



ALL ILLUSTRATIONS ARE ARTISTIC CONCEPTUAL RENDERINGS AND ARE SUBJECT TO CHANGE WITHOUT NOTICE, ORAL REPRESENTATIONS CANNOT BE RELIED UPON AS CORRECTLY STATTING REPRESENTATIONS OF THE DEVELOPER. FOR CORRECT REPRESENTATIONS, MAKE REFERENCE TO THE DOCUMENTS REQUIRED BY SECTION 718.503, FLORIDA STATUTES, TO BE FURNISHED BY A DEVELOPER TO A BUYER OR LESSEE. 4011 SALZEDO CONDOMINIUM DEVELOPED BY ALTA CORAL GABLES LLC. STATED DIMENSIONS ARE MEASURED TO THE EXTERIOR BOUNDARIES OF THE EXTERIOR WALLS AND THE CENTERLINE OF INTERIOR DEMISING WALLS AND IN FACT VARY FROM THE DIMENSIONS THAT WOULD BE DETERMINED BY USING THE DESCRIPTION AND DEFINITION OF THE "UNIT" SET FORTH IN THE DECLARATION (WHICH GENERALLY ONLY INCLUDES THE INTERIOR AIRSPACE BETWEEN THE PERIMETER WALLS AND EXCLUDES INTERIOR STRUCTURAL COMPONENTS). FOR YOUR REFERENCE, THE AREA OF THE UNIT, DETERMINED IN ACCORDANCE WITH THOSE DEFINED UNIT BOUNDARIES, IS SET FORTH ON EXHIBIT "3" TO THE DECLARATION. NOTE THAT MEASUREMENTS OF ROOMS SET FORTH ON THIS FLOOR PLAN ARE GENERALLY TAKEN AT THE GREATEST POINTS OF EACH GIVEN ROOM (AS IF THE ROOM WERE A PERFECT RECTANGLE), WITHOUT REGARD FOR ANY CUTOUTS. ACCORDINGLY, THE AREA OF THE ACTUAL ROOM WILL TYPICALLY BE SMALLER THAN THE PRODUCT OBTAINED BY MULTIPLYING THE STATED LENGTH TIMES WIDTH. ALL DIMENSIONS ARE APPROXIMATE AND MAY VARY WITH ACTUAL CONSTRUCTION, AND ALL FLOOR PLANS AND DEVELOPMENT PLANS ARE SUBJECT TO CHANGE. WITHOUT LIMITING THE FOREGOING, THE SIZE, DIMENSIONS AND LOCATIONS OF THE APPLIANCES AND SURROUNDING CABINETRY MAY BE MODIFIED, AND THE OVERALL LAYOUT OF THE KITCHEN MAY CHANGE FROM THAT WHICH IS DEPICTED HEREON.

Creative by Metrostudio.com



CASSIA
THE RESIDENCES AT
CORAL GABLES

L2R

RESIDENCE

1 Bedroom
1 Bathroom

Interior

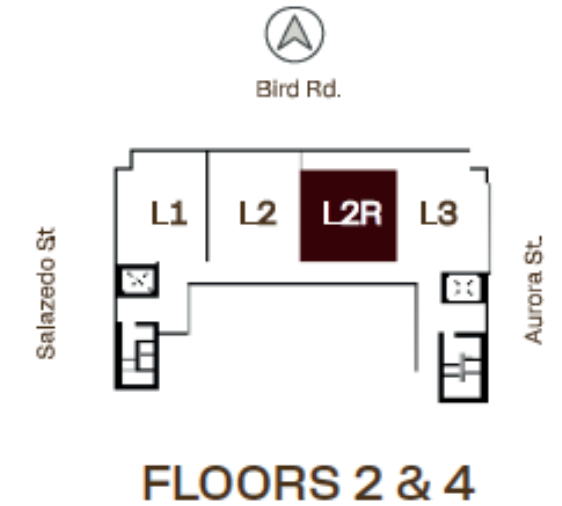
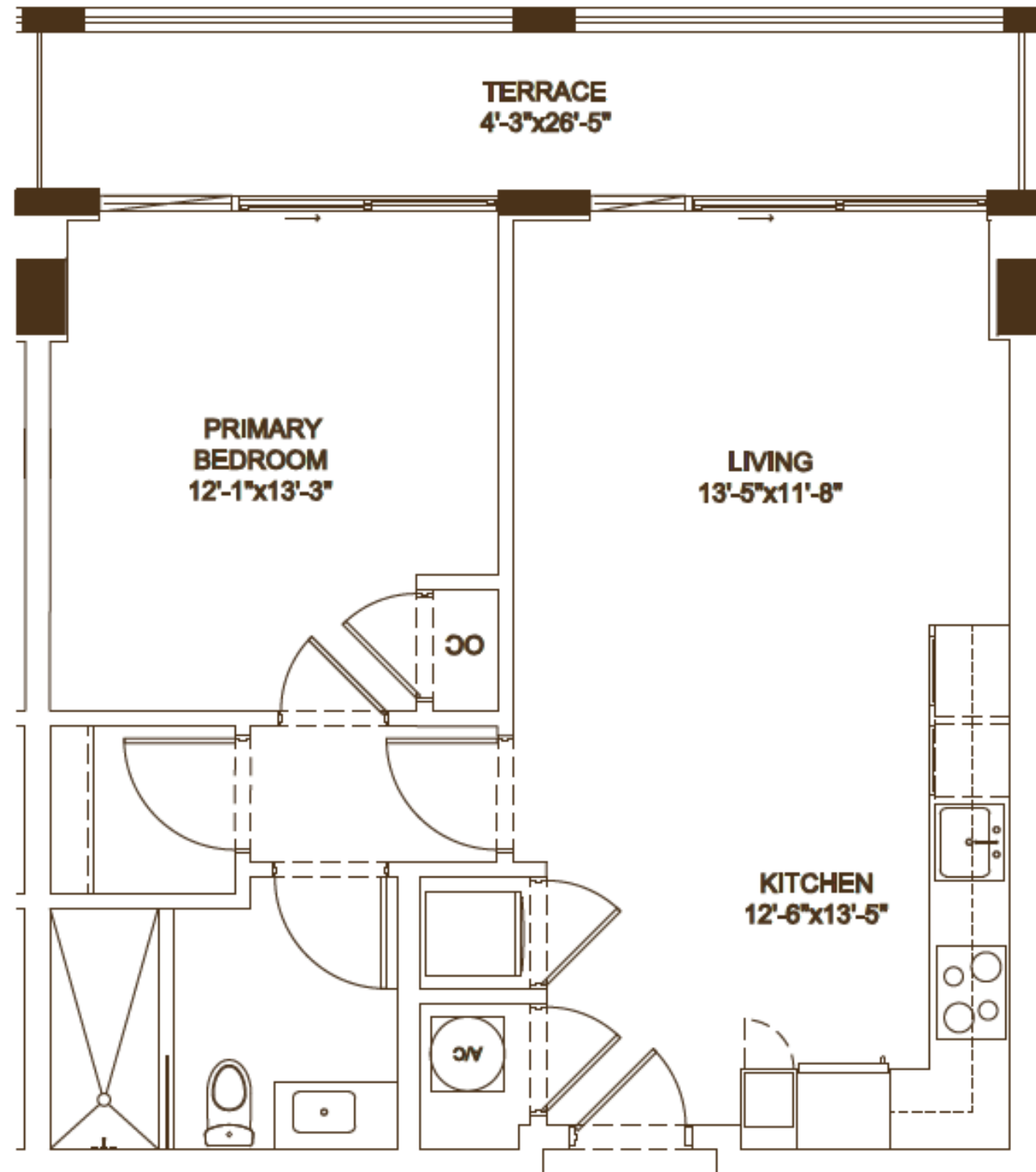
701 SQ. SF. / 65 SQ. M²

Exterior

112 SQ. SF. / 10 SQ. M²

Total

813 SQ. SF. / 75 SQ. M²



ALL ILLUSTRATIONS ARE ARTISTIC CONCEPTUAL RENDERINGS AND ARE SUBJECT TO CHANGE WITHOUT NOTICE. ORAL REPRESENTATIONS CANNOT BE RELIED UPON AS CORRECTLY STATING REPRESENTATIONS OF THE DEVELOPER. FOR CORRECT REPRESENTATIONS, MAKE REFERENCE TO THE DOCUMENTS REQUIRED BY SECTION 718.503, FLORIDA STATUTES, TO BE FURNISHED BY A DEVELOPER TO A BUYER OR LESSEE. 4011 SALZEDO CONDOMINIUM DEVELOPED BY ALTA CORAL GABLES LLC. STATED DIMENSIONS ARE MEASURED TO THE EXTERIOR BOUNDARIES OF THE EXTERIOR WALLS AND THE CENTERLINE OF INTERIOR DEMISING WALLS AND IN FACT VARY FROM THE DIMENSIONS THAT WOULD BE DETERMINED BY USING THE DESCRIPTION AND DEFINITION OF THE "UNIT" SET FORTH IN THE DECLARATION (WHICH GENERALLY ONLY INCLUDES THE INTERIOR AIRSPACE BETWEEN THE PERIMETER WALLS AND EXCLUDES INTERIOR STRUCTURAL COMPONENTS). FOR YOUR REFERENCE, THE AREA OF THE UNIT, DETERMINED IN ACCORDANCE WITH THOSE DEFINED UNIT BOUNDARIES, IS SET FORTH ON EXHIBIT "3" TO THE DECLARATION. NOTE THAT MEASUREMENTS OF ROOMS SET FORTH ON THIS FLOOR PLAN ARE GENERALLY TAKEN AT THE GREATEST POINTS OF EACH GIVEN ROOM (AS IF THE ROOM WERE A PERFECT RECTANGLE), WITHOUT REGARD FOR ANY CUTOUTS. ACCORDINGLY, THE AREA OF THE ACTUAL ROOM WILL TYPICALLY BE SMALLER THAN THE PRODUCT OBTAINED BY MULTIPLYING THE STATED LENGTH TIMES WIDTH. ALL DIMENSIONS ARE APPROXIMATE AND MAY VARY WITH ACTUAL CONSTRUCTION, AND ALL FLOOR PLANS AND DEVELOPMENT PLANS ARE SUBJECT TO CHANGE. WITHOUT LIMITING THE FOREGOING, THE SIZE, DIMENSIONS AND LOCATIONS OF THE APPLIANCES AND SURROUNDING CABINETS MAY BE MODIFIED, AND THE OVERALL LAYOUT OF THE KITCHEN MAY CHANGE FROM THAT WHICH IS DEPICTED HEREON.

Creative by Metrostudio.com



CASSIA

THE RESIDENCES AT
CORAL GABLES

L3

RESIDENCE

1 Bedroom
1 Bathroom

Interior

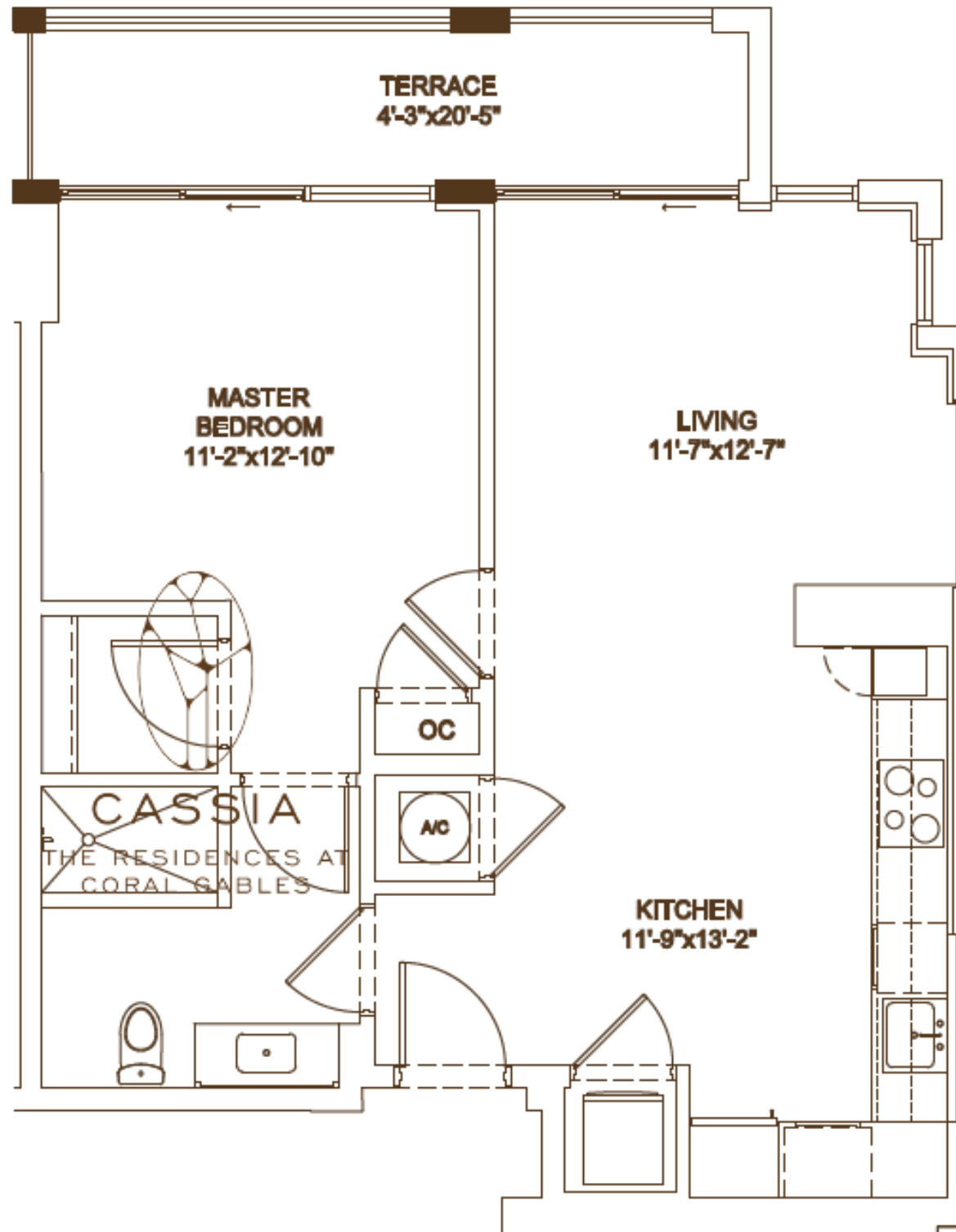
737 SQ. SF. / 68 SQ. M²

Exterior

87 SQ. SF. / 8 SQ. M²

Total

824 SQ. SF. / 76 SQ. M²



Developed by



Sales & Marketing by



ALL ILLUSTRATIONS ARE ARTISTIC CONCEPTUAL RENDERINGS AND ARE SUBJECT TO CHANGE WITHOUT NOTICE. ORAL REPRESENTATIONS CANNOT BE RELIED UPON AS CORRECTLY STATING REPRESENTATIONS OF THE DEVELOPER. FOR CORRECT REPRESENTATIONS, MAKE REFERENCE TO THE DOCUMENTS REQUIRED BY SECTION 718.503, FLORIDA STATUTES, TO BE FURNISHED BY A DEVELOPER TO A BUYER OR LESSEE. 4011 SALZEDO CONDOMINIUM DEVELOPED BY ALTA CORAL GABLES LLC. STATED SQUARE FOOTAGES AND DIMENSIONS ARE MEASURED TO THE EXTERIOR BOUNDARIES OF THE EXTERIOR WALLS AND THE CENTERLINE OF INTERIOR DEMISING WALLS AND IN FACT VARY FROM SQUARE FOOTAGES AND DIMENSIONS THAT WOULD BE DETERMINED BY USING THE DESCRIPTION AND DEFINITION OF THE "UNIT" SET FORTH IN THE DECLARATION (WHICH GENERALLY ONLY INCLUDES THE INTERIOR AIRSPACE BETWEEN THE PERIMETER WALLS AND EXCLUDES ALL INTERIOR STRUCTURAL COMPONENTS AND OTHER COMMON ELEMENTS WITHIN THE PERIMETER WALL OF THE UNIT) THE DIMENSIONS STATED FOR THIS UNIT FLOOR PLAN ARE APPROXIMATE BECAUSE THERE ARE VARIOUS RECOGNIZED METHODS FOR CALCULATING THE SQUARE FOOTAGE OF A UNIT. THE SQUARE FOOTAGE HERE IS CALCULATED FROM THE EXTERIOR BOUNDARIES OF THE EXTERIOR WALLS TO THE CENTERLINE OF INTERIOR DEMISING WALLS WITHOUT DEDUCTIONS FOR CUTOUTS, CURVES, OR ARCHITECTURAL FEATURES. THIS METHOD TYPICALLY RESULTS IN QUOTED DIMENSIONS GREATER THAN THE DIMENSIONS THAT WOULD BE DETERMINED BY USING OTHER ACCEPTED METHODS. THE DEFINITION OF "UNIT" AND THE CALCULATION METHOD TO BE RELIED UPON IS SET FORTH IN THE DEVELOPER'S PROSPECTUS AND THE METHOD SET FORTH IN DEVELOPER'S PROSPECTUS MAY RESULT IN A SQUARE FOOTAGE CALCULATION LESS THAN THE WINDOWS, DOORS, CLOSETS, PLUMBING FIXTURES, MECHANICAL EQUIPMENT, APPLIANCES, STRUCTURAL ELEMENTS, ARCHITECTURAL DESIGN ELEMENTS, AND THE USES, CONFIGURATIONS, AND ENTRIES TO ROOMS MAY CHANGE BASED ON FINAL APPROVED PLANS, PERMITTING, AND COMPLETED CONSTRUCTION. THE FURNITURE PLAN AND THE USES OF SPACE ILLUSTRATED ARE SUGGESTED USES ONLY AND NOT INTENDED TO GUARANTEE OR REPRESENT ANY SPECIFIC USE OF SPACE, FURNISHINGS, DESIGN FEATURES, AND DECOR ILLUSTRATED ARE CONCEPTUAL AND ARE NOT INCLUDED WITH PURCHASE OF A UNIT, CONSULT THE DEVELOPER'S PROSPECTUS FOR INFORMATION ON WHAT IS OFFERED WITH THE UNIT AND THE CALCULATION OF THE UNIT SQUARE FOOTAGE AND DIMENSIONS.

Created by Metrostudio.com



CASSIA
THE RESIDENCES AT
CORAL GABLES

B4 L

RESIDENCE

2 Bedroom
2 Bathroom

Interior
1,004 SQ. SF. / 93 SQ. M²

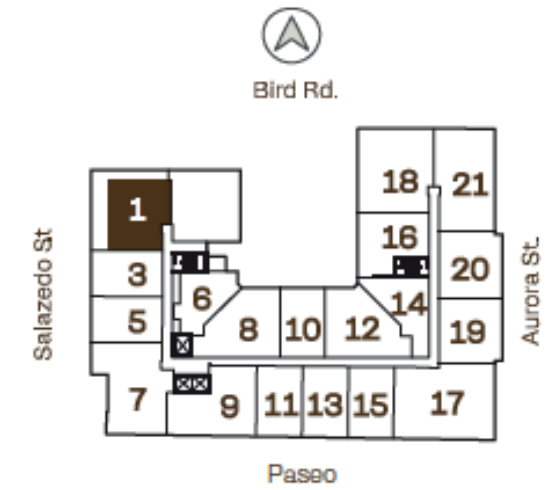
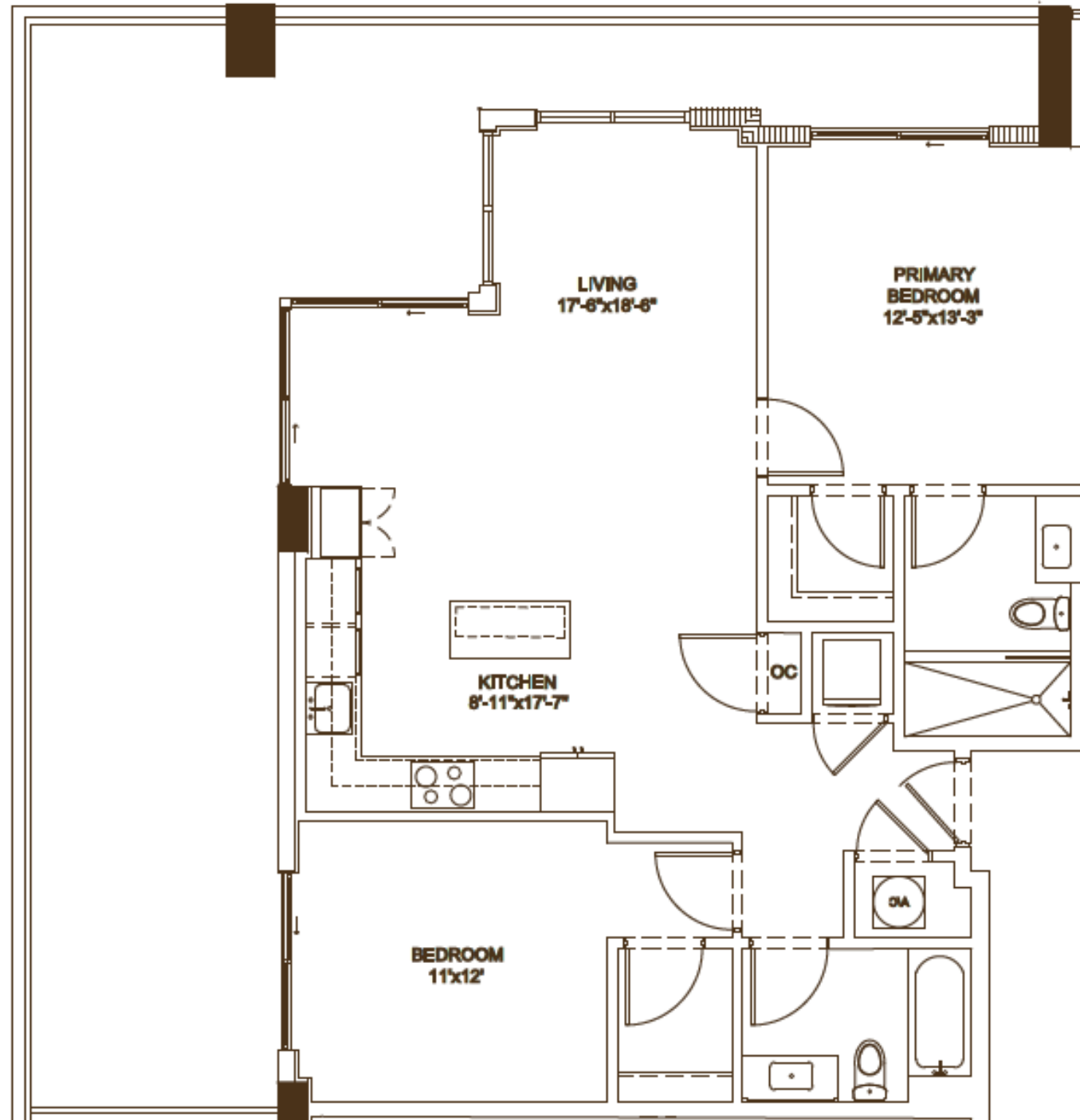
Exterior
411 SQ. SF. / 38 SQ.²M

Total
1,415 SQ. SF. / 144 SQ. M²

Developed by



Sales & Marketing by



LINE 01
5TH FLOOR



ALL ILLUSTRATIONS ARE ARTISTIC CONCEPTUAL RENDERINGS AND ARE SUBJECT TO CHANGE WITHOUT NOTICE, ORAL REPRESENTATIONS CANNOT BE RELIED UPON AS CORRECTLY STATING REPRESENTATIONS OF THE DEVELOPER. FOR CORRECT REPRESENTATIONS, MAKE REFERENCE TO THE DOCUMENTS REQUIRED BY SECTION 718.503, FLORIDA STATUTES, TO BE FURNISHED BY A DEVELOPER TO A BUYER OR LESSEE. 4011 SALZEDO CONDOMINIUM DEVELOPED BY ALTA CORAL GABLES LLC. STATED DIMENSIONS ARE MEASURED TO THE EXTERIOR BOUNDARIES OF THE EXTERIOR WALLS AND THE CENTERLINE OF INTERIOR DEMISING WALLS AND IN FACT VARY FROM THE DIMENSIONS THAT WOULD BE DETERMINED BY USING THE DESCRIPTION AND DEFINITION OF THE "UNIT" SET FORTH IN THE DECLARATION (WHICH GENERALLY ONLY INCLUDES THE INTERIOR AIRSPACE BETWEEN THE PERIMETER WALLS AND EXCLUDES INTERIOR STRUCTURAL COMPONENTS). FOR YOUR REFERENCE, THE AREA OF THE UNIT, DETERMINED IN ACCORDANCE WITH THOSE DEFINED UNIT BOUNDARIES, IS SET FORTH ON EXHIBIT "3" TO THE DECLARATION. NOTE THAT MEASUREMENTS OF ROOMS SET FORTH ON THIS FLOOR PLAN ARE GENERALLY TAKEN AT THE GREATEST POINTS OF EACH GIVEN ROOM (AS IF THE ROOM WERE A PERFECT RECTANGLE), WITHOUT REGARD FOR ANY CUTOUTS. ACCORDINGLY, THE AREA OF THE ACTUAL ROOM WILL TYPICALLY BE SMALLER THAN THE PRODUCT OBTAINED BY MULTIPLYING THE STATED LENGTH TIMES WIDTH. ALL DIMENSIONS ARE APPROXIMATE AND MAY VARY WITH ACTUAL CONSTRUCTION, AND ALL FLOOR PLANS AND DEVELOPMENT PLANS ARE SUBJECT TO CHANGE. WITHOUT LIMITING THE FOREGOING, THE SIZE, DIMENSIONS AND LOCATIONS OF THE APPLIANCES AND SURROUNDING CABINETRY MAY BE MODIFIED, AND THE OVERALL LAYOUT OF THE KITCHEN MAY CHANGE FROM THAT WHICH IS DEPICTED HEREON.



CASSIA

THE RESIDENCES AT
CORAL GABLES

A1 ADA

RESIDENCE

1 Bedroom
1 Bathroom

Interior

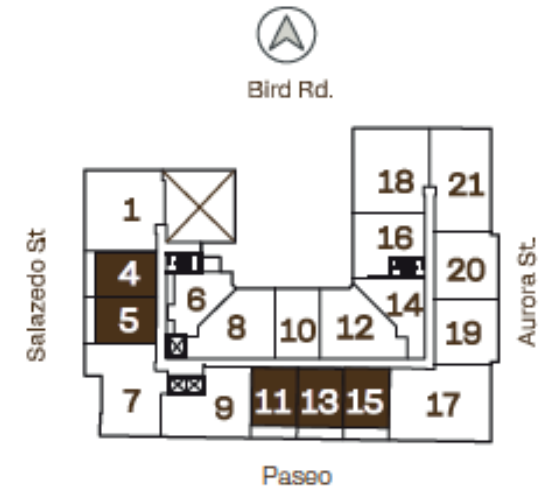
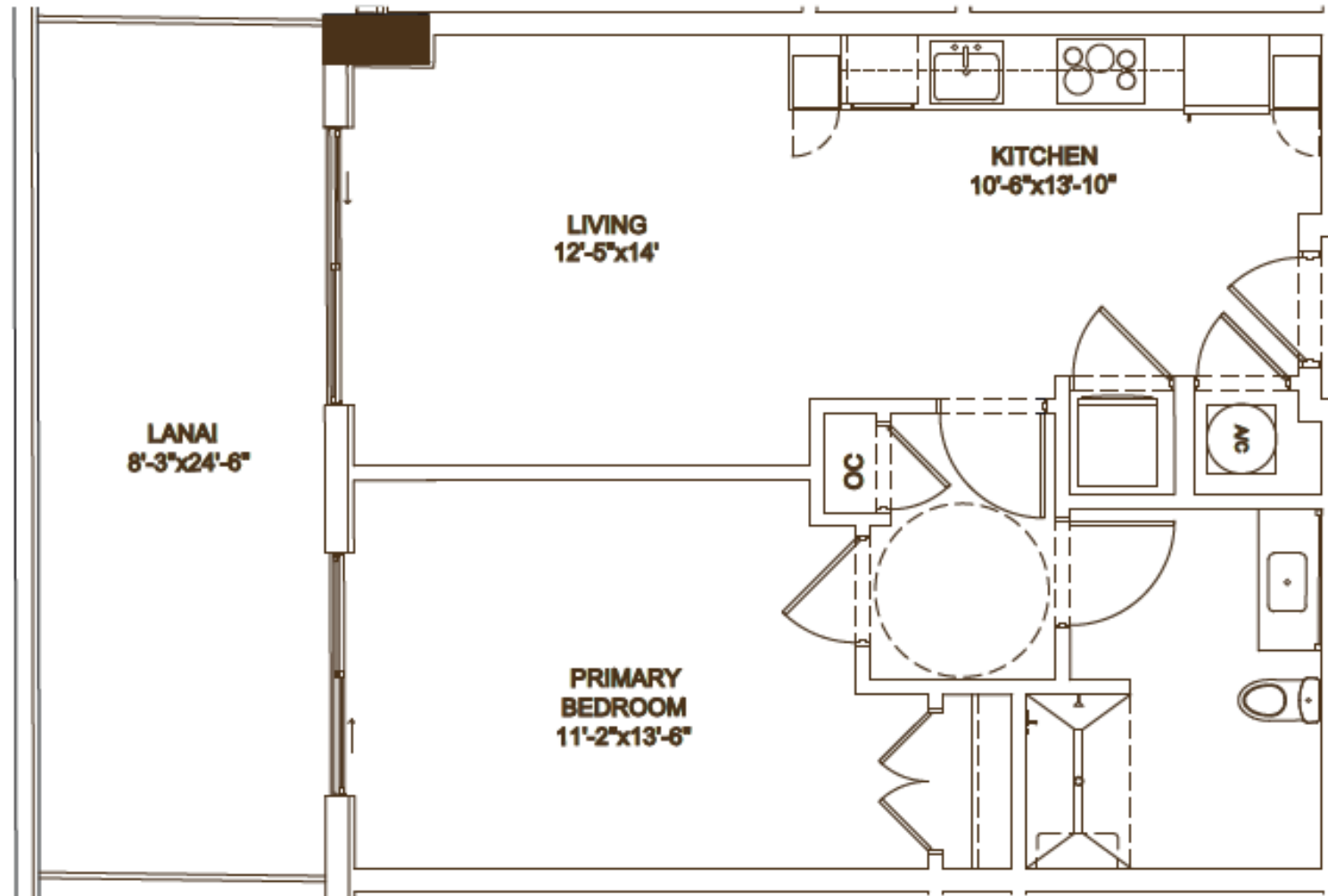
686 SQ. SF. / 63 SQ. M²

Exterior

202 SQ. SF. / 18 SQ. M²

Total

888 SQ. SF. / 82 SQ. M²



ADA 1 BED 5TH FLOOR



Developed by



Sales & Marketing by



ALL ILLUSTRATIONS ARE ARTISTIC CONCEPTUAL RENDERINGS AND ARE SUBJECT TO CHANGE WITHOUT NOTICE. ORAL REPRESENTATIONS CANNOT BE RELIED UPON AS CORRECTLY STATING REPRESENTATIONS OF THE DEVELOPER. FOR CORRECT REPRESENTATIONS, MAKE REFERENCE TO THE DOCUMENTS REQUIRED BY SECTION 718.503, FLORIDA STATUTES, TO BE FURNISHED BY A DEVELOPER TO A BUYER OR LESSEE. 4011 SALZEDO CONDOMINIUM DEVELOPED BY ALTA CORAL GABLES LLC. STATED DIMENSIONS ARE MEASURED TO THE EXTERIOR BOUNDARIES OF THE EXTERIOR WALLS AND THE CENTERLINE OF INTERIOR DEMISING WALLS AND IN FACT VARY FROM THE DIMENSIONS THAT WOULD BE DETERMINED BY USING THE DESCRIPTION AND DEFINITION OF THE "UNIT" SET FORTH IN THE DECLARATION (WHICH GENERALLY ONLY INCLUDES THE INTERIOR AIRSPACE BETWEEN THE PERIMETER WALLS AND EXCLUDES INTERIOR STRUCTURAL COMPONENTS). FOR YOUR REFERENCE, THE AREA OF THE UNIT, DETERMINED IN ACCORDANCE WITH THOSE DEFINED UNIT BOUNDARIES, IS SET FORTH ON EXHIBIT "3" TO THE DECLARATION. NOTE THAT MEASUREMENTS OF ROOMS SET FORTH ON THIS FLOOR PLAN ARE GENERALLY TAKEN AT THE GREATEST POINTS OF EACH GIVEN ROOM (AS IF THE ROOM WERE A PERFECT RECTANGLE), WITHOUT REGARD FOR ANY CUTOUTS. ACCORDINGLY, THE AREA OF THE ACTUAL ROOM WILL TYPICALLY BE SMALLER THAN THE PRODUCT OBTAINED BY MULTIPLYING THE STATED LENGTH TIMES WIDTH. ALL DIMENSIONS ARE APPROXIMATE AND MAY VARY WITH ACTUAL CONSTRUCTION, AND ALL FLOOR PLANS AND DEVELOPMENT PLANS ARE SUBJECT TO CHANGE. WITHOUT LIMITING THE FOREGOING, THE SIZE, DIMENSIONS AND LOCATIONS OF THE APPLIANCES AND SURROUNDING CABINETRY MAY BE MODIFIED, AND THE OVERALL LAYOUT OF THE KITCHEN MAY CHANGE FROM THAT WHICH IS DEPICTED HEREON.

Creative by Metrostudio.com



CASSIA

THE RESIDENCES AT
CORAL GABLES

B5 L RESIDENCE

2 Bedroom
2 Bathroom

Interior

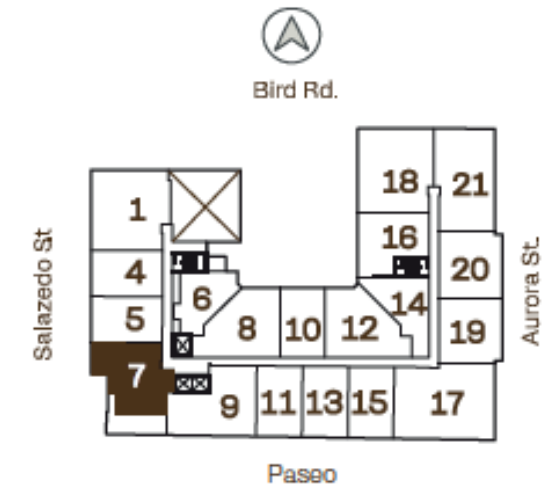
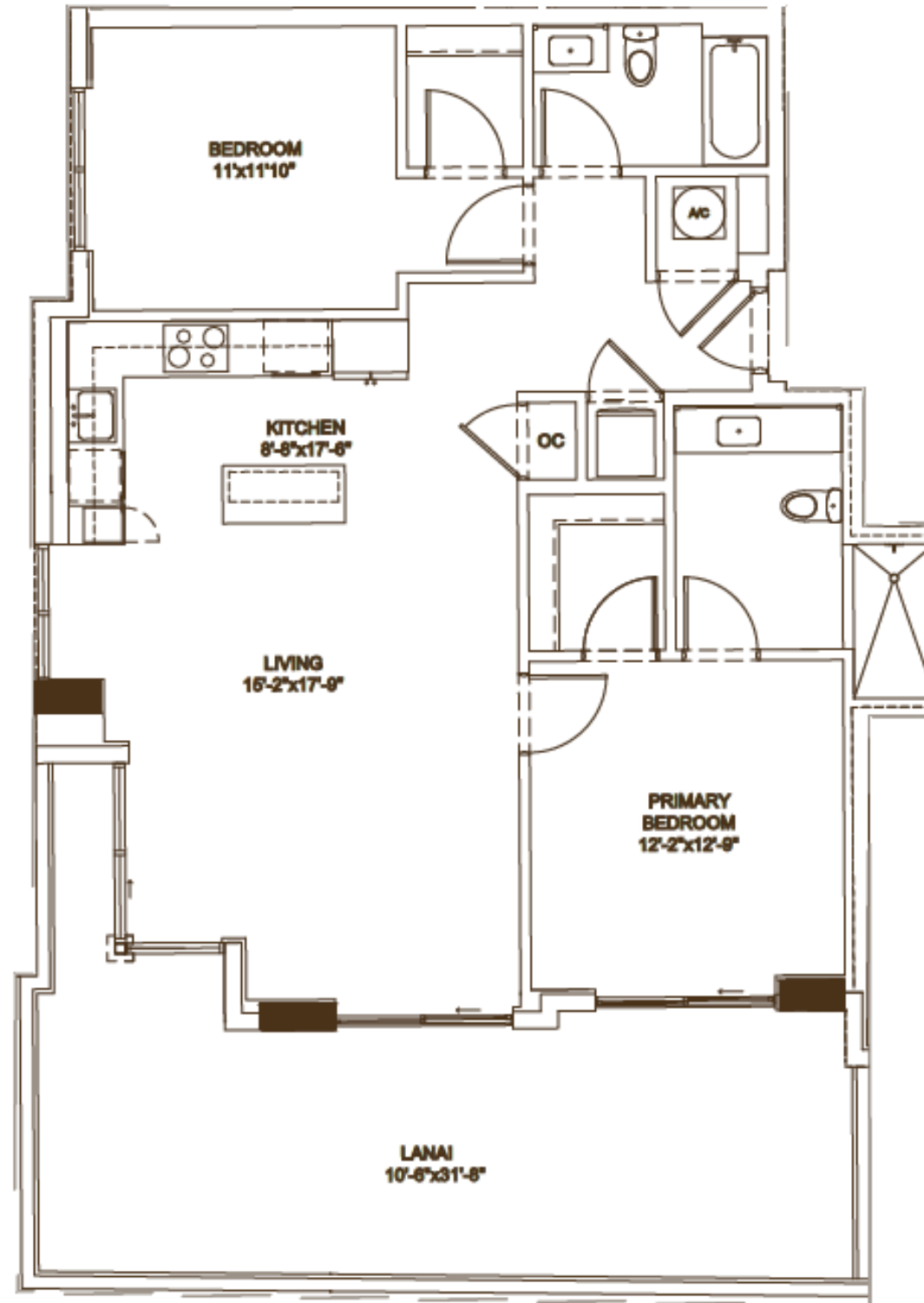
1,160 SQ. SF. / 108 SQ. M²

Exterior

381 SQ. SF. / 35 SQ. M²

Total

1,541 SQ. SF. / 143 SQ. M²



LINE 07 5TH FLOOR



Developed by



Sales & Marketing by



ALL ILLUSTRATIONS ARE ARTISTIC CONCEPTUAL RENDERINGS AND ARE SUBJECT TO CHANGE WITHOUT NOTICE, ORAL REPRESENTATIONS CANNOT BE RELIED UPON AS CORRECTLY STATING REPRESENTATIONS OF THE DEVELOPER. FOR CORRECT REPRESENTATIONS, MAKE REFERENCE TO THE DOCUMENTS REQUIRED BY SECTION 718.503, FLORIDA STATUTES, TO BE FURNISHED BY A DEVELOPER TO A BUYER OR LESSEE. 4011 SALZEDO CONDOMINIUM DEVELOPED BY ALTA CORAL GABLES LLC. STATED DIMENSIONS ARE MEASURED TO THE EXTERIOR BOUNDARIES OF THE EXTERIOR WALLS AND THE CENTERLINE OF INTERIOR DEMISING WALLS AND IN FACT VARY FROM THE DIMENSIONS THAT WOULD BE DETERMINED BY USING THE DESCRIPTION AND DEFINITION OF THE "UNIT" SET FORTH IN THE DECLARATION (WHICH GENERALLY ONLY INCLUDES THE INTERIOR AIRSPACE BETWEEN THE PERIMETER WALLS AND EXCLUDES INTERIOR STRUCTURAL COMPONENTS). FOR YOUR REFERENCE, THE AREA OF THE UNIT, DETERMINED IN ACCORDANCE WITH THOSE DEFINED UNIT BOUNDARIES, IS SET FORTH ON EXHIBIT "3" TO THE DECLARATION. NOTE THAT MEASUREMENTS OF ROOMS SET FORTH ON THIS FLOOR PLAN ARE GENERALLY TAKEN AT THE GREATEST POINTS OF EACH GIVEN ROOM (AS IF THE ROOM WERE A PERFECT RECTANGLE), WITHOUT REGARD FOR ANY CUTOUTS. ACCORDINGLY, THE AREA OF THE ACTUAL ROOM WILL TYPICALLY BE SMALLER THAN THE PRODUCT OBTAINED BY MULTIPLYING THE STATED LENGTH TIMES WIDTH. ALL DIMENSIONS ARE APPROXIMATE AND MAY VARY WITH ACTUAL CONSTRUCTION, AND ALL FLOOR PLANS AND DEVELOPMENT PLANS ARE SUBJECT TO CHANGE. WITHOUT LIMITING THE FOREGOING, THE SIZE, DIMENSIONS AND LOCATIONS OF THE APPLIANCES AND SURROUNDING CABINETRY MAY BE MODIFIED, AND THE OVERALL LAYOUT OF THE KITCHEN MAY CHANGE FROM THAT WHICH IS DEPICTED HEREON.

Creative by Metrostudio.com



CASSIA

THE RESIDENCES AT
CORAL GABLES

B6 L ADA

RESIDENCE

2 Bedroom
2 Bathroom

Interior

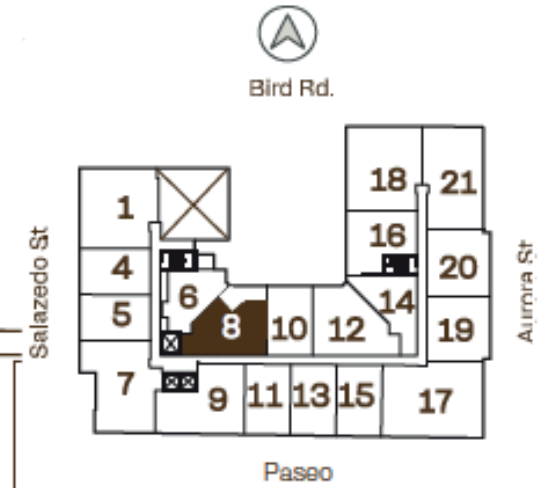
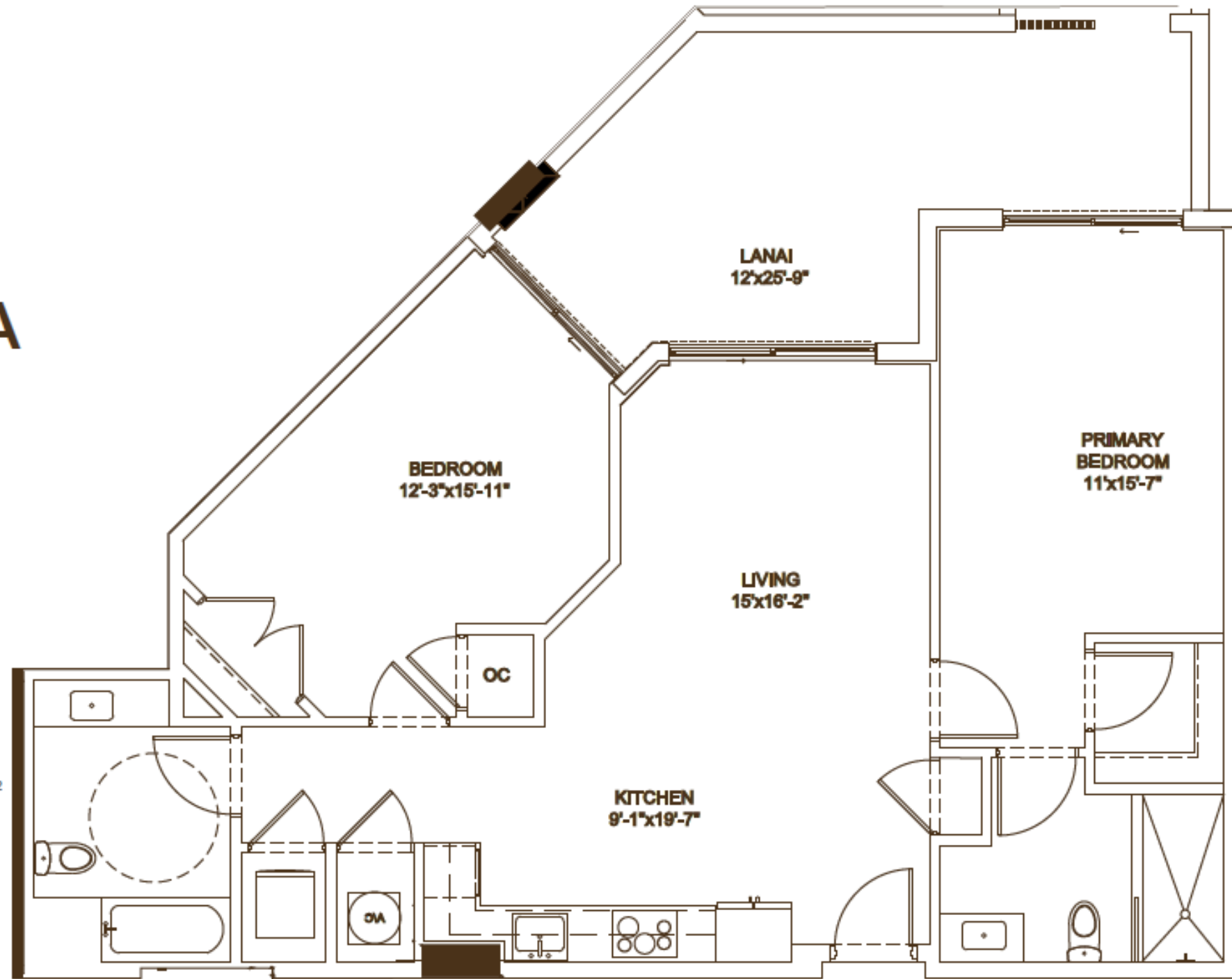
1127 SQ. SF. / 105 SQ. M²

Exterior

309 SQ. SF. / 28 SQ. M²

Total

1,436 SQ. SF. / 133 SQ. M²



**ADA 2 BED
5TH FLOOR**

Developed by



Sales & Marketing by



ALL ILLUSTRATIONS ARE ARTISTIC CONCEPTUAL RENDERINGS AND ARE SUBJECT TO CHANGE WITHOUT NOTICE, ORAL REPRESENTATIONS CANNOT BE RELIED UPON AS CORRECTLY STATING REPRESENTATIONS OF THE DEVELOPER. FOR CORRECT REPRESENTATIONS, MAKE REFERENCE TO THE DOCUMENTS REQUIRED BY SECTION 718.503, FLORIDA STATUTES, TO BE FURNISHED BY A DEVELOPER TO A BUYER OR LESSEE. 4011 SALZEDO CONDOMINIUM DEVELOPED BY ALTA CORAL GABLES LLC. STATED DIMENSIONS ARE MEASURED TO THE EXTERIOR BOUNDARIES OF THE EXTERIOR WALLS AND THE CENTERLINE OF INTERIOR DEMISING WALLS AND IN FACT VARY FROM THE DIMENSIONS THAT WOULD BE DETERMINED BY USING THE DESCRIPTION AND DEFINITION OF THE "UNIT" SET FORTH IN THE DECLARATION (WHICH GENERALLY ONLY INCLUDES THE INTERIOR AIRSPACE BETWEEN THE PERIMETER WALLS AND EXCLUDES INTERIOR STRUCTURAL COMPONENTS). FOR YOUR REFERENCE, THE AREA OF THE UNIT, DETERMINED IN ACCORDANCE WITH THOSE DEFINED UNIT BOUNDARIES, IS SET FORTH ON EXHIBIT "3" TO THE DECLARATION. NOTE THAT MEASUREMENTS OF ROOMS SET FORTH ON THIS FLOOR PLAN ARE GENERALLY TAKEN AT THE GREATEST POINTS OF EACH GIVEN ROOM (AS IF THE ROOM WERE A PERFECT RECTANGLE), WITHOUT REGARD FOR ANY CUTOUTS. ACCORDINGLY, THE AREA OF THE ACTUAL ROOM WILL TYPICALLY BE SMALLER THAN THE PRODUCT OBTAINED BY MULTIPLYING THE STATED LENGTH TIMES WIDTH. ALL DIMENSIONS ARE APPROXIMATE AND MAY VARY WITH ACTUAL CONSTRUCTION, AND ALL FLOOR PLANS AND DEVELOPMENT PLANS ARE SUBJECT TO CHANGE. WITHOUT LIMITING THE FOREGOING, THE SIZE, DIMENSIONS AND LOCATIONS OF THE APPLIANCES AND SURROUNDING CABINETRY MAY BE MODIFIED, AND THE OVERALL LAYOUT OF THE KITCHEN MAY CHANGE FROM THAT WHICH IS DEPICTED HEREON.

Creative by Metrostudio.com



CASSIA
THE RESIDENCES AT
CORAL GABLES

B3 L

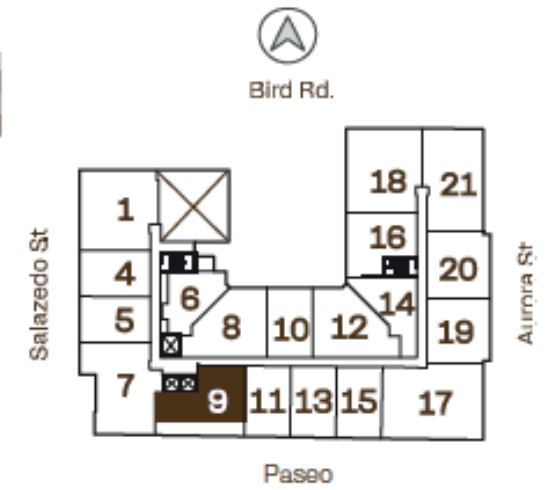
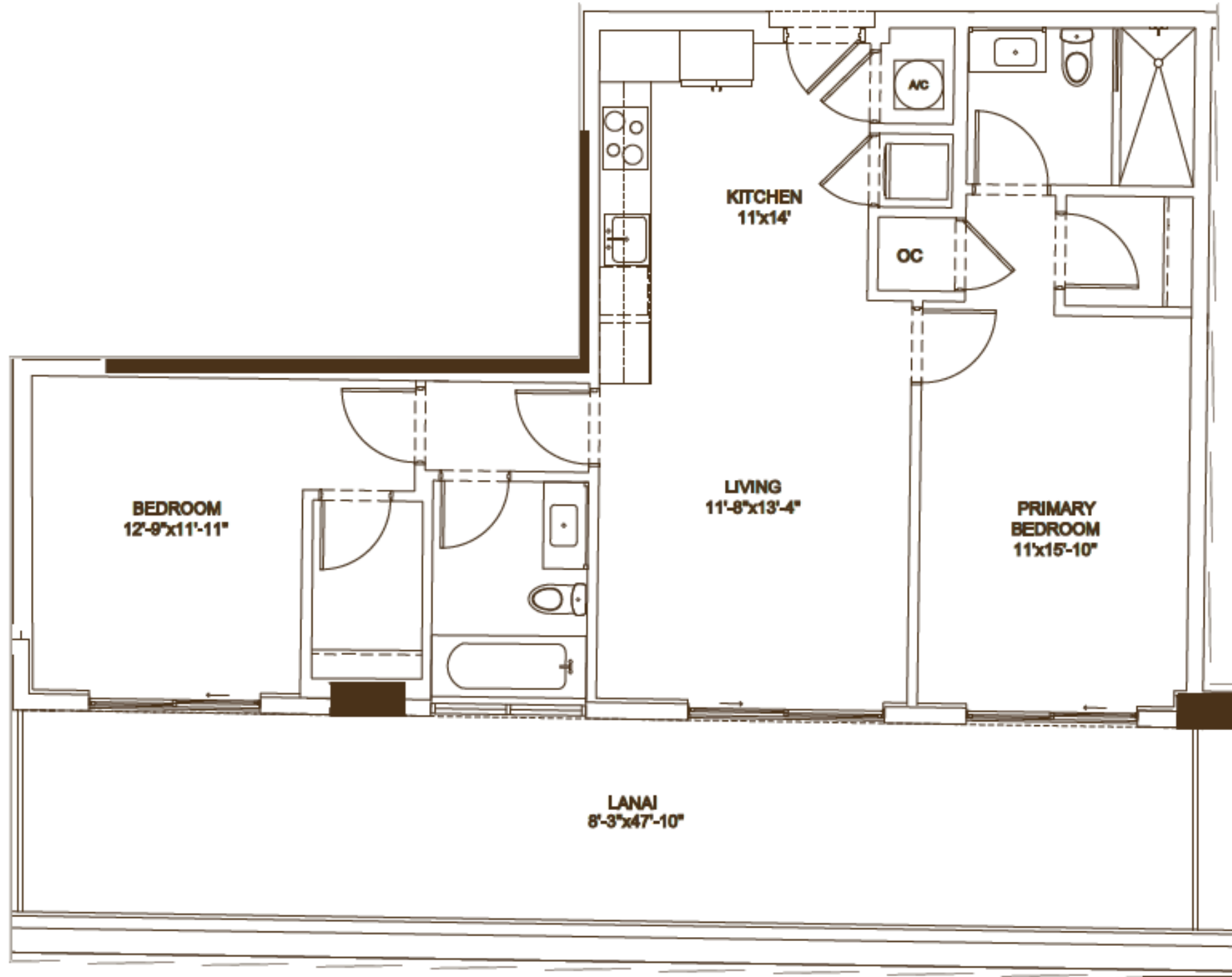
RESIDENCE

2 Bedroom
2 Bathroom

Interior
1,048 SQ. SF. / 97 SQ. M²

Exterior
476 SQ. SF. / 44 SQ. M²

Total
1,524 SQ. SF. / 141 SQ. M²



LINE 09
5TH FLOOR



Developed by



Sales & Marketing by



ALL ILLUSTRATIONS ARE ARTISTIC CONCEPTUAL RENDERINGS AND ARE SUBJECT TO CHANGE WITHOUT NOTICE, ORAL REPRESENTATIONS CANNOT BE RELIED UPON AS CORRECTLY STATING REPRESENTATIONS OF THE DEVELOPER. FOR CORRECT REPRESENTATIONS, MAKE REFERENCE TO THE DOCUMENTS REQUIRED BY SECTION 718.503, FLORIDA STATUTES, TO BE FURNISHED BY A DEVELOPER TO A BUYER OR LESSEE. 4011 SALZEDO CONDOMINIUM DEVELOPED BY ALTA CORAL GABLES LLC. STATED DIMENSIONS ARE MEASURED TO THE EXTERIOR BOUNDARIES OF THE EXTERIOR WALLS AND THE CENTERLINE OF INTERIOR DEMISING WALLS AND IN FACT VARY FROM THE DIMENSIONS THAT WOULD BE DETERMINED BY USING THE DESCRIPTION AND DEFINITION OF THE "UNIT" SET FORTH IN THE DECLARATION (WHICH GENERALLY ONLY INCLUDES THE INTERIOR AIRSPACE BETWEEN THE PERIMETER WALLS AND EXCLUDES INTERIOR STRUCTURAL COMPONENTS). FOR YOUR REFERENCE, THE AREA OF THE UNIT, DETERMINED IN ACCORDANCE WITH THOSE DEFINED UNIT BOUNDARIES, IS SET FORTH ON EXHIBIT "3" TO THE DECLARATION. NOTE THAT MEASUREMENTS OF ROOMS SET FORTH ON THIS FLOOR PLAN ARE GENERALLY TAKEN AT THE GREATEST POINTS OF EACH GIVEN ROOM (AS IF THE ROOM WERE A PERFECT RECTANGLE), WITHOUT REGARD FOR ANY CUTOUTS. ACCORDINGLY, THE AREA OF THE ACTUAL ROOM WILL TYPICALLY BE SMALLER THAN THE PRODUCT OBTAINED BY MULTIPLYING THE STATED LENGTH TIMES WIDTH. ALL DIMENSIONS ARE APPROXIMATE AND MAY VARY WITH ACTUAL CONSTRUCTION, AND ALL FLOOR PLANS AND DEVELOPMENT PLANS ARE SUBJECT TO CHANGE. WITHOUT LIMITING THE FOREGOING, THE SIZE, DIMENSIONS AND LOCATIONS OF THE APPLIANCES AND SURROUNDING CABINETRY MAY BE MODIFIED, AND THE OVERALL LAYOUT OF THE KITCHEN MAY CHANGE FROM THAT WHICH IS DEPICTED HEREON.



CASSIA

THE RESIDENCES AT
CORAL GABLES

A1 B L

RESIDENCE

1 Bedroom + Den
1 Bathroom

Interior

717 SQ. SF. / 66 SQ. M²

Exterior

160 SQ. SF. / 15 SQ. M²

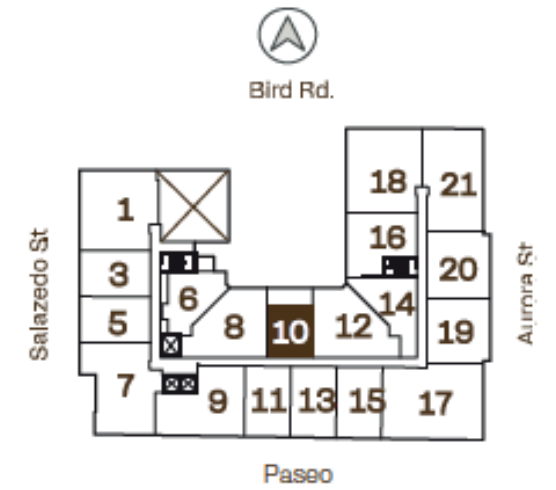
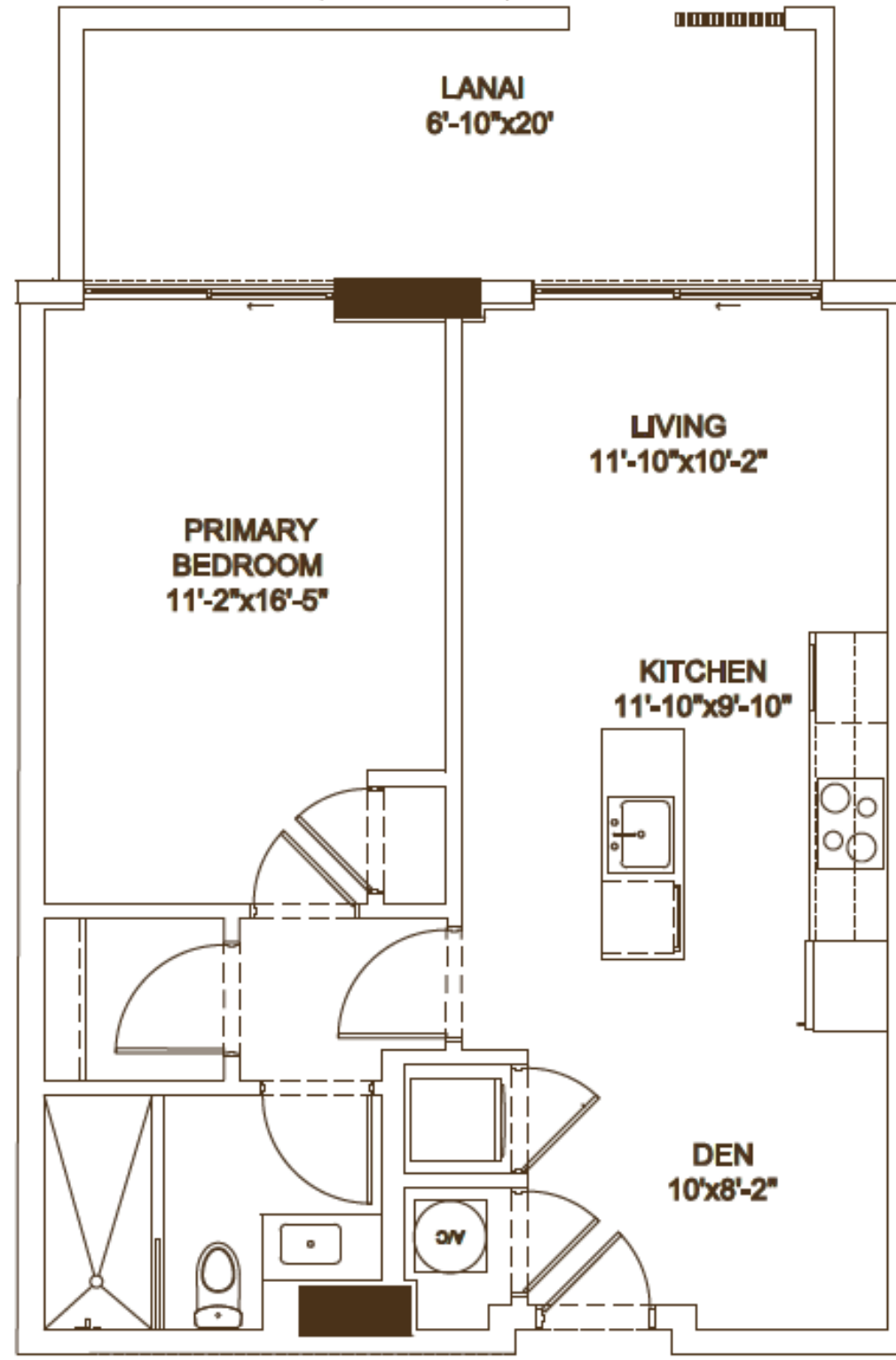
Total

877 SQ. SF. / 81 SQ. M²

Developed by



Sales & Marketing by



LINE 10
5TH FLOOR



ALL ILLUSTRATIONS ARE ARTISTIC CONCEPTUAL RENDERINGS AND ARE SUBJECT TO CHANGE WITHOUT NOTICE, ORAL REPRESENTATIONS CANNOT BE RELIED UPON AS CORRECTLY STATING REPRESENTATIONS OF THE DEVELOPER. FOR CORRECT REPRESENTATIONS, MAKE REFERENCE TO THE DOCUMENTS REQUIRED BY SECTION 718.503, FLORIDA STATUTES, TO BE FURNISHED BY A DEVELOPER TO A BUYER OR LESSEE. 4011 SALZEDO CONDOMINIUM DEVELOPED BY ALTA CORAL GABLES LLC. STATED DIMENSIONS ARE MEASURED TO THE EXTERIOR BOUNDARIES OF THE EXTERIOR WALLS AND THE CENTERLINE OF INTERIOR DEMISING WALLS AND IN FACT VARY FROM THE DIMENSIONS THAT WOULD BE DETERMINED BY USING THE DESCRIPTION AND DEFINITION OF THE "UNIT" SET FORTH IN THE DECLARATION (WHICH GENERALLY ONLY INCLUDES THE INTERIOR AIRSPACE BETWEEN THE PERIMETER WALLS AND EXCLUDES INTERIOR STRUCTURAL COMPONENTS). FOR YOUR REFERENCE, THE AREA OF THE UNIT, DETERMINED IN ACCORDANCE WITH THOSE DEFINED UNIT BOUNDARIES, IS SET FORTH ON EXHIBIT "3" TO THE DECLARATION. NOTE THAT MEASUREMENTS OF ROOMS SET FORTH ON THIS FLOOR PLAN ARE GENERALLY TAKEN AT THE GREATEST POINTS OF EACH GIVEN ROOM (AS IF THE ROOM WERE A PERFECT RECTANGLE), WITHOUT REGARD FOR ANY CUTOUTS. ACCORDINGLY, THE AREA OF THE ACTUAL ROOM WILL TYPICALLY BE SMALLER THAN THE PRODUCT OBTAINED BY MULTIPLYING THE STATED LENGTH TIMES WIDTH. ALL DIMENSIONS ARE APPROXIMATE AND MAY VARY WITH ACTUAL CONSTRUCTION, AND ALL FLOOR PLANS AND DEVELOPMENT PLANS ARE SUBJECT TO CHANGE. WITHOUT LIMITING THE FOREGOING, THE SIZE, DIMENSIONS AND LOCATIONS OF THE APPLIANCES AND SURROUNDING CABINETRY MAY BE MODIFIED, AND THE OVERALL LAYOUT OF THE KITCHEN MAY CHANGE FROM THAT WHICH IS DEPICTED HEREON.

Creative by Metrostudio.com



CASSIA
THE RESIDENCES AT
CORAL GABLES

B6.1 L ADA

RESIDENCE

2 Bedroom
2 Bathroom

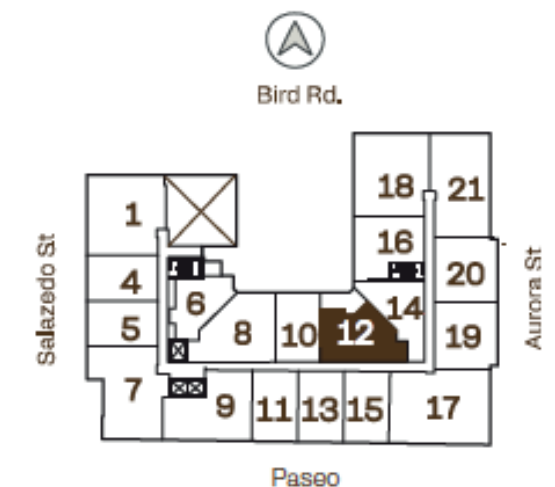
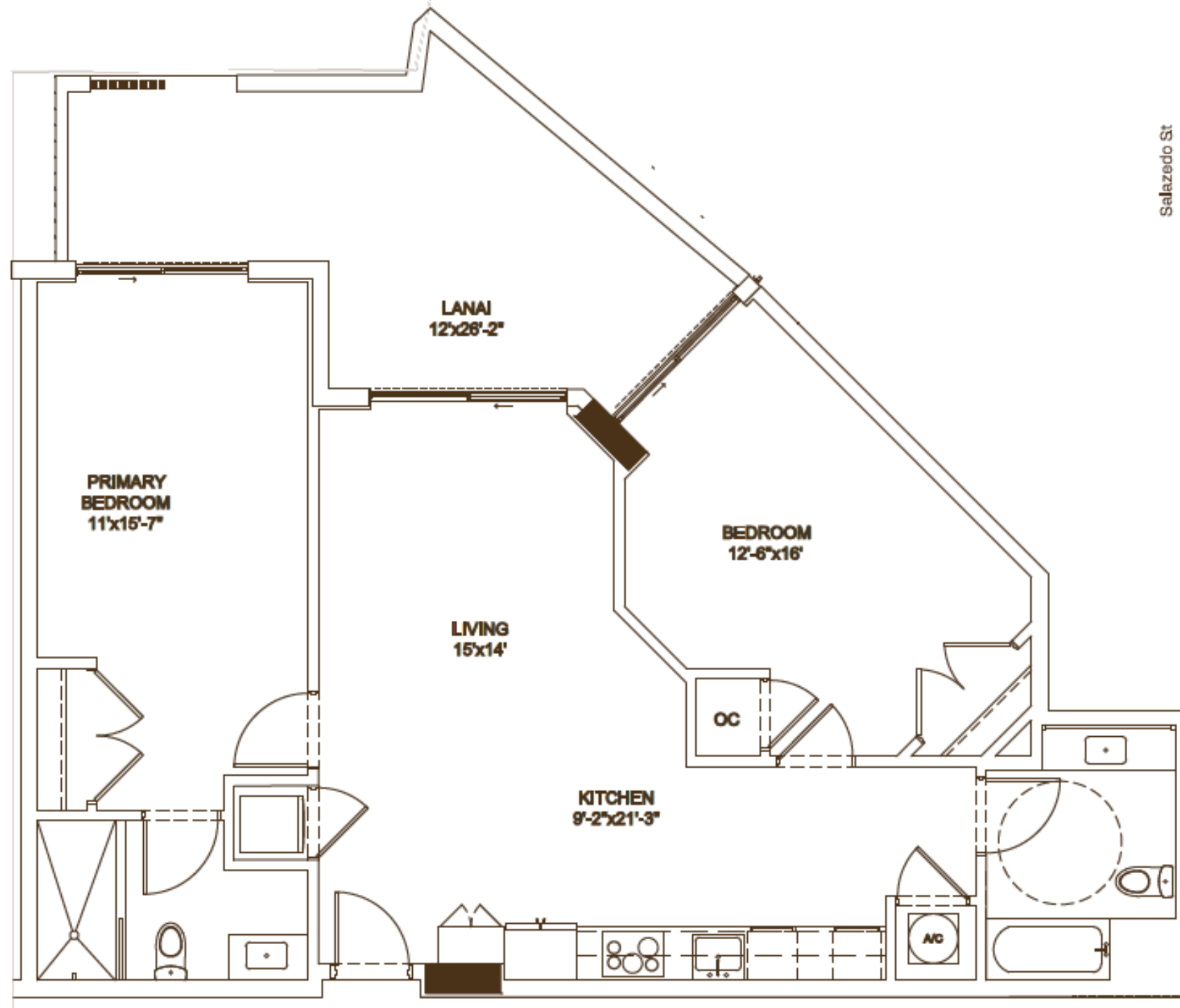
Interior
1127 SQ. SF. / 105 SQ. M²

Exterior
309 SQ. SF. / 28 SQ. M²

Total
1,436 SQ. SF. / 133 SQ. M²

Developed by

Sales & Marketing by



**ADA 2 BED
5TH FLOOR**



ALL ILLUSTRATIONS ARE ARTISTIC CONCEPTUAL RENDERINGS AND ARE SUBJECT TO CHANGE WITHOUT NOTICE, ORAL REPRESENTATIONS CANNOT BE RELIED UPON AS CORRECTLY STATING REPRESENTATIONS OF THE DEVELOPER. FOR CORRECT REPRESENTATIONS, MAKE REFERENCE TO THE DOCUMENTS REQUIRED BY SECTION 718.503, FLORIDA STATUTES, TO BE FURNISHED BY A DEVELOPER TO A BUYER OR LESSEE. 4011 SALZEDO CONDOMINIUM DEVELOPED BY ALTA CORAL GABLES LLC. STATED DIMENSIONS ARE MEASURED TO THE EXTERIOR BOUNDARIES OF THE EXTERIOR WALLS AND THE CENTERLINE OF INTERIOR DEMISING WALLS AND IN FACT VARY FROM THE DIMENSIONS THAT WOULD BE DETERMINED BY USING THE DESCRIPTION AND DEFINITION OF THE "UNIT" SET FORTH IN THE DECLARATION (WHICH GENERALLY ONLY INCLUDES THE INTERIOR AIRSPACE BETWEEN THE PERIMETER WALLS AND EXCLUDES INTERIOR STRUCTURAL COMPONENTS). FOR YOUR REFERENCE, THE AREA OF THE UNIT, DETERMINED IN ACCORDANCE WITH THOSE DEFINED UNIT BOUNDARIES, IS SET FORTH ON EXHIBIT "3" TO THE DECLARATION. NOTE THAT MEASUREMENTS OF ROOMS SET FORTH ON THIS FLOOR PLAN ARE GENERALLY TAKEN AT THE GREATEST POINTS OF EACH GIVEN ROOM (AS IF THE ROOM WERE A PERFECT RECTANGLE), WITHOUT REGARD FOR ANY CUTOUTS. ACCORDINGLY, THE AREA OF THE ACTUAL ROOM WILL TYPICALLY BE SMALLER THAN THE PRODUCT OBTAINED BY MULTIPLYING THE STATED LENGTH TIMES WIDTH. ALL DIMENSIONS ARE APPROXIMATE AND MAY VARY WITH ACTUAL CONSTRUCTION, AND ALL FLOOR PLANS AND DEVELOPMENT PLANS ARE SUBJECT TO CHANGE. WITHOUT LIMITING THE FOREGOING, THE SIZE, DIMENSIONS AND LOCATIONS OF THE APPLIANCES AND SURROUNDING CABINETRY MAY BE MODIFIED, AND THE OVERALL LAYOUT OF THE KITCHEN MAY CHANGE FROM THAT WHICH IS DEPICTED HEREON.



CASSIA

THE RESIDENCES AT
CORAL GABLES

A2 L RESIDENCE

1 Bedroom
1 Bathroom

Interior
726 SQ. SF. / 67 SQ. M²

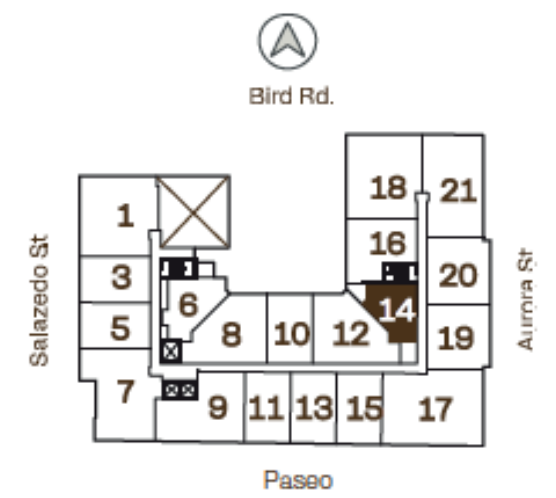
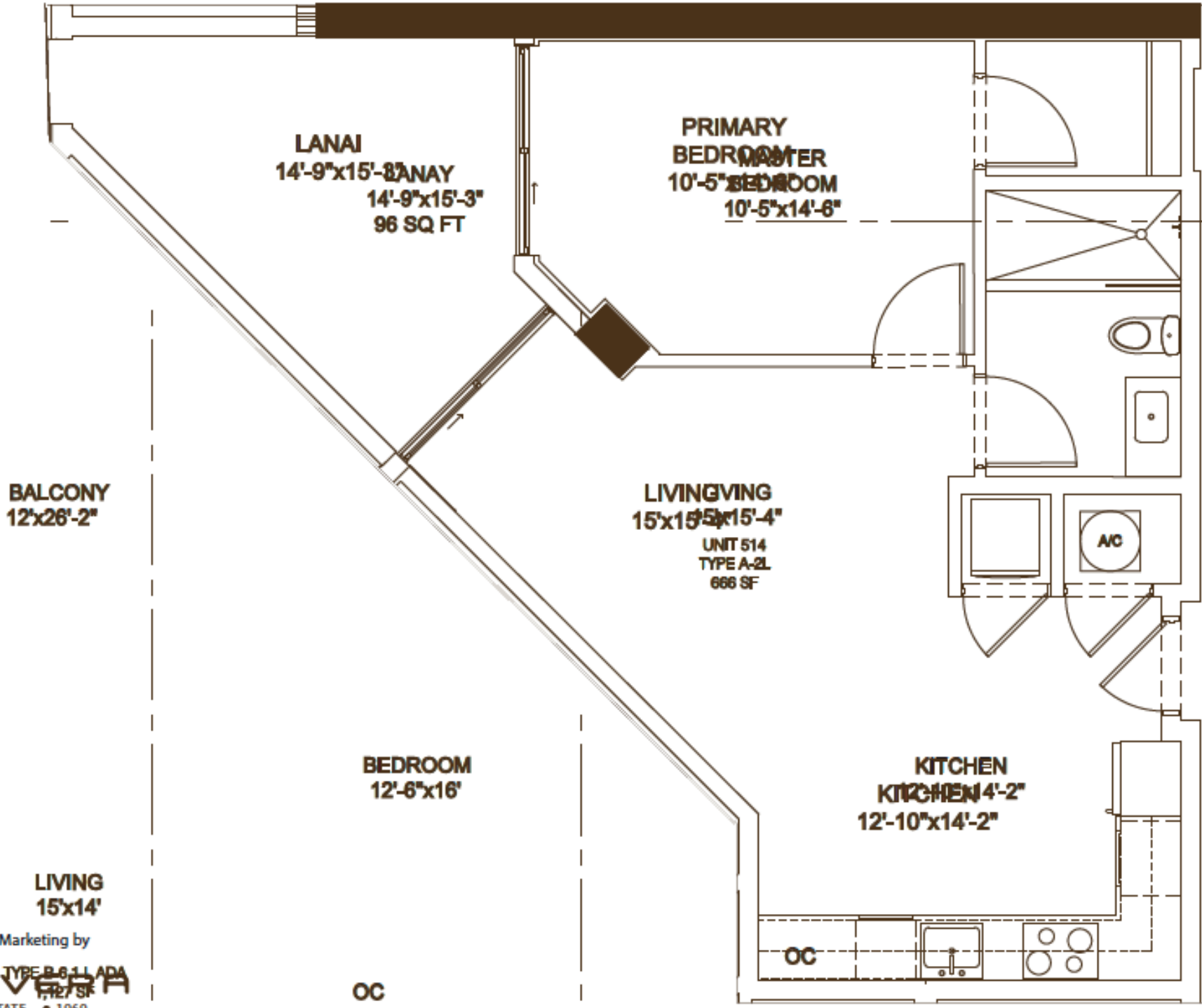
Exterior
96 SQ. SF. / 9 SQ. M²

Total
822 SQ. SF. / 76 SQ. M²

Developed by



Sales & Marketing by



**LINE 14
5TH FLOOR**



ALL ILLUSTRATIONS ARE ARTISTIC CONCEPTUAL RENDERINGS AND ARE SUBJECT TO CHANGE WITHOUT NOTICE, ORAL REPRESENTATIONS CANNOT BE RELIED UPON AS CORRECTLY STATING REPRESENTATIONS OF THE DEVELOPER. FOR CORRECT REPRESENTATIONS, MAKE REFERENCE TO THE DOCUMENTS REQUIRED BY SECTION 718.503, FLORIDA STATUTES, TO BE FURNISHED BY A DEVELOPER TO A BUYER OR LESSEE. 4011 SALZEDO CONDOMINIUM DEVELOPED BY ALTA CORAL GABLES LLC. STATED DIMENSIONS ARE MEASURED TO THE EXTERIOR BOUNDARIES OF THE EXTERIOR WALLS AND THE CENTERLINE OF INTERIOR DEMISING WALLS AND IN FACT VARY FROM THE DIMENSIONS THAT WOULD BE DETERMINED BY USING THE DESCRIPTION AND DEFINITION OF THE "UNIT" SET FORTH IN THE DECLARATION (WHICH GENERALLY ONLY INCLUDES THE INTERIOR AIRSPACE BETWEEN THE PERIMETER WALLS AND EXCLUDES INTERIOR STRUCTURAL COMPONENTS). FOR YOUR REFERENCE, THE AREA OF THE UNIT, DETERMINED IN ACCORDANCE WITH THOSE DEFINED UNIT BOUNDARIES, IS SET FORTH ON EXHIBIT "3" TO THE DECLARATION. NOTE THAT MEASUREMENTS OF ROOMS SET FORTH ON THIS FLOOR PLAN ARE GENERALLY TAKEN AT THE GREATEST POINTS OF EACH GIVEN ROOM (AS IF THE ROOM WERE A PERFECT RECTANGLE), WITHOUT REGARD FOR ANY CUTOUTS. ACCORDINGLY, THE AREA OF THE ACTUAL ROOM WILL TYPICALLY BE SMALLER THAN THE PRODUCT OBTAINED BY MULTIPLYING THE STATED LENGTH TIMES WIDTH. ALL DIMENSIONS ARE APPROXIMATE AND MAY VARY WITH ACTUAL CONSTRUCTION, AND ALL FLOOR PLANS AND DEVELOPMENT PLANS ARE SUBJECT TO CHANGE. WITHOUT LIMITING THE FOREGOING, THE SIZE, DIMENSIONS AND LOCATIONS OF THE APPLIANCES AND SURROUNDING CABINETRY MAY BE MODIFIED, AND THE OVERALL LAYOUT OF THE KITCHEN MAY CHANGE FROM THAT WHICH IS DEPICTED HEREON.



CASSIA

THE RESIDENCES AT
CORAL GABLES

A3 L RESIDENCE

1 Bedroom + Den
1 Bathroom

Interior

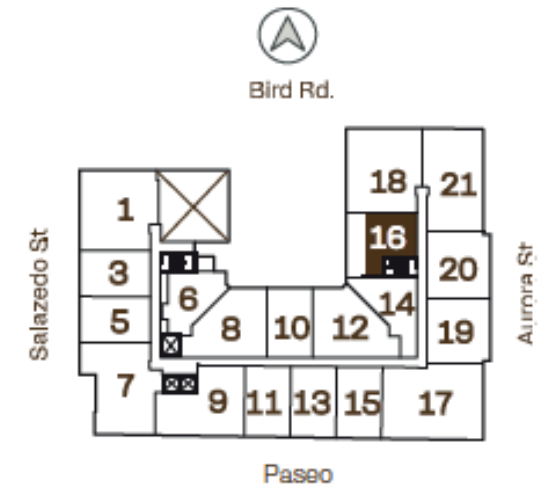
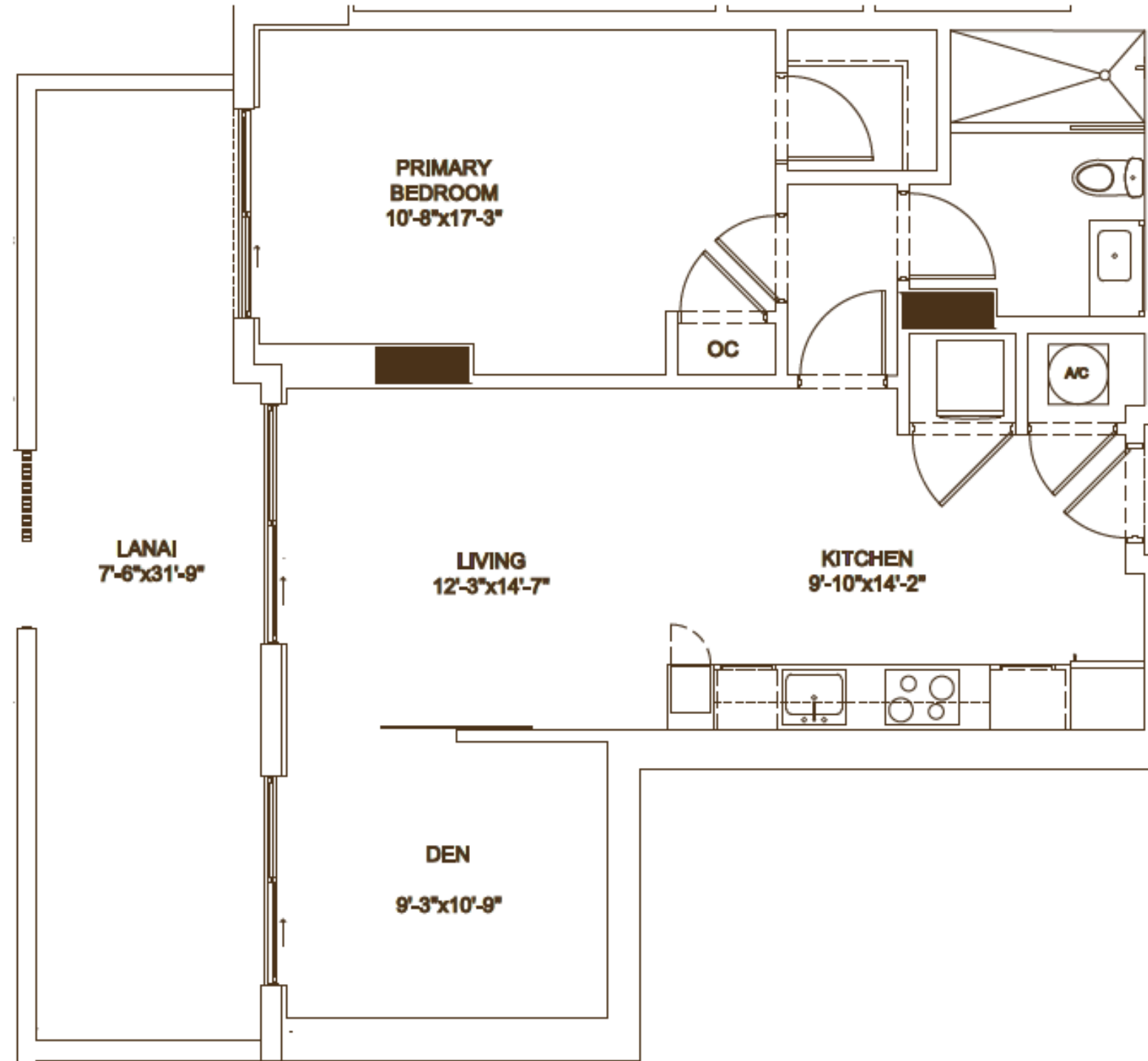
865 SQ. SF. / 80 SQ. M²

Exterior

229 SQ. SF. / 21 SQ. M²

Total

1,094 SQ. SF. / 101 SQ. M²



LINE 16 5TH FLOOR

Developed by



Sales & Marketing by



ALL ILLUSTRATIONS ARE ARTISTIC CONCEPTUAL RENDERINGS AND ARE SUBJECT TO CHANGE WITHOUT NOTICE, ORAL REPRESENTATIONS CANNOT BE RELIED UPON AS CORRECTLY STATING REPRESENTATIONS OF THE DEVELOPER. FOR CORRECT REPRESENTATIONS, MAKE REFERENCE TO THE DOCUMENTS REQUIRED BY SECTION 718.503, FLORIDA STATUTES, TO BE FURNISHED BY A DEVELOPER TO A BUYER OR LESSEE. 4011 SALZEDO CONDOMINIUM DEVELOPED BY ALTA CORAL GABLES LLC. STATED DIMENSIONS ARE MEASURED TO THE EXTERIOR BOUNDARIES OF THE EXTERIOR WALLS AND THE CENTERLINE OF INTERIOR DEMISING WALLS AND IN FACT VARY FROM THE DIMENSIONS THAT WOULD BE DETERMINED BY USING THE DESCRIPTION AND DEFINITION OF THE "UNIT" SET FORTH IN THE DECLARATION (WHICH GENERALLY ONLY INCLUDES THE INTERIOR AIRSPACE BETWEEN THE PERIMETER WALLS AND EXCLUDES INTERIOR STRUCTURAL COMPONENTS). FOR YOUR REFERENCE, THE AREA OF THE UNIT, DETERMINED IN ACCORDANCE WITH THOSE DEFINED UNIT BOUNDARIES, IS SET FORTH ON EXHIBIT "3" TO THE DECLARATION. NOTE THAT MEASUREMENTS OF ROOMS SET FORTH ON THIS FLOOR PLAN ARE GENERALLY TAKEN AT THE GREATEST POINTS OF EACH GIVEN ROOM (AS IF THE ROOM WERE A PERFECT RECTANGLE), WITHOUT REGARD FOR ANY CUTOUTS. ACCORDINGLY, THE AREA OF THE ACTUAL ROOM WILL TYPICALLY BE SMALLER THAN THE PRODUCT OBTAINED BY MULTIPLYING THE STATED LENGTH TIMES WIDTH. ALL DIMENSIONS ARE APPROXIMATE AND MAY VARY WITH ACTUAL CONSTRUCTION, AND ALL FLOOR PLANS AND DEVELOPMENT PLANS ARE SUBJECT TO CHANGE. WITHOUT LIMITING THE FOREGOING, THE SIZE, DIMENSIONS AND LOCATIONS OF THE APPLIANCES AND SURROUNDING CABINETRY MAY BE MODIFIED, AND THE OVERALL LAYOUT OF THE KITCHEN MAY CHANGE FROM THAT WHICH IS DEPICTED HEREON.

Creative by Metrostudio.com



CASSIA
THE RESIDENCES AT
CORAL GABLES

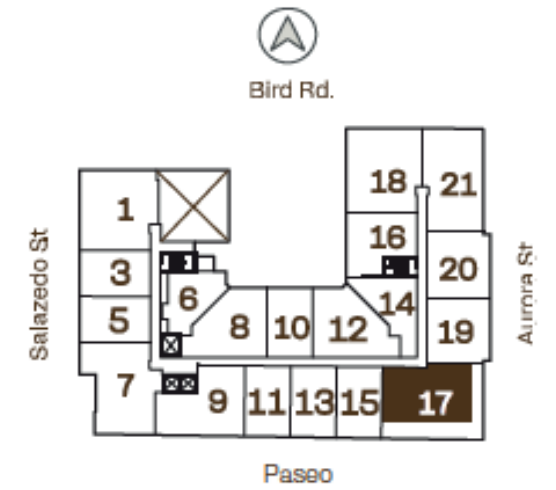
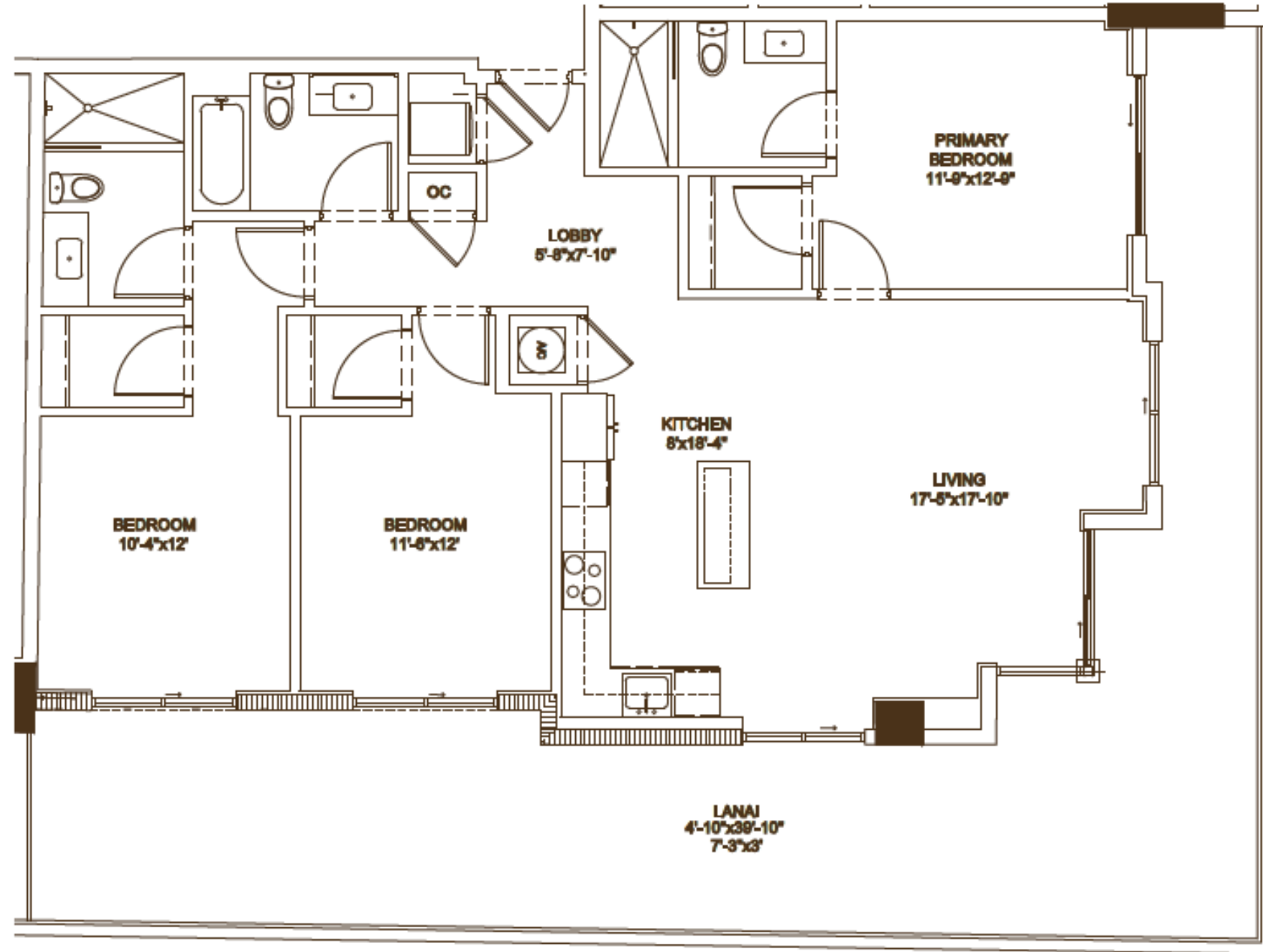
C2 L RESIDENCE

3 Bedroom
3 Bathroom

Interior
1,439 SQ. SF. / 133 SQ. M²

Exterior
214 SQ. SF. / 20 SQ. M²

Total
1,653 SQ. SF. / 135 SQ. M²



**LINE 17
5TH FLOOR**



Developed by **ALTA DEVELOPERS**
Sales & Marketing by **CERVERA REAL ESTATE • 1969**

ALL ILLUSTRATIONS ARE ARTISTIC CONCEPTUAL RENDERINGS AND ARE SUBJECT TO CHANGE WITHOUT NOTICE, ORAL REPRESENTATIONS CANNOT BE RELIED UPON AS CORRECTLY STATING REPRESENTATIONS OF THE DEVELOPER. FOR CORRECT REPRESENTATIONS, MAKE REFERENCE TO THE DOCUMENTS REQUIRED BY SECTION 718.503, FLORIDA STATUTES, TO BE FURNISHED BY A DEVELOPER TO A BUYER OR LESSEE. 4011 SALZEDO CONDOMINIUM DEVELOPED BY ALTA CORAL GABLES LLC. STATED DIMENSIONS ARE MEASURED TO THE EXTERIOR BOUNDARIES OF THE EXTERIOR WALLS AND THE CENTERLINE OF INTERIOR DEMISING WALLS AND IN FACT VARY FROM THE DIMENSIONS THAT WOULD BE DETERMINED BY USING THE DESCRIPTION AND DEFINITION OF THE "UNIT" SET FORTH IN THE DECLARATION (WHICH GENERALLY ONLY INCLUDES THE INTERIOR AIRSPACE BETWEEN THE PERIMETER WALLS AND EXCLUDES INTERIOR STRUCTURAL COMPONENTS). FOR YOUR REFERENCE, THE AREA OF THE UNIT, DETERMINED IN ACCORDANCE WITH THOSE DEFINED UNIT BOUNDARIES, IS SET FORTH ON EXHIBIT "3" TO THE DECLARATION. NOTE THAT MEASUREMENTS OF ROOMS SET FORTH ON THIS FLOOR PLAN ARE GENERALLY TAKEN AT THE GREATEST POINTS OF EACH GIVEN ROOM (AS IF THE ROOM WERE A PERFECT RECTANGLE), WITHOUT REGARD FOR ANY CUTOUTS. ACCORDINGLY, THE AREA OF THE ACTUAL ROOM WILL TYPICALLY BE SMALLER THAN THE PRODUCT OBTAINED BY MULTIPLYING THE STATED LENGTH TIMES WIDTH. ALL DIMENSIONS ARE APPROXIMATE AND MAY VARY WITH ACTUAL CONSTRUCTION, AND ALL FLOOR PLANS AND DEVELOPMENT PLANS ARE SUBJECT TO CHANGE. WITHOUT LIMITING THE FOREGOING, THE SIZE, DIMENSIONS AND LOCATIONS OF THE APPLIANCES AND SURROUNDING CABINETRY MAY BE MODIFIED, AND THE OVERALL LAYOUT OF THE KITCHEN MAY CHANGE FROM THAT WHICH IS DEPICTED HEREON.



CASSIA

THE RESIDENCES AT
CORAL GABLES

B4.1L

RESIDENCE

2 Bedroom
2 Bathroom

Interior

1,141 SQ. SF. / 106 SQ. M²

Exterior

660 SQ. SF. / 61 SQ. M²

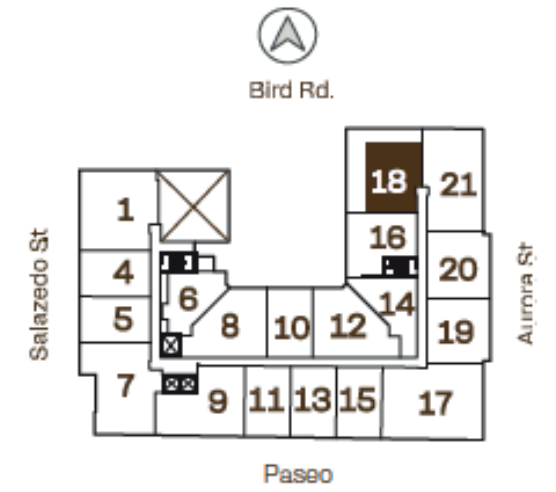
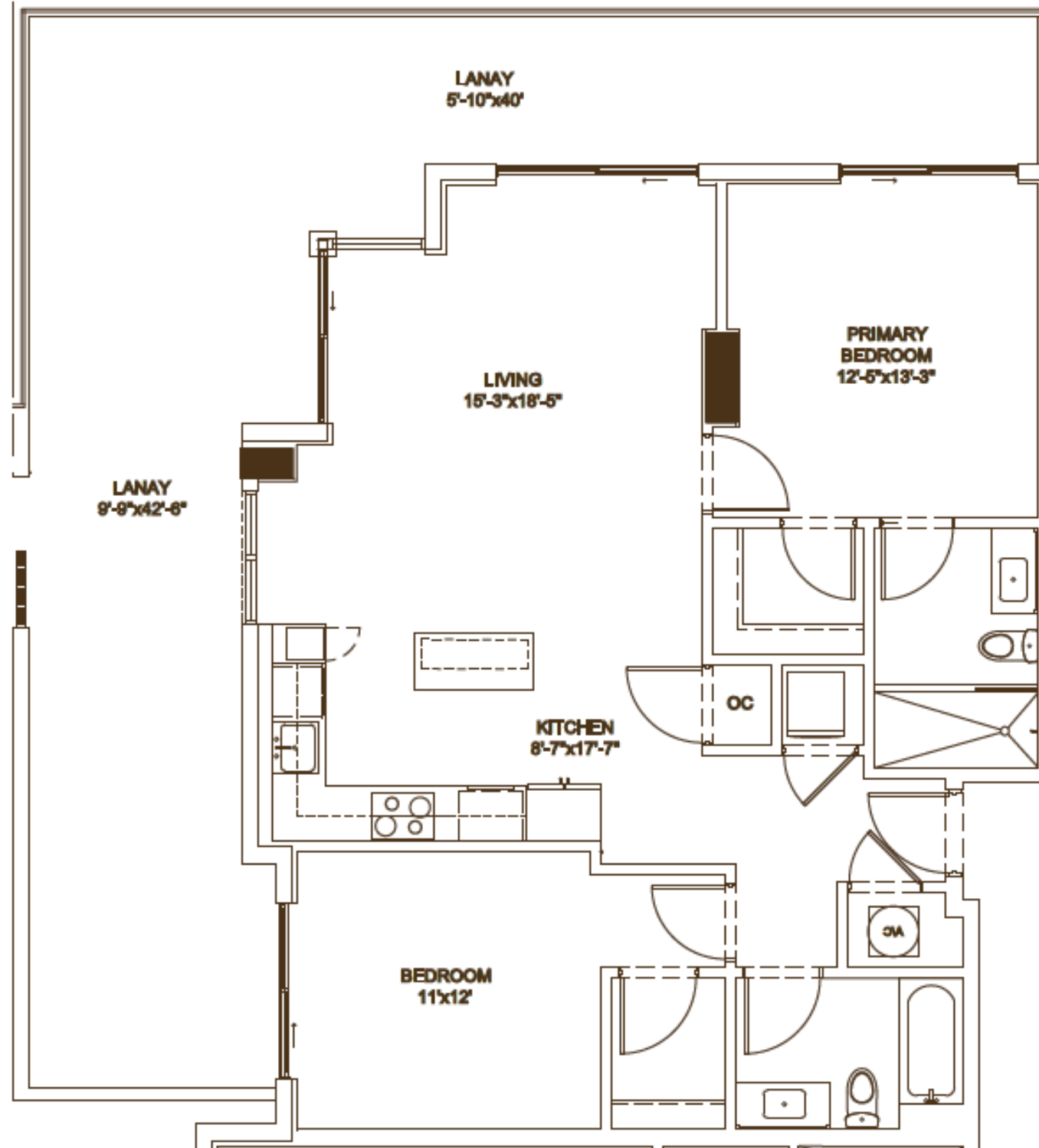
Total

1,801 SQ. SF. / 167 SQ. M²

Developed by



Sales & Marketing by



LINE 18 5TH FLOOR



ALL ILLUSTRATIONS ARE ARTISTIC CONCEPTUAL RENDERINGS AND ARE SUBJECT TO CHANGE WITHOUT NOTICE, ORAL REPRESENTATIONS CANNOT BE RELIED UPON AS CORRECTLY STATING REPRESENTATIONS OF THE DEVELOPER. FOR CORRECT REPRESENTATIONS, MAKE REFERENCE TO THE DOCUMENTS REQUIRED BY SECTION 718.503, FLORIDA STATUTES, TO BE FURNISHED BY A DEVELOPER TO A BUYER OR LESSEE. 4011 SALZEDO CONDOMINIUM DEVELOPED BY ALTA CORAL GABLES LLC. STATED DIMENSIONS ARE MEASURED TO THE EXTERIOR BOUNDARIES OF THE EXTERIOR WALLS AND THE CENTERLINE OF INTERIOR DEMISING WALLS AND IN FACT VARY FROM THE DIMENSIONS THAT WOULD BE DETERMINED BY USING THE DESCRIPTION AND DEFINITION OF THE "UNIT" SET FORTH IN THE DECLARATION (WHICH GENERALLY ONLY INCLUDES THE INTERIOR AIRSPACE BETWEEN THE PERIMETER WALLS AND EXCLUDES INTERIOR STRUCTURAL COMPONENTS). FOR YOUR REFERENCE, THE AREA OF THE UNIT, DETERMINED IN ACCORDANCE WITH THOSE DEFINED UNIT BOUNDARIES, IS SET FORTH ON EXHIBIT "3" TO THE DECLARATION. NOTE THAT MEASUREMENTS OF ROOMS SET FORTH ON THIS FLOOR PLAN ARE GENERALLY TAKEN AT THE GREATEST POINTS OF EACH GIVEN ROOM (AS IF THE ROOM WERE A PERFECT RECTANGLE), WITHOUT REGARD FOR ANY CUTOUTS. ACCORDINGLY, THE AREA OF THE ACTUAL ROOM WILL TYPICALLY BE SMALLER THAN THE PRODUCT OBTAINED BY MULTIPLYING THE STATED LENGTH TIMES WIDTH. ALL DIMENSIONS ARE APPROXIMATE AND MAY VARY WITH ACTUAL CONSTRUCTION, AND ALL FLOOR PLANS AND DEVELOPMENT PLANS ARE SUBJECT TO CHANGE. WITHOUT LIMITING THE FOREGOING, THE SIZE, DIMENSIONS AND LOCATIONS OF THE APPLIANCES AND SURROUNDING CABINETRY MAY BE MODIFIED, AND THE OVERALL LAYOUT OF THE KITCHEN MAY CHANGE FROM THAT WHICH IS DEPICTED HEREON.

Creative by Metrostudio.com



CASSIA

THE RESIDENCES AT
CORAL GABLES

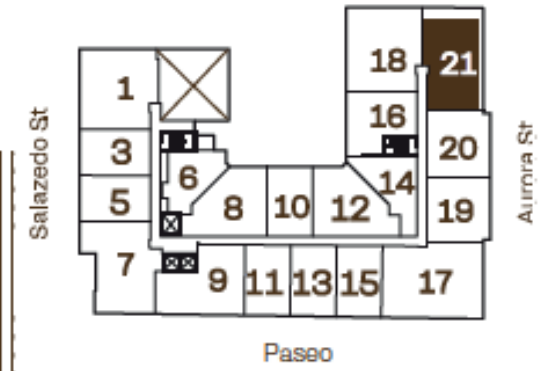
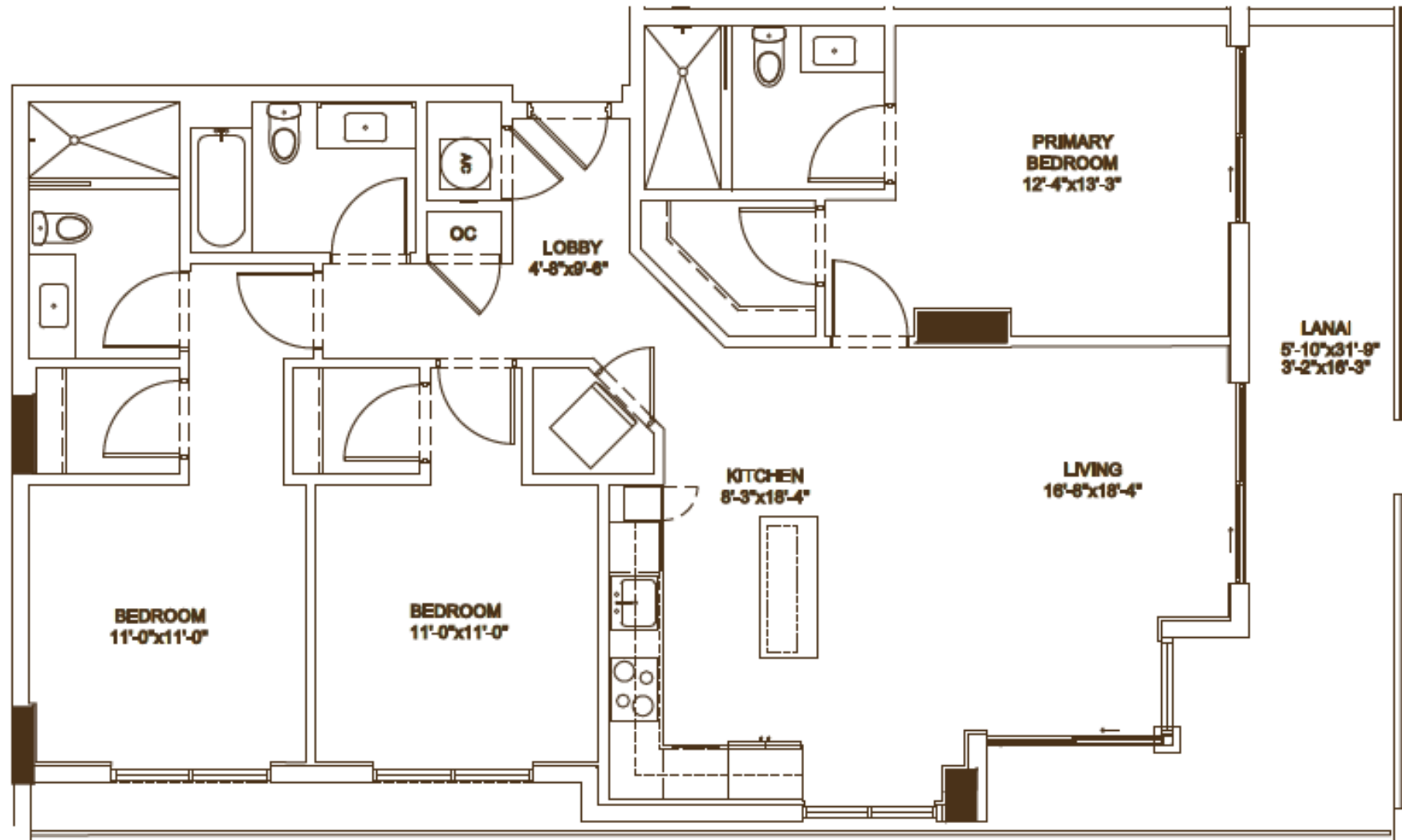
C1L RESIDENCE

3 Bedroom
3 Bathroom

Interior
1,426 SQ. SF. / 132 SQ. M²

Exterior
260 SQ. SF. / 24 SQ. M²

Total
1,686 SQ. SF. / 156 SQ. M²



LINE 21 5TH FLOOR



Developed by **ALTA DEVELOPERS** Sales & Marketing by **CERVERA REAL ESTATE • 1969**

ALL ILLUSTRATIONS ARE ARTISTIC CONCEPTUAL RENDERINGS AND ARE SUBJECT TO CHANGE WITHOUT NOTICE, ORAL REPRESENTATIONS CANNOT BE RELIED UPON AS CORRECTLY STATTING REPRESENTATIONS OF THE DEVELOPER. FOR CORRECT REPRESENTATIONS, MAKE REFERENCE TO THE DOCUMENTS REQUIRED BY SECTION 718.503, FLORIDA STATUTES, TO BE FURNISHED BY A DEVELOPER TO A BUYER OR LESSEE. 4011 SALZEDO CONDOMINIUM DEVELOPED BY ALTA CORAL GABLES LLC. STATED DIMENSIONS ARE MEASURED TO THE EXTERIOR BOUNDARIES OF THE EXTERIOR WALLS AND THE CENTERLINE OF INTERIOR DEMISING WALLS AND IN FACT VARY FROM THE DIMENSIONS THAT WOULD BE DETERMINED BY USING THE DESCRIPTION AND DEFINITION OF THE "UNIT" SET FORTH IN THE DECLARATION (WHICH GENERALLY ONLY INCLUDES THE INTERIOR AIRSPACE BETWEEN THE PERIMETER WALLS AND EXCLUDES INTERIOR STRUCTURAL COMPONENTS). FOR YOUR REFERENCE, THE AREA OF THE UNIT, DETERMINED IN ACCORDANCE WITH THOSE DEFINED UNIT BOUNDARIES, IS SET FORTH ON EXHIBIT "3" TO THE DECLARATION. NOTE THAT MEASUREMENTS OF ROOMS SET FORTH ON THIS FLOOR PLAN ARE GENERALLY TAKEN AT THE GREATEST POINTS OF EACH GIVEN ROOM (AS IF THE ROOM WERE A PERFECT RECTANGLE), WITHOUT REGARD FOR ANY CUTOUTS. ACCORDINGLY, THE AREA OF THE ACTUAL ROOM WILL TYPICALLY BE SMALLER THAN THE PRODUCT OBTAINED BY MULTIPLYING THE STATED LENGTH TIMES WIDTH. ALL DIMENSIONS ARE APPROXIMATE AND MAY VARY WITH ACTUAL CONSTRUCTION, AND ALL FLOOR PLANS AND DEVELOPMENT PLANS ARE SUBJECT TO CHANGE. WITHOUT LIMITING THE FOREGOING, THE SIZE, DIMENSIONS AND LOCATIONS OF THE APPLIANCES AND SURROUNDING CABINETRY MAY BE MODIFIED, AND THE OVERALL LAYOUT OF THE KITCHEN MAY CHANGE FROM THAT WHICH IS DEPICTED HEREON.



CASSIA

THE RESIDENCES AT
CORAL GABLES

B2

RESIDENCE

2 Bedroom
2 Bathroom

Interior

1,065 SQ. SF. / 99 SQ. M²

Exterior

122 SQ. SF. / 11 SQ.²M

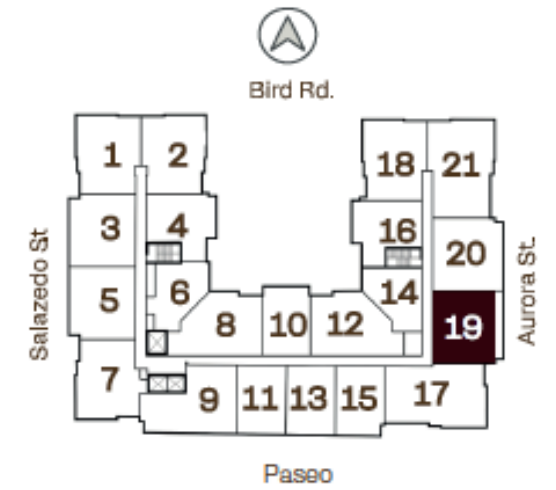
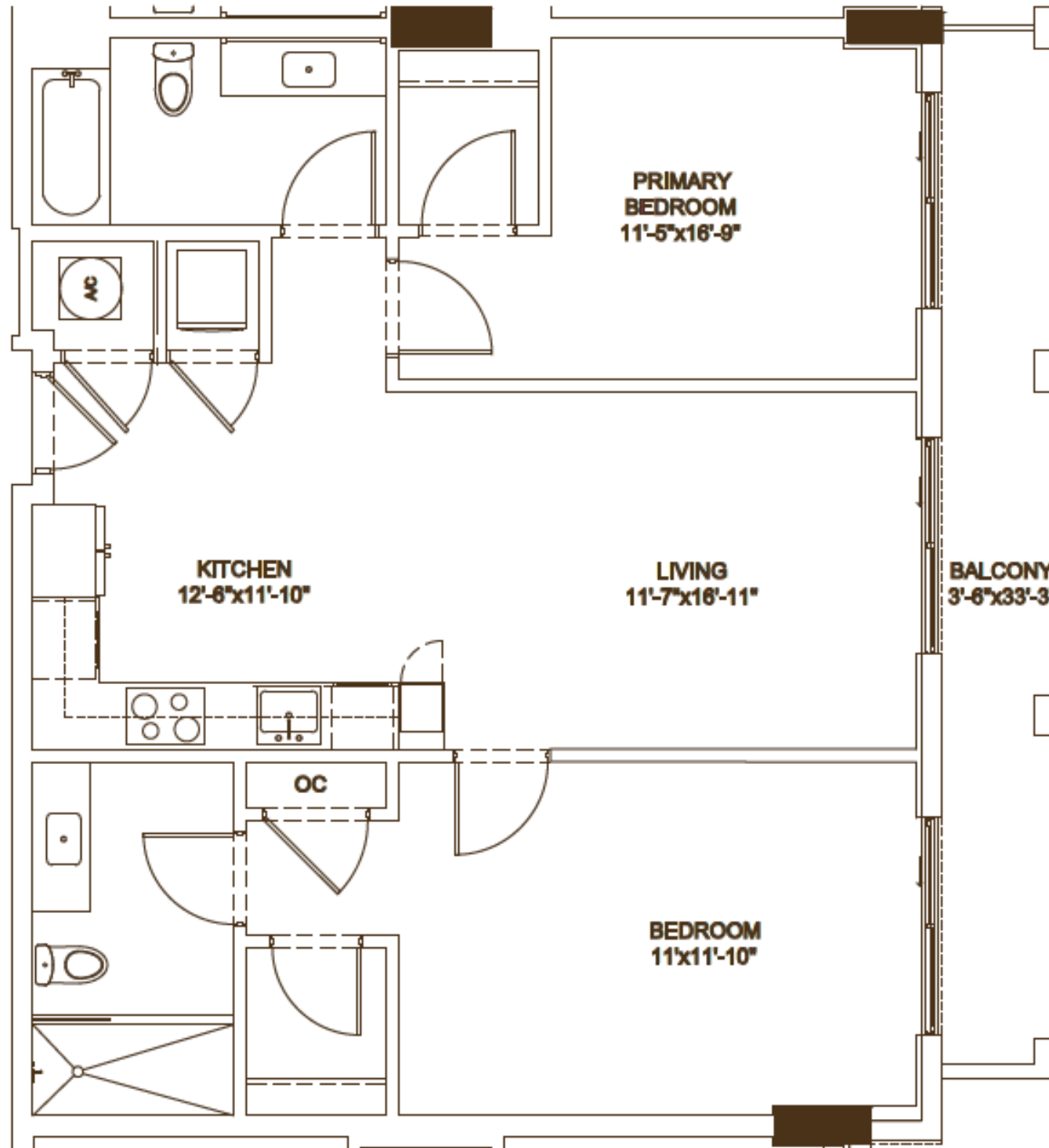
Total

1,203 SQ. SF. / 110 SQ. M²

Developed by



Sales & Marketing by



LINE 19 FLOORS 5-12



ALL ILLUSTRATIONS ARE ARTISTIC CONCEPTUAL RENDERINGS AND ARE SUBJECT TO CHANGE WITHOUT NOTICE, ORAL REPRESENTATIONS CANNOT BE RELIED UPON AS CORRECTLY STATING REPRESENTATIONS OF THE DEVELOPER. FOR CORRECT REPRESENTATIONS, MAKE REFERENCE TO THE DOCUMENTS REQUIRED BY SECTION 718.503, FLORIDA STATUTES, TO BE FURNISHED BY A DEVELOPER TO A BUYER OR LESSEE. 4011 SALZEDO CONDOMINIUM DEVELOPED BY ALTA CORAL GABLES LLC. STATED DIMENSIONS ARE MEASURED TO THE EXTERIOR BOUNDARIES OF THE EXTERIOR WALLS AND THE CENTERLINE OF INTERIOR DEMISING WALLS AND IN FACT VARY FROM THE DIMENSIONS THAT WOULD BE DETERMINED BY USING THE DESCRIPTION AND DEFINITION OF THE "UNIT" SET FORTH IN THE DECLARATION (WHICH GENERALLY ONLY INCLUDES THE INTERIOR AIRSPACE BETWEEN THE PERIMETER WALLS AND EXCLUDES INTERIOR STRUCTURAL COMPONENTS). FOR YOUR REFERENCE, THE AREA OF THE UNIT, DETERMINED IN ACCORDANCE WITH THOSE DEFINED UNIT BOUNDARIES, IS SET FORTH ON EXHIBIT "3" TO THE DECLARATION. NOTE THAT MEASUREMENTS OF ROOMS SET FORTH ON THIS FLOOR PLAN ARE GENERALLY TAKEN AT THE GREATEST POINTS OF EACH GIVEN ROOM (AS IF THE ROOM WERE A PERFECT RECTANGLE), WITHOUT REGARD FOR ANY CUTOUTS. ACCORDINGLY, THE AREA OF THE ACTUAL ROOM WILL TYPICALLY BE SMALLER THAN THE PRODUCT OBTAINED BY MULTIPLYING THE STATED LENGTH TIMES WIDTH. ALL DIMENSIONS ARE APPROXIMATE AND MAY VARY WITH ACTUAL CONSTRUCTION, AND ALL FLOOR PLANS AND DEVELOPMENT PLANS ARE SUBJECT TO CHANGE. WITHOUT LIMITING THE FOREGOING, THE SIZE, DIMENSIONS AND LOCATIONS OF THE APPLIANCES AND SURROUNDING CABINETRY MAY BE MODIFIED, AND THE OVERALL LAYOUT OF THE KITCHEN MAY CHANGE FROM THAT WHICH IS DEPICTED HEREON.



CASSIA
THE RESIDENCES AT
CORAL GABLES

B2 R RESIDENCE

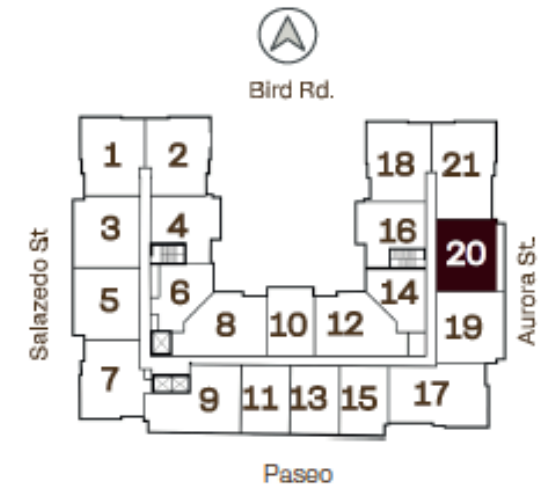
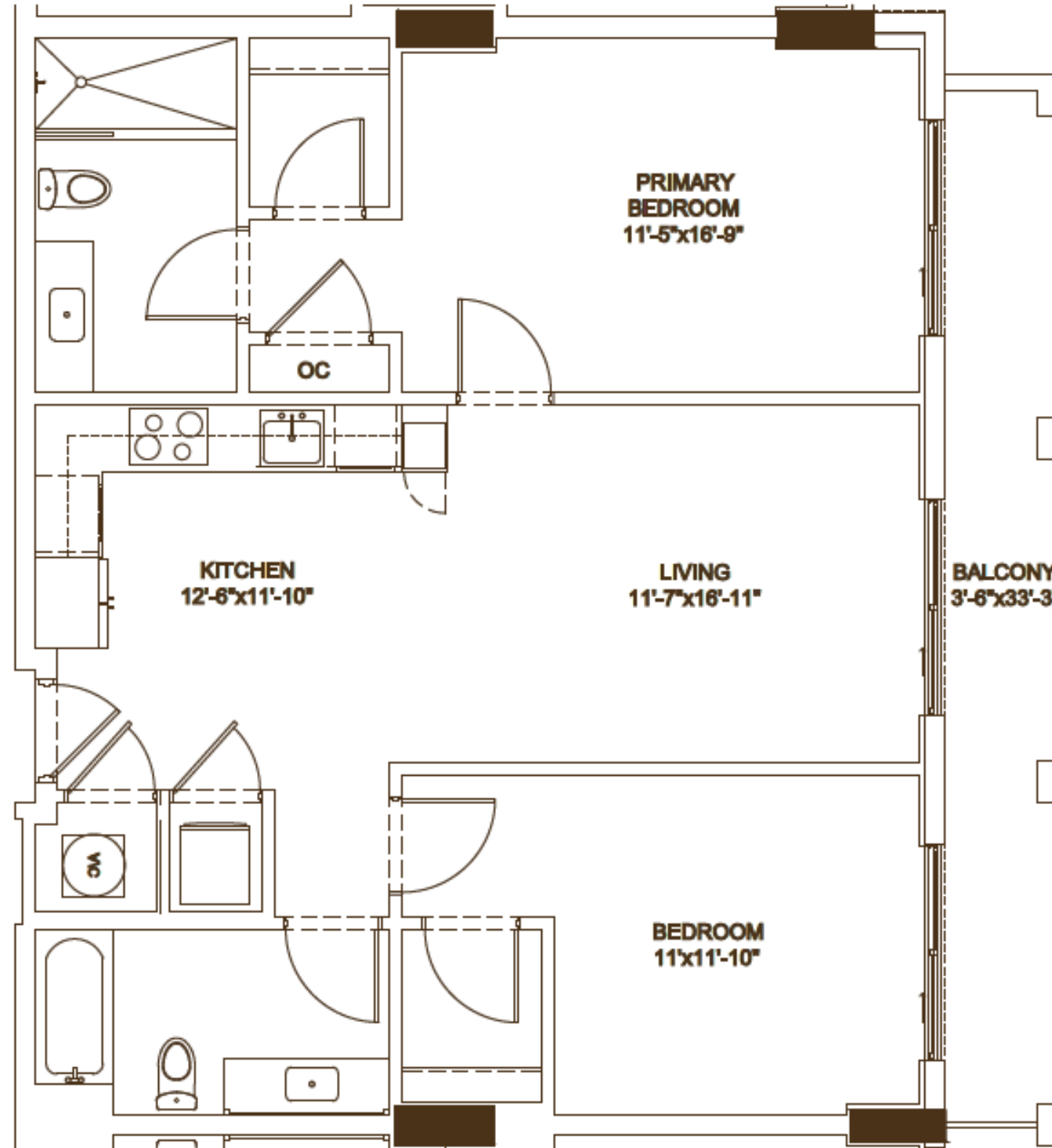
2 Bedroom
2 Bathroom

Interior
1,065 SQ. SF. / 99 SQ. M²

Exterior
122 SQ. SF. / 11 SQ. M²

Total
1,203 SQ. SF. / 110 SQ. M²

Developed by **ALTA** DEVELOPERS
Sales & Marketing by **CERVERA** REAL ESTATE • 1969



**LINE 20
FLOORS 5-12**



ALL ILLUSTRATIONS ARE ARTISTIC CONCEPTUAL RENDERINGS AND ARE SUBJECT TO CHANGE WITHOUT NOTICE, ORAL REPRESENTATIONS CANNOT BE RELIED UPON AS CORRECTLY STATING REPRESENTATIONS OF THE DEVELOPER. FOR CORRECT REPRESENTATIONS, MAKE REFERENCE TO THE DOCUMENTS REQUIRED BY SECTION 718.503, FLORIDA STATUTES, TO BE FURNISHED BY A DEVELOPER TO A BUYER OR LESSEE. 4011 SALZEDO CONDOMINIUM DEVELOPED BY ALTA CORAL GABLES LLC. STATED DIMENSIONS ARE MEASURED TO THE EXTERIOR BOUNDARIES OF THE EXTERIOR WALLS AND THE CENTERLINE OF INTERIOR DEMISING WALLS AND IN FACT VARY FROM THE DIMENSIONS THAT WOULD BE DETERMINED BY USING THE DESCRIPTION AND DEFINITION OF THE "UNIT" SET FORTH IN THE DECLARATION (WHICH GENERALLY ONLY INCLUDES THE INTERIOR AIRSPACE BETWEEN THE PERIMETER WALLS AND EXCLUDES INTERIOR STRUCTURAL COMPONENTS). FOR YOUR REFERENCE, THE AREA OF THE UNIT, DETERMINED IN ACCORDANCE WITH THOSE DEFINED UNIT BOUNDARIES, IS SET FORTH ON EXHIBIT "3" TO THE DECLARATION. NOTE THAT MEASUREMENTS OF ROOMS SET FORTH ON THIS FLOOR PLAN ARE GENERALLY TAKEN AT THE GREATEST POINTS OF EACH GIVEN ROOM (AS IF THE ROOM WERE A PERFECT RECTANGLE), WITHOUT REGARD FOR ANY CUTOUTS. ACCORDINGLY, THE AREA OF THE ACTUAL ROOM WILL TYPICALLY BE SMALLER THAN THE PRODUCT OBTAINED BY MULTIPLYING THE STATED LENGTH TIMES WIDTH. ALL DIMENSIONS ARE APPROXIMATE AND MAY VARY WITH ACTUAL CONSTRUCTION, AND ALL FLOOR PLANS AND DEVELOPMENT PLANS ARE SUBJECT TO CHANGE. WITHOUT LIMITING THE FOREGOING, THE SIZE, DIMENSIONS AND LOCATIONS OF THE APPLIANCES AND SURROUNDING CABINETRY MAY BE MODIFIED, AND THE OVERALL LAYOUT OF THE KITCHEN MAY CHANGE FROM THAT WHICH IS DEPICTED HEREON.



CASSIA

THE RESIDENCES AT
CORAL GABLES

B 6 ADA

RESIDENCE

2 Bedrooms
2 Bathrooms

Interior

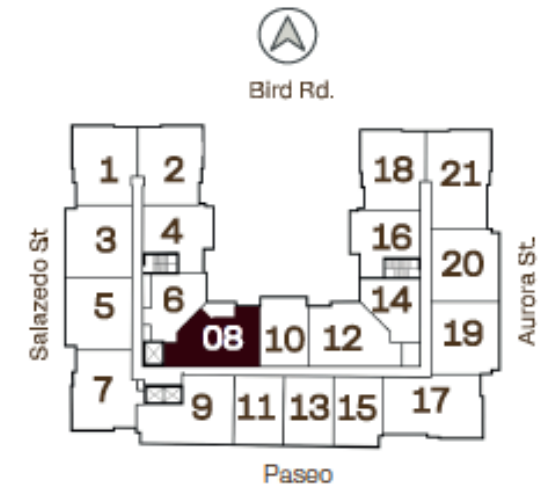
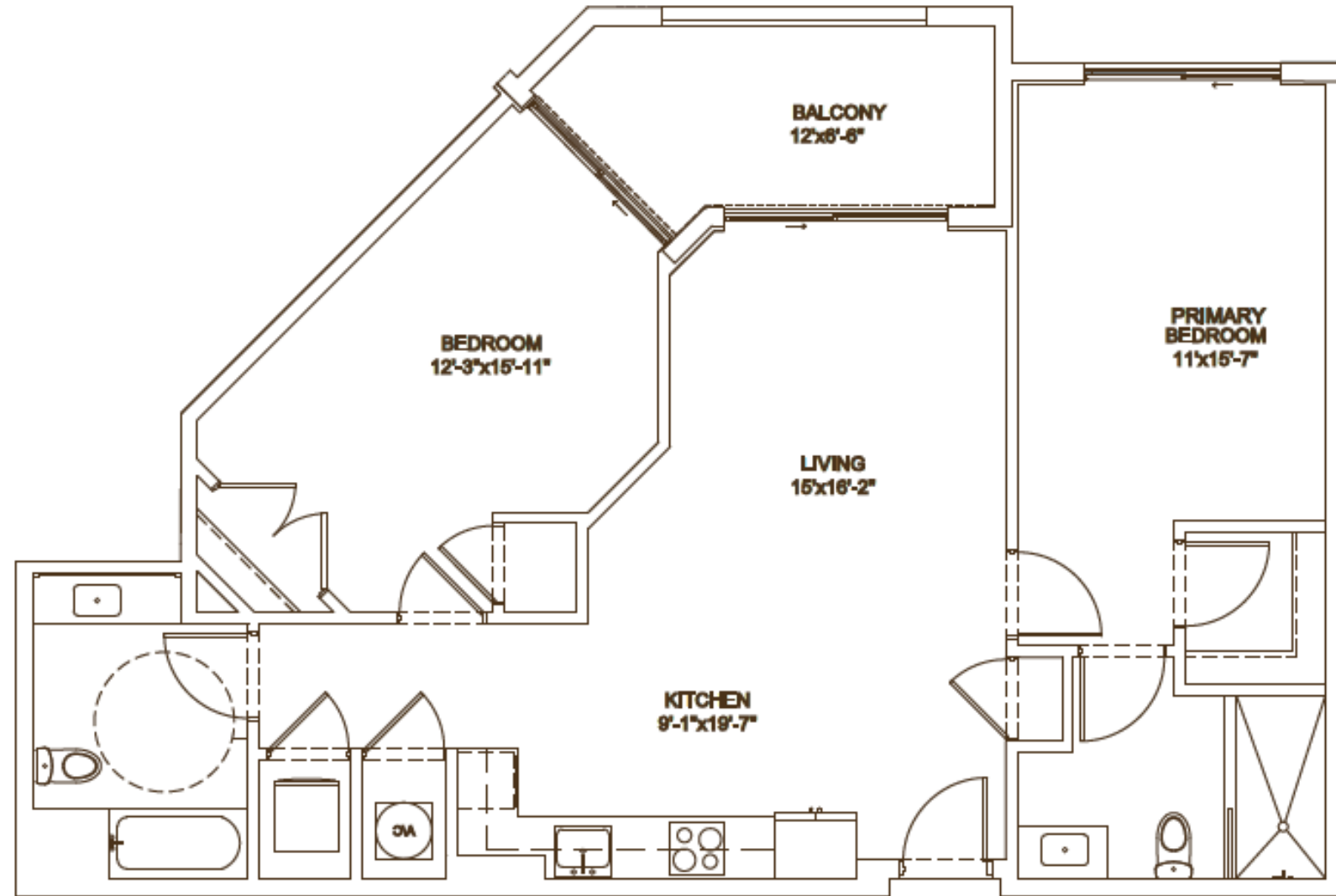
1,127 SQ. SF. / 105 SQ. M²

Exterior

107 SQ. SF. / 10 SQ. M²

Total

1,234 SQ. SF. / 115 SQ. M²



LINE 08
6TH FLOOR



Developed by



Sales & Marketing by



ALL ILLUSTRATIONS ARE ARTISTIC CONCEPTUAL RENDERINGS AND ARE SUBJECT TO CHANGE WITHOUT NOTICE, ORAL REPRESENTATIONS CANNOT BE RELIED UPON AS CORRECTLY STATING REPRESENTATIONS OF THE DEVELOPER. FOR CORRECT REPRESENTATIONS, MAKE REFERENCE TO THE DOCUMENTS REQUIRED BY SECTION 718.503, FLORIDA STATUTES, TO BE FURNISHED BY A DEVELOPER TO A BUYER OR LESSEE. 4011 SALZEDO CONDOMINIUM DEVELOPED BY ALTA CORAL GABLES LLC. STATED DIMENSIONS ARE MEASURED TO THE EXTERIOR BOUNDARIES OF THE EXTERIOR WALLS AND THE CENTERLINE OF INTERIOR DEMISING WALLS AND IN FACT VARY FROM THE DIMENSIONS THAT WOULD BE DETERMINED BY USING THE DESCRIPTION AND DEFINITION OF THE "UNIT" SET FORTH IN THE DECLARATION (WHICH GENERALLY ONLY INCLUDES THE INTERIOR AIRSPACE BETWEEN THE PERIMETER WALLS AND EXCLUDES INTERIOR STRUCTURAL COMPONENTS). FOR YOUR REFERENCE, THE AREA OF THE UNIT, DETERMINED IN ACCORDANCE WITH THOSE DEFINED UNIT BOUNDARIES, IS SET FORTH ON EXHIBIT "3" TO THE DECLARATION. NOTE THAT MEASUREMENTS OF ROOMS SET FORTH ON THIS FLOOR PLAN ARE GENERALLY TAKEN AT THE GREATEST POINTS OF EACH GIVEN ROOM (AS IF THE ROOM WERE A PERFECT RECTANGLE), WITHOUT REGARD FOR ANY CUTOUTS. ACCORDINGLY, THE AREA OF THE ACTUAL ROOM WILL TYPICALLY BE SMALLER THAN THE PRODUCT OBTAINED BY MULTIPLYING THE STATED LENGTH TIMES WIDTH. ALL DIMENSIONS ARE APPROXIMATE AND MAY VARY WITH ACTUAL CONSTRUCTION, AND ALL FLOOR PLANS AND DEVELOPMENT PLANS ARE SUBJECT TO CHANGE. WITHOUT LIMITING THE FOREGOING, THE SIZE, DIMENSIONS AND LOCATIONS OF THE APPLIANCES AND SURROUNDING CABINETRY MAY BE MODIFIED, AND THE OVERALL LAYOUT OF THE KITCHEN MAY CHANGE FROM THAT WHICH IS DEPICTED HEREON.

Creative by Metrostudio.com



CASSIA

THE RESIDENCES AT
CORAL GABLES

B6.1 ADA

RESIDENCE

2 Bedroom
2 Bathroom

Interior

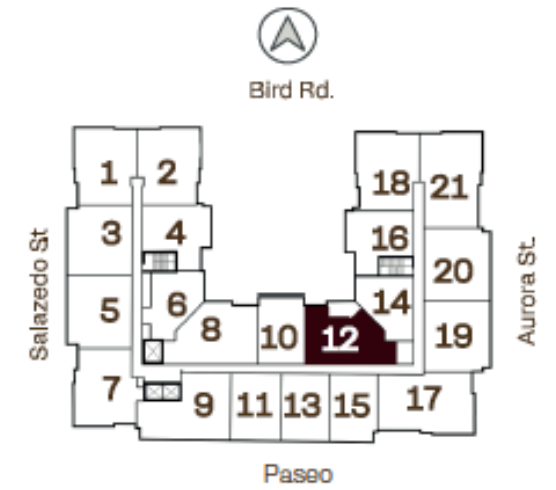
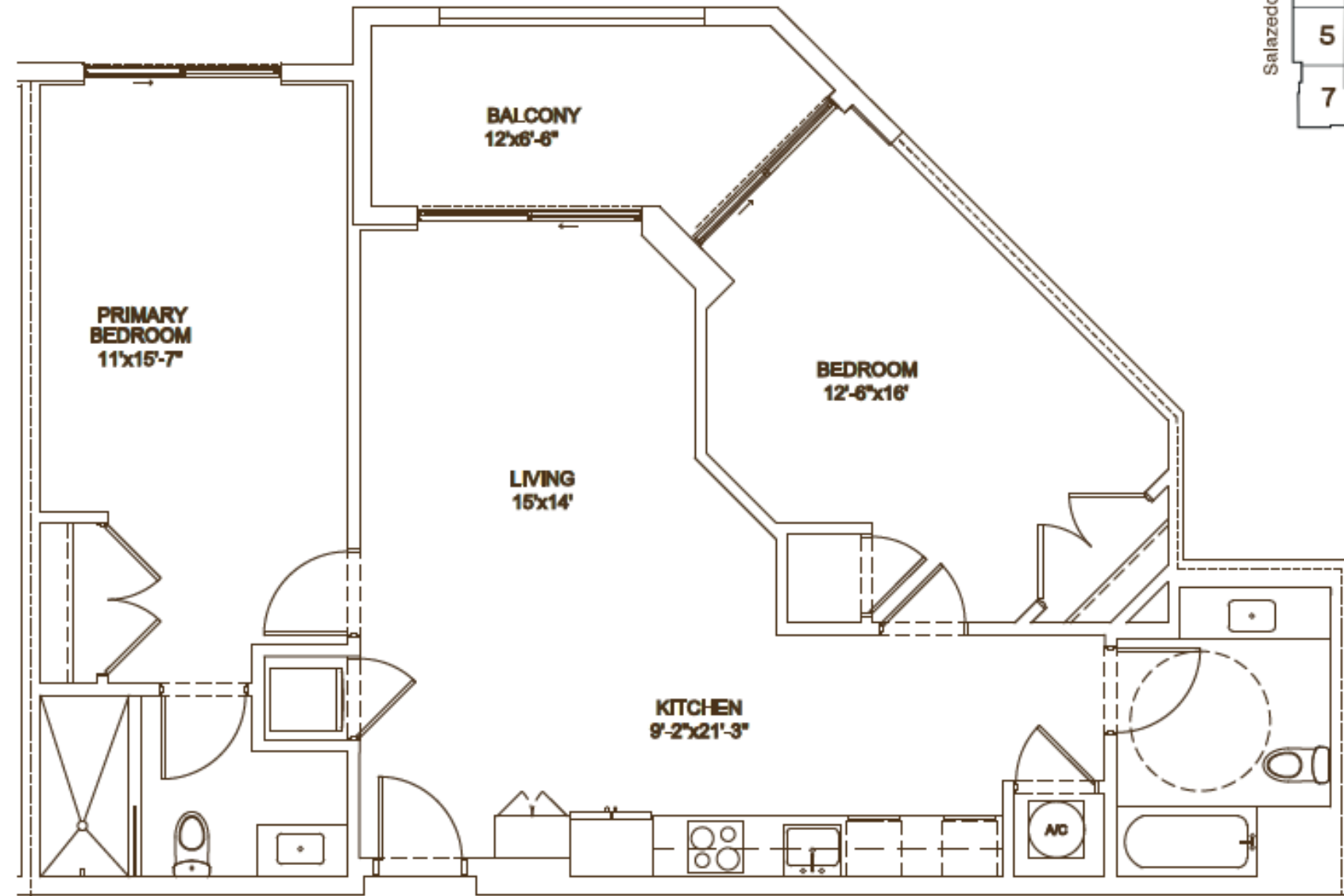
1,127 SQ. SF. / 105 SQ. M²

Exterior

107 SQ. SF. / 10 SQ. M²

Total

1,234 SQ. SF. / 115 SQ. M²



LINE 12
6TH FLOOR



Developed by



Sales & Marketing by



ALL ILLUSTRATIONS ARE ARTISTIC CONCEPTUAL RENDERINGS AND ARE SUBJECT TO CHANGE WITHOUT NOTICE, ORAL REPRESENTATIONS CANNOT BE RELIED UPON AS CORRECTLY STATING REPRESENTATIONS OF THE DEVELOPER. FOR CORRECT REPRESENTATIONS, MAKE REFERENCE TO THE DOCUMENTS REQUIRED BY SECTION 718.503, FLORIDA STATUTES, TO BE FURNISHED BY A DEVELOPER TO A BUYER OR LESSEE. 4011 SALZEDO CONDOMINIUM DEVELOPED BY ALTA CORAL GABLES LLC. STATED DIMENSIONS ARE MEASURED TO THE EXTERIOR BOUNDARIES OF THE EXTERIOR WALLS AND THE CENTERLINE OF INTERIOR DEMISING WALLS AND IN FACT VARY FROM THE DIMENSIONS THAT WOULD BE DETERMINED BY USING THE DESCRIPTION AND DEFINITION OF THE "UNIT" SET FORTH IN THE DECLARATION (WHICH GENERALLY ONLY INCLUDES THE INTERIOR AIRSPACE BETWEEN THE PERIMETER WALLS AND EXCLUDES INTERIOR STRUCTURAL COMPONENTS). FOR YOUR REFERENCE, THE AREA OF THE UNIT, DETERMINED IN ACCORDANCE WITH THOSE DEFINED UNIT BOUNDARIES, IS SET FORTH ON EXHIBIT "3" TO THE DECLARATION. NOTE THAT MEASUREMENTS OF ROOMS SET FORTH ON THIS FLOOR PLAN ARE GENERALLY TAKEN AT THE GREATEST POINTS OF EACH GIVEN ROOM (AS IF THE ROOM WERE A PERFECT RECTANGLE), WITHOUT REGARD FOR ANY CUTOUTS. ACCORDINGLY, THE AREA OF THE ACTUAL ROOM WILL TYPICALLY BE SMALLER THAN THE PRODUCT OBTAINED BY MULTIPLYING THE STATED LENGTH TIMES WIDTH. ALL DIMENSIONS ARE APPROXIMATE AND MAY VARY WITH ACTUAL CONSTRUCTION, AND ALL FLOOR PLANS AND DEVELOPMENT PLANS ARE SUBJECT TO CHANGE. WITHOUT LIMITING THE FOREGOING, THE SIZE, DIMENSIONS AND LOCATIONS OF THE APPLIANCES AND SURROUNDING CABINETRY MAY BE MODIFIED, AND THE OVERALL LAYOUT OF THE KITCHEN MAY CHANGE FROM THAT WHICH IS DEPICTED HEREON.

Creative by Metrostudio.com



CASSIA

THE RESIDENCES AT
CORAL GABLES

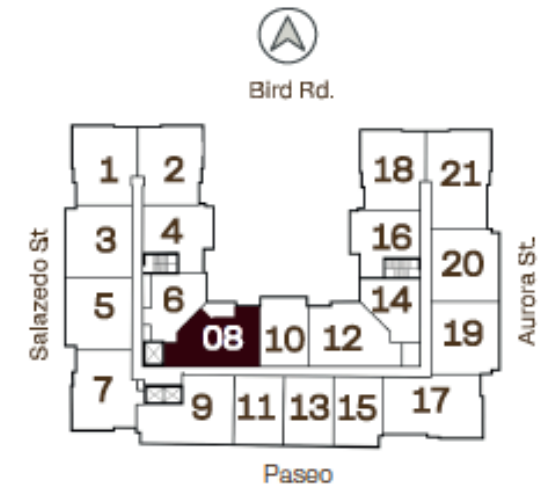
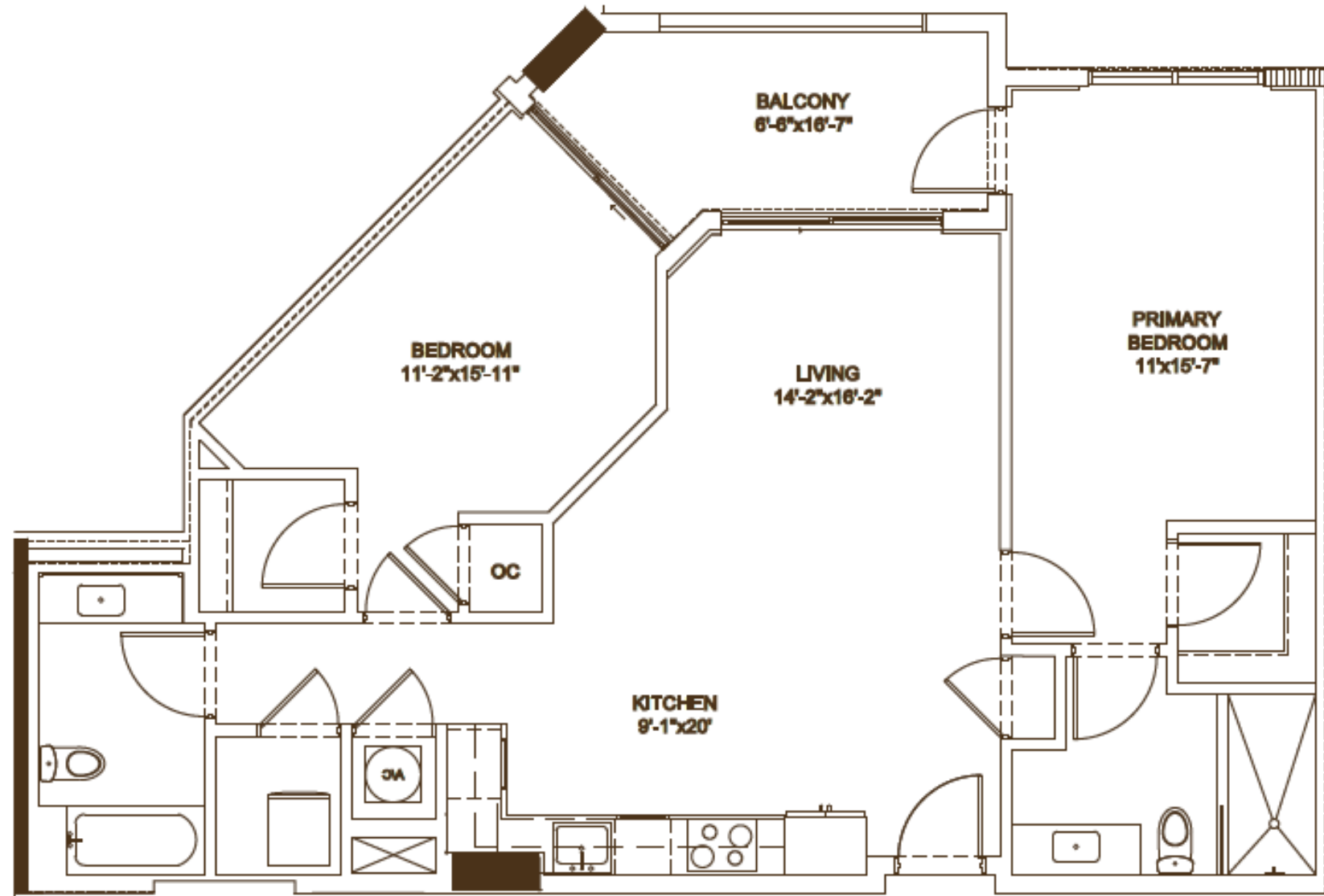
B 6 RESIDENCE

2 Bedrooms
2 Bathrooms

Interior
1,127 SQ. SF. / 105 SQ. M²

Exterior
107 SQ. SF. / 10 SQ. M²

Total
1,234 SQ. SF. / 115 SQ. M²



**LINE 08
FLOORS 7-12**



Developed by **ALTA DEVELOPERS** Sales & Marketing by **CERVERA REAL ESTATE • 1969**

ALL ILLUSTRATIONS ARE ARTISTIC CONCEPTUAL RENDERINGS AND ARE SUBJECT TO CHANGE WITHOUT NOTICE, ORAL REPRESENTATIONS CANNOT BE RELIED UPON AS CORRECTLY STATING REPRESENTATIONS OF THE DEVELOPER. FOR CORRECT REPRESENTATIONS, MAKE REFERENCE TO THE DOCUMENTS REQUIRED BY SECTION 718.503, FLORIDA STATUTES, TO BE FURNISHED BY A DEVELOPER TO A BUYER OR LESSEE. 4011 SALZEDO CONDOMINIUM DEVELOPED BY ALTA CORAL GABLES LLC. STATED DIMENSIONS ARE MEASURED TO THE EXTERIOR BOUNDARIES OF THE EXTERIOR WALLS AND THE CENTERLINE OF INTERIOR DEMISING WALLS AND IN FACT VARY FROM THE DIMENSIONS THAT WOULD BE DETERMINED BY USING THE DESCRIPTION AND DEFINITION OF THE "UNIT" SET FORTH IN THE DECLARATION (WHICH GENERALLY ONLY INCLUDES THE INTERIOR AIRSPACE BETWEEN THE PERIMETER WALLS AND EXCLUDES INTERIOR STRUCTURAL COMPONENTS). FOR YOUR REFERENCE, THE AREA OF THE UNIT, DETERMINED IN ACCORDANCE WITH THOSE DEFINED UNIT BOUNDARIES, IS SET FORTH ON EXHIBIT "3" TO THE DECLARATION. NOTE THAT MEASUREMENTS OF ROOMS SET FORTH ON THIS FLOOR PLAN ARE GENERALLY TAKEN AT THE GREATEST POINTS OF EACH GIVEN ROOM (AS IF THE ROOM WERE A PERFECT RECTANGLE), WITHOUT REGARD FOR ANY CUTOUTS. ACCORDINGLY, THE AREA OF THE ACTUAL ROOM WILL TYPICALLY BE SMALLER THAN THE PRODUCT OBTAINED BY MULTIPLYING THE STATED LENGTH TIMES WIDTH. ALL DIMENSIONS ARE APPROXIMATE AND MAY VARY WITH ACTUAL CONSTRUCTION, AND ALL FLOOR PLANS AND DEVELOPMENT PLANS ARE SUBJECT TO CHANGE. WITHOUT LIMITING THE FOREGOING, THE SIZE, DIMENSIONS AND LOCATIONS OF THE APPLIANCES AND SURROUNDING CABINETRY MAY BE MODIFIED, AND THE OVERALL LAYOUT OF THE KITCHEN MAY CHANGE FROM THAT WHICH IS DEPICTED HEREON.

Creative by Metrostudio.com



CASSIA
THE RESIDENCES AT
CORAL GABLES

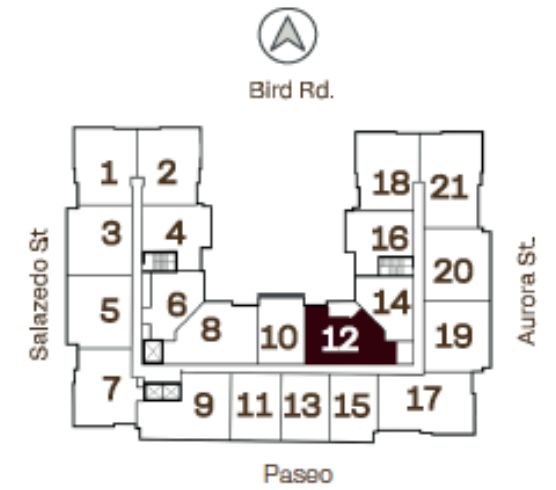
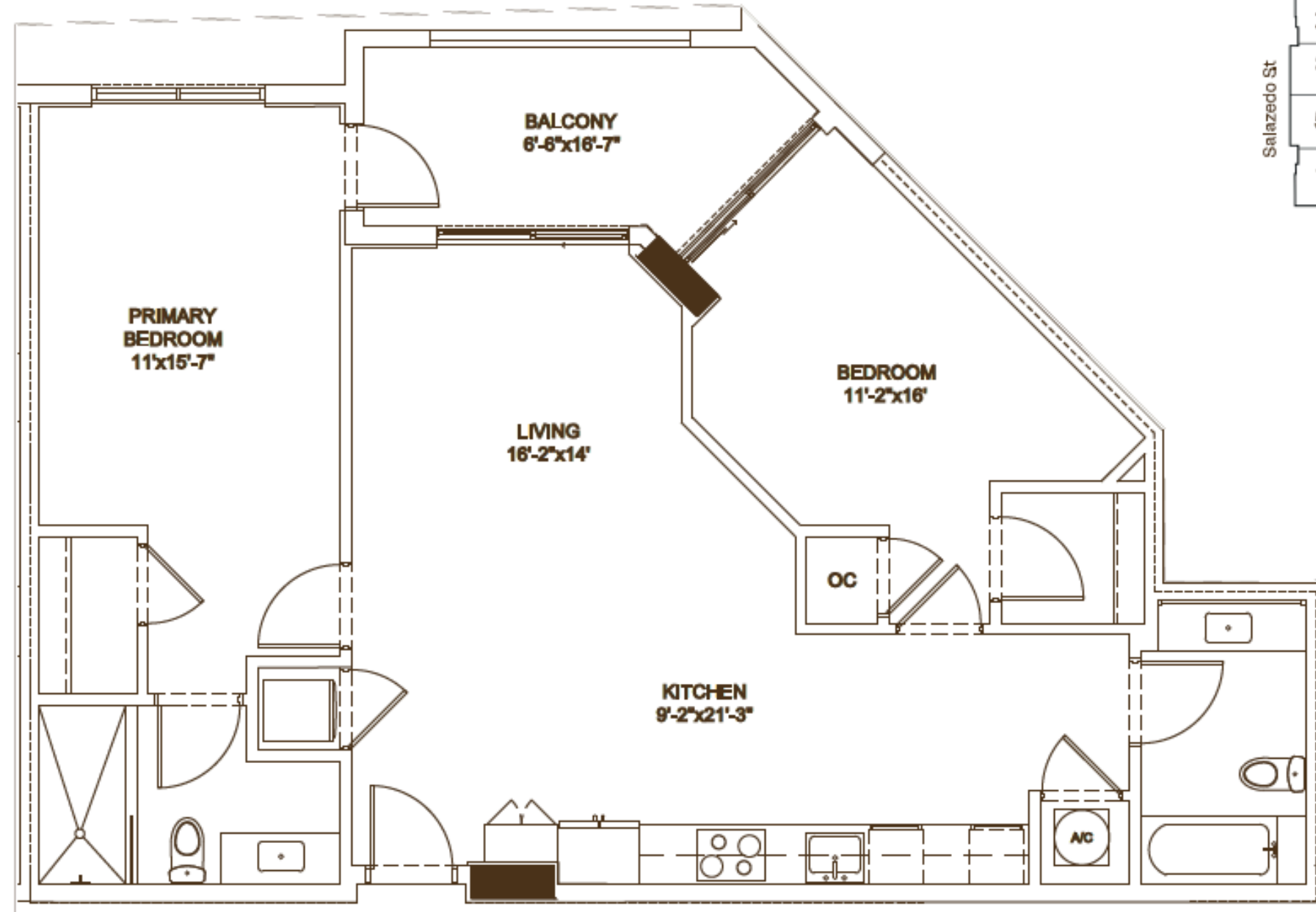
B6.1 RESIDENCE

2 Bedroom
2 Bathroom

Interior
1,127 SQ. SF. / 105 SQ. M²

Exterior
107 SQ. SF. / 10 SQ. M²

Total
1,234 SQ. SF. / 115 SQ. M²



**LINE 12
FLOORS 7-12**



Developed by



Sales & Marketing by



ALL ILLUSTRATIONS ARE ARTISTIC CONCEPTUAL RENDERINGS AND ARE SUBJECT TO CHANGE WITHOUT NOTICE, ORAL REPRESENTATIONS CANNOT BE RELIED UPON AS CORRECTLY STATING REPRESENTATIONS OF THE DEVELOPER. FOR CORRECT REPRESENTATIONS, MAKE REFERENCE TO THE DOCUMENTS REQUIRED BY SECTION 718.503, FLORIDA STATUTES, TO BE FURNISHED BY A DEVELOPER TO A BUYER OR LESSEE. 4011 SALZEDO CONDOMINIUM DEVELOPED BY ALTA CORAL GABLES LLC. STATED DIMENSIONS ARE MEASURED TO THE EXTERIOR BOUNDARIES OF THE EXTERIOR WALLS AND THE CENTERLINE OF INTERIOR DEMISING WALLS AND IN FACT VARY FROM THE DIMENSIONS THAT WOULD BE DETERMINED BY USING THE DESCRIPTION AND DEFINITION OF THE "UNIT" SET FORTH IN THE DECLARATION (WHICH GENERALLY ONLY INCLUDES THE INTERIOR AIRSPACE BETWEEN THE PERIMETER WALLS AND EXCLUDES INTERIOR STRUCTURAL COMPONENTS). FOR YOUR REFERENCE, THE AREA OF THE UNIT, DETERMINED IN ACCORDANCE WITH THOSE DEFINED UNIT BOUNDARIES, IS SET FORTH ON EXHIBIT "3" TO THE DECLARATION. NOTE THAT MEASUREMENTS OF ROOMS SET FORTH ON THIS FLOOR PLAN ARE GENERALLY TAKEN AT THE GREATEST POINTS OF EACH GIVEN ROOM (AS IF THE ROOM WERE A PERFECT RECTANGLE), WITHOUT REGARD FOR ANY CUTOUTS. ACCORDINGLY, THE AREA OF THE ACTUAL ROOM WILL TYPICALLY BE SMALLER THAN THE PRODUCT OBTAINED BY MULTIPLYING THE STATED LENGTH TIMES WIDTH. ALL DIMENSIONS ARE APPROXIMATE AND MAY VARY WITH ACTUAL CONSTRUCTION, AND ALL FLOOR PLANS AND DEVELOPMENT PLANS ARE SUBJECT TO CHANGE. WITHOUT LIMITING THE FOREGOING, THE SIZE, DIMENSIONS AND LOCATIONS OF THE APPLIANCES AND SURROUNDING CABINETRY MAY BE MODIFIED, AND THE OVERALL LAYOUT OF THE KITCHEN MAY CHANGE FROM THAT WHICH IS DEPICTED HEREON.

Creative by Metrostudio.com