

# BAY HARBOR TOWERS

A COLLECTION OF FORTY-FOUR PRIVATE RESIDENCES,  
MARKING THE ARRIVAL OF A NEW WATERFRONT ICON.





# BAY HARBOR ISLANDS MOST COVETED WATERFRONT ADDRESS

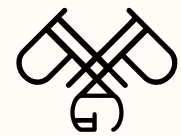
10141 E BAY HARBOR DRIVE  
BAY HARBOR ISLANDS, FLORIDA 33154



AN EXCEPTIONAL  
TEAM



# DEVELOPER



**PPG DEVELOPMENT**

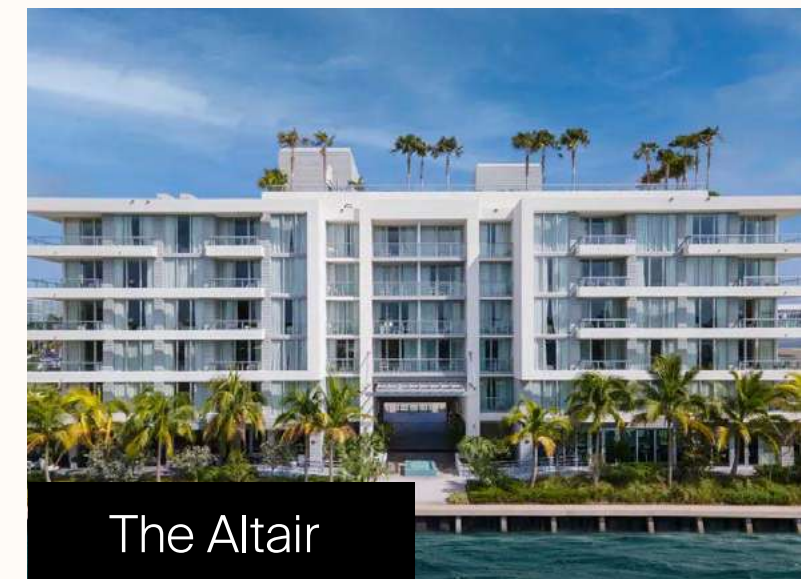
- » Founded by Ari Pearl, with over 20 years of experience
- » PPG portfolio has 2,500+ residential units and hospitality projects throughout South Florida
- » Recent success across condo, multi-family, hotel/resort, marina & golf courses
- » Bringing highly amenitized properties to market are their specialty
- » PPG has a proven track record of on-time delivery
- » Deep knowledge about the Bay Harbor Islands customer and strong relationship with local government



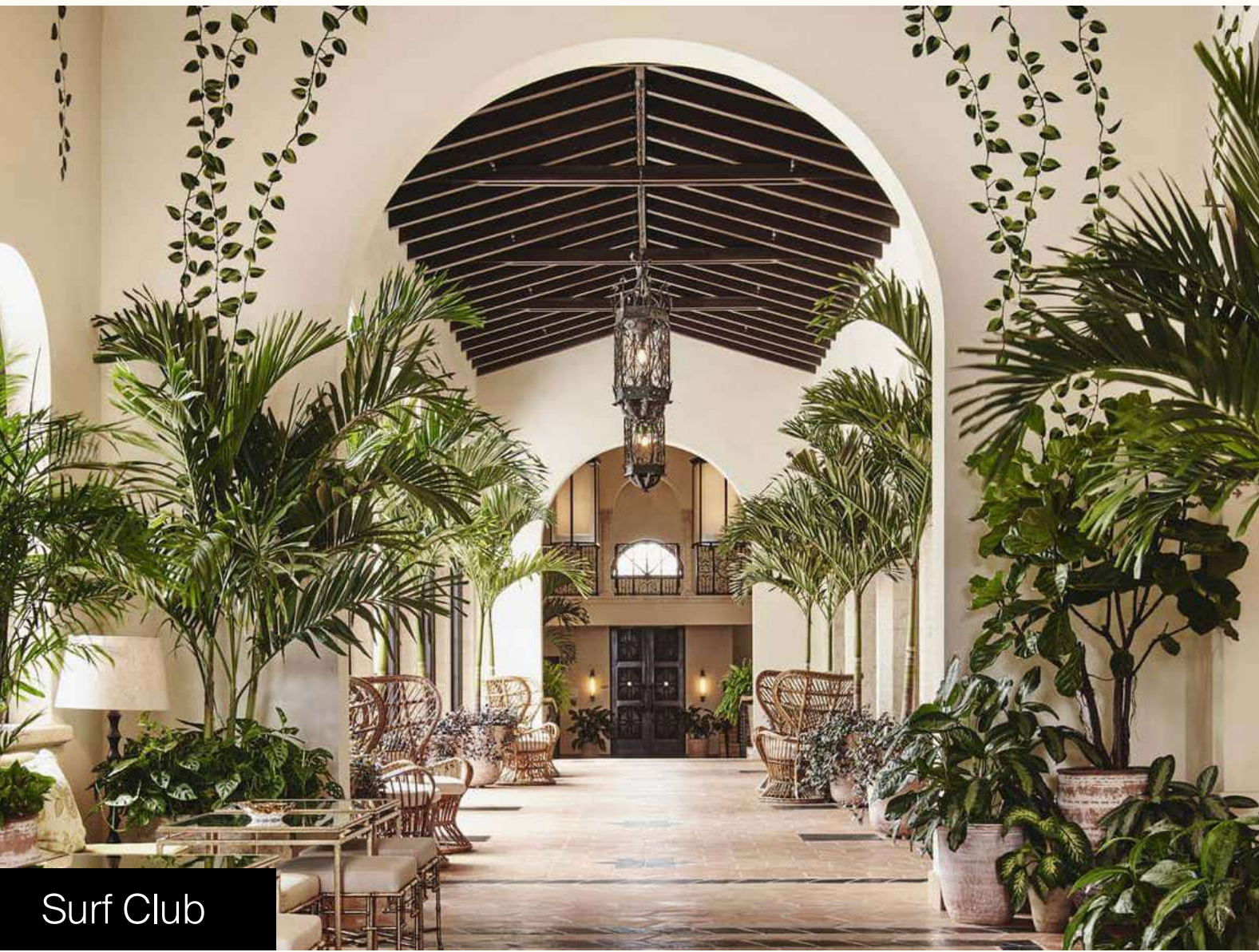
Shell Bay



Slate Tower



The Altair



Surf Club



Château Beach



Palazzo del Sol



ARCHITECT



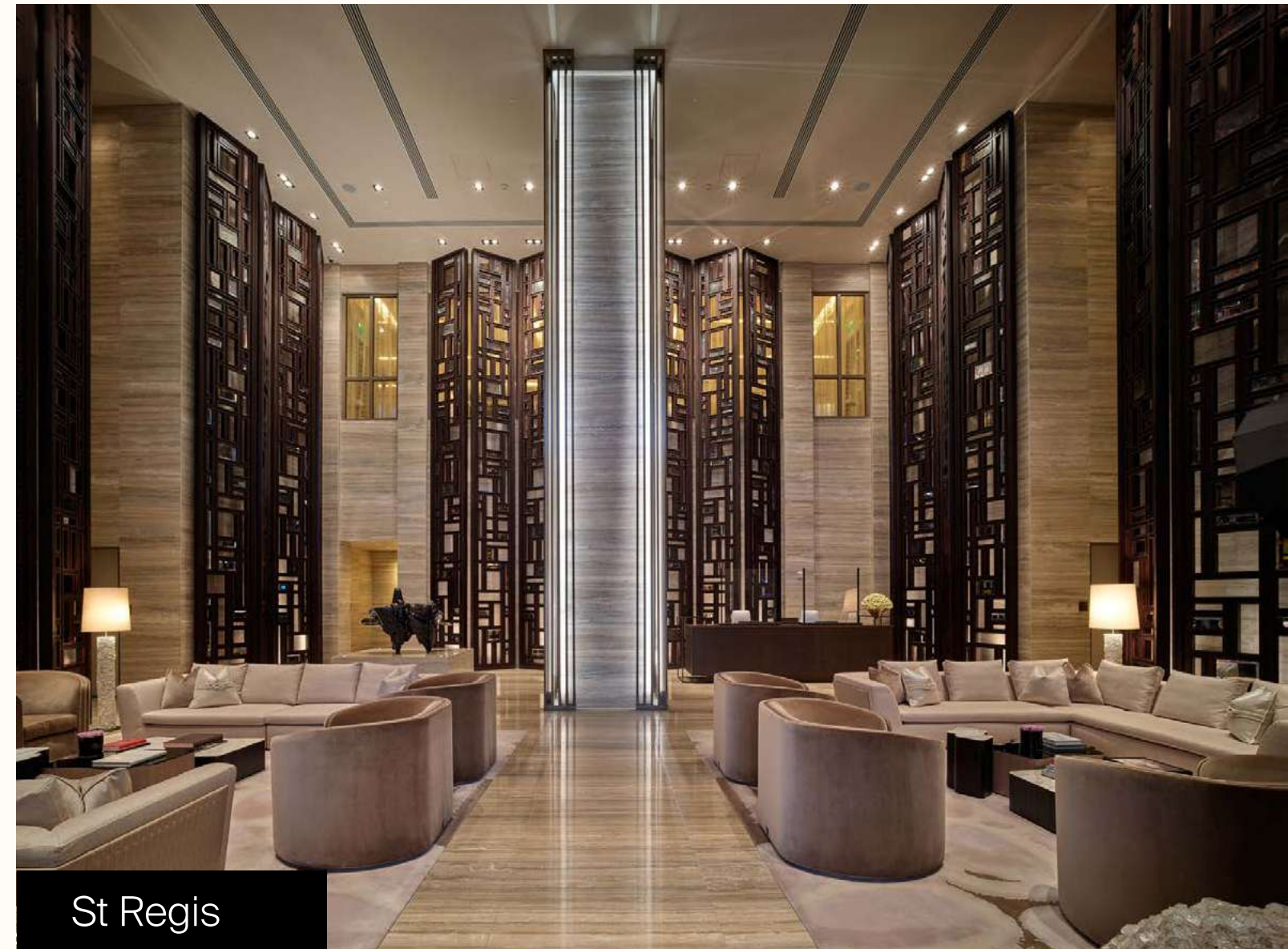
- » Kobi Karp has over 2 decades of hospitality, retail and high-rise residential development experience
- » They have designed over \$36B in mixed-use commercial, residential, and multi-family worldwide
- » Kobi Karp & Ari Pearl have collaborated with great success on multiple projects

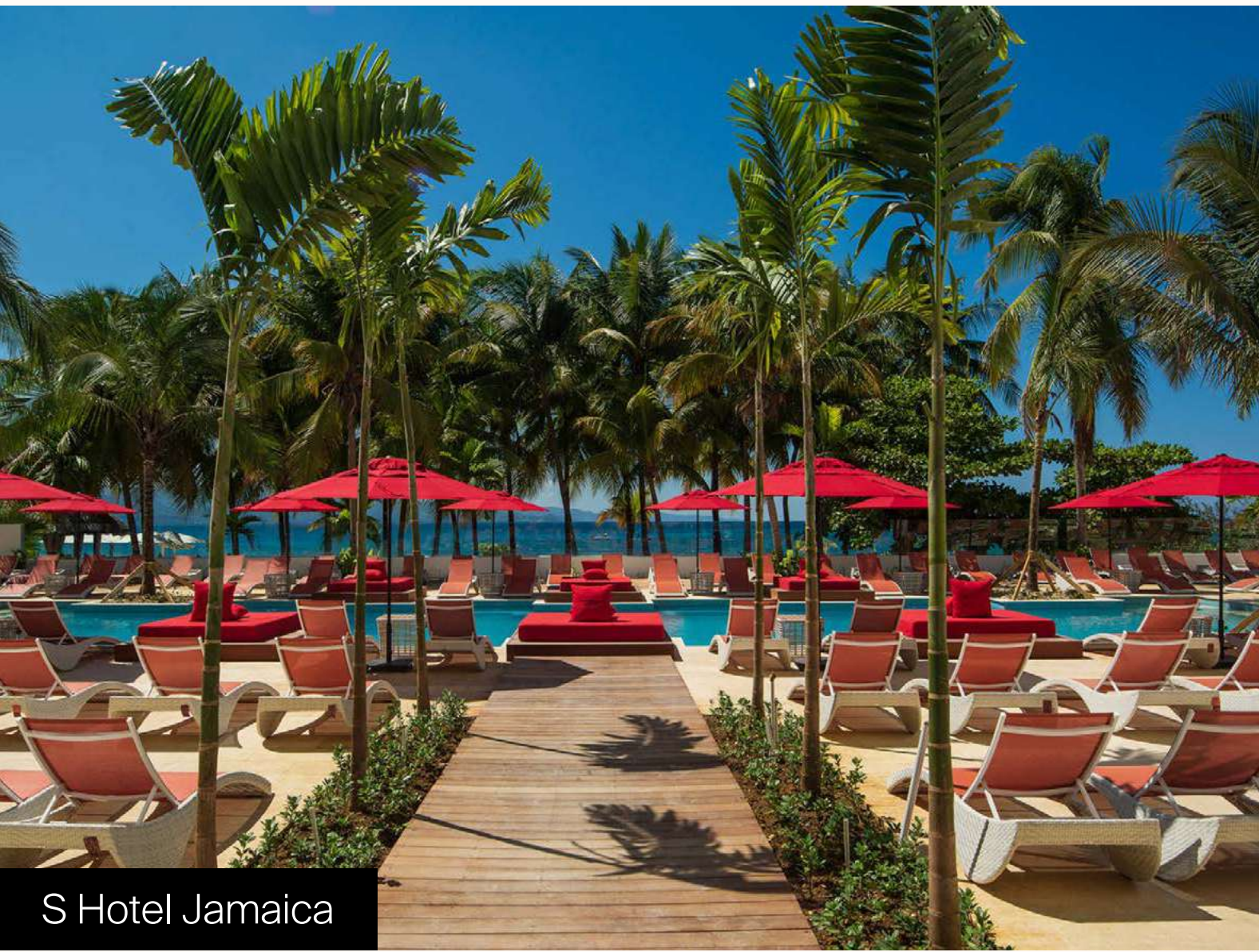


# INTERIOR DESIGN

*Interiors* by STEVEN G. INC.

- » Interiors by Steven G. has been in business for over 40 years, and is a full-service design firm helmed by Steven Gurowitz
- » They have designed notable luxury residential projects, restaurants, hotels, commercial spaces, condos, and private homes in South Florida





S Hotel Jamaica

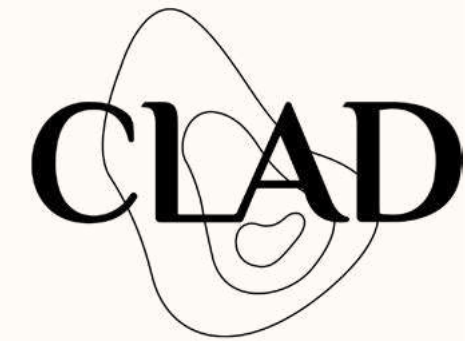


I+SW Residence



C+JE Residence

# LANDSCAPING



- » Founded by Carolina Monteiro in 2017
- » Experience in boutique hotels, larger developments and private residences
- » Creates timeless outdoor spaces that seamlessly integrate indoor-outdoor living



# THE NEIGHBORHOOD



SUNNY ISLES

KEYSTONE  
ISLANDS

NORTH MIAMI

MIAMI SHORES

BISCAYNE  
BAY

INDIAN CREEK  
ISLAND

BAL HARBOUR

BAY HARBOR  
ISLANDS

SURFSIDE

BISCAYNE  
POINT

NORMANDY  
ISLES

NORTH BAY  
VILLAGE

ATLANTIC  
OCEAN



AREA KEY:

- |                      |                       |
|----------------------|-----------------------|
| 1 BAY HARBOR ISLANDS | 3 SUNNY ISLES         |
| 2 AVENTURA           | 4 BAL HARBOUR VILLAGE |



BAY HARBOR TOWERS



## WALKABILITY



- » Cafe's
- » Restaurants
- » Schools
- » Parks
- » Shopping
- » Beaches



## SHOP & EAT

- » Bal Harbour Shops
- » Carpaccio
- » Aba Mediterranean
- » Le Zoo
- » Makoto
- » Pura Vida



# WATER ACTIVITIES

- » Boating
- » Ocean boardwalk
- » Marina
- » Sandy beaches
- » Beach club access





---

# BUILDING OVERVIEW



- 
- » Iconic 8-story waterfront property featuring 44 exclusive residences located on Indian Creek waterway
  - » Spacious 2–4 bedroom + den homes ranging from 1,870 – 3,393 SF
  - » Flow-through layouts with bay views and indoor-outdoor living
  - » Bayhouse and Penthouse residences featuring private pools and terraces
  - » Florida Green Building Coalition certified
  - » Private marina with 13 boat slips
  - » Common areas featuring the exquisite Italian furniture brand Hessentia by Cornelio Cappellini





BAY HARBOR TOWERS



# HESENTIA

- » Sophisticated design with unique bespoke furniture in the common areas by Hessentialia Cornelio Capellini
- » Steven G's white-glove interior design services

HESENTIA | CORNELIO CAPPELLINI





# SERVICES

---

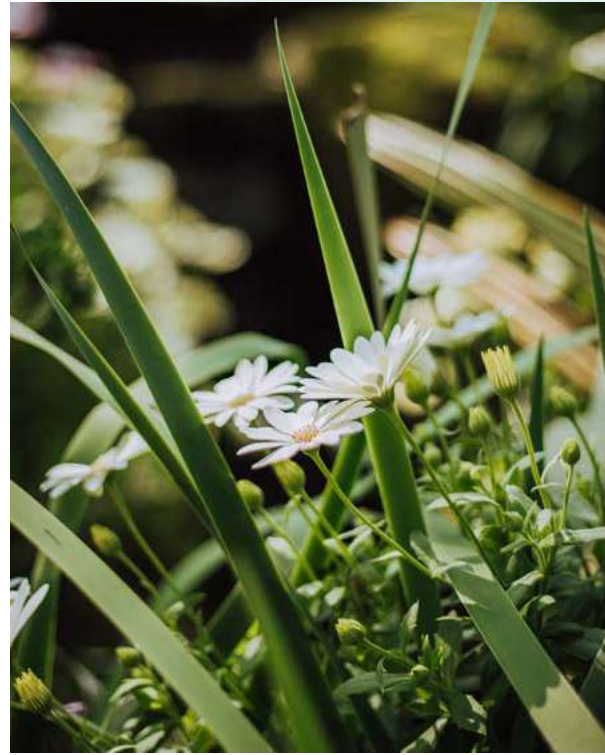
- » 24/7 front-desk concierge
- » Valet service
- » Beach club access
- » Covered Parking with EV charging
- » Bicycle and water sports storage







# THE AMENITIES



# AMENITIES

- » Owners lounge with news cafe
- » Private marina with 13 boat slips
- » Relaxing hammock garden
- » Outdoor garden terrace



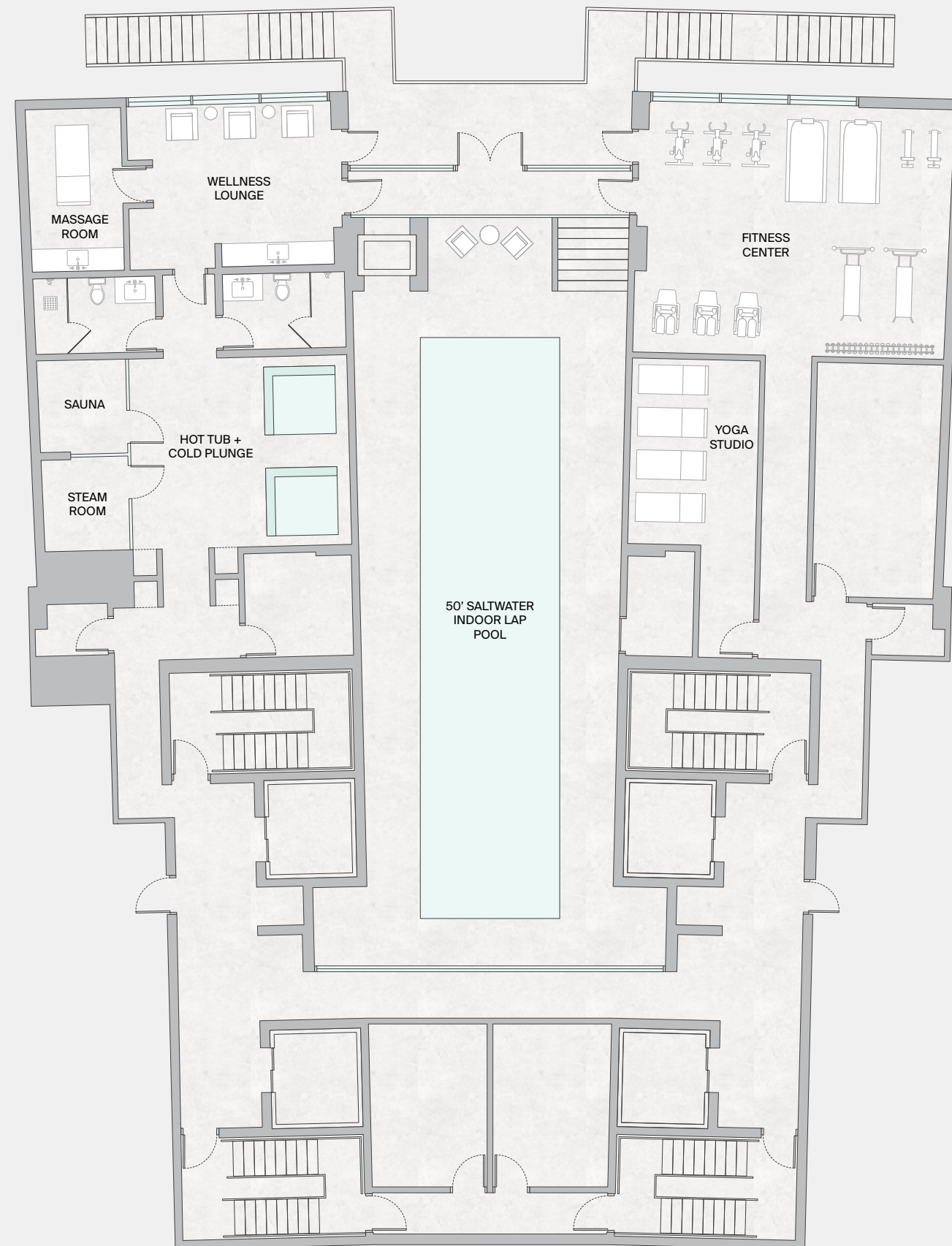


VISIONARY ARCHITECTURE OF THE 20TH CENTURY  
Elliott Erwitt Snaps

# HEALTH & WELLNESS

---

- » 50' Saltwater Indoor Pool
- » Massage Room
- » Fitness Center
- » Sauna & Steam Room
- » Hot & Cold Plunge
- » Yoga Studio
- » Wellness Lounge



BAY HARBOR TOWERS



## AMENITIES

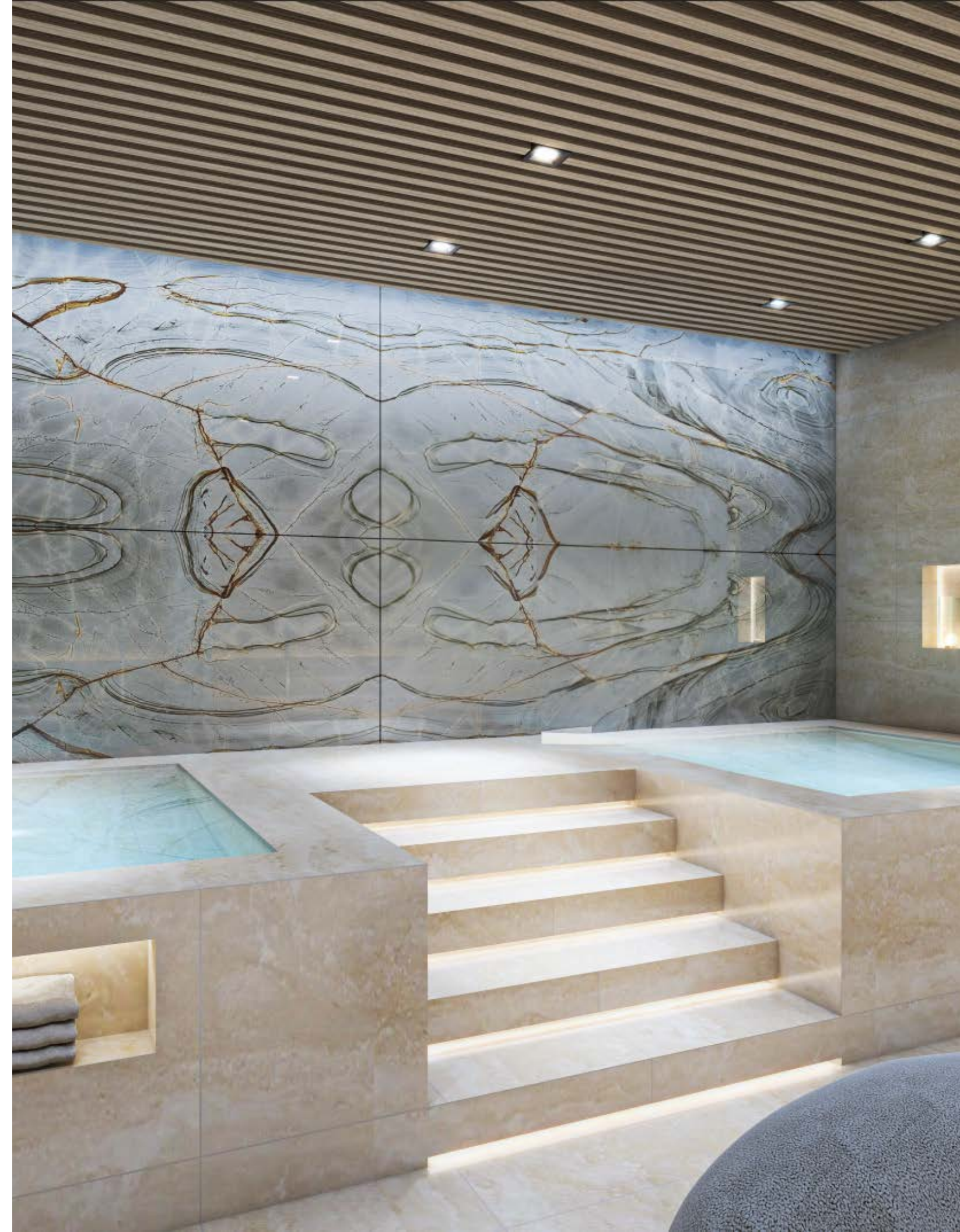
- » State-of-the-art fitness center with bespoke Paragon® equipment
- » Yoga studio





# WELLNESS

- » 50' heated saltwater indoor lap pool and hot/cold plunge
- » Wellness spa with sauna, steam, massage treatment rooms

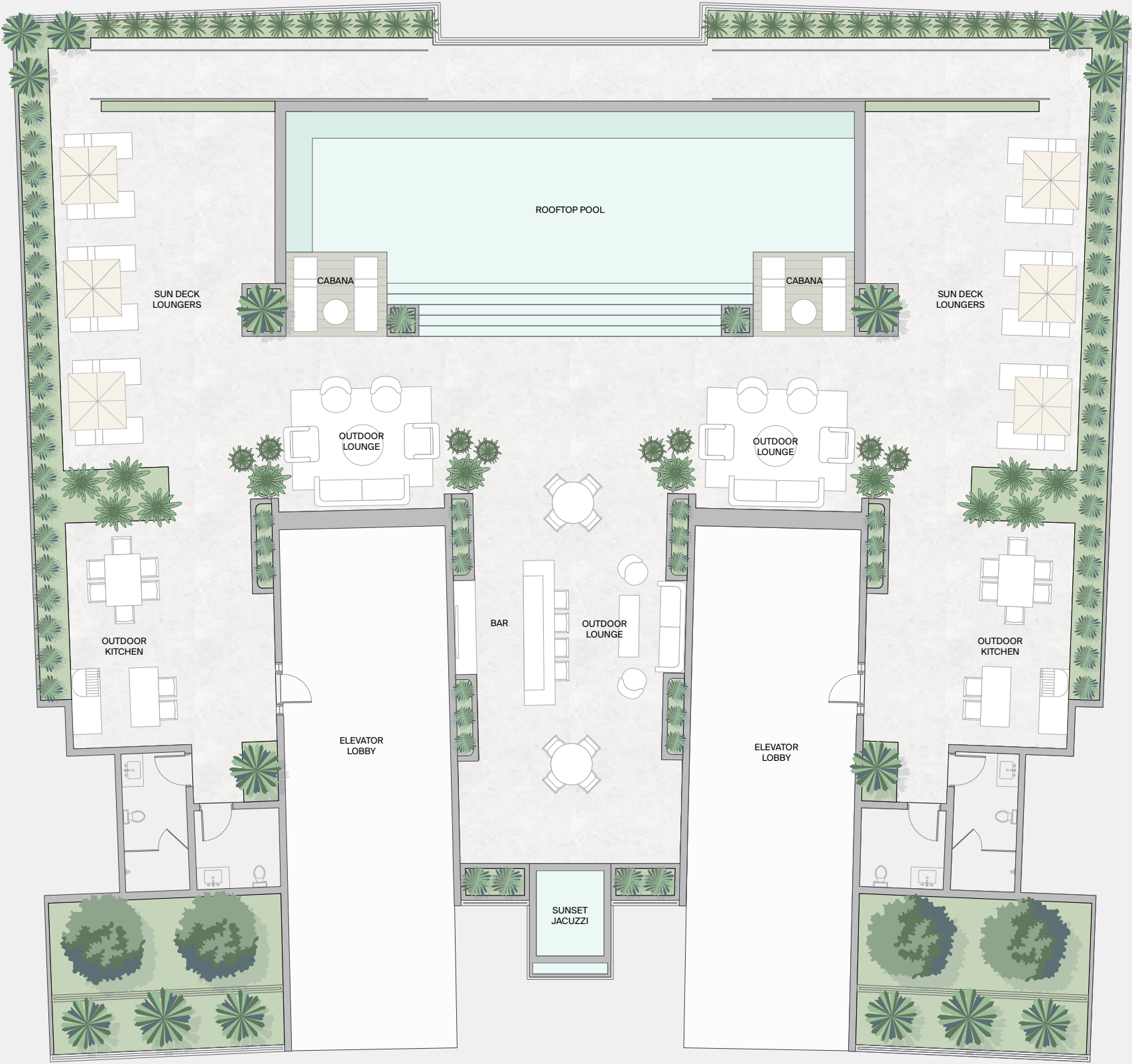






# ROOFTOP RETREAT

- » Rooftop Pool
- » Cabanas
- » Sun Deck Loungers
- » Lounge
- » Outdoor Kitchens
- » Sunset Jacuzzi



# ROOFTOP RETREAT

- » Rooftop pool sundeck with sun-loungers, daybeds and cabanas
- » Open-air summer kitchen with barbeque grills and dining areas
- » Sunset rooftop jacuzzi











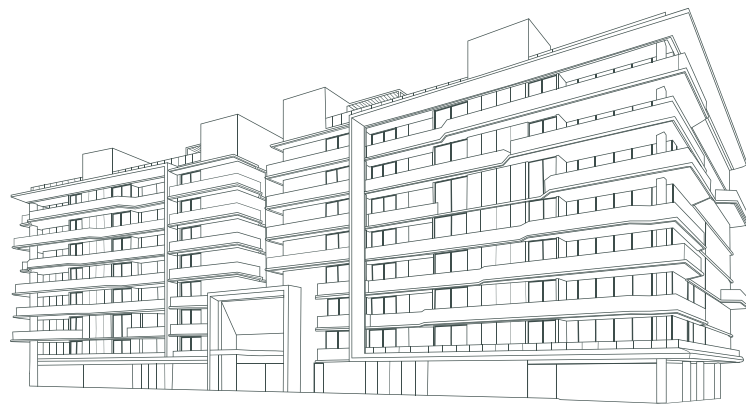


# THE RESIDENCES



---

# RESIDENCE FEATURES



- 
- » Private and semi-private elevator entry access to private residence foyers
  - » Expansive, open-concept kitchen, dining and living areas
  - » Floor-to-ceiling, hurricane-impact glass windows provide abundant natural light
  - » Deep, wrap-around sunrise and sunset terraces
  - » Private pools, summer kitchens with dining and outdoor lounge areas with firepits in Penthouse residences







---

# CHEF'S KITCHEN

- » Honed marble countertops
- » Beautiful wood fluted custom cabinets with brass pulls

## **Premium appliance package:**

- » Wolf® 5-burner gas stove and cooktop
- » Subzero® fridge/freezer and separate wine fridge
- » 44" sink workstation
- » Dornbracht® faucets and pot filler



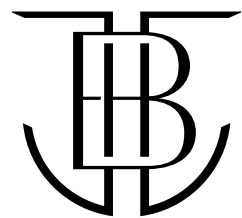


## PRIMARY BATHROOMS

---

- » Custom oak wood double-vanity with honed marble countertops and brushed bronze accents
- » Ultra-luxurious porcelain flooring throughout
- » Over-sized, sculptural soaking tub intentionally designed for deep relaxation
- » Full height glass enclosed luxury shower system with adjustable hand shower and oversized rainfall showerhead





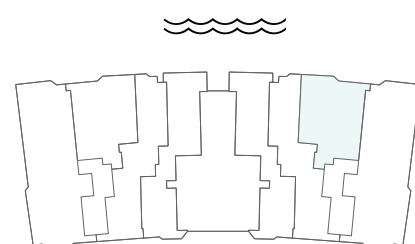
BAY HARBOR  
TOWERS

## Residence 302

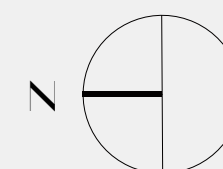
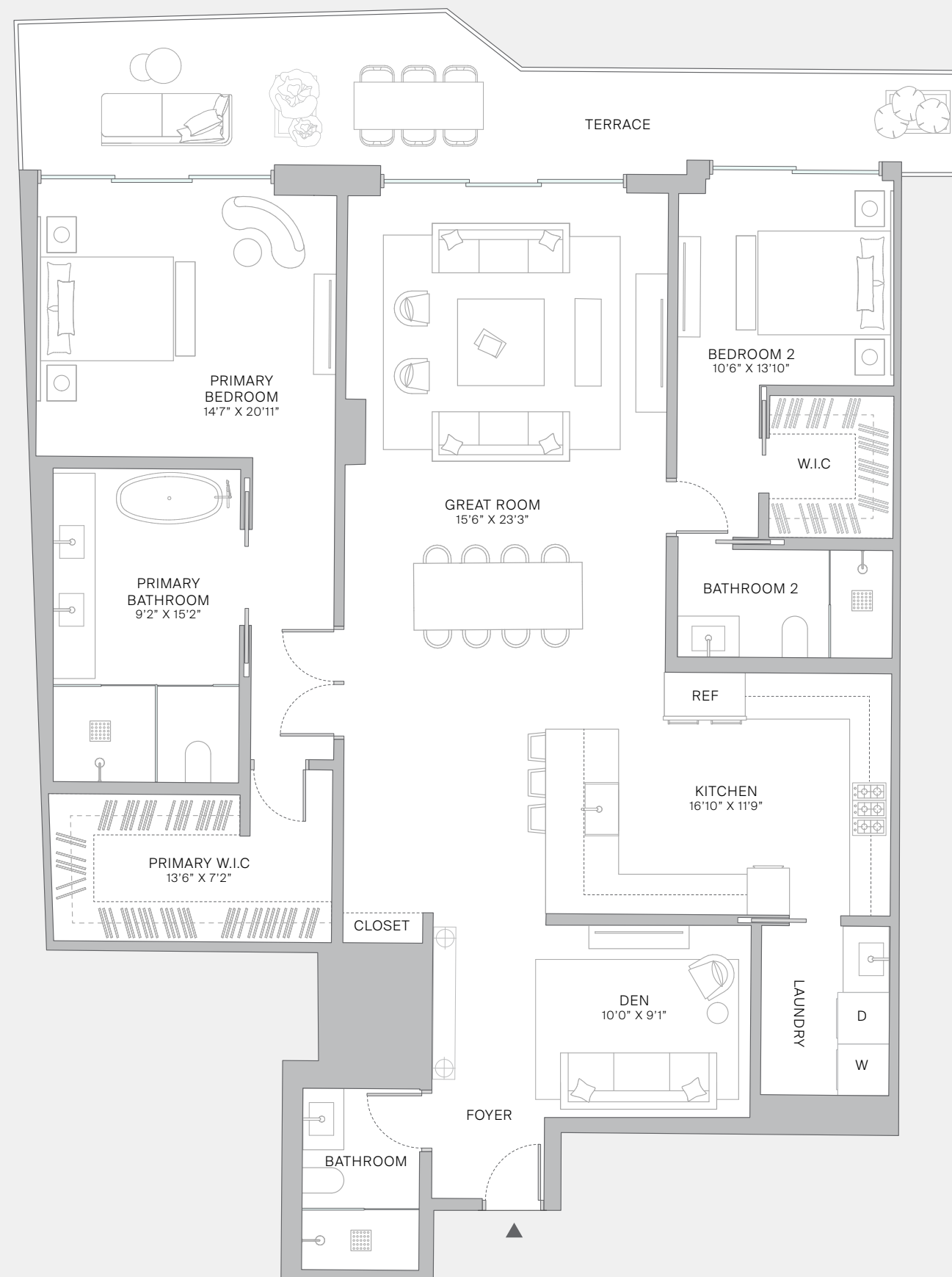
2 BEDROOM + DEN  
3 BATHROOM

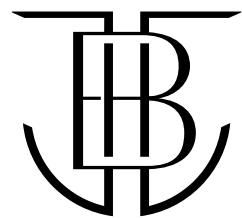
INTERIOR  
1,907 SF / 177 SM

EXTERIOR  
256 SF / 24 SM



EAST BAY HARBOR DRIVE





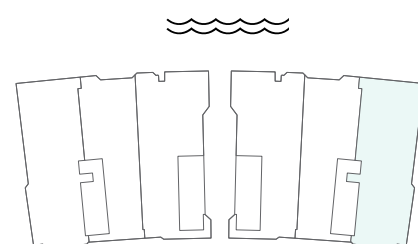
BAY HARBOR  
TOWERS

## Residence 601

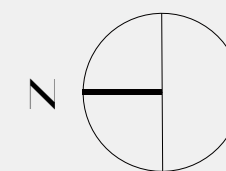
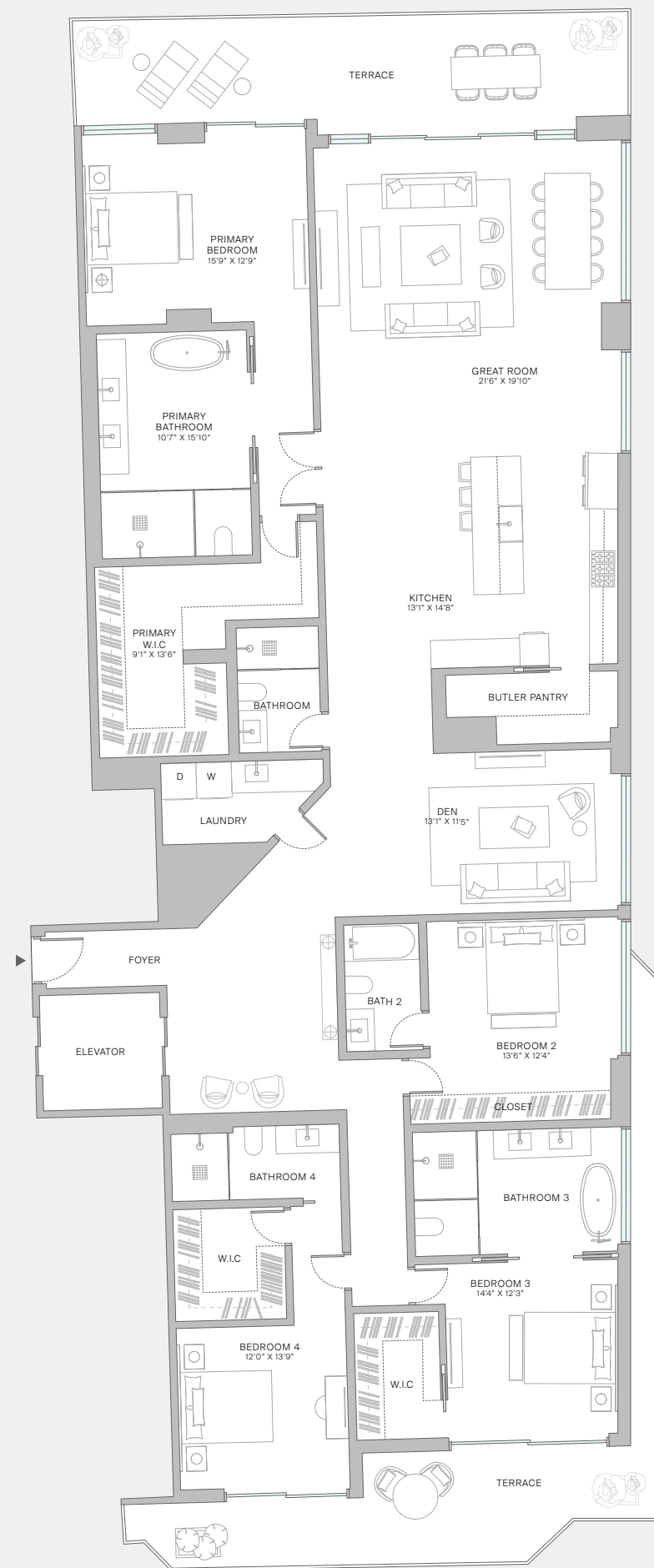
4 BEDROOM + DEN  
5 BATHROOM

INTERIOR  
3,421 SF / 317 SM

EXTERIOR  
525 SF / 49 SM



EAST BAY HARBOR DRIVE

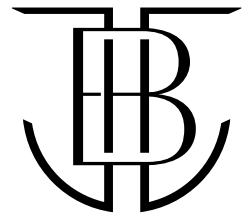




THE  
**BAYHOUSE**  
RESIDENCES

THE  
**PENTHOUSE**  
RESIDENCES

This exclusive collection offers four Penthouse residences and two waterfront Bayhouse residences, each a masterpiece of design and luxury featuring oversized dual, walk-in closets, spa bathrooms, and private terraces throughout the living spaces. The Penthouses boast private pools, summer kitchens, and outdoor lounge areas with firepits, while the Bayhouse residences offer a semi-private bayside terrace and pool, along with an outdoor summer kitchen and BBQ area.

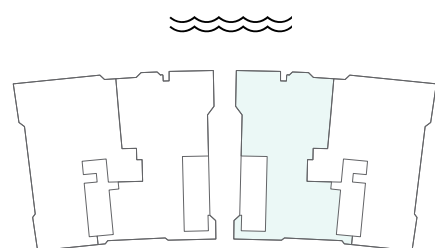


BAY HARBOR  
TOWERS

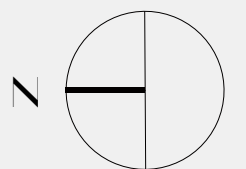
## Penthouse 802

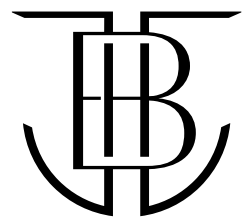
4 BEDROOM + DEN  
7 BATHROOM

INTERIOR  
4,587 SF / 426 SM



EAST BAY HARBOR DRIVE

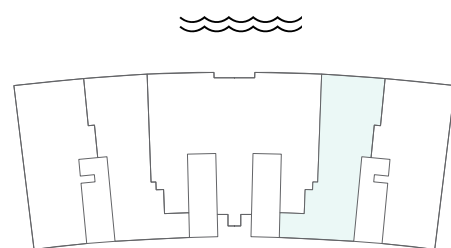




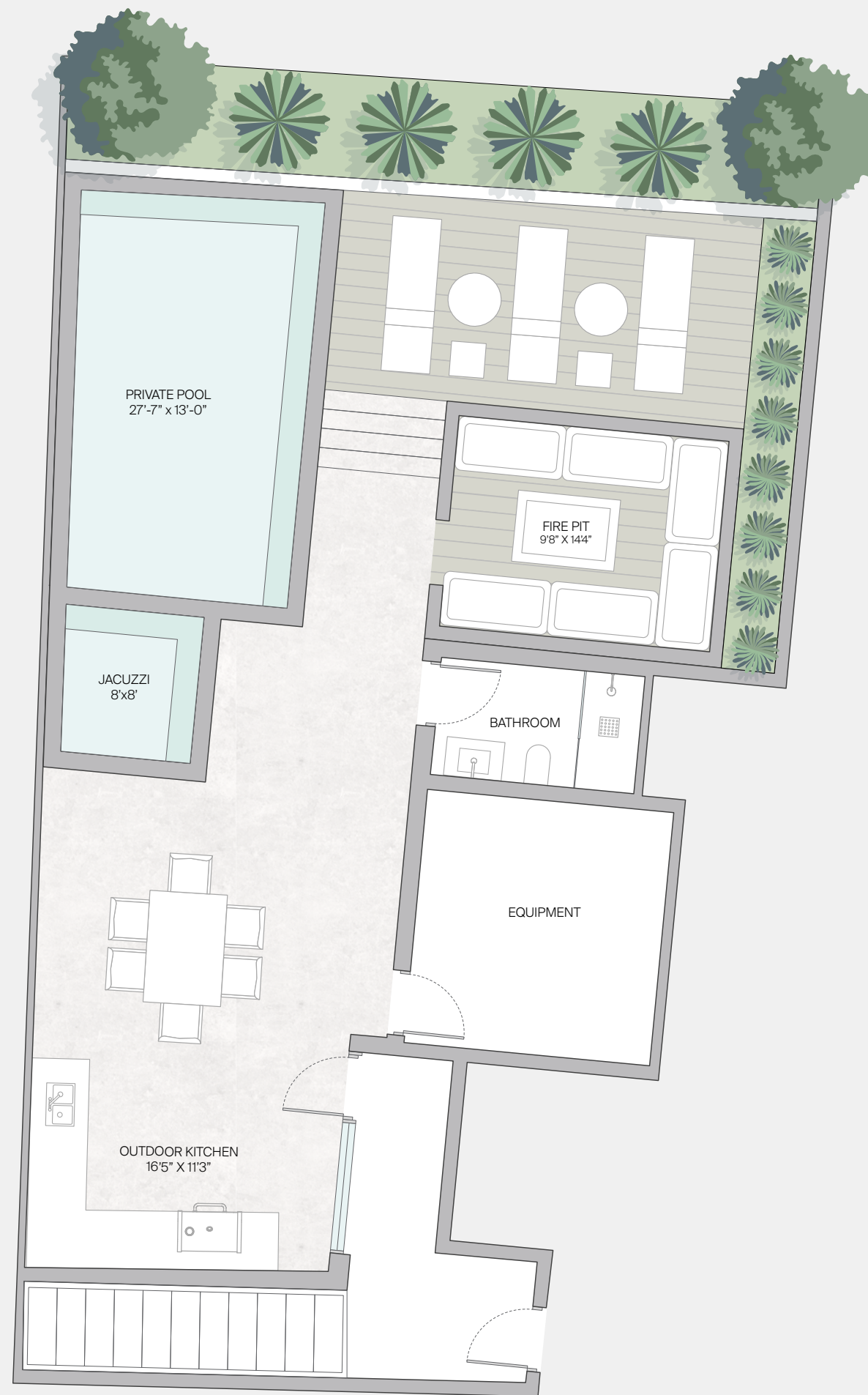
BAY HARBOR  
TOWERS

# Penthouse Rooftop 802

PRIVATE TERRACE  
1,805 SF / 167 SM



EAST BAY HARBOR DRIVE





DEPOSITS

BAY HARBOR TOWERS

# BUYER DEPOSIT STRUCTURE

20% at Contract

10% at Groundbreaking

10% at Top Off

60% at Closing



# THANK YOU

 **ORAL REPRESENTATIONS CANNOT BE RELIED UPON AS CORRECTLY STATING REPRESENTATIONS OF THE DEVELOPER. FOR CORRECT REPRESENTATIONS, MAKE REFERENCE TO THIS BROCHURE AND TO THE DOCUMENTS REQUIRED BY SECTION 718.503, FLORIDA STATUTES, TO BE FURNISHED BY A DEVELOPER TO A BUYER OR LESSEE.**

These materials are not an offer to sell or solicitation and no solicitation, offer or sale of a unit will be made in any jurisdiction in which such activity would be unlawful, prior to registration in such jurisdiction. No representations are made herein, nor shall any statements be relied upon, unless set forth in the documents required to be furnished by a developer to a buyer or lessee, pursuant to Section 718.503, Florida Statutes. All plans, sketches, renderings, pictures, illustrations, images, designs, finishes, brands, appliances, furnishings, amenities, sizes and dimensions, and other features depicted or described herein, are conceptual in nature and are based upon preliminary development plans, which are not to scale, are subject to change, and may not be representative of standard features of the residences, the amenities or other portions of the condominium. Colors and finishes as shown in sales brochures or other marketing materials, including, but not limited to, stone, marble, wood and other finishes, are subject to variations, and will weather and fade. No representations or other assurances upon which a buyer may rely are made that any items depicted or described herein will be provided or, if provided, that they will be of the same type, size, location or nature as depicted or described herein, unless set forth in the applicable purchase agreement. Renderings and other materials depict views which are not identical from each unit, and depictions of surrounding areas which are for conceptual purposes only, which are not entirely accurate, which may change from time to time, and which may be substantially altered or eliminated by future development, forces of nature, or otherwise. Adjacent green space areas or other areas depicted or described herein do not reflect currently existing, proposed or potential improvements for such sites or any surrounding areas and Developer makes no representations as to the present or future accuracy of, nor shall buyers rely upon, any such renderings or other materials. All square footages and dimensions, including (without limitation) ceiling heights, are estimates based on preliminary plans and will vary with actual construction. All floor plans, specifications and other development plans are proposed and conceptual only, and are subject to change and will not necessarily accurately reflect the final plans and specifications.